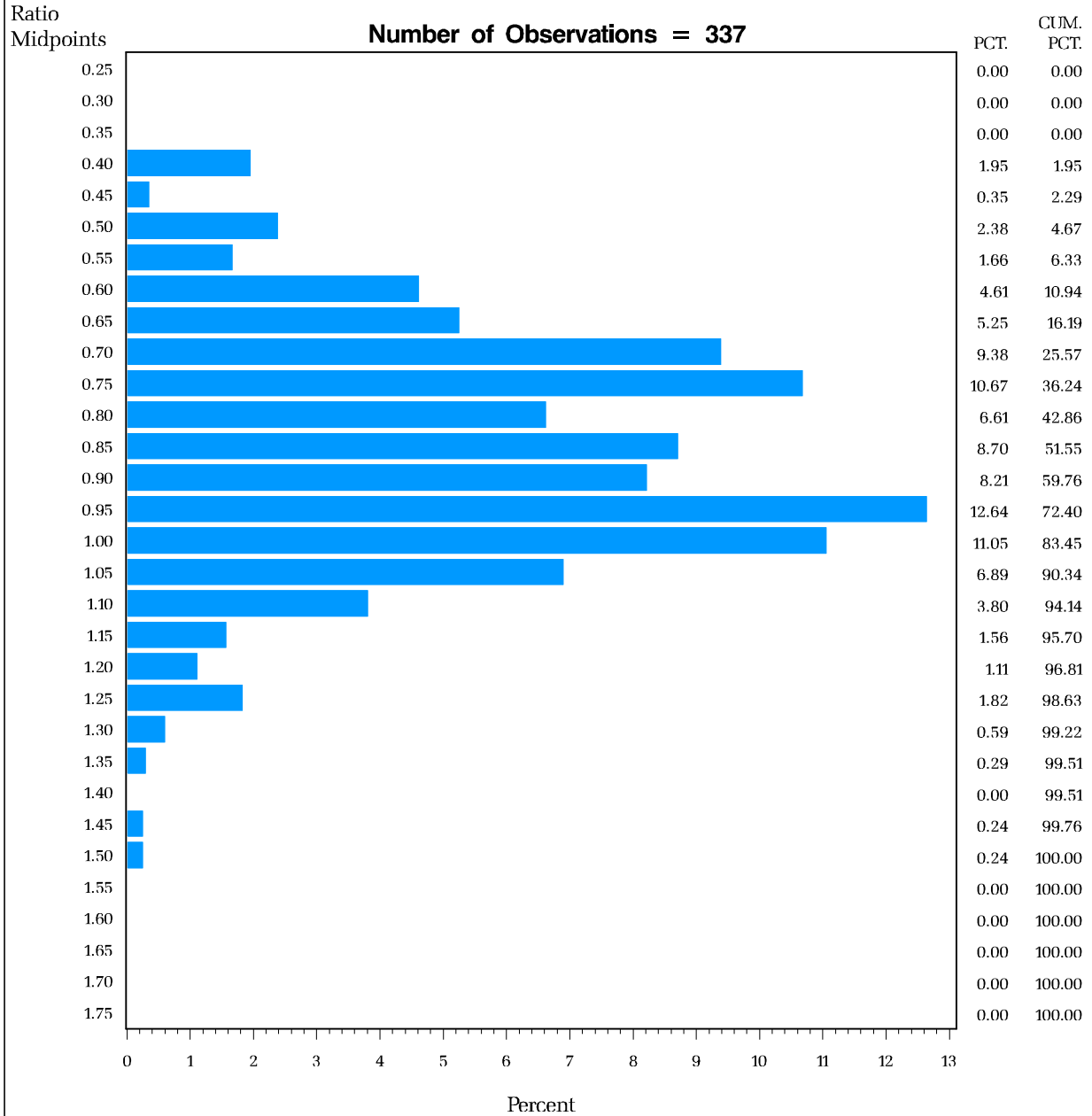


2007 Assessment Year
Frequency Distribution of Ratio of Assessed Value to Sales Value
Distribution for San Juan County



The horizontal axis shows the percent of properties that fall within the interval. The vertical axis is divided into intervals. The vertical axis is labeled with the midpoint of each interval – each interval is .05 wide. For example, the interval labeled .90 contains the range 0.875 to 0.925.