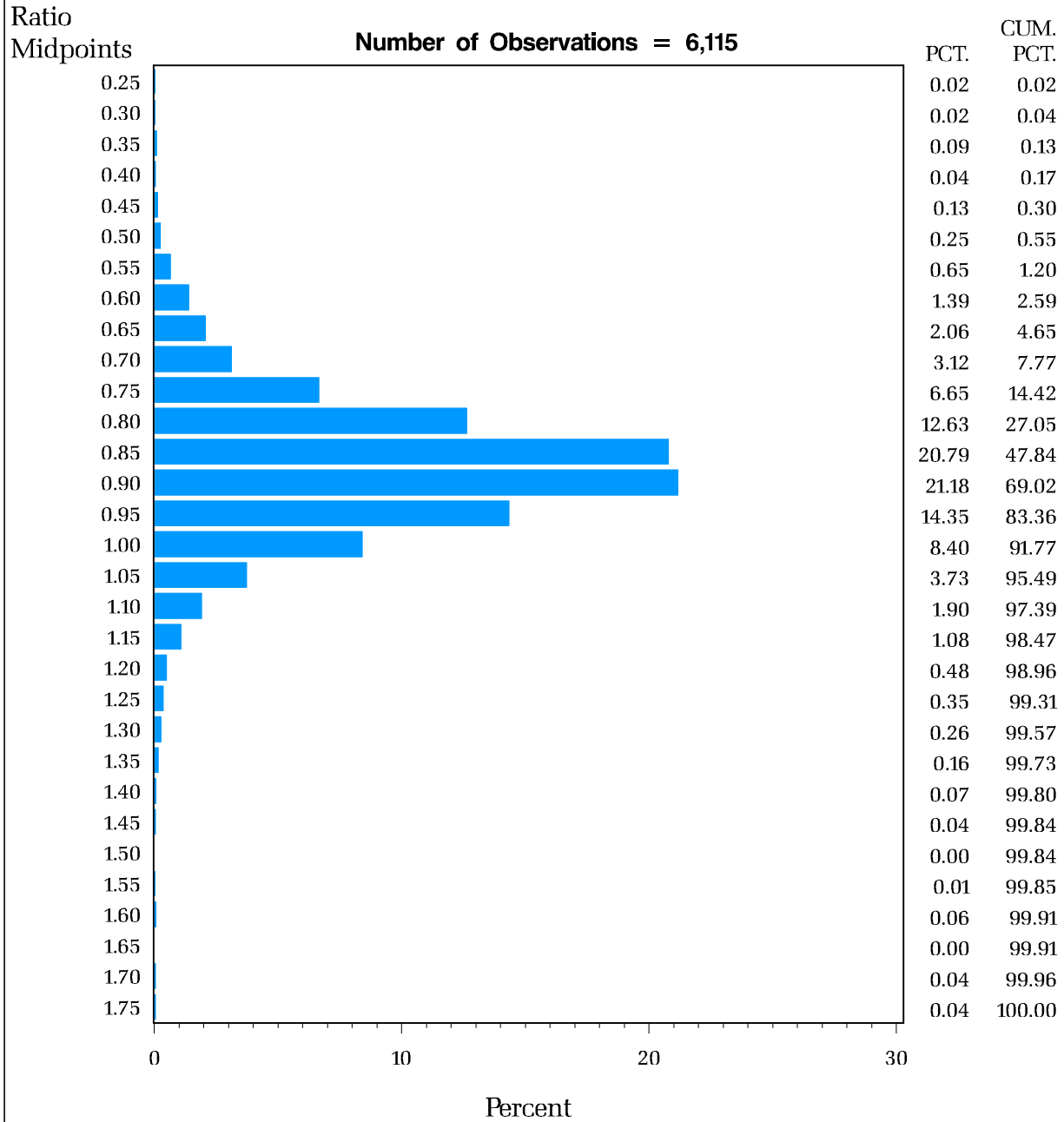


2008 Assessment Year

Frequency Distribution of Ratio of Assessed Value to Sales Value Distribution for Pierce County



The horizontal axis shows the percent of properties that fall within the interval. The vertical axis is divided into intervals. The vertical axis is labeled with the midpoint of each interval – each interval is .05 wide. For example, the interval labeled .90 contains the range 0.875 to 0.925.