
State Agencies

Overview and Table of Contents

This section includes background, program, and funding information about state agencies whose missions relate to the oversight, maintenance, or improvement of the state's transportation system. The agencies described in this section receive appropriations from the transportation budget bill. The Department of Licensing, the State Patrol, the Public Employees Relations Commission, and the Utilities and Transportation Commission receive funding from both the transportation budget bill for transportation-related programs and the omnibus budget bill for all other programs.

Some general government agencies, not described in this section, receive appropriations in the transportation budget to fund transportation-related activities. In the 2011-13 biennium, these agencies included: State Parks and Recreation, Archaeology and Historic Preservation, Office of Financial Management, the Department of Enterprise Services, the Legislative Evaluation and Accountability Program Committee, and the Department of Agriculture.

State Agencies.....	365
Board of Pilotage Commissioners.....	366
County Road Administration Board.....	367
Department of Licensing.....	369
Department of Transportation.....	373
Freight Mobility Strategic Investment Board.....	380
Joint Transportation Committee.....	381
Public Employment Relations Commission, Marine Division.....	382
Transportation Improvement Board.....	383
Traffic Safety Commission.....	386
Transportation Commission.....	387
Utilities and Transportation Commission.....	388
Washington State Patrol.....	389

AGENCY: **Board of Pilotage Commissioners**

AGENCY NUMBER: 205

RCW: 88.16 RCW

BACKGROUND

- Created by the 1935 Legislature to regulate state-licensed marine pilots
- This regulatory Board includes a representative of the Washington State Ferries (who serves as Chair), a representative from the Department of Ecology, and seven members who are appointed by the Governor and confirmed by the Senate, serving staggered four-year terms: Shipping industry (2), pilots (2), public (2), and environmental (1).
- The Board ensures against the loss of lives, loss of or damage to property and vessels, and protects the marine environment by maintaining efficient and competent pilotage service on our state's inland waters.
- It is intended that the Board develop and encourage waterborne commerce from other ports and nations of the world and not jeopardize Washington's position as an able competitor for such commerce.
- Website: www.pilotage.wa.gov

PROGRAM

- Develops and proposes statutory language for legislative adoption to ensure safe compulsory pilotage
- Adopts rules to administer state pilotage laws
- Enforces pilot and public adherence to the Pilotage Act, which may include the discipline and/or prosecution of violators
- Sets annual pilotage service rates for the Puget Sound and Grays Harbor Pilotage Districts
- Administers pilot qualification and performance standards, as well as training and educational requirements through the testing, training and licensing of marine pilots
- Establishes standards and procedures for reporting and investigating incidents involving state-piloted vessels

TRANSPORTATION FUNDING - 2011-13 BIENNIUM

- Beginning with the 2009-11 biennium, the Pilotage Account became a nonappropriated account.
- Total 2011-13 allotment: \$1,185 million.

AGENCY: County Road Administration Board
AGENCY NUMBER: 406
RCW: 36.78, 36.79, 46.68, 46.68.120-124, 47.56.725(4)

BACKGROUND

- The County Road Administration Board (CRAB) was created in 1965 to regulate the road departments in the 39 counties of Washington State by establishing and administering Standards of Good Practice (see Title 136 WAC for more details). In 1983, the role of CRAB was expanded to include administration of the Rural Arterial Program. In 1985, CRAB became responsible for maintenance of the statewide county roadlog (inventory of all county road systems) and allocation of the county motor vehicle fuel tax. In 1990, administration of the County Arterial Preservation Program was assigned to CRAB and, in 1991, CRAB was granted authority to assist ferry-operating counties with ferry capital improvements as approved by the Legislature.
- The agency is governed by a nine-member board which meets quarterly and is comprised of six county commissioners or council members and three county engineers. Board members are selected by the Washington State Association of Counties as follows: Three from counties with a population of 125,000 or more, four from counties with a population from 20,000 to 125,000, and two from counties with a population of less than 20,000. Not more than one member may be from any one county.
- The mission of the County Road Administration Board is to preserve and enhance the transportation infrastructure of Washington Counties by providing standards of good practice, fair administration of funding programs, visionary leadership, and integrated, progressive, and professional technical services.
- Website: <http://www.crab.wa.gov/>

PROGRAMS

Statutory Oversight:

- Establishes, by rule, standards of good practice and reporting mechanisms for the administration of county roads.
- Annually updates and certifies the statewide county roadlog and biennially calculates county fuel tax allocation factors.
- Establishes and maintains a uniform system of bridge and roadway maintenance categories, reconstruction categories, and associated costs.
- Annually reviews each county's compliance with statutes and rules and issues Certificates of Good Practice to those counties in substantial compliance. (Issuance of a Certificate of Good Practice is a prerequisite for a county to receive its share of the motor vehicle fuel tax.)

Grant Management:

Administers assigned state grant programs to assist counties in the improvement and preservation of their arterial road systems.

Rural Arterial Program (RAP):

- Adopts rules to administer the program. Available funds are apportioned by statutory formula to five regions; within each region, funds are distributed on a competitive basis based on priority.

- Program funds are used to construct and improve county arterials and collectors in rural areas, and to match federal bridge replacement funds on all rural county bridges.
- Program funds may be used for projects that are the direct result of natural or manmade disasters.

County Arterial Preservation Program (CAPP):

- Adopts rules to administer the program.
- Available funds are distributed to counties based on pro-rata shares of county paved arterial lane miles.
- Program funds are used for improvements to county paved arterials that will sustain structural, safety, and operational integrity and preserve the capital investment.
- Ensures that counties implement and use a Pavement Management System as a condition of receiving funds.

County Ferry Capital Improvement Program (CFCIP):

- Funds can be appropriated to any of the four counties operating vehicle ferries (Whatcom, Skagit, Pierce and Wahkiakum counties) for vessel replacement or major upgrades to vessels or docks.

Management and Professional Services:

- Provides assistance and support to the counties in the areas of professional engineering, program development, and road department management.
- Provides assistance and support to county road departments and their county legislative authorities on issues relating to county roads in order to enhance the safe and efficient movement of people and goods over those roads.
- Provides orientation and training to county engineers, public works directors, and other Public Works staff.
- Provides technical assistance to counties in transportation planning, traffic engineering, and priority programming.

Information Services:

- Develops and provides IT software and systems, training, support, and consulting services specific to the needs of Washington county road departments that enable informed decisions and effective management.
- Provides state-of-the-art engineering road design software, support, and training that enables counties to effectively collect, develop and manipulate the geometric data necessary for site design and construction planning which has contained costs and improved productivity.
- Develops, provides, and supports *Mobility*, a comprehensive road inventory and management software which enhances a county's ability to make quality decisions in management and operations, protect the public's investment in transportation infrastructure, comply with CRAB regulations, and be accountable to legislative authority.

TRANSPORTATION FUNDING – 2011-13 BIENNIUM

- Total appropriation: Operating \$4,431,000; Capital \$96,244,000.
- Revenue appropriated from the following Motor Vehicle Fund accounts:
 - Motor Vehicle Account (State)
 - Rural Arterial Trust Account
 - County Arterial Preservation Account
 - Highway Safety Account

AGENCY: **Department of Licensing**
AGENCY NUMBER: 240
RCW: Title 46, 82, 18; RCW 43.24, 88.02

BACKGROUND

- Created in 1921 as the Department of Licenses
- Changed to Department of Motor Vehicles in 1965 after it assumed vehicle licensing responsibilities from the State Patrol
- Name changed to Department of Licensing (DOL) in 1977 after it assumed business licensing responsibilities
- More than 86% of the Department's functions are related to transportation and funded through the Transportation Budget. The remaining funding, for activities such as the licensing of businesses and professions, is appropriated by the Omnibus Operating Budget.
- Collects more than \$3.6 billion in transportation and general fund revenue biennially
- Website: www.dol.wa.gov

PROGRAM

Customer Relations Division

It is the responsibility of the Customer Relations Division to issue and renew driver licenses and identification cards, and to title and register vehicles and vessels. DOL's Customer Relations Division oversees the following program areas:

- **Driver Examining** - operates and maintains 56 Licensing Services Offices. Services include determining the identity and eligibility of all driver license and identification card applicants; conducting written knowledge testing and practical drive tests; issuing and renewing Washington State driver licenses and identification cards; issuing and renewing federally recognized Enhanced Driver Licenses and Identification Cards for use in crossing the border by land or sea from the United States into Canada, Mexico, Bermuda and the Caribbean; administering the Motor Voter and Organ Donor programs; and conducting re-examinations and special skill driving tests.
- **Customer Service Center** - answers phone calls and email inquiries regarding driver, vehicle, and business licensing from customers around the world.
- **Vehicle and Vessel Operations** - Vehicle and vessel licensing services are provided at 39 county offices and more than 140 contracted sub-agent offices throughout Washington State. Services include: retention and maintenance of vehicle and vessel records; training and technical assistance to county agents and their subagents to collect revenues and process applications for license and title of vehicles and vessels; and managing sub-agent office agreements.

Programs and Services Division

The Programs and Services Division consists of the following major program areas:

- **Contracts and Programs**
 - Motorcycle Safety Education and Motorcycle Awareness programs - media campaigns, compliance with approved motorcycle rider training curriculum, contracting third party services, certifying instructors, conducting administrative compliance audits, and quality assurance visits to contractors and their instructors;

- Commercial Driver License (CDL) program - state compliance with federal motor carrier regulations for the application, testing and licensing of CDL applicants, evaluating drivers for medical qualification waivers, skill testing new applicants using state staff and contractors, and setting minimum CDL training requirements;
 - Contract, grant, legislative and rule management for DOL;
 - Provision of data to law enforcement, the public health and safety community, and auto safety and insurance companies
 - Project management in support of enhanced licensing, document authentication and imaging, inter-jurisdiction and inter-governmental agreements, and the monitoring and documentation of compliance with all applicable state and federal regulations.
 - Indigent Drivers Program - fee waiver program for eligible indigent drivers involved in a DUI hearing or applying for an ignition interlock driver's license.
- **Administrative Hearings** - for driver license suspensions, revocations, or other restrictions.
 - **Driver Records** - Administers state laws relating to DUI, implied consent, habitual traffic offenders, unpaid traffic violations, minor-in-possession, and financial responsibility.
 - Identifies potentially unsafe drivers by record screening and referral;
 - Supports law enforcement and the judicial system in the prosecution of criminal traffic cases.
 - Processes all suspension, revocation, cancellation and disqualification sanctions resulting from DUI arrests, convictions, non-payment of traffic fines or child support, uninsured accidents, and habitual traffic offenders;
 - Oversees ignition interlock program and issuance of all temporary restricted licenses.
 - Manages record retention of all documents and electronic records for all licensed and non-licensed drivers and identification card holders.
 - **License Integrity Unit** - Provides driver information for criminal investigations and ID theft cases, verifies documents, performs facial recognition analysis, acts as custodian of records for the courts, takes administrative action against fraudulent drivers, investigates EDL fraud allegations, and partners with local and federal law enforcement to prosecute those individuals.
 - **Systems and Licensing Support** - Issues Certificates of Title for vehicles and vessels. Responsible for fee and tax collections and accountability including, for example, vessel excise taxes, Regional Transit Authority (RTA) taxes, Transportation Benefit District (TBD) local fees, special commemorative funds, and in cooperation with the Department of Revenue collects use tax on transfers of vehicle or vessel ownership. Responsible for maintenance of vehicle and vessel records, including information reported to DOL by insurance companies, tow truck companies, scrappers, wreckers, and vehicle sellers. Designs and issuance of license plates, placards, identification cards, and specialty license plates and veteran remembrance emblems. Performs stolen vehicles check of Vehicle Identification Numbers (VIN) on all out of state vehicles being titled in the state.

Business and Professions Division

The Business and Professions Division is comprised of three major program areas:

- Professional Licensing Services regulates 34 professions to ensure qualified individuals are licensed in a variety of service specialties. Of the professions regulated, only the Driver Training School Instructors receives transportation funds.
- Dealer and Manufacturer Services administers and enforces laws related to the licensing and regulation of a variety of vehicle manufacturers, dealers, haulers and processors doing business in Washington State. Included enforcing laws relating to odometer tampering, auto theft deterrent, manufactured/mobile housing regulations, unlicensed vehicle dealer activities, and motor vehicle dealer/manufacturer franchise dispute resolution. Program activities include conducting inspections, investigations, certifications, re-certifications, and technical assistance visits to ensure compliance; and responding to consumer complaints related to dealers and manufacturers doing business in Washington State.

- Prorate and Fuel Tax Services administers the state’s Motor Vehicle Fuel, Special Fuel, and Aviation Fuel Tax Collection programs. Services include licensing of fuel distributors, processing fuel tax returns and associated payments, and taxpayer education, training and auditing. This program also administers the International Registration Plan and International Fuel Tax Agreement. These two agreements provide for one-stop vehicle licensing and fuel tax filing services for Washington based interstate motor carriers.
- Four BPD programs are statutorily required to collect fees to cover operating costs: Firearms (General Fund), Drivers Training Schools (Highway Safety), and Dealers and Manufacturer Services and Prorate and Fuel Tax (Motor Vehicle). The fees are set in the Washington Administrative Code and are adopted using a public hearing process.

Other non-transportation related programs administered by the division include: the Uniform Commercial Code program, which is the central repository of liens on personal property in Washington State; maintenance of the Firearms Database, which contains firearms records used by law enforcement; and oversight of professional athletic events, including boxing, mixed martial arts, and wrestling.

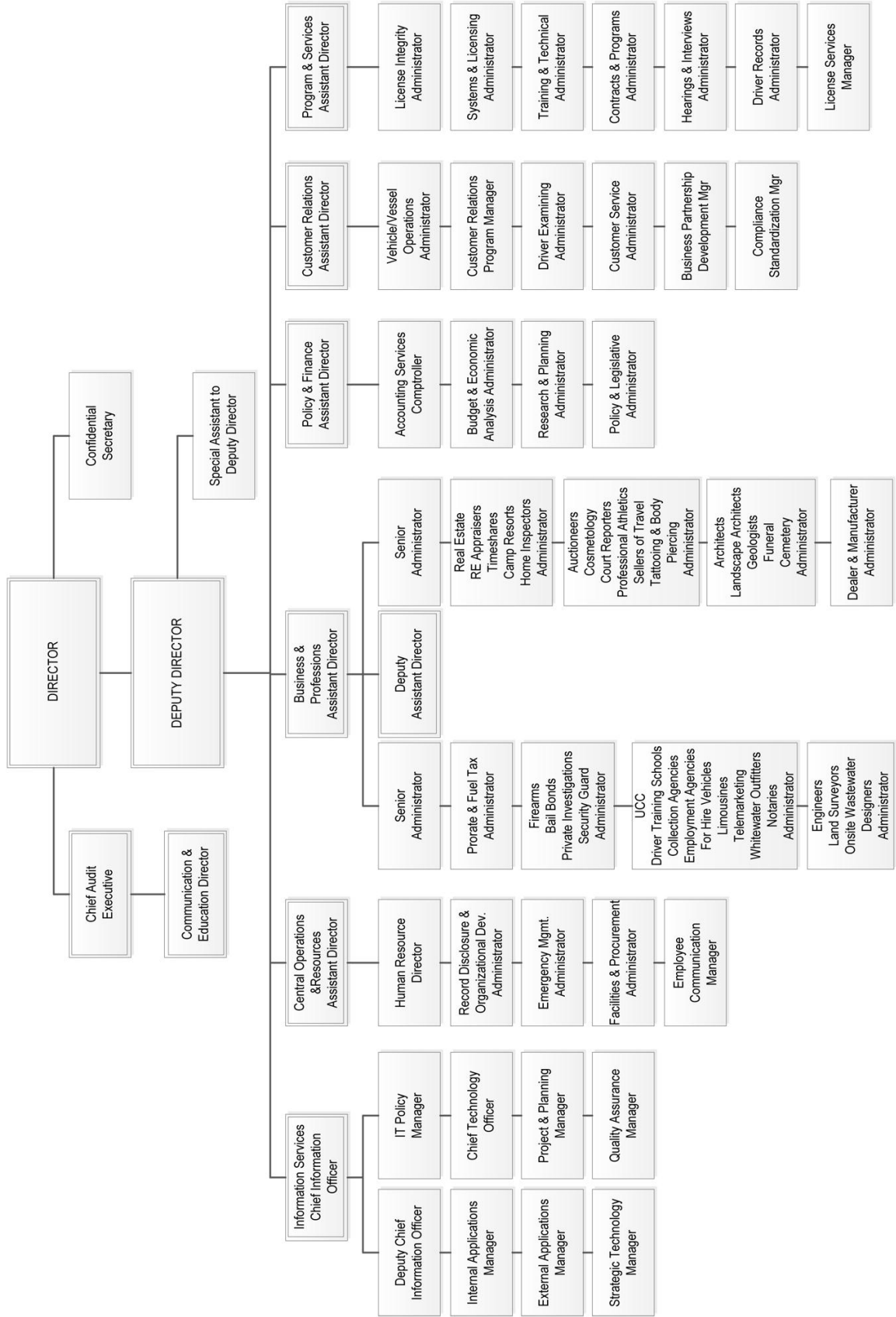
DOL Management/Supporting Divisions

- The Director’s Office, containing the Communications and Education office and the Tribal Liaison;
- The Office of System and Program Review which conducts independent and objective auditing, consulting, and process reengineering services;
- Central Operations and Resources, comprising Human Resources, Facilities and Procurement, Contracts Office, Public Disclosure, Delinquent Parking Ticket program for local jurisdictions, Administrative Services, various plate and emblem programs to generate revenue for state, local, and private programs, and Emergency Management and Safety;
- Policy and Finance Division, comprising the Policy and Legislative Unit, the Office of Budget and Economic Analysis, Accounting Services, and the Research and Planning Office;
- Information Services Division, which manages the computer hardware, software, network technology, and business application software that support the agency’s business functions and statutory programs.

TRANSPORTATION FUNDING - 2011-13 BIENNIUM

- Total appropriation for transportation programs: \$244.4 million.
- Revenue to support the transportation programs of DOL was appropriated from the following accounts:
 - Highway Safety Fund (State, Federal and Local)
 - Motor Vehicle Fund (State, Federal and Local)
 - DOL Services Account (State)
 - Motorcycle Safety Education Account (State)
 - State Wildlife Fund (State)
 - Ignition Interlock Device Revolving Account (State)
 - Marine Fuel Tax Refund Account (State)
- Total appropriation for non-transportation programs (Omnibus Operating Budget): \$38 million.

DEPARTMENT OF LICENSING



AGENCY: **Department of Transportation**

AGENCY NUMBER: 405

RCW: Title 47 RCW

BACKGROUND

- WSDOT is responsible for administering the statewide transportation system and ensuring that people and goods move safely and efficiently across the state.
- The agency was created by the 1977 Legislature to consolidate the functions of the following agencies:
 - State Highway Commission
 - Department of Highways
 - Washington Toll Bridge Authority
 - Aeronautics Commission
 - Canal Commission
 - Planning and Community Affairs Agency (transportation functions)
- The Secretary of Transportation is the Washington State Department of Transportation's executive head, appointed by the Governor and confirmed by the Senate.
- WSDOT is organized to deliver a comprehensive transportation program.
- Website: www.wsdot.wa.gov

AGENCY OVERVIEW

- Office of the Secretary
 - Directs WSDOT.
- Chief of Staff - Directs the offices of:
 - Communications, which strives to provide relevant, accurate, clear and consistent information that conveys WSDOT's key messages and that serves the public need for knowledge and insight into WSDOT activities;
 - Governmental Relations, which manages federal, state, and tribal relationships in the legislative and intergovernmental arenas on behalf of the WSDOT.
- Administration - Directs finance, revenue forecasting, administrative, human resources, department's information technology, and enterprise risk management functions.
- Rail and Marine
 - Administers the delivery of high speed passenger rail construction projects, freight rail construction projects, and rail-highway safety projects;
 - Coordinates state participation in the operations of Amtrak Cascades intercity passenger rail services;
 - Operates, maintains, and preserves state owned railroads;
 - Operates the Washington State Grain Train program and Produce Rail Car program; and
 - Conducts planning and studies on rail and marine issues, investment projects; and services.
- Freight Systems - undertakes freight system planning and research.
- Aviation
 - Administers aircraft registration and fee collection for in-state non-commercial aircraft;
 - Management of 16 state operated airports;
 - Planning of the state's airport system;
 - Distribution of airport aid/grants to local jurisdictions;

- Technical assistance to local jurisdictions on airport land use planning;
 - Management of the state’s Air Search and Rescue.
- Public Transportation - supports a full spectrum of programs and projects that connect big and small communities and provide access to most people in the state.
- Highways and Local Programs
 - Serves as the steward in administering federal funds and provides oversight roles on behalf of both the state and FHWA for local agency projects;
 - Manages federal funds for the local bridge program and the Highway Safety Improvement Program;
 - Provides substantial technical assistance to local governments;
 - Administers state aid grants to local governments, such as the Safe Routes to Schools and the Bicycle/Pedestrian programs; and
 - Provides financial assistance to Wahkiakum County for a portion of the operating and maintenance costs of the Ferry Wahkiakum.
- Audit Office
 - Conducts internal audits;
 - Audits agreements with external providers such as consultants, railroads and utilities;
 - Investigates potential fraud, abuse, and government waste; and
 - Investigates potential ethics violations.
- Equal Opportunity Office
 - Manages and monitors the Equal Opportunity, Affirmative Action, Contract Compliance, and Non-Discrimination programs.
- Strategic Planning and Finance
 - Provides budget development, advocacy, allotment, monitoring, economic data, and financial analysis services for WSDOT and its partners;
 - Prioritizes and programs highway construction projects;
 - Develops and implements the agency’s biennial and multi-year capital improvement and preservation program (CIPP);
 - Tracks, measures, monitors, and reports on capital program and project delivery;
 - Manages the agency federal aid highway programs and oversees federal funding for local planning organizations;
 - Develops the statewide multimodal transportation and highway plans;
 - Gathers and analyzes transportation related data;
 - Reports performance through the Gray Notebook;
 - Supports state efforts to address growth management, climate change, and other issues that affect transportation; and
 - Engages the private sector in unique public/private partnerships that can help advance important transportation projects, programs, or policies.
- Engineering and Regional Operations
 - Provides direction and support to regional offices that implement projects and programs within the following specified areas of the state:
 - North Central Region - Serves all of Chelan, Douglas, Grant, and Okanogan counties, and portions of Adams, Skagit, Kittitas, and King counties;
 - Northwest Region - Serves King, Snohomish, Skagit, Whatcom, Island, and San Juan counties;
 - Southwest Region - Serves Clark, Cowlitz, Klickitat, Lewis, Pacific, Skamania, and Wahkiakum counties;

- South Central Region - Serves Kittitas, Yakima, Benton, Franklin, Walla Walla, Columbia, Garfield, and Asotin counties;
- Eastern Region - Serves Adams, Ferry, Lincoln, Pend Oreille, Spokane, Stevens, and Whitman counties; and
- Olympic Region - Serves Pierce, Kitsap, Thurston, Mason, Grays Harbor, Jefferson, and Clallam counties.
- Toll Division - Coordinates the development of tolling policy proposals and operates several toll roadways and bridges.
- Performs comprehensive project management functions:
 - Pre-construction project support such as design policy and training; imagery and mapping services; administration of consultant contracts; and purchase and sale of real estate for construction projects;
 - Preparation of scope, schedule, and budget for projects within a six year timeframe;
 - Project design including surveying, right-of-way and access, soil and structural engineering components, and traffic safety concerns;
 - geotechnical engineering and materials testing;
 - environmental permitting and agency compliance with the Clean Water Act, Endangered Species Act, Clean Air Act, and other environmental regulations; and
 - oversight of construction and consultant contracts.
- Other activities performed by Engineering and Regional Operations:
 - Conducts maintenance activities such as snow and ice removal, sign and guardrail maintenance, ditch and culvert upkeep, pavement patching, vegetation control and litter pickup, as well as managing a fleet of roadway maintenance vehicles and support equipment;
 - Conducts and disseminates transportation research;
 - Maintains, operates, and is responsible for improvement and preservation of 946 department-owned buildings and structures at 296 separate sites across the state;
 - Workforce training on safety and health practices and disaster response;
 - Facilitates the movement of traffic and goods by utilizing various traffic technologies, such as active traffic management systems; electronic tolling; traffic cameras, variable message signs, and ramp meters; and
 - Maintains and operates 946 department-owned buildings at 296 separate locations. Manages the department's vehicles and equipment.
- Washington State Ferries
 - Provides ferry transportation service on Puget Sound (largest ferry system in the United States);
 - Develops and recommends policy and direction on state ferry issues to departmental leadership;
 - Oversees vessel construction;
 - Performs vessel, ferry terminal, and facility maintenance and preservation; and
 - Works with the United States Coast Guard to ensure that maintenance and crewing requirements for existing fleet vessels are met.

TRANSPORTATION FUNDING – 2011-13 BIENNIUM

- Total Appropriation: \$7.8 billion.
- Funding for the various programs by major accounts are shown in the following table:

2011-13 Revised Transportation Budget (2012 Supplemental)

Enacted

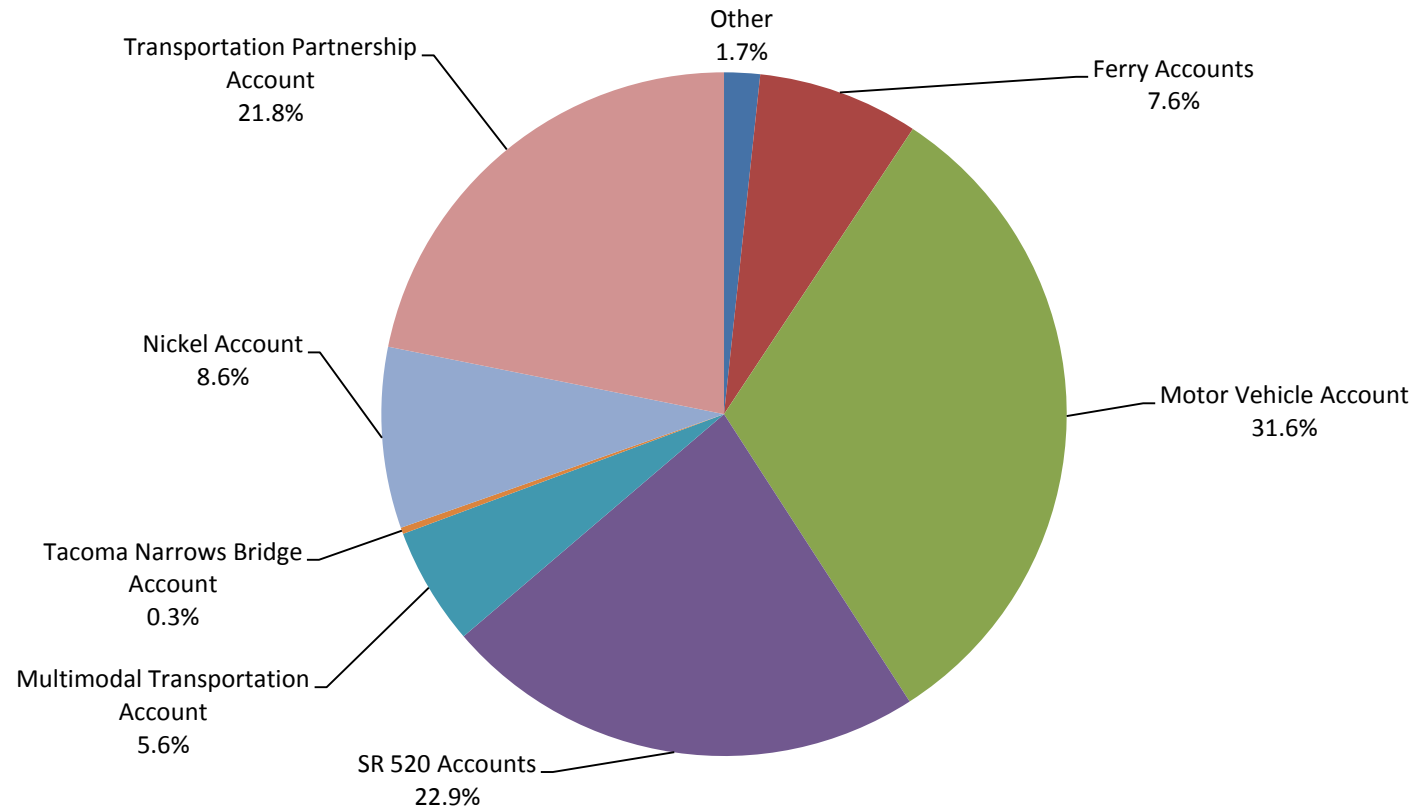
TOTAL OPERATING AND CAPITAL BUDGET

(Dollars in Thousands)

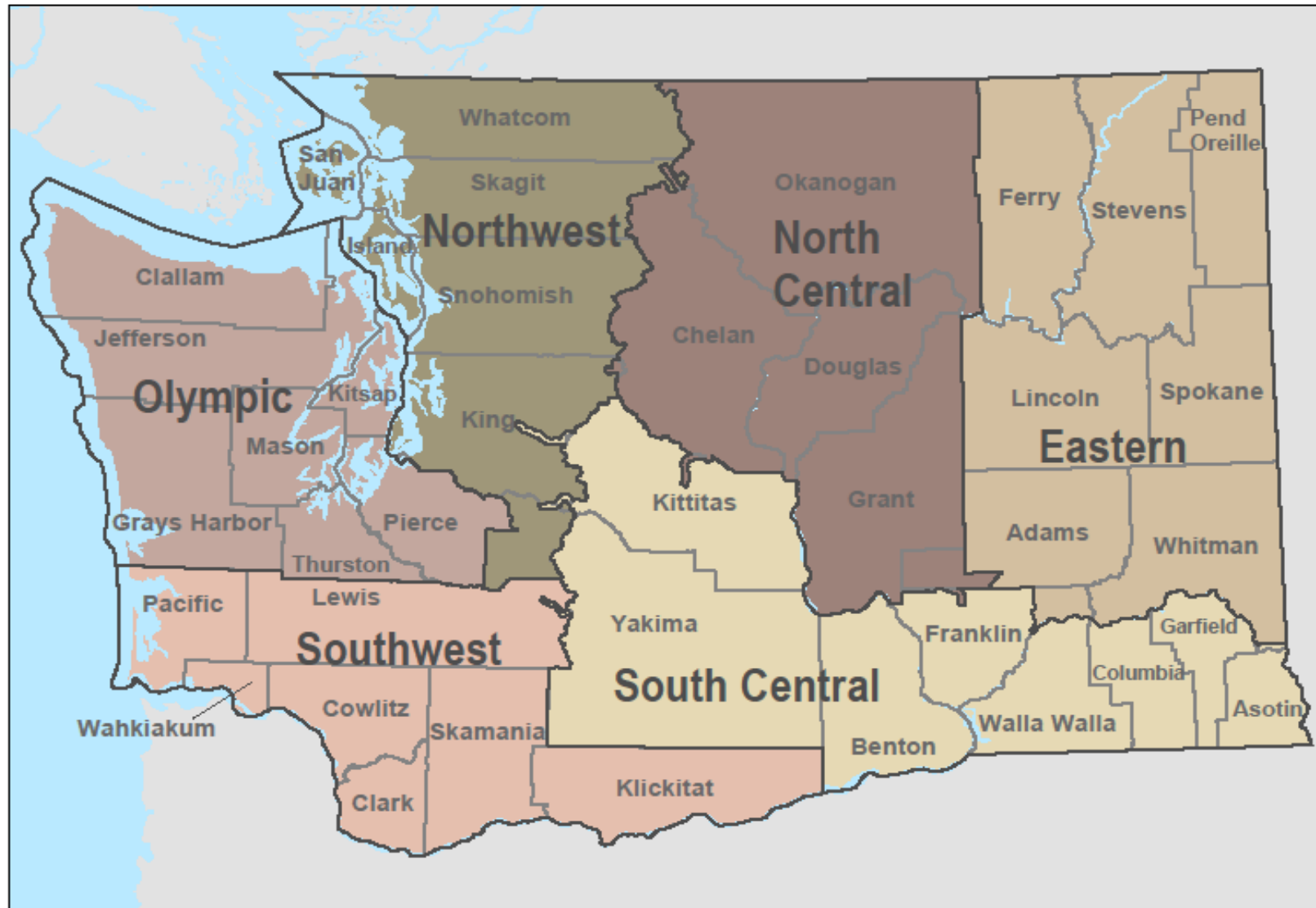
	Motor Vehicle Account -- State	Motor Vehicle Account -- Federal, Local	Puget Sound Ferry Operations -- State	Transportation 2003 (Nickel) -- State	Transportation Partnership Account (TPA) -- State	Multimodal Transportation Account -- State	Other Appropriations*	Total Appropriations
Department of Transportation								
Pgm B - Toll Op & Maint-Op	538	0	0	0	0	0	55,558	56,096
Pgm C - Information Technology	67,398	0	0	1,460	1,460	363	0	70,681
Pgm D - Facilities-Operating	25,466	0	0	0	0	0	0	25,466
Pgm D - Facilities-Capital	5,545	0	0	0	1,575	0	0	7,120
Pgm F - Aviation	0	0	0	0	0	0	8,152	8,152
Pgm H - Pgm Delivery Mgmt & Suppt	45,796	500	0	0	0	250	0	46,546
Pgm I - Improvements	112,192	915,620	0	416,125	1,636,316	0	1,752,262	4,832,515
Pgm K - Public/Private Part-Op	827	0	0	0	0	110	0	937
Pgm M - Highway Maintenance	373,709	7,000	0	0	0	0	3,500	384,209
Pgm P - Preservation	81,741	561,891	0	23	44,463	0	3,759	691,877
Pgm Q - Traffic Operations	48,818	2,300	0	0	0	0	0	51,118
Pgm Q - Traffic Operations - Cap	8,779	7,283	0	0	0	0	0	16,062
Pgm S - Transportation Management	27,389	30	0	0	0	973	0	28,392
Pgm T - Transpo Plan, Data & Resch	22,304	21,885	0	0	0	662	3,659	48,510
Pgm U - Charges from Other Agys	74,734	400	0	0	0	1,798	0	76,932
Pgm V - Public Transportation	0	160	0	0	0	42,939	70,003	113,102
Pgm W - WA State Ferries-Cap	0	0	0	249,928	12,838	27,527	123,901	414,194
Pgm X - WA State Ferries-Op	0	0	468,135	0	0	0	7,000	475,135
Pgm Y - Rail - Op	0	0	0	0	0	33,642	400	34,042
Pgm Y - Rail - Cap	0	0	0	0	0	58,220	244,865	303,085
Pgm Z - Local Programs-Operating	8,518	2,567	0	0	0	0	0	11,085
Pgm Z - Local Programs-Capital	4,179	37,935	0	0	7,181	22,575	35,704	107,574
TOTAL	907,933	1,557,571	468,135	667,536	1,703,833	189,059	2,308,763	7,802,830

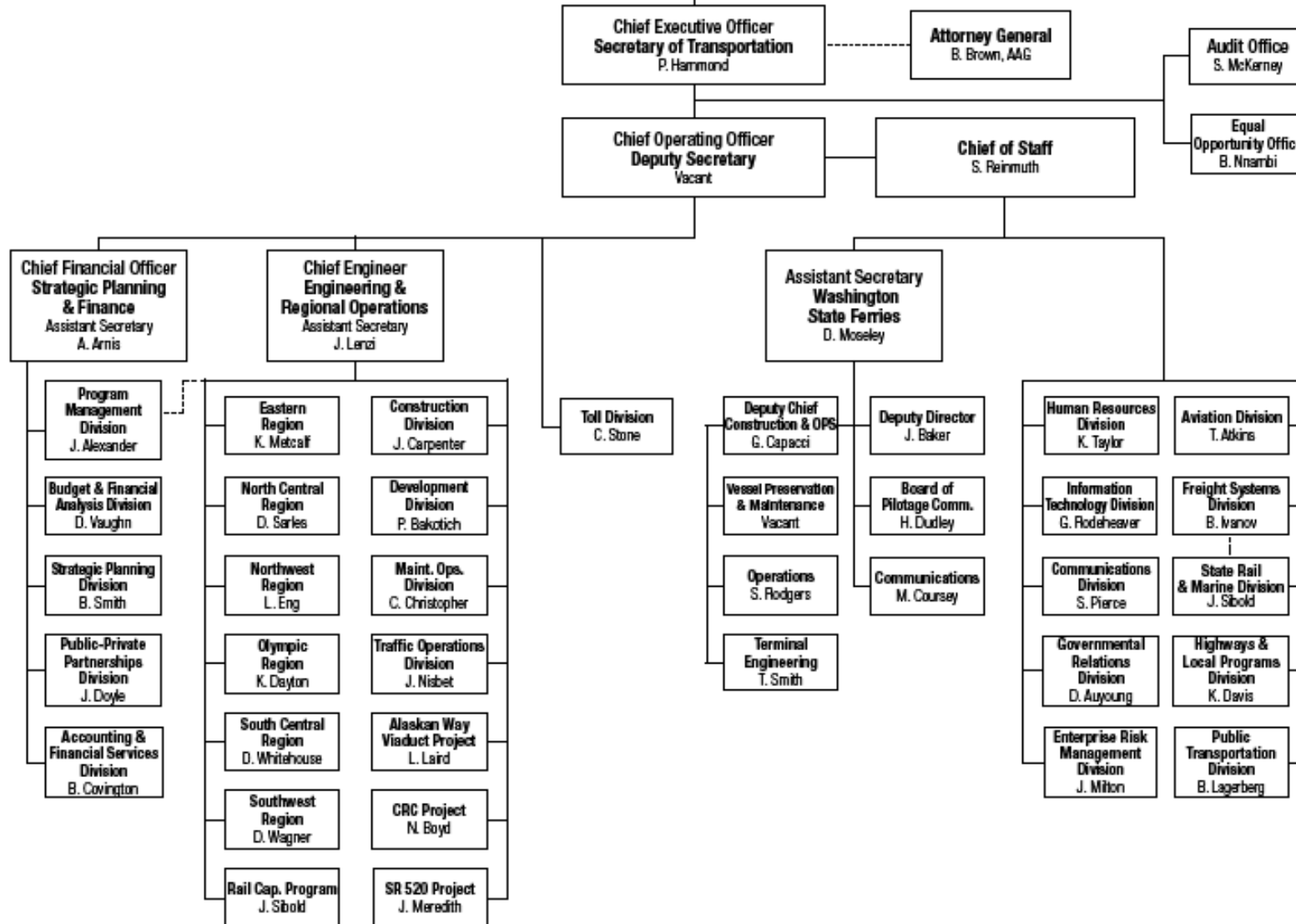
* Other appropriations include \$1.8 billion in appropriations from the State Route Number 520 Corridor Account (Programs B and I).

Washington State Department of Transportation 2011-13 Appropriated Budget - 2012 Supplemental \$7.8 Billion



Washington State Department of Transportation - Regions





AGENCY: **Freight Mobility Strategic Investment Board**

AGENCY NUMBER: 411

RCW: Chapter 47.06A RCW

- Created in 1998 to advocate for freight mobility needs.
- Responsible for selecting, prioritizing and creating funding partnerships for freight transportation projects, and minimizing the impact of freight movement on local communities.
- The Board is comprised of 12 members representing the private and public sectors. Membership includes two representatives each from the cities, counties, and port districts representing both Eastern and Western Washington and one member each representing rail carriers, the steamship industry, the trucking industry, the Governor's office, the Secretary of Transportation and the general public.
- Staff consists of an executive director hired by the board, a deputy director and an executive secretary. All other technical support is contracted from the public and private sector.
- FMSIB administrative costs are paid for from the Motor Vehicle Account. Funding for the FMSIB share of recommended projects are included in the Highways & Local Programs section of the WSDOT budget.
- Website: www.fmsib.wa.gov

PROGRAM

- Analyzes freight impacts and recommends freight mobility projects to the Legislature for funding.
- Tracks projects & reports progress through completion of the construction phase.
- Uses agency developed freight criteria for selecting and prioritizing projects.
- Works with the state & local communities to identify chokepoints and develop freight corridors.
- Assists in helping to identify & develop public and private sector partnerships.

TRANSPORTATION FUNDING - 2011-13 BIENNIUM

- Total transportation appropriation: Operating - \$781,000; Capital \$38,849,000
- Revenue is appropriated from the following accounts:
 - Motor Vehicle Account (state, federal, local);
 - Multimodal Transportation Account (state);
 - Freight Mobility Multimodal Account (state, local); and
 - Freight Mobility Investment Account (state).

AGENCY: **Joint Transportation Committee**

AGENCY NUMBER: 013

RCW: RCW 44.04.300

BACKGROUND

- In the 2005 session, the Legislature created the Joint Transportation Committee (JTC) in ESB 5513, Ch. 319, Laws of 2005.
- The JTC operates as a bipartisan, bicameral legislative agency. Through review and research of transportation issues and programs, JTC promotes the dissemination of transportation research to state and local government policymakers, including legislators and associated staff.
- JTC is one of five permanent joint committees defined by statute.
- Statutory membership: The chairs and ranking members of the House and Senate Transportation Committees comprise the JTC Executive Committee. The chairs of the House and Senate Transportation Committees serve as co-chairs of the JTC.
- Website: www.leg.wa.gov/JTC/

PROGRAM

- Administers technical transportation reviews and studies.
- Performs interim reviews and studies as directed.
- Manages contracts for which the Joint Transportation Committee is responsible.
- Updates and publishes the Transportation Resource Manual on a biennial basis prior to the 105 day legislative session, and maintains periodic updates on-line.
- In the 2011-13 biennium, the JTC conducted the following studies and reviews
 - Public Transportation Fiscal Health (2012)
 - Joint Procurement of 144 Car Vessels with BC Ferries (2012)
 - Federal Funds Expenditure (2012)
 - Columbia River Crossing Oversight Subcommittee (2012)
 - Aviation Search and Rescue (2012)
 - Liquefied Natural Gas as Ferry Fuel (2011)
 - Public Private Partnerships in Transportation (2011)
 - Stormwater Management Costs and Efficiencies (2011)
 - Evaluate the Management Organization of Washington State Ferries (2011)
 - Washington State Ferries Fare-Media Study (2011)

TRANSPORTATION FUNDING - 2011-13 BIENNIUM

- Total Appropriation: \$2.0 million
- Revenue appropriated from the Motor Vehicle Account (State)

AGENCY: **Public Employment Relations Commission,
Marine Division**

AGENCY NUMBER: 408

RCW: 47.64 RCW

BACKGROUND

- In 1981, following a ferry employee strike, the Governor created a Blue Ribbon Panel which proposed a collective bargaining process to resolve labor disputes between ferry system management and employee organizations. The Marine Employees' Commission (MEC) was created in 1983, in response to a recommendation of the Blue Ribbon Panel.
- Prior to 2011, the three MEC members were appointed by the Governor: public (1), labor (1), industry (1), with the public member designated as the Chair of the Commission. The MEC was responsible for adjudicating complaints, grievances and disputes between labor and management arising out of the operation of the Washington State Ferries.
- In 2011, Second Engrossed Substitute Senate Bill 5742 merged the MEC into the Public Employment Relations Commission (PERC). During a transition period, the MEC will hear any appeals from PERC Examiner decisions, including complaints, grievances, and disputes between labor and management arising out of the operation of the ferry system. Effective July 1, 2013, the MEC will be disbanded and its functions transferred to PERC.
- Website: www.perc.wa.gov/marine/

PROGRAM

- Adjusts grievances and complaints
- Provides for clarification of bargaining units representing ferry employees
- Certifies fair representation organizations
- Provides impasse mediation

TRANSPORTATION FUNDING 2011-13 BIENNIUM

- Total appropriation: \$75,000
- Revenue appropriated from Puget Sound Ferry Operations Account (PSFOA)

AGENCY: **Transportation Improvement Board**

AGENCY NUMBER: 407

RCW: Chapter 47.26 RCW

BACKGROUND

- The mission of the Transportation Improvement Board (TIB) is to fund high priority transportation projects in communities throughout the state to enhance the movement of people, goods, and services.
- Invests state gas tax funds through six programs. Administers the Urban Arterial Program, Urban Corridor Program, Small City Arterial Program, Sidewalk Program (urban and small city), Small City Preservation Program, and the Road Transfer Program (City Hardship Assistance Program).
- The TIB was restructured in 1988 and was previously known as the Urban Arterial Board.
- The Board is comprised of 21 members: six city members, six county members, two WSDOT officials, two transit representatives, a private sector representative, one ports representative, a Governor appointee, a member representing non-motorized transportation, and one member representing special needs transportation.
- Website: www.tib.wa.gov

URBAN AREA PROGRAMS

- Urban Arterial Program
 - Provides grant funds for city and urban county road projects that improve mobility and improve safety.
 - Eligible agencies are counties with urban areas, cities and towns within an urban area, and cities with a population of 5,000 or greater.
 - Grants provide up to 90% of project costs.
 - Funds are distributed across five regions based on population and arterial lane miles.
- Urban Corridor Program
 - Addresses congestion caused by economic development or rapid growth and requires multi-agency planning and coordination as well as partnerships with the business community.
 - Completes urban corridor projects that allow motorists to receive the full benefit of prior investments.
 - Funding is available for cities with a population greater than 5,000, urban areas of counties, and Transportation Benefit Districts.
 - Grants provide up to 90% of project costs.
 - Funds are distributed across three regions based on population and arterial lane miles.
- Sidewalk Program (Urban Cities)
 - Funds projects to maintain a connecting sidewalk system, eliminating fragments and providing continuity, and ADA accessibility.
 - Funding available for cities with a population greater than 5,000.
 - Grants provide up to 80% of project costs.
 - Funds are distributed across five regions based on population and arterial lane miles.

- Arterial Preservation Program
 - Created in 2012 with additional funding provided to TIB from the Highway Safety Account to address the need to preserve the existing transportation system.
 - Provides funding to city streets on a non-competitive basis. To be eligible, cities must have less than \$2 billion in total assessed property value.
 - Projects are chosen based on pavement ratings, economies of scale, and use.

SMALL CITIES PROGRAMS

- Small City Arterial Program
 - Funds projects that preserve and improve the arterial roadway system in cities with population less than 5,000.
 - Projects must address structural condition of the roadway, geometric deficiencies, and safety.
- Grants provide up to 95% of costs for cities with population between 500 and 5,000, and up to 100% for cities with population of 500 or less.
- Sidewalk Program (Small Cities)
 - Funds projects to maintain a connecting sidewalk system. Focuses on connecting pedestrian generators, providing a network of continuous sidewalks, maintaining sidewalk condition, and ADA accessibility.
 - Funding available for cities with a population less than 5,000.
 - The amount of required match is 5%, except no match is required for cities with a population under 500.

ROAD MAINTENANCE PROGRAMS

- Small City Preservation Program
 - Created by the 2005 Legislature to recognize the difficulty small cities and towns face maintaining and preserving the street and sidewalk system.
 - Provides overlay and chip seal to city streets on a non-competitive basis (fix the worst first).
 - Projects chosen based on pavement ratings, sidewalk condition, and proximity to other roadway projects. TIB works with WSDOT and County Road Departments through master agreements to maximize economies of scale.
 - Eligible agencies are incorporated cities and towns with a population less than 5,000.
 - Grants range from 90% to 100% of project costs, depending on the city's assessed property valuation.
- City Hardship Assistance Program (CHAP)
 - Provides funding to offset extraordinary costs associated with the transfer of state highways to cities with a population fewer than 20,000.
 - The list of eligible routes is in WAC 479-10-220.
 - CHAP will fund 100% of the rehabilitation costs for the eligible section or route.

OTHER ACTIVITIES

- Administrative Services
 - Provide support to the Board.
 - Provide engineering services and consultation to local agencies.
 - Performance Management is institutionalized in the agency through the TIB GMAP Dashboard.

- Technical Assistance
 - TIB funding workshops
 - TIB academy training
 - Small city street inventory
 - Value engineering study participation

TRANSPORTATION FUNDING - 2011-13 BIENNIUM

- Total appropriation: Operating - \$3,625,000; Capital - \$246,315,000
- Revenue appropriated from the following accounts:
 - Transportation Improvement Account (State)
 - Small City Pavement and Sidewalk Account (State)
 - Highway Safety Account (State)

AGENCY: **Traffic Safety Commission**

AGENCY NUMBER: 228

RCW: 43.59

BACKGROUND

- Established in 1967 as mandated by the Federal Highway Safety Act of 1966
- Ten members: the Governor (chair), the Superintendent of Public Instruction, the Chief of the State Patrol, the Secretary of Transportation, the Director of the Department of Licensing, the Secretary of the Department of Social and Health Services, the Secretary of the Department of Health, and one each (appointed by Governor) from judiciary, counties, and cities
- Website: www.wtsc.wa.gov

PROGRAM

- Implement programs to reduce traffic crashes and the injuries and deaths resulting from traffic crashes
- Coordinate traffic safety programs at the state and local level
- Administer federal highway safety funds for Washington State
- Promote uniform enforcement of traffic safety laws
- Adopt the priorities, goals, and strategies identified in the Washington State Strategic Highway Safety Plan, known as Target Zero. For more information, see targetzero.com.
- Other program areas include:
 - Traffic records
 - Motorcycle safety
 - Emergency medical services
 - Pedestrian safety
 - Bicycle safety
 - Community Traffic Safety Task Forces and Corridor Traffic Safety programs
 - Traffic engineering
 - School zone & pupil transportation safety

TRANSPORTATION FUNDING - 2011-13 BIENNIUM

- Total appropriation: \$48,880,000
- \$22 million of the total 2011-13 appropriation is federal funding that passes through the Traffic Safety Commission to the Washington State Department of Transportation for highway safety projects.
- Revenue appropriated from the following accounts:
 - Highway Safety Account (State, Federal, Private/Local)
 - School Zone Safety Account (State)

AGENCY: **Transportation Commission**

AGENCY NUMBER: 410

RCW: RCWs 47.01.051 - 075; 47.01.420 - 425; 47.46.100 - 110; 47.56.030; 47.56.805 et seq.; 47.60.286, 47.60.315, 47.60.327

BACKGROUND

- Created in 1977 by merging the Toll Bridge Authority (1937) and the Highway Commission (1951), along with the new Department of Transportation.
- Restructured in 2005 and 2006 as an independent, Governor-appointed public forum to research and develop transportation policy statewide. Prior to that time, the Commission was responsible for hiring the Secretary of Transportation, detailed administrative oversight of WSDOT and its program delivery, and approval of the WSDOT biennial budget and legislative policy packages.
- Seven members appointed to six-year terms by the Governor and confirmed by the Senate. The Governor (or designee) and the Secretary of Transportation sit as nonvoting members.
- Includes four members from Western Washington and three members from Eastern Washington. No more than two members may be from any one county. Members serve part-time.

PROGRAM

- The Commission provides a public forum for transportation policy development and functions. It reviews and evaluates how the entire transportation system works across the state.
- Adopts a comprehensive and balanced 20-year statewide transportation plan that reflects the priorities of government and addresses local, regional and statewide needs.
- Recommends policy changes and areas for improvement in its policy studies and in its Annual Report.
- Sets fares and tolls for ferries, bridges and highways.
- Oversees development of the Transportation Innovative Partnerships Program (sometimes referred to as the public-private partnership program).
- Other ongoing policy tasks include:
 - Review possible additions, deletions or changes to the state highway system and forward findings and recommendations to the Legislature.
 - Review ferry operational strategies to ensure full utilization of existing assets and, jointly with the department, recommend improvements to the legislature
 - Naming state transportation facilities.

TRANSPORTATION FUNDING - 2011-13 BIENNIUM

- Total appropriation: \$3.1 million
- Revenue appropriated from the Motor Vehicle Account (State) and the Multimodal Transportation Account (State)

<u>AGENCY:</u>	Utilities and Transportation Commission
<u>AGENCY NUMBER:</u>	215
<u>RCW:</u>	Chapter 80.01 RCW; Various chapters in Title 81 specific to certain transportation service providers

BACKGROUND

- Created in 1905, the UTC protects consumers by ensuring that essential utility and transportation services are broadly available, safe, reliable and fairly priced.
- Regulate entry and rates of privately-owned utility and transportation companies.
- Enforce public safety standards and resolve consumer complaints.
- Three full-time members appointed by the Governor with the consent of the Senate, for staggered six-year terms. No more than two commissioners can be from the same party. The Governor designates one member as Chair of the Commission.
- Responsible for intrastate operations subject to state law.
- Website: www.wutc.wa.gov

PROGRAMS

- Economic Regulation (rates, terms and conditions for service)
- Public Safety: Pipeline, Railroad, and Motor Carrier
- Consumer Protection
- Administration

TRANSPORTATION ACTIVITIES

- Rail Safety Grants - Work with local governments, the Department of Transportation, school districts, and community organizations to improve rail safety by granting funds for grade crossing improvements from the Grade Crossing Protective Fund.
- Railroad Crossing Safety - Inspect railroad crossings for safety. UTC approves opening and closing of crossings and changes to configuration of crossings.
- Economic and Safety Regulation - Regulate entry, rates, safety and business practices. Regulated companies include: solid waste, household goods movers, buses and aeroporters, non-profit buses, private ferries, and low level waste disposal sites. Responsible for vehicle driver and operational safety practices of private intrastate transportation companies regulated by the UTC.
- Licensing - Register to operate interstate and intrastate trucking companies. Monitor insurance for intrastate motor carriers including suspending and canceling operating authority if insurance lapses.
- Federal Railroad Inspections - Certified by the Federal Railroad Administration to inspect railroad tracks, signals, hazardous material and railroad operating practices, enforcing state and federal rules. Investigate rail incidents and promote public education about rail safety.

TRANSPORTATION FUNDING - 2011-13 BIENNIUM

- Total appropriation: \$504,000
- Revenue appropriated from the Grade Crossing Protective Account

AGENCY: **Washington State Patrol**

AGENCY NUMBER: 225

RCW: 43.43, 43.63A, 9.94A RCW

BACKGROUND:

- In 1921, the Legislature authorized the creation of Highway Police composed of 6 motorcycle patrolmen.
- In 1933, the Legislature acknowledged the need for a mobile police organization throughout the state for public safety, and the Highway Patrol Division became the Washington State Patrol (WSP) with full police power.
- The State Fire Marshal became a member of the agency when the Legislature transferred Fire Protection Services to the WSP in 1995.
- The Forensic Laboratory Service Bureau was created when the Legislature transferred the Washington State Toxicologist to the WSP in 1999.
- The Chief of the State Patrol is appointed by the Governor and confirmed by the Senate.
- This agency is multi-funded. It receives 75% of its budget from the Transportation Budget and 25% from the Omnibus Operating Budget for costs related to general law enforcement activities. For example, the Fire Protection Bureau is fully funded by the General Fund, while activities such as the Crime Laboratory, Criminal Investigations, Investigative Assistance and Executive Protection receive substantial funding from the General Fund.
- Website: www.wsp.wa.gov

PROGRAMS:

The Washington State Patrol (WSP) is responsible for traffic law enforcement, collision investigation, criminal interdiction, terrorism prevention and motorist assists on 17,524 miles of interstate and state highway systems. WSP troopers/officers use a data-driven approach to crime and traffic safety, spending a majority of their proactive patrol time looking for violations where data shows motorists are most likely to be killed or seriously injured.

WSP has aligned its efforts toward Washington State's Strategic Highway Safety Plan known as "Target Zero" which calls for reducing traffic deaths to zero by the year 2030. Three Target Zero Teams (TZZT) comprised of 21 troopers have been deployed in King, Pierce, and Snohomish Counties to focus on *Speeding, Driving While Impaired, and Failure to Wear a Seat Belt*, violations which have been proven to cause fatal or serious injury collisions or have serious safety implications. For more on Target Zero see www.targetzero.com.

Office of the Chief:

The Office of the Chief oversees statewide operations of the agency. Direct reports include government and media relations, the labor and policy office, budget and fiscal services, psychological assistance to employees and their families, and the chaplaincy program.

Field Operations Bureau

- Field force troopers are responsible for traffic law enforcement, criminal interdiction/terrorism prevention, collision investigation, assistance to motorists, and statewide emergency response to civil disturbances and man-made natural disasters.
- The Commercial Vehicle Enforcement Division is responsible for promoting the safe travel of commercial vehicles on state highways through education and enforcement of both state and federal laws regulating commercial vehicles. The division also conducts school bus inspections.

Fire Protection Bureau:

The State Fire Marshal's Office provides services to fire agencies, government agencies, members of the media, and the public. Services include: construction plan review, fire and life safety inspections of licensed care facilities such as nursing homes and child care centers, licensing of the fireworks and sprinkler industry, fire service training, public education, coordination of fire service resources during disasters, and adopting and enforcing fire and life safety codes in all occupied buildings throughout the state. Through the Fire Training Academy, provides extensive fire training programs to local communities, state agencies, and industry.

Forensic Laboratory Services Bureau:

The bureau coordinates the efforts of:

- Crime Laboratories that provide quality forensic services and training across the state to over 300 law enforcement agencies within Washington State.
- The Implied Consent Section includes the State's Breath Alcohol Test Program that maintains all evidentiary breath-testing instruments in the state and provides all training and expert witness testimony in support of the program; Drug Evaluation and Classification Program (DEC) which trains officer to recognize the symptoms of intoxication for 7 different categories of drugs; and the Ignition Interlock Program which certifies ignition interlock manufacturers and monitors the ignition interlock installers throughout the state.
- The State Toxicology Laboratory performs drug and alcohol testing for coroners, medical examiners, law enforcement agencies, prosecuting attorneys, and the Liquor Control Board (LCB).

Investigative Services Bureau:

- The Criminal Investigation Division's main function is to provide follow-up investigative assistance on cases that go beyond the crime scene. The division consists of three major sections comprised of detectives assigned to Felony Collision, Auto Theft, and Special Investigations Section. The Vehicle Identification Number (VIN) inspection program is also a vital part of CID.
- The Investigative Assistance Division provides investigative services, technical support, and training to the Washington State Patrol, law enforcement agencies, other agencies, and community groups. The Division includes a Narcotics Section, Special Weapons and Tactics Team, and a special investigations unit.

- The Special Operations Division is comprised of the Executive Services Section and the Aviation Section. The ESS provides security and protection for the Governor, the Governor's family, the Lieutenant Governor and the Governor's Mansion. Aviation provides assistance with daytime and nighttime aerial traffic enforcement and traffic congestion management programs. The DUI Aerial Response Team (DART) program also serves to locate and coordinate responses to citizen DUI reports and blocking incidents that impact traffic congestion in the Puget Sound metropolitan area. Aviation also provides transportation services for the Governor and other state agency personnel as well as transportation of high risk fugitives, as necessary for the Department of Corrections.
- The Criminal History Record section is the central repository for criminal history information for the State of Washington. The data maintained includes fingerprint-based records and disposition information submitted by law enforcement agencies and courts throughout the state. In addition, more than 250 federal, state, and local jurisdictions submit collision information which is used to analyze crash factors and develop programs to enhance highway safety.
- The Homeland Security Division is responsible for law enforcement and security within the state ferry system including the ferry terminals and vessels as well as bomb squad response state-wide and utilization of explosive K-9 units.
- The Office of Professional Standards (OPS) provides oversight responsibility for the agency's complaint and disciplinary procedures.

Technical Services Bureau:

- The bureau provides support services for the WSP, including audit, public disclosure, strategic planning and performance, engineering, information technology, human resources, and property and fleet management.
- Other activities provided by the bureau include administration of policies regarding property and evidence handling, ensuring compliance to state mandates and CALEA standards; operation of a 24-hour-a-day, 365-day-a-year statewide emergency system from the eight WSP communications centers around the state; and staffing the State Interoperability Executive Committee (SIEC).

TRANSPORTATION FUNDING 2011-13 BIENNIUM:

- Total appropriation: Operating - \$365,778,000; Capital - \$6,681,000.
- Funding is appropriated in the Transportation Budget for the Washington State Patrol from the following accounts:
 - State Patrol Highway Account (State, Federal and Local)
 - Multimodal Transportation Account (State)
 - Ignition Interlock Device Revolving Account (State)
- Highway Safety Account (State)

**WASHINGTON STATE PATROL
ORGANIZATIONAL CHART
AUGUST 2012**

