

# 2015 Drought Response



Washington  
State Department of  
Agriculture

## **The Washington Department of Agriculture (WSDA) coordinates federal, state and local drought relief for the agricultural community.**

Specifically, the agency:

- Provides technical input to both the Water Supply Availability Committee (WSAC) and the Executive Water Emergency Committee (EWEC) regarding drought declaration
- Assembled a Drought Response Team, including internal experts, irrigators, key agribusiness representatives, USDA, and other federal and state agencies.
- Hosts regularly scheduled conference calls for the Drought Response Team to share situational updates, strategize relief opportunities, and coordinate next steps.
- Participates in numerous public information programs through the media to address agricultural issues related to drought
- Is developing a web page for the agricultural community that provides information regarding state and federal drought assistance, drought status reports, and a way to ask and receive answers to agricultural questions related to the drought



Washington  
State Department of  
Agriculture

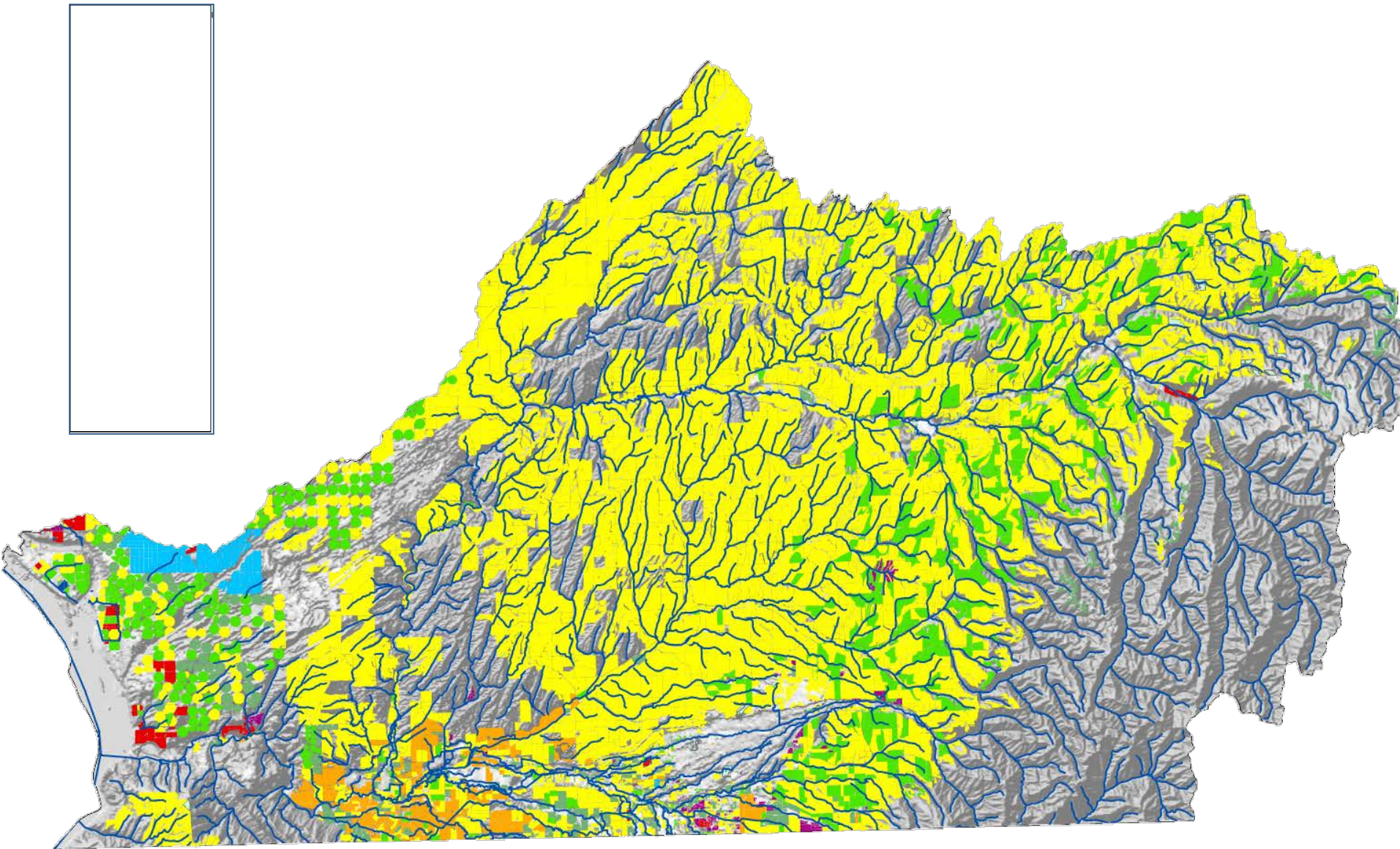
# Drought Technical Assistance

- Hardship consideration factors to the EWEC
- Monitor federal drought declaration progress
- Coordinating state and federal drought assistance to growers and cattlemen
- Assist Ecology in determining feasibility of various temporary water (re) allocation activities
- Other areas of concern as they may develop





## WRIA 32 – Walla Walla



# U.S. Drought Monitor Washington

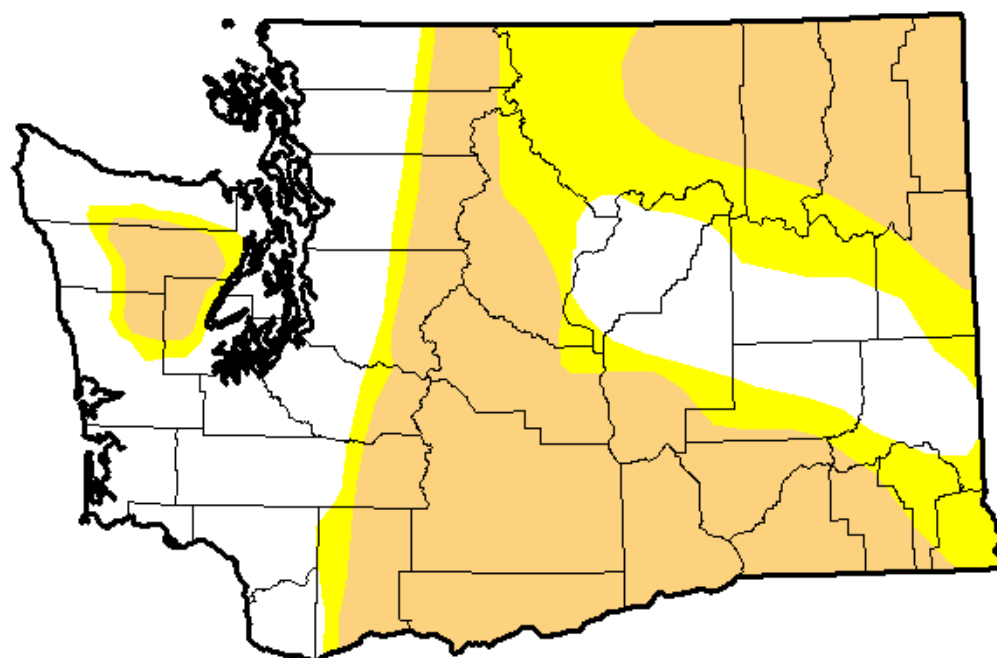
**April 21, 2015**

(Released Thursday, Apr. 23, 2015)

Valid 7 a.m. EST

*Drought Conditions (Percent Area)*

	None	D0-D4	D1-D4	D2-D4	D3-D4	D4
<b>Current</b>	34.63	65.37	45.86	0.00	0.00	0.00
<b>Last Week</b> 4/14/2015	34.63	65.37	28.13	0.00	0.00	0.00
<b>3 Months Ago</b> 1/20/2015	47.26	52.74	25.38	10.54	0.00	0.00
<b>Start of Calendar Year</b> 1/20/2014	51.87	48.13	36.15	14.83	0.00	0.00
<b>Start of Water Year</b> 9/30/2014	34.22	65.78	40.27	20.17	0.00	0.00
<b>One Year Ago</b> 4/22/2014	42.83	57.17	35.45	17.22	0.00	0.00



## Intensity:



The Drought Monitor focuses on broad-scale conditions. Local conditions may vary. See accompanying text summary for forecast statements.

## Author:

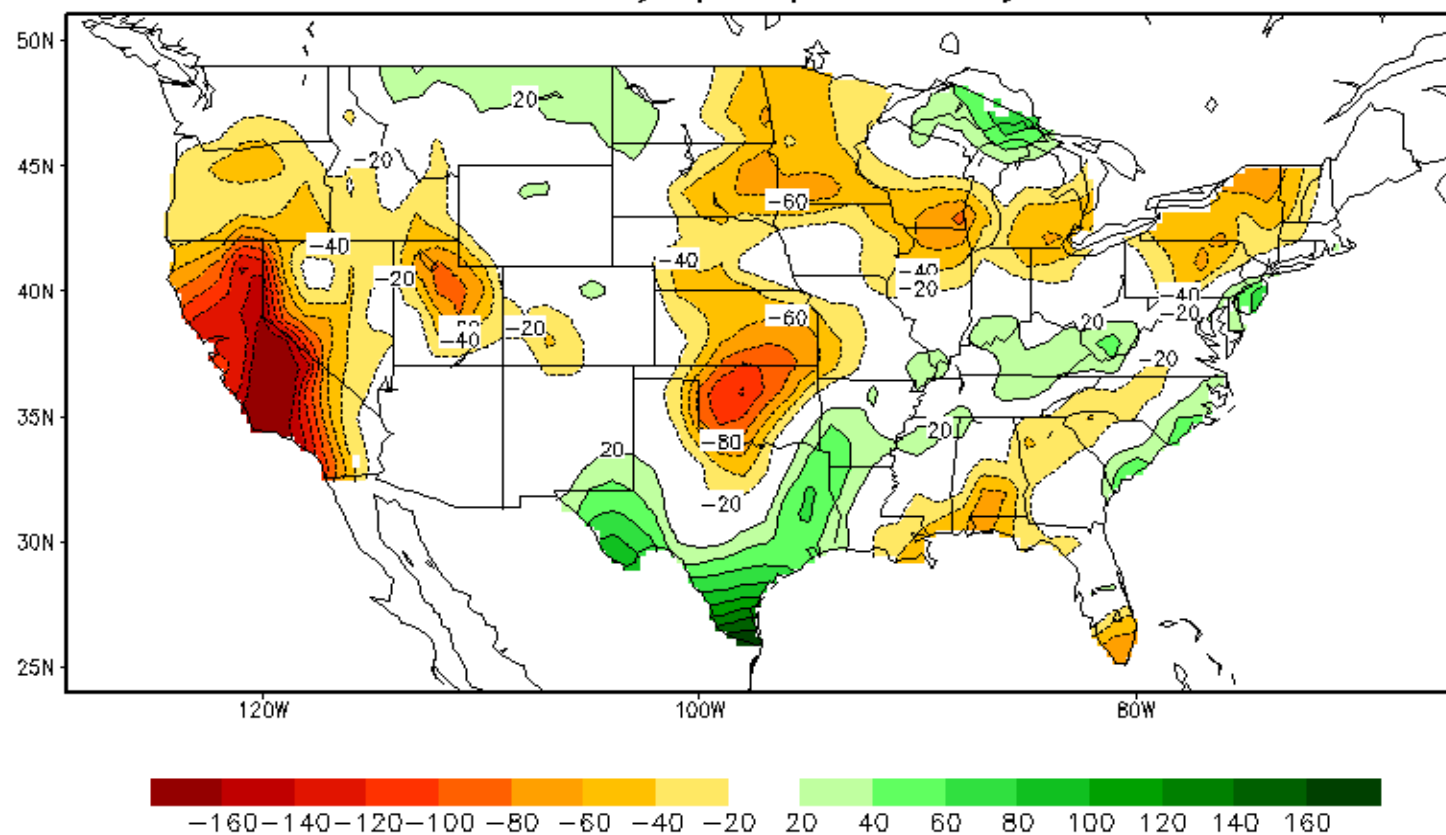
Anthony Artusa

NOAA/NWS/NCEP/CPC



<http://droughtmonitor.unl.edu/>

## Soil Moisture Anomaly (mm) Last day of MAR, 2015



QUESTIONS?



Washington  
State Department of  
Agriculture