

State of Washington



ROBERT C. BAILEY-D
SEASIDE
PACIFIC
Majority Caucus Chairman
REPRESENTATIVE 20111



GEORGE W. CLARKE-R
KING, part
Minority Floor Leader



H.A. BARNEY GOLTZ-D
WATKIN, part



GEORGE L. SELVAR-R
CREAS - DOUGLAS
HEART, part - GRADNAR, part



JOHN S. MURRAY-R
KING, part



AL HENRY-D
CLARK, part - SULLIVANT
SALAMANCA
President Pro-Tem



JAMES EDWARD KEEFER-D
SPOKANE, part
Vice President Pro-Tem



R. LORRAINE WOTJAHN-D
WISSE, part



DEL BAUSCH-D
THURSTONE, part



JOHN E. JACK CUNNINGHAM-R
KING, part



SUSAN E. GOULD-R
SNOHOMISH, part



GORDON HERR-D
KING, part



SID W. MORRISON-R
YAKIMA, part



GEORGE W. SCOTT-R
KING, part



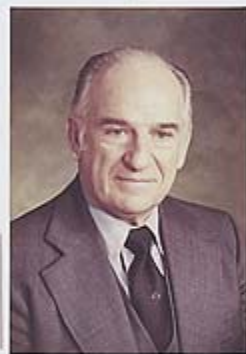
FRANK J. WOODY-D
SNOHOMISH, part



C.W. RED BECK-D
KING, part
FURCE, part



WILLIAM S. DAY-D
SPOKANE, part
WOMEN, part



Lieutenant Governor John Chaberg-D
President of the Senate



GARY GRANT-D
KING, part



R.H. BOB LEWIS-R
SPOKANE, part
Christine Marylglen



CHARLES E. HENSON-WALKER-R
BENIC, part
Minority Caucus Chairman



DON L. TALLEY-D
CLARK, part
GRAY, part



BRUCE A. WILSON-D
FRANK - LINCOLN AND OREGON
WELLS - CLACKAM, part
BONACME, part



MAX E. BENITZ-R
SNOHOMISH, part
SEATTLE, part



HUBERT F. DONOHUE-D
ADAMS - ALSTIN - GRAYFIELD
COLLINGS, part
GRANT, part - LYNN, part



SAM C. GUESS-R
SPOKANE, part



JOHN D. JONES-R
KING, part
Minority Whip



LOIS NORTH-R
KING, part



RAY VAN HOLLEN-D
KING, part
SNOHOMISH, part



NAT W. WASHINGTON-D
BOTTLE - SMITH, part
YAKIMA, part



ALAN BLUECHEL-R
KING, part



GEORGE FLEMING-D
KING, part
Minority Caucus Vice Chairman



JEANNETTE HAYER-R
FRANKLIN - SULLA - SULLA
COLLIER, part



AUGUST P. HARDESEN-D
SNOHOMISH, part



GARY M. ODEGAARD-D
LEWIS - WASHINGTON
COMINGS, part - PACE, part
THURSTONE, part
Minority Caucus Secretary



PETER VON REICHBAUER-D
KING, part



R. TED BOTTIGER-D
FRANK, part
THURSTONE, part



MARCUS S. GASPARD-D
SNOHOMISH, part
FRANK, part



DAN MARSH-D
CLARK, part
Assistant Majority Leader



LOWELL PETERSH-D
SNOHOMISH, part
WATKIN, part



GORDON L. WALOREN-D
BUTTE, part
Minority Leader



KENT PULLEN-R
KING, part



NANCY BUFFINGTON-R
KING, part



A.L. SLIM RASMUSSEN-D
FRANK, part



JIM MATSON-R
SNOHOMISH, part
Minority Leader



PETE FRANCIS-D
KING, part



JAMES A. McDERMOTT-R
KING, part



RUTHE RIDDER-D
KING, part



GORDON SANDISON-D
CLALLAM - DEFRONCO
FRANK - THURSTONE, part
SLEETER
Minority Caucus Chairman
1977



F. PAT WANAMAKER-R
FRANK - SNOHOMISH, part
Minority Vice Chairman



CAROL MONDMAN-D
GRAND - HARAD
FRANK, part
ASHTON, part
1977



CHARLIE JOHNSON-D
REGENT OF BANK



SID SNYDER-D
SECRETARY

19

77

Senate

Too Good
Photography
Renton, WA