



# WSP Aviation Overview

## Washington State Patrol Aviation Established in 1959

### Location

- Olympia Airport

### Personnel

- 4-Trooper Pilots, 1-Trooper Tactical Flight Officer (TFO), 1-Sergeant, 1-Lieutenant
- 4- Reserve TFOs
- 1- Office Manager
- 3- Aircraft Maintenance Technicians

### Aircraft

- 3- Cessna 182
- 2- Cessna 206 (FLIR)
- 1- King Air B200





# Dedicated Maintenance Staff



## Aviation Maintenance Support:

- Factory Authorized Service Center
- Avionics Technician
- Engineering
- Fabrication
- Airframe and Power Plant- A&P Certified
- Inspection Authorization- IA Certified





# King Air B-200



## Number of King Air B200:

- 1

## Missions:

- Transportation Flights
- Emergency Service Air Operations
- Wildland Fire Management
- Multiple State Agency Contracts
- 1 Hour Flight Time Response Within State
- Evidence transfer

## Crew:

- 1-pilot
- 1-Co-Pilot

## Passengers:

- 7



# Cessna-182



## Number of C-182:

➤ 3

## Missions:

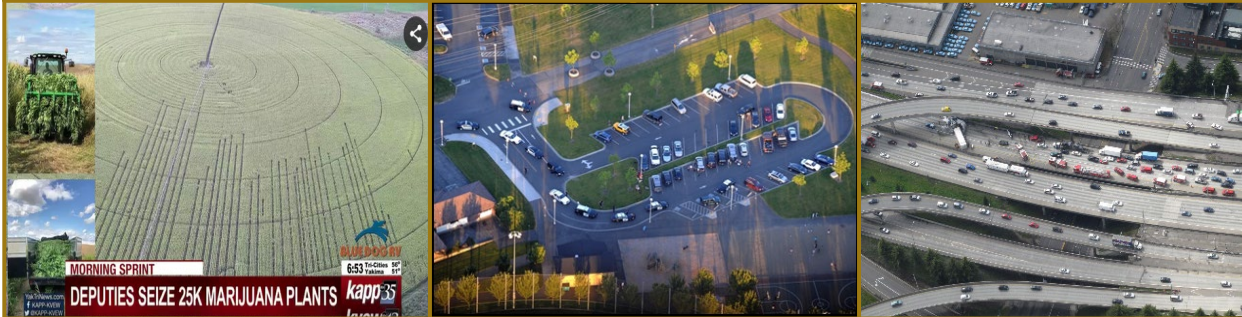
- Traffic enforcement
  - Speed, Aggressive Driver's, Pursuits
- Transportation
- Training
- Marijuana Eradication
- Photo

## Crew:

➤ 1-Pilot

## Passengers:

➤ 2



MORNING SPRINT  
DEPUTIES SEIZE 25K MARIJUANA PLANTS

6:53  
kapp35



# Cessna-206



## Number of C-206:

- 2

## Crew:

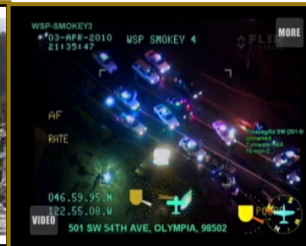
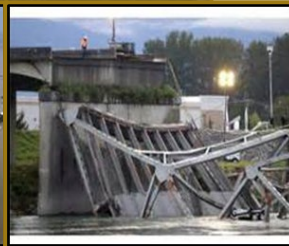
- 1- Pilot
- 1- Tactical Flight Officer (TFO)

## Passengers:

- 1

## Missions:

- Traffic Enforcement
  - Speed, Aggressive Driver's
  - Pursuits, DUI Enforcement
- Aerial Surveillance
- Aerial Photography
- Video Imaging
- Homeland Security
- All Hazards Response Aircraft
- Drug, Marijuana Eradication
- U.S. Navy Security
- Demonstration/Rally's





# Specially Equipped Cessna-206



## Featured Capabilities

- Stabilized aerial imaging system with Forward Looking Infrared (FLIR)
- Microwave digital downlink system
- Digital recorders
- Media computers/software in Olympia for dubbing and DVD production
- GPS overlay moving map system
- Premier Mobile Data Computer (PMDC)
- High resolution monitors for the Tactical Flight Officer and Pilot
- Night capabilities - Terrain Awareness and Warning System (TAWS) and radar altimeter
- Audio/Video Production Capabilities- Expedites Information Delivery



# Mapping Capabilities

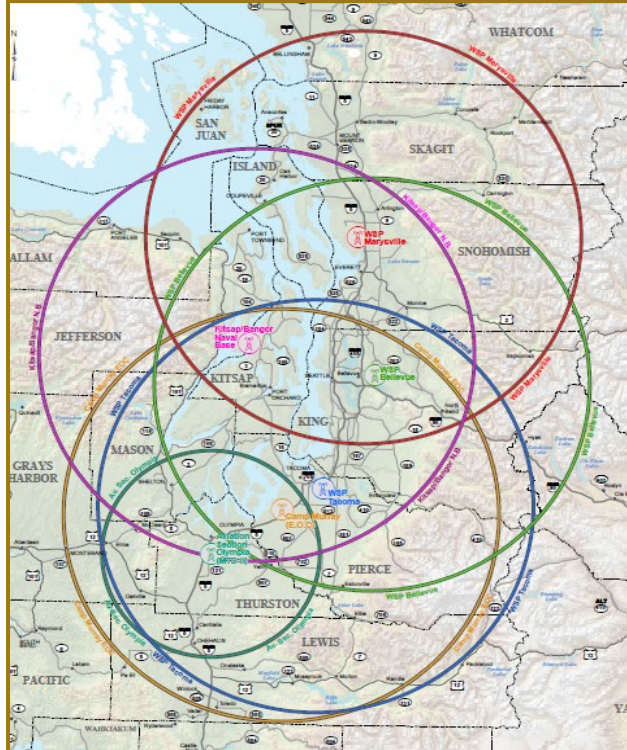


## The Augmented Reality System (A.R.S.) Features:

- Overlay mapping on video
- Geopoint
- Speed of a moving target
- Map layers- Synthetic, Aviation, Streets
- Streets
- Mileposts
- Property boundaries
- Residences
- Businesses
- Schools
- Points of Interest
- Vessel hull Identification
- Ferry Terminals
- And many other layers



# Video Downlink



## Video Receiver Sites

- WSP Tacoma
- WSP Bellevue
- WSP Marysville
- Camp Murray E.O.C.
- Kitsap/Bangor Naval Base

## Mobile Receivers

- WSP SWAT BEAR Vehicles
- Hand Held Receivers

## Internet

- DS CAM





# Aerial Speed Enforcement



## Two Methods For Aerial Speed Enforcement:

### 1. Stop Watches

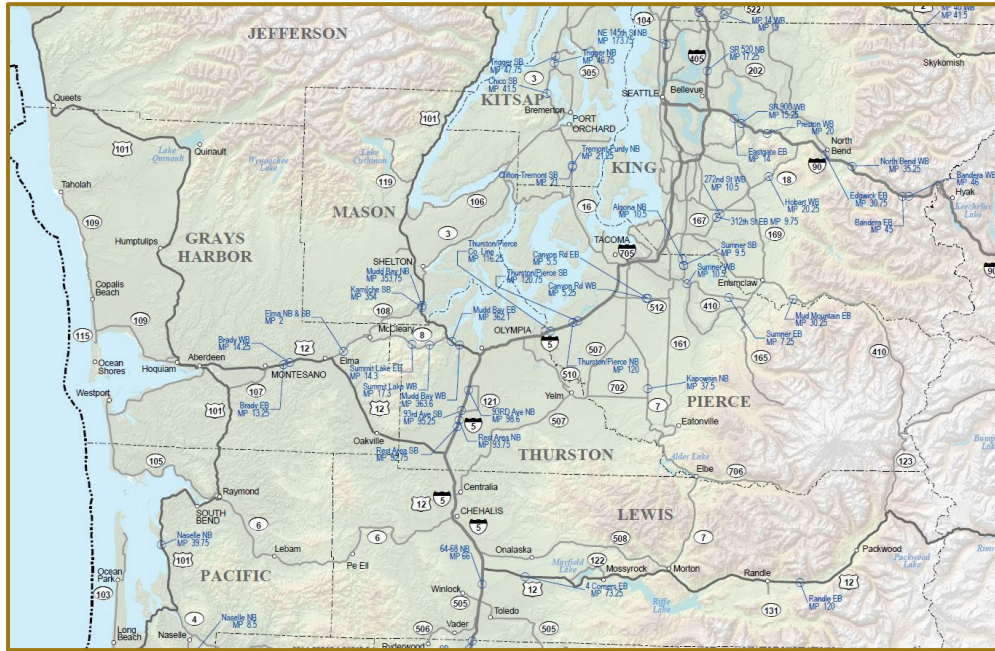
- Day Time Only
- Designated Aerial Courses
- Fixed Marks
- ½ mile apart
- 3 Mile course (average)



# Aerial Speed Enforcement

## Course Selection

There are selected stretches of various interstates and state routes which have aerial traffic marks. These are normally a few miles in length.

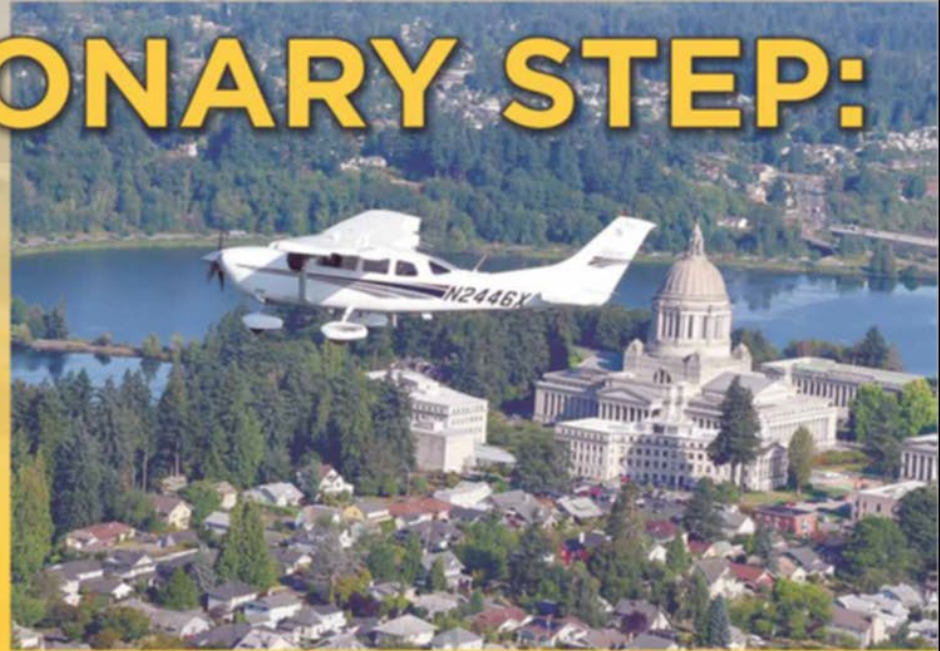




# Aerial Speed Enforcement

## AN EVOLUTIONARY STEP:

Washington State Patrol Pushes Aerial Speed Enforcement With Fixed-Wing Assets





# Aerial Speed Enforcement



## Two Methods For Aerial Speed Enforcement:

### 2. Augmented Reality System (ARS)

- Day Or Night Time
- Recording Capability
- Ability To Measure Speed Anywhere
- Statewide Enforcement
- First Law Enforcement Agency In The Nation To Initiate And Deploy






# WSP Aviation Overview

The Aviation Section is a support unit to not only the Washington State Patrol, but to other city, county, and federal agencies as well.



If you have any questions, please contact the Aviation Section at **(360) 709-1008**.

Follow WSP Aviation on  @wspaviation