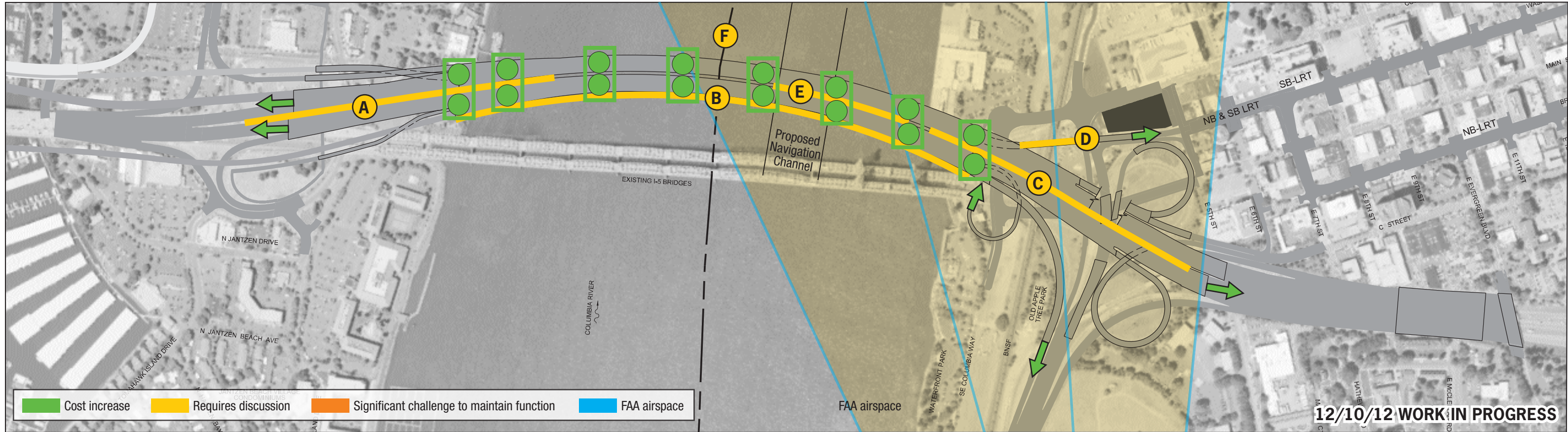


# Columbia River CROSSING Refined analysis - 115-116 feet

9-11 vessels/users potentially impacted\*



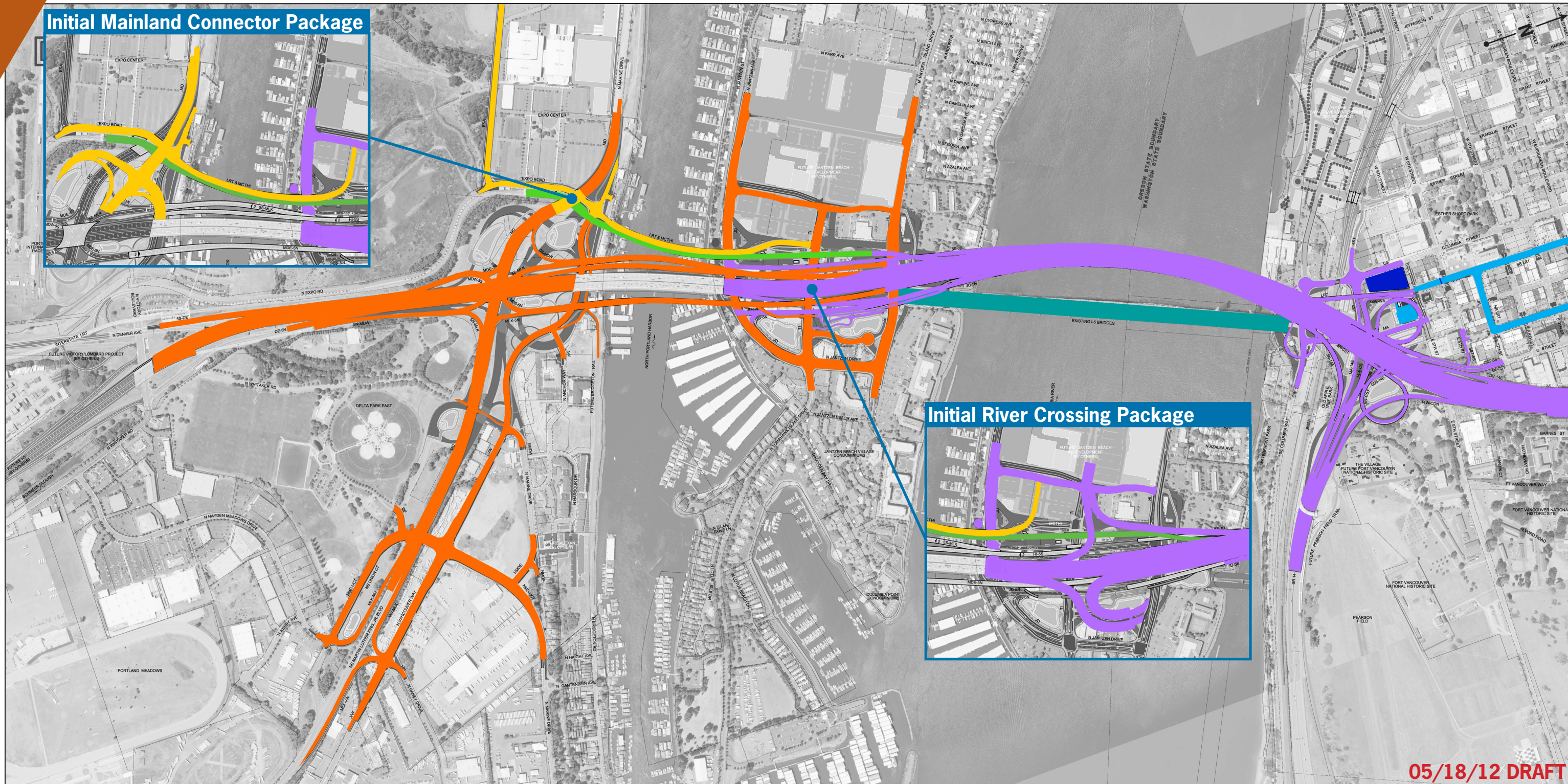
\* Potential impacts at 16 ft river stage and 10 ft air gap. Some of the vessels would pass at a lower river stage and/or with a smaller air gap. For this illustration each fabricator was represented by 1 vessel.

		Hayden Island	Main Crossing	Vancouver	TOTAL COST
<b>Cost increase estimate over 95 feet**</b>	<b>60%</b>	~ \$9 million	~ \$10 million	~ \$10 million	+/- \$30 million
<p>**Based on 2011 CEVP, does not include mitigation costs.</p> <p><b>Highway/Transit/Landside</b> 115-116 foot vertical clearance with previously described impacts for 110 foot clearance.</p>		<p><b>A</b> In Oregon the mainline grade increases to 3.8% from 2.8%. This would need a design exception for a grade above 3%.</p>	<p><b>B</b> More traffic analysis needed to address changes to traffic operations due to increased grades.</p> <p><b>E</b> Top of roadway deck at centerline is 21' below FAA surface.</p> <p><b>F</b> Foundation sizes may increase, however, they are still consistent with FEIS.</p>	<p><b>C</b> In Washington the mainline grade increases to 4.0% from 3.4%.</p> <p><b>D</b> Transit grade on Washington approach is 6% for an additional 130 feet.</p>	



# Columbia River CROSSING Proposed Construction Packages for full project\*

\*Subject to change, each package may be one or more construction contracts.



- River Crossing and approaches (6 years, starting 2014)
- Mainland connector to Hayden Island (2 years, starting 2015)
- Park and rides (and misc. transit) (2 years, starting 2015)
- WA Transit (4-5 years, starting 2015)
- OR Transit (3-4 years, starting 2016)
- Marine Drive/Hayden Island (4 years, starting 2018)
- Bridge demolition (1.5 years, starting 2021)



# Columbia River CROSSING Proposed Construction Packages for full project\*

\*Subject to change, each package may be one or more construction contracts.



05/18/12 DRAFT

**Purple** River crossing and approaches  
(6 years, starting 2014)

**Blue** Park and rides (and misc. transit)  
(2 years, starting 2015)

**Cyan** WA Transit  
(4-5 years, starting 2015)

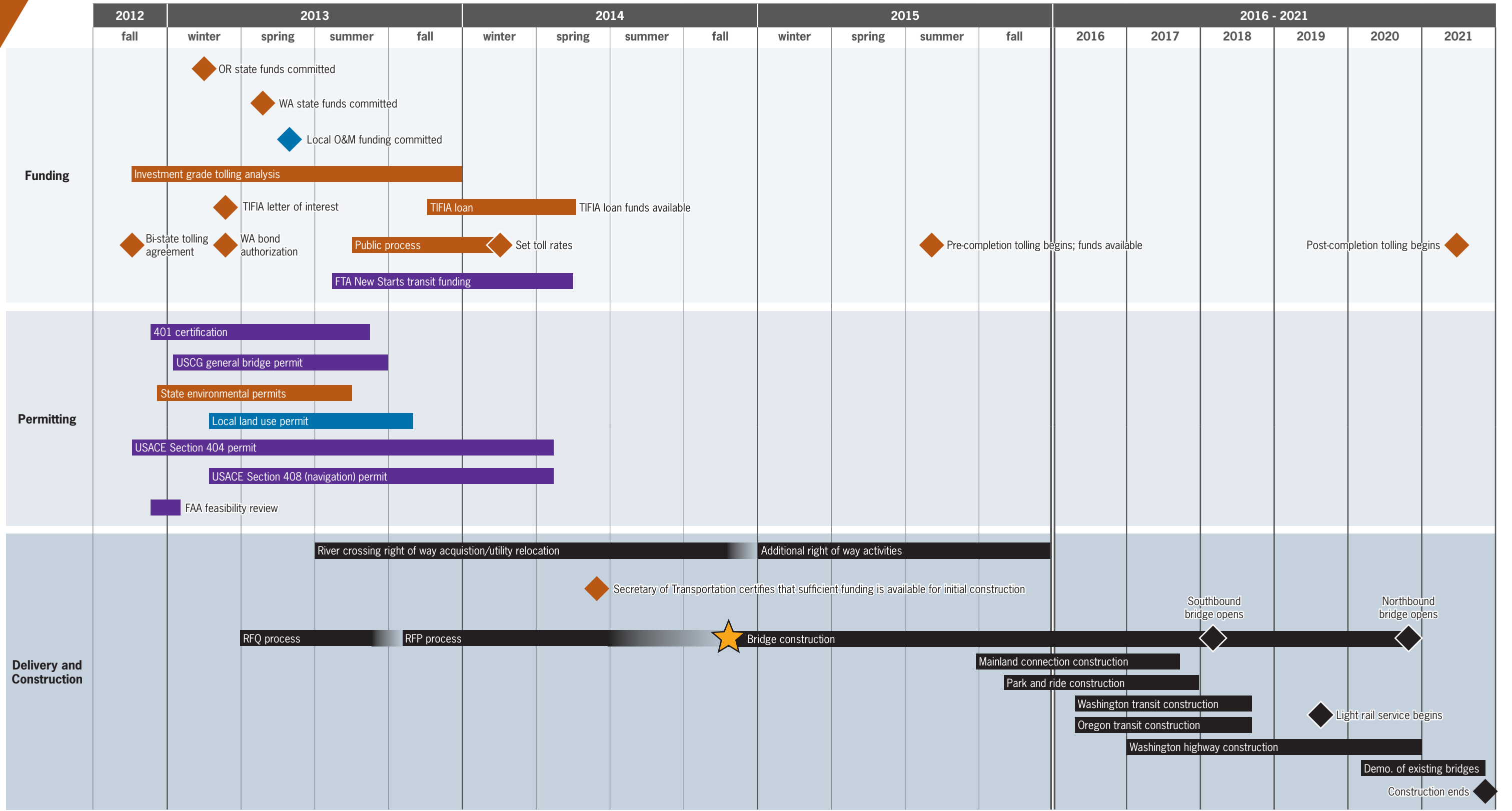
**Magenta** WA North (Mill Plain Blvd., Fourth Plain Blvd., 29th St., 33rd St., SR 500)  
(5 years, starting 2016)

**Teal** Bridge demolition  
(1.5 years, starting 2021)



# Columbia River CROSSING Project Master Plan

DRAFT



◆ State ◆ Local ◆ Federal

Updated 12/10/12