

# JTC – City Transportation Needs Panel

## July 24, 2013

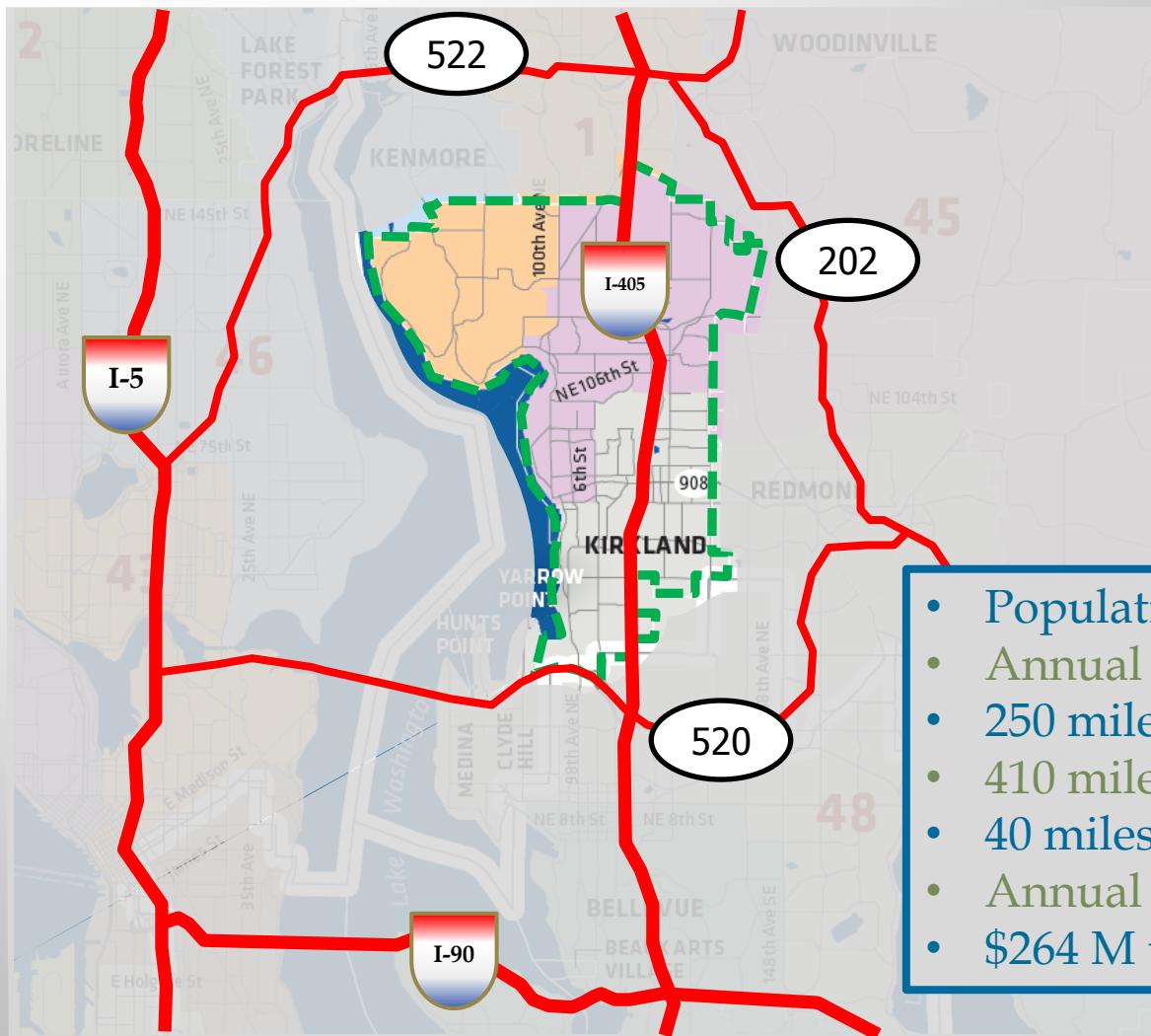
City of Kirkland

Ray Steiger, P.E.  
Deputy Director of Public Works



- **Kirkland demographics**
- **Regional/external influences**
- **Local drivers, issues, and needs**
- **Current Strategies**
- **How the State can help**





- Population (2012) – 81,000
- Annual General Fund \$141 M
- 250 miles of roads
- 410 miles of paths/sidewalks
- 40 miles of bike lanes
- Annual transportation invest \$9 M
- \$264 M unmet transportation needs

## Kirkland demographics

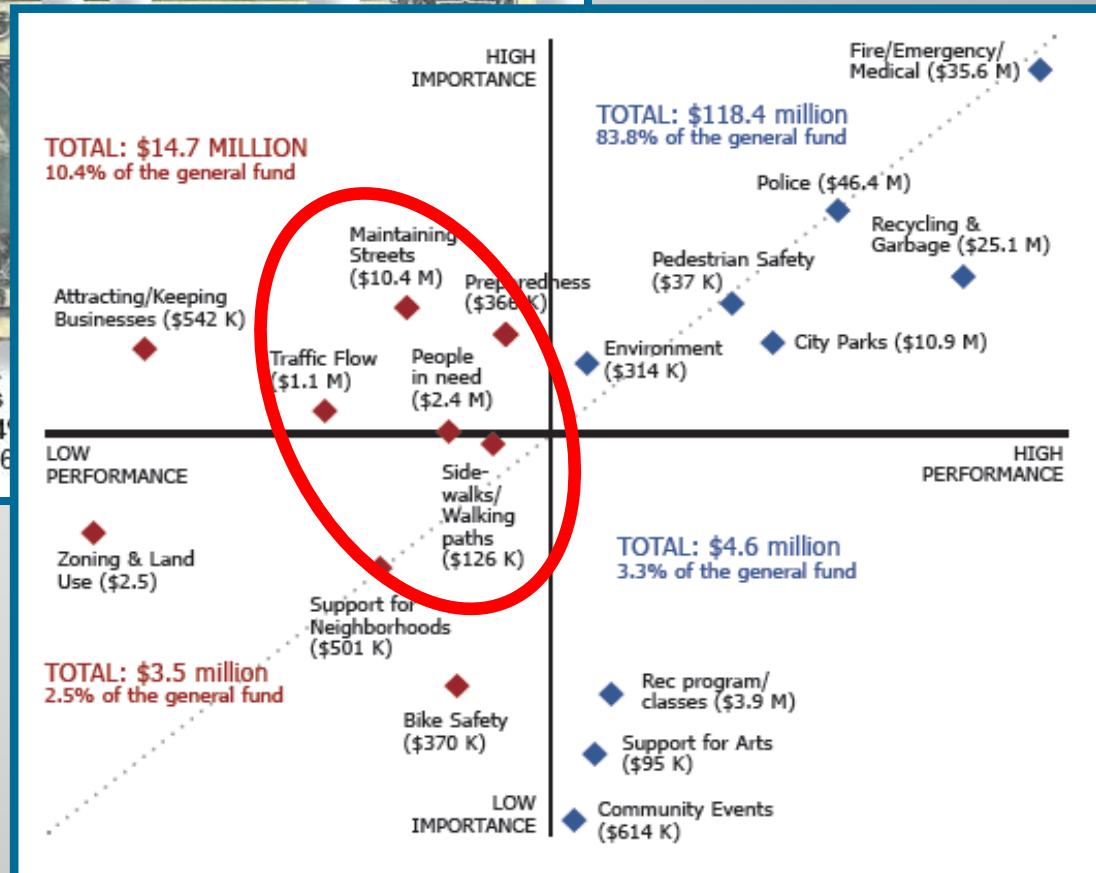
### JTC – City Transportation Needs Panel



Property taxes 19.6% \$33,573,159	External charges 7.5% \$12,887,515	Internal charges 6.2% \$10,686,711	Business tax 2.7% \$4,679,290
---	--	--	-------------------------------------

Other taxes 7.1% \$12,269,790	Other revenue 12.3% \$21,068,491	Resources 10.4% \$17,886,000
-------------------------------------	--	------------------------------------

- Allocation of revenue
- Priority Matrix
- Quadrant importance



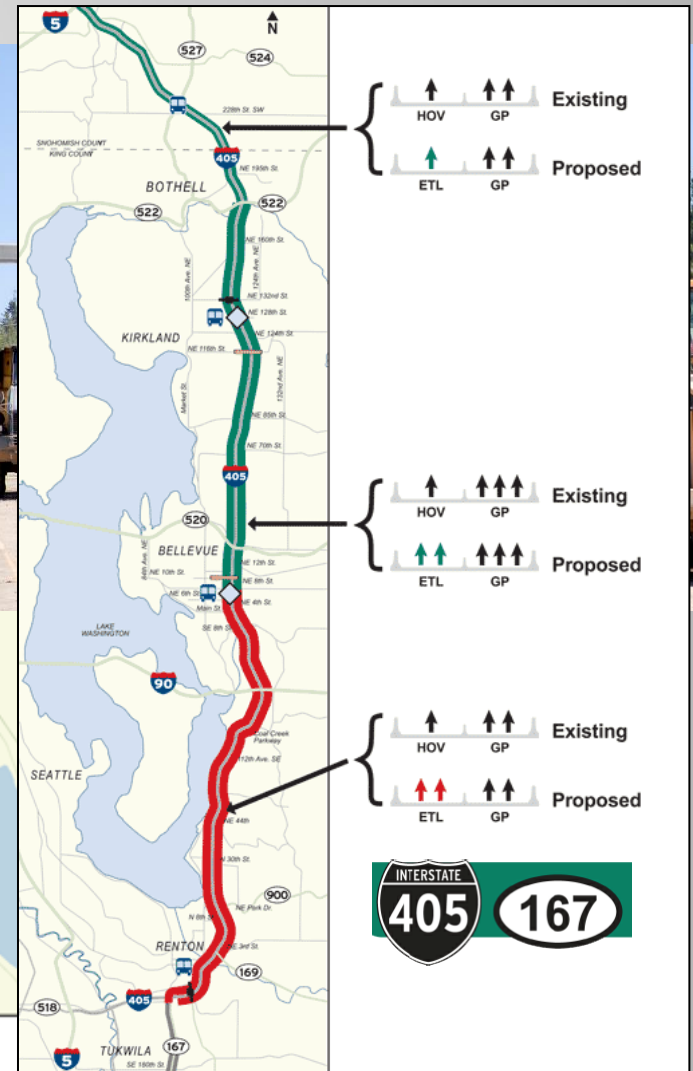
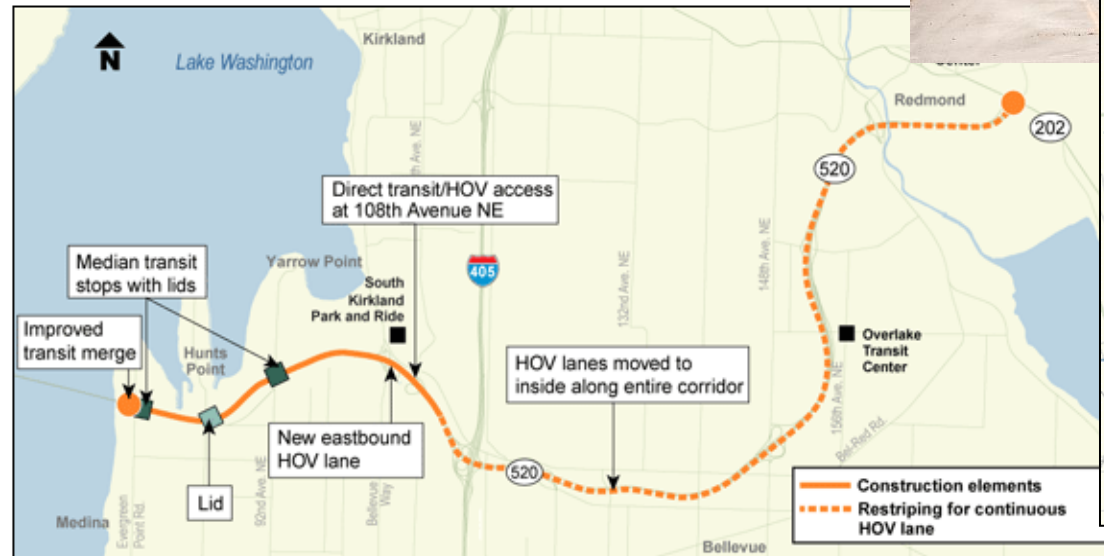
Kirkland demographics

JTC – City Transportation Needs Panel



## SR 520 Bridge Program: Medina to SR 202 Eastside Map

### Project features



### Regional/external influences

### JTC – City Transportation Needs Panel

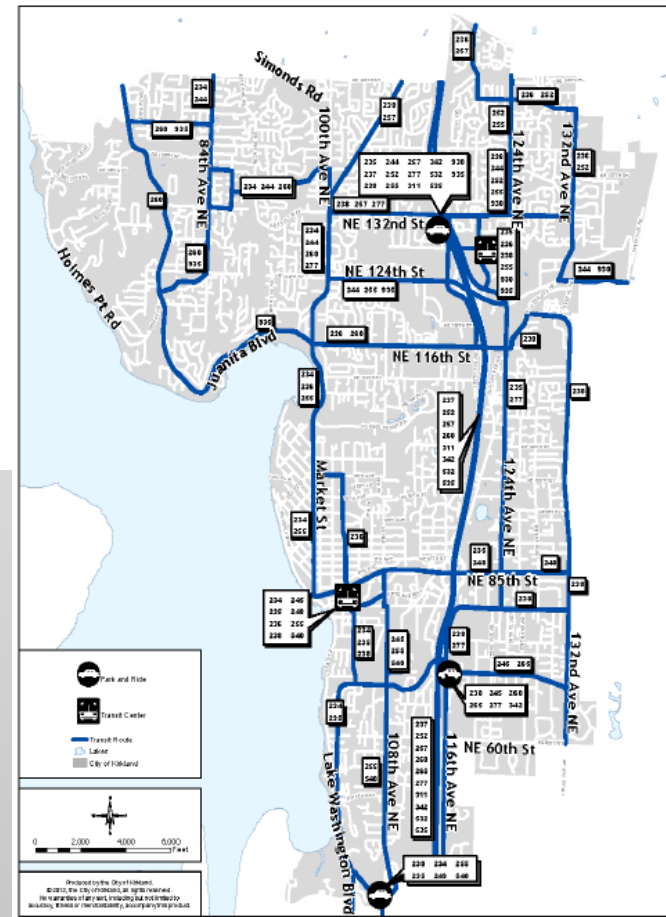


## Progress Report ST3 Planning



## State Revenue Forecast Increase and Metro's Shortfall

JUNE 21, 2013 AT 11:30 AM BY MATTHEW JOHNSON



Regional/external influences

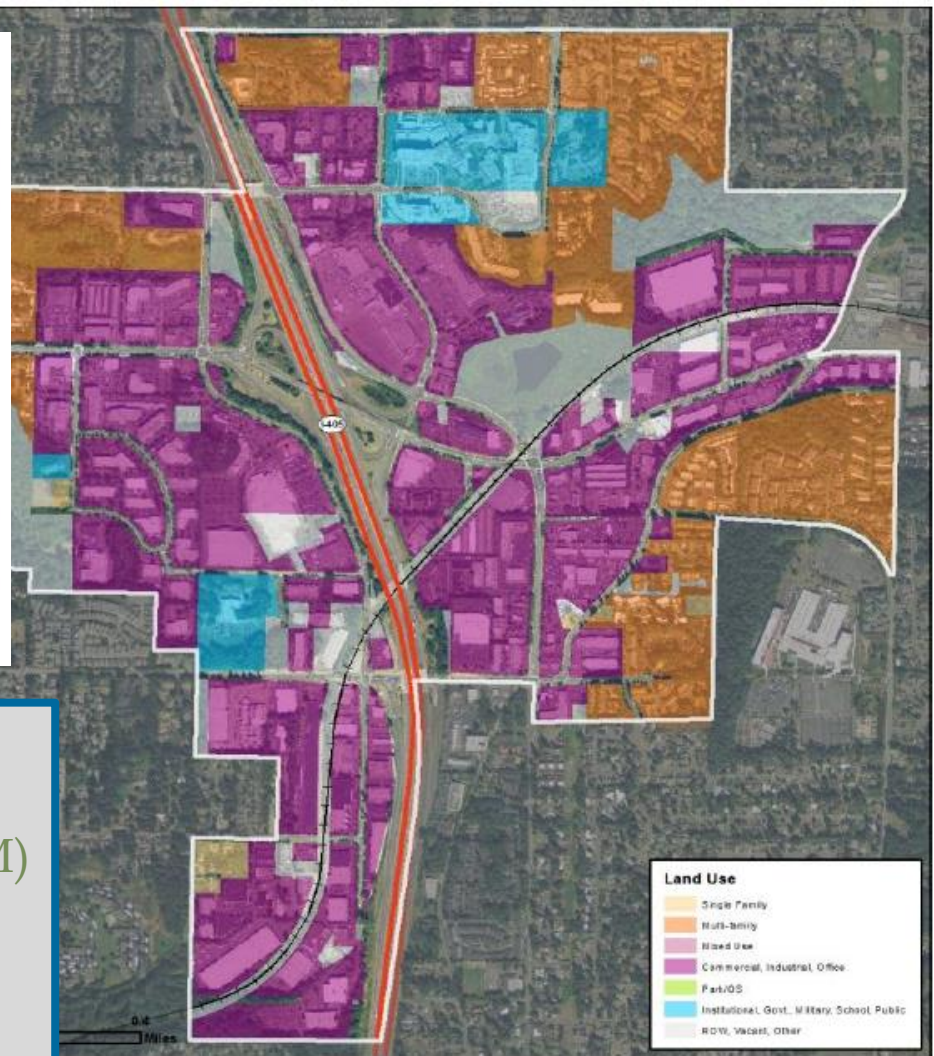
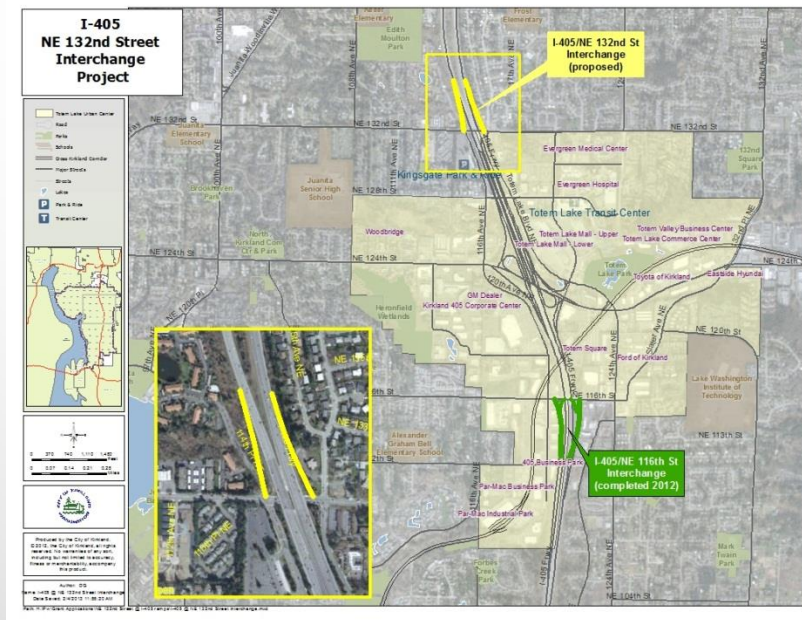
JTC – City Transportation Needs Panel











- Totem Lake Urban Center
- \$2 M in Property Tax to Kirkland
- 30% of Kirkland's revenue (\$4.4 M)
- \$33.7 M Sales Tax to State
- Greatest density
- Myriad of un-connected facilities

Local drivers, issues, and needs

JTC – City Transportation Needs Panel





ADT = 18,000

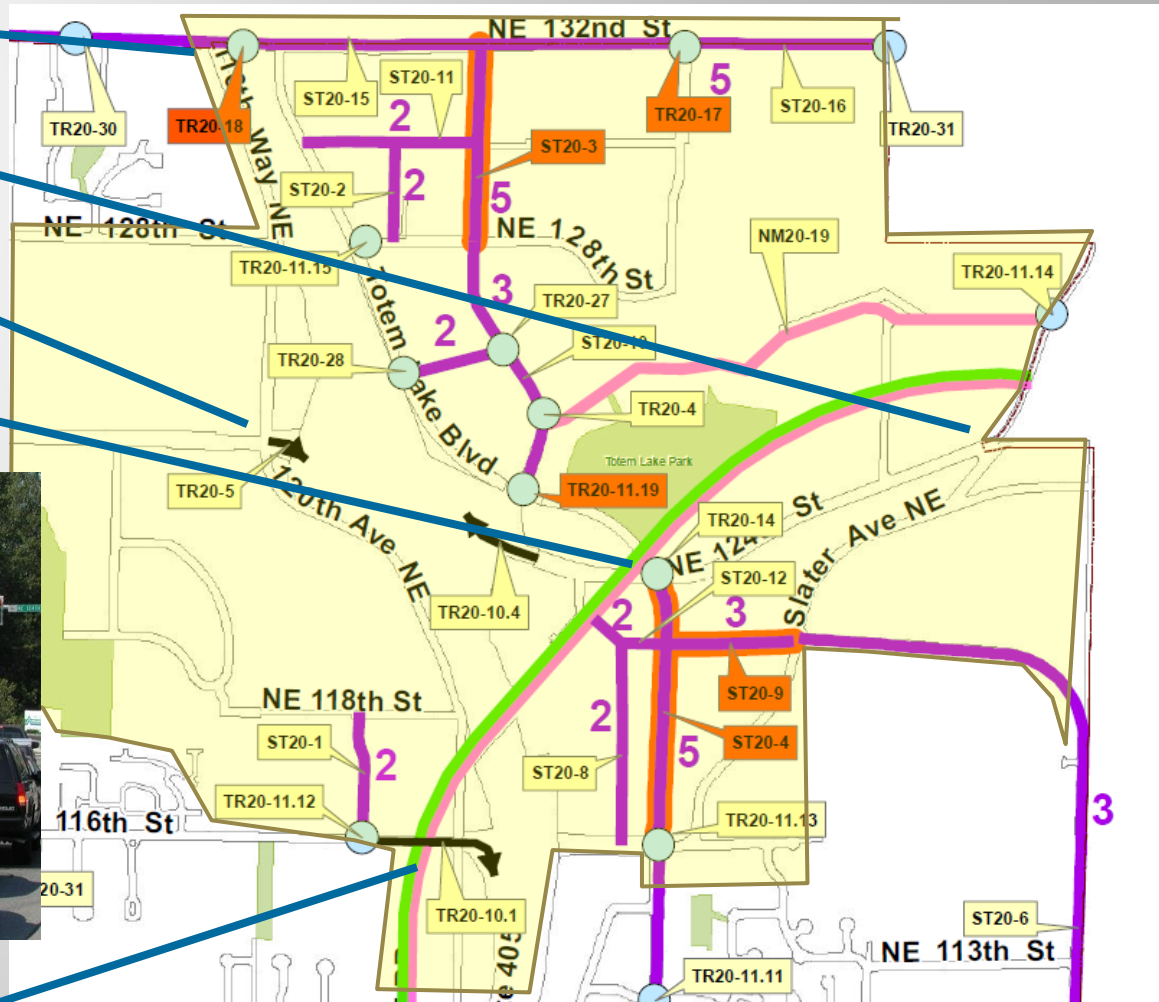
ADT = 40,000

ADT = 38,000

ADT = 32,000



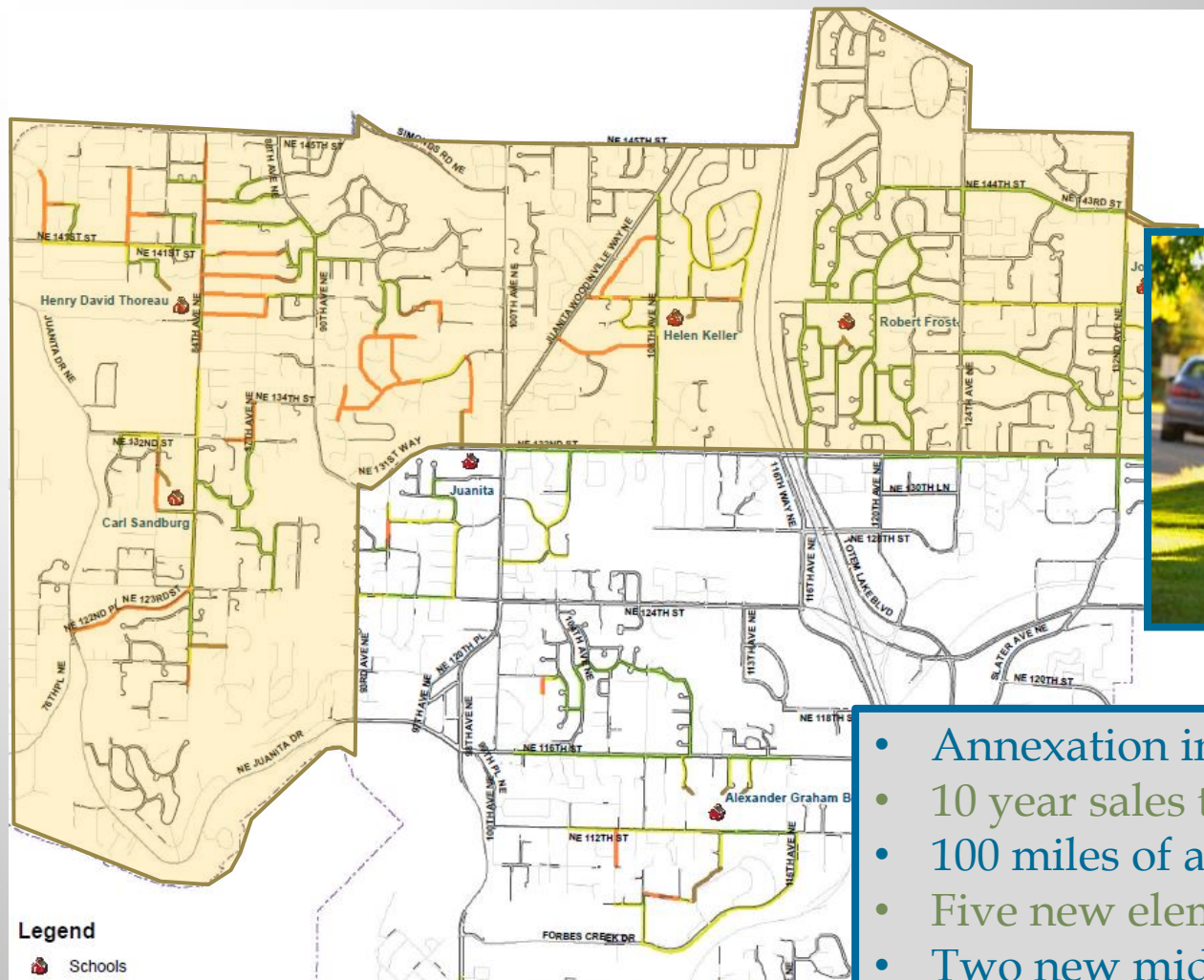
ADT = 28,000



Local drivers, issues, and needs

JTC – City Transportation Needs Panel





- Annexation in 2011 per GMA
- 10 year sales tax credit
- 100 miles of added roads
- Five new elementary schools
- Two new middle schools
- Many new needed sidewalks

Local drivers, issues, and needs

JTC – City Transportation Needs Panel





Issuance Date: August 1, 2012  
Effective Date: August 1, 2013  
Expiration Date: July 31, 2018

## Western Washington Phase II Municipal Stormwater Permit

National Pollutant Discharge Elimination System and  
State Waste Discharge General Permit  
for discharges from Small Municipal Separate Storm Sewers  
in Western Washington

State of Washington  
Department of Ecology  
Olympia, Washington 98504-7600

## Accessible Sidewalks and Street Crossings — an informational guide



- Increasing federal/State requirements
- Implementation schedules

Local drivers, issues, and needs

JTC – City Transportation Needs Panel







Washington State  
Department of Transportation  
Paula J. Hammond, P.E.  
Secretary of Transportation

Transportation Building  
310 Maple Park Avenue S.E.  
P.O. Box 47300  
Olympia, WA 98504-7300  
360-705-7000  
TTY: 1-800-833-6388  
www.wsdot.wa.gov

May 16, 2011

Mr. Ray Steiger  
Interim Public Works Director  
City of Kirkland  
123 Fifth Avenue  
Kirkland, WA 98033-6189

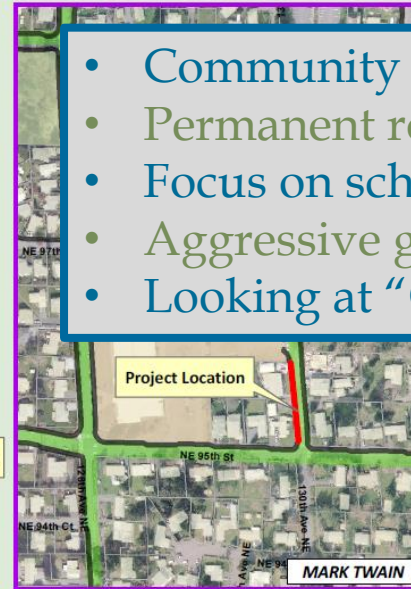
### 2011 Safe Routes to School Federal Funding

Dear Mr. Steiger:

WSDOT is pleased to advise you that in the 2011-13 Transportation Budget the following project was selected to receive federal funding through the Safe Routes to School program. The federal funding is limited to:

Peter Kirk Elementary

\$456,600



- Community outreach
- Permanent road & safety levy
- Focus on school walk routes
- Aggressive grant applications
- Looking at "Concurrency"

Current strategies

JTC – City Transportation Needs Panel





# DEPARTMENT ECOLOG State of Washing

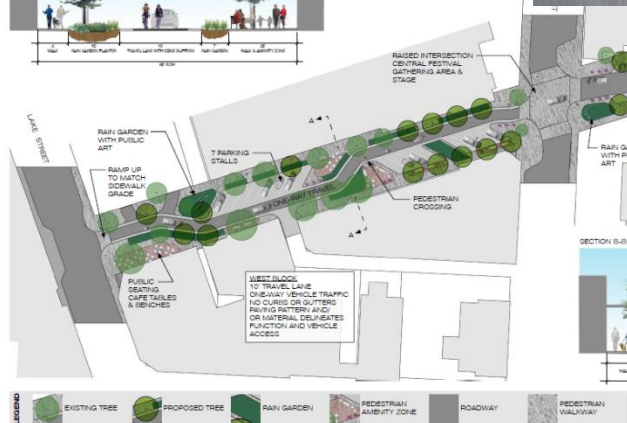
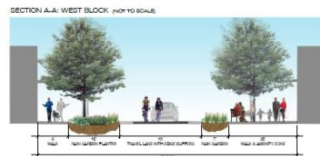
## FY 2012 STORMWATER RETROFIT AND LID GRANT PROGRAM FUNDING AGREEMENT

BETWEEN  
THE STATE OF WASHINGTON DEPARTMENT OF ECOLOG  
AND

CITY OF KIRKLAND

GRANT AGREEMENT NUMBER

PARK LANE I



- Low cost alternatives
- Low impact development
- New Grant sources

Current strategies

JTC – City Transportation Needs Panel



9-P-111(003)-1 - KIRKLAND  
NE 120th Street - Slater Ave NE to NE 124th Ave

FY 2013 Urban Corridor Program (UCP)



Transportation Improvement Board  
**Performance Management Dashboard**

## TIB At A Glance

### Financial Status

TIA Fund Balance

\$40,820,744



SCPSA Fund Balance

\$2,258,284

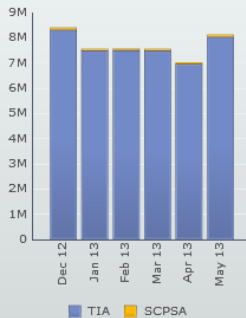


Project Payments (MTD)

\$7,304,590.54

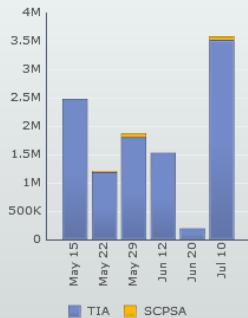
### Gas Tax Revenue

Recent Activity



### Accounts Payable

Recent Activity



### Project Status

Remaining TIB Commitment

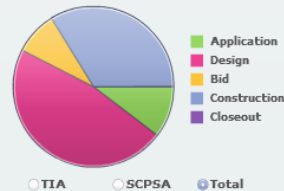
\$237,076,322

348 Active Projects

3 Completed Projects

164 Under Construction

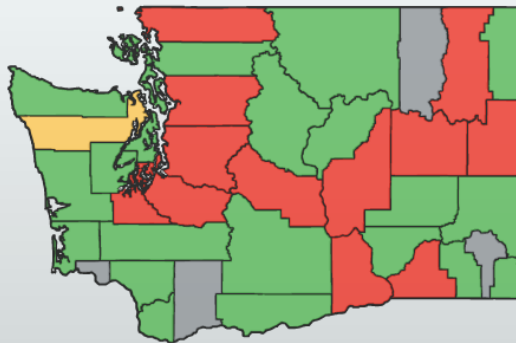
Remaining Commitment by Phase



Change in TIB Funds (MTD)

\$60,740

Current Inventory Status

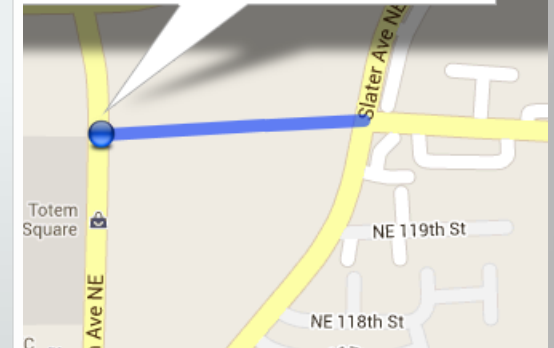


et  
to NE 124th Ave



Phase: Design  
\$ 800,000

It's a new road connecting Slater Ave NE and NE 124th Ave. It has 4 lanes, a two-way left turn lane, bicycles lanes, planter strips, sidewalks. A new signal will be constructed at NE 124th Street. The road will be collected and treated using low impact development techniques. LED lights will be used for illumination and traffic signals.



### Key Performance Indicators

Delayed Projects .:|:. Transaction Processing .:|:. TIB Commitment Level .:|:. Net Revenue .:|:. Construction Payments .:|:. Ave

Current strategies

JTC – City Transportation Needs Panel





- Grant criteria should reward those addressing needs:
  - 2012 Proposition 1
  - Local funds to Purchase CKC
  - Aligning spending with Comp Plan
  - Strong maintenance efforts
- Extend REET flexibility
- Pass meaningful local options providing cities direct authority to address large unmet need
- Improve NPDES II for local agencies/specific locations
- Provide mitigation funds for 405 tolling
- Fund I-405/NE 132<sup>nd</sup> ramps to Totem Lake UC

**Thank you**

**City of Kirkland**

**[rsteiger@kirklandwa.gov](mailto:rsteiger@kirklandwa.gov)**

