

City of Mount Vernon, Washington
June 2016

RAIL – ROAD CONFLICTS

Safety

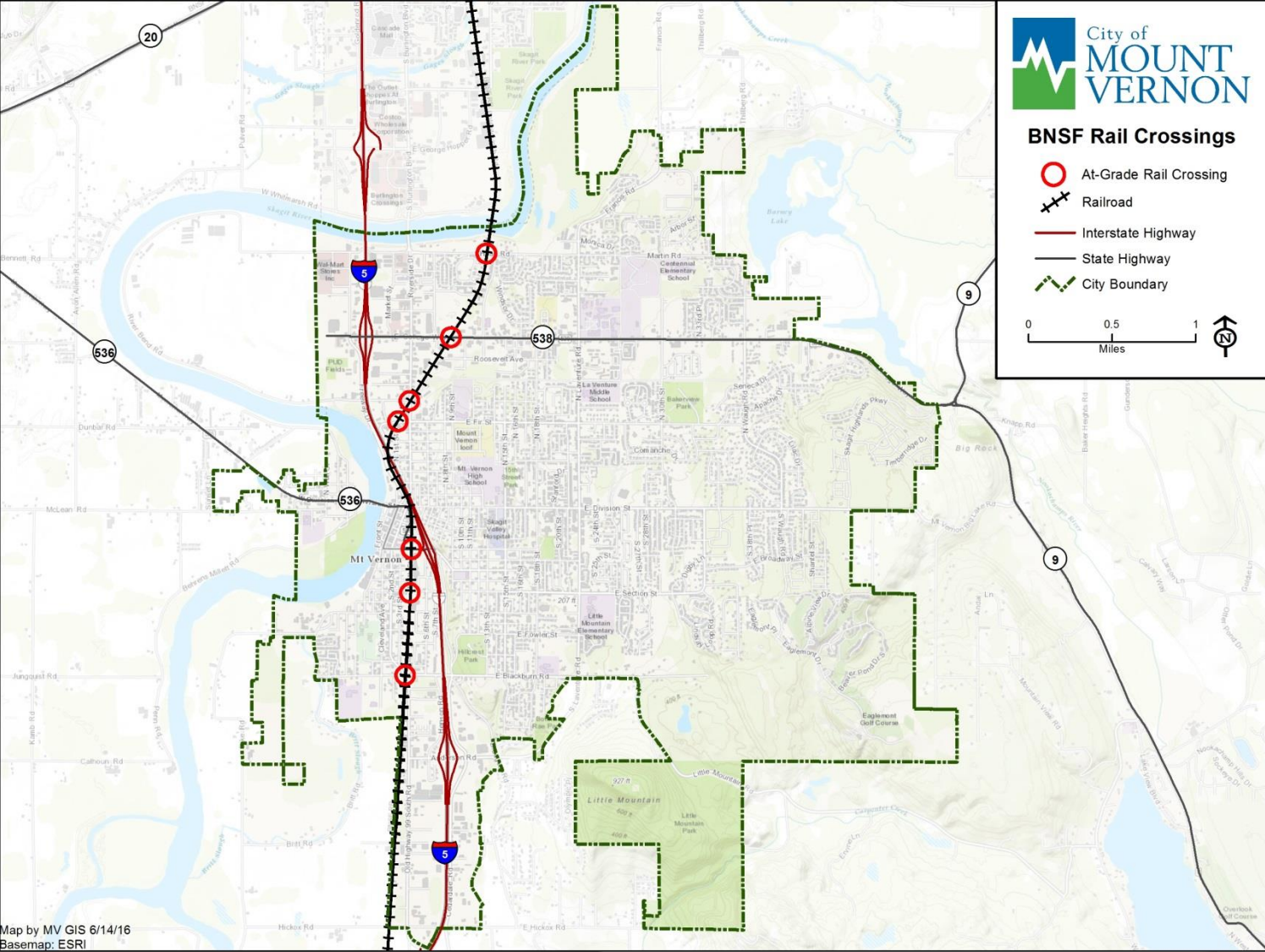
Economic vitality – traffic

Maintenance of crossings

Fixes



City of Mount Vernon

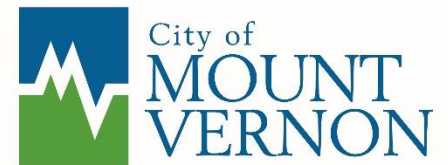


Map by MV GIS 6/14/16
Basemap: ESRI

Rail safety

Training

Oil & Coal transportation



Economic vitality – traffic flow disruption

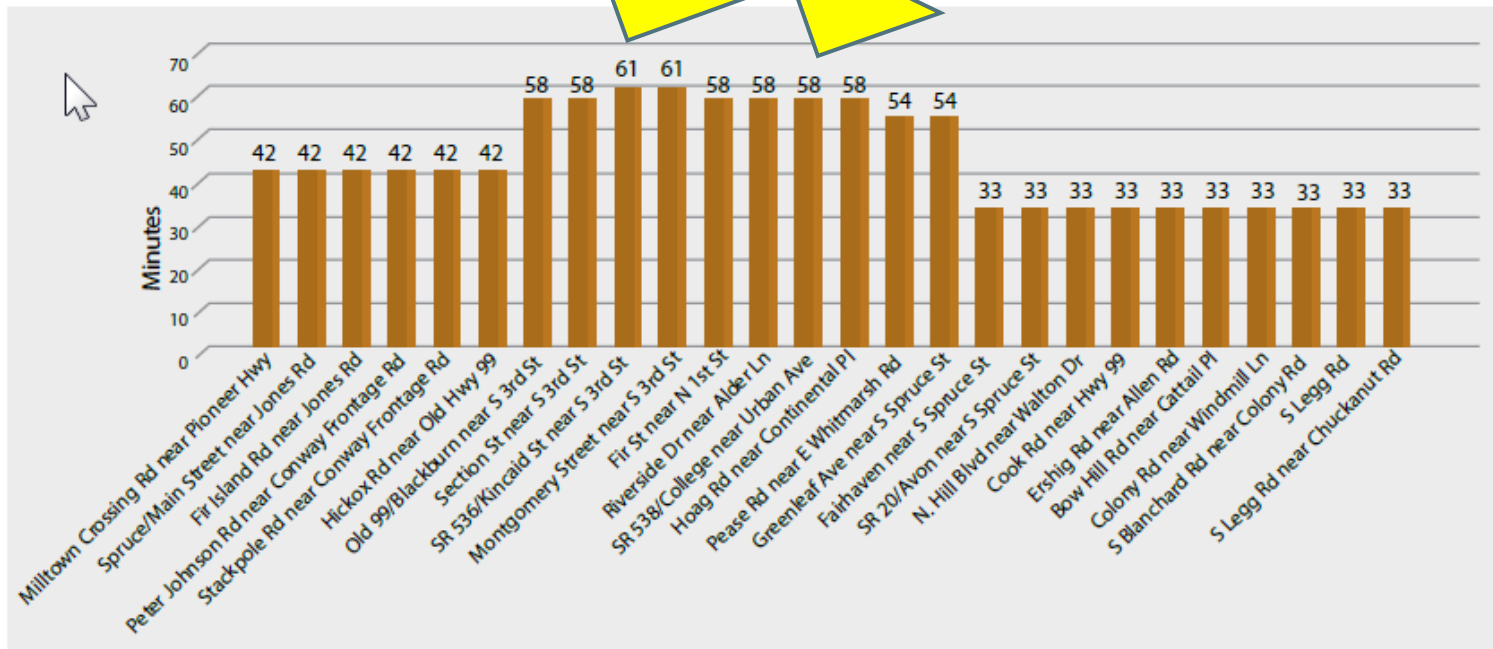


Figure 3. Existing Daily Gate-Down Time (minutes) on the North-South Mainline

Maintenance of crossings



Fixes

Grade separation = \$30 million

