



# PRIORITIZATION OF PROMINENT ROAD-RAIL CONFLICTS

Joint Transportation Committee Meeting

June 21, 2016

# PRESENTATION OVERVIEW

- Project Overview
- Work Program Approach
- Database Framework
- Next Steps



# LEGISLATIVE DIRECTION FOR THE STUDY

## 2ESHB 1299, Section 204(3)

*(3) \$250,000 of the motor vehicle account—state appropriation, from the cities' statewide fuel tax distributions under RCW 46.68.110(2), is for a study to be conducted in 2016 to identify prominent road-rail conflicts, recommend a corridor-based prioritization process for addressing the impacts of projected increases in rail traffic, and identify areas of state public policy interest, such as the critical role of freight movement to the Washington economy and the state's competitiveness in world trade.*



# PROJECT OBJECTIVES

- Understand Current and Future Mobility, Community Impacts, and Safety Problems
- Understand and Apply State, Local, and Private Policy Interests
- Develop a Criteria-Based Prioritization Process



# ROSTERS AND ROLES

## ADVISORY PANEL MEMBERS

1. Paul Roberts, City of Everett, AWC
2. Sean Guard, City of Washougal, AWC
3. Lisa Janicki, Skagit County, WSAC
4. Al French, Spokane County, WSAC
5. Kevin Murphy, Skagit COG
6. Ashley Probart, FMSIB
7. Dave Danner, UTC
8. James Thompson, WPPA
9. Ron Pate, WSDOT
10. Johan Hellman, BNSF
11. Sheri Call, Washington Trucking Association

***\*Project includes a Staff Work Group***

# WHAT ARE ROAD-RAIL CONFLICTS?

## *Locations where rail lines and roadways intersect*

Example Types of Conflicts:

- Collisions between trains and vehicles/pedestrians
- Long and unpredictable travel delays for both the general public and freight users
- Temporary impacts to emergency vehicle routing or access to communities

# WHAT IS THE PROJECT?

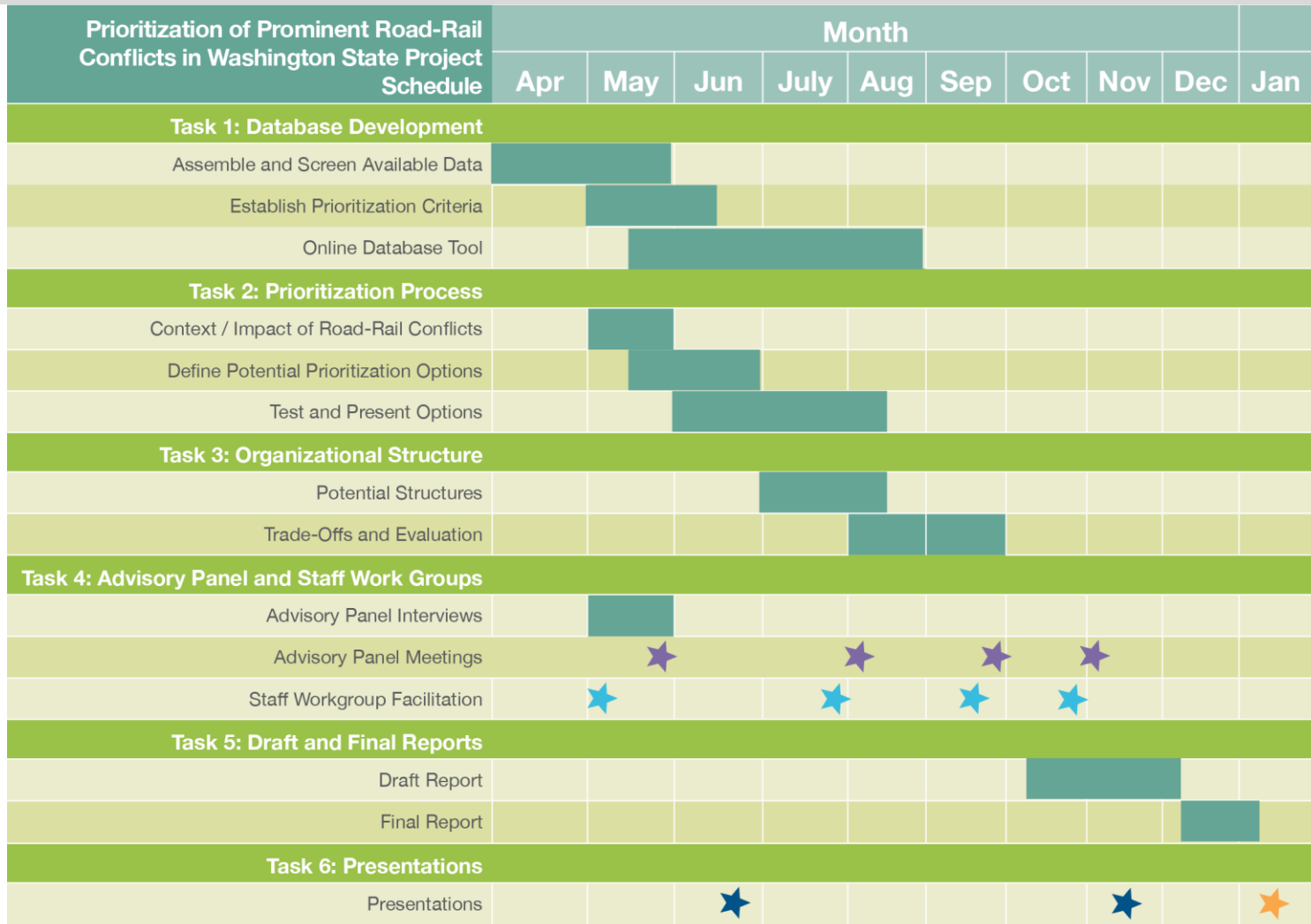
## The Project **IS**:

- Unified Database of Crossings
- Development of a Prioritization Process Framework
- Commodity Neutral

## The Project **IS NOT**:

- Development and Ranking of a Project List
- Funding Request

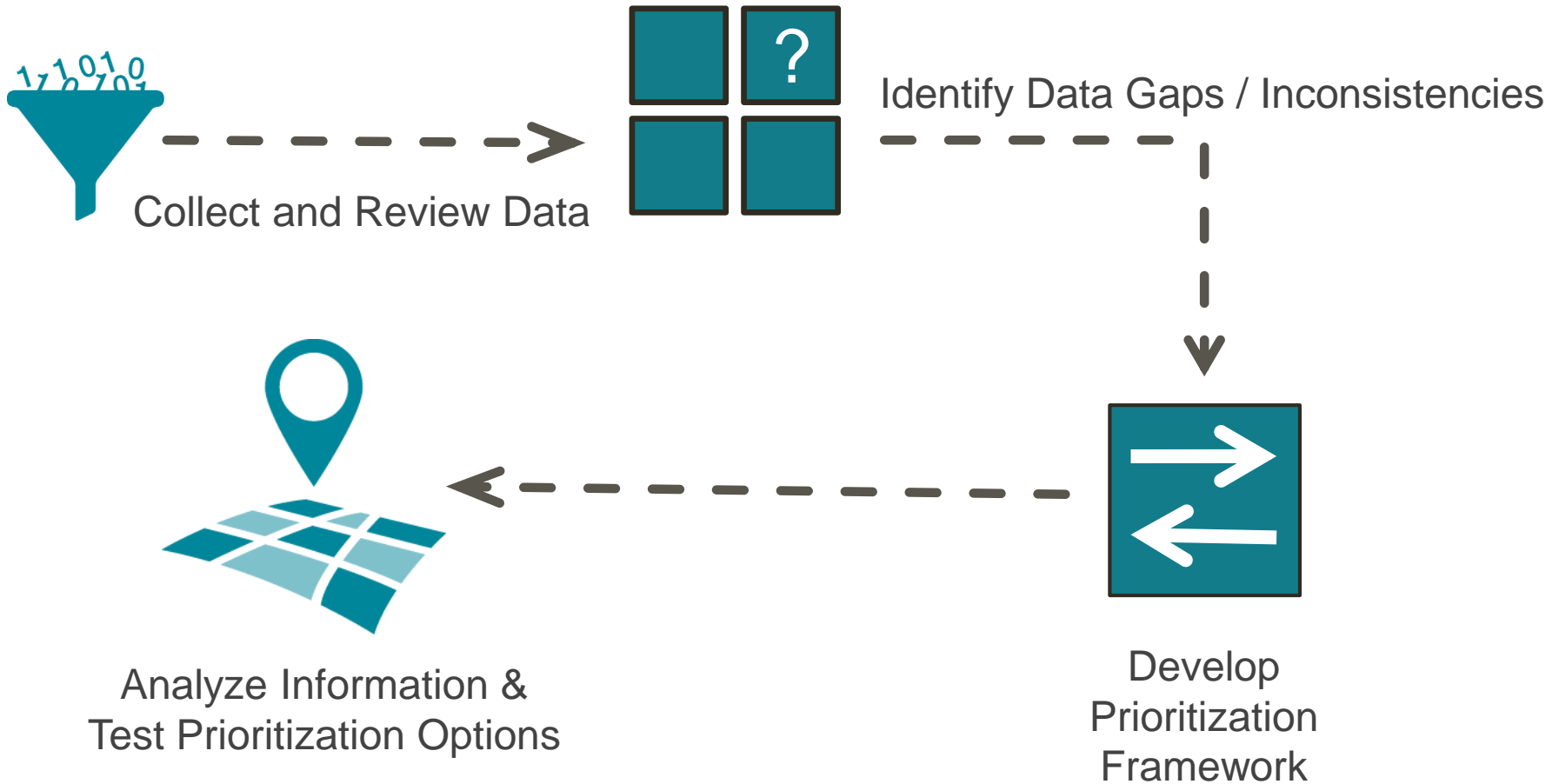
# SCHEDULE



- ★ Advisory Panel Meeting
- ★ Staff Workgroup
- ★ Presentation
- ★ Presentation During 2017 Legislative Session



# WORK PROGRAM APPROACH



# DATA SOURCES



RTPOs/MPOs

Cities/Counties

Pacific Northwest

Marine Cargo Forecast



## TYPICAL DATA LIMITATIONS

- Not readily available
- Outdated data
- Inconsistent sourcing and not available for all crossings
- Real-world fluctuations not reflected in data

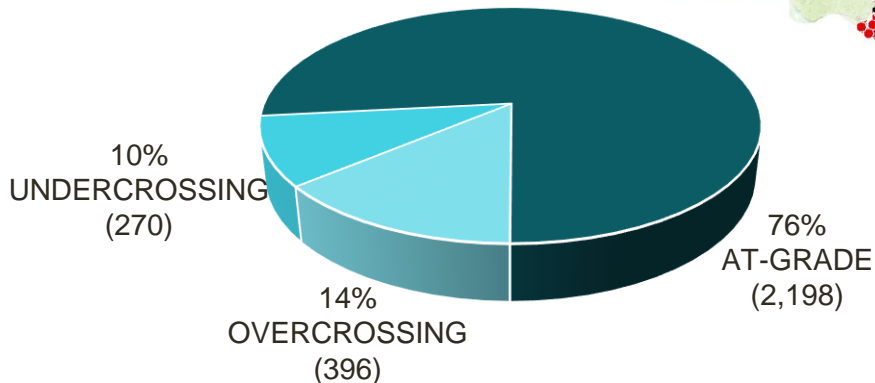
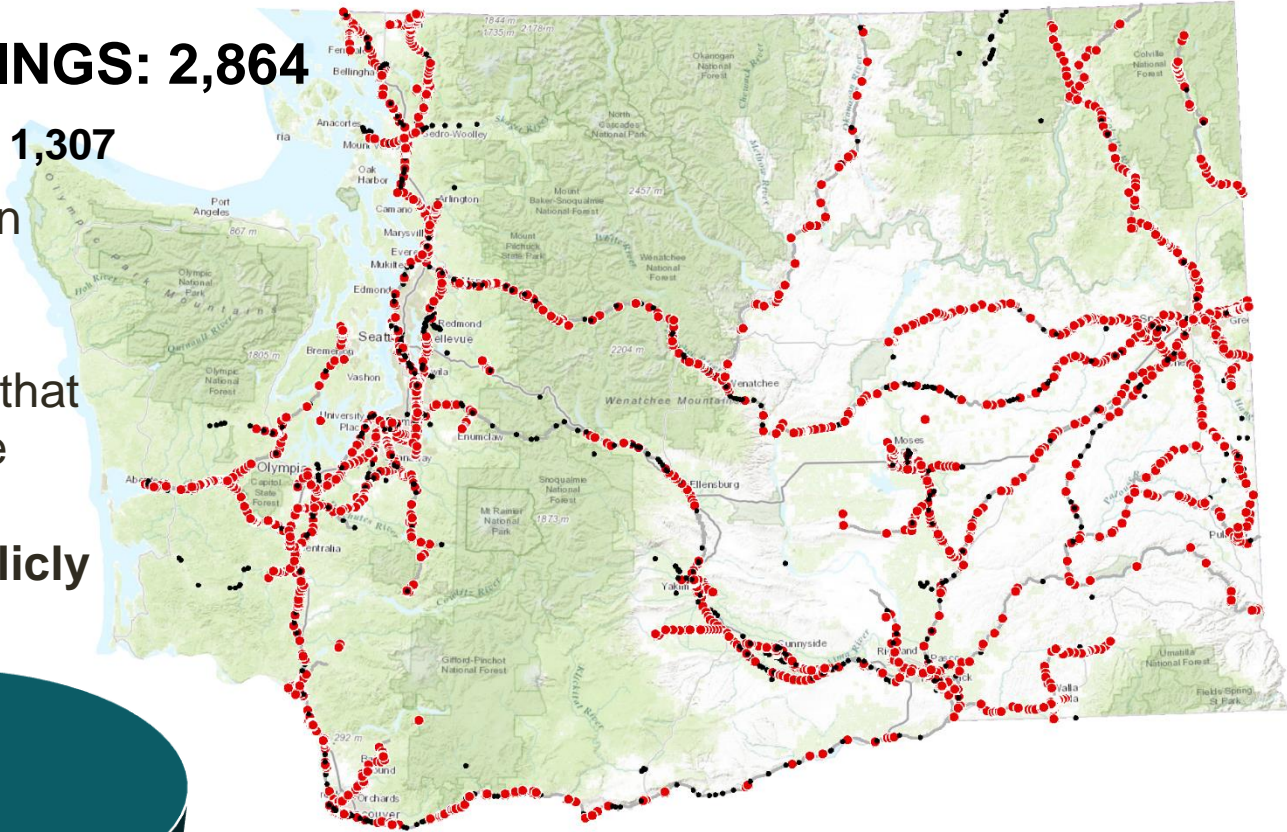
# RAIL CROSSING SUMMARY

● **ACTIVE CROSSINGS: 2,864**

● **OTHER CROSSINGS: 1,307**

Study crossings have been identified based on the following criteria:

- Along **active rail lines** that are not scheduled to be closed.
- Identified as being **publicly accessible**



***\*The database and prioritization framework will only include at-grade crossings***

# TWO-STEP SCREENING PROCESS

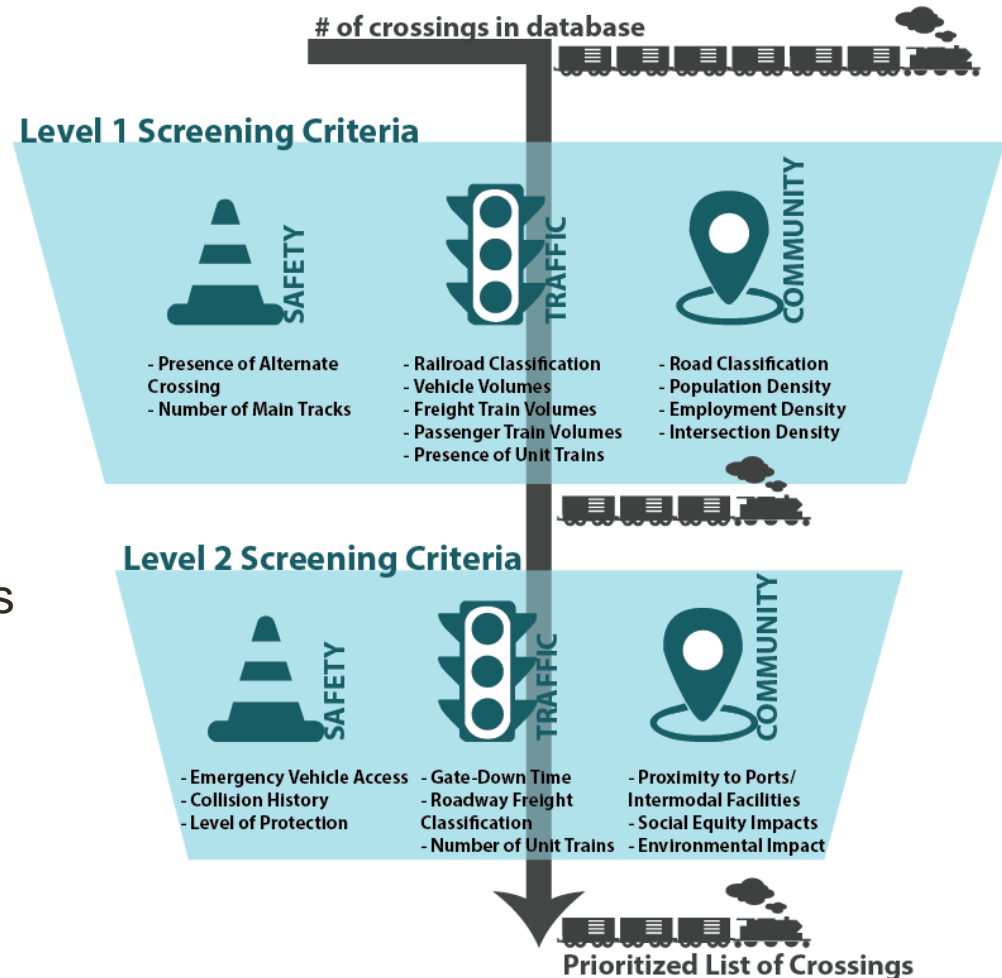
A **Two-Step Screening Process** is being used to **focus detailed evaluation** on the **most prominent crossings** in the state.

## Level 1 Criteria (Preliminary Screening):

- Less detailed
- Identifies likely higher priority crossings
- Removes lowest priority crossings

## Level 2 Criteria (Detailed Screening):

- More detailed
- Prioritizes the most prominent crossings



# PROPOSED DATABASE STRUCTURE

## Data/Information for Each Crossing

At-Grade Crossings

USDOT Crossing Number	City	Railroad Class	Vehicle Volume	Train Volume
XXXXXX	Seattle	I	50,000	30
XXXXXX	Tacoma	I	26,000	28
XXXXXX	Spokane	I	16,000	30
XXXXXX	Ellensburg	III	8,000	24
XXXXXX	Yakima	I	6,500	20

Gate-down Time (mins)	Freight Class	Unit	Previously Identified Crossing
240	T1	Y	Y
200	T4	Y	N
145	T3	N	Y
120	T2	Y	N
120	T5	Y	N

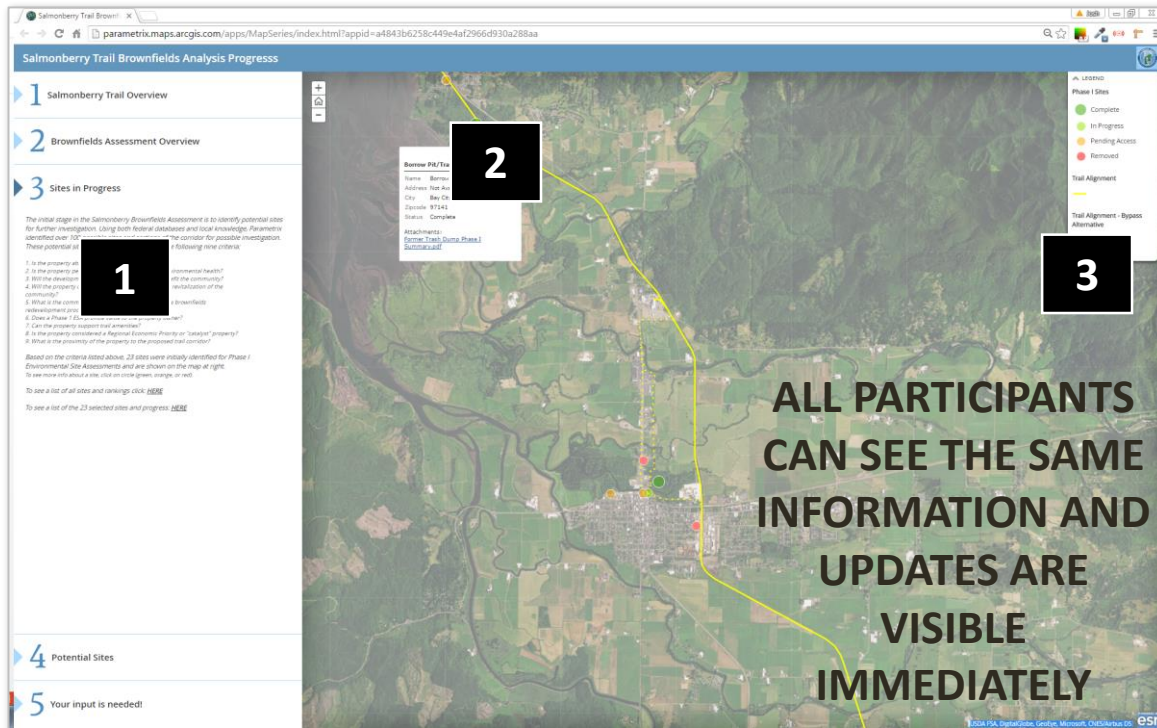
## DATABASE EXAMPLE

*Locational information (latitude/longitude) used to link to mapping software*



# MAPPING TOOL

The project will use one or more web maps to present spatial and tabular data for each rail crossing. Depending on the task, web maps will be used to tell a story, review information, or gather input.



## EXAMPLE USES

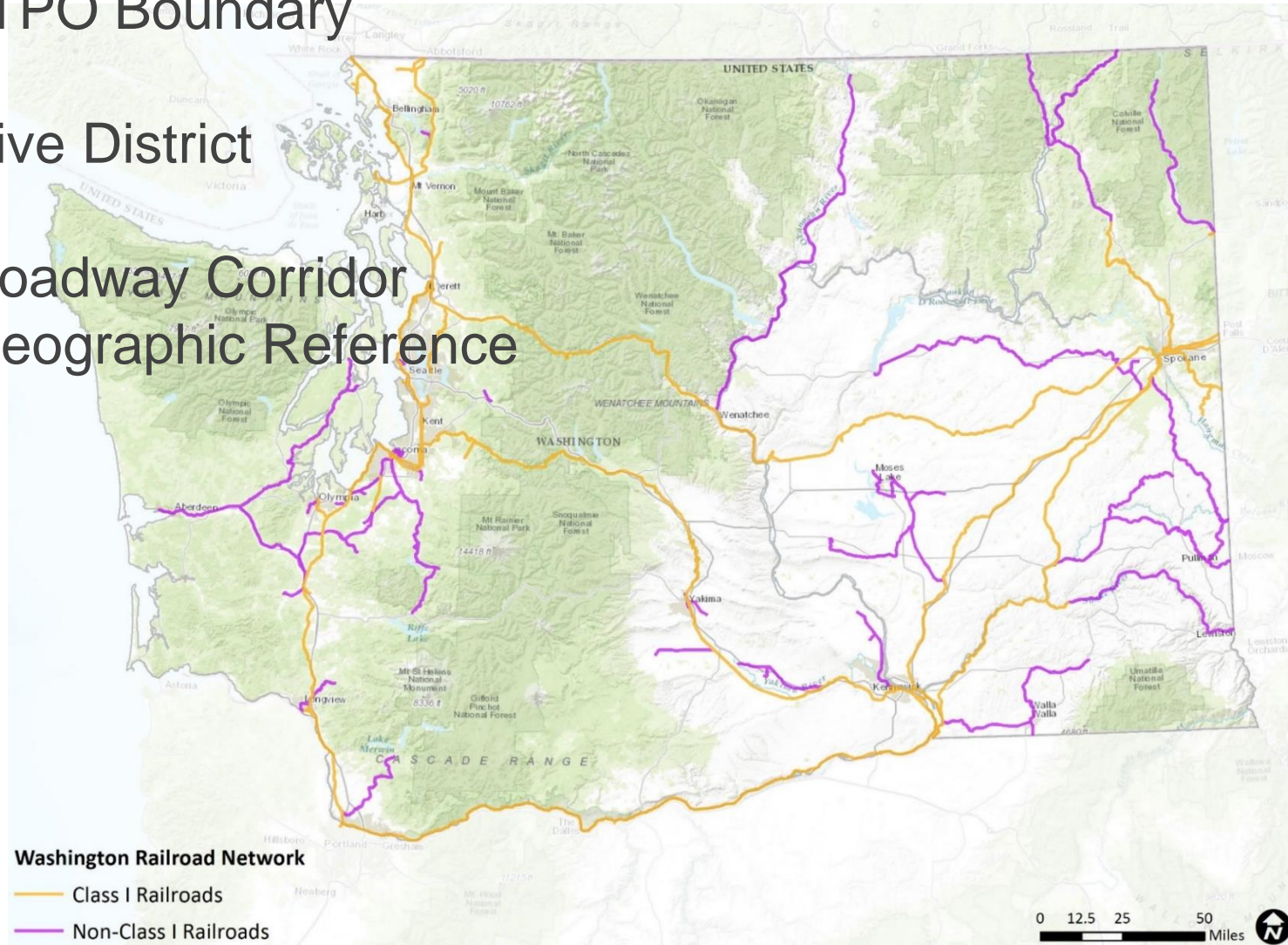
- 1** Use a narrative alongside the map to convey information to the team or the public.
- 2** Embed information for each location that can be viewed with a click or exported as a table.
- 3** Show criteria and prioritization visually in the same map or on several maps.



# HOW PRIORITIES MAY BE SUMMARIZED

## Example Geographic Boundaries:

- By MPO/RTPO Boundary
- By County
- By Legislative District
- By City
- By Major Roadway Corridor
- By Other Geographic Reference



# UPCOMING ADVISORY PANEL MEETINGS

**August 2<sup>nd</sup>** (10:00am to 4:00pm)

*Location: Seatac, The Conference Center at Sea-Tac Airport*

**September 28<sup>th</sup>** (10:00am to 4:00pm)

*Location: Seatac, Meeting Room TBD*

**November 2<sup>nd</sup>** (10:00am to 3:00pm)

*Location: Olympia, John A. Cherberg Building Room ABC*

# MORE INFO

<http://leg.wa.gov/JTC/Pages/Road-Rail-Study.aspx>

**Beth Redfield**

JTC Project Manager

360.786.7327

[beth.redfield@leg.wa.gov](mailto:beth.redfield@leg.wa.gov)

**Jon Pascal**, PE, PTOE

Consultant Project Manager

425.896.5219

[jon.pascal@transpogroup.com](mailto:jon.pascal@transpogroup.com)