

WSDOT Local Programs

Pedestrian and Bicycle Update



Roger Millar
Acting Secretary of Transportation

Keith Metcalf
Acting Deputy Secretary

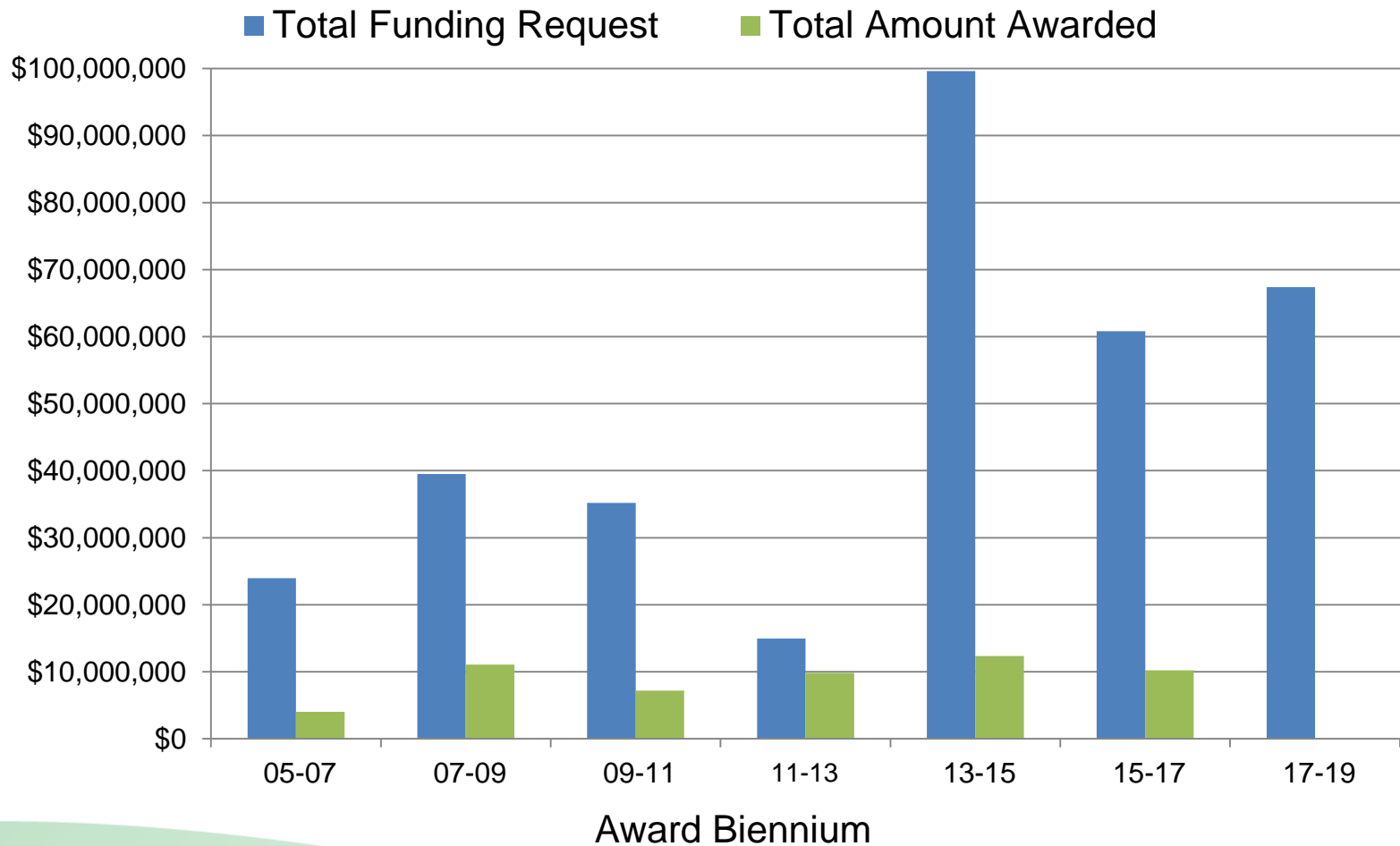
Kyle McKeon
Engineering Services Manager

WSDOT Pedestrian & Bicycle Program Purpose

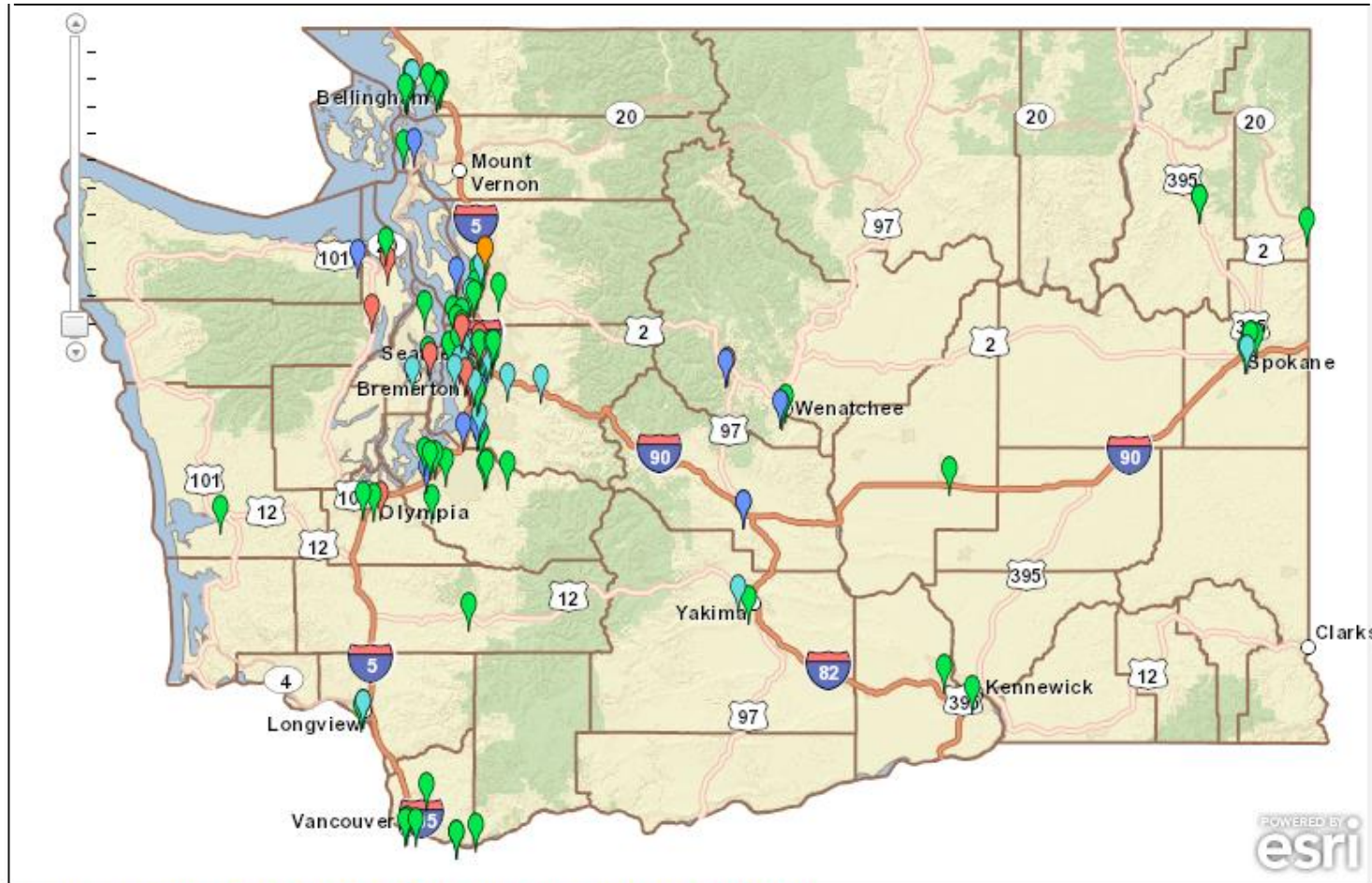
Reduce pedestrian and bicycle collisions and enhance mobility options for people who walk and bike for transportation.



WSDOT Pedestrian & Bicycle Program Funding Requested & Awarded

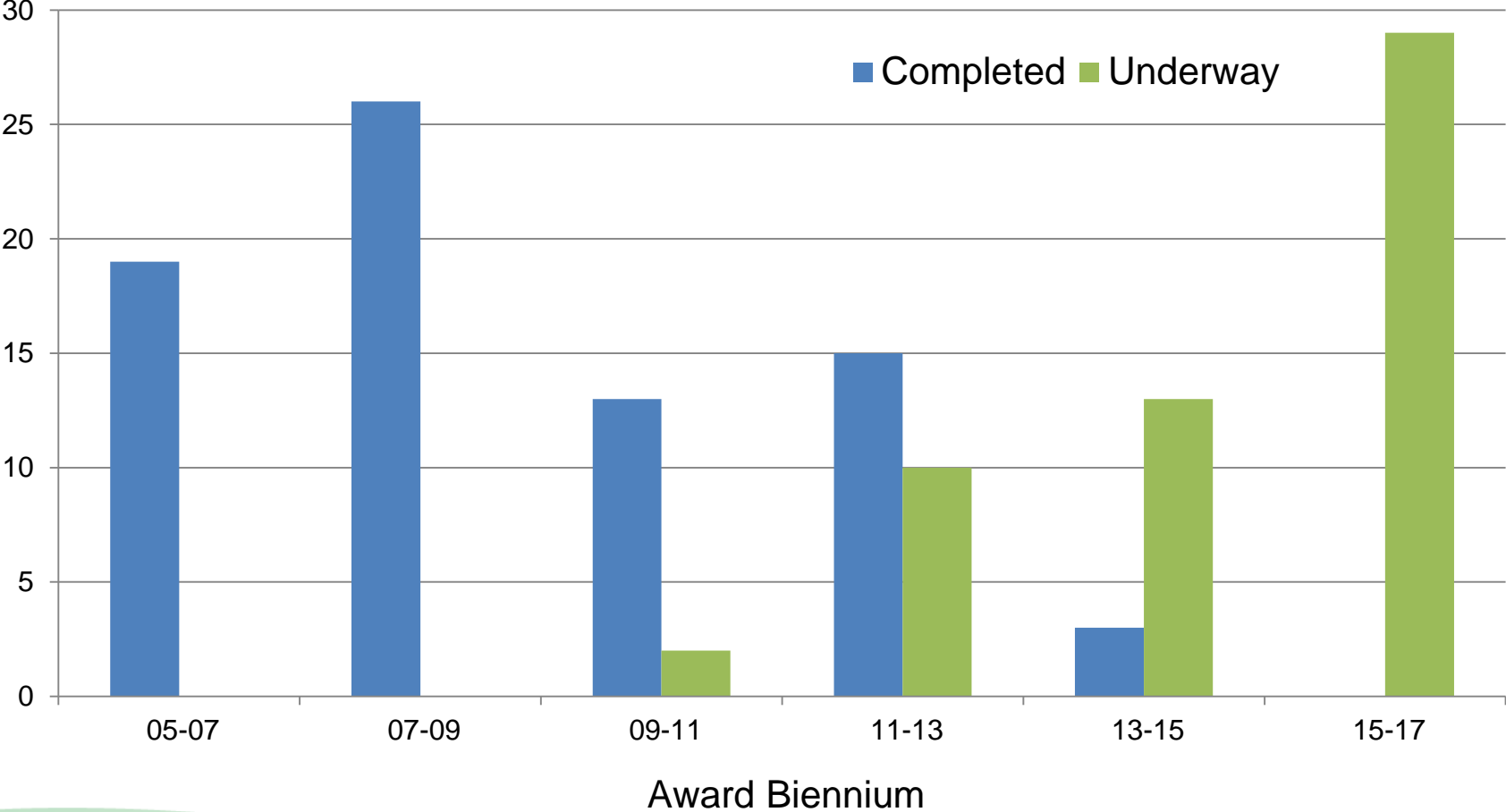


WSDOT Pedestrian & Bicycle Project Locations 2005 to 2015



LEGEND: Design Right of Way Construction Complete Delayed

WSDOT Pedestrian & Bicycle Program Project Status by Award Biennium

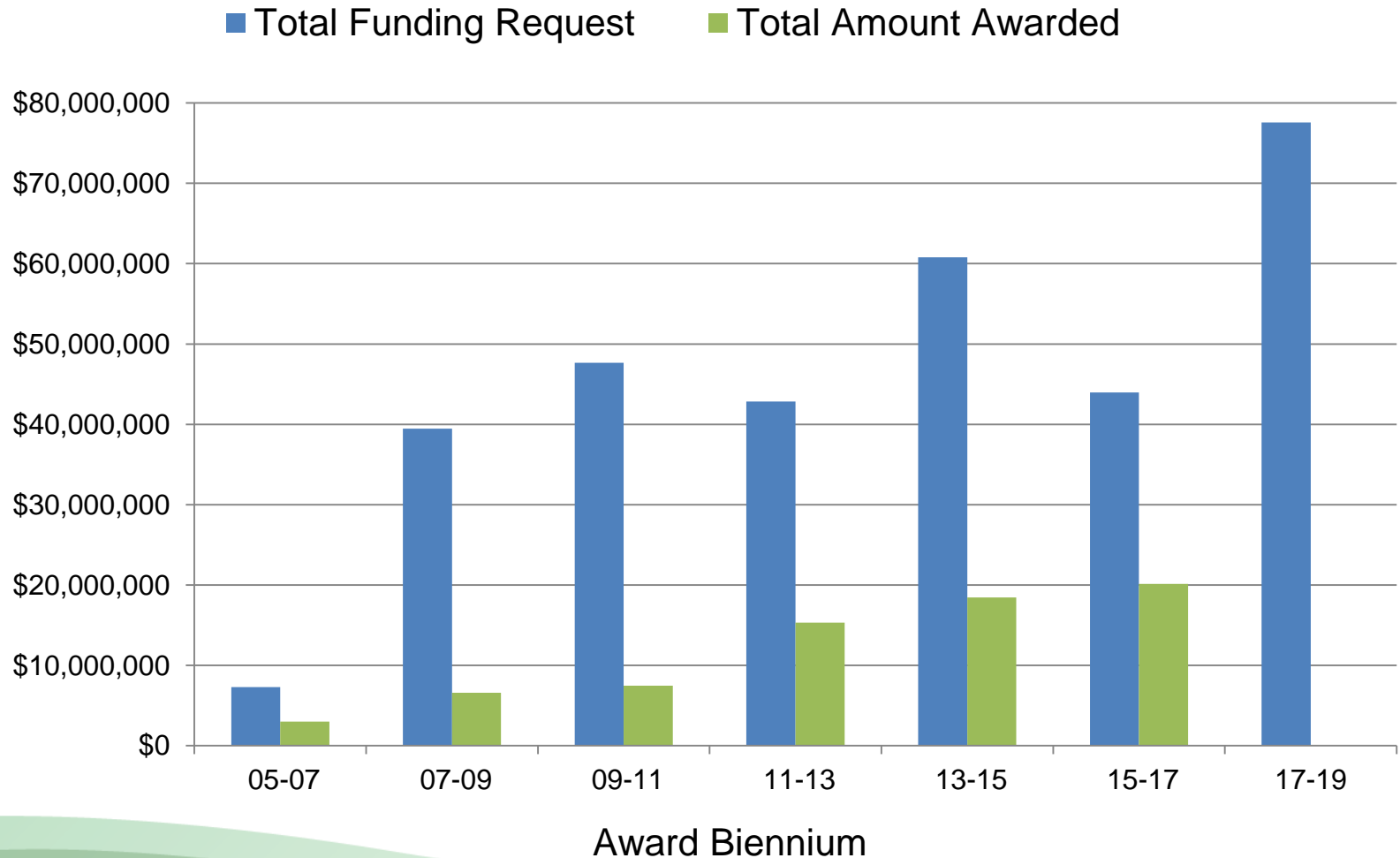


WSDOT Safe Routes to School Program Purpose

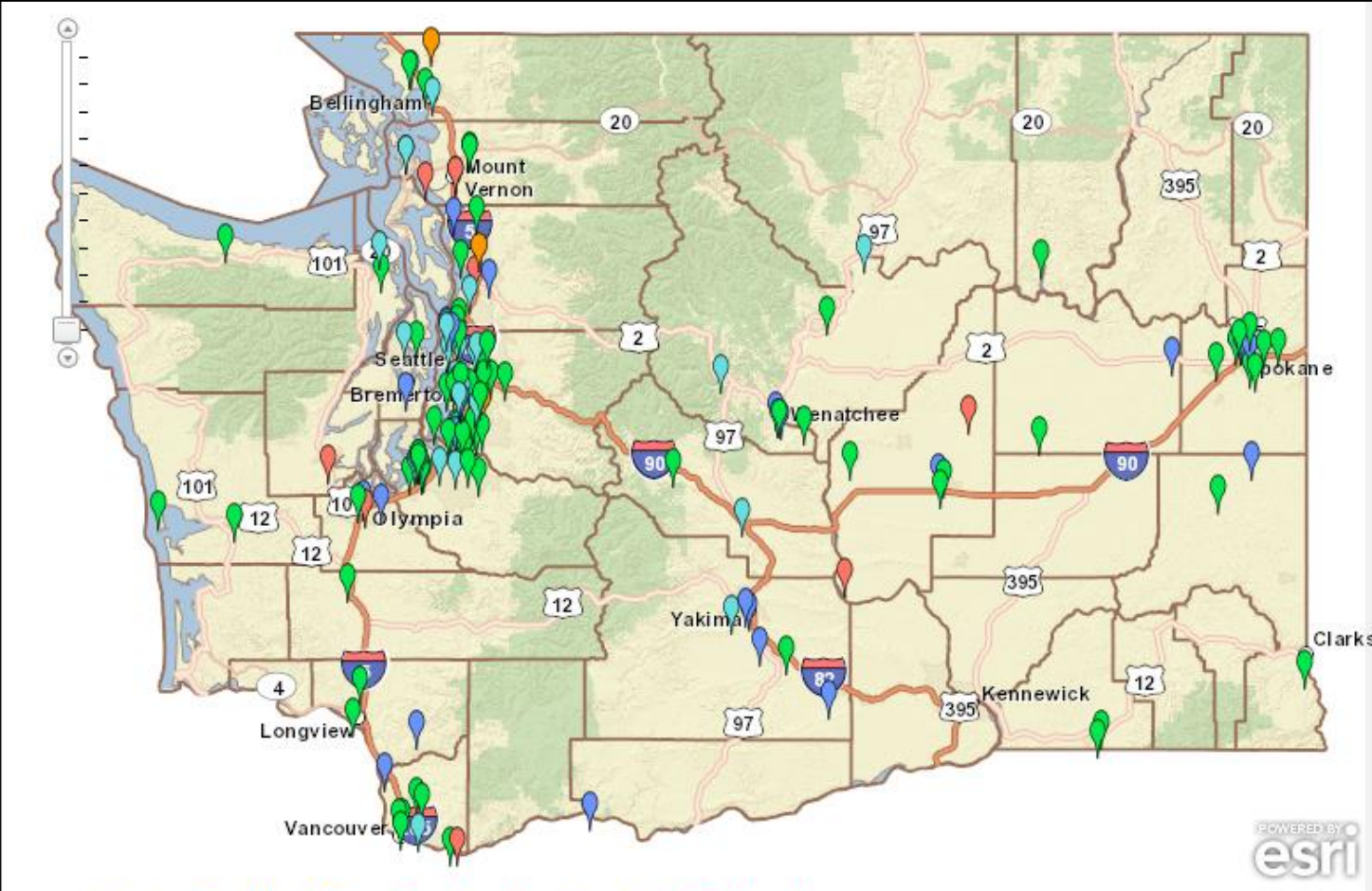
- Increase the number of children walking and biking to school safely.
- Funds bicycle and pedestrian improvements for children kindergarten to 12th grade.



WSDOT Safe Routes to School Funding Requested & Awarded



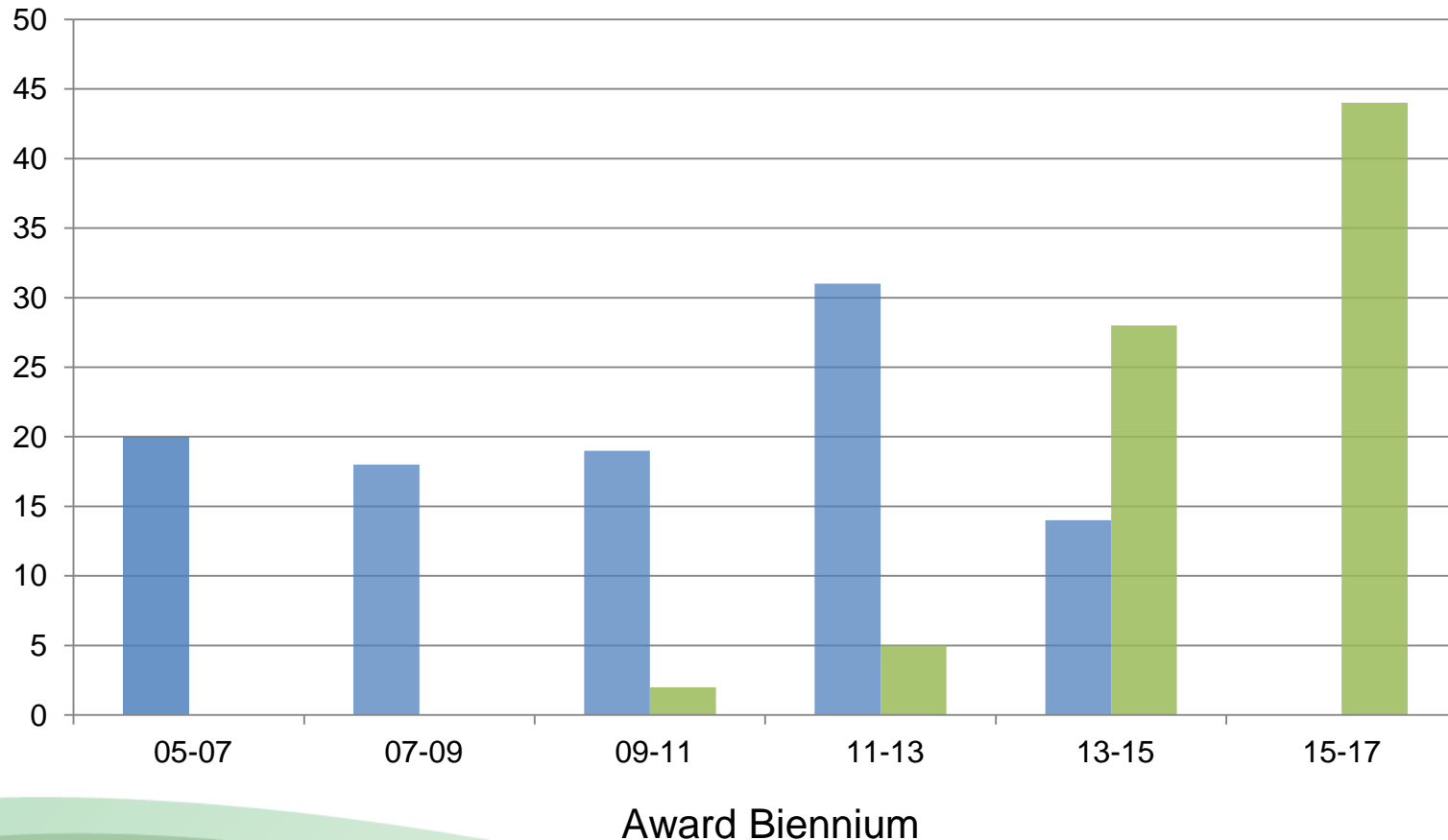
WSDOT Safe Routes to School Project Locations – 2005 to 2015



LEGEND: Design Right of Way Construction Complete Delayed

WSDOT Safe Routes to School Project Status

■ Completed ■ Underway



2017-2019 Biennium

- Consolidated application
- Current funding expectations:
 - Safe Routes to School
 - \$11,400,000 federal funds
 - \$7,750,000 state funds
 - Pedestrian and Bicycle Program
 - \$18,000,000 state funds



Technical Assistance/Outreach

- 50 outreach meetings with local agencies
 - Targeting agencies with higher rates of bike/pedestrian crashes
- Presentations
 - Four webinars (over 300 participants)
 - 28 conferences, workshops and trainings

Additional Outreach

- E-mailed Call for Projects to:
 - Cities
 - Counties
 - Tribes
 - Health departments
 - School districts
 - Non-profit organizations
 - Traffic safety professionals
 - MPO/RTPOs



Outcomes – 2005 to 2015

- \$93 million investment for 314 projects
 - 544,000 linear feet of sidewalks, bicycle lanes and multi-use trails;
 - 265 new crosswalk and intersection improvements; and
 - 20% increase in children walking and biking to school at project locations.

Safe Routes to School Safety Education Project

- Physical education class for bike and pedestrian safety education reaching:
 - 57 School Districts
 - 58,000 Children

“This curriculum has really inspired kids to get out on their bikes. They were leery at first to ride with helmets and didn't really know traffic safety rules but improved greatly with our practice here at school.” PE Teacher

Bicycle and Pedestrian Counts

- Annual manual counts
 - 50 Cities
 - 282 Locations
- Permanent counters
 - 16 in 2015/2016
 - 50 in 2016/2017
- Bicycle and Pedestrian Count Portal
 - <http://wsdot.wa.gov/data/tools/bikepedcounts>



Pedestrian & Bicycle Program - Results

Newport/WSDOT - SR2, 4th Street to 7th Street
Non-Motorized Improvements Project



Before



After

Safe Routes to School – Results

Sedro Woolley – SR9 Bicycle/Pedestrian Safety Improvements Project



Before



After

Safe Routes to School – Results

Seattle - Dearborn Park Elementary



Before



After

Safe Routes to School – Results

Bellevue – West Lake Sammamish



Before



After

Contact Information

Director, WSDOT Local Programs Division
Kathleen B. Davis
(360) 705-7871, davisk@wsdot.wa.gov

Engineering Services Manager
Kyle McKeon
(360) 705-7375, mckeonk@wsdot.wa.gov

Active Transportation Programs Manager
Charlotte Claybrooke
(360) 705-7302, claybrc@wsdot.wa.gov

Active Transportation Programs Specialist
Ed Spilker
(360) 705-7387, spilkee@wsdot.wa.gov

