

The background image shows a city street with railroad tracks in the foreground. The tracks run parallel to a road on the left. In the background, there are several multi-story buildings, some with brick facades and others with more modern architectural styles. The scene is captured during the day, with some trees showing autumn foliage. A semi-transparent teal overlay covers the right side of the image, containing the title and other text.

# ROAD-RAIL CONFLICTS PRIORITIZATION STUDY

Joint Transportation Committee Update

Beth Redfield and Mary Fleckenstein, JTC Staff

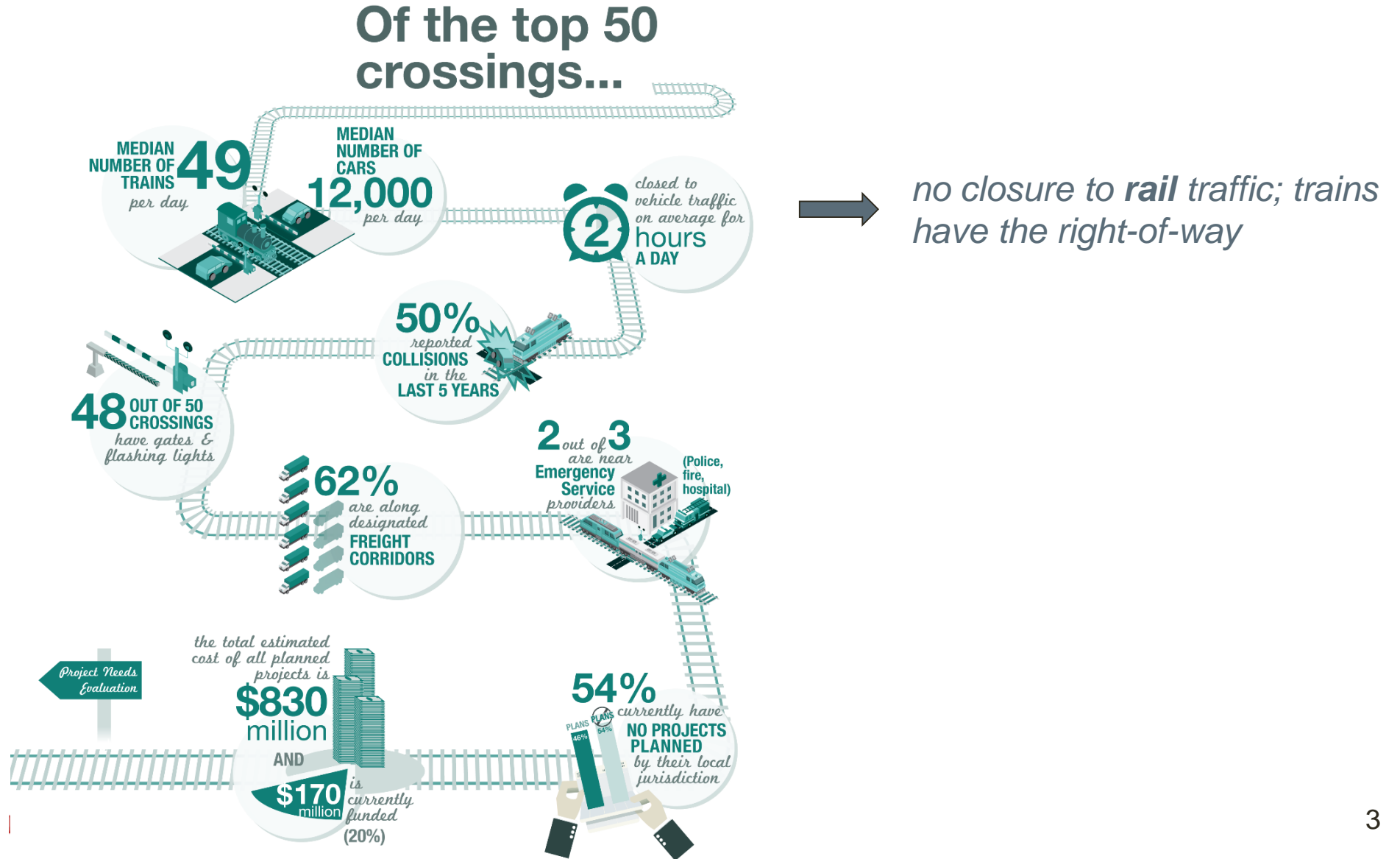
November 10, 2016

# ROAD-RAIL CONFLICT PRIORITIZATION STUDY

2ESHB 1299 (2015), section 204:

(3) \$250,000 of the motor vehicle account—state appropriation, from the cities' statewide fuel tax distributions under RCW 46.68.110(2), is for a study to be conducted in 2016 to identify prominent road-rail conflicts, recommend a corridor-based prioritization process for addressing the impacts of projected increases in rail traffic, and identify areas of state public policy interest, such as the critical role of freight movement to the Washington economy and the state's competitiveness in world trade. The study must consider the results of the updated marine cargo forecast due to be delivered to the joint transportation committee on December 1, 2015. In conducting the study, the joint transportation committee must consult with the department of transportation, the freight mobility strategic investment board, the utilities and transportation commission, local governments, and other relevant stakeholders. The joint transportation committee must issue a report of its recommendations and findings by January 9, 2017. (Due date amended by ESHB 2524, 2017 Supplemental Transportation Budget.)

# KEY FACTS FROM THE PRIORITIZATION RESULTS



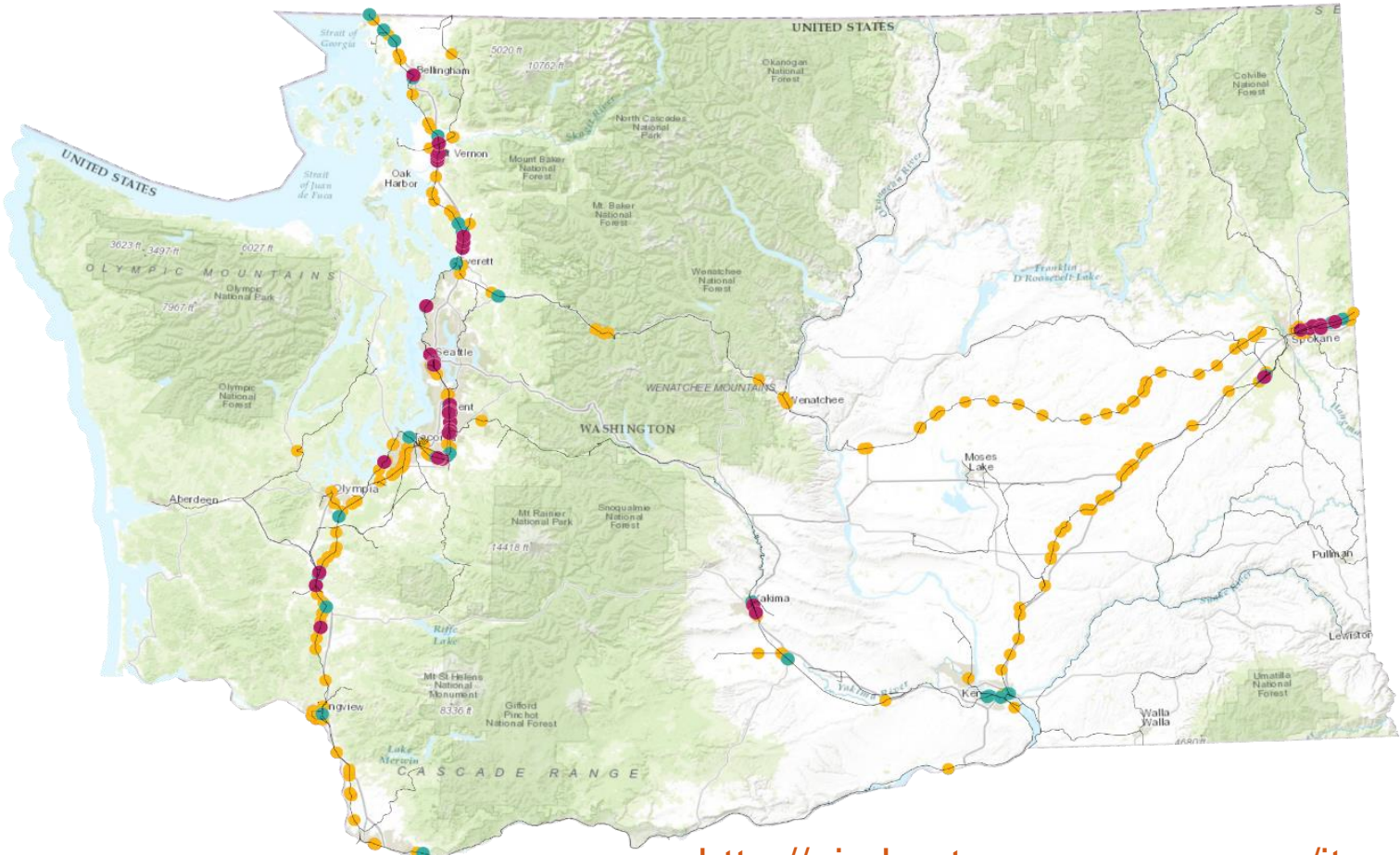
# CROSSINGS SUMMARIZED BY PRIORITY GROUP

RANKINGS:

1-50

51-100

101-302



<http://gisdev.transpogroup.com/jtccrossingstudy/>

## NEXT STEPS

- **Draft Report to Advisory Panel and Staff Work Group**  
**November 28<sup>th</sup>**
- **Joint Transportation Committee Meeting**  
**December 15<sup>th</sup> (10:00am to 3:00pm)**  
*Location: Olympia, John A. Cherberg Building, Hearing Room 1*  
TOPIC: Present Study Findings and Recommendations