

Winter in Southwest Washington and impact to State's road system

Kris Strickler, Regional Administrator
Joint Transportation Committee meeting
June 21, 2017

Roger Millar, Secretary of Transportation

Keith Metcalf, Deputy Secretary of Transportation

Cold & wet winter hits hard

SR 14 in the Columbia
River Gorge – Jan. 18

- **Nov. 2016 – April 2017: 16th coldest in 75 years**
- **Oct. 2016 – April 2017: 4th wettest in 75 years**
 - **Record rainfall totals: Oct – Nov, Feb.**
- **Vancouver public schools used 8 snow days, the most in at least 22 years**

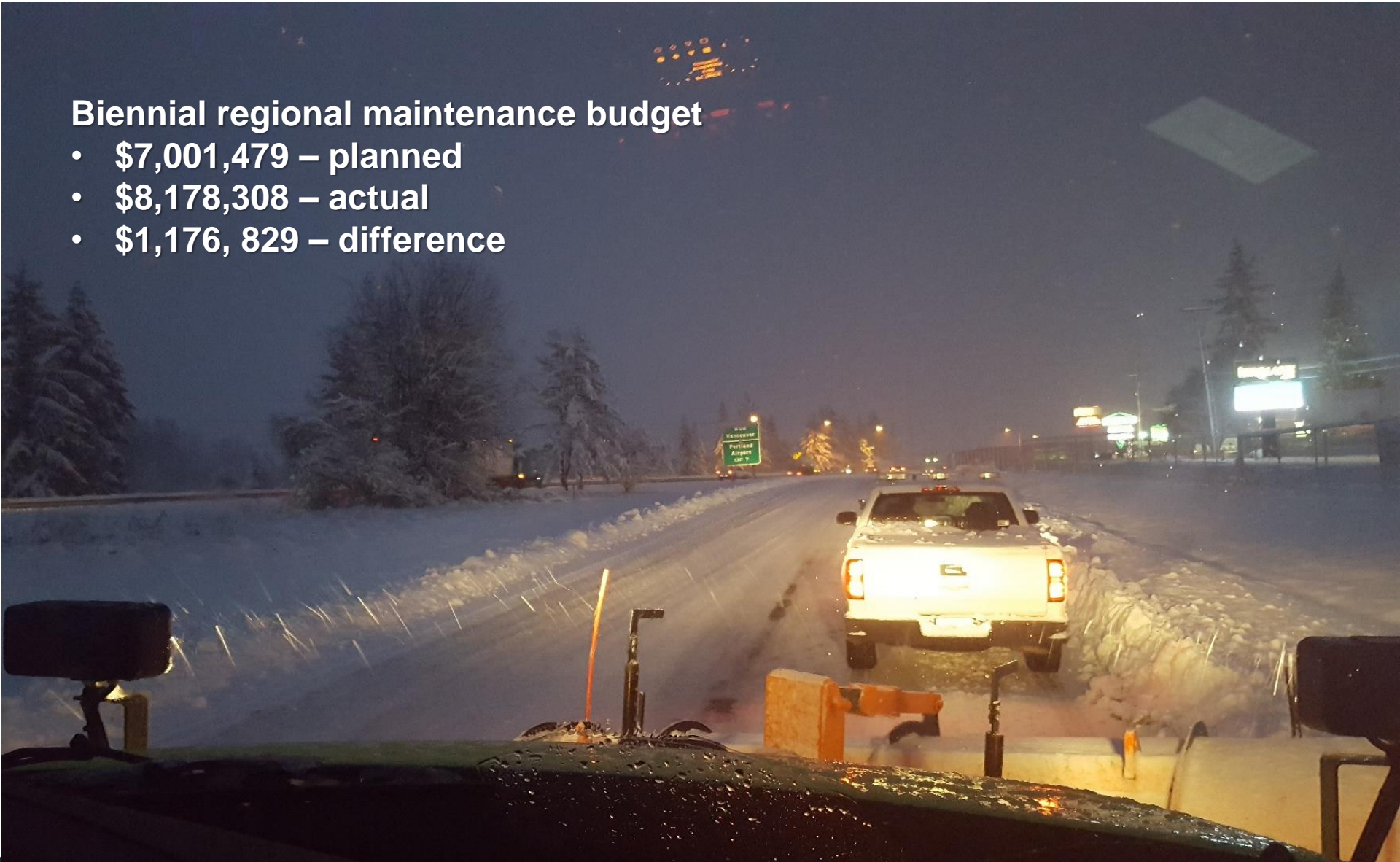
Winter maintenance costs

- **Regional labor (Nov. – March)**
 - Planned - 37,005 hours
 - Actual – 44,219 hours
 - Difference – 7,214 (17% over)
- **Labor, equipment, materials (Nov. – March)**
 - Planned – \$2,877,941
 - Actual – \$4,288,835
 - Difference – \$1,410,894 (33% over)

Maintenance biannual funding

Biennial regional maintenance budget

- \$7,001,479 – planned
- \$8,178,308 – actual
- \$1,176, 829 – difference



Winter emergencies



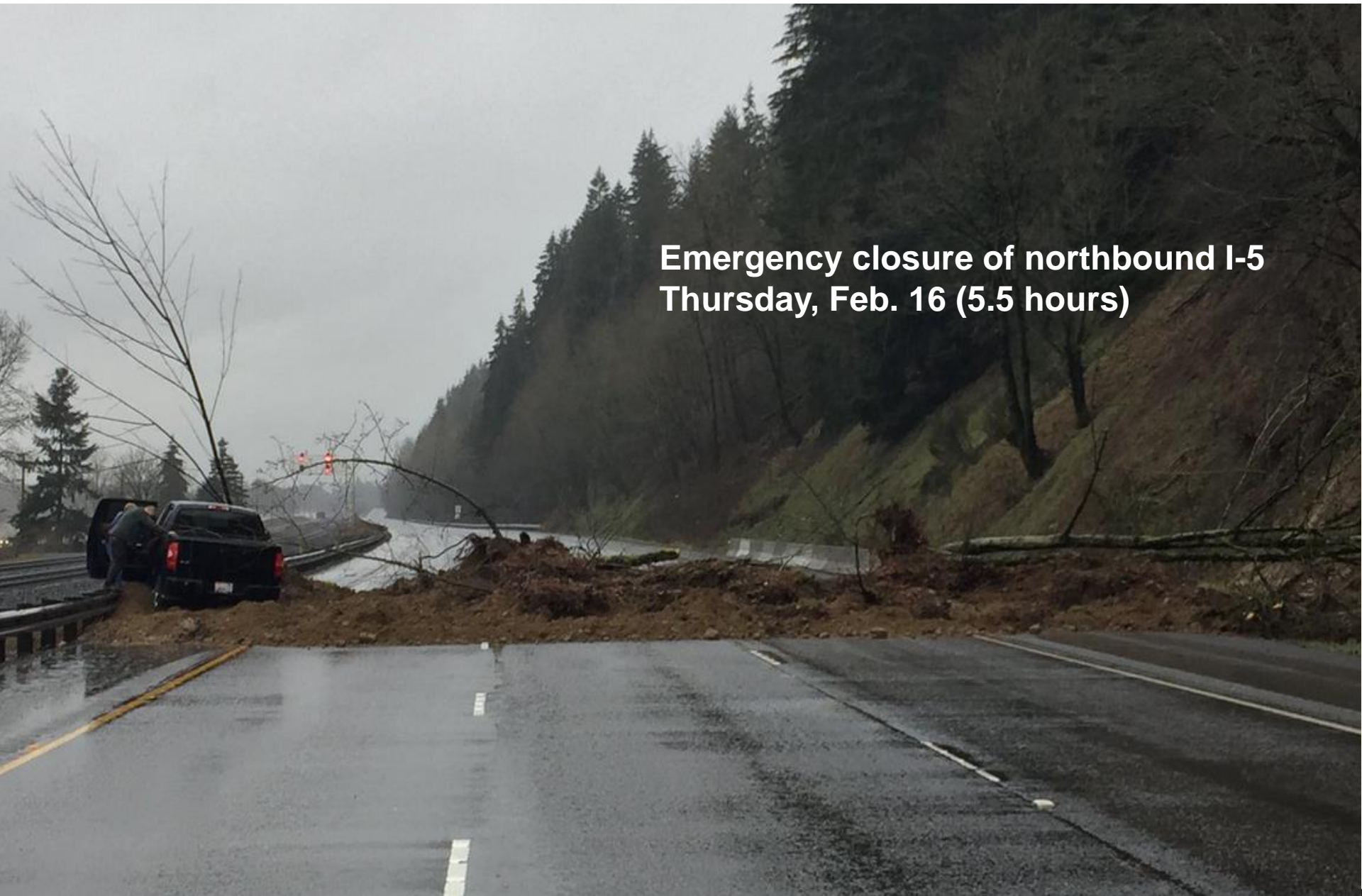
SR 4 near Skamokawa



SR 7 between Morton and Elbe

Northbound I-5 slide near Woodland

Emergency closure of northbound I-5
Thursday, Feb. 16 (5.5 hours)



Pavement damage Southbound I-5 near Woodland



Maintenance repairs Friday, Feb. 17

Pavement damage and repair



SR 14 near White Salmon

US 12 east of Packwood



Maintenance repairs



SR 14 Stevenson

Contractor repairs



SR 14 near Maryhill

SR 503 near Speelyai Bay/Cougar



March 13

SR 503 – rock fall concern



SR 503 slope stabilization



Maintenance continues cleanup



Maintenance continues, thanks to Legislative support

- Spot pavement repair
- Guardrail repair
- Lighting repair
- Additional storm debris removal

SSB 5806

I-5 Bridge inventory report



Previous work

- Approved environmental process (28 tech reports, 1,600 DEIS comments)
- NEPA Record of Decision
- General Bridge Permit from the US Coast Guard

Public Involvement

- Participation in 1,200 events
- 33,000 face-to-face contacts
- 12,000 public comments

Regional Transportation Council data



Photo credit: The Columbian

I-5 Bridge Volumes

2011 - 128,115

vs.

2016 - 135,496

ODOT

6%

I-5 Bridge Peak Hours

2011 - 5 hrs.

vs.

2016 - 7 hrs.

Average Speed <30 mph

40%

Morning Travel Time

Main St. to Jantzen Beach

2011 - 6m 25s

vs.

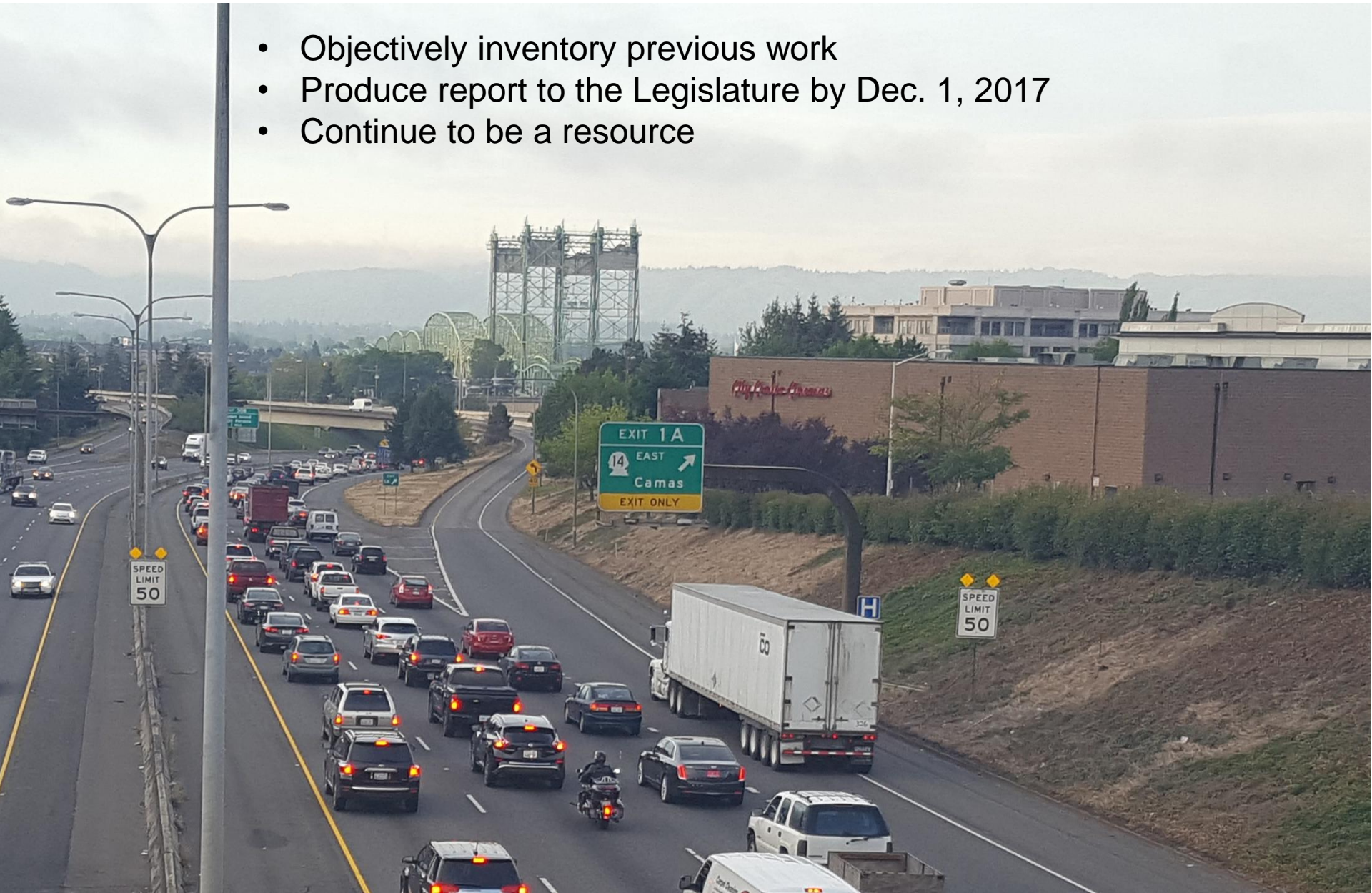
2016 - 24m 15s

Probe Vehicle

278%

Our commitment

- Objectively inventory previous work
- Produce report to the Legislature by Dec. 1, 2017
- Continue to be a resource



Questions?

Kris Strickler

Southwest Regional Administrator

360-905-2001

StricklerK@wsdot.wa.gov