

# County Transportation Studies

Joint Transportation Committee  
September 14, 2017

Gary Rowe  
WSACE Managing Director  
(360) 770-7766  
growe@wsac.org



# Objectives

- County road data / metrics
- Streamline reporting requirements
- Provide / support road management tools
- Work with state agencies and counties



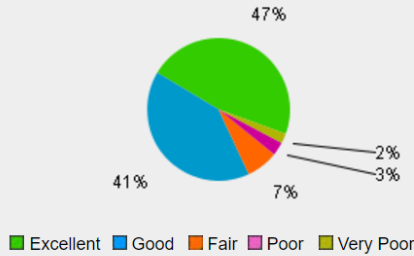
# County Road Data/Metrics

- Transportation metrics
  - Partnered with the County Road Administration Board
  - Tied to six transportation system policy goals outlined in RCW 47.04.280 (Economic vitality; Preservation; Safety; Mobility; Environment; Stewardship)
  - Initially developed in 2013, updated annually



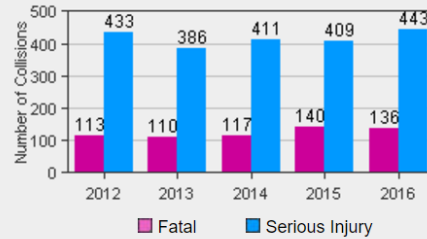
**Preservation**

2016 County Owned Arterial Surface Condition



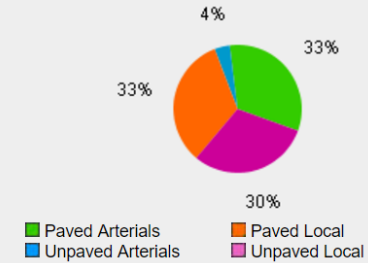
**Safety**

Number of Fatal and Serious Injury Collisions on County Owned Roads



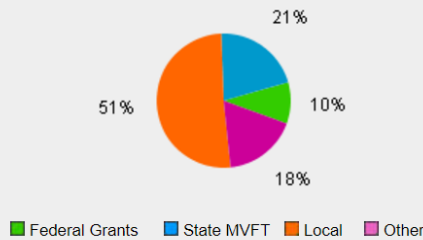
**Mobility**

2016 County Owned Road Network Total Miles: 39,180



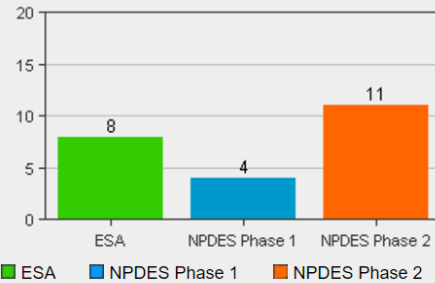
**Stewardship**

2015 County Road Total Revenue: \$911,589,992



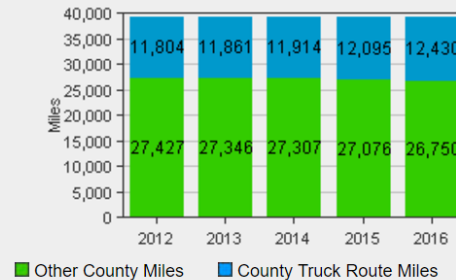
**Environmental**

2016 County Environmental Permit Status



**Economic Vitality**

County Owned Truck Route Mileage



[Datasources](#)

[Feedback](#)



# Streamline reporting

- Financial reporting
  - State Auditor
  - Department of Transportation
  - County Road Administration Board
  - Inconsistent data
- State Auditor financial reporting pilot project
  - SAO took lead on project to reprogram online reporting by cities and counties
  - Financial data provided to SAO and WSDOT already
  - SAO provides data to WSDOT and CRAB
  - 2/3 of cities and counties have voluntarily reported in pilot project for 2016



# Project Management Tools

- Focus on capital program development tools
- 2/3 of counties use common financial system developed by Cascade Software Systems
- Developed capital project planning module for financial system
  - Supports development of six-year (and longer) capital plans
  - Supports long-term financial planning based on available and potential revenue sources
  - Provides tools to integrate with state agency capital planning requirements
- Module is available to all counties



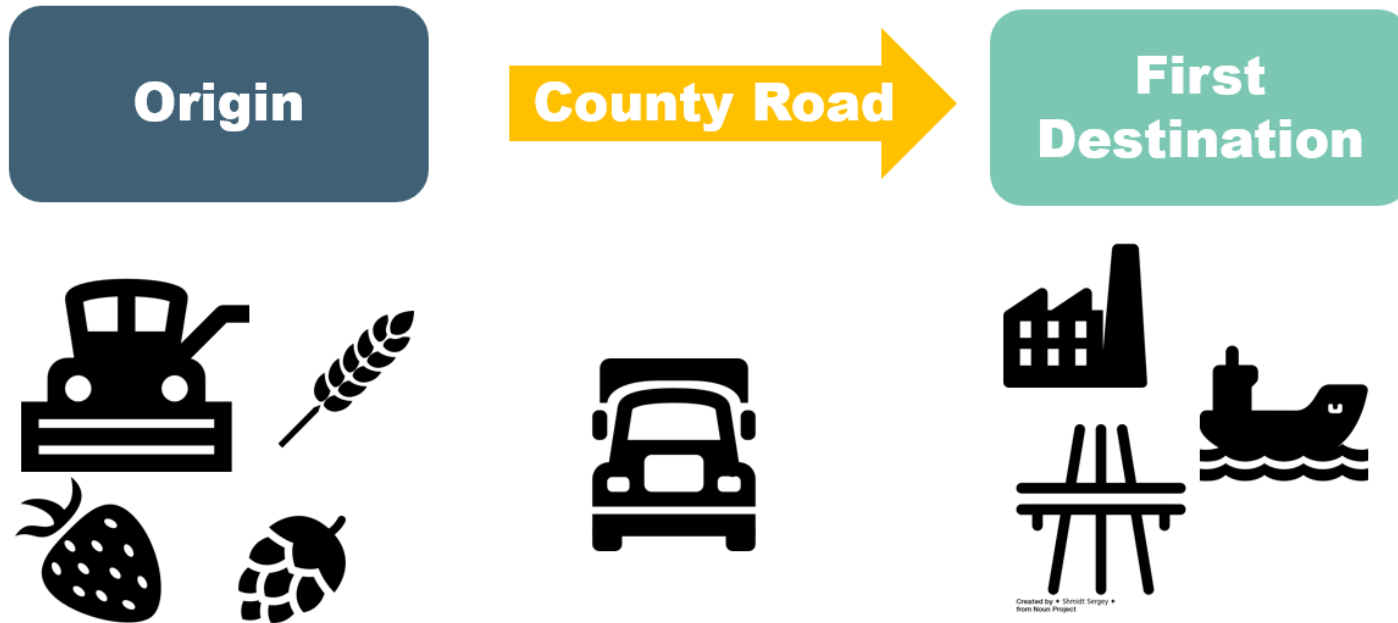
# County Freight Metrics

- **County roads important for economic vitality**
  - Poorly maintained roads and bridge closures or weight restrictions have an impact on freight mobility.
  - Efficiency and reliability are critical to time sensitive industries and deliveries; one missed or late delivery and business can be lost forever.
- **WSDOT first/last mile connectors**
  - To and from state freight hubs (processing/distribution centers, etc.) located within 5 miles of T1 and T2 highways
  - Carry 1 million tons during 3 months of the year of agricultural, timber, or other resource industry goods



# County Freight Metrics

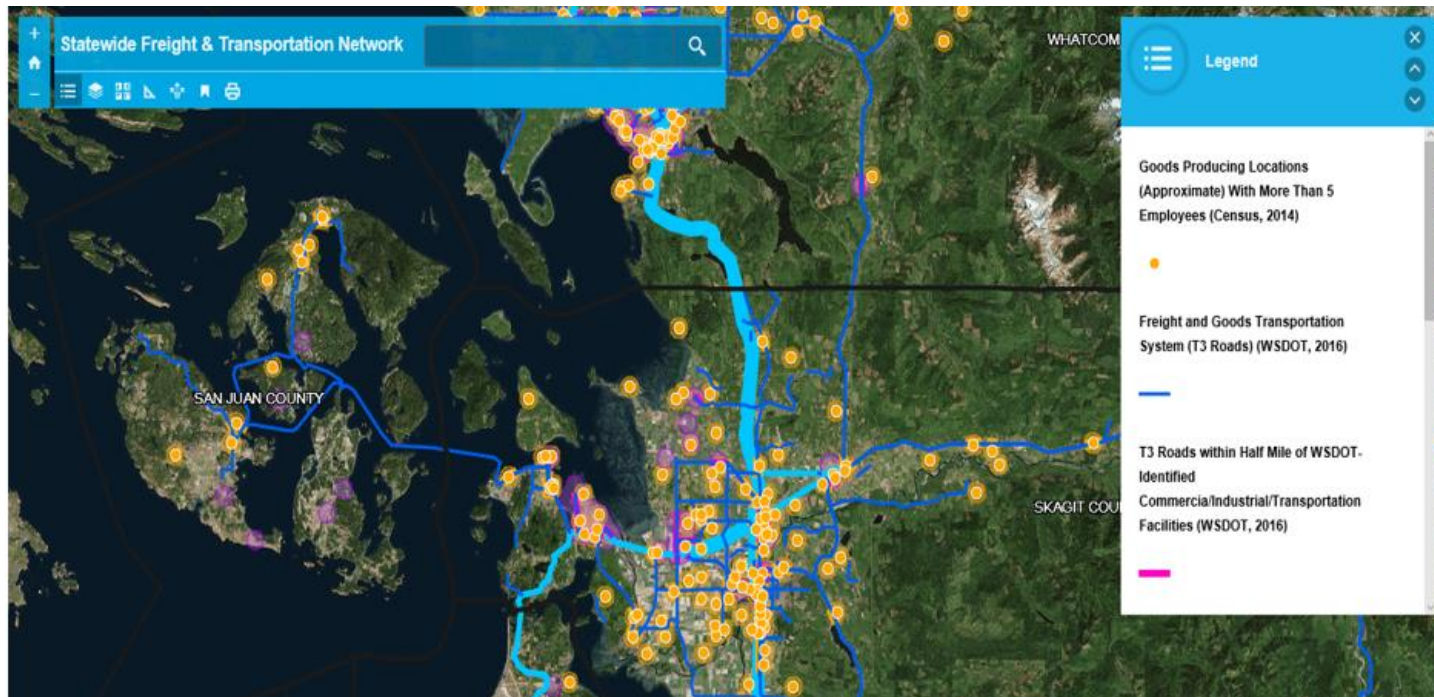
- The “VERY first mile” often happens on a County Road





# County Freight Metrics

- Identified potential “very first mile” routes



# Fish Passage Barriers

- Fish Barrier Removal Board
  - \$300k provided out of city/county study funds to the FBRB for predesign and scoping on fish barrier projects
- Voluntary programmatic agreements
  - Project funded but was not pursued
  - Lack of policy framework
  - Lack of support



# Fish Passage Barriers

- Fish passage barriers as mitigation (ESHB 2524)
  - ESSB 5996 (RCW 77.95.185) provides a preference for fish barrier removals as compensatory mitigation on transportation projects
  - Current state and federal policy considers off-site and out-of-kind as the least preferred
  - Federal policy prefers credits from mitigation banks or in-lieu fee programs
  - Policy framework lacks methodologies for in-stream mitigation debits/credits
  - Pilot project to develop in-lieu fee program will require funding and years to complete



# Federal Innovation Grant

- Bridge bundling project
  - Encouraged by federal FAST Act
  - Already utilized in several states
- Evaluate and recommend options
  - Identify multiple bridge projects under one procurement
  - Look at statewide or regions
  - Look at alternative procurement options
  - Look at engineering and permitting efficiencies
- Funding needed to implement pilot project



# Current Biennium Projects

- On-line financial reporting
  - coordination with SAO, WSDOT, CRAB
- County culvert inventory (implementation)
  - Culvert condition assessment tool
  - Conversion and transfer of existing data to CRAB
  - Training and technical support to counties
  - Estimates range from 250-500k culverts under county roads
  - Inventory data collection will be implemented over several years
- Enhanced road safety data
  - Systemic safety tool implementation
  - Options to provide additional data and support



# QUESTIONS?

Gary Rowe  
WSACE Managing Director  
(360) 770-7766  
growe@wsac.org  
www.wsac.org

