

Puget Sound Gateway Program

SR 167 and SR 509 Completion Projects

Joint Transportation Committee
October 10, 2017

CRAIG J. STONE, PE

GATEWAY PROGRAM ADMINISTRATOR

Puget Sound Gateway Program - SR 167 & SR 509

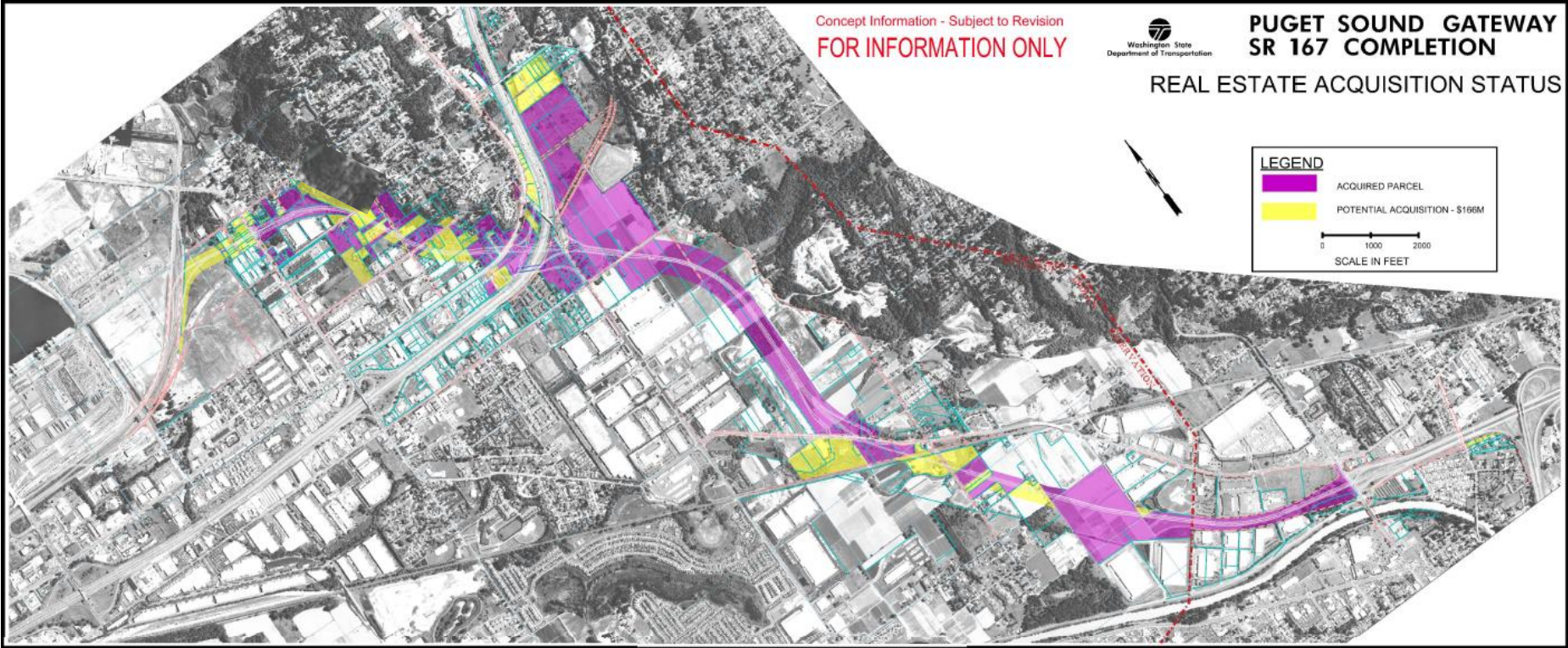


- Total funding of \$1.9 billion; including \$310 million from tolls and local contributions
- Provides direct freight links from the state's largest ports to key distribution centers in the region, to Eastern Washington, and to northern tier states
- Connects to Sea-Tac International Airport for a new south access expressway for both passenger and air cargo
- Supports community and economic development consistent with the regional 2040 transportation, land use and economic plans
- Working directly with an Executive Committee of elected officials and executives representing 25 cities, counties, ports, transit and federal agencies in King and Pierce counties, and a Steering Committee that brings in chambers and trucking interests

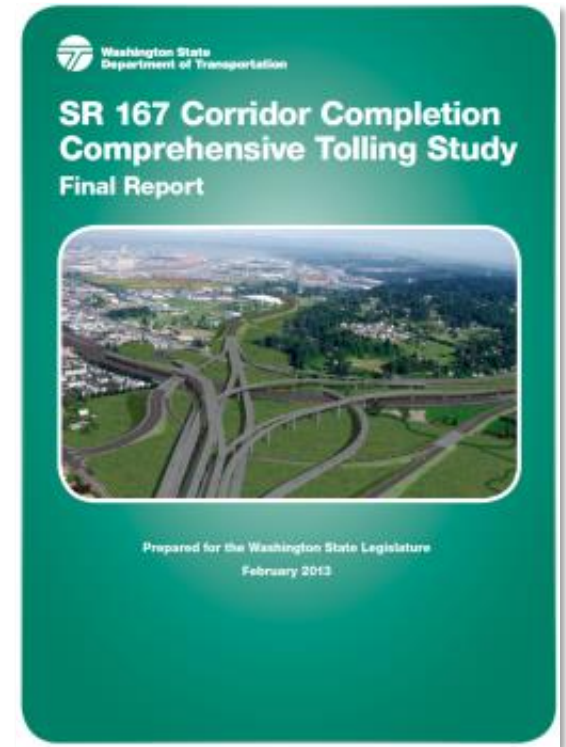
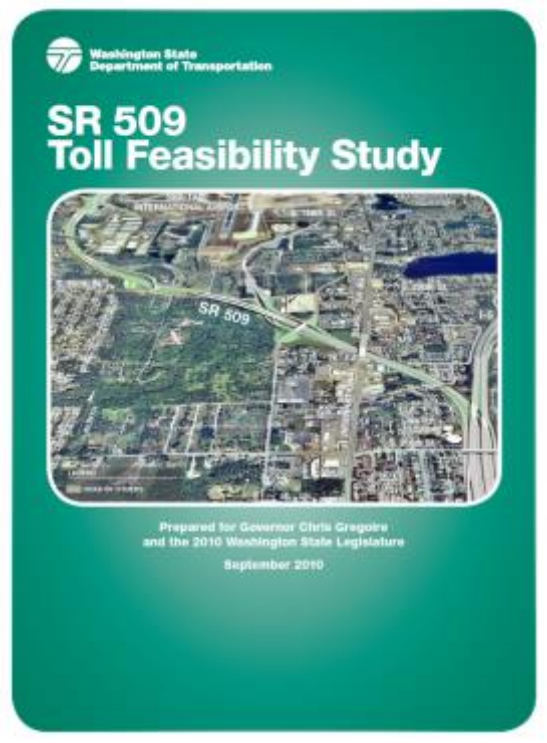
SR 167 Full Build Out 2006 EIS with truck weigh stations



SR 167 Right of Way

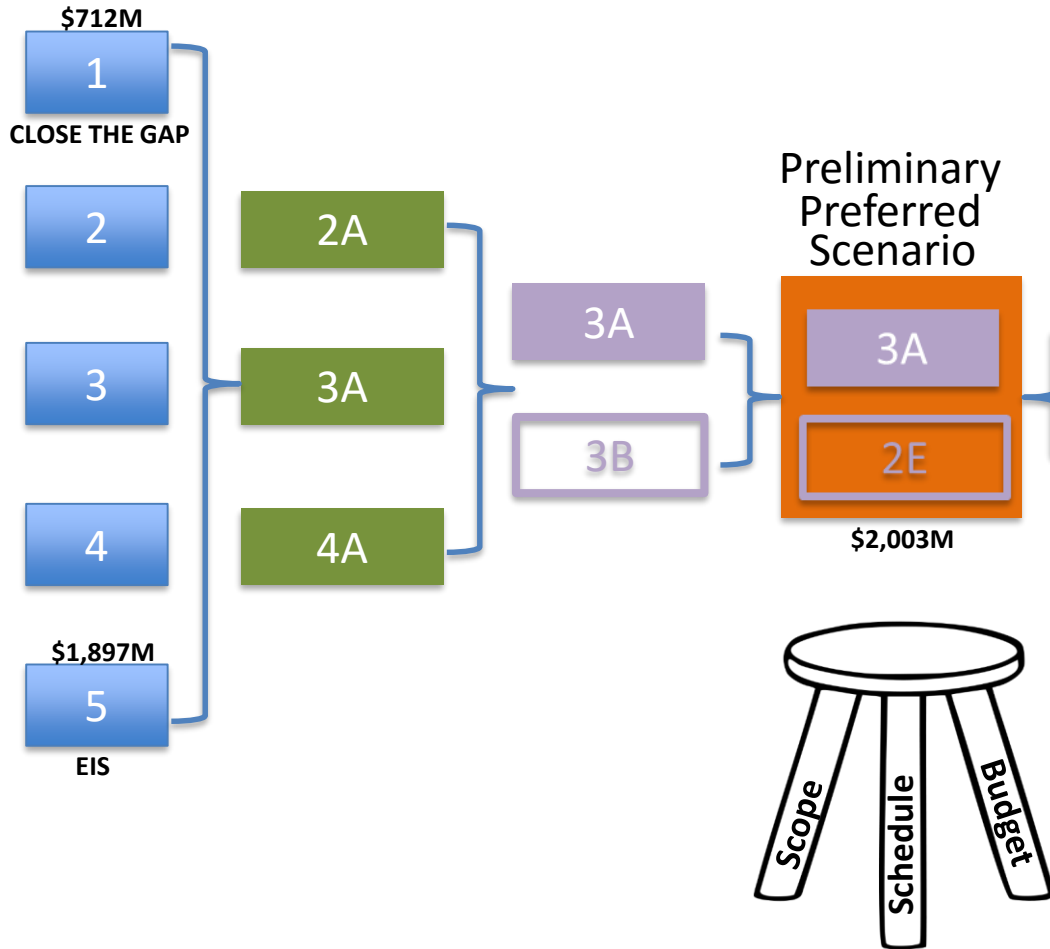


Reports to the Legislature

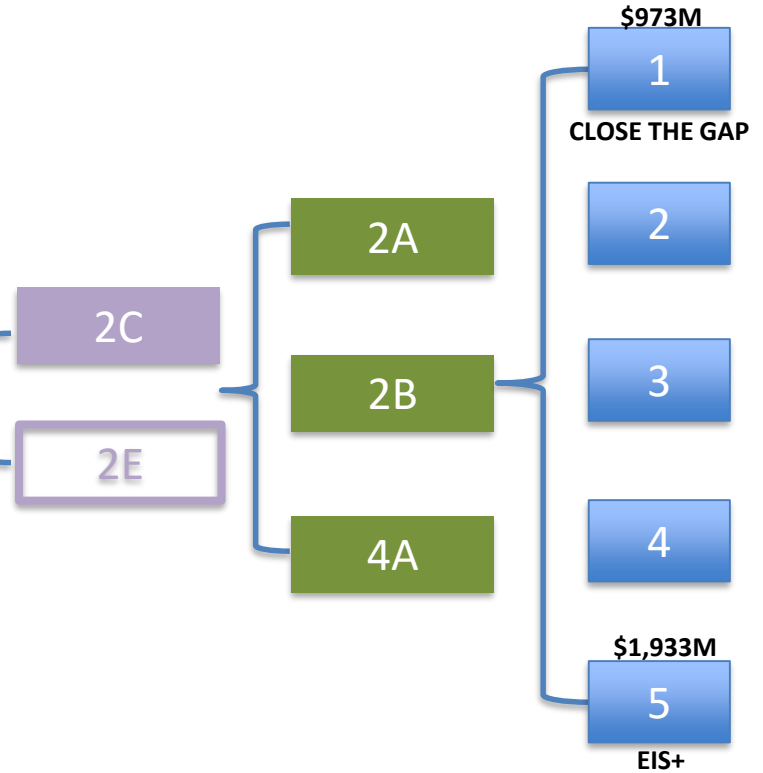


Practical Design Scenario Refinement Process

SR 509 Process



SR 167 Process



SR 167

Preliminary Preferred Scenario - 2E



SR 509

Preliminary Preferred Scenario - 3A

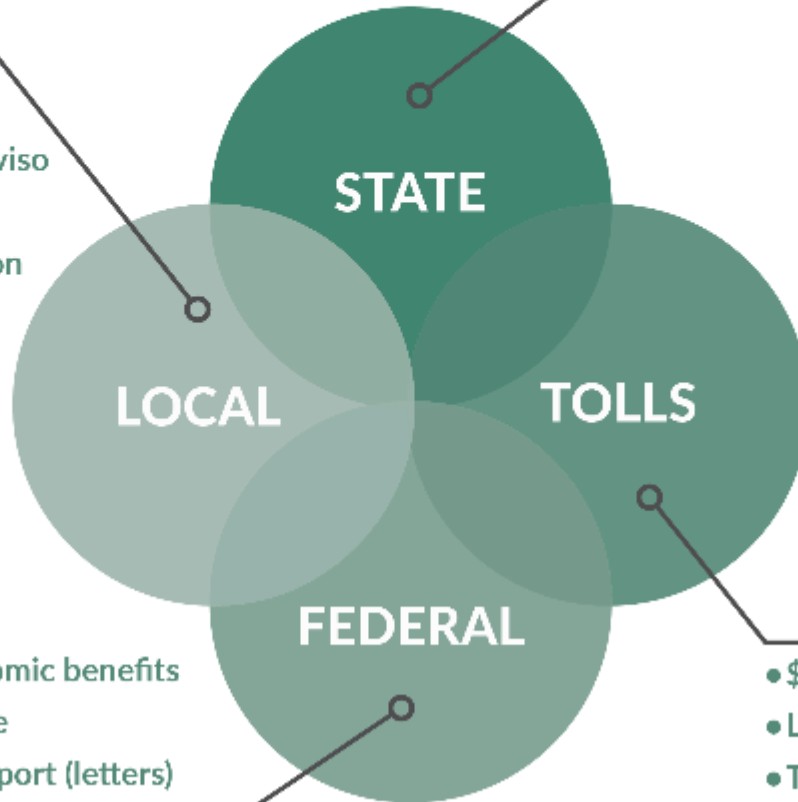


GATEWAY FUNDING SPHERES

Getting to the preferred scenario 3A/2E

- \$130 M local contribution
- Legislative intent
- July 2018 MOU – Leg. Proviso
- Facilitation consultant
- Economic and transportation benefit

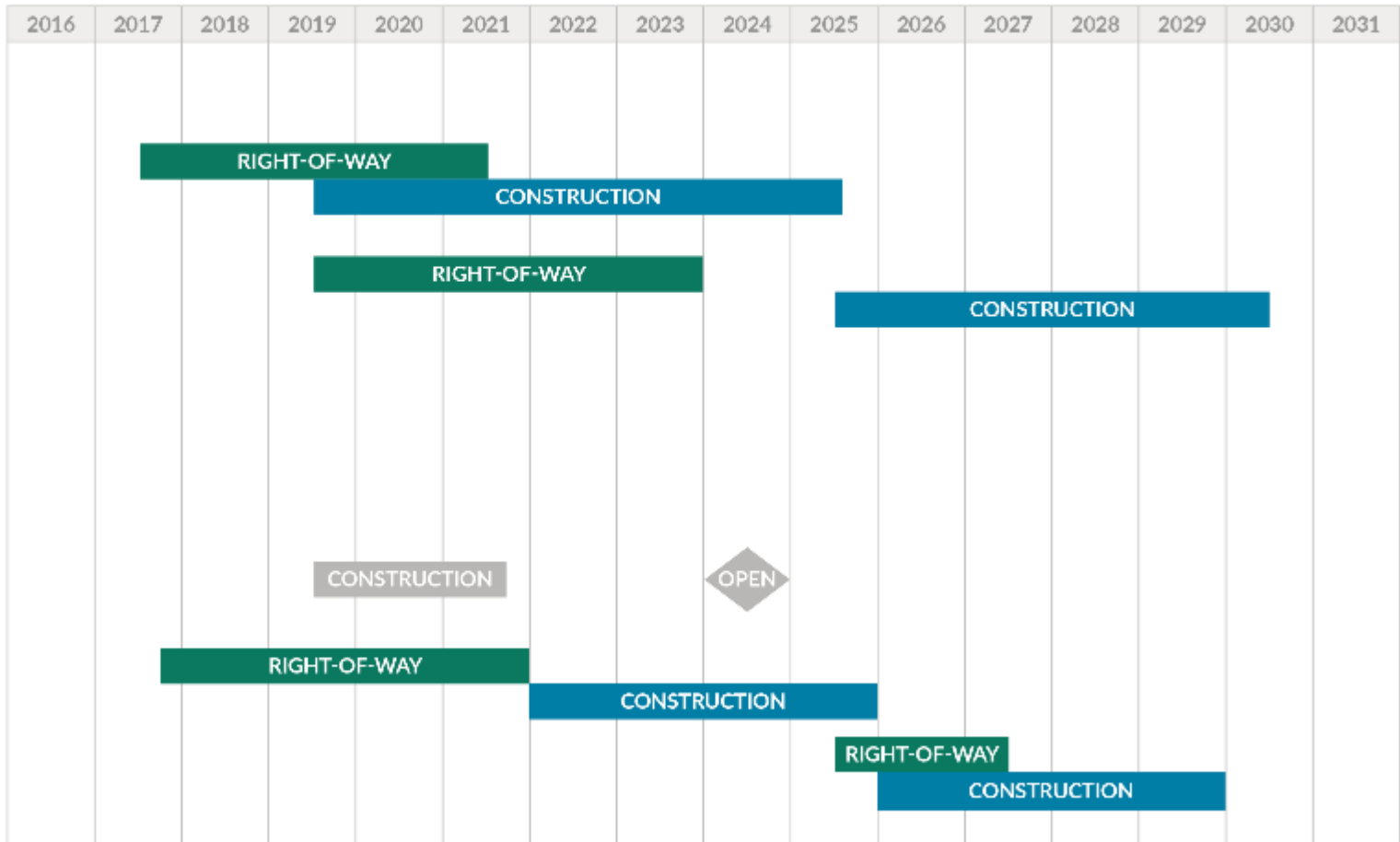
- \$114 M INFRA Grant
- Regional and national economic benefits
- 3P pursuit to be competitive
- Congressional and local support (letters)
- Possible added local ask – Leg. Proviso



- \$1,565 M Connecting Washington funds
- Evaluate benefits of advancing the schedule – Leg. Proviso
- WSDOT acceleration ad-hoc committee

- \$180 M toll revenue
- Legislative intent
- Traffic and Revenue consultant
- Coordination with WSTC and OST

Program Schedule



More information:

Craig J. Stone, PE

Puget Sound Gateway Program Administrator

(206) 464-1222

stonec@wsdot.wa.gov