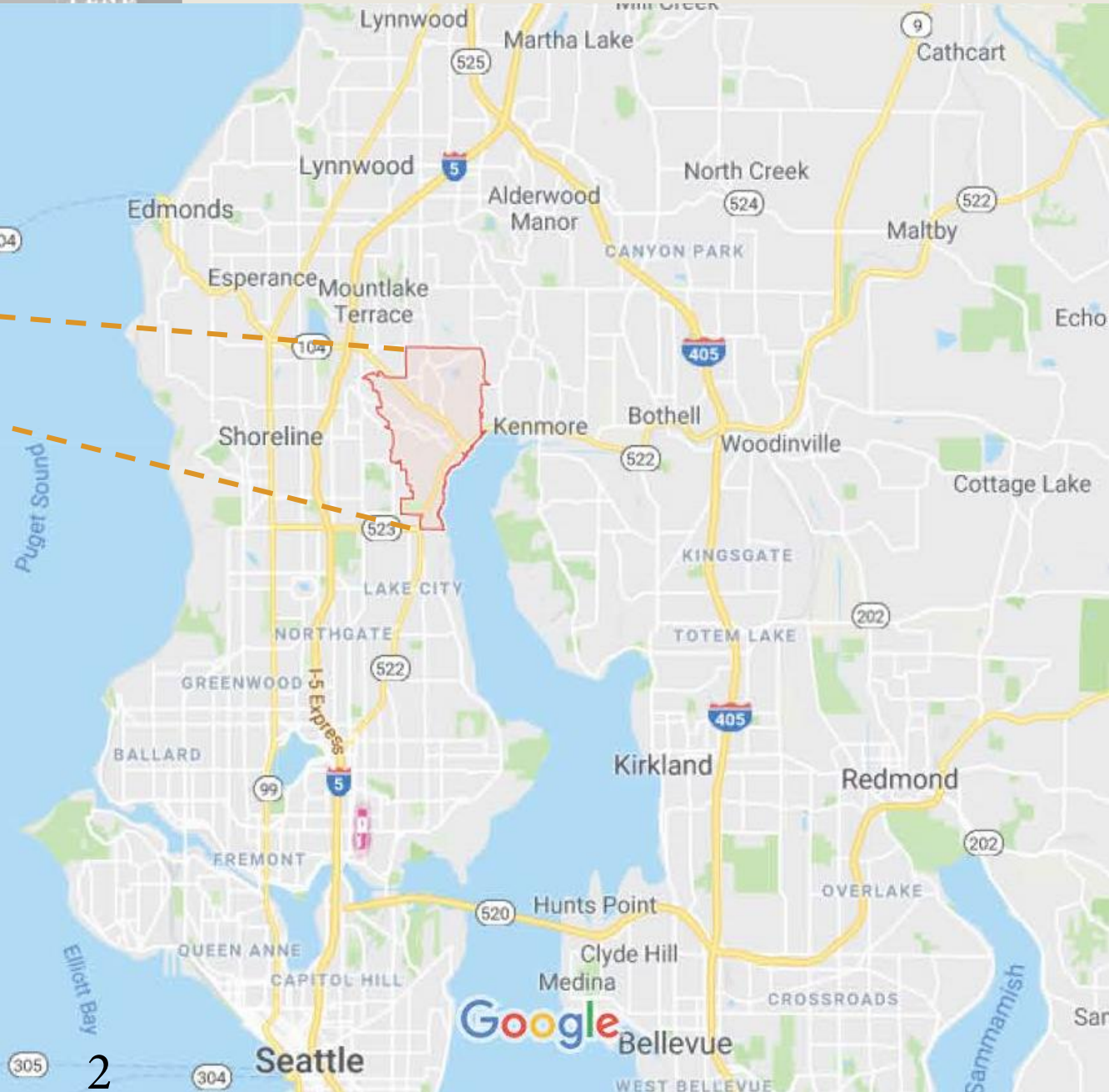


Transportation Funding Challenges for Small Cities



PRESENTED TO:

WASHINGTON JOINT TRANSPORTATION COMMITTEE



Lake Forest Park is a small city north of Seattle in King County bordering Snohomish County.

Lake Forest Park

By the Numbers

SR 522
46,000 Vehicle Per Day

SR 104
20,000 Vehicle Per Day

Demographics

Population	13,392
Live/Work in LFP	9%
Retail Sales Per Capita	\$3,443
Commercial Area	2%

SR 104

SR 522



- Residential community on the shore of Lake Washington
- Regional transportation pinch point of SR 522/SR 104
- Transportation challenges compounded by the improvements associated with ST2/3

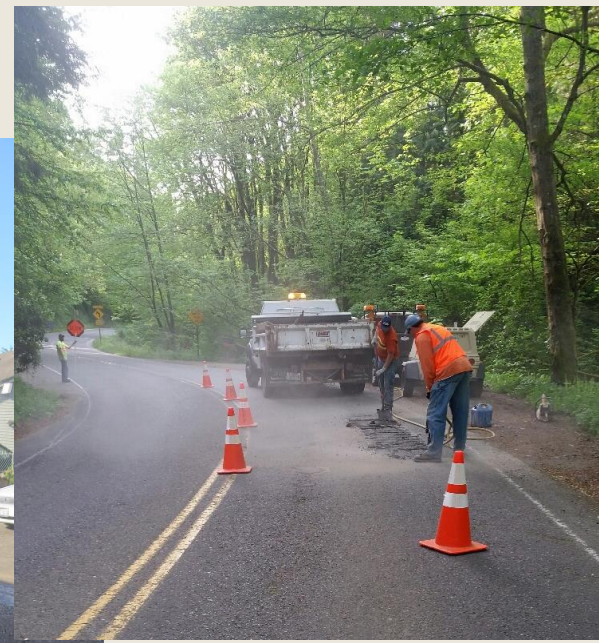
Funding Tools Available are Insufficient

Revenue Based on Population of 13,392:

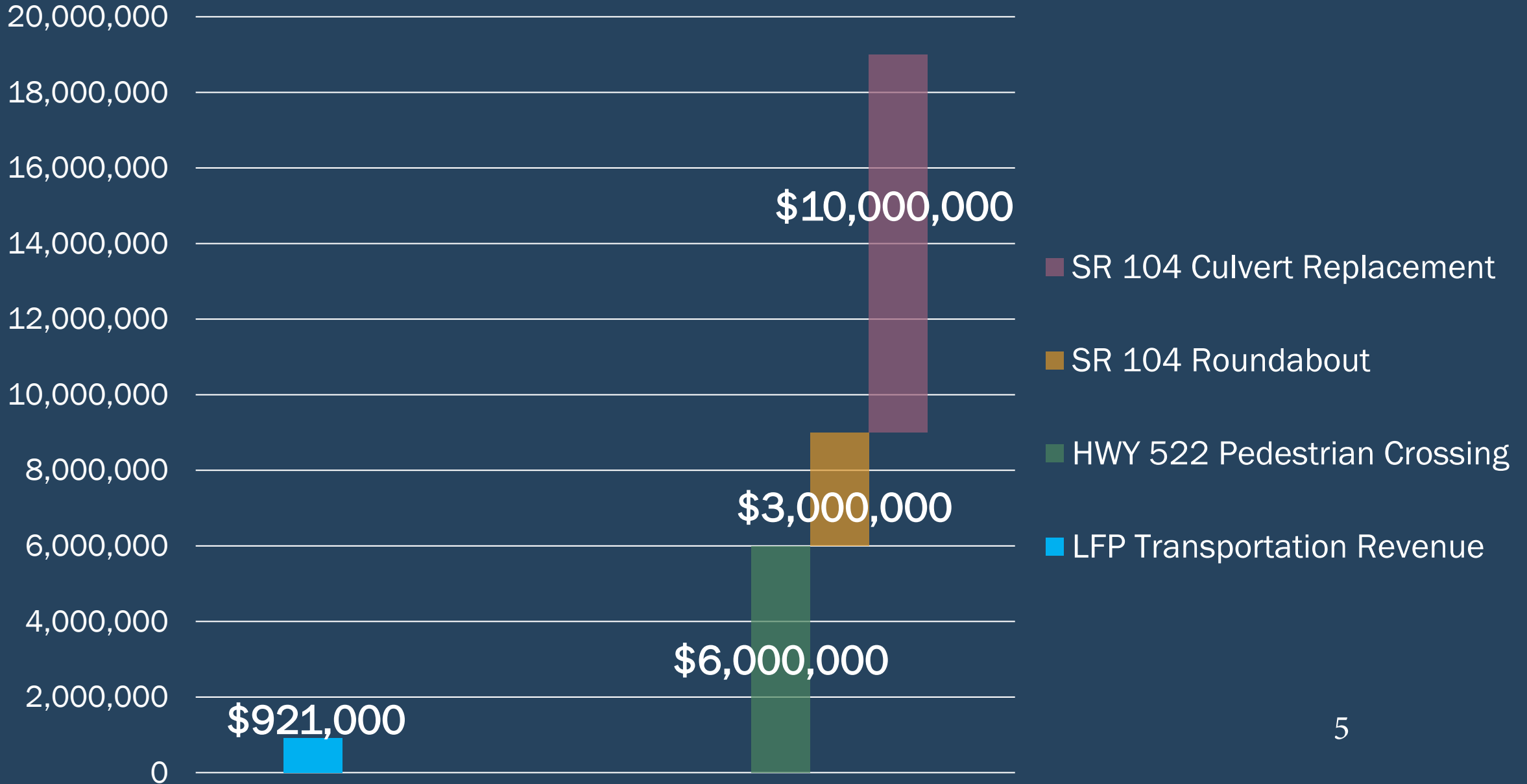
- REET Funds
- Transportation Benefit District
- Gas Tax

City Revenue is Used to fund:

- Street maintenance
- Overlay
- Traffic engineering
- ADA Ramps & Sidewalks
- And much more....



SMALL CITY REVENUE TOOLS ARE INSUFFICIENT FOR REGIONAL TRANSPORTATION NEEDS



SR 104 Culvert



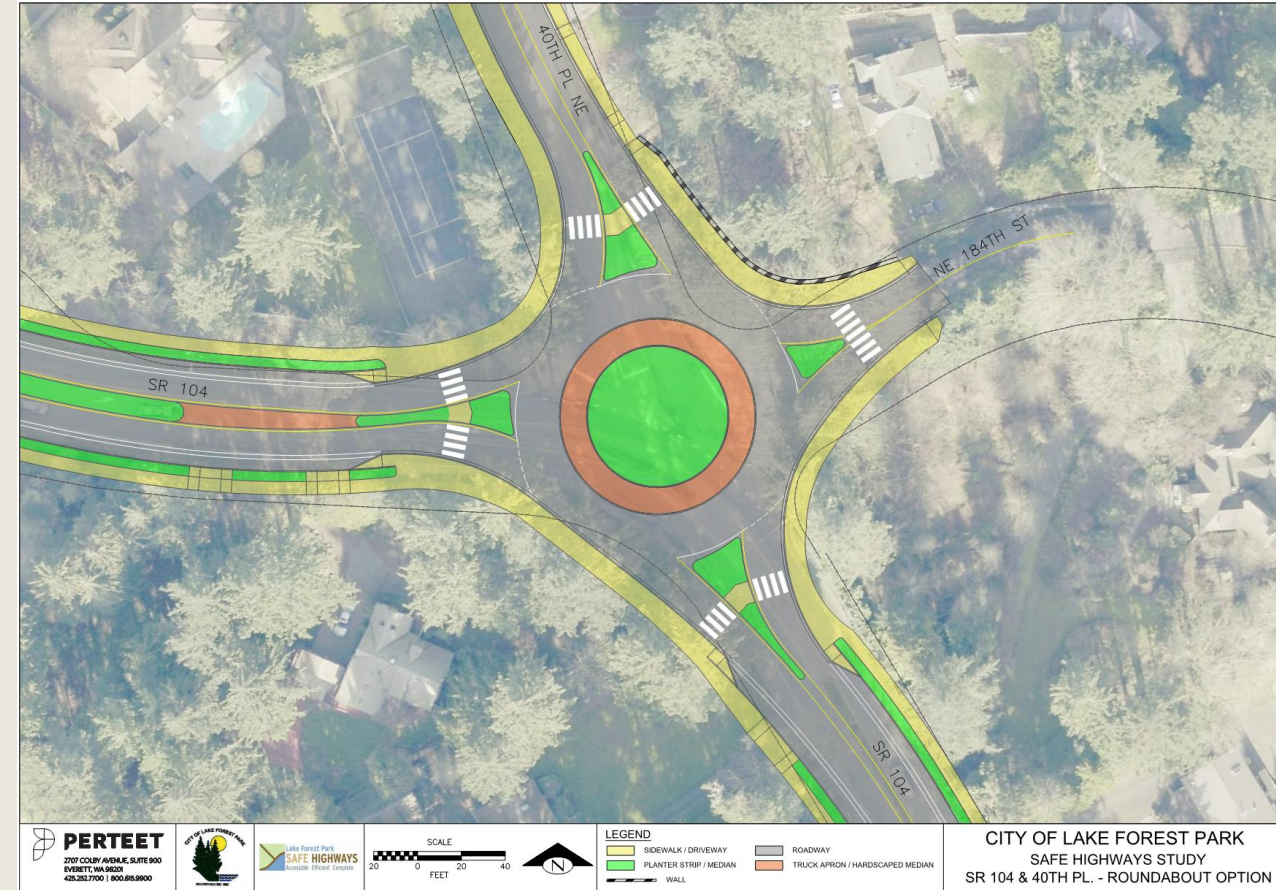
- Eliminate a high-priority WSDOT fish barrier at SR 104
- Remove a privately-owned culvert that collapsed 20 years ago and restore it to an open stream channel
- Replace two downstream culverts that are fish barriers
- Restore '700' of Lyon Creek



Project Cost Estimate	
Design and Engineering (secured)	\$ 2,140,000.00
Construction	\$ 5,506,000.00
ROW Acquisition	\$ 3,174,000.00
Total	\$ 10,820,000.00

SR 104 & 40th Place NE - Roundabout

Pedestrian Safety and Traffic Calming



- Reduces and Calms Traffic Speeds on Side Streets and SR 104
- Opportunity to Provide Pedestrian Crossing of SR 104
- Allows Smooth Traffic Flow
- Overwhelming Community Support

Estimated Need: \$3,000,000+

SR 522 PEDESTRIAN CROSSING



Above Grade Crossing



Underground Crossing



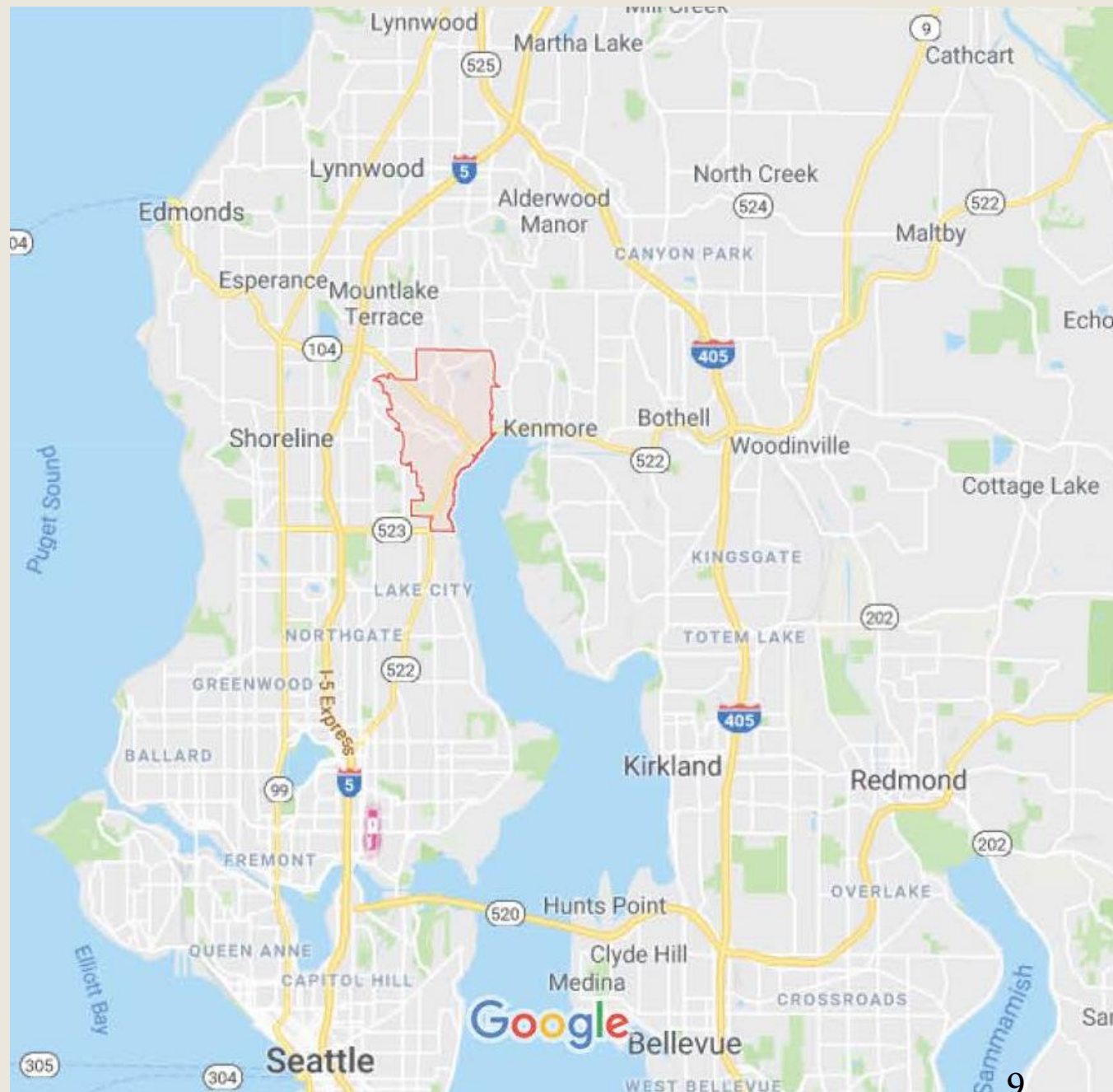
Upgrade Street Level Crossing

A City priority to provide better and safer connections to neighborhoods, Burke-Gilman Trail, Bus Stops, and the Town Center.

Estimated Need: \$10,000,000+

Small Cities:

- Are on the front line of regional transportation problem solving.
- Lack the funding tools to accomplish these efforts.
- Partnerships with the state are vital to their success on transportation projects.



SUCCESS OF SR 522 CULVERT REPLACEMENT

BEFORE



Lyon Creek Flood Mitigation Project – 2016 APWA of WA Environmental Project of the Year

AFTER



THANK YOU

