

# Fish Passage and the Fish Barrier Removal Board

## WA State Joint Transportation Committee Work-Session



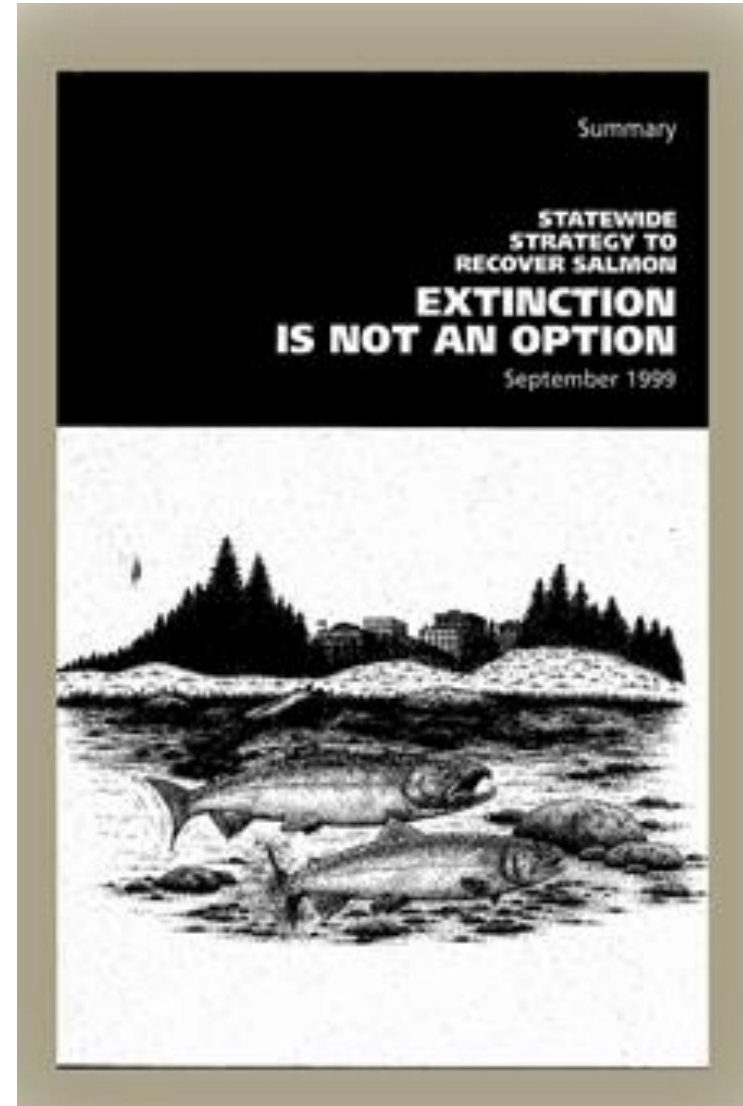
**Tom Jameson, LTC (RET)**  
WDFW  
Fish Passage Division Manager  
July 25<sup>th</sup>, 2019



**BRIAN ABBOTT**  
**FISH BARRIER  
REMOVAL BOARD**



- **Habitat**
  - Agriculture
  - Forest practices
  - Urbanization
  - In-stream flow
  - **Fish barriers**
- **Harvest**
- **Hatcheries**
- **Hydropower**



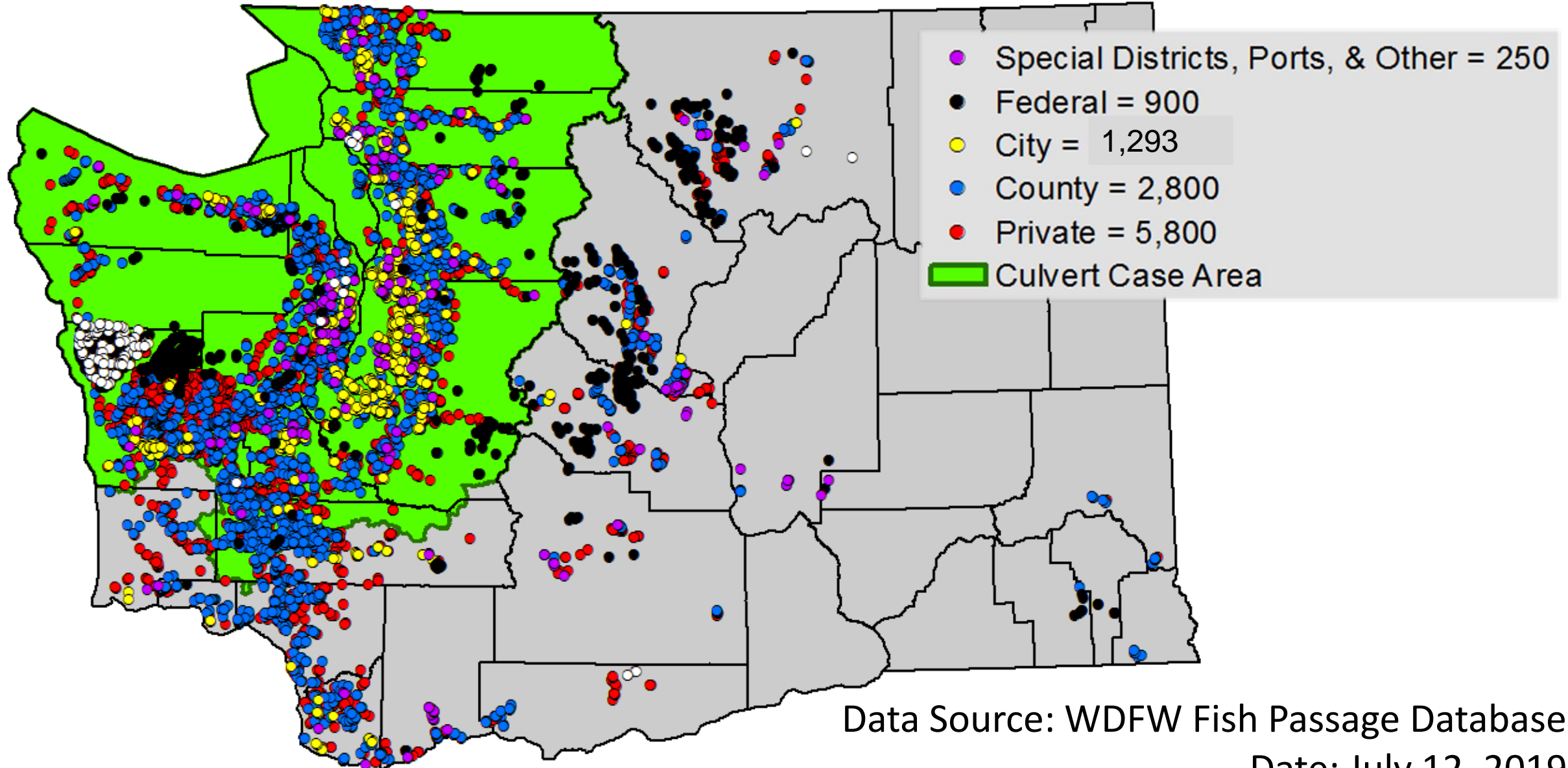
# What are the positive effects of removing a barrier?



- Salmon immediately take advantage of stream habitat
- Economic benefit
- New structure accommodates a historical range of flows
- Flood resilience - Protects infrastructure
- Reduces or eliminates maintenance

Before/After Photos: Lambert Creek, Lewis County

# Known Non-Injunction Salmon and Steelhead Barriers Statewide



Data Source: WDFW Fish Passage Database

Date: July 12, 2019

# Fish Barrier Removal Board (FBRB)



BRIAN ABBOTT  
**FISH BARRIER  
REMOVAL BOARD**

- Established by Legislature in 2014
- Chaired by WDFW
- Members: WSDOT, DNR, Recreation and Conservation Office, Assoc. of Cities, Assoc. of Counties, tribes, salmon recovery regions

**MISSION:** Restore of healthy and harvestable levels of salmon and steelhead statewide through the coordinated and strategic removal of barriers to fish passage (RCW 77.95.160).



# FBRB Coordination & Statutory Requirements



- Work in partnership with WSDOT
- Coordinate with all state agencies & local govts.
- Maximize the state investments
- Maximize the forest landowners investments
- Seek state-local partnership opportunities
- Develop a barrier database & training program
- Don't alter forest practice rules
- Don't delay WSDOT projects

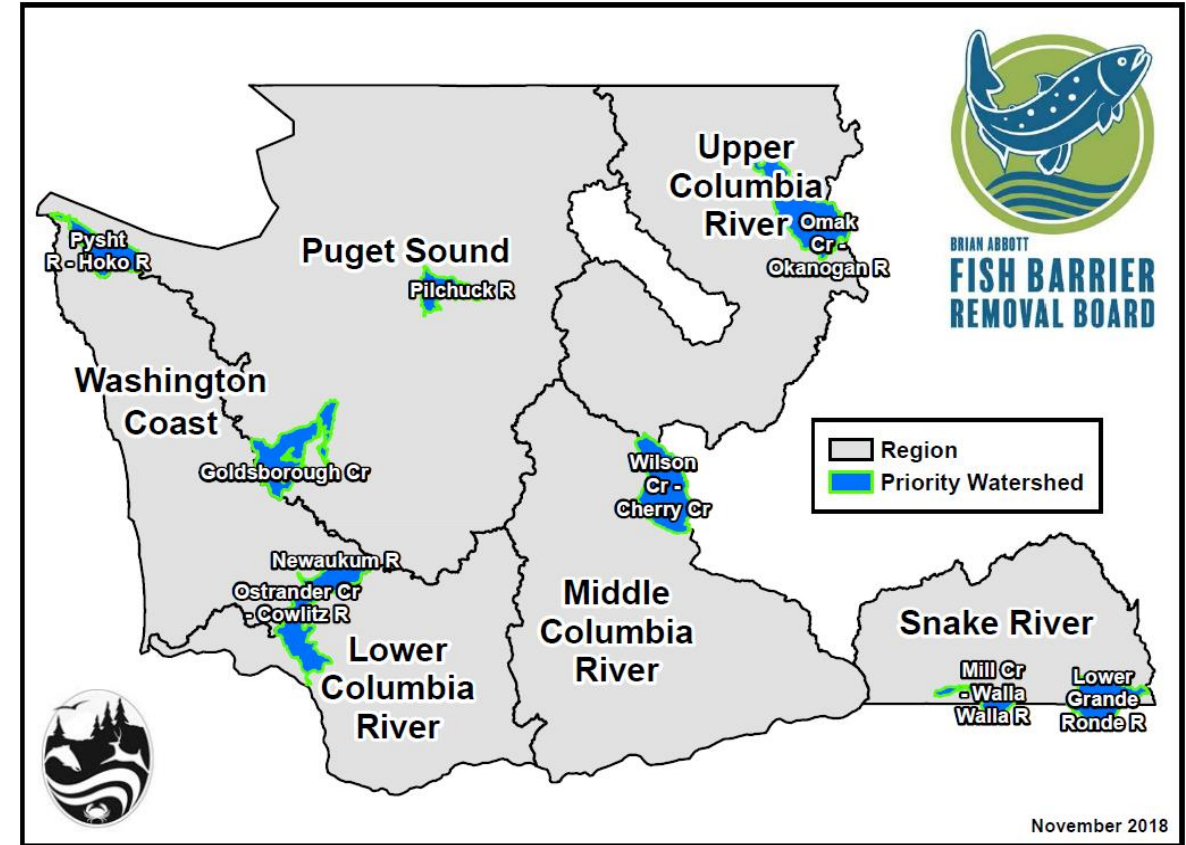
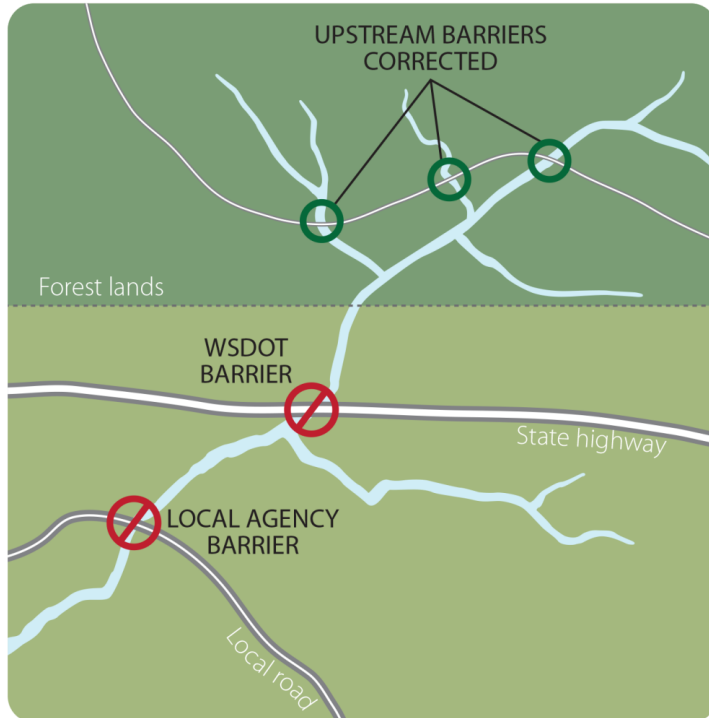


# Two Barrier Removal Strategies



## Watershed Pathway

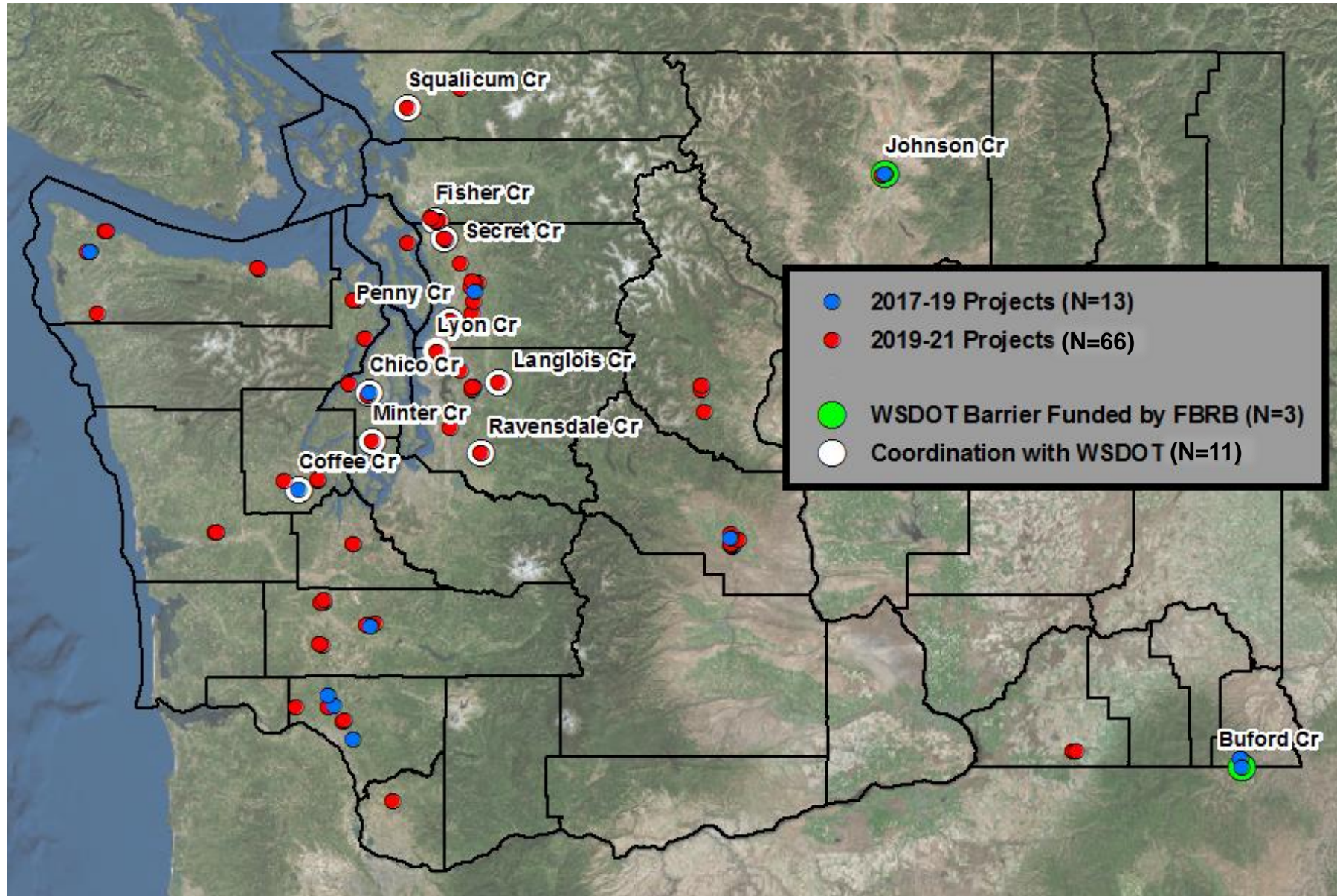
- Board-approved watersheds prioritized by regional salmon recovery organizations
- Maximize benefits to salmon at a population scale



## Coordinated Pathway

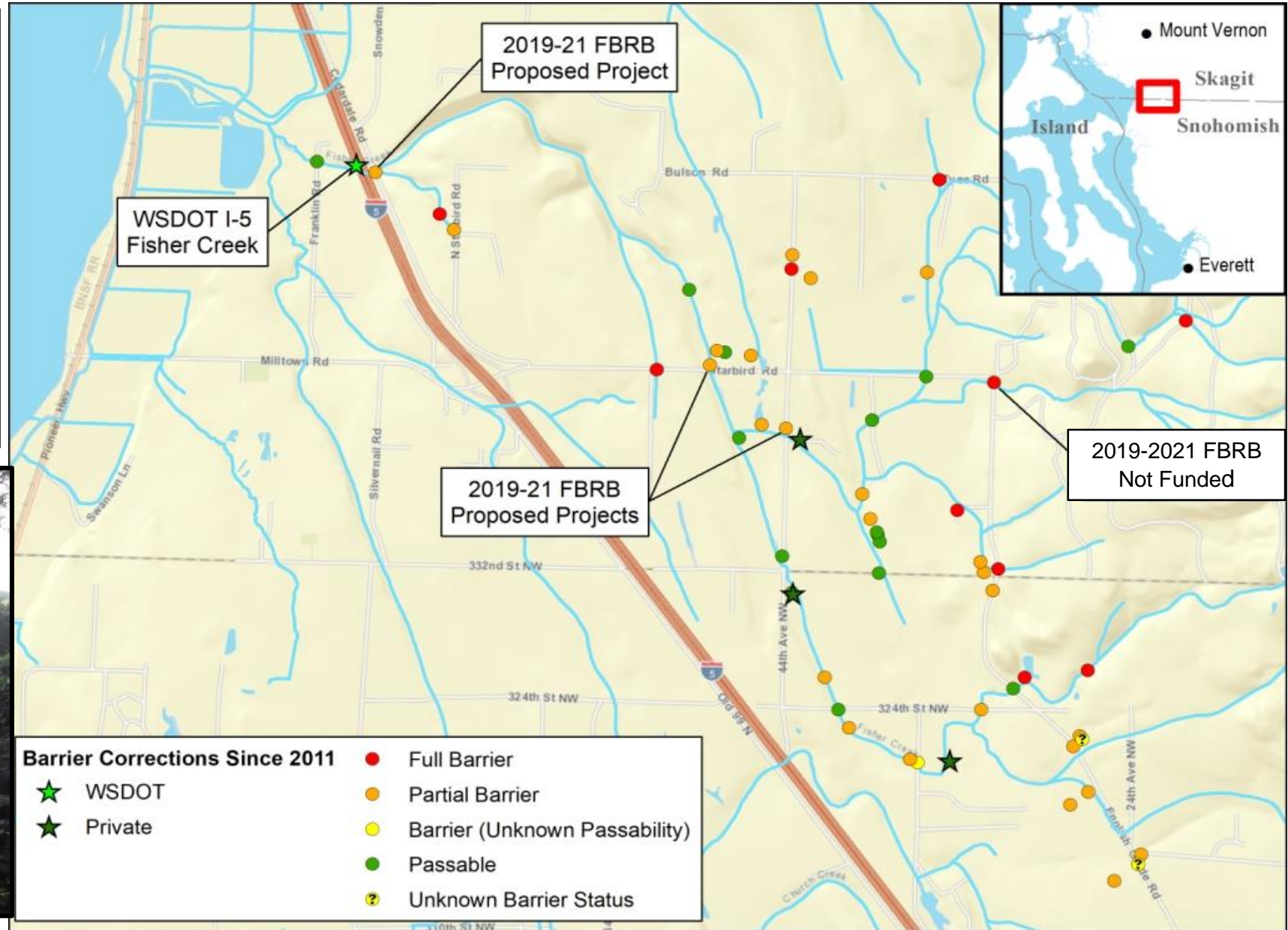
- Fix barriers in close proximity to other barrier repairs
- Leverage previous fish passage investments

# FBRB Coordination with WSDOT

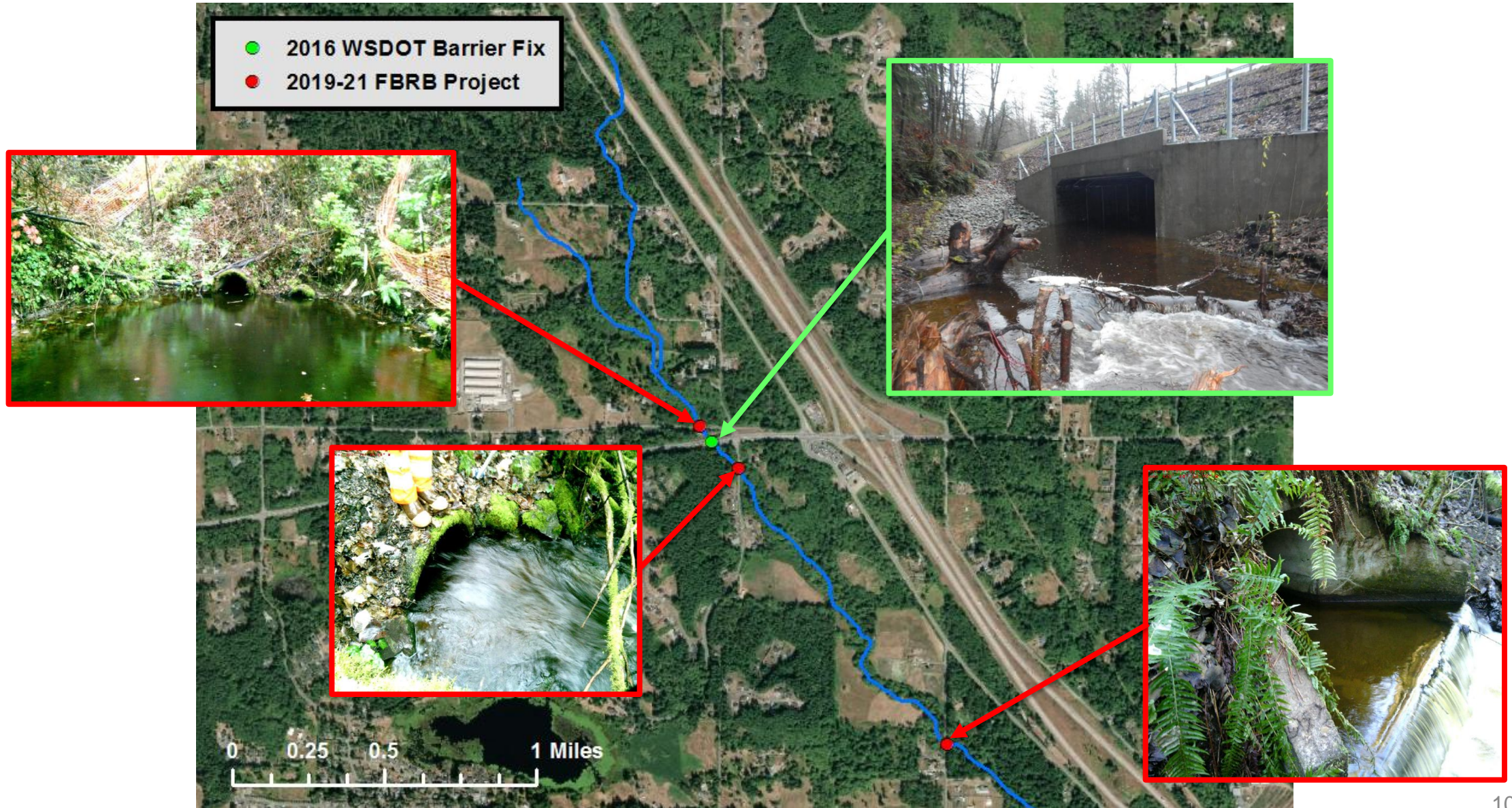




# Leveraging Restoration Work in Fisher Creek Watershed



# Example of Coordination – Secret Creek



# FBRB 17-19 Capital Funded Project List

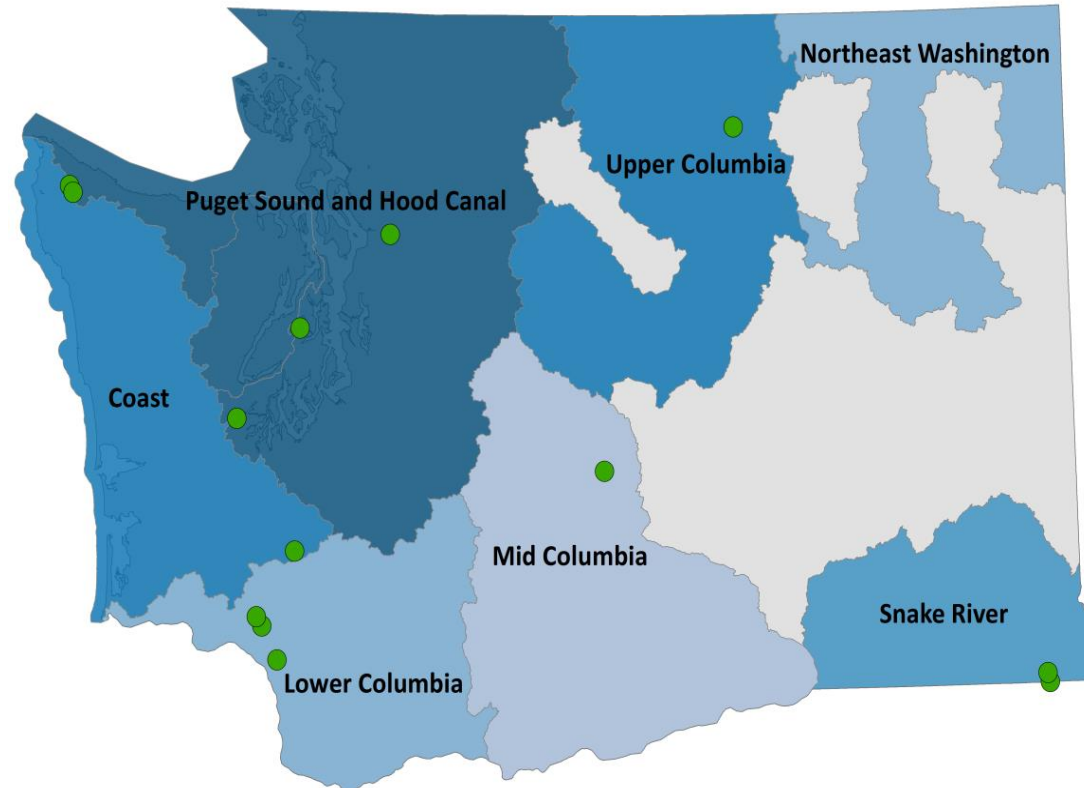


## Requested

\$51.4 M

79 Projects

160 Miles of Habitat



## Received

\$19.7M

13 Projects

42.8 Miles of Habitat,

Project Ownership: 8 County, 2 City, 2 State, 1 Private

# 2019-21 Capital Funded Project List



51 fish passage projects (66 barriers)

- 29 'design-only'
- 37 construction
  - Completed construction projects open 82 total miles of habitat in 2019-21
- \$26.5M capital investment
- 2 State, 39 County, 8 City, and 17 Private barriers

Sponsors: Cities, Counties, Conservation Districts, Tribes



Photo: North Fork Ostrander Cr  
2019-21 Watershed Pathway Project  
Sponsor: Cowlitz Indian Tribe

# For more information:



**Tom Jameson, FBRB Chair**  
**WDFW Fish Passage Division Manager**  
**(360) 902-2612**  
**[thomas.jameson@dfw.wa.gov](mailto:thomas.jameson@dfw.wa.gov)**

