

TOWN OF ROCKFORD

PRESENTATION TO THE JOINT TRANSPORTATION COMMITTEE

HONORABLE MICKI HARNOIS



**ROCKFORD**

Starr Rd

Stringham Rd

278

Chatcolet Rd

Jackson Rd

27



**DRIVE SMART  
STAY SAFE**

**TRAFFIC  
SAFETY  
PROJECT  
NEXT 13 MILES**







EMMA ST

STOP

3-WAY

TRAFFIC FROM LEFT  
DOES NOT STOP

 BANNER  
BANK



*Welcome!*

**The Palouse  
Scenic Byway**





Sam D. Strahan  
Memorial Highway



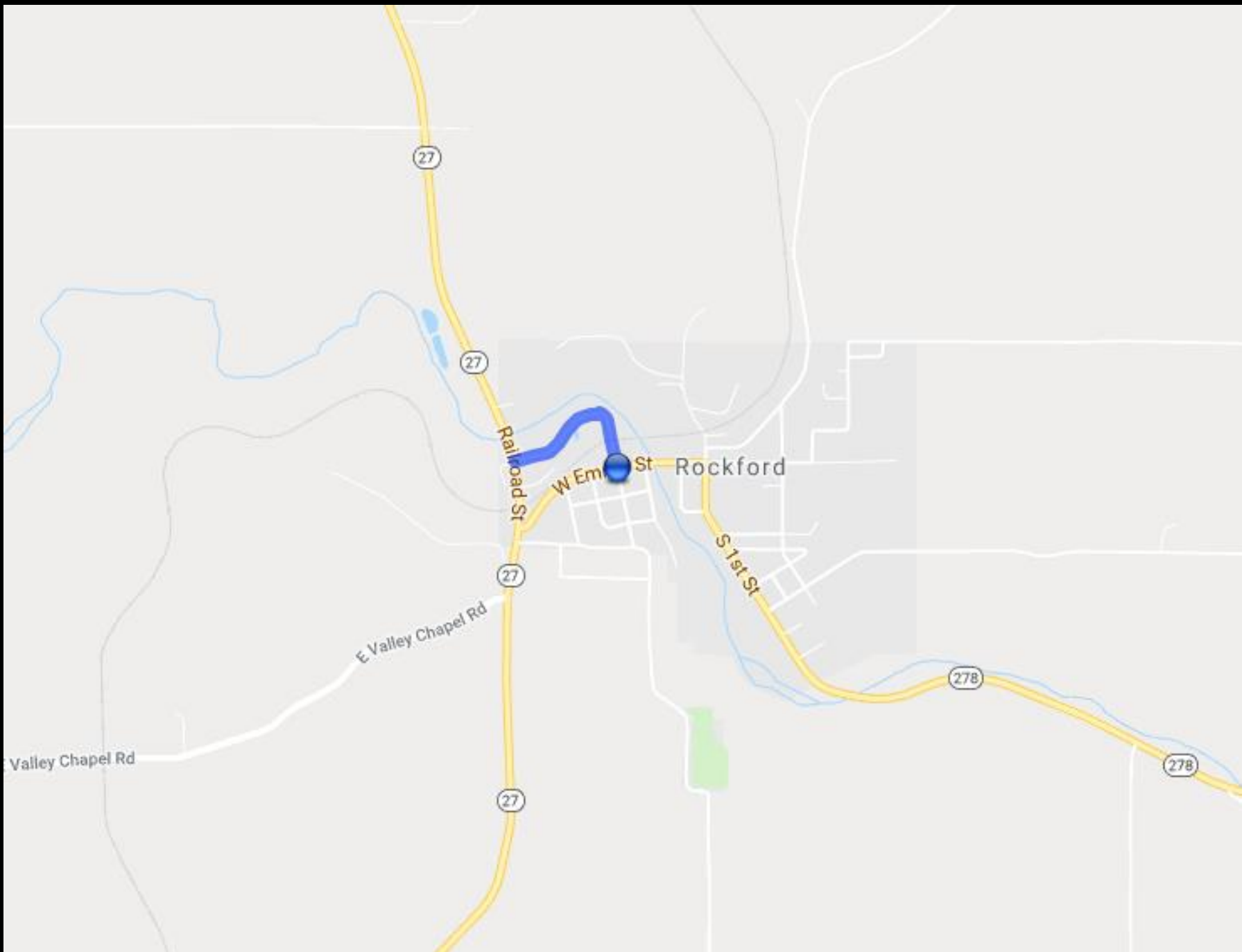


278  
Ro

ZONING ENFORCEMENT  
PERMITS REQUIRED  
FOR ALL SALES  
AND SERVICES

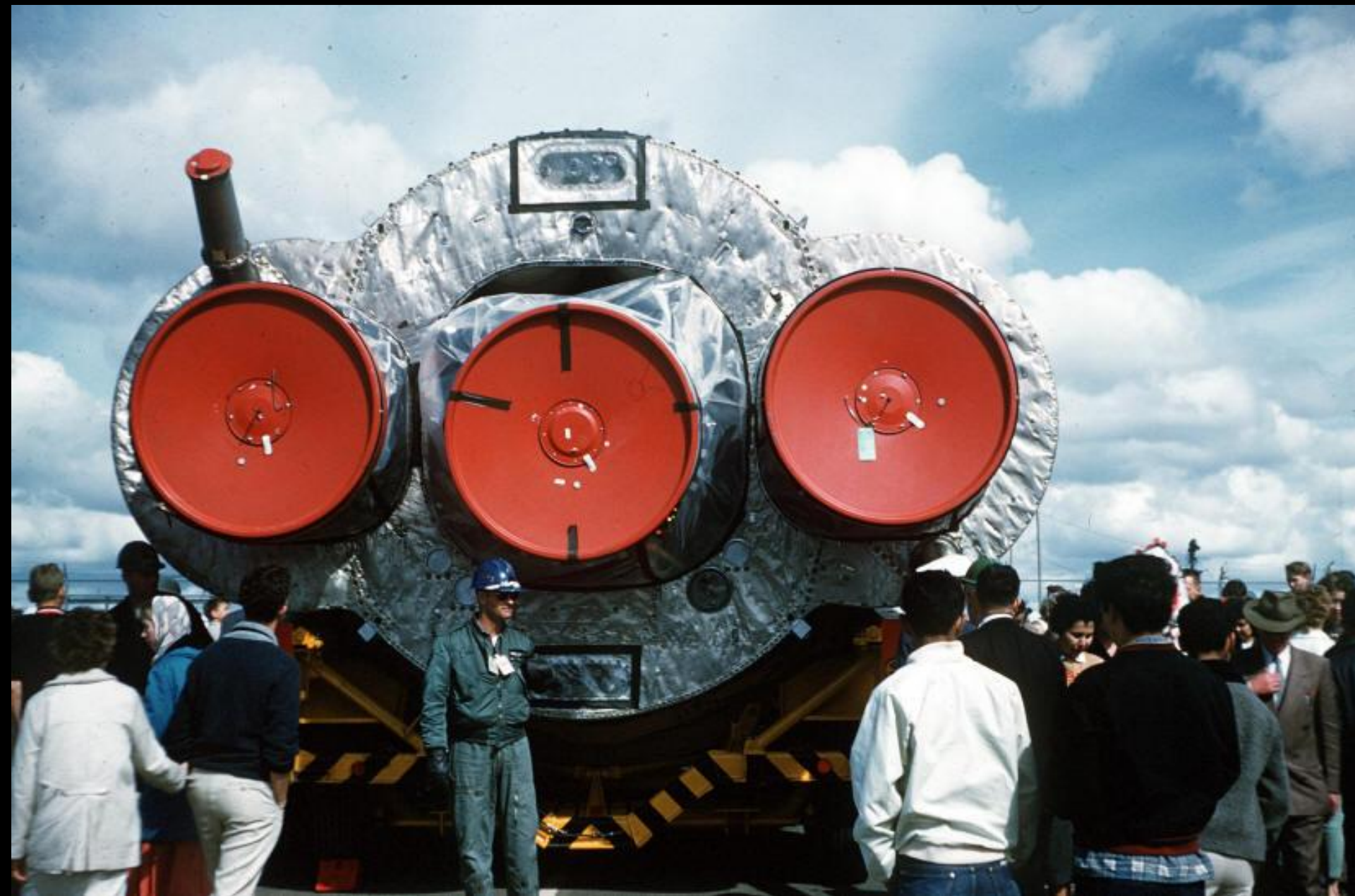


14 FT 1 IN













# PROJECT SCOPE

THE PROJECT PULVERIZES THE EXISTING PAVEMENT INTO THE BASE, RESHAPES THE BASE, PLACES CRUSHED SURFACING TOP COURSE AND A THREE-INCH HMA CAP TO A WIDTH OF 22 FEET. COUNTY FORCES WILL PLACE SHOULDER ROCK AND REPLACE EXISTING DETERIORATED CULVERTS.

## EXISTING CONDITION:

- THE EXISTING SURFACE IS EXTREMELY DETERIORATED WITH MEDIUM TO HIGH ALLIGATOR CRACKING. THE STREET SERVES AS A OVERSIZE LOAD BYPASS ROUTE FOR SR 27.

# PROJECT COST

- RECONSTRUCTION

0.38 MILES (LENGTH OF PROJECT)

\$761,000 (TIB APPLICATION AMOUNT)

- TIB PROJECT WITH SPOKANE COUNTY (SCPP)

- TOTAL DESIGN \$20,489

- TOTAL CONSTRUCTION \$198,450

- TOTAL TIB FUNDING \$218,939

# Thank You!

Micki Harnois, Councilmember  
Town of Rockford