

# Restoring Fish Passage at WSDOT Stream Crossings

## Joint Transportation Committee Tour October 2019

### Program Overview

Kim Mueller, P.E.  
Fish Passage Delivery Manager  
Environmental Services Office

Paul Wagner  
Biology Branch Manager  
Environmental Services Office

Roger Millar, Secretary of Transportation

Keith Metcalf, Deputy Secretary of Transportation

# Injunction Overview

## Culvert Litigation Chronology and Overview (Handouts in Binder)

- ❑ Litigation activity and timeframes
  
- ❑ Injunction directions
  - WSDOT's deadline to address barriers with significant habitat
  - Preference for corrections
  - Ongoing requirement to assess culverts
  - Tribal coordination

# WSDOT & the Federal “Culvert” Injunction

- ❑ WSDOT has about 2,000 fish barriers statewide
- ❑ 1,001\* barriers subject to the Federal Injunction as of June 2019
  - ✓ ~413\* barriers with significant habitat address 90% blocked habitat\*\* -- Must be corrected by 2030
  - ✓ An additional 588\* must be corrected at the end of the structure’s life, or as part of a transportation project
  - ✓ 66 barriers corrected through 2018 Construction Season



**Area Covered by Injunction**

\* Based on current known barriers, we are required to re-inventory regularly.

\*\*For the purpose of implementing the injunction, habitat gain is measured from the barrier to end of salmon habitat regardless of other barriers.

# Investment Level For Injunction Compliance<sup>1</sup>

Biennium (in Millions)	13-15	15-17	17-19	19-21	21-23	23-25 to 29-31	Cumulative Total thru 29-31
Current Funding <sup>2</sup>	\$23.8	\$67	\$109	\$275	\$78	\$186	\$739
Add'l Funding Required	--	--	--	--	\$648	\$2,410	\$3,057
<b>Total Compliance Funding</b>	<b>\$23.8</b>	<b>\$67</b>	<b>\$109</b>	<b>\$275</b>	<b>\$726</b>	<b>\$2,595</b>	<b>\$3,796</b>
Barriers Corrected	19	25	22	24	90-110	390-420	515-540
Potential Habitat Gain (%)	4%	10%	10%	10-15%	20-25%	21-31%	90%+

<sup>1</sup> Based on current known barriers. We are required to re-inventory regularly.

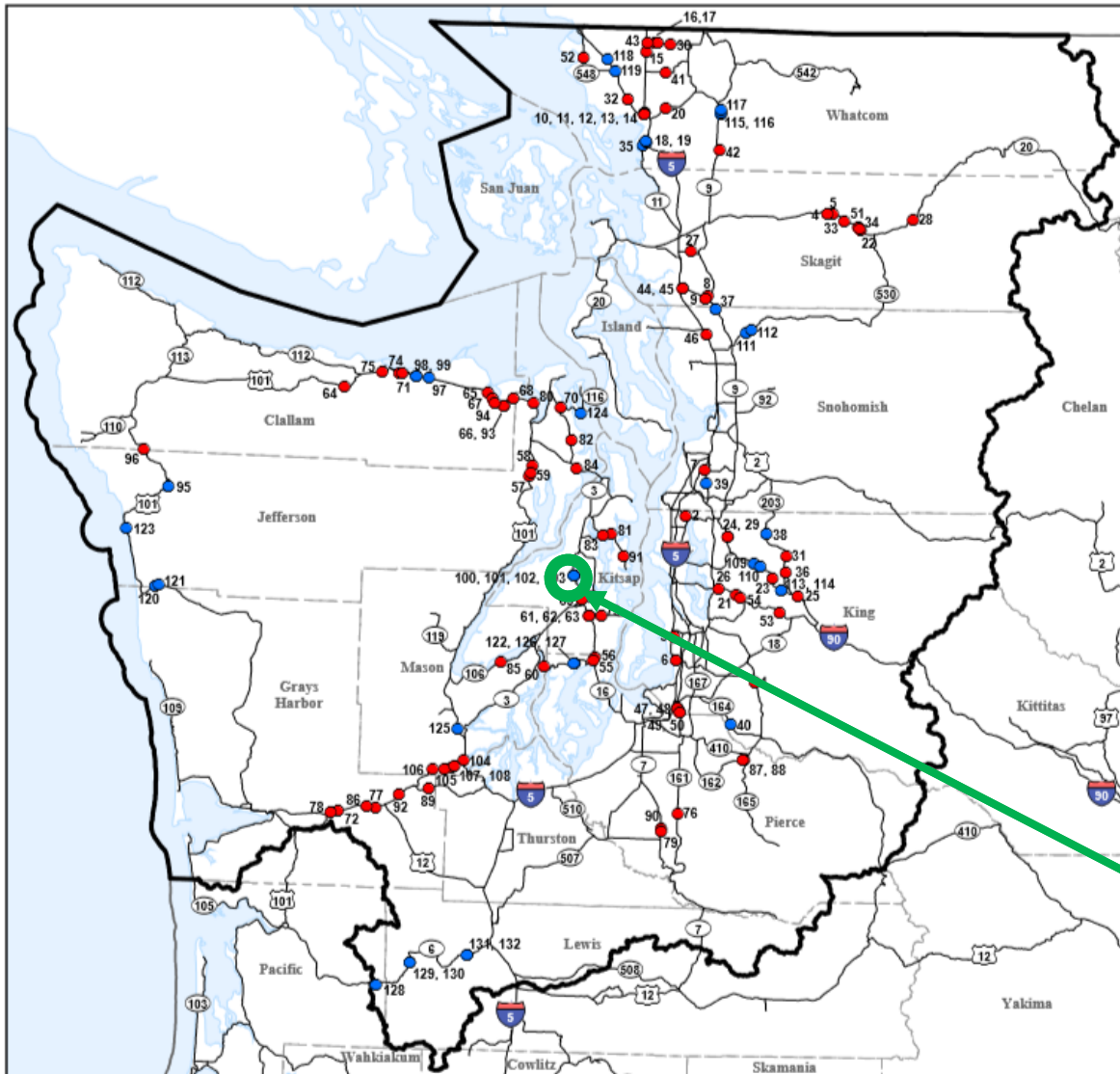
<sup>2</sup> Current Law with 601 timing adjustment (does not change current law total)

NOTE: Total compliance funding for 2021-23 and beyond includes:

- \$9-10M/biennium outside the case area
- \$10M-\$31M/biennium to address culvert failures within injunction area



# Delivery Plan: 19-21



WSDOT Stand-alone Fish Passage Projects planned for Design and Construction 19-21 within the Culvert Case Area

### Legend

- Construction 19/21 (39)
- Design 19/21 (93)
- ▭ US v. WA Case Area Boundary

Chico Creek

# Contact

For more information about  
Restoring Fish Passage at WSDOT Stream Crossings, please contact:

Kim Mueller, P.E., Fish Passage Delivery Manager  
Washington State Department of Transportation  
Environmental Services Office  
(360) 705-7404, [Kim.Mueller@wsdot.wa.gov](mailto:Kim.Mueller@wsdot.wa.gov)

# Restoring Fish Passage at WSDOT Stream Crossings

## Joint Transportation Committee Tour October 2019 SR3/Chico Creek

Kim Mueller, P.E.  
Fish Passage Delivery Manager  
Environmental Services Office

Paul Wagner  
Biology Branch Manager  
Environmental Services Office

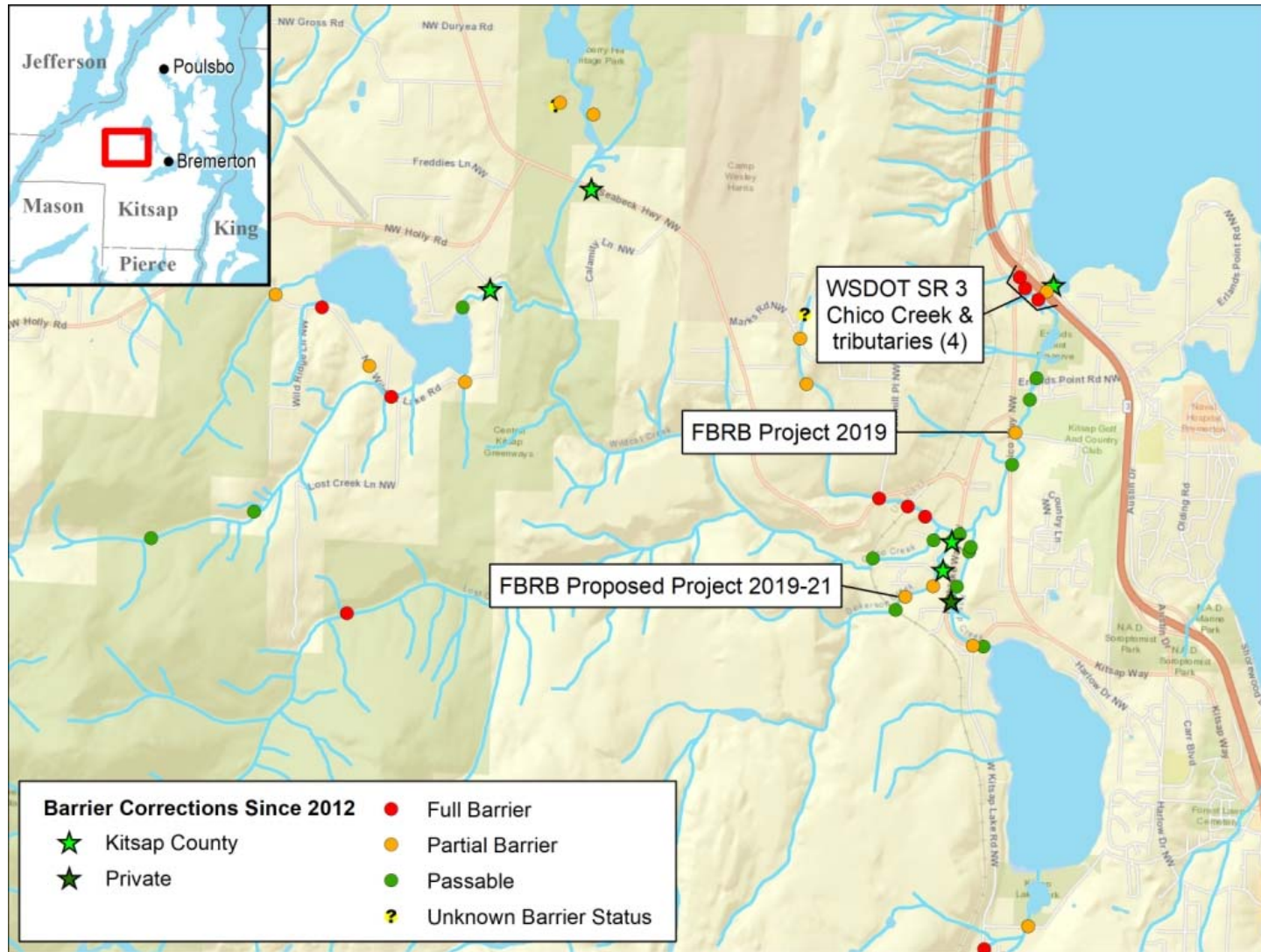
Roger Millar, Secretary of Transportation

Keith Metcalf, Deputy Secretary of Transportation





# Leveraging Restoration Work in Chico Creek Watershed

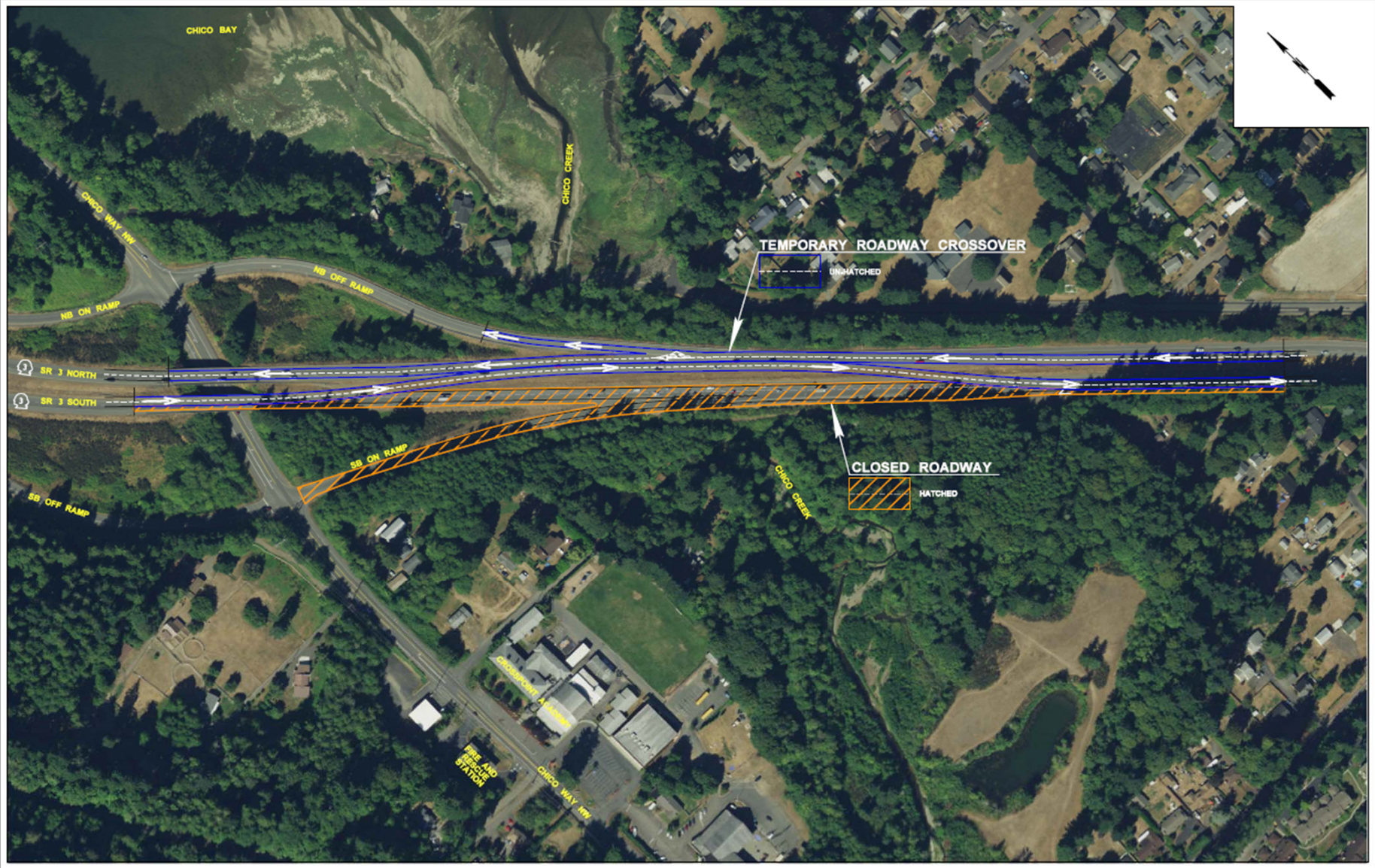


# Chico Creek - Existing

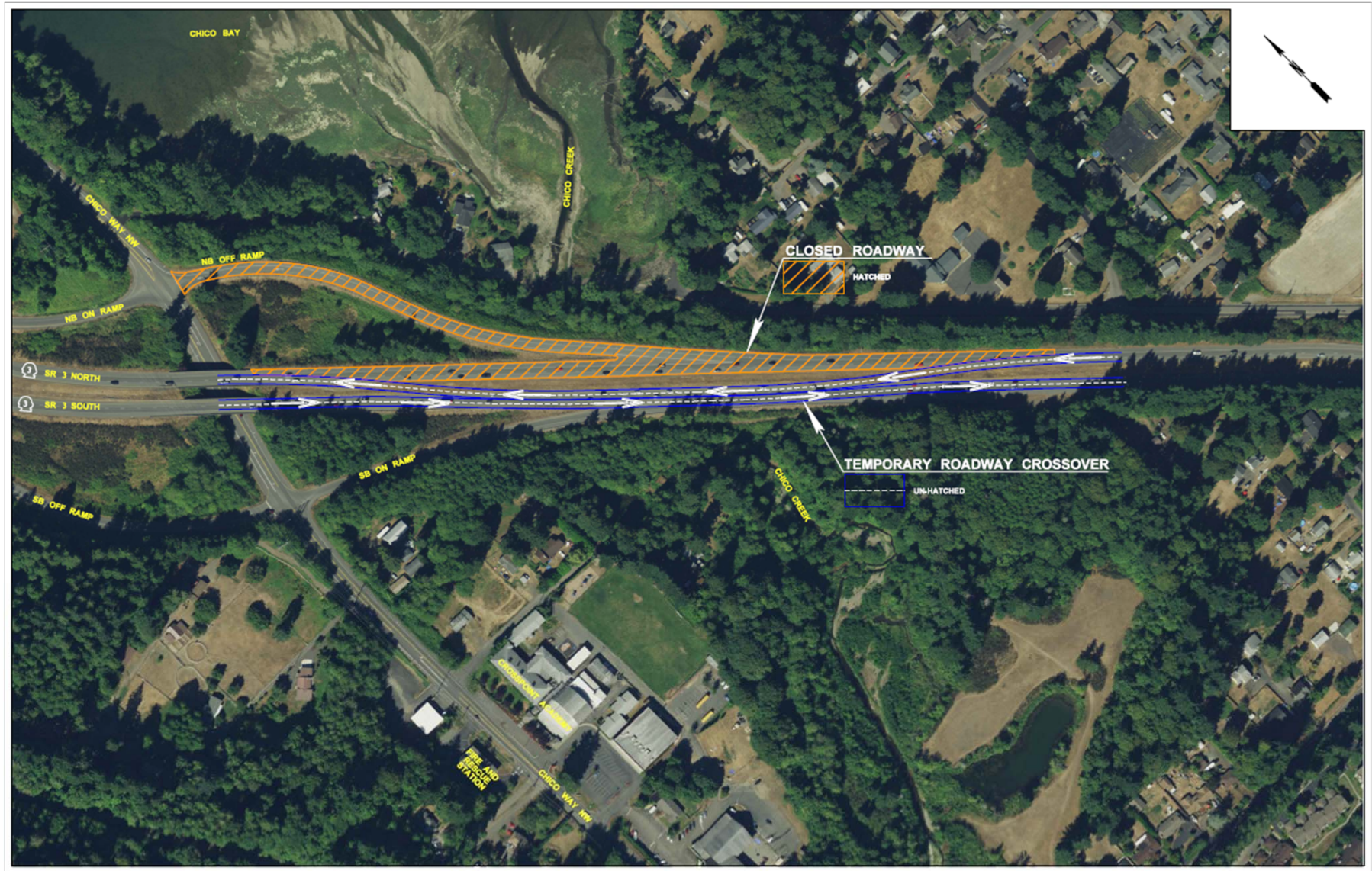
- Chico Creek is a high priority based on potential habitat gain
- Leverages other work within the Chico Creek basin
- Chronic maintenance issue



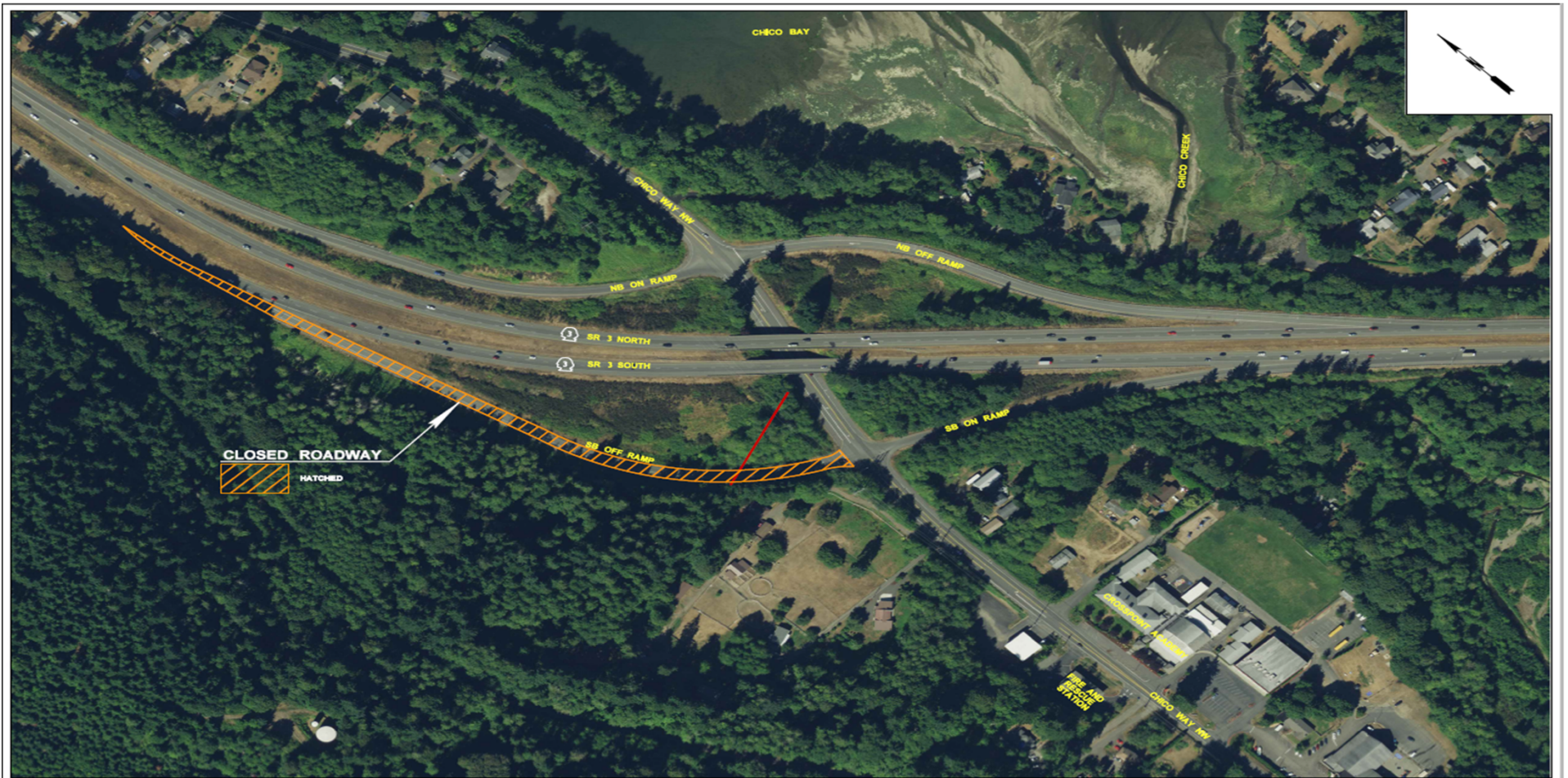
# Chico Way to SR3 SB Closure - Conceptual



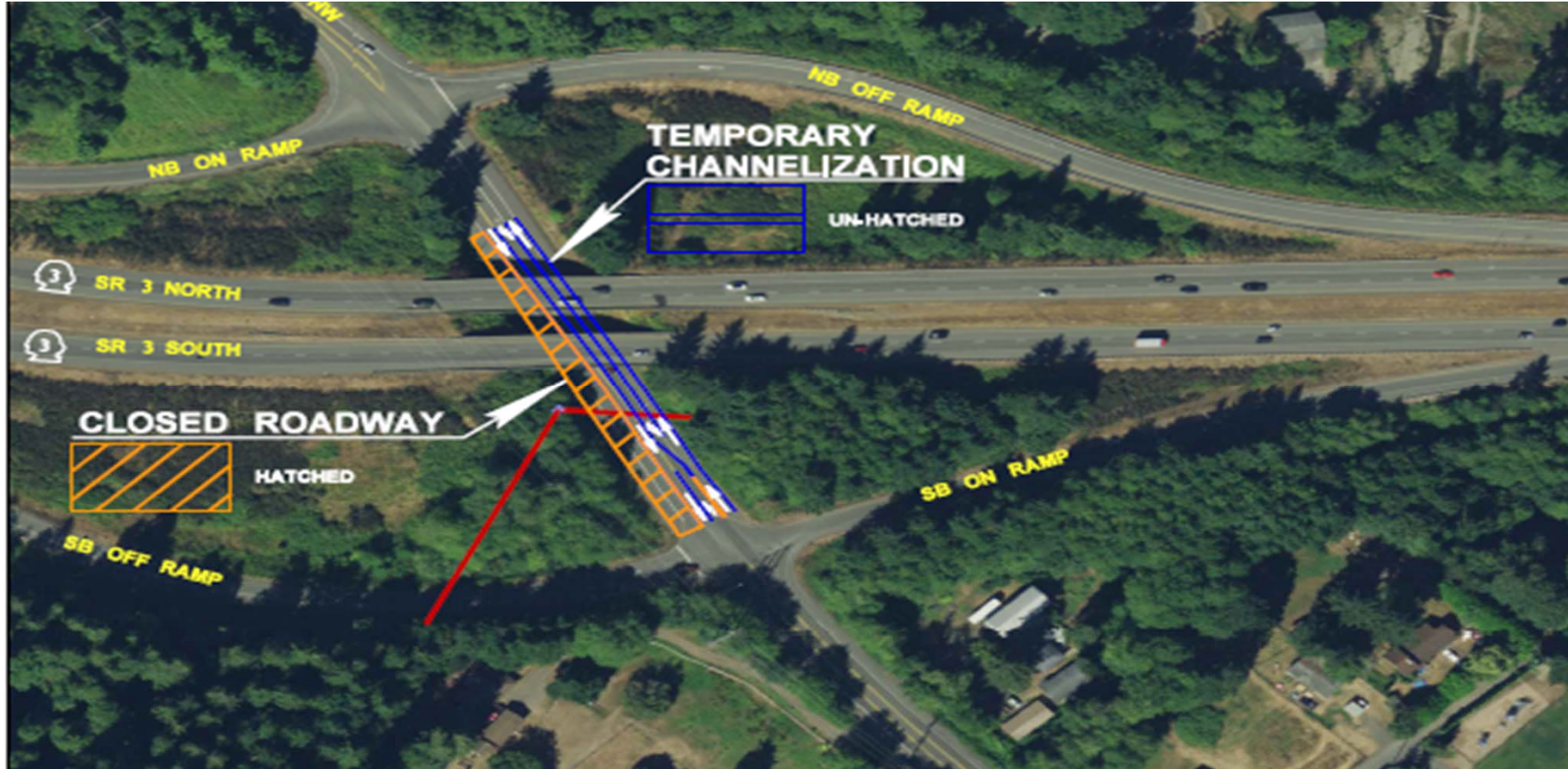
# NB SR 3 to Chico Way off-ramp - Conceptual



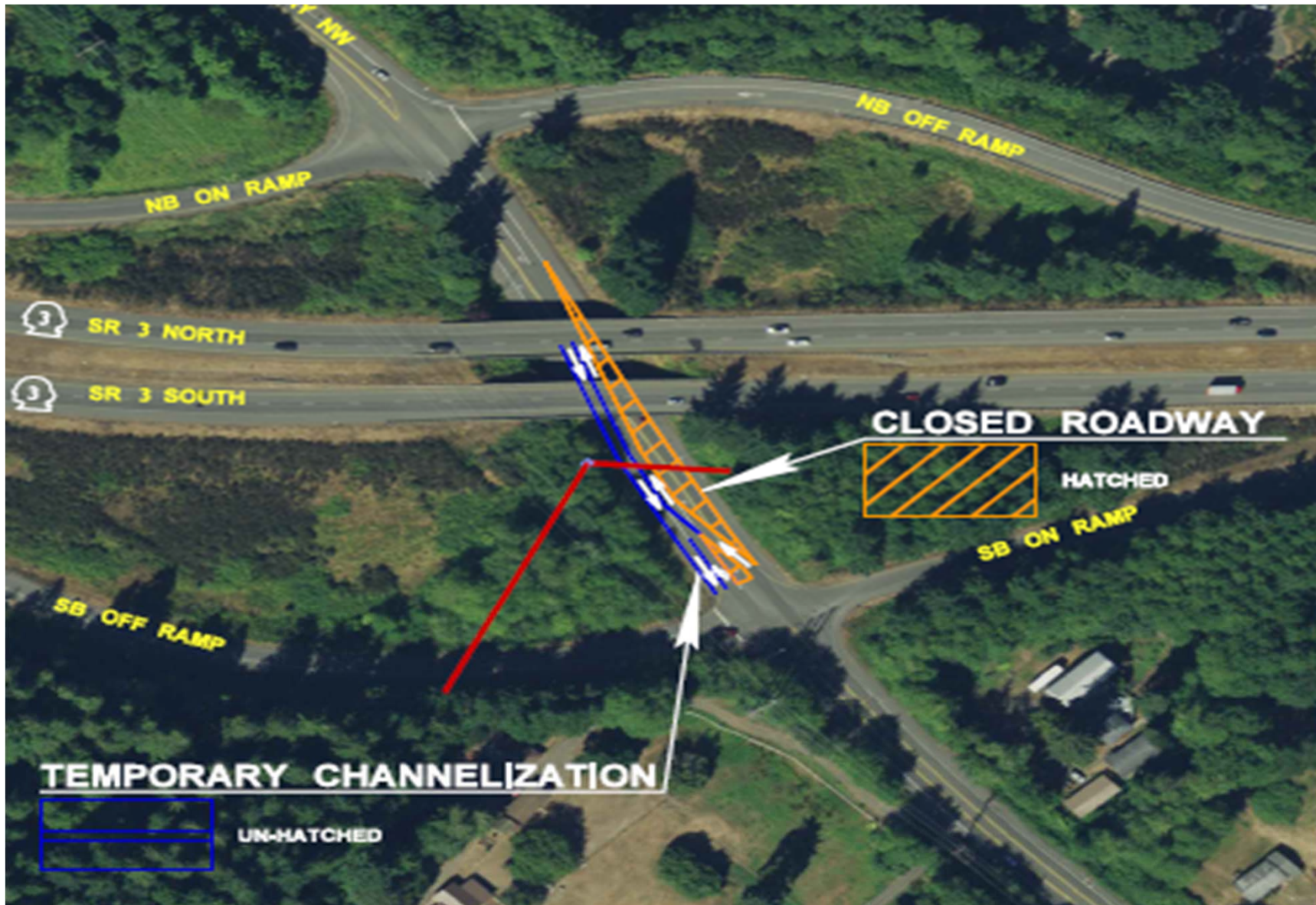
# SR 3 To Chico Way Closure - Conceptual



# Chico Way construction - Conceptual



# Chico Way construction - Conceptual





# Chico Creek – Timeline

## Estimated Project Timeline

- **Spring 2020: Design-Builder selected**
- **Spring 2022: Construction begins**
- **Fall 2024: Project complete**

# Contact

For more information about  
Restoring Fish Passage at WSDOT Stream Crossings, please contact:

Kim Mueller, P.E., Fish Passage Delivery Manager  
Washington State Department of Transportation  
Environmental Services Office  
(360) 705-7404, [Kim.Mueller@wsdot.wa.gov](mailto:Kim.Mueller@wsdot.wa.gov)

Paul Wagner, Biology Branch Manager  
Washington State Department of Transportation  
Environmental Services Office  
(360) 705-740, [Paul.Wagner@wsdot.wa.gov](mailto:Paul.Wagner@wsdot.wa.gov)