

SR 520 Program Update

Joint Transportation Committee

Denise Cieri, P.E.

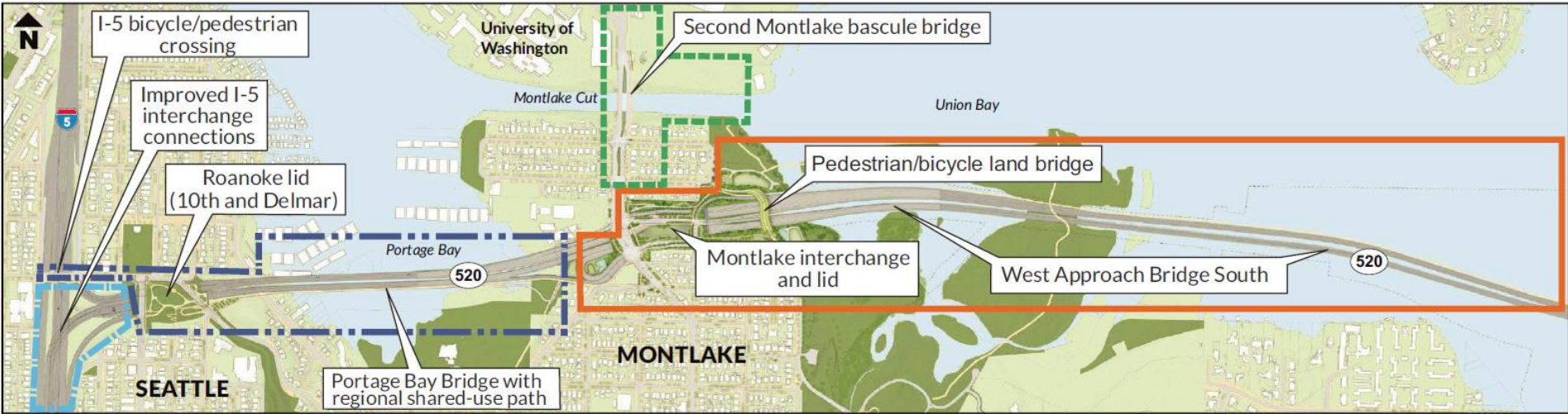
SR 520 Program Administrator, WSDOT

September 19, 2019

Roger Millar, Secretary of Transportation

Keith Metcalf, Deputy Secretary of Transportation

Upcoming “Rest of the West” projects in Seattle

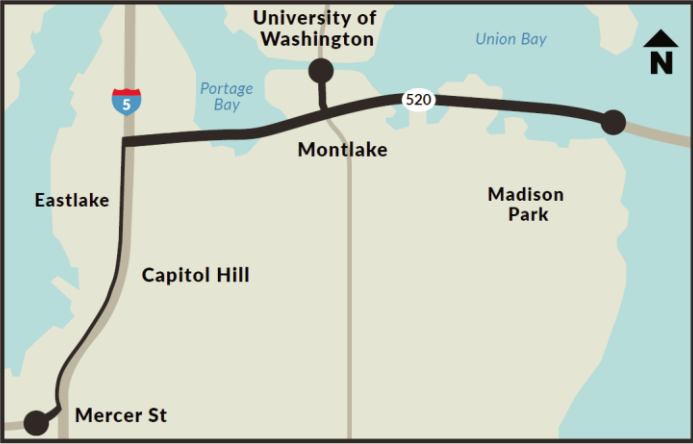


SR 520/I-5 Express Lanes Connection Project
 Construction estimated start: 2020
 Estimated duration: 3 years

Portage Bay Bridge and Roanoke Lid Project
 Construction estimated start: 2023
 Estimated duration: 6 years

Montlake Cut Bascule Bridge Project
 WSDOT will begin additional coordination in 2020 with community stakeholders and agency partners regarding project scope

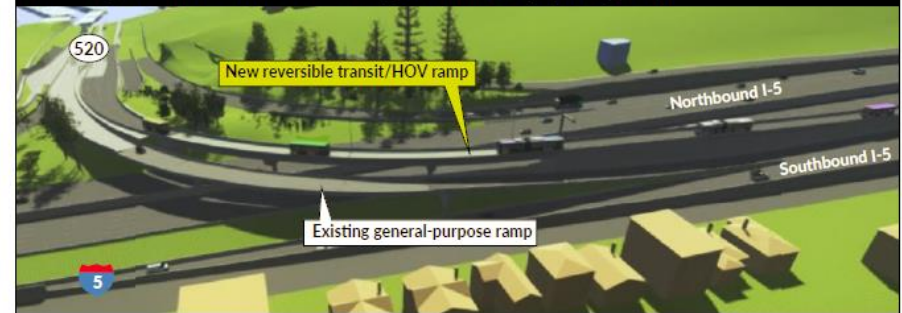
Montlake Project
 Construction start: 2019
 Estimated duration: 4-5 years



SR 520/I-5 Express Lanes Connection Project

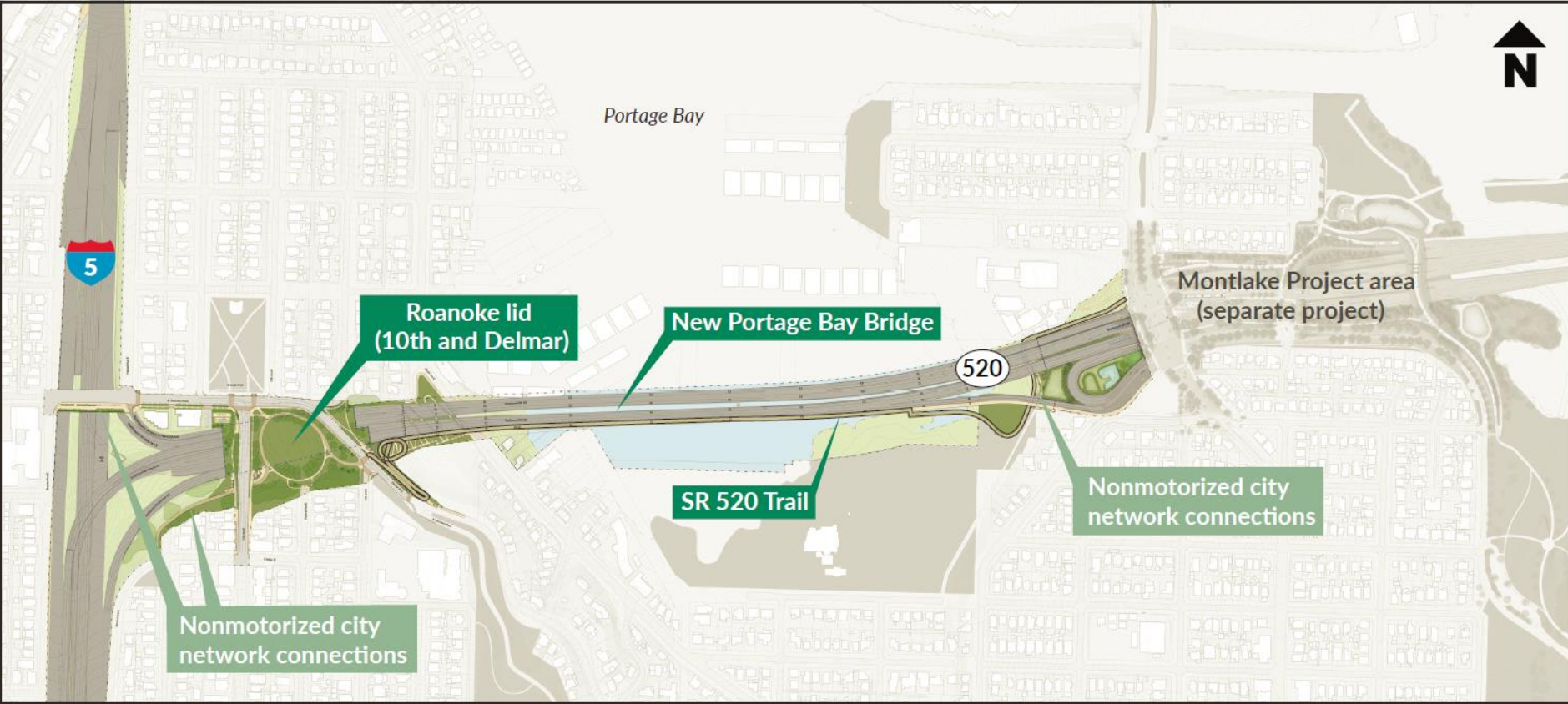


Rendering: View of SR 520/I-5 interchange with new ramp (looking east)

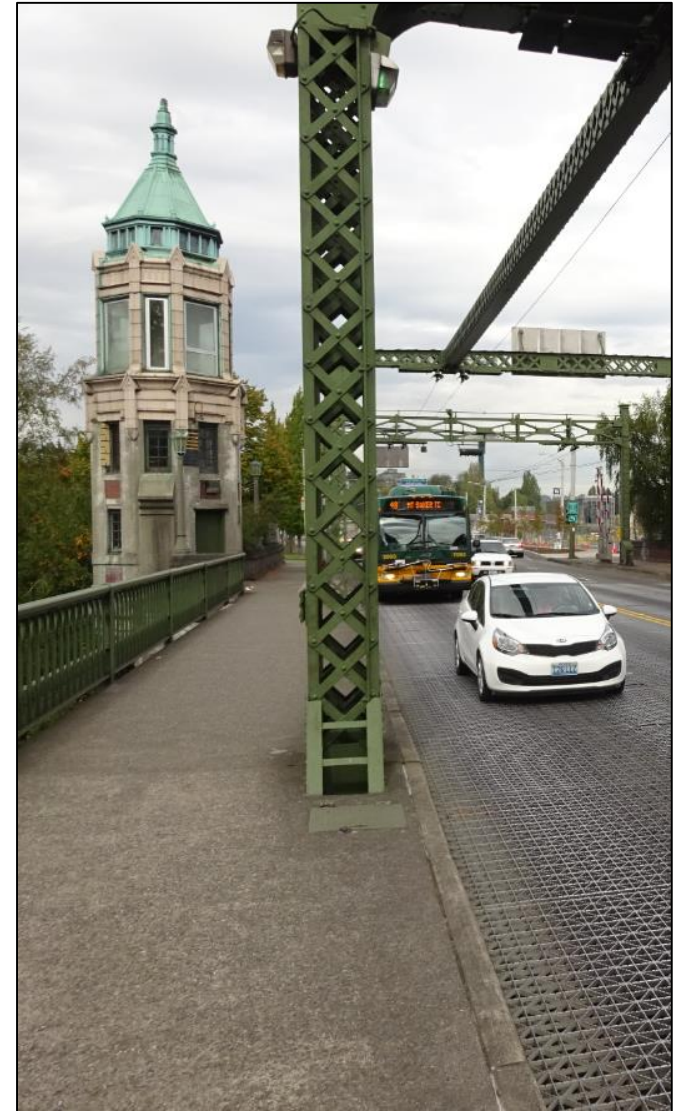
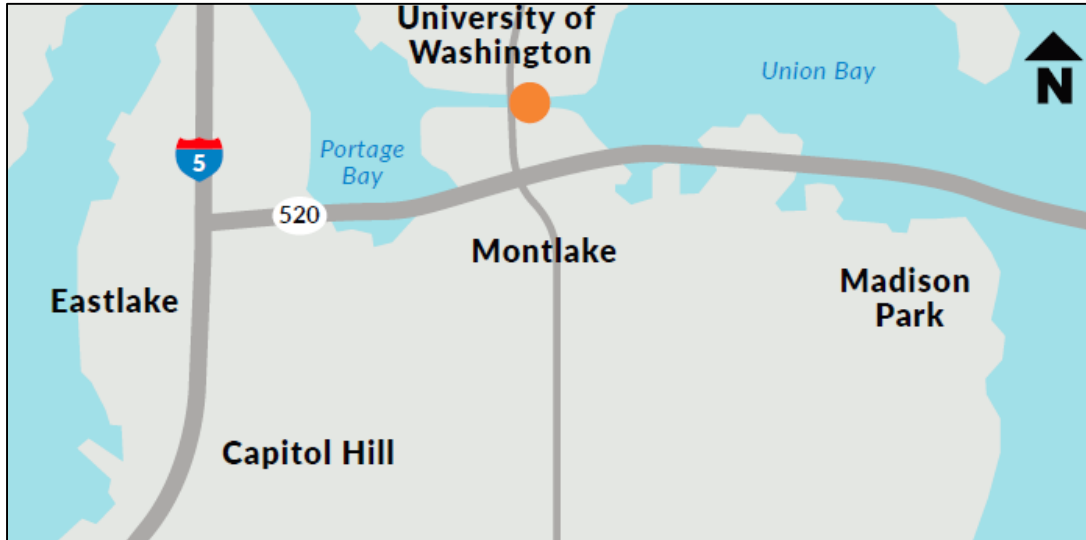


Note: concepts and materials shown are draft ideas for discussion purposes only, and are subject to change.

Portage Bay Bridge and Roanoke Lid Project



Montlake Cut Bascule Bridge Project



Montlake Project

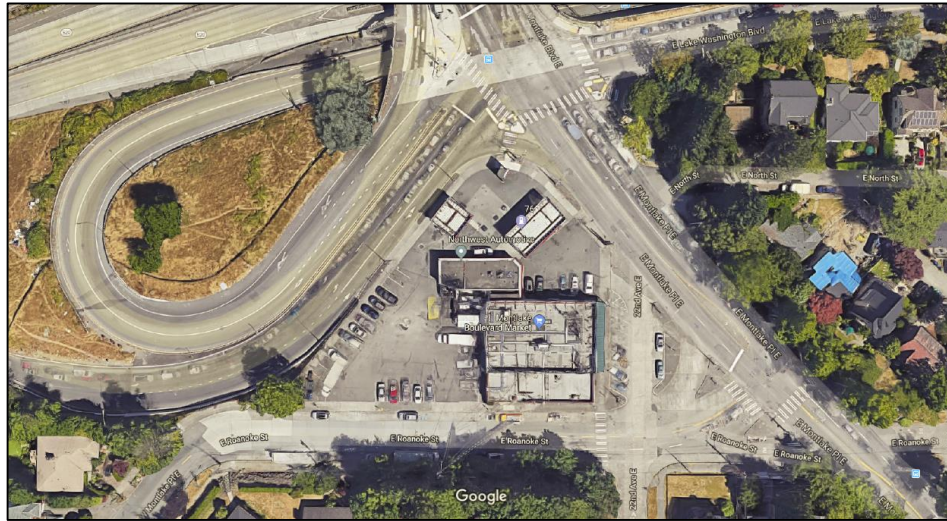


Key elements in the Montlake area, shown at project completion.



Rendering of the new West Approach Bridge South structure, at completion

Montlake property and legislative direction



SR 520 Diversity and Inclusion Program



May 2018

A stylized tree graphic where the trunk and branches are labeled with industry and diversity categories. The trunk is labeled "MINORITY-OWNED", "SMALL BUSINESS", and "WOMEN-OWNED". The branches are labeled "VETERAN-OWNED" and "DISADVANTAGED". The tree is positioned between the text "Architecture & Engineering" on the left and "Construction" on the right.

Architecture & Engineering

Construction

**Celebrating
100 and Growing!**

Small and diverse firms on the SR 520 Program

The logo for Washington State Department of Transportation (WSDOT), featuring a stylized 'W' and 'S' followed by the letters "WSDOT".

Regina Glenn, SR 520 Diversity and Inclusion Manager

Phone: 206-770-3520

Email: GlennRe@consultant.wsdot.wa.gov

Web: www.wsdot.wa.gov/projects/sr520bridge/about/DBE.htm

SR 520 Program budget

Legislative Cap	Total Funding	Total Spent	% Spent	Total Remaining
\$4.65b	\$4.51b	\$2.77b	62%	\$1.73b

BUDGET and EXPENDITURES by BIN	Legislative Budget 2019	Expenditures through June 2019	Remaining Budget
8BI1003: SR 520/Bridge Replacement and HOV (Nickel/TPA)	\$2,679.9 M	\$2,649.8 M	\$30.1 M
8BI1009: SR 520/Repayment of Sales Tax for Bridge Replacement	\$159.4 M	\$0.0 M	\$159.4 M
852006W: SR 520 Westside Design Development	\$24.0 M	\$24.0 M	\$0.0 M
M00400R: SR 520 Seattle Corridor Improvements - West End	\$1,643.3 M	\$103.6 M	\$1,539.7 M
Total	\$4,506.6 M	\$2,777.4 M	\$1,729.2 M

FUND SOURCES and USES	Legislative Budget 2019	Expenditures through June 2019	Remaining Budget
State Funding (primarily gas tax)	\$537.9 M	\$507.0 M	\$30.9 M
State Funding (Connecting Washington Account)	\$1,642.5 M	\$103.6 M	\$1,538.9 M
SR 520 Account (tolling and future federal funding)*	\$1,668.7 M	\$1,668.7 M	\$0.0 M
Federal TIFIA loan	\$300.0 M	\$300.0 M	\$0.0 M
Other federal funding	\$198.1 M	\$198.1 M	\$0.0 M
Deferred sales tax**	\$159.4 M	\$0.0 M	\$159.4 M
Total	\$4,506.6 M	\$2,777.4 M	\$1,729.2 M

Questions?

For additional information on the SR 520 Program,
please contact:

Denise Cieri, SR 520 Program Administrator
(206) 770-3591 or CieriD@wsdot.wa.gov

