



Washington State Legislature Joint Transportation Committee

Transportation Equity in Washington Cities

Stefanie Brodie, PhD | Research Practice Lead

Project Summary Presentation
December 15, 2022

Agenda

- Project Goals
- Project Tasks
- Project Deliverables
- Next Steps

Project Goals

- Educate city and state officials on current and historical transportation investments on designated populations
- Describe tools and methods used to assess transportation equity
- Provide recommendations on tools and best practices to improve, diversify, and expand city transportation investments towards more equitable outcomes

Project Timeline

TASKS	2022							2023				
	5	6	7	8	9	10	11	12	1	2	3	4
1: Assess and Describe Impacts of Transportation Investment Patterns on Designated Populations					■							
2: Describe Transportation Equity Assessment Tools and Methods					■							
3: Describe Best Practices for Equitable Distribution of Transportation Benefits and Impacts						■						
4: Coordinate with Staff Workgroup				■		■		■				
5: Presentations						■		■	■	■		
6: Draft and Final Reports								■				
Work Group Meetings (suggested schedule)				■		■		■				
House and Senate Transportation Committees (suggested schedule)									■	■		

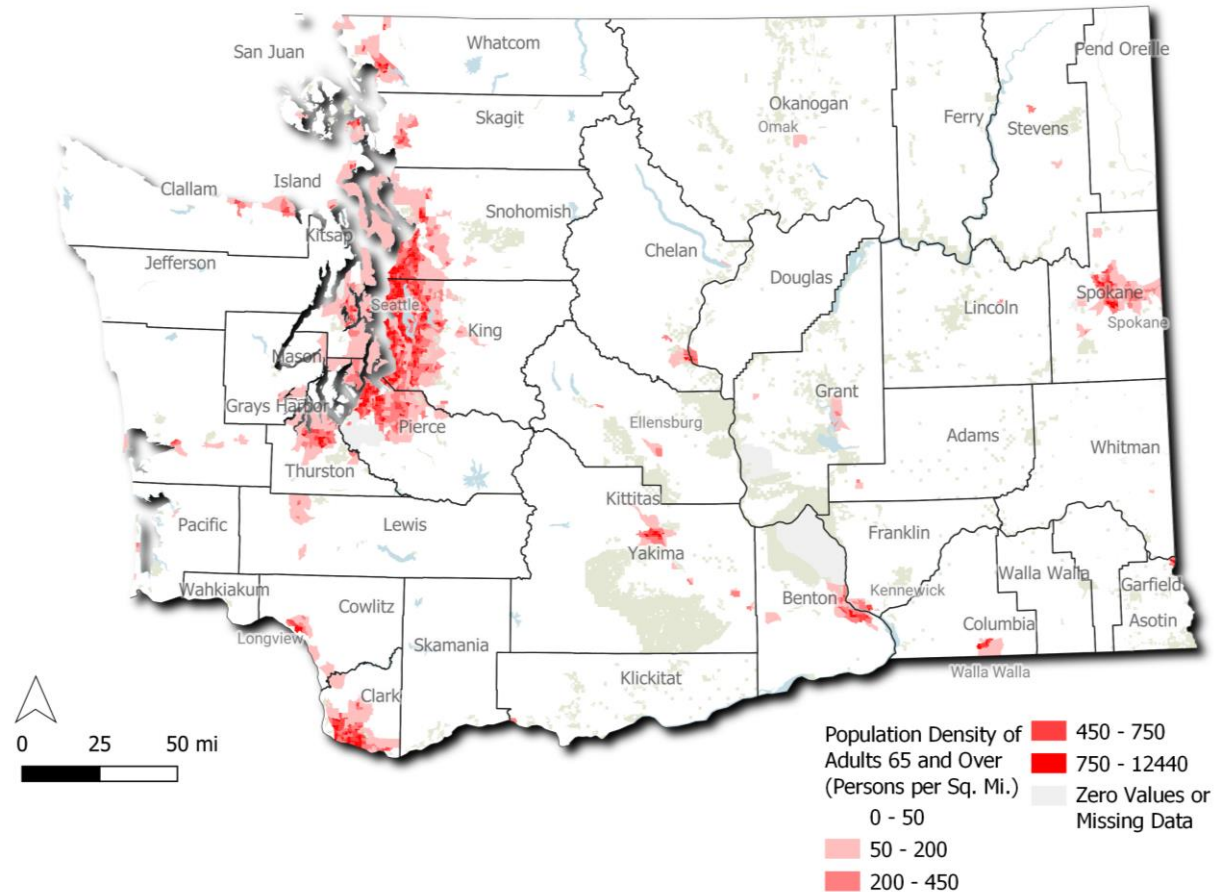
LEGEND

- Deliverable
- Presentation

Task 1 Deliverables

Project Goal 1: Educate city and state officials on current and historical transportation investments on designated populations

- Impacts of Transportation Investment Patterns on Designated Populations
 - Plan and policy review
 - Designated populations
- Racism in policies and practice
- Demographic mapping



Plan and Policy Review

- Cross-sectoral, integrated solutions are needed
- Maturity of equity planning
- Moving from words to action
- Resource limitations

Task 2 Deliverable

Project Goal 2: Describe tools and methods used to assess transportation equity

- Transportation Equity Assessment Tools and Methods
 - Tools and methods synthesis
 - Limitations and data gaps
- Catalog of tools and methods

TOOLS AND METHODS FOR ASSESSING EQUITY

Click on the name of the tool to be directed to more information on categories, factors, and data sources that inform the tool.

Name of Tool	Credit	Location of	Scale of	Use	Introduction to the Tool
1 National Equity Atlas	PolicyLink and USC Equity Research Institute (ERI)	USA	Nation, State, Region, County, City	Identifying equity seeking communities and vulnerable areas	The National Equity Atlas is a "report card on racial and economic equity." It aims to equip policy makers with data that is actionable and to provide strategies to advance racial equity and shared prosperity. It is categorized by indicators organized into four groups: Demographics, Economic Vitality, Readiness, Connectedness and Economic Benefits.
2 Environmental Justice (EJ) Screen	United States Environmental Protection Agency (EPA)	USA	National	Identifying equity seeking communities and vulnerable areas	EJ Screen is an environmental justice mapping and screening tool. It uses nationally consistent data and an approach combining environmental and demographic indicators to produce maps and reports.
3 Mapping Inequality (Redlining Maps)	University of Richmond, Virginia Tech, University of Maryland, and Johns Hopkins University	USA	HOLC Areas	Identifying equity seeking communities and vulnerable areas	Four universities created an interactive map that georeferenced the Home Owners' Loan Corporation (HOLC) 1930s Redlining Maps, which evaluated mortgage lending "risk" and represented denied access to capital investment based on race, onto today's geography. This tool can be used alongside other indicators to investigate the links between historically redlined areas, race and other demographics, and social and environmental inequity.
4 Racial Equity Toolkit	Local and Regional Government Alliance on Race & Equity (GARE)	USA	Various	Assessing practices and policies and potential outcomes	The Racial Equity Tool is designed to integrate explicit consideration of racial equity in decisions, including policies, practices, programs, and budgets. It aims to help develop strategies and actions that reduce racial inequities and improve success for all groups. The toolkit is a set of questions and an assessment worksheet, along with a critical analysis of the quantity and quality of data used for equity analysis.
5 Equitable Development Principles & Scorecard	The Alliance - Twin Cities Region	USA	Various	Assessing practices and policies and potential outcomes	This tool is aimed at developers and inquires how development can repair past harms and contribute to a stronger, more inclusive and thriving community. The tool provides a framework to reclaim power and to guide development toward becoming an integral piece of a collective commitment to create wealth, opportunity and stability for historically and systemically marginalized communities. The tool is unlike indices and map tools; it is a checklist that can be used to evaluate the equity of projects, not geographic locations and communities.
6 Race Matters: Organizational Self-Assessment	Annie E. Casey Foundation	USA	Internal	Assessing practices and policies and potential outcomes	Race Matters developed a set of questions to raise awareness and change regarding racial equity within organizations. It is for internal relations within an organization rather than for a city or community.
7 Developing Policy with an Equity Lens	Green Justice Coalition	USA	Various	Assessing practices and policies and potential outcomes	This tool was built in order to build capacity for "grass-top" organizations to do equity work on their own and to relieve pressure on Green Justice Coalition who were often being asked to do these equity analyses. This tool aims to center the voices of People of Color and low-income people and their communities.
8 Washington Environmental Health Disparities Map	Washington Department of Health	WA	Census Tract	Identifying equity seeking communities and vulnerable areas	The Washington Environmental Health Disparities Map is a web tool to use interactive mapping to compare communities across Washington State for environmental health disparities. Indicators pertain to risk, including threat (environmental exposure) and vulnerability (socioeconomic factors).
9 King County Equity Impact Awareness Tool	King County, WA	King County, WA	Health Reporting Area (HRA)	Identifying equity seeking communities and vulnerable areas	Developed to assess communities' vulnerability to COVID-19 in terms of physical and economic health. This tool was used in deciding the locations of COVID-19 testing and vaccination sites.
10 Social Equity Mapping Tool	Spokane Regional Transportation Council	Spokane County, WA	Census Tract	Evaluating impacts and disparities	The Social Equity Tool is an interactive tool that shows where in Spokane county where communities who do not have adequate access to education and employment opportunities are located.
11 PSRC Opportunity Index	Puget Sound Regional Council	Puget Sound, WA	Census Tract	Evaluating impacts and disparities	The Opportunity Index represents a comprehensive index of five elements of neighborhood opportunity and positive life outcomes including education, economic health, housing and neighborhood quality, mobility and transportation, and health and environment. Census tracts are sorted into quintiles (very low, low, moderate, high, very high), based on their index.
12 Tacoma Equity Index	City of Tacoma, WA	Pierce County, WA	Census Tract	Evaluating impacts and disparities	Tacoma's Equity Index is an interactive tool that visually highlights disparities using 29 data points sorted into five determinant categories to delineate areas where community members are not able to access services or where services do not meet community needs. It is one of the primary tools that City staff, partners, and other decision makers use to help ensure they are making data-informed decisions to improve access to opportunity for all community members.
13 Equity Impact Review Process, King County, WA	King County, WA	King County, WA	Various	Assessing practices and policies and potential outcomes	The Equity Impact Review process uses qualitative data and qualitative community engagement findings to inform planning, decision-making and implementation of actions that affect equity in King County. It aims to ensure equity impacts are rigorously and holistically considered and advanced in the design and implementation of proposed actions (plans, policies, programs, and projects).
14 City of Oakland Racial Equity Impact Analysis	City of Oakland, CA	Oakland, CA	Various	Assessing practices and policies and potential outcomes	The Racial Equity Impact Analysis is a template developed by that Office of Race and Equity to embed racial equity in the City of Oakland's decisions and policies with the goal of facilitating an environment where everyone has access to the opportunities necessary to meet their essential needs, advance their well-being and achieve their full potential.
15 LA Metro Rapid Equity Assessment	City of Los Angeles, CA	Los Angeles, CA	Various	Assessing practices and policies and potential outcomes	The Rapid Equity Assessment tool is a set of questions to assist Metro staff in identifying and prioritizing equity opportunities for project(s) that 1) will impact service, safety, or customer experience, 2) does not require another equity analysis, or 3) will result in a material project change.
16 Equity Priority Communities	Metropolitan Transportation Commission (MTC)	Bay Area, CA	Census Tract	Identifying equity seeking communities and vulnerable areas	Equity Priority Communities (formerly "Communities of Concern") is a mapping tool that identifies Bay Area communities that are or have been historically underserved. It based on eight demographic variables including household incomes and race. It is used to direct funding toward projects that enable more equitable access to transportation, housing, and services.

List of Tools and Measures

1 2 3 4 5 6 7 8 9 10 11 12 13 14 15 16 17 18 19 21 22 23 24 25 26



Task 3 Deliverable

Project Goal 3: Provide recommendations on tools and best practices to improve, diversify, and expand city transportation investments towards more equitable outcomes

- Best Practices for Equitable Distribution of Transportation Benefits and Impacts
 - Gap analysis
 - Best practices for equitable outcomes
 - Recommendations and examples

Gap Analysis



Defining Gaps

Planning within an equity framework

- Create vision, framework, or goals in planning documents
- Conduct quantitative analysis (mapping, prioritization)

Operating with an equity focus

- Apply equity considerations in projects, programs, or funding decisions
- Implementation of equity related plans or policies
- Systems created for accountability (community feedback, metrics)

Achieving equitable outcomes

- Proven positive outcome
- Use solutions outside of current system

Experiencing justice

- Address not only “streets” but the “socioeconomic, cultural, and discriminatory barriers to access and comfort different communities experience within public spaces

Defining Gaps - Focus Areas

- Disability Justice
- Trauma-informed Planning
- Decarceration
- Economic Justice
- System-wide Accountability
- Culture-Affirming
- Cross-disciplinary Planning
- Environmental Justice
- Critical Analysis

Task 4 Deliverables

- Engagement with Practitioners and Staff Workgroup
 - Synthesis of current condition interviews
 - Summary of Workgroup meetings

Workgroup Meetings

Workgroup Meeting on Tasks 1 & 2

- Prioritized demographic factors to identify designated populations
- Identified additional contacts for practitioner and researcher interviews
- Shared initial takeaways from Plan and Policy Review

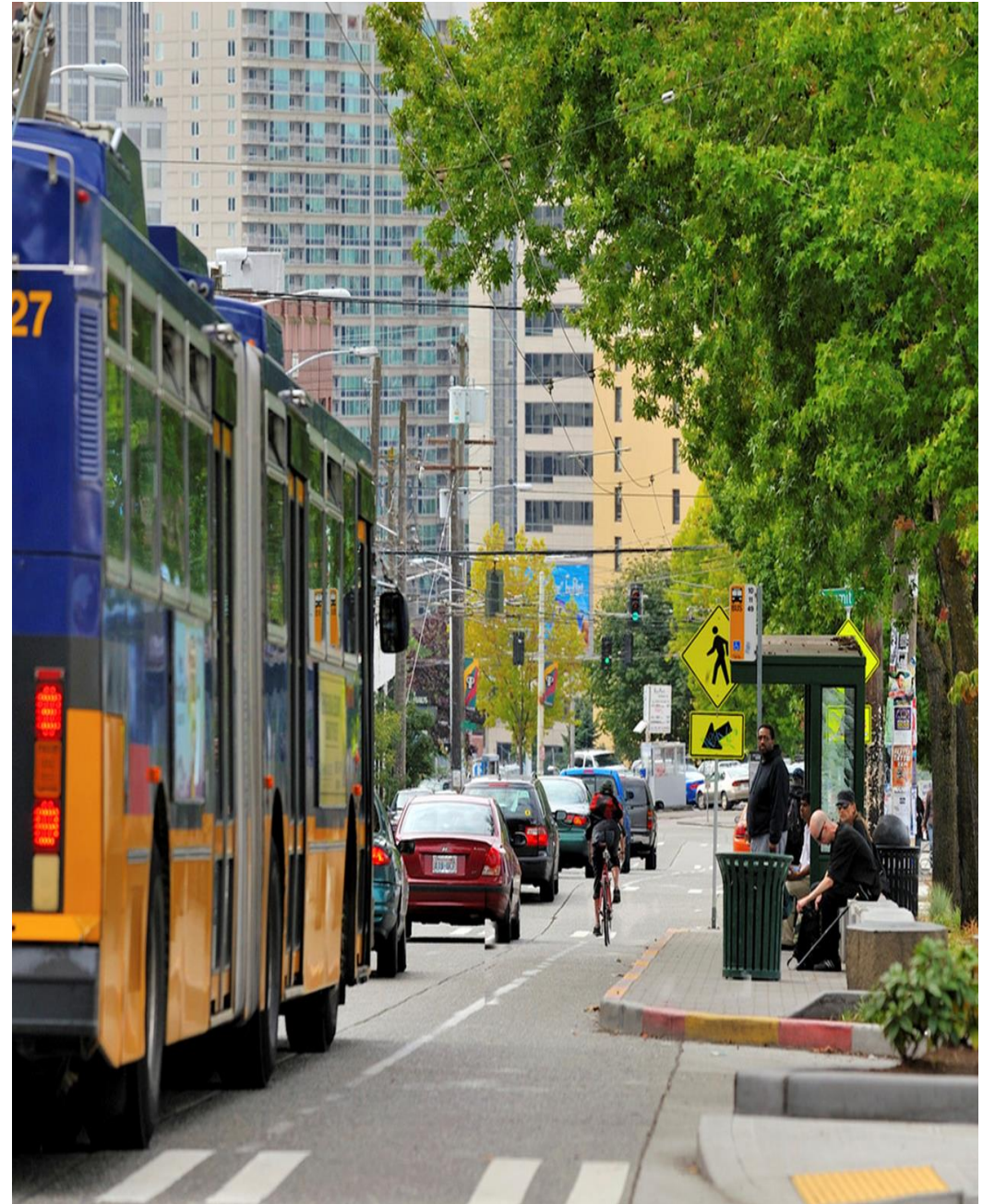
Workgroup Meeting on Task 3

- Introduced Dignity Infused Community Engagement
- Shared initial findings and focus areas
- Discussed right-sizing approaches

Workgroup Meetings

Workgroup Meeting on Project Products

- Presented draft deliverable for feedback
- Discussed potential applications of deliverables and approaches to ensure they become resources
- Shared initial best practice recommendations



Next Steps

- Draft Report – December 20, 2022
- Deliverables roll out with Equity Roundtable – February 2023