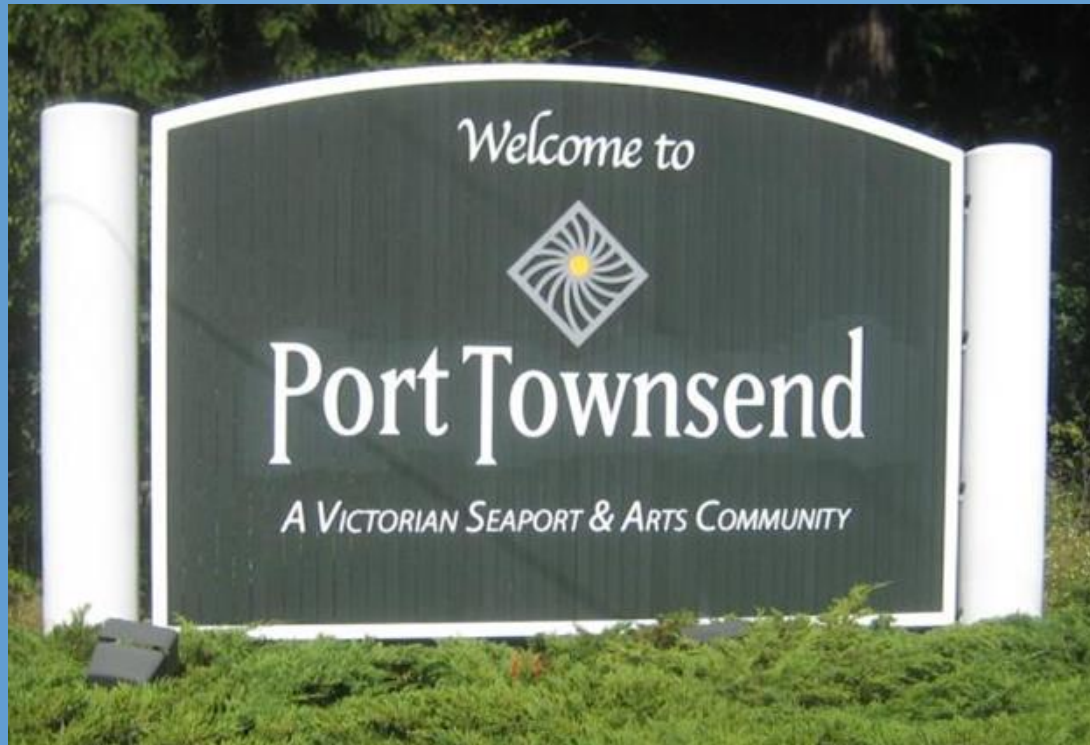


Transportation in a Small Community



2022 AWC Conference in Vancouver – Joint Transportation Committee
June 21, 2022
Steve King, PW Director



City of Port
Townsend

Fun Fact: Did you know
Port Townsend is located
on the nose of a Dragon?

Hood Canal
Bridge

Poulsbo

Introduction to Port Townsend



Kinetic Sculpture Race

Always trying something new and
having a little fun along the way!

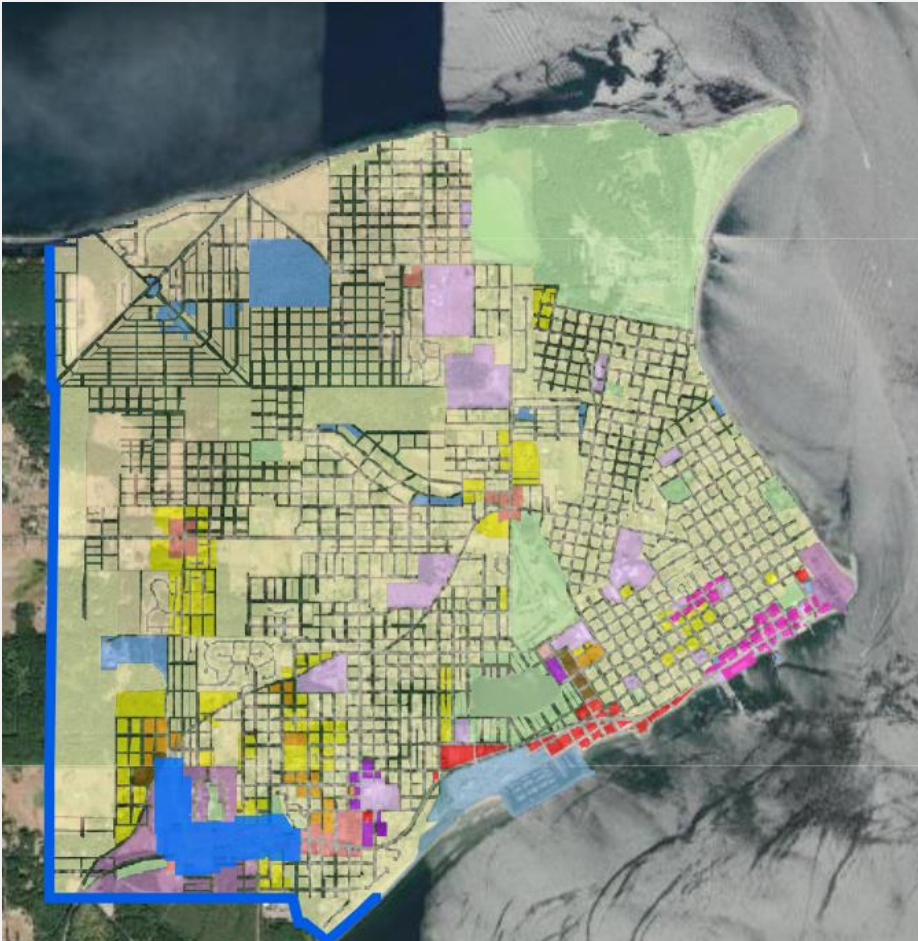
Statistics:

- Population = 10,000 +
- Median Age = 56 and rising
- Economy: Marine Trades, Tourism, Healthcare

Streets Statistics

- Miles of Street = 84
- Area = Approx. 7.0 sq. miles
- Streets Maintenance Budget = \$950k
- Streets Preservation Budget = \$0
- Streets Grant's Match Budget = Debt

Introduction to Port Townsend



Fun Fact:

Port Townsend's Urban Growth Area is coincident with the City Limits. The city was platted in the 1800's in anticipation of 25,000 people or more.

Presentation Goal: Share Three Key Transportation Focus Points

1. Equity
2. Regional Transportation System
3. Infrastructure Challenges in Port Townsend



Equity Concerns in Port Townsend

- Housing shortage and costs are working against our community, especially in the realm of transportation
- Age and Disability – Our aging population creates a disproportionate share of disabilities and needs for services

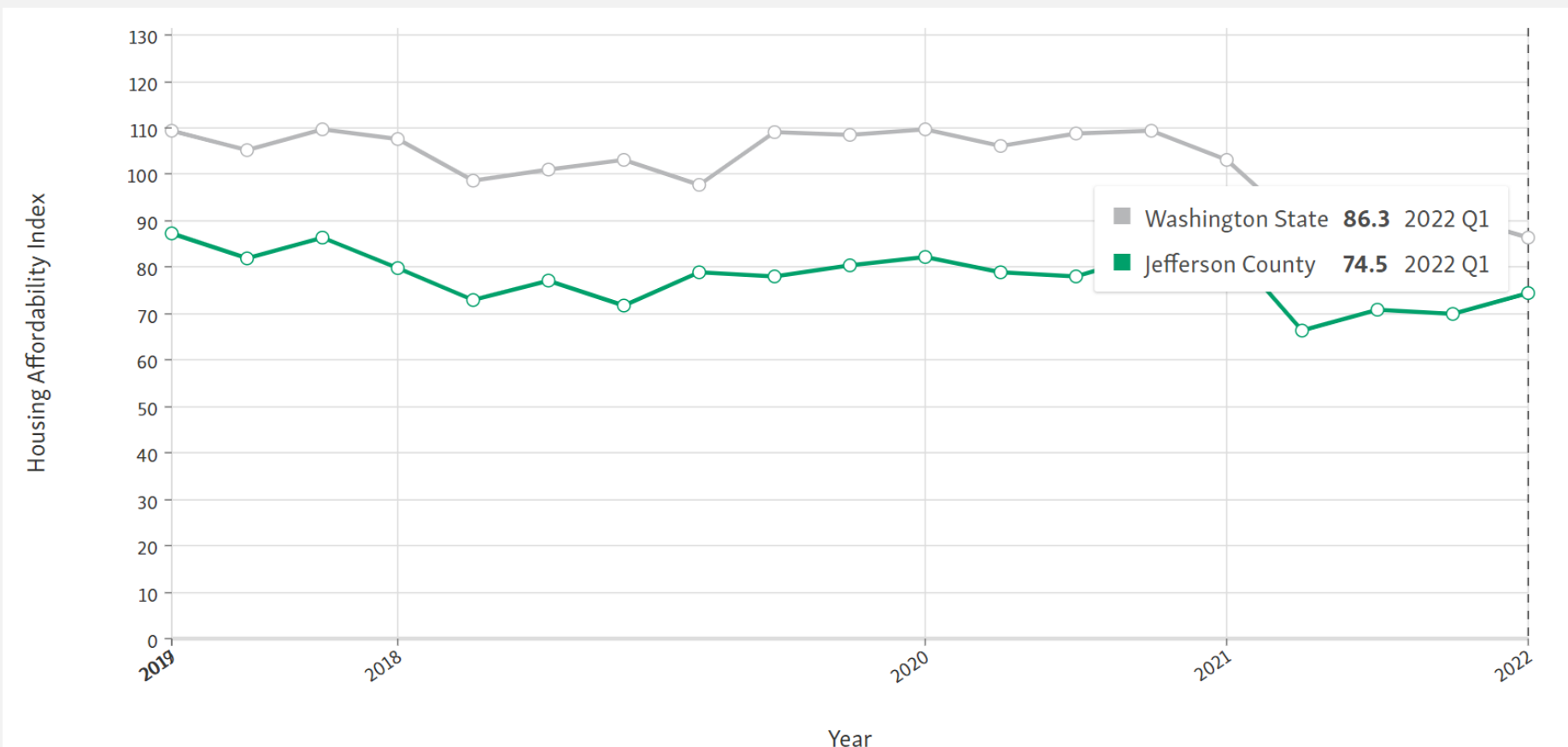


Housing affordability Index

Wash. St = 86.3

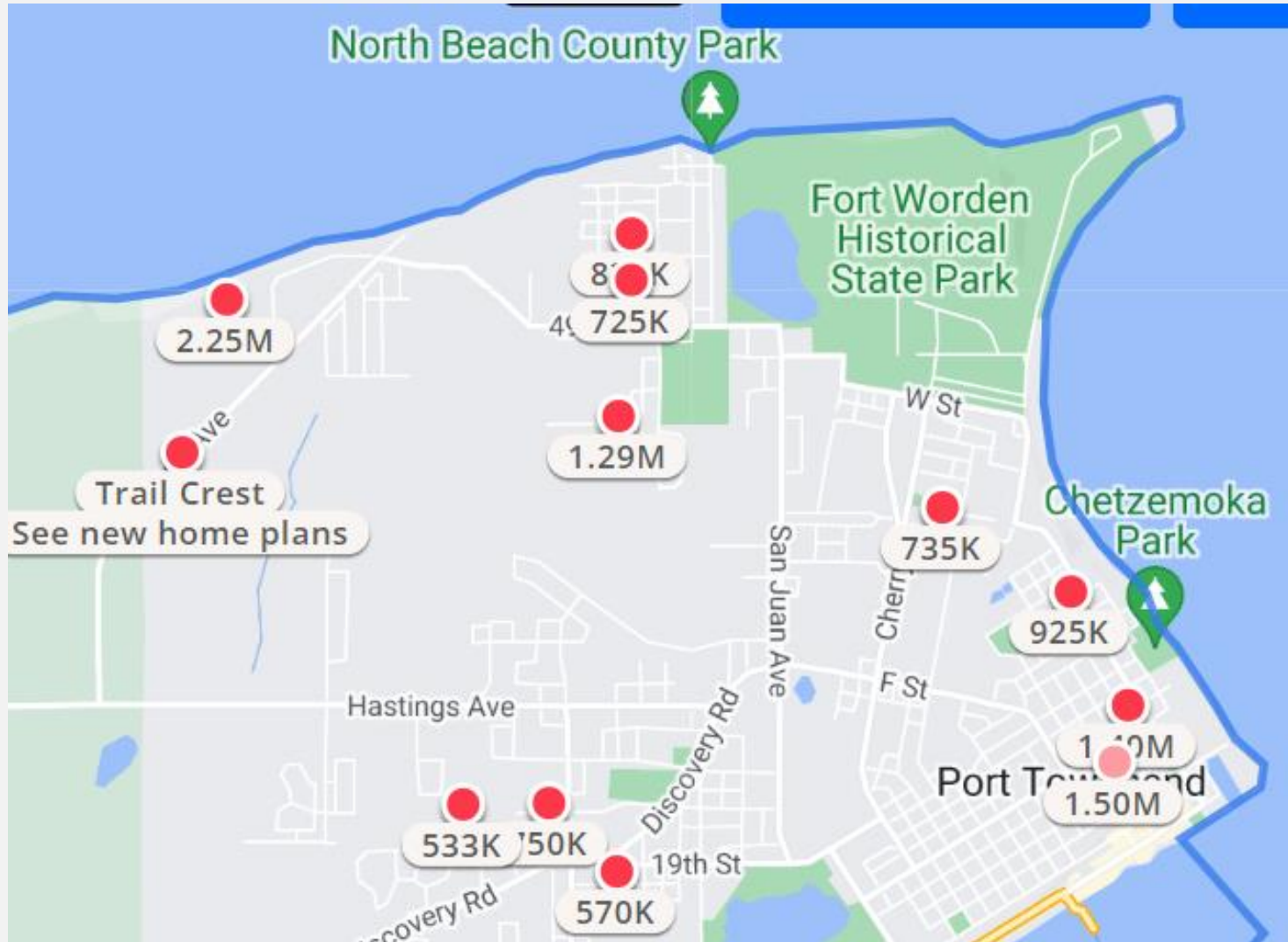
Jeff. Co. = 74.5

(100 being considered affordable)



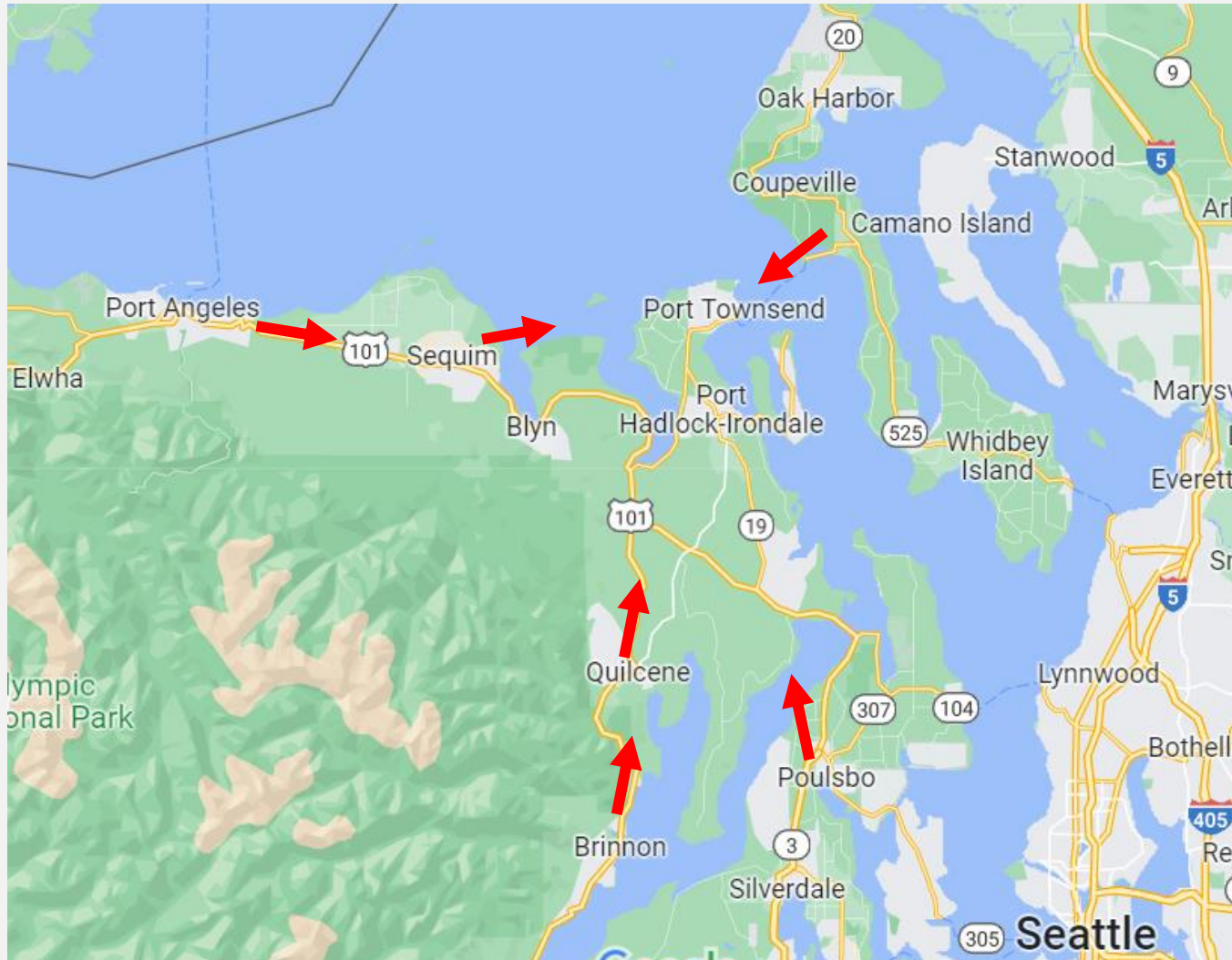
Source: AWB Institute

Housing Prices



Lack of supply: Houses on the market today

Commuting Challenges: Remember Small Communities



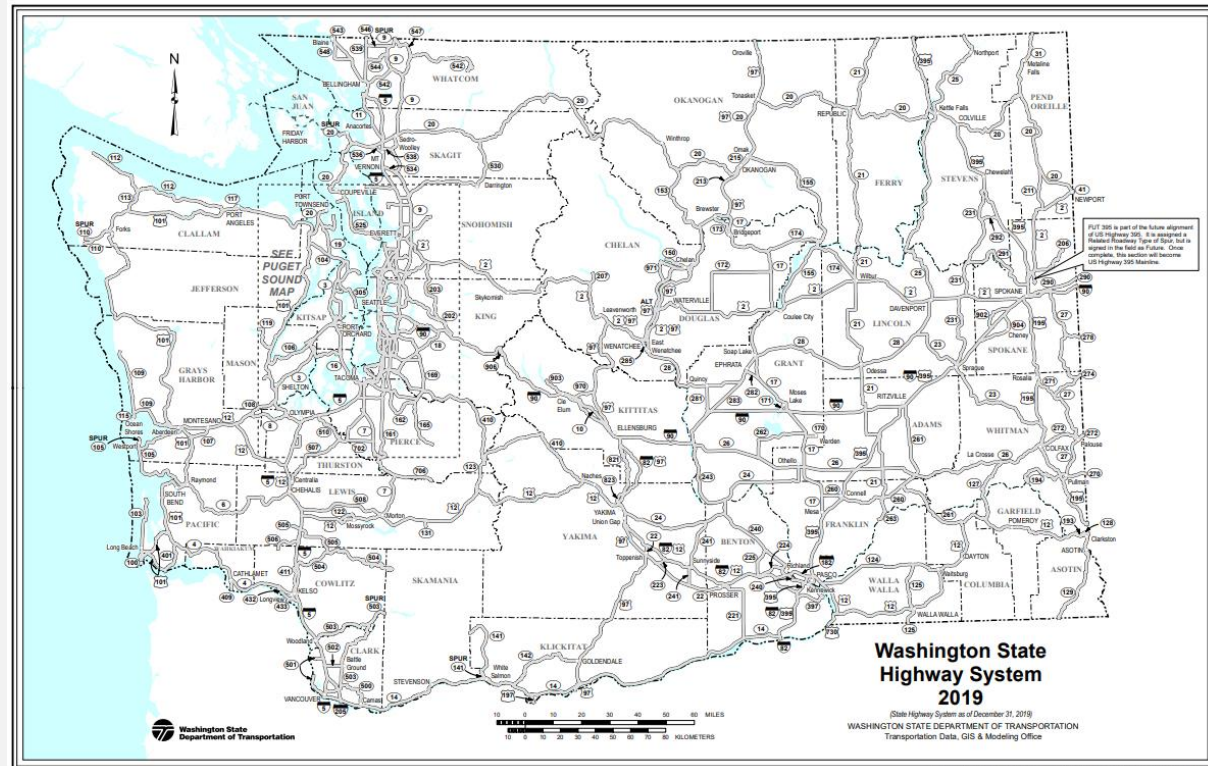
Aging Population and Disabilities



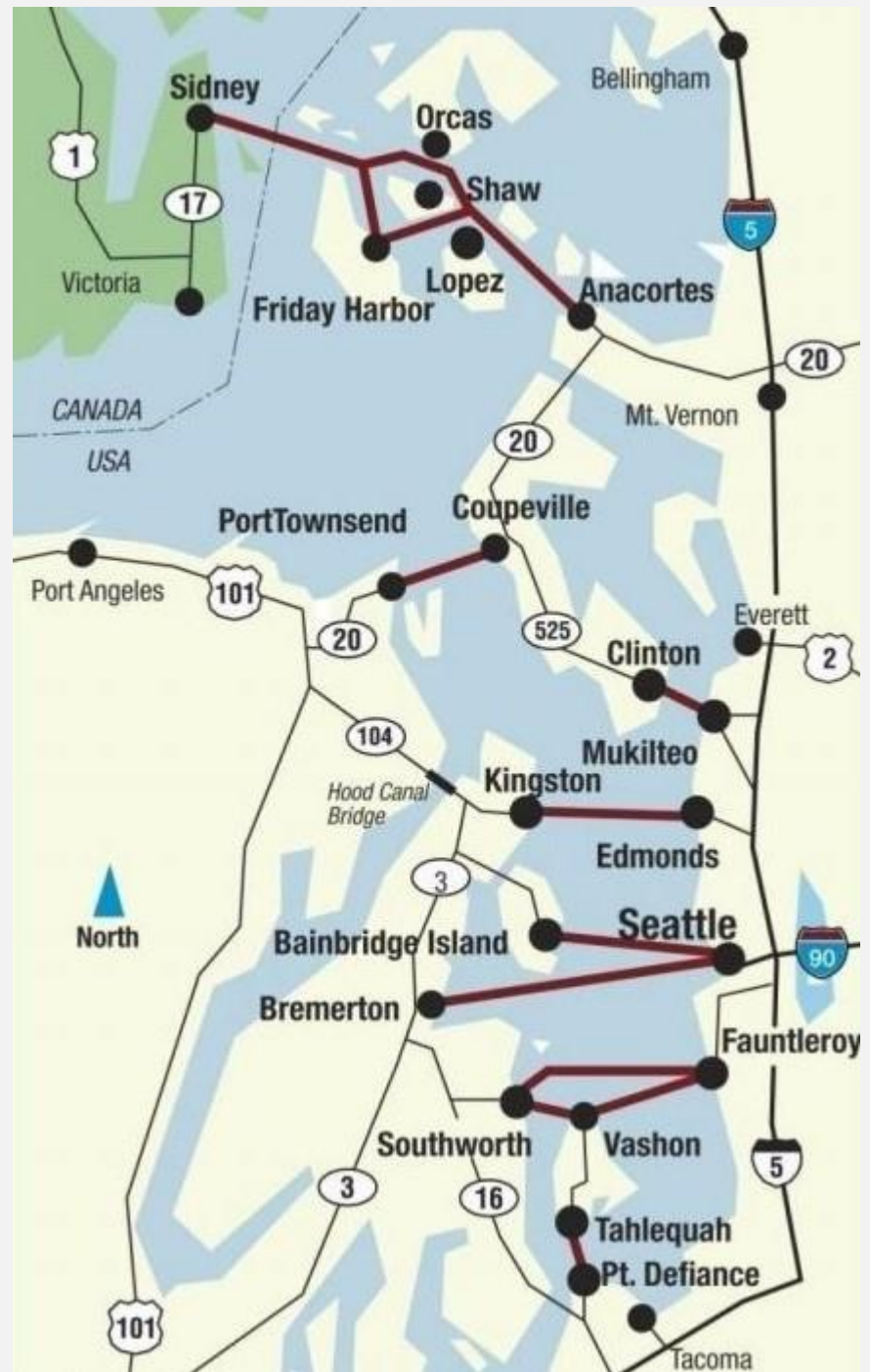
National Trend: Persons over 65 with a disability = 35% +/-
Macular degeneration is a primary concern of our local disability
advocacy group.

The North Olympic Peninsula Lives by the Regional Transportation System. Thank you!

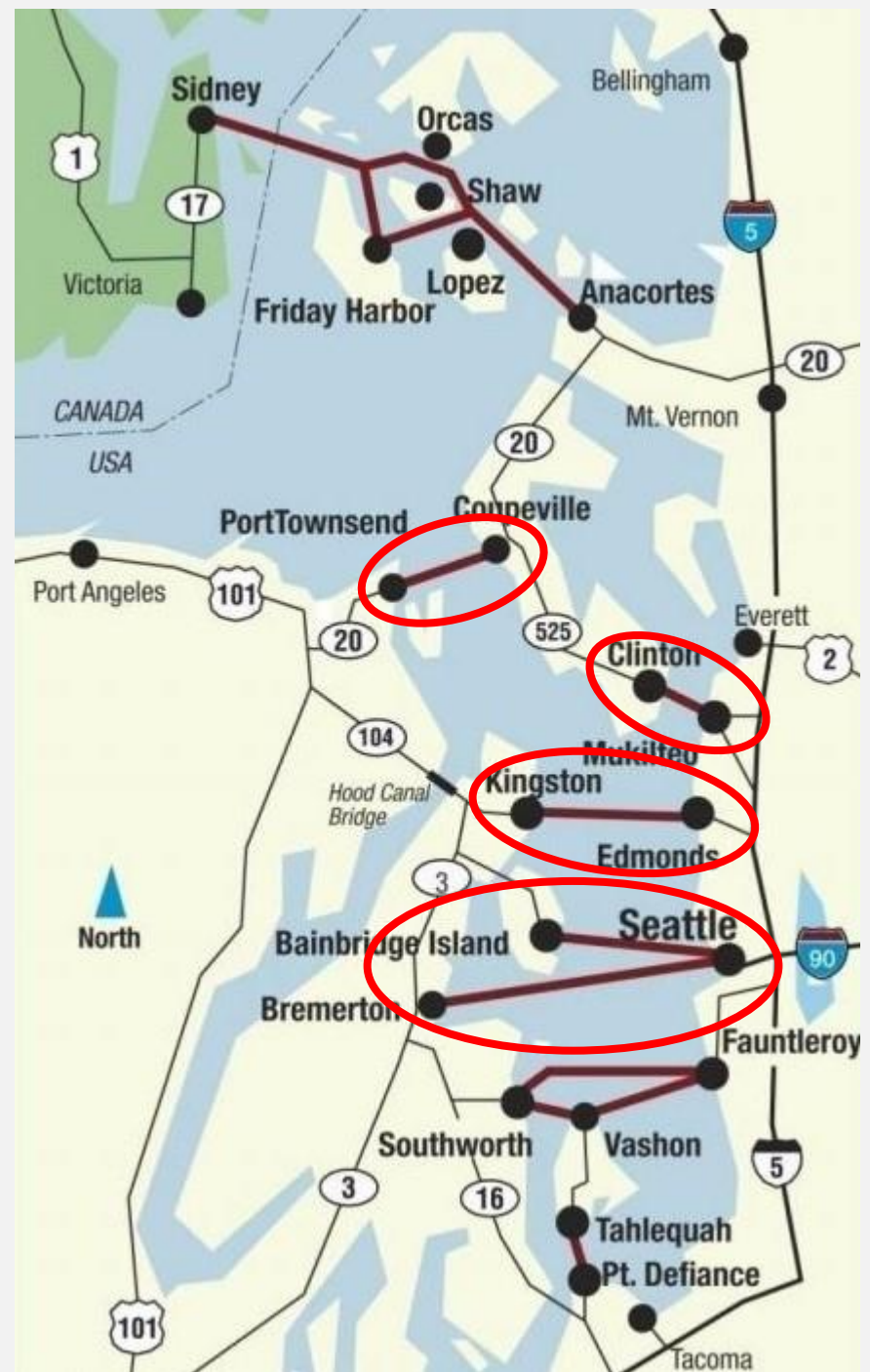
- Wash. St. Ferries
- State Route 104
- State Route 3
- Highway 101



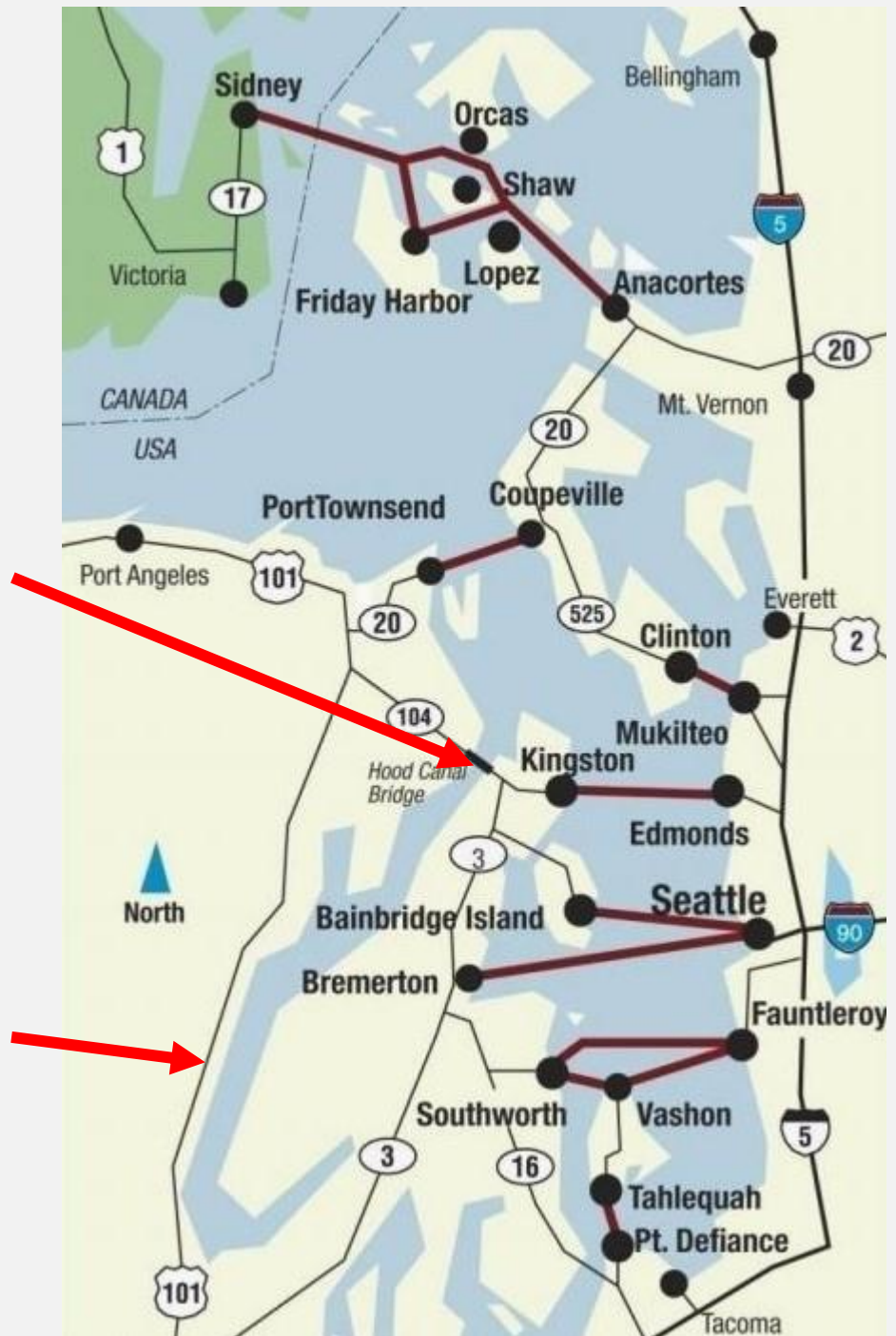
Washington State Ferry System



Five Ferry Routes Play a Role



The Hood Canal Bridge & Hwy 101

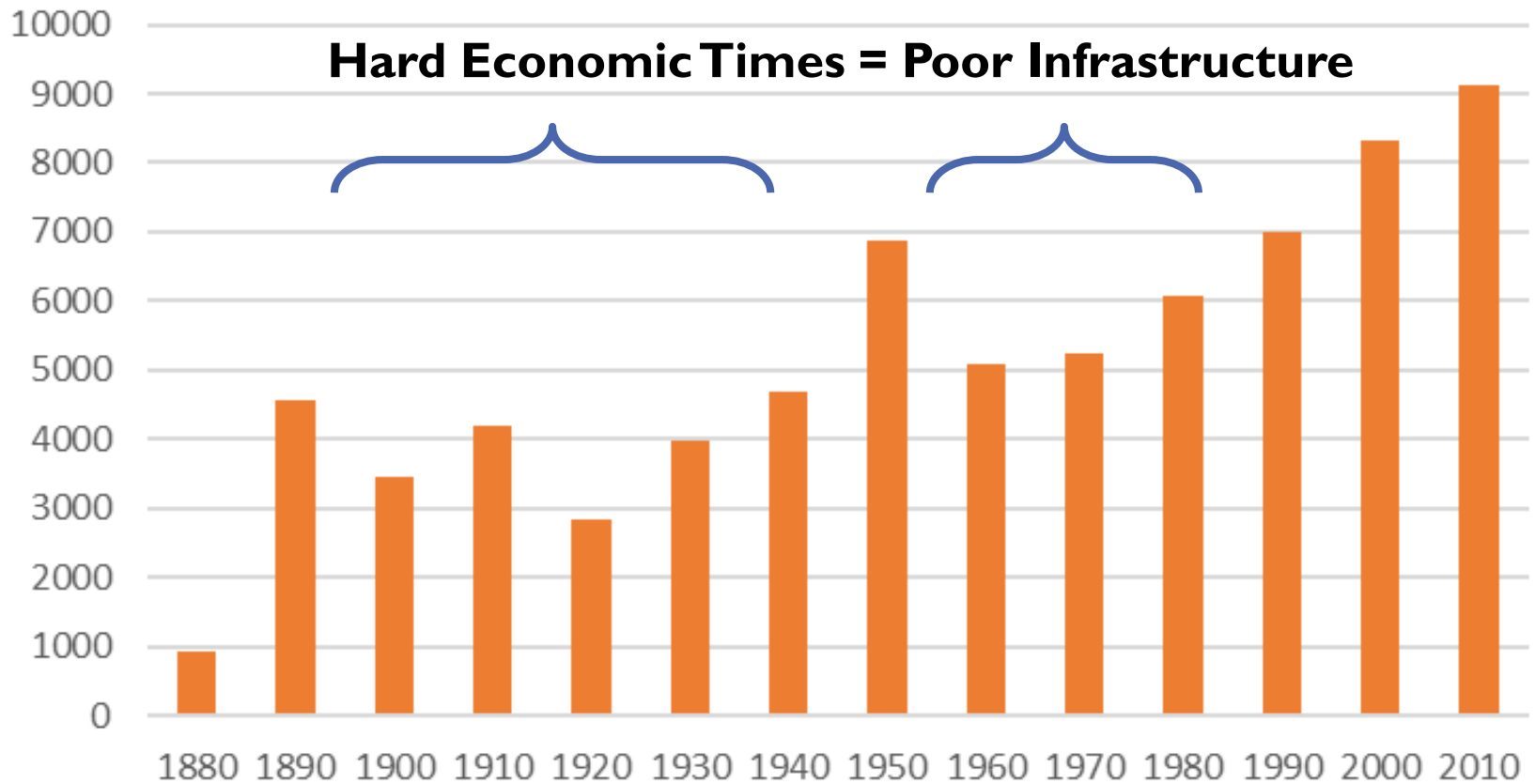


Infrastructure Challenges

Looking forward... What we do today matters... Just like what we did in the past is impacting us today.

Forced and Embraced Minimalism... Has our community accepted small streets without amenities in residential areas?

Port Townsend Population History



Economic Health Matters

Poor Infrastructure in the Past Haunts Us Today



Typical Port Townsend Local Access Street.
Most of our streets are chip seal over dirt, 12 to 20 ft wide.

Non-motorized Transportation



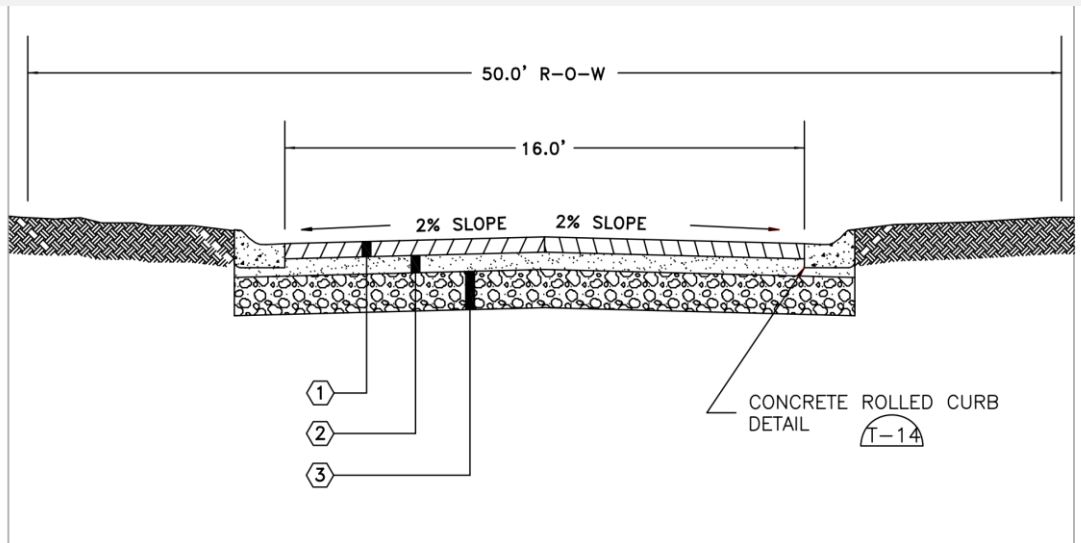
Extensive undeveloped right of way = 31 miles of trails connecting streets in a grid network. Pedestrians walk the streets and trails.

Typical Arterial Pavement Failure



One of our major arterials.... Stress cracks revealed the beginning of failure only two short years ago.

What Are We Doing? Small Streets and Changing Maintenance Practices



Keeping the character of Local Access Streets with a focus on transferring vegetation control to the adjoining property owner and fixing drainage problems.

What Are We Doing? Dark Sky Initiative



- Converted to LED street lights
- Removed lights
- Turned intensity down to 30% of Max
- Target 400 - 500 ft spacings

What Are We Doing? Testing Edge Lane Roads



What Are We Doing? Arterial Grants



Thank goodness for TIB/STBG/HSIP, etc grants!

What Are We Doing? Asking the Public & Developing a Program

COMPREHENSIVE STREETS PROGRAM

What do you want for your streets? How do we best preserve, improve, operate and program our streets sustainably into the distant future?

Funding goal: Increase local street investments by \$1 million per year for preservation, grant match, complete streets, and non-motorized improvements :

Probable Sources: TBD (Sales Tax), Property Tax, REET, and Impact fees



Questions

Contact Information:

City of Port Townsend

Steve King, Public Works Director

sking@cityofpt.us

360-379-5090