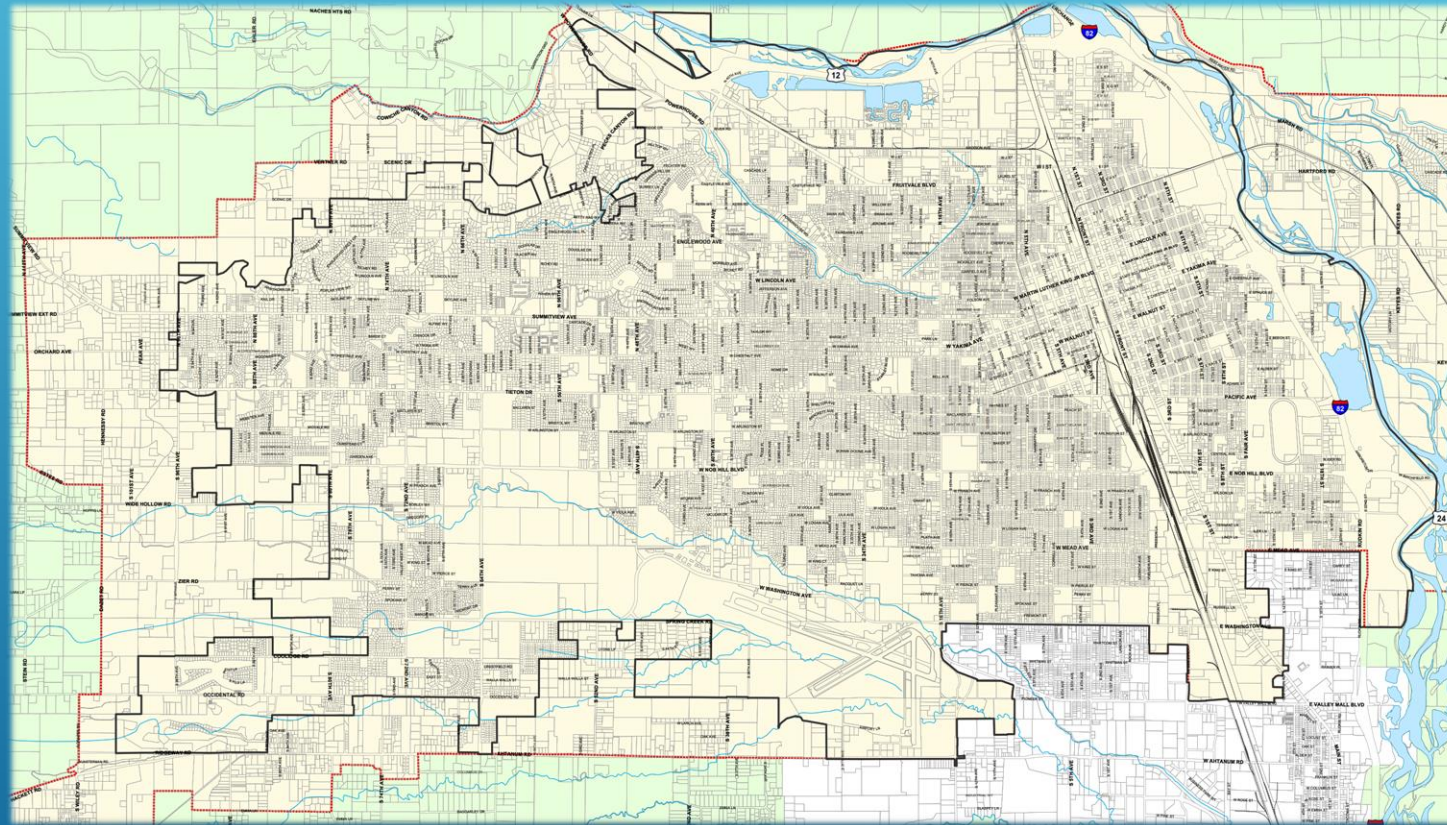


MITIGATING CHALLENGES

City of Yakima
City Engineer: Bill Preston



Joint Transportation Committee

June 21, 2022



Mitigating Challenges

Staffing

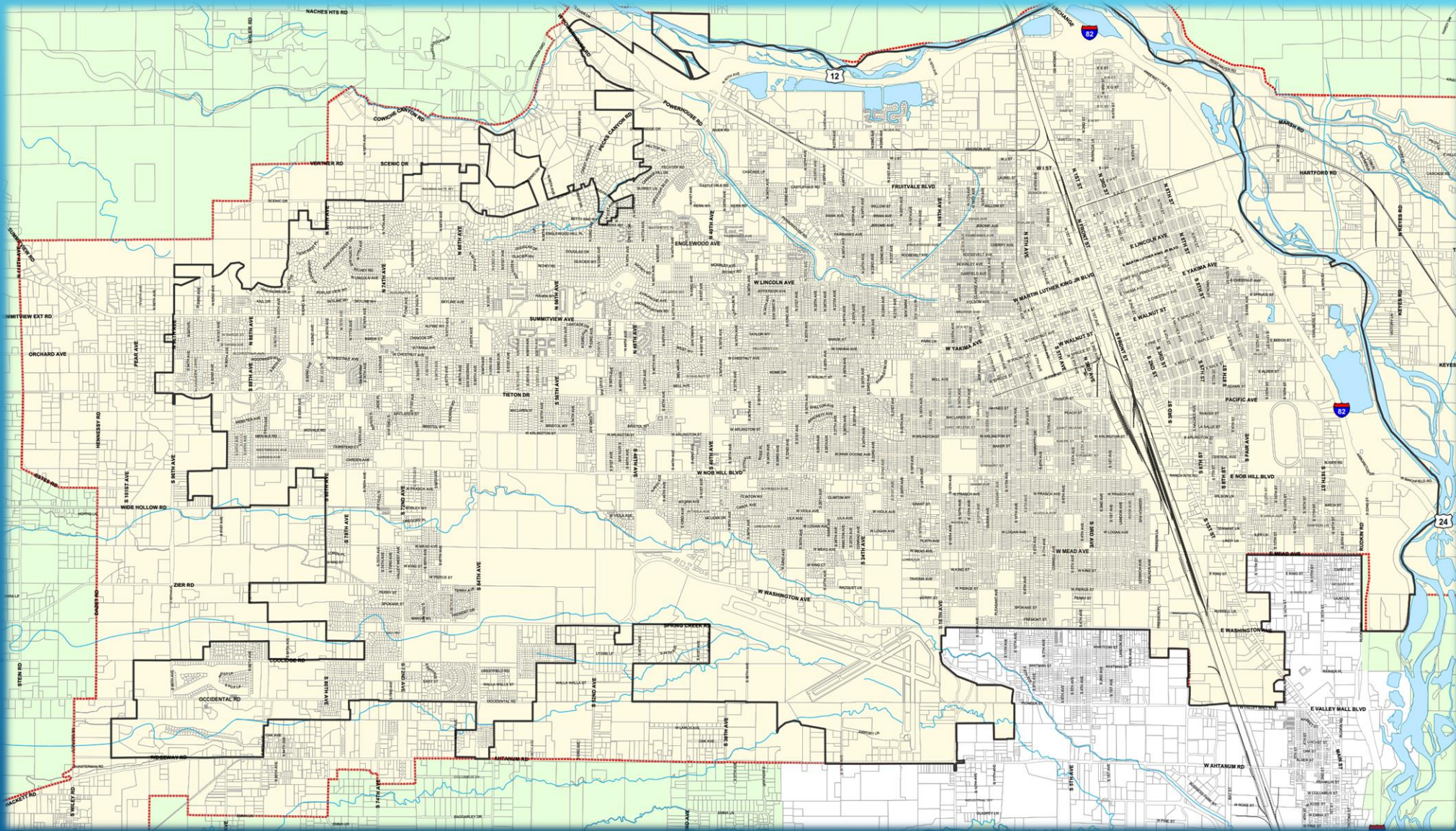
Inflation

Supply chain

Funding



City of Yakima



City of Yakima

Population ~ 100,000

400+ miles of road

12 bridges

115 signalized intersections

28.25 sq mi

City Engineer

1 Senior Engineer

1 Contract Specialist

3 Construction inspectors

Traffic Engineer

2 Vacancies



Staffing

Challenge

Baby Boomer retirement 2010 - 2030
Gen X and Millennials needed to fill vacancies
Job Descriptions don't match workforce
Workforce expectations
Salary
Response times

Mitigation

Consultants
Agency partners



Inflation

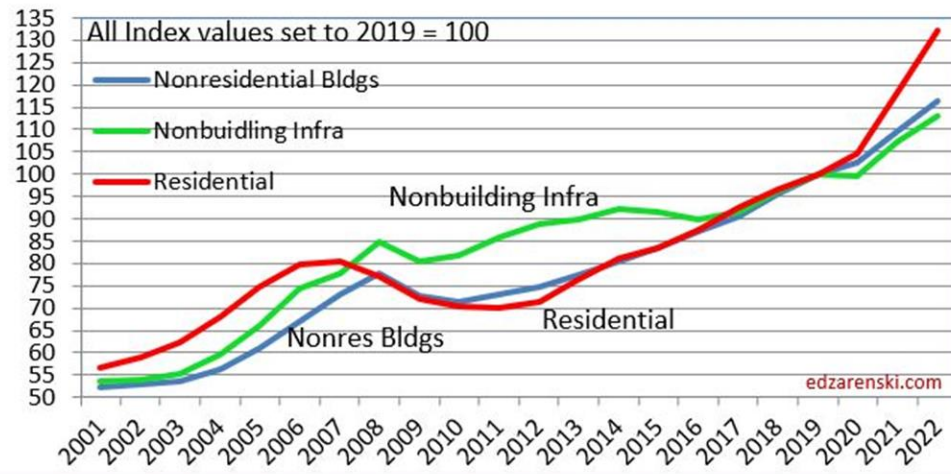
Challenge

Current design estimates are obsolete
Bid estimates more uncertain
Match dollars more difficult

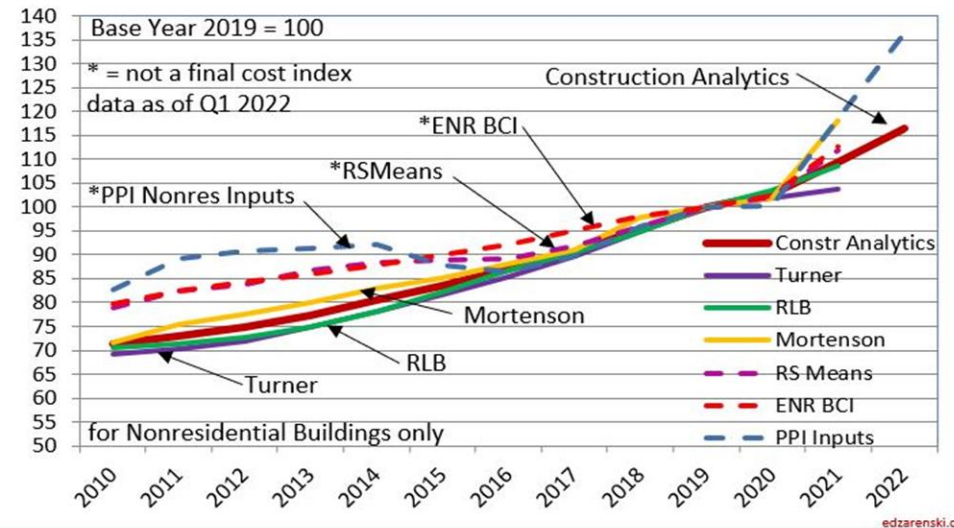
Mitigation

Increasing contingency (all phases)
Adding escalation clause
WSDOT Local Programs help

Construction Analytics Building Cost Index
Construction Inflation



Construction Building Cost Indices



Supply Chain

Challenge

Shortage of key materials

Reduced number of bidders (all phases)

DBE availability

Mitigation

Adding escalation clause

Early procurement contracts

Flexible working days/change orders

Stage my projects



Supply Chain

	Original	New		
	Estimate	Estimate	Bidders	
72nd Ave RAB	\$800	\$2,000		
McCLure Sidewalk	\$390	\$480	1	
Summitview Ave Paver	\$2,100	\$2,600		
N 1st Phase 3	\$12,000	\$13,600		Procurement
34th & Fruitvale	\$1,000	\$2,300	1 (PE)	
N 1st Phase 2				+6 mo ped poles
Spring Creek				+6 mo signal
In Thousands				



NHPP

Complete Streets

HSIP

STBG

HIP

Bridge

ARPA

DOE Grants

CWA

TIGER

City Enterprise Funds

TAP

City Safety

INFRA

Funding

Bonds

SRTS/BP

City Gas Tax

MEGA

BUILD

WSTC

RAISE

TBD

LIFT

SS4A

NHFP

SIED

TIB

Legislative Appropriation

FTA

NHS

Public Works Loans

CMAAQ



Overcoming Challenges

Challenges

Staffing

Inflation

Supply chain

Funding

Mitigation

Consultants

Escalation clause/procurement

WSDOT LP assistance

Flexibility in administration

Consultants

