



**Washington State Legislature**  
Aging & Disability  
Joint Legislative Executive Committee

**“Use of Technology to help people maintain independence”**

Scott Peifer, Executive Director  
AgeTech West

September 15, 2014



HOME

ABOUT US

NEWS & INFO

LEADERSHIP

EVENTS

POLICY

PROVIDER  
RESOURCES

TECHNOLOGY  
COMPANIES

PARTNERS



## WELCOME TO AGETECH WEST

AgeTech West advances the delivery of tech-enabled aging and home care services on the West Coast to reach a new standard of person-centered care. Technologies such as care coordination and point-of-care technologies, electronic health records, activity/health vitals monitoring, medication management, emergency response, cognitive fitness and "therapeutainment" can enable greater independence and wellness, higher quality of care & service, successful management of chronic disease, early detection of illness, and prevention of hospitalizations while enhancing caregiving and cost efficiency.

### FEATURED RESOURCES

Click on [Provider Resources](#) to read the "Link-age Connect & AgeTech West Senior Social Media Survey Report."



## Announcements

**Expo: CALL FOR PRESENTATIONS**

**Save the Date!**  
**2014 AgeTech West Conference & Technology Expo, November 17-18, Seattle, WA.** *More details coming soon!*

Pitch for Pilots Pairings Announced and Pitch Video Released

**2014 AgeTech West Conference**  
**November 17-18**  
To Register for the Conference  
[Click Here](#)

**AgeTech west**  
Advancing a Technology-Enabled Standard of Care

**Sync In Seattle:**  
Transforming the Aging Services Experience

AgeTech West is heading to Seattle for the  
2014 AgeTech West Technology Conference & Expo.

Scott Peifer,  
Executive Director

**LeadingAge™**  
California

**LeadingAge™**  
Oregon

**LeadingAge™**  
Washington

agetechwest.org

## 2013-14 AgeTech West/Aging2.0 “Pitch-for-Pilots”



## Trends in Seniors' Internet, Social Media Usage



**2013 Survey by Link-Age  
Connect and AgeTech West  
re-field of Pew Research**

- 1,778 65+ senior housing residents responded
- 67% are online (n=1,187)
- 35% of those online are using social media
- 50% of online users between the ages of 65 and 75 use social media
- Of those online, nearly half (48%) of 70-74 year olds use social media, 38% of 80-84 year olds, and more than a quarter (28%) of 96-99 year olds!





# “Connected Independence” Tech



 Healthsense®



 **INDEPENDA™**  
*Redefining Independence™*

BLINKING COMPARTMENT    SOUND    PHONE CALL    MEDICAL ALERT    TEXT MESSAGE    EMAIL    ONLINE REPORTS



 **QUALCOMM LIFE**  
a Qualcomm company



 **PHILIPS**  
sense and simplicity

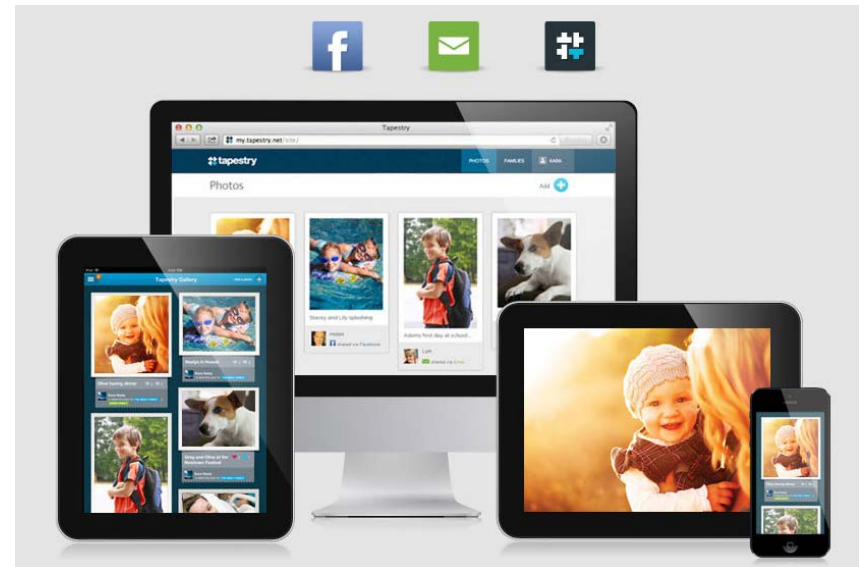


 **care innovations™**  
an Intel • GE company

jibo



HR  
HOALOHA  
ROBOTICS



tapestry

# Personal Emergency Response Systems (PERS) "2.0 and 3.0"



AT&T EverThere™



Live!



MobileHelp  
The Anywhere Help Button™





care innovations  
an Intel • GE company

# Medication Reminders/Dispensers



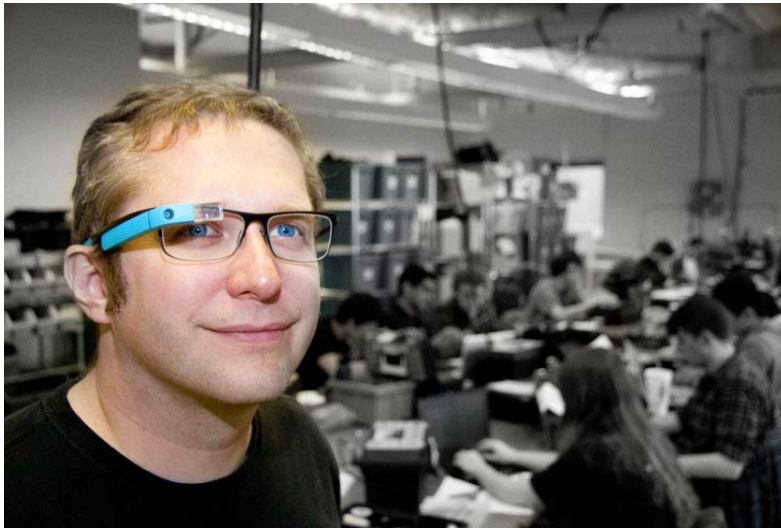
**PHILIPS**  
**Lifeline**



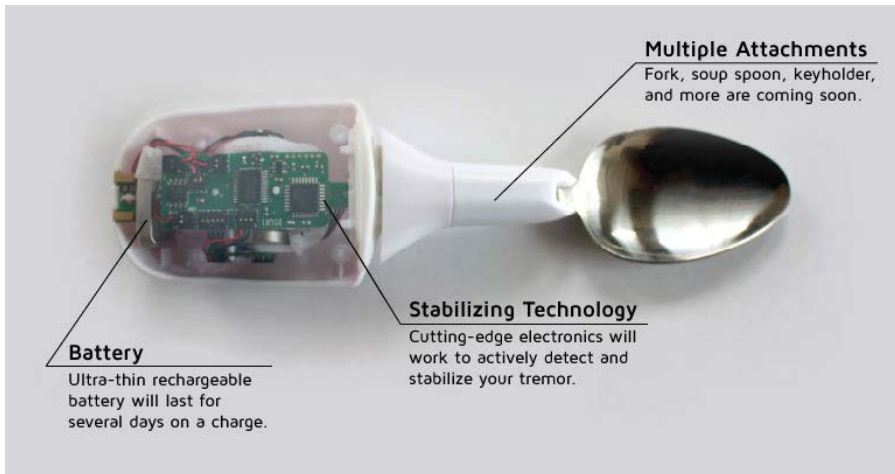
**MedMinder**



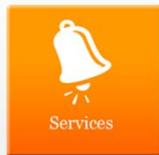
*Hello this is the emergency monitoring center. Is everything Okay?*



# Google™



# LIFT labs








**Honeywell**  
**HomMed**






- Video Consultation
  - SNF/ AL/ Home Health  Medical Dir/ PCP/ ER/ Specialist
- Store and Forward
  - Capture and later analysis of digital images, videos, etc. (e.g., wound care/derm, dental care, radiology, etc.)
- Remote Patient Monitoring (RPM)
  - Monitor health vitals to manage chronic conditions, post-acute discharge, prevention & wellness

## RespondWell



CATEGORY	WORKOUT	ENVIRONMENT	PATIENT PROFILE
<b>Falls Prevention</b>	Falls Prevention <span>x</span>		John Smith <span>x</span>
Senior Wellness	Strengthening exercises are essential for maintaining healthy bones and the muscles necessary for walking and being independent in your daily activities.	Fitness Center <span>x</span>	<b>MUSIC</b>
Pulmonary		Trainer 1 <span>x</span>	Samba Mix <span>x</span>
Orthopedic	DURATION: 35 MINS		<b>CHALLENGES</b>
Cardiac	RATING ★★★★★		<input checked="" type="checkbox"/> 25 min total
General Wellness			<input type="checkbox"/> 25 reps each
			<input checked="" type="checkbox"/> 20+ lbs
			<input type="checkbox"/> 5 min rest

**START**





**PointClickCare®**



CAST Vision Video:

**“High-Tech Aging: Improving Lives Today”**

<http://www.youtube.com/watch?v=0BYvyOSHmVQ>



## **Convergence of change impacting public policies:**

- New ways of providing care now available
- “Least restrictive setting of care” is evolving
- Elder and caregiver norms with technology use are shifting
- 15 million people today in U.S. need care assistance;  
30 million by 2050
- Shrinking supply of caregivers
- Escalating health care costs now and in foreseeable future

## So what?

- Public policies, regulations and programs designed to support older and disabled adults' independence must evolve to keep pace with these opportunities and imperatives
- Win-win: People enjoy prolonged independence and greater quality of life; state stretches financial and human resources



## Near-term:

- Enact enabling (non-fiscal) legislation to broaden the state's ability to leverage tech-enabled care, giving parity (not a mandate) in all state Medicaid and private plans and removing regulatory restrictions

California example: "Telehealth Advancement Act of 2011"

- New definition of telehealth refers to the general technology-enabled delivery of health services rather than a specific medical practice. This shift allows for a far broader range of eligible services than the old law, and includes future telehealth technologies in its definition.

*"Telehealth" means the mode of delivering health care services and public health via information and communication technologies to facilitate the diagnosis, consultation, treatment, education, care management, and self-management of a patient's health care while the patient is at the originating site [which can be at home] and the health care provider is at a distant site. Telehealth facilitates patient self-management and caregiver support for patients and includes synchronous interactions and asynchronous store and forward transfers." – California Business and Professions Code Sec. 2290.5*

- Allows all licensed healthcare professionals to use telehealth services
- Incorporate technology-enabled care provisions and preferences into healthcare reform initiatives (i.e., dual eligible care plan packages)

## Mid-term:

- Increase flexibility in state HCBS program allowable expenditures to support independence
  - Revise the Community Options Program Entry System (COPES) to include reimbursement for a more comprehensive set of tech-enabled care:

Pennsylvania example: “TeleCare Reimbursement”

Health Status Measuring & Monitoring	\$10/day
Activity & Sensor Monitoring	\$200/install \$79.95/mo.
Medication Dispensing & Monitoring	\$50/mo.
Personal Emergency Response Systems	\$30/mo.

## Mid-term:

- Revise WA Medicaid Home Telehealth program to:
  - Broaden the definition of eligible clients from those with an “unstable condition” to include those with “chronic health conditions” or remove eligibility restrictions altogether (other than eligibility for home health)
  - Remove restriction of eligible health professional (RNs or LPNs) to include all health professionals for services within scope of practice
  - Reimburse for “store-and-forward” telehealth for more efficient access to specialist expertise in wound care, orthopedics, dermatology, dentistry, etc.

## Long-term:

- Proactively evolve state policies and programs to incentivize care models that utilize available technologies that prolong independence while reducing social isolation and increasing quality of life
- Leverage care management technologies to coordinate systems of care across acute, post-acute, and wellness programs – enabling effective “care navigators”; require open-architecture (secured) by providers
- Provide individuals with true “least restrictive” options

**Scott Peifer**

*Executive Director*

**AgeTech West**

1315 I Street, Suite 100

Sacramento, CA 95814

[speifer@aging.org](mailto:speifer@aging.org)

[www.agetechwest.org](http://www.agetechwest.org)

**“SYNC IN SEATTLE: TRANSFORMING THE AGING SERVICES EXPERIENCE”**

NOVEMBER 17-18, 2014

SEATTLE, WA

[syncinseattle2014.com](http://syncinseattle2014.com)