

TANF/WorkFirst Program Measures

Table of Contents

As of 7/6/2012

A. Measures fully developed with available baseline data

<i>Kids Are Doing Well</i>	
Measure	Title
O1	TANF Children using Working Connections Childcare (WCCC) by Modality
O2	TANF Children Homelessness or at Risk
I01	Stability of Child Care Placement Modality
I02	Drug/Alcohol Treatment Received
I03	Mental Health Treatment Received
<i>Families Are Doing Well</i>	
Measure	Title
O3	Alcohol or Drug Need Address in Plan
O4	Mental Health Need Addressed in Plan
O5	Domestic Violence Addressed in Plan
O6	TANF Parents Homeless or at Risk of Homelessness
O7	Housing stability Addressed in Plan
O8	Non-Custodial Child Support
I04	Alcohol or Drug Treatment Received
I05	Mental Health Treatment Received
I06	TANF Families Receiving Concurrent Benefits
<i>Adults Are Doing Well Economically</i>	
Measure	Title
O9	TANF Adults Enrolled in Countable WorkFirst Activities (All Family & Two Parent)
O10	WF Program Engagement: High School/GED
O11	WF Program Engagement: English as a Second Language
O12	Education Pathway
O13	Basic Education Pathway
O14	Post-Secondary Education Pathway
O15	Skill Development
O16	Employment Search Pathway
O17	Work Preparation/Training Pathway
I07	Participation in Federal Countable Activities (WPR) (All Family & Two Parent)
I08	Exit to Employment
I09	Employment Rate After Exiting WorkFirst Services

B. Measures still under development with baseline data available later in 2012

<i>Kids Are Doing Well</i>	
Measure	Title
O18	TANF Youth who are Currently Enrolled in School
IO10	School Engagement
IO11	School Success
IO12	Graduation Rates
IO13	School Stability
IO14	Earnings
<i>Families Are Doing Well</i>	
Measure	Title
<i>Adults Are Doing Well Economically</i>	
Measure	Title
O19	Financial Literacy Skills
IO15	High School Completion
IO16	ESL Completion
IO17	Basic Ed. Completion
IO18	Post-Secondary Ed. Completion
IO19	Complete Job Prep/Skills Training

C. Developmental measures (Recommended)

<i>Kids Are Doing Well</i>	
Measure	Title
DO1	Parents understand importance of early childhood education in child development (parent
DO2	TANF children are using appropriate early childhood education programs
DO3	TANF parents are volunteering in child care and school
DO4	TANF children with developmental delays are flagged in TANF PRISM
DO5	Parents understand importance of school attendance for their children (parent survey)
DIO1	How much child care is being used
DIO2	Stability of child care placement
DIO3	TANF children with developmental delays are flagged in TANF PRISM and are engaged in appropriate early childhood development programs
DIO4	Older TANF youth have a desired vocation and plan (youth survey)
<i>Families Are Doing Well</i>	
Measure	Title

DO6	TANF parents alcohol/drug & mental health treatment needs are flagged in TANF PRISM and part of the case plan
DO7	TANF youth and adults with severe chronic health needs are flagged in TANF PRISM and youth
DO8	Families without medical homes are flagged in TANF PRISM and receive medical home information
DO9	TANF youth and parent who are homeless (from ACES and HMIS)
DO10	TANF parents are engaged/referred to network support groups
DO11	TANF parents are volunteering as part of their TANF plan
DO12	TANF parents are connected to DV shelters and groups as needed
DIO5	TANF families and youth are using local homeless prevention programs (HMIS), shelters (ACES and HMIS), and/or youth shelters (ACES and HMIS)
DIO6	TANF families use local housing services
DIO7	TANF youth who have frequent changes of address and school districts
DIO8	Using Homeless Prevention Programs
<i>Adults Are Doing Well Economically</i>	
Measure	Title
DO13	Vocational Planning (Self Report)
DO14	Enrolled in financial literacy path
DIO9	TANF Parents made progress in: Education Path; Secondary Educational Progress; Skill Development
DIO10	Have own business income
DIO11	Have progressed in employment prep
DIO12	Have federal or out of state jobs
DIO13	Are employed by occupational sector
DIO14	Completed financial literacy path

Performance Measure Percent of TANF children using WCCC by provider type (Child Care Center, Licensed Family Home, Unlicensed Friends/Family Care)

Measure Domain Kids are doing well

Measure Type Output Measure

Formula Number of TANF children ages 0-12 using WCCC by modality (CCCenter, Licensed FH, Unlicensed), divided by the total number of TANF children using WCCC in the month
TANF children: ESA Automated Client Eligibility System (ACES)

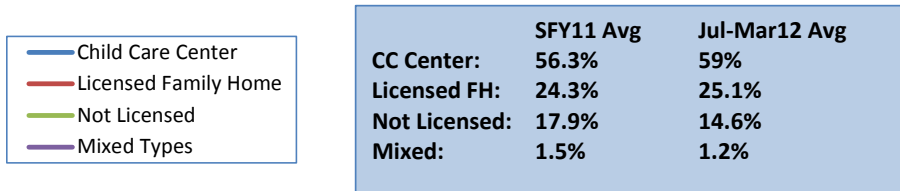
Data Source WCCC child care: Department of Early Learning (DEL) payment records

Data

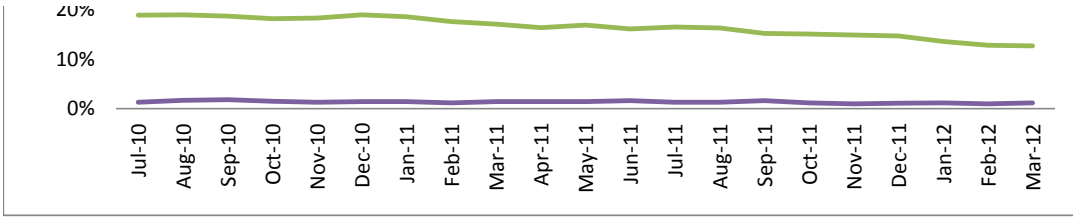
TANF Children Using WCCC by Type of Provider

Month	Child Care				TANF Children (Age 0-12)	TANF Children in WCCC
	Center	Licensed Family Home	Not Licensed	Mixed Types		
Jul-10	54.3%	25.5%	18.9%	1.3%	88,933	20,047
Aug-10	54.5%	24.7%	19.0%	1.7%	90,015	19,854
Sep-10	54.9%	24.6%	18.7%	1.8%	90,368	19,563
Oct-10	55.9%	24.4%	18.2%	1.5%	90,643	19,699
Nov-10	56.1%	24.3%	18.3%	1.3%	91,882	19,346
Dec-10	55.9%	23.7%	19.0%	1.4%	95,351	18,601
Jan-11	56.1%	24.0%	18.6%	1.4%	95,684	18,107
Feb-11	56.9%	24.3%	17.6%	1.2%	84,480	17,535
Mar-11	57.9%	23.6%	17.1%	1.4%	82,804	15,408
Apr-11	58.2%	23.9%	16.4%	1.4%	80,817	15,291
May-11	57.3%	24.3%	16.9%	1.4%	78,400	15,108
Jun-11	57.9%	24.4%	16.1%	1.6%	77,022	15,096
Jul-11	56.5%	25.6%	16.5%	1.3%	75,364	13,752
Aug-11	57.3%	25.1%	16.3%	1.3%	74,873	13,105
Sep-11	57.6%	25.5%	15.2%	1.6%	74,776	12,458
Oct-11	58.3%	25.4%	15.1%	1.2%	73,818	12,106
Nov-11	59.1%	25.0%	14.9%	1.0%	70,353	11,601
Dec-11	59.5%	24.8%	14.7%	1.1%	71,613	10,547
Jan-12	60.8%	24.4%	13.6%	1.2%	71,509	10,130
Feb-12	60.9%	25.3%	12.8%	1.0%	70,711	9,973
Mar-12	60.9%	25.1%	12.7%	1.2%	69,892	9,853
SFY11 Avg.	56.3%	24.3%	17.9%	1.5%	87,200	17,805
Jul11-Mar12 Avg	59.0%	25.1%	14.6%	1.2%	72,545	11,503

Percent of TANF Children Using WCCC by Type of Provider



70%
60%
50%
40%
30%
20%



Performance Measure Percent of TANF children who continue with the same type of care from month to month

Measure Domain Kids are doing well

Measure Type Immediate Outcome Measure

Number of TANF children ages 0-12 using WCCC by modality (CCCenter, Licensed FH, Unlicensed) in the current month, divided by the number of those children using the same modality in the prior month

Formula TANF children: ESA Automated Client Eligibility System (ACES)

Data Source WCCC child care: Department of Early Learning (DEL) payment records

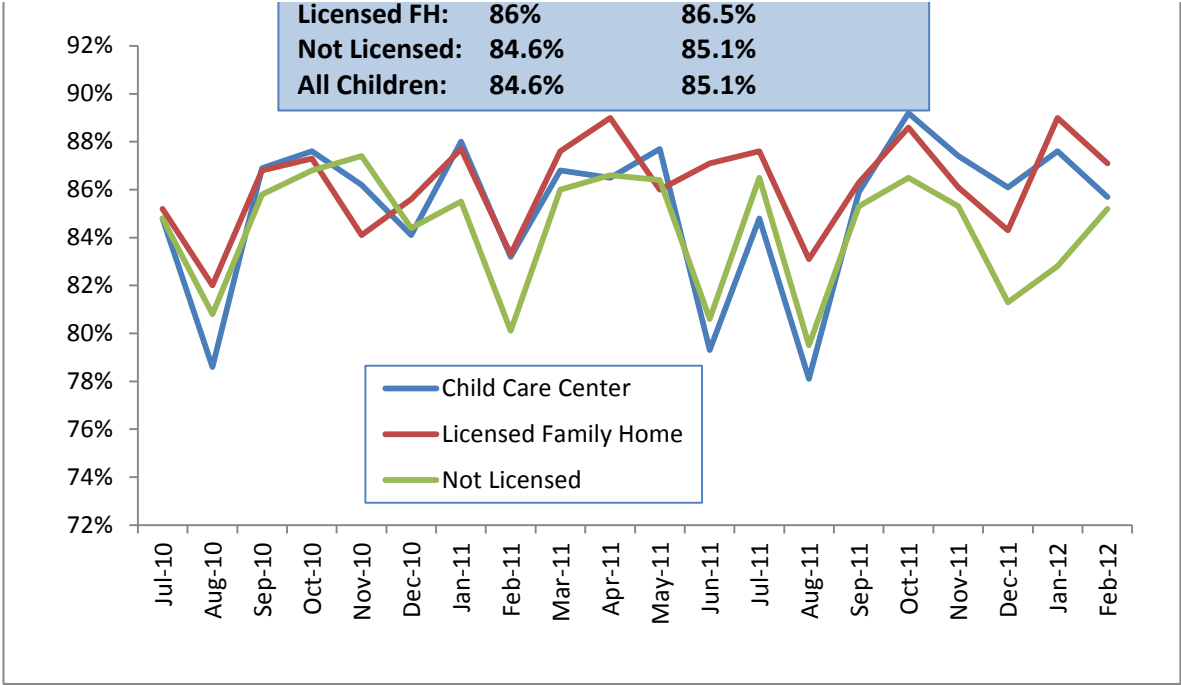
Data

Stability of Placement for TANF Children by Type of Provider

Month	Continuity Rate By Provider Type				Number in Child Care by Type		
	Child Care Center	Licensed Family Home	Not Licensed	All TANF Children	Child Care Center	Licensed Family Home	Not Licensed
Jul-10	84.8%	85.2%	84.8%	84.3%	10,888	5,114	3,781
Aug-10	78.6%	82.0%	80.8%	79.1%	10,820	4,912	3,779
Sep-10	86.9%	86.8%	85.8%	85.9%	10,744	4,810	3,653
Oct-10	87.6%	87.3%	86.8%	86.7%	11,013	4,802	3,586
Nov-10	86.2%	84.1%	87.4%	85.5%	10,856	4,697	3,538
Dec-10	84.1%	85.6%	84.4%	84.0%	10,397	4,410	3,539
Jan-11	88.0%	87.7%	85.5%	86.9%	10,152	4,341	3,368
Feb-11	83.2%	83.3%	80.1%	82.3%	9,981	4,254	3,085
Mar-11	86.8%	87.6%	86.0%	86.3%	8,918	3,640	2,629
Apr-11	86.5%	89.0%	86.6%	86.6%	8,905	3,653	2,515
May-11	87.7%	86.0%	86.4%	86.4%	8,657	3,673	2,560
Jun-11	79.3%	87.1%	80.6%	80.7%	8,735	3,680	2,435
Jul-11	84.8%	87.6%	86.5%	85.3%	7,769	3,525	2,273
Aug-11	78.1%	83.1%	79.5%	79.1%	7,511	3,287	2,140
Sep-11	85.9%	86.3%	85.3%	85.0%	7,174	3,181	1,899
Oct-11	89.2%	88.6%	86.5%	88.2%	7,060	3,076	1,823
Nov-11	87.4%	86.1%	85.3%	86.3%	6,859	2,897	1,725
Dec-11	86.1%	84.3%	81.3%	84.5%	6,272	2,611	1,548
Jan-12	87.6%	89.0%	82.8%	86.8%	6,159	2,471	1,380
Feb-12	85.7%	87.1%	85.2%	85.7%	6,075	2,520	1,278
SFY11 Avg	85.0%	86.0%	84.6%	84.6%	10,006	4,332	3,206
Jul-Feb12 Avg	85.6%	86.5%	84.1%	85.1%	6,860	2,946	1,758

Percent of TANF Children Who Continue the Same Type of Care From Month To Month

	SFY11 Avg	Jul-Mar12 Avg
CC Center:	85%	85.6%



Performance Measure Percent of TANF youth identified with drug/alcohol treatment need where treatment is received

Measure Domain Kids are doing well

Measure Type Immediate Outcome Measure

Formula Number of TANF youth ages 12-17 who received publicly funded AOD treatment, divided by the number of TANF youth ages 12-17 who have an indication of need for AOD treatment

TANF children: ESA Automated Client Eligibility System (ACES)

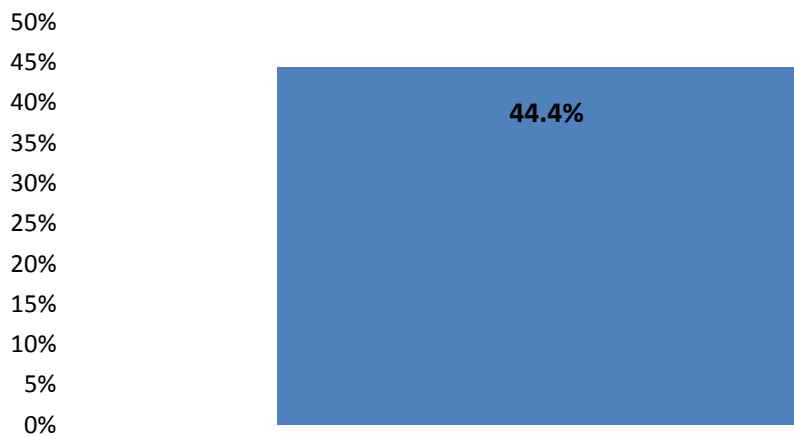
Data Source Alcohol/Drug treatment need and treatment received: DSHS Research and Data Analysis, Integrated Client Database

Data Note Alcohol or other drug (AOD) treatment need is indicated by medical and administrative data that reflect services, medications, or arrests recorded for substance-related problems in the current or prior fiscal year.

Data

	TANF Youth with indicated alcohol or other drug (AOD) treatment need			
	Youth age 12-17			
	% who get AOD services	Total getting AOD services	Population-All TANF Youth with AOD need	Total TANF Youth Population in SFY
SFY2011	44.4%	1,302	2,930	38,964

Percent of TANF Youth With AOD Treatment Need Who Received DSHS AOD Services - SFY 2011



Performance Measure Percent of TANF youth identified with mental health treatment need where treatment is received
Measure Kids are doing well

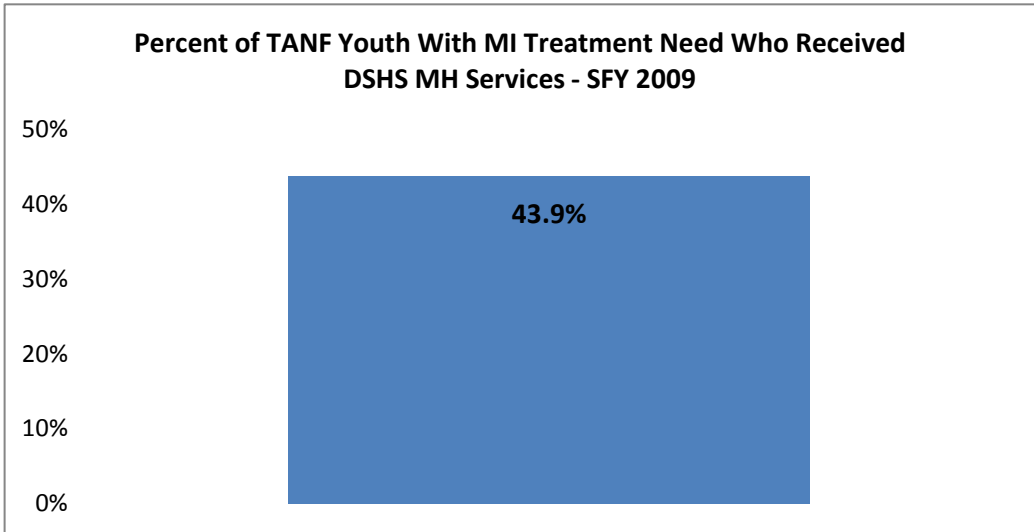
Measure Type Immediate Outcome Measure

Formula Number of TANF youth ages 12-17 who received publicly funded mental health services, divided by the number of TANF youth ages 12-17 who have an indication of need for mental health treatment

Data Source TANF children: ESA Automated Client Eligibility System (ACES)
 Mental health need and services received: DSHS Research and Data Analysis, Integrated Client Database
 Mental health need is identified through medical records and service files. Any receipt of mental health services through the DSHS Division of Behavioral Health and Recovery (DBHR/MH), prescribed psychotropic medications, or mental health-related medical diagnoses in defined categories during the current or prior fiscal year is considered an indicator of mental illness. Psychotropic medication classes include antipsychotics, antimania medications, antidepressants, anxiolytics (anti-anxiety), and ADHD medications.

Data Note
Data

TANF clients with indicated mental health treatment need				
	% who get DBHR/MH Services	Total getting MH services	Population-All with MH need	Total TANF Youth Population in SFY
SFY2009	43.9%	3,964	9,036	35,768



Performance Measure Percent of TANF parents identified with chemical dependency where treatment is part of the TANF plan

Domain Families are doing well

Measure Type Output measure

Number of TANF adults who had chemical dependency (CD) as part of the TANF plan (as indicated by XE eJAS component code) in the month, divided by number of TANF adults who have an indication of chemical dependency based on the CD screening in the Comprehensive Evaluation (CE)

Data Source DSHS-ESA-EMAPS, ACES, eJAS data systems

Data

TANF/SFA Adults Who Had a Chemical Dependency (CD) Indication Where

Datasource: ACES Data warehouse as of June 2012 Load

Report Date: June 19, 2012

Month	Total TANF/SFA Adults	Adults With a CD Indication ¹	Adults With a CD Indication And Referred to CD Treatment (eJAS Component Code 'XE') ²	% of Adults with a CD Indication and Referred to CD Treatment (XE)
201007	49,086	178	112	62.9%
201008	50,262	196	119	60.7%
201009	50,888	186	117	62.9%
201010	51,362	203	126	62.1%
201011	50,921	171	108	63.2%
201012	52,013	171	107	62.6%
201101	52,093	166	109	65.7%
201102	45,004	148	98	66.2%
201103	43,991	178	110	61.8%
201104	42,770	147	102	69.4%
201105	41,533	160	108	67.5%
201106	41,115	170	122	71.8%
201107	40,576	103	64	62.1%
201108	40,634	93	67	72.0%
201109	40,643	119	79	66.4%
201110	40,541	111	86	77.5%
201111	40,066	120	90	75.0%
201112	40,177	113	79	69.9%
201201	40,217	114	75	65.8%
201202	40,044	105	82	78.1%
201203	39,925	125	86	68.8%
201204	39,241	123	80	65.0%
201205	39,231	120	76	63.3%
SFY11 Avg.	47,587	173	112	64.7%
SFY12 Avg.	40,118	113	79	69.5%

Data Notes:

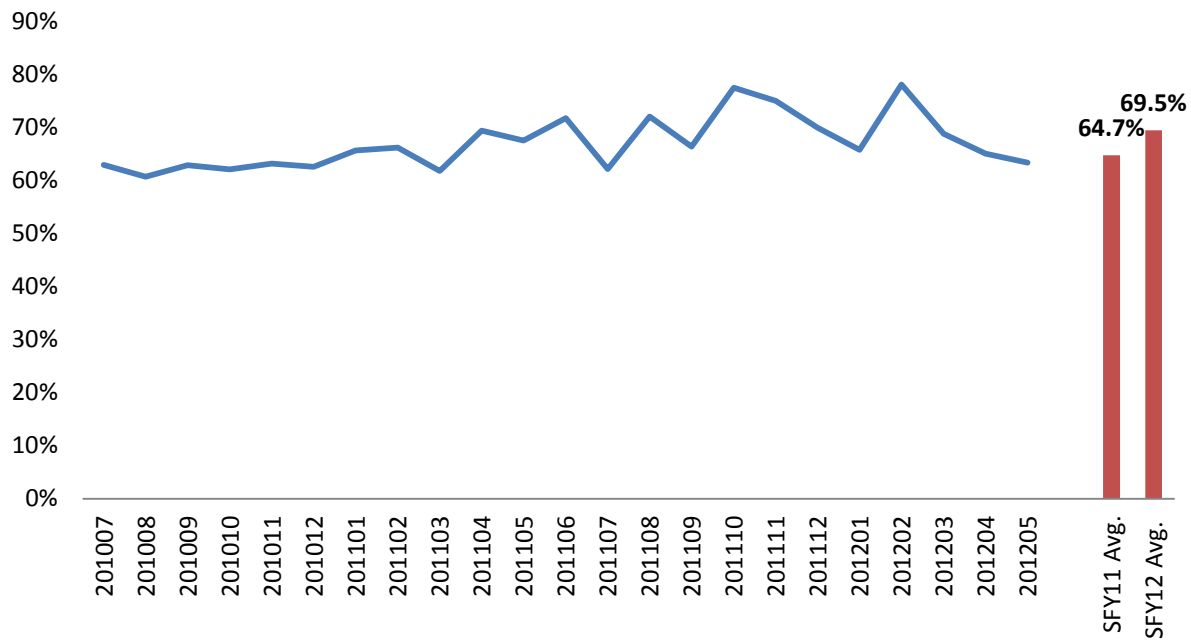
¹ These are the individuals who answered 'YES' to any one of the following CD screening questions in their Comprehensive Evaluation:

- Have you ever felt you should cut down on your drinking or drug use?"
- Have people annoyed you by criticizing your drinking or drug use?
- Have you felt bad or guilty about your drinking or drug use?
- Have you had difficulty at work, school or had legal problems the use of alcohol or other substances?"

² These are the individuals who have an open component code of 'XE' in the month as recorded in eJAS.

Percent of TANF Adults with a CD Indication Where CD Treatment Is Part of

TANF Plan



Performance Measure Percent of TANF children who reported being homeless without housing

Measure Domain Kids are doing well

Measure Type Output Measure

Formula Number of TANF children who reported being homeless without housing, divided by total number of TANF/SFA children in the month
 DSHS Economic Services Administration, Automated Client Eligibility

Data Source System (AES)

Data

Monthly TANF/SFA Homeless Children - January 2010 to December 2011

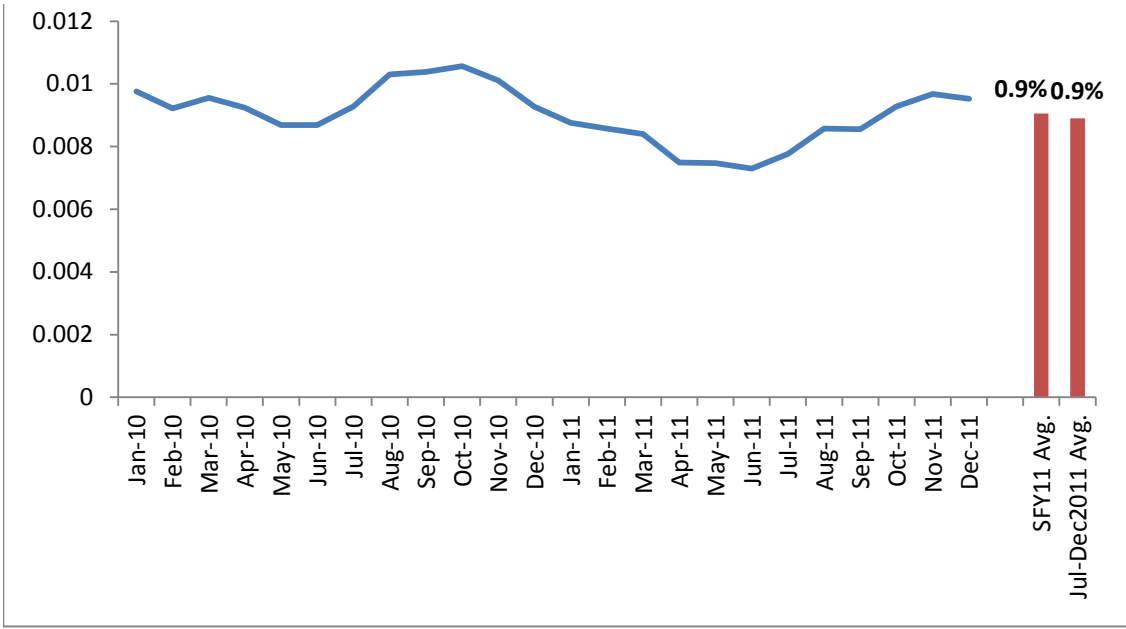
Source: ESA\EMAPS\ACES as of March 2012 load

Report Date: March 12, 2012

Month	Total TANF/SFA Children	# of Homeless Children	Number of Children Homeless Without Housing	% of Total TANF Children Homeless Without Housing	% of Total TANF Children Homeless Without Housing
Jan-10	111,928	5,503	1,092	1.0%	
Feb-10	111,228	5,398	1,025	0.9%	
Mar-10	112,084	5,429	1,071	1.0%	
Apr-10	112,384	5,447	1,038	0.9%	
May-10	112,205	5,375	975	0.9%	
Jun-10	112,266	5,526	975	0.9%	
Jul-10	110,656	5,846	1,027	0.9%	
Aug-10	112,177	6,468	1,156	1.0%	
Sep-10	112,723	6,746	1,170	1.0%	
Oct-10	113,143	7,105	1,196	1.1%	
Nov-10	114,560	7,103	1,158	1.0%	
Dec-10	118,698	6,983	1,100	0.9%	
Jan-11	119,046	6,922	1,043	0.9%	
Feb-11	104,883	6,129	899	0.9%	
Mar-11	102,904	6,111	864	0.8%	
Apr-11	100,529	5,902	753	0.7%	
May-11	97,671	5,641	730	0.7%	
Jun-11	96,196	5,703	702	0.7%	
Jul-11	93,231	5,875	724	0.8%	
Aug-11	92,587	6,402	794	0.9%	
Sep-11	92,339	6,684	790	0.9%	
Oct-11	91,178	6,764	846	0.9%	
Nov-11	86,251	6,573	835	1.0%	
Dec-11	87,427	6,370	833	1.0%	
SFY11 Avg.	108,599	6,388	983	0.9%	0.9%
Avg.	90,502	6,445	804	0.9%	0.9%

Note: Children in the "Battered Spouse Shelter" category were reported in the "Emergency Housing/Shelter" category.

Percent of TANF Children who Reported Being Homeless Without Housing



Performance Measure Percent of TANF parents identified with drug/alcohol treatment need where treatment is received
Measure need where treatment is received
Measure
Domain Families are doing well

Measure Type Immediate Outcome Measure

Formula Number of TANF adults who received publicly funded AOD treatment, divided by the number of TANF adults with AOD treatment need

TANF children: ESA Automated Client Eligibility System (ACES)

Data Source DSHS Research and Data Analysis, Integrated Client Database

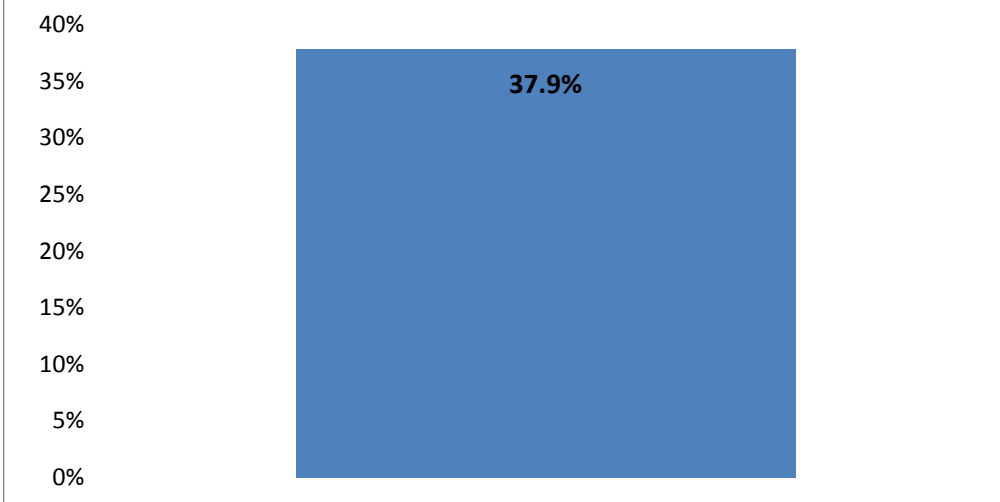
Alcohol or other drug (AOD) treatment need is indicated by medical and administrative data that reflect services, medications, or arrests recorded for substance-related problems in the current or prior fiscal year.

Data Note

Data

	TANF Youth with indicated alcohol or other drug (AOD) treatment need			
	% who get AOD services	Total getting AOD services	Population-All with AOD need	Total TANF Parent Population in SFY
SFY2011	37.9%	6,777	17,882	93,570

Percent of TANF Youth with AOD Treatment Need Who Received DSHS AOD Services - SFY 2011



Performance Measure Percent of TANF parents With Mental Health Issues where treatment is part of the TANF plan

Measure Domain Families are doing well

Measure Type Output measure

Formula Number of TANF adults who had MH treatment as part of the TANF plan (as indicated by XE eJAS component code) in the month, divided by number of TANF adults who have an indication of mental health issues based on the CD screening in the Comprehensive Evaluation (CE) in the month

Data Source DSHS-ESA-EMAPS, ACES, eJAS data systems

Data

TANF Adults With Mental Health Treatment Need Who Were Referred to MH Services

Date: June 19, 2012

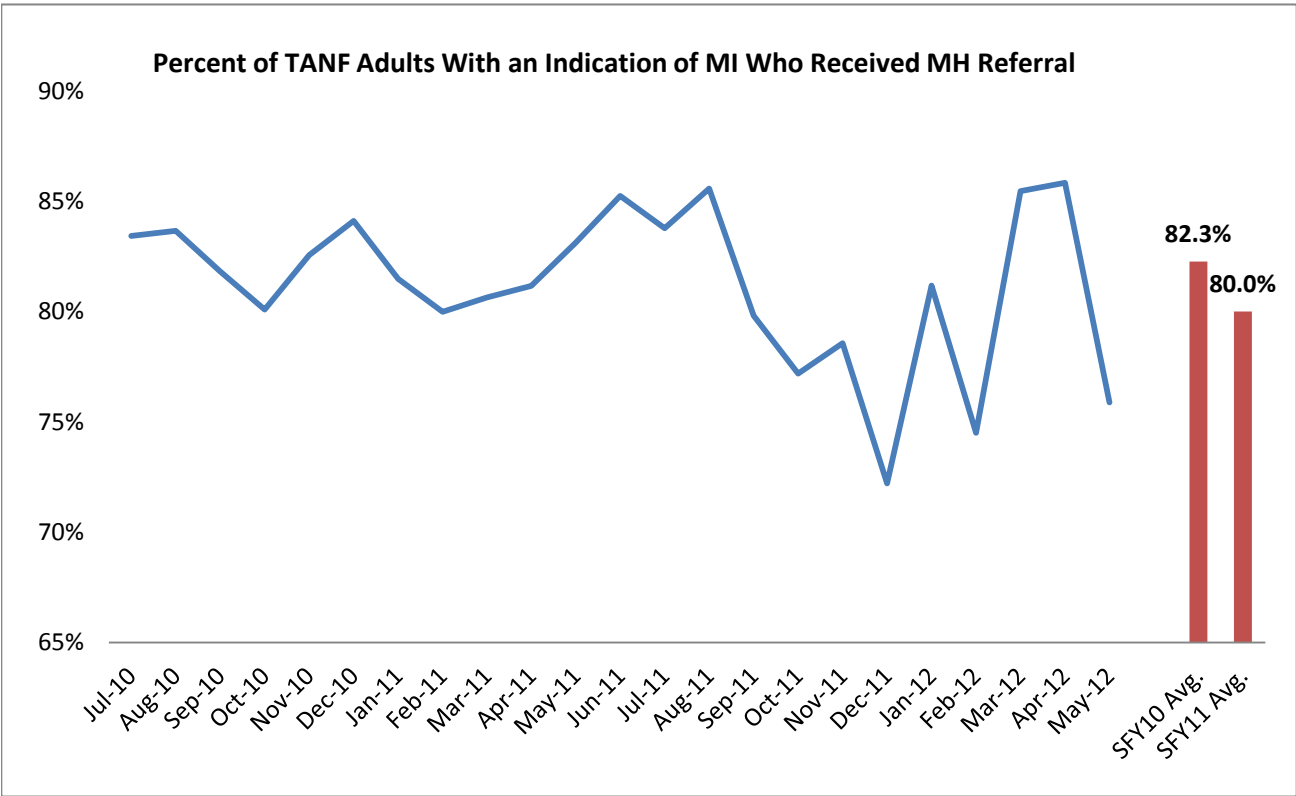
Month	TANF Adult	Adult With An Indication of Mental Illness ¹	Adult With Mental Health Issue And Had a MH Referral (eJAS code 'XG')	% of Adults with an Indication of Mental Illness Who had an MH Service Referral
Jul-10	49,086	169	141	83.4%
Aug-10	50,262	202	169	83.7%
Sep-10	50,888	198	162	81.8%
Oct-10	51,362	211	169	80.1%
Nov-10	50,921	172	142	82.6%
Dec-10	52,013	170	143	84.1%
Jan-11	52,093	162	132	81.5%
Feb-11	45,004	155	124	80.0%
Mar-11	43,991	186	150	80.6%
Apr-11	42,770	154	125	81.2%
May-11	41,533	160	133	83.1%
Jun-11	41,115	183	156	85.2%
Jul-11	40,576	111	93	83.8%
Aug-11	40,634	104	89	85.6%
Sep-11	40,643	114	91	79.8%
Oct-11	40,541	114	88	77.2%
Nov-11	40,066	98	77	78.6%
Dec-11	40,177	90	65	72.2%
Jan-12	40,217	101	82	81.2%
Feb-12	40,044	102	76	74.5%
Mar-12	39,925	117	100	85.5%
Apr-12	39,241	113	97	85.8%
May-12	39,231	112	85	75.9%

SFY10 Avg.	47,587	177	146	82.3%
SFY11 Avg.	40,118	107	86	80.0%

Data Note:

¹ The client's mental health flag is identified by the response to the MH screening question in the Comprehensive Evaluation (CE):

"Do you have any emotional or mental health issues that would affect your participation in WorkFirst activities or work?"



Performance Measure Percent of TANF parents with mental illness need flag receiving mental health treatment

Domain Families Are Doing Well

Measure Type Immediate Outcome Measure

Formula Number of TANF parents who received publicly funded mental health services, divided by the number of TANF parents who have an indication of need for mental health treatment

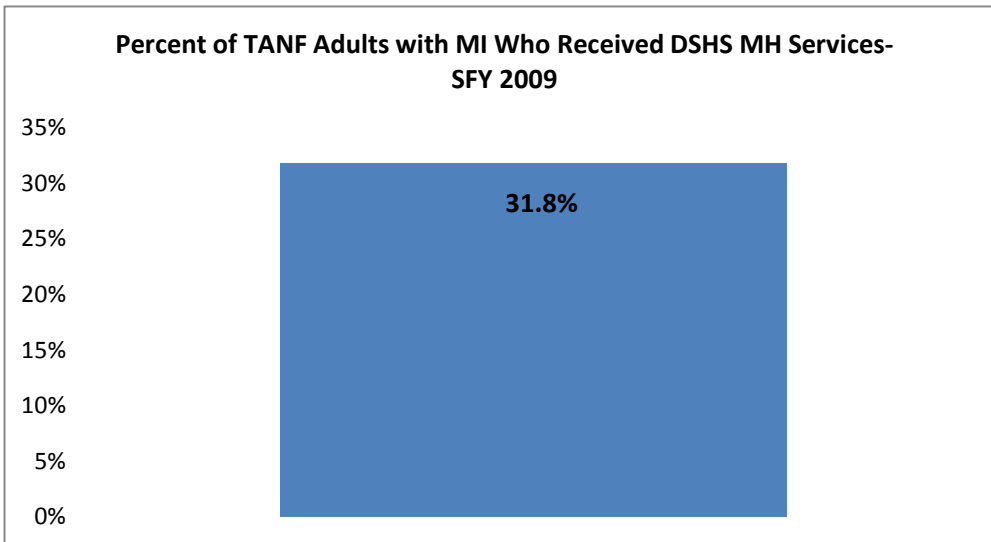
TANFparents: ESA Automated Client Eligibility System (ACES)

Data Source Mental health need and services received: DSHS Research and Data Analysis, Integrated Client Database

Mental health need is identified through medical records and service files. Any receipt of mental health services through the DSHS Division of Behavioral Health and Recovery (DBHR/MH), prescribed psychotropic medications, or mental health-related medical diagnoses in defined categories during the current or prior fiscal year is considered an indicator of mental illness. Psychotropic medication classes include antipsychotics, antimania medications, antidepressants, anxiolytics (anti-anxiety), and ADHD medications.

Data Note
Data

TANF Parents with indicated mental health treatment need				
	% who get DBHR/MH Services	Total getting MH services	Population- All with MH need	Total TANF Parent Population in SFY
SFY2009	31.8%	9,772	30,725	81,374



Performance Measure Percent of TANF parents identified with domestic violence (DV) or potential DV assistance need where DV issue is addressed in TANF plan

Measure Domain Families are doing well

Measure Type Output measure

Number of TANF adults who has DV addressed in TANF plan (as indicated by eJAS component code of 'XF') in the month, divided by total number of TANF adults with a DV indication (as indicated in the client's CE) in the month

Formula

Data Source DSHS-ESA-EMAPS, ACES data warehouse

Data

Month	TANF/SFA Adults	TANF/SFA Adults With a DV Indication ¹	% TANF/SFA Has DV Indicator	# of TANF Adults Who Had a DV Referral (XF eJAS Code)	% TANF Adults With a DV Referral (XF)
Jan-10	48246	1591	3.3%	235	14.8%
Feb-10	47865	1488	3.1%	199	13.4%
Mar-10	48508	1636	3.4%	235	14.4%
Apr-10	48752	1653	3.4%	263	15.9%
May-10	48686	1568	3.2%	243	15.5%
Jun-10	48873	1717	3.5%	296	17.2%
Jul-10	49086	1702	3.5%	274	16.1%
Aug-10	50262	1694	3.4%	285	16.8%
Sep-10	50888	1713	3.4%	297	17.3%
Oct-10	51362	1689	3.3%	288	17.1%
Nov-10	50921	1623	3.2%	240	14.8%
Dec-10	52014	1645	3.2%	258	15.7%
Jan-11	52,094	1,621	3.1%	289	17.8%
Feb-11	45,005	1,386	3.1%	246	17.7%
Mar-11	43,992	1,516	3.4%	270	17.8%
Apr-11	42,770	1,388	3.2%	237	17.1%
May-11	41,533	1,377	3.3%	259	18.8%
Jun-11	41,115	1,362	3.3%	281	20.6%
Jul-11	40,575	1,280	3.2%	252	19.7%
Aug-11	40,633	1,309	3.2%	279	21.3%
Sep-11	40,641	1,263	3.1%	241	19.1%
Oct-11	40,539	1,261	3.1%	231	18.3%
Nov-11	40,061	1,212	3.0%	224	18.5%
Dec-11	40,169	1,223	3.0%	221	18.1%
Jan-12	40,207	1,270	3.2%	223	17.6%
Feb-12	40,017	1,286	3.2%	224	17.4%

SFY11 avg	47,587	1,560	3.3%	269	17.3%
Jul11-Dec12 :	40,355	1,263	3.1%	237	18.7%

Notes:

¹ DV indication : TANF/SFA Adults who have one or more of the following indicators:

**Participate in Address Confidential Program(ACP)*

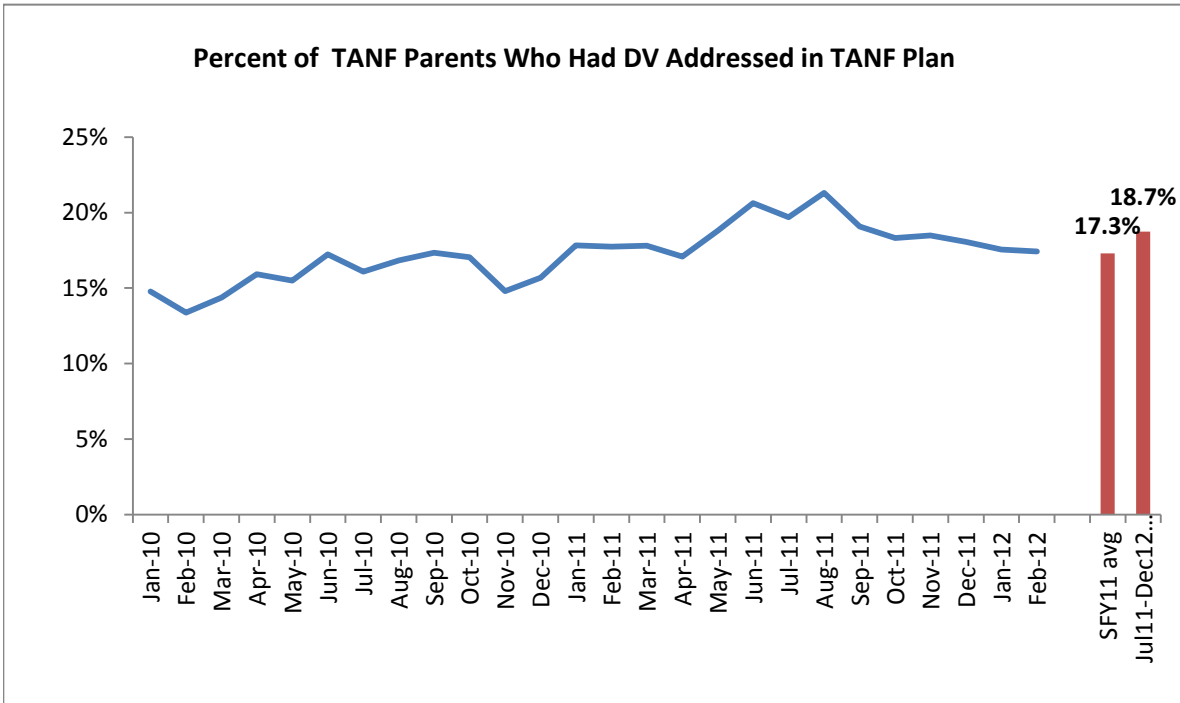
**Claiming DCS good cause*

**Answered 'Yes' on Comprehensive Evaluation(CE) questions:*

"Does your current partner have angry outbursts or tantrums that frighten you?"

"Has a partner threatened you or are you fearful for any other reason?"

is stalking you?"



Performance Measure Percent of TANF adults who reported being homeless without housing

Measure Domain Families are doing well

Measure Type Output Measure

Formula Number of TANF adults who reported being homeless without housing, divided by total number of TANF/SFA adults in the month
 DSHS Economic Services Administration, Automated Client Eligibility

Data Source System (AES)

Data

Monthly TANF/SFA Homeless Adults - January 2010 to December 2011

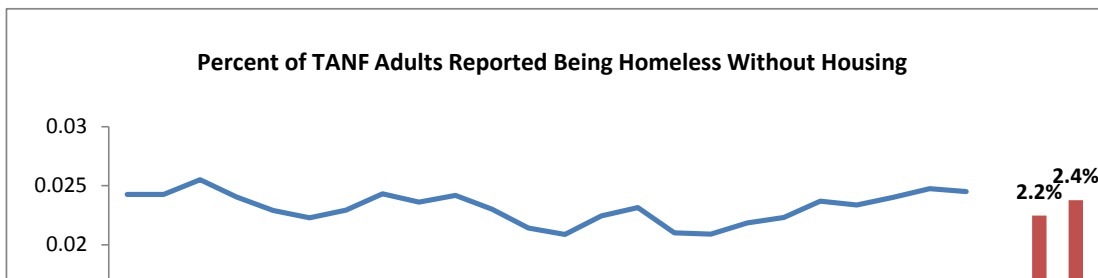
Source: ESA\EMAPS\ACES as of March 2012 load

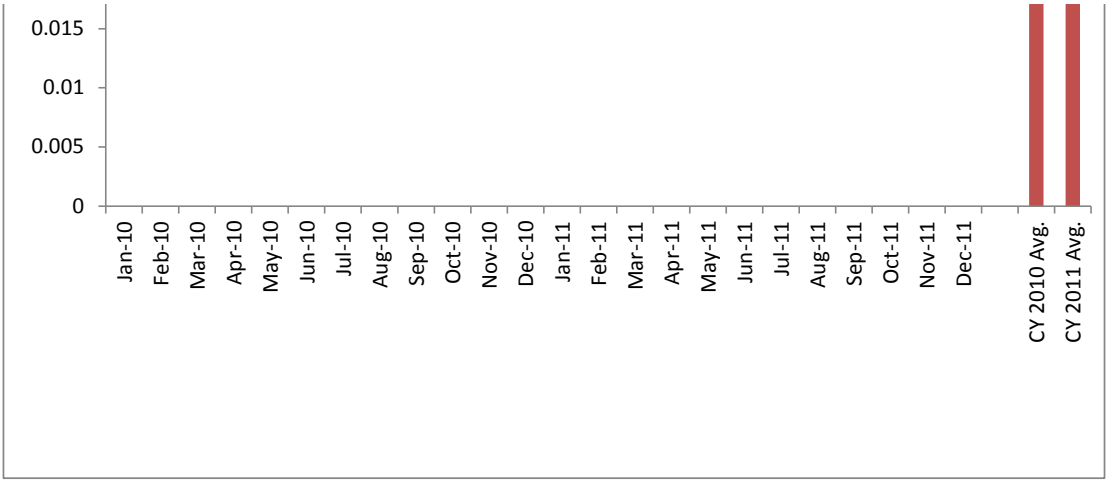
Report Date: March 12, 2012

Month	Total TANF/SFA Adults	Total # of Homeless Adults	Number of Adults Homeless Without Housing	% of Total TANF Adults Homeless Without Housing
Jan-10	48,246	4,515	1,171	2.4%
Feb-10	47,865	4,514	1,162	2.4%
Mar-10	48,508	4,620	1,237	2.6%
Apr-10	48,752	4,580	1,172	2.4%
May-10	48,686	4,612	1,115	2.3%
Jun-10	48,873	4,736	1,089	2.2%
Jul-10	49,086	4,929	1,126	2.3%
Aug-10	50,262	5,318	1,223	2.4%
Sep-10	50,888	5,577	1,202	2.4%
Oct-10	51,362	5,859	1,242	2.4%
Nov-10	50,921	5,809	1,172	2.3%
Dec-10	52,014	5,785	1,114	2.1%
Jan-11	52,094	5,877	1,088	2.1%
Feb-11	45,004	5,362	1,011	2.2%
Mar-11	43,991	5,364	1,019	2.3%
Apr-11	42,768	5,260	899	2.1%
May-11	41,531	5,106	868	2.1%
Jun-11	41,114	5,162	899	2.2%
Jul-11	40,574	5,297	905	2.2%
Aug-11	40,632	5,643	963	2.4%
Sep-11	40,640	5,779	950	2.3%
Oct-11	40,537	5,818	974	2.4%
Nov-11	40,052	5,789	991	2.5%
Dec-11	40,153	5,694	984	2.5%

CY 2010 Avg.	47,586	5,451	1,072	2.2%
CY 2011 Avg.	40,431	5,670	961	2.4%

Note: Adults in the "Battered Spouse Shelter" category were reported in the "Emergency Housing/Shelter" category.





Performance Measure Percent of TANF homeless adults where housing improvement actions are part of the TANF plan

Measure Domain Families are doing well

Measure Type Output Measure

Formula Number of TANF adults who had housing improvement actions as part of the TANF plan (as indicated by XH eJAS component code), divided by number of adults reporting being homeless

Data Source DSHS-ESA-EMAPS, Automated Client Eligibility System (ACES)

Data

TANF/SFA Homeless Adults Who Had Housing Improvement Actions As Part of TANF Plan (As Indicated by eJAS coding of 'XH')

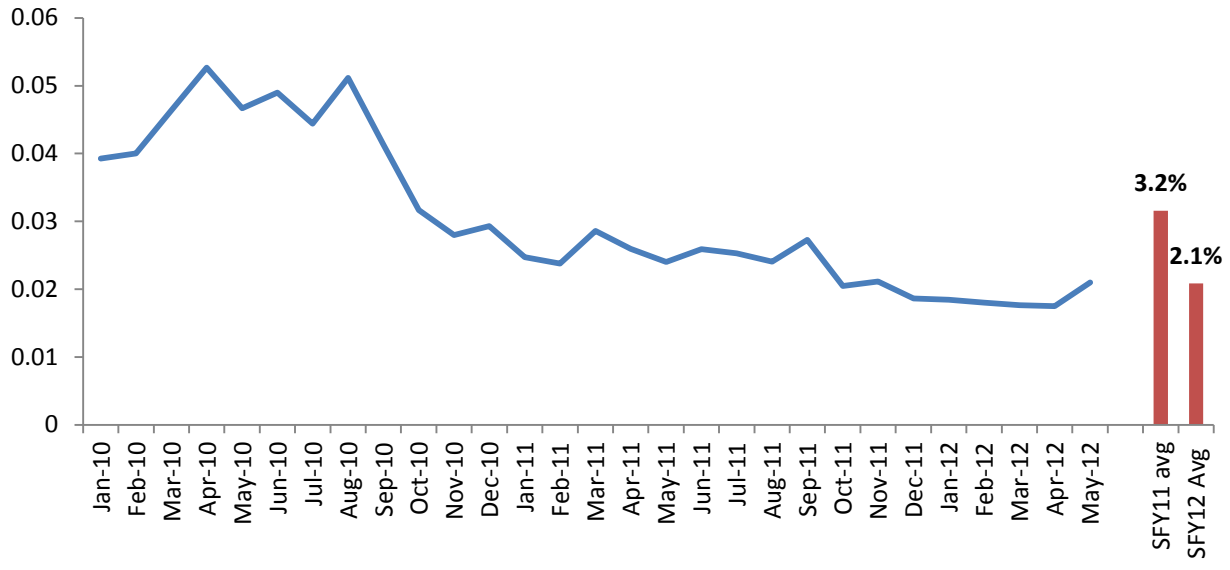
Datasource: ACES Data warehouse as of June 2012 Load

Date: June 22, 2012

Month	# of TANF/SFA Adults Reporting Being Homeless	# of TANF/SFA Homeless Adults Coded 'XH' In the Month	% of TANF Adults Who Had an XH Code in the Month
Jan-10	4,506	177	3.9%
Feb-10	4,499	180	4.0%
Mar-10	4,593	213	4.6%
Apr-10	4,556	240	5.3%
May-10	4,586	214	4.7%
Jun-10	4,713	231	4.9%
Jul-10	4,909	218	4.4%
Aug-10	5,296	271	5.1%
Sep-10	5,565	230	4.1%
Oct-10	5,842	185	3.2%
Nov-10	5,790	162	2.8%
Dec-10	5,768	169	2.9%
Jan-11	5,866	145	2.5%
Feb-11	5,336	127	2.4%
Mar-11	5,346	153	2.9%
Apr-11	5,236	136	2.6%
May-11	5,075	122	2.4%
Jun-11	5,129	133	2.6%
Jul-11	5,256	133	2.5%
Aug-11	5,614	135	2.4%
Sep-11	5,753	157	2.7%
Oct-11	5,811	119	2.0%
Nov-11	5,774	122	2.1%
Dec-11	5,684	106	1.9%
Jan-12	5,579	103	1.8%
Feb-12	5,548	100	1.8%
Mar-12	5,552	98	1.8%
Apr-12	5,477	96	1.8%
May-12	5,574	117	2.1%
SFY11 avg	5,430	171	3.2%
SFY12 Avg	5,602	117	2.1%

Percent of TANF Homeless Adults Where Housing Improvement Actions Are Part of TANF

Plan



Performance Measure Percent of TANF children with child support payment collected

Measure Domain Families Are Doing Well

Measure Type Output Measure

Formula Number of TANF children with the child support payment collected from the non-custodial parent (NCP), divided by total number of TANF/SFA children with an open child support case in the month

Data Source DSHS-ESA-EMAPS, Support Enforcement Management System (SEMS)

Data

Percent of TANF Children with Child Support Payment Collected

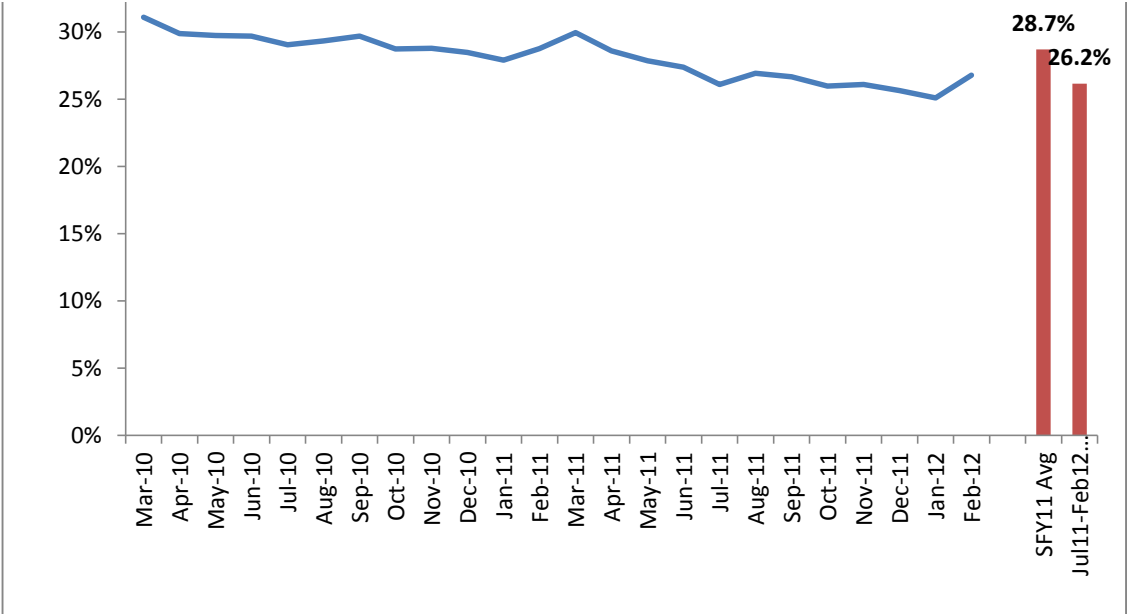
Data Source: SEMS

Report Run Date: 15MAR2012

Month	# of TANF Children with Open Child Support Cases	# of TANF Children With Child Support Payment	% of TANF Children with Child Support Payment
Mar-10	61,747	19,193	31.1%
Apr-10	62,441	18,651	29.9%
May-10	62,716	18,646	29.7%
Jun-10	62,394	18,526	29.7%
Jul-10	63,670	18,499	29.1%
Aug-10	64,366	18,875	29.3%
Sep-10	64,379	19,118	29.7%
Oct-10	65,404	18,787	28.7%
Nov-10	65,777	18,930	28.8%
Dec-10	65,687	18,711	28.5%
Jan-11	58,433	16,299	27.9%
Feb-11	50,009	14,382	28.8%
Mar-11	54,981	16,466	29.9%
Apr-11	53,965	15,430	28.6%
May-11	52,804	14,703	27.8%
Jun-11	50,965	13,956	27.4%
Jul-11	52,342	13,656	26.1%
Aug-11	51,855	13,961	26.9%
Sep-11	51,268	13,669	26.7%
Oct-11	49,410	12,839	26.0%
Nov-11	48,210	12,576	26.1%
Dec-11	48,358	12,405	25.7%
Jan-12	48,839	12,257	25.1%
Feb-12	47,752	12,791	26.8%
SFY11 Avg	59,203	17,013	28.7%
Jul11-Feb12 Avg	49,754	13,019	26.2%

Percent of TANF Children with Child Support Payment Collected from Non-custodial Parent

35% 



Performance Measure Percent of TANF families with a child placed outside the home by DSHS Children's Administration that received concurrent benefits (when eligible)

Measure Domain Families Are Doing Well

Measure Type Immediate outcome measure

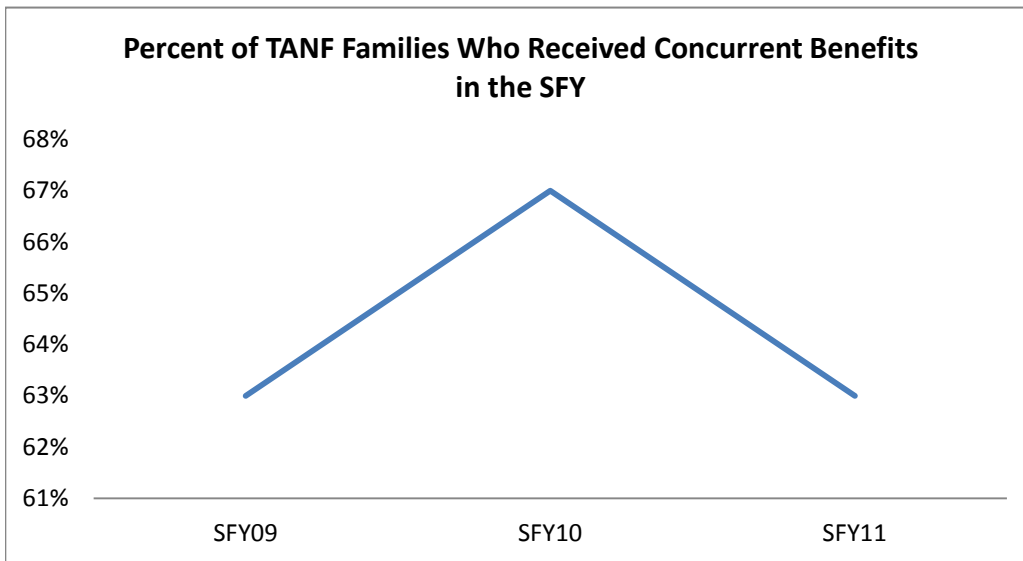
Number of TANF households receiving a TANF payment through participation in the concurrent benefit programs in the SFY, divided by the number of TANF households in which a child was placed outside the home by DSHS Children's Administration in the SFY

Formula

Data Source DSHS RDA

Data

SFY	% Cases Receiving Concurrent Benefits	# TANF Cases With a Child Removed
SFY09	63%	1,314
SFY10	67%	1,489
SFY11	63%	1,415



Performance Measure Percent of TANF adults without a HS diploma or GED who are engaged in HS or GED activities

Measure Domain Adults Are Doing Well Economically

Measure Type Output measure

Number of TANF non-LEP adults engaged in HS or GED activities in the month, divided by total number of TANF adults who are not LEP and who do not have a HS or GED in the month as recorded in ACES

Formula

Data Source DSHS-ESA-EMAPS, ACES and eJAS data systems

Data

TANF/SFA Adults Enrolled in High School(HS) or GED(GE)

Source: ESA-EMAPS using the ACES Data Warehouse as of June 2012

Report Run Date: June 25, 2012

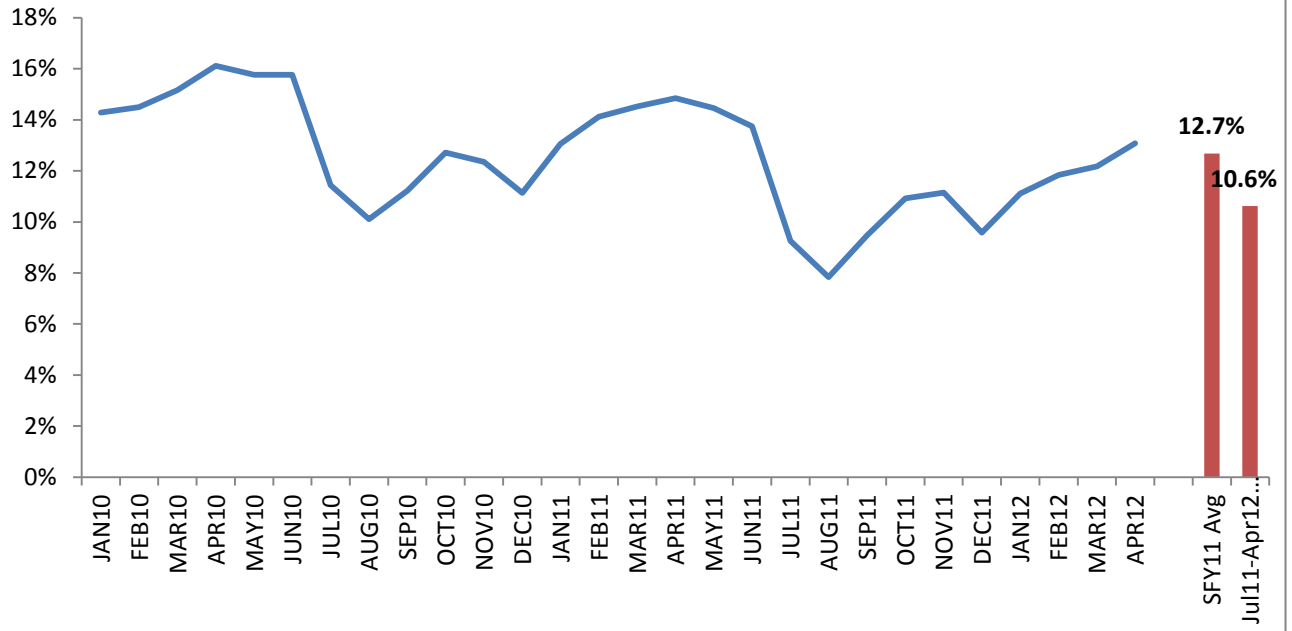
	TANF/SFA Adults Who Are Not LEP and Do Not have a High School Level of Education or GED ¹	Enrolled in GED or High School ²	
	# of Clients	# of Clients	% of Total Clients
JAN10	14,476	2,068	14.3%
FEB10	14,362	2,083	14.5%
MAR10	14,494	2,197	15.2%
APR10	14,568	2,348	16.1%
MAY10	14,494	2,285	15.8%
JUN10	14,433	2,276	15.8%
JUL10	14,403	1,648	11.4%
AUG10	14,687	1,484	10.1%
SEP10	14,821	1,663	11.2%
OCT10	14,906	1,895	12.7%
NOV10	14,573	1,801	12.4%
DEC10	14,801	1,649	11.1%
JAN11	14,778	1,930	13.1%
FEB11	12,552	1,772	14.1%
MAR11	12,288	1,785	14.5%
APR11	11,901	1,767	14.8%
MAY11	11,618	1,680	14.5%
JUN11	11,339	1,558	13.7%
JUL11	11,080	1,026	9.3%
AUG11	11,053	866	7.8%
SEP11	11,064	1,047	9.5%
OCT11	11,012	1,203	10.9%
NOV11	10,928	1,218	11.1%
DEC11	10,882	1,043	9.6%
JAN12	10,796	1,200	11.1%
FEB12	10,755	1,273	11.8%
MAR12	10,697	1,302	12.2%
APR12	10,550	1,380	13.1%
SFY11 Avg	13,556	1,719	12.7%
Jul11-Apr12 Avg	10,882	1,156	10.6%

Data Notes:

¹Data is based on the number of years of education the client has completed. This

² Includes component codes GED(GE), High School(HS).

Percent of TANF Adults Engaged in High School or GED Activities



Performance**Measure** Percent of TANF LEP adults who are engaged in ESL activities**Measure Domain** Adults Are Doing Well Economically**Measure Type** Output measure

Number of TANF LEP adults engaged in ESL activities in the month, divided by total number of TANF LEP adults in the month as recorded in ACES

Formula**Data Source** DSHS-ESA-EMAPS, ACES and eJAS data systems**Data****TANF/SFA WorkFirst Adults Enrolled in Limited in English Proficiency(LP) or English as a Second Language(ES)**

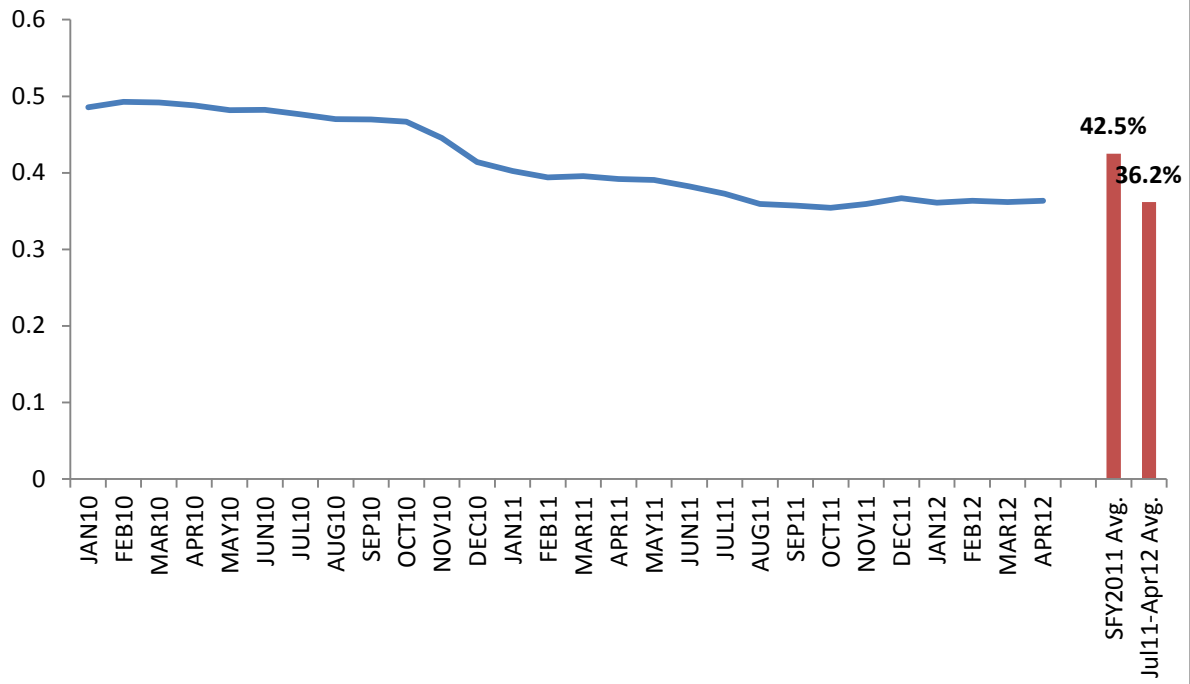
Source: ESA-EMAPS Assignment #2408 using the ACES Data Warehouse as

Report Run Date: June 25, 2012

	TANF/SFA Adults Who Are Limited in English Proficiency¹	Enrolled in Limited in English Proficiency(LP) or English as a Second Language(ES)²	
	# of Clients	# of Clients	% of Total Clients
JAN10	6,153	2,987	48.5%
FEB10	6,221	3,065	49.3%
MAR10	6,297	3,096	49.2%
APR10	6,273	3,061	48.8%
MAY10	6,229	3,002	48.2%
JUN10	6,214	2,997	48.2%
JUL10	6,137	2,923	47.6%
AUG10	6,178	2,905	47.0%
SEP10	6,206	2,914	47.0%
OCT10	6,234	2,911	46.7%
NOV10	6,342	2,825	44.5%
DEC10	6,626	2,745	41.4%
JAN11	6,708	2,699	40.2%
FEB11	6,011	2,368	39.4%
MAR11	5,847	2,314	39.6%
APR11	5,634	2,207	39.2%
MAY11	5,449	2,129	39.1%
JUN11	5,346	2,043	38.2%
JUL11	5,060	1,885	37.3%
AUG11	5,026	1,805	35.9%
SEP11	5,014	1,791	35.7%
OCT11	4,937	1,750	35.4%
NOV11	4,897	1,759	35.9%
DEC11	4,997	1,833	36.7%
JAN12	5,017	1,811	36.1%
FEB12	4,996	1,815	36.3%
MAR12	4,986	1,803	36.2%
APR12	4,804	1,746	36.3%
SFY2011 Avg.	6,060	2,582	42.5%
Jul11-Apr12 Avg.	4,973	1,800	36.2%

Data Notes:¹ Data is based on primary language code, needing an interpreter, and INS immigration data.² Includes component codes Limited in English Proficiency(LP), English as a Second Language(ES).

Percent of TANF LEP Adults Who Are Engaged in ESL Activities



Performance Measure **Percent of TANF adults who are engaged in education pathway**

Measure Domain Adults Are Doing Well Economically

Measure Type Output measure

Formula Number of TANF adults engaged in one or more of education pathway activities (VE, PE, HW, DC, LS, JT, HS, GE, VU), divided by total number of TANF adults in the month

Data Source DSHS-ESA-EMAPS, ACES and eJAS data systems

Data

Activities, January 2010 to April 2012

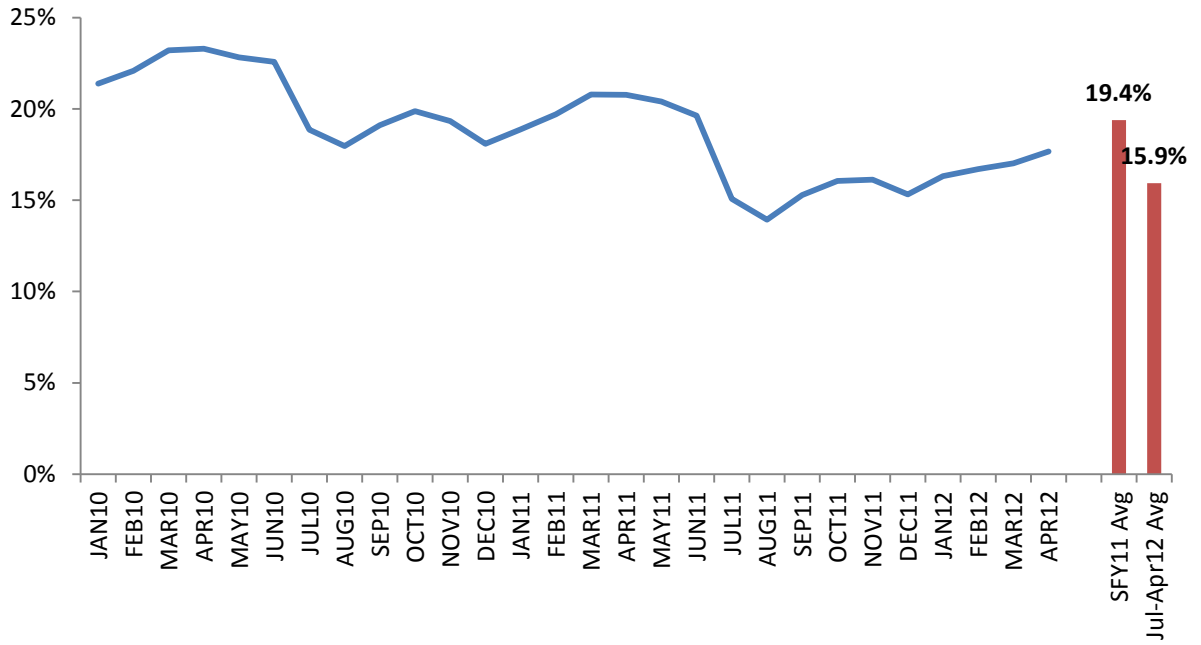
Source: ESA-EMAPS using the ACES Data Warehouse as of June 2012

Report Run Date: June 25, 2012

	Total	Education Path: Enrolled in any educational activities ¹	
	# of Clients	# of Clients	% of Total Clients
JAN10	48,246	10,324	21.4%
FEB10	47,865	10,576	22.1%
MAR10	48,508	11,260	23.2%
APR10	48,752	11,363	23.3%
MAY10	48,686	11,117	22.8%
JUN10	48,873	11,034	22.6%
JUL10	49,086	9,258	18.9%
AUG10	50,262	9,034	18.0%
SEP10	50,888	9,724	19.1%
OCT10	51,362	10,212	19.9%
NOV10	50,921	9,845	19.3%
DEC10	52,013	9,413	18.1%
JAN11	52,093	9,833	18.9%
FEB11	45,004	8,870	19.7%
MAR11	43,991	9,144	20.8%
APR11	42,770	8,890	20.8%
MAY11	41,533	8,476	20.4%
JUN11	41,115	8,071	19.6%
JUL11	40,576	6,121	15.1%
AUG11	40,634	5,665	13.9%
SEP11	40,643	6,214	15.3%
OCT11	40,541	6,508	16.1%
NOV11	40,066	6,462	16.1%
DEC11	40,177	6,155	15.3%
JAN12	40,217	6,566	16.3%
FEB12	40,044	6,688	16.7%
MAR12	39,925	6,794	17.0%
APR12	39,241	6,933	17.7%
SFY11 Avg	47,587	9,231	19.4%
Jul-Apr12 Avg	40,206	6,411	15.9%

¹ Includes component codes Degree Completion(DC), High Wage/High

Percent of TANF Adults Who Are Engaged in Education Pathway Activities



Performance Measure **Percent of TANF adults who are engaged in post secondary or vocational education**

Measure Domain Adults Are Doing Well Economically

Measure Type Output measure

Number of TANF adults engaged in one or more of the post secondary or vocational education activities (VU, VE, PE, HW, DC), divided by total number of TANF adults in the month

Formula

Data Source DSHS-ESA-EMAPS, ACES and eJAS data systems

Data

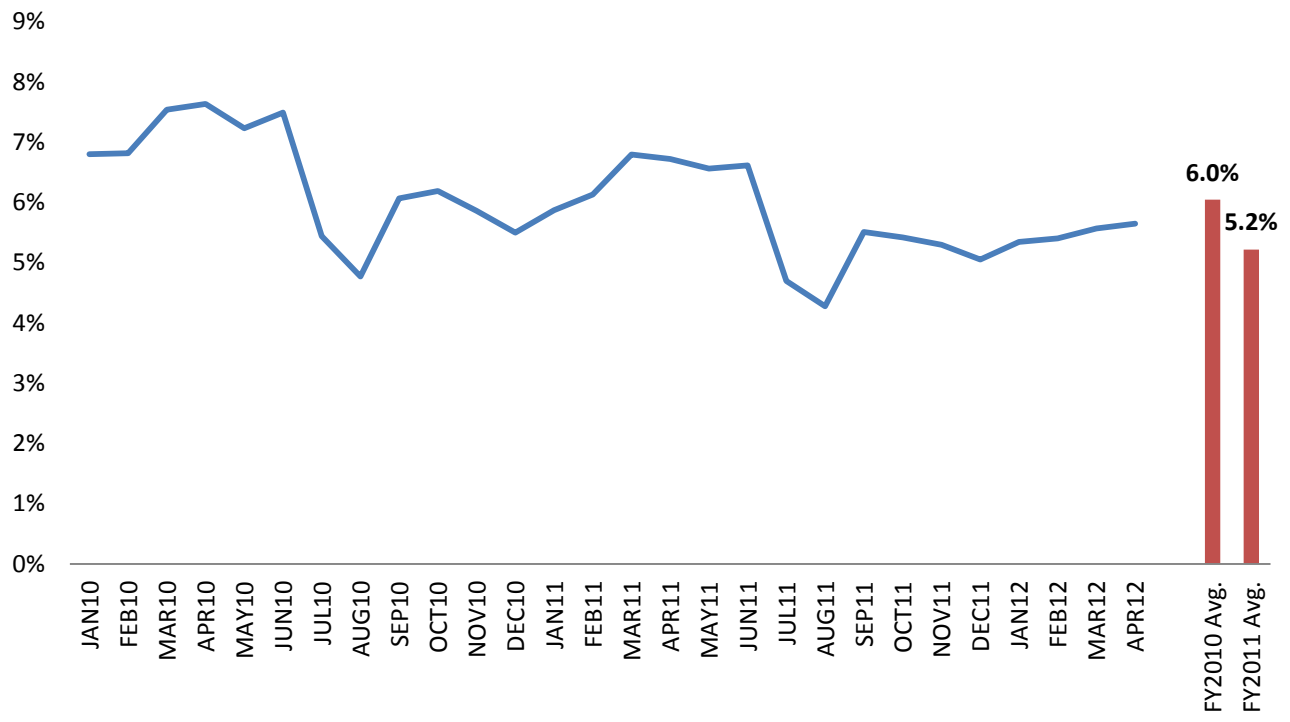
Activities, January 2010 to April 2012

Source: ESA-EMAPS using the ACES Data Warehouse as of June 2012

Report Run Date: June 25, 2012

	Total	Vocational Education¹	
	# of Clients	# of Clients	% of Total Clients
JAN10	48,246	3,282	6.8%
FEB10	47,865	3,264	6.8%
MAR10	48,508	3,657	7.5%
APR10	48,752	3,722	7.6%
MAY10	48,686	3,521	7.2%
JUN10	48,873	3,661	7.5%
JUL10	49,086	2,672	5.4%
AUG10	50,262	2,398	4.8%
SEP10	50,888	3,088	6.1%
OCT10	51,362	3,180	6.2%
NOV10	50,921	2,986	5.9%
DEC10	52,013	2,861	5.5%
JAN11	52,093	3,060	5.9%
FEB11	45,004	2,760	6.1%
MAR11	43,991	2,989	6.8%
APR11	42,770	2,875	6.7%
MAY11	41,533	2,726	6.6%
JUN11	41,115	2,721	6.6%
JUL11	40,576	1,907	4.7%
AUG11	40,634	1,738	4.3%
SEP11	40,643	2,240	5.5%
OCT11	40,541	2,197	5.4%
NOV11	40,066	2,123	5.3%
DEC11	40,177	2,030	5.1%
JAN12	40,217	2,151	5.3%
FEB12	40,044	2,165	5.4%
MAR12	39,925	2,224	5.6%
APR12	39,241	2,216	5.6%
FY2010 Avg.	47,587	2,860	6.0%
FY2011 Avg.	40,206	2,099	5.2%

Percent of TANF Adults Who Are Engaged in Post Secondary or Vocational Education



Performance Measure Percent of TANF adults who are engaged in basic education

Measure Domain Adults Are Doing Well Economically

Measure Type Output measure

Number of TANF adults engaged in one or more of the basic education activities (BE, JT, and LS), divided by number of TANF adults in the month

Formula

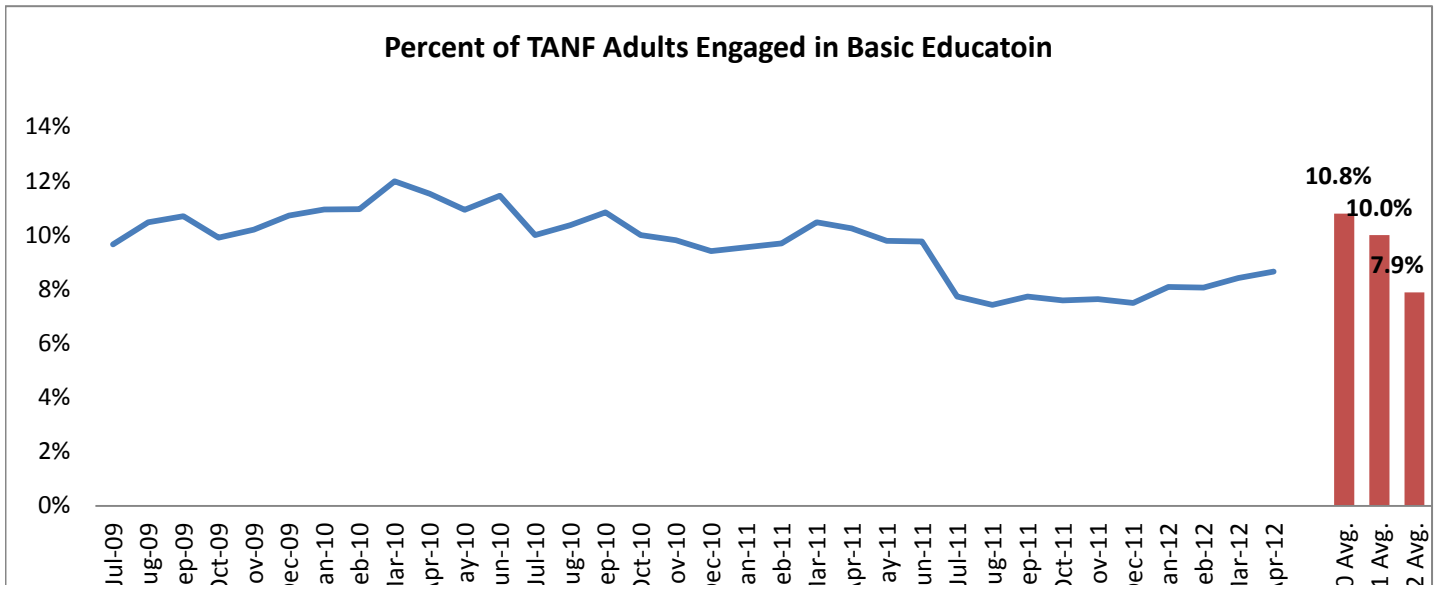
Data Source DSHS-ESA-EMAPS, ACES and eJAS data systems

Data

Adults Engaged in Basic Education

Month	Total TANF Adults	In Basic Education (BE, JT, LS)	Percent of Adults in Basic Education
Jul-09	44,862	4,335	9.7%
Aug-09	45,359	4,748	10.5%
Sep-09	46,327	4,958	10.7%
Oct-09	47,398	4,694	9.9%
Nov-09	47,549	4,849	10.2%
Dec-09	48,127	5,160	10.7%
Jan-10	48,241	5,279	10.9%
Feb-10	47,856	5,244	11.0%
Mar-10	48,501	5,813	12.0%
Apr-10	48,745	5,616	11.5%
May-10	48,679	5,322	10.9%
Jun-10	48,866	5,597	11.5%
Jul-10	49,076	4,908	10.0%
Aug-10	50,250	5,212	10.4%
Sep-10	50,878	5,513	10.8%
Oct-10	51,354	5,135	10.0%
Nov-10	50,915	4,994	9.8%
Dec-10	52,008	4,892	9.4%
Jan-11	52,091	4,976	9.6%
Feb-11	45,001	4,361	9.7%
Mar-11	43,985	4,608	10.5%
Apr-11	42,764	4,383	10.2%
May-11	41,527	4,062	9.8%
Jun-11	41,110	4,015	9.8%
Jul-11	40,569	3,136	7.7%
Aug-11	40,627	3,013	7.4%
Sep-11	40,640	3,141	7.7%
Oct-11	40,540	3,078	7.6%
Nov-11	40,064	3,060	7.6%
Dec-11	40,173	3,009	7.5%
Jan-12	40,211	3,251	8.1%

Month	Total TANF	In Basic Education	Percent of Adults in Basic Education
	Adults	(BE, JT, LS)	
Feb-12	40,037	3,226	8.1%
Mar-12	39,904	3,358	8.4%
Apr-12	39,113	3,386	8.7%
FY 2010 Avg.	47,543	5,135	10.8%
FY 2011 Avg.	47,580	4,755	10.0%
FY 2012 Avg.	40,188	3,166	7.9%



Percent of TANF adults who are engaged in skill

Performance Measure development

Measure Domain Adults Are Doing Well Economically

Measure Type Output measure

Number of TANF adults engaged in one of these activities as indicated by eJAS component codes: JT, WE, LS, divided

Formula by number of TANF adults in the month

Data Source DSHS-ESA-EMAPS, ACES and eJAS data systems

Data

TANF/SFA WorkFirst Adults Enrolled in Education and Training Activities, January 2010 to April 2012

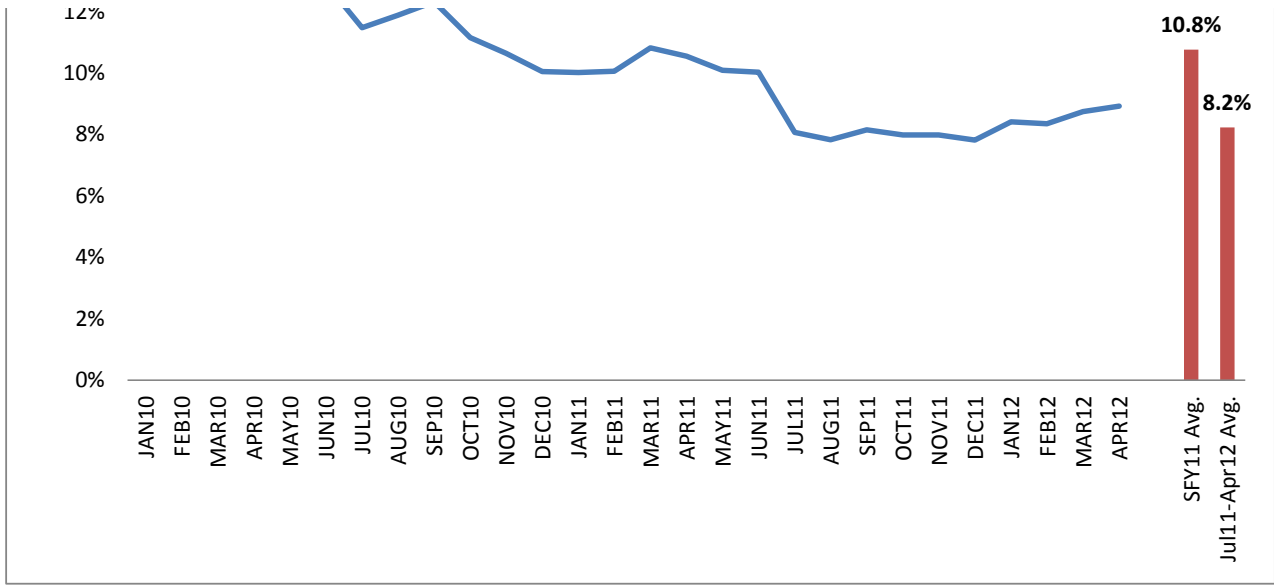
Report Run Date: June 25, 2012

	Total # of Clients	Enrolled in Skill Development ¹	
		# of Clients	% of All TANF/SFA Adults
JAN10	48,246	6,122	12.7%
FEB10	47,865	6,094	12.7%
MAR10	48,508	6,621	13.6%
APR10	48,752	6,398	13.1%
MAY10	48,686	6,041	12.4%
JUN10	48,873	6,313	12.9%
JUL10	49,086	5,636	11.5%
AUG10	50,262	5,972	11.9%
SEP10	50,888	6,272	12.3%
OCT10	51,362	5,731	11.2%
NOV10	50,921	5,422	10.6%
DEC10	52,013	5,228	10.1%
JAN11	52,093	5,216	10.0%
FEB11	45,004	4,528	10.1%
MAR11	43,991	4,761	10.8%
APR11	42,770	4,512	10.5%
MAY11	41,533	4,189	10.1%
JUN11	41,115	4,121	10.0%
JUL11	40,576	3,274	8.1%
AUG11	40,634	3,182	7.8%
SEP11	40,643	3,313	8.2%
OCT11	40,541	3,235	8.0%
NOV11	40,066	3,199	8.0%
DEC11	40,177	3,140	7.8%
JAN12	40,217	3,381	8.4%
FEB12	40,044	3,343	8.3%
MAR12	39,925	3,491	8.7%
APR12	39,241	3,503	8.9%
SFY11 Avg.	47,587	5,132	10.8%
Jul11-Apr12 Avg.	40,206	3,306	8.2%

Data Notes:

¹ Includes component codes Job Skills Training(JT), Work Experience(WE), Life





Performance Measure Percent of TANF adults engaged in work preparation/training pathways

Measure Domain Adults Are Doing Well Economically

Measure Type Output measure

Number of TANF adults who started one or more of the Commerce work programs as indicated by eJAS component codes of CJ or JC in the month, divided by total number of TANF adults in the month

Formula

Data Source DSHS-ESA-EMAPS, ACES and eJAS data systems

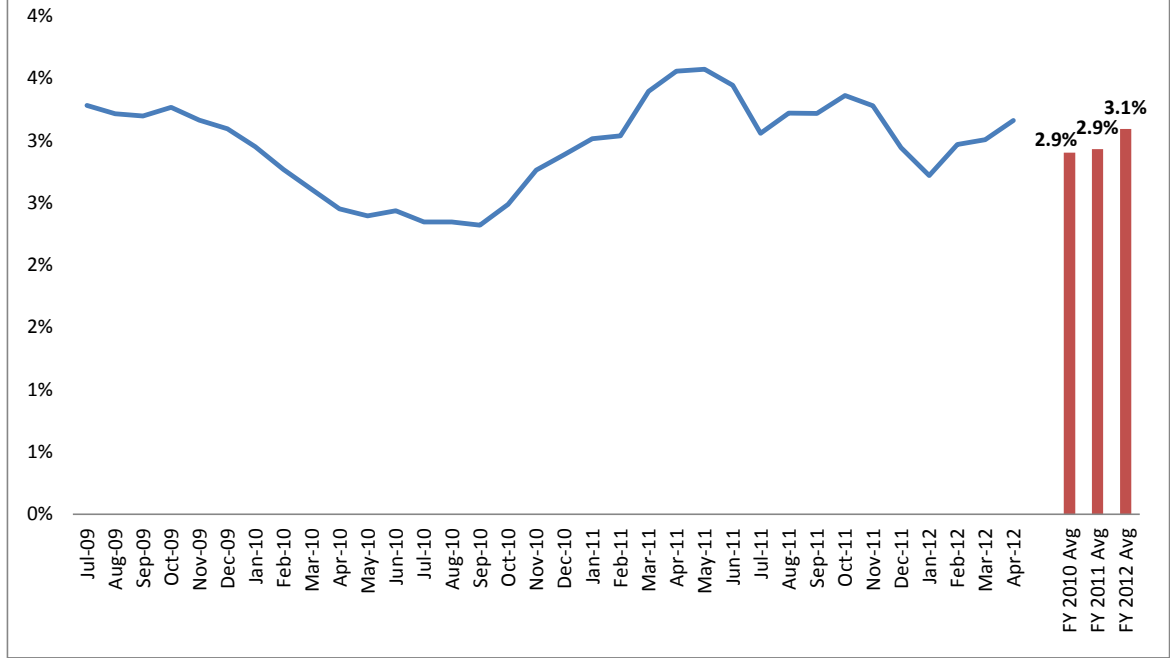
Data OFM Forecasting Division

Percent of WorkFirst Adults in Commerce Work Programs

	Total # of TANF Adults	# of TANF Adults Who Started Commerce Work Program (CJ or JC)	% of TANF Adults Who Started Commerce Work Program (CJ or JC)
Jul-09	44,862	1,471	3.3%
Aug-09	45,359	1,457	3.2%
Sep-09	46,327	1,480	3.2%
Oct-09	47,398	1,547	3.3%
Nov-09	47,549	1,503	3.2%
Dec-09	48,127	1,488	3.1%
Jan-10	48,241	1,422	2.9%
Feb-10	47,856	1,324	2.8%
Mar-10	48,501	1,264	2.6%
Apr-10	48,745	1,194	2.4%
May-10	48,679	1,166	2.4%
Jun-10	48,866	1,190	2.4%
Jul-10	49,076	1,151	2.3%
Aug-10	50,250	1,178	2.3%
Sep-10	50,878	1,180	2.3%
Oct-10	51,354	1,277	2.5%
Nov-10	50,915	1,406	2.8%
Dec-10	52,008	1,500	2.9%
Jan-11	52,091	1,569	3.0%
Feb-11	45,001	1,366	3.0%
Mar-11	43,985	1,492	3.4%
Apr-11	42,764	1,520	3.6%
May-11	41,527	1,483	3.6%
Jun-11	41,110	1,415	3.4%
Jul-11	40,569	1,240	3.1%
Aug-11	40,627	1,308	3.2%
Sep-11	40,640	1,307	3.2%
Oct-11	40,540	1,362	3.4%
Nov-11	40,064	1,313	3.3%
Dec-11	40,173	1,182	2.9%
Jan-12	40,211	1,093	2.7%
Feb-12	40,037	1,188	3.0%
Mar-12	39,904	1,199	3.0%
Apr-12	39,113	1,236	3.2%
FY 2010 Avg	47,543	1,376	2.9%
FY 2011 Avg	47,580	1,378	2.9%
FY 2012 Avg	40,188	1,243	3.1%

Percent of TANF Adults Who Started a Commerce Work Prep. Program

	Total # of TANF Adults	# of TANF Adults Who Started Commerce Work Program (CJ or JC)	% of TANF Adults Who Started Commerce Work Program (CJ or JC)
--	------------------------	---	---



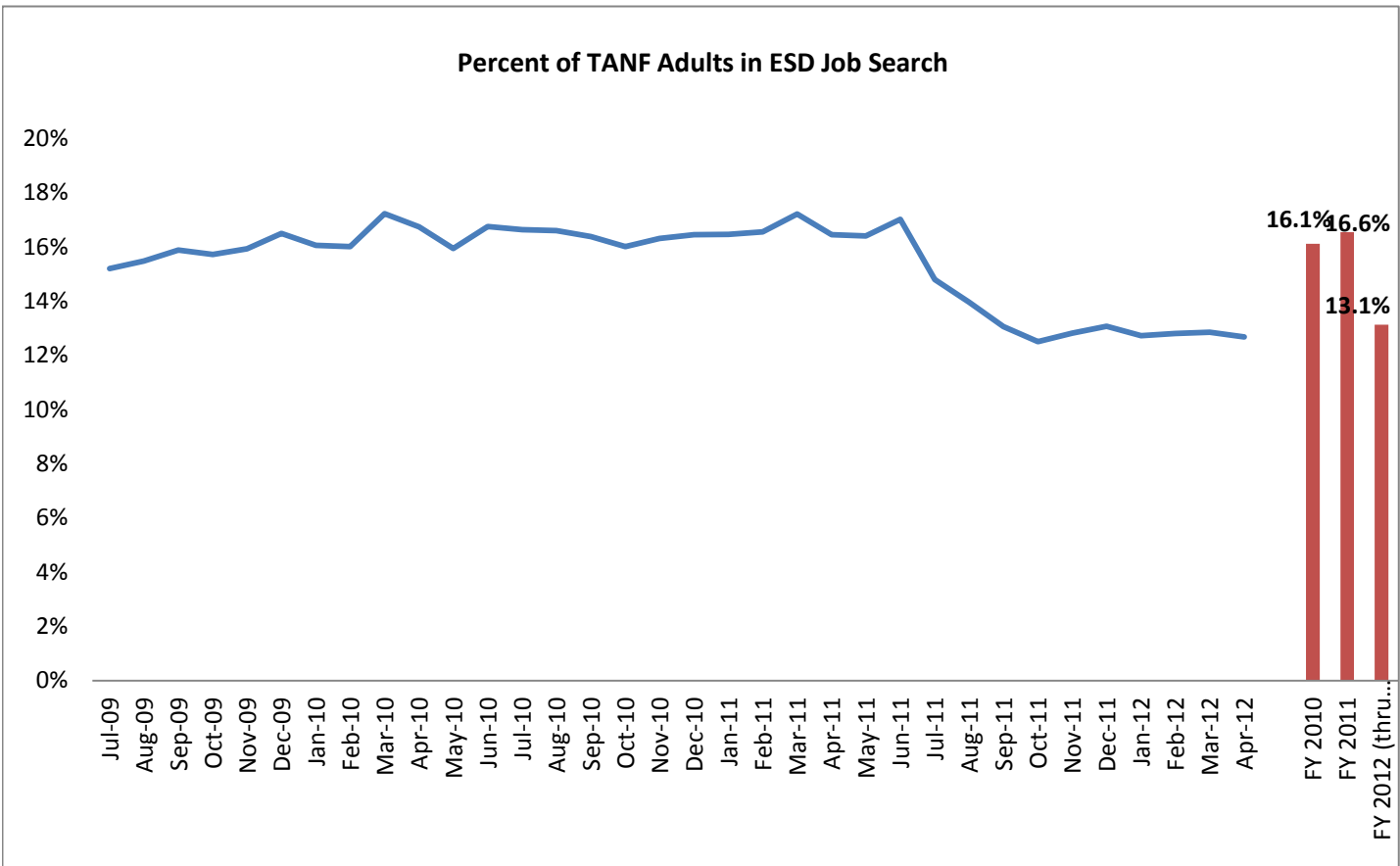
Performance**Measure** Percent of TANF adults in Job Ready" pathway**Measure Domain** Adults Are Doing Well Economically**Measure Type** Output measure**Formula** Number of TANF adults assigned to EDS Job Search in the month as indicated by eJAS component code JS, divided by total number of TANF adults in the month**Data Source** DSHS-ESA-EMAPS, ACES and eJAS data systems**Data** OFM Forecasting Division, ACES & eJAS data systems**TANF Adults Engaged in ESD Job Search**

Date: July 3, 2012

Month	Total TANF Adults	# In ESD Job Search	% in ESD Job Search
Jul-09	44,862	5,339	15.2%
Aug-09	45,359	5,473	15.5%
Sep-09	46,327	5,730	15.9%
Oct-09	47,398	5,827	15.7%
Nov-09	47,549	5,988	15.9%
Dec-09	48,127	6,183	16.5%
Jan-10	48,241	5,956	16.1%
Feb-10	47,856	5,854	16.0%
Mar-10	48,501	6,477	17.2%
Apr-10	48,745	6,275	16.7%
May-10	48,679	5,969	16.0%
Jun-10	48,866	6,360	16.8%
Jul-10	49,076	6,363	16.6%
Aug-10	50,250	6,536	16.6%
Sep-10	50,878	6,477	16.4%
Oct-10	51,354	6,397	16.0%
Nov-10	50,915	6,541	16.3%
Dec-10	52,008	6,855	16.5%
Jan-11	52,091	6,840	16.5%
Feb-11	45,001	5,932	16.6%
Mar-11	43,985	6,013	17.2%
Apr-11	42,764	5,576	16.5%
May-11	41,527	5,425	16.4%
Jun-11	41,110	5,668	17.0%
Jul-11	40,569	4,850	14.8%
Aug-11	40,627	4,558	14.0%
Sep-11	40,640	4,188	13.1%
Oct-11	40,540	3,973	12.5%
Nov-11	40,064	3,996	12.8%

Month	Total TANF	# In ESD Job	% in ESD Job
	Adults	Search	Search
Dec-11	40,173	3,988	13.1%
Jan-12	40,211	3,850	12.7%
Feb-12	40,037	3,872	12.8%
Mar-12	39,904	3,837	12.9%
Apr-12	39,113	3,708	12.7%

FY 2010	47,543	5,953	16.1%
FY 2011	47,580	6,219	16.6%
2 (thru Apr. 12)	40,188	4,082	13.1%



Performance Measure Percent of TANF adults participating in federally countable activities

Measure Domain Adults Are Doing Well Economically

Measure Type Output measure

Formula Number of TANF adults participating in federally countable activities, divided by number of total TANF adults in the month

Data Source DSHS-ESA-EMAPS, eJAS data system

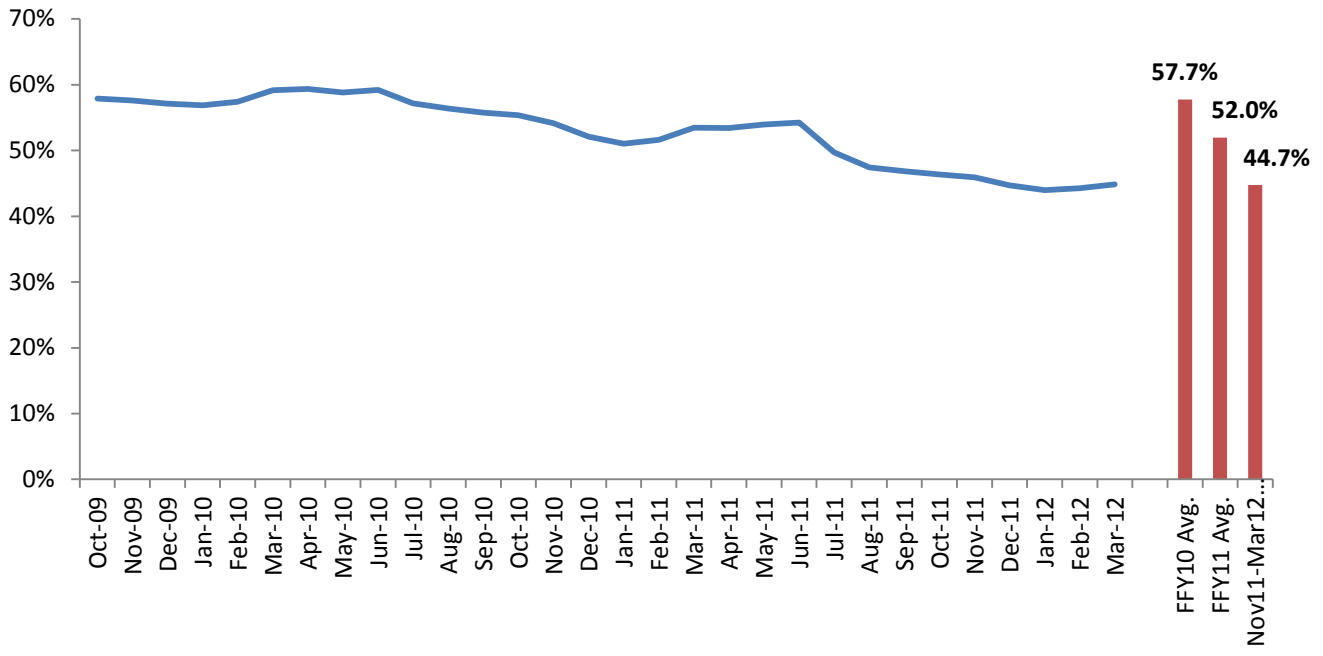
Data

TANF Adults Participating in Federal Countable Activities

Source: ESA-EMAPS as of June 2012 eJAS data load

Month	Total TANF Adults	TANF Adults Participating in Federal Countable Activities	% Participating in Countable Activities
Oct-09	47,405	27,457	57.9%
Nov-09	47,559	27,409	57.6%
Dec-09	48,137	27,502	57.1%
Jan-10	48,249	27,443	56.9%
Feb-10	47,871	27,476	57.4%
Mar-10	48,513	28,716	59.2%
Apr-10	48,757	28,936	59.4%
May-10	48,688	28,643	58.8%
Jun-10	48,877	28,940	59.2%
Jul-10	49,094	28,062	57.2%
Aug-10	50,265	28,342	56.4%
Sep-10	50,887	28,362	55.7%
Oct-10	51,365	28,438	55.4%
Nov-10	50,921	27,573	54.2%
Dec-10	52,014	27,115	52.1%
Jan-11	52,087	26,596	51.1%
Feb-11	45,007	23,241	51.6%
Mar-11	43,991	23,526	53.5%
Apr-11	42,772	22,843	53.4%
May-11	41,536	22,407	54.0%
Jun-11	41,118	22,309	54.3%
Jul-11	40,581	20,172	49.7%
Aug-11	40,641	19,283	47.5%
Sep-11	40,645	19,050	46.9%
Oct-11	40,550	18,800	46.4%
Nov-11	40,073	18,409	45.9%
Dec-11	40,182	17,966	44.7%
Jan-12	40,222	17,680	44.0%
Feb-12	40,044	17,729	44.3%
Mar-12	39,927	17,910	44.9%
FFY10 Avg.	48,692	28,107	57.7%
FFY11 Avg.	45,223	23,546	52.0%
ov11-Mar12 Avg.	40,090	17,939	44.7%

Percent of TANF Adults Participating in Federal Countable Activities



Performance

Measure Percent of TANF cases meeting federal all-family and Two-parent family work participation requirements (WPR)

Measure Domain Adults Are Doing Well Economically

Measure Type Immediate outcome measure

All-Family Rate: Number of TANF and SSP MOE families that include a work-eligible individual who is participating a minimum average of 30 hours per week in federally defined work activities; divided by the number of TANF and SSP MOE families that include a work-eligible individual, minus the number of families that are in their first 3 months of sanction (limited to 3 out of the last 12 months), and single custodial parents caring for a child under age 1 (limited to 12 months in that parent’s lifetime). Both parents in two-parent families are included in this calculation.

Formula

Two-Parent Rate: number of two-parent families with two work-eligible individuals who are participating a minimum average of 35 hours per week (combined between the two-parents) in federally defined work activities; divided by the number of TANF and SSP MOE families that include a work-eligible individual, minus the number of families that are in their first 3 months of sanction (limited to 3 out of the last 12 months).

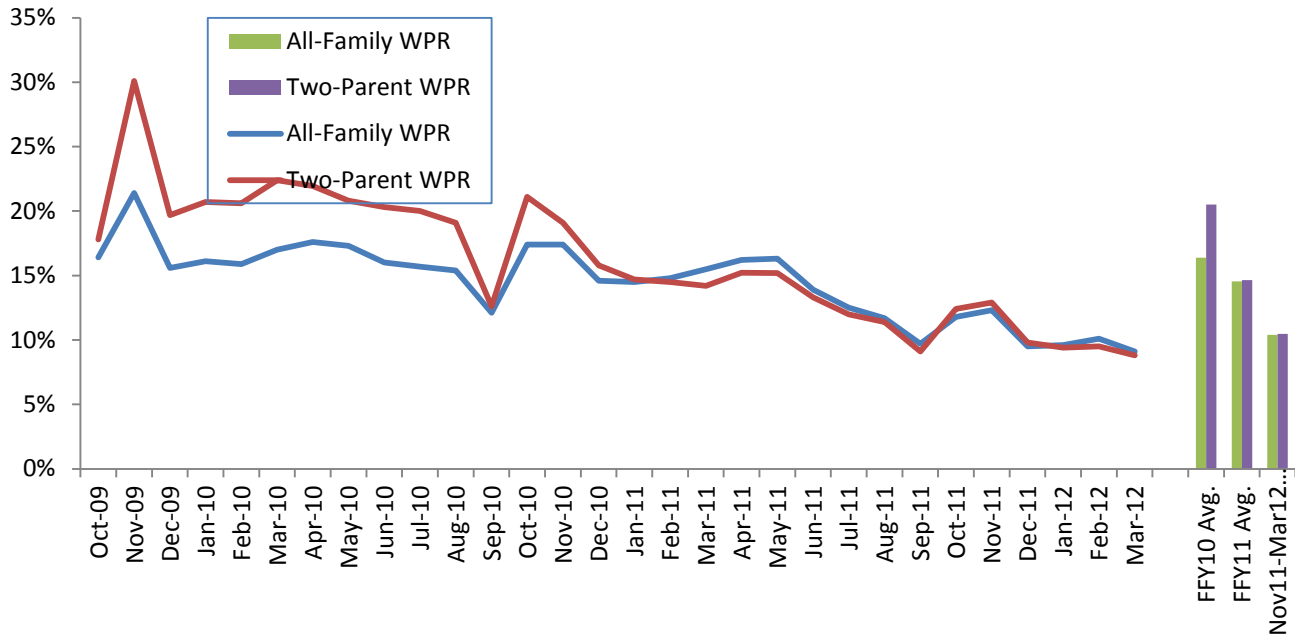
Data Source DSHS-RDA

Data

Month	All-Family WPR			Two-Parent WPR		
	# of TANF Cases Required to Participate	# of Cases Participating at Federally Qualified Standards	All-Family WPR	# of TANF Cases Required to Participate	# of Cases Participating at Federally Qualified Standards	Two-Parent WPR
Oct-09	34498	5658	16.4%	5815	1035	17.8%
Nov-09	34740	7444	21.4%	5923	1781	30.1%
Dec-09	34553	5379	15.6%	6025	1188	19.7%
Jan-10	34795	5613	16.1%	6042	1252	20.7%
Feb-10	34503	5490	15.9%	5981	1230	20.6%
Mar-10	35013	5961	17.0%	6147	1374	22.4%
Apr-10	35144	6202	17.6%	6087	1336	22.0%
May-10	35185	6091	17.3%	6024	1252	20.8%
Jun-10	36023	5749	16.0%	6146	1249	20.3%
Jul-10	36791	5772	15.7%	6226	1248	20.0%
Aug-10	36847	5665	15.4%	6474	1235	19.1%
Sep-10	36476	4422	12.1%	6297	791	12.6%
Oct-10	36386	6345	17.4%	6230	1312	21.1%
Nov-10	35564	6173	17.4%	6187	1183	19.1%
Dec-10	36211	5272	14.6%	6474	1026	15.8%
Jan-11	37126	5366	14.5%	6690	982	14.7%
Feb-11	31650	4697	14.8%	6001	873	14.5%
Mar-11	30684	4765	15.5%	5844	828	14.2%
Apr-11	29589	4799	16.2%	5549	844	15.2%
May-11	28716	4688	16.3%	5406	820	15.2%
Jun-11	28562	3983	13.9%	5256	698	13.3%
Jul-11	28695	3600	12.5%	5189	625	12.0%
Aug-11	28934	3374	11.7%	5202	593	11.4%
Sep-11	28944	2799	9.7%	5150	469	9.1%
Oct-11	28944	3418	11.8%	5195	644	12.4%
Nov-11	28575	3514	12.3%	5114	662	12.9%
Dec-11	27756	2636	9.5%	5149	507	9.8%
Jan-12	27848	2678	9.6%	5278	494	9.4%
Feb-12	27751	2811	10.1%	5311	507	9.5%
Mar-12	27661	2528	9.1%	5323	467	8.8%
FFY10 Avg.	35,381	5,787	16.4%	6,099	1,248	20.5%

Month	All-Family WPR			Two-Parent WPR		
	# of TANF Cases Required to Participate	# of Cases Participating at Federally Qualified Standards	All-Family WPR	# of TANF Cases Required to Participate	# of Cases Participating at Federally Qualified Standards	Two-Parent WPR
FFY11 Avg. Nov11-Mar12	31,755	4,655	14.5%	5,765	854	14.6%
Avg.	28,089	2,931	10.4%	5,228	547	10.5%

TANF Cases Meeting Federal Work Participation Requirements (WPR)



Performance Measure **Percent of WorkFirst adults who exited TANF with employment**

Measure Domain Adults are doing well economically

Measure Type Immediate outcome measure

Number of WorkFirst adults exiting TANF in a given quarter who had employment reported to the Unemployment Insurance system during that quarter, divided by total number of adults exiting TANF in the same quarter

Formula

Data Source OFM Forecasting Division, ACES and ESD UI wage records

Data

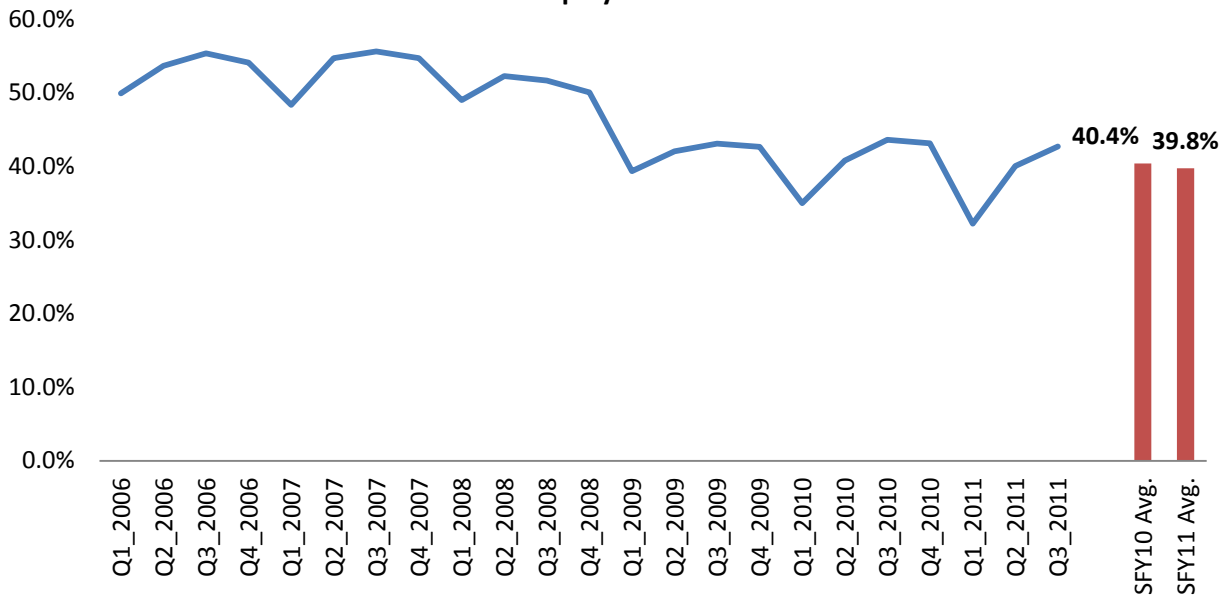
Exits with Employment Measured in UI Wage Records

Date: May 2012

Calendar Quarter	# of Adults Exits		% of Exits with Employment
	With Employment	Total Exits ¹	
Q1_2006	7,497	15,020	49.9%
Q2_2006	8,109	15,110	53.7%
Q3_2006	8,062	14,559	55.4%
Q4_2006	7,716	14,266	54.1%
Q1_2007	6,325	13,081	48.4%
Q2_2007	8,150	14,904	54.7%
Q3_2007	7,952	14,298	55.6%
Q4_2007	7,151	13,069	54.7%
Q1_2008	5,880	12,002	49.0%
Q2_2008	7,120	13,623	52.3%
Q3_2008	6,929	13,414	51.7%
Q4_2008	6,656	13,296	50.1%
Q1_2009	4,730	12,013	39.4%
Q2_2009	5,801	13,801	42.0%
Q3_2009	6,290	14,595	43.1%
Q4_2009	6,086	14,273	42.6%
Q1_2010	4,751	13,566	35.0%
Q2_2010	6,221	15,255	40.8%
Q3_2010	6,886	15,781	43.6%
Q4_2010	6,534	15,152	43.1%
Q1_2011	6,839	21,221	32.2%
Q2_2011	6,825	17,045	40.0%
Q3_2011	6,720	15,733	42.7%
SFY10 Avg.	5,837	14,422	40.4%
SFY11 Avg.	6,771	17,300	39.8%

¹Exits: An exit occurs during months when adults have no TANF income following a month in which they did have TANF income. Quarters are calendar quarters and years are calendar years.

Percent of WorkFirst Adults Who Exited in the Calendar Quarter with Employment



Performance Measure Percent WorkFirst adults employed in WA state during first three calendar quarters after leaving WorkFirst services

Measure Domain Adults are doing well economically

Measure Type Immediate outcome measure

Formula Number of WorkFirst adults with employment records in UI Wage files in any of the first three quarters after leaving WorkFirst services, divided by number leaving services in a group defined by a set of EJAS codes who have not had the same services for four or more consecutive months

Data Source OFM Forecasting Division, ACES, eJAS, and ESD UI wage records

Data

Employment Rates in the First Three Quarters After Exiting WorkFirst Services

Date: July 3, 2012

Month	Employment Rate in Q1, Q2, or Q3 After Exiting Vocational Ed. Service	Employment Rate in Q1, Q2, or Q3 After Exiting Job Search	Employment Rate in Q1, Q2, or Q3 After Exiting CJ	# of Adults Exiting Vocational Ed. Services ¹	# of Adults Exiting ESD Job Search (JS)	# of Adults Exiting Community Jobs (CJ) ¹
Jul-08	53.6%	58.4%	48.7%	345	1,520	279
Aug-08	55.0%	62.2%	48.9%	442	1,557	227
Sep-08	56.1%	62.2%	52.3%	296	1,524	239
Oct-08	49.1%	57.1%	48.8%	348	1,513	254
Nov-08	47.5%	56.4%	43.0%	259	1,297	179
Dec-08	47.7%	54.0%	48.0%	499	1,534	244
Jan-09	51.9%	56.5%	42.6%	343	1,709	256
Feb-09	49.4%	57.0%	48.1%	334	1,510	283
Mar-09	52.4%	55.2%	50.3%	592	1,852	318
Apr-09	50.2%	54.2%	48.7%	488	1,904	343
May-09	47.8%	57.9%	50.3%	416	1,729	380
Jun-09	53.4%	56.6%	49.7%	993	2,136	374
Jul-09	52.8%	55.8%	41.7%	371	1,897	326
Aug-09	48.6%	55.9%	45.3%	510	1,979	360
Sep-09	44.5%	53.8%	46.5%	380	2,198	359
Oct-09	50.4%	56.6%	50.3%	397	2,067	376
Nov-09	45.9%	54.4%	42.4%	366	1,834	330
Dec-09	45.2%	51.8%	44.2%	699	2,297	353
Jan-10	52.2%	56.9%	49.1%	406	1,906	330
Feb-10	50.1%	55.5%	49.8%	395	1,841	329
Mar-10	50.3%	57.3%	48.5%	825	2,328	340
Apr-10	50.3%	56.2%	49.8%	614	2,258	323
May-10	51.2%	56.9%	50.0%	520	2,065	284
Jun-10	54.8%	56.3%	45.7%	1,197	2,232	300
Jul-10	54.0%	56.7%	50.2%	461	2,267	255
Aug-10	49.9%	56.6%	46.0%	693	2,371	289
Sep-10	51.7%	56.4%	44.8%	482	2,328	281

Month	Employment Rate in Q1, Q2, or Q3 After Exiting Vocational Ed. Service	Employment Rate in Q1, Q2, or Q3 After Exiting Job Search	Employment Rate in Q1, Q2, or Q3 After Exiting CJ	# of Adults Exiting Vocational Ed. Services ¹	# of Adults Exiting ESD Job Search (JS)	# of Adults Exiting Community Jobs (CJ) ¹
Oct-10	45.6%	57.8%	47.9%	489	2,119	267
Nov-10	54.0%	55.3%	52.6%	376	2,093	289
Dec-10	53.7%	54.3%	50.3%	739	2,464	320
Jan-11	52.2%	56.0%	52.5%	619	2,536	587
Feb-11	58.4%	58.7%	49.3%	365	1,985	373
Mar-11	56.3%	61.4%	49.9%	743	2,160	409
FY 2009 Avg	51.2%	57.3%	48.3%	5,355	19,785	3,376
FY 2010 Avg	49.7%	55.6%	46.9%	6,680	24,902	4,010

Data notes:

¹ Including any of these eJAS codes: VE, HW, PE, DC, or VU

