

# Education Funding Overview

House Office of Program Research

Senate Committee Services

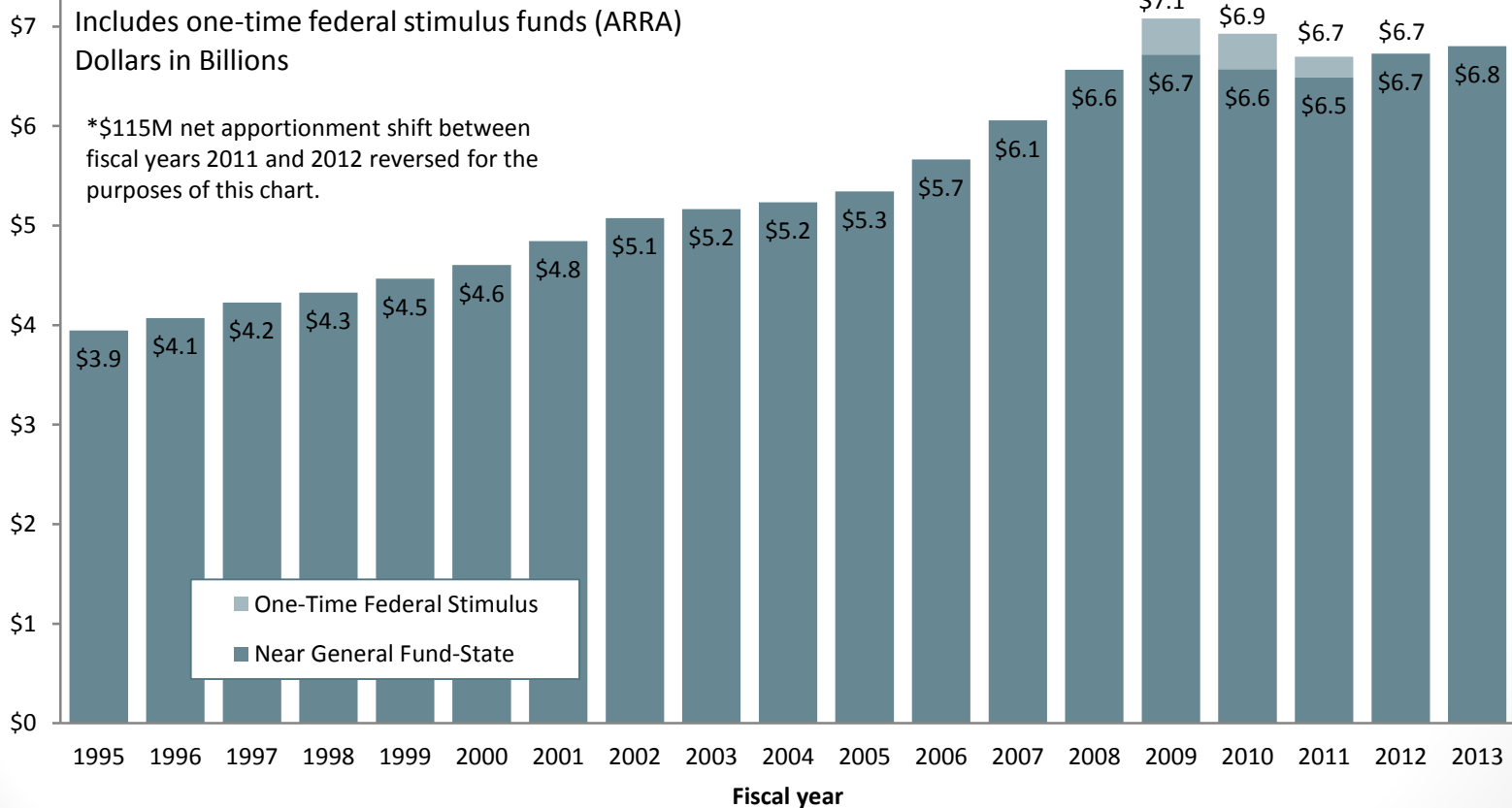
Office of Financial Management

August 28, 2012

# HISTORY OF STATE FUNDING FOR K-12 EDUCATION: 1995 – PRESENT

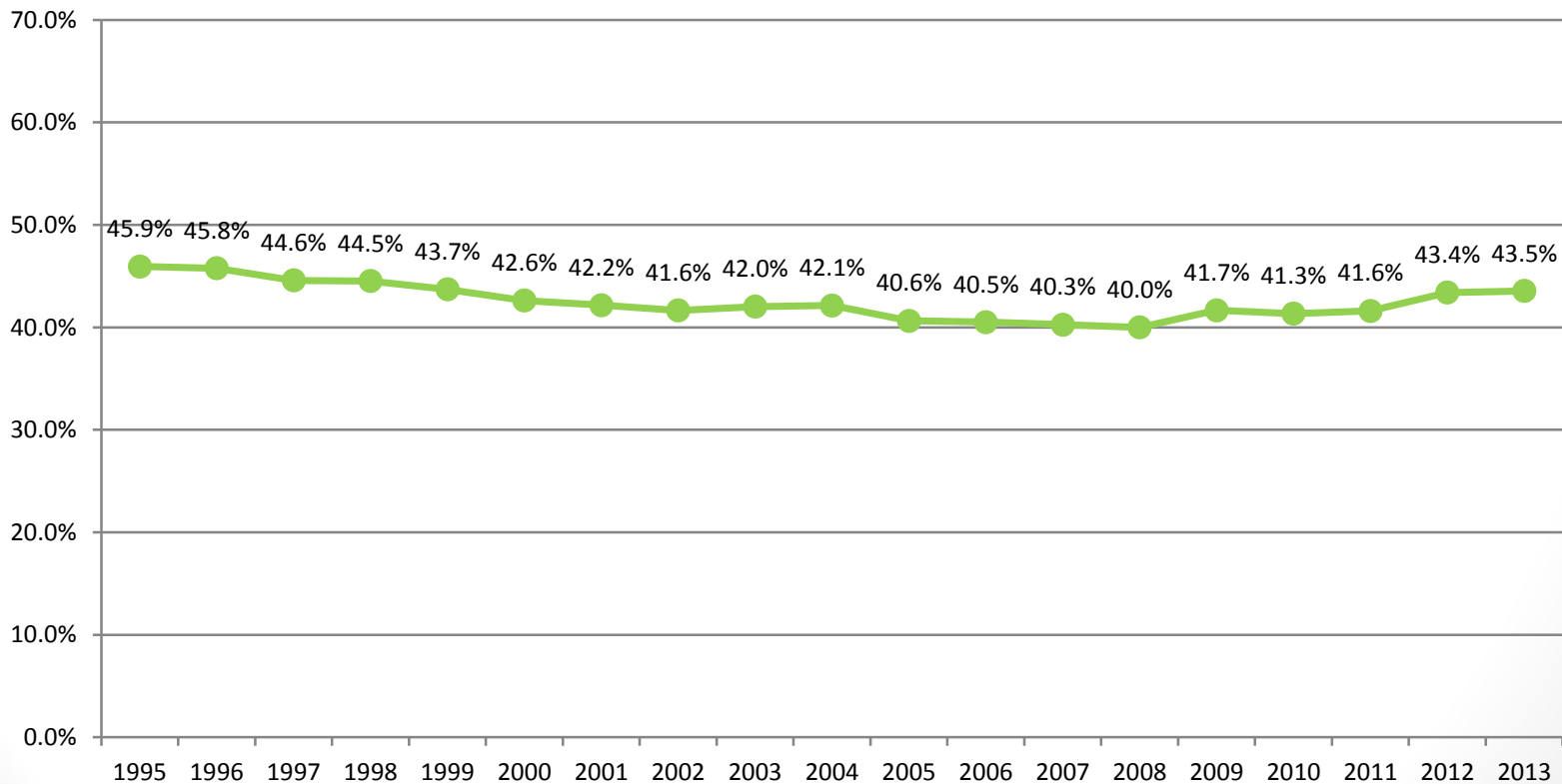
# History of State Funding: 1995 to Present

## State Funding for K-12 Public Schools: 1995 to Present



# Percent of State Budget Over Time: 1995 to Present

## State Funding for K-12 Public Schools as a Percent of Total Near General Fund-State 1995 to Present



# CURRENT & HISTORICAL K-12 FUNDING: IN TOTAL AND PER PUPIL

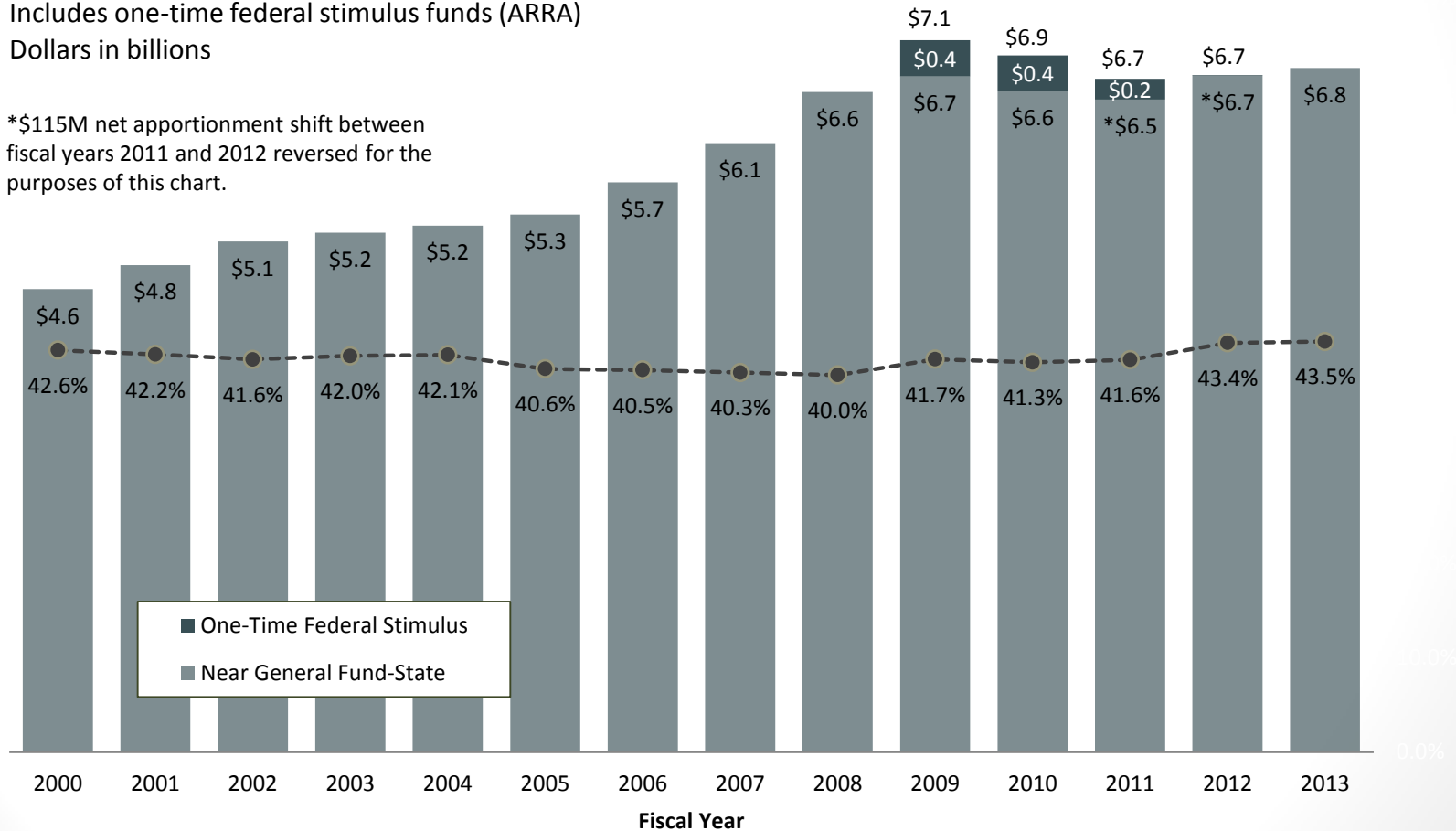
# Current and Historical State Funding: K-12 Public Schools

## State Funding for K-12 Public Schools and as a Percent of Total Near General Fund

Includes one-time federal stimulus funds (ARRA)

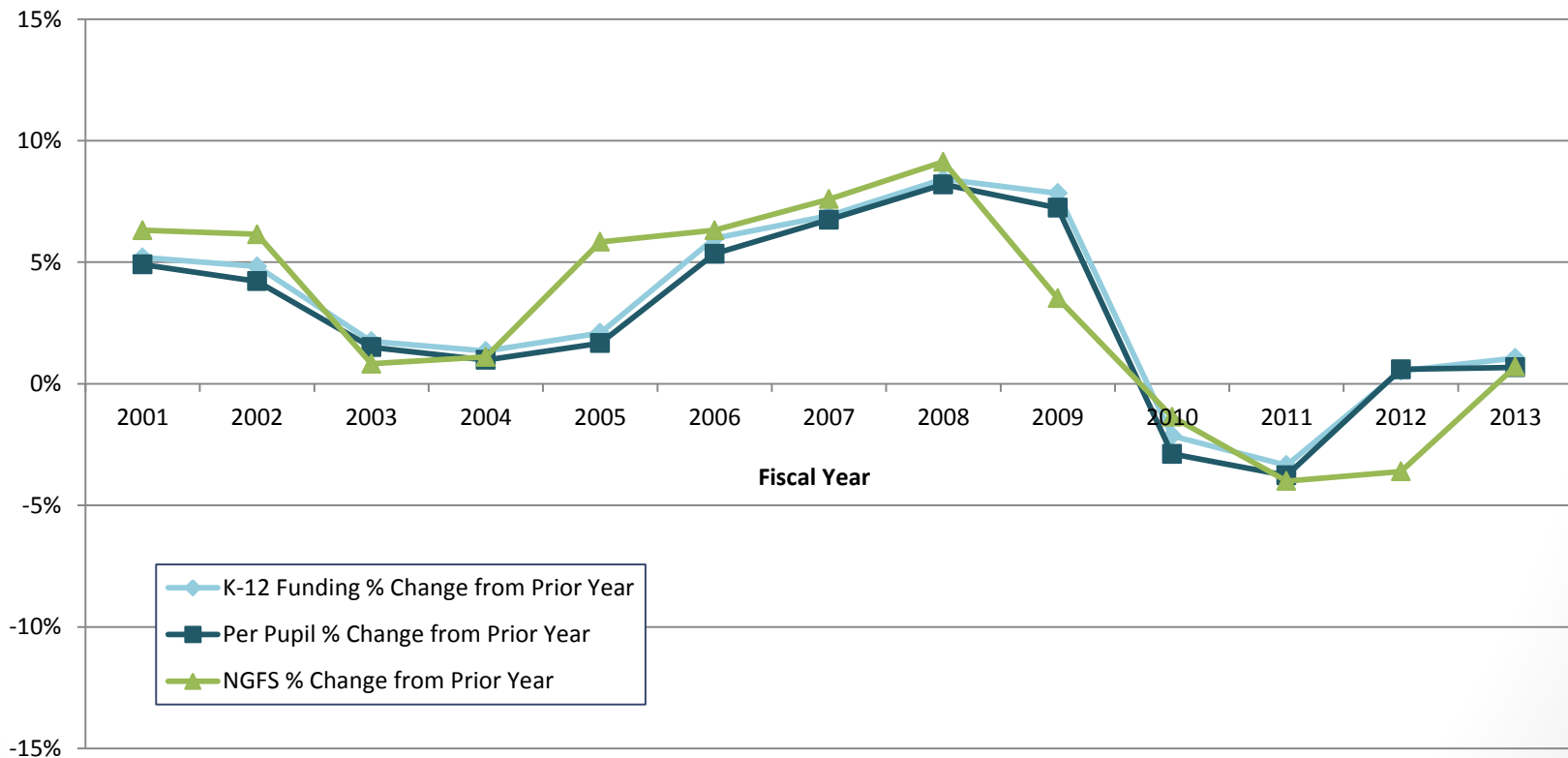
Dollars in billions

\*\$115M net apportionment shift between  
fiscal years 2011 and 2012 reversed for the  
purposes of this chart.



# On average, state funding for K-12 Public Education has increased 3.1% annually

## Percent Change from Prior Year: K-12 State Funding, K-12 Per Pupil and Total NGFS

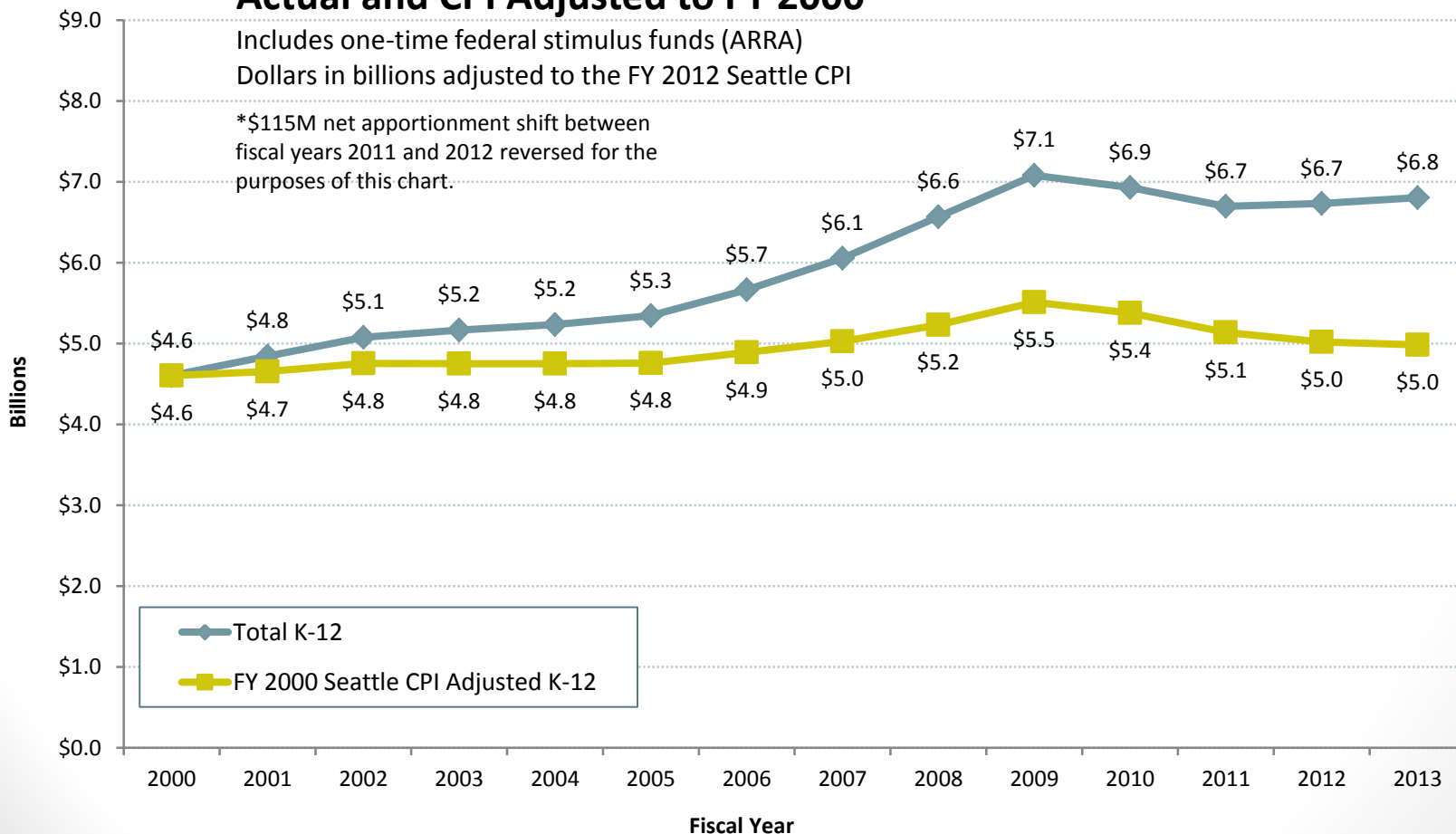


# Comparison of Nominal and CPI Adjusted State Funding for K-12 Public Schools

## State Funding for K-12 Public Schools Actual and CPI Adjusted to FY 2000

Includes one-time federal stimulus funds (ARRA)  
Dollars in billions adjusted to the FY 2012 Seattle CPI

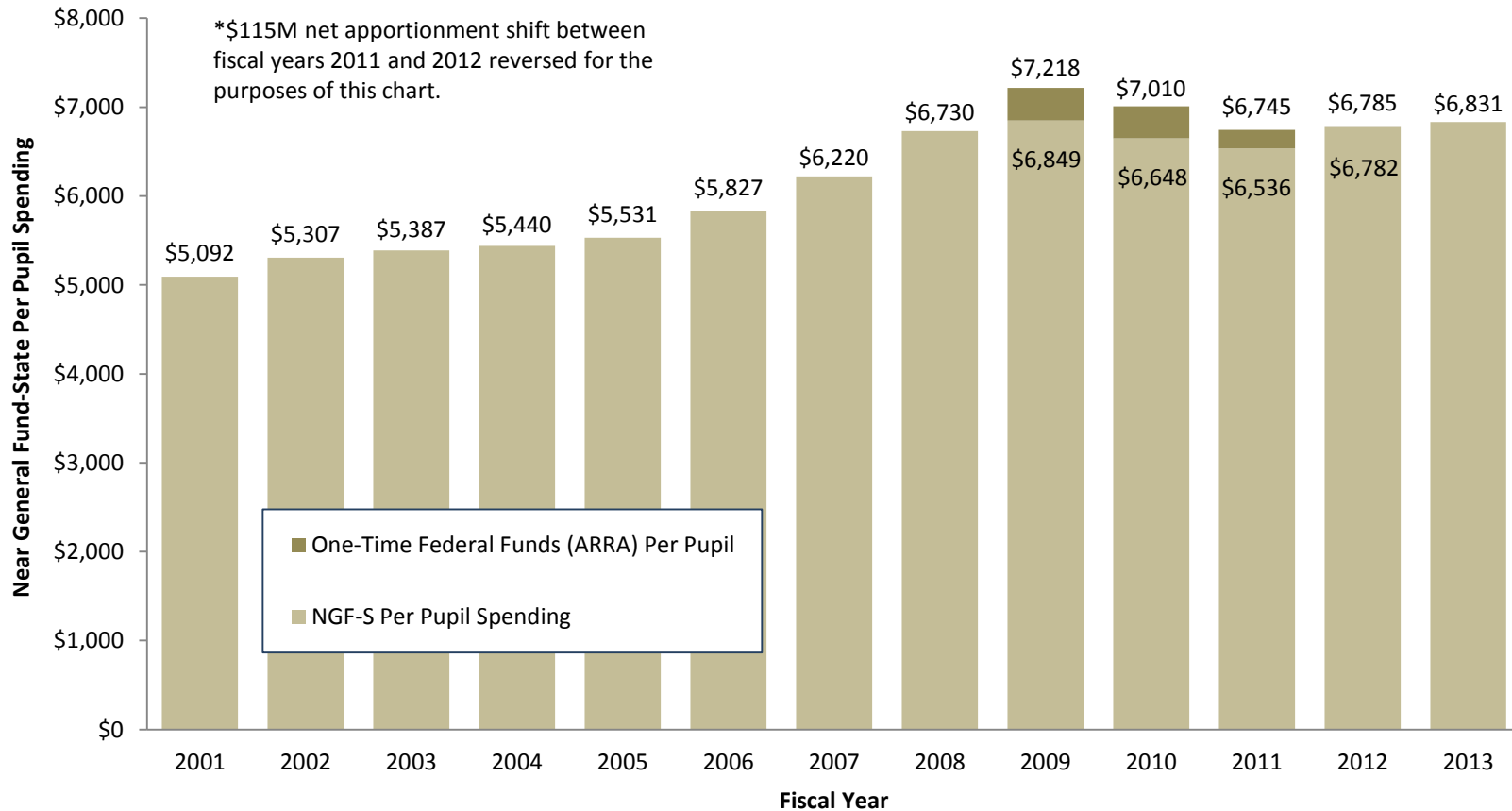
\*\$115M net apportionment shift between fiscal years 2011 and 2012 reversed for the purposes of this chart.





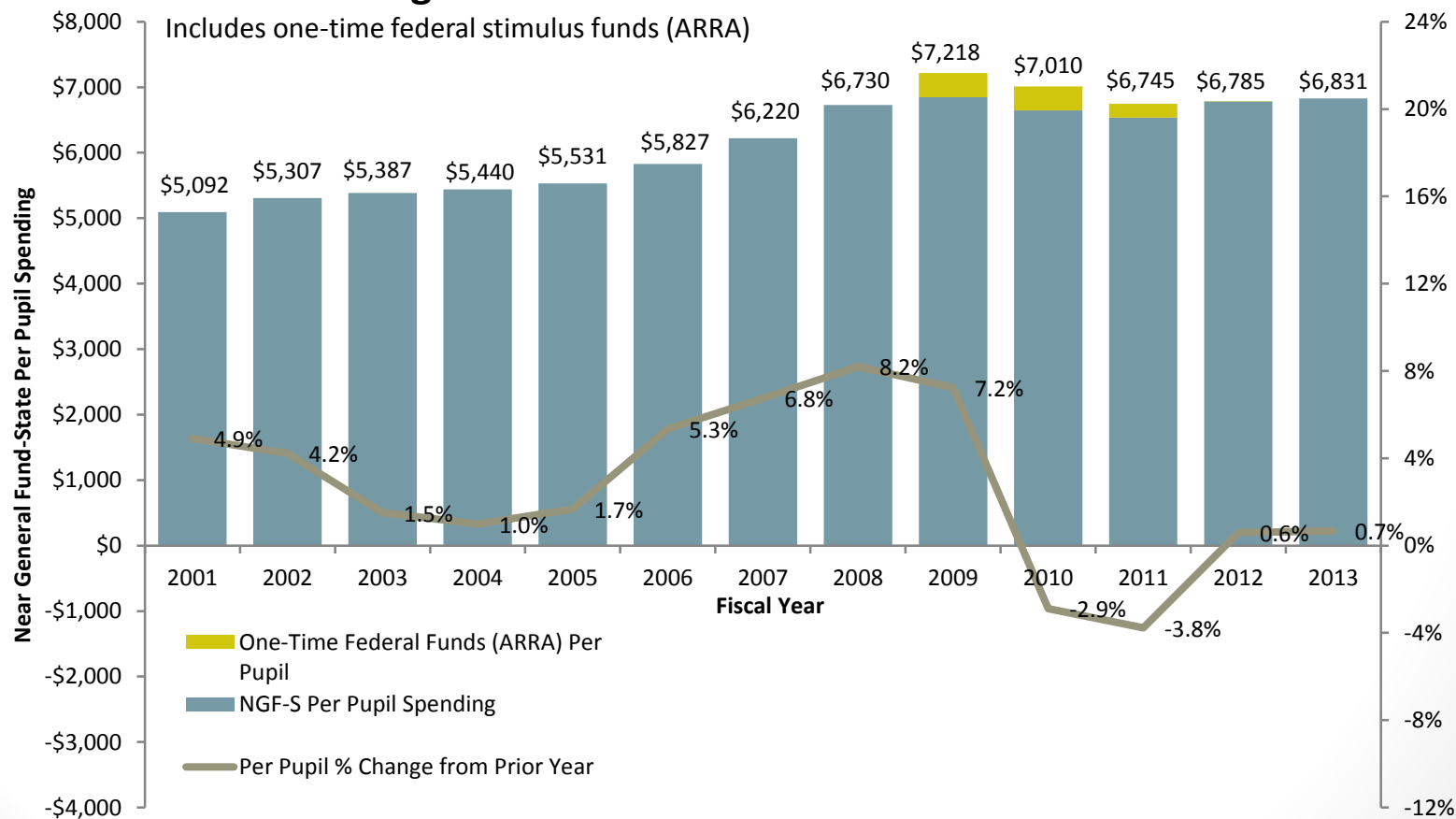
# State Per Pupil Funding

## Per Pupil State Spending for K-12 Public Schools Includes one-time federal stimulus funds (ARRA)



# Percent Change in State Per Pupil Funding

## Per Pupil State Spending for K-12 Public Schools and Percent Change from Prior Fiscal Year



# SCHOOL DISTRICT FUNDING BY SOURCE: CURRENT & HISTORICAL

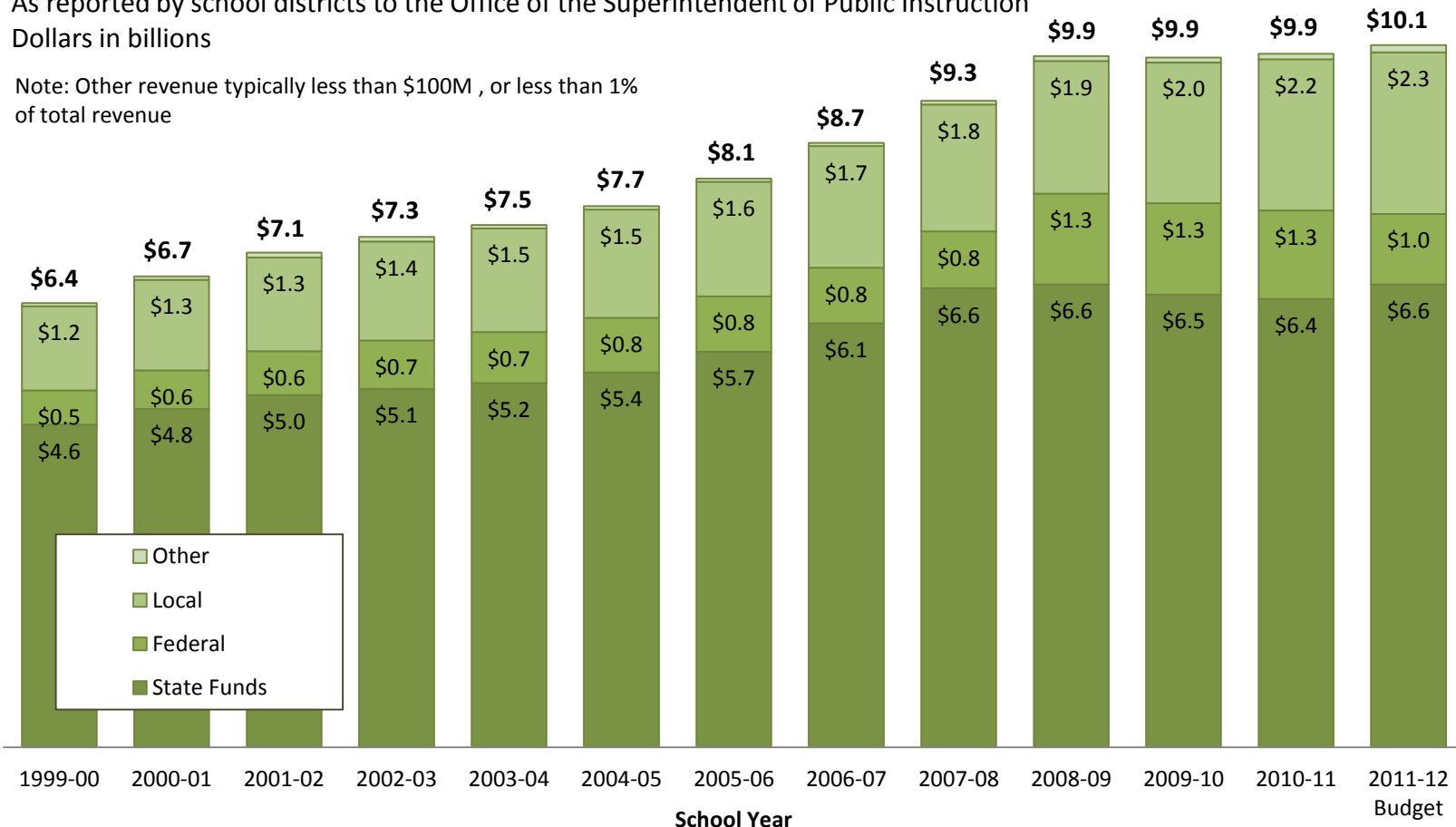
# School District Funding by Source: Current & Historical

## Total K-12 Public Schools Funding by Source

As reported by school districts to the Office of the Superintendent of Public Instruction

Dollars in billions

Note: Other revenue typically less than \$100M , or less than 1% of total revenue



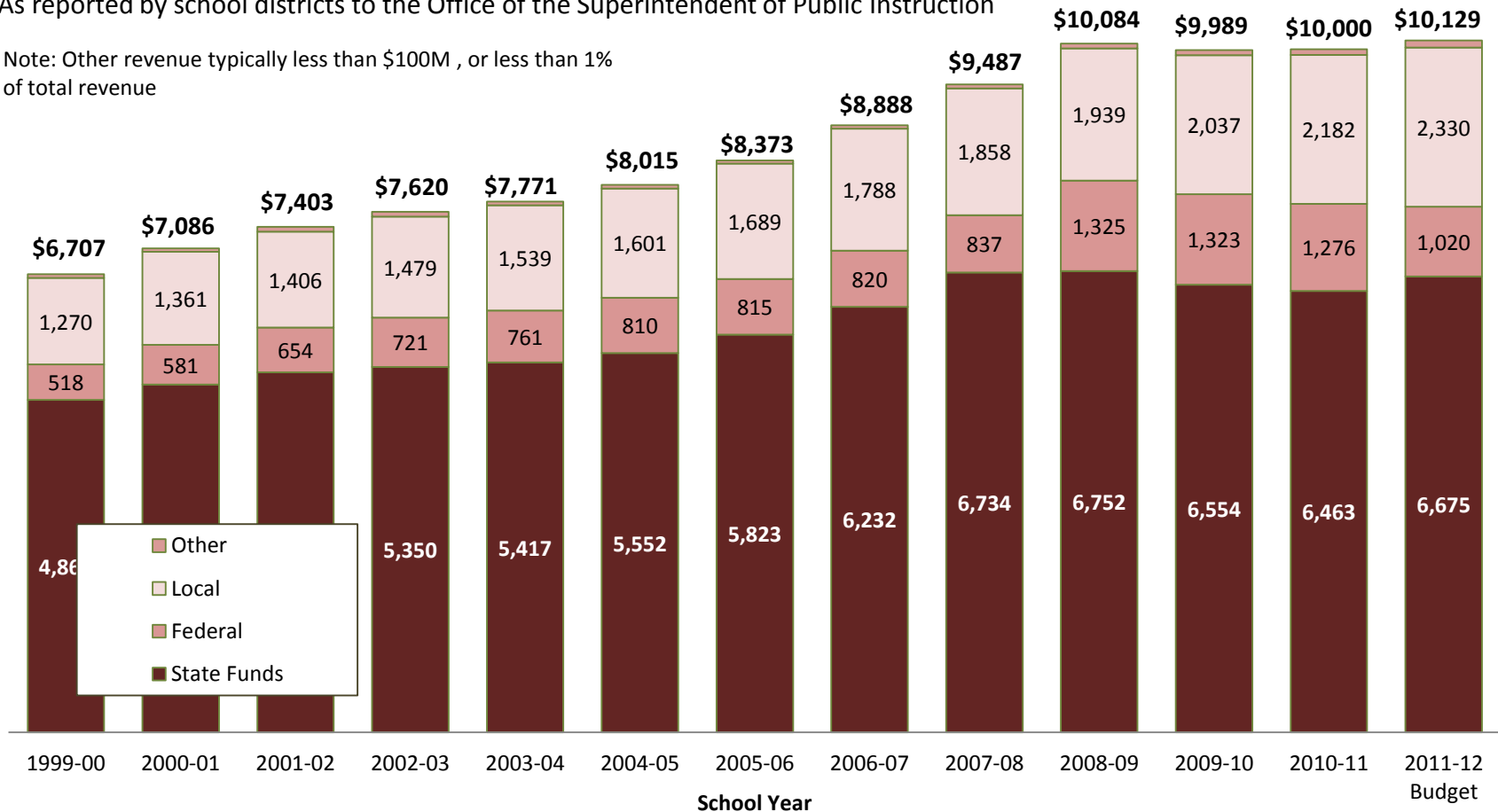
Note: School districts' federal funds includes one-time federal stimulus funds.

# School District Funding by Source: Current & Historical

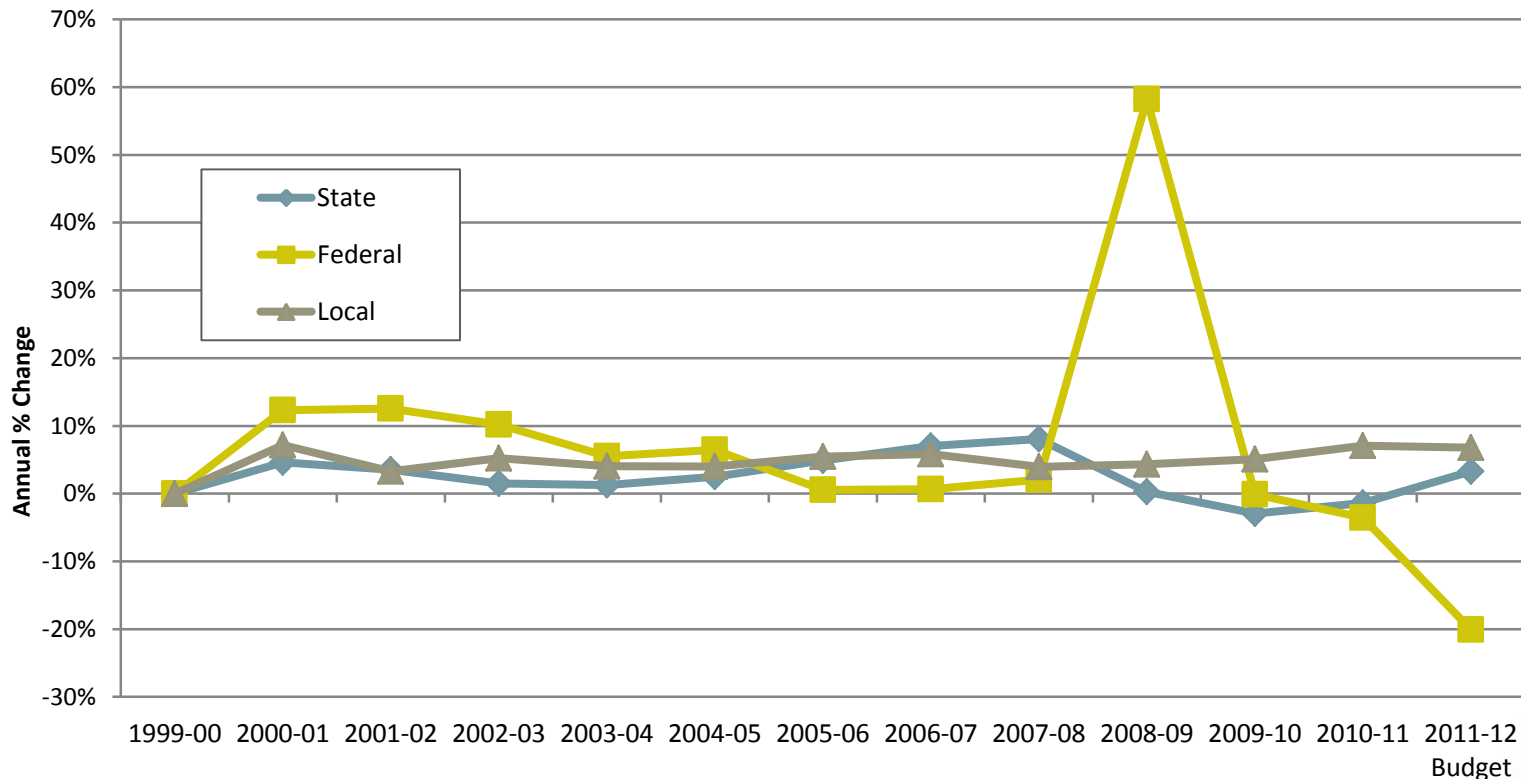
## K-12 Public Schools Per-Pupil Funding by Source

As reported by school districts to the Office of the Superintendent of Public Instruction

Note: Other revenue typically less than \$100M , or less than 1% of total revenue



# Annual Change of Per-Pupil Funding by Major Source



Average annual change over period:

State = 2.7%

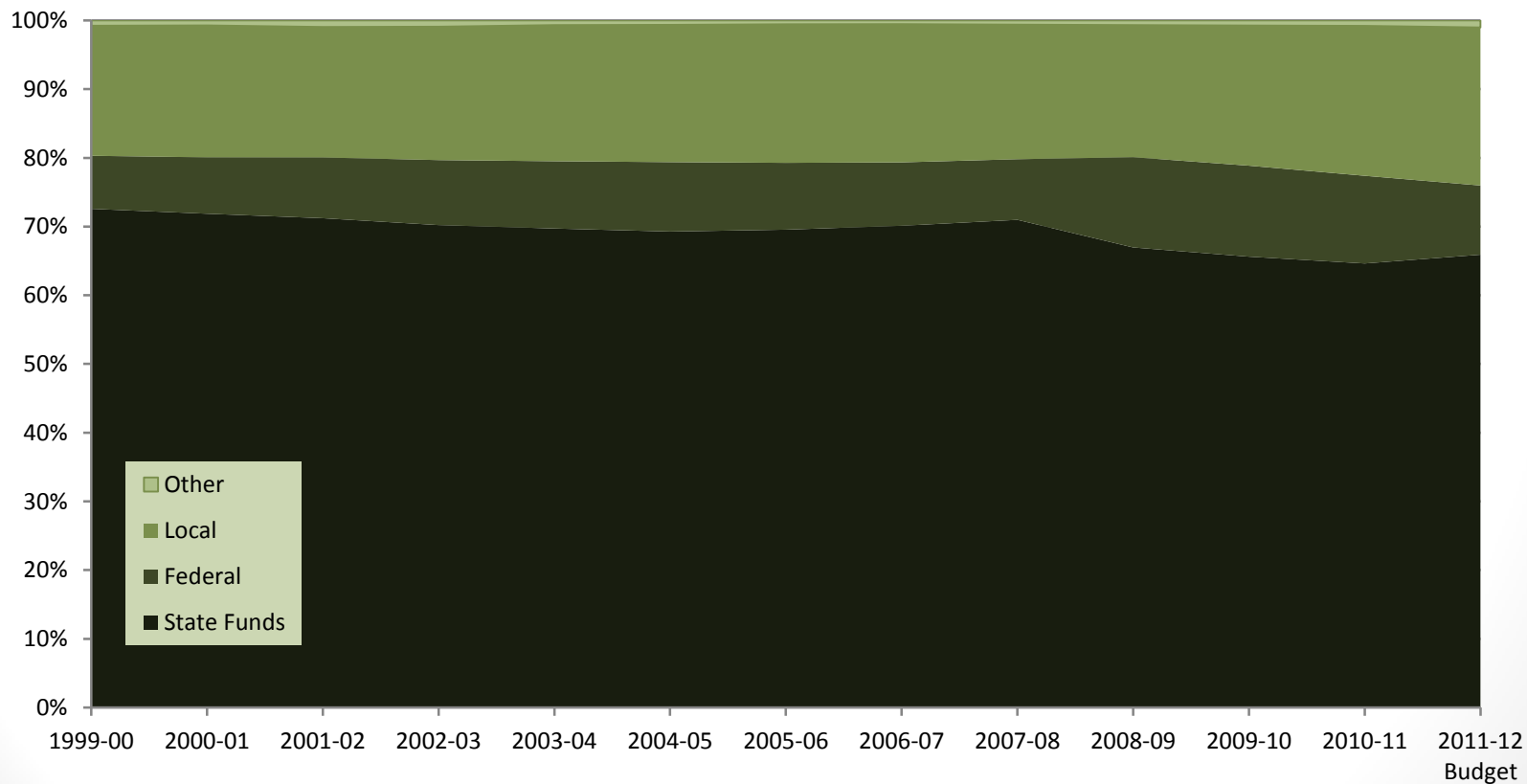
Federal = 7.1%

Local = 5.2%

# School District Funding by Source: Current & Historical

## K-12 Public Schools Funding by Source as a % of Total

As reported by school districts to the Office of the Superintendent of Public Instruction



Note: School districts' federal funds includes one-time federal stimulus funds.

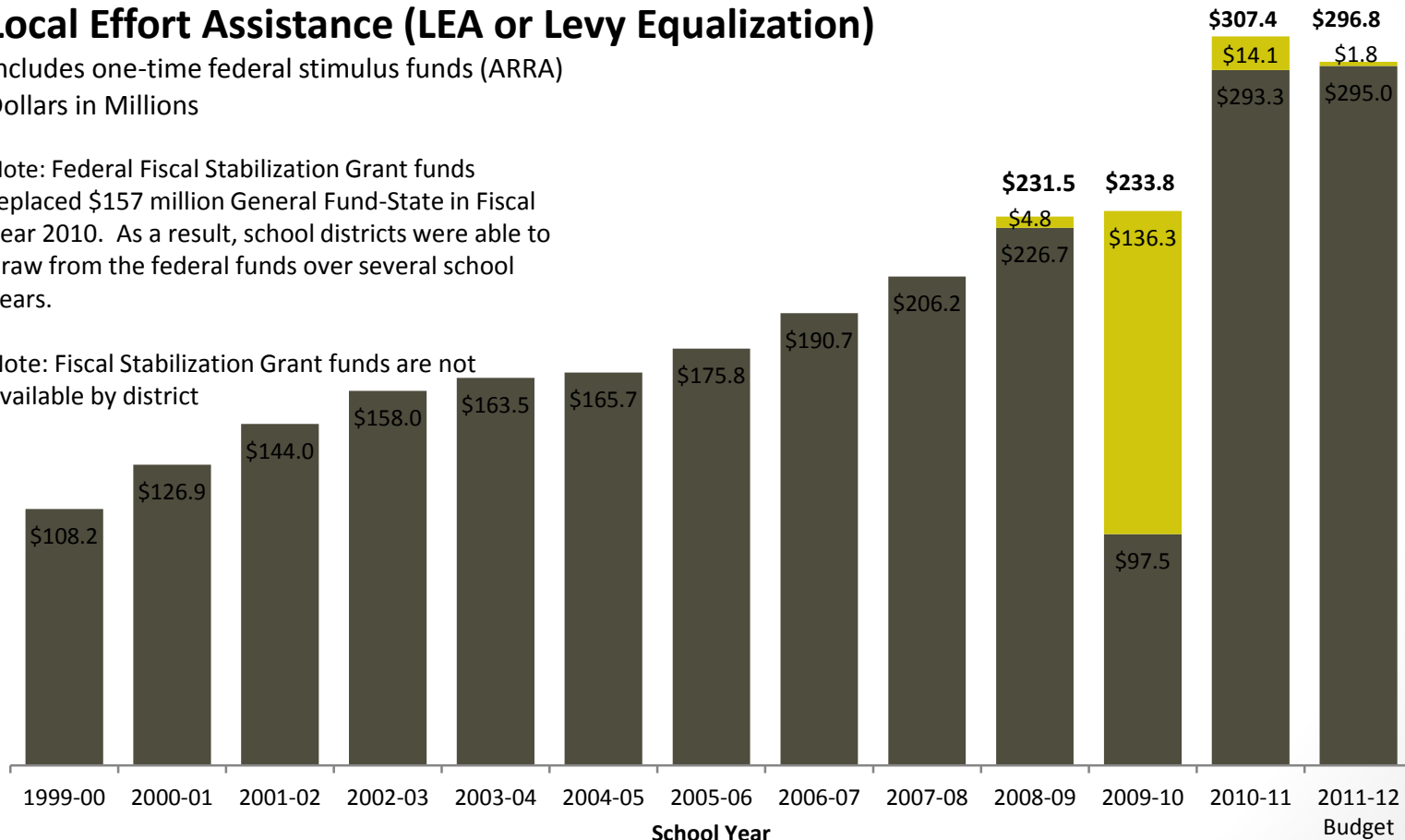
# The average annual growth of Local Effort Assistance is 8.7% from SY 2000 to SY 2013

## State Funding for K-12 Public Schools: Local Effort Assistance (LEA or Levy Equalization)

Includes one-time federal stimulus funds (ARRA)  
Dollars in Millions

Note: Federal Fiscal Stabilization Grant funds replaced \$157 million General Fund-State in Fiscal Year 2010. As a result, school districts were able to draw from the federal funds over several school years.

Note: Fiscal Stabilization Grant funds are not available by district





# Statewide per pupil funding for local effort assistance is \$299 in school year 2012

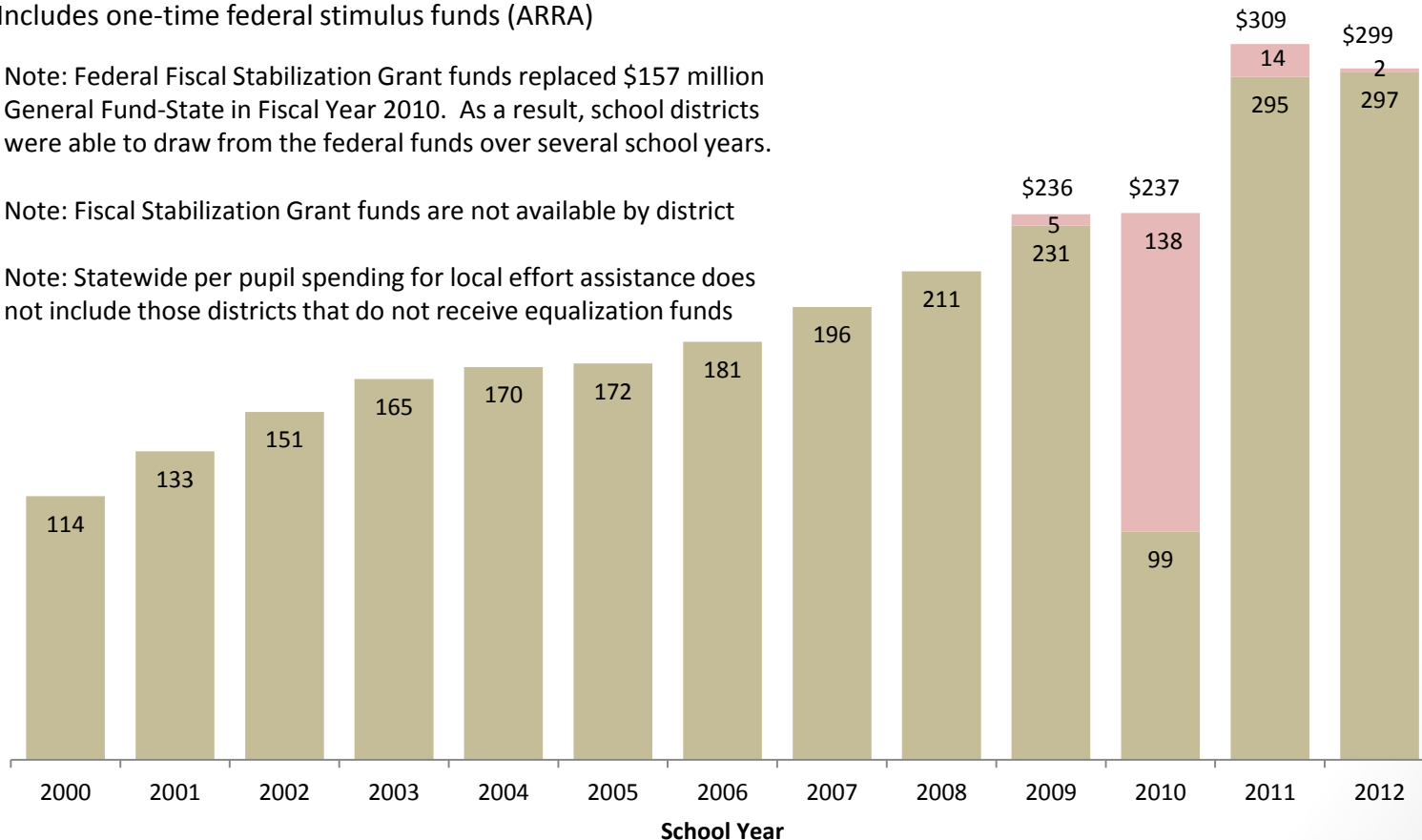
## Per Pupil State Spending for Local Effort Assistance

Includes one-time federal stimulus funds (ARRA)

Note: Federal Fiscal Stabilization Grant funds replaced \$157 million General Fund-State in Fiscal Year 2010. As a result, school districts were able to draw from the federal funds over several school years.

Note: Fiscal Stabilization Grant funds are not available by district

Note: Statewide per pupil spending for local effort assistance does not include those districts that do not receive equalization funds



# School District Funding by Source at a District Level

- Detailed district information is available at the LEAP website, “Washington State Fiscal Information” at <http://www.fiscal.wa.gov/>
- To view data, select the “K-12” option from the gray band across the top of the site.
- The types of reports are listed on the left side of the page and include:
  - Enrollment, Staffing, and Finance
  - District Expenditures
  - Graphical reports
  - Detail Data Views
  - Other K-12 Resources
- Each can be expanded to select refined options

# K-12 PUBLIC EDUCATION: BASIC VS NON-BASIC EDUCATION FUNDING

<b>Current Enacted 2011-13 Education Budget by Major Category: Third Engrossed Substitute House Bill 2127</b>			
<i>(Dollars in Millions)</i>			
	<b>FY 2012</b>	<b>FY 2013</b>	<b>Total</b>
<b>Basic Education Programs</b>			
General Apportionment*	\$5,182.3	\$5,095.3	\$10,277.7
Special Education	\$648.7	\$680.2	\$1,329.0
Transportation	\$321.4	\$272.8	\$594.1
Learning Assistance Program	\$126.6	\$128.8	\$255.4
Transitional Bilingual	\$79.6	\$80.7	\$160.2
Highly Capable Program	\$8.7	\$8.8	\$17.5
Institutions	\$16.7	\$15.9	\$32.6
<b>Subtotal: Basic Education Programs</b>	<b>\$6,384.1</b>	<b>\$6,282.4</b>	<b>\$12,666.5</b>
<b>SHB 2776 Phase In</b>			
Full-Day Kindergarten	\$38.1	\$49.3	\$87.4
K-3 Enhanced Staffing Ratio	\$20.3	\$25.8	\$46.2
<b>Subtotal: Basic Education Programs Phase In</b>	<b>\$58.5</b>	<b>\$75.1</b>	<b>\$133.5</b>
<b>Non-Basic Education Programs</b>			
Local Effort Assistance	\$300.8	\$298.2	\$598.9
Education Reform, including National Board Bonuses	\$58.9	\$104.3	\$163.1
State Office and Education Agencies	\$15.4	\$14.2	\$29.7
Statewide Programs and Allocations	\$9.9	\$12.9	\$22.8
Educational Service Districts	\$7.9	\$7.9	\$15.8
Food Service	\$7.1	\$7.1	\$14.2
Summer Vocational and Other Skills Center	\$0.4	\$0.4	\$0.9
Pupil Transportation Coordinators	\$0.9	\$0.9	\$1.8
Initiative 732 COLA & Other Compensation Increases	\$0.0	\$0.0	\$0.0
<b>Subtotal: Non-Basic Education Programs</b>	<b>\$401.3</b>	<b>\$445.9</b>	<b>\$847.2</b>
<b>Total NGF-S Funding for K-12 Public Education*</b>	<b>\$6,843.8</b>	<b>\$6,803.4</b>	<b>\$13,647.2</b>

\*Notes

- Under ESHB 2261 (2009) and SHB 2776 (2010), funding for full-day kindergarten and smaller K-3 class sizes is being phased in, with full implementation by 2018. ESHB 2261 states legislative intent that the specified policies and formulas adopted under that law will constitute the legislature's definition of basic education once fully implemented.
- General apportionment allocations include funding for certain delivery models and program enhancements that exceed the minimum funding generated by the statutory prototypical school funding model.
- General apportionment for FY 2012 includes an apportionment payment shift of \$115 million (net) from FY 2011.