



Proposed Final Report

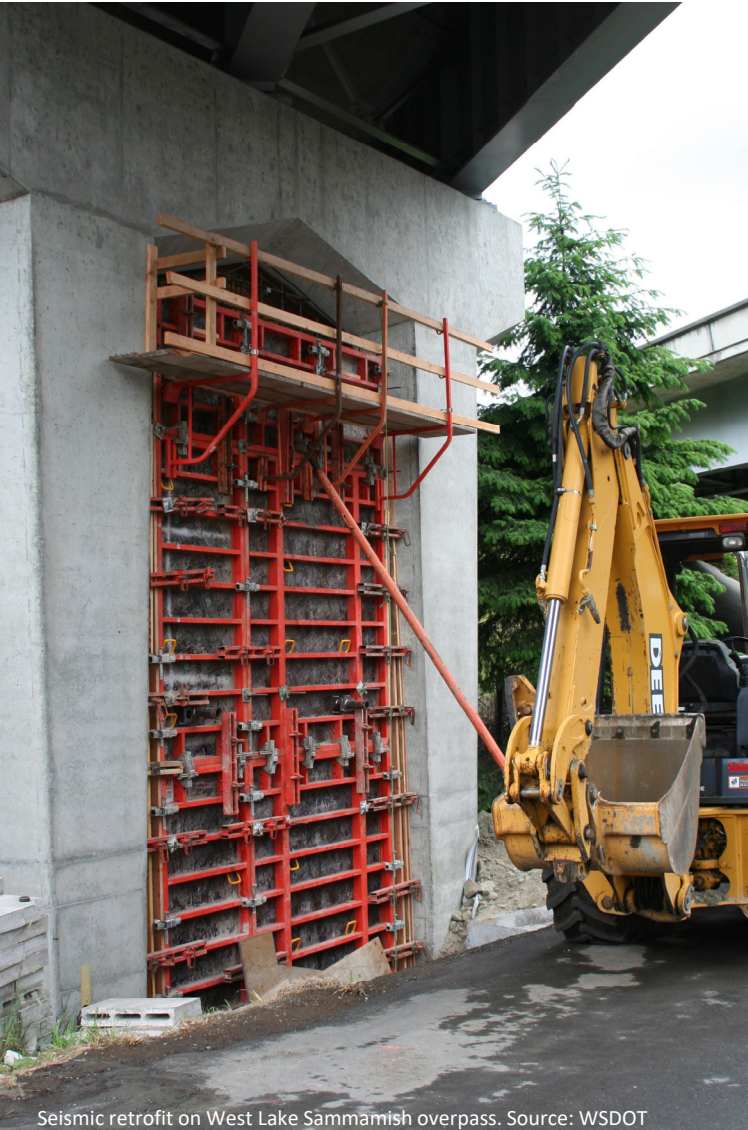
Follow-Up on WSDOT's Long-Term Estimates of Bridge Preservation Needs

Legislative Auditor's Conclusion: WSDOT has taken steps to improve its long-term estimates of bridge preservation needs, but will need to continue its work to provide complete and reliable estimates.

Aaron Cavin | Eric Whitaker

December 2019



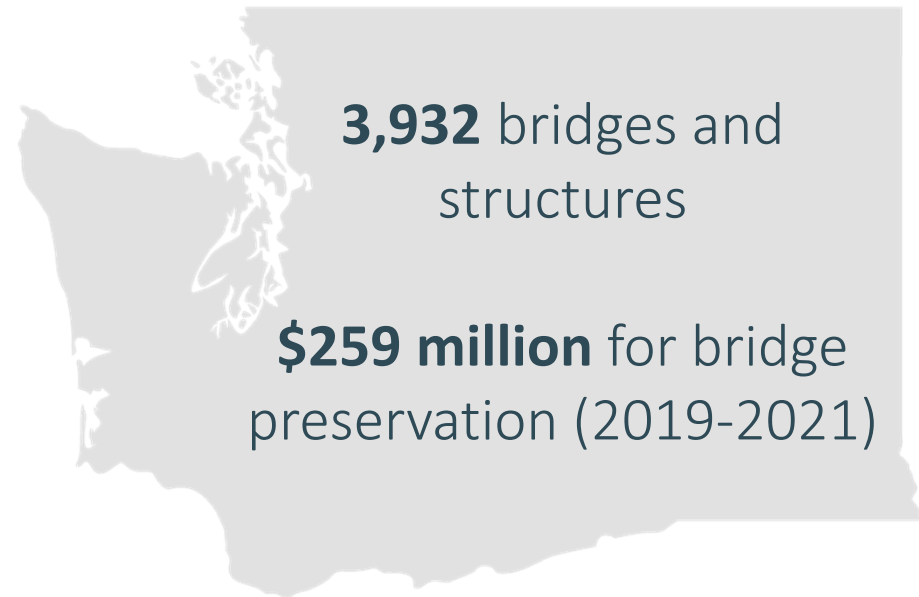


Seismic retrofit on West Lake Sammamish overpass. Source: WSDOT

Preservation

- Reduce, delay, or prevent deterioration
- Extend service life

Long-range planning required under state and federal law.



Follow-up on 2015 JLARC report

“WSDOT can provide reliable long-term pavement estimates, but accuracy of bridge estimates is uncertain.”

2015 Legislative Auditor Recommendations:

1. WSDOT should improve long-term estimates of bridge preservation needs.
2. WSDOT and OFM should develop a process to improve stakeholders' confidence in its estimates.

WSDOT has
acquired a
**bridge
management
system**

Capabilities

- Forecast deterioration
- Analyze life cycle costs
- Determine budget needs
- Evaluate funding scenarios

Implementation is not complete.

2015

WSDOT issues plan to improve estimates

2018

WSDOT begins implementation of bridge management system

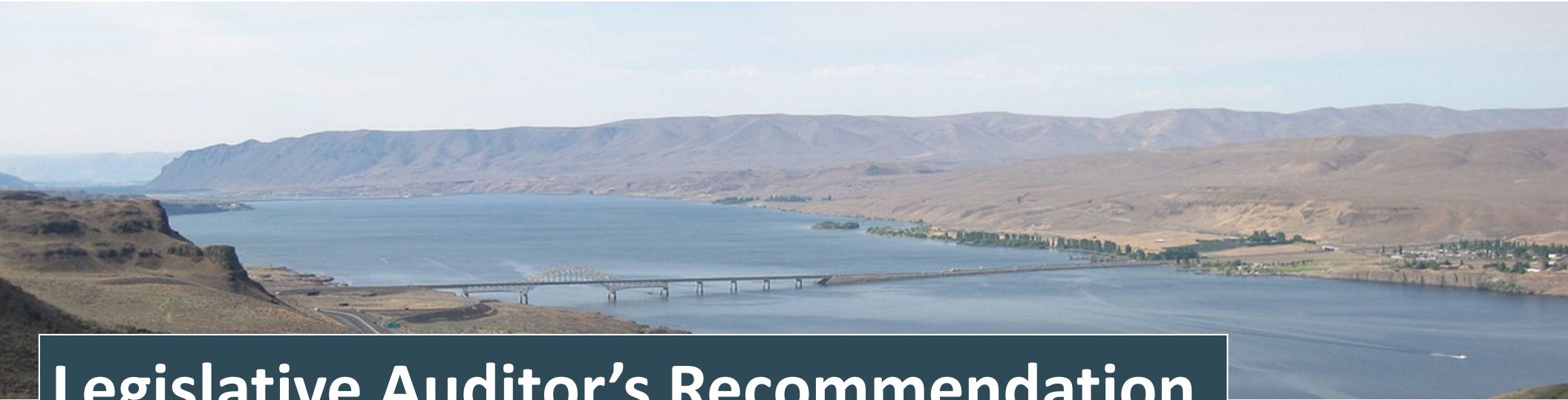
2017

Federal regulations require improvements

July 2020

WSDOT system fully operational (expected)

Progress is similar to other state departments of transportation.



Legislative Auditor's Recommendation

WSDOT should report to the Legislature on its progress with implementing its bridge management system.

WSDOT concurs

WSDOT can improve communications

OFM has not yet completed steps to help improve stakeholder confidence in bridge estimates.

Reported needs: **\$2.7 billion**

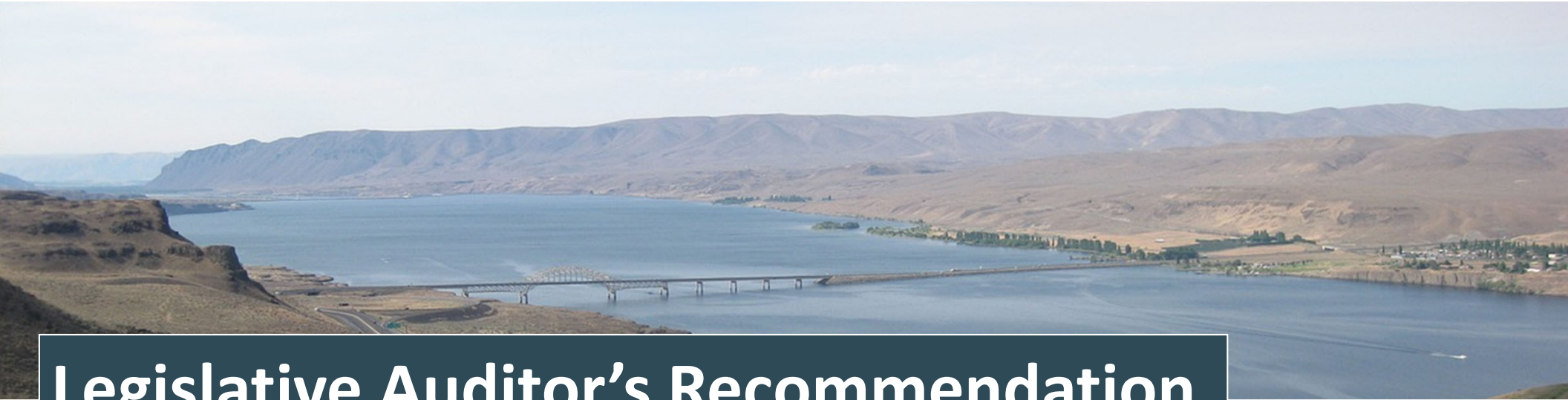
Incomplete

Does not include:

- Border bridges
- Moveable bridge components
- Seismic retrofits

Out of date

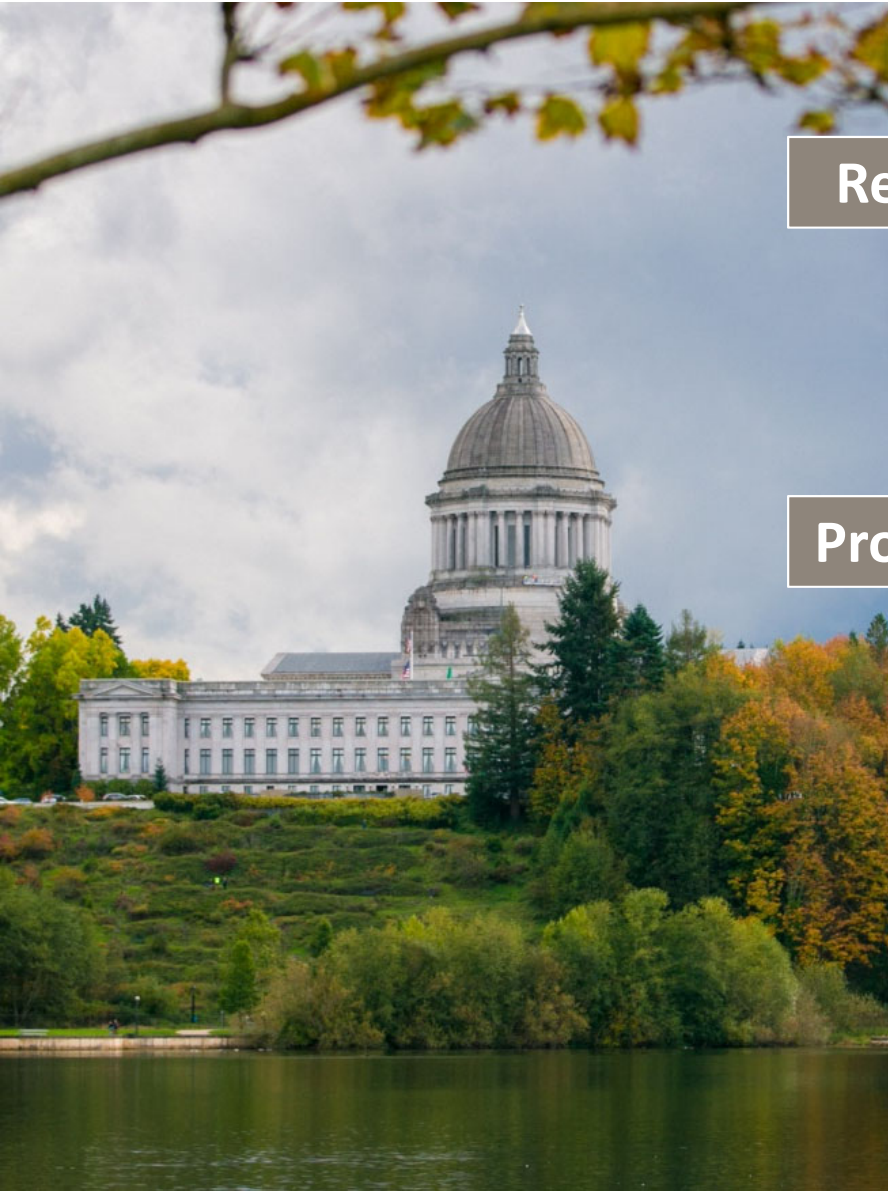
- Created in 2016
- Costs have increased by hundreds of millions



Legislative Auditor's Recommendation

WSDOT and OFM should develop and implement a plan to communicate long-term preservation needs accurately, reliably, and transparently.

WSDOT and OFM concur



Contact Us

Research Analysts

Aaron Cavin
360.786.5194
aaron.cavin@leg.wa.gov

Eric Whitaker
360.786.5618
eric.whitaker@leg.wa.gov

Project Coordinator

Eric Thomas
360.786.5182
eric.thomas@leg.wa.gov

Legislative Auditor

Keenan Konopaski
360.786.5187
keenan.konopaski@leg.wa.gov



Full Report: www.leg.wa.gov/jlarc