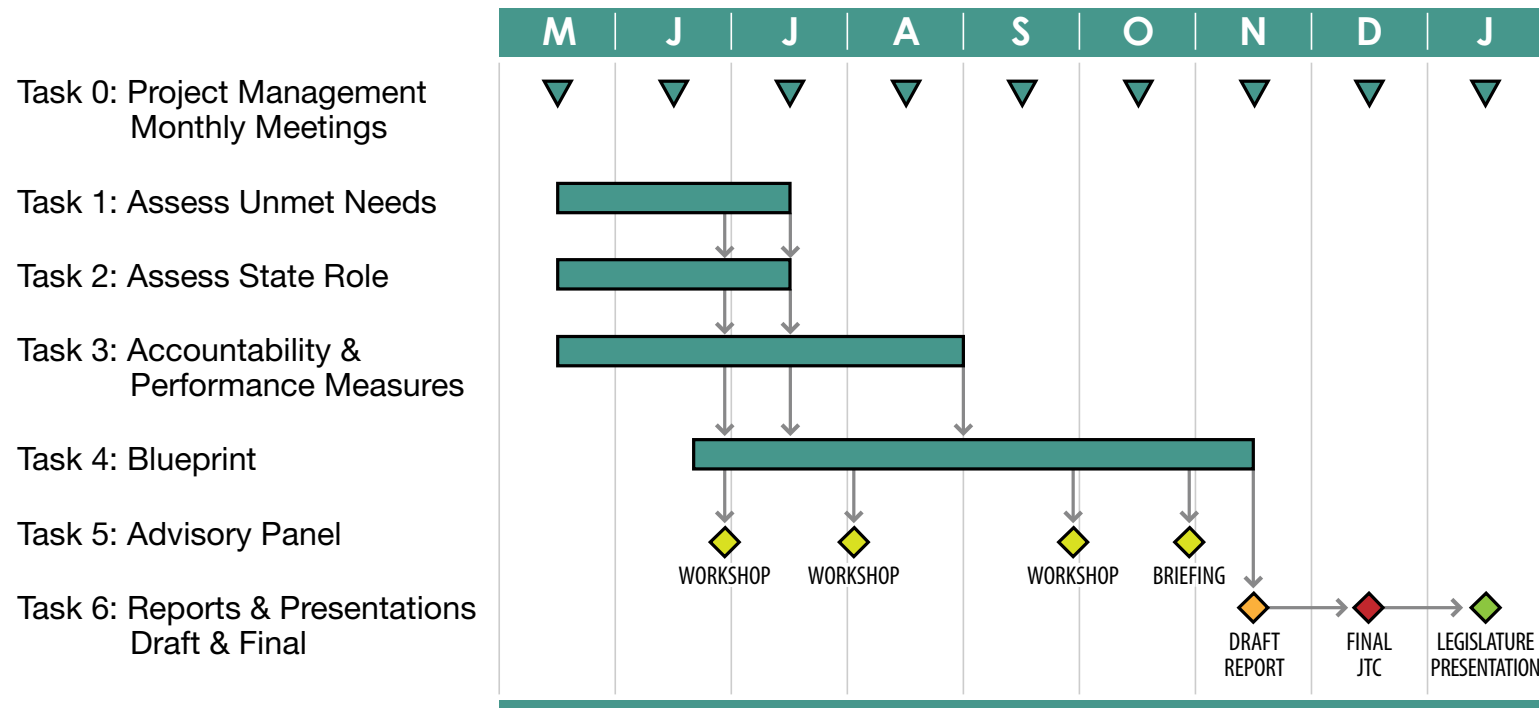


Schedule



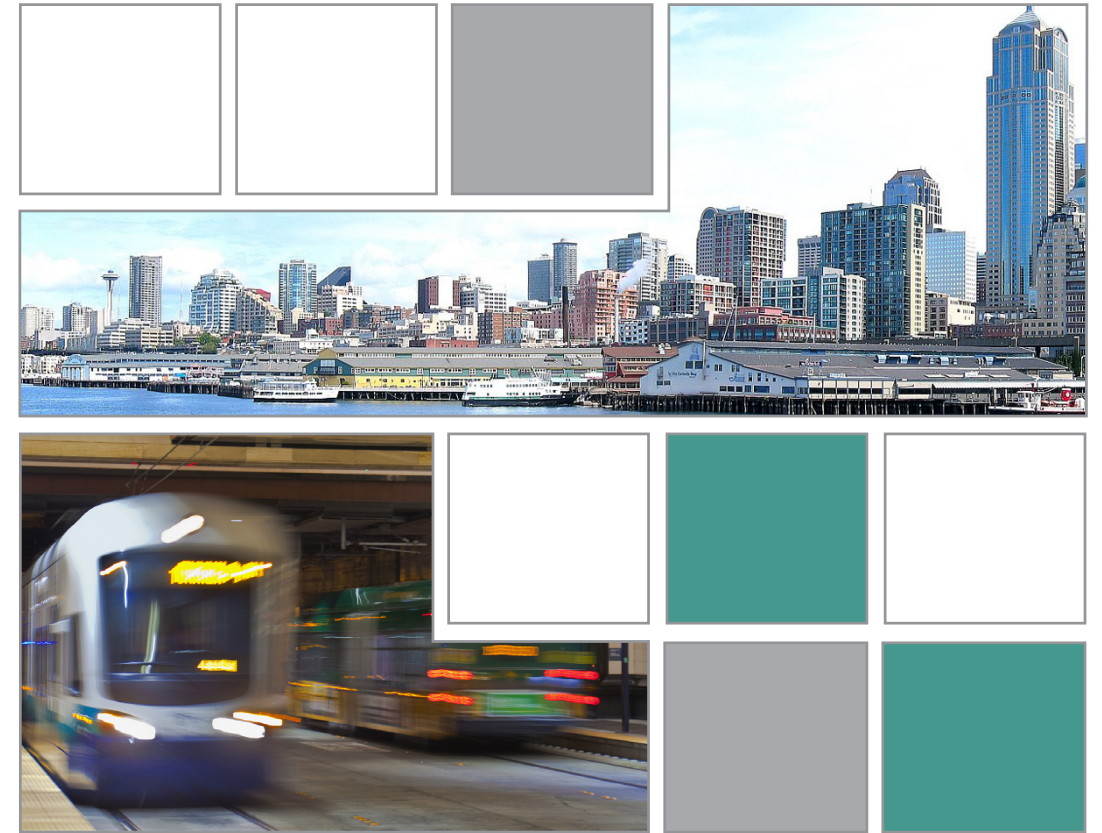
Contact Information

Sheila Dezarn
Project Manager
206-382-5247
Dezarn@pbworld.com

Barbara Gilliland
Facilitator
303-618-0490
Gilliland@pbworld.com

Identifying the State Role in Public Transportation

- Senator Mary Margaret Haugen, Island County (Snohomish, Skagit)
- Senator Brian Hatfield, Pacific County (Wahkiakum Cowlitz GH)
- Senator Dan Swecker, Thurston County (Lewis)
- Senator Curtis King, Yakima County
- Representative Judy Clibborn, Mercer Island, King County
- Representative Jim Moeller, Clark County
- Representative Marko Liias, Snohomish County
- Representative Mike Armstrong, Chelan County
- Representative Terry Nealey, Columbia County (Walla Walla, Benton)
- Katy Taylor, Washington State Department of Trans.
- Kelly Scaif, Pend Oreille County
- Levi Wilhelmsen, Pierce County
- Richard DeRock, Link Transit, Chelan County
- Kevin Desmond, King County Metro, King County
- Martha Rose, Island Transit, Island County
- Joni Earl, Sound Transit, King, Pierce & Snohomish counties
- Page Scott, Yakima Valley Council of Governments, Yakima County
- Charlie Howard, Puget Sound Regional Council, King, Snohomish, Pierce & Kitsap counties
- Rick Benner, Western Washington University, Whatcom County
- Jim Stanton, Microsoft, Redmond, King County
- Ted Horobiowski, Avista, Spokane, Spokane County
- Hans van Someren Greve, Stemilt Growers, Wenatchee, Chelan County
- Virginia McIntyre, Benton County
- Chuck Ayers, Seattle, King County
- Karen Stites, Amalgamated Transit Union, Thurston County
- Alice Tawresey, Kitsap County
- Gladys Gillis, King County
- Dave O'Connell, Mason County Transit, Mason County
- Tom Jones, King County



Public Transportation Advisory Panel Member Briefing

Our Strengths

- Experience developing and implementing public transportation policies and programs.
- Working knowledge of people, politics, and programs.
- Leveraging national leadership for Washington's benefit.

Transit Investments Blueprint Study

This study was authorized through the Supplemental Transportation Budget, Engrossed Substitute Senate Bill 6381 Section 204. It directed the JTC to undertake the study and convene a panel to consider and propose a statewide blueprint for public transportation to guide any future state investments in public transportation, including efforts to improve connectivity among transit systems. The study will assess:

- unmet operating and capital needs of various public transportation providers;
- the state role in funding those unmet needs;
- priorities for state investment, and;
- efficiency and accountability measures to inform future state investment.

Agenda

- Study Purpose
- Panel Role and Operations
- Study Process and Timeline
- Current/Future State Role Research Topics



Process Flow Chart

