

DIRECTORY

ADAMS	FISHER	LITCHMAN, J.	PETRIE
ANDERSON	FOLSOM	LONEY	PURVIS
ARNASON	FRAYN	LORIMER	RASNUSSEN
BAILEY	GALLAGHER	LYBECKER	RIGWAY
BALL	GORDON	WARDESCH	ROBISON
BEIERLEIN	GRIFFITH	MARTIN	ROSENBERG
BERNETHY	HALLAUER	MAST	RUOFF
BOZARTH	HANNA	MAY	SANDISON
BROWN	HANSEN	MCBEATH	SAVAGE
BYRNE	HANSON	MCUTCHEON	SAWYER
CANFIELD	HARRIS	MCDERMOTT	SHROPSHIRE
CARMICHAEL	HAWLEY	MCFADDEN, D.	SILER
CARTY	HECKENDORF	MILLER, C.	SMITH
CHYTIL	HENRY	MILLER, F.	STOCKER
CLARK, C.	HESS	MUNDY	STROM
CLARK, N.	HOLLIDAY	MUNRO	SWAYZE
COMFORT	HUNTA	MUNSEY	TESTU
CONNOR	HURLEY	NEAL	TIMM
COONEY	HYPPA	NEILL	WANG
DONOHUE	JOHNSTON	OAKES	WEDEKIND
DORE	JONESAD.	O'BRIEN	WEITZMAN
EDWARDS	JONES, M. Y.	OLSEN	WINTLER
ELDRIDGE	KINO	OLSON	YEAROUT
ELWAY	KIRK	OVENELL	YOUNG
FARRAR	KUPKA	PENCE	

Washington State Legislature

37th.
Session
1961

Published By
VICTOR A. MEYERS
Secretary of State

TABLE OF CONTENTS

	PAGE
Preface.	1
Functions of the Legislature	2
Senate Roster.	4
Senate Biographies	5
House of Representatives Roster. . .	20
House of Representatives Biographies	22
Legislative District Map of Wash. ..	26
The Press.	51

PREFACE

This "Pictorial Directory of 1961 Washington State Legislature" is designed to provide biographical material about the members of the legislature and the information of the general public.

Many states publish official "Blue Books" containing information about their public officials. Since lack of funds makes this impossible in Washington, we offer this smaller volume.

I hope that members of the 37th Legislature will find this a useful reference work and a memento of their service in this body.

The State Legislature

The Legislature is the paramount branch of American Government. It makes the state laws, controls the expenditures and determines the duties which the administrative authorities perform.

Without action by the state legislature there would be no elections, no registration, no public schools and no municipalities.

It regulates the citizen's civil rights and duties, secures him in the tenure of his property, and makes most of the rules that govern his daily movements.

In presenting this volume, I wish to express my sincere appreciation and thanks to the following. *Hon. John W. O'Brien, Speaker of the House, Hon. Al Henry, President Pro-Tem of the Senate. S.R. "Si" Holcomb, Chief Clerk of the House and Ward Bowden, Secretary of the Senate* for their cooperation in providing information and in arranging for the pictures used in this book.



VICTOR A. MEYERS
Secretary of State

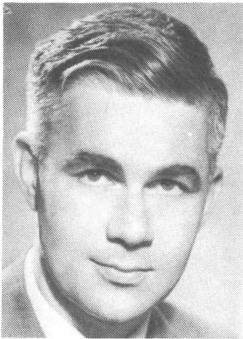
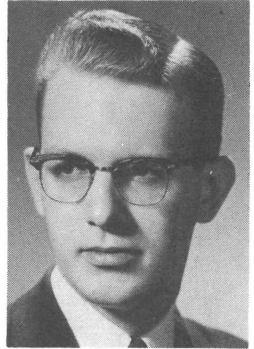
**THE SENATE
OF THE STATE
OF
WASHINGTON**

STATE OF WASHINGTON
ROSTER OF MEMBERS
State Senate

NAME	ADDRESS	DIST.NO.	POLITICAL PARTY
ANGEVINE, Wayne G.	4215 Eastern Ave., Seattle	32	D
BAILEY, Robert C.	Box 908, South Bend	19	D
BARGREEN, Howard	2821 Rucker Ave., Everett	38	D
CHYTIL, Joe	1274 - 5th St., Chehalis	20	R
CONNOR, Frank	408 - 20th S., Seattle	33	D
COONEY, John L.	N. 4403 Adams, Spokane	5	D
COWEN, David C.	S. 223 Coeur D'Alene, Spokane	7	D
DeGARMO, Victor F. "Vic"	Capitol Apartments, Olympia	22	D
DONOHUE, Dewey C.	506 E. Richmond, Dayton	10	D
DORE, Fred H.	905 American Building, Seattle	37	D
DURKAN, Martin J.	908 American Bldg., Seattle	47	D
ELWAY, Harry S. Jr.	106 Karr Ave., Hoquiam	21	R
FOLEY, Frank W.	3924 Wauna Vista Drive, Vancouver	49	D
FOSTER, F. Stuart	Route 2, Selah	14	R
FREISE, Herbert H.	200 Jones Bldg., Walla Walla	11	R
GALLAGHER, Michael J.	8045 Burke Ave., Seattle	45	D
GISSBERG, William A.	312 State St., Marysville	39	D
GREIVE, R. R. (Bob)	4456 California Ave., Seattle	34	D
HALLAUER, Wilbur G.	P. O. Box 70, Oroville	1	D
HANNA, H. B. "Jerry"	1130 Springwater Ave., Wenatchee	12	D
HAPPY, John H.	311 Paulsen Bldg., Spokane	6	R
HENRY, Al	Rio Vista, White Salmon	17	D
HERRMANN, Karl	Box 666, Millwood Branch, Spokane	4	D
HESS, Andy	1414 S. W. 158th, Seattle	31	D
HOFMEISTER, Louis E.	P. O. Box 203, Enumclaw	30	D
KEEFE, James (Jimmy)	412 W. Glass Ave., Spokane	3	D
KNOBlauch, Reuben A.	P. O. Box 363, Sumner	25	D
KUPKA, George W.	801 So. G Street, Tacoma	27	D
LENNART, Ernest W.	Route 1, Everson	41	R
MARTIN, Fred J.	Rockport	40	D
McCORMACK, Mike	2010 Everest, Richland	16	D
McCUTCHEON, John T.	114 Martin St., Steilacoom	29	D
McMILLAN, David E.	Route 3, Colville	2	D
MORGAN, Frances Haddon	948 Lower Oyster Bay Road, Bremerton	23	D
MORIARTY, Charles P., Jr.	1212 American Bldg., Seattle	36	R
NEILL, Marshall A.	414 Dexter St., Pullman	9	R
NUNAMAKER, Homer O.	701 - 11th St., Bellingham	42	D
PAPAJANI, John	3512 W. 70th, Seattle	44	D
PETRICH, John A.	806 Washington Bldg., Tacoma	26	D
RASMUSSEN, A. L.	4031 Pacific Ave., Tacoma	28	D
RAUGUST, W. C.	Odessa	8	R
RILEY, Edward F.	222 Westlake Ave., No., Seattle	35	D
RYDER, John N.	6811 - 55th Ave., N.E., Seattle	46	R
SANDISON, Gordon	P. O. Box 967, Port Angeles	24	D
SHANNON, William D.	3212 Morley Way, Seattle	43	R
TALLEY, Don L.	404 No. 7th Ave., Kelso	18	D
THOMPSON, Albert C. Jr.	250 Bellevue Square, Bellevue	48	R
WASHINGTON, Nat	42 C Street N. W., Ephrata	13	D
WOODALL, Perry B.	P. O. Box 507, Toppenish	15	R

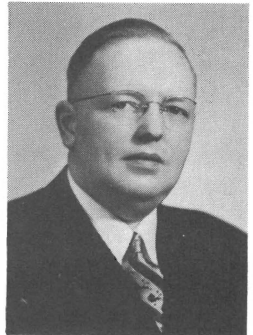
Senators

ANGEVINE, WAYNE G. (Democrat) Senator from the 32nd District of King County. Will be serving his second term in the Senate. He was born in Seattle in 1935. Graduate of the Seattle University with a B.A. Degree in Political Science. Is employed in Public Relations. He is married.



BAILEY, ROBERT C. (BOB) (Democrat) Senator from the 19th District of Pacific and part of Grays Harbor County. Served in the House-1951-53-55 and Senate in 1957-59. Born in Raymond in 1918. Graduated from high school and is a printer by trade. Served in the Navy during World War II. Belongs to Eagles, 40 et 8, American Legion, VFW, Military order of Cooties, Masons, Boy Scout District Committee. Married and has one son.

BARGREEN, HOWARD S. (Democrat) Senator from the 38th District of Island and Snohomish Counties. Served in the House-1949-50 and Senate-1941-43-44-45-51-53-55-57-59. Born in Everett in 1906. He attended the U. of W. Served in National Guard. Owns a coffee roasting and restaurant equipment supply company. Belongs to Elks, Eagles, Masons, Yacht and Everett Sportsmen Club. Married and has four children.



CHYTIL, JOE (Republican) Senator from the 20th District of Lewis County. Served in the House-1953-55-57-59. Newly elected member to the Senate. Born in Aberdeen in 1909. He has a high school and business college education. Since 1937 he has been in the radio broadcasting business. Member of Elks, Eagles and Rotary. Married and has two children.

Senators



CONNOR, FRANK (Democrat) Senator from the 33rd District of King Co. Served in the House in 1951-53-55 and in the Senate in 1957 and 1959. Born in Seattle in 1916. He is a high school graduate. Is a Deputy Assessor of King Co. Belongs to the Knights of Columbus. He is married.

COONEY, JOHN L. (Democrat) Senator from the 5th District of Spokane County. Served in the House-1951-55 and in the Senate-1957-59. He was born in Condon, Ore. in 1915. Graduate of Gonzaga U. and is a practicing lawyer. Member of Elks, Knights of Columbus and the Grange. Married and has four children.



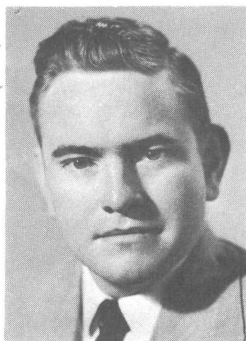
COWEN, DR. DAVID C. (Democrat) Senator from the 7th District of Spokane Co. Senior member of the Senate. He served in the House in 1935-37-39-41 and Senate-1943-44-45-47-49-50-51-53-55-57-59. Was born in Portland, Ore. in 1900. Graduate of Ore. U. and is a Dentist, Pres. of Spokane Planning Comm., Dir. of United Crusades, Muscular Dystrophy and Retarded Childrens Committee and on Public Library Comm. Member of Masons, Shrine and Elks. Unmarried.

DeGARMO, V. F. "VIC" (Democrat) Senator from the 22nd District of Thurston County. Will be serving his third term in the Senate. Born in Staples, Minnesota in 1914. He is a high school graduate. Served in the Marines. Is associated with the Olympia Brewing Company. Belongs to Eagles, Moose, American Legion and VFW. He has one son.



Senators

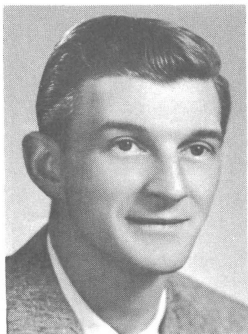
DONOHUE, DEWEY C. (Democrat) Senator from the 10th District comprising Asotin, Columbia and Garfield Counties. Served in the House-1949-50-51-53-55-57-59 will be serving his first term in the Senate. Born in Dayton, Wash. in 1897. Attended high school and business college. He is a farmer. Belongs to the Elks, Masons and the Grange. Married and has three daughters and two sons.



DORE, FRED H. (Democrat) Senator from the 37th District of King County. Served in the House-1953-55-57-59-appointed to the Senate and served in the 1959 extra Session-re-elected in 1960. Born in Seattle in 1925. Attended Seattle U. almost three years and graduated from Georgetown Foreign Service School and Georgetown Law School in 1949. He is an attorney. He is married and has three children.

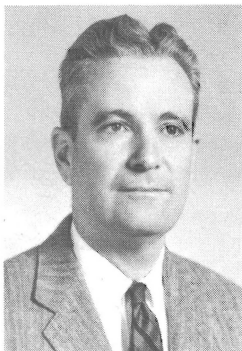


DURKAN, MARTIN JAMES, JR. (Democrat) Senator from the 47th District of King County. Served in the House in 1957 and will be serving his second term in the Senate. Born in Great Falls, Mont. in 1924. Graduate of the U. of W. Law School and is a practicing attorney. Veteran of World War II. Married and has four children.



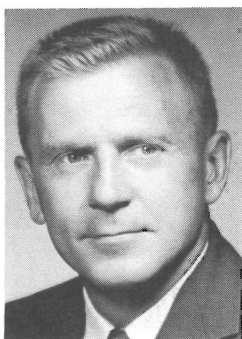
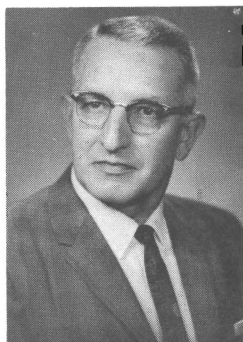
ELWAY, HARRY STEWART, JR. (Republican) Senator from the 21st District of Grays Harbor Co. Served in the House-1953-55-57 and in the Senate in 1959. Born in Hoquiam in 1920. Presently mayor of Hoquiam. Attended San Francisco Jr. College and is now owner of a plumbing supply co. Veteran of World War II and Past Commander Post #5 of the Am. Legion. Belongs to VFW, DAV, Masons, Elks, 40 et 8, Eagles and Grange. Married and has three children.

Senators



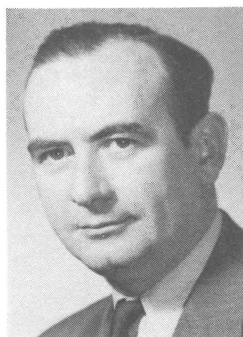
FOLEY, FRANK W. (Democrat) Senator from the 49th District of Clark Co. Will be serving his third term. Born in Spokane in 1913. Graduated from W.S.U. and Gonzaga Law School and is a practicing attorney. Served in the Army during World War II. Member of Kappa Sigma fraternity and Elks lodge. He is married.

FOSTER, F. STUART (Republican) Senator from the 14th District of Yakima County. Served in the House in 1941-43-47-49 and the Senate in 1951. He was born in Rossville, Georgia in 1907. Graduate of U. of W. and Willamette U. Law School and is now a practicing attorney. Belongs to the Elks Club. Was a member of Washington State Power Commission from 1955-1957. Married and has three children.



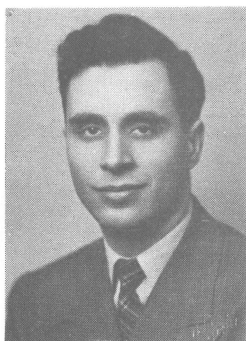
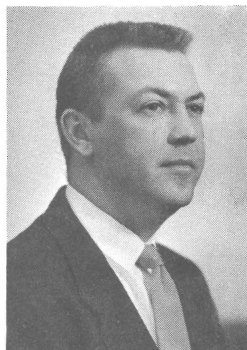
FREISE, HERBERT H. (Republican) Senator from the 11th District of Walla Walla County. Serving his third term. Born in Palatine, Ill. in 1917. Graduate of Valparaiso University Law School and he is a lawyer. Served in the Navy during World War II. Belongs to Phi Delta Theta fraternity. Married and has three children.

GALLAGHER, MICHAEL J. (Democrat) Senator from the 45th District of King County. Served in the House 1943-44-49-50 and Senate-1945-51 53-55-57-59. Born in Indianapolis, Ind. in 1911. Attended business college. He is engaged in real estate business. He is married.



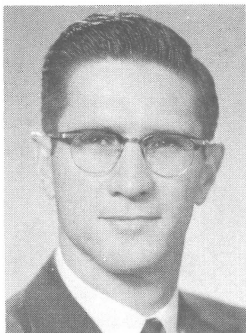
Senators

GISSBERG, WILLIAM A. (Democrat)
Senator from the 39th District of
Island and Snohomish Counties.
Will be serving his fifth term in
the Senate. Born in Everett in
1922. Graduated from the U. of
W. with B.S. and LL.B. Degrees and
is an attorney. Served in World
War II as a Marine. Belongs to
Elks and Moose lodges. Has one
son and two daughters.



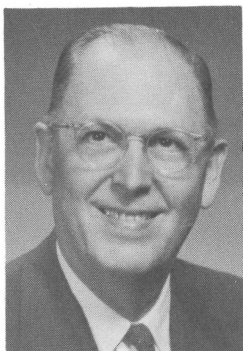
GREIVE, R. R. (BOB) (Democrat)
Senator from the 34th District of
King County will be serving his
eighth term. Born in West Seattle
in 1919. Graduate of the Miami,
Florida School of Law and has also
attended the U. of W. and Seattle
U. and is an attorney. Served in
the Coast Guard during World
War II. Belongs to Lions, Eagles,
and American Legion. Married and
has four children.

HALLAUER, WILBUR G. (Democrat)
Senator from the 1st District of
Douglas and Okanogan Counties.
Served in the House-1949-50-51-53-
55 and in the Senate-1957-1959.
Born in Webster, N. Y. in 1914.
Graduate of the U. of W. in 1937.
He is a factory manager (Valley
Evaporating Company) in Oroville.
Is married and has two daughters.



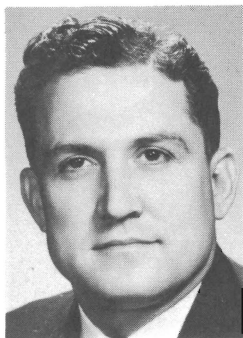
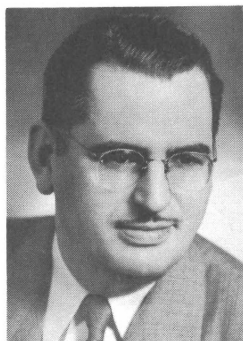
HANNA, H. B. (JERRY) (Democrat)
Senator from the 12th District of
Chelan County. Served in the
House in 1955 and Senate in 1957-
59. Born in Wenatchee in 1921.
Graduate of Valparaiso University,
Law School in Indiana and is a
practicing attorney. Served in
the Army during World War II.
Belongs to the Elks and Kiwanis.
He is married and has a daughter
and son.

Senators



HAPPY, JOHN H. (Republican) Senator from the 6th District of Spokane County. Will be serving his eighth term. Born in Spokane in 1895. He attended the U. of W. Has an insurance agency. Served overseas in World War I. Member of Delta Kappa Epsilon. He is married and has one son.

HENRY, AL (Democrat) Senator from the 17th District comprising Skamania, Klickitat and part of Clark County. Served in the House-1941-45-51-55 and in the Senate-1957-59. Born in Ness County Kansas in 1911. Has a business education and is a telephone executive. Veteran of World War II. He is married and has two daughters.



HERRMANN, KARL V. (Democrat) Senator from the 4th District of Spokane County will be serving his third term in the Senate. Born in Granite Falls, Wash. in 1915. Attended University of Puget Sound, Washington State University and graduated from Gonzaga U. Law School. He is a lawyer. Senator Herrmann has five children.

HESS, ANDY (Democrat) Senator from the 31st Dist. of King Co. Served in the House-1951-53-55 and in the Senate-1957-59. Born in Abilene, Kansas in 1923. Graduate of U. of W. and done graduate work in economics. Is a real estate appraiser; broker; industrial property management consultant; manager, Boeing Field, King Co. Airport; Member Board of Dir., General Security Life Company. Served in Navy during World War II. Belongs to Grange, Elks and VFW. Married and has three children.



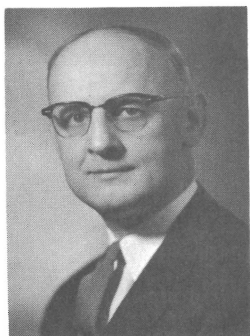
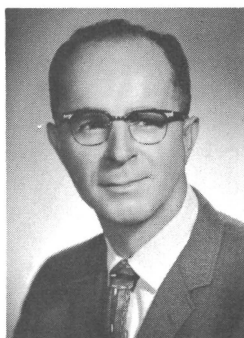
Senators

HOFMEISTER, LOUIS E. (Democrat) Senator from the 30th District of King County. Served in the House-1943-44-45-49-50-51-53 and in the Senate-1955-57-59. Born in Portage on Vashon Island in 1893. He is a salesman. During World War I he served overseas. Past State Commander of the VFW. Belongs to the American Legion, Moose, Eagles and State Grange. He is married.



KEEFE, JAMES EDWARD (Democrat) Senator from the 3rd District of Spokane County. Served in the Senate in 1949-50-51-53-55-57-59. Born in New York City in 1908. Graduate of Gonzaga High School. He is a public relations and sales representative in Spokane. Member of the Elks Club. Married and has two sons.

KNOBLAUCH, REUBEN A. (Democrat) Senator from the 25th District of Pierce County. Served in the House-1947-49-50-51 and in the Senate-1953-55-57-59. He was born in Sumner in 1914. Graduate of Sumner High School. He is a farmer and club manager. Member of the Elks, Grange, American Legion and VFW. Served in World War II. He is unmarried.



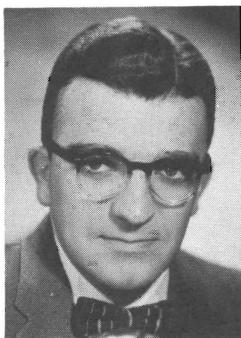
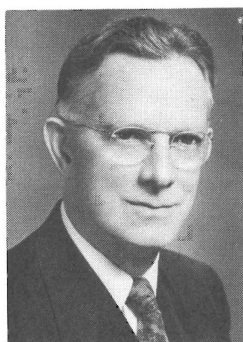
KUPKA, GEORGE (Democrat) Senator from the 27th District of Pierce County. Served in the House-1949-50-51-53-55 and Senate-1957-59.. Born in South Prairie, Wash. in 1912. High school graduate and is now in the jewelery business. In the Navy during World War II. Member of the Elks, Eagles and Tacoma Civic Club. Unmarried.

Senators



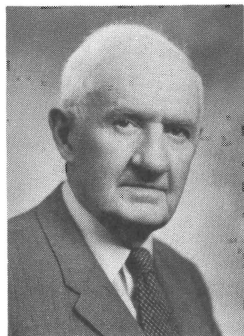
LENNART, ERNEST W. (Republican) Senator from the 41st District of Whatcom County. Served in the House-1941-43-44-51 and the Senate -1953-55-57-59. Born in Sweden in 1893. He attended college and is now engaged in farming and cold storage and the seed business. Veteran of World War I. Belongs to the Masons, Grange, Farm Bureau, Legion and VFW. He is married and has five children.

MARTIN, FRED J. (Democrat) Senator from the 40th District of San Juan and Skagit Counties. Served in the House-1935-37-39-41-43-44-45 in the Senate-1957-59. Born in Rockport, Wash. in 1897. He has a high school education and is a cattle rancher. Veteran of World War I. Belongs to the Knights of Columbus, Grange and American Legion. He is married and has two sons.



MCCORMACK, MIKE (Democrat) Senator from the 16th District of Benton and Franklin Counties. Served in the House-1957-59 and elected to the Senate in 1960. Born in Ohio in 1921. Graduate of W.S.U. with B.S. and M.S. Degrees. He is employed as a Radio Chemist at Hanford. Served in World War II. Member Sigma Chi Fraternity, Am. Legion, Am. Chemical Society, Fed. of Am. Scientist and Masons. He is married and has three sons.

MCCUTCHEON, JOHN T. (Democrat) Senator from the 29th District of Pierce County. Served in the House-1941 and Senate-1943-44-45-47-49-59. Born in Tacoma in 1892. Received his law degree from the University of Indiana and attended U. of Wash. for one year. Practiced law in Tacoma from 1926-1960 now retired. Former mayor of Steilacoom. Member of Eagles, Grange and Masons. He is married and has three children.



Senators

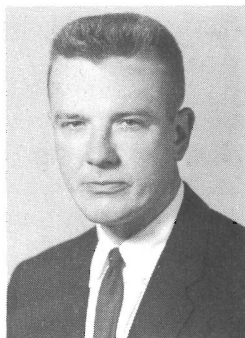
McMILLAN, DAVID E. (Democrat) Senator from the 2nd District of Pend Oreille and Stevens Counties. Served in the Senate in 1935-37-39-41-59 and will be serving his 6th term. Born in Colville in 1897. Attended the U. of W. He is a farmer and cattleman. Veteran of World War I. Member of Elks, Masons and belongs to the American Legion. He is married and has two daughters and a grandson.



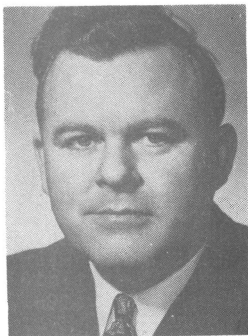
MORGAN, FRANCES HADDON (Democrat) Senator from the 23rd Dist. of Kitsap Co. Served in the House in 1959 and elected to the Senate in 1960. She is following in the footsteps of her mother, Lulu D. Haddon, who was a member of the House of Representatives and the Senate. She was born in Bremerton and has a business college education. Owns and operates a welcoming service. On the Governor's Council for Children & Youth in 1957. Member Ladies of Elks, PTA, Soroptimists and Washington Assn. for Retarded Children. Married and has two daughters.



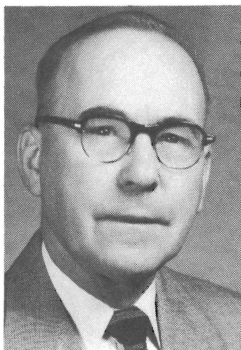
MORIARTY, CHARLES P., JR. (Republican) Senator from the 36th District of King Co. Served in House-1957-59 and appointed in June, 1959, to fill vacancy caused by death of Victor Zednick, elected 1960 to unexpired term. Born in Seattle in 1927. Graduate of the U. of W. Law School he is a practicing attorney. Served in Army Judge Advocate General's Corps 1952-53. Belongs to the Elks, Knights of Columbus and Am. Legion. Unmarried.



NEILL, MARSHALL A. (Republican) Senator from the 9th District of Whitman County. Served in the House-1949-50-51-53-55 and in the Senate-1957-59. Born in Pullman in 1914. Graduated from Wash. State University and U. of Idaho Law School and he is a practicing lawyer. Served in the Navy during World War II. Belongs to the Elks and Masonic Order. Married and has three children.

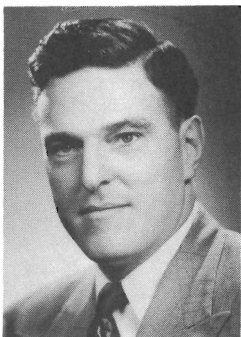


Senators



NUNAMAKER, HOMER O. (Democrat) Senator from the 42nd District of Whatcom County. Served in House-1943-44-45-49-50-51 and Senate-1955-57-59. Born in Greenup, Ill. in 1891. Attended Eastern State Normal in Illinois and has a business administration education. He is a retired groceryman. Belongs to Eagles and A.O.U.W. He is married.

PAPAJANI, JOHN (Democrat) Senator from the 44th District of King Co. Served in the House 1959 and 59 Extra Session. Appointed to the Senate to succeed Harold Kimball and elected in 1960. He was born in Albania in 1912. Graduate of U. of W. and is a partner in an insurance agency. Military service--retired U.S. Navy Reserve. Belongs to Eagles, Elks, VFW and Order of Ahepa. Married and has three children.



PETRICH, JOHN A. (Democrat) Senator from the 26th District of Pierce County. Served in the House-1957 and will be serving his second term in the Senate. Born in Tacoma in 1919. Attended the U. of W. and graduated from the U. of Santa Clara and received his law degree from Georgetown U. He is a practicing attorney. In the Navy during World War II. Belongs to the Elks. He is married and has six children.

RASMUSSEN, A. L. (Democrat) Senator from the 28th District of Pierce County. Served in the House-1945-47-49-50-51-53-55-57 and will be serving his second term in the Senate. Born in Everett in 1909. Attended the public schools of Tacoma. He is a railroad machinist. He is married and has four children.



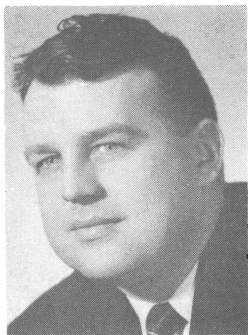
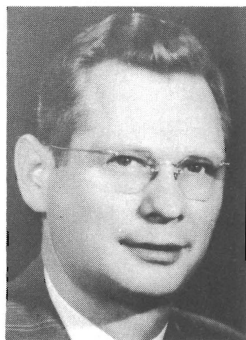
Senators

RAUGUST, W. C. (Republican) Senator from the 8th District of Adams, Ferry and Lincoln Counties. Served in the House-1943-44-45-47-49 and in the Senate-1950-51-53-55-57 and 59. Born in Russia in 1895 of Dutch and German parentage. Has a business education and attended Harvard Radio School during World War I - served in the Navy. He has farming interests and is Pres. of several companies and manager of a farmer's co-operative dealing in grain, beans, farm implements and hardware. Belongs to American Legion and Lions. Married and has five children.



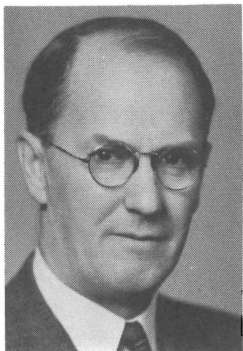
RILEY, EDWARD F. (Democrat) Senator from the 35th District of King County. Served in the House-1939-41-43-44-45-47-49-50 and in the Senate in 1951-53-55-57-59. Born in Seattle in 1898. Attended the U. of W. and is now Executive Vice-Pres. of a Plumbing and Heating Wholesale House. Served in the Army during World War I. Member of the Knights of Columbus, Kiwanis, American Legion and Theta Delta Chi. Married and has four children.

RYDER, JOHN N. (Republican) Senator from the 46th District of King County. Served in the House-1953- and in the Senate-1955-57-59. Born in Seattle in 1907. Attended U. of W. and is a graduate of School of Banking, Rutgers University. He is a banker. Member of the Ravenna Lodge F.H.A.M. Married and has three children.



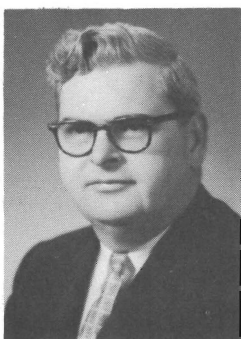
SANDISON, GORDON (Democrat) Senator from the 24th District of Clallam, Jefferson and Mason Counties. Served in the House-1949-50-51-53-55 and in the Senate in 1957-59. Born in Auburn in 1919. College graduate and has done post graduate work also graduate of Hartford Fire Ins. Training Center, is an insurance agent. In the Marines during World War II. Member of the Elks, Eagles, VFW, Grange and Army-Navy Legion of Valor. Married and has four children.

Senators



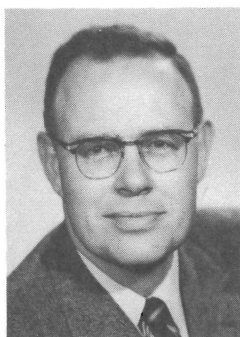
SHANNON, WILLIAM D. (Republican) Senator from the 43rd District of King County. Served in the House-1947-49 and in the Senate-1950-51-53-55-57-59. Born in Parkville, New York in 1881. Graduate of the U. of Michigan with a B.S. in Civil Engineering. He is a consulting engineer. Belongs to F. and A.M. He is married and has three children.

TALLEY, DONALD L. (Democrat) Senator from the 18th District of Cowlitz and Wahkiakum Counties. Will be serving his third term in the Senate. Born in Tacoma in 1918. He is mayor of Kelso. Has a high school education and is a meat dealer. Served in the Navy during World War II. Belongs to the Elks, Moose, Masons, Shrine and American Legion. He is married and has two sons.



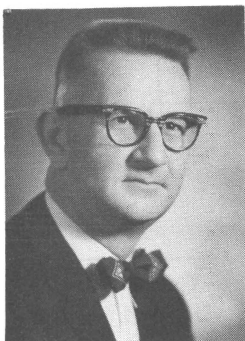
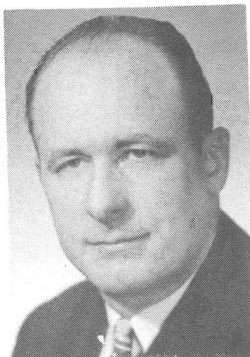
THOMPSON, ALBERT C., JR. (Republican) Senator from the 48th District of King County. Will be serving his second term. Born in Tacoma in 1919. He graduated from the U. of Washington in pharmacy and now owns and operates a drug store. He is married and has a son and daughter.

WASHINGTON, NAT (Democrat) Senator from the 13th District of Grant and Kittitas Counties. Served in the House-1949-50 and in the Senate-1951-53-55-57-59. Born in Coulee City in 1914. Graduate of the U. of W. Law School and he is an attorney. In the Army Air Force for five years. Belongs to the Elks, Grange and Masons. Married and has two sons.



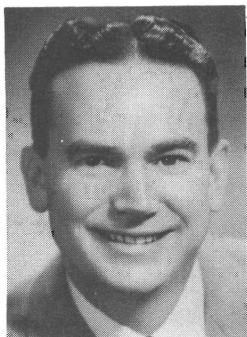
Senators

WOODALL, PERRY B. (Republican) Senator from the 15th District of Yakima County. Served in the House-1939-41-43-47-49-50-51 and Senate-1957-59. Born in Buena in 1912. Graduate of Yakima Valley Junior College and U. of W. Law School. He is an attorney. In the Navy during World War II. Member of the American Legion, Eagles and Grange. He is married and has one daughter.

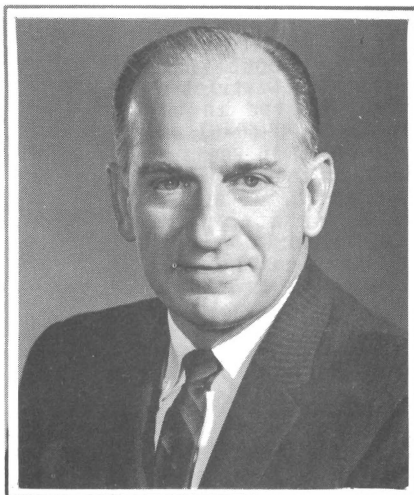


BOWDEN, WARD (Democrat) Secretary of the Senate from the 39th District of Snohomish County. Served as Assistant Chief Clerk of the House-1941-43-51-55. He will be serving his third session as Secretary of the Senate. Born in Everett in 1912. He is a newspaper publisher. Belongs to the Elks, Eagles and Kiwanis. Married and has five daughters.

JOHNSON, CHARLIE (Democrat) Sergeant-at-Arms of the Senate is from the 22nd District of Thurston County. Will be serving his third session as Sergeant-at-Arms. During 1955 Session he served as Sergeant-at-Arms in the House. Served in the 1951 and 51 Extra Session in the House. Born in Elko, Wyo. in 1911. High school graduate he is a wholesale distributing and manufacturing representative. Belongs to the Eagles, B.P.O.E. and W.A.C. Married and has four children.



Senators



LIEUTENANT GOVERNOR

JOHN A. CHERBERG (Democrat) from the 36th District of King County. Elected Lieutenant Governor in 1956 and re-elected in 1960. Lieutenant Governor Cherberg has served as presiding officer (President) of the State Senate during the 1957 and 1959 Regular Sessions and 1959 Special Session. He serves as Chairman of the Senate Rules Committee. Lieutenant Governor Cherberg was born in Pensacola, Florida in 1910 and is a graduate of the University of Washington. He formerly was a teacher and athletic coach at Cleveland High School, Queen Anne High School and the University of Washington, all of Seattle. At present he is a television executive. He belongs to Sigma Nu Fraternity, Elks, Eagles and Moose. He married Elizabeth Ann Walker in 1935 and they have three children, Kay, Barbara and James.

**THE HOUSE
OF
REPRESENTATIVES**

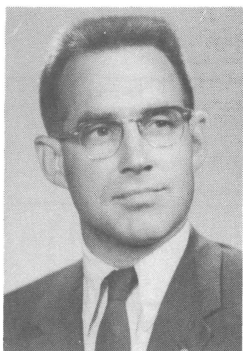
STATE OF WASHINGTON
ROSTER OF MEMBERS
House of Representatives

NAME	ADDRESS	DIST. NO.	POLITICAL PARTY
ACKLEY, Norman B.	16923-A Maplewild, Seattle	31	D
ADAMS, Alfred O.	909 Melinda Lane, Spokane	6	R
AHLQUIST, H. Maurice	Hilltop Ranch, Touchet	11	R
ANDERSEN, James A.	3008 - 98th N. E., Bellevue	48	R
ANDERSON, Eric O.	627 Grand Ave., Hoquiam	21	D
AVEY, Art	Kettle Falls	2	D
BACKSTROM, Henry	508 Olympic Ave., Arlington	39	D
BECK, C. W. "Red"	Rt. 5, Box 15, Port Orchard	23	D
BEIERLEIN, W. J. (Joe)	112 E. Main St., Auburn	30	D
BERGH, Arnie	822 W. 107th, Seattle	44	D
BERNETHY, Robert	Sultan	39	D
BIGLEY, John	26903 - 148th S. E., Kent	30	D
BOZARTH, Horace W.	Mansfield	1	D
BRAUN, Eric D.	225 Cottage Ave., Cashmere	12	D
BRINK, Daniel	320 Alaska Bldg., Seattle	35	D
BROUILLET, Frank "Buster"	619 7th Ave., S. W., Puyallup	25	D
BURNS, J. Bruce	1218 So. Ridgewood, Tacoma	27	D
BURTCH, Jack L.	2623 Bench Drive, Aberdeen	21	D
CAMPBELL, Keith H.	W. 2204 Rockwell Ave., Spokane	5	D
CANFIELD, Damon R.	2305 So. Columbia, Granger	15	R
CECIL, Richard C.	1914 Pike, Richland	16	D
CLARK, Cecil C.	Route 2, Box 134, Wapato	15	R
CHATALAS, Wm. "Bill"	2802 33rd S., Seattle	33	D
COMFORT, Pat	3516 No. Proctor, Tacoma	26	R
CONNER, Paul	Route 1, Box 60, Port Angeles	24	D
COPELAND, Tom	Route 3, Walla Walla	11	R
DAY, Wm. S. (Bill)	S. 3004 Cherry Lane, Rt. 3, Spokane	4	D
DeJARNATT, Arlie U.	1215 - 23rd Ave., Longview	18	D
EDWARDS, A. E.	2001 Sunset Dr., Bellingham	42	D
ELDRIDGE, Donald "Don"	1535 Kincaid St., Mt. Vernon	40	R
ENGLAND, Jack	4703 - 11th N.E., Seattle	32	R
EPTON, Kathryn	7 North Walnut Road, Spokane	4	D
EVANS, Daniel J.	4323 E. 44th, Seattle	43	R
FARRINGTON, Clayton	517 E. 14th, Olympia	22	D
FLANAGAN, S. E. "Sid"	Rt. 1, Quincy	13	R
FOLSOM, Morrill F.	1805 Harrison, Centralia	20	R
GALLAGHER, P. J. "Jim"	125 So. 72nd St., Tacoma	28	D
GARRETT, Avery	450 Langston Road, Renton	47	D
GLEASON, Mrs. Marian C.	1503 So. 9th, Tacoma	27	D
GOLDMARK, John	Star Route, Okanogan	1	D
GOLDSWORTHY, Robert F.	Route 2, Rosalia	9	R
GORTON, Slade	1549 E. 102nd, Seattle	46	R
HARRIS, Edward F.	716 Old National Bank Bldg., Spokane	7	R
HAWLEY, Dwight S.	2216 W. 56th St., Seattle	44	R
HENRY, Mildred E.	Rio Vista, White Salmon	17	D
HOLMES, Paul	605 W. 10th, Ellensburg	13	D
HOOD, Jack C.	P. O. Box 61, Ferndale	41	R
HUNTLEY, Elmer C.	Thornton	9	R
HURLEY, Mrs. Joseph E.	730 E. Boone Ave., Spokane	3	D
JOHNSTON, Elmer E.	714 W. 14th Ave., Spokane	6	R

STATE OF WASHINGTON
ROSTER OF MEMBERS
STATE HOUSE OF REPRESENTATIVES—Continued

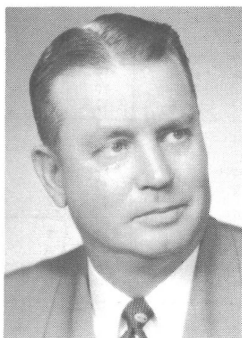
NAME	ADDRESS	DIST.NO.	POLITICAL PARTY
JUELING, Helmut L.	215 Contra Costa, Fircrest, Tacoma	29	R
KING, Chet	P. O. Box 267, Raymond	19	D
KINK, Dick J.	1124 - 15th St., Bellingham	42	D
KIRK, Mrs. Douglas	1236 Bigelow N., Seattle	36	R
KLEIN, William C.	203 N. Morrison Road, Vancouver	49	D
LEIBOLD, James N.	1532 No. Lyndale, Pasco	16	D
LELAND, Alfred E. (Al)	8822 Terrace Drive, Kirkland	48	R
LEWIS, Harry B.	Route 4, Box 532, Olympia	22	R
LITCHMAN, Mark Jr.	13706 - 2nd N. E., Seattle	45	D
LYBECKER, Gus	Arlington & 11th St., Pomeroy	10	R
MAHAFFEY, Audley F.	5241 - 16th N. E., Seattle	46	R
MARDESICH, August P.	4712 Mermont Drive, Everett	38	D
MARSH, Shirley R.	1320 Hudson St., Longview	18	D
MAY, William J. S.	W. 711 Waverly Place, Spokane	3	D
McCORMICK, W. L. "Bill"	3909 W. Lyons, Spokane	5	D
McDOUGALL, Bob	Route 2, Box 2001, Wenatchee	12	R
McELROY, Drennan	Ruby, Route 2, Usk	2	D
McFADDEN, James L.	1217 E. 2nd St., Port Angeles	24	D
METCALF, Jack	Box 192, Mukilteo	38	R
MEYERS, Victor A. Jr.	18641 - 4th S. W., Seattle	31	D
MOOS, Donald W.	Edwall	8	R
MORPHIS, Richard W.	3504 Riverview Drive, Spokane	7	R
MORRISSEY, Ed	16 South 12th Ave., Yakima	14	R
NEWSCHWANDER, Charles E.	2140 Bridgeport Way, Tacoma	29	R
NICHOLSON, Pat	1120 - 8th St., Bremerton	23	D
O'BRIEN, John L.	803 Joseph Vance Bldg., Seattle	33	D
O'CONNELL, W. J.	509 So. 51st St., Tacoma	28	D
O'DONNELL, Ann T.	1815 E. Harrison, Seattle	37	D
OLSEN, Ray	1400 Hubbell Place, Seattle	35	D
PENCE, Stanley	Route 8, Box 81, Yakima	14	R
PERRY, Robert A. (Bob)	13003 Meridian, Seattle	45	D
POFF, Dick	2405 - 6th Place, Renton	47	D
PRITCHARD, Joel	3233 - 29th W., Seattle	36	R
RICKDALL, Ralph L.	P. O. Box 307, Burlington	40	R
RITNER, Roy R.	919 No. 7th, Shelton	24	D
SAWYER, Leonard A. (Len)	703 - 4th St., S. E., Puyallup	25	D
SCHAEFER, Robert M.	6101 Highland Drive, Vancouver	49	D
SHROPSHIRE, Lincoln E.	606 Miller Bldg., Yakima	14	R
SILER, Harry A.	Randle	20	R
SMITH, Samuel J. (Sam)	1814 - 31st, Seattle	37	D
SWAYZE, Mrs. Thos. A. (Frances)	1500 No. Warner, Tacoma	26	R
TAYLOR, Richard "Dick"	721 - 5th St., Mukilteo	38	D
TESTU, Jeanette	2138 - 41st S. W., Seattle	34	D
UHLMAN, Wes C.	719 Artic Bldg., Seattle	32	D
WANG, Arnold S.	2001 Nipsic, Bremerton	23	R
WEDEKIND, Max	3729 - 40th S. W., Seattle	34	D
WILLIAMS, Walter B.	3871 - 45th N. E., Seattle	43	R
WINTLER, Miss Ella	800 E. 24th St., Vancouver	49	R
WITHERBEE, C. G. "Curley"	16824 - 12th S. W., Seattle	31	D

Representatives



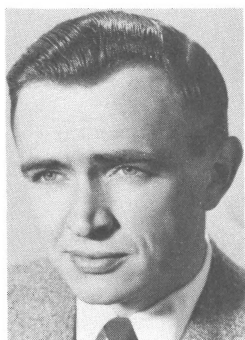
ACKLEY, NORMAN B. (Democrat)
Representative from the 31st District of King County. Is serving his second term in the House. Born in Vancouver, Wash. in 1920. He is a graduate of the U. of Wash. with B.S. and LL.B degrees. He is a practicing attorney. World War II served 4 years in Air Corps. Is a member of Legal Honorary - Phi Alpha Delta. Married and has a son.

ADAMS, DR. ALFRED O. (Republican)
Representative from the 6th District of Spokane County. Legislative Experience-1953-53 Ex.-55-57-59 59 Ex. Born in Paola, Kansas in 1897. Received his M.D. Degree in 1924 from Wash. University, St. Louis, Mo. Is a Physician and Surgeon. Served 2 years in World War I. Belongs to Masons and is a Shriner. Married and has a son.



AHLQUIST, H. MAURICE (Republican)
Representative from the 11th District of Walla Walla County. Serving his third term. Born in Denver, Colorado in 1902. He has an A.B. Degree from Dartmouth College. He is a farmer and is in processing and merchandising business. Member Interstate Compact Commission. Belongs to the Elks, Farm Bureau, Grange, Lambda Chi Alpha Fraternity. Married and has two children.

ANDERSEN, JAMES A. (Republican)
Representative from the 48th District of King County. Served in 1959 Regular and Extra Session. He was born in Auburn in 1924. Has B.A. Degree in Political Science from the U. of W. also an LL.B. and is an attorney. Combat Infantryman during World War II. Belongs to veterans and community organizations. Married and has an infant son.



Representatives

ANDERSON, ERIC O. (Democrat) Representative from the 21st District of Grays Harbor County. Serving his first term. Born in New Zealand in 1902. High school graduate and is now a purchasing agent and logging engineer. Belongs to the Grange and Masonic Lodge. He is married. Has two grown children and lost a son in Korea.



AVEY, ART (Democrat) Representative from the 2nd District comprising Pend Oreille and Stevens Counties. Will be serving his second term. Born in Stevens County in 1918. Graduated from Spokane Junior College and attended W.S.U. and Gonzaga. He has an Associate of Arts Degree. Served in the Army Air Force 3½ years. Is a Mason, Shriner, Elk, Eagle, Lion and also belongs to veterans and civic organizations. Married and has four children.

BACKSTROM, HENRY (Democrat) Representative from the 39th District of Island and Snohomish Counties. Appointed after the 1957 Session-served 1959 , 59 Ex. Mayor of Arlington. Born in New Britain, Conn. in 1897. Graduate of Olds College of Agriculture and also attended Edson Institute and is a Ford dealer and truck fabrication plant owner. Member Elks, Lions, Washington Athletic Club, Everett Yacht Club and Chr. Trustees of WSADA Insurance Association. Married and has three children.



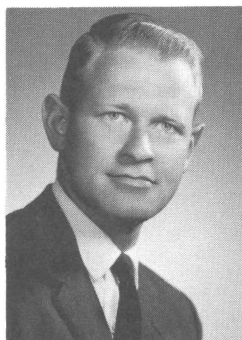
BECK, CLIFFORD W. "RED" (Democrat) Representative from the 23rd District of Kitsap County. Newly elected member of the House. He was born in Bloomington, Ind. in 1907. Graduated from high school and attended Stanford University. Served 10 years in the Navy. Worked as a naval civilian employee and is a retired naval ordnance engineer. He is self employed as a property manager. Member of B.P.O. Elks. He is married and has no children.

Representatives



BEIERLEIN, W. J. (Democrat) Representative from the 30th District of King County. First elected in 1938 he will be serving his twelfth term. He was born in North Dakota in 1891. He is in food and men's clothing business in Auburn. He has been on the Auburn City Council. Representative Beierlein is married.

BERGH, ARNIE (Democrat) Representative from the 44th District of King County. Serving his first term in the House. He was born in Seattle in 1931. Has a Bachelor of Arts Degree from the U. of W. Owner of an Insurance Agency. Served for 4 years as a jet pilot in the U. S. Air Force. Belongs to Beta Theta Pi Fraternity. He is married and has a son and daughter.



BERNETHY, ROBERT (Democrat) Representative from the 39th District of Island and Snohomish Counties. He will be serving his 12th term having first served in the 1939 Session. Born in Randall, Minn. in 1896. He has a grade school education and is a woodsman. Served in World War I. Member of Eagles, Elks and VFW. Married and has four children.

BIGLEY, JOHN (Democrat) Representative from the 30th District of King County will be serving his third term. Born in Streator, Ill. in 1900. Graduate of the U. of Washington also attended W.S.U. and Central College of Education in Ellensburg. He is a retired public school administrator and tree farmer. Member of the Elks, Masons and Grange. He is married and has three grown sons.



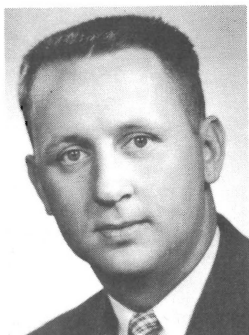
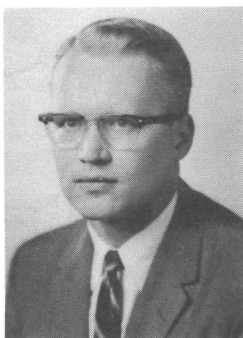
Representatives

BOZARTH, HORACE W. (Democrat) Representative from the 1st District comprising Douglas and Okanogan Counties. This will be his fourth term in the House. He was born in Fairfield, Wash. in 1894. Has a B.A. Degree from Gonzaga University having graduated with the class of 1917. Engaged in farming he is a member and officer of the Washington State Grange. Served two terms as a County Commissioner of Douglas County. He is married.



BRAUN, ERIC D. (Democrat) Representative from the 12th District of Chelan County will be serving his third term in the House. He was born in Norfolk, Nebr. in 1910. He is a funeral director. Serving his second term as mayor of Cashmere. Member of the Masons and Rotary Club. He is married and has two children.

BRINK, DANIEL (Democrat) Representative from the 35th District of King County and will be serving his second term in the Legislature. Born in Minneapolis, Minn. in 1929. He attended the U. of Washington where he received his B.S. and LL.B. Degrees and is now an attorney. During the Korean War he served in the Army and is now a reserve Captain. He belongs to Phi Kappa Psi and Phi Alpha Delta. He is married.

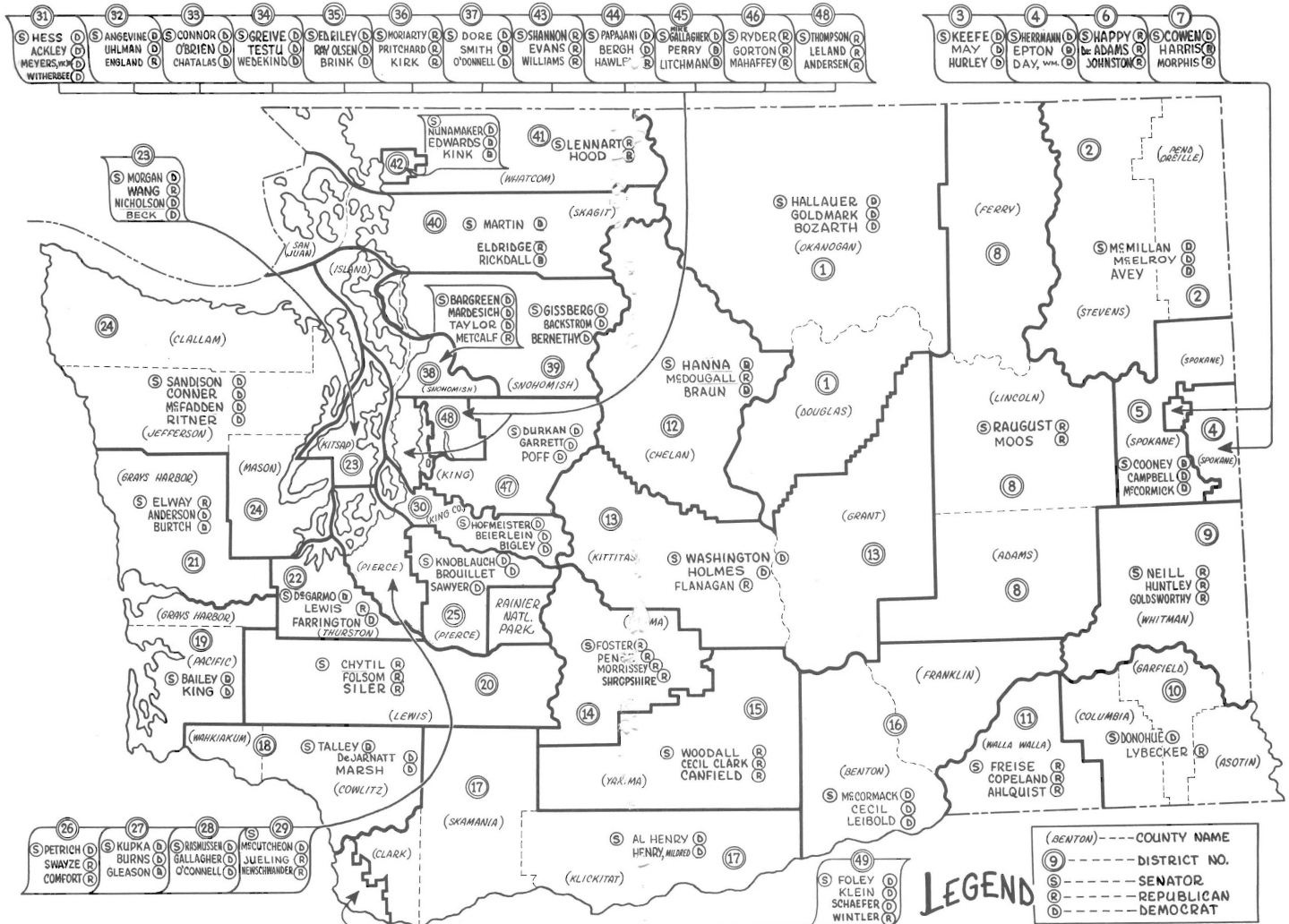


BROUILLET, FRANK "BUSTER" (Democrat) Representative from the 25th District of Pierce County will be serving his third term. Born in Puyallup in 1928. He attended W.S.U., College of Puget Sound and University of Montana. He has a B.A. in Economics; B. Ed. and M.A. is a teacher and counselor in Tacoma Public Schools. Served in the Army Intelligence Dept. Member of the Elks, Masons, Grange also Pi Gamma Mu and Sigma Chi Fraternities. He is married and has one child.



Dieter A. Meyers
SECRETARY OF STATE

STATE OF WASHINGTON ~ 1961 LEGISLATIVE ROSTER

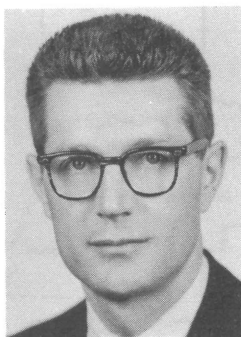


Representatives



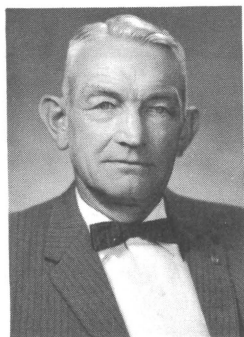
BURNS, J. BRUCE (Democrat) Representative from the 27th District of Pierce County. Will be serving his third term in the House. He was born in Tacoma in 1925. Graduated from Willamette University with an LL.B. Degree and is a lawyer. Served in the Marines during World War II. Member of the Eagles and Moose lodges. He is married.

BURTCH, JACK L. (Democrat) Representative from the 21st District of Grays Harbor County. He will be serving his first term in the House. Born in Portland, Oregon in 1926. He has a B.A. Degree in Political Science from Whitman College and LL.B. Degree from the University of Washington Law School. He is now a practicing lawyer. During World War II he served in the U. S. Navy. He is married and has 2 sons and a daughter.



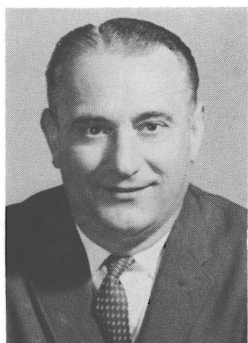
CAMPBELL, KEITH H. (Democrat) Representative from the 5th District of Spokane County. Will be serving his third term. Born in Harlowton, Mont. in 1920. Has a B.A. from University of Wash. and graduated from Gonzaga with a LL.B. Degree. He is a practicing attorney. Served in Air Force during World War II and Korean conflict. Member of Moose, VFW, State Bar Assn. and several school organizations. He is married and has four children.

CANFIELD, DAMON R. (Republican) Representative from the 15th District of Yakima County. Legislative Experience-1953-53 Ex. -55-57 and 59 and 59 Ex. He was born in Arkansas in 1897. He attended the Seattle Public schools and the U. of Washington, received degree from W.S.U. in 1921. During World War I served in the Navy. Is engaged in fruit and cattle ranching near Granger. Member Am. Legion and Grange. Married and has two children.



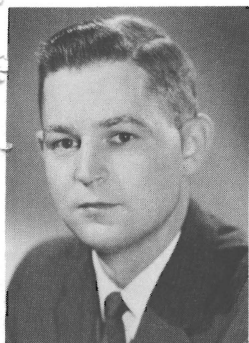
Representatives

CECIL, RICHARD C. "DICK" (Democrat) Representative from the 16th District comprising Benton and Franklin Counties. This is his first term in the House. Born in Walla Walla in 1924. Graduated from the Walla Walla high school and is now engaged as a building contractor. Served in the U. S. Navy as B.M. 2/c from 1942-45. Member of American Legion, VFW and Jr. C. of C. Married and has three children.



CHATALAS, WILLIAM (Democrat) Representative from the 33rd District of King County will be serving his first term in the House. He is (Greek origin) born in Constantinople, Turkey in 1907. He has a high school education and is a sales supervisor. Is affiliated with the Order of AHEPA, Rainier Business Mens' Club and State Director Greek War Relief Assn. He is married and has three sons.

CLARK, CECIL C. (Republican) Representative from the 15th District of Yakima County will be serving his sixth term in the House. Born in Yakima in 1896. He attended the University of Washington for one year and is a retired fruit grower and general farmer. Member of the Grange, Farm Bureau, Masons, Shrine and Elks. Married and has three children.



COMFORT, PATRICK C. (PAT) (Republican) Representative from the 26th District of Pierce County will be serving his first term. Born in Tacoma in 1930. Has a B.A. from Gonzaga U. -1952; and LL.B. from New York U. School of Law in 1955. He is an attorney. Served in U.S. Army in 1955-57. Member of B.P.O.E., Eagles; Lions, YMBC and Alpha Sigma Nu. Married and has three children.

Representatives



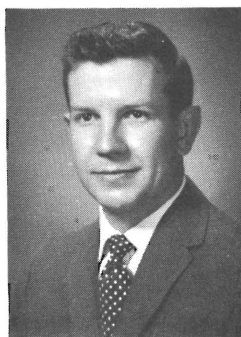
CONNER, PAUL HERBERT (Democrat) Representative from the 24th District comprising Clallam, Mason & Jefferson Counties. Was appointed to the Senate in 1957, now serving his second term in the House. Born in Port Angeles in 1925. Went to Western College of Ed., U. of W. & Business College. Clallam Co. Young Man of the Year-1959 & finalist-Wash. State Young Man of the Year-1960. State Trustee-Wash. State Eagles. Belongs to Elks, Eagles, Grange & Jr. C. of C. Married and has four children.

COPELAND, THOMAS L. (Republican) Representative from the 11th District of Walla Walla Co. Will be serving his third term. Born in Pendleton, Ore. in 1924. He attended Kemper Military School and W.S.U. He is a farmer-raising wheat, green peas and livestock. Served as a Captain in the Army in World War II. Member of the Elks, American Legion, Masons, Farm Bureau, Ch. of Commerce and Sigma Nu Fraternity. He is married and has three children.



DAY, WILLIAM S. (Democrat) Representative from the 4th District of Spokane County will be serving his second term. He was born in Rockford, Ill. in 1923. Graduated from high school and Palmer College of Chiropractic in Davenport, Iowa. He is a Chiropractor. Served in the Army during World War II. Member of Kiwanis and VFW. He is married and has five children.

DeJARNATT, ARLIE U. (Democrat) Representative from the 18th District comprising Cowlitz and Wahkiakum Counties. He was born in Glezen, Ind. in 1923. Has an A.B. Degree from Cornell College - 1948, and earned his M.A. from Colorado State College in 1951. He is a high school teacher and coach. Served in the U.S. Marines in World War II. Married and has five children.



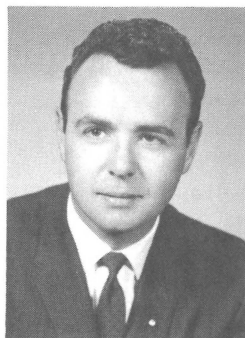
Representatives

EDWARDS, A. E. (Democrat) Representative from the 42nd District of Whatcom County. Legislative Experience-House 33-33 Ex. -35-55-57-59-59 Ex. Served in the Senate in 1937-39-41-43-44-Ex. -45-47-49-50 Ex. 51-51 Ex. He was born in Canada in 1879. Has had 12 years schooling and 4 years navigation training aboard ship. He is a farmer. Belongs to Masons, Odd Fellows, Lions, Eagles, Elks and Grange. He is married and has one son.



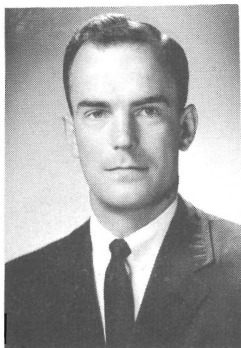
ELDRIDGE, DON (Republican) Representative from the 40th District of San Juan and Skagit Counties. Elected in 1952 he is now serving his fifth term in the House. Born in Mount Vernon in 1919. College graduate. Partner in a stationery store. Active in Boy Scout and school activities. Served in World War II. Member of the Rotary, Chamber of Commerce, served as past Vice-President of U. S. Junior Chamber of Commerce. He is married and has four children.

ENGLAND, JACK (Republican) Representative from the 32nd District of King County. Serving his first term. He was born in Mount Vernon in 1927. Attended U.W. graduating with B.A. and LL.B. Degrees. He is an attorney. Served in Army Air Corps during World War II. Belongs to the Lions. He is married and has two children.



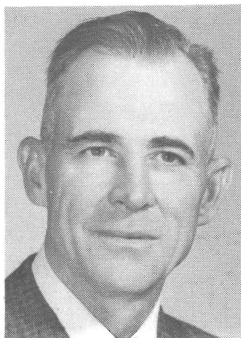
EPTON, KATHRYN (MRS. JOHN W.) (Democrat) Representative from the 4th District of Spokane County. Will be serving her third term. She was born in Garwood, Idaho. Attended Washington State, Gonzaga and Arizona Universities and Holy Names College. Legislative delegate to Golden Anniversary White House Conference on Children and Youth - 1960. Homemaker and writer. Married and has five children.

Representatives



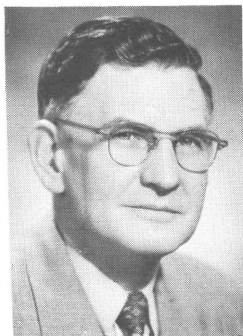
EVANS, DANIEL J. (Republican) Representative from the 43rd District of King County. Serving his third term. Born in Seattle in 1925. Received his Master's Degree in Science (Civil Engineering) from the U. of Washington and is a Civil Engineer. Navy service-43-46 and Lt. 1952-53. Member Municipal League, Am. Soc. of Civil Engineers and is on Exec. Board, Chief Seattle Council Boy Scouts, Exec. Board of the Seattle King Co. Safety Council. Married and has a son.

FARRINGTON, CLAYTON (Democrat) Representative from the 22nd District of Thurston County. Served in 1949 - 50 Ex. -55-57-59 and 59 Ex. Born in Ottumwa, Iowa in 1899. Graduate of the University of Montana with A.B. and M.A. Degrees. Teaches history in Olympia High School. Served in World War I., National Guard 12 years. Member Grange, Elks, P.T.A. Am. Legion, Am. Fed. of Teachers and Musicians and Wash. Education Assn. He is married and has two children.



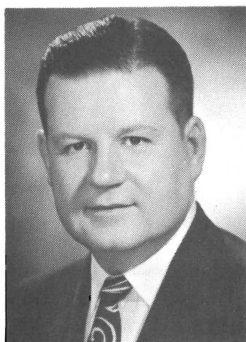
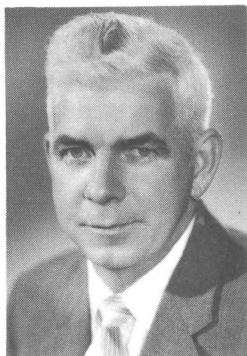
FLANAGAN, SID (Republican) Representative from the 13th District of Grant and Kittitas Counties. Newly elected will be serving his first term. Born in Bellingham in 1909. Graduated from the U. of W. with an A.B. Degree. He majored in Public Utilities. He is a farmer and engages in cattle feeding. Belongs to the Elks and Moose. He is married and has three children.

FOLSOM, MORRILL F. (Republican) Representative from the 20th District of Lewis County. Served in the House in 1955 and 1957 therefore will be serving his third term. Born in Kent, Wash. in 1905. He graduated from the University of Wash. in 1928. He is a wholesale grower and shipper of forced Azaleas. Member of Kiwanis and Masonic Bodies. Married and has three children.



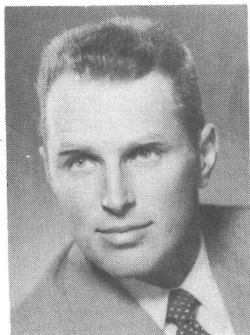
Representatives

GALLAGHER, P. J. (JIM) (Democrat) Representative from the 28th District of Pierce County. Serving his first term. Born in Taylor, (King County) in 1915. He graduated from Washington State University in 1938. Owner-Operator of a service station. Member of the Loyal Order of Moose. Married and has six children.



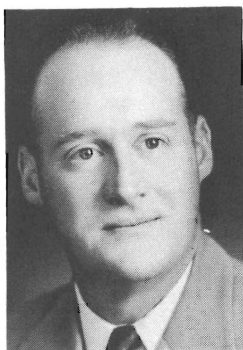
GARRETT, AVERY (Democrat) Representative from the 47th District of King Co. Will be serving his second term in the House. Born in the State of Georgia in 1916. He has a high school education and is employed as a sheet metal worker. Member of Renton City Council. Belongs to St. Andrews' No. 35, F. & M, Issaquah Chapter No. 39 RAM and is married and has four children.

GLEASON, MRS. MARIAN C. (Democrat) Representative from the 27th District of Pierce County. This is her third term in the House. She was born in Seattle. Attended Business College and at the present time is a homemaker. She is married and has five children.



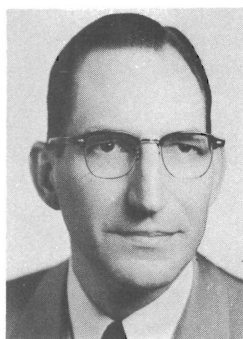
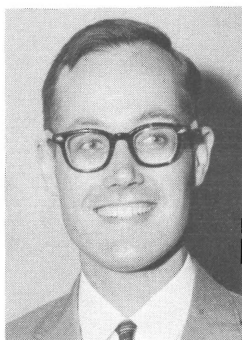
GOLDMARK, JOHN (Democrat) Representative from the 1st District of Douglas and Okanogan Counties. Legislative Experience- 1957, 59 and 59 Ex. Born in Scarsdale, New York in 1917. Attended Harvard Law School and Haverford College. He is a rancher and member of the Grange. Served in the Navy during World War II and is a Lt. Commander in the Navy Reserves. Married and has two sons.

Representatives



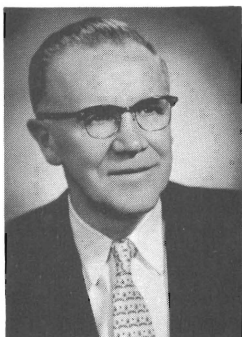
GOLDSWORTHY, ROBERT F. (Republican) Representative from the 9th District of Whitman County. This will be his third term in the House. Born in Spokane in 1917. Graduated from W.S.U. and is engaged in farming. Served as a combat veteran in World War II and Korea. Member of the Masonic Lodge. He is married and has two children.

GORTON, SLADE (Republican) Representative from the 46th District of King County. Will be serving his second term. Born in 1928 in Chicago, Ill. He attended Dartmouth College has an A.B. and received an LL.B. Degree from Columbia University. Member of Gamma Delta Chi, Phi Beta Kappa and Phi Delta Phi Fraternities. Served in U. S. Army 1946-47 and Air Force from 1953-56. He is an attorney. Married and has two children.



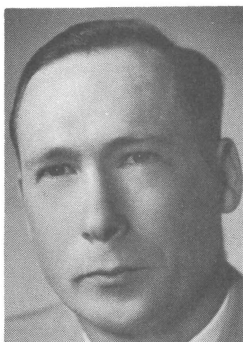
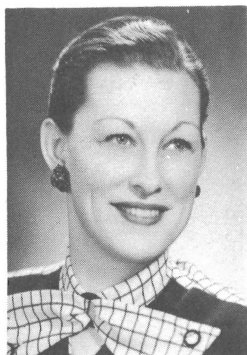
HARRIS, EDWARD F. (Republican) Representative from the 7th District of Spokane County. Will be serving his fourth term. He was born in Harrison, Idaho in 1909. Received his B.S. Degree from the School of Business, University of Idaho and his LL.B. Degree from Gonzaga University. He is an attorney. A member of St. Mark Lutheran Church. He is married and has a son and daughter.

HAWLEY, DWIGHT S. (Republican) Representative from the 44th District of King County. Born in Seattle in 1896. He has served four terms - five special sessions. He attended the University of Washington. Owns and operates an Insurance Agency. During World War I he served on the Mexican Border. Member of the Elks, Eagles, American Legion, VFW, Kiwanis, Seattle C. of C., Ballard Commercial Club, Sunset Hill improvement Club. Married and has three grown sons.



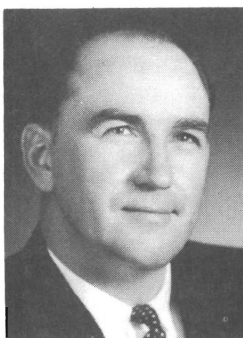
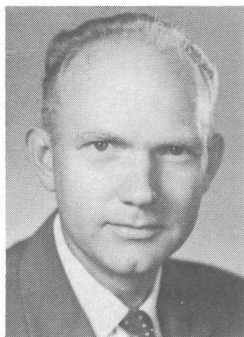
Representatives

HENRY, MILDRED E. (Democrat) Representative from the 17th District comprising Skamania, Klickitat and part of Clark County. She will be serving her third term in the House. Born in Klickitat, she has a business college education. Senator Al Henry and Mrs. Henry are the first husband-and-wife team in the history of the Washington Legislature. She is a homemaker and has two daughters. Member of Rebekahs, Royal Neighbors and Emblem Club.



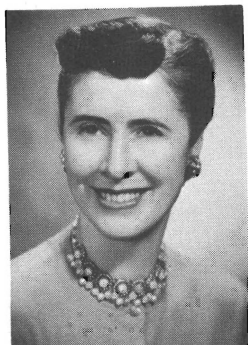
HOLMES, PAUL (Democrat) Representative from the 13th District comprising Grant and Kittitas Counties. Serving his second term. He was born in Chillicothe, Ohio in 1921. High school graduate and he attended Metropolitan Business College in Seattle. Employed as a carpenter. He served six years in the U. S. Marines. Member of the Masons and Grange. Married and has three children.

HOOD, JACK C. (Republican) Representative from the 41st District of Whatcom County. This will be his second term in the House. He was born in Ferndale in 1919. Attended the public schools of Ferndale and went to Whitman College. He is Vice-Pres. of the First National Bank of Ferndale. Was in the U. S. Navy during World War II. Belongs to Elks, Grange, Farm Bureau and Phi Delta Theta Fraternity. Married and has four children.



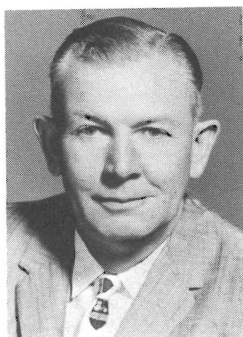
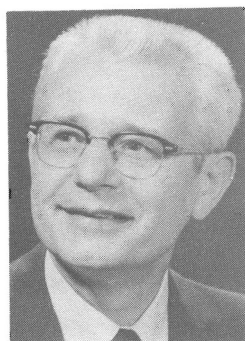
HUNTLEY, ELMER C. (Republican) Representative from the 9th District of Whitman County. Serving his third term. He was born in St. John in 1915. Attended Washington State University and is now a farmer raising grain and livestock. Member of the Masons and Mystic Shrine. Rep. Huntley is married.

Representatives



HURLEY, MRS. JOSEPH E. (Democrat) Representative from the 3rd District of Spokane County will be serving her fifth term in the House. She was born in Winnebago, Minnesota. Has a B.A. Degree from Holly Names College and is now a homemaker. She is married and has four children.

JOHNSTON, ELMER E. (Republican) Representative from the 6th District of Spokane County. Will be serving his eighth term. He was born in Oakesdale in 1898. Graduated from Notre Dame and Georgetown Universities. He has LL.B. and LL.M. Degrees and is an attorney. Served during World War I. Belongs to the Elks, and Knights of Columbus. Married and has two children.



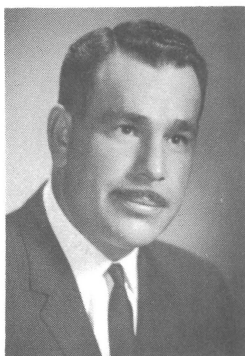
JUELING, HELMUT L. (Republican) Representative from the 29th District of Pierce County. This will be his first term. He was born in Loup City, Nebr. in 1913. Graduate of Stadium High and has a B. A. Degree from the University of Puget Sound. Owns a laundry and linen supply business. He is married and has two daughters.

KING, CHET (Democrat) Representative from the 19th District of Pacific and part of Grays Harbor County. First elected to serve in the 1945 Session he has continually served therefore this will be his ninth term. He was born in Doty, Wash. in 1901. A high school graduate and works as a Boom-Man and Union Representative. Served three years in U.S. Naval Air Corp. Member of Eagles, Elks and International Woodworkers of America. He is married and has three children.



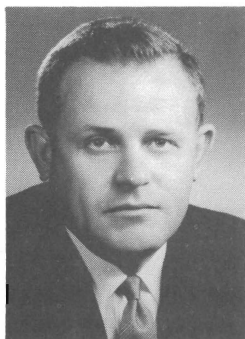
Representatives

KINK, DICK J. (Democrat) Representative from the 42nd District of Whatcom County will be serving his third term in the House. Born in Bellingham in 1921. He was in the Navy during World War II. At present he is a captain of a purse seiner. Member of the Bellingham Junior Chamber of Commerce, Lions, Am. Legion and Secretary-Treasurer of Drum Seiner Marketing Assn. He is married and has a daughter.



KIRK, MRS. DOUGLAS (GLADYS) (Republican) Representative from the 36th District of King County. Served in the House in 1957 and unexpired term of Rep. Moriarty in 1959. She was born in Gypsum, Colorado. Graduate of high school and has a business training education. Affiliated with B.P.W., American Legion Aux., Pres. of Queen Anne Community Club, League of Women Voters. She is a homemaker. Married and has two sons.

KLEIN, WILLIAM C. (Democrat) Representative from the 49th Dist. of Clark Co. will be serving 2nd term. Born in Oak Park, Ill. in 1921. Attended W.S.U. and has B.S. and LL.B. from Wash. Univ. He is a lawyer and has served as an Asst. Atty. General; City Atty; and member of Wash. Tax Advisory Council. Served in U.S. Army. Belongs to B.P.O.E., Lions, Alpha Epsilon and Delta Theta Phi Fraternities. He is President of the Clark-Skamania County Bar. Assn. Married and has two children.



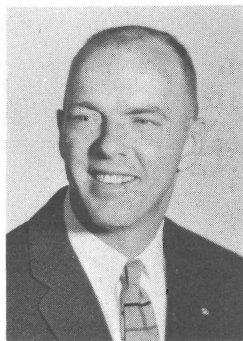
LEIBOLD, JAMES N. (Democrat) Representative from the 16th District comprising Benton and Franklin Counties. Newly elected will be serving first term. Born in East Dubuque, Ill. in 1918. High school graduate and is Asst. Business Manager, Electrical Workers, Local Union. 112, I.B.E.W. Is Exec. Board member of Wash. Labor Council, A.F.L. - C.I.O. Served in the Navy in World War II. Belongs to Eagles and Moose. He is married and has 3 children.

Representatives



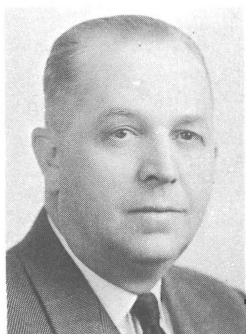
LELAND, ALFRED E. (Republican) Representative from the 48th District of King County. He will be serving his third term. Born in St. Marie, Ida. in 1921. Attended Boeing School of Aeronautics in Oakland, Calif. In retail furniture and appliance business. U.S. Army Air Corps 5½ years during World War II. Member of Kiwanis, Elks, Sons of Norway, Chamber of Com. and Wash. State Good Roads Association. He is unmarried.

LEWIS, HARRY B. (Republican) Representative from the 22nd District of Thurston County. Will be serving his first term. Born in Pittsburgh, Penn. in 1927. Attended College of Puget Sound and graduated from the U. of W. He is a logging engineer. Served in the 88th Division (Army) in Italy. Belongs to Society of American Foresters, Elks, Phi Delta Theta and American Legion. Married and has three children.



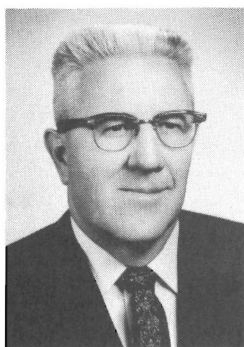
LITCHMAN, MARK, JR. (Democrat) Representative from the 45th District of King Co. Will be serving his fourth term. Born in Seattle in 1925. Has a B.A. Degree in Criminology and Sociology and LL.B. from the University of Wash. He is an attorney. In the Navy during World War II. Belongs to American Legion, DAV, Jewish War Vets, State Bar Assn., Phi Alpha Delta, YMCA, PTA, B'Nai B'rith. Married and has three children.

LYBECKER, GUS (Republican) Representative from the 10th District comprising Asotin, Columbia and Garfield Counties. Served in 1955 and 1957 so will be serving his third term. Born in Washington in 1887. Graduated from the U. of Wash. with a B.A. and M.A. Degrees also has 2 years law school. He has been a school administrator and was in television business but is now retired. He is married.



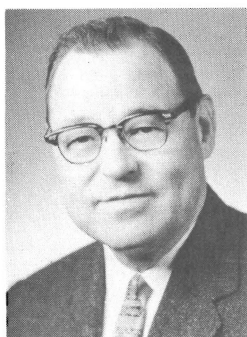
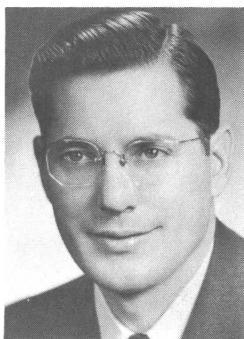
Representatives

MAHAFFEY, AUDLEY F. (Republican) Representative from the 46th District of King County. Served in 1945, 47, 59, 59 Ex. so this will make his fourth term. He was born in Pawnee, Okla. in 1899. Graduated from the U. of W. with a Masters Degree in History and has taught school for over 35 years. Was in the Navy during World War One. Belongs to Masons, I.O.O.F. and Shrine. He is married and has three children and one son deceased.



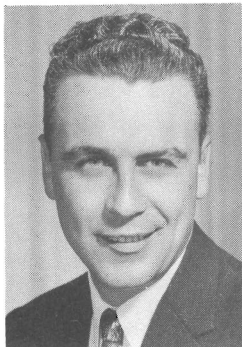
MAY, WILLIAM J. S. (Democrat) Representative from the 3rd District of Spokane County. Newly elected member of the House. Born in England in 1902. High school graduate and has taken special courses in advertising & electronics. He is a motion picture projectionist and Sec. of Spokane Labor Council for the past 10 years. Member Elks, Moose and Athletic Round Table. Married and has three children.

MARDESICH, AUGUST P. (Democrat) Representative from the 38th District of Island and Snohomish Counties. Legislative Experience-1950, 51, 53, 55, 57 and 59. Born in San Pedro, Calif. in 1920. Graduated from the U. of W. with B.A. and LL.B. Degrees and is an attorney. He is engaged in fish packing industry. Served in the Army during World War II. Member of Elks, VFW and American Legion. Married and has three children.



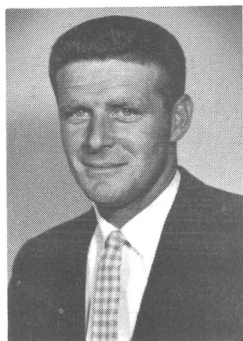
MARSH, SHIRLEY R. (Democrat) Representative from the 18th Dist. comprising Cowlitz and Wahkiakum Counties. Served in the Senate in 1941 and 1943. House in 1959 Session. Born in Kelso in 1906. Graduate of the U. of Wash. with A.B. and LL.B. Degree and is an attorney. He has served as city councilman, Co. Pros. Atty. and Asst. Atty. Gen. Lt. Col. in the infantry during World War II. Belongs to Eagles, Masonic Lodge, Columbia River Shrine and Kiwanis Club. He is married.

Representatives



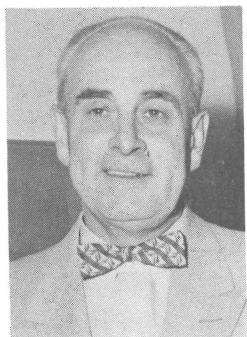
MCCORMICK, W. L. "BILL" (Democrat) Representative from the 5th District of Spokane County. Will be serving his third term in the House. Born in Waukon, Iowa in 1925. He is a staff representative for the United Steel Workers of America. Served as a tail gunner in the Air Force during World War II. Belongs to the Grange. He is married and has two daughters.

MCDUGALL, BOB (Republican) Representative from the 12th District of Chelan County. Will be serving his first term. Born in Cashmere in 1924. Graduate of Wenatchee Valley College and Washington State University. He is a fruit grower and fruit warehouse and storage manager. Served in U. S. Navy. Belongs to Masons, Elks, American Legion and the Grange. He is married and has three sons.



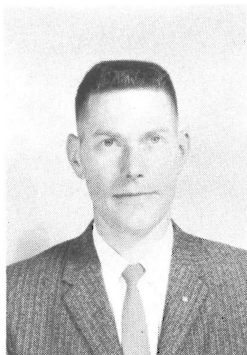
MCELROY, DRENNAN "MAC" (Democrat) Representative from the 2nd District of Pend Oreille and Stevens Counties. Newly elected member of the House. Born in Corydon, Iowa in 1900. Has had two years schooling in Business Administration. Served in Infantry during World War I. Belongs to Masons, Knights of Pythias, American Legion and the Grange. Married and has a son and daughter.

McFADDEN, DR. JAMES L. (Democrat) Representative from the 24th District comprising Clallam, Mason and Jefferson Counties. This will be his fourth term. Born in Victoria, B.C., Canada in 1899. Graduate of the U. of Toronto in Medicine and Surgery. He is in general practice of medicine and is a surgeon. Member of the Masons and Elks. Married and has one son.



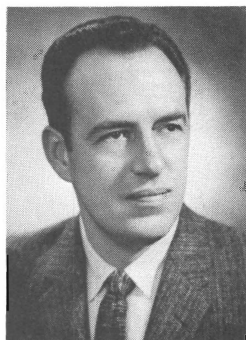
Representatives

METCALF, JACK (Republican) Representative from the 38th District of Island and Snohomish Counties. Newly elected member of the House. Born in Marysville in 1927. Graduate of Pacific Luther College and teaches Algebra and Mathematics. Served in the U. S. Army. He is married and has four daughters.



MEYERS, VICTOR A. JR. (Democrat) Representative from the 31st District of King Co. Will be serving his second term. Born in San Diego, Calif. in 1924. Attended Iowa State Teachers College, Seattle U. and U. of W. Law School. He is a manufacturer's agent. Served as a Capt. pilot in the Air Force during World War II—spending 1½ years overseas. Member of the Elks, Knights of Columbus, Am. Leg., VFW and PTA. Married and has four children.

MOOS, DONALD W. (Republican) Representative from the 8th District of Adams, Ferry and Lincoln Counties. Will be serving his second term. Born in 1923 in Spokane. Graduated from W.S.U. in 1947. with a B.S. Degree. He is a farmer. Infantryman in World War II. Member of Mason, Royal Arch Mason, Knight Templar, Shrine, Grange and Lambda Chi Alpha, Alpha Zeta, Phi Kappa Phi fraternities. Married and has two children.



MORPHIS, RICHARD W. (Republican) Representative from the 7th District of Spokane County. Will be serving his third term in the House. Born in Spokane in 1929. Graduated from Walla Walla College with B.A. in Business Administration and is business manager of a Spokane Sanitarium. Member of El Katif Shrine, Oriental Lodge #74 (F. & A.M.), Lions, Elks and Odd Fellows. Married and has one son.

Representatives



MORRISSEY, ED (Republican) Representative from the 14th District of Yakima County. Serving his second term. Born in Salt Lake City in 1923. Attended St. Martin's College, Seattle U. and graduated from the U. of W. with B.A. in Journalism in 1949. He is News and Program Director of KNDO-TV in Yakima. Served in U.S. Marine Corps during World War II. Belongs to BPOE, Yakima Lodge, 318 and Kiwanis Club. Married and has four children.

NEWSCHWANDER, CHAS. E. (Republican) Representative from the 29th District of Pierce County. Will be serving his first term. Born in Tacoma in 1920. Attended U. of Puget Sound and is a graduate from the U. of Oregon Dental School. He is a dentist. Served in the Navy during World War II and Korean conflict. Belongs to Lions, F. & A. M. #224 and Scottish Rite. Married and has four children.



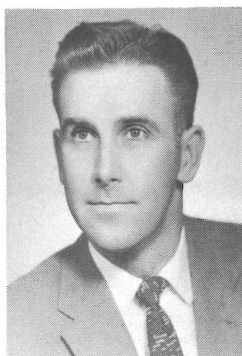
NICHOLSON, PAT (Democrat) Representative from the 23rd District of Kitsap County. Will be serving his third term. He was born in Tacoma in 1929. University graduate and attended Army General School (Intelligence Analyst.) He is a teacher and writer. Served in the Army in 1952-54. Belongs to YMCA, PTA, A.F.T.R.A., Phi Alpha Delta Law Fraternity and the Grange. He is married and has three children.

O'BRIEN, JOHN L. (Democrat) Representative from the 33rd District of King Co. Will be serving his 10th term. Born in Seattle in 1911. Graduate of Western Institute of Professional Accounting, is a C.P.A. has done some extension work from the U. of W. Was in the Coast Guard. Member of Eagles, Knights of Columbus and Washington Athletic Club. He was majority leader in 1951-53 and Speaker of the House in-55-57 and 59. Married and has four children.



Representatives

O'CONNELL, W. J. (Democrat) Representative from the 28th District of Pierce Co. Will be serving his second term. Born in Tacoma in 1922. Graduate of University of Puget Sound with A.B. and B.E. Degrees. He is an educator and coach in Tacoma. Served as a pilot in the Army Air Force. Belongs to the Eagles. He is married and has three sons.



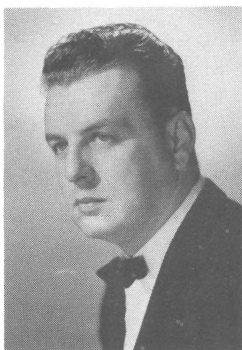
O'DONNELL, ANN TERESA (Democrat) Representative from the 37th District. She was appointed in 1959 to fill Rep. Dore's place when he was appointed to Senate. She will be serving her second term. Born in Helena, Mont. in 1935. Has a B.A. Degree from the Seattle U. and attended U. of W. Law School for one year. She is in Public Relations work. Member Capitol Hill Commercial Club, Urban League, Totem Chapter-B.P.W., on King Co. Democratic Executive Board. She is unmarried.

OLSEN, RAY (Democrat) Representative from the 35th District of King County. Will be serving his sixth term. Born in Baker, Ore. in 1904. Graduate of a business College. Member Century 21 Commission, Budget Director of King County Commissioners - District No. 2. Member of the Elks, Eagles, Washington Athletic Club and Swedish Club. He is married.



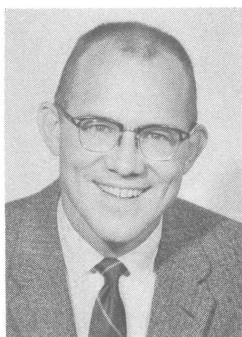
PENCE, STANLEY (Republican) Representative from the 14th District of Yakima County. Serving his second term. Born in Iowa in 1896. High school graduate and is a farmer and manager of Yakima Dairymen's Assn. Served in the First World War and member of the American Legion. He is married.

Representatives



PERRY, ROBERT A. (Democrat) Representative from the 45th District of King County. He will be serving his second term. Born in New York in 1921. High School graduate also U.S.M.S. School of Engineering. He is Business Representative for local #46, I.B.E.W. Merchant Marine Engineering Officer in World War II and the Korean conflict. He is married and has three daughters.

POFF, DICK (Democrat) Representative from the 47th District of King County will be serving his first term. He was born in Omaha, Nebr. in 1934. Attended U. of W. for three years majoring in Political Science. Is in real estate and public relations work. Belongs to the Renton Eagles. He is unmarried.



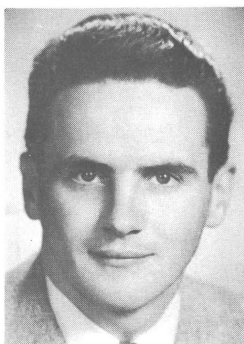
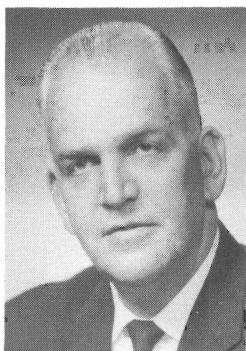
PRITCHARD, JOEL McFEE (Republican) Representative from the 36th District of King County will be serving his second term. Born in Seattle in 1925. High school graduate and attended Marietta College in Ohio. Is Vice President of Griffin Envelope Company. During World War II he served in the infantry. Belongs to the Kiwanis Club. Married and has four children.

RICKDALL, RALPH L. (Republican) Representative from the 40th District of San Juan and Skagit Counties will be serving his third term. Born in Burlington in 1911. Graduate from the School of Law with LL.B. Degree from the National U. Washington, D.C. He is a businessman has investments and farm. Belongs to the Elks and Moose. He is married and has two sons.



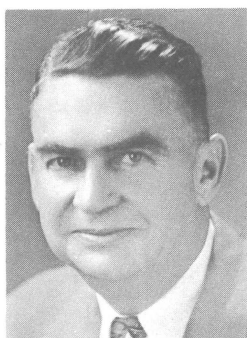
Representatives

RITNER, ROY R. (Democrat) Representative from the 24th District comprising Clallam, Mason and Jefferson Counties. This will be his second term. Born in Montesano in 1911. High school graduate and is a real estate broker. In National Guard Reserve. Member of the Elks. Married and has three children.



SAWYER, LEONARD A. (Democrat) Representative from the 25th District of Pierce County will be serving his fourth term. Born in Puyallup in 1925. Has a B.S. from University of Puget Sound and LL.B. Degree from U. of W. and is an attorney. Formerly served as Deputy Prosecuting Attorney of Pierce Co. He is a navy veteran. Belongs to Elks, American Legion and VFW. Married and has four daughters.

SCHAEFER, ROBERT M. (Democrat) Representative from the 49th District of Clark County will be serving his second term. Born in Seattle in 1930. Graduate of Clark College, Willamette University and Willamette Law School. He is in private practice. Served in the Army for two years. Member of Phi Delta Phi and Phi Delta Theta Fraternities. He is married and has a son.



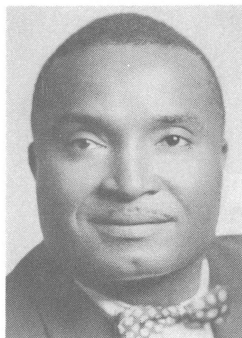
SHROPSHIRE, LINCOLN E. (Republican) Representative from the 14th District of Yakima County will be serving his fifth term. Born in South Bend, Wash. in 1900. Graduated from Washington State University and University of Idaho Law School. He is an attorney. Veteran of World War I. Belongs to Masonic Lodge, Scottish Rite, Afifi Temple, Yakima Kiwanis, Eagles, Elks and Phi Alpha Delta law fraternity. Married and has one son.

Representatives



SILER, HARRY A. (Republican) Representative from the 20th District of Lewis County. Legislative Experience-1950-51-53-55-57-59. Born in Winlock in 1898. Graduated from the Washington State University. He is engaged in farming. Veteran of World War I. Belongs to the Grange. Married and has one son.

SMITH, SAMUEL J. (Democrat) Representative from the 37th District of King County will be serving his second term. Born near Gibsland, La. in 1922. He is a graduate of Seattle U. with a Bachelor of Social Science Degree and the U. of W. with a B.A. in Economics. Is employed by Boeing Airplane Company. Warrant Officer during World War II. Belongs to VFW and Phi Beta Sigma fraternity. Married and has five children.



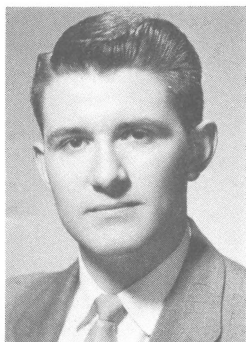
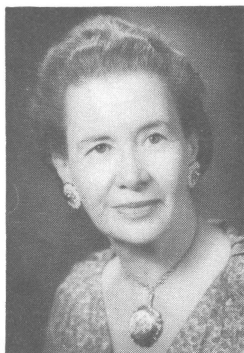
SWAYZE, MRS. THOMAS A. (FRANCES) (Republican) Representative from the 26th District of Pierce County will be serving her fifth term. Born in Council Bluffs, Iowa. She is a graduate of the University of Puget Sound with a B.A. Degree and is now employed as an Admissions Counsellor for the University. Belongs to Pi Beta Phi social sorority and PEO Sisterhood. She is married and has five children.

TAYLOR, DICK (Democrat) Representative from the 38th District of Island and Snohomish Counties. Serving his first term. Born in Everett in 1918. Attended St. Martin's and Everett High School and graduated from Stanford U. in 1941. He is self employed. Member of the Everett Elks #479. He is married and has three children.



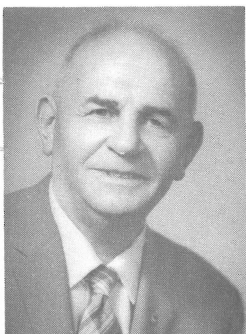
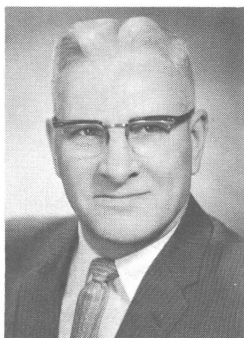
Representatives

TESTU, JEANETTE (Democrat) Representative from the 34th District of King County. Served in the House in 1943-44-49-50-51-53-55-57-59. She was born in Pierre, So. Dakota and is a Normal College graduate. Will be serving as Speaker Pro-Tem of the 1961 Session. Belongs to Am. Leg. Aux., Eagles, Elks, BPW, YMCA and other numerous organizations. Married and has three children.



UHLMAN, WES C. (Democrat) Representative from the 32nd District of King County will be serving his second term. Born in Cashmere in 1935. Attended Seattle Pacific College and graduated from the U. of W. with B.A. in Political Science and from the U. of W. Law School in 1959. He is a practicing attorney. Served in National Guard. Belongs to Pi Sigma Alpha, Phi Alpha Delta and Theta Delta Chi fraternities. Married and has a son.

WANG, ARNOLD S. (Republican) Representative from the 23rd District of Kitsap County. Will be serving his fifth term. Born in Chicago in 1900. High school graduate and has taken extension courses in real estate law and general procedure in real estate business. Is in real estate and investment business. Member of Eagles, Elks, Son's of Norway, Lions, Chamber of Commerce and Washington Athletic Club. Married and has three children.



WEDEKIND, MAX (Democrat) Representative from the 34th District of King County. Served in 1945-47-49-50-51-53-55-57-59 so this will be his ninth term. Born in San Francisco, Calif. in 1899. He attended California School of Mechanical Arts and Mission College. He is a labor representative. Member of Eagles, Moose and Odd Fellows. Married and has one daughter.

Representatives



WILLIAMS, WALTER B. (Republican)
Representative from the 45th
District of King County. Newly
elected member of the House.
Born in Seattle in 1921. Graduate
of U. of W. with B.A. and also
received an LL.B. from Harvard
Law School. He is a lawyer.
Served in the U.S. Marine Corps
during World War II. Is married
and has four children.

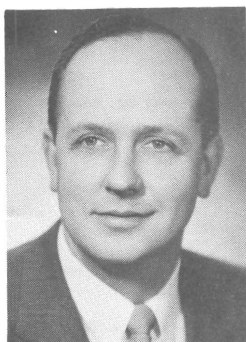
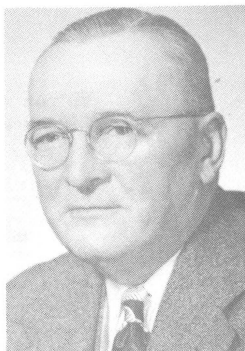
WINTLER, MISS ELLA (Republican)
Representative from the 49th
District of Clark County. Served
in 1939-43-44-47-51-53-55-57-59.
Born in Vancouver, Washington.
She is a graduate of the Univer-
sity of Washington with A.B. and
A.M. Degree. She is a retired
school teacher.



WITHERBEE, C. G. (Democrat)
Representative from the 31st
District of King County. He was
appointed in June, 1958 to succeed
Ed Munro and served in 1959 and
59 Extra Session. Born in
Frazer, Montana in 1922. He has
a high school education and is
business representative for
Aeronautical Industrial District
Lodge No. 751, International
Association of Machinists, AFL-
CIO. Belongs to the Moose Lodge.
Married and has six children.

Representatives

HOLCOMB, S. R. "SI" (Democrat) Chief Clerk of the House of Representatives from the 48th District of King County. He has served as Chief Clerk for twenty-seven years. Born in Ritzville in 1895. He is a high school graduate and attended the University of Washington for two years. Is a real estate broker. Served two years during World War I. Belongs to Elks and has been a Past Commander of the American Legion. Married and has three children.



HYPPA, ELMER A. (Sergeant-at-Arms) (Democrat) from the 25th District of Pierce County served two regular and two special sessions in the House. He will be serving his second time as Sergeant-at-Arms of the House of Representatives. Born in Wilkeson in 1919. He is a high school graduate and is a dairy farmer. Served three years with the Seabees in South Pacific during World War II. Belongs to Masons, Grange, Elks, VFW and is Wash. State Vice-Pres. of the Fraternal Order of Eagles. Married and has three sons.



VICTOR A. MEYERS, Secretary of State
Chief Election Officer, State of Washington

ROSTER OF MEMBERS
STATE OF WASHINGTON LEGISLATURE
GROUPED AS TO DISTRICTS REPRESENTED

DIST.NO.	COUNTIES	STATE SENATORS	STATE REPRESENTATIVES
1	Douglas, Okanogan	Hallauer (D)	Bozarth (D), Goldmark (D)
2	Pend Oreille, Stevens	McMillan (D)	Avey (D), McElroy (D)
3	Spokane, part	Keefe (D)	Hurley (D), May (D)
4	Spokane, part	Herrmann (D)	Epton (D), Day (D)
5	Spokane, part	Cooney (D)	Campbell (D), McCormick, W. L. (D)
6	Spokane, part	Happy (R)	Adams (R), Johnston (R)
7	Spokane, part	Cowen (D)	Harris (R), Morphis (R)
8	Adams, Ferry, Lincoln	Raugust (R)	Moos (R)
9	Whitman	Neill (R)	Goldsworthy (R), Huntley (R)
10	Asotin, Columbia, Garfield	Donohue (D)	Lybecker (R)
11	Walla Walla	Freise (R)	Ahlquist (R), Copeland (R)
12	Chelan	Hanna (D)	Braun (D), McDougall (R)
13	Grant, Kittitas	Washington (D)	Holmes (D), Flanagan (R)
14	Yakima, part	Foster (R)	Shropshire (R), Morrissey (R), Pence (R)
15	Yakima, part	Woodall (R)	Canfield (R), Clark (R)
16	Benton, Franklin	McCormack (D)	Cecil (D), Leibold (D)
17	(Clark, part, Klickitat, Skamania)	Henry, Al (D)	Henry, Mildred (D)
18	Cowlitz, Wahklakum	Talley (D)	Marsh (D), DeJarnatt (D)
19	Grays Harbor, part, Pacific	Bailey (D)	King (D)
20	Lewis	Chytil (R)	Siler (R), Folsom (R)
21	(Grays Harbor, except 19 precincts)	Elway (R)	Anderson, Eric (D), Burtch (D)
22	Thurston	DeGarmo (D)	Farrington (D), Lewis (R)
23	Kitsap	Morgan (D)	Nicholson (D), Beck (D), Wang (R)
24	Clallam, Jefferson, Mason	Sandison (D)	Conner, Paul (D), McFadden (D), Ritner (D)
25	Pierce, part	Knoblauch (D)	Brouillet (D), Sawyer (D)
26	Pierce, part	Petrich (D)	Swayze (R), Comfort (R)
27	Pierce, part	Kupka (D)	Burns (D), Gleason (D)
28	Pierce, part	Rasmussen (D)	O'Connell (D), Gallagher, P. J. (D)
29	Pierce, part	McCutcheon (D)	Jueling (R), Newschwander (R)
30	King, part	Hofmeister (D)	Beierlein (D), Bigley (D)
31	King, part	Hess (D)	Ackley (D), Meyers (D), Witherbee (D)
32	King, part	Angevine (D)	Uhlman (D), England (R)
33	King, part	Connor (D)	O'Brien (D), Chatalas (D)
34	King, part	Greive (D)	Testu (D), Wedekind (D)
35	King, part	Riley (D)	Olsen (D), Brink (D)
36	King, part	Moriarty (R)	Pritchard (R), Kirk (R)
37	King, part	Dore (D)	O'Donnell (D), Smith (D)
38	Island, part; Snohomish, part	Bargreen (D)	Hardesich (D), Taylor (D), Metcalf (R)
39	Island, part; Snohomish, part	Gissberg (D)	Backstrom (D), Bernethy (D)
40	San Juan, Skagit	Martin (D)	Eldridge (R), Rickdall (R)
41	Whatcom, part	Lennart (R)	Hood (R)
42	Whatcom, part	Nunamaker (D)	Edwards (D), Kink (D)
43	King, part	Shannon (R)	Evans (R), Williams (R)
44	King, part	Papajani (D)	Bergh (D), Hawley (R)
45	King, part	Gallagher (D)	Litchman (D), Perry (D)
46	King, part	Ryder (R)	Gorton (R), Mahaffey (R)
47	King, part	Durkan (D)	Garrett (D), Poff (D)
48	King, part	Thompson (R)	Andersen, James (R), Leland (R)
49	Clark, part	Foley (D)	Schaefer (D), Klein (D), Wintler (R)

Summary

SENATE	MEMBERS	HOUSE	MEMBERS
Democrats	36	Democrats	59
Republicans	13	Republicans	40
Total	49	Total	99

~ THE PRESS ~

BARRETT, ELDON, United Press Intl.
BURT, LYLE, Associated Press
CUMMINGS, ROBERT C., Associated Press -
Radio KGY
CUNNINGHAM, ROSS, Seattle Times
FISCHER, JACK, Spokane Spokesman Review
FORTNEY, CURT, King-TV
GUTHMAN, ED, Seattle Times
HERRING, CHARLES, King-TV
HITTLE, LEROY M., Associated Press
HUNT, MARSHALL A., Daily Olympian
JOHNS, CHARLES, Tacoma News-Tribune
JOHNSRUD, BYRON, Seattle Times
KOMER, JOHN, Associated Press
LAWRENCE, RICHARD S., Daily Olympian
LEMON, JOHN J., Spokane Chronicle
McGINN, ARTHUR, United Press Intl.
MOTT, ROBERT L., United Press Intl.
MURPHY, RONALD A., Wash. State-Radio-TV -
News Bureau
NELSON, STUB, Seattle Post-Intelligencer
OLSEN, TOM, Radio KGY, Wash. State Radio-
TV News Bureau
PYLE, JACK, Tacoma News Tribune
RIGERT, JOSEPH, Associated Press
ROBINSON, HERB., KOMO-TV
SHIERER, ED, KOMO-TV
SHULMAN, ROBERT, KING-TV
WHITMAN, DON, Radio KITN

~ ~ ~ ~ ~

ASSOCIATED PRESS ~ Senate Gallery Phone 767
UNITED PRESS INTL. ~ House Gallery Phone 470
WASHINGTON STATE RADIO-TV NEWS BUREAU ~
First Floor Phone 769

~ ~ ~