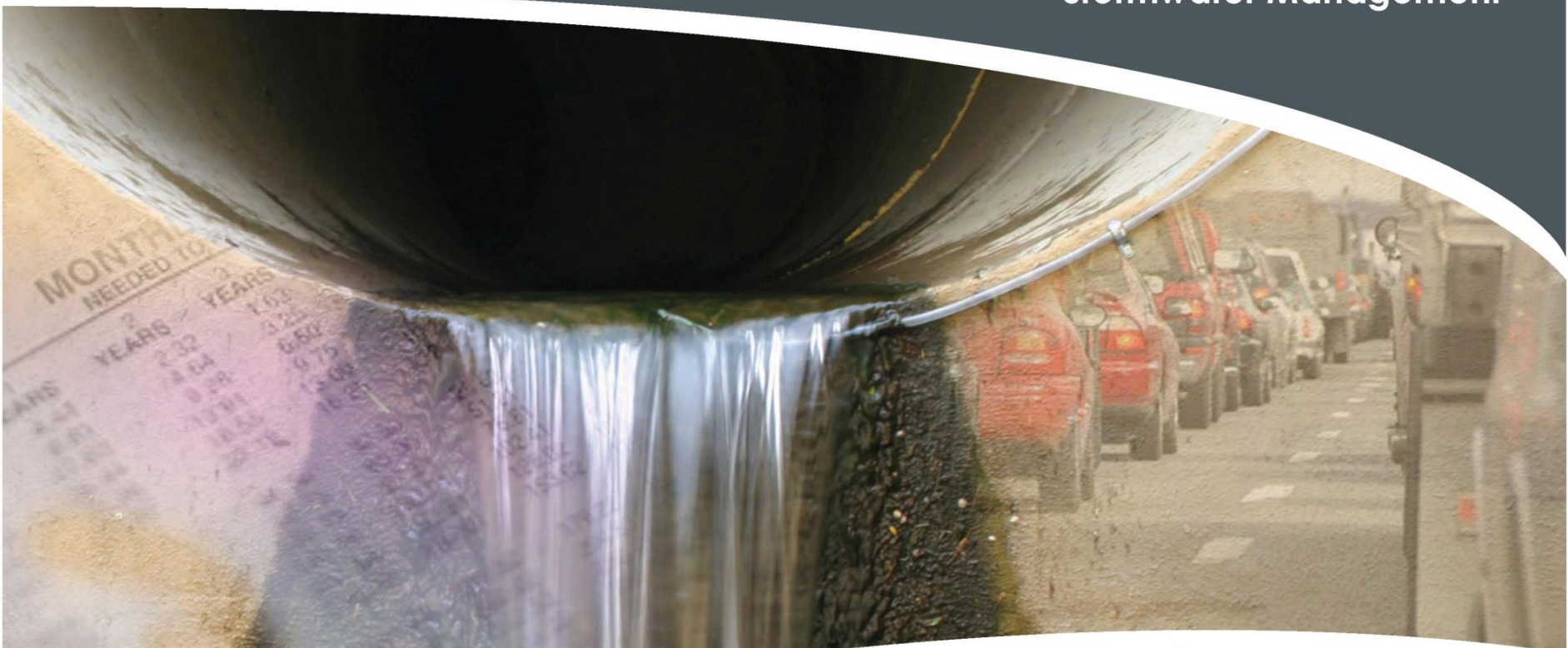


State of Washington

Joint Transportation Committee

Cost Recovery Structure for Cities & Efficiencies in Stormwater Management



 **FCS GROUP**

IN PARTNERSHIP WITH:
Parametrix
PRR, Inc.
Foster Pepper PLLC

Joint Transportation Committee

July 13, 2011

Cost Recovery Structure for Cities & Efficiencies in Stormwater Management

FCS Group In partnership with

- Parametrix
- PRR, Inc.
- Foster Pepper PLLC

Cost Recovery Structure for Cities & Efficiencies in Stormwater Management

-Study Objectives-

- Improve WSDOT reimbursement process for municipalities managing stormwater runoff from state highways
- Improve efficiency of coordination between WSDOT and municipalities for common stormwater management activities associated with state highways

Management Approach

FCS GROUP



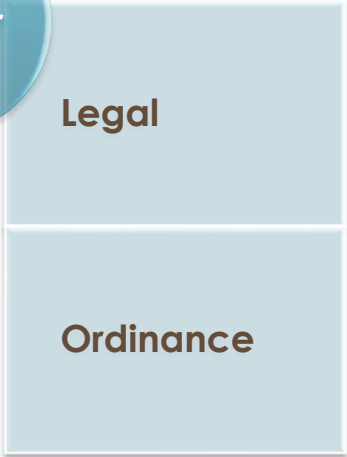
Parametrix



PRR, Inc

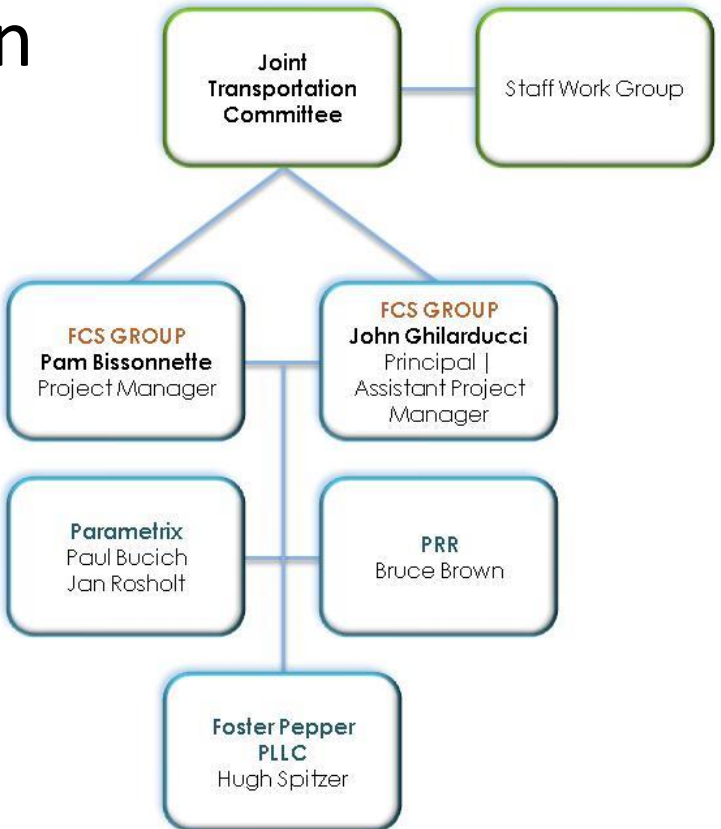


Foster Pepper PLLC



Cost Recovery Structure for Cities & Efficiencies in Stormwater Management

Organization Structure



Task Plan: Overview & Inventory

1. Overview of Stormwater Regulations and Fee Structures

[Pam /
John G.]

- Research stormwater regulations and current stormwater management cost recovery practices in both the State and the country.
- Develop a “Stormwater 101” guide

2. State Highway Inventory (subject to the Clean Water Act)

[Paul]

- Compile a list of applicable State highways within municipalities

Task Plan: Survey & Case Studies

3. Survey of Municipalities Managing State Highway Runoff

- Perform a survey of at least 30 municipalities for input on improving recovery of costs of managing stormwater runoff from State highways
- Summarize survey results in a white paper

[Bruce]

4. Case Studies of Municipalities

- Research and write up to 7 case studies from a representative cross-section of municipalities
- Illustrate obstacles and successes interacting with WSDOT to recover costs of managing State highway stormwater runoff

[FCS /
Paul]

Task Plan: Ordinance & Efficiencies

5. Model Stormwater Fee Ordinance for Municipalities

- Incorporate results of the survey and case studies into a “model ordinance” for municipal stormwater fees
- Address potential solution(s) to cost recovery from WSDOT, for example
 - Standardized rate schedule for WSDOT facilities

[John G. /
Hugh]

6. Efficiencies in Cost / Management of State Highway Stormwater Runoff in Municipalities

- Incorporate results of the survey and case studies into recommendations on improvements to coordination between WSDOT and municipalities within regulatory constraints, for example
 - Shared operations
- Meet with impacted parties; summarize recommendations in a white paper

[Paul /
Pam]

Task Plan: Statute & Documentation

7. Recommended Amendments to RCW 90.03.525

- [Hugh / Pam] • Incorporate results of all previous tasks to recommend amendments to RCW 90.03.525 that improve the effectiveness of the stormwater cost reimbursement process

8. Draft, Final Reports and Presentations

- [All] • Write draft and final reports
- [All] • Present to
 - JTC (July, January)
 - Washington Association of Counties (November)
 - Legislative Committees (January)

Cost Recovery Structure for Cities & Efficiencies in Stormwater Management

Questions?