

# State of Washington



**Elmer C. Huntley**  
*Adm. Lincoln Whitman*

**Hubert F. Donohue**  
*Ashe, Okanogan, Skagit, Walla Walla*

**Dan Jolly**  
*Seaton, part Franklin*

**Bob McDougall**  
*Chelan, Douglas*

**Gordon Sandison**  
*Gallatin, Mason, Jefferson*

**Frank W. Foley**  
*Clark, part*

**Al Henry**  
*Clark, Klickitat, Skamania*

**Don L. Talley**  
*Cowlitz, Wahkiakum*

**Bruce A. Wilson**  
*Ferry, Skagit, Stevens, and Snohomish*

**Nat Washington**  
*Grant, Kittitas*

**Charles W. Elicker**  
*Island, Kitsap, part*

**Martin J. Durkan**  
*King, part*



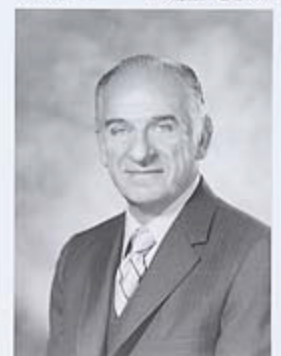
**R.R. (Bob) Greive**  
*King, part*

**Frank Connor**  
*King, part*

**George W. Clarke**  
*King, part*

**George W. Scott**  
*King, part*

**Pete Francis**  
*King, part*



**John A. Cherberg**  
*PRESIDENT*



**Francis E. Holman**  
*King, part*

**Gordon Herr**  
*King, part*

**George Fleming**  
*King, part*

**Robert C. Ridder**  
*King, part*

**John S. Murray**  
*King, part*



**Ted G. Peterson**  
*King, part*

**John H. Stender**  
*King, part*

**Jonathan Whetzel**  
*King, part*

**Fred H. Dore**  
*King, part*

**James A. Andersen**  
*King, part, Snohomish*



**Gordon L. Walgren**  
*Kitsap, part*

**Gary M. Odegaard**  
*Lewis, Grays Harbor, part*

**Robert C. Bailey**  
*Island, Lewis, Thurston, part*

**Booth Gardner**  
*Pierce, part*

**John T. McCutcheon**  
*Pierce, part*



**Joe Stortini**  
*Pierce, part*

**Reuben A. Knoblsack**  
*Pierce, part*

**Charles Neuschwander**  
*Pierce, part*

**Lowell Peterson**  
*San Juan, Skagit*

**William A. Gissberg**  
*Snohomish, part*



**August P. Mardesich**  
*Snohomish, part*

**Jack Metcalf**  
*Snohomish, part*

**Sam C. Guess**  
*Spokane, part*

**James E. Keefe**  
*Spokane, part*

**Robert W. Twigg**  
*Spokane, part*

**William S. Day**  
*Spokane, part*

**John L. Cooney**  
*Spokane, part*

19



**Charlie Johnson**  
*Sgt. at Arms*

**Harry B. Lewis**  
*Thurston*

**R. Frank Atwood**  
*Whatcom*

**Jim Matson**  
*Yakima, part*

**Perry E. Woodall**  
*Yakima, part*

**Damon R. Canfield**  
*Yakima, part, Benton, part*

**Sidney R. Snyder**  
*Secretary*

71

# Senate