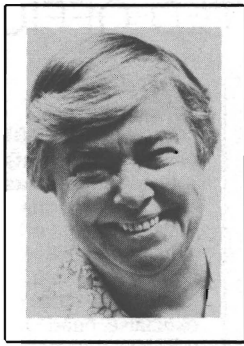


45th  
SESSION  
1977-79

THE  
WASHINGTON  
STATE  
LEGISLATURE

PICTORIAL DIRECTORY



## Dixy Lee Ray Governor

Inaugurated January 12, 1977

Dixy Lee Ray, 17th governor of Washington State, is also the first woman to be elected to that office.

Born in Tacoma on September 3, 1914, she attended grade school and high school there, then went to Mills College in Oakland for a Bachelor of Arts degree in 1937 and a Master of Arts in 1938. She earned her doctorate in biology in 1945 at Stanford University.

Dr. Ray was a high school teacher in Oakland from 1938 to 1942. She spent years on the faculty of the University of Washington, teaching marine invertebrate zoology, conducting research, and supervising graduate students.

The recipient of 19 honorary degrees from American universities and colleges, Dr. Ray has been active in numerous scientific endeavors in her long career. From 1945 to 1960 she was a member of the Executive Committee of the University of Washington's Friday Harbor Laboratories. During the next two years she served as special consultant in biological oceanography to the National Science Foundation.

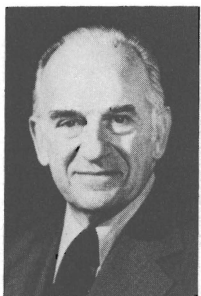
In 1963 Dr. Ray was named the first director of the Pacific Science Center in Seattle, a position she held until she was appointed nearly ten years later to the United States Atomic Energy Commission. Six months later the President named her chairman of the AEC.

When Congress reorganized the AEC and split it into two agencies, President Ford asked her to take a position as assistant secretary of state to direct and organize the newly created State Department Bureau of Oceans and International Environmental and Scientific Affairs. She held the position from January to June, 1975, resigning after the new bureau had been organized.

Dr. Ray, whose home is on Fox Island, Washington, has received many national, international, and local civic awards. They include a Guggenheim Fellowship, membership in the Danish Royal Society for Natural History, Phi Beta Kappa and Sigma Xi, the Florence K. Hutchinson Medal for Service in Conservation, Seattle's First Citizen Award, the Ladies' Home Journal Woman of the Year Award, and the College Scientists' Foundation's Outstanding Woman of Science Award.

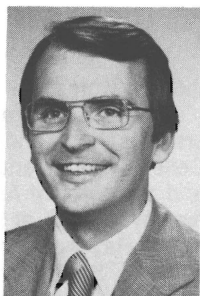


# ELECTED OFFICIALS



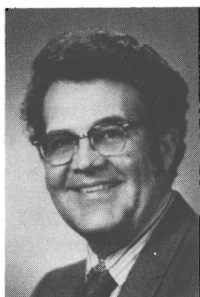
**JOHN A. CHERBERG, Lieutenant Governor. (Democrat)** Presently serving his sixth term. Serves as President of the Senate, ex-officio chairman of Senate Rules Committee, member of State Finance Committee, Capitol Committee, Washington State Patrol Retirement Board, and Chairman of the Data Processing Authority. Formerly, television executive, head football coach, U. of W., and a Seattle high school teacher.

**BRUCE K. CHAPMAN, Secretary of State. (Republican)** Former Seattle City Councilman; appointed Secretary of State, 1975; elected, 1975; re-elected 1976. Major areas of interest: ethical reform, constitutional revision, cost-cutting and efficiency in government, and greater voter participation in the election process. Recently appointed to President's Advisory Council on Historic Preservation.



**ROBERT S. O'BRIEN, State Treasurer. (Democrat)** Native of Washington, elected to four consecutive four-year terms as Grant County Treasurer, prior to being elected four times State Treasurer. Recently elected President of National Association of State Auditors, Comptrollers and Treasurers.

**ROBERT V. GRAHAM (BOB), State Auditor. (Democrat)** Is a native Washingtonian and became the State's seventh auditor in 1965, currently serving his fourth term. He is a member and chairman of the National Council on Governmental Accounting. He and his wife, Lloydine, have five children.



# ELECTED OFFICIALS

**SLADE GORTON, Attorney General. (Republican)** Has held this office since 1969; Chairman, Law and Justice Committee and Criminal Justice Training Commission. Previously served five terms in House of Representatives, one term as majority leader. Active in professional and community groups, and Episcopal Church. He and his wife Sally, have three children.



**DR. FRANK B. BROUILLET, Superintendent of Public Instruction. (Non-partisan Office)** Serving his second term. Began his career as Representative from the 25th District. He served eight consecutive terms from 1957 to 1972.

**BERT L. COLE, Commissioner of Public Lands. (Democrat)** Serving his sixth term. He administers the Department of Natural Resources, which manages nearly 5 million acres of forest, agricultural and aquatic lands. Born and raised in Western Washington, graduated from Ferndale High School and U. of W. Served in Army Signal Corps. Before election to statewide office was an educator, banker, logger, city councilman and county commissioner. He and his wife, Norma, live in Olympia.



**RICHARD G. (DICK) MARQUARDT, Insurance Commissioner. (Republican)** Raised in Western Washington, former Washington State Senator. Executive in private enterprise and public life. Beth and Dick Marquardt reside in Seattle.

# TABLE OF CONTENTS

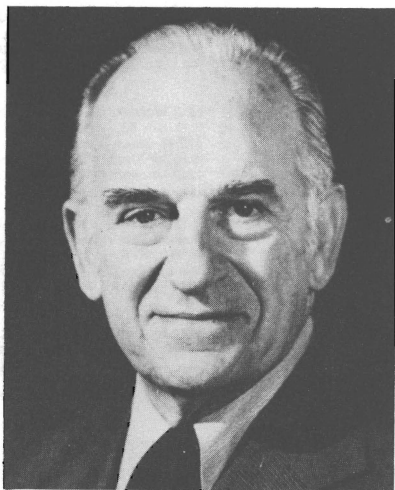
State Elected Officials .....	1
Introduction .....	4
President of Senate .....	5
Senate Roster .....	6
Senate Biographies .....	7
Speaker of House .....	21
House of Representatives Roster .....	22
House of Representatives Biographies .....	24

## INTRODUCTION

This "45th Session Pictorial Directory of the Washington State Legislature" contains pictures of and biographical material on state elected officials and members of the Senate and House of Representatives. This Directory is prepared by the Senate and the House of Representatives to assist those interested in becoming better acquainted with their legislators and the legislative processes in our state.

These are the men and women who have been elected to serve the people both as the heads of our government and as our voice in providing our state with laws which benefit all.

# SENATORS OF THE STATE OF WASHINGTON



**JOHN A. CHERBERG**  
**Lieutenant Governor**  
**President of the Senate**

John Andrew Cherberg (Democrat) is serving his eleventh session as President of the Senate and Ex-Officio Chairman of the Senate Rules Committee. He was first elected Lieutenant Governor in 1956, and reelected in 1960, 1964, 1968, 1972 and 1976. Born in 1910 in Pensacola, Florida, he earned a life teaching diploma from the University of Washington in 1934. Formerly a teacher, he was head football coach at the University of Washington prior to his election. He and his wife, Betty, have three children.

# ROSTER OF MEMBERS

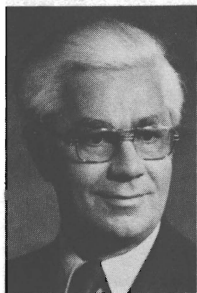
## WASHINGTON STATE SENATE

49 Members--  
30 Democrats, 19 Republicans

NAME	PARTY	DIST.	ADDRESS
BAILEY, Robert C.	D	✓ 19	P. O. Box 146, South Bend, 98586
BAUSCH, Del	D	✗ 22	Route 3, Box 845, Olympia, 98506
BECK, C. W. "Red"	D	✓ 26	1263 Beach Dr. E., Port Orchard, 98366
BENITZ, Max E.	R	8	Route 2, Box 181, Prosser, 99350
BLUECHEL, Alan	R	45	9901 N.E. 124th St., #505, Kirkland, 98033
BOTTIGER, R. Ted	D	2	8849 Pacific Avenue, Tacoma, 98444
BUFFINGTON, Nancy	R	34	5919 47th S.W., Seattle, 98136
CLARKE, George W.	R	✓ 41	1111 Hoge Building, Seattle, 98104
CUNNINGHAM, John E. (Jack)	R	33	P. O. Drawer 89307, Seattle, 98188
DAY, William S.	D	4	2721 E. Sprague, Spokane, 99202
DONOHUE, Hubert F.	D	9	Route 2, Box 13, Dayton, 99328
FLEMING, George	D	37	1100 Lake Washington Blvd. So., Seattle, 98144
FRANCIS, Pete	D	32	7310 E. Green Lake Drive North, Seattle, 98115
GASPARD, Marcus S.	D	25	8220 191st Ave. E., Sumner, 98390
GOLTZ, H. A. "Barney"	D	42	3003 Vallette Street, Bellingham, 98225
GOULD, Susan E.	R	21	19225 92nd W., Edmonds, 98020
GRANT, Gary	D	11	25823 - 132nd S.E., Kent, 98031
GUESS, Sam C.	R	✓ 6	W. 408 33rd Avenue, Spokane, 99203
HAYNER, Jeannette	R	16	830 East Chestnut, Walla Walla, 99362
HENRY, Al	D	17	Rio Vista, White Salmon, 98672
HERR, Gordon	D	✓ 31	1818 Westlake N., Suite 112, Seattle, 98109
JONES, John D.	R	48	P. O. Box 867, Bellevue, 98009
KEEFE, James E.	D	✓ 3	412 W. Glass, Spokane, 99205
LEWIS, R. H. (Bob)	R	5	W. 4329 Arrowhead Road, Spokane, 99208
MARDESICH, August P.	D	✓ 38	4712 Mermont Drive, Everett, 98203
MARSH, Dan	D	✓ 49	P. O. Box 1086, Vancouver, 98660
MATSON, Jim	R	✓ 14	Route 2, Box 2311, Selah, 98942
McDERMOTT, James A.	D	43	1650 22nd Ave. E., Seattle, 98112
MORRISON, Sid W.	R	15	Route 1, Box 220 AA, Zillah, 98953
MURRAY, John S.	R	36	2312 - 3rd Ave., Seattle, 98121
NEWSCHWANDER, Charles E.	R	✓ 28	2140 Bridgeport Way, Tacoma, 98466
NORTH, Lois	R	44	10126 Radford Ave. N.W., Seattle, 98177
ODEGAARD, Gary M.	D	20	3415 Ives Road, Centralia, 98531
PETERSON, Lowell	D	40	Box 249, Concrete, 98237
PULLEN, Kent	R	47	22844 172nd Ave. S.E., Kent, 98031
RASMUSSEN, A. L. "Slim"	D	29	5415 A Street, Tacoma, 98408
RIDDER, Ruthe	D	35	5809 S. Roxbury, Seattle, 98118
SANDISON, Gordon	D	24	P. O. Box 2025, Port Angeles, 98362
SCOTT, George W.	R	46	2530 N.E. 105th Place, Seattle, 98125
SELLAR, George L.	R	✓ 12	1324 Terrace Drive, East Wenatchee, 98801
TALLEY, Don L.	D	✓ 18	1583 Mt. Pleasant Road, Kelso, 98626
VAN HOLLEBEKE, Ray	D	1	18735 - 53rd N.E., Seattle, 98155
von REICHBAUER, Peter	D	30	427 Public Lands Bldg., Olympia, 98504
WALGREN, Gordon L.	D	23	245 Fourth Street Bldg., Bremerton, 98310
WANAMAKER, F. "Pat"	R	10	519 West Wanamaker Road, Coupeville, 98239
WASHINGTON, Nat W	D	13	42 "C" Street N.W., Ephrata, 98823
WILSON, Bruce A.	D	7	P. O. Box F, Omak, 98841
WOJAHN, Lorraine	D	27	3592 East K St., Tacoma, 98404
WOODY, Frank J.	D	39	24228 - 47th, Woodinville, 98072

# SENATORS

**BAILEY, ROBERT C. (BOB) (Democrat), Majority Caucus Chairman.** Senator from the 19th District comprising part of Pacific, and all of Grays Harbor County, served three sessions in the House. Elected to Senate in 1956. Born in 1918 in Raymond. Printer by trade. From 1966-74, served as West. Admin. Asst. to Congresswoman Julia Butler Hansen. Served in the Navy during WW II. Member, Eagles, VFW, Am. Legion, So. Bend Kiwanis, Masons, Boy Scout Council, Episcopal Church. He and his wife, Lee, have one grown son.



**BAUSCH, DEL (Democrat),** Senator from the 22nd District, Thurston County, is serving his first session in the Senate and has served two terms in the House of Representatives. Born in 1935 in Olympia. He is a safety engineer for Seattle Stevedore Company. Attended Clark College. He and his wife, Nancy, have three sons.

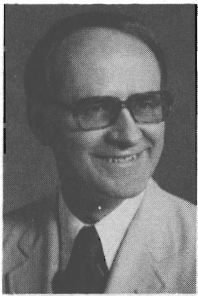
**BECK, C.W. "RED" (Democrat)** Senator from the 26th District comprising parts of Kitsap and Pierce Counties. Appointed Feb. 1974 for the unexpired term, elected Nov. 1974 for a four-year term in the Senate. Served seven terms in the House. Born in 1908 in Bloomington, Ind. Attended Stanford University, and is self-employed as a property manager. Served in the Navy and is a retired Naval Ordnance Engineer. Member, Sons of Norway, Elks, Eagles, Grange, Kiwanis, D.A.V.'s, Fleet Reserve Assn. and So. Kitsap Chamber of Commerce. His wife's name is Hope Grace.



**BENITZ, MAX E. (Republican)** Senator from District 8 of Benton and Yakima Counties, is serving his second session in the Senate and has served three sessions in the House of Representatives. Born in Wathena, Kansas. He is self-employed in agri-business. Past-president of the Washington State Farm Bureau Federation; past school board member, and former member of the board of directors of the Benton-Franklin County Fair. He and his wife, Marie, have five children.

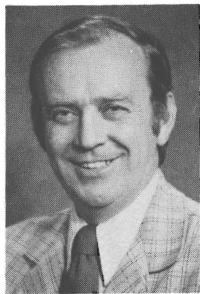


# SENATORS



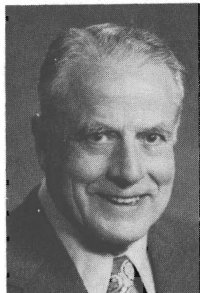
**BLUECHEL, ALAN (Republican)** Senator from the 45th District of King County, is serving his second session in the Senate and has served four terms in the House of Representatives. Born in 1924 in Edmonton, Alberta, Canada. Received a B.A.Sc. in electrical engineering, and a B.A. in General Studies from the University of British Columbia. Vice Chairman, Washington Land Planning Commission; World's Fair Commission-Expo '70, Osaka, Japan. He is president of Loctwall Corporation.

**BOTTIGER, R. TED (Democrat)** Senator from the 2nd District comprising part of Pierce and Thurston Counties, is serving his third session in the Senate and has served four terms in the House of Representatives. Born in 1932 in Tacoma. Graduate from University of Puget Sound with a B.A. degree and the University of Washington Law School. He is an attorney practicing in Tacoma. He and his wife, Darlene, have three children.



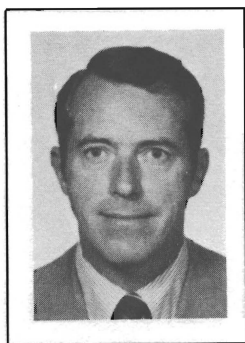
**BUFFINGTON, NANCY (Republican)** Senator from the 34th District of King County, serving her first term in the Senate. Educated at the U of W in Cardiac Rehabilitation, is an Emergency Medical Technician. Was Program Director for Cardio-Pulmonary Research Inst., Board member: W. Seattle YMCA, Senior Citizens, COPA (United Way), Region IV Soc. & Health Community Health Assn. Member: BPW Council on Aging, Municipal League, West. Conf. St. Gov't. Law and Justice, Nat'l. Conf. St. Legislatures. Presently employed in public affairs, Wash. Natural Gas Co. She has four teenagers.

**CLARKE, GEORGE W. (Republican), Minority Floor Leader.** Senator from the 41st District of King County, served two sessions in the House and is serving his fourth session in the Senate. Born in Perry, Iowa, he is an attorney. Served as a naval officer in World War II. Served 20 years, Mercer Island School Board. Member, Seattle Chamber of Commerce, and Rotary. He has three children.



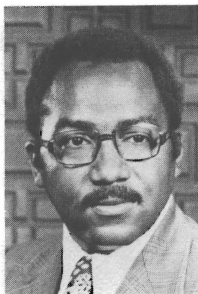
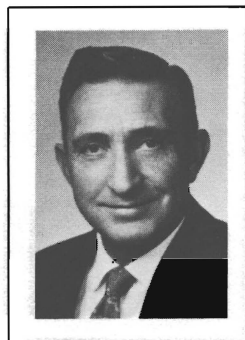
# SENATORS

**CUNNINGHAM, JOHN E. (JACK) (Republican)** Senator from the 33rd District of King County, is serving his first session in the Senate and served one session in the House of Representatives. Born in 1931, raised in the East, educated at the University of San Francisco. Following service with the United States Air Force, he was employed in chemicals and lumber manufacturing. Now involved in farming and investment management.



**DAY, WILLIAM S. (BILL) (Democrat)** Senator from the 4th District comprising part of Spokane and Whitman Counties, served five sessions in the House and is serving his fifth session in the Senate. Speaker of the House in 1963. Born in 1923 in Rockford, Illinois. Graduate, Palmer College of Chiropractic in Davenport, Iowa, is a Chiropractor. Served in the Army during WW II. Member, Rotary, Spokane Interstate Fair Board, Veterans of Foreign Wars. He and his wife, Lucy, have five children.

**DONOHUE, HUBERT F. (Democrat)** Senator from the 9th District comprising Adams, Asotin, Garfield and parts of Columbia, Grant and Whitman Counties. Serving his third term in the Senate. Served as Chairman of Senate Agr. and Hort. Committee and Rev. and Tax. Committee. Presently serving as Chairman of Senate Ways and Means Committee. Born 1921 in Dayton. Attended, W.S.U., is a farmer. Member, Eagles, Elks, Am. Legion, Wash. Wheat Assn., Farm Bureau, Christian Church, Wash. Cattle-men's Assn. He and his wife, Evelyn, have four sons.



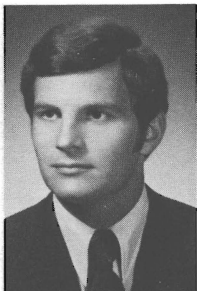
**FLEMING, GEORGE (Democrat), Majority Caucus Vice Chairman.** Senator, 37th District, King County. Served one session in House, serving fourth session in Senate. Born in 1938 in Dallas. Graduate U of W with B.A. in Bus. Adm. 1960 & 1961 member Rose Bowl teams. Econ. Develop. Manager, Pac. NW Bell, Member: St. Urban, Racial, Rural Disadvantaged Com.; United Way Board; Children's Home Society (NW Branch); Center for Urban Studies (W.W.S.C.); Nat'l. Conf. State Legislatures' Executive Committee. He and his wife, Tina, have two daughters, Sonja and Yemi.

# SENATORS



**FRANCIS, PETE (Democrat)** Senator from the 32nd District of King County, served one session in the House, appointed to the Senate in 1969, he is serving his fifth session in the Senate. Born in 1934 in Seattle. Graduate, Stanford University with a B.A. in Political Science and Stanford Law School with a J.D. degree, is an attorney. Past President, Green Lake Chamber of Commerce; Member, Woodland Park Presbyterian Church; member, Municipal League, NOW, Lions, YMCA. He and his wife, Elva, have two sons.

**GASPARD, MARCUS S. (Democrat)** Senator from the 25th District of Pierce and King Counties, is serving his first term in the Senate, served two terms in the House of Representatives where he was assistant majority whip and a member of the Ways and Means (Appropriations), Judiciary and Education committees. Born in 1948 in Tacoma and reared in Puyallup. Graduate, University of Oregon with B.B.A. in Finance, he is an accountant. Marc and his wife, Jo Anne, live in Puyallup.



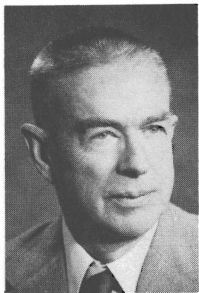
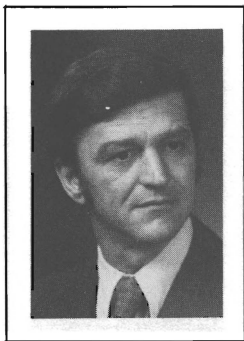
**GOLTZ, H. A. "BARNEY" (Democrat)** Senator from the 42nd District, Whatcom County, is serving his second session in the Senate and has served one term in the House of Representatives. Born in 1924 in Minnesota. Graduate, Macalester College, B.A., and University of Minnesota, M.A., is Director of College Planning at WWSC, Bellingham. He and his wife, Marguerite, have one son.

**GOULD, SUSAN E. (Republican)** Senator from the 21st District of Snohomish County, serving her second session. Born in Seattle, attended Roosevelt High School and Whitman College, graduated from the University of Washington in chemistry. Former research and analytical chemist, past president of Snohomish County League of Women Voters, served two terms on the Edmonds School Board, currently a member of the Gov.'s Comm. on Law & Justice. She and her husband, Ray, have three children.



# SENATORS

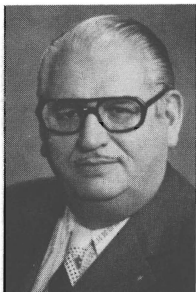
**GRANT, GARY (Democrat)** Senator from the 11th District of King County, is serving his third session. He served five sessions in the House of Representatives. Born in 1934 in Chippewa Falls, Wisconsin. Graduate, St. Martin's College with B.A. President, Public Service Employees Union. Former member, Junior Chamber of Commerce and Toastmasters. He and his wife, Tanya, have four children.



**GUESS, SAM C. (Republican)** Senator from the 6th District of Spokane County, is serving his eighth session. Born in 1909 in Greenwood, Mississippi. Graduate, University of Mississippi with B.S. in Civil Engineering. Served with the First U.S. Army in Europe. Member, Sigma Nu fraternity and Kiwanis Club. He and his wife, Dorothy, have two children.

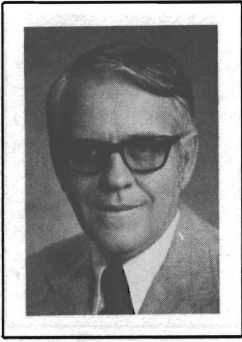
**HAYNER, JEANNETTE C. (Republican)**

Senator from the 16th District comprising Franklin, Walla Walla and Columbia (part). Served two terms in the House of Representatives. She was born in Portland, Oregon. Received B.A. and J.D. from the University of Oregon. She and her husband, Dutch, have three children.



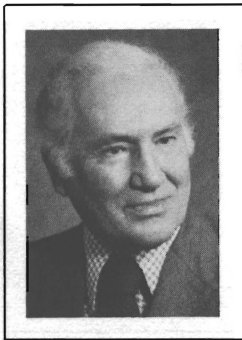
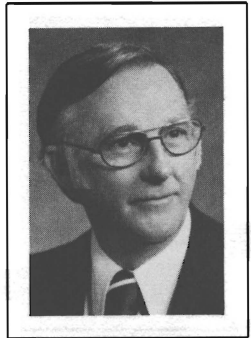
**HENRY, AL (Democrat), President Pro Tem.** Senator from the 17th District comprising Klickitat, Skamania, and part of Clark Counties. Served four sessions in the House and is serving his eleventh session in the Senate. Born in Ness County, Kansas. Attended business school, is a telephone company executive. Served in WW II and National Guard, Past President, Eagles; member, Elks, Grange, Advisory Board of American Security Council. His wife's name is Anne.

# SENATORS



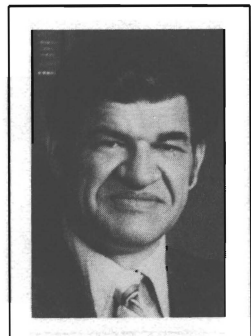
**HERR, GORDON (Democrat)** Senator from the 31st District of King County, served one session in the House and is serving his eighth session in the Senate. Born in 1926 in Seattle. Attended University of Washington, is an association executive. He and his wife, Patricia, have five children.

**JONES, JOHN D. (Republican) Minority Whip**, Senator from the 48th District of King County. Served one session in the House of Representatives, and was appointed to the Senate January 8, 1973, and is serving his third session. Born in 1923 in Wales. Attended Wayne State University, is a manager of Pacific Northwest Bell Telephone. Past President, Bellevue Chamber of Commerce; President, Rotary; Chairman, North King County UGN. He and his wife, Ruth, have two children.



**KEEFE, JAMES E. (Democrat), Dean and Vice President Pro Tem.** Senator from the 3rd District of Spokane County, is serving his fifteenth session in the Senate. Born in 1908 in New York City. Graduate, Gonzaga High School, is employed as a sales manager. Member, Elks, Moose. He and his wife, Eileen, have two sons.

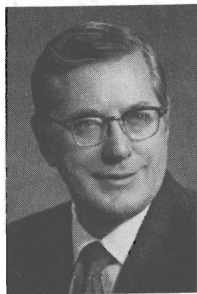
**LEWIS, R. H. (BOB) (Republican), Minority Assistant Floor Leader**, Senator from the 5th District of Spokane County, is serving his third session in the Senate. Born in Deer Park, Washington, in 1925. Graduate of University of Missouri. Vice President, Public Relations Officer, Lincoln Mutual Savings Bank. Spokane City Councilman from 1964-69. Past President, Association of Washington Cities, served as Chairman of Spokane Board of Health, Member, State Urban Affairs Advisory Council and State Municipal Research Council. He and his wife, Peggie, have three children.



# SENATORS

## **MARDESICH, AUGUST P. (Democrat).**

Senator from the 38th District of Snohomish County, served seven sessions in the House and is serving his eighth session in the Senate. Born in 1920 in San Pedro, California. Graduate, University of Washington Law School, is an attorney and commercial fisherman. He and his wife, Rosemary, have six children.

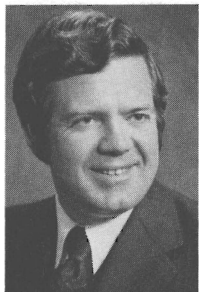


## **MARSH, DAN (Democrat), Assistant Majority Leader.**

Senator from the 49th District of Clark County, is serving his third session in the Senate. Previously served four sessions in the House of Representatives from 1965 to 1973. Born in 1937 in Salem, Ore. Graduate, Willamette Univ. and Univ. of Oregon with B.A. and J.D. degrees, is an attorney. Served in National Guard. Member, Sigma Alpha Epsilon, Tau Kappa Alpha, Kiwanis and Grange; Board member, Clark County Social Services Admin. Board. He and his wife, Diane Kay, have three sons.

## **MATSON, JIM (Republican), Minority Leader.**

Senator from the 14th District of Yakima County; is serving his fifth session. Born in 1927 in Yakima. Attended Whitman College and Yakima Valley College, is in the fruit growing, packing and shipping business. Veteran of WW II. Member, Elks, Kiwanis, and Chamber of Commerce. He and his wife, Judi, have five children.

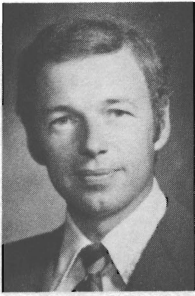


## **McDERMOTT, JAMES A. (Democrat)**

Senator from the 43rd District, King County. Is serving his second session in the Senate and served one term in the House. Age, 40. Graduate, Wheaton College, B.A., and University of Illinois Medical School; is a child and adult psychiatrist. LCDR (MC) USNR, 1968-70. Former chairman, Coalition for Open Government. Member, COPA Board, Visiting Nurse Assn. Board; Allied Arts. He and his wife, Virginia, have two children.



# SENATORS



**MORRISON, SID W. (Republican)** Senator from the 15th District of Yakima County, is serving his second session, preceded by eight years in the House of Representatives. Born in 1933 in Yakima. Graduate, Washington State University with B.S. in Agriculture, is a fruit grower. Served in the Army overseas. Former Chairman, Washington Apple Commission. Member, Methodist Church, Grange, Farm Bureau, Rotary, active in Scouting and United Way. He and his wife, Marcella, have four children.

**MURRAY, JOHN S. (Republican)** Senator from the 36th District of King County, served two sessions in the House and is serving his fourth session in the Senate. Born in 1925 in Albany, Missouri. Attended Stanford and Harvard Graduate School of Business. Graduate of University of Washington. President of Murray Publishing Company and Argus Publishing Company. Past President of Washington Newspaper Publishers Association and Chairman of the Oceanographic Commission of Washington. Combat Engineer in the Army and public accountant. Member of Methodist Church. He and his wife, Virginia, have four children.



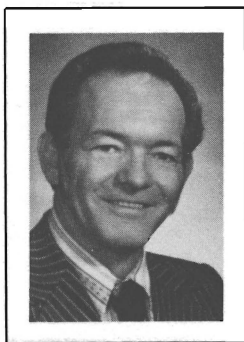
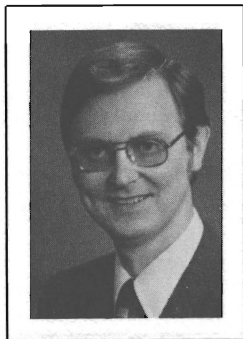
**NEWSCHWANDER, CHARLES E. (Republican), Minority Caucus Chairman.** Senator from the 28th District of Pierce County, serve four sessions in the House and is serving his fifth session in the Senate. Born in 1920 in Tacoma. Attended University of Puget Sound and Graduate, University of Oregon Dental School, is a dentist. Served in WW II and Korean War. Member, Masons, Scottish Rite. He and his wife, Emma, have four children and one granddaughter.

**NORTH, LOIS (Republican)** Senator from the 44th District of King County, is serving her second session in the Senate. Served three terms in the House of Representatives. Born in Berkeley, California. Graduate, U. of C. at Berkeley with B.A. and General Secondary Teaching Credentials. Former President, Seattle League of Women Voters; King County Freeholder. Trustee, Board of NW Hospital, Senior Services Centers, Planned Parenthood. She is the mother of three sons.



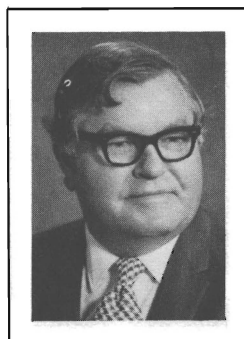
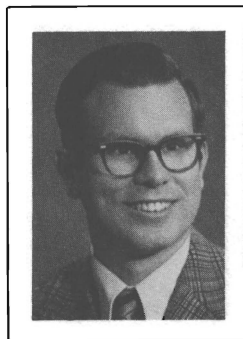
# SENATORS

**ODEGAARD, GARY M. (Democrat), Majority Caucus Secretary.** Senator from the 20th District comprising Lewis and Wahkiakum Counties and part of Cowlitz, Pacific and Thurston Counties, is serving his fifth session. Born in 1940 in Bellingham. Graduate, WWSC with B.A. in Education, Graduate work at U of W, is a teacher. Member, Alpha Grange, Centralia College Ed. Assn., Lewis County Pomona Grange, and International Reading Assn. Also member of Onalaska Presbyterian Church, Centralia-Chehalis Elks, and Chehalis Eagles. He and his wife, Kay, have two sons.



**PETERSON, LOWELL (Democrat)** Senator from the 40th District comprising San Juan and Skagit Counties and part of Whatcom County, he is serving his seventh session. Born in 1921 in Pateros, Washington, is an oil distributor. Served in the Navy in WW II. Member, American Legion, Eagles and Elks. A widower, Senator Peterson has three children at the family home in Concrete.

**PULLEN, KENT (Republican)** Senator from the 47th District serving his second session in the Senate, and has served one term in the House. Born in El Paso, Texas, in 1942. Graduate of University of New Mexico (B.S., 1963) and University of Washington (Ph.D., 1967). Former Assistant Professor of Chemistry at the University of Idaho. Currently works as a research engineer for the Boeing Company. He and his wife, Fay, have two children.



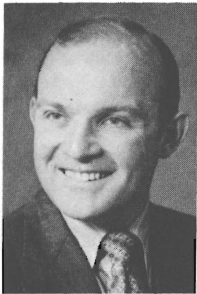
**RASMUSSEN, A. L. "SLIM" (Democrat)** Senator from the 29th District of Pierce County. Has served eight terms in the House and is serving his seventh session in the Senate. Former Mayor of Tacoma. Born in Everett in 1909. He and his wife, Eleanor, have four children.

# SENATORS



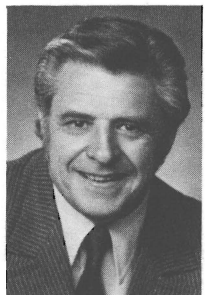
**RIDDER, RUTHE (Democrat)** Senator from the 35th District of King County. Elected to the Senate in November 1973 for the unexpired term. Reelected in November 1974 for a four-year term. Graduate of the University of Washington with a B.S. in Psychology. Member: SPI Basic Skills Assessment Adv. Comm., Wash. State Women's Council, Trustee, Rainier Beach Women's Club. She and her husband, Bob, have five children.

**SANDISON, GORDON (Democrat)** Senator from the 24th District comprising Clallam, Jefferson, and Mason Counties and part of Thurston County. Served five sessions in the House and is serving his tenth session in the Senate. Born in 1919 in Auburn. Graduate, University of Washington, is an Insurance Broker and Realtor. Served in the Marines during WW II. Member Elks, Eagles, VFW, Disabled American Veterans, Grange, American Legion, Alpha Tau Omega. He and his wife, Muriel, have five children.



**SCOTT, GEORGE W. (Republican)** Senator from the 46th District of King County, served one session in the House of Representatives and is serving his fourth session in the Senate. Born in 1937 in Seattle. Graduate, Whitworth College with B.A. in Philosophy. Holds M.A. and Ph.D. degrees from U of W in History, is Vice Pres. for Social Policy at RainierBank. His wife, Carol, is Professor of Music at Seattle Pacific College.

**SELLAR, GEORGE L. (Republican)** Senator from the 12th District comprising Chelan and Douglas and part of Grant and Okanogan Counties, serving his fourth session in the Senate. Born in 1929 in Chicago, manager of Eye & Ear Optical in Wenatchee. Attended Wen. Valley College and Univ. of Nebraska. Member, Wash. St. Dispens. Optician Assn., Pac. Coast Contact Lens Society, Chamber of Commerce, Douglas County Regional Plan. Bd. He lives in East Wenatchee with his wife, Alma.



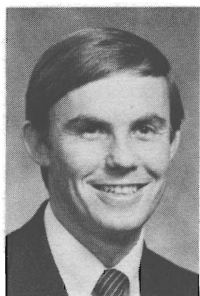
# SENATORS

**TALLEY, DON L. (Democrat)** Senator from the 18th District comprising part of Cowlitz and Clark Counties, is serving his eleventh session. Born in 1918 in Tacoma. Graduate, high school, is employed as a Safety Supervisor for the Port of Longview. Served in the Navy during WW II. Chairman, Oceanographic Commission of Washington. Member, Masons, Elks, Moose, Eagles, American Legion, Grange, and D.A.V. He and his wife, Deloris, have four children.



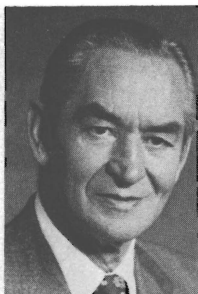
**VAN HOLLEBEKE, RAY (Democrat)** Senator from the 1st District comprising part of King and Snohomish Counties, and is serving his third session in the Senate. A 34-year resident of the State of Wash. Bachelor of Commercial Science in Finance, Seattle University; Juris Doctor, Gonzaga University. Korean War veteran. Married to Donna Saur of Selah since 1953. They have nine children, ages 7 to 23 years old: Thersa, Maria, Kevin, Rita, Ann, Louie, Leo, Chris and Larry.

**von REICHBAUER, PETER (Democrat)** Senator from the 30th District, comprising So. King County (Auburn, Federal Way, Kent and Vashon Island). Elected to Senate in Nov. 1973 for unexpired term; reelected in Nov. 1974 for a four-year term. Born in Seattle, raised in Tacoma, graduated from University of Alabama, commissioned in U.S. Army, and is self-employed; Kiwanis, Jaycees, Wash. Asian-American Assn. (Board of Directors), CHOICE (Board of Directors), Chamber of Commerce, Beta Theta Pi, Washington Football Foundation, Ducks Unlimited, and others.



**WALGREN, GORDON L. (Democrat), Majority Leader.** Senator from the 23rd District of Kitsap County, served one session in the House and is serving his fifth session in the Senate. Born in 1933 in Bremerton. Graduate, University of Washington with B.A. and J.D. degrees, is an attorney. Member, Elks, Eagles, Kiwanis, Masonic Orders. Former Prosecuting attorney, Kitsap County. City attorney for Bremerton and Port Orchard. Holder, Freedoms Foundation Award. He and his wife, Sue, have two daughters.

# SENATORS



**WANAMAKER, F. (PAT) (Republican), Minority Caucus Vice Chairman.** Senator from the 10th District of Snohomish (part) and Island Counties. Has served three terms in the House of Representatives, and is serving his third session in the Senate. Born in Port Townsend. Educated at the University of Washington. He is a retired farmer. Member, Methodist Church, Masons, Chamber of Commerce, Lions and Elks. He and his wife, Irene, have four children.

**WASHINGTON, NAT W. (Democrat)** Senator from the 13th District comprising Kittitas and part of Grant and Yakima Counties. Served one session in the House and is serving his fourteenth session in the Senate. Born in 1914 in Coulee City. Graduate, University of Washington Law School, is an attorney. Served in the Air Force in WW II. President, Western Conference of Council of State Governments, 1971-72. Member, Grange, Masonic Lodge. He and his wife, Wanda, have two sons.



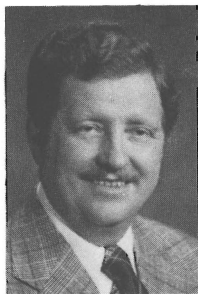
**WILSON, BRUCE A. (Democrat)** Senator from the 7th District comprising Ferry, Stevens, Pend Oreille and Lincoln Counties and portions of Okanogan and Spokane Counties. Serving his fourth session. Born in 1921 in Chicago. Graduate, Northwestern University. Retired weekly newspaper publisher. Past president, Omak Chamber of Commerce and Okanogan County Historical Society. He and his wife, Merilynn, have four children.

**WOJAHN, LORRAINE (Democrat)** Senator from the 27th District of Pierce County. Completed four terms in House of Representatives and serving her first term in the Senate. Born in Tacoma. Educated in Seattle schools and U of W. Former consumer specialist for Wash. Labor Council, Member: Consumer Credit Counseling Service, Inc., Seattle & Tacoma; Wash. State Judicial Council; served 5 years on Wash. St. Women's Council; 1 year on Nat'l. Adv. Board of Consumer Federation of America. She and her husband, Gilbert, have one son.

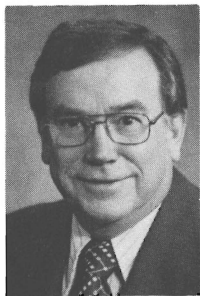
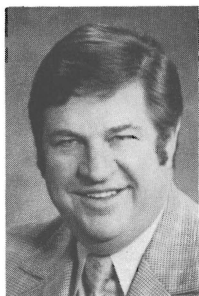


# SENATORS

**WOODY, FRANK J. (Democrat)** Senator from the 39th District of Snohomish and King Counties (parts), is serving his third session in the Senate. Born in Helena, Montana in 1937, he has been a resident of Snohomish County for thirty-five years. Graduate of the University of Washington and the University of Washington Law School, he is a practicing attorney. He and his wife, Dianne, have two children, Elizabeth and Patrick.



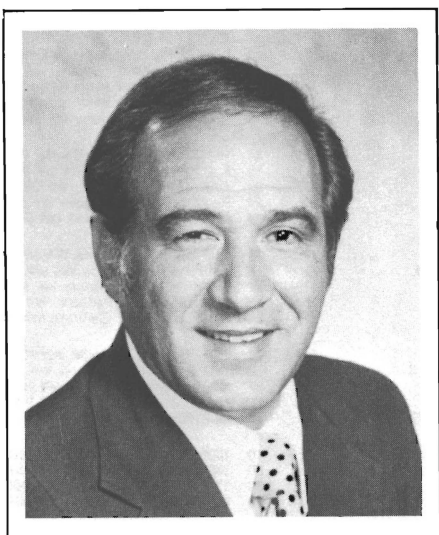
**SNYDER, SID (Democrat)** Secretary of the Senate, elected May 1969, and serving his fifth session. Was Assistant Chief Clerk and Acting Chief Clerk of the House from 1957 through May, 1969. First worked for the Legislature in 1949. Born in 1926 in Kelso. Attended Lower Columbia College, owns and operates a supermarket. Past Director of Washington State Food Dealers Association. Member, Elks, Lions. He and his wife, Bette, have three grown children.



**JOHNSON, CHARLIE (Democrat)** Elected Sergeant at Arms of the Senate 1957 through 1977. A member of the House in 1951 and 1952; he served as Sergeant at Arms of the House in 1955 and 1956. Born in 1911 in Elko, Wyoming. Member, Elks and Washington Athletic Club.



# HOUSE OF REPRESENTATIVES OF THE STATE OF WASHINGTON



**JOHN A. BAGNARIOL**  
**Speaker of the House**

John A. Bagnariol (Democrat), who is currently serving his first term as Speaker of the House, has represented the 11th Legislative District of King County for 10 years. He has previously held leadership positions in the House of Representatives and served two terms as Chairman of the Ways and Means Committee. A first generation Italian born in 1932, Representative Bagnariol resides with his wife Edna and eight children in Renton, Washington. He owns and operates an insurance agency in the same city.

# ROSTER OF MEMBERS

## HOUSE OF REPRESENTATIVES

98 Members—  
62 Democrats, 36 Republicans

NAME	PARTY	DIST.	ADDRESS
ADAMS, A. A.	D	27	601 N. Yakima, Tacoma, WA 98403
AMEN, Otto	R	9	Route 1, Box 45, Ritzville, WA 99169
BAGNARIOL, John	D	11	2008 S.E. 17th Court, Renton, WA 98055
BARNES, Richard O.	R	33	18118 6th Ave. S.W., Seattle, WA 98166
*BARR, Scott	R	7	Route 1, Box 130, Edwall, WA 99008
BAUER, Albert	D	49	13611 N.E. 20th Ave., Vancouver, WA 98665
BECKER, Mary Kay	D	42	P.O. Box 81, Bellingham, WA 98225 So Bellingham Station
BENDER, Rick S.	D	1	3511 N.E. 158th Place, Seattle, WA 98155
BERENTSON, Duane	R	40	P. O. Box 426, Burlington, WA 98233
BLAIR, Scott	R	46	8712 25th Avenue N.E., Seattle, WA 98115
BOLDT, Jim	D	8	4416 W. Rio Grande Ave., Kennewick, WA 99336
BOND, R. M. Dick	R	6	S. 4226 Crestline, Spokane, WA 99203
*BURNS, Bill	D	43	2511 W. Montlake Place E., Seattle, WA 98112
CHANDLER, Rod	R	45	13003 N.E. 143rd, Kirkland, WA 98033
CHARETTE, Robert L.	D	19	P. O. Box 63, Aberdeen, WA 98520
CHARNLEY, Donn	D	44	19344 11th Ave. N.W., Seattle, WA 98177
*CLAYTON, Harold	R	15	P. O. Box 467, Toppenish, WA 98948
CLEMENTE, Art	D	39	4422 228th S.E., Bothell, WA 98011
CONNER, Paul H.	D	24	Route 4, Box 355, Sequim, WA 98382
*CRASWELL, Ellen	R	23	11826 Kitsap, Bremerton, WA 98310
DECCIO, Alex A.	R	14	P. O. Box 1343, Yakima, WA 98901
DOUTHWAITE, Jeff	D	43	5518 31st N.E., Seattle, WA 98105
DUNLAP, Ron	R	41	3129 109th S.E., Bellevue, WA 98004
EHLERS, Wayne	D	?	14301 S. Yakima, Parkland, WA 98444
*ENBODY, Joseph	D	20	1216 Sunset Way, Centralia, WA 98531
ENG, John	D	37	P. O. Box 18088, Seattle, WA 98118
ERICKSON, Phyllis K.	D	2	P. O. Box 44487, Parkland, WA 98444
*FANCHER, Helen	R	7	Aeneas Route, Tonasket, WA 98855
FISCHER, John M.	D	21	23424 88th W., Edmonds, WA 98020
FLANAGAN, S. E. "Sid"	R	13	Rt. 2, 989 Rd. S NW, Quincy, WA 98848
FORTSON, Eleanor A.	D	10	4008-S.W. Camano Dr., Camano Island, WA 98292
*FULLER, W. H. "Bill"	R	20	330 Brockway Road, Chehalis, WA 98532
GAINES, Robert E. "Bob"	D	30	336 Park Avenue, Auburn, WA 98002
GALLAGHER, P. J. "Jim"	D	29	125 South 72nd, Tacoma, WA 98408
GILLELAND, James E.	R	48	3234 Hunts Point Road, Bellevue, WA 98004
GREENGO, Irv	R	46	3203 N.E. 88th, Seattle, WA 98115
*GRIER, Jack W.	D	4	13002 E. Maxwell, Spokane, WA 99216
*GRIMM, Dan	D	25	904 7th Ave. S.W., Puyallup, WA 98371
*GRUGER, Audrey	D	1	3727 N.E. 193rd, Seattle, WA 98155
HALEY, Ted	R	28	5800 100th St. S.W. #30, Tacoma, WA 98499
HANNA, Ron	D	26	P. O. Box 5313, Tacoma, WA 98405
HANSEN, Frank "Tub"	D	13	Star Route, Box 73, Moses Lake, WA 98837
HAWKINS, John R.	D	26	3102 North Monroe, Tacoma, WA 98407
*HECK, Dennis L.	D	17	707 N.E. 118th Ave., Vancouver, WA 98664
*HUGHES, Jerry M.	D	5	N. 5511 Moore, Spokane, WA 99208
HURLEY, George S.	D	44	10709 1st Ave. N.W., Seattle, WA 98177
HURLEY, Margaret	D	3	E. 730 Boone, Spokane, WA 99202
*KELLER, Ron	D	22	1319 Dickinson, Olympia, WA 98502
KILBURY, Charles D.	D	16	P. O. Box 2482, Pasco, WA 99302

\*New Member

# ROSTER OF MEMBERS

## HOUSE OF REPRESENTATIVES

98 Members—  
62 Democrats, 36 Republicans

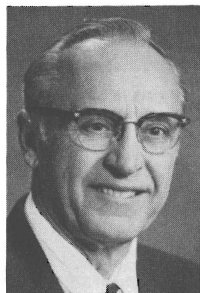
NAME	PARTY	DIST.	ADDRESS
KING, Richard "Dick"	D	38	309 77th Place S.W., Everett, WA 98203
*KNEDLIK, Will	D	45	11454 N.E. 116th St., Kirkland, WA 98033
KNOWLES, Walt O.	D	4	E. 8423 Liberty, Spokane, WA 99206
*KREIDLER, Mike	D	22	4003 Alonna Drive N.E., Olympia, WA 98506
LECKENBY, William	R	34	P. O. Box 21185, Seattle, WA 98111
LEE, Eleanor	R	33	P. O. Box 66274, Burien, WA 98166
LUX, Eugene V.	D	35	11675 Beacon Ave. S., Seattle, WA 98178
LYSEN, King	D	31	12864 Shorecrest Dr. S.W., Seattle, WA 98146
MARTINIS, John	D	38	209 Bridgeway, Everett, WA 98201
MAXIE, Peggy Joan	D	37	3302 E. Pine, Seattle, WA 98122
MAY, William J. S. "Bill"	D	3	Sans Souci West, W. 3231 Boone Avenue, Space 711, Spokane, WA 99201
McCORMICK, Geraldine	D	5	W. 1829 Northridge Ct. #4, Spokane, WA 99208
McKIBBIN, John S.	D	49	11205 N.E. 10th Ave., Vancouver, WA 98665
*MONOHON, Carol	D	19	Route 1, Box 136, Raymond, WA 98577
MOREAU, Art	D	42	2101 Erie, Bellingham, WA 98225
*NELSON, Dick	D	32	3612 Whitman North, Seattle, WA 98103
NELSON, Gary A.	R	21	9710 Wharf Street, Edmonds, WA 98020
NEWHOUSE, Irving	R	15	Route 1, Box 130, Mabton, WA 98935
NORTH, Frances C.	D	47	Box 441, North Bend, WA 98045
O'BRIEN, John L.	D	35	1305 Joseph Vance Bldg., Seattle, WA 98101
*OLIVER, Claude L.	R	8	302 South Reed, Kennewick, WA 99336
*OWEN, Brad	D	24	918 Ellinor Street, Shelton, WA 98584
PARDINI, A. J. "Bud"	R	6	E. 1625 20th Avenue, Spokane, WA 99203
PARIS, William "Bill"	R	18	620 Oregon Way, Longview, WA 98632
PATTERSON, E. G. "Pat"	R	9	N.E. 400 Campus, Pullman, WA 99163
*PEARSALL, Cathy	D	29	2604 S. 76th, Tacoma, WA 98409
POLK, William	R	41	7220 92nd Avenue S.E., Mercer Island, WA 98040
*PRUITT, Paul	D	34	7537 31st S.W., Seattle, WA 98126
*SALATINO, James E.	D	27	522 North "I" Street, Tacoma, WA 98403
SANDERS, Paul	R	48	2680 169th S.E., Bellevue, WA 98008
*SCHMITTEN, Rolland	R	12	408 S. Division St., Cashmere, WA 98815
SHERMAN, Marion Kyle	D	47	24629 S.E. 200th, Maple Valley, WA 98038
*SHINODA, Paul Y.	R	39	210 6th Street, Snohomish, WA 98290
SHINPOCH, A. N. "Bud"	D	11	361 Maple Avenue N.W., Renton, WA 98055
SMITH, Rick	D	23	P.O. Box 68, Silverdale, WA 98383
SOMMERS, Helen	D	36	2516 14th West, Seattle, WA 98119
*STRUTHERS, Gene	R	16	1887 Home Avenue, Walla Walla, WA 99362
*TALLER, Joe	R	36	2852 42nd Avenue W., Seattle, WA 98199
THOMPSON, Alan	D	18	112 Pleasant Hill Lane, Kelso, WA 98626
TILLY, Earl F.	R	12	P.O. Box 1845, Wenatchee, WA 98801
VALLE, Georgette	D	31	1434 S.W. 137th, Seattle, WA 98166
*VROOMAN, Jerry L.	D	40	3120 Marlee Drive, Burlington, WA 98233
*WALK, George W.	D	25	904 9th Street S.W., Puyallup, WA 98371
WARNKE, Frank J.	D	30	29457 51st South, Auburn, WA 98002
WHITESIDE, Jim	R	14	3612 Howard Avenue, Yakima, WA 98902
WILLIAMS, Al	D	32	4801 Fremont North, Seattle, WA 98103
WILSON, Simeon R. "Sim"	R	10	P.O. Box 145, Marysville, WA 98270
*WINSLEY, Shirley J.	R	28	539 Buena Vista Avenue, Fircrest, WA 98466
ZIMMERMAN, Hal	R	17	1432 N.E. 6th Avenue, Camas, WA 98607
*New Member			

# REPRESENTATIVES



**ADAMS, A. A. (Democrat)** Representative from the 27th District of Pierce County, is serving his fifth term. Born in Bellingham, Washington. Graduated from Palmer College of Chiropractic, in Davenport, Iowa. Past President of American Chiropractic Association. Former Chairman of Tacoma Public Utility Board, Board of Directors of Boys Club of America. Member, Masonic bodies and Elks. He and his wife, Mildred, have one daughter.

**AMEN, OTTO (Republican)** Representative from Legislative District 9 comprising Adams, Asotin, Garfield, Columbia, parts of Grant and Whitman Counties, is serving his sixth term. Graduate, W.S.U. with a B.S. in Pharmacy, is engaged in farming. Member, Grange, Farm Bureau, Lions International, and Chamber of Commerce. Served as President of Washington Wheat Commission, and State Coordinator of Food for Peace. He and his wife, Doris, have two sons.



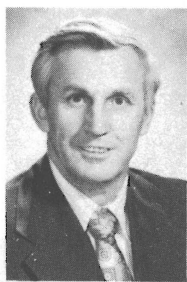
**BAGNARIOL, JOHN (Democrat)** Representative from the 11th District since 1967, is serving his first term as Speaker. Born in 1932 in Renton. Active in community service. He is currently self-employed as an insurance agent. He and his wife, Edna, have eight children.

**BARNES, DICK (Republican)** Representative of the 33rd District, Des Moines, Normandy Park, the Sea-Tac Airport and parts of Burien serving his second term. Born in Iowa he left the University of Illinois to become an Air Force pilot during World War II. As a Reservist he was recalled for duty during the Korean and Viet Nam wars. Educated as a Geophysical Engineer at the Colorado School of Mines, employed by the Boeing Company since 1955 and is presently a Systems Analyst in Air Traffic Control Studies. He and his wife, Sylvia, have three children.



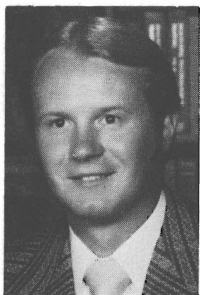
# REPRESENTATIVES

**BARR, SCOTT (Republican)** Representative from the 7th District comprising Lincoln, Pend Oreille, Stevens, Ferry and parts of Okanogan and Spokane Counties. Serving his first term in the House. Born in 1916 in Hooper, WA. Attended Whitman Co. Public Schools and Special W.S.U. Courses. He and his wife Evelyn have lived near Edwall in Lincoln Co. since 1948.



**BAUER, ALBERT (Democrat)** Representative from the 49th District of Clark County, is serving his fourth term and is Chairman of the House Democratic Caucus. Born in Lewistown, Montana in 1928. Graduate Portland State College and Oregon State College with Masters in Education. Currently, President and co-owner of Family Farm Corporation. Past President, Community Club, PTA, Vancouver Education Assoc. Member, Kiwanis, Grange, American Legion. He and his wife, Patricia, have three children.

**BECKER, MARY KAY (Democrat)** Representative from the 42nd District, western Whatcom County is majority whip and is serving second term. Born in Aberdeen, Washington; raised on the Olympic Peninsula at Kalaloch. Graduate, Stanford University; also received B.A. from WWSC. Co-authored book on oil spills; worked for VISTA and Legal Services. Legal secretary in Bellingham.



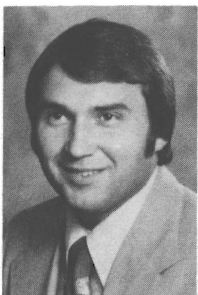
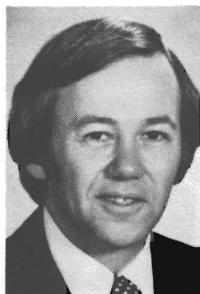
**BENDER, RICK S. (Democrat)** 3rd term Representative from the 1st District of north King and south Snohomish Counties. Born in Fairbanks, Alaska in 1949. Asst. Majority Floor Leader. Attended the U of W and will graduate with a degree in economics from UPS; served in the U.S. Army Signal Corps, Vietnam veteran.

# REPRESENTATIVES



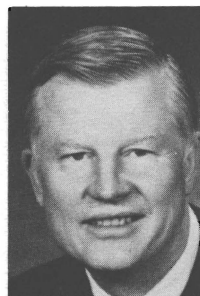
**BERENTSON, DUANE (Republican)** Representative from the 40th District comprising San Juan, Skagit and Whatcom Counties, is serving his eighth term and is Minority Leader. Born in 1928 in Anacortes. Graduate, Pacific Lutheran University, he is in the securities business. He and his wife, Joanne, have five children.

**BLAIR, SCOTT (Republican)** has represented the 46th District in the House since 1970 and has also been active in many civic and community groups. Blair is currently the ranking Republican member of the House Financial Institutions Committee and of the Public Pensions Subcommittee. He also serves on the Local Government and the Appropriations Committees.



**BOLDT, JAMES M. (Democrat)** Representative from the expanding nuclear and agricultural 8th district of eastern Washington. Serving his first term as assistant majority whip. Born, Richland, Washington in 1950, he is a resident of Kennewick. Boldt, an Environmental Science (Biology) graduate of W.S.U. Jim is an Environmental Planner for Columbia Engineers Services Inc. Richland. He is a sophomore in the 45th Legislature.

**BOND, R. M. (DICK) (Republican)** Representative from 6th District of Spokane County, serving his second term. Born in Spokane, educated at Calif. Institute of Tech., Univ. of Calif. (ASB President), Univ. of So. Calif. with degrees in Mech. Engr., Bus. Admin., and a Comm. Pilots lic. Dick is a Marine Corps WW II vet., Rotarian, American Legion, Director of Nat'l. LP-Gas Assoc., Air Force Assoc., Eagle Scout and a Christian. He founded and operates Solar Gas Company in Spokane and Calgary. He and his wife, Patty, have three sons.





# REPRESENTATIVES

## **BURNS, WILLIAM L. (BILL) (Democrat)**

Representative from the 43rd District of King County is serving his first term. Born in 1927 in Brockwell, Arkansas. Attended U of W. Employed by Sears, Roebuck. Past President, Central Seattle Community Council Federation and Montlake Community Club. Member, Exec. Committee, Seattle 2000 Commission, CHECC, CARHT. Member, Municipal League, Common Cause. He and his wife, Doris, have one daughter, Susan.

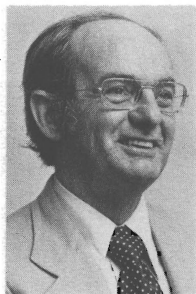


## **CHANDLER, ROD (Republican)**

Representative from the 45th District comprising the northeast portion of King County, is serving his second term. Born in 1942 in La Grande, Oregon. A former television news correspondent, he is now an Assistant Vice President at Washington Mutual Savings Bank. He and his wife, Joyce, have a son, John, 6, and a daughter, Amanda, 4.

## **CHARETTE, ROBERT L. (Democrat)**

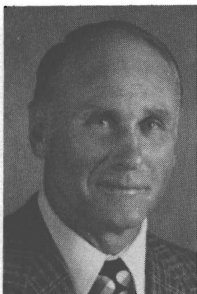
Representative from the 19th District comprising Pacific (part) and Grays Harbor Counties. Served one term in the Senate and is serving his sixth term in the House. Born in 1923 in Aberdeen. Graduate, Grays Harbor College and University of Washington Law School, he is a partner in a law firm. Member, Phi Kappa Psi, Phi Delta Phi, Grays Harbor and American Bar Association, VFW, and Military Order Purple Heart. He and his wife, Betty, have three daughters.



## **CHARNLEY, DONN (Democrat)**

is serving his fourth term, representing the 44th District. Forty-eight years old, Donn is a professor of Geology at Shoreline Community College. He holds BA and MS degrees from U of Wash.; also attended Seattle U and U of Minn. He also serves on the Boards of the Nature Conservancy, Mental Health North, and the Northwest Kidney Center. Member, Richmond Beach Community Council and Shoreline Library Association. Donn and Lucy have five children.

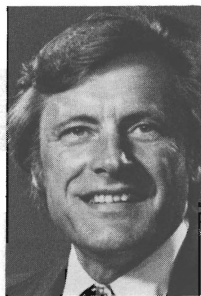
# REPRESENTATIVES



**CLAYTON, HAROLD R. (Republican)**

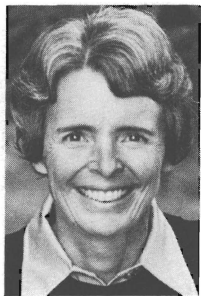
Representative from the 15th District comprising upper and lower rural areas of Yakima County. Elected 1976, is serving his first term. Born in 1920 in Idaho. Active in church, community affairs, including ten years Toppenish School Board Director. Twenty-five years diversified farming in central valley area. President Central Washington Farms Crops Association. Director of Washington Asparagus Association. He and his wife, Lois, have five children.

**CLEMENTE, ART (Democrat)** Representative from the 39th District, comprising parts of King and Snohomish Counties. Born in Hoquiam in 1925, King County Labor Council, Director, AFL-CIO Community Services Alcoholism Program. He is a Marine Corps veteran of WW II and a V.F.W. member, involved in citizen groups in schools, outdoor recreation and sportsman groups and youth activities. He has three sons.



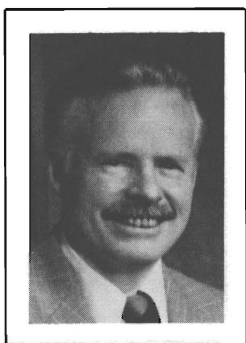
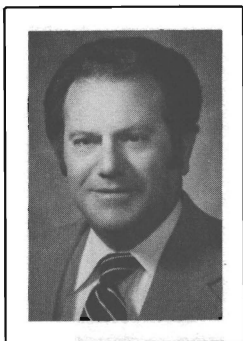
**CONNER, PAUL H. (Democrat)** Representative from the 24th District comprising Clallam, Mason, Jefferson and part of Thurston Counties. Appointed to the Senate in 1957; is now serving his tenth term in the House. Born in 1925 in Port Angeles. Attended, Port Angeles Business College, Western Washington State College and University of Washington. He and his wife, Thelma, have five children.

**CRASWELL, ELLEN (Republican)** Representative from the 23rd District, Kitsap County. Born in Seattle 1932; resident of Kitsap County 41 years. Attended the University of Washington. Worked in Medical Technology, Speech Therapy and co-owner and manager of an art shop. She and her husband, Bruce, have four children.



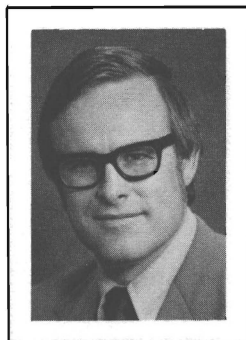
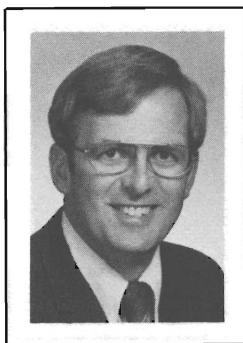
# REPRESENTATIVES

**DECCIO, ALEX A. (Republican)** Representative from the 14th District comprising upper half and central part of Yakima County, including city of Yakima. Born in Washington, life long resident of Yakima County. Insurance broker. He and his wife, Lucille, have eight children. Serving 2nd term, formerly representing 15th District.



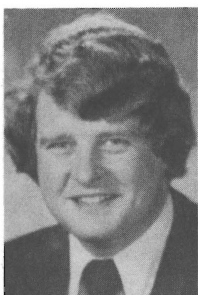
**DOUTHWAITE, JEFF (Democrat)** Representative from District 43 of King County, is serving his fourth term. Born in 1929 in Montreal, Canada. Graduate, University of Washington with B.S. and M.S. in Electrical Engineering, is a professor at University of Washington. Member, University District Community Council, AAUP, Ravenna Community Assn., University District Chamber of Commerce, Wash. Environmental Council, and Common Cause. He and his wife, Mary Louise, have three children.

**DUNLAP, RON (Republican)** is serving his second term as a Representative from the 41st District. Born in South Bend, Indiana, he studied Engineering at Purdue University (B.S. and M.S.) and then Economics at Harvard University. He is a member of management with Boeing Commercial Airplane Company's Sales Organization in Renton. He and his wife, Allison, live in Bellevue with their two daughters, Marcia and Lynne.



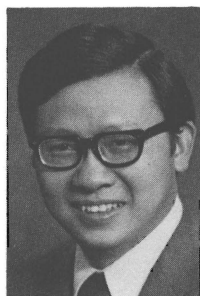
**EHLERS, WAYNE (Democrat)** Representative from the 2nd District of Pierce and Thurston Counties, is serving his third term. Born in Bellingham in 1938, he is an educator in both the public schools and university. Graduate of WWSC (B.A. and B.S.) and the University of Denver (M.A.). Active in professional and civic organizations. He and his wife, Frances, have two sons.

# REPRESENTATIVES



**ENBODY, JOSEPH P. (Democrat)** Representative from the 20th District comprising Lewis County and parts of Thurston, Pacific, Cowlitz Counties and all of Wahkiakum County. Born in 1946 in Olympia. A life-long resident of Lewis County and attorney in Centralia, he is a graduate of Centralia High School, University of Washington, and the University of Oregon Law School. Joe and his wife, Ruta, have two sons, Joe and Tom.

**ENG, JOHN (Democrat)** Representative from the 37th District of King County. He is serving his third term. Born in 1942 in Hong Kong. Graduate of University of Washington with B.A. in Business Administration. Former Peace Corps Volunteer. During 44th Legislative session served on Social and Health Services, Education, and Local Government Committees.



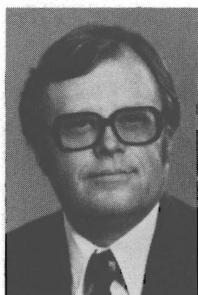
**ERICKSON, PHYLLIS K. (Democrat)** Representative from the 2nd District is serving her third term. A University of Utah graduate, she is a homemaker. Served as Chairman and member of local school board and District XI Community College board. Former State Board member, League of Women Voters, P.T.A. and American Cancer Society. She and her husband, Jack, have four children.

**FANCHER, HELEN I. (Republican)** Representative from the 7th District comprising Ferry, Stevens, Pend Oreille, Lincoln, and parts of Spokane and Okanogan Counties. Elected to the House of Representatives in 1976. Born in Seattle in 1931. Attended the University of Washington and Eastern Washington State College. She and her husband, Jick, have three children.

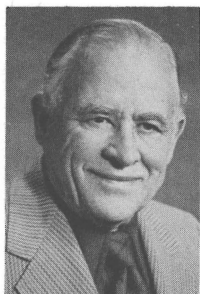


# REPRESENTATIVES

**FISCHER, JOHN M. (Democrat)** Representative from 21st District, Snohomish (part) serving second term. Born in Seattle, Washington. Attended Seattle University and University of Washington, B.S. degree in Pharmacy and B.A. degree in Economics. Chairman, Board Olympic View Water Districts, Precinct Committeeman, member, Kiwanis, Elks, Eagles, Moose, WSPA, APHA, Veteran WW II and Korean War. Working as a business representative.



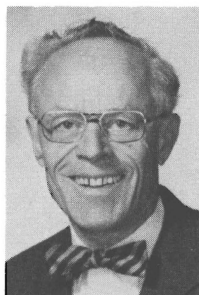
**FLANAGAN, SID (Republican)** Representative from the 13th District comprising Grant, Kittitas and part of Yakima Counties, is serving his ninth term. Born in 1909 in Bellingham. Graduate of the University of Washington, majoring in Public Utilities, he is a farmer and cattleman. Member, St. Pius Xth Catholic Church of Quincy. He and his wife, Vyvien, have three children.



**FORTSON, ELEANOR A. (Democrat)** Representative from the 10th District north Snohomish County and Island County, is serving her third term. A life-long resident of Washington State. Graduate of W.W.S.C. and Master's Degree in Administration. Member, State and National Grange, Washington Education Assoc., life member, P.T.A., Delta Kappa Gamma, pres. Received Citizen of the year award 1973, Who's Who in American Politics—3rd Edition, Who's Who in American Women—5th Edition Marquis.



**FULLER, WILLIAM H. (BILL) (Republican)** Representative from the 20th District made up of Lewis, Wahkiakum, and part of Cowlitz, Thurston, and Pacific Counties. Serving his first session. Born Sandpoint, Ida., 1913, Washington resident since 1930. A widower with six children.



# REPRESENTATIVES

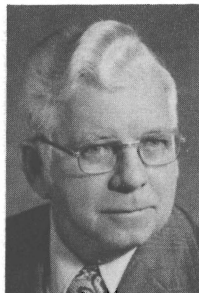


**GAINES, ROBERT E. (BOB) (Democrat)**

Representative from the 30th District of King County which encompasses Auburn, Federal Way and Vashon Island. Serving his third term in the House of Representatives. Former City Councilman, Mayor, Manager of Auburn Chamber. Now working at Title Realty. Past Exalted Ruler of Auburn Elks Lodge, member of Auburn Rotary, Eagles and American Legion.

**GALLAGHER, P. J. (JIM) (Democrat)**

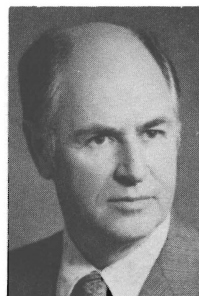
Representative from the 29th District of Pierce County, is serving his ninth term. Born in 1915 in Taylor, Washington. Graduate, Washington State University. He is employed in Public Relations and Sales. Member, Knights of Columbus and Eagles. He and his wife, Mabel, have six children.



**GILLELAND, JAMES E. (Republican)**

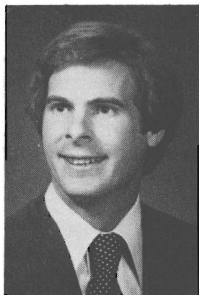
Representative from the 48th District of King County, is serving his fourth term. Born in 1918 in Seattle. Graduate, Franklin High School, attended University of Washington. Resident of Bellevue since 1943. Former owner of Gilleland Oil Inc. Retired 1972. Past Chairman UGN and Bellevue Quality School Levy Program plus many other youth related programs. He and his wife, Sylvia, have four children.

**GREENGO, IRV (Republican)** Representative from the 46th District, King County, is serving his second term. Born in Iowa in 1925. A B-29 Navigator during WW II. Graduate of University of Minnesota, B.S. Aeronautical Engineering; attended Seattle University Graduate School. He is an aircraft design engineer. Irv, his wife Beth, and their five children have lived in the 46th District for 27 years.



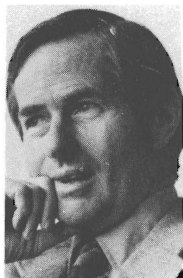
# REPRESENTATIVES

**GRIER, JACK W. (Democrat)** Representative from the 4th District comprising Spokane and Whitman Counties. Serving first term. Born 1930 in Spokane. Member, Veteran Foreign Wars, Valley Elks Lodge, Liberty Lake Golf Club and active in community service. Now employed as salesman. He and his wife, Dorothy, have three grown children and two grandchildren.



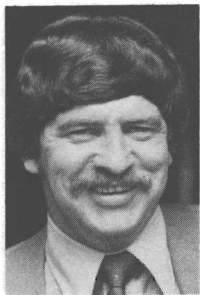
**GRIMM, DANIEL K. (Democrat)** Representative from the 25th District of Pierce and King Counties, is assistant majority whip, and is serving his first term. Life-long resident of Puyallup. Graduate, Columbia University with B.A. in English Literature. Personnel manager. Former staff director, House of Representatives research office.

**GRUGER, AUDREY LINDGREN (Democrat)** Representative from the First District comprising part of King and Snohomish Counties is serving her first term. Born in Minot, North Dakota in 1930; graduated from Roosevelt High School and the University of Washington. Served on the Board of Directors of the League of Women Voters of Seattle, and as Legislative Liaison for the Council of Planning Affiliates, (COPA). She and her husband, Edward, have three children; Sherri, Lawrence, and Linda.



**HALEY, TED (Republican)** Representative from the 28th District comprising Lakewood, Steilacoom, Fircrest and University Place, is serving his second term. Born in Tacoma in 1920. Has a B.A. from Amherst College and M.D. from the University of Rochester. Is a Lieutenant Colonel, retired, from the U.S. Army Medical Corps. In private practice in Lakewood. A widower with four grown children.

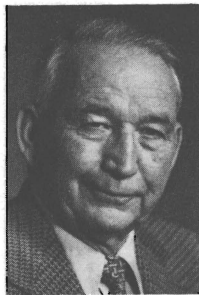
# REPRESENTATIVES



**HANNA, RON (Democrat)** Representative from the 26th District comprising Kitsap and Pierce Counties, is serving his second term. Born in 1937 in Tacoma. Attended Pacific Lutheran University (BA) and University of Washington (MSW). He is a Human Service Planner for Pierce County and Instructor at Pacific Lutheran University.

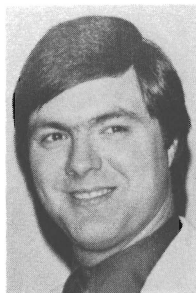
**HANSEN, FRANK D. "TUB" (Democrat)**

Representative from the 13 District comprised of Kittitas, most of Grant, part of Yakima Counties, serving his third term. Born in Olema, Washington, in 1913. Past Chairman, Agricultural Stabilization Conservation Service; Past Director, Washington State Cattlemen's Association. Member Grange and Elks. He and his wife, Wanda, have four children. Retired cattle rancher, resident of Grant County since 1917.



**HAWKINS, JOHN R. (Democrat)** Representative from the 26th District comprising portions of Pierce and Kitsap Counties, is serving his third term. Born in 1942 in Seattle. Graduated, University of Washington and has a B.A. degree. He is a Land Use Planner for the County of Pierce. Served in the U.S. Marine Corps as an Aerial Navigator. He and his wife, Pat, reside in Tacoma.

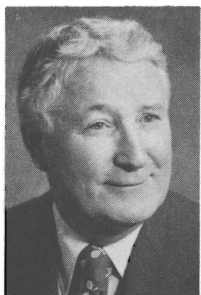
**HECK, DENNIS L. (Democrat)** Representative from the 17th District comprising Skamania, Klickitat and part of Clark Counties. Serving his first term, he is former Research Analyst for the House Education Committee and Dist. Representative for Congressman McCormack. B.A. Degree from the Evergreen State College. President, Sunrise Kiwanis. He and his wife, Paula, have no children.





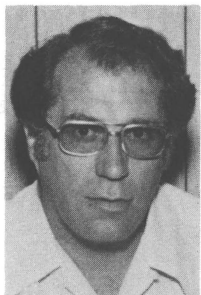
# REPRESENTATIVES

**HUGHES, JERRY M. (Democrat)** Representative from the 5th District, Spokane. Born in 1944, and a resident of Spokane since 1962, he is a graduate of Gonzaga University with a degree in Political Science and Government and is currently an instructor in Government and U.S. History at North Central High School, Spokane. He is married and has two children.



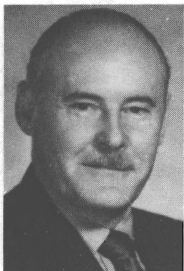
**HURLEY, GEORGE S. (Democrat)** Representative from the 44th District, Northwest Seattle area, part city of Seattle, part County N.W. to County Line, is serving his 2nd consecutive session from the 44th District. Formerly George served two successive terms from the old 37th District, the Capitol Hill area in Seattle, where he was born and raised and educated. Attended the University of Washington—majored in History. Married, has one grown daughter.

**HURLEY, MARGARET (Democrat)** Representative from the 3rd District of Spokane County, is serving her thirteenth term. Graduate, Holy Names College with Bachelor of Arts in Education. Member, Citizens Against Residential Freeways, National Order of Women Legislators, and Advisory Board of Good Shepherd Home. She has four children.



**KELLER, RON (Democrat)** Representative from the 22nd District, Thurston County is serving his first term. Born in 1937 in Olympia attended both U of W and WSU. Active in several civic and political organizations. His wife's name is Sue.

# REPRESENTATIVES



**KILBURY, CHARLES D. (Democrat)** Representative from District 16 (Walla Walla, Franklin, Columbia, part), is serving his fourth term. Born in Yakima, is a railroad switchman, and an insurance broker. He and his wife, Florence, have three children and one grandson.

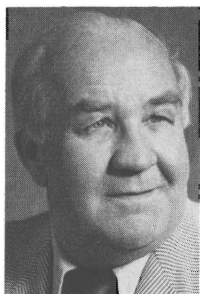
**KING, RICHARD (DICK) (Democrat)**

Representative from the 38th District of Snohomish County, is serving his seventh term. He is Majority Floor Leader. Born in 1934 in Ritzville. Graduate, University of Washington with B.A. and M.A. degrees, is a teacher at Everett Community College. He and his wife, Mary Eveiyn, have four children.



**KNEDLIK, WILL (Democrat)** Representative from the 45th District, located in north-eastern King County, serving his first term in the House. Born in 1946 in Snoqualmie. Graduated from Lake Washington High School, University of Washington and Harvard Law School. He and his wife Janet Leshe, live in Kirkland.

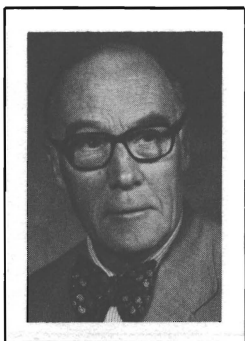
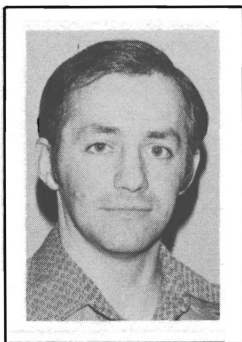
**KNOWLES, WALT (Democrat)** Representative from the 4th District comprising Spokane and Whitman Counties. Serving his fourth term. Born and educated in Spokane, is a graduate of Eastern Washington College and Gonzaga University, attended University of Washington. He is a veteran of World War II and Korea, a practicing attorney in Spokane, and former state president of Moose. Currently chairman of House Judiciary Committee. He and his wife, Betty, have three children.



# REPRESENTATIVES

## **KREIDLER, MYRON "MIKE" (Democrat)**

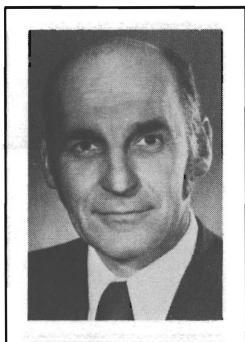
Representative from the 22nd District located in Thurston County and including the state capitol. Elected in 1976 to the House. Born in 1943 in Tacoma. Graduating from Curtis H.S., Pacific University and the University of California at Los Angeles. He is a Group Health optometrist and with his wife, Lela, and their three children live in Olympia.



## **LECKENBY, WILLIAM S. "BILL" (Republican)**

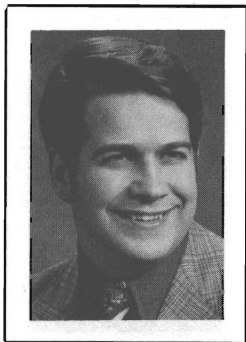
Representative, 34th District, West Seattle, King County. Birthplace, Seattle 1910. Wife is former Josephine Garofalo. They have two sons and one daughter, all adult. Founder and Board Chairman of the Leckenby Company. Now serving his fifth term in the House of Representatives.

**LEE, ELEANOR (Republican)** Representative from the 33rd District. Attended Washington State University and graduated from The Evergreen State College in political science. Business manager and director of a manufacturer's representative firm. Former State Land Planning Commissioner and League of Women Voters official. Member of King County Policy Development Commission, Washington State Women's Commission, and Basic Aid to Schools in Crisis (BASIC) co-chairman. She and her husband, David, have three daughters.



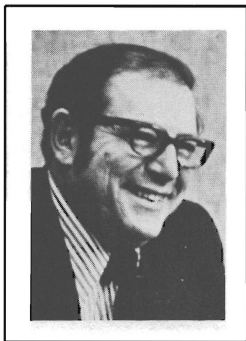
**LUX, EUGENE (Democrat)** Representative from the 35th District of King County, an area of southeast Seattle comprising the largest multi-ethnic population in the State. Served interim Senate appointment 1973. Appointed and elected to the House in 1975. Born in Lincoln, Nebraska in 1926, has been a building contractor in southeast Seattle for 29 years. Board trustee Group Health Cooperative of Puget Sound, board member Lee House Senior Center. Served in Merchant Marine, active in consumer, community and cooperative organizations. He and his wife, Lillian, have three grown daughters.

# REPRESENTATIVES



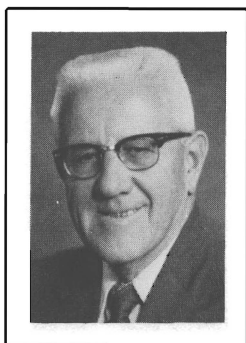
**LYSEN, KING (Democrat)** Representative from the 31st District of King County, is serving his fourth term. Born in 1942 in Minneapolis. Graduate, Seattle University with degree in Education and Political Science, a former high school teacher and counselor. Partner in a small farm commodities and real estate business. He and his wife, Tony, have three children.

**MARTINIS, JOHN (Democrat)** Representative from the 38th District of Snohomish County, is serving his fifth term. Born in 1930 in Everett. He is a retail merchant.



**MAXIE, PEGGY JOAN (Democrat)** Representative from the 37th District of King County, is serving her fourth term. Born in 1936 in Amarillo, Texas. Graduate, Seattle University with B.A. in Psychology, University of Washington with Master's degree in Social Work.

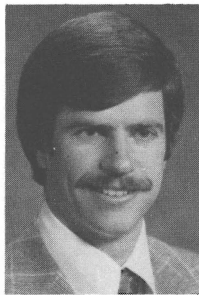
**MAY, WILLIAM J. S. "BILL" (Democrat)** Representative from the 3rd District of Spokane County, is serving his ninth term. Graduated from high school and has taken special courses in Advertising and Electronics. Recently retired. Active in Civic affairs and now serving on Spokane Transit Commission. He and his wife, Pearl, have three children.



# REPRESENTATIVES

**McCORMICK, GERALDINE (Democrat)**

Representative from District 5 of Spokane County, is serving her fifth term and is Majority Caucus Secretary. Born in Spokane. Attended Whitworth College, and is a homemaker. Member, Eagles Lodge, Triangle Grange, and VFW Auxiliary. She has two daughters and two grandchildren.

**McKIBBIN, JOHN (Democrat)**

Representative from the 49th District encompassing Vancouver and most of Clark County, is serving his second term. Born in San Diego, Calif. He is a graduate of Central Washington State and Lewis and Clark Colleges. He is a teacher of Contemporary World Problems at the high school level. He and his wife, Nancy, have been married six years.

**MONOHON, CAROL (Democrat)** Representative from the 19th District comprising Grays Harbor and part of Pacific Counties. Born in 1945 in Raymond. Graduate of Grays Harbor College, University of Puget Sound with a B.A. in Political Science. Attends U.P.S. School of Law (2nd year). Carol, her husband, Robert, her son, Bryon and her daughter, Sharron live in Raymond.



**MOREAU, ART (Democrat)** Representative from the 42nd District comprising Whatcom County (part), is serving his second term. Born in 1936 in Bellingham, Washington. Attended W.W.S.C., S.V.C., and W.S.U. He is a Pulp Bleaching Operator for Georgia-Pacific Corporation. Served in the U.S.A.F. He and his wife, Janet, have two daughters, Suzanne and Kimberlee.

# REPRESENTATIVES



**NELSON, R. P. "DICK" (Democrat)** Representative from the 32nd District comprising the Ballard, Fremont, Green Lake, Greenwood, Phinney, and Wallingford neighborhoods of Seattle. Elected in 1976, is serving his first term in the House. Born in 1936 in Seattle. Graduate of the University of Washington (Engineering) and the Massachusetts Institute of Technology. Self-employed technical consultant.

**NELSON, GARY A. (Republican)** Representative from the 21st District of Snohomish County (part) is serving his third term. Born in Spokane, received B.S. in Electrical Engineering from W.S.U. and M.S. from U of Wisconsin. Served three years in Air Force as a communications officer. Staff Manager of Revenue Requirements in private utility. Past Edmonds City Councilman and planning commission member. Received Edmonds Distinguished Service Award. His wife, JoAnne, is an education consultant and author. They have three sons.



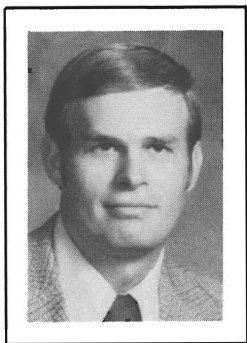
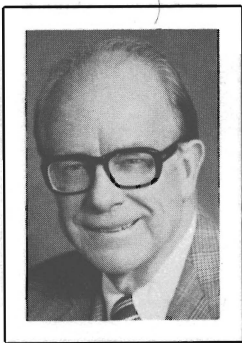
**NEWHOUSE, IRVING (Republican)** Representative from District 15 of Yakima County, is serving his seventh term. Assistant Minority Leader. Native of the Yakima Valley, graduate of Washington State University with B.S. in Agriculture, operates an irrigated, diversified ranch. He and his wife, Ruth, have six children.

**NORTH, FRANCES C. (Democrat)** Representative from the 47th District of King County, is serving her third term. Native to the Renton area, she attended Seattle University. A North Bend Councilwoman for eight years, she has been active in the Si View Park Board, Nelems Hospital Auxiliary, Babe Zaharias Cancer Chapter, National Secretaries Association, Business & Professional Women, Puget Sound Governmental Conference, Snohomish Basin Coordinating Committee, and Washington State Grange. She and her husband, James M. North, have lived in the Snoqualmie Valley for 30 years.



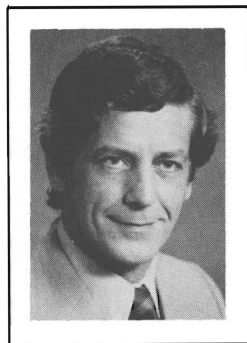
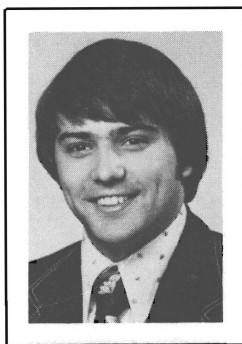
# REPRESENTATIVES

**O'BRIEN, JOHN L., (Democrat)** Representative from the 35th District of King County, is serving his 18th term. Caucus Chairman 1951, Minority Floor Leader 1953, Speaker of the House from 1955 to 1962. Minority Leader 1967-1971 and Speaker Pro Tempore 1973-1977. Graduate of business college, attended Western Institute of Professional Accounting and is a CPA. Past president and member of Executive Committee of National Conference of State Legislative Leaders. Member, Eagles, Knights of Columbus, Washington Athletic Club, and Rainier Chamber of Commerce. He and his wife, Mary, have six children.



**OLIVER, CLAUDE (Republican)** Representative from the 8th District comprising Benton and Yakima (part) Counties, serving his first term. Born in 1946 in Yakima. Raised in the Moxee, Yakima County, area. U.S. Army veteran. B.A., Central Washington State College, in political science—business/economics. Bank loan officer—assistant manager, Tri-Cities area. He and his wife, Diane, have one daughter.

**OWEN, BRAD (Democrat)** Representative from the 24th District comprising Clallam, Mason, Jefferson and part of Thurston Counties, is serving his first term in the House. At 26, he is a small businessman in Shelton with partnerships in Aberdeen and Hoquiam and is on the Shelton City Commission. Brad and his wife, Nancy, three daughters and son, adopted from Korea, live in Shelton.



**PARDINI, A. J. (BUD) (Republican)** From the 6th District, Spokane County, is serving his fifth term. Pardini is a bank loan officer. Active in numerous civic, educational and political activities. Has served on Social & Health Services, Commerce, Insurance, Revenue, Ways & Means and Rules Committees. Also served in various Republican leadership roles. He and his wife, Donna, have three daughters.

# REPRESENTATIVES



**PARIS, WILLIAM N. (Republican)** Representative from the 18th District comprising Cowlitz and northwest Clark Counties, is serving his fourth term. Born in 1927 in Bartlesville, Oklahoma, he has served as the Senior Minister of Calvary Community Church in Longview for 18 years. Paris has been appointed to several Boards and Committees both on the local and state level. He and his wife, Naomi, have three daughters.

**PATTERSON, E. G. "PAT" (Republican)**

Representative from the Ninth District, serving his third term. Minority Whip. A native of Pullman, Washington, Army officer veteran of WW II. Graduate of Washington State University, B.A. Political Science 1946. Served as State Adjutant Quartermaster, VFW, and for 25 years, Director of WSU's Alumni Relations Scholarship and Development Fund, Graduate Records, and Legislative Consultant. Member, Pullman Chamber of Commerce and VFW. He and his wife, Maxine, have seven children.

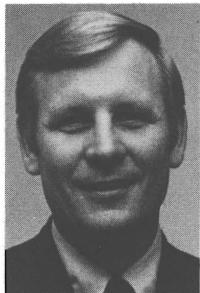


**PEARSALL, CATHY (Democrat)**

Representative from the 29th District, South East part of Pierce County. Serving first term. Born in 1932 in Tacoma, University of Washington School of Education, (Home Economy); School of Business Administration. Owner-Manager of Custom Drapery Shop. She and her husband, Ralph, a disability retired fireman, have two sons, Joe and Rod.

**POLK, WILLIAM M. (Republican)**

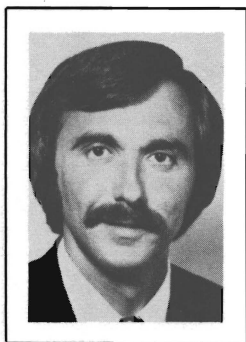
Chairman of the Republican Caucus is from the 41st District in King County, serving his fourth term. Born in 1935 in Cleburne, Texas, raised in Haddonfield, New Jersey, a graduate of Cornell University with a Bachelor of Architecture. He is a principal in the architectural firm Waldron, Pomeroy, Polk and Smith, a member of the American Institute of Architects, College Club, Director of Metropolitan Board YMCA, Ryther Child Center and is Director of Cornish School for Allied Arts. He, his wife, Karla, and three children, Lucy, Beth and Andy, live on Mercer Island.





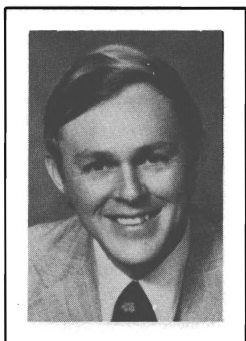
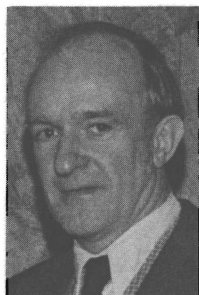
# REPRESENTATIVES

**PRUITT, PAUL (Democrat)** Representative from the 34th District, King County serving his first term. Born in Shelton, Nebraska he attended the University of Puget Sound and Yale Divinity School. President of Neighborhood Health Centers of Seattle and on the board of West Seattle Community Council. He and his wife Mary Margaret and their four children, live in West Seattle.



**SALATINO, JAMES E. (Democrat)** Representative from the 27th District in Pierce County. Elected in 1976, is now serving his first term in the House. Born in 1949 in Tacoma. Graduate of the University of Puget Sound. Currently a teacher at Stadium High School in Tacoma.

**SANDERS, PAUL (Republican)** Representative from the 48th District, King County. Appointed to the 44th Legislature. Active in Bellevue Republican organizations since 1971; Precinct Committeeman; 48th District Platform Committee, Chairman-elect, 1976. Active in various community organizations, including PTA's, Boy Scouts, Little League. Boeing Company executive for 20 years. He and his wife, Helen, have four children.



**SCHMITTEN, ROLLAND A. "ROLLIE" (Republican)** Representative from the 12th District is serving his first term. Born in Wenatchee in 1944. Employed as a resource manager in the forest products industry. A graduate of Washington State University in forestry, has served as a U.S. Marine Corps officer in Vietnam, on Cashmere City Council and Chelan County Port Commission. He and his wife, Barbara, have three children, Jennifer, Heidi, and Rollie, Jr.

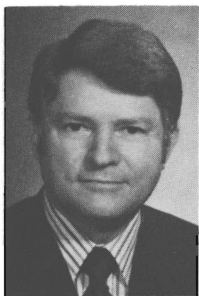
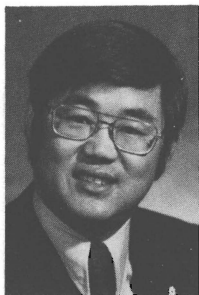
# REPRESENTATIVES



**SHERMAN, MARION KYLE (Democrat)**

Representative from the 47th District is serving her second term. Majority Caucus Vice Chairman. Board member of Washington Committee on Consumer Interests, Maple Valley Chamber of Commerce, Citizens for the Improvement of Nursing Homes, on National Panel of Consumer Arbitrators for Better Business Bureau, member Judicial Article Task Force, League of Women Voters. University of Washington graduates, she and her husband, Leonard, have two children.

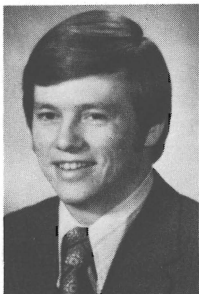
**SHINODA, PAUL Y. (Republican)** Representative from the 39th District. Owner and President of Shinoda Floral Inc. [a wholesale greenhouse firm], graduate of the University of California, Snohomish City Councilman, Representative to the Puget Sound Council of Governments and member of its Executive Board. A member of First Baptist Church of Snohomish, Vice-President of Snohomish Chamber of Commerce, Shinoda is married to Barbara; has one daughter, Kimi Anne.



**SHINPOCH, ALBERT N. "BUD" (Democrat)**

Representative from the 11th District, comprising part of Renton and Kent, King County, is serving his fourth term. Born in Council Hill, Oklahoma. Past President Renton Association for Handicapped Children. Member, Greater Kent Chamber of Commerce, member of Region IV Department of Social and Health Services Advisory Committee. Manager, the Boeing Company. Bud and his wife, Barbara, have two daughters and one granddaughter.

**SMITH, RICK (Democrat)** Representative from the 23rd District of Kitsap County is serving his third term. Born in 1942 in Portland, Oregon. A Silverdale attorney, served four years as Legislative Assistant to Congressman Floyd V. Hicks. Attended Olympic Community College in Bremerton and graduated from the University of Washington with a B.A. in political science. He received a law degree from the Amer. Univer. in Wash., D.C. He and his wife, Janice, their daughter, Heather and new son, Erin, live in Silverdale.



# REPRESENTATIVES

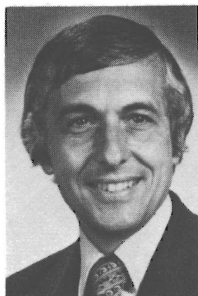
**SOMMERS, HELEN (Democrat)** Representative from the 36th District in Seattle, serving her third term. Earned B.A. and M.A. degrees from University of Washington. Employed by King County Council. Member, League of Women Voters and National Organization for Women. Board member, Easter Seal Society. Foundation member, Pacific Science Center.



**STRUTHERS, GENE (Republican)** Representative from the 16th District comprising Walla Walla, Franklin and a small part of Columbia Counties. Elected to the House of Representatives in November of 1976 he will be serving his first term. Born in 1924 in Walla Walla. He attended Whitman College. He is a widower with four grown children.



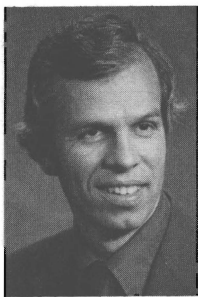
**TALLER, JOE A. (Republican)** Representative from the 36th District of King County. He is serving his first term in the House. Born in 1933 in Seattle. Graduate of the University of Washington in Business Administration. He and his wife, Robin, have lived in the District for 26 years and have three children.



**THOMPSON, ALAN (Democrat)** Representative from the 18th District comprising Cowlitz and Clark Counties, is serving his seventh term. Born in 1927 in Geneva, Iowa. Served in the Navy. Attended University of Nebraska and University of California, Berkeley, and has a B.A. degree. He is the Publisher of two weekly newspapers: the *Cowlitz County Advocate* and the *Lewis County News*. He and his wife, Barbara, have four sons.



# REPRESENTATIVES



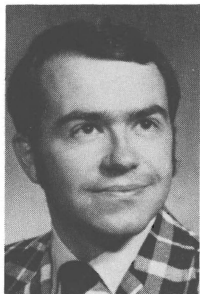
**TILLY, EARL F. (Republican)** Representative from the 12th District, is serving his third term and is Minority Organization Leader. He is 42 years old and a Wenatchee businessman. President of Tilly Equipment, Inc., a farm and orchard equipment dealer serving North Central Washington. A graduate of the University of Washington in Business Administration, member of the Wenatchee Rotary Club, The Wenatchee Valley College Foundation, and Wenatchee Grace Lutheran Church. He and his wife, Barbara, have three children, Kristen, Bart and Shannon.

**VALLE, GEORGETTE (Democrat)** Representative of the 31st Legislative District of King County. Born in Blue Earth, Minnesota. Graduate of University of Minnesota with a B.S. degree in Occupational Therapy. Currently serving her fourth term in the legislature. She and her husband, Odd, a dentist, have two children, Peter and Christine.



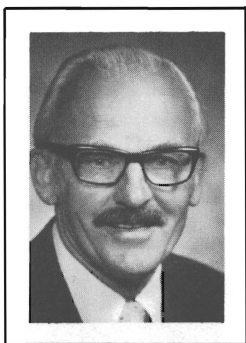
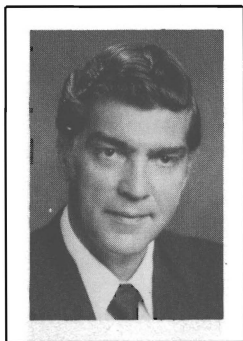
**VROOMAN, JERRY L. (Democrat)** Representative from the 40th District comprising San Juan, Skagit, and the eastern part of Whatcom Counties. Born in 1941 in Portland, Oregon. Graduate of Skagit Valley Community College and Western Washington State College with a B.A. in Political Science. He and his wife, Ursula, have two daughters, Angela and Michelle.

**WALK, GEORGE W. (Democrat)** Representative from the 25th District which includes north central Pierce and part of King Counties. Born in 1949 in Puyallup, attended Puyallup Public Schools and earned B.A. and M.A. degrees from Western Washington State College. A teacher, he resides in Puyallup. Serving his first term.



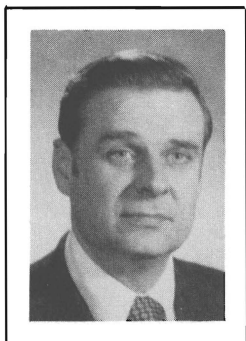
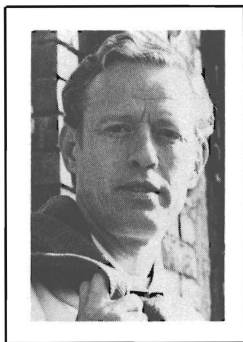
# REPRESENTATIVES

**WARNKE, FRANK J. (Democrat)** Representative from the 30th District, South King County. Served in the 1965-67 and 1973-75, 75-77 sessions. Born in Havre, Montana in 1933. Studied Political Science at Central Washington State College and the University of Washington. Employed as Executive Director of the Public School Employees of Washington. Married and has two children.



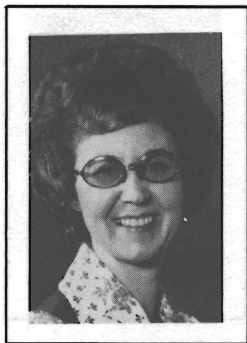
**WHITESIDE, JIM (Republican)** from the Fourteenth District of Yakima. Native of Washington State, born in Tacoma, raised in Seattle, represents Yakima County. Attended U. of W. and obtained B.A. degree from W.S.U. after Naval Service. He has operated a cleaning business in Yakima for 22 years. He and his wife, Shirley, have five children.

**WILLIAMS, ALVIN C. (Democrat)** Representative from District 32 of King County, is serving his fifth term. Born in 1930 in North Dakota. He served with U.S. Marine Corps and is a graduate, University of Washington, School of Architecture and Urban Planning, is an architect. Member of the Seattle Design Commission and Ballard Avenue Historic District Board. Past Chairman, Lake Union Advisory Commission and Past President of the Wallingford Community Council.



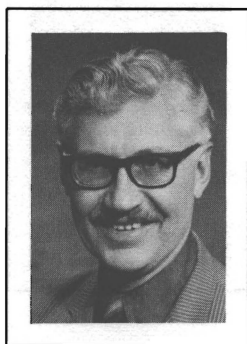
**WILSON, SIMEON R. "SIM" (Republican)** Representative from the 10th District of northwest Snohomish County and Island County, elected in 1972 to his first term, re-elected, 1974, 1976. Born in Hood River, Oregon, in 1927. Attended Everett Community College, B.A., Washington State University, M.F.A., University of Washington. Served in the U.S. Navy 1945-46, 1951-54. Publisher of the *Marysville Globe* and *Arlington Times*. He and his wife, Betty, have two children.

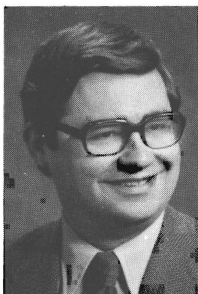
# REPRESENTATIVES



**WINSLEY, SHIRLEY J. (Republican)** Representative from the 28th District, Pierce County, comprising the communities of Lakewood, University Place, Fircrest, Steilacoom, Tillicum, and Day Island. Appointed to the House in 1974, is now serving her first elective term. Born in Fosston, Minnesota, moved to Tacoma in 1947. Attended Tacoma Community College, Pacific Lutheran University. A certified property tax appraiser, is presently Manager of the Lakewood Area Chamber of Commerce, Chairman of the Fircrest Planning Commission, Treasurer of the Pierce County Health Council. She and her husband, Gordon, have a son and a daughter.

**ZIMMERMAN, HAROLD S. (HAL) (Republican)** Representative from the 17th District (Klickitat, Skamania, and part of Clark Counties) is serving his sixth term. Born in 1923 in Valley City, North Dakota. Graduate, University of Washington with a B.A. degree, is Editor-Publisher of *Post Publications*, Camas. Served in the Air Force in World War II. Past President, Washington Newspaper Publishers Association. Member, Sigma Chi, United Methodist Church, Kiwanis, Grange, Young Life Council, Youth Out-reach Board, Regional Social & Health Services Board. He and his wife, Judy, have three children, Karen, Steve and Julie.





**FOSTER, DEAN R. (Democrat)** Chief Clerk of the House of Representatives serving his third term. Worked as an employee in the Senate from 1959-1965 and in the House in 1972. Born in 1941 in Yakima. Attended Western Washington State College and graduated from University of Washington with a degree in Political Science. Served in the United States Air Force as an Intelligence Officer. He has three sons, David, Mike and Scott.

**YOUNG, ROSS (Democrat)** Sergeant at Arms of the House of Representatives serving his second term. Worked as an employee in the Senate 1971-72 and in the House 1973-1974. Born in 1929 in Cle Elum. Attended Central Washington State College. Served 20 years in the United States Air Force, retiring as a Senior Master Sergeant in 1969. He and his wife, Mary, have three of their seven children living with them in Olympia.

