



Washington State Legislature

*Pictorial
Directory*

42nd Session

1 9 7 1



Daniel J. Evans Governor

Daniel J. Evans (Republican) is serving his second term as Governor of the State of Washington, having been re-elected in 1968 by a larger percentage margin than any incumbent governor in the state in 32 years.

Before becoming the state's chief executive, Evans was a partner in a Seattle civil and structural engineering firm. He is a civil engineering graduate of the University of Washington, earning his degrees (a B.S. in 1948 and an M.S. in 1949) between tours of duty as a Navy officer in the Second World War and the Korean War.

Evans, a 45-year-old native of Seattle, was first elected to public office in 1956 as a state representative from King County's 43rd District. He served until his election as Governor in 1964. During the 1961 and 1963 sessions, he was the Republican floor leader.

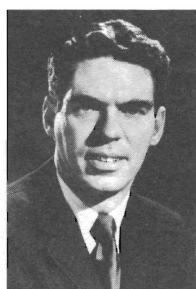
In the past four years, Evans has held leadership posts in the Western Governors' Conference, the National Governors' Conference and the Republican Governors' Association. Highlighting his activities at the national level was his selection as keynote speaker for the 1968 Republican National Convention.

Evans is married to the former Nancy Ann Bell of Spokane. They have three children: Daniel, Junior, 10, Mark, 7, and Bruce, 4.

ELECTED OFFICIALS



John A. Cherberg
Lieutenant Governor



A. Ludlow Kramer
Secretary of State



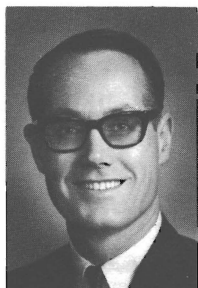
Robert S. O'Brien
State Treasurer



Robert V. Graham
State Auditor

ELECTED OFFICIALS

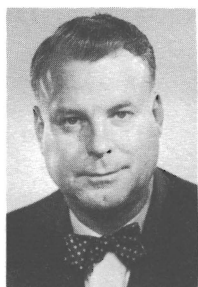
Slade Gorton
Attorney General



Louis Bruno
**Superintendent
of Public Instruction**



Bert Cole
Commissioner of Public Lands



Karl V. Herrmann
Insurance Commissioner

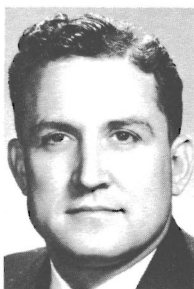


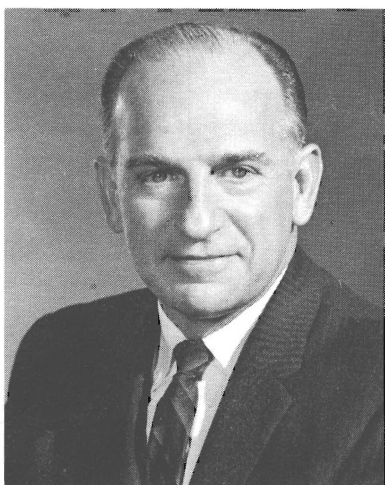
TABLE OF CONTENTS

State Elected Officials	1
Introduction	4
President of Senate	5
Senate Roster	6
Senate Biographies	7
Speaker of House	21
House of Representatives Roster	22
House of Representatives Biographies	24

INTRODUCTION

This "42nd Session Pictorial Directory of the Washington State Legislature" contains pictures and biographical material about the nine statewide elected officials and members of the 1969 Legislature. This Directory is prepared by the Senate and the House of Representatives to assist those interested in becoming better acquainted with their Legislators and the Legislative processes of our state. These are the men and women who have been elected to provide our state with the laws that best serve the people.

SENATORS OF THE STATE OF WASHINGTON



John Cherberg
Lieutenant Governor
President of the Senate

John Andrew Cherberg (Democrat) is serving his eighth session as President of the Senate and Ex-Officio Chairman of the Senate Rules Committee. He was first elected Lieutenant Governor in 1956, and re-elected in 1960, 1964 and 1968. Born in 1910 in Pensacola, Florida, he received a life teaching diploma from the University of Washington in 1934. Formerly a teacher, he was head football coach at the University of Washington prior to his election. He and his wife, Betty, have three children.

ROSTER OF MEMBERS

State Senate

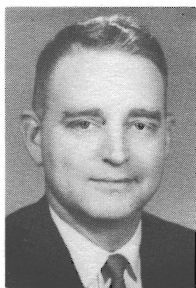
49 MEMBERS (29 DEMOCRATS, 20 REPUBLICANS)

<u>DIST.</u>	<u>PARTY</u>	<u>NAME</u>	<u>ADDRESS</u>
48	R	ANDERSEN, JAMES A.	3008 98th N.E., Bellevue 98004
42	R	ATWOOD, R. FRANK	220 Bhm. Nat'l Bank Bldg., Bellingham 98225
19	D	BAILEY, ROBERT C.	P.O. Box 146, South Bend 98586
8	R	CANFIELD, DAMON R.	1368 Upland Dr., Sunnyside 98944
41	R	CLARKE, GEORGE W.	1111 Hoge Bldg., Seattle 98104
33	D	CONNOR, FRANK	3201 S. Massachusetts, Seattle 98114
5	D	COONEY, JOHN L.	N. 4403 Adams, Spokane 99205
4	D	DAY, WILLIAM S.	2721 E. Sprague, Spokane 99202
11	D	DONOHUE, HUBERT F.	Route 2, Box 13, Dayton 99328
45	D	DORE, FRED H.	1424 Washington Bldg., Seattle 98101
47	D	DURKAN, MARTIN J.	404 Olympic Nat'l Life Bldg., Seattle 98104
10	R	ELICKER, CHARLES W.	344 Wyatt Way, Winslow 98110
37	D	FLEMING, GEORGE	1612 Grand Ave., Seattle 98122
49	D	FOLEY, FRANK W.	3924 Wauna Vista Dr., Vancouver 98661
32	D	FRANCIS, PETE	4324 Dayton No., Seattle 98103
26	D	GARDNER, BOOTH	520 N. Stadium Way, Tacoma 98403
39	D	GISSBERG, WILLIAM A.	10928 Maple Lane, Lake Stevens 98258
34	D	GREIVE, R. R. BOB	4444 California Ave. S.W., Seattle 98116
6	R	GUESS, SAM C.	W. 408 33rd Ave., Spokane 99203
17	D	HENRY, AL	Rio Vista, White Salmon 98672
31	D	HERR, GORDON	10617 21st S.W., Seattle 98146
1	R	HOLMAN, FRANCIS E.	920 Logan Bldg., Seattle 98101
9	R	HUNTLEY, ELMER C.	Thornton 99176
16	D	JOLLY, DAN	Box 185, Connell 99326
3	D	KEEFE, JAMES E.	412 W. Glass Ave., Spokane 99205
25	D	KNOBLAUCH, REUBEN A.	P.O. Box 306, Sumner 98390
22	R	LEWIS, HARRY B.	2019 Clairmont Circle, Olympia 98501
29	D	MCCUTCHEON, JOHN T.	P.O. Box 387, Steilacoom 98388
12	R	MCDUGALL, BOB	No. 2 Horan Road, Wenatchee 98801
38	D	MARDESICH, AUGUST P.	4712 Mermont Dr., Everett 98201
14	R	MATSON, JIM	Route 2, Box 730, Selah 98942
21	R	METCALF, JACK	7421 46th West, Mukilteo 98275
36	R	MURRAY, JOHN S.	8 W. Roy St., Seattle 98119
28	R	NEWSCHWANDER, CHARLES E.	2140 Bridgeport Way, Tacoma 98466
20	D	ODEGAARD, GARY M.	P.O. Box 27, Onalaska 98570
40	D	PETERSON, LOWELL	Box 249, Concrete 98237
44	R	PETERSON, TED G.	2345 N.W. Blue Ridge Dr., Seattle 98177
35	D	RIDDER, ROBERT C.	5809 S. Roxbury, Seattle 98118
24	D	SANDISON, GORDON	P.O. Box 967, Port Angeles 98302
46	R	SCOTT, GEORGE W.	2530 N.E. 105th Place, Seattle 98125
30	R	STENDER, JOHN H.	19039 Pacific Highway So., Seattle 98189
27	D	STORTINI, JOE	1623 Firlands Dr. Tacoma 98405
18	D	TALLEY, DON L.	1583 Mt. Pleasant Road, Kelso 98626
7	R	TWIGG, ROBERT W.	817 Northtown Office Bldg., Spokane 99207
23	D	WALGREN, GORDON L.	245 Fourth Street Bldg., Bremerton 98313
13	D	WASHINGTON, NAT	42 C Street N.W., Ephrata 98823
43	R	WHETZEL, JONATHAN	1411 4th Ave. Bldg., Seattle 98101
2	D	WILSON, BRUCE A.	P.O. Box 553, Omak 98841
15	R	WOODALL, PERRY B.	P.O. Box 507, Toppenish 98948

SENATORS

ANDERSEN, JAMES A. (Republican)

Senator from the 48th District of King County, served four sessions in the House and is serving his third session in the Senate. Born in 1924 in Auburn. Graduate, University of Washington with a B.A. degree in Political Science and a J.D. degree in law. A former King County Deputy Prosecuting Attorney, is now a lawyer in private practice. Combat infantryman during World War II. He and his wife, Billiette, have two children.



ATWOOD, R. FRANK (Republican)

Senator from the 42nd District of Whatcom County, is serving his fifth session. Born in 1926 in Massachusetts. Graduate, WSU with a B.A. in Political Science and University of Washington Law School with LL.B., is an attorney. Veteran of World War II, Major in the Army Reserve. Member, Lions, Elks, YMCA; past member, Bellingham City Council. He and his wife, Marie, have three children. He is the Caucus Chairman for the Republicans in the Senate and past Minority Floor Leader 1969 and 1970 sessions.

BAILEY, ROBERT C. (BOB) (Democrat)

Senator from the 19th District comprising Pacific and part of Grays Harbor counties, served three sessions in the House and is serving his eighth session in the Senate. Born in 1918 in Raymond. Is a printer by trade, member of the Typographical Union, and formerly published a weekly newspaper. Served in the Navy during World War II. Member, Eagles, VFW, American Legion, Masons, and Boy Scout Council. He and his wife, Lee, have one son.



CANFIELD, DAMON R. (Republican)

Senator from the 8th District comprising parts of Yakima and Benton counties. Served seven sessions in the House and is serving his third session in the Senate. Born in 1897 in Arkansas. Attended, University of Washington and Graduate, Washington State University (magna cum laude), is a retired Educator, Fruit and Cattle Rancher. Past Master, Grange; President, Central Washington Fair; member, Methodist Church, Masons, American Legion, WW I Veterans. He and his wife, Marie, have two children.

SENATORS



CLARKE, GEORGE W. (Republican) Senator from the 41st District of King County, served two sessions in the House and is serving his first session in the Senate. Born in Perry, Iowa, he is an attorney. Served as a naval officer in World War II. Served 20 years, Mercer Island School Board; Member, Seattle Chamber of Commerce, and Rotary. He and his wife, Helen, have three children.

CONNOR, FRANK (Democrat) Senator from the 33rd District of King County, served three sessions in the House and will be serving his eighth session in the Senate. Born in 1916 in Seattle. Graduate, O'Dea High School, is a Realtor. Member, Eagles, Knights of Columbus. He is married and his wife's name is Arlene.



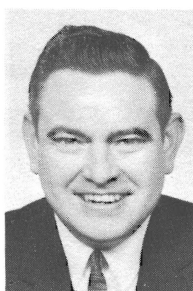
COONEY, JOHN L. (Democrat) Senator from the 5th District of Spokane County, served two sessions in the House and is serving his seventh session in the Senate. Born in 1915 in Condon, Oregon. Graduate, Gonzaga Law School, is a practicing attorney. Member, Eagles, Elks, Grange, Knights of Columbus, and Garland Businessmen's Association. He and his wife, Marguerite, have four children.

DAY, WILLIAM S. (BILL) (Democrat) Senator from the 4th District of Spokane County, served five sessions in the House and is serving his second session in the Senate. Speaker of the House in 1963. Born in 1923 in Rockford, Illinois. Graduate, Palmer College of Chiropractic in Davenport, Iowa, is a Chiropractor. Served in the Army during WW II. Member, Kiwanis, Veterans of Foreign Wars. He and his wife, Lucy, have five children.



SENATORS

DONOHUE, HUBERT F. (Democrat) Senator from the 11th District comprising Asotin, Columbia, Garfield and Walla Walla counties. He is serving his second session. Born in 1921 in Dayton. Attended, Washington State University, is a farmer. Member, Eagles, Elks, American Legion, Washington Wheat Association, Farm Bureau, Christian Church, Washington Cattlemen's Association. He and his wife, Evelyn, have four sons.



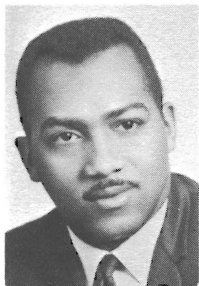
DORE, FRED H. (Democrat) Senator from the 45th District of King County, served seven sessions in the House and is serving his seventh session in the Senate. Served as Interim Committee Chairman of Education Committee (1962-64). Chairman Senate Appropriations Committee for the past six years. Attended, Seattle University; graduate, Georgetown Foreign Service School and Georgetown Law School, is an attorney. He and his wife, Mary, have five children.

DURKAN, MARTIN J. (Democrat) Senator from the 47th District of King County. Served one session in the House and is serving his seventh session in the Senate. Born in 1924 in Great Falls, Montana. Graduate, University of Washington Law School, is an attorney. Veteran of WW II. He and his wife, Lorraine, have seven children.

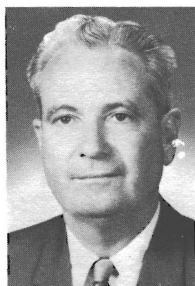


ELICKER, CHARLES W. (Republican) Senator from the 10th District comprising Island and part of Kitsap counties. Served one session in the House and is serving his second session in the Senate. Born in 1926 in Pittsburgh. Graduate, University of Washington with LL.B. and University of Michigan with LL.M. degrees, is an attorney and owner of a sanitarium. Was in the Naval Reserve for 20 years. He is a former chairman of the local school board. Member, Delta Tau Delta, Rotary, College Club, and American Legion.

SENATORS



FLEMING, GEORGE (Democrat) Senator from the 37th District of King County, served one session in the House and serving his first session in the Senate. Born in 1938 in Dallas. Graduate, U of W with a B.A. in Business Administration, he is employed as a Communication Consultant at Pacific NW Bell Telephone. Member, State Law and Justice Committee, State Council on Electoral Reform, State Urban, Racial Disadvantaged Advisory Committee, Salvation Army Board, Children Home Society NW Branch, Pacific Science Center Board and Central Area Motivation Program. He and his wife, Tina, have one daughter.



FOLEY, FRANK W. (Democrat) Senator from the 49th District of Clark County, is serving his eighth session. Born in 1913 in Spokane. Graduate, Washington State University with a B.A. degree and Gonzaga Law School with LL.B., is an attorney. Was a Lt. Col. in the Army during WW II. Member, American Legion, Elks. He is married and his wife's name is Betty.



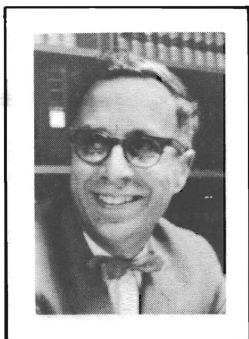
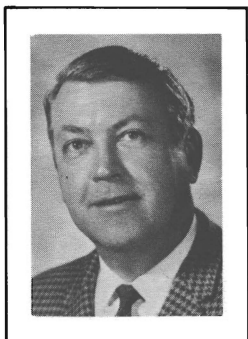
FRANCIS, PETE (Democrat) Senator from the 32nd District of King County, served one session in the House, appointed to the Senate in 1969 and elected in 1970. Born in 1934 in Seattle. Graduate, Stanford University with a B.A. in Political Science and Stanford Law School with a J.D. degree, is an attorney. President, Green Lake Chamber of Commerce; Elder, Woodland Park Presbyterian Church; member, Municipal League, Lions, YMCA. He and his wife, Elva, have two boys.



GARDNER, BOOTH (Democrat) Senator from the 26th District of Pierce County. Born in 1936 in Tacoma. Graduate of University of Washington with a B.A. and Harvard with a Masters in Business Administration, he is Director of The School of Business Administration at University of Puget Sound. Founder/Director, Central Area Youth Association, Director, Hilltop Central Learning Center; Member, Model Cities Advisory Board. He and his wife, Jean, have two children.

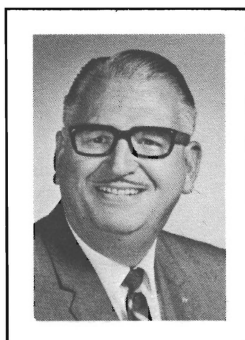
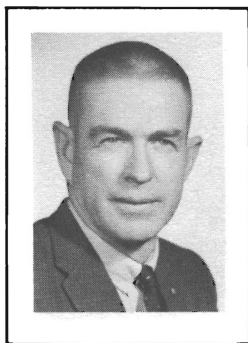
SENATORS

GISSBERG, WILLIAM A. (Democrat) Senator from the 39th District of Snohomish County, is serving his tenth session. Chairman of Judiciary Committee and Senate Majority Whip. Born in 1922 in Everett. Graduate, University of Washington, is an attorney. Member, Moose, Elks. He and his wife, Helen, have five children.



GREIVE, R. R. (BOB) (Democrat) Senator from the 34th District of King County, is serving his fourteenth session. Born in 1919 in West Seattle. Attended, Seattle University and University of Washington, and Graduate, Miami University School of Law, he is an attorney. Served in the Coast Guard during WW II. Member, Lions, American Legion. He and his wife, Barbara Ann, have six children.

GUESS, SAM C. (Republican) Senator from the 6th District of Spokane County, is serving his fifth session. Born in 1909 in Greenwood, Mississippi. Graduate, University of Mississippi with B.S. in Civil Engineering. Served with the First U.S. Army in Europe. Member, Sigma Nu fraternity. He and his wife, Dorothy, have two children.



HENRY, AL (Democrat) Senator from the 17th District comprising Klickitat, Skamania, and part of Clark counties. Served four sessions in the House and is serving his eighth session in the Senate. Born in Ness County, Kansas. Attended, business school, is a Telephone Company Executive. Served in WW II and National Guard. Past President, Eagles; member, Elks. He and his wife, Ann, have three children.

SENATORS



HERR, GORDON (Democrat) Senator from the 31st District of King County, served one session in the House and is serving his fifth session in the Senate. Born in 1926 in Seattle. Attended, University of Washington, is an Association executive. He and his wife, Patricia, have five children.

HOLMAN, FRANCIS E. (Republican) Senator from the 1st District of King County, served one session in the House and is serving his second session in the Senate. Born in 1915 in Salt Lake City. Graduate, Stanford University with A.B., Oxford University with M.A., and Harvard Law School with LL.B., is a lawyer. Served in WW II and Korean War and as Mayor, Lake Forest Park; and as member, Shoreline School Board, Metro Council. Serves on Uniform Law Commission. He and his wife, Eloise, have three children.



HUNTLEY, ELMER C. (Republican) Senator from the 9th District comprising Whitman, Lincoln, and Adams counties, served five sessions in the House and is serving his third session in the Senate. Born in 1915 in St. John, Washington. Attended, Washington State University, is a farmer. Member, Masons, Methodist Church, Grange, Farm Bureau, Agricultural Commodity Groups, Chamber of Commerce. He is married and his wife's name is Necia.

JOLLY, DAN (Democrat) Senator from the 16th District comprising Franklin and part of Benton County, served four sessions in the House and is serving his first session in the Senate, being appointed January 1, 1971. Born in 1907 in Douglas County, is a farmer. Officer, Washington State Grange. He and his wife, Harriet, have two married daughters.



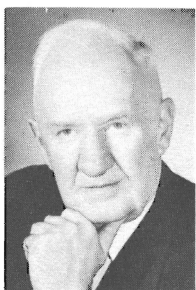
SENATORS

KEEFE, JAMES EDWARD (Democrat) Senator from the 3rd District of Spokane County, is serving his thirteenth session in the Senate. Born in 1908 in New York City. Graduate, Gonzaga High School, is employed as a sales manager. Member, Elks, Moose. He and his wife, Eileen, have two sons.



KNOBLAUCH, REUBEN A. (Democrat) Senator from the 25th District of Pierce County, served three sessions in the House and is serving his tenth session in the Senate. Born in 1914 in Sumner. Graduate, Sumner High School, is a retired farmer. Member, Veterans of Foreign Wars, American Legion, Elks, and Grange. He is unmarried.

LEWIS, HARRY B. (Republican) Senator from the 22nd District of Thurston County, served two sessions in the House and is serving his fourth session in the Senate. Born in 1927 in Pittsburgh. Attended, University of Puget Sound, and Graduate, University of Washington. He is owner and manager of Wood Fabricators, Inc. Served in the Army during WW II. Member, Society of American Foresters, Elks, Phi Delta Theta, American Legion. He and his wife, Jane, have three children.



McCUTCHEON, JOHN T. (Democrat) Senator from the 29th District of Pierce County, served one session in the House and is serving his thirteenth session in the Senate. Born in 1892 in Tacoma. Attended, University of Washington, and Graduate, Indiana University Law School, is a lawyer. Member, Eagles, and Grange. He has three children.

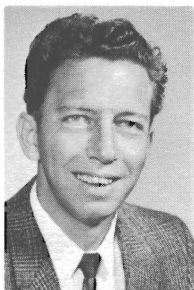
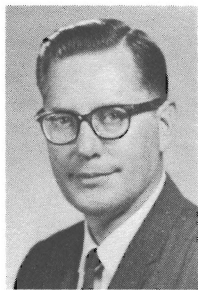
SENATORS



McDOUGALL, R. D. (BOB) (Republican) Senator from the 12th District comprising Chelan and Douglas counties, served four sessions in the House and is serving his second session in the Senate. Born in 1924 in Cashmere. Graduate, Wenatchee Valley College and Washington State University, is a fruit grower and warehouse manager. Served in the Navy in WW II. Member, Elks, Masons, American Legion, and Grange. He and his wife, Jackie, have three sons.

MARDESICH, AUGUST P. (Democrat)

Senator from the 38th District of Snohomish County, served seven sessions in the House and is serving his fifth session in the Senate. Born in 1920 in San Pedro, California. Graduate, University of Washington Law School, is an attorney and commercial fisherman. He and his wife, Rosemary, have six children.



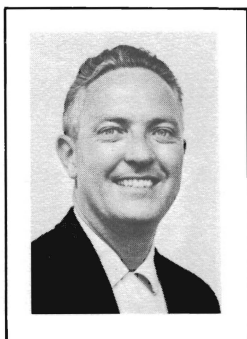
MATSON, JIM (Republican) Senator from the 14th District in Yakima County, is serving his second session. Born in 1927 in Yakima. Attended, Whitman College and Yakima Valley College, is in the fruit growing, packing, and shipping business. Veteran of WW II. Member, Elks, Kiwanis, and Chamber of Commerce. He and his wife, Judi, have five children.

METCALF, JACK (Republican) Senator from the 21st District of Snohomish County. Served two sessions in the House and is serving his third session in the Senate. Born in Marysville. Graduate, Pacific Lutheran University with B.A., is a high school teacher of history, mathematics, and government. Member, PTA, Edmond's Rod and Gun Club, Lynnwood Kiwanis, Volunteers of America Board. He and his wife, Norma, have five daughters.



SENATORS

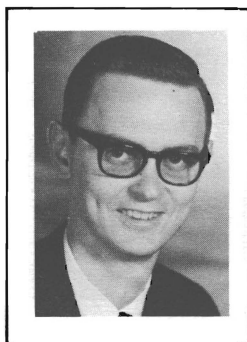
MURRAY, JOHN S. (Republican) Senator from the 36th District of King County, served two sessions in the House and is serving his first session in the Senate. Born in 1925 in Albany, Missouri. Attended, Stanford, and Graduate, University of Washington, is owner and publisher of the *Queen Anne News*. Combat Engineer in the Army. Member, Methodist Church. He and his wife, Virginia, have four children.



NEWSCHWANDER, CHARLES E. (Republican) Senator from the 28th District of Pierce County, served four sessions in the House and is serving his second session in the Senate. Born in 1920 in Tacoma. Attended, University of Puget Sound and Graduate, University of Oregon Dental School, is a dentist. Served in WW II and Korean War. Member, Masons, Scottish Rite, and Lions. He and his wife, Emma, have four children.



ODEGAARD, GARY M. (Democrat) Senator from the 20th District comprising Lewis and part of Grays Harbor counties, is serving his second session. Born in 1940 in Bellingham. Graduate, Western Washington State College with B.A. in Education, Graduate work at U of W, is a teacher. Member, Alpha Grange, Centralia College Education Association, Lewis County Pomona Grange, Onalaska Lions, and International Reading Association. He and his wife, Kay, have two sons.



PETERSON, LOWELL (Democrat) Senator from the 40th District comprising San Juan and Skagit counties, he is serving his third session. Born in 1921 in Pateros, Washington, is an oil distributor. Served in the Navy in WW II. Member, American Legion, Eagles and Elks. He and his wife, Ruth, have three children.



SENATORS



PETERSON, TED G. (Republican) Senator from the 44th District of King County, is serving his seventh session. Born in 1904 in Seattle. Attended, University of Washington, is President of a wholesale equipment and supply house. Member, Masons, Shrine, Lions International, and Elks. He and his wife, Ruth, have two children.

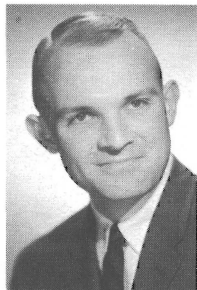
RIDDER, ROBERT (BOB) (Democrat)

Senator from the 35th District of King County, is serving his third session. Born in Bellingham. Graduate, University of Washington with B.S. degree and graduate study at U of W and Seattle University, is vice-principal of Showalter Junior High School. Served in the infantry and medical corps. Community activities include church, Boys Club, Boy Scouts, American Legion, PTA, Kiwanis and political clubs. He and his wife, Ruthe, have five children.



SANDISON, GORDON (Democrat) Senator from the 24th District comprising Clallam, Jefferson, and Mason counties, served five sessions in the House and is serving his seventh session in the Senate. Born in 1919 in Auburn. Graduate, University of Washington, is an Insurance Broker and Realtor. Served in the Marines during WW II. Member, Elks, Eagles, VFW, Grange, American Legion, Alpha Tau Omega. He and his wife, Muriel, have five children.

SCOTT, GEORGE W. (Republican) Senator from the 46th District of King County, served one session in the House and is serving his first session in the Senate. Born in 1937 in Seattle. Graduate, Whitworth College with B.A. in Philosophy, University of Washington with M.A. in History, and is a teacher. Member, Masons, Municipal League, and Lions. He is married and his wife's name is Carol.



SENATORS

STENDER, JOHN H. (Republican) Senator from the 30th District of King County, is serving his fifth session. Born in 1916 in Montana. International Vice-President, Boilermakers and Blacksmiths International Union. Member, Eagles, and F.A.M. He and his wife, Ida, have four children.



STORTINI, JOE L. (Democrat) Senator from the 27th District of Pierce County, is serving his second session. Born in 1932 in Tacoma. Graduate, University of Puget Sound with B.A. in Education and Oregon State University with M.A. in Education, is a teacher and coach. Member, Italian Lodge, WEA, Bellarmine Boosters. He and his wife, Carol, have three children.



TALLEY, DON L. (Democrat) Senator from the 18th District comprising Cowlitz and Wahkiakum counties, is serving his eighth session. Born in 1918 in Tacoma. Graduate, high school, is employed as a Safety Supervisor for the Port of Longview. Served in the Navy during WW II. Member, Masons, Elks, Moose, Eagles, American Legion, and D.A.V. He and his wife, Delores, have four children.



TWIGG, ROBERT W. (Republican) Senator from the 7th District of Spokane County, is serving his third session. Born in Seattle. Graduate, Whitman College with A.B. degree and Gonzaga Law School, is a lawyer. Served in the U. S. Navy in WW II. He is married and his wife's name is Margaret.



SENATORS



WALGREN, GORDON LEE (Democrat) Senator from the 23rd District of Kitsap County, served one session in the House and is serving his second session in the Senate. Born in 1933 in Bremerton. Graduate, University of Washington with B.A. and J.D. degrees, is an attorney. Member, Elks, Eagles, Kiwanis, Masonic Orders, Delta Upsilon fraternity. Former Prosecuting Attorney, Kitsap County and Bremerton City Attorney. Holder, Freedoms Foundation Award. He and his wife, Sue, have two children.

WASHINGTON, NAT W. (Democrat) Senator from the 13th District comprising Grant and Kittitas counties. Served one session in the House and is serving his eleventh session in the Senate. Born in 1914 in Coulee City. Graduate, University of Washington Law School, is an attorney. Served in the Air Force in WW II. Member, Grange, Masonic Lodge. He and his wife, Wanda, have two sons.



WHETZEL, JONATHAN (Republican) Senator from the 43rd District of King County, served three sessions in the House and is serving his first session in the Senate. Born in 1927 in Pittsburgh. Graduate of Princeton University with B.A. (cum laude) and Harvard Law School with LL.B., is a lawyer and a businessman. Served in the Navy during World War II. He and his wife, Judith, have two sons.

WILSON, BRUCE A. (Democrat) Senator from the 2nd District comprising Okanogan, Ferry, Stevens and Pend Oreille counties, is serving his second session. Born in 1921 in Chicago. Graduate, Northwestern University with B.S. degree, is a newspaper publisher. Past President, Omak Chamber of Commerce; Past President, Okanogan County Historical Society; Director, Omak Stampede. He and his wife, Merilynn, have four children.



SENATORS

WOODALL, PERRY B. (Republican) Senator from the 15th District of Yakima County, served six sessions in the House and is serving his ninth session in the Senate. Born in 1912 in Buena. Graduate, Yakima Valley Junior College and University of Washington with LL.B., is a lawyer and farmer. Served in the Navy in WW II. Member, Elks, Eagles, American Legion, Grange, and Farm Bureau. He has one daughter, Patti.

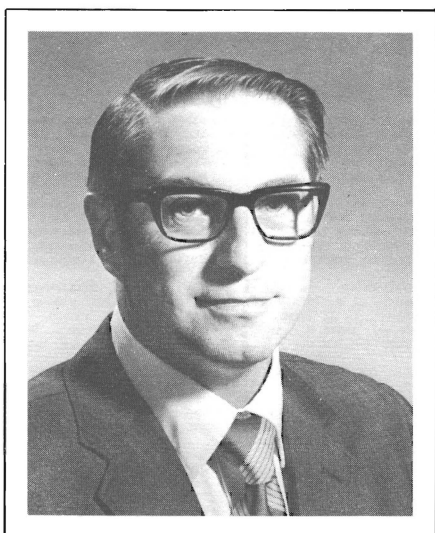


SNYDER, SIDNEY R. (Democrat) Secretary of the Senate, elected May 1969, and serving his second session. Former Assistant Chief Clerk and Acting Chief Clerk of the House. Born in 1926 in Kelso. Attended, Lower Columbia College, owns and operates a supermarket. Past President and Director of Washington State Food Dealers' Association; Member, Elks, Lions. He and his wife, Bette, have three children.



JOHNSON, CHARLIE (Democrat) Sergeant-at-Arms of the Senate serving his eighth session. A member of the House in 1951, he served as Sergeant-at-Arms of the House in 1955. Born in 1911 in Elko, Wyoming. He is a factory representative for Midland Laboratories. Member, Eagles, Elks, and Washington Athletic Club.

HOUSE OF REPRESENTATIVES OF THE STATE OF WASHINGTON



Thomas A. Swayze Jr.
Speaker of the House

Thomas A. Swayze, Jr. (Republican) is serving his first session as Speaker of the House. He represents the 26th District of Pierce County and is serving his fourth session. Born in 1930 in Tacoma. Graduate, University of Puget Sound and University of Washington Law School. He is an attorney. He and his wife, Marliss, have three children.

ROSTER OF MEMBERS

House of Representatives 99 MEMBERS (51 REPUBLICANS, 48 DEMOCRATS)

DIST.	PARTY	NAME	ADDRESS
26	D	ADAMS, A. A.	3418 Shorecliff Dr. N.E., Tacoma 98422
9B	R	AMEN, OTTO	Route 1, Box 48, Ritzville 99169
19	D	ANDERSON, ERIC O.	627 Grand Avenue, Hoquiam 98550
39	D	BACKSTROM, HENRY	516 Olympic Avenue, Arlington 98223
35	D	BAGNARIOL, JOHN	10450 61st Avenue S., Seattle 98178
30	R	BARDEN, PAUL	1112 South 168th, Seattle 98148
17	D	BAUER, ALBERT	13611 N.E. 20th Ave., Vancouver 98664
23	D	BECK, C. W. (RED)	2400 Beach Drive, Port Orchard 98366
8B	R	BENITZ, MAX E.	Route 2, Box 181, Prosser 99350
40	R	BERENTSON, DUANE L.	P.O. Box 426, Burlington 98233
46	R	BLAIR, SCOTT	8712 25th N.E., Seattle 98115
13	R	BLEDSE, STEWART	Route 3, Box 60-B, Ellensburg 98926
1	R	BLUECHEL, ALAN	12534 68th Avenue N.E. Kirkland 98033
29	D	BOTTIGER, R. TED	8849 Pacific Avenue, Tacoma 98444
12	D	BOZARTH, HORACE W.	Mansfield 98830
31	D	BRADLEY, H. STAN	8114 7th Ave. S.W., Seattle 98106
25	D	BROUILLET, FRANK B.	619 7th Avenue S.W., Puyallup 98371
1	R	BROWN, ARTHUR C.	16020 Densmore N., Seattle 98133
34	D	CECCARELLI, DAVE	3823 42nd S.W., Seattle 98116
19	D	CHARETTE, ROBERT L.	P.O. Box 63, Aberdeen 98520
44	D	CHARNLEY, DONN	19344 11th Ave. N.W., Seattle 98177
33	D	CHATALAS, WILLIAM (BILL)	4803 42nd Ave. South, Seattle 98118
24	D	CONNER, PAUL H.	Route 3, Box 472, Sequim 98382
22	R	CONWAY, FLOYD	Route 11, Box 340, Olympia 98501
11B	R	COPELAND, THOMAS L.	Route 3, Walla Walla 99362
40	R	COSTANTI, D. JAMES	1215 Doser Street, Edison 98246
30	R	CUNNINGHAM, NORWOOD	750 Alvord Avenue, Kent 98031
12	R	CURTIS, ROBERT (BOB)	P.O. Box 0188, East Wenatchee 98801
32A	D	DOUTHWAITE, G. K. (JEFF)	5518 31st N.E., Seattle 98105
36	R	EIKENBERRY, KENNETH O.	Suite 500, 3rd & Lenora Bldg., Seattle 98121
42	R	FARR, CASWELL J.	1800 C Street, Bellingham 98225
13	R	FLANAGAN, S. E. (SID)	Route 1, Box 205, Quincy 98848
29	D	GALLAGHER, P. J. (JIM)	125 South 72nd, Tacoma 98408
48	R	GILLELAND, JAMES E.	10503 N.E. 4th Street, Bellevue 98004
7	R	GLADDER, CARLTON A.	W. 2211 Sharp Avenue, Spokane 99201
9A	R	GOLDSWORTHY, ROBERT F.	Route 2, Rosalia 99170
47	D	GRANT, GARY	12835 S.E. 160th, Renton 98055
42	R	HANSEY, DONALD G.	1551 Lakewood Lane, Bellingham 98225
7	R	HARRIS, EDWARD F.	716 Old Nat'l Bank Bldg., Spokane 99201
14	R	HATFIELD, CHET	220 E. Yakima Ave., Yakima 98901
2A	D	HAUSSLER, JOE D.	Box 949, Omak 98841
21	R	HOGGINS, DALE E.	21826 95th Ave. W., Edmonds 98020
11A	R	HUBBARD, VAUGHN	Box 126, Waitsburg 99361
3	D	HURLEY, MARGARET	730 E. Boone, Spokane 99202
20	D	JASTAD, ELMER	Box 38, Morton 98356
16A	D	JOHNSON, DORIS J.	737 Tacoma Place, Kennewick 99336
48	R	JONES, JOHN D.	18 Bridlewood Circle, Kirkland 98033
28	R	JUELING, HELMUT L.	5215 South Tacoma Way, Tacoma 98409
41	R	JULIN, AXEL C.	4615 Lake Wash. Blvd. S.E., Bellevue 98004
16B	D	KILBURY, CHARLES D.	Box 2482, Pasco 99302

ROSTER OF MEMBERS

House of Representatives 99 MEMBERS (51 REPUBLICANS, 48 DEMOCRATS)

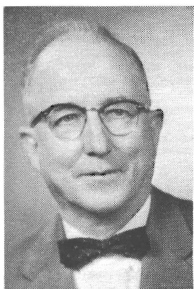
<u>DIST.</u>	<u>PARTY</u>	<u>NAME</u>	<u>ADDRESS</u>
38	D	KING, RICHARD A.	309 77th Place S.W., Everett 98202
36	R	KIRK, GLADYS	1236 Bigelow North, Seattle 98109
21	R	KISKADDON, BILL	4404 242nd S.W., Mountlake Terrace 98043
4	D	KNOWLES, WALT O.	8423 E. Liberty, Spokane 99206
6	R	KOPET, JERRY C.	1728 S. Lincoln St., Spokane 99203
46	R	KRAABEL, PAUL B.	5221 18th N.E., Seattle 98105
4	R	KUEHNLE, JAMES P.	S. 1122 Skyline Place, Spokane 99206
45	D	LITCHMAN, MARK	1604 IBM Building, Seattle 98101
5B	D	LUDERS, EDWARD T.	N. 5620 Moore, Spokane 99208
14	R	LYNCH, MARJORIE W.	802 Pickens Road, Yakima 98902
31	D	LYSEN, KING	12040 Standring Court S.W., Seattle 98146
5A	D	MCCORMICK, GERALDINE	W. 3909 Lyons, Spokane 99208
43	D	MCDERMOTT, JAMES A.	1650 22nd East, Seattle 98102
49	D	MARSH, DANIEL G.	1111 Broadway, Vancouver 98660
38	D	MARTINIS, JOHN	2304 8th Street, Everett 98201
27	D	MARZANO, FRANK	2501 S. Melrose Street, Tacoma 98405
37	D	MAXIE, PEGGY JOAN	3302 E. Pine, Seattle 98122
3	D	MAY, WILLIAM J. S. (BILL)	W. 711 Waverly Place, Spokane 99205
10	R	MENTOR, JOE	Route 4, Box 2350, Bremerton 98310
35	D	MERRILL, JOHN	9259 57th Ave. S., Seattle 98118
39	D	MOON, CHARLES	Route 2, Box 427A, Snohomish 98290
15	R	MORRISON, SID W.	Route 1, Box 220AA, Zillah 98953
8A	R	NEUHOUSE, IRVING	Route 1, Box 130, Mabton 98935
44	R	NORTH, LOIS	853 N.W. Elford Drive, Seattle 98177
33	D	O'BRIEN, JOHN L.	1305 Joseph Vance Bldg., Seattle 98101
6	R	PARDINI, A. J.	E. 1625 20th Ave., Spokane 99203
18	R	PARIS, WILLIAM	620 Oregon Way, Longview 98632
45	D	PERRY, ROBERT A.	1154 N. 92nd Street, Seattle 98103
41	R	POLK, WILLIAM M.	7220 92nd Ave. S.E., Mercer Island 98040
43	R	RABEL, JOHN B.	5308 N.E. 43rd, Seattle 98105
23	D	RANDALL, ROBERT W.	3040 Marine Drive, Bremerton 98313
34	D	ROSELLINI, JOHN M.	1213 4th South, Seattle 98134
37	R	ROSS, MICHAEL K.	620 21st Ave., Seattle 98122
24	D	SAVAGE, CHARLES R.	2011 King Street, Shelton 98584
25	D	SAWYER, LEONARD A.	2723 E. Main, Puyallup 98371
2B	R	SCHUMAKER, WILLIAM (BILL)	208 W. 5th, Colville 99114
28	R	SHERA, NED	8516 130th S.W., Tacoma 98498
47	D	SHINPOCH, A. N. (BUD)	361 Maple Avenue N.W., Renton 98055
20	R	SMITH, WARREN	P.O. Box 245, Centralia 98531
49	R	SMYTHE, RICHARD L.	5204 DuBois Drive, Vancouver 98661
15	R	SPANTON, KEITH J.	3803 4th Street, Union Gap 98903
26	R	SWAYZE, JR., THOMAS A.	3408 North 24th St., Tacoma 98406
18	D	THOMPSON, ALAN	303 Estey Drive, Castle Rock 98611
42	D	VAN DYK, DAN	7585 Noon Road, Lynden 98264
10	R	WANAMAKER, F. (PAT)	Route 1, Box 193A, Coupeville 98239
32B	D	WILLIAMS, ALVIN C.	2515 North 40th, Seattle 98103
27	D	WOJAHN, LORRAINE	3592 East Kay Street, Tacoma 98404
22	R	WOLF, HAL	Clark Road, Yelm 98597
17	R	ZIMMERMAN, HAROLD S.	1432 N.E. 6th Ave., Camas 98607

REPRESENTATIVES



ADAMS, A. A. (Democrat) Representative from the 26th District of Pierce County, is serving his second session. Born in 1900 in Bellingham. Graduate, Palmer College of Chiropractic, Davenport, Iowa. Past-president, American Chiropractic Association, past vice-president of International Chiropractic Association. Former Chairman, Tacoma Utility Board. Member, Board of Directors of Boys Clubs of America, Advisory Board of Seattle First National Bank, Chamber of Commerce and Masonic bodies. He and his wife, Mildred, have one child.

AMEN, OTTO (Republican) Representative from Legislative District 9-B comprising Adams and Lincoln counties is serving his third session. Born in 1912 in Ritzville. Graduate, W.S.U. with a B.S. in Pharmacy, is engaged in farming. Member, Grange, Lions International, and Chamber of Commerce. Served as President of Washington State Wheat Association, Washington Wheat Commission, and State Coordinator of Food for Peace. He and his wife, Doris, have two sons.



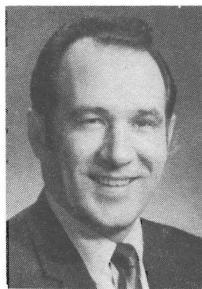
ANDERSON, ERIC O. (Democrat) Representative from the 19th District comprising Pacific and part of Grays Harbor counties, is serving his sixth session. Born in New Zealand. Is a former logging engineer, construction foreman, and flood control supervisor. Member, Grange, Masons, Eastern Star, and I.W.A. Timber Workers. He and his wife, Ida May, have two children.

BACKSTROM, HENRY (Democrat) Representative from the 39th District of Snohomish County, is serving his seventh session. Native of New Britain, Connecticut. Educated at Olds College of Agriculture and Edison Institute, is in the real estate investment and insurance business. Member, Elks, Moose, Lions, WAC, Past Executive-Governor of Lions International, chairman, WSAD Insurance Association. He and his wife, Elvira, have three children.

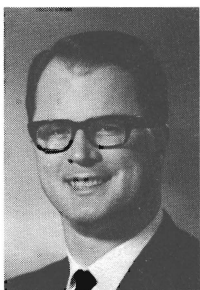


REPRESENTATIVES

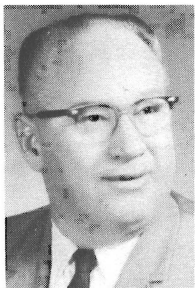
BAGNARIOL, JOHN (Democrat) Representative from the 35th District of King County, is serving his third session. Born in 1932 in Renton. Graduate of Franklin High School. Member St. Paul's Men's Club, Scouting, Kiwanis, and Rainier Beach Community Club. He is currently self-employed as an insurance agent. He and his wife, Edna, have eight children.



BARDEN, PAUL (Republican) Representative from the 30th District of King County, is serving his third session. Born in 1936 in Seattle. Attended the University of Washington and is a banker. Served as a sergeant in the Marine Corps. Member, Young Republicans, Elks, Kiwanis, Jaycees, and Federal Way, Kent and Burien Chambers of Commerce. He and his wife, Jamel, have two sons.



BAUER, ALBERT (Democrat) Representative from the 17th District comprising Klickitat, Skamania, and part of Clark counties, is serving his first session. Born in 1928 in Lewistown, Montana. Graduate, Portland State College with B.S. in Political Science and Oregon State College with Masters in Education; is a teacher. Past President, Community Club, PTA; President, Vancouver Education Association. Member, Grange, American Legion. He and his wife, Patricia, have three children.



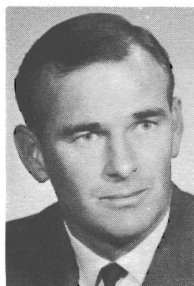
BECK, CLIFFORD W. (RED) (Democrat) Representative from the 23rd District of Kitsap County, is serving his sixth session. Born in 1907 in Bloomington, Indiana. Attended Stanford University and is self-employed as a property manager. Served in the Navy and is a retired Naval Ordnance Engineer. Member, Elks, Eagles, Grange, Kiwanis, D.A.V.'s, Fleet Reserve Association, and South Kitsap Chamber of Commerce. He is married and his wife's name is Hope Grace.

REPRESENTATIVES



BENITZ, MAX E. (Republican) Representative from District 8-B of Benton County, is serving his second session. Born in 1916 in Wathena, Kansas. He is self-employed as a rancher. Past-president of the Washington State Farm Bureau Federation; Vice Chairman, Higher Education Committee; Vice Chairman, Coordinating Council for Vocational Education; past school board member, and former member of the board of directors of the Benton-Franklin County Fair. He and his wife, Marie, have five children.

BERENTSON, DUANE (Republican) Representative from the 40th District comprising San Juan and Skagit counties, is serving his fifth session. Born in 1928 in Anacortes. Graduate, Pacific Lutheran University, he is a broker-dealer in securities. He and his wife, Joanne, have five children.



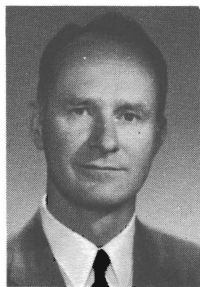
BLAIR, E. SCOTT (Republican) Representative from the 46th District of King County, is serving his first session. Born in 1929 in Seattle. Graduate, University of Washington with B.S., is a mechanical engineer. Serves in Naval Air Reserve. Past President, Wedgewood Community Club. He and his wife, Marilyn, have three children.

BLEDSON, STEWART (Republican) House Majority Leader from the 13th District comprising Grant and Kittitas counties, is serving his fourth session. Born in 1922 in California, Attended UCLA and graduated from WSU. Enlisted as a fighter pilot in WW II, he is a rancher, and Natural Resources Director for Greenacres, Inc., Seattle; Past-president, Ellensburg Rodeo. He and his wife, Betsy, have four children.



REPRESENTATIVES

BLUECHEL, ALAN (Republican) Representative from the 1st District of King County, is serving this third session. Born in 1924 in Edmonton, Alberta, Canada. Received a B.A.Sc. in electrical engineering, and a B.A. in General Studies from the University of British Columbia. Member, Conservation Committee of the King County Environmental Development Commission; World's Fair Commission-Expo '70, Osaka, Japan; Washington State Trade Fair Mission in 1965 and 1966. He is president of Loctwall Corporation. He and his wife, Aylene, have two sons.



BOTTIGER, R. TED (Democrat) Representative from the 29th District of Pierce County, is serving his fourth session. Born in 1932 in Tacoma. Graduate, University of Puget Sound with a B.A. degree and University of Washington Law School, he is an attorney. He and his wife, Darlene, have three children.

BOZARTH, HORACE W. (Democrat) Representative from the 12th District comprising Chelan and Douglas counties, is serving his ninth session. Born in Fairfield, Washington. Graduate, Gonzaga University with a B.A. degree, he is a businessman and a farmer. Member, Board of Regents of Gonzaga University, Executive Board of the Washington State Grange, and Eagles Lodge. He is married and his wife's name is Christine.



BRADLEY, H. STAN (Democrat) Representative from the 31st District of King County, is serving his first session. Born in 1921 in Seattle, is a garage owner. Past President, White Center Chamber of Commerce, Associated Improvement Clubs of South King County. Member, Advisory Council to Evergreen High School. He and his wife, Lilly, have two children.

REPRESENTATIVES



BROUILLET, FRANK BUSTER (Democrat) Representative from the 25th District of Pierce County, is serving his eighth session. Born in 1928 in Puyallup. Graduate, University of Puget Sound with B.A. and M.A. degrees and University of Washington with doctoral degree. Served in U. S. Army Counterintelligence Corps. Chairman, Interim Committee on Education. Member, Community College Faculty, Grange, and Masons. He and his wife, Marge, have two sons.

BROWN, ARTHUR C. (Republican) Representative from the 1st District of King County, is serving his second session. Born in 1921 in Atlanta, Georgia. Graduate, University of Washington. A retired Lt. Comdr. from the U. S. Navy, he is currently employed by Boeing. Past President, Washington Association of County Boards of Education. Member, Board of Trustees, Shoreline Public Library, Community Development Council of Shoreline and Citizens Advisory Committee and Election Planning Committee for the Shoreline School District. He and his wife, Ann, have five children.



CECCARELLI, DAVE (Democrat) Representative from the 34th District of King County, is serving his third term. Graduate, Seattle University with B.C.S. in Commerce and Finance. Employed by the Quadrant Corporation in Commercial and Industrial Real Estate Sales. Past President, West Seattle Council on Youth Affairs; Board Member, Seattle Treatment Center, Seattle King County Council on Alcoholism; Governors Advisory Council on Alcoholism; Knights of Columbus, West Seattle Chamber of Commerce.

CHARETTE, ROBERT L. (Democrat) Representative from the 19th District comprising Pacific and Grays Harbor (part) counties. Served four sessions in the Senate and is serving his third session in the House. Born in 1923 in Aberdeen. Graduate, Grays Harbor College and University of Washington Law School, he is a partner in a law firm. Member, Phi Kappa Psi, Phi Delta Phi, Grays Harbor and American Bar Association, VFW, and Military Order Purple Heart. He and his wife, Betty, have three daughters.



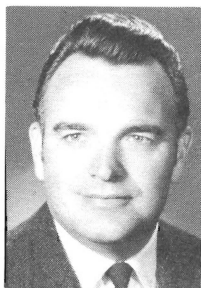
REPRESENTATIVES

CHARNLEY, DONN (Democrat) Representative from the 44th District of King County, is serving his first session. Born in 1928 in Detroit. Graduate, University of Washington with M.S. in Geology, he is professor at Shoreline Community College. Member, Ballard Community Council, Shoreline Human Rights Council, King County Environmental Commission, PTA. He and his wife, Lucile, have five children.



CHATALAS, WILLIAM (BILL) (Democrat) Representative from the 33rd District of King County, is serving his sixth session. Born in 1907 in Istanbul, Turkey. Attended, University of Washington Extension School. He is President of a real estate and insurance firm; Chairman, Democratic Caucus; Member, Executive Board, Muscular Dystrophy Association; Mt. Baker Improvement Club, Rainier Businessmen's Club, Chamber of Commerce, Municipal League, Order of Ahepa, Jackson Street Community Council, Young Men's Democratic Club, 33rd District Democratic Club. He and his wife, Goldie, have three sons.

CONNER, PAUL H. (Democrat) Representative from the 24th District comprising Clallam, Mason, and Jefferson counties. Appointed to the Senate in 1957, is now serving his seventh term in the House. Born in 1925 in Port Angeles. Attended, Port Angeles Business College, Western Washington State College and University of Washington. He and his wife, Thelma, have four children.



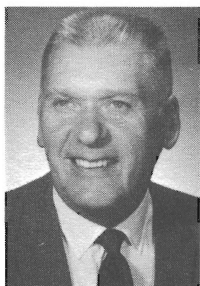
CONWAY, FLOYD (Republican) Representative from the 22nd District of Thurston County, is serving his second session. Born in 1929 in Aberdeen. Graduate, St. Martin's College with a B.A. degree in Education, he is a teacher. Served four years in the Air Force. Member, Washington Education Association and National Education Association. He and his wife, Joan, have five children.

REPRESENTATIVES



COPELAND, THOMAS L. (Republican) Representative from the 11-B District comprising Asotin, Columbia, Garfield, and part of Walla Walla counties, is serving his eighth session. Born in 1924 in Pendleton, Oregon. Attended, Kemper Military School and Washington State University, he is a farmer. Captain in the Army in World War II. Member, Elks, American Legion, Farm Bureau, Masons, Chamber of Commerce, and Sigma Nu Fraternity.

COSTANTI, D. JAMES (Republican) Representative from the 40th District, comprising Skagit and San Juan counties, is serving his first session. Born in 1909 in Tacoma. Graduate, University of Arizona with B.A. in Education, is a school administrator. Member, Elks, Knights of Columbus. He and his wife, Frances, have three children.



CUNNINGHAM, NORWOOD (Republican) Representative from the 30th District of King County, is serving his fourth session. Born in Sunnyside. Graduate, George Fox College with postgraduate work at the University of Washington, University of Oregon, San Diego State and Indiana University, is currently Director of MOT for Kent Public Schools. Veteran World War II. Member, American Legion, Rotary Club, Evergreen Safety Council, WEA and NEA. He and his wife, Florence, have two sons.

CURTIS, ROBERT (BOB) (Republican) Representative from the 12th District, comprising Douglas and Chelan counties, is serving his second session. Born in 1933 in Wenatchee. Graduate, Pacific Lutheran University, he is the owner-manager of a supermarket. Past President, Washington State Junior Chamber of Commerce; Chairman, Salvation Army Advisory Board. Member, UGN. He and his wife, Patty, have four children.



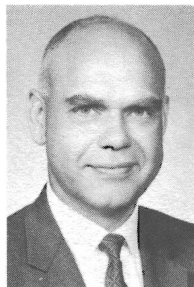
REPRESENTATIVES

DOUTHWAITE, G. K. (JEFF) (Democrat) Representative from District 32A of King County, is serving his first session. Born in 1929 in Montreal. Graduate, University of Washington with B.S. and M.S. in Electrical Engineering, is a professor at University of Washington. Member, University District Community Council. He and his wife, Mary Louise, have three children.



EIKENBERRY, KEN (Republican) Representative from the 36th District of King County, is serving his first session. Born in 1932 in Wenatchee. Graduate, Washington State University and University of Washington School of Law. Former FBI agent, now an attorney. Past President, Young Men's Republican Club of King County. His wife's name is Beverly.

FARR, DR. CASWELL J. (Republican) Representative from the 42nd District of Whatcom County, is serving his third session. Born in 1921 in Garfield. Attended Washington State University and graduated from the University of Washington with B.S. in chemistry, B.S. in public health, and DDS., and is a Dentist. Member, Advisory Board for Department of Public Assistance, State Comprehensive Health Planning Council, and Whatcom County Mental Health Board. He and his wife, Marlys, have two children.



FLANAGAN, SID (Republican) Representative from the 13th District comprising Grant and Kittitas counties, is serving his sixth session. Born in 1909 in Bellingham. Graduate of the University of Washington, majoring in Public Utilities, he is a farmer and cattleman. Member, St. Pius Xth Catholic Church of Quincy. He and his wife, Vyvian, have three children.

REPRESENTATIVES



GALLAGHER, P. J. (JIM) (Democrat) Representative from the 29th District of Pierce County, is serving his sixth session. Born in 1915 in Taylor, Washington. Graduate, Washington State University, he is employed in Public Relations and sales. Member, Knights of Columbus and Eagles. He and his wife, Mabel, have six children.

GILLELAND, JAMES E. (Republican)

Representative from the 48th District of King County, is serving his first session. Born in 1918 in Seattle. Graduate, Franklin High School. Attended, University of Washington. Owner and president of an oil company. Past Chairman, UGN and Bellevue Quality School Levy Program. He and his wife, Sylvia, have four children.

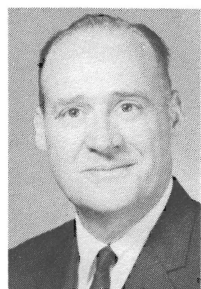


GLADDER, CARLTON A. (Republican)

Representative from the 7th District of Spokane County, is serving his third session. Born in 1909 in Atwater, Minnesota. Graduate, Drake University, Des Moines, Iowa, is in the life insurance business. Past President, Spokane Life Underwriters' Association; Past Governor, Gyro International; winner, National Quality Award; Boy Scouts, Speakers' Bureau. He and his wife, Jeanne, have three children.

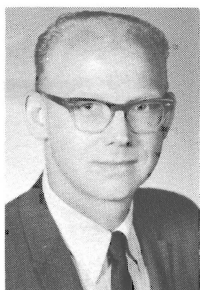
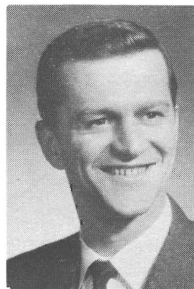
GOLDSWORTHY, ROBERT F. (Republican)

Representative from District 9-A of Whitman County, is serving his eighth session. Born in 1917 in Rosalia. Graduate, Washington State University with a B.A. degree, is a farmer. Served in World War II and in the Korean conflict. Member, Masons, American Legion, Military Order of World Wars, Order of Daedalians. He and his wife, Jean, have two children.



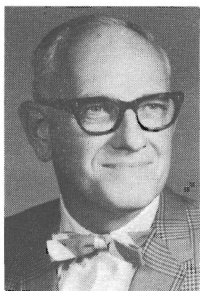
REPRESENTATIVES

GRANT, GARY (Democrat) Representative from the 47th District of King County, is serving his fifth session. Born in 1934 in Chippewa Falls, Wisconsin. Graduate, St. Martin's College with B.A. in Industrial Relations, is employed in Labor Relations. Former member, Junior Chamber of Commerce and Toastmasters. He and his wife, Tanya, have four children.



HANSEY, DONALD G. (Republican) Representative from the 42nd District of Whatcom County, served one session in the Senate and is serving his first session in the House. Born in 1929 in Everett. Graduate, University of Washington with a B.A. in Business, operates a chick hatchery. Member, State Aeronautics Commission, Rotary, Chamber of Commerce, Masons. He and his wife, Ginger, have four children.

HARRIS, EDWARD F. (Republican) Representative from the 7th District of Spokane County, is serving his ninth session. Born in 1909 in Harrison, Idaho. Graduate, University of Idaho School of Business and Gonzaga School of Law, is a practicing attorney. He and his wife, Phyllis, have five children.



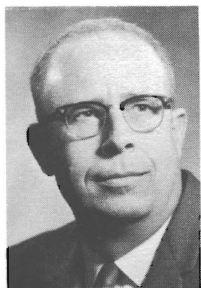
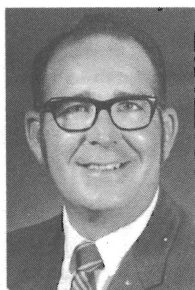
HATFIELD, CHET (Republican) Representative from the 14th District of Yakima County, is serving his second session. Born in 1911 in Yakima. Graduate, University of Washington majoring in advertising and qualified as a CPA, operates dress fabric shop. Former member, Yakima City School Board, and Yakima County School Reorganization Committee. Member, Lions, Masons, Elks. He and his wife, Mary, have four children.

REPRESENTATIVES



HAUSSLER, JOE D. (Democrat) Representative from District 2-A of Okanogan County, is serving his fifth session. Born in 1902 in Alvin, Texas. Former County Commissioner, a businessman and orchardist. He and his wife, Pearl, have three children.

HOGGINS, DALE E. (Republican) Representative from the 21st District of Snohomish County, is serving this third session. Born in 1932 in White Swan. Graduate, Western Washington State College with B.A. degree and University of Washington with Masters in Education, is Elementary Principal of Mountlake Terrace School. Member, Phi Delta Kappa, Edmonds Methodist Church, Mid-City Athletic Association, Lynnwood Rotary, and Washington Education Association. He and his wife, Donna, have three children.



HUBBARD, VAUGHN (Republican) Representative from District 11-A comprising Asotin, Columbia, Garfield and part of Walla Walla counties, is serving his fourth session. Born in 1922 in Dayton. Graduate, WSU with a B.A. in Political Science and LL.B. from the University of Washington Law School, is a lawyer. Served as a U.S. Navy Pilot during World War II. He practices law with offices in Walla Walla and Waitsburg.

HURLEY, MAGARET (Democrat) Representative from the 3rd District of Spokane County, is serving her tenth session. Graduate, Holy Names College with Bachelor of Arts in Education. Member, Spokane Bar Association Auxiliary and Citizens Against Residential Freeways. She has four children.



REPRESENTATIVES

JASTAD, ELMER (Democrat) Representative from the 20th District of Lewis County and Grays Harbor (part), is serving his fourth session. Born in Chehalis. Graduated from the School of Pharmacy, Washington State University and is a Pharmacist (self-employed). Mayor of Morton. Member, Shrine, Masons, Eagles, and Elks. He and his wife, Edna Mae, have a son.



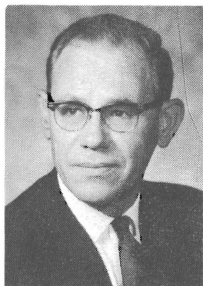
JOHNSON, DORIS (Democrat) Representative from District 16A of Benton County, is serving her third session. Graduate, Western Washington State College with a Masters in Education, is a school counselor. Chairman, Kennewick Citizens Advisory Committee for Community Improvement. Member, AAUW, Business and Professional Women, WEA, and NEA. She and her husband, Harold, have one daughter.

JONES, JOHN D. (Republican) Representative from the 48th District of King County, is serving his first session. Born in 1923 in Wales. Attended, Wayne State University, is a manager for Pacific Northwest Bell Telephone. Past President, Bellevue Chamber of Commerce; President, Rotary; Chairman, North King County UGN. He and his wife, Ruth, have two children.



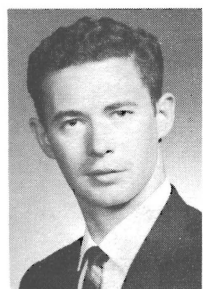
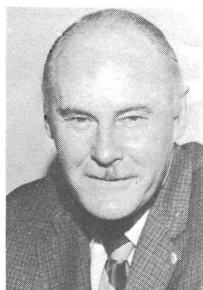
JUELING, HELMUT L. (Republican) Representative from the 28th District of Pierce County, is serving his sixth session. Born in 1913 in Loup City, Nebraska. Graduate, University of Puget Sound with a B.A. degree, is the owner of a laundry and linen supply firm. He and his wife, Ruth, have two daughters.

REPRESENTATIVES



JULIN, AXEL C. (Republican) Representative from the 41st District of King County, is serving his second session. Born in 1918 in Wallace, Idaho. Graduate, Gonzaga University and University of Washington Law School, is a lawyer. Past President, Bellevue School Board, City of Bellevue Board of Adjustments. Past member, Board of Trustees of Seattle-King County Bar Association. Member, Greater Bellevue Chamber of Commerce, Municipal League of Seattle and King County, PTA, Forward Thrust. He and his wife, Katherine, have three daughters.

KILBURY, CHARLES (Democrat) Representative from District 16B of Franklin County, is serving his first session. Born in 1919 in Yakima. Attended, Yakima Valley College, is an insurance broker. President, Railway Labor Council. Director, Community Action Council. Member, Pasco City Council, Pasco Planning Commission. He and his wife, Florence, have three children.



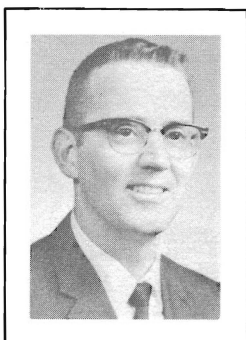
KING, RICHARD (DICK) (Democrat) Representative from the 38th District of Snohomish County, is serving his fourth session. Born in 1934 in Ritzville. Graduate, University of Washington with B.A. and M.A. degrees, is a college teacher and debate coach. Member, Acacia Fraternity, Delta Sigma Rho and Phi Rho Pi Honoraries. He and his wife, Mary Evelyn, have four children.

KIRK, GLADYS (Republican) Representative from the 36th District of King County, is serving her eighth session. Born in Colorado, graduate of business college, she is a homemaker. Member, Business and Professional Women, American Legion Auxiliary, Past Presidents' Assembly, Health Facilities Planning Board, Committee on Planning Affiliates, Washington Association of Retarded Children, and King County Advisory Committee to State Department of Public Assistance. She and her husband, Douglas, have two sons.

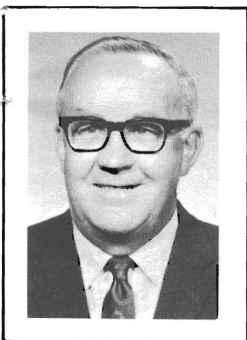


REPRESENTATIVES

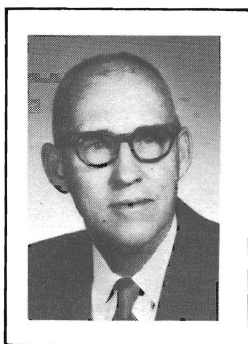
KISKADDON, BILL (Republican) Representative from the 21st District of Snohomish County, is serving his third session. Born in 1929 in Whittier, California. Graduate, University of Washington with B.S. and M.S. in Electrical Engineering, is a Research Engineer for the Boeing Company. Member, Forest Crest Community Club, Richmond Beach Congregational Church, PTA. He and his wife, Donna, have three children.



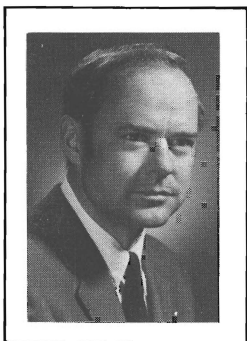
KNOWLES, WALT (Democrat) Representative from the 49th District of Spokane County, is serving his first session. Born in 1916 in Spokane. Graduate, Eastern Washington State College and Gonzaga University, is an attorney. Member, PTA, Moose. He and his wife, Betty, have three children.



KOPET, JERRY C. (Republican) Representative from the 6th District of Spokane County, is serving his third session. Born in 1911 in Portland. Graduate, University of Washington with B.S. (cum laude), M.S. and Ph.D. degrees. He is a pharmacist and is owner and operator of drug stores. Served as Spokane City Councilman, member, Executive Board of Chamber of Commerce, Regional Executive Board of Boy Scouts. He and his wife, Barbara, have three children.



KRAABEL, PAUL (Republican) Representative from the 46th District of King County, is serving his first session. Born in 1933 in Seattle. Graduate, University of Washington with B.A. in Economics and M.S. in Electrical Engineering, is an electronics engineer. Member, Seattle-King County Municipal League, Washington Environmental Council, Forward Thrust. He and his wife, Marino, have four children.

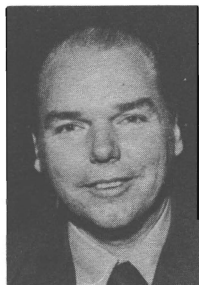
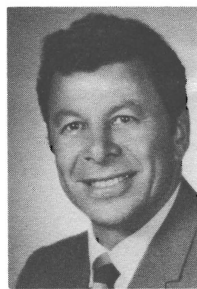


REPRESENTATIVES



KUEHNLE (KEENLY), JAMES P. (Republican) Representative from the 4th District of Spokane County, is serving his second session. Born in 1923 in Dubuque, Iowa. Graduate, Oregon State University, he is President of Holiday Pools, Inc. Past President, Kiwanis Club, Spokane Valley Credit Association. Member, Spokane Chamber of Commerce, Aircraft Owners and Pilots Association, Elks, Masons, and PTA. He and his wife, Georgia, have two daughters.

LITCHMAN, MARK (Democrat) Representative from the 45th District of King County, former Majority Leader, is serving his ninth session. Graduate, Roosevelt High School, College of Pacific, University of Washington with a B.A. degree in Sociology and LL.B., is a practicing attorney. President of Investment-Real Estate firm. Former Naval Intelligence Officer. Member, Elks, PTA, D.A.V., American Legion, Lake City Chamber of Commerce, Haller Lake Community Club, YMCA. He and his wife, Claire, have three children.



LUDERS, EDWARD (Democrat) Representative from District 5B of Spokane County, is serving his first session. Born in 1928 in Spokane. Graduate, Eastern Washington State College, is a school teacher. Member, Spokane County Sportsmen's Association, National Wildlife Federation, Washington Environmental Council, Masonic Lodge. He and his wife, Winifred, have four children.

LYNCH, MARJORIE (Republican) Representative from the 14th District of Yakima County, is serving her fifth session. Born in London, England, where she received her education, she is a homemaker. She served in the Women's Auxiliary Air Force (RAF) and the American Red Cross. Member, Business and Professional Women, Zonta, and League of Women Voters.



REPRESENTATIVES

LYSEN, KING (Democrat) Representative from the 31st District of King County, is serving his first session. Born in 1942 in Minneapolis. Graduate, Seattle University with a B.A. in Education and Political Science, is a youth program planner for the City of Seattle. He and his wife, Tony, have two children.



McCORMICK, GERALDINE (Democrat) Representative from District 5-A of Spokane County, is serving her second session. Born in Spokane. Attended, Whitworth College, and is a homemaker. Member, Eagles Lodge, Triangle Grange, and VFW Auxiliary. She is a widow with two daughters.

McDERMOTT, JAMES (Democrat) Representative from the 43rd District of King County, is serving his first session. Born in 1936 in Chicago. Graduate, Wheaton College, University of Illinois Medical School, and University of Washington Medical School, is a physician and teacher at the University of Washington. Consultant, King County Juvenile Court and Seattle Public Schools. He and his wife, Virginia, have two children.



MARSH, DANIEL G. (Democrat) Representative from the 49th District of Clark County, is serving his fourth session. Born in 1937 in Salem. Graduate, Willamette University and U of O with B.A. and LL.B. degrees, is an attorney. Served in National Guard. Former Assistant Democratic Whip; member, Sigma Alpha Epsilon, Tau Kappa Alpha, Kiwanis and Grange; Board member, Clark County Mental Health and Mental Retardation Board, Tuberculosis Association. He and his wife, Diane Kay, have two sons.

REPRESENTATIVES



MARTINIS, JOHN (Democrat) Representative from the 38th District of Snohomish County, is serving his second session. Born in 1930 in Everett. Attended, Everett Junior College, is a retail merchant and Commissioner of the Port of Everett. He and his wife, Virginia, have five children.

MARZANO, FRANK G. (Democrat) Representative from the 27th District of Pierce County, is serving his fourth session. Born in 1922 in Tacoma. High school graduate and is a truck driver. Served in the Army and Coast Guard. Member and three-term Commander, AM Vets Life Post No. 5; Member, Tacoma Lodge No. 1740, Bellarmine Boosters, and Christopher Columbus Society. He and his wife, Angel, have four children.



MAXIE, PEGGY JOAN (Democrat) Representative from the 37th District of King County, is serving her first session. Born in 1936 in Amarillo, Texas. Graduate, Seattle University with B.A. in Psychology, is a student and a family counselor.

MAY, WILLIAM J. S. (BILL) (Democrat) Representative from the 3rd District of Spokane County, is serving his sixth session. Graduated from high school and has taken special courses in Advertising and Electronics. He is Executive-Secretary of the Spokane Labor Council and Editor of the *Labor World*. He and his wife, Pearl, have three children.



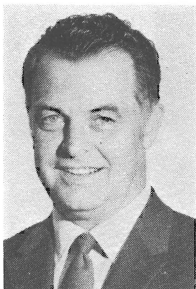
REPRESENTATIVES

MENTOR, JOE (Republican) Representative from the 10th District comprising Kitsap (part) and Island counties, is serving his second session. Born in 1933, he has lived in Kitsap County since 1935. Graduate, University of Washington with a B.A. in Business Administration, is a building contractor. Member, Homebuilders Association; Bremerton, Bainbridge and Poulsbo Chambers of Commerce, Navy League; Oceanographic Commission; Governor's Task Force on Housing; Director, Kitsap County Bank. He and his wife Joan, have three children.



MERRILL, JOHN (Democrat) Representative from the 35th District of King County, is serving his third session. Born in 1915 in Seattle. Graduate, University of Washington with a degree in Business Administration, is owner and manager of a real estate and insurance company. Member, Elks, Eagles, Seattle Real Estate Board, St. Paul's Church Men's Club. Statistician for the University of Washington Athletic Department for 22 years. He and his wife, Elizabeth, have six children.

MOON, CHARLES (Democrat) Representative from the 39th District of Snohomish County, is serving his fifth session. Born in 1923 in Sheridan, Wyoming. Graduate, Washington State University with B.S. and D.V.M. degrees, is a Veterinarian. Served in the United States Army. He and his wife, Ellen, have three sons.



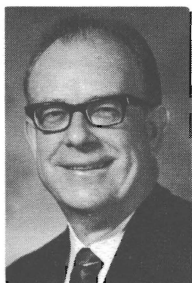
MORRISON, SID W. (Republican) Representative from the 15th District of Yakima County, is serving his third session. Born in 1933 in Yakima. Graduate, Washington State University with B.S. in Agriculture, is a fruit grower. Served in the Army overseas. Former Chairman, Washington Apple Commission; Past President, Washington Peach Council; Member, Methodist Church, Masonic Lodge, Grange, Rotary, and active in Scouting. He and his wife, Marcella, have four children.

REPRESENTATIVES



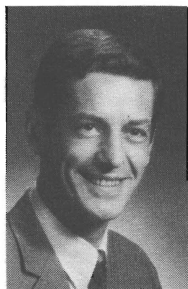
NEWHOUSE, IRVING (Republican) Representative from District 8-A of Yakima County, is serving his fourth session. Born in 1920 in Mabton. Graduate, Washington State University with B.S. in Agriculture, operates an irrigated diversified ranch. Director, Sunnyside Valley Irrigation District; Member, Farm Bureau, Chamber of Commerce, Cattlemen's Association, Washington Reclamation Association. He and his wife, Ruth, have six children.

NORTH, LOIS (Republican) Representative from the 44th District of King County, is serving her second session. Born in Berkeley, California. Graduate, University of California at Berkeley with B.A. and General Secondary Teaching Credentials, she is a homemaker. Former President, Seattle League of Women Voters; King County Freeholder; Member, Washington State Arts Commission and Business and Professional Women. She and her husband, Douglass, have three sons.



O'BRIEN, JOHN L. (Democrat) Representative from the 33rd District of King County, is serving his fifteenth session. Speaker of the House from 1955 through 1961, Majority Leader in 1965, and Minority Leader in 1967 and 1969. Graduate of business college, attended Western Institution of Professional Accounting, and is a CPA. Past President and member Exec. Committee of National Conference of State Legislative Leaders. Member, Eagles, Knights of Columbus, Washington Athletic Club, and Rainier Businessmen's Club. He and his wife, Mary, have six children.

PARDINI, A. J. (BUD) (Republican) 6th District, Spokane County, is serving his second session. Is a bank loan officer. Active in numerous civic, educational and political activities. Serving on Revenue and Taxation; Banking and Insurance; Business and Professions; and Apportionment and Elections Committee. Also serving as Caucus Coordinator. He and his wife, Donna, have 3 daughters.



REPRESENTATIVES

PARIS, WILLIAM N. (Republican) Representative from the 18th District comprising Cowlitz and Wahkiakum counties, is serving his first session. Born in 1927 in Bartlesville, Oklahoma. Attended, Southern California College and Portland State College, is a minister. Member, Cowlitz Hospital Board, Toutle River Boys' Ranch Board, Ministerial Association. He and his wife, Naomi, have three daughters.



PERRY, ROBERT A. (Democrat) Representative from the 45th District of King County, is serving his seventh session. Born in 1921 in New York. He is a graduate of USMS School of Engineering. Served as an officer in the Merchant Marines during World War II and Korean conflict.



POLK, WILLIAM N. (Republican) Representative from the 41st District of King County, is serving his first session. Born in 1935 in Cheburn, Texas. Graduate, Cornell University, is an architect. Member, Seattle Chamber of Commerce, PTA, Municipal League, College Club. He and his wife, Karla, have three children.



RABEL, JOHN (Republican) Representative from the 43rd District of King County, is serving his first session. Born in 1941 in Seattle. Graduate, University of Washington with B.A. in Business Administration. Member, CHECC Executive Board, Washington Environmental Council, Governor's Youth Commission. He and his wife, Kathy, have one daughter.

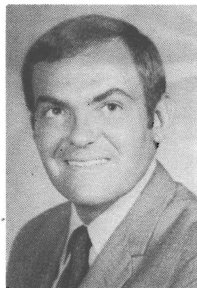


REPRESENTATIVES



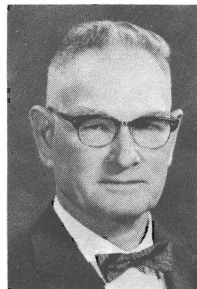
RANDALL, DR. ROBERT W. (Democrat) Representative from the 23rd District of Kitsap County, is serving his second session. Born in 1921 in Chicago. Attended, University of Washington and Illinois College of Optometry, and is an Optometrist. Chairman, Bremerton School Board; President, Community Concert Association; Member, Chamber of Commerce, Kiwanis. He and his wife, Lorna Lee, have three children.

ROSELLINI, JOHN M. (Democrat) Representative from the 34th District of King County, is serving his third session. Born in 1939 in Seattle. Graduate, Washington State University. Attended, Gonzaga Law School, is a law clerk. Member, Exchange Club, Italian Club, and West Seattle Eagles. He and his wife, Marjorie, have three children.



ROSS, MICHAEL (Republican) Representative from the 37th District of King County, is serving his first session. Born in 1941 in Iowa City. Attended, Flint Community College, Washburn College, and University of Washington, is a building contractor. Member, Seattle Public Defender Program, Central Area Mental Health Center Board, Central Contractors' Association, State Law and Justice Planning Committee, Kiwanis.

SAVAGE, CHARLES R. (Democrat) Representative from the 24th District comprising Clallam, Jefferson, and Mason counties, is serving his eleventh session. Served one term in the United States Congress. Born in 1906 in La Farge, Wisconsin, is in the logging business. He and his wife, Helen, have two children.



REPRESENTATIVES

SAWYER, LEONARD A. (Democrat) Representative from the 25th District of Pierce County, is serving his ninth session. Born in 1925 in Puyallup. Graduate, University of Puget Sound and University of Washington Law School, he is an attorney. Served in the Navy during World War II. Member, Elks, Eagles, American Legion, and VFW.



SCHUMAKER, WILLIAM (Republican) Representative from District 2-B comprising Pend Oreille, Stevens and Ferry Counties, is serving his second session. Born in 1915 in Colville. A former newspaper publisher, he and his wife, June, now operate a sporting goods-gun smithing business; dept. editor, national outdoor magazine; free lance photo-journalist. Two daughters in college. Member, Chamber of Commerce, American Legion, Stevens County Historical Association, National Rifle Association and Shooters Club of America.

SHERA, NED (Republican) Representative from the 28th District of Pierce County, is serving his second session. Born in 1931 in Seattle. Graduate, Yale University with B.S. in Business and Finance, is Exec. Vice Pres. and owner of an insurance brokerage firm. Past President, Tacoma-Pierce County Life Underwriters Association; UGN Campaign Chairman; Board Member, Lakewood Unlimited, Tacoma Rotary, Tacoma Philharmonic. He and his wife, Joanne, have three children.



SHINPOCH, ALBERT N. (BUD) (Democrat) Representative from the 47th District of King County, is serving his second session. Born and educated in Oklahoma. Past President, Renton Association for Handicapped Children; Chairman, Greater Renton Community Chest. Industrial Engineer with the Boeing Company. He and his wife, Barbara, have two daughters.

REPRESENTATIVES



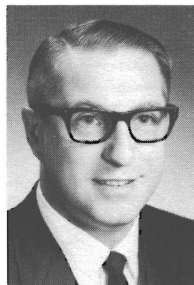
SMITH, WARREN (Republican) Representative from the 20th District comprising Lewis and part of Grays Harbor counties, is serving his first session. Born in 1921 in Mason, Ohio. Graduate, University of Washington, is an insurance agent. Past President, Centralia Kiwanis; Past Vice-President, Jaycees. He and his wife, Jean, have four daughters.

SMYTHE, RICHARD L. (Republican) Representative from the 49th District of Clark County, is serving his third session. Born in 1926 in Tacoma. Attended, Tacoma Public Schools and Nebraska Wesleyan University, is Manager of Pacific Northwest Bell. Served in the Navy in World War II. Member, Kiwanis, and served on local school board for five years. He and his wife, Marvel, have three children.



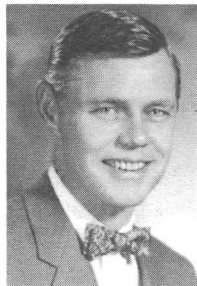
SPANTON, KEITH J. (SPIKE) (Republican) Representative from the 15th District of Yakima County, is serving his third session. Born in 1924 in Yakima. High school graduate and former magistrate. Served three years in Air Force during World War II. Chairman, UGN, County Heart Association; Boy Scout Counselor and Juvenile Delinquency lecturer. He and his wife, Elnore, have four children.

SWAYZE, THOMAS A., JR. (Republican) Representative from the 26th District of Pierce County, is serving his fourth session. Born in 1930 in Tacoma. Graduate, University of Puget Sound and University of Washington Law School, is an attorney. Served in the Army. Active in civic, church, and charitable organizations. He and his wife, Marliiss, have four children.



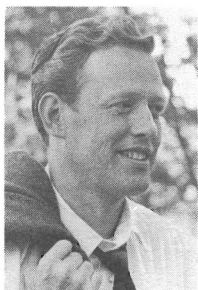
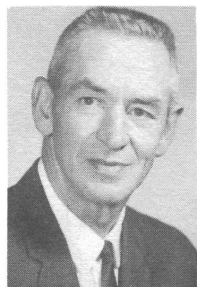
REPRESENTATIVES

THOMPSON, ALAN (Democrat) Representative from the 18th District comprising Cowlitz and Wahkiakum counties, is serving his fourth session. Born in 1927 in Geneva, Iowa. Attended, University of Nebraska and University of California and has a B.A. degree. He is the Publisher of two weekly newspapers: the *Cowlitz County Advocate* and the *Lewis County News*. Served in the Navy. He and his wife, Barbara, have four sons.



VAN DYK, DAN (Democrat) Representative from the 42nd District of Whatcom County, is serving his first session. Born in 1942 in Bellingham. Graduate, Washington State University, is a dairy farmer. Member, Dairy Federation, Cattlemen's Association, Kiwanis, Grange. He and his wife, Jeri, have one child.

WANAMAKER, F. (PAT) (Republican) Representative from the 10th District of Kitsap (part) and Island counties, is serving his third session. Born in 1910 in Port Townsend. Attended, University of Washington, he is a retired farmer and real estate developer. Member, Methodist Church, Chamber of Commerce, Elks, Lions, Masons; Chairman, Ferry Advisory Commission; Served 9 years on County and Local School Board. He and his wife, Irene, have four children.



WILLIAMS, ALVIN C. (Democrat) Representative from District 32-B of King County, is serving his second session. Born in 1930 in North Dakota. Graduate, University of Washington, School of Architecture and Urban Planning, is an architect. Acting Chairman, Lake Union Advisory Commission and Past President of the Wallingford Community Council. He served with Marine Corps. He and his wife, Elizabeth, have three children.

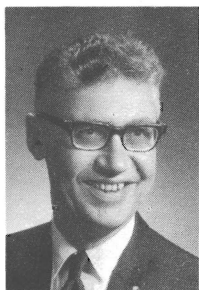
REPRESENTATIVES



WOJAHN, LORRAINE (Democrat) Representative from the 27th District of Pierce County, is serving her second session. Born in 1920 in Tacoma. Attended University of Washington. She works in public relations; Member, Governor's Commission on the Status of Women; Consumer Counseling Services, Inc. of Seattle and Tacoma; Executive Committee, Tacoma Area Urban Coalition. Attended, White House Conference on Food, Nutrition and Health. She and her husband, Gilbert, have one son.

WOLF, HAROLD E. (HAL) (Republican)

Representative from the 2nd District of Thurston County, is serving his fourth session. Graduate, University of Puget Sound with a B.A. degree, he owns and operates a supermarket. Served in the Navy during World War II. Active in civic affairs. Majority Whip; Member, Legislative Council. He and his wife, Peggy, have three children.



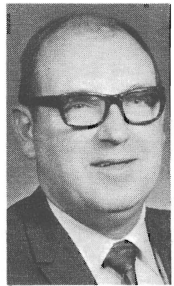
ZIMMERMAN, HAROLD S. (HAL) (Republican)

Representative from the 17th District comprising Klickitat, Skamania, and part of Clark counties, is serving his third session. Born in 1923 in Valley City, North Dakota. Graduate, University of Washington with a B.A. degree, is Editor-Publisher of the *Carnas Post Record*. Served in the Air Force in World War II. Past President, Washington Newspaper Publishers Association; Member, Sigma Chi, Methodist Church, Kiwanis, and Grange. He and his wife, Judy, have three children



McBEATH, MALCOLM (DUTCH) (Republican) Chief Clerk of the House of Representatives serving his third session. Served as a member from the 42nd District in the 1953 and 1955 sessions. Born in 1913 in Bellingham. Attended Western Washington State College and University of Washington, is the owner of McBeath Glass and Paint Company in Bellingham and President of McBeath Glass Company in Mount Vernon. Former City Councilman, former member of the Planning Commission and Past President of the Chamber of Commerce. He and his wife, Eleanor, have four children.

WILSON, DONALD R. (Democrat) Served six sessions as Assistant Secretary of the Senate, and is serving his first session as Assistant Chief Clerk of the House from the 22nd District of Thurston County. Born in 1922 in Aberdeen. Attended, University of Mississippi, is an engineer for the Burlington Northern Railway. President, Glenwood Park Community Club; Former Mediator, National Mediation Board. He and his wife, Sheryl, have four children.



PRINCE, EUGENE A. (Republican) Sergeant-at-Arms of the House of Representatives, serving his third session. Worked as an employee with the house staff in 1959 and 1963. Born in 1930 in Thornton. Graduate, WSU in agriculture and engineering and is a farmer. Served in the Air Force as a transportation officer. Past State President, Washington Association of Wheat-growers. Member, Masons, Grange, Farm Bureau. He has two children.