



Legislators

— State of Washington

PICTORIAL
DIRECTORY



WASHINGTON
STATE
LEGISLATURE



A. Ludlow Kramer

A. LUDLOW KRAMER
SECRETARY OF STATE



Daniel J. Evans Governor

Daniel J. Evans (Republican) is beginning his second term as Governor of the State of Washington, having been re-elected in November by a larger percentage margin than any incumbent governor in the state in 32 years.

Before becoming the state's chief executive, Evans was a partner in a Seattle civil and structural engineering firm. He is a civil engineering graduate of the University of Washington, earning his degrees (a B.S. in 1948 and an M.S. in 1949) between tours of duty as a Navy officer in the Second World War and the Korean War.

Evans, a 43-year-old native of Seattle, was first elected to public office in 1956 as a state representative from King County's 43rd District. He served until his election as Governor in 1964. During the 1961 and 1963 sessions, he was the Republican floor leader.

In the past four years, Evans has held leadership posts in the National Governors' Conference and in the Republican Governors' Association, and is currently chairman of the Western Governors' Conference. Highlighting his activities at the national level was his selection as keynote speaker for the 1968 Republican National Convention.

Evans is married to the former Nancy Ann Bell of Spokane. They have three children: Daniel, Junior, 8, Mark 5, and Bruce 2.

ELECTED OFFICIALS



John A. Cherberg
Lieutenant Governor



A. Ludlow Kramer
Secretary of State



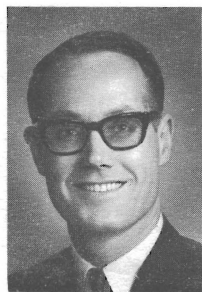
Robert S. O'Brien
State Treasurer



Robert V. Graham
State Auditor

ELECTED OFFICIALS

Slade Gorton
Attorney General



Louis Bruno
**Superintendent
of Public Instruction**



Bert Cole
Commissioner of Public Lands



Karl V. Herrmann
Insurance Commissioner

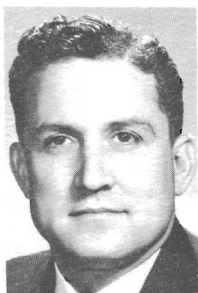


TABLE OF CONTENTS

State Elected Officials	1
Introduction	4
President of Senate	5
Senate Roster	6
Senate Biographies	7
Speaker of House	21
House of Representatives Roster	22
House of Representatives Biographies	24

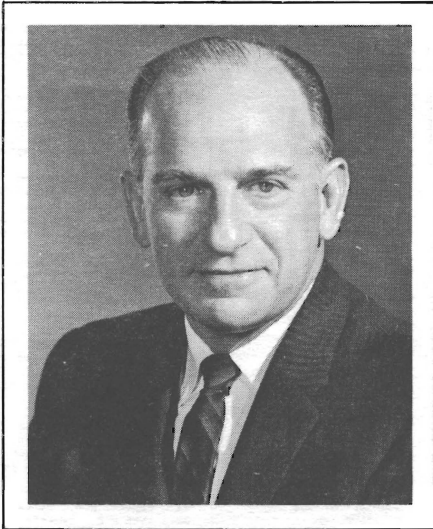
INTRODUCTION

This "41st Session Pictorial Directory of the Washington State Legislature" contains pictures and biographical material about the nine statewide elected officials and members of the 1969 Legislature. This Directory is prepared to assist those interested in becoming better acquainted with their Legislators and the Legislative processes of our state. These are the men and women we have elected to provide our state with the laws that best serve the people.



A. LUDLOW KRAMER
SECRETARY OF STATE

SENATORS OF THE STATE OF WASHINGTON



John Cherberg
Lieutenant Governor
President of the Senate

John Andrew Cherberg (Democrat) is serving his 7th term as President of the Senate and Ex-Officio Chairman of the Senate Rules Committee. He was first elected Lieutenant Governor in 1956, and re-elected in 1960, 1964 and 1968. Born in 1910 in Pensacola, Florida, he received a life teaching diploma from the University of Washington in 1934. Formerly a teacher, he was head football coach at the University of Washington prior to his election. He and his wife Betty have three children.

ROSTER OF MEMBERS

State Senate 49 MEMBERS (27 DEMOCRATS, 22 REPUBLICANS)

<u>DIST.</u>	<u>PARTY</u>	<u>NAME</u>	<u>ADDRESS</u>
48	R	ANDERSEN, JAMES A.	3008 98th N.E., Bellevue 98004
42	R	ATWOOD, R. F., JR.	220 Bhm. Nat'l Bank Bldg., Bellingham 98225
19	D	BAILEY, ROBERT C.	P.O. Box 146, South Bend 98586
8	R	CANFIELD, DAMON R.	1368 Upland Dr., Sunnyside 98944
33	D	CONNOR, FRANK	3201 S. Massachusetts, Seattle 98114
5	D	COONEY, JOHN L.	N. 4403 Adams, Spokane 99205
4	D	DAY, WILLIAM S.	2721 E. Sprague, Spokane 99202
11	D	DONOHUE, HUBERT F.	Route 2, Box 13, Dayton 99328
37	D	DORE, FRED H.	1424 Washington Bldg., Seattle 98101
47	D	DURKAN, MARTIN J.	404 Olympic Nat'l Life Bldg., Seattle 98104
10	R	ELICKER, CHARLES W.	Rt. 7, Box 7790, Bainbridge Island 98110
26	R	FAULK, LAWRENCE J.	3410 No. Ferdinand, Tacoma 98407
49	D	POLEY, FRANK W.	3924 Wauna Vista Dr., Vancouver 98661
39	D	GISSBERG, WILLIAM A.	10928 Maple Lane, Lake Stevens 98258
34	D	R. R. BOB GREIVE	4444 California Ave. S.W., Seattle 98166
6	R	GUESS, SAM C.	W. 408 33rd Ave., Spokane 99203
17	D	HENRY, AL	Rio Vista, White Salmon 98672
31	D	HERR, GORDON	10617 21st S.W., Seattle 98146
1	R	HOLMAN, FRANCIS E.	1900 Washington Bldg., Seattle 98101
9	R	HUNTLEY, ELMER C.	Thornton 99176
3	D	KEEFE, JAMES E.	412 W. Glass Ave., Spokane 99205
25	D	KNOBlauch, REUBEN A.	P.O. Box 306, Sumner 98390
41	R	LEWIS, BRIAN J.	1804 127th Ave. S.E., Bellevue 98004
22	R	LEWIS, HARRY B.	2019 Clairmont Circle, Olympia 98501
16	D	MCCORMACK, MIKE	1314 Hains, Richland 99352
29	D	MCCUTCHEON, JOHN T.	P.O. Box 387, Steilacoom 98388
12	R	MCDUGALL, BOB	Route 2, Box 2001, Wenatchee 98801
38	D	MARDESICH, AUGUST P.	4712 Mermont Dr., Everett 98201
45	R	MARQUARDT, RICHARD G.	12542 Densmore Ave. No., Seattle 98133
14	R	MATSON, JIM	Route 2, Box 730, Selah 98942
21	R	METCALF, JACK	7421 46th West, Mukilteo 98275
28	R	NEWSCHWANDER, CHARLES E.	2140 Bridgeport Way, Tacoma 98466
20	D	ODEGAARD, GARY M.	P.O. Box 27, Onalaska 98570
40	D	PETERSON, LOWELL	Box 188, Concrete 98237
44	R	PETERSON, TED G.	2345 N.W. Blue Ridge Dr., Seattle 98177
36	R	PRITCHARD, JOEL M.	1401 Broadway, Seattle 98122
35	D	RIDDER, ROBERT C.	5809 S. Roxbury, Seattle 98118
46	R	RYDER, JOHN N.	6811 55th Ave. N.E., Seattle 98115
24	D	SANDISON, GORDON	P.O. Box 967, Port Angeles 98362
30	R	STENDER, JOHN H.	19039 Pacific Highway So., Seattle 98189
27	D	STORTINI, JOE	1623 Firlands Dr., Tacoma 98405
18	D	TALLEY, DON L.	1817 Bloyd, Kelso 98626
7	R	TWIGG, ROBERT W.	817 Northtown Office Bldg., Spokane 99207
32	D	UHLMAN, WESLEY C.	207 College Club Bldg., Seattle 98104
23	D	WALGREN, GORDON L.	245 Fourth Street Bldg., Bremerton 98313
13	D	WASHINGTON, NAT	42 C Street, N.W., Ephrata 98823
43	R	WILLIAMS, WALTER B.	3871 45th N.E., Seattle 98105
2	D	WILSON, BRUCE A.	P.O. Box 553, Omak 98841
15	R	WOODALL, PERRY B.	P.O. Box 507, Toppenish 98948

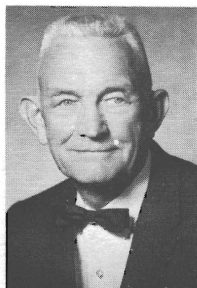
SENATORS

ANDERSEN, JAMES A. (Republican) Senator from the 48th District of King County, has served four terms in the House and is serving his second session in the Senate. Born in 1924 in Auburn. Graduate, University of Washington with a B.A. degree in Political Science and LL.B. degree. A former King County Deputy Prosecuting Attorney, is now a lawyer in private practice. Combat infantryman during World War II. He and his wife Billiette have two children.



ATWOOD, R. FRANK (Republican) Senator from the 42nd District of Whatcom County, is serving his fourth session. Born in 1926 in Massachusetts. Graduate, WSU with a B.A. in Political Science and University of Washington Law School with LL.B., is an attorney. Veteran of World War II, Major in the Army Reserve. Member, Lions, Elks, YMCA; past member, Bellingham City Council. He and his wife Marie have three children.

BAILEY, ROBERT C. (BOB) (Democrat) Senator from the 19th District comprising Pacific and part of Grays Harbor Counties, served three terms in the House and is serving his 7th session in the Senate. Born in 1918 in Raymond. Is a printer by trade, member of the Typographical Union, and formerly published a weekly newspaper. Served in the Navy during World War II. Member, Eagles, VFW, American Legion, Masons, and Boy Scout Council. He and his wife Lee have one son.



CANFIELD, DAMON R. (Republican) Senator from the 8th District comprising parts of Yakima and Benton counties. Served seven terms in the House and is serving his second session in the Senate. Born in 1897 in Arkansas. Attended, University of Washington and Graduate, Washington State University (magna cum laude), is a retired Educator, Fruit and Cattle Rancher. Past Master, Grange; President, Central Washington Fair; member, Methodist Church, Masons, American Legion, WW I Veterans. He and his wife Marie have two children.

SENATORS



CONNOR, FRANK (Democrat) Senator from the 33rd District of King County, served three terms in the House and will be serving his 7th Session in the Senate. Born in 1916 in Seattle. Graduate, O'Dea High School, is a Realtor. Member, Eagles, Knights of Columbus. He is married and his wife's name is Arlene.

COONEY, JOHN L. (Democrat) Senator from the 5th District of Spokane County, served two terms in the House and is serving his 6th session in the Senate. Born in 1915 in Condon, Oregon. Graduate, Gonzaga Law School, is a practicing attorney. Member, Eagles, Elks, Grange, Knights of Columbus, and Garland Businessmen's Association. He and his wife Marguerite have four children.



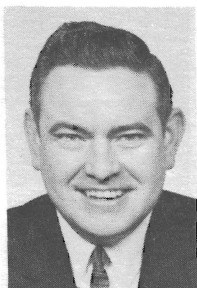
DAY, WILLIAM S. (BILL) (Democrat) Senator from the 4th District of Spokane County, served five terms in the House and is serving his first session in the Senate. Speaker of the House in 1963. Born in 1923 in Rockford, Illinois. Graduate, Palmer College of Chiropractic in Davenport, Iowa, is a Chiropractor. Served in the Army during WW II. Member, Kiwanis, Veterans of Foreign Wars. He and his wife Lucy have five children.

DONOHUE, HUBERT F. (Democrat) Senator from the 11th District comprising Asotin, Columbia, Garfield and part of Walla Walla counties. He is serving his first session. Born in 1921 in Dayton. Attended, Washington State University, is a farmer. Member, Eagles, Elks, American Legion, Washington Wheat Association, Farm Bureau, Christian Church, Washington Cattlemen's Association. He and his wife Evelyn have four sons.



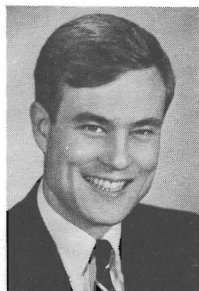
SENATORS

DORE, FRED H. (Democrat) Senator from the 37th District of King County, served seven terms in the House and is serving his sixth session in the Senate. Served as Interim Committee Chairman of Education Committee (1962-64); Chairman of the Interim Committee on Facilities and Operations, (1964-66). Attended, Seattle University; graduate, Georgetown Foreign Service School and Georgetown Law School, is an attorney. He and his wife Mary have five children.



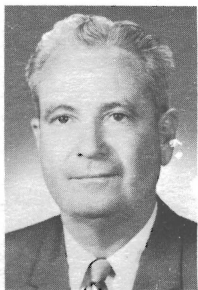
DURKAN, MARTIN J. (Democrat) Senator from the 47th District of King County. Served one term in the House and will be serving his 6th Session in the Senate. Born in 1924 in Great Falls, Montana. Graduate, University of Washington Law School, is an attorney. Veteran of WW II. He and his wife Lorraine have seven children.

ELICKER, CHARLES W. (Republican) Senator from the 10th District comprising Island and part of Kitsap Counties. Served one term in the House and is serving his first term in the Senate. Born in 1926 in Pittsburgh. Graduate, University of Washington with LL.B. and University of Michigan with LL.M. degrees, is an attorney and owner of a sanitarium. Was in the Naval Reserve for 20 years. He is a former chairman of the local school board. Member, Delta Tau Delta, Rotary, College Club, and American Legion. He and his wife Marion have four children.



FAULK, LAWRENCE JOHN (Republican) Senator from the 26th District of Pierce County. Is serving his second session. Born in Tacoma. Graduate, Seattle University majoring in Political Science. Served in the United States Army. Member, Elks; Charter Member, Design For Progress Committee. He and his wife Mary have two children.

SENATORS



FOLEY, FRANK W. (Democrat) Senator from the 49th District of Clark County, is serving his 7th Session. Born in 1913 in Spokane. Graduate, Washington State University with a B.A. degree and Gonzaga Law School with LL.B., is an attorney. Was a Lt. Col. in the Army during WW II. Member, American Legion, Elks. He is married and his wife's name is Betty.

GISSBERG, WILLIAM A. (Democrat) Senator from the 39th District of Snohomish County, is serving his 9th Session. Has served as President Pro-Tem of the Senate. Born in 1922 in Everett. Graduate, University of Washington, is an attorney. Member, Moose, Elks. He and his wife Helen have five children.



GREIVE, R. R. (BOB) (Democrat) Senator from the 34th District of King County, is serving his 13th Session. Born in 1919 in West Seattle. Attended, Seattle University and University of Washington, and Graduate, Miami University School of Law, he is an attorney. Served in the Coast Guard during WW II. Member, Lions, American Legion. He and his wife Barbara Ann have six children.

GUESS, SAM C. (Republican) Senator from the 6th District of Spokane County, is serving his 4th Session. Born in 1909 in Greenwood, Mississippi. Graduate, University of Mississippi with B.S. in Civil Engineering. Served with the First U. S. Army in Europe. Member, Sigma Nu fraternity. He and his wife Dorothy have two children.



SENATORS

HENRY, AL (Democrat) Senator from the 17th District comprising Klickitat, Skamania, and part of Clark County. Served four terms in the House and is serving his 7th Session in the Senate. Born in Ness County, Kansas. Attended, business school, is a Telephone Company Executive. Served in WW II and National Guard. Past-president, Eagles; member, Elks. He and his wife Ann have three children.



HERR, GORDON (Democrat) Senator from the 31st District of King County, served one term in the House and is serving his 4th Session in the Senate. Born in 1926 in Seattle. Attended, University of Washington, is in manufacturing and retail lumber business. Served in the Air Force during WW II. Member, Elks, Knights of Columbus, American Legion. He and his wife Patricia have five children.

HOLMAN, FRANCIS E. (Republican) Senator from the 1st District of King County, served one term in the House and is serving his first Session in the Senate. Born in 1915 in Salt Lake City. Graduate, Stanford University with A.B., Oxford University with M.A., and Harvard Law School with LL.B., is a lawyer. Served in WW II and Korean War. Former Mayor, Lake Forest Park; Member, Shoreline School Board, Metro Council, Uniform Law Commission. He and his wife Eloise have three children.



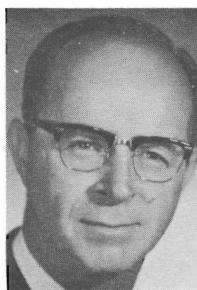
HUNTLEY, ELMER C. (Republican) Senator from the 9th District comprising Whitman, Lincoln, and Adams Counties, served five terms in the House and is serving his second Session in the Senate. Born in 1915 in St. John, Washington. Attended, Washington State University, is a farmer. Member, Masons, Methodist Church, Grange, Farm Bureau, Agricultural Commodity Groups, Chamber of Commerce. He is married and his wife's name is Necia.

SENATORS



KEEFE, JAMES EDWARD (Democrat) Senator from the 3rd District of Spokane County, is serving his 12th Session in the Senate. Born in 1908 in New York City. Graduate, Gonzaga High School, is employed as a sales manager. Member, Elks, Moose. He and his wife Eileen have two sons.

KNOBLAUCH, REUBEN A. (Democrat) Senator from the 25th District of Pierce County, served three terms in the House and is serving his 9th Session in the Senate. Born in 1914 in Sumner. Graduate, Sumner High School, is a retired farmer. Member, Veterans of Foreign Wars, American Legion, Elks, Kiwanis, and Grange. He is unmarried.



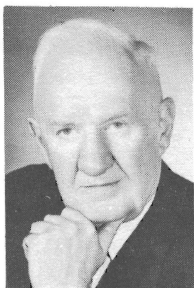
LEWIS, BRIAN J. (Republican) Senator from the 41st District of King County, served one term in the House and is serving his first session in the Senate. Born in 1929 in Essex, England. Graduate, University of Durham, England with B.Sc. in Civil Engineering and Graduate Certificate in Public Health Engineering, University of California at Los Angeles with M.S., is a Consulting Engineer. Member, Rotary, Chamber of Commerce, Good Roads Association, and Municipal League. He and his wife Elaine have five children.

LEWIS, HARRY B. (Republican) Senator from the 22nd District of Thurston County, served two terms in the House and is serving his third session in the Senate. Born in 1927 in Pittsburgh. Attended, University of Puget Sound, and Graduate, University of Washington. He is owner and manager of Wood Fabricators, Inc. Served in the Army during WW II. Member, Society of American Foresters, Elks, Phi Delta Theta, American Legion. He and his wife Jane have three children.



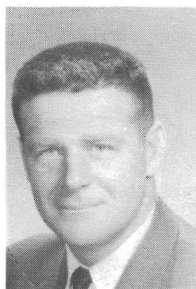
SENATORS

McCORMACK, MIKE (Democrat) Senator from the 16th District comprising Franklin and part of Benton Counties, served two terms in the House and is serving his 5th session in the Senate. Born in 1921 in Ohio. Graduate, Washington State University with M.A. degree in Chemistry, is employed as a Research Scientist by Battelle-Northwest at Hanford. Member, Masonic Lodge, Shrine, Sigma Chi, American Legion, Grange, and American Nuclear Society. He and his wife Margaret have three children.



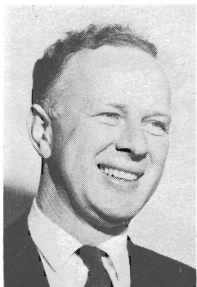
McCUTCHEON, JOHN T. (Democrat) Senator from the 29th District of Pierce County, served one term in the House and is serving his 12th session in the Senate. Born in 1892 in Tacoma. Attended, University of Washington and graduate, Indiana University Law School, is a lawyer. Member, Eagles, and Grange. He and his wife Tina have three children.

McDOUGALL, R. D. (BOB) (Republican) Senator from the 12th District comprising Chelan and Douglas Counties, served four terms in the House and is serving his first session in the Senate. Born in 1924 in Cashmere. Graduate, Wenatchee Valley College and Washington State University, is a fruit grower and warehouse manager. Served in the Navy in WW II. Member, Elks, Masons, American Legion, and Grange. He and his wife Jackie have three sons.



MARDESICH, AUGUST P. (Democrat) Senator from the 38th District of Snohomish County, served seven terms in the House and is serving his 4th session in the Senate. Born in 1920 in San Pedro, California. Graduate, University of Washington Law School, is an attorney and commercial fisherman. He and his wife Rosemary have six children.

SENATORS



MARQUARDT, RICHARD G. (DICK) (Republican) Senator from the 45th District of King County, is serving his second session. Born in Coeur d'Alene, Idaho. Attended, University of Washington, served in WW II, and worked for the Federal Government as a Business Analyst, is employed by the Humble Oil and Refining Company. He and his wife Beth have three children.

MATSON, JIM (Republican) Senator from the 14th District in Yakima County, is serving his first session. Born in 1927 in Yakima. Attended, Whitman College and Yakima Valley College, is in the fruit growing, packing, and shipping business. Veteran of WW II. Member, Elks, Kiwanis, and Chamber of Commerce. He and his wife Barbara have three sons.



METCALF, JACK (Republican) Senator from the 21st District of Snohomish County. Served two terms in the House and is serving his second session in the Senate. Born in Marysville. Graduate, Pacific Lutheran University with B.A., is a high school teacher of history, mathematics, and science. Member, PTA, Edmond's Rod and Gun Club, Lynnwood Kiwanis, Volunteers of America Board. He and his wife Norma have five daughters.

NEWSCHWANDER, CHARLES E. (Republican) Senator from the 28th District of Pierce County, served four terms in the House and is serving his first session in the Senate. Born in 1920 in Tacoma. Attended, University of Puget Sound and Graduate, University of Oregon Dental School, is a dentist. Served in WW II and Korean War. Member, Masons, Scottish Rite, and Lions. He and his wife Emma have four children.



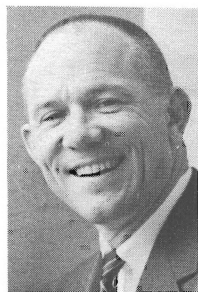
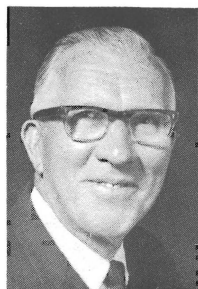
SENATORS

ODEGAARD, GARY M. (Democrat) Senator from the 20th District comprising Lewis and part of Grays Harbor counties, is serving his first session. Born in 1940 in Bellingham. Graduate, Western Washington State College with B.A. in Education and fifth year at University of Washington, is a teacher. Member, Alpha Grange, Onalaska Education Association, and International Reading Association. He and his wife Kay have two sons.



PETERSON, LOWELL (Democrat) Senator from the 40th District comprising San Juan and Skagit Counties, he is serving his 2nd session. Born in 1921 in Pateros, Washington, is an oil distributor. Served in the Navy in WW II. Member, American Legion, Eagles and Elks. He and his wife Ruth have three children.

PETERSON, TED G. (Republican) Senator from the 44th District of King County, is serving his 6th Session. Born in 1904 in Seattle. Attended, University of Washington, is President of a wholesale equipment and supply house. Member, Masons, Shrine, Lions International, and Elks. He and his wife Ruth have two children.



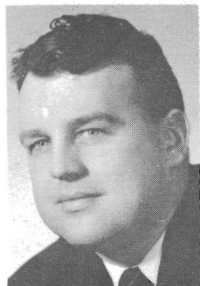
PRITCHARD, JOEL M. (Republican) Senator from the 36th District of King County, served four terms in the House and is serving his second session in the Senate. Born in 1925 in Seattle. Attended, Marietta College, Ohio, and is Manager of Griffin Envelope Company. Served in the infantry during WW II. He and his wife Joan have four children.

SENATORS



RIDDER, ROBERT (BOB) (Democrat) Senator from the 35th District of King County, is serving his second session. Born in Bellingham. Graduate, University of Washington with B.S. degree and graduate study at U of W and Seattle University, is vice-principal of a junior high school. Served in the infantry and medical corps. Community activities include church, Boys Club, Boy Scouts, American Legion, PTA, and political clubs. He and his wife Ruth have five children.

RYDER, JOHN N. (Republican) Senator from the 46th District of King County, served one term in the House and is serving his 8th session in the Senate. Born in 1907 in Seattle. Graduate, Rutgers University Graduate School of Banking, is a banker. Member, Ravenna Lodge F. and A.M. He and his wife Margaret have three children.



SANDISON, GORDON (Democrat) Senator from the 24th District comprising Clallam, Jefferson, and Mason Counties, served five terms in the House and is serving his 6th session in the Senate. Born in 1919 in Auburn. Graduate, University of Washington, is an Insurance Broker and Realtor. Served in the Marines during WW II. Member, Elks, Eagles, VFW, Grange, American Legion, Alpha Tau Omega. He and his wife Muriel have five children.

STENDER, JOHN H. (Republican) Senator from the 30th District of King County, is serving his 4th session. Born in 1916 in Montana. International Vice-President, Boilermakers and Blacksmiths International Union. Member, Eagles, and F.A.M. He and his wife Ida have four children.



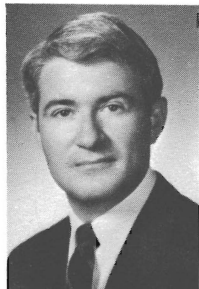
SENATORS

STORTINI, JOE L. (Democrat) Senator from the 27th District of Pierce County, is serving his first session. Born in 1932 in Tacoma. Graduate, University of Puget Sound with B.A. in Education and Oregon State University with M.A. in Education, is a teacher and coach. Member, Elks, Bellarmine Boosters. He and his wife Carol have three children.



TALLEY, DON L. (Democrat) Senator from the 18th District comprising Cowlitz and Wahkiakum Counties, is serving his 7th session. Born in 1918 in Tacoma. Graduate, high school, is employed as a Safety Supervisor for the Port of Longview. Served in the Navy during WW II. Member, Masons, Elks, Moose, Eagles, American Legion, and D.A.V. He and his wife Delores have four children.

TWIGG, ROBERT W. (Republican) Senator from the 7th District of Spokane County, is serving his second session. Born in Seattle. Graduate, Whitman College with A.B. degree and Gonzaga Law School, is a lawyer. Served in the U.S. Navy in WW II. He is married and his wife's name is Margaret.



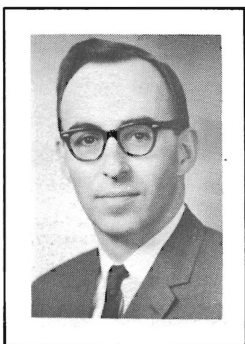
UHLMAN, WESLEY C. (Democrat) Senator from the 32nd District of King County, served four terms in the House and is serving his second session in the Senate. Born in 1935 in Cashmere. Attended, Seattle Pacific College and graduate, University of Washington Law School, is a lawyer. Captain, Washington State National Guard; Member, North Central Kiwanis, Theta Delta Chi, Pi Sigma Alpha, and Phi Alpha Delta Fraternities. He and his wife Laila have two sons.

SENATORS



WALGREN, GORDON LEE (Democrat) Senator from the 23rd District of Kitsap County, served one term in the House and is serving his first session in the Senate. Born in 1933 in Bremerton. Graduate, University of Washington with B.A. and J.D. degrees, is an attorney. Member, Elks, Kiwanis, Masonic Orders, Delta Upsilon fraternity, UGN Board of Directors, Government Appeals Officer Selective Service Board; Past Chairman, Heart Association. He and his wife Sue have two children.

WASHINGTON, NAT W. (Democrat) Senator from the 13th District comprising Grant and Kittitas counties. Served one term in the House and is serving his 10th session in the Senate. Born in 1914 in Coulee City. Graduate, University of Washington Law School, is an attorney. Served in the Air Force in WW II. Member, Grange, Masonic Lodge. He and his wife Wanda have two sons.



WILLIAMS, WALTER B. (Republican) Senator from the 43rd District of King County, served one term in the House and is serving his 4th session in the Senate. Born in 1921 in Seattle. Graduate, University of Washington and Harvard Law School, is engaged in mortgage and banking business. Served in the Marine Corps in WW II. He and his wife Marie have four children.

WILSON, BRUCE A. (Democrat) Senator from the 2nd District comprising Okanogan, Ferry, Stevens and Pend Oreille counties, is serving his first session. Born in 1921 in Chicago. Graduate, Northwestern University with B. S. degree, is a newspaper publisher. Past-president, Omak Chamber of Commerce; Past-president, Okanogan County Historical Society; Director, Omak Stampede; Member, Kiwanis, American Legion. He and his wife Merilynn have four children.

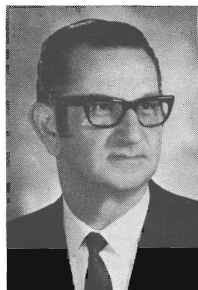


SENATORS

WOODALL, PERRY B. (Republican) Senator from the 15th District of Yakima County, served six terms in the House (three as Floor Leader) and is serving his 8th session in the Senate. Born in 1912 in Buena. Graduate, Yakima Valley Junior College and University of Washington with LL.B., is a lawyer and farmer. Served in the Navy in WW II. Member, Elks, Eagles, American Legion, Grange, and Farm Bureau. He and his wife Joy have a daughter.

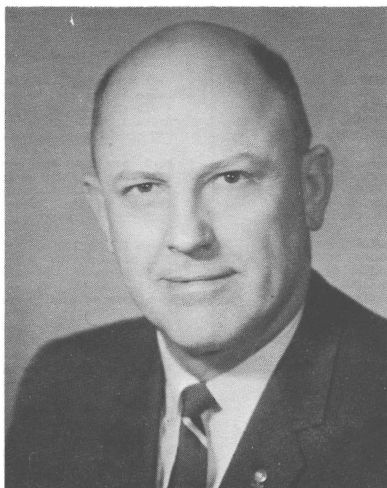


BOWDEN, WARD (Democrat) Secretary of the Senate, is from the 22nd District of Thurston County. Worked in the House of Representatives from 1933 through 1955. Was Assistant Chief Clerk in 1941, 1943, 1951, and 1955. Will be serving his 7th session as Secretary of the Senate. Born in 1912 in Everett. He is a graduate of Everett High School. Member of the Elks Club. He and his wife Doris Anne have seven children.



JOHNSON, CHARLIE (Democrat) Sergeant-at-Arms of the Senate from the 22nd District of Thurston County, is serving his 7th session. A member of the House in 1951, he served as Sergeant-at-Arms of the House in 1955. Born in 1911 in Elko, Wyoming. He is a factory representative for Midland Laboratories. Member, Eagles, Elks, and Washington Athletic Club.

HOUSE OF REPRESENTATIVES OF THE STATE OF WASHINGTON



Don Eldridge
Speaker of the House

Don Eldridge (Republican) is serving his second term as Speaker of the House. State Representative from the 40th District, is serving his 9th term. Born in 1919 in Mount Vernon, he graduated with a B.A. in Education from Western Washington State College. He is a retail merchant in Mount Vernon.

ROSTER OF MEMBERS

House of Representatives 99 MEMBERS (56 REPUBLICANS, 43 DEMOCRATS)

DIST.	PARTY	NAME	ADDRESS
26	D	ADAMS, A. A.	3418 Shorecliff Dr. N.E., Tacoma 98422
9-B	R	AMEN, OTTO	Route 1, Box 45, Ritzville 99169
19	D	ANDERSON, ERIC O.	627 Grand Avenue, Hoquiam 98550
39	D	BACKSTROM, HENRY G.	516 Olympic, Arlington 98223
35	D	BAGNARIOL, JOHN	10450 61st Ave. So., Seattle 98178
30	R	BARDEN, PAUL	1112 S. 168th, Seattle 98148
23	D	BECK, C. W. (RED)	Route 5, Box 15, Port Orchard 98366
8-B	R	BENITZ, MAX	Route 2, Box 181, Prosser 99350
40	R	BERENTSON, DUANE	P. O. Box 426, Burlington 98233
13	R	BLEDSE, STEWART	Route 3, Box 60-B, Ellensburg 98926
1	R	BLUECHEL, ALAN	12534 68th N.E., Kirkland 98033
29	D	BOTTIGER, R. TED	8849 Pacific Ave., Tacoma 98444
12	D	BOZARTH, HORACE W.	Mansfield 98830
25	D	BROUILLET, FRANK (BUSTER)	619 7th Ave. S.W., Puyallup 98371
1	R	BROWN, ART	16020 Densmore No., Seattle 98133
34	D	CECCARELLI, DAVE	3823 42nd S.W., Seattle 98116
48	R	CHAPIN, RICHARD U.	4408 95th Ave. N.E., Bellevue 98004
19	D	CHARATTE, ROBERT L. (BOB)	P. O. Box 63, Aberdeen 98520
33	D	CHATALAS, WILLIAM (BILL)	2802 33rd So., Seattle 98144
43	R	CLARK, NEWMAN	1625 IBM Building, Seattle 98101
41	R	CLARKE, GEORGE W.	1111 Hoge Bldg., Seattle 98104
24	D	CONNER, PAUL H.	Route 3, Box 472, Sequim 98382
22	R	CONWAY, FLOYD R.	Route 11, Box 340, Olympia 98501
11-B	R	COPELAND, THOMAS L.	Route 3, Walla Walla 99362
30	R	CUNNINGHAM, NORWOOD	750 Alvord Ave., Kent 98031
12	R	CURTIS, ROBERT (BOB)	P. O. Box 0188, East Wenatchee 98801
18	D	DeJARNATT, ARLIE U.	1215 23rd Ave., Longview 98632
40	R	ELDRIDGE, DON	510 First St., Mount Vernon 98273
16-A	R	EVANS, C. E.	1926 W. 3rd Ave., Kennewick 99336
42	R	FARR, CAS	1800 "C" St., Bellingham 98225
13	R	FLANAGAN, S. E. (SID)	Route 1, Box 205, Quincy 98848
37	D	FLEMING, GEORGE	1612 Grand Avenue, Seattle 98122
32-B	D	FRANCIS, PETE	4324 Dayton No., Seattle 98103
29	D	GALLAGHER, P. J. (JIM)	125 S. 72nd St., Tacoma 98408
47	D	GARRETT, AVERY	450 Langston Road, Renton 98055
7	R	GLADDER, CARLTON A.	501 Fidelity Bldg., Spokane 99201
9-A	R	GOLDSWORTHY, ROBERT F.	Route 2, Rosalia 99170
47	D	GRANT, GARY	12835 S.E. 160th, Renton 98056
7	R	HARRIS, EDWARD F.	716 Old National Bank Bldg., Spokane 99203
14	R	HATFIELD, CHET	220 E. Yakima Ave., Yakima 98901
2-A	D	HAUSSLER, JOE D.	Box 949, Omak 98841
44	R	HAWLEY, DWIGHT S.	2208 N.W. Market St., Seattle 98107
31	D	HEAVEY, EDWARD	9829 16th S.W., Seattle 98106
21	R	HOGGINS, DALE E.	21826 95th Ave. W., Edmonds 98020
11-A	R	HUBBARD, VAUGHN	Box 126, Waitsburg 99361
3	D	HURLEY, MRS. JOSEPH E.	730 E. Boone, Spokane 99202
20	D	JASTAD, ELMER	Box 38, Morton 98356
16-B	D	JOLLY, DAN	Box 185, Connell 99326
28	R	JUELING, HELMUT L.	5215 S. Tacoma Way, Tacoma 98409
41	R	JULIN, AXEL C.	4615 Lake Wash. Blvd. S.E., Bellevue 98004

ROSTER OF MEMBERS

House of Representatives 99 MEMBERS (56 REPUBLICANS, 43 DEMOCRATS)

DIST.	PARTY	NAME	ADDRESS
20	D	KALICH, HUGH	Route 1, Toledo 98591
38	D	KING, RICHARD	309 77th Place S.W., Everett 98202
42	D	KINK, DICK J.	1124 15th St., Bellingham 98225
36	R	KIRK, GLADYS F.	1236 Bigelow No., Seattle 98109
21	R	KISKADDON, BILL	4404 242nd S.W., Mountlake Terrace 98043
6	R	KOPET, JERRY C.	1728 S. Lincoln St., Spokane 99203
4	R	KUEHNLE, JIM (KEENLY)	E. 12415 Trent, Spokane 99216
31	R	LECKENBY, WILLIAM S.	9105 Fauntleroy Way S.W., Seattle 98116
48	R	LELAND, AL	P. O. Box 715, Redmond 98052
45	D	LITCHMAN, JR., MARK	13706 2nd N.E., Seattle 98125
14	R	LYNCH, MARJORIE	802 Pickens Road, Yakima 98902
32-A	R	McCAFFREE, MARY ELLEN	5014 18th N.E., Seattle 98105
5-A	D	McCORMICK, GERALDINE	W. 3909 Lyons, Spokane 99208
46	R	MAHAFFEY, AUDLEY F.	5241 16th N.E., Seattle 98105
49	D	MARSH, DANIEL G.	1111 Broadway, Vancouver 98660
38	D	MARTINIS, JOHN	2304 8th St., Everett 98201
27	D	MARZANO, FRANK	2501 So. Melrose St., Tacoma 98405
3	D	MAY, WILLIAM J. S. (BILL)	W. 711 Waverly Pl., Spokane 99205
10	R	MENTOR, JOE	Route 4, Box 2350, Bremerton 98310
35	D	MERRILL, JOHN	7530 S. Lakeridge Dr., Seattle 98178
39	D	MOON, CHARLES	Route 2, Box 427A, Snohomish 98290
15	R	MORRISON, SID W.	Route 1, Box 220AA, Zillah 98953
36	R	MURRAY, JOHN S.	8 W. Roy St., Seattle 98119
8-A	R	NEWHOUSE, IRVING	Route 1, Box 130, Mabton 98935
44	R	NORTH, LOIS	10023 Vinton Court N.W., Seattle 98177
33	D	O'BRIEN, JOHN L.	912 Joseph Vance Bldg., Seattle 98101
17	R	O'DELL, ROBERT	605 N.E. 5th Ave., Camas 98607
6	R	PARDINI, A. J. (BUD)	E. 1625 20th Ave., Spokane 99203
45	D	PERRY, ROBERT A.	1154 No. 92nd, Seattle 98103
23	D	RANDALL, ROBERT W.	3040 Marine Drive, Bremerton 98313
4	R	RICHARDSON, GORDON W.	N. 2314 Coleman Road, Spokane 99206
34	D	ROSELLINI, JOHN M.	3827 38th S.W., Seattle 98126
5-B	R	SALING, GERALD L.	W. 320 Nebraska, Spokane 99208
24	D	SAVAGE, CHARLES R.	2011 King St., Shelton 98584
25	D	SAWYER, LEONARD A.	755 So. Tacoma Ave., Tacoma 98402
2-B	R	SCHUMAKER, WILLIAM (BILL)	Route 2, Box 77A, Colville 99114
46	R	SCOTT, GEORGE W.	2530 N.E. 105th Place, Seattle 98125
28	R	SHERA, NED	8516 130th S.W., Tacoma 98498
49	R	SMYTHE, RICHARD L.	7115 Topeka Lane, Vancouver 98661
15	R	SPANTON, KEITH J.	3803 4th St., Union Gap 98903
37	D	SPRAGUE, DAVID G.	805 Logan Bldg., Seattle 98101
26	R	SWAYZE, JR., THOMAS A.	3408 No. 24th, Tacoma 98406
18	D	THOMPSON, ALAN	310 Estey Drive, Castle Rock 98611
42	R	VEROSKE, FRED A.	723 17th St., Bellingham 98225
10	R	WANAMAKER, F. (PAT)	Route 1, Box 193A, Coupeville 98239
43	R	WHEITZEL, JONATHAN	1411 4th Ave. Bldg., Seattle 98101
27	D	WOJAHN, LORRAINE	3592 East "K" St., Tacoma 98404
22	R	WOLF, HAL	Clark Road, Yelm 98597
17	R	ZIMMERMAN, HAROLD S.	1432 N.E. 6th, Camas 98607

REPRESENTATIVES



ADAMS, A. A. (Democrat) Representative from the 26th district of Pierce County, is serving his first term. Born in 1900 in Bellingham. Graduate, Palmer College of Chiropractic, Davenport, Iowa. Past-president, American Chiropractic Association, past vice-president of International Chiropractic Association. Member and past-chairman, Tacoma Utility Board. Member, Board of Directors of Boys Clubs of America, Chamber of Commerce and Masonic bodies. He and his wife, Mildred, have one child.

AMEN, OTTO (Republican) Representative from Legislative District 9-B comprising Adams and Lincoln counties is serving his second term. Born in 1912 in Ritzville. Graduate, W.S.U. with a B.S. in Pharmacy, is engaged in farming. Member, Grange, Lions International, and Chamber of Commerce. Served as President of Washington State Wheat Association, Washington Wheat Commission, and State Coordinator of Food for Peace. He and his wife Doris have two sons.



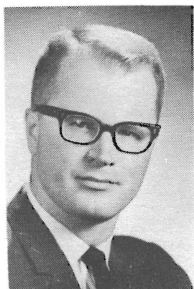
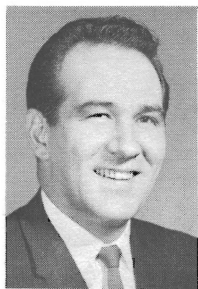
ANDERSON, ERIC O. (Democrat) Representative from the 19th District comprising Pacific and part of Grays Harbor Counties, is serving his 5th term. Born in New Zealand. Is a high school graduate and former logging engineer, construction foreman, and flood-control supervisor. Member, Grange, Masons, Eastern Star, and I.W.A. Timber Workers. He and his wife Ida May have two children.

BACKSTROM, HENRY (Democrat) Representative from the 39th district of Snohomish County, is serving his sixth term. Native of New Britain, Connecticut. Educated at Olds College of Agriculture and Edison Institute, is in the real estate investment and insurance business. Member, Elks, Moose, Lions, WAC, Past Executive-Governor of Lions International, chairman, WSAD Insurance Association. He and his wife, Elvira, have three children.



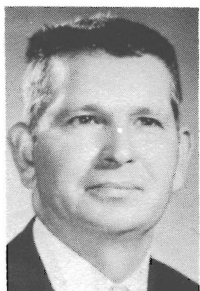
REPRESENTATIVES

BAGNARIOL, JOHN (Democrat) Representative from the 35th district of King County, is serving his second term. Born in 1932 in Renton. Graduate of Franklin High School. Member St. Paul's Men's Club, Scouting, Kiwanis, and Rainier Beach Community Club. He is currently self-employed as an insurance agent. He and his wife, Edna, have eight children.



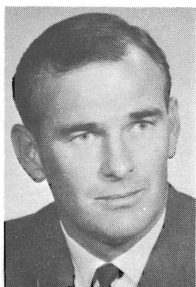
BARDEN, PAUL (Republican) Representative from the 30th district of King County, is serving his second term. Born in 1936 in Seattle. Attended the University of Washington and is a banker. Served as a Sargent in the Marine Corp. Member, Young Republicans, Kiwanis, JayCee's, and Federal Way, Kent and Burien Chambers of Commerce. He and his wife, Jamel, have two boys.

BECK, CLIFFORD W. (RED) (Democrat) Representative from the 23rd district of Kitsap County, is serving his fifth term. Born in 1907 in Bloomington, Indiana. Attended Stanford University and is self-employed as a property manager. Served in the Navy and is a retired Naval Ordnance Engineer. Member, Elks, Eagles, Kiwanis, D.A.V.'s Reserve Association, and South Kitsap Chamber of Commerce. He is married and his wife's name is Hope Grace.



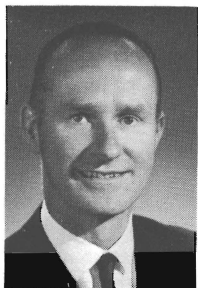
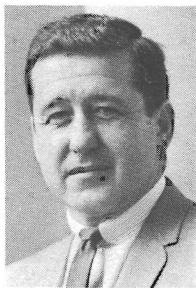
BENITZ, MAX E. (Republican) Representative from District 8-B of Benton County, is serving his first term. Born in 1916 in Wathena, Kansas. He is self-employed as a rancher. Past-president of the Washington State Farm Bureau Federation; Past member, board of directors of the National Farm Bureau; Past school board member, and member board of directors of the Benton-Franklin County Fair. He and his wife, Marie, have five children.

REPRESENTATIVES



BERENTSON, DUANE (Republican) Representative from the 40th district comprising San Juan and Skagit counties, is serving his 4th term. Born in 1928 in Anacortes. Graduate, Pacific Lutheran University, he is a broker-dealer in securities. He and his wife, Joanne, have five children.

BLEDSON, STEWART (Republican) House Majority Leader from the 13th district, comprising Grant and Kittitas counties, is serving his third term. Born in 1922 in California. Attended UCLA and graduated from WSU. Enlisted as a fighter pilot in WW II, he is a rancher, raising Angus cattle and quarterhorses. Past-president, Ellensburg Rodeo. He and his wife, Betsy, have four children.



BLUECHEL, ALAN (Republican) Representative from the 1st district of King county, is serving his second term. Born in 1924 in Edmonton, Alberta, Canada. Received a B.A.Sc. in electrical engineering, and a B.A. in General Studies from the University of British Columbia. Member, King County Flood Control Advisory Board, World's Fair Commission-Expo 70, Osaka, Japan, Washington State Trade Fair Mission in 1965 and 1966. He is president of Loctwall Corporation. He and his wife, Aylene, have two sons.

BOTTIGER, R. TED (Democrat) Representative from the 29th District of Pierce County, is serving his third term. Born in 1932 in Tacoma. Graduate, University of Puget Sound with a B.A. degree and University of Washington Law School, he is an attorney. He and his wife Darlene have three children.



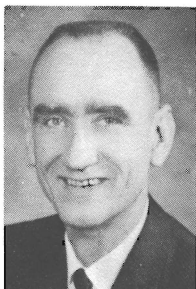
REPRESENTATIVES

BOZARTH, HORACE W. (Democrat) Representative from the 12th district comprising Chelan and Douglas counties, is serving his 8th term. Born in Fairfield, Washington. Graduate, Gonzaga University with a B.A. degree, he is a business man and a farmer. Member, Board of Regents of Gonzaga University, Executive Board of the Washington State Grange, and Eagles Lodge. He is married and his wife's name is Christine.



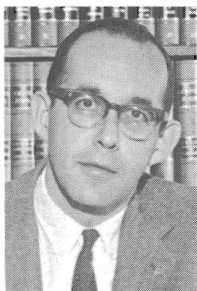
BROUILLET, FRANK BUSTER (Democrat) Representative from the 25th District of Pierce County, is serving his 7th term. Born in 1928 in Puyallup. Graduate, University of Puget Sound with B.A. and M.A. degrees and University of Washington with doctoral degree. Served in U. S. Army Counterintelligence Corp. Chairman, Interim Committee on Education. Member, Community College Faculty, Elks. Grange, Masons, and Sigma Chi fraternity. He and his wife Marge have two sons.

BROWN, ARTHUR C. (Republican) Representative from the 1st District of King County, is serving his first term. Born in 1921 in Atlanta, Georgia. Graduate, University of Washington. A retired Lt. Comdr. from the U.S. Navy, he is currently employed by Boeing. Past-President, Washington Association of County Boards of Education. Member, Board of Trustees, Shoreline Public Library, Community Development Council of Shoreline and Citizens Advisory Committee and Election Planning Committee for the Shoreline School District. He and his wife Ann have five children.



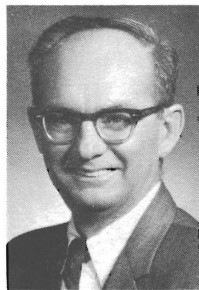
CECCARELLI, DAVE (Democrat) Representative from the 34th District of King County, is serving his second term. Graduate, Seattle University with B.C.S. in Commerce and Finance, he is District Manager of Libby-McNeill and Libby Company. President, West Seattle Council on Youth Affairs. Member, Seattle-King County Council on Alcoholism, Knights of Columbus, West Seattle Chamber of Commerce. He and his wife Lois have four sons.

REPRESENTATIVES



CHAPIN, RICHARD U. (Republican) Representative from the 48th District of King County, is serving his 2nd term. Born in 1929 in New York. Graduate, University of Michigan and Columbia Law School, he is an attorney. Past-chairman, King County March of Dimes; member, Fiscal Committee of Bellevue School Board, Seattle Committee on Alcoholism, Board of Management East-side YMCA, and Kiwanis. He and his wife Hope have three children.

CHARETTE, ROBERT L. (Democrat) Representative from the 19th District comprising Pacific and Grays Harbor (part) counties. Served two terms in the Senate and is serving his second term in the House. Born in 1923 in Aberdeen. Graduate, Grays Harbor Junior College and University of Washington Law School, he is a partner in a law firm. Member, Phi Kappa Psi, Phi Delta Phi, Grays Harbor and American Bar Association, Eagles, Elks, VFW, and Military Order Purple Heart. He and his wife Betty have three daughters.



CHATALAS, WILLIAM (BILL) (Democrat) Representative from the 33rd District of King County, is serving his 5th term. Born in 1907 in Istanbul, Turkey. Attended, University of Washington Extension School, he is President of a real estate and insurance firm. Member, National Board of Directors, Muscular Dystrophy Association, Mt. Baker Improvement Club, Rainier Businessmen's Club, Chamber of Commerce, Municipal League, Eagles, Order of Ahepa, Teamsters, Forward Thrust, Legislative Budget Interim Committee. He and his wife Goldie have three sons.

CLARK, NEWMAN H. (Republican) Representative from the 43rd District of King County, is serving his 8th term. Graduate, University of Washington School of Law. A lawyer since 1923. Served three terms as Floor Leader. Chairman, Judiciary Committee and Legislative Council. He and his wife Marian have two grown sons.



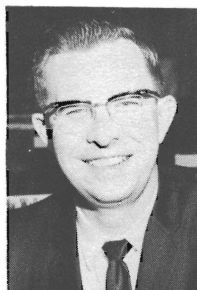
REPRESENTATIVES

CLARKE, GEORGE W. (Republican) Representative from the 41st District of King County, is serving his second term. Born in 1906 in Perry, Iowa, he is an attorney and general manager of an Insurance Rating Bureau. Served as a naval officer in World War II. Served 20 years, Mercer Island School Board; Member, Mercer Island Community Club, Seattle Chamber of Commerce, and Rotary. He and his wife Helen have three children.



CONNER, PAUL H. (Democrat) Representative from the 24th District comprising Clallam, Mason, and Jefferson Counties. Appointed to the Senate in 1957, is now serving his 6th term in the House. Born in 1925 in Port Angeles. Attended, Port Angeles Business College, Western Washington State College and University of Washington. He and his wife Thelma have four children.

CONWAY, FLOYD (Republican) Representative from the 22nd District of Thurston County, is serving his first term. Born in 1929 in Aberdeen. Graduate, St. Martin's College with a B.A. degree in Education, he is a teacher. Served four years in the Air Force. He and his wife Joan have five children.



COPELAND, THOMAS L. (Republican) Representative from the 11-B District comprising Asotin, Columbia, Garfield, and part of Walla Walla Counties, is serving his 7th term. Born in 1924 in Pendleton, Oregon. Attended, Kemper Military School and Washington State University, he is a farmer. Captain in the Army in World War II. Member, Elks, American Legion, Farm Bureau, Masons, Chamber of Commerce, and Sigma Nu Fraternity. He and his wife Dolly have three children.

REPRESENTATIVES



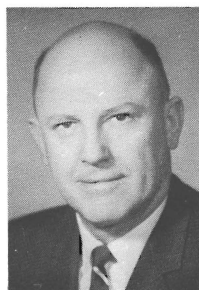
CUNNINGHAM, NORWOOD (Republican) Representative from the 30th District of King County, is serving his third term. Born in Sunnyside. Graduate, George Fox College and Post-graduate work at University of Oregon, San Diego State and Indiana University, is currently administrator for Kent Public Schools. Veteran World War II. Member, American Legion, Rotary Club, Seattle-King County Safety Council, WEA, and National Education Association. He and his wife Florence have two sons.

CURTIS, ROBERT (BOB) (Republican) Representative from the 12th District, comprising Douglas and Chelan Counties, is serving his first term. Born in 1933 in Wenatchee. Graduate, Pacific Lutheran University, he is the owner-manager of a supermarket. Past-president, Washington State Junior Chamber of Commerce; Chairman, Salvation Army Advisory Board. Member, UGN. He and his wife Patty have four children.



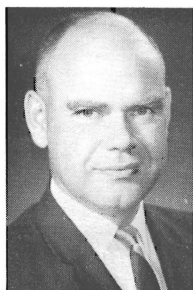
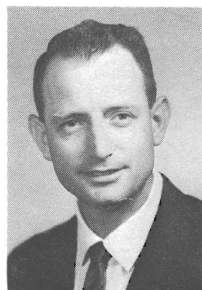
DeJARNATT, ARLIE U. (Democrat) Representative from the 18th District comprising Cowlitz and Wahkiakum counties, is serving his 5th term. Born in 1923 in Glenzen, Indiana. Graduate, Cornell College with A. B. degree and Colorado State College with a Master's degree, is a high school social studies teacher. Served three years in the Marine Corps. He and his wife Donna have five children.

ELDRIDGE, DON (Republican) Representative from the 40th District comprising San Juan and Skagit counties, is serving his 9th term and his second term as Speaker of the House. Born in 1919 in Mount Vernon. Graduated, WWSC with a B.A. in Education, he is a retail merchant. Past State President and U. S. Vice-President, Jaycees. Member, Rotary and Regional Committee Boy Scouts. He and his wife Harriett have four children.



REPRESENTATIVES

EVANS, C. E. "CHUCK" (Republican) Representative from District 16-A of Benton County, is serving his first term. Born in 1930 in Jackson, Mississippi. Graduate, Central Washington State College with B.A. and M.A. degrees and post-graduate work at WSU. Served in the U. S. Air Force during the Korean conflict. He is currently County Superintendent of Schools. President, Kiwanis Club; Chairman, UGN; Explorer-Advisor and Vice-President, Boy Scouts Council. President of Science Fair Association and Member of State Football and Basketball Officials Association. He and his wife Vi have four children.



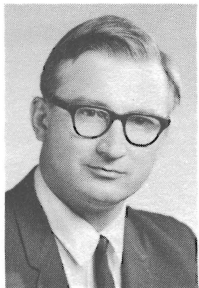
FARR, DR. CASWELL J. (Republican) Representative from the 42nd District of Whatcom County, is serving his 2nd term. Born in 1921 in Garfield. Attended Washington State University and graduated from the University of Washington with B.S. in chemistry, B.S. in public health, and DDS., and is a Dentist. Member, Advisory Board for Department of Public Assistance, State Comprehensive Health Planning Council, and Whatcom County Mental Health Board. He and his wife Marlys have two children.

FLANAGAN, SID (Republican) Representative from the 13th District comprising Grant and Kittitas Counties, is serving his 5th term. Born in 1909 in Bellingham. Graduate of the University of Washington, majoring in Public Utilities, he is a farmer and cattleman. Member, St. Pius Xth Catholic Church of Quincy. He and his wife Vyvian have three children.



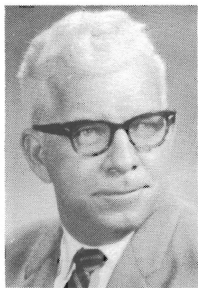
FLEMING, GEORGE (Democrat) Representative from the 37th District of King County, is serving his first term. Born in 1938 in Dallas. Graduate, University of Washington with a B.A. in Business Administration, he is employed as a Personnel Assistant at Pacific Northwest Bell Telephone. Member, Seattle Urban League, Junior Chamber of Commerce and Seattle Municipal League. He and his wife Tina have one daughter.

REPRESENTATIVES



FRANCIS, PETER D. (Democrat) Representative from District 32-B of King County, is serving his first term. Born in 1934 in Seattle. Graduate, Stanford University with a B. A. in Political Science and Stanford Law School with a LL.B. degree, is an attorney. President, Greenlake Chamber of Commerce; Elder, Woodland Park Presbyterian Church; member, Municipal League, Ballard Elks, YMCA. He and his wife Elva have two boys.

GALLAGHER, P. J. "JIM" (Democrat) Representative from the 29th District of Pierce County, is serving his 5th term. Born in 1915 in Taylor, Washington. Graduate, Washington State University, he is employed as a Public Relations Officer for Selland Auto Transport. Member, Knights of Columbus and Eagles. He and his wife Mabel have six children.



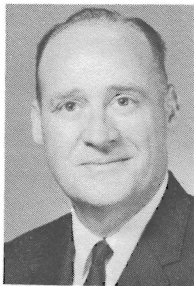
GARRETT, AVERY (Democrat) Representative from the 47th District of King County, is serving his 6th term. Born in Georgia, where he received his education. Member and President, Renton City Council. President, Sheet Metal Workers. Member, Board of Directors Association of Washington Cities, Renton PTA, Masons, and Bellevue Chamber of Commerce. He is employed by the Boeing Company. He and his wife Edna May have a son and three daughters.

GLADDER, CARLTON A. (Republican) Representative from the 7th District of Spokane County, is serving his second term. Born in 1909 in Atwater, Minnesota. Graduate, Drake University, Des Moines, Iowa, is in the life insurance business. Past President, Spokane Life Underwriters' Association; Past Governor, Gyro International; winner, National Quality Award; Boy Scouts, Speakers' Bureau. He and his wife Jeanne have three children.



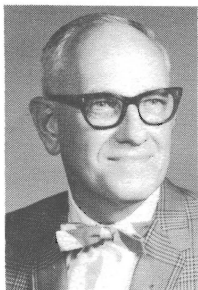
REPRESENTATIVES

GOLDSWORTHY, ROBERT F. (Republican) Representative from District 9-A of Whitman County, is serving his 7th term. Born in 1917 in Rosalia. Graduate, Washington State University with a B.A. degree, is a farmer. Served in World War II and in the Korean conflict. Member, Masons, American Legion, Military Order of World Wars, Order of Daedalians. He and his wife Jean have two children.



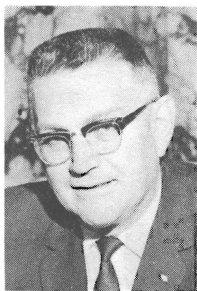
GRANT, GARY (Democrat) Representative from the 47th District of King County, is serving his 4th term. Born in 1934 in Chipewa Falls, Wisconsin. Graduate, St. Martin's College with B.A. in Industrial Relations, is employed in Labor Relations. Former member, Junior Chamber of Commerce and Toastmasters. He and his wife Tanya have four children.

HARRIS, EDWARD F. (Republican) Representative from the 7th District of Spokane County, is serving his 8th term. Born in 1909 in Harrison, Idaho. Graduate, University of Idaho School of Business and Gonzaga Law School, is a practicing attorney. He and his wife Phyllis have two children.



HATFIELD, CHET (Republican) Representative from the 14th District of Yakima County, is serving his 1st term. Born in 1911 in Yakima. Graduate, University of Washington majoring in advertising and qualified as a CPA, operates dress fabric shop. Former member, Yakima City School Board, and Yakima County School Reorganization Committee. Member, Lions, Masons, Elks. He and his wife Mary have four children.

REPRESENTATIVES



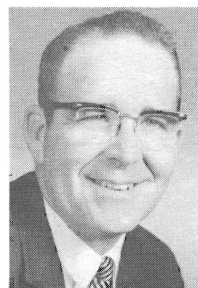
HAUSSLER, JOE D. (Democrat) Representative from District 2-A from Okanogan County, is serving his 4th term. Born in 1902 in Alvin, Texas. Former County Commissioner, a business man and orchardist. He and his wife Pearl have three children.

HAWLEY, DWIGHT S. (Republican) Representative from the 44th District of King County, is serving his 9th term. Born in 1896 in Ballard. Attended the University of Washington, is an owner-operator of insurance and real estate agencies. Purple Heart Veteran of World War I. Member, Elks, Eagles, Legion, VFW, YMCA, Kiwanis, Ballard Chamber of Commerce, Second Division Association, and Sunset Community Club. He and his wife Dorothy have three sons.



HEAVEY, EDWARD (Democrat) Representative from the 31st District of King County, is serving his 2nd term. Born in 1928 in Chicago. Graduate, University of Washington Law School with LL.B. degree, is an attorney. Served in the army. President, PTA, and active in Scouts. He and his wife Betty have four children.

HOGGINS, DALE E. (Republican) Representative from the 21st District of Snohomish County, is serving his 2nd term. Born in 1932 in White Swan. Graduate, Western Washington State College with B.A. degree and University of Washington with Masters in Education, is an Elementary Principal of Mountlake Terrace School. Member, Phi Delta Kappa, Edmonds Methodist Church, Mid-City Athletic Association, and Washington Education Association. He and his wife Donna have three children.



REPRESENTATIVES

HUBBARD, VAUGHN (Republican) Representative from District 11-A comprising of Asotin, Columbia, Garfield and Walla Walla (part) counties, is serving his 3rd term. Born in 1922 in Dayton. Graduate, WSU with a B.A. in Political Science and L.L.B. from the University of Washington Law School, is a lawyer. Served as a U. S. Navy Pilot during World War II. He and his wife Patricia have four children.



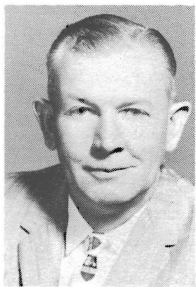
HURLEY, MRS. JOSEPH E. (Democrat) Representative from the 3d District of Spokane County, is serving her 9th term. Graduate, Holy Names College with Bachelor of Arts in Education, is a teacher and a homemaker. Member, Spokane Bar Association Auxiliary. She and her husband have four children.

JASTAD, ELMER (Democrat) Representative from the 20th District of Lewis County and Grays Harbor (part) is serving his third term. Born in Chehalis. Graduated from the School of Pharmacy, Washington State University and is a Pharmacist (self-employed). Mayor of Morton. Member Shrine, Masons, Eagles, and Elks. He and his wife Edna Mae have a son.



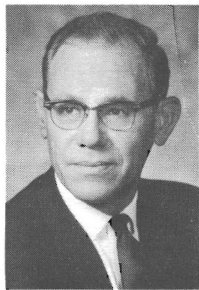
JOLLY, DAN (Democrat) Representative from District 16-B of Franklin County, is serving his 4th term. Born in 1907 in Douglas County, is a farmer. Officer, Washington State Grange. He and his wife Harriet have three married daughters.

REPRESENTATIVES



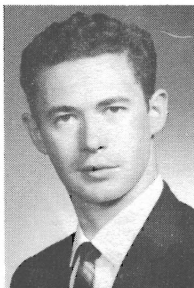
JUELING, HELMUT L. (Republican) Representative from the 28th District of Pierce County, is serving his 5th term. Born in 1913 in Loup City, Nebraska. Graduate, University of Puget Sound with a B.A. degree, is the owner of a laundry and linen supply firm. He and his wife Ruth have two daughters.

JULIN, AXEL C. (Republican) Representative from the 41st District of King County, is serving his first term. Born in 1918 in Wallace, Idaho. Graduate, Gonzaga University and University of Washington Law School, is a lawyer. Past-president, Bellevue School Board, City of Bellevue Board of Adjustments. Past-member, Board of Trustees of Seattle-King County Bar Association. Member, Greater Bellevue Chamber of Commerce, Municipal League of Seattle and King County, PTA, Forward Thrust. He and his wife Katherine have three daughters.



KALICH, HUGH (Democrat) Representative from the 20th District comprising Lewis and Grays Harbor (part) Counties, is serving his third term. Born in 1921 in Windom, Washington. Graduate of high school, is a logger and real estate salesman. Served with the Army in World War II. Member, Eagles, Elks, Moose, VFW, American Legion, and Lions. He and his wife Mildred have two sons.

KING, RICHARD (DICK) (Democrat) Representative from the 38th District of Snohomish County, is serving his 3rd term. Born in 1934 in Ritzville. Graduate, University of Washington with B.A. and M.A. degrees, is a college teacher and debate coach. Member, Acacia Fraternity, Delta Sigma Rho and Phi Rho Pi Honoraries. He and his wife Mary Evelyn have four children.



REPRESENTATIVES

KINK, DICK J. (Democrat) Representative from the 42nd District of Whatcom County, is serving his 7th term. Born in 1921 in Bellingham. Attended, Western Washington State College, is a commercial fisherman. Served in the Navy during World War II. Member, Board of Directors of Purse Seine Association, VFW, American Legion. He is married and has a daughter.



KIRK, GLADYS (Republican) Representative from the 36th District of King County, is serving her 7th term. Born in Colorado, graduate of business college, she is a homemaker. Member, Business and Professional Women, American Legion Auxiliary, Past Presidents' Assembly, Health Facilities Planning Board, Committee on Planning Affiliates, Washington Association of Retarded Children, and King County Advisory Committee to State Department of Public Assistance. Secretary, House Republican Caucus. She and her husband Douglas have two sons.

KISKADDON, BILL (Republican) Representative from the 21st District of Snohomish County, is serving his second term. Born in 1929 in Whittier, California. Graduate, University of Washington with B.S. and M.S. in Electrical Engineering, is a Research Engineer for the Boeing Company. Member, Forest Crest Community Club, Richmond Beach Congregational Church, PTA. He and his wife Donna have three children.



KOPET, JERRY C. (Republican) Representative from the 6th District of Spokane County, is serving his 2nd term. Born in 1911 in Portland. Graduate, University of Washington with B.S. (cum laude), M.S. and Ph.D. degrees. He is a pharmacist and is owner and operator of drug stores. Served as Spokane City Councilman, member, Executive Board of Chamber of Commerce, Regional Executive Board of Boy Scouts. He and his wife Barbara have three children.

REPRESENTATIVES



KUEHNLE (KEENLY), JAMES P. (Republican) Representative from the 4th District of Spokane County, is serving his first term. Born in 1923 in Dubuque. Graduate, Oregon State University with a B.S. in Forestry, he is President of Holiday Pools, Inc. Past President, Kiwanis Club, Spokane Valley Credit Association. Member, Spokane Chamber of Commerce, Aircraft Owners and Pilots Association, Elks, Masons, and PTA. He and his wife Georgia have two daughters.

LECKENBY, WILLIAM S. (Republican) Representative from the 31st District of King County, is serving his second term. Born in 1910 in Seattle. Attended, U of W and Seminars at Harvard and Northwest Graduate School of Commerce. Served in the National Guard. Founder and Chairman of the Board, Leckenby Company; Director, American Institute of Steel Construction; 37-year member of the YMCA; Trustee, Menninger Foundation, Topeka; Member, Fautleroy Community Church, Rotary Club, Municipal League. He and his wife Josephine have four children.



LELAND, ALFRED E. (Republican) Representative from the 48th District of King County, is serving his 7th term. Born in 1921 in St. Marie, Idaho. Attended, University of Washington; Graduate, Boeing School of Aeronautics, is a real estate broker. Served in the Army Air Force. Member, Elks, Sons of Norway, Chamber of Commerce, Washington State Good Roads Association. He and his wife Bea have two children.

LITCHMAN, MARK (Democrat) Representative from the 45th District of King County, former Majority Leader, is serving his 8th term. Graduate, Roosevelt High School, College of Pacific, University of Washington with a B.A. degree in Sociology and LL.B., is a practicing attorney. President of Investment-Real Estate firm. Former Naval Intelligence Officer. Member, Elks, PTA, D.A.V., American Legion, Lake City Chamber of Commerce, Haller Lake Community Club, YMCA. He and his wife Claire have three children.



REPRESENTATIVES

LYNCH, MARJORIE (Republican) Representative from the 14th District of Yakima County, is serving her 4th term. Born in London, England, where she received her education, she is a homemaker. She served in the Women's Auxiliary Air Force (RAF) and the American Red Cross. Member, Business and Professional Women, Zonta, and League of Women Voters. She is married to E. Donald Lynch, M.D., and they have three daughters.



McCAFFREE, MARY ELLEN (Republican) Representative from District 32-A of King County, is serving her 4th term. Born in El Dorado, Kansas. Graduate, Kansas State University with a B.A. degree, is a homemaker. She and her husband Kenneth have five children.



McCORMICK, GERALDINE (Democrat) Representative from District 5-A of Spokane County, is serving her first term. Born in Spokane. Attended, Whitworth College, and is a homemaker. Member, Eagles Lodge, Triangle Grange, and VFW Auxiliary. She is a widow with two daughters.



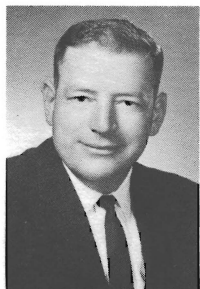
MAHAFFEY, AUDLEY F. (Republican) Representative from the 46th District of King County, is serving his 8th term. Born in Pawnee, Oklahoma. Graduate University of Washington with a Master's Degree in History and Political Science, is an Educator. Served in the United States Navy. Member, Masonic Orders, American Legion, and various educational and community groups. He and his wife Frances have three sons.

REPRESENTATIVES



MARSH, DANIEL G. (Democrat) Representative from the 49th District of Clark County, is serving his third term. Born in 1937 in Salem. Graduate, Willamette University and U of O with B.A. and LL.B. degrees, is an attorney. Served in National Guard. Former Assistant Democratic Whip; member, Sigma Alpha Epsilon, Tau Kappa Alpha, Elks, Kiwanis and Grange; Board member, Clark County Mental Retardation Board, County Mental Health Administrative Board, Tuberculosis Association, and UGN. He and his wife Diane Kay have one son.

MARTINIS, JOHN (Democrat) Representative from the 38th District of Snohomish County is serving his first term. Born in 1930 in Everett. Attended, Everett Junior College, is a retail merchant and Commissioner of the Port of Everett. He and his wife Virginia have five children.



MARZANO, FRANK G. (Democrat) Representative from the 27th District of Pierce County, is serving his third term. Born in 1922 in Tacoma. High school graduate and is a driver salesman. Served in the Army and Coast Guard. Member and three-term Commander, AM Vets Life Post No. 5; Member, Tacoma Lodge No. 1740, Bellarmine Boosters, and Christopher Columbus Society. He and his wife Angel have four children.

MAY, WILLIAM J. S. (BILL) (Democrat) Representative from the third District of Spokane County, is serving his fifth term. Graduated from high school and has taken special courses in Advertising and Electronics. He is Executive-Secretary of the Spokane Labor Council and Editor of the *Labor World*. He and his wife Pearl have three children.



REPRESENTATIVES

MENTOR, JOE (Republican) Representative from the 10th District comprising Kitsap (part) and Island Counties is serving his first term. Born in 1933, he has lived in Kitsap County since 1935. Graduate, University of Washington with a B.A. in Business Administration, is a Building Contractor. He and his wife Joan have three children. Member, Elks, Eagles, Homebuilders Association, Trustee of Silverdale Luthern Church, Bremerton, Bainbridge and Poulsbo Chambers of Commerce, Navy League and Day Care Association.



MERRILL, JOHN (Democrat) Representative from the 35th District of King County, is serving his second term. Born in 1915 in Seattle. Graduate, University of Washington with a degree in Business Administration, is owner and manager of a real estate and insurance company. Member, Elks, Eagles, Seattle Real Estate Board, St. Paul's Church Men's Club. Statistician for the University of Washington Athletic Department for 20 years. He and his wife Elizabeth have six children.

MOON, CHARLES (Democrat) Representative from the 39th District of Snohomish County, is serving his 4th term. Born in 1923 in Sheridan, Wyoming. Graduate, Washington State University with B.S. and D.V.M. degrees, is a Veterinarian. Served in the United States Army. He and his wife Ellen have three sons.



MORRISON, SID W. (Republican) Representative from the 15th District of Yakima County, is serving his second term. Born in 1933 in Yakima. Graduate, Washington State University with B.S. in Agriculture, is a Fruit-Grower. Served in the Army overseas. Former Chairman, Washington Apple Commission; Past-president, Washington Peach Council; Member, Methodist Church, Masonic Lodge, Grange, Rotary, and active in Scouting. He and his wife Marcella have four children.

REPRESENTATIVES



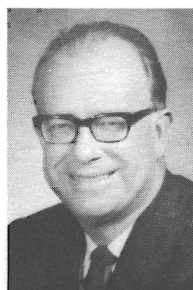
MURRAY, JOHN S. (Republican) Representative from the 36th District of King County, is serving his second term. Born in 1925 in Albany, Missouri. Attended, Stanford and graduate, University of Washington, is owner and publisher of the *Queen Anne News*. Combat Engineer in the Army. Member, Methodist Church, Commercial Club, Moose, American Legion, Community Club; active in YMCA, Seattle Children's Home, Tasks-for-Teens. He and his wife Virginia have four children.

NEWHOUSE, IRVING (Republican) Representative from District 8-A of Yakima County, is serving his third term. Born in 1920 in Mabton. Graduate, Washington State University with B.S. in Agriculture, operates an Irrigated Diversified Ranch. Director, Sunnyside Valley Irrigation District; Member, Farm Bureau, Chamber of Commerce, Cattlemen's Association, Washington Reclamation Association. He and his wife Ruth have six children.



NORTH, LOIS (Republican) Representative from the 44th District of King County, is serving her first term. Born in Berkeley, California. Graduate, University of California at Berkeley with B. A., General Secondary Teaching Credentials, and Graduate work at Columbia University, she is a housewife and a former teacher. President, Seattle League of Women Voters (1963-1967); King County Freeholder; Member, King County Boundary Review Board. She and her husband Douglass have three sons.

O'BRIEN, JOHN L. (Democrat) Representative from the 33rd District of King County, is serving his fourteenth term. Speaker of the House from 1955 through 1961, Majority Leader in 1965, and Minority Leader in 1967. Graduate of business college, attended Western Institute of Professional Accounting, and is a CPA. President, National Conference of State Legislative Leaders. Member, Eagles, Knights of Columbus, Washington Athletic Club, and Rainier Business Men's Club. He and his wife Mary have six children.



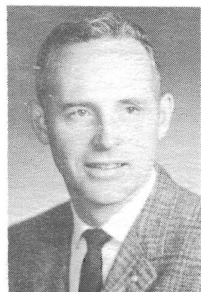
REPRESENTATIVES

O'DELL, ROBERT W. (Republican) Representative from the 17th District comprising Klickitat, Skamania, and part of Clark Counties, is serving his third term. Born in 1924 in Camas. Graduate, Whitman College with B. A. and Willamette College of Law with LL.B., is an attorney. Member, Phi Delta Theta, Lions Club. He and his wife Jeanne have three children.



PARDINI, A. J. (Republican) Representative from the 6th District of Spokane County, is serving his first term. Born in Philadelphia. Attended, Kinman Business College, is a Mortgage Loan Officer. Chairman, Mayor's Charter Revision Committee; Past President, Spokane Jaycees, Seth Woodward PTA; Member, National Budget Committee of United Funds of America, Board of Directors of Girl Scouts. He and his wife Donna have three children.

PERRY, ROBERT A. (Democrat) Representative from the 45th District of King County is serving his sixth term. Born in 1921 in New York. He is a graduate of USMS School of Engineering. Served as an officer in the Merchant Marines during World War II and Korean Conflict.



RANDALL, DR. ROBERT W. (Democrat) Representative from the 23rd District of Kitsap County, is serving his first term. Born in 1921 in Chicago. Attended, University of Washington and Illinois College of Optometry, and is an Optometrist. Vice-Chairman, Bremerton School Board; President, Community Concert Association; Member, Chamber of Commerce, Kiwanis. He and his wife Lorna Lee have three children.

REPRESENTATIVES



RICHARDSON, GORDON W. (Republican) Representative from the 4th District of Spokane County, is serving his second term. Born in 1913 in North Dakota. Attended, University of Washington and graduate, Western Washington State College, he is a realtor. Served in Army Intelligence in World War II. Member, Kiwanis, Chamber of Commerce, Board of Realtors, and former member, West Valley School Board. He and his wife Shirley have three children.

ROSELLINI, JOHN M. (Democrat) Representative from the 34th District of King County, is serving his second term. Born in 1939 in Seattle. Attended, Washington State University and Gonzaga Law School, is in motor freight business. Member, West Seattle Jaycees and West Seattle Eagles. He and his wife Marjorie have one daughter.



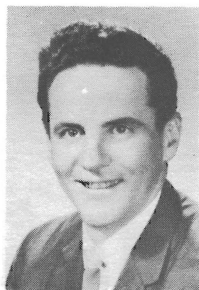
SALING, GERALD L. (Republican) Representative from District 5-B of Spokane County, is serving his 3rd term. Born in 1928 in Spokane. Served in Navy during World War II. Member, Masonic Orders, Rotary, Phi Delta Kappa; served in Sierra Leone West Africa, for U.S.A.I.D. He and his wife Dee have two children.

SAVAGE, CHARLES R. (Democrat) Representative from the 24th District comprising Clallam, Jefferson, and Mason Counties, is serving his 10th term. Served one term in the United States Congress. Born in 1906 in La Farge, Wisconsin, is in the logging business. He and his wife Helen have two children.



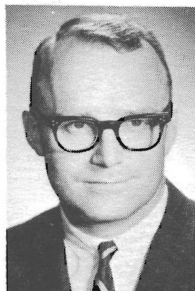
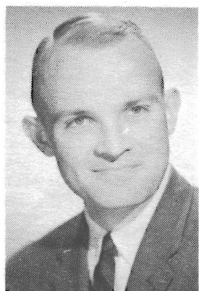
REPRESENTATIVES

SAWYER, LEONARD A. (Democrat) Representative from the 25th District of Pierce County, is serving his 8th term. Born in 1925 in Puyallup. Graduate, University of Puget Sound and University of Washington Law School, he is an attorney. Served in the Navy during World War II. Member, Elks, American Legion, and VFW.



SCHUMAKER, WILLIAM (Republican) Representative from District 2-B comprising Pend Oreille, Stevens and Ferry Counties, is serving his first term. Born in 1915 in Colville. A former newspaper publisher, he now operates a sporting goods store, and is a writer for outdoor magazines. Member, Chamber of Commerce, American Legion. He and his wife Loretta have two daughters.

SCOTT, GEORGE W. (Republican) Representative from the 46th District of King County, is serving his first term. Born in 1937 in Seattle. Graduate, Whitworth College with B.A. in Philosophy, University of Washington with M.A. in History, and is currently a doctoral candidate. Member, Masons, Municipal League, American Legion. He is married and his wife's name is Carol.



SHERA, NED (Republican) Representative from the 28th District of Pierce County, is serving his first term. Born in 1931 in Seattle. Graduate, Yale University with B.S. in Business and Finance, is owner of an insurance brokerage firm. Past President, Tacoma-Pierce County Life Underwriters Association; UGN Campaign Chairman; Board Member, Lakewood Unlimited, Tacoma Rotary, Tacoma Philharmonic. He and his wife Joanne have three children.

REPRESENTATIVES



SMYTHE, RICHARD L. (Republican) Representative from the 49th District of Clark County, is serving his second term. Born in 1926 in Tacoma. Attended, Tacoma Public Schools and Nebraska Wesleyan University, is Manager of Pacific Northwest Bell. Served in the Navy in World War II. Member, Kiwanis, and served on local school board for five years. He and his wife Marvel have three children.

SPANTON, KEITH J. (SPIKE) (Republican) Representative from the 15th District of Yakima County, is serving his second term. Born in 1924 in Yakima. High school graduate and former magistrate. Served three years in Air Force during World War II. Chairman, UGN, County Heart Association; Boy Scout Counselor and Juvenile Delinquency lecturer. He and his wife Elnore have four children.



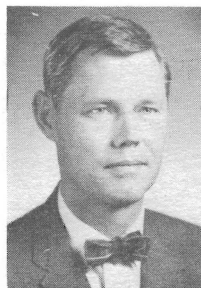
SPRAGUE, DAVID G. (Democrat) Representative from the 37th District of King County is serving his second term. Born in 1920 in North Cohocton, New York. Has B.A. from Wesleyan University (Phi Beta Kappa), M.A., Fletcher School, Navy Pilot during World War II. Member, Commission on Civil Disorder; Chairman of the Board, Western Washington State College; teacher and vestryman of Epiphany Parish; President, Sprague-Israel, Inc., Insurance Brokers. He and his wife Bette have six children.

SWAYZE, THOMAS A., JR. (Republican) Representative from the 26th District of Pierce County is serving his third term. Born in 1930 in Tacoma. Graduate, University of Puget Sound and University of Washington Law School, is an attorney. Served in the Army. Active in Civic, Church, and Charitable Organizations. He and his wife Marliss have three children.



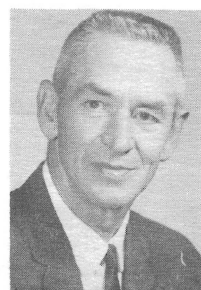
REPRESENTATIVES

THOMPSON, ALAN (Democrat) Representative from the 18th District comprising Cowlitz and Wahkiakum Counties, is serving his third term. Born in 1927 in Geneva, Iowa. Attended, University of Nebraska and University of California and has a B. A. degree. He is the Publisher of two weekly newspapers: the *Cowlitz County Advocate* and the *Lewis County News*. Served in the Navy. He and his wife Barbara have four sons.



VEROSKE, FRED A. (Republican) Representative from the 42nd District of Whatcom County, is serving his third term. Born in 1928 in Chelan. Graduate, California College of Mortuary Science, is a Funeral Director. Member, Methodist Church, Kiwanis, Elks, Masons, Grange, Cattlemen's Association, State and National Funeral Director's Association. He and his wife Joyce have three children.

WANAMAKER, F. (PAT) (Republican) Representative from the 10th District of Kitsap (part) and Island Counties, is serving his second term. Born in 1910 in Port Townsend. Attended, University of Washington, he is a retired farmer and real estate developer. Member, Methodist Church, Chamber of Commerce, Elks, Lions, Masons; Chairman, Ferry Advisory Commission; Served 9 years on County and Local School Board. He and his wife Irene have four children.



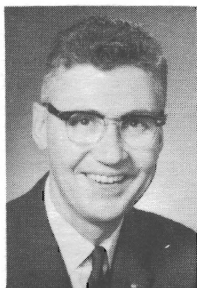
WHETZEL, JONATHAN (Republican) Representative from the 43rd District of King County, is serving his third term. Born in 1927 in Pittsburgh. Graduate of Princeton University with B.A. (cum laude) and Harvard Law School with LL.B., is a lawyer and general manager of real estate and investment firm. Served in the Navy during World War II. He and his wife Judith have one child.

REPRESENTATIVES



WOJAHN, LORRAINE (Democrat) Representative from the 27th District of Pierce County, is serving her first term. Born in 1920 in Tacoma. Attended, University of Washington, she works in public relations. Member: Governor's Commission on the Status of Women; Consumer Counseling Service of Seattle, Inc.; National Advisory Committee, Consumer Federation of America; Washington Committee on Consumer Interests; Tacoma-Pierce County YWCA. She and her husband Gilbert have two sons.

WOLF, HAROLD E. (HAL) (Republican) Representative from the 22nd District of Thurston County, is serving his third term. Graduate, University of Puget Sound with a B. A. degree, he owns and operates a supermarket. Served in the Navy during World War II. Active in many civic affairs and is a member of Lions, Elks, Moose, and Masonic Lodge. He and his wife Peggy have three children.



ZIMMERMAN, HAROLD S. (HAL) (Republican) Representative from the 17th District comprising Klickitat, Skamania, and part of Clark Counties, is serving his second term. Born in 1923 in Valley City, North Dakota. Graduate, University of Washington with a B.A. degree, is Editor-Publisher of the *Camas Post Record*. Served in the Air Force in World War II. Past-President, Washington Newspaper Publishers Association; Member, Sigma Chi, Methodist Church, Kiwanis, and Grange. He and his wife Judy have three children.



McBEATH, MALCOLM (DUTCH) (Republican) Chief Clerk of the House of Representatives serving his 2nd Session. Served as a member from the 42nd district in the 1953 and 1955 sessions. Born in 1913 in Bellingham. Attended Western Washington State College and University of Washington, is the owner of McBeath Glass and Paint Company in Bellingham and President of McBeath Glass Company in Mount Vernon. Former City Councilman, former member of the Planning Commission and Past President of the Chamber of Commerce. He and his wife Eleanor have four children.

SNYDER, SIDNEY R. (Democrat) Assistant Chief Clerk of the House from the 19th District. Served as Assistant Chief Clerk from 1957 until November, 1965, when he became Acting Chief Clerk serving until December, 1966. Born in 1926 in Kelso. Attended, Lower Columbia College, owns and operates a Supermarket. Past President and Director of Washington State Food Dealers' Association; Member, Elks, Lions. He and his wife Bette have three children.



PRINCE, EUGENE A. (Republican) Sergeant-at-Arms of the House of Representatives from District 9-B in Whitman County. Worked as an employee with the house staff in 1959-63-65 and will be serving his second term as Sergeant-at-Arms. Born in 1930 in Thornton. Graduate, WSU in agriculture and engineering and is a farmer. Served in the Air Force as a transportation officer. Past State President, Washington Association of Wheatgrowers. Member, Masons, Grange, Farm Bureau. He and his wife Sherri have two children.