



THE SENATE
of the
STATE OF WASHINGTON
FORTY-FOURTH LEGISLATURE
1975-1977

Prepared by Sid Snyder, Secretary of the Senate

WELCOME TO THE WASHINGTON STATE SENATE

CONSTITUTION OF THE STATE OF WASHINGTON

The Constitution of the State of Washington was framed by a convention of seventy-five delegates, chosen by the people of the Territory of Washington at an election held May 14, 1889. The convention met at Olympia on the fourth day of July, 1889, and adjourned on the twenty-second day of August, 1889. The Constitution was ratified by the people at an election held on October 1, 1889, and on November 11, 1889 the President of the United States proclaimed the admission of the State of Washington to the Union.

The Constitution of the State of Washington follows the classic structure of the United States Constitution, providing for three separate but equal branches of government. Legislative, Judicial and Executive.

These are the men and women you have chosen to struggle with the problems which concern you. You have hired them. They are working for you.

The four women and forty-five men who are your Senators are a cross-section of the citizens of this state—farmers, business men and women, teachers, homemakers, attorneys, retirees. They want to know your needs, and need to have their efforts reinforced by your interest.

ON THE ROSTRUM

Lieutenant Governor John A. Cherberg wields the gavel as President of the Senate. At the desks below him are the men and women who perform the highly technical functions necessary for the processing of legislation on the floor of the Senate.

To the left of the Rostrum is the Press Desk. The notes you see being taken may be the basis for the article you will read in tonight's paper.

IN THE BACKGROUND

The door behind the President's chair leads to the Work Room. Here your Senate Introductions and Calendars are prepared and here bills are processed for introduction. When a bill is before the body for second reading and is amended, the amendments are typed into a terminal in the Work Room, and within minutes the bill, as amended, now called an engrossed bill, comes out of a high speed printer at the Legislative Information Services Center on the first floor of the Legislative Building.

Senators' offices and committee rooms are on the third and fourth floors of the Legislative Building, on the fourth floor of the Public Lands Building, and the first floor of the Institutions Building. There is a direct line from each Senator's desk on the floor to his office.

The blue-jacketed Senate Pages are boys and girls from every corner of the state who serve as the legs of the Senate for two-week periods. A Page School enables them to keep up with their school work as they have the opportunity to learn about government by being a part of it.

THE GALLERY

Here is the most important part of the Legislature. Here sit the people of the State of Washington who have elected the Senators to represent them.

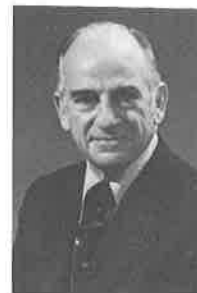
THIS IS YOUR SENATE WE ARE PLEASED THAT YOU ARE HERE.

THE PRESIDING OFFICER

Lt. Gov. John A. Cherberg has gained an unequalled reputation for fairness to both sides of the political aisle in his duties, as outlined in the state Constitution, as presiding officer of the Senate.

Elected in 1956, he has served as the President of the Senate in each regular and special session of the Legislature since 1957.

In addition, he serves as chairman of the Senate Committee on Rules. By acts of the Legislature he has been assigned duties on boards and commissions, making the position of Lieutenant Governor one of the most important elective offices in state government.



Lt. Gov. John A. Cherberg

THE PRESIDENT PRO TEM

Now serving in his twenty-fifth year in the Legislature, Senator Al Henry was first elected to the House of Representatives in 1941. He has the distinction of being the first member of the Senate to be elected as President Pro Tem for five consecutive terms, and has held the position for six terms in all.

During his service in the Senate since 1957, Senator Henry has been chairman of most of the major committees. He is vice chairman of the Transportation and Utilities Committee and a member of Rules and State Government committees.



Senator Al Henry

THE VICE PRESIDENT PRO TEM

Senator James Edward Keefe was elected Vice President Pro Tem at the opening session of the 41st, 42nd, 43rd and 44th Legislatures. He is the first ranking member of the Senate in seniority, having been elected from Spokane's Third District, in 1948, and reelected each term since then.

Senator Keefe also serves as a member of the Senate Committees on Rules, Financial Institutions and Transportation and Utilities.



Senator James Edward Keefe

The Leadership

Majority Party

Senator Robert C. Bailey of South Bend has served as Majority Caucus Chairman since the 1961 session of the Legislature. He was elected to the Senate in 1956, and reelected in 1960, 1964, 1968, and 1972, and ranks fourth in seniority in the Senate. Previously, he served as a member of the House of Representatives from 1951 through 1956. Senator Bailey represents the Grays Harbor-Pacific County area in the Legislature.



Senator Robert C. Bailey

Senator August P. Mardesich of Everett is serving his second term as Majority Floor Leader. An attorney and commercial fisherman, he first served in the House of Representatives in 1950 and for one term was majority floor leader of that body. He was elected to the Senate in 1962 and reelected in 1966, 1970, and 1974. Born in San Pedro, California, Senator Mardesich attended Everett schools. He received his law degree from the University of Washington.



Senator August P. Mardesich

Senator George Fleming of Seattle is serving his second term as Majority Caucus Vice Chairman. He served one session as a member of the House of Representatives and was elected to the Senate in 1970. In private life, he is a telephone company personnel supervisor. Senator Fleming, a graduate of the University of Washington and a member of the 1960 and 1961 Rose Bowl football teams, also is a former professional football player.



Senator George Fleming

Senator Reuben A. Knoblauch of Pierce County is serving his sixth term as Majority Caucus Secretary. First elected to the House of Representatives in 1947, and to the Senate in 1953, he has been a member of the Washington State Legislature continuously for twenty-seven years. A retired farmer, Senator Knoblauch was born and still resides in Sumner.



Senator Reuben A. Knoblauch

The Leadership—1976

Majority Party

Senator Robert C. Bailey of South Bend has served as Majority Caucus Chairman since the 1961 session of the Legislature. He was elected to the Senate in 1956, and reelected in 1960, 1964, 1968, and 1972, and ranks fourth in seniority in the Senate. Previously, he served as a member of the House of Representatives from 1951 through 1956. Senator Bailey represents the Grays Harbor-Pacific County area in the Legislature.



Senator Robert C. Bailey

Senator Gordon L. Walgren of Bremerton serves as Majority Floor Leader. He first entered public service as Prosecuting Attorney for Kitsap County and served in the House of Representatives prior to his election to the Senate in 1968. Senator Walgren is an attorney with his practice located in Bremerton. He received his law degree from the University of Washington.



Senator Gordon L. Walgren

Senator Dan Marsh of Vancouver serves as Majority Whip. He is an attorney, practicing law in Vancouver, and is serving his second session in the Senate. He previously served four sessions in the House of Representatives from 1965 to 1973. He is a member of the Senate Democratic Campaign Committee. He is a graduate of Willamette University and University of Oregon with B.A. and J.D. degrees.



Senator Dan Marsh

Senator George Fleming of Seattle is serving his second term as Majority Caucus Vice Chairman. He served one session as a member of the House of Representatives and was elected to the Senate in 1970. In private life, he is a telephone company personnel supervisor. Senator Fleming, a graduate of the University of Washington and a member of the 1960 and 1961 Rose Bowl football teams, also is a former professional football player.



Senator George Fleming

Senator Reuben A. Knoblauch of Pierce County is serving his sixth term as Majority Caucus Secretary. First elected to the House of Representatives in 1947, and to the Senate in 1953, he has been a member of the Washington State Legislature continuously for twenty-seven years. A retired farmer, Senator Knoblauch was born and still resides in Sumner.



Senator Reuben A. Knoblauch

Minority Party

Senator Jim Matson of Selah, Yakima County, is serving his first term as Minority Caucus Chairman, having previously served as Caucus Whip and Caucus Vice Chairman/Secretary, respectively. A fruit grower, packer and shipper, he first served in the Senate in 1969, and was reelected to a four-year term in 1972. Born in Yakima, Senator Matson attended Whitman College and Yakima Valley College. He is a veteran of World War II and a member of the Elks, Kiwanis and Chamber of Commerce.



Senator Jim Matson

Senator Harry B. Lewis of Thurston County is serving his second term as Minority Floor Leader, having served as Caucus Secretary in 1969 and 1971. He was a member of the House of Representatives for two sessions prior to his election to the Senate in 1964. Senator Lewis attended the University of Puget Sound and is a graduate of the University of Washington. He is in the manufacturing business. Senator Lewis served in the Army during World War II, and is a member of the American Society of Foresters, Elks, Phi Delta Theta and the American Legion.



Senator Harry B. Lewis

Senator Charles E. Newschwander is serving his second term as Assistant Minority Floor Leader. A dentist, he served eight years in the House of Representatives prior to his election to the Senate in 1968. Senator Newschwander attended the University of Puget Sound and graduated from the University of Oregon Dental School. He served in the Navy as a dentist during World War II and the Korean conflict, and is a member of the Masons and Scottish Rite.



Senator Charles E. Newschwander

Senator George W. Clarke of King County is serving his first term as Vice Chairman/Secretary of the Minority Caucus. Elected to the House of Representatives in 1967, he was appointed to the Senate in 1971 where he has served continuously since. An attorney, Senator Clarke served as a naval officer in World War II.



Senator George W. Clarke



BAILEY
(D)—South Bend
Printer
Elected Senate, 1956



BECK
(D)—Port Orchard
Property Manager
Appointed Senate, 1974



BENITZ
(R)—Prosser
Agri-Business
Elected Senate, 1974



BLUECHEL
(R)—Kirkland
Pres., Loctwall Corp.
Elected Senate, 1974



BOTTIGER
(D)—Tacoma
Attorney
Elected Senate, 1972



BUFFINGTON
(R)—Seattle
Apparel Representative
Elected Senate, 1974



CLARKE
(R)—Mercer Island
Attorney
Appointed Senate, 1971



CUNNINGHAM
(R)—Seattle
Pres., NW Containers, Inc.
Elected Senate, 1974



DAY
(D)—Spokane
Chiropractor
Elected Senate, 1968



DONOHUE
(D)—Dayton
Farmer
Elected Senate, 1968



FLEMING
(D)—Seattle
Telephone Executive
Elected Senate, 1970



FRANCIS
(D)—Seattle
Attorney
Appointed Senate, 1969



GOLTZ
(D)—Bellingham
College Administrator
Elected Senate, 1974



GOULD
(R)—Edmonds
School Board Member
Elected Senate, 1974



GRANT
(D)—Kent
Pres., Labor Union
Elected Senate, 1972



GUESS
(R)—Spokane
Civil Engineer
Elected Senate, 1962



HENRY
(D)—White Salmon
Telephone Executive
Elected Senate, 1956



HERR
(D)—Seattle
Association Executive
Appointed Senate, 1964



JOLLY
(D)—Connell
Farmer
Appointed Senate, 1970



JONES
(R)—Kirkland
Telephone Executive
Appointed Senate, 1973



KEFFE
(D)—Spokane
Sales Manager Consultant
Elected Senate, 1948



KNOBLAUCH
(D)—Sumner
Retired Farmer
Elected Senate, 1952



LEWIS, H.
(R)—Olympia
Manufacturer
Elected Senate, 1964



LEWIS, R.
(R)—Spokane
Savings and Loan Official
Elected Senate, 1972



MARDESICH
(D)—Everett
Attorney and Commercial Fisherman
Elected Senate, 1962



MARSH
(D)—Vancouver
Attorney
Elected Senate, 1972



MATSON
(R)—Selah
Fruit Grower
Elected Senate, 1968



McDERMOTT
(D)—Seattle
Physician
Elected Senate, 1974



MORRISON
(R)—Zillah
Farmer
Elected Senate, 1974



MURRAY
(R)—Seattle
Publisher
Elected Senate, 1970



NEWSCHWANDER
(R)—Tacoma
Dentist
Elected Senate, 1968



NORTH
(R)—Seattle
Local Govt. Planner
Elected Senate, 1974



ODEGAARD
(D)—Centralia
Teacher
Elected Senate, 1968



PETERSON
(D)—Concrete
Oil Distributor
Elected Senate, 1964



PULLEN
(R)—Kent
Research Engineer
Elected Senate, 1974



RASMUSSEN
(D)—Tacoma
Real Estate
Elected Senate, 1960



RIDDER
(D)—Seattle
Homemaker
Elected Senate, 1973



SANDISON
(D)—Port Angeles
Insurance
Elected Senate, 1958



SCOTT
(R)—Seattle
Educational Administrator
Elected Senate, 1970



SELLAR
(R)—E. Wenatchee
Dispensing Optician
Appointed Senate, 1972



STORTINI
(D)—Tacoma
Teacher-Coach
Elected Senate, 1968



TALLEY
(D)—Kelso
Safety Supervisor
Elected Senate, 1956



VAN HOLLEBEKE
(D)—Seattle
Real Property Manager
Elected Senate, 1972



von REICHBAUER
(D)—Burton
Publisher-Writer
Elected Senate, 1973



WALGREN
(D)—Bremerton
Attorney
Elected Senate, 1968



WANAMAKER
(R)—Coupeville
Retired Farmer
Elected Senate, 1972



WASHINGTON
(D)—Ephrata
Attorney
Elected Senate, 1950



WILSON
(D)—Omak
Publisher
Elected Senate, 1968



WOODY
(D)—Everett
Attorney
Elected Senate, 1972

1975

SENATE

SEATING

Buffington 42 Gould 43 Cunningham 44 Pullen 45
 Morrison 35 Bluechel 36 North 37 Benitz 38
 Lewis(Bob) 29 Jones von Reichbauer 30 31
 Wanamaker 23 Sellar 24 Rasmussen 25
 Murray 17 Matson 18 Francis 19
 Scott 11 Lewis (H.) 12 Day 13
 Clarke 5 Newschwander 6 Peterson 7
 Guess 1 Henry 2

Beck 46 Wilson 47 Goltz 48 McDermott 49
 Ridder 39 Woody 40 Van Hollebeke 41
 Stortini 32 Bottiger 33 Grant 34
 Marsh 26 Fleming 27 Jolly 28
 Bailey 20 Walgren 21 Odegard 22
 Mardesich 14 Sandison 15 Donohue 16
 Herr 8 Talley 9 Keefe 10
 Washington 3 Knoblauch 4

Sergeant P.A. Minute Reading Sec'y of the Ass't
 at Arms Technician Clerk Clerk Senate Sec'y

Charlie Johnson

Dorothy Verne Greeley Sawyer

Sid Snyder

Bill Gleason

PRESS

DESK

President of the SENATE

LT. GOVERNOR JOHN A. CHERBERG

Docket Clerk

Elmo Fadling

SENATE

SEATING

Buffington Gould Cunningham Pullen
42 43 44 45

Morrison Bluechel North Benitz
35 36 37 38

Lewis(Bob) Jones von Reichbauer
29 30 31

Wanamaker Sellar Rasmussen
23 24 25

Murray Matson Francis
17 18 19

Scott Lewis (H.) Day
11 12 13

Clarke Newschwander Peterson
5 6 7

Guess Henry
1 2

Beck Wilson
46 47

Goltz McDermott
48 49

Ridder
39

Woody
40

Van Hollebeke
41

Stortini
32

Bottiger
33

Grant
34

Mardesich
26

Fleming
27

Jolly
28

Bailey
20

Marsh
21

Odegard
22

Walgren
14

Sandison
15

Donohue
16

Herr
8

Talley
9

Keefe
10

Washington Knoblauch
3 4

Sergeant P.A. Minute Reading Sec'y of the Ass't
at Arms Technician Clerk Clerk Senate Sec'y

Charlie
Johnson

Dorothy Verne
Greeley Sawyer

Sid
Snyder

Bill
Gleason

PRESS

DESK

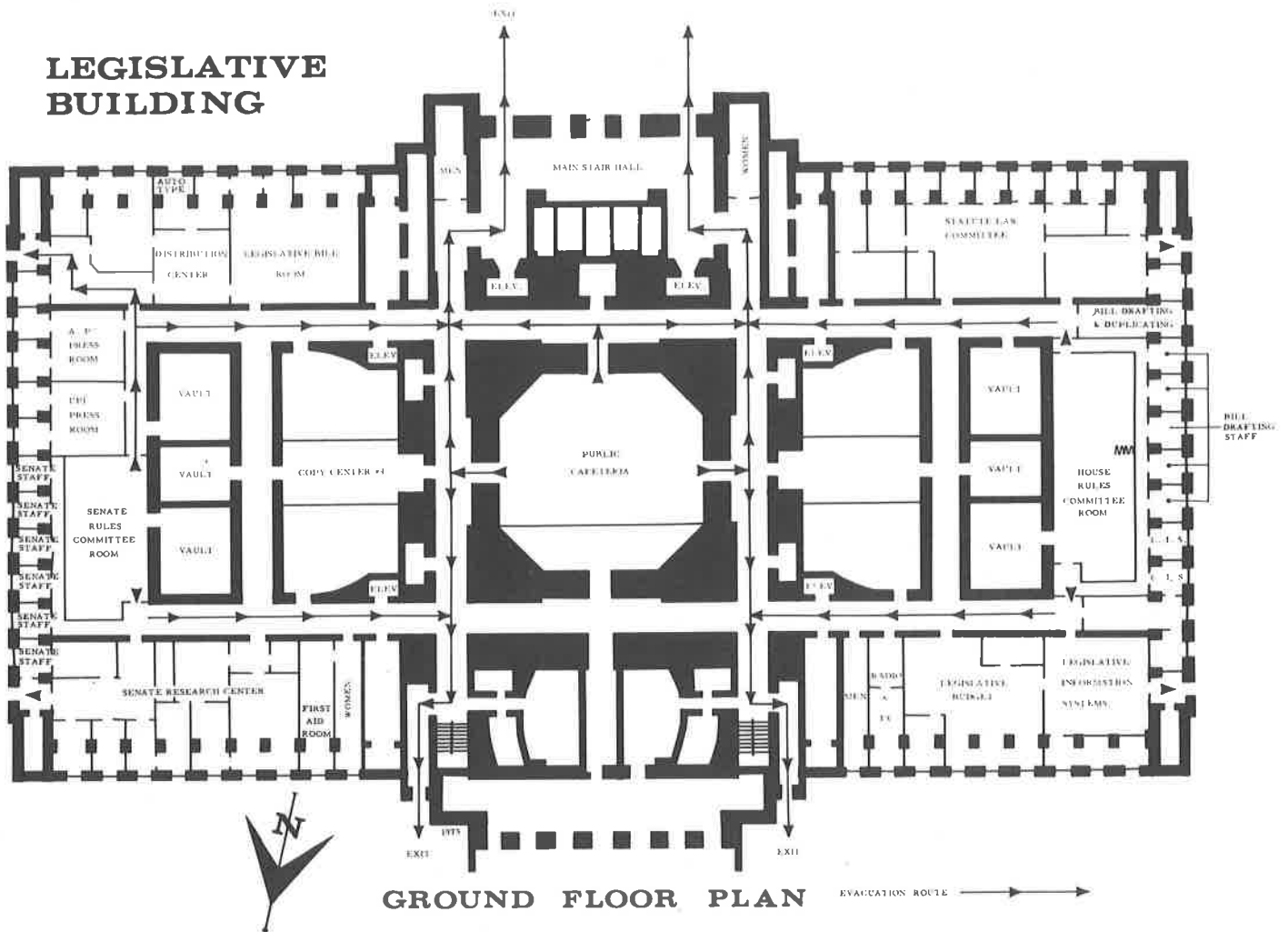
President of the
SENATE

LT. GOVERNOR
JOHN A. CHERBERG

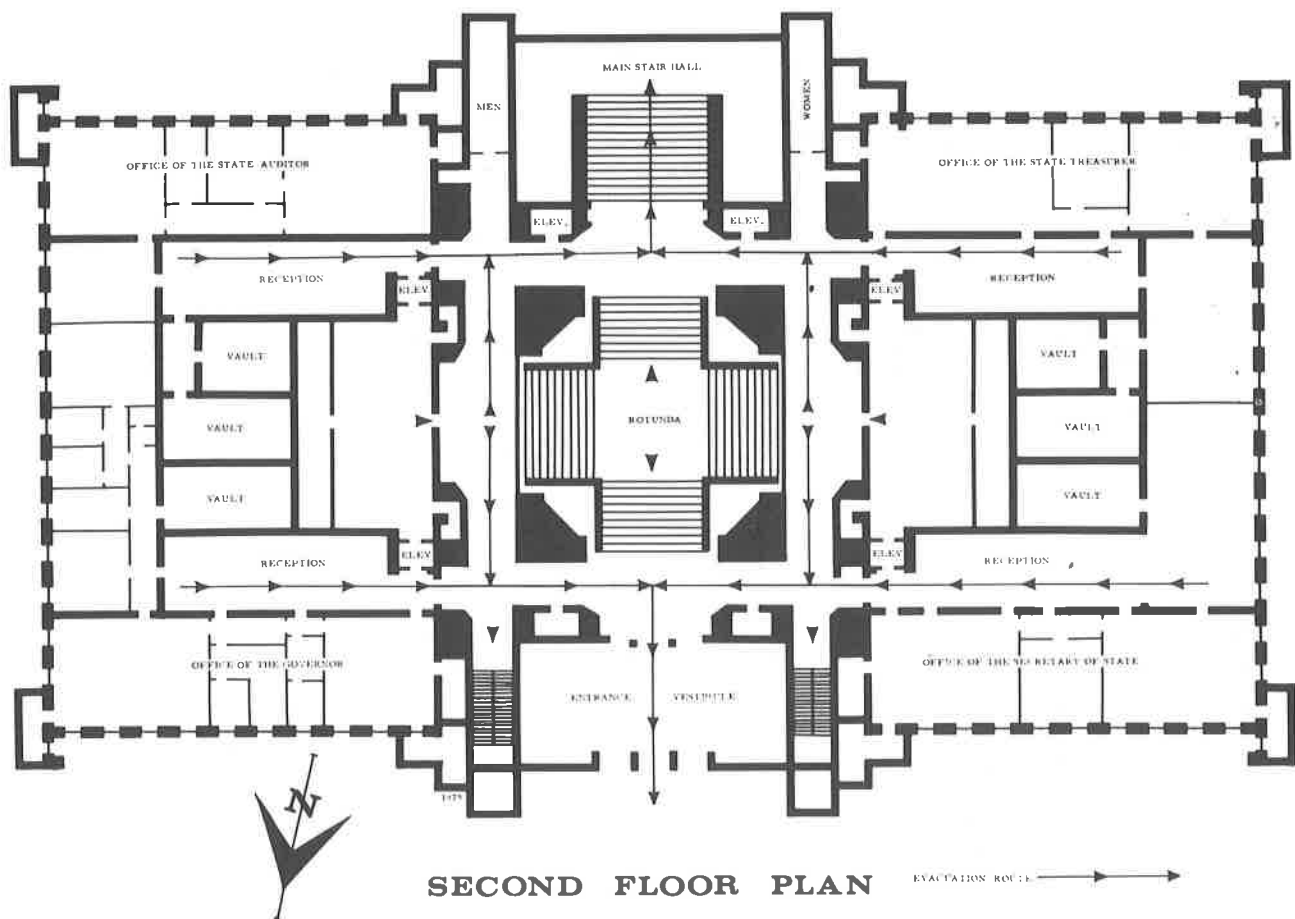
Docket
Clerk

Elmo
Fadling

LEGISLATIVE BUILDING

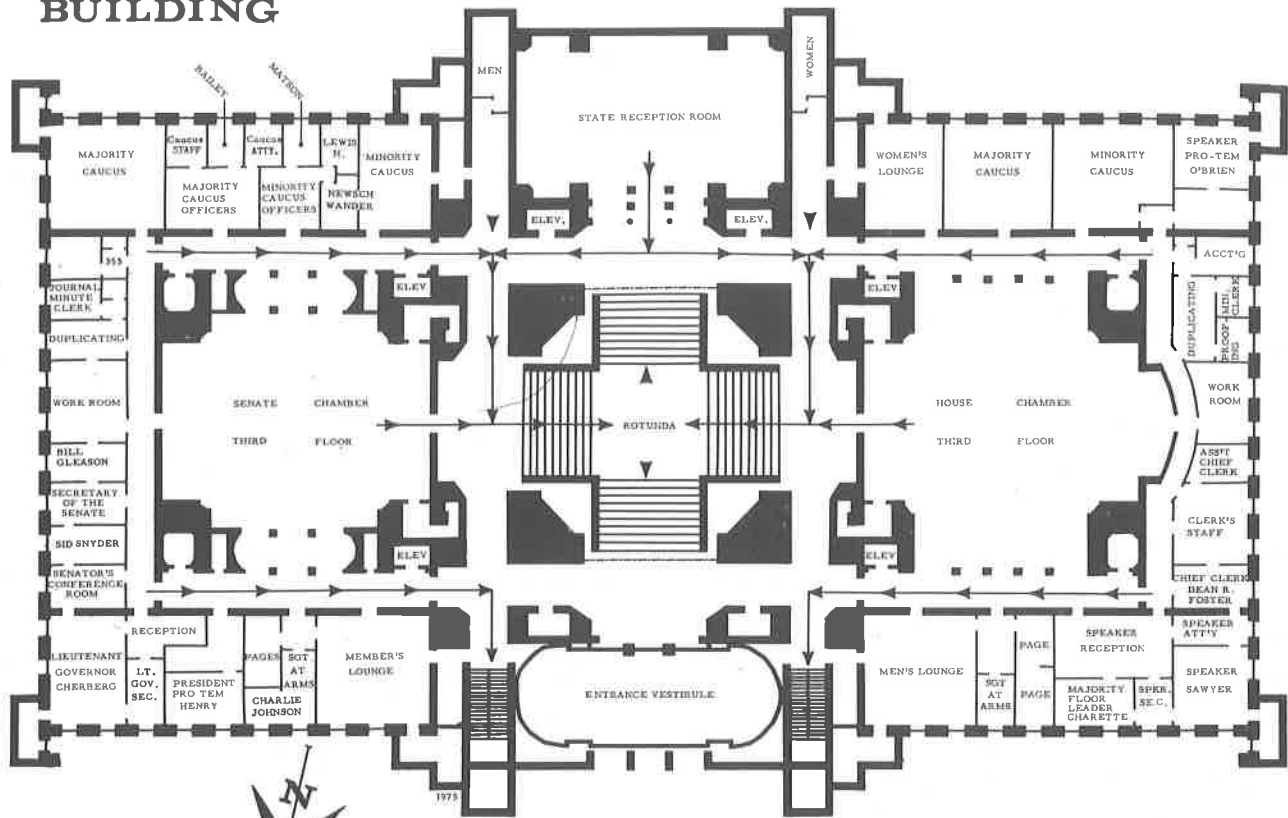


GROUND FLOOR PLAN



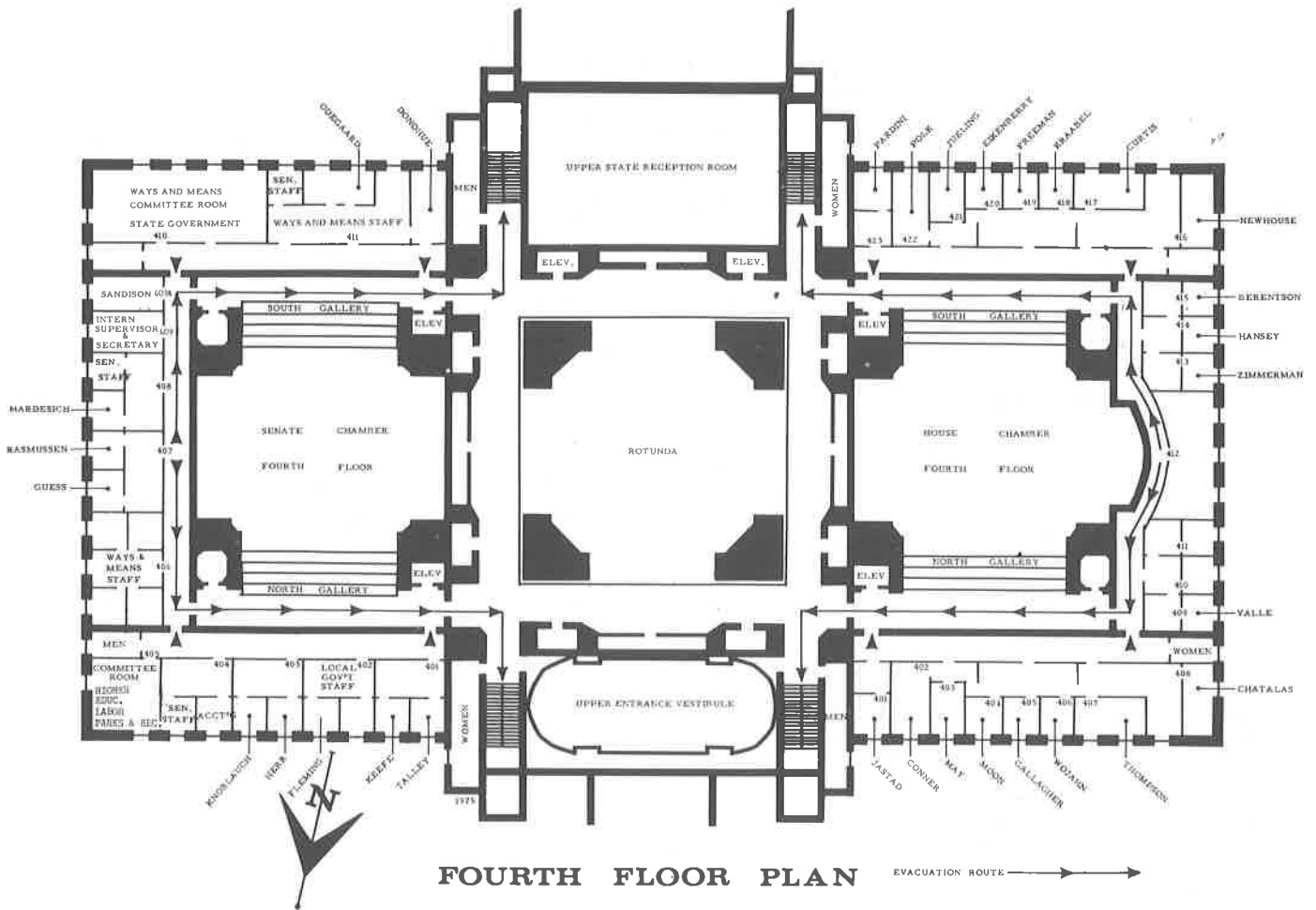
SECOND FLOOR PLAN

LEGISLATIVE BUILDING



THIRD FLOOR PLAN

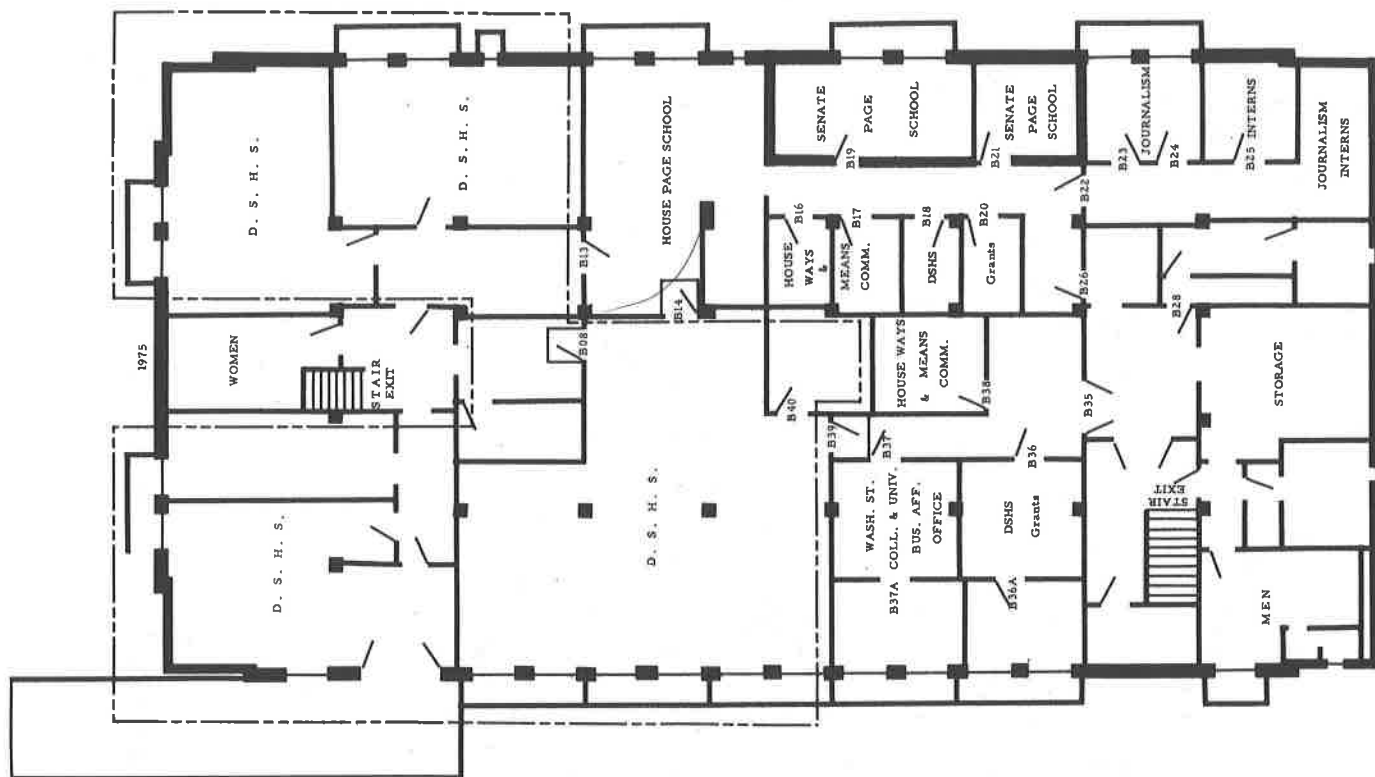
EVACUATION ROUTE →



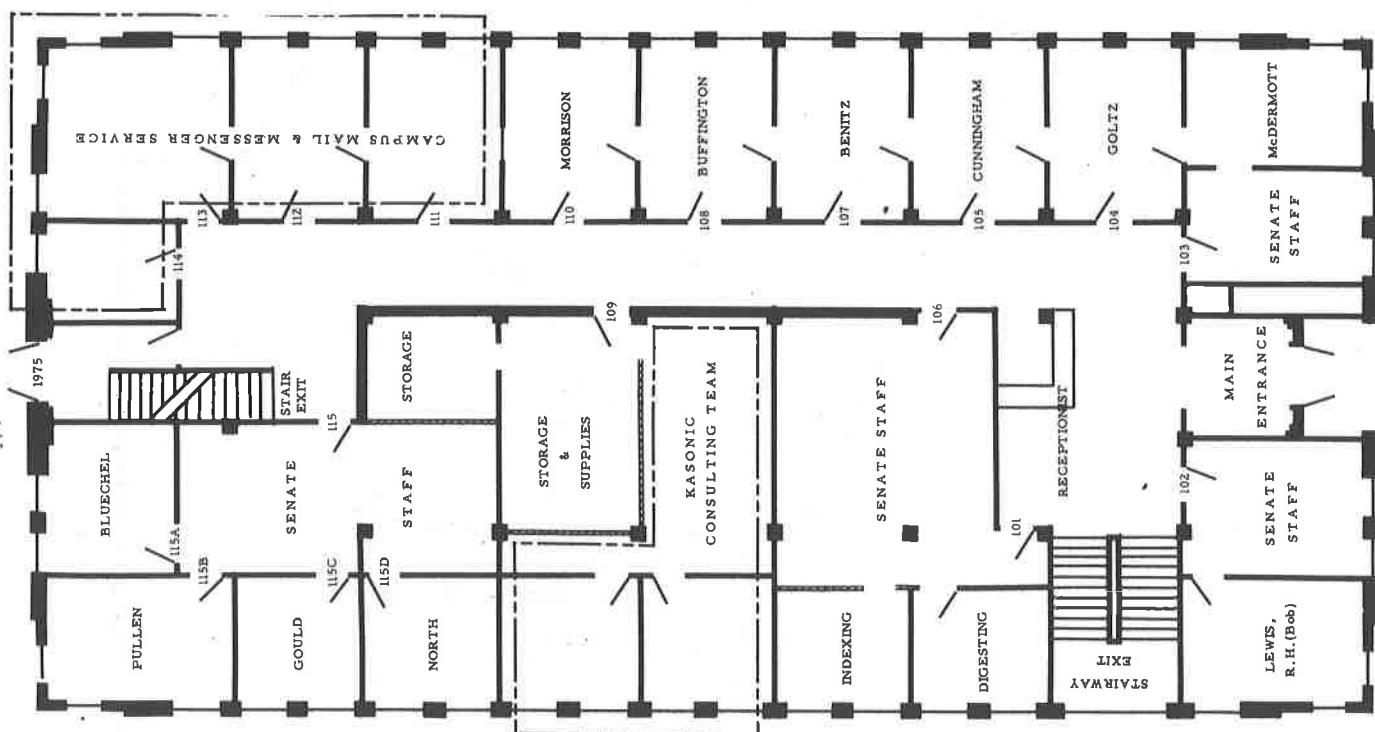
FOURTH FLOOR PLAN

EVACUATION ROUTE →

Senate Offices INSTITUTIONS BUILDING



BASEMENT



FIRST FLOOR