

# The County Road System

Joint Transportation Committee  
December 17, 2019



Washington State Association of County Engineers (WSACE)

Eric Pierson, P.E., Chelan County Engineer & WSACE President

Paul Randall-Grutter, P.E., Skagit County Engineer & WSACE Past President

Jane Wall, WSACE Managing Director

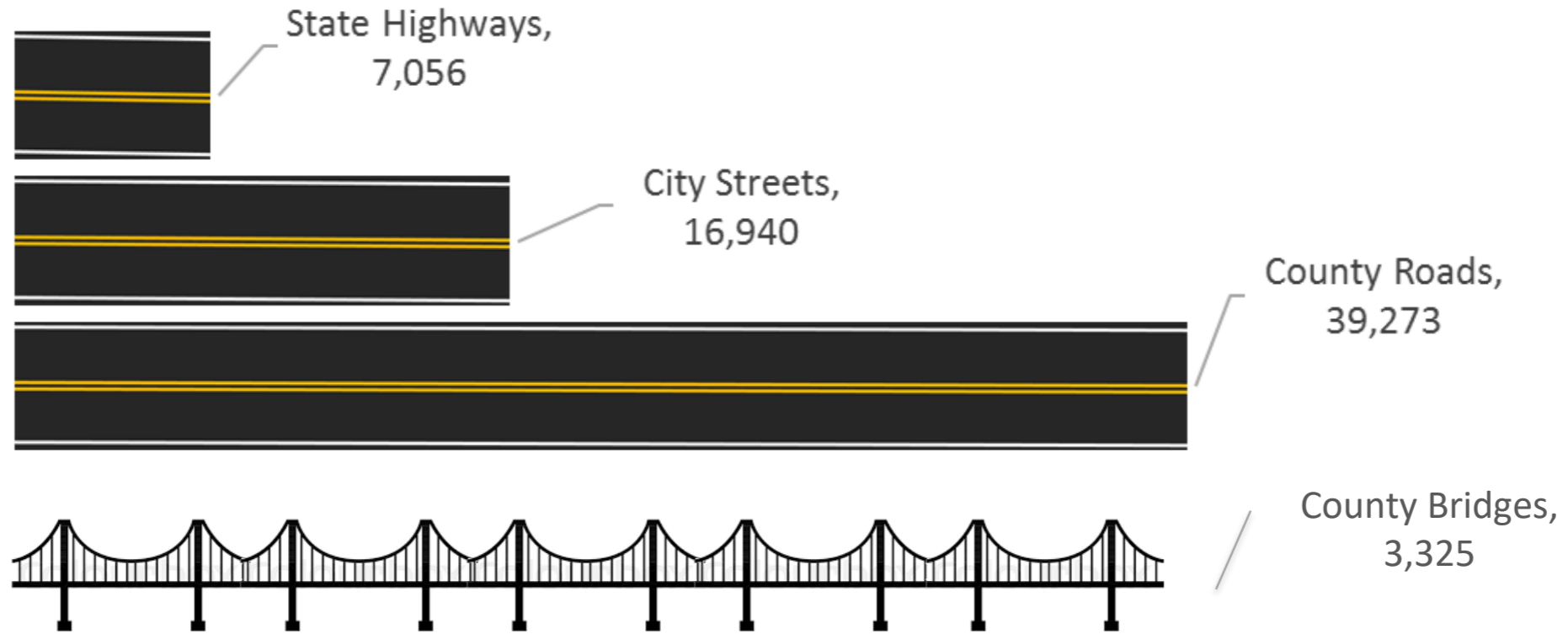


# Washington State Association of County Engineers (WSACE)

- Founded in 1906
- Board of Directors
- Full membership of Washington's 39 counties
- *The mission of the Washington State Association of County Engineers, as an affiliate member of the Washington State Association of Counties (WSAC), is to enhance leadership effectiveness by providing more opportunities for professional development, building professional relationships, and advocating stewardship of the environment and infrastructure with which we have been entrusted, for the benefit of present and future generations.*

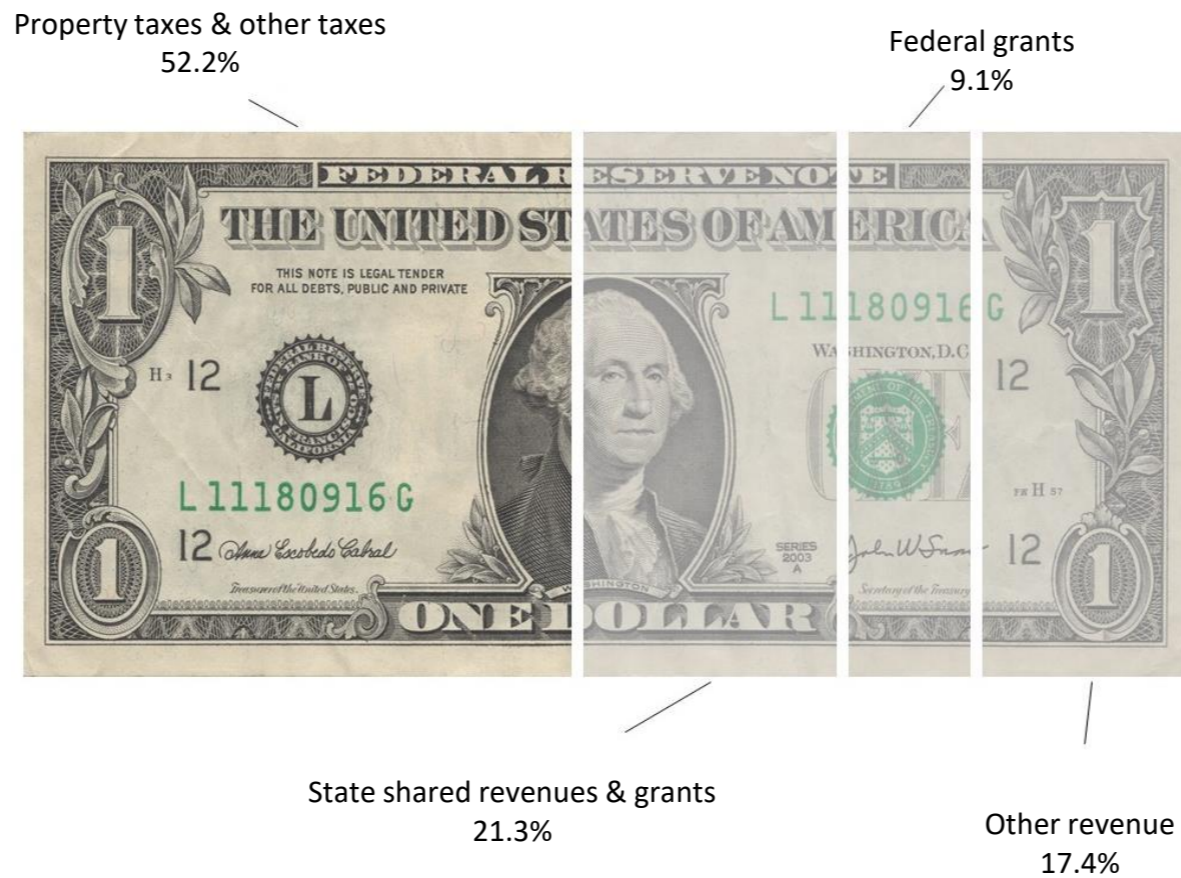
# Statewide Road System Centerline miles

County's own close to 50% of Washington's road system and 45% of bridges statewide



# How do counties pay for roads?

## County Road Fund Revenue Sources



Source: CRAB 2018 Annual Report

# How do counties pay for roads?

## County Road Property Tax

- Levy up to \$2.25 per \$1,000 A.V.
- Limited by 1% annual growth (plus new construction)
- May be increased with voter approval (lid lift)
- May exceed \$2.25 (within 1% limit) if total county levy and road levy does not exceed \$4.05
- Under certain rules and regulations counties may divert and shift road funds

Counties are now forced to move over \$60 million, or 11.5% of the 2019 road levy

Diversions pay for critical law enforcement services

# How do counties pay for roads?

## County Road Fund Revenue Sources



Source: CRAB 2018 Annual Report

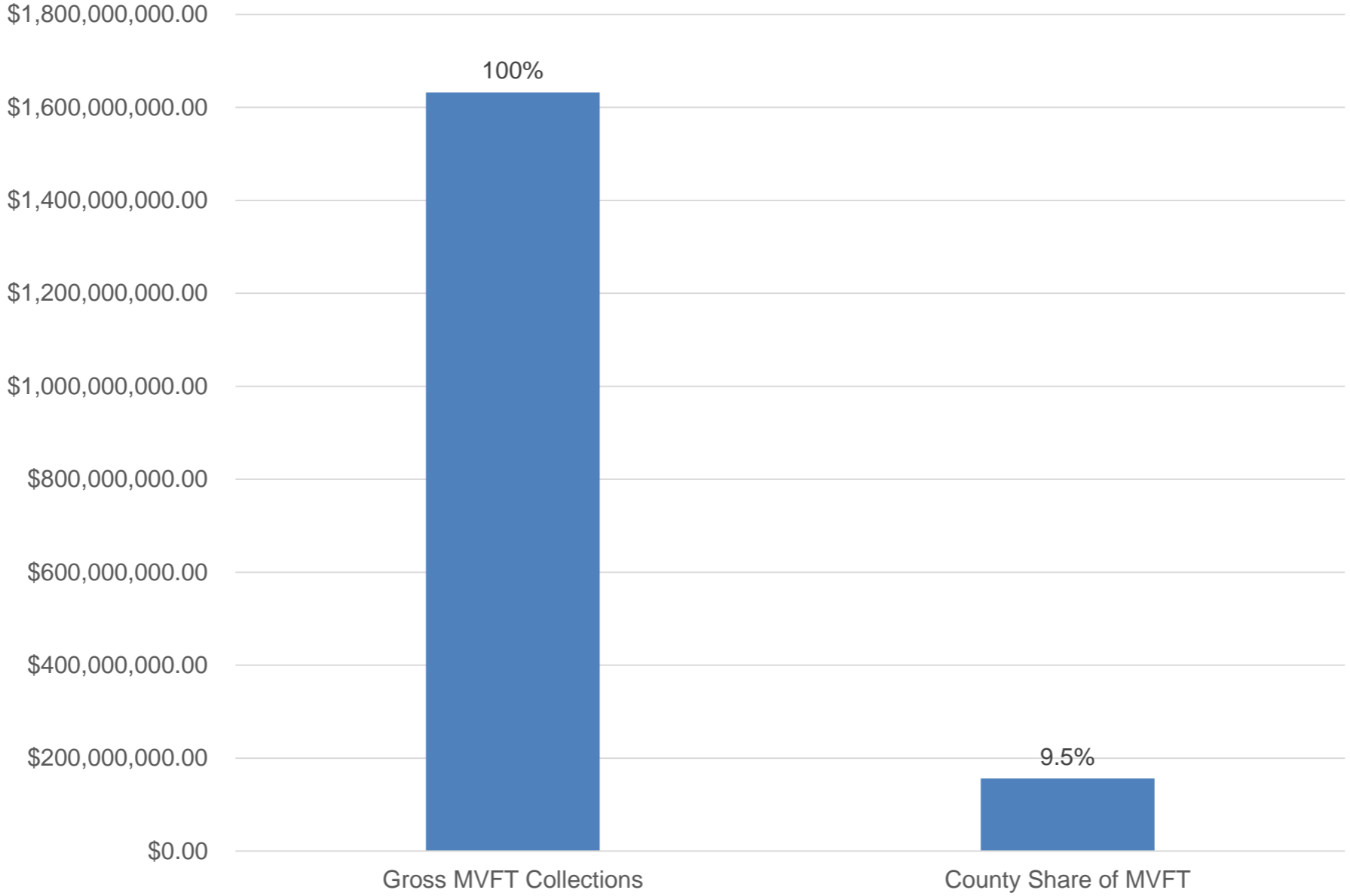
# How do counties pay for roads?

## State Shared Transportation Revenue

- Motor Vehicle Fuel Tax (MVFT) Share
  - \*4.423 cents per gallon - distributed through “10-30-30-30” formula
  - \*0.50 cents added to regular distribution with adoption of 9.5 cent Transportation Partnership Act in 2005
  - \*0.45 cents for County Arterial Preservation Program (CAPP) (~\$38 million/biennium)
  - \*0.58 cents for Rural Arterial Program (RAP) (~\$45.7 million/biennium)
  - Total is approximately 6 cents.

# How do counties pay for roads?

## Gas Tax Distributions



Source: Office of the State Treasurer, Gas Tax Report Showing Distribution. Calendar Year 2019





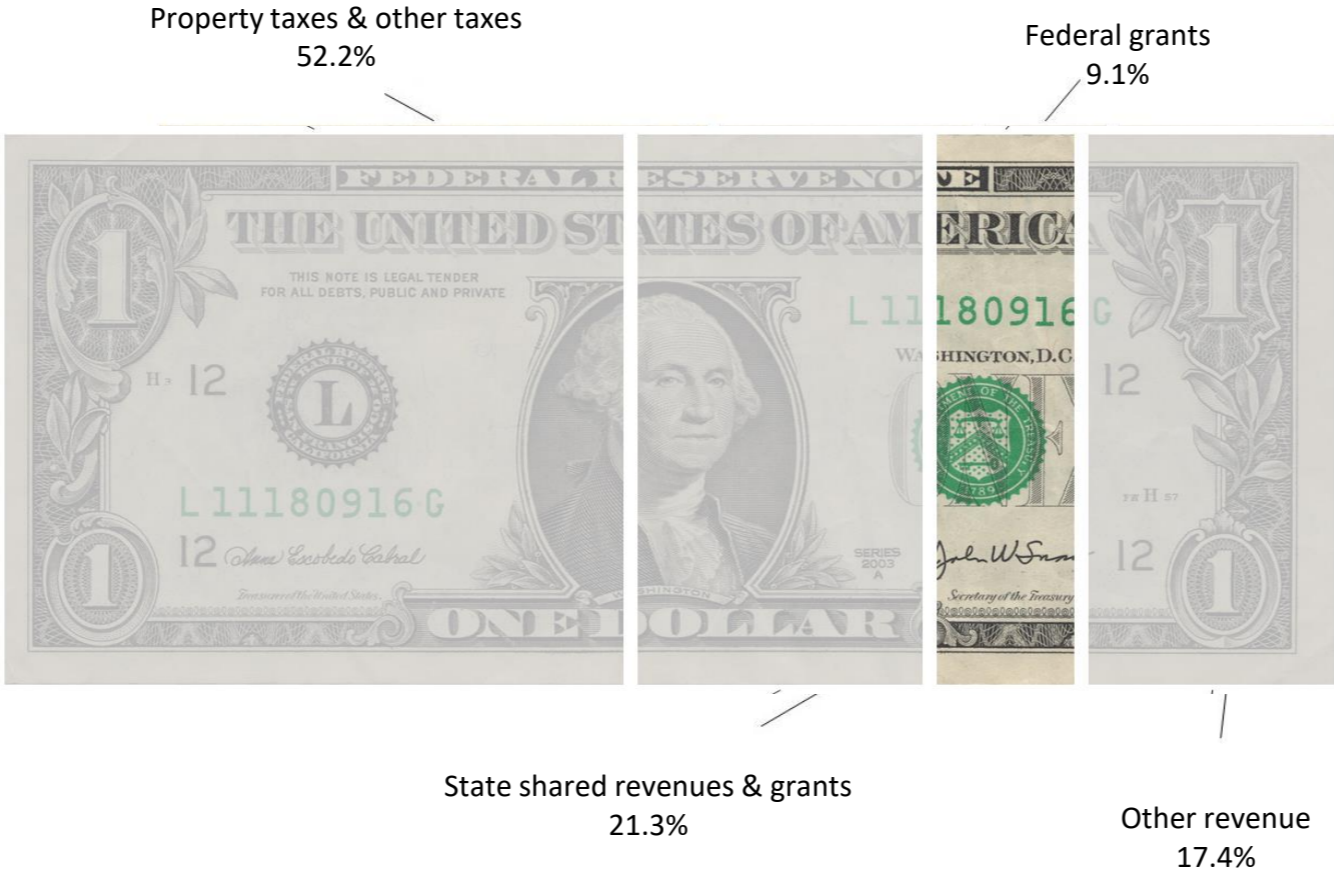
# How do counties pay for roads?

## Other state transportation revenue sources

- \$1.5 million from Motor Vehicle Fund for CAPP in 2005
- \$5 million per year additional for CAPP in 2011-13, 2015-17 transportation budget
- \$12.6 million per year additional from Connecting Washington Program – ongoing
- \$ 11.5 million per year from Transportation Improvement Board

# How do counties pay for roads?

## County Road Fund Revenue Sources



Source: CRAB 2018 Annual Report

# How do counties pay for roads?

## Federal Transportation Revenue

- Provides funding for cities, counties, transit, pedestrian, and other transportation needs;
- Funding allocated to counties primarily through regional prioritization processes:
  - Bridge Preservation Program (*does not provide funding for short-span bridges 20 feet, or less, in length [~5,000]*);
  - Congestion Mitigation Air Quality Program;
  - Surface Transportation Program (STP);
- Funding allocated to counties through grant programs:
  - Highway Safety Improvement Program
  - Rail Crossing Program
  - National Freight Program
  - Transportation Alternatives Program
  - Recreational Trails Program
  - National Highway System Preservation Program

# How do counties pay for roads?

COUNTY	MOTOR VEHICLE FUEL TAX					TAXES				MSC			TOTAL
	COUNTY REGULAR	TIB	RAP	CAPP	MVFT TOTAL	PROP- ERTY	TIMBER EXCISE	OTHER TAXES	TOTAL TAXES	FED GRANTS	FED LANDS	OTHER	
ADAMS	4,306	0	11	734	5,051	1,745	0	0	1,745	2,544	1	361	9,702
ASOTIN	1,669	3,040	276	129	5,114	1,093	5	3	1,101	1,038	6	143	7,402
BENTON	3,374	0	140	377	3,892	5,778	0	146	5,924	88	0	1,209	11,113
CHELAN	2,421	248	2,205	304	5,179	7,802	26	48	7,876	1,259	94	404	14,612
CLALLAM	2,129	0	1,035	171	3,335	7,176	351	25	7,552	1,116	55	3,305	15,363
CLARK	7,329	3,161	113	579	11,181	34,068	135	24	34,227	3,958	5	20,595	69,966
COLUMBIA	1,513	0	994	180	2,687	1,401	0	3	1,404	487	17	145	4,740
COWLITZ	2,455	0	117	281	2,853	9,536	787	104	10,427	891	0	1,209	15,380
DOUGLAS	3,687	1,143	147	381	5,358	5,885	0	43	5,928	1,001	0	1,169	13,456
FERRY	1,823	0	1,291	374	3,489	799	63	1	863	737	148	178	5,415
FRANKLIN	2,976	0	31	435	3,442	2,678	0	33	2,711	1,579	141	481	8,354
GARFIELD	1,325	0	15	199	1,539	810	0	4	814	0	1,682	103	4,138
GRANT	6,640	0	1,780	1,059	9,479	9,238	0	215	9,453	3,717	475	20	23,144
GRAYS HARBOR	2,544	0	71	330	2,945	5,808	1,015	62	6,885	3,000	21	5,583	18,434
ISLAND	2,375	0	109	273	2,758	8,727	0	4	8,731	1,100	0	6,404	18,993
JEFFERSON	1,470	0	730	166	2,366	3,631	225	12	3,868	1,475	76	1,480	9,265
KING	13,422	0	689	598	14,709	87,591	177	46	87,814	4,750	83	41,534	148,890
KITSAP	5,363	1,280	1,314	395	8,352	24,839	55	50	24,944	4,691	0	5,025	43,012
KITTITAS	2,081	0	96	1,021	3,198	4,046	1	12	4,059	1,220	0	1,188	9,665
KLICKITAT	2,785	0	639	464	3,888	4,459	342	38	4,839	3,304	66	1,953	14,050
LEWIS	3,424	0	517	364	4,306	11,662	1,254	13	12,929	4,380	161	2,835	24,591
LINCOLN	4,480	0	62	571	5,114	2,047	0	10	2,057	2,391	7	384	9,953
MASON	2,368	0	803	339	3,509	8,151	0	0	8,151	1,904	18	1,181	14,763
OKANOGAN	3,489	0	860	531	4,880	3,724	34	16	3,774	0	1,894	195	10,743
PACIFIC	1,437	0	941	423	2,802	3,175	347	14	3,536	873	0	508	7,719
PEND OREILLE	1,714	0	28	263	2,005	1,820	147	5	1,972	123	75	292	4,467
PIERCE	10,773	541	1,436	900	13,650	55,516	207	7,147	62,870	5,807	30	15,798	98,155
SAN JUAN	891	0	126	110	1,128	3,949	1	6	3,956	870	0	4,401	10,355
SKAGIT	3,535	0	0	453	3,988	13,334	439	71	13,844	6,936	37	4,290	29,095
SKAMANIA	866	0	0	1,315	2,181	1,766	235	11	2,012	464	2	192	4,851
SNOHOMSH	9,655	605	671	643	11,574	62,071	274	654	62,999	10,456	0	20,137	105,166
SPOKANE	9,219	862	978	939	11,998	22,712	69	16	22,797	3,500	9	4,001	42,305
STEVENS	3,851	0	30	595	4,475	5,346	0	0	5,346	393	15	828	11,057
THURSTON	5,382	48	22	439	5,891	19,050	253	27	19,330	2,591	0	5,125	32,937
WAHKIAKUM	890	0	38	273	1,200	123	40	0	163	235	1	730	2,329
WALLA WALLA	3,051	0	21	527	3,599	5,395	6	86	5,487	143	1	882	10,112
WHATCOM	4,279	0	0	665	4,944	18,833	165	37	19,035	669	79	2,439	27,166
WHITMAN	4,375	0	841	531	5,747	2,436	0	39	2,475	550	0	344	9,116
YAKIMA	6,771	572	204	933	8,479	12,336	4	45	12,385	5,715	117	2,814	29,510
TOTALS	152,137	11,500	19,384	19,265	202,286	480,356	6,657	9,070	496,083	85,935	5,316	159,865	949,485
% OF TOTAL	16.0%	1.2%	2.0%	2.0%	21.3%	50.6%	0.7%	1.0%	52.2%	9.1%	0.6%	16.8%	

# System Responsibilities

## Where counties spend road dollars

### Preservation & Maintenance Projects

#### Chip seal



# System Responsibilities

## Where counties spend road dollars

Preservation & Maintenance Projects  
Snow plowing



# System Responsibilities

## Where counties spend road dollars

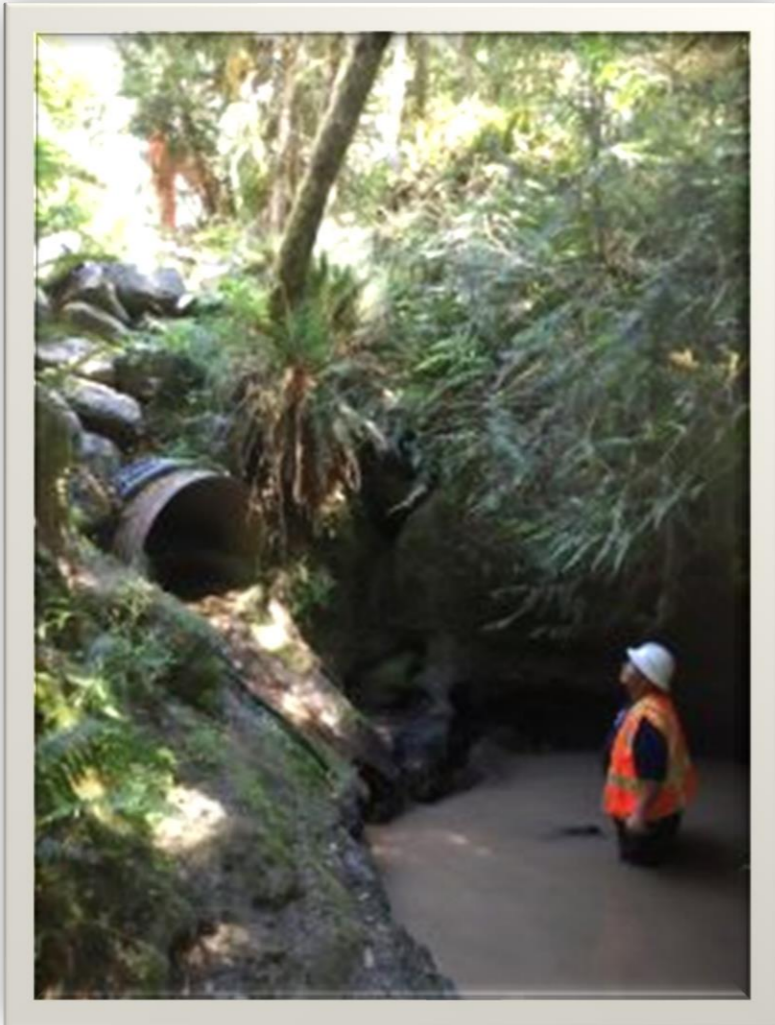
Preservation & Maintenance Projects  
Bridge Maintenance



# System Responsibilities

## Where counties spend road dollars

Fish passage & culvert replacement projects



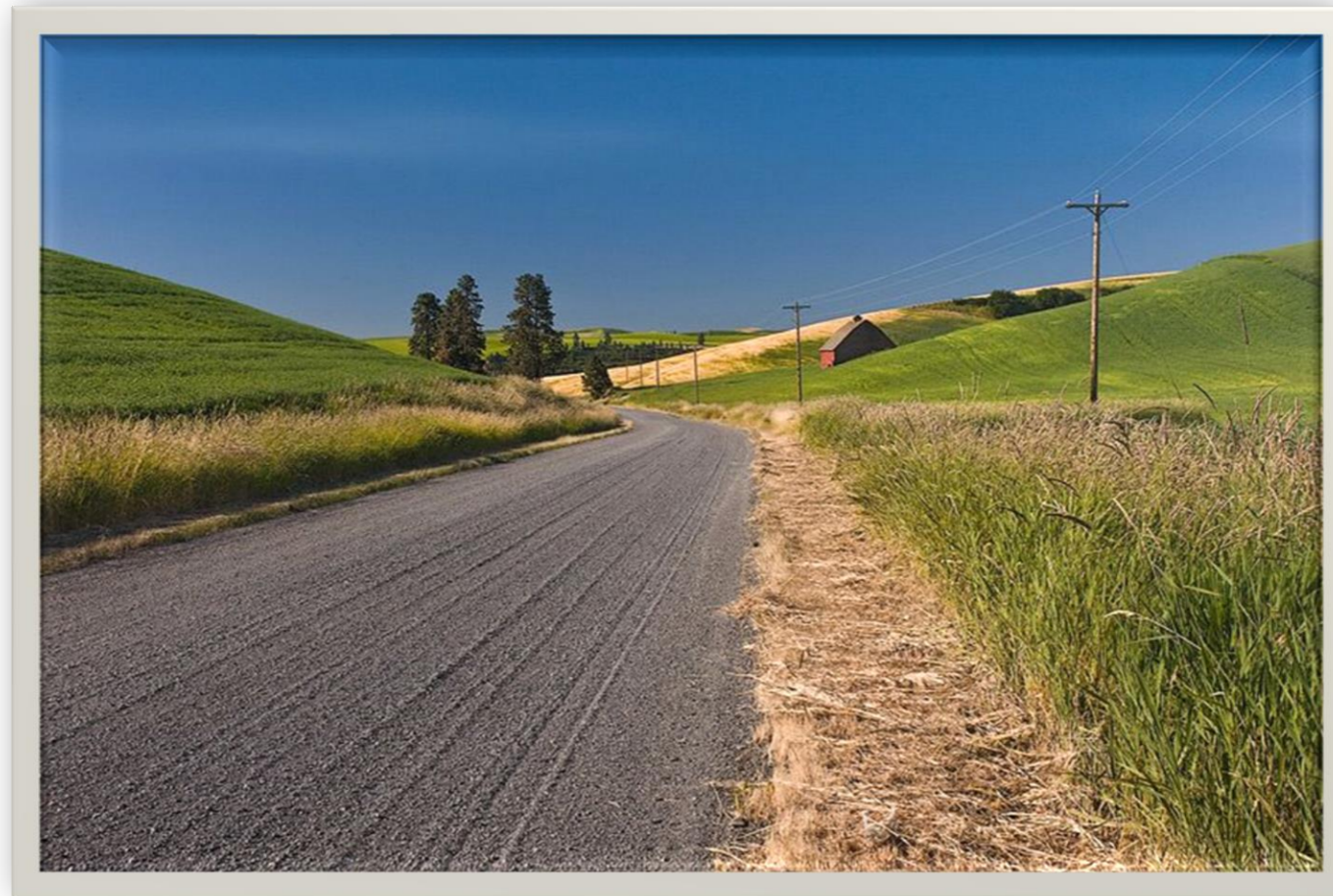


# System Responsibilities

## Where counties spend road dollars

### Preservation & Maintenance Projects

### Gravel Roads



# System Responsibilities

## Where counties spend road dollars

Grading	Litter control
Pothole repair	Slope repair
Crack sealing	Emergency repair
Roadway patching	NPDES inspections and maintenance
Rebuilding shoulders	Sidewalks
Ditching	Street lighting
Culvert maintenance	Traffic control devices
Stormwater facilities maintenance	Development review
Bridge inspection	Engineering support for minor activities
Bridge repair	Customer inquiries and support
Sign maintenance	Permitting compliance
Guardrail repair	Surveying
Traffic markings	Monument preservation
Snow and Ice	Admin and reporting
Street cleaning	Roadway preservation-Chip Sealing, paving
Brush control	Grant Match dollars
Ferries	

# Where counties spend road dollars

## West Cashmere Bridge Replacement Project



# Where counties spend road dollars

## West Cashmere Bridge Replacement Project

<b>PROJECT TOTAL</b>	<b>\$23,500,000</b>
<b>AWARDED</b>	
<b>BRAC</b> (Bridge Replacement Advisory Committee)	<b>\$12,000,000</b>
<b>MPO</b> (Metropolitan Planning Organization) <b>(STBGP)</b> (Statewide Transp. Block Grant Program)	<b>\$ 2,600,000</b>
<b>Legislative Discretionary (WSDOT)</b>	<b>\$ 2,000,000</b>
<b>RAP</b> (Rural Arterial Program)	<b>\$ 2,500,000</b>
<b>Private (Crunch Pak)</b>	<b>\$ 150,000</b>
<b>FMSIB</b> (Freight Mobility Strategic Investment Board)	<b>\$ 3,000,000</b>
<b>Local Match</b>	<b>\$ 1,250,000</b>

# Where counties spend road dollars

## West Cashmere Bridge Replacement Project

- **New Structure Length 952 feet**
- **Total Main Bridge Span 732 feet**
- **Bridge Ramps Down to a Roundabout**
- **Bridge Maintains the Only Overhead Crossing of the RR in and around Cashmere**



# Where counties spend road dollars

## Burlington Northern Overpass Bridge Replacement Project



## Where counties spend road dollars

### Burlington Northern Overpass Bridge Replacement Project

<b>PROJECT TOTAL</b>	
Design	\$1,402,406
Right-of-way	\$34,117
Construction	\$12,109,806
Construction Engineering and Management	\$1,821,701
	<u>\$15,368,030</u>
<b>AWARDED</b>	
BRAC (Bridge Replacement Advisory Committee)	\$12,000,000
Legislative Funds (Connecting Washington)	\$2,000,000
FMSIB (Freight Mobility Strategic Investment Board)	\$2,000,000
Economic Development (Skagit County)	\$500,000
TTBP (Tribal Transportation Bridge Program)	\$900,000
	<u>\$17,400,000</u>

# Where counties spend road dollars

## Burlington Northern Overpass Bridge Replacement Project

- **New Structure Length 1,194 feet**
- **Total Main Bridge Span 398 feet**
- **Wider: safer for bicycles and pedestrians**
- **Bridge allows for second track for RxR**





## Impacts of declining revenues

- Limited grant opportunities for county roads;
- Reduced service;
- Limited capacity for new legislative and permit requirements;
- Missed grant opportunities due to lack of matching funds;
- Deferred maintenance can result in costs 8x what it would cost in preservation dollars;
- Over 600 deficient bridges in the county system;
- 3,200+ fish blocking culverts in state injunction case area – \$5 billion and climbing

# The State of County Roads Opportunities

- Surface Transportation federal fund exchange program;
- Local revenue authority;
- Fish passage banking;
- Phasing out studded tires;
- Providing adequate funding for new responsibilities.

# Questions?