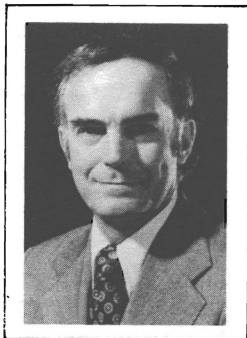


*The
Washington State*
Legislature



Pictorial Directory

44th SESSION
1975



Daniel J. Evans Governor

Daniel J. Evans, Republican, is the sixteenth governor of the State of Washington. He is the only governor in the state's history to have been elected for three terms.

Evans, a 49-year-old native of Seattle, was first elected to public office in 1956 as a state representative from King County's 43rd District. He served until his election as Governor in 1964. He was voted "Outstanding Freshman Legislator" in 1957. During the 1961 and 1963 sessions, he was the Republican floor leader.

The nation's senior Republican governor and tied for overall gubernatorial seniority, Evans has been chosen by his colleagues to serve in many leadership posts. Most recently, he was chairman of the National Governor's Conference for 1973-74. He was appointed by the Federal Energy Administration to the Project Independence Advisory Committee on national energy matters.

Evans was named "Public Official of the Year" for 1970 by the Washington Environmental Council. He received the Human Rights Award from the National Association of Intergroup Relations Officials in 1967, and he was the first person in the state and the first governor ever to receive the Scales of Justice Award from the National Council on Crime and Delinquency in 1968. He is a recipient of the "Silver Beaver" and "Silver Antelope" Awards given to adults for distinguished service to the Boy Scouts and the nation. Evans holds honorary Doctor of Law degrees from five colleges and an honorary Doctor of Engineering degree from Worcester Polytechnic Institute.

Before becoming the state's chief executive, Evans was a partner in a Seattle civil and structural engineering firm. He is a civil engineering graduate of the University of Washington, having earned his degrees (a B.S. in 1948 and an M.S. in 1949) between tours of duty as a Navy officer in the Second World War and the Korean War.

Evans is married to the former Nancy Ann Bell of Spokane. They have three children: Daniel, Jr., 14; Mark, 11, and Bruce, 8.

ELECTED OFFICIALS



John A. Cherberg
Lieutenant Governor

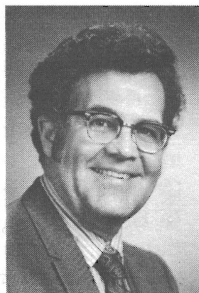
A. Ludlow Kramer
Secretary of State

Incumbent resigned
1/15/75—office
vacant as of this
publication date.



Robert S. O'Brien
State Treasurer

Robert V. Graham
State Auditor



ELECTED OFFICIALS

Slade Gorton

Attorney General



Frank (Buster) Brouillet

Superintendent of Public Instruction

Bert Cole

Commissioner of Public Lands



Karl Herrmann

Insurance Commissioner

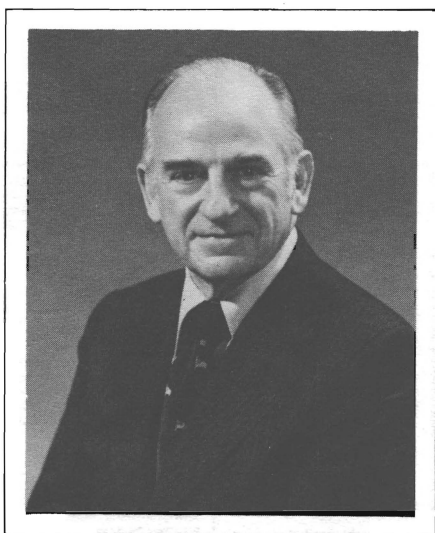
TABLE OF CONTENTS

State Elected Officials	1
Introduction	4
President of Senate	5
Senate Roster	6
Senate Biographies	7
Speaker of House	21
House of Representatives Roster	22
House of Representatives Biographies	23

INTRODUCTION

This "44th Session Pictorial Directory of the Washington State Legislature" contains pictures and biographical material about the nine statewide elected officials and members of the 1975 Legislature. This Directory is prepared by the Senate and the House of Representatives to assist those interested in becoming better acquainted with their legislators and the legislative processes of our state. These are the men and women who have been elected to provide our state with the laws that best serve the people.

SENATORS OF THE STATE OF WASHINGTON



JOHN A. CHERBERG
Lieutenant Governor
President of the Senate

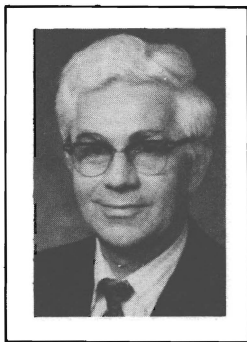
John Andrew Cherberg (Democrat) is serving his tenth session as President of the Senate and Ex-Officio Chairman of the Senate Rules Committee. He was first elected Lieutenant Governor in 1956, and reelected in 1960, 1964, 1968 and 1972. Born in 1910 in Pensacola, Florida, he received a life teaching diploma from the University of Washington in 1934. Formerly a teacher, he was head football coach at the University of Washington prior to his election. He and his wife, Betty, have three children.

ROSTER OF MEMBERS

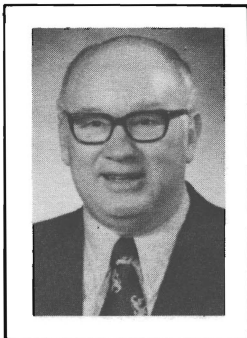
WASHINGTON STATE SENATE			
49 Members— 30 Democrats, 19 Republicans			
DIST.	PARTY	NAME	ADDRESS
19	D	BAILEY, Robert C.	P.O. Box 146, South Bend, WA 98586
26	D	BECK, C. W. "Red"	2400 Beach Drive, Port Orchard, WA 98366
8	R	BENITZ, Max E.	Route 2, Box 181, Prosser, WA 99350
45	R	BLUECHEL, Alan	12534 68th Ave. N.E., Kirkland, WA 98033
2	D	BOTTIGER, R. Ted	8849 Pacific Avenue, Tacoma, WA 98444
34	R	BLUFFINGTON, Nancy	5919 47th S.W., Seattle, WA 98136
41	R	CLARKE, George W.	1111 Hoge Building, Seattle, WA 98104
33	R	CUNNINGHAM, John E. (Jack)	P.O. Drawer 89307, Seattle WA 98188
4	D	DAY, William S.	2721 E. Sprague, Spokane, WA 99202
9	D	DONOHUE, Hubert F.	Rt. 2, Box 13, Dayton, WA 99328
37	D	FLEMING, George	1100 Lake Washington Blvd. South, Seattle, WA 98144
32	D	FRANCIS, Pete	7310 E. Green Lake Drive North, Seattle, WA 98115
42	D	GOLTZ, H. A. "Barney"	3003 Vallette Street, Bellingham, WA 98225
21	R	GOULD, Susan E.	19225 92nd W.. Edmonds, WA 98020
11	D	GRANT, Gary	25823 - 132nd S.E., Kent, WA 98031
6	R	GUESS, Sam C.	W. 408 33rd Avenue, Spokane, WA 99203
17	D	HENRY, Al	Rio Vista, White Salmon, WA 98672
31	D	HERR, Gordon	1818 Westlake North, Suite 112, Seattle, WA 98109
16	D	JOLLY, Dan	P.O. Box 10, Connell, WA 99326
48	R	JONES, John D.	P.O. Box 867, Bellevue, WA 98009
3	D	KEEFE, James E.	412 W. Glass, Spokane, WA 99205
25	D	KNOBLAUCH, Reuben A.	P.O. Box 306, Sumner, WA 98390
22	R	LEWIS, Harry B.	P.O. Box 2023, Olympia, WA 98507
5	R	LEWIS, R. H. (Bob)	W. 4329 Arrowhead Road, Spokane, WA 99208
38	D	MARDESICH, August P.	4712 Mermont Drive, Everett, WA 98203
49	D	MARSH, Dan	P.O. Box 1086, Vancouver, WA 98660
14	R	MATSON, Jim	Rt. 2, Box 2311, Selah, WA 98942
43	D	MCDERMOTT, James A.	1650 22nd Ave. E., Seattle, WA 98105
15	R	MORRISON, Sid W.	Route 1, Box 220 AA, Zillah, WA 98953
36	R	MURRAY, John S.	8 W. Roy Street, Seattle, WA 98119
28	R	NEWSCHWANDER, Charles E.	2140 Bridgeport Way, Tacoma, WA 98466
44	R	NORTH, Lois	10126 Radford Ave. N.W., Seattle, WA 98177
20	D	ODEGAARD, Gary M.	3415 Ives Road, Centralia, WA 98531
40	D	PETERSON, Lowell	Box 249, Concrete, WA 98237
47	R	PULLEN, Kent	22844 172nd Ave. S.E., Kent, WA 98031
29	D	RASMUSSEN, A. L. "Slim"	5415 "A" Street, Tacoma, WA 98408
35	D	RIDDER, Ruthe	5809 S. Roxbury, Seattle, WA 98118
24	D	SANDISON, Gordon	P.O. Box 2025, Port Angeles, WA 98362
46	R	SCOTT, George W.	2530 N.E. 105th Place, Seattle, WA 98125
12	R	SELLAR, George L.	1324 Terrace Drive, East Wenatchee, WA 98801
27	D	STORTINI, Joe	1623 Firlands Drive, Tacoma, WA 98405
18	D	TALLEY, Don L.	1583 Mt. Pleasant Road, Kelso, WA 98626
1	D	VAN HOLLEBEKE, Ray	354 Central Bldg., Seattle, WA 98104
30	D	von REICHBAUER, Peter	429 Public Lands Bldg., Olympia, WA 98504
23	D	WALGREN, Gordon L.	245 Fourth Street Bldg., Bremerton, WA 98310
10	R	WANAMAKER, F. "Pat"	519 West Wanamaker Road, Coupeville, WA 98239
13	D	WASHINGTON, Nat W.	42 "C" Street, N.W., Ephrata, WA 98823
7	D	WILSON, Bruce A.	P.O. Box F, Omak, WA 98841
39	D	WOODY, Frank J.	24228 - 47th, Woodinville, WA 98072

SENATORS

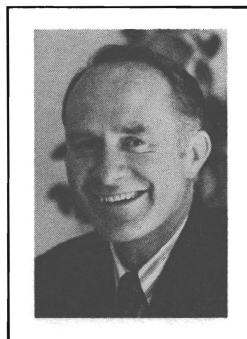
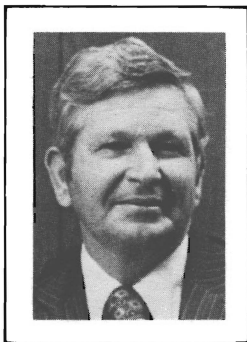
BAILEY, ROBERT C. (BOB) (Democrat), Majority Caucus Chairman. Senator from the 19th District comprising part of Pacific, and all of Grays Harbor County, served three sessions in the House. Elected to Senate in 1956. Born in 1918 in Raymond. Printer by trade, member of Typographical Union. From 1966-74, served as West. Admin. Asst. to Congresswoman Julia Butler Hansen. Served in the Navy during WW II. Member, Eagles, VFW, Am. Legion, So. Bend Kiwanis, Masons, Elks, Boy Scout Council, Episcopal Church. He and his wife, Lee, have one son, Michael, a student at the U of W.



BECK, C. W. "RED" (Democrat) Senator from the 26th District comprising parts of Kitsap and Pierce Counties. Appointed Feb. 1974 for the unexpired term, elected Nov. 1974 for a four-year term in the Senate. Served seven terms in the House. Born in 1908 in Bloomington, Ind. Attended Stanford University, and is self-employed as a property manager. Served in the Navy and is a retired Naval Ordnance Engineer. Member, Sons of Norway, Elks, Eagles, Grange, Kiwanis, D.A.V.'s, Fleet Reserve Assn. and So. Kitsap Chamber of Commerce. His wife's name is Hope Grace.



BENITZ, MAX E. (Republican) Senator from District 8 of Benton and Yakima Counties is serving his first session in the Senate and has served three sessions in the House of Representatives. Born in 1916 in Wathena, Kansas. He is self-employed in the agri-business. Past-president of the Washington State Farm Bureau Federation; Chairman, Coordinating Council for Vocational Education; past school board member, and former member of the board of directors of the Benton-Franklin County Fair. He and his wife, Marie, have five children.



BLUECHEL, ALAN (Republican) Senator from the 45th District of King County is serving his first session in the Senate and has served four terms in the House of Representatives. Born in 1924 in Edmonton, Alberta, Canada. Received a B.A.Sc. in electrical engineering, and a B.A. in General Studies from the University of British Columbia. Vice Chairman, Washington Land Planning Commission; World's Fair Commission-Expo '70, Osaka, Japan. He is president of Loctwall Corporation. He and his wife, Aylene, have two sons.

SENATORS



BOTTIGER, R. TED (Democrat) Senator from the 2nd District comprising part of Pierce and Thurston Counties, is serving his second session in the Senate and has served four terms in the House of Representatives. Born in 1932 in Tacoma. Graduate from University of Puget Sound with a B.A. degree and the University of Washington Law School. He is an attorney practicing in Tacoma. He and his wife, Darlene, have three children.

BUFFINGTON, NANCY (Republican)

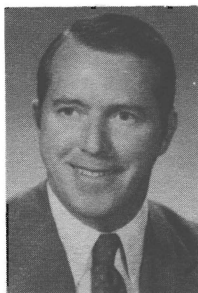
Senator from the 34th District of King County, serving her first term in the Senate. Born in Logan, Utah, in 1939. Formerly Aquatic and Women's P.E. Director, Seattle Jewish Community Center. Program Coordinator, Cardio-Pulmonary Research Institute (CAPRI) for four years. Presently attending Seattle Community College for AA degree in Business Administration. Board member West Seattle YMCA; Member, Juvenile Court, Municipal League, Am. Assoc. of Medical Technicians. Member and former instructor of catechism, Our Lady of Guadalupe. She has four children.



CLARKE, GEORGE W. (Republican), Minority Caucus Vice Chairman/Secretary. Senator from the 41st District of King County, served two sessions in the House and is serving his third session in the Senate. Born in Perry, Iowa, he is an attorney. Served as a naval officer in World War II. Served 20 years, Mercer Island School Board. Member, Seattle Chamber of Commerce, and Rotary. He and his wife, Helen, have three children.

CUNNINGHAM, JOHN E. (JACK) (Republican)

Senator from the 33rd District of King County, is serving his first session in the Senate and served one session in the House of Representatives. Born in 1931, raised in the East, educated at the University of San Francisco. Following service with the United States Air Force, he was employed in chemicals and lumber manufacturing. Now President of Northwest Containers, Inc. He and his wife, Margaret, have nine children.



SENATORS

DAY, WILLIAM S. (BILL) (Democrat)

Senator from the 4th District comprising part of Spokane and Whitman Counties, served five sessions in the House and is serving his fourth session in the Senate. Speaker of the House in 1963. Born in 1923 in Rockford, Illinois. Graduate, Palmer College of Chiropractic in Davenport, Iowa, is a Chiropractor. Served in the Army during WW II. Member, Rotary, Spokane Interstate Fair Board, Veterans of Foreign Wars. He and his wife, Lucy, have six children.



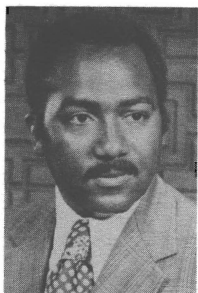
DONOHUE, HUBERT F. (Democrat)

Senator from the 9th District comprising Adams, Asotin, Garfield and parts of Columbia, Grant and Whitman Counties. He is serving his third term in the Senate. Has served as Chairman of the Senate Agriculture and Horticulture Committee and Revenue and Taxation Committee. He is presently serving as Chairman of the Senate Committee on Ways and Means. Born in 1921 in Dayton. Attended, Wash. State Univ., is a farmer. Member, Eagles, Elks, Am. Legion, Wash. Wheat Assn., Farm Bureau, Christian Church, Wash. Cattlemen's Assn. He and his wife, Evelyn, have four sons.



FLEMING, GEORGE (Democrat), Majority Caucus Vice Chairman.

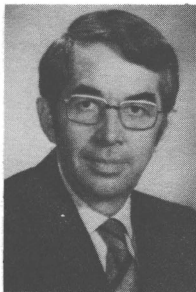
Senator, 37th District, King County. Served one session in House, serving third session in Senate. Born in 1938 in Dallas. Graduate, U. of W. with B.A. in Bus. Adm. 1960 and 1961 member Rose Bowl teams. Personnel Supv., Pac. N.W. Bell. Member of Public Pension Commission; State Urban, Racial, Rural Disadvantaged Com.; United Way Board, E. Madison YMCA; Advisory Board of Providence Hospital. He and his wife, Tina, have two daughters, Sonja and Yemi.



FRANCIS, PETE (Democrat)

Senator from the 32nd District of King County, served one session in the House, appointed to the Senate in 1969, he is serving his fourth session in the Senate. Born in 1934 in Seattle. Graduate, Stanford University with a B.A. in Political Science and Stanford Law School with a J.D. degree, is an attorney. Past President, Green Lake Chamber of Commerce; Member, Woodland Park Presbyterian Church; member, Municipal League. NOW, Lions, YMCA. He and his wife, Elva, have two sons.

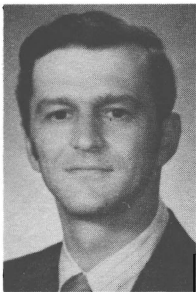
SENATORS



GOLTZ, H. A. "BARNEY" (Democrat)

Senator from the 42nd District, Whatcom County, is serving his first session in the Senate and has served one term in the House of Representatives. Born in 1924 in Minnesota. Graduate, Macalester College, B.A., and University of Minnesota, M.A., is Director of Campus Planning at Western Washington State College, Bellingham. He and his wife, Marguerite, have one son.

GOULD, SUSAN E. (Republican) Senator from the 21st District of Snohomish County, serving her first session. Born in Seattle, attended Roosevelt High School and Whitman College, graduated from the University of Washington in chemistry. Former research and analytical chemist, past president of Snohomish County League of Women Voters, organized and chaired Snohomish County Law and Justice Committee, currently member of Edmonds School Board. She and her husband, Ray, have three children.



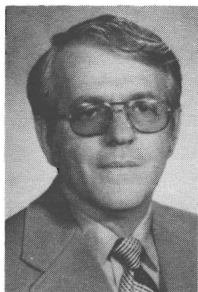
GRANT, GARY (Democrat) Senator from the 11th District of King County, is serving his second session. He served five sessions in the House of Representatives. Born in 1934 in Chippewa Falls, Wisconsin. Graduate, St. Martin's College with B.A. President, Public Service Employees Union. Former member, Junior Chamber of Commerce and Toastmasters. He and his wife, Tanya, have four children.

GUESS, SAM C. (Republican) Senator from the 6th District of Spokane County, is serving his seventh session. Born in 1909 in Greenwood, Mississippi. Graduate, University of Mississippi with B.S. in Civil Engineering. Served with the First U.S. Army in Europe. Member, Sigma Nu fraternity and Kiwanis Club. He and his wife, Dorothy, have two children.



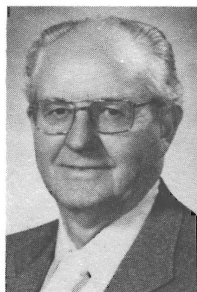
SENATORS

HENRY, AL (Democrat), President Pro Tem. Senator from the 17th District comprising Klickitat, Skamania, and part of Clark Counties. Served four sessions in the House and is serving his tenth session in the Senate. Born in Ness County, Kansas. Attended business school, is a Telephone Company Executive. Served in WW II and National Guard, Past President, Eagles; member, Elks. His wife's name is Anne.



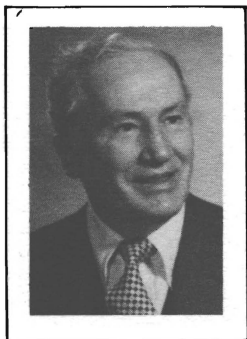
HERR, GORDON (Democrat) Senator from the 31st District of King County, served one session in the House and is serving his seventh session in the Senate. Born in 1926 in Seattle. Attended, University of Washington, is an association executive. He and his wife, Patricia, have five children.

JOLLY, DAN (Democrat) Senator from the 16th District comprising Franklin and Walla Counties and part of Columbia County, served four sessions in the House and is serving his third session in the Senate, being appointed January 1, 1971. Born in 1907 in Douglas County, is a farmer. Officer, Washington State Grange. He and his wife, Harriet, have two married daughters.



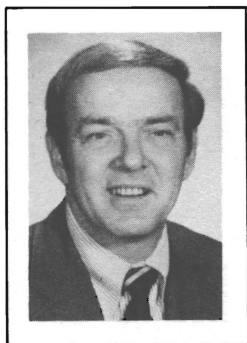
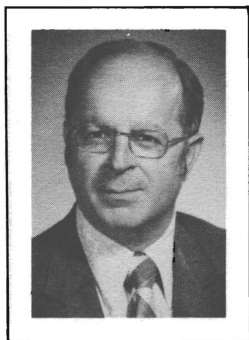
JONES, JOHN D. (Republican) Senator from the 48th District of King County. Served one session in the House of Representatives, and was appointed to the Senate January 8, 1973, and is serving his second session. Born in 1923 in Wales. Attended Wayne State University, is a manager of Pacific Northwest Bell Telephone. Past President, Bellevue Chamber of Commerce; President, Rotary; Chairman, North King County UGN. He and his wife, Ruth, have two children.

SENATORS



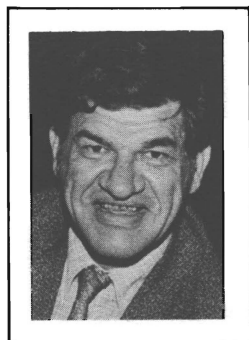
KEEFE, James E. (Democrat), Dean and Vice President Pro Tem. Senator from the 3rd District of Spokane County, is serving his fifteenth session in the Senate. Born in 1908 in New York City. Graduate, Gonzaga High School, is employed as a sales manager. Member, Elks, Moose. He and his wife, Eileen, have two sons.

KNOBLAUCH, REUBEN A. (Democrat), Majority Caucus Secretary. Senator from the 25th District, comprising part of Pierce and King Counties, served three sessions in the House and is serving his twelfth session in the Senate. Born in 1914 in Sumner. Graduate, Sumner High School, is a retired farmer. Member, Veterans of Foreign Wars, American Legion, Elks, Grange, and Knights of Columbus.



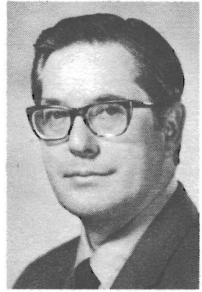
LEWIS, HARRY B. (Republican), Minority Floor Leader. Senator from the 22nd District of Thurston County, served two sessions in the House and is serving his sixth session in the Senate. Born in 1927 in Pittsburgh. Attended University of Puget Sound, and Graduate, University of Washington. He is owner and manager of Wood Fabricators, Inc. Served in the Army during WW II. Member, Society of American Foresters, Elks, Phi Delta Theta, American Legion. He and his wife, Jane, have three children.

LEWIS, R. H. (BOB) (Republican), Minority Whip. Senator from the 5th District of Spokane County, is serving his second session in the Senate. Born in Deer Park, Washington, in 1925. Graduate of University of Missouri. Vice President, Public Relations Officer, Lincoln First Federal Savings and Loan Association. Spokane City Councilman from 1964-69. Past President, Association of Washington Cities, served as Chairman of Spokane Board of Health, Member, State Urban Affairs Advisory Council and State Municipal Research Council. He and his wife, Peggye, have three children.



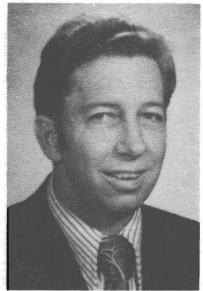
SENATORS

MARDESICH, AUGUST P. (Democrat), Majority Floor Leader. Senator from the 38th District of Snohomish County, served seven sessions in the House and is serving his seventh session in the Senate. Born in 1920 in San Pedro, California. Graduate, University of Washington Law School, is an attorney and commercial fisherman. He and his wife, Rosemary, have six children.



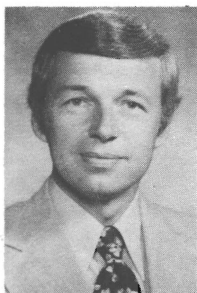
MARSH, DAN (Democrat) Senator from the 49th District of Clark County, is serving his second session in the Senate. He is a member of the Senate Demo. Campaign Com. Previously served four sessions in the House of Representatives from 1965 to 1973. Born in 1937 in Salem, Ore. Graduate, Willamette Univ. and Univ. of Oregon with B.A. and J.D. degrees, is an attorney. Served in National Guard. Member, Sigma Alpha Epsilon, Tau Kappa Alpha, Kiwanis and Grange; Board member, Clark County Social Services Admin. Board. He and his wife, Diane Kay, have three sons.

MATSON, JIM (Republican), Minority Caucus Chairman. Senator from the 14th District of Yakima County; is serving his fourth session. Born in 1927 in Yakima. Attended Whitman College and Yakima Valley College, is in the fruit growing, packing and shipping business. Veteran of WW II. Member, Elks, Kiwanis, and Chamber of Commerce. He and his wife, Judi, have five children.



McDERMOTT, JAMES A. (Democrat) Senator from the 43rd District, King County. Is serving his first term in the Senate and has served one term in the House (1970-71). Age, 37. Graduate, Wheaton College, B.A., and University of Illinois Medical School; is a child and adult psychiatrist. LCDR (MC) USNR, 1968-70. Former chairman, Coalition for Open Government. Member, United Way Mental Health and Alcoholism Panel; Allied Arts. He and his wife, Virginia, have two children.

SENATORS



MORRISON, SID W. (Republican) Senator from the 15th District of Yakima County, is serving his first session, preceded by eight years in the House of Representatives. Born in 1933 in Yakima. Graduate, Washington State University with B.S. in Agriculture, is a fruit grower. Served in the Army overseas. Former Chairman, Washington Apple Commission. Member, Methodist Church, Grange, Farm Bureau, Rotary, active in Scouting and United Way. He and his wife, Marcella, have four children.

MURRAY, JOHN S. (Republican) Senator from the 36th District of King County, served two sessions in the House and is serving his third session in the Senate. Born in 1925 in Albany, Missouri. Attended Stanford, and Graduate, University of Washington, is owner and publisher of the *Queen Anne News*. Currently president of the Washington Newspaper Publishers' Association and Chairman of the Oceanographic Commission of Washington. Combat Engineer in the Army. Member, Methodist Church. He and his wife, Virginia, have four children.



NEWSCHWANDER, CHARLES E. (Republican), Assistant Minority Floor Leader). Senator from the 28th District of Pierce County, served four sessions in the House and is serving his fourth session in the Senate. Born in 1920 in Tacoma. Attended University of Puget Sound and Graduate, University of Oregon Dental School, is a dentist. Served in WW II and Korean War. Member, Masons, Scottish Rite. He and his wife, Emma, have four children and one granddaughter.

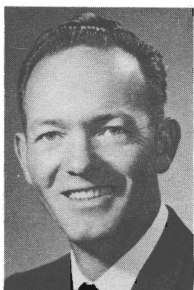
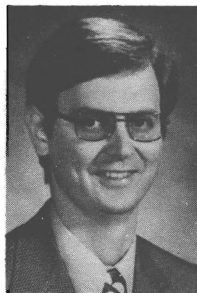
NORTH, LOIS (Republican) Senator from the 44th District of King County, is serving her first term in the Senate. Served three terms in the House of Representatives. Born in Berkeley, California. Graduate, University of California at Berkeley with B.A. and General Secondary Teaching Credentials. Former President, Seattle League of Women Voters; King County Freeholder. Trustee, Board of Northwest Hospital. She is employed by King County Department of Budget and Program Planning. She is the mother of three sons.



SENATORS

ODEGAARD, GARY M. (Democrat)

Senator from the 20th District comprising Lewis and Wahkiakum Counties and part of Cowlitz, Pacific and Thurston Counties, is serving his fourth session. Born in 1940 in Bellingham. Graduate, WWSC with B.A. in Education, Graduate work at U of W, is a teacher. Member, Alpha Grange, Centralia College Ed. Assn., Lewis County Pomona Grange, and International Reading Assn. Also member of Onalaska Presbyterian Church, Centralia-Chehalis Elks, and Chehalis Eagles. He and his wife, Kay, have two sons.

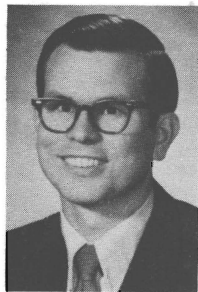


PETERSON, LOWELL (Democrat)

Senator from the 40th District comprising San Juan and Skagit Counties and part of Whatcom County, he is serving his fifth session. Born in 1921 in Pateros, Washington, is an oil distributor. Served in the Navy in WW II. Member, American Legion, Eagles and Elks. A widower, Senator Peterson has three children at the family home in Concrete.

PULLEN, KENT (Republican)

Senator from the 47th District serving his first session in the Senate, and has served one term in the House. Born in El Paso, Texas, in 1942. Graduate of University of New Mexico (B.S., 1963) and University of Washington (Ph.D., 1967). Former Assistant Professor of Chemistry at the University of Idaho. Currently works as a research engineer for the Boeing Company. He and his wife, Fay, have two children.



RASMUSSEN, A. L. "SLIM" (Democrat)

Senator from the 29th District of Pierce County. Has served eight terms in the House and is serving his sixth session in the Senate. Former Mayor of Tacoma. Born in Everett in 1909. He and his wife, Eleanor, have four children.

SENATORS



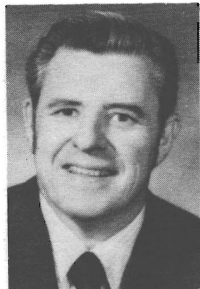
RIDDER, RUTHE (Democrat) Senator from the 35th District of King County. Elected to the Senate in November 1973 for the unexpired term. Reelected in November 1974 for a four-year term. Graduate of the University of Washington with a B.S. in Psychology. Member: Council on Aging, Co-President South Shore Middle School PTA, Rainier Beach Women's Club, Trustee, St. Timothy Lutheran Church. She and her husband, Bob, have five children.

SANDISON, GORDON (Democrat) Senator from the 24th District comprising Clallam, Jefferson, and Mason Counties and part of Thurston County. Served five sessions in the House and is serving his ninth session in the Senate. Born in 1919 in Auburn. Graduate, University of Washington, is an Insurance Broker and Realtor. Served in the Marines during WW II. Member, Eiks, Eagles, VFW, Disabled American Veterans, Grange, American Legion, Alpha Tau Omega. He and his wife, Muriel, have five children.



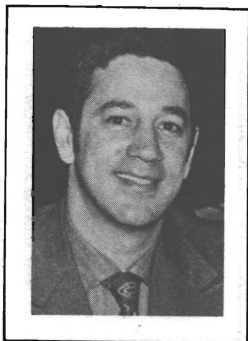
SCOTT, GEORGE W. (Republican), Second Assistant Minority Floor Leader. Senator from the 46th District of King County, served one session in the House of Representatives and is serving his third session in the Senate. Born in 1937 in Seattle. Graduate, Whitworth College with B.A. in Philosophy. Holds M.A. and Ph.D. degrees from University of Washington in History, is Assistant to the Dean of the University of Washington School of Medicine for Development. His wife, Carol, teaches in the School of Music.

SELLAR, GEORGE L. (Republican) Senator from the 12th District comprising Chelan and Douglas and part of Grant and Okanogan Counties, serving his third session in the Senate. Born in 1929 in Chicago, manager of Eye & Ear Optical in Wenatchee. Attended Wen. Valley College and Univ. of Nebraska. Member, Wash. St. Dispens. Optician Assn., Pac. Coast Contact Lens Society, Chamber of Commerce, Douglas County Regional Plan. Bd. He lives in East Wenatchee with his wife, Alma, and daughter, Kathy.

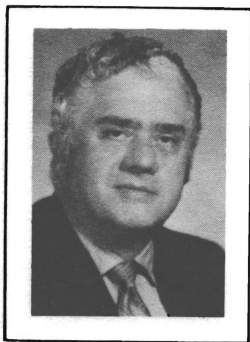


SENATORS

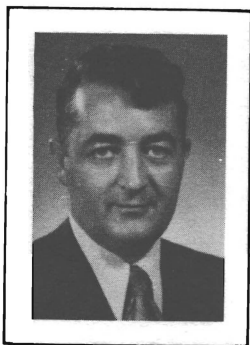
STORTINI, JOE L. (Democrat) Senator from the 27th District of Pierce County, is serving his fourth session. Born in 1932 in Tacoma. Graduate, University of Puget Sound with B.A. in Education and Oregon State University with M.A. in Education, is a high school teacher and football coach. Member, Italian Lodge, WEA, Bellarmine Boosters. He and his wife, Carol, have three children.



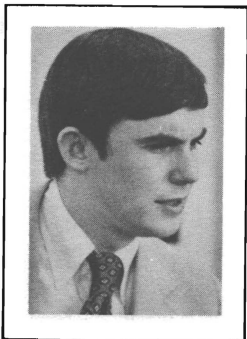
TALLEY, DON L. (Democrat) Senator from the 18th District comprising part of Cowlitz and Clark Counties, is serving his tenth session. Born in 1918 in Tacoma. Graduate, high school, is employed as a Safety Supervisor for the Port of Longview. Served in the Navy during WW II. Vice Chairman Oceanographic Commission of Washington. Member, Masons, Elks, Moose, Eagles, American Legion, Grange, and D.A.V. He and his wife, Deloris, have four children.



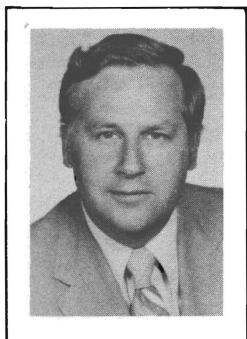
VAN HOLLEBEKE, RAY (Democrat) Senator from the 1st District comprising part of King and Snohomish Counties, is serving his second session in the Senate. Born in Illinois in 1929. B.C.S. in Finance, Seattle University, Juris Doctor, Gonzaga University. Korean War veteran. He and his wife, Donna, have nine children.



von REICHBAUER, PETER (Democrat) Senator from the 30th District, comprising So. King County (Auburn, Federal Way, Kent and Vashon Island). Elected to Senate in Nov. 1973 for the unexpired term; reelected in Nov. 1974 for a four-year term. Born in Seattle, raised in Tacoma, graduate of University of Alabama, commissioned in the U.S. Army, and is President of Synergistic Invest. Inc.; Kiwanis (Bd. of Direct.), Wash. Asian-Amer. Assn. (Bd.), Jaycees, C of C, Beta Theta Pi, Ducks Unltd., and others.



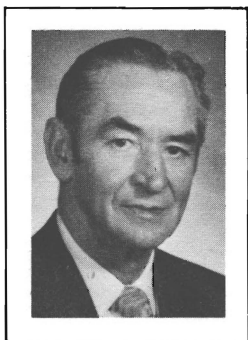
SENATORS



WALGREN, GORDON L. (Democrat), Majority Whip. Senator from the 23rd District of Kitsap County, served one session in the House and is serving his fourth session in the Senate. Born in 1933 in Bremerton. Graduate, University of Washington with B.A. and J.D. degrees, is an attorney. Member, Elks, Eagles, Kiwanis, Masonic Orders. Former Prosecuting Attorney, Kitsap County. Bremerton City Attorney. Holder, Freedoms Foundation Award. He and his wife, Sue, have two daughters.

WANAMAKER, F. (PAT) (Republican)

Senator from the 10th District of Snohomish (part) and Island Counties. Has served three terms in the House of Representatives, and is serving his second session in the Senate. Born in Port Townsend. Educated at the University of Washington. He is a retired farmer. Member, Methodist Church, Masons, Chamber of Commerce, Lions and Elks. He and his wife, Irene, have four children.

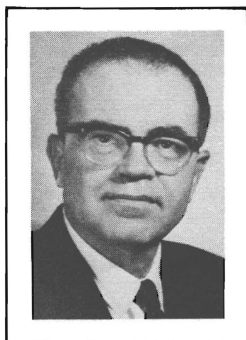


WASHINGTON, NAT W. (Democrat)

Senator from the 13th District comprising Kittitas and part of Grant and Yakima counties. Served one session in the House and is serving his thirteenth session in the Senate. Born in 1914 in Coulee City. Graduate, University of Washington Law School, is an attorney. Served in the Air Force in WW II. President, Western Conference of Council of State Governments, 1971-72. Member, Grange, Masonic Lodge. He and his wife, Wanda, have two sons.

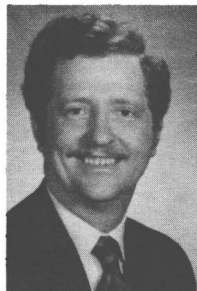
WILSON, BRUCE A. (Democrat)

Senator from the 7th District comprising Ferry, Stevens, Pend Oreille and Lincoln Counties and portions of Okanogan and Spokane Counties. Serving his second term. Born in 1921 in Chicago. Graduate, Northwestern University. Weekly newspaper publisher. Past president, Omak Chamber of Commerce and Okanogan County Historical Society. He and his wife, Merilyn, have four children.

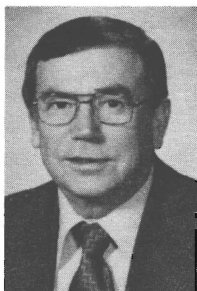
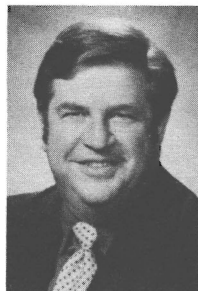


SENATORS

WOODY, FRANK J. (Democrat) Senator from the 39th District of Snohomish and King Counties (parts), is serving his second session in the Senate. Born in Helena, Montana in 1937, he has been a resident of Snohomish County for thirty-three years. Graduate of the University of Washington and the University of Washington Law School, he is a practicing attorney. He and his wife, Dianne, have two children, Elizabeth and Patrick.

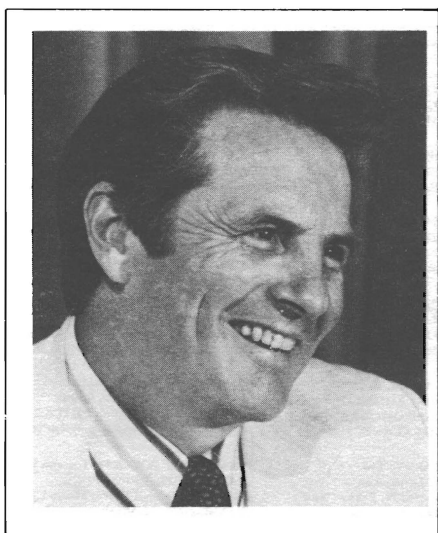


SNYDER, SID (Democrat) Secretary of the Senate, elected May 1969, and serving his fourth session. Was Assistant Chief Clerk and Acting Chief Clerk of the House from 1957 through May, 1969. First worked for the Legislature in 1949. Born in 1926 in Kelso. Attended Lower Columbia College, owns and operates a supermarket. Past Director of Washington State Food Dealers Association. Member, Elks, Lions. He and his wife, Bette, have three children.



JOHNSON, CHARLIE (Democrat) Sergeant at Arms of the Senate for each session since 1957. A member of the House in 1951, he served as Sergeant at Arms of the House in 1955. Born in 1911 in Elko, Wyoming. Member Elks and Washington Athletic Club.

HOUSE OF REPRESENTATIVES OF THE STATE OF WASHINGTON



LEONARD A. SAWYER
Speaker of the House

Leonard A. Sawyer (Democrat), serving his second session as Speaker of the House, has represented the 25th District of Pierce County since 1954. Born in Puyallup in 1925, he is a graduate of the University of Puget Sound and the University of Washington Law School. Served in the U.S. Navy during WW II, was a former prosecuting attorney and is currently practicing law in Puyallup.

ROSTER OF MEMBERS

98 MEMBERS HOUSE OF REPRESENTATIVES

62 DEMOCRATS
36 REPUBLICANS

DIST.	PARTY	NAME	ADDRESS
27	D	ADAMS, A. A.	3418 Shorecliff Drive N.E., Tacoma 98422
9	R	AMEN, Otto	Route 1, Box 45, Ritzville 99169
11	D	BAGNARIOL, John	2008 S.E. 17th Court, Renton 98055
33	R	BARNES, Richard O.	18118 6th Ave. S.W., Seattle 98166
49	D	BAUER, Albert	13611 N.E. 20th Ave., Vancouver 98665
22	D	BAUSCH, Del	1359 South 2nd Ave., Tumwater 98502
42	D	*BECKER, Mary Kay	P.O. Box 81, So. Bellingham Station, Bellingham 98225
1	D	BENDER, Rick S.	3511 N.E. 158th Place, Seattle 98155
40	R	BERENTSON, Duane	P.O. Box 426, Burlington 98233
46	R	BLAIR, Scott	8712 25th Avenue N.E., Seattle 98115
8	D	*BOLDT, Jim	2401 W. Canal Drive, Kennewick 99336
6	R	*BOND, R. M. "Dick"	N. 411 Havana St., Spokane 99202
1	R	BROWN, Art	16020 Densmore Avenue N., Seattle 98133
34	D	CECCARELLI, Dave	1330 Harbor Avenue S.W., Seattle 98116
45	R	*CHANDLER, Rod	13003 N.E. 143rd, Kirkland 98033
19	D	CHARETTE, Robert L.	P.O. Box 63, Aberdeen 98520
44	D	CHARNLEY, Donn	19344 11th Avenue N.W., Seattle 98177
35	D	CHATALAS, William "Bill"	4803 42nd Avenue South, Seattle 98118
39	D	CLEMENTE, Art	4422 228th S.E., Bothell 98011
8	D	*COCHRANE, Pat	1636 Howell Ave., Richland 99352
24	D	CONNER, Paul H.	Route 4, Box 355, Sequim 98382
12	R	CURTIS, Bob	P.O. Box 0188, East Wenatchee 98801
15	R	*DECCIO, Alex A.	P.O. Box 1343, Yakima 98901
43	D	DOUTHWAITE, Jeff	5518 31st N.E., Seattle 98105
41	R	*DUNLAP, Ron	3129 109th S.E., Bellevue 98004
2	D	EHLERS, Wayne	13203 South J St., Parkland 98444
36	R	EIKENBERRY, Ken	1644 32nd West, Seattle 98199
37	D	ENG, John	P.O. Box 18088, Seattle 98118
2	D	ERICKSON, Phyllis K.	P.O. Box 44487, Parkland 98444
21	D	*FISCHER, John M.	23424 88th W., Edmonds 98020
13	R	FLANAGAN, S. E. "Sid"	Route 1, Box 205, Quincy 98848
10	D	FORTSON, Eleanor A.	4008-S West Camano Drive, Camano Island 98292
48	R	FREEMAN, Kemper, Jr.	P.O. Box 1012, Bellevue 98009
30	D	GAINES, Robert E. "Bob"	24 B St. N.E., Auburn 98002
29	D	GALLAGHER, P. J. "Jim"	125 South 72nd, Tacoma 98408
25	D	GASPARD, Marcus S.	1313 25th N.E., Puyallup 98371
48	R	GILLELAND, James E.	3234 Hunts Point Road, Bellevue 98004
28	R	*HALEY, Ted	5800 100th St. S.W. #30, Tacoma 98499
26	D	*HANNA, Ron	P.O. Box 5313, Tacoma 98405
13	D	HANSEN, Frank "Tub"	9018-A McConnell Drive, Moses Lake 98837
40	R	HANSEY, Don	P.O. Box 1058, Bellingham 98225
7	D	HAUSSLER, Joe D.	Box 949, Omak 98841
26	D	HAWKINS, John R.	3102 North Monroe, Tacoma 98407
16	R	HAYNER, Jeannette C.	830 E. Chestnut, Walla Walla 99362
22	R	HENDRICKS, John L.	1923 Water Street, Olympia 98501
44	D	*HURLEY, George S.	10709 1st Ave. N.W., Seattle 98177
3	D	HURLEY, Margaret	E. 730 Boone, Spokane 99202
20	D	JASTAD, Elmer	Box 67, Morton 98356
28	R	JUELING, Helmut L.	215 Contra Costa, Tacoma 98466
		*New Member	

ROSTER OF MEMBERS

98 MEMBERS

HOUSE OF REPRESENTATIVES

62 DEMOCRATS
36 REPUBLICANS

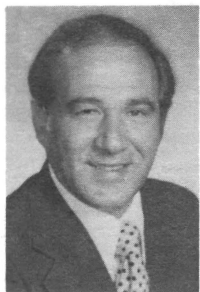
DIST.	PARTY	NAME	ADDRESS
20	D	KALICH, Hugh	2224 18th Avenue, Chehalis 98532
16	D	KILBURY, Charles D.	P.O. Box 2482, Pasco 99302
38	D	KING, Richard "Dick"	309 77th Place S.W., Everett 98201
4	D	KNOWLES, Walt O.	W. 911 Sprague, Spokane 99204
46	R	KRAABEL, Paul	7728 29th N.E., Seattle 98115
4	R	KUEHNLE, James P.	S. 1122 Skyline Place, Spokane 99206
17	D	LAUGHLIN, Eugene L.	734 N.W. 23rd, Camas 98607
34	R	LECKENBY, William	9105 Fauntleroy Way S.W., Seattle 98136
33	R	*LEE, Eleanor	1431 S.W. 152nd, Seattle 98166
5	D	LUDERS, Edward T.	N. 5620 Moore, Spokane 99208
31	D	LYSEN, King	12864 Shorecrest Drive S.W., Seattle 98146
38	D	MARTINIS, John	1917 Broadway, Everett 98201
45	R	MATTHEWS, Gary Lee	14157 123rd Avenue N.E., Kirkland 98033
37	D	MAXIE, Peggy Joan	3302 E. Pine, Seattle 98122
3	D	MAY, William J. S. "Bill"	Sans Souci West, W. 3231 Boone Ave., Sp. 711, Spokane 99201
5	D	MCCORMICK, Geraldine	W. 1829 Northridge Ct. #4, Spokane 99208
49	D	*MCKIBBIN, John S.	11205 N.E. 10th Ave., Vancouver 98665
39	D	MOON, Charles	Route 2, Box 427A, Snohomish 98290
42	D	*MOREAU, Art	2101 Eric, Bellingham 98225
21	R	NELSON, Gary A.	18423 High Street, Edmonds 98020
15	R	NEWHOUSE, Irving	Route 1, Box 130, Mabton 98935
47	D	NORTH, Frances C.	Box 441, North Bend 98045
35	D	O'BRIEN, John L.	1305 Joseph Vance Bldg., Seattle 98101
6	R	PARDINI, A. J. "Bud"	E. 1625 20th Avenue, Spokane 99203
18	R	PARIS, William "Bill"	620 Oregon Way, Longview 98632
29	D	PARKER, Mike	5434 South "I", Tacoma 98408
9	R	PATTERSON, E. G. "Pat"	N.E. 400 Campus, Pullman 99163
32	D	PERRY, Robert A.	1154 N. 92nd Street, Seattle 98103
43	R	*PETERSON, Warren E.	1927 25th Avenue E., Seattle 98112
41	R	POLK, William	7220 92nd Avenue S.E., Mercer Island 98040
23	D	RANDALL, Robert	2528 Wheaton Way, Bremerton 98310
24	D	SAVAGE, Charles R.	2011 King Street, Shelton 98584
25	D	SAWYER, Leonard A.	2723 East Main, Puyallup 98371
7	R	SCHUMAKER, William "Bill"	208 W. 5th, Colville 99114
14	D	*SEEBERGER, Ed	2506 W. Yakima Avenue, Yakima 98902
47	D	*SHERMAN, Marion Kyle	24629 S.E. 200th, Maple Valley 98038
11	D	SHINPOCH, A. N. "Bud"	361 Maple Avenue N.W., Renton 98055
19	D	*SMITH, Edward P. "Eddie"	511 2nd Avenue, Aberdeen 98520
23	D	SMITH, Rick	P.O. Box 68, Silverdale 98383
36	D	SOMMERS, Helen	2516 14th West, Seattle 98119
18	D	THOMPSON, Alan	112 Pleasant Hill Lane, Kelso 98626
12	R	TILLY, Earl F.	1509 Jefferson Street, Wenatchee 98801
31	D	VALLE, Georgette	1434 S.W. 137th, Seattle 98166
30	D	WARNKE, Frank J.	29457 51st South, Auburn 98002
14	R	*WHITESIDE, Jim	3612 Howard Avenue, Yakima 98902
32	D	WILLIAMS, Al	4801 Fremont North, Seattle 98103
10	R	WILSON, Simeon R. "Sim"	P.O. Box 145, Marysville 98270
27	D	WOJAHN, Lorraine	3592 East Kay Street, Tacoma 98404
17	R	ZIMMERMAN, Hal	1432 N.E. 6th Avenue, Camas 98607
		*New Member	

REPRESENTATIVES



ADAMS, A. A. (Democrat) Representative from the 27th District of Pierce County, is serving his fourth term. Born in Bellingham, Washington. Graduated from Palmer College of Chiropractic, in Davenport, Iowa. Past President of American Chiropractic Association. Former Chairman of Tacoma Public Utility Board, Board of Directors of Boys Club of America. Member, Masonic bodies, Elks and Chamber of Commerce. He and his wife, Mildred, have one daughter.

AMEN, OTTO (Republican) Representative from Legislative District 9 comprising Adams, Asotin, Garfield, Columbia, parts of Grant and Whitman counties, is serving his fifth term. Graduate, W.S.U. with a B.S. in Pharmacy, is engaged in farming. Member, Grange, Lions International, and Chamber of Commerce. Served as President of Washington State Wheat Association, Washington Wheat Commission, and State Coordinator of Food for Peace. He and his wife, Doris, have two sons.



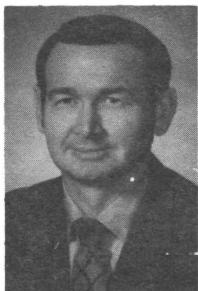
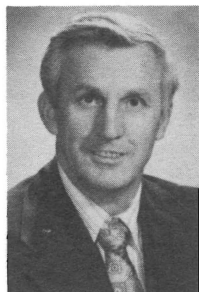
BAGNARIOL, JOHN (Democrat) Representative from the 11th District is serving his fifth term. Born in 1932 in Renton. Active in church, Kiwanis, Boys Clubs and community service. He is currently self-employed as an insurance agent. He and his wife, Edna, have eight children.

BARNES, DICK (Republican) Representative of the 33rd District, Des Moines, Normandy Park, the Sea-Tac Airport and parts of Burien serving his first term. Born in Iowa he left the University of Illinois to become an Air Force pilot during World War II. As a Reservist he was recalled for duty during the Korean and Viet Nam wars. Educated as a Geophysical Engineer at the Colorado School of Mines, employed by the Boeing Company since 1955 and is presently a Systems Analyst in Air Traffic Control Studies. He and his wife, Sylvia, have three children.



REPRESENTATIVES

BAUER, ALBERT (Democrat) Representative from the 49th District of Clark County, is serving his third term. Born in 1928 in Lewistown, Montana. Graduate, Portland State College with B.S. in Political Science and Oregon State College with Masters in Education; is a teacher. Past President, Community Club, PTA; Vancouver Education Association. Member, Kiwanis, Grange, American Legion. He and his wife, Patricia, have three children.



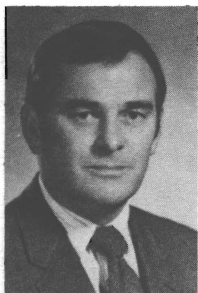
BAUSCH, DEL (Democrat) Representative from District 22, Thurston County. Is serving his second term. Born in 1935 in Olympia. Attended Clark College, Vancouver and presently is a safety engineer. Salvation Army Board member, Shoreline Community College Labor Advisory Board, Tumwater Comprehensive Planning Committee, member. He and his wife, Nancy, have three sons, Kevin, Keith and Kelly.

BECKER, MARY KAY (Democrat) Representative from the 42nd District, western Whatcom County. Serving first term. Born in 1946 in Aberdeen, Washington, and raised on the Olympic Peninsula at Kalaloch. Writer. Graduate, Stanford University; also received B.A. from Western Washington State College. Worked for VISTA and Legal Services.



BENDER, RICK S. (Democrat) Second term Representative from the 1st District of north King and south Snohomish Counties. Born in Fairbanks, Alaska in 1949. Attended the U of W and will graduate with a degree in economics from UPS; served in the U.S. Army Signal Corps, Vietnam veteran.

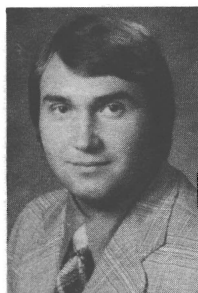
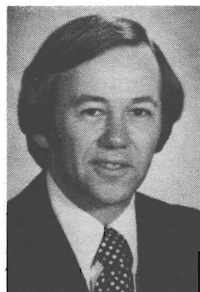
REPRESENTATIVES



BERENTSON, DUANE (Republican)

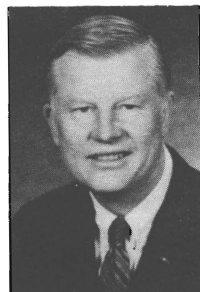
Representative from the 40th District comprising San Juan, Skagit and Whatcom counties, is serving his seventh term. Assistant Republican Leader. Born in 1928 in Anacortes. Graduate, Pacific Lutheran University, he is in the securities business. He and his wife, Joanne, have five children.

BLAIR, SCOTT (Republican) from the 46th District in Seattle, is serving his third term in the House. He is an engineering graduate of the University of Washington and is active in community service groups, including CHECC and the Coalition for Open Government. He serves on the Appropriations, Local Government, and the Financial Institutions Committees.



BOLDT, JAMES M. (Democrat) Representative from the expanding nuclear and agricultural 8th district of eastern Washington. Born, Richland, Washington in 1950, he is a resident of Kennewick. Boldt, an Environmental Science (Biology) graduate of W.S.U., is a sales associate and director of Environmental Systems Analysis, of Ben Phillips, Inc., Kennewick. Jim Boldt is a freshman in the forty-fourth Legislature.

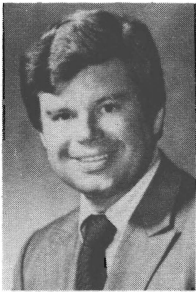
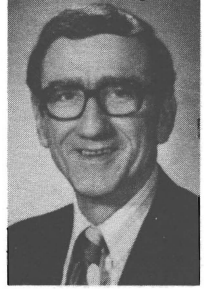
BOND, R. M. (DICK) (Republican) Representative from 6th District of Spokane County, serving his first term. Born in Spokane, educated at Calif. Institute of Tech., Univ. of Calif. (ASB President), Univ. of So. Calif. with degrees in Mech. Engr., Bus. Adm., and a Comm. Pilots lic. Dick is a Marine Corps WW II vet., Rotarian, American Legion, Director of Natl. LP-Gas Assoc., Air Force Assoc., Eagle Scout and a Christian. He founded and operates Solar Gas Company in Spokane and Calgary. He and his wife, Patty, have three sons.



REPRESENTATIVES

BROWN, ARTHUR C. (Republican)

Representative from the 1st District comprised of parts of King and Snohomish counties, is serving his fourth term. Born in 1921 in Atlanta, Georgia. Graduate, University of Washington. A retired navy pilot. He is currently employed by Boeing. Past President, Washington Association of County Boards of Education. Member, Seattle-King County Metropolitan Study Commission, and Seattle-King County Municipal League. He and his wife, Ann, have five children.

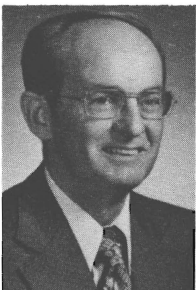
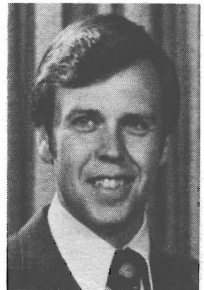


CECCARELLI, DAVE (Democrat)

Representative from the 34th District of King County, serving his fifth term. Graduate, Seattle University with B.C.S. in commerce and finance. Employed by Quadrant Corporation in commercial and industrial real estate sales. Past President, West Seattle Council on Youth Affairs; member, Seattle-King County Metropolitan Study Commission; West Side Italian Civic Club; Knights of Columbus; West Seattle Chamber of Commerce and Sons of Italy.

CHANDLER, ROD (Republican)

Representative from the 45th District comprising the northeast portion of King County, is serving his first term. Born in 1942 in La Grande, Oregon. A former television news correspondent, he is now an Assistant Vice President at Washington Mutual Savings Bank. He and his wife, Joyce, have a son, John, 4, and a daughter, Amanda, 2.



CHARETTE, ROBERT L. (Democrat)

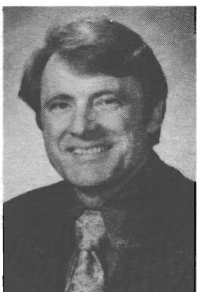
Representative from the 19th District comprising Pacific (part) and Grays Harbor counties. Served one term in the Senate and is serving his fifth term in the House. He is Majority Floor leader. Born in 1923 in Aberdeen. Graduate, Grays Harbor College and University of Washington Law School, he is partner in a law firm. Member, Phi Kappa Psi, Phi Delta Phi, Grays Harbor and American Bar Association, VFW, and Military Order Purple Heart. He and his wife, Betty, have three daughters.

REPRESENTATIVES



CHARNLEY, DONN (Democrat) from the 44th District, Northwest King County, is serving his third term. 47 years old, Donn attended Seattle U, U of Minnesota and U of Washington, holds a M. S. in Geology from U of W. He is a professor of Geology at Shoreline Community College. Member-Richmond Beach Community Council and Shoreline Library Board. Donn and Lucy have five children.

CHATALAS, WILLIAM (BILL) (Democrat) Representative from the 35th District of King County, is serving his eighth term. Born in 1907 in Istanbul, Turkey. Attended University of Washington Extension School. President of a real estate and insurance firm; Chairman, House Democratic Caucus; Member, Executive Board, Muscular Dystrophy Association; Mt. Baker Improvement Club, Rainier Businessmen's Club, Chamber of Commerce, Municipal League, Order of Ahepa, Jackson Street Community Council. He and his wife, Goldie, have three sons.



CLEMENTE, ART (Democrat) Representative from the 39th District, comprising parts of King and Snohomish counties. Born in Hoquiam in 1925, King County Labor Council, Director, AFL-CIO Community Services Alcoholism Program. He is a Marine Corps veteran of WW II and a V.F.W. member, involved in citizen groups in schools, outdoor recreation and sportsman groups and youth activities. He has three sons.

COCHRANE, PAT (Democrat) Representative from the 8th District comprising all of Benton County and one precinct in Yakima County, is serving her first term this year. A native of Montana, has lived in Washington since 1947. A graduate of Montana State at Bozeman with a B.S. Degree in Zoology; holds a Masters Degree from Boston University in Biology. Co-owner of the Women's Resource Center and Upstairs Book and Gift Mart in Richland. Married to Gordon Cochrane, daughter Helen, son Jim and grandsons Jerry and Jim.



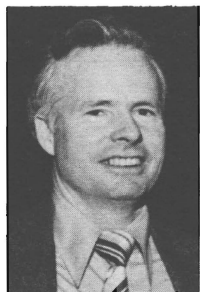
REPRESENTATIVES

CONNER, PAUL H. (Democrat) Representative from the 24th District comprising Clallam, Mason, Jefferson and part of Thurston counties. Appointed to the Senate in 1957, is now serving his ninth term in the House. Born in 1925 in Port Angeles. Attended, Port Angeles Business College, Western Washington State College and University of Washington. He and his wife, Thelma, have five children.



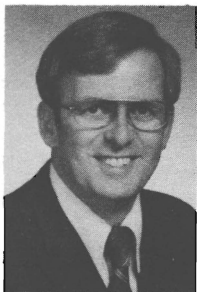
CURTIS, BOB (Republican) Representative from the 12th District, comprising Chelan, Douglas and parts of Grant and Okanogan counties, is serving his fourth term. Republican Caucus Chairman. Born in 1933 in Wenatchee. Graduate, Pacific Lutheran University. Business: President, Curtis-C Travel Service. Past President, Washington State Jaycees; member, Wenatchee Chamber of Commerce; member, executive committee Association of Washington Businesses. He and his wife, Patty, have four children; they are members of Grace Lutheran Church, Wenatchee.

DECCIO, ALEX A. (Republican) Representative from the 15th District comprising lower half and north west part of Yakima County. First term. Born in Walla Walla, Washington. Attended Moxee School system. Served in Air Force. Insurance broker and part time farming. He and his wife, Lucille, have 6 daughters and 2 sons.



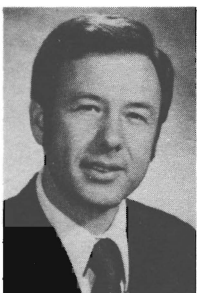
DOUTHWAITE, JEFF (Democrat) Representative from District 43 of King County, is serving his third term. Born in 1929 in Montreal. Graduate, University of Washington with B.S. and M.S. in Electrical Engineering, is a professor at University of Washington. Member, University District Community Council, AAUP, Ravenna Community Assn., University District Chamber of Commerce and Common Cause. He and his wife, Mary Louise, have three children.

REPRESENTATIVES



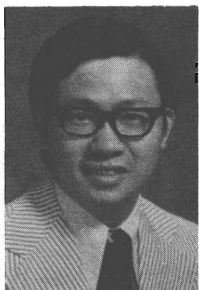
DUNLAP, RON (Republican) is serving his first term as a Representative from the 41st District. Born in South Bend, Indiana, he studied Engineering at Purdue University (B.S. and M.S.) and then Economics at Harvard University. He is a member of management with Boeing Commercial Airplane Company's Sales Organization in Renton. He and his wife, Allison, live in Bellevue with their two daughters, Marcia and Lynne.

EHLERS, WAYNE (Democrat) Representative from the 2nd District of Pierce and Thurston counties, is serving his second term. Born in Bellingham in 1938, he is an educator in both the public schools and university. Graduate of WWSC (B.A. and B.S.) and the University of Denver (M.A.). Active in professional and civic organizations. He and his wife, Frances, have two sons.



EIKENBERRY, KEN (Republican) Representative from the 36th District of King County, is serving his third term. Assistant Republican Leader. Born in 1932 in Wenatchee. Graduate, Washington State University and University of Washington School of Law. Former FBI agent, now an attorney. Former Deputy Prosecuting Attorney for King County. His wife's name is Beverly.

ENG, JOHN (Democrat) Representative from the 37th District of King County. He is serving his second term. Born in 1942 in Hong Kong. Graduate of University of Washington with B.A. in Business Administration. Former Peace Corps Volunteer. During 43rd Legislative session served on Social and Health Services, Education, Constitution and Elections committees.



REPRESENTATIVES

ERICKSON, PHYLLIS K. (Democrat)

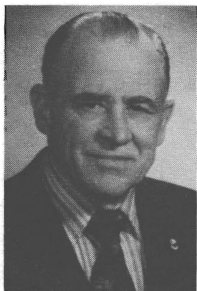
Representative from the 2nd District is serving her second term. A University of Utah graduate, she is a homemaker. Served as Chairman and member of local school board and District X1 Community College board chairman and member. Former State Board member, League of Women Voters, P.T.A. and Cancer Society. She and her husband, Jack, have four children.



FISCHER, JOHN M. (Democrat) Representative from 21st District, Snohomish County (part). Serving first term. Born 1923 in Seattle, Washington. Attended Seattle University and University of Washington. B.S. Degree in Pharmacy. Working pharmacist. Chairman Board Olympic View Water District, Precinct committee-man. Member Kiwanis, Elks, Eagles, Moose, Mason's, WSPA, APHA.



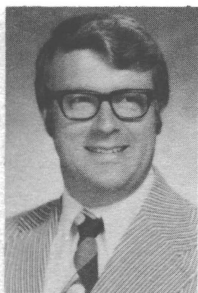
FLANAGAN, SID (Republican) Representative from the 13th District comprising Grant, Kittitas and part of Yakima counties, is serving his eighth term. Born in 1909 in Bellingham. Graduate of the University of Washington, majoring in Public Utilities, he is a farmer and cattleman. Member, St. Pius Xth Catholic Church of Quincy. He and his wife, Vyvien, have three children.

**FORTSON, ELEANOR A. (Democrat)**

Representative from the 10th District north Snohomish County and Island County, is serving her second term. A life-long resident of Washington State. Graduate of W.W.S.C. and Master's Degree in Administration. Member, State and National Grange, Washington Education Assoc., life member, P.T.A., Delta Kappa Gamma, pres. Received Citizen of the Year award 1973, Who's Who in American Politics—3rd Edition, Who's Who in American Women—5th Edition Marquis.



REPRESENTATIVES



FREEMAN, KEMPER, JR. (Republican)

Representative from the 48th District of King County, is serving his second term. Republican Caucus Coordinator. Born in Seattle in 1941, attended the University of Washington and is President of Bellevue Square Managers, Inc. Past President of the Eastside Community Mental Health Center, and a Trustee of First Mutual Savings Bank. A Board member of Youth Eastside Services. A member of the Bellevue Chamber of Commerce and Rotary Club. He and his wife, Betty, have two daughters.

GAINES, ROBERT E. (BOB) (Democrat)

Representative from the 30th District of King County, which encompasses Auburn, Federal Way and Vashon Island. He is serving his second term. Present manager of the Auburn Area Chamber of Commerce, former City Councilman, former Mayor of the City of Auburn. Active in Rotary, past Exalted Ruler of Auburn Elks, and active in other civic and fraternal organizations in the City of Auburn.

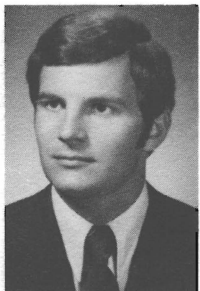


GALLAGHER, P.J. (JIM) (Democrat)

Representative from the 29th District of Pierce County, is serving his eighth term. Born in 1915 in Taylor, Washington. Graduate, Washington State University, he is employed in Public Relations and Sales. Member, Knights of Columbus and Eagles. He and his wife, Mabel, have six children.

GASPARD, MARCUS S. (Democrat)

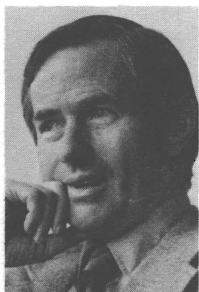
Representative from the 25th District of Pierce and King Counties, is serving his second term. Born in 1948 in Tacoma and reared in Puyallup. Graduate, University of Oregon with B.B.A. in Finance. Former administrative assistant and research analyst to the Senate Commerce and Regulatory Agencies Committee and the Legislative Interim Committee on Banking, Insurance, and Utility Regulation. Has been a part time law student for the past two years. Marc and his wife, Jo Anne, live in Puyallup.



REPRESENTATIVES

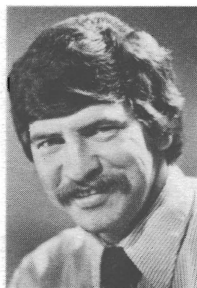
GILLELAND, JAMES E. (Republican)

Representative from the 48th District of King County, is serving his third term. Born in 1918 in Seattle. Graduate, Franklin High School, attended University of Washington. Resident of Bellevue since 1943. Former owner of Gililand Oil Inc. Retired 1972. Past Chairman UGN and Bellevue Quality School Levy Program plus many other youth related programs. He and his wife, Sylvia, have four children.



HALEY, TED (Republican) Representative from the 28th District comprising Lakewood, Steilacoom, Fircrest and University Place, is serving his first term. Born in Tacoma in 1920. Has a B.A. from Amherst College and an M.D. from the University of Rochester. Is a Lieutenant Colonel, retired, from the U.S. Army Medical Corps. In private practice in Lakewood. A widower with four grown children.

HANNA, RON (Democrat) Representative from the 26th District comprising Kitsap and Pierce counties, is serving his first term. Born in 1937 in Tacoma. Attended Pacific Lutheran University (BA) and University of Washington (MSW). He is the Director of the Pierce County District Court Probation Department and Instructor at Pacific Lutheran University. Married to Linda, three children.



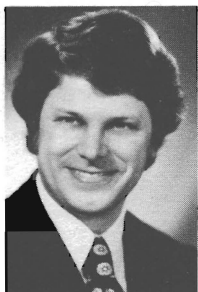
HANSEN, FRANK D. "TUB" (Democrat) Representative from the 13th District comprised of Kittitas, most of Grant, part of Yakima counties, serving his second term. Born in Olema, Washington, in 1913. Past Chairman, Agricultural Stabilization Conservation Service; Past Director, Washington State Cattlemen's Association. Member Grange and Elks. He and his wife, Wanda, have four children. Retired cattle rancher, resident of Grant county since 1917.

REPRESENTATIVES



HANSEY, DON (Republican) Representative from the 40th District comprised of San Juan, Skagit and part of Whatcom counties, appointed to unexpired term in Senate and is serving his third term in the House. Republican Caucus Vice Chairman. Born in 1929 in Everett. Graduate, University of Washington with a B.A. in Business, operates egg production and chick hatchery. Member, Rotary, Chamber of Commerce, Farm Bureau, Cattlemen's Assoc., Oceanographic Commission, Masons, a veteran, Korean conflict. He and his wife, Ginger, have four children.

HAUSSLER, JOE D. (Democrat) Representative from District 7 of Okanogan, part, Ferry, Stevens, Pend Oreille, Lincoln and Spokane, part. Born in Alvin, Texas; education in Washington. Former County Commissioner, a businessman and orchardist. Serving his seventh term. He and his wife, Pearl, have three married children.



HAWKINS, JOHN R. (Democrat) Representative from the 26th District comprising portions of Pierce and Kitsap Counties, is serving his first full term. Born in 1942 in Seattle. Graduated, University of Washington and has a B.A. degree. He is a Land Use Planner for the County of Pierce. Served in the U.S. Marine Corps as an Aerial Navigator. He and his wife, Pat, reside in Tacoma.

HAYNER, JEANNETTE C. (Republican) Representative from the 16th District comprising Franklin, Walla Walla and Columbia (part). Serving her second term, she was born in Portland, Oregon. Received B.A. and J.D. from the University of Oregon. She and her husband, Dutch, have three children.



REPRESENTATIVES

HENDRICKS, JOHN. L. (Republican)

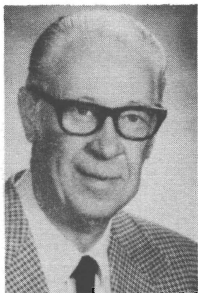
Representative from the 22nd District, Thurston County. Is serving his second term. Graduate Lincoln High School, Tacoma. Bachelor of Science Degree, University of Washington. Former Member and President of Olympia School District Board of Directors, Past President, Southwest Washington Pharmaceutical Association, Past President and Member of Olympia Kiwanis Club, and veteran of World War II. Owner-operator of Hendricks Rexall Drugs.



HURLEY, GEORGE S. (Democrat) Representative from the 44th District, Northwest Seattle area, part City of Seattle, part county N. W. to county line. Former representative from the old 37th District. Born, raised and educated in Seattle. Attended the University of Washington.

HURLEY, MARGARET (Democrat)

Representative from the 3rd District of Spokane County, is serving her twelfth term. Graduate, Holy Names College with Bachelor of Arts in Education. Member, Citizens Against Residential Freeways, National Order of Women Legislators, and Advisory Board of Good Shepherd Home. She has four children.



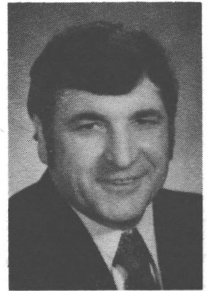
JASTAD, ELMER (Democrat) Representative from the 20th District, comprised of Lewis, Wahkiakum and parts of Cowlitz, Pacific and Thurston counties. He is serving his sixth term. Born in Chehalis. Graduated from the School of Pharmacy, Washington State University and is a Pharmacist (self-employed). Mayor of Morton. Member, Masons, and Elks. He and his wife, Edna Mae, have a son.

REPRESENTATIVES

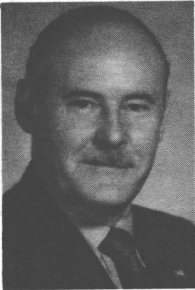


JUELING, HELMUT L. (Republican)

Representative from the 28th District of Pierce County, is serving his eighth term. Born in 1913 in Loup City, Nebraska. Graduate, University of Puget Sound with a B.A. degree, is the president of a laundry and linen supply firm. He and his wife, Jayne, reside in Fircrest.



KALICH, HUGH (Democrat) Representative from the 20th District comprising Lewis, Wahkiakum, Cowlitz, and part of Pacific and Thurston counties, is now serving his fifth term. He and his wife, Mildred, have two sons.

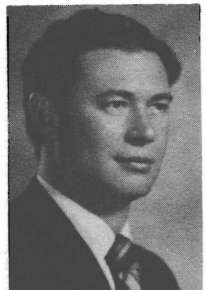


KILBURY, CHARLES D. (Democrat)

Representative from District 16 (Walla Walla, Franklin, Columbia, part), is serving his third term. Born in Yakima, is a railroad switchman, and an insurance broker. He and his wife, Florence, have three children and one grandson.

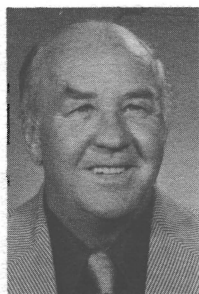
KING, RICHARD (DICK) (Democrat)

Representative from the 38th District of Snohomish County, is serving his sixth term. Born in 1934 in Ritzville. Graduate, University of Washington with B.A. and M.A. degrees, is a teacher at Everett Community College. He and his wife, Mary Evelyn, have four children.



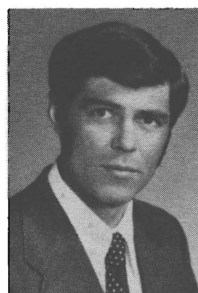
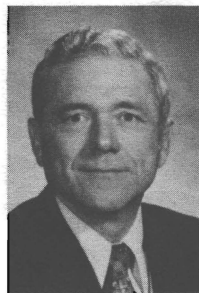
REPRESENTATIVES

KNOWLES, WALT (Democrat) Representative from the 4th District comprising Spokane and Whitman counties. Serving his third term. Born and educated in Spokane, is a graduate of Eastern Washington College and Gonzaga University, attended University of Washington. He is a veteran of World War II and Korea, a practicing attorney in Spokane, and former state president of Moose. Currently chairman of House Judiciary Committee. He and his wife, Betty, have three children.



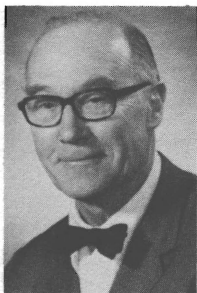
KRAABEL, PAUL (Republican) Representative from the 46th District of King County, is serving his third term. Assistant Republican Whip. Born in 1933 in Seattle. Graduate, University of Washington with B.A. in Economics and M.S. in Electrical Engineering, is an electronics engineer. Member, Seattle-King County Municipal League, Washington Environmental Council, Metro Transit Advisory Board. He and his wife, Marino, have four children.

KUEHNLE (KEENLY), JAMES P. (Republican) Represents the 4th District comprising southeastern Spokane County and northeastern Whitman County. Born in Dubuque, Iowa; Palo Alto high school grad.; Oregon State Univ. grad. Jim is serving his fourth term. He is a realtor and commercial land developer with 20 years business background. Member Kiwanis, Chamber of Commerce, Elks, Masonic Lodge, he and his wife, Georgia, have two married daughters.



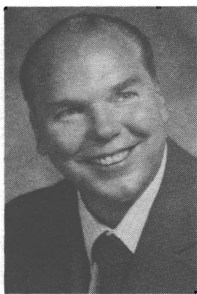
LAUGHLIN, E. L. "GENE" (Democrat) Representative from the 17th District of Clark (part), Skamania and Klickitat counties, is serving his second term in the House. Born in Peoria, Illinois in 1938. Graduate of Western Washington State College with B.A. Ed. in History and B.A. in Political Science. Social Science teacher at Camas High School and Vestryman at St. Luke's Episcopal Church, Vancouver. Served in the U.S. Navy, and is a member of Washington Education Association and Grange. He and his wife, Candy, have three children.

REPRESENTATIVES



LECKENBY, WILLIAM S. "BILL" (Republican) Representative, 34th District, West Seattle, King County. Birthplace, Seattle, 1910. Wife is former Josephine Garofalo. They have two sons and one daughter, all adult. Founder and Board Chairman of the Leckenby Company. Now serving his fourth term in the House of Representatives.

LEE, ELEANOR (Republican) Representative from the 33rd District. Attended Washington State University and graduated from The Evergreen State College in political science. Business manager and director of a manufacturer's representative firm. Former State Land Planning Commissioner and League of Women Voters official. Member of King County Policy Development Commission and Sea-Tac Communities Plan Policy Advisory Board; trustee Puget Sound Youth Foundation and 4H Club leader. She and her husband, David, have three daughters.



LUDERS, EDWARD (Democrat) Representative from District 5 of Spokane County, is serving his third term. Born in 1928 in Spokane. Graduate, Eastern Washington State College, is curriculum director of I.S.D. No. 101. Member, Spokane County Sportsmen's Association, member Inland Empire Big Game Council. He and his wife, Winifred, have four children.

LYSEN, KING (Democrat) Representative from the 31st District of King County, is serving his third term. Born in 1942 in Minneapolis. Graduate, Seattle University with degree in Education and Political Science, a former high school teacher and counselor. Partner in a small farm commodities and real estate business. He and his wife, Tony, have three children.

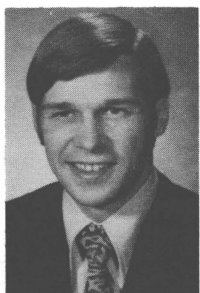


REPRESENTATIVES

MARTINIS, JOHN (Democrat) Representative from the 38th District of Snohomish County, is serving his fourth term. Born in 1930 in Everett. He is a retail merchant.



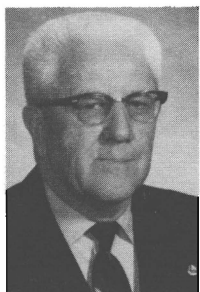
MATTHEWS, GARY LEE (Republican) Representative from the 45th legislative district of King County is serving his second term. Born in Seattle in 1943, he is a lifelong resident of north King County and a graduate of Seattle Pacific College. He is a financial consultant and broker, also a Licensed Health Administrator. Married to Linda, 2 children, Theresa and Jennifer.



MAXIE, PEGGY JOAN (Democrat) Representative from the 37th District of King County, is serving her third term. Born in 1936 in Amarillo, Texas. Graduate, Seattle University with B.A. in Psychology, University of Washington with Master's degree in Social Work. Consultant/Executive Director for Central Area Council on Alcoholism.



MAY, WILLIAM J. S. "BILL" (Democrat) Representative from the 3rd District of Spokane County, his serving his eighth term. Graduated from high school and has taken special courses in Advertising and Electronics. Recently retired. Active in Civic affairs and now serving on Spokane Transit Commission. He and his wife, Pearl, have three children.

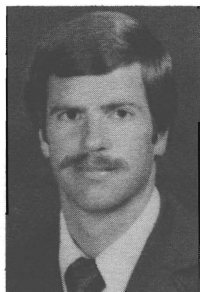


REPRESENTATIVES



McCORMICK, GERALDINE (Democrat) Representative from District 5 of Spokane County, is serving her fourth term. Born in Spokane. Attended Whitworth College, and is a homemaker. Member, Eagles Lodge, Triangle Grange, and VFW Auxiliary. She has two daughters and one granddaughter.

McKIBBIN, JOHN (Democrat) Newly elected Representative from the 49th District encompassing Vancouver and most of Clark county, is serving his first term. Born in San Diego, Calif. He is a graduate of Central Washington State and Lewis and Clark Colleges. He is a teacher of Contemporary World Problems at the high school level. He and his wife, Nancy, have been married six years.



MOON, CHARLES (Democrat) Representative from the 39th District, parts of Snohomish and King counties, is serving his seventh term. Born in 1923 in Sheridan, Wyoming. Graduate, Washington State University with B.S. and D.V.M. degrees, is a Veterinarian. Served in the United States Army. He and his wife, Ellen, have three sons.

MOREAU, ART (Democrat) Representative from the 42nd District comprising Whatcom County (part), is serving his first term. Born in 1936 in Bellingham, Washington. Attended W.W.S.C., S.V.C., and W.S.U. He is a Pulp Bleaching Operator for Georgia-Pacific Corporation. Served in the U.S.A.F. He and his wife, Janet, have two daughters, Suzanne and Kimberlee.



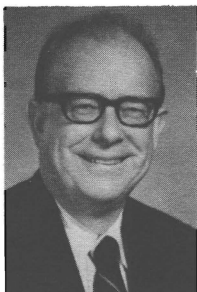
REPRESENTATIVES

NELSON, GARY A. (Republican) Representative from the 21st District of Snohomish County (part) is serving his second term. Born in Spokane, received B.S. in Electrical Engineering from W.S.U. and M.S. from U of Wisconsin. Served 3 years in Air Force as a communications officer. Manager of Special Services with a telephone company. Past Edmonds City Councilman and planning commission member. Received Edmonds Distinguished Service Award. His wife, JoAnne, is an education consultant and author. They have three sons.



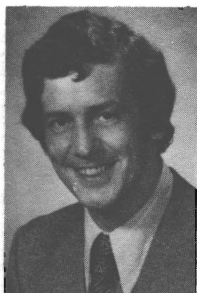
NEWHOUSE, IRVING (Republican) Representative from District 15 of Yakima County, is serving his sixth term. Republican Leader. Native of the Yakima Valley, graduate of Washington State University with B.S. in Agriculture, operates an irrigated, diversified ranch. He and his wife, Ruth, have six children.

NORTH, FRANCES C. (Democrat) Representative from the 47th District of King County, is serving her second term. Native to the Renton area, she attended Seattle University. A North Bend Councilwoman for 7 years, she has been active in the Si View Park Board, Nelems Hospital Auxiliary, Babe Zaharias Cancer Chapter, National Secretaries Association, Business & Professional Women, Puget Sound Governmental Conference, and Citizens for Transit. She and her husband, James M. North, have lived in the Snoqualmie Valley for 27 years.



O'BRIEN, JOHN L. (Democrat) Representative from the 35th District of King County, is serving his seventeenth term. Speaker of the House from 1955-1962, Majority Leader in 1965, and Minority Leader 1967-71 and Speaker Pro Tempore 1973-75. Graduate of business college, attended Western Institution of Professional Accounting, and is a CPA. Past President and member Exec. Committee of National Conference of State Legislative Leaders. Member, Eagles, Knights of Columbus, Washington Athletic Club, and Rainier Chamber of Commerce. He and his wife, Mary, have six children.

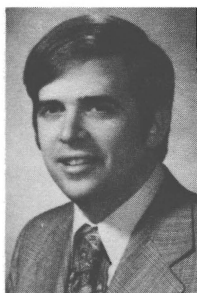
REPRESENTATIVES



PARDINI, A. J. (BUD) (Republican)

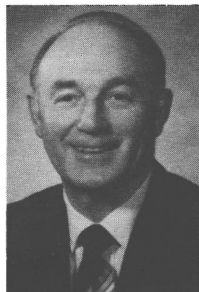
Representative from the 6th District, Spokane County, is serving his fourth term. Is a bank loan officer. Active in numerous civic, educational and political activities. Serving on Revenue, Financial Institutions, Commerce Committees. Also serving as Republican Whip. He and his wife, Donna, have 3 daughters.

PARIS, WILLIAM N. (Republican) Representative from the 18th District comprising Cowlitz and northwest Clark Counties, is serving his third term. Born in 1927 in Bartlesville, Oklahoma, he has served as the Senior Minister of Calvary Community Church in Longview for 16 years. Paris has been appointed to several Boards and Committees both on the local and state level. He and his wife, Naomi, have three daughters.



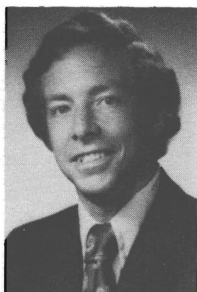
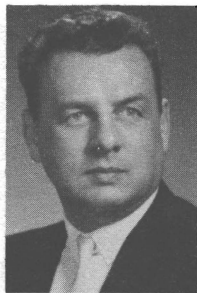
PARKER, MIKE (Democrat) Representative from the 29th District of Pierce County, is serving his second term. Born in 1947 in Renton, Washington. Attended Highline College and the University of Puget Sound. Is a Coordinator of Health and Welfare Programs for Riker Laboratories and a member of the Washington State National Guard. He and his wife, Judy, were married in 1968. Member of Elks, Toastmasters, JC's, 29th District Democratic Club, Bellarmine Boosters and Kiwanis.

PATTERSON, E. G. "PAT" (Republican) Representative from the Ninth District, serving his second term. A native of Pullman, Washington, Army officer veteran of WW II. Graduate of Washington State University, B.A. Political Science 1946. Served as State Adjutant Quartermaster, VFW, and for 20 years, Director of WSU's Alumni Relations, Scholarship and Development Fund, Graduate Records, and Legislative Consultant. Member, Pullman Chamber of Commerce and VFW. He and his wife, Maxine, have seven children.



REPRESENTATIVES

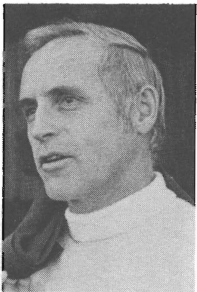
PERRY, ROBERT A. (Democrat) Representative from the 32nd District of King County, is serving his ninth term. Born in 1921 in New York. He is a graduate of USMS School of Engineering. Served as an officer in the Merchant Marine during World War II and Korean conflict.



PETERSON, WARREN E. (Republican)

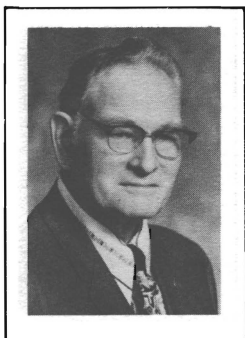
Representative from the 43rd District of King County, is serving his first term. Born in 1940 in Nashville, Tennessee. B.S. Economics degree from the Wharton School, University of Pennsylvania and attended University of Washington Graduate School. Former Naval officer, Vietnam veteran. Financial Systems Supervisor with the Boeing Company. Member Seattle/King County American Revolution Bicentennial Commission, Montlake Community Club, Municipal League.

POLK, WILLIAM M. (Republican) Representative from the 41st District in King County is serving his third term. Republican Organization Leader. Born in 1935 in Cleburne, Texas, raised in Haddonfield, New Jersey, graduate of Cornell University with a Bachelor of Architecture. He is a principal in the architectural firm Waldron and Pomeroy, member of the Washington State Arts Commission, American Institute of Architects, College Club, Director of Metropolitan Board YMCA and is Director of Cornish School for Allied Arts. He, his wife, Karla, and three children, Lucy, Beth and Andy, live on Mercer Island.



RANDALL, DR. ROBERT W. (Democrat) Representative from the 23rd District, Kitsap County, he is serving his fourth consecutive term in the House. Raised in the Chicago area, attended the University of Washington and Illinois College of Optometry. He is in private optometric practice in Bremerton. Fighter pilot during WWII. He has been the chairman of the Bremerton School Board, member of Chamber of Commerce, Kiwanis Club, president of the Community Concert Assoc. and Chairman of the Kitsap County March of Dimes.

REPRESENTATIVES

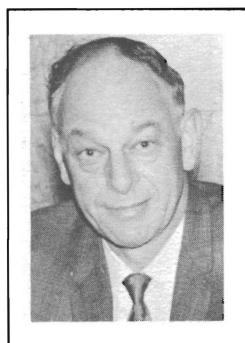
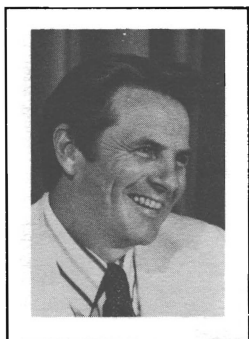


SAVAGE, CHARLES R. (Democrat)

Representative from the 24th District comprising Clallam, Jefferson, Mason and part of Thurston counties. Elected first in 1938, now serving thirteenth term. Chairman of Democratic caucus for eight years, Secretary for two years. Has served as chairman of the following standing committees: Labor & Industrial Insurance, Election & Redistricting, Public Utilities, Education, Parks, Appropriations subcommittees on Education, Health and Institutions. Interim Committees: Advisory Council on Public Higher Education.

SAWYER, LEONARD A. (Democrat)

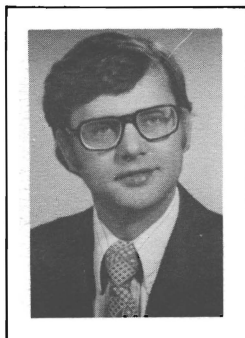
Representative from the 25th District of Pierce County since 1954, serving his second session as Speaker of the House. Born in Puyallup in 1925, he is a graduate of the University of Puget Sound and the University of Washington Law School. Served in the U.S. Navy during WW II, was a former prosecuting attorney and is currently practicing law in Puyallup.



SCHUMAKER, WILLIAM "BILL" (Republican)

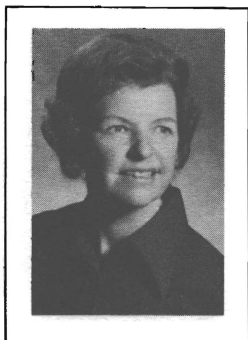
Representative, 7th District. Serving fourth term. Born 1915 in Colville. Spent first 20 years on farm; 15 years newspaper business; department editor of two outdoor-gun magazines; free lance photo-journalist. He and wife, June, own and operate a gunsmithing-sporting goods business in Colville. Member, American Legion, Stevens County Sportsmen's Assn., Shooters Club of America, Natl. Rifle Assn. Natl. Assn. to Keep & Bear Arms; N.E. Wash. Game Management Assn.

SEEBERGER, ED (Democrat) Representative from the 14th District in Yakima County. Born in 1937, Ed has lived most of his life in Yakima, graduating from Yakima CC in 1957. He has a B.A. in Political Science and an M.A. in American History from Seattle University, and a J.D. degree from the University of Oregon. A Yakima lawyer, Ed and his wife, Joan, have two sons.

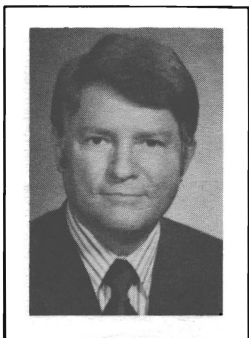


REPRESENTATIVES

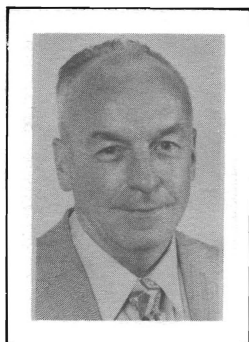
SHERMAN, MARION KYLE, (Democrat) Representative from the 47th district is serving her first term. Board member of the Washington Committee on Consumer Interests, Vice President Maple Valley Chamber of Commerce, on National Panel of Consumer Arbitrators for Better Business Bureau, member, Task Force for Citizen Participation of River Basin Coordinating Committee, Citizens' Advisory Committee on Highway Safety. University of Washington graduates, she and husband, Leonard, have two college students.



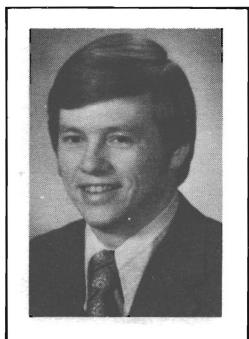
SHINPOCH, ALBERT N. "BUD" (Democrat) Representative from the 11th District, comprising downtown Renton and Kent, King County, is serving his third term. Born in Council Hill, Oklahoma. Past President Renton Association for Handicapped Children. Active: Greater Renton Community Chest, member, Greater Kent Chamber of Commerce, member of Region IV Department of Social and Health Services Advisory Committee. Manager, the Boeing Company. Bud and his wife, Barbara, have two daughters.



SMITH, DR. EDWARD P. "EDDIE" (Democrat) Representative from the 19th District, Grays Harbor County and part of Pacific County. Born and raised in Hoquiam. Attended Grays Harbor College, Central Washington State College, Notre Dame University and holds a doctorate from Washington State University. Served as President of Grays Harbor College for 19 years and is associated with Crawford-Baird-Smith, Corp., an education consulting agency. Served in the Navy for five years. He and his wife, Barbara, have two daughters and one son.



SMITH, RICK (Democrat) Representative from the 23rd District of Kitsap County is serving his second term. Born in 1942 in Portland, Oregon. A Silverdale attorney, served four years as Legislative Assistant to Congressman Floyd V. Hicks. Attended Olympic Community College in Bremerton and graduated from the University of Washington with a B.A. in political science. He attended the Amer. Univer. in Wash. D.C. He and his wife, Janice, and their daughter, Heather, live in Silverdale.

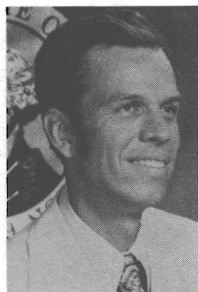
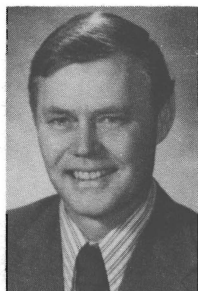


REPRESENTATIVES



SOMMERS, HELEN (Democrat) Representative from the 36th District in Seattle, serving her second term. Born in New Jersey. Attended the University of Washington and earned B.A. and M.A. degrees in Economics. Employed by the King County Council. Member, League of Women Voters and National Organization for Women.

THOMPSON, ALAN (Democrat) Representative from the 18th District comprising Cowlitz and Clark counties, is serving his sixth term. Assistant Majority Floor Leader. Born in 1927 in Geneva, Iowa. Served in the Navy. Attended University of Nebraska and University of California, Berkeley, and has a B.A. degree. He is the Publisher of two weekly newspapers: the *Cowlitz County Advocate* and the *Lewis County News*. He and his wife, Barbara, have four sons.



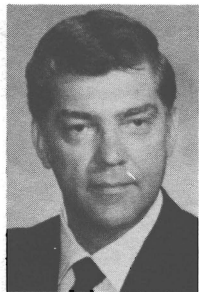
TILLY, EARL F. (Republican) Representative from the 12th District, is serving his second term. He is 40 years old and a Wenatchee businessman. President of Tilly Equipment, Inc., a farm and orchard equipment dealer serving North Central Washington. A graduate of the University of Washington in Business Administration, member of the Wenatchee Rotary Club, The Wenatchee Valley College Foundation, and Wenatchee Grace Lutheran Church. He and his wife, Barbara, have three children, Kristen, Bart and Shannon.

VALLE, GEORGETTE (Democrat) Returning to serve the 31st Legislative District of King County, having previously served in the 1965-67 session. Born in Blue Earth, Minnesota. Graduate of University of Minnesota with a B.S. degree in Occupational Therapy. Currently serving her third term in the legislature. She and her husband, Odd, a dentist, have two children, Peter and Christine.

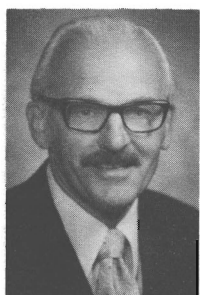


REPRESENTATIVES

WARNKE, FRANK J. (Democrat) Representative from the 30th District, South King County. Served in the 1965-67 and 1973-75 sessions. Born in Havre, Montana in 1933. Studied Political Science at Central Washington State College and the University of Washington. Employed as Executive Director of the Public School Employees of Washington. Married and has two children.



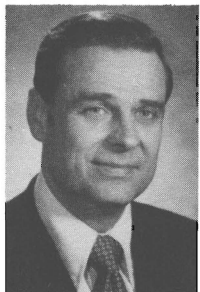
WHITESIDE, JIM (Republican) from the Fourteenth District of Yakima. Native of Washington State, born in Tacoma, raised in Seattle, represents Yakima County. Attended U. of W. and obtained B.A. degree from W.S.U. after Naval Service. He has operated a cleaning business in Yakima for 20 years. He and his wife, Shirley, have 5 children.



WILLIAMS, ALVIN C. (Democrat) Representative from District 32 of King County, is serving his fourth term. Born in 1930 in North Dakota. He served with U.S. Marine Corps and is a graduate, University of Washington, School of Architecture and Urban Planning, is an architect. Member of the Seattle Design Commission, Past Chairman, Lake Union Advisory Commission and Past President of the Wallingford Community Council.



WILSON, SIMEON R. "SIM" (Republican) Representative from the 10th District of northwest Snohomish County and Island County, elected in 1972 to his first term, re-elected, 1974. Born in Hood River, Oregon, in 1927. Attended Everett Community College, B.A., Washington State University, M.F.A., University of Washington. Served in the U.S. Navy 1945-46, 1951-54. Publisher of the *Marysville Globe*. He and his wife, Betty, have two children.



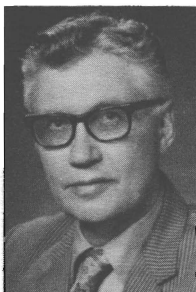
REPRESENTATIVES



WOJAHN, LORRAINE (Democrat) Representative from the 27th District of Pierce County, is serving her fourth term. Born in Tacoma. Educated in Seattle schools and the University of Washington. Former consumer specialist for Washington State Labor Council. Member, Washington State Women's Council; Region V Advisory Council, State Dept. of Social & Health Services; Consumer Credit Counseling Services, Inc. of Seattle and Tacoma; Washington State Judicial Council. She and her husband, Gilbert, have one son.

ZIMMERMAN, HAROLD S. (HAL)

(Republican) Representative from the 17th District (Klickitat, Skamania, and part of Clark counties) is serving his fifth term. Born in 1923 in Valley City, North Dakota. Graduate, University of Washington with a B.A. degree, is Editor-Publisher of *Post Publications*, Camas. Served in the Air Force in World War II. Past President, Washington Newspaper Publishers Association. Member, Sigma Chi, United Methodist Church, Kiwanis, Grange, Young Life Council, Youth Out-reach Board, Regional Social & Health Services Board. He and his wife, Judy, have three children, Karen, Steve and Julie.

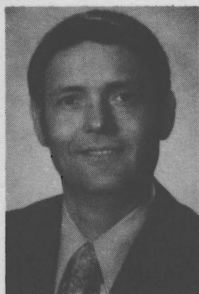




FOSTER, DEAN R. (Democrat) Chief Clerk of the House of Representatives serving his second term. Worked as an employee in the Senate from 1959-1965 and in the House in 1972. Born in 1941 in Yakima. Attended Western Washington State College and graduated from University of Washington with a degree in Political Science. Served in the United States Air Force as an Intelligence Officer. He and his wife, Cynthia, have three sons.

WILSON, DONALD R. (Democrat)

Served six sessions as Assistant Secretary of the Senate, and is serving his third term as Assistant Chief Clerk of the House from the 22nd District of Thurston County. Born in 1922 in Aberdeen. Attended, University of Mississippi, is an engineer for the Burlington Northern Railway. President, Glenwood Park Community Club; former mediator National Mediation Board. He and his wife, Sheryl, have four children.



YOUNG, ROSS (Democrat) Sergeant at Arms of the House of Representatives serving his first term. Worked as an employee in the Senate 1971-1972 and in the House 1973-1974. Born in 1929 in Cle Elum. Attended Central Washington State College. Served 20 years in the United States Air Force, retiring as a Senior Master Sergeant in 1969. He and his wife, Mary, have five of their seven children living with them in Olympia.