



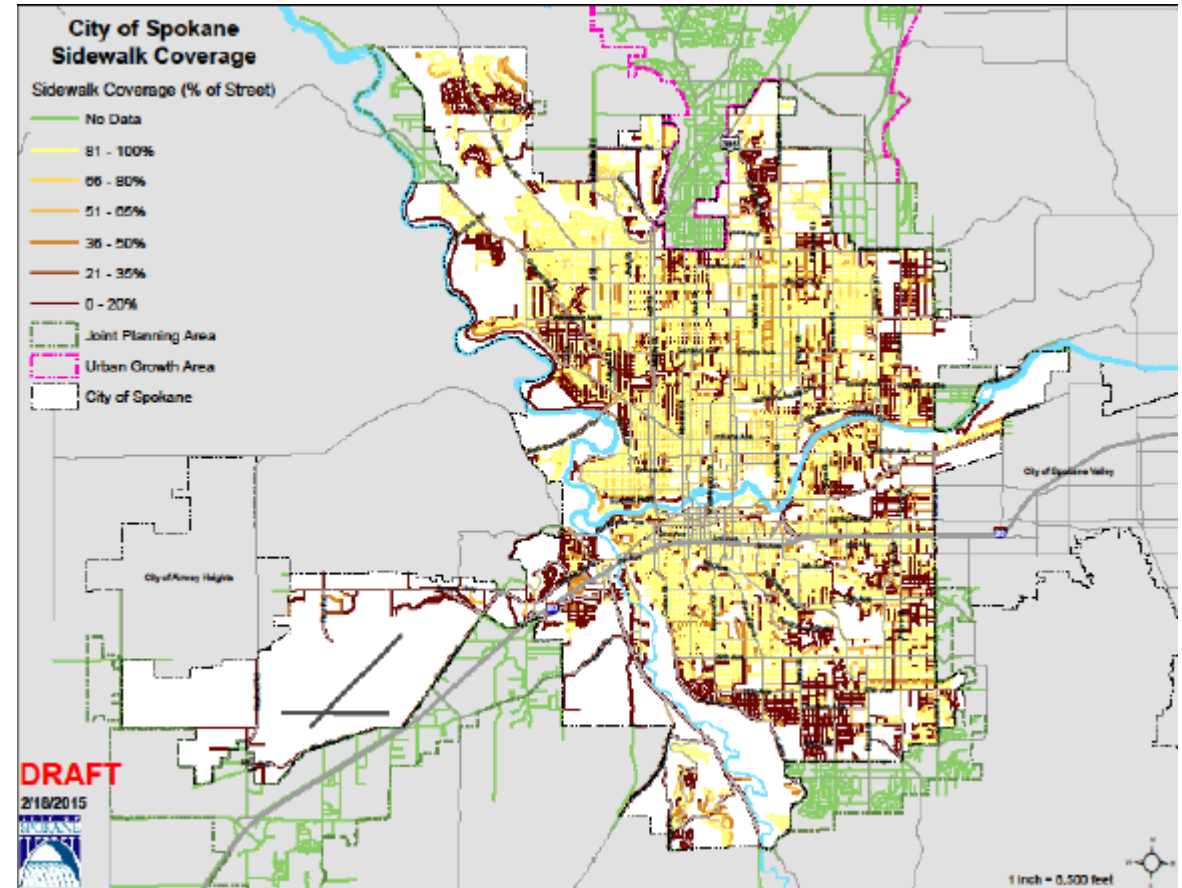
City of Spokane Multi-Modal Transportation Presentation

**Candace Mumm,
Spokane City Council Member &
Spokane Transit Authority Chair**

**Joint Transportation Committee
June 26, 2019**

Spokane's School focused Sidewalks

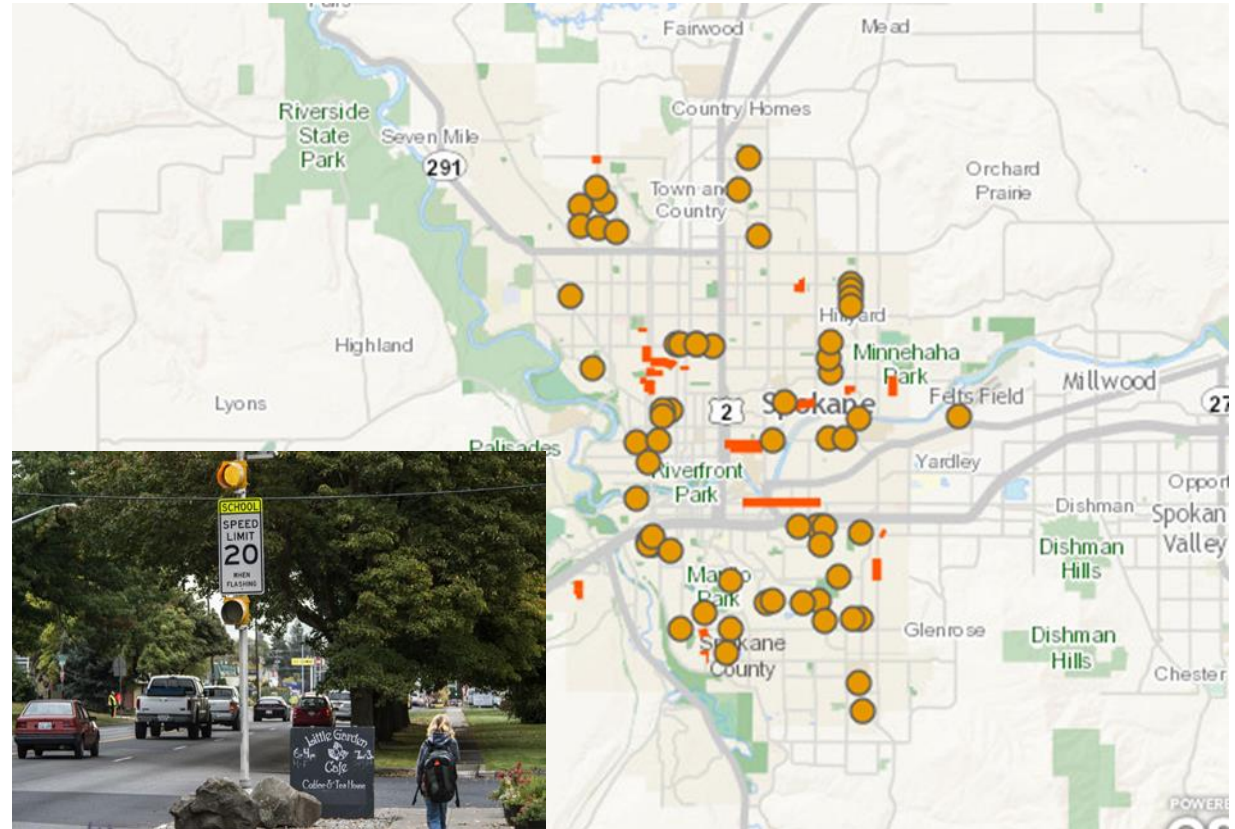
- Spokane has identified all of its missing sidewalks in the Pedestrian Plan.
- City of Spokane has assessed one-third of the NW District's sidewalks for improving connectivity and walkability.
- 6 SPS elementary schools are without buses.
- Studies show that children who walk to school learn better.
- Walking school bus has 2,883 students signed up to date and have walked a distance of 107 miles every day.



Walkability

School Radar

- City of Spokane has deployed red-light cameras to reduce collision, injuries and fatalities at intersections.
- The objective is to change driver behavior, making the community safer.
- All revenue after program expenses goes back into traffic calming/safety improvement projects in each impacted neighborhood.
- Millions in revenue received to date, funded projects worth \$1.3M in 2018 and \$1.6M in 2019.



Pedestrian/Bicycle Projects:

University District Gateway Bridge

- Iconic landmark for City that serves both pedestrians and bicyclists.
- Crosses over railroad viaduct, connecting north and south parts of the University District.



Riverfront Park Suspension Bridges

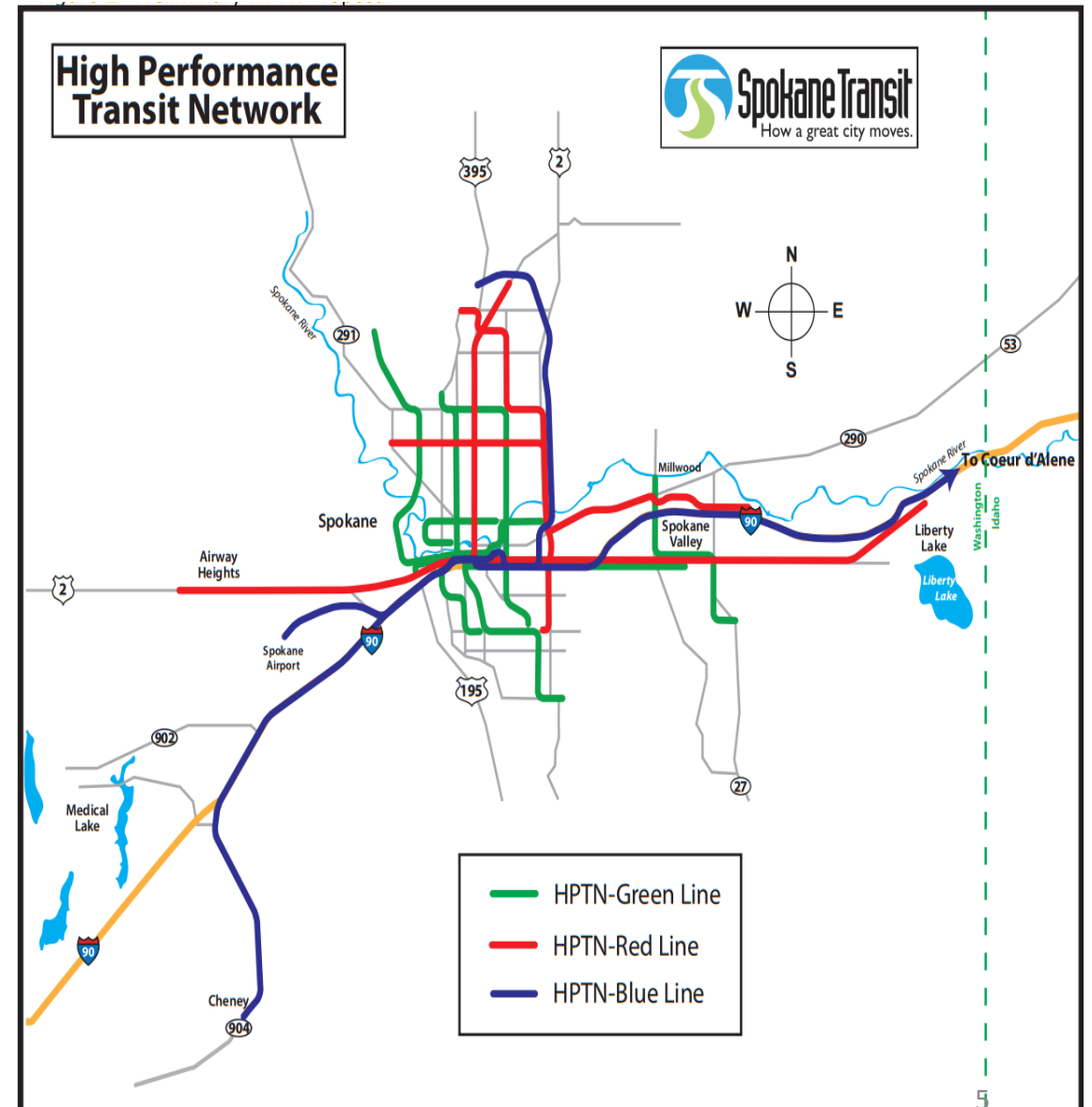
- Originally constructed as part of Expo '74.
- North Bridge closed after concrete corroded and rebar exposed.
- ALEA Grant and Tax Increment funding were originally requested, but now due to hazardous condition emergency funds have been requested.
- One of few North-South accesses through park for pedestrians.



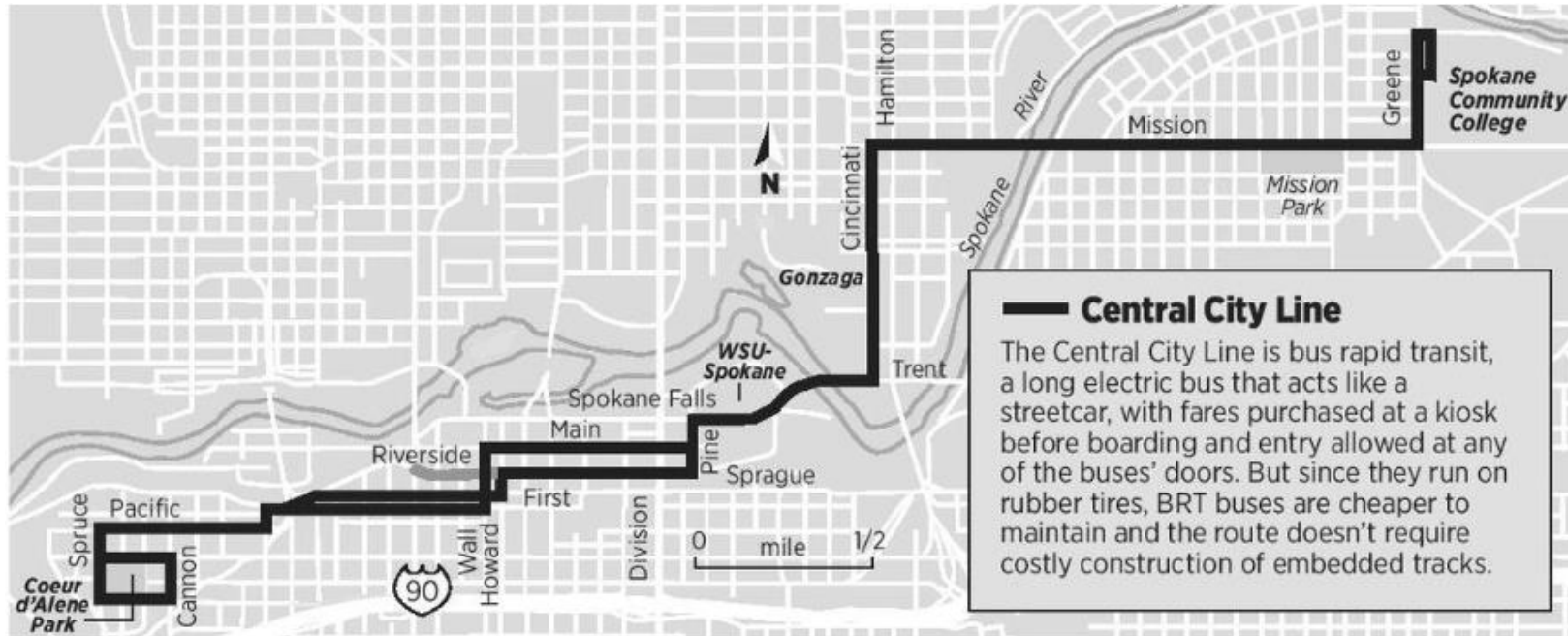
Transit Projects:

Monroe-Regal High Performance Transit (HPT) Corridor

- Will run from Five Mile P&R to Moran Prairie P&R.
- Highest pedestrian-vehicle crashes.
- HPT stations will offer more frequent service, real-time signage.



Transit Projects:



Central City Line

- A 6-mile Bus Rapid Transit all-electric corridor being constructed between Browne's Addition and Spokane Community College (SCC).
- SCC Transit Center expected to open this fall.
- Construction on Central City Line expected to begin in 2020.

Road Projects:

Sprague Avenue Rebuild

- Top STA route with highest cash utilization.
- Sprague Ave. is a major truck and transit route that has been re-aligned through a business district.
- Water pipes dating to 1894 are in service underneath Sprague Ave.
- Intersection has been updated to ADA standards, stormwater improvements and High Performance Transit shelters have been installed.
- Existing businesses are seeing higher sales.
- New businesses are moving and illicit business is declining.



Road Projects:

Post Street Bridge

- Recently closed to vehicular traffic following structural analysis.
- Rising costs have forced the city to postpone construction of a replacement Post Street Bridge.



Highway Projects:



North Spokane Corridor

- Originally conceived in 1940's, NSC will maximize throughput by allowing motorists and freight to avoid city arterials.
- North Half of NSC was fully complete in 2012.
- Connecting Washington package (2015) provided full funding to needed to complete NSC.
- South Half of NSC is scheduled to be complete in 2029.