

A PICTORIAL GUIDE
TO THE
**WASHINGTON
STATE
LEGISLATURE**



1 ♦ 9 ♦ 8 ♦ 3

FORTY-EIGHTH LEGISLATURE



John Spellman Governor

John Dennis Spellman, the 18th Governor of Washington State, was born in Seattle December 29, 1926, and has been a life-long resident of King County.

He attended grade and high school in Seattle and graduated from Seattle University as class Valedictorian in 1949 with a BSS in political science and history. He also graduated from Georgetown University Law School, Washington, D.C., with a JD degree in 1953. He was admitted to the Washington State Bar in 1954.

He then practiced law in Seattle for 13 years before assuming public office. He first served as King County Commissioner—1967 to 1969.

Mr. Spellman was elected as the first King County Executive in 1969 under a voter-approved home rule charter. He was reelected in 1973 and again in 1977. Until his election as Governor, he is the only Executive that King County has had.

Mr. Spellman has been active in the National Association of Counties, most recently serving as First Vice President. He also has been active in several NACO special committees and was chairman of the National Agricultural Lands Project Advisory Committee. Among the other committees on which he served were Crime and Public Safety, Land Use and Growth Management, and aging programs.

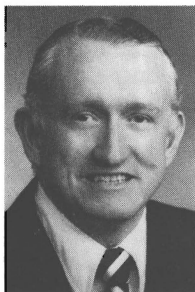
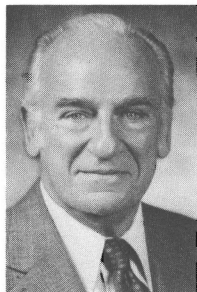
In addition to his elected offices, he has served many public and civic groups. He is past President of the Puget Sound Council of Governments, served as Chairman of the King-Snohomish Manpower Consortium and is a past Vice Chairman of the U.S. Coastal Zone Management Advisory Committee.

He also is a past Chairman of the Seattle Civil Service Commission and the King County Library Board.

He is a Navy veteran of World War II and served in the Pacific theatre. His family includes his wife, Lois, and their six children.

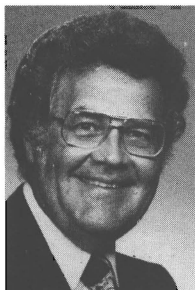
ELECTED OFFICIALS

JOHN A. CHERBERG, Lieutenant Governor Democrat. Presently serving his seventh term as President of the Senate, Ex-officio Chairman of Senate Rules Committee, member of State Finance Committee, Capitol Committee, Washington State Patrol Retirement Board, Health Care Facilities Authority, Business License Center Board of Review, Mother Joseph Foundation, State Oil & Gas Conservation Committee, Washington State Patrol Memorial Foundation, Chairman of the Washington State Data Processing Authority and the Joint Legislative Committee on International Business & Tourism. Formerly television executive, head football coach U of W and Seattle high school teacher and coach.



RALPH MUNRO, Secretary of State Republican. Serving his first term. Native of Washington, a lifelong resident of Bainbridge Island where he lives with his wife and son. Active member of the Betheny Lutheran Church. Graduate of WWU. Served as Governor Dan Evans Special Assistant, was Washington State's first Volunteer Coordinator. Active in many community groups, environmental & historic preservation. Director of Guardianship, Foundation for the Handicapped. Founder of several organizations for the disabled. Small businessman, owns & operates a tree farm in the Olympia area where he is a member of the Olympia Highlanders Bagpipe Band.

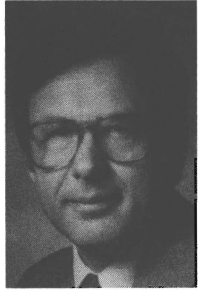
ROBERT S. O'BRIEN, State Treasurer Democrat. Born, raised and educated in the State of Washington. Elected to nine consecutive four-year terms as a public funds treasurer. Elected Grant County Treasurer four times and elected State Treasurer five times. Chairman, State Finance Committee; Chairman, Washington Public Deposit Protection Commission; Chairman, State Investment Board 1981; past President Washington State Association of Elected County Officials; past President Western State Treasurers Conference; past President National Association of State Auditors, Comptrollers and Treasurers.



ROBERT V. (BOB) GRAHAM, State Auditor Democrat. Is a native Washingtonian and became the State's seventh auditor in 1965, and has been elected to a fifth term. Prior to his election he served in every administrative post in the Office of State Auditor. He is a Certified Internal Auditor, and active member of many professional organizations. He and his wife, LLOYDINE, have five children.

ELECTED OFFICIALS

KEN EIKENBERRY, Attorney General
Republican. Member, President's Task Force on Victims of Crime; Corrections Standards Board; Criminal Justice Training Commission. Vice Chairman, Conference of Western Attorneys General. Former Special Agent of the F.B.I., Deputy Prosecutor for King County and three-term state legislator; Republican Party State Chairman from 1977 to 1980. Graduate of WSU and U of W. Ken and his wife, Beverly, reside in Olympia.



DR. FRANK B. BROUILLET,
Superintendent of Public Instruction
Non-partisan Office. Elected to Office of State Superintendent in 1972. Former member of the House of Representatives, serving eight consecutive terms. A native of Puyallup, where he resides with his wife, Marge. He has two grown sons, Marc and Blair.

BRIAN J. BOYLE,
Commissioner of Public Lands
Republican. Serving his first term. Administers the Department of Natural Resources, the State's management agency for forest, agricultural, range, tidal, and shorelands. Chairman of Board of Natural Resources, Forest Practices Board, and Harbor Lines Commission. Formerly Chairman of the Board, Cowlitz County Commissioners. Worked as supervisor and engineer in the metals industry, and earlier employed as hard rock miner. MBA, University of Portland, B.S., Montana School of Mines. A Washington resident for 15 years.



RICHARD G. (DICK) MARQUARDT,
Insurance Commissioner
Republican. Raised in Western Washington, former Washington State Senator. Executive in private enterprise and public life.

TABLE OF CONTENTS

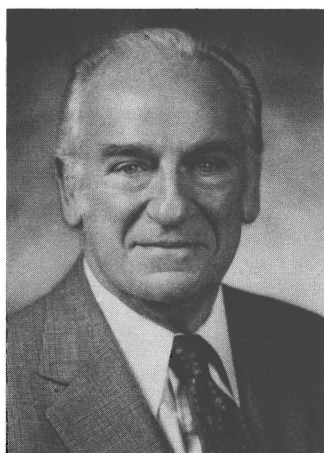
State Elected Officials	2
Introduction	4
President of the Senate	5
Senate Roster	6
Senate Biographies	7
Speaker of the House	21
House of Representatives Roster	22
House of Representatives Biographies	24

INTRODUCTION

This "48th Session Pictorial Directory of the Washington State Legislature" contains pictures of and biographical material on state elected officials and members of the Senate and House of Representatives. This Directory is prepared by the Senate and the House of Representatives to assist those interested in becoming better acquainted with their legislators and the legislative processes in our state.

These are the men and women who have been elected to serve the people both as the heads of our government and as our voice in providing our state with laws which benefit all.

SENATORS OF THE STATE OF WASHINGTON



JOHN A. CHERBERG
Lieutenant Governor
President of the Senate

John Andrew Cherberg (Democrat) is serving his seventh term as President of the Senate and Ex-officio Chairman of the Senate Rules Committee. He was first elected Lieutenant Governor in 1956, and re-elected in 1960, 1964, 1968, 1972, 1976, and 1980. Born in 1910 in Pensacola, Florida, he earned a life teaching diploma from the University of Washington in 1934. Formerly a teacher, he was head football coach at the University of Washington prior to his election. He and his wife, Betty, have three children.

ROSTER OF MEMBERS

WASHINGTON STATE SENATE 49 Members—
26 Democrats, 23 Republicans

NAME	POL.	DIST.	MAILING ADDRESS
CHERBERG, John A. (D)	Pres. of Sen.		304 Legislative Building, Olympia, 98504
BARR, Scott	R	7	Route 1, Box 130, Edwall, 99008
BAUER, Albert	D	49	13611 N.E. 20th Avenue, Vancouver, 98665
BENDER, Rick S.	D	44	2019—181st S.E., Bothell, 98011
BENITZ, Max E.	R	8	Route 2, Box 2521, Prosser, 99350
BLUECHEL, Alan	R	45	9901 N.E. 124th Street, #505, Kirkland, 98033
BOTTIGER, R. Ted	D	2	8849 Pacific Avenue, Tacoma, 98444
CLARKE, George W.	R	41	1111 Hoge Building, Seattle, 98104
CONNER, Paul	D	24	195 Pinnell Road, Sequim, 98382
CRASWELL, Ellen	R	23	8066 Chico Way N.W., Bremerton, 98312
DECCIO, Alex A.	R	14	P.O. Box 1343, Yakima, 98907
FLEMING, George	D	37	1100 Lake Washington Blvd. So., Seattle, 98144
FULLER, W. H. "Bill"	R	20	330 Brockway Road, Chehalis, 98532
GASPARD, Marcus	D	25	8220—191st Ave. E., Sumner, 98390
GOLTZ, H. A. "Barney"	D	42	3003 Vallette Street, Bellingham, 98225
GRANLUND, Barbara	D	26	3777 Pine Tree Drive, Port Orchard, 98366
GUESS, Sam C.	R	6	W. 408 33rd Avenue, Spokane, 99203
HALEY, Ted	R	28	5800—100th Street, S.W. #30, Tacoma, 98499
HANSEN, Frank "Tub"	D	13	Star Route, Box 73, Moses Lake, 98837
HAYNER, Jeannette	R	16	Box 454, Walla Walla, 99362
HEMSTAD, Dick	R	22	130 North Sherman, Olympia, 98502
HUGHES, Jerry M.	D	5	N. 3504 Milton, Spokane, 99205
HURLEY, Margaret	D	3	East 730 Boone Avenue, Spokane, 99202
JONES, John D. 110 84	R	48	18 Bridlewood Circle, Kirkland, 98033
KISKADDON, Bill	R	1	4404—242nd Place S.W., Mountlake Terrace, 98043
LEE, Eleanor	R	33	P.O. Box 66274, Burien, 98166
McCASLIN, Bob	R	4	E. 12719 23rd, Spokane, 99216
McDERMOTT, James A.	D	43	1650 22nd Avenue E., Seattle, 98112
McMANUS, Mike	D	21	6315—148th Place S.W., Edmonds, 98020
METCALF, Jack	R	10	3273 East Saratoga Road, Langley, 98260
MOORE, Ray	D	36	1722 Bigelow Avenue North, Seattle, 98109
NEWHOUSE, Irving	R	15	Route 1, Box 130, Mabton, 98935
OWEN, Brad	D	35	P.O. Box 584, Shelton, 98584
PATTERSON, E. G. "Pat"	R	9	N.E. 400 Campus, Pullman, 99163
PETERSON, Lowell	D	40	Box 249, Concrete, 98237
PULLEN, Kent	R	47	22844—172nd S.E., Kent, 98031
QUIGG, J. T.	R	19	109-B Institutions Building, Olympia, 98504
RASMUSSEN, A. L. "Slim"	D	29	5415 A Street, Tacoma, 98408
RINEHART, Nita	D	46	4515—51st Avenue N.E., Seattle, 98105
SELLAR, George L.	R	12	1324 Terrace Drive, East Wenatchee, 98801
SHINPOCH, A. N. "Bud"	D	11	361 Maple Avenue N.W., Renton, 98055
TALMADGE, Phil	D	34	4006 53rd S.W., Seattle, 98116
THOMPSON, Alan	D	18	191 Nob Lane, Kelso, 98626
VOGNILD, Larry L.	D	38	5028 Wilmington, Everett, 98203
von REICHBAUER, Peter	R	30	113 Institutions Building, Olympia, 98504
WARNKE, Frank	D	31	29457—51st Avenue So., Auburn, 98002
WILLIAMS, Al	D	32	4801 Fremont North, Seattle, 98103
WOJAHN, R. Lorraine	D	27	3592 East K Street, Tacoma, 98404
WOODY, Dianne	D	39	24328—47th S.E., Woodinville, 98072
ZIMMERMAN, Hal	R	17	1432 N.E. 6th Avenue, Camas, 98607

SENATORS

BARR, SCOTT

Republican. Senator from the 7th District comprising Lincoln, Pend Oreille, Stevens, Ferry and parts of Okanogan and Spokane Counties. Served three terms in the House, 1977-82. Born in 1916. Attended Whitman County schools. He and his wife, Dollie Mae, live on their cattle, grain and timber farm near Edwall in Lincoln County. Belongs to Grange, Farm Bureau, Cattlemen's Assn. Served as President of State Wheat Growers' Assn. and State Assn. of Conservation Districts. Involved in agri-related businesses and civic affairs.

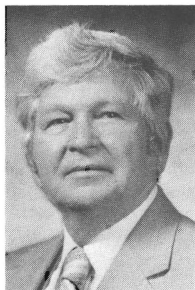
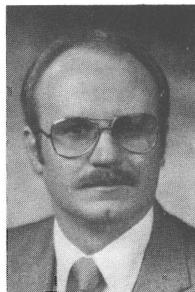


BAUER ALBERT

Democrat. Senator from the 49th District of Clark County, is serving his first term. Served as Representative from 1971 through 1980. Born in Lewistown, Montana in 1928. Graduate Portland State College and Oregon State College with Masters in Education and minor in Political Science. Past President Community Club, PTA, Vancouver Education Association. Member: Kiwanis, Grange, American Legion and Salmon Creek Methodist Church. He is currently self employed in agriculture. He and his wife, Patricia, have three children: Sue, Jim and Nancy.

BENDER, RICK S.

Democrat. He is serving his first term in the Senate representing the newly created 44th District of South Snohomish and North King Counties, following five terms in the House of Representatives. Member of the Education, Financial Institutions, Transportation, & Rules Committees. Born in Fairbanks, Alaska in 1949. Attended North Seattle Community College, University of Washington & the University of Puget Sound; served in the U.S. Army Signal Corps, Vietnam Veteran. Public Relations Representative for an insurance company & part-owner of a construction firm. He and his wife, Carla, and daughter Alisa Dawn, live in south Snohomish County.

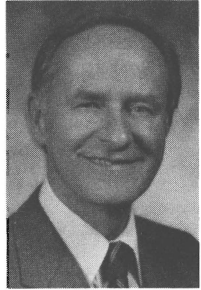


BENITZ, MAX E.

Republican. Senator from the 8th District of Benton County, is serving his third term in the Senate and has served three sessions in the House of Representatives. Born in Wathena, Kansas. He is self-employed in agri-business. Past-president of the Washington State Farm Bureau Federation, past school board member, and former member of the board of directors of the Benton-Franklin County Fair. He and his wife, Marie, have five children.

SENATORS

BLUECHEL, ALAN, Republican Whip
Republican. Senator from the 45th District of King County, is serving his third term in the Senate and has served four terms in the House of Representatives. Born in 1924 in Edmonton, Alberta, Canada. Received a B.A. Sc in electrical engineering, and a B.A. in General Studies from the University of British Columbia. Chairman, State Environmental Policy Commission; Chairman, Winter Recreation Commission; Member, Council on Child Abuse and Neglect. He is President of Loctwall Corporation. Wife, Jeanne, two sons, Gordon and Turner.



BOTTIGER, R. TED, Majority Leader
Democrat. Senator from the 2nd District comprising part of Pierce and Thurston Counties, is serving his eighth session in the Senate and has served four terms in the House of Representatives. Born in 1932 in Tacoma. Graduate from University of Puget Sound with a B.A. degree and the University of Washington Law School. He is an attorney practicing in Tacoma. He and his wife, Darlene, have two children.

CLARKE, GEORGE W.,
Republican Floor Leader
Republican. Senator from the 41st District of King County, served two sessions in the House of Representatives and is serving his eighth session in the Senate. Born in Perry, Iowa, he is an attorney. Served as a naval officer in World War II. Served 20 years, Mercer Island School Board. Member, Seattle Chamber of Commerce and Rotary. He has three children.



CONNER, PAUL H.
Democrat. Senator from the 24th District comprising Clallam, Jefferson and part of Grays Harbor County. Appointed to the Senate in 1957, served ten terms in the House of Representatives, elected to the Senate in 1977. Born in 1925 in Port Angeles. Attended Port Angeles Business College, Western Washington State College, University of Washington and Peninsula College. He and his wife, Thelma, have five children.

SENATORS

CRASWELL, ELLEN

Republican. Senator from the 23rd District, Kitsap County, serving her first term in the Senate. Born in Seattle; raised in Kitsap County. Attended the University of Washington. Worked in Medical Technology and Speech Therapy, and was co-owner of an art shop. Served two terms in the House of Representatives where she co-chaired the Revenue and Taxation Committee. She and her husband, Bruce, have four grown children.

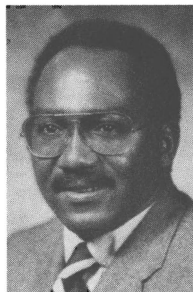


DECCIO, ALEX A., Republican Caucus Vice Chairman

Republican. Senator from the 14th District, covering Yakima, Selah and part of Yakima County. Serving second two years of term. Was Chairman of Senate Social and Health Services and Corrections, Sub-committee chairman of Ways and Means for Human Services. Served three terms in the House. Was Asst. Floor Leader. An insurance broker, Alex has been long active in Yakima community, civic and public affairs. Elected in 1974 to the House. He and his wife Lucille have seven children.

FLEMING, GEORGE, Majority Caucus Chairman

Democrat. Senator 37th District, King County. Served one session in House, serving eighth session in Senate. Born in 1938 in Dallas. Graduate of U of W with B.A. in Business Administration. Member of Rose Bowl teams in 1960 and 1961. Economic Development Manager, Pacific NW Bell. Member: St. Urban, Racial, Rural Disadvantaged Committee, Randolph Carter Center; Pacific NW Travel Assn.; Economic Development Executives of Washington. He and his wife, Tina, have two daughters, Sonja and Yemi.



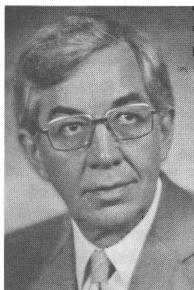
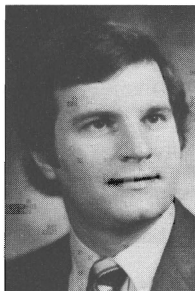
FULLER, WILLIAM H. "BILL"

Republican. First elected in 1976 as Representative, elected to Senate in 1980, from 20th District comprised of Lewis Co., SW Thurston Co., plus Tumwater & much of West Olympia. Born Sandpoint, Idaho, 1913. Resident of Washington since 1930. Bill has been president of 125 employee firm founded by him and his brother in 1941. Served 4 years in Navy in WWII; member of Chamber of Commerce (Past Pres.); Rotary Club (Past Pres.); Industrial Commission; Mason; Shrine Club; Presbyterian Church; Toastmasters; Wash. Farm Forestry Assoc. & Board Member United Way of Lewis Co. He & his wife, Claire, live on a tree farm outside of Chehalis.

SENATORS

GASPARD, MARCUS S.

Democrat. Senator from the 25th District of Pierce County. He has served in the Senate since 1976 after serving two terms in the House of Representatives. He is currently the Chairman of Education, Vice-Chairman of Ways and Means and is a member of the Agriculture Committee. He was born in 1948 and reared in Puyallup, Washington. He is a graduate of the University of Oregon and is employed in the field of real estate and property management. Marc and his wife, Jo Anne, and their daughter Morgan, live in Sumner, Washington.

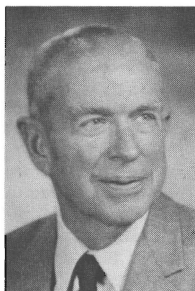


GOLTZ, H. A. "BARNEY", President Pro Tempore

Democrat. Senator from the 42nd District, Whatcom County, is serving his ninth year in the Senate and has served one term in the House of Representatives. Born in 1924 in Minnesota. Graduate Macalester College, B.A., and University of Minnesota, M.A. Formerly Director of University Planning at WWU, Bellingham, now Vice President of Answers, Inc., a management, planning consulting firm. He and his wife, Marguerite, have one son and two granddaughters.

GRANLUND, BARBARA

Democrat. Senator from the 26th District comprising parts of Pierce and Kitsap Co. Served as Representative for two terms. Born in Nebraska, educated in Tacoma public schools, attended Olympic College; a resident of the 26th District for 34 years. She is a homemaker & a community & Democratic Party activist. Serves on Kitsap United Way Board & in other organizations including: League of Women Voters, American Cancer Society, P.T.A., Children's Orthopedic Hospital, Port Orchard Kiwanianes & Port Orchard Business & Professional Women. She & her husband, Win, reside in Port Orchard & have two children & two grandchildren.



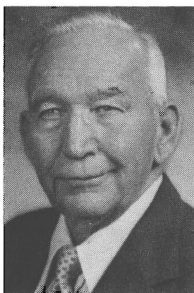
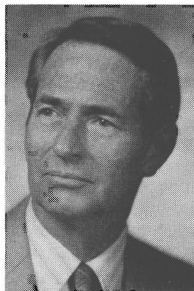
GUESS, SAM C.

Republican. Senator from the 6th District of Spokane County, is serving his twelfth session. Born in 1909 in Greenwood, Mississippi. Holds a B.S. in Civil Engineering from University of Mississippi and an M.S. in Engineering from WSU. Served with the First U.S. Army in Europe. Member, Sigma Nu fraternity and Kiwanis Club. He and his wife, Dorothy, have raised two children.

SENATORS

HALEY, TED

Republican. Senator from the 28th District comprising Lakewood, Steilacoom, Fircrest and University Place, is serving his second term in the Senate. Served three terms in the House of Representatives. Co-Chairman of the Energy and Utilities Committee in the House in 1979. Served on the Rules, Ways & Means, Parks & Ecology, Financial Institutions and Insurance Committees in the Senate. Born in Tacoma in 1920. Has a B.A. from Amherst College and M.D. from the University of Rochester, is a Lt. Col., retired, from the U.S. Army Medical Corps, in private practice in Lakewood. A widower with four grown children.

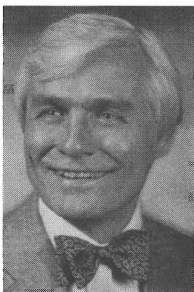


HANSEN, FRANK "TUB"

Democrat. Senator from the 13th District comprised of Kittitas, most of Grant, part of Yakima, and Adams Counties, serving his fifth session in the Senate, served six years in the House of Representatives. Born in Olema, Washington. Retired cattle rancher, Past Chairman Agriculture Stabilization Conservation Service; Past Director, Washington State Cattlemen's Association. Member: Grange, Farm Bureau, and Elks. He and his wife, Wanda, have two sons and two daughters.

HAYNER, JEANNETTE, Republican Leader

Republican. Senator from the 16th District comprising Walla Walla County, part of Franklin and Benton Counties. Serving her second term in the Senate, served four years in the House of Representatives. Received B.A. and J.D. degrees from the University of Oregon. Active in a variety of civic activities. Currently serves on several state and regional citizen advisory boards, including Organized Crime Advisory Board, and is a member of the Washington State Conservation Commission. Member of the Lutheran Church. She and her husband have three children.



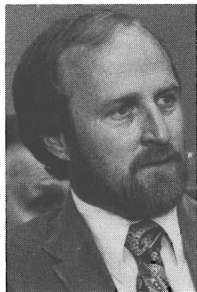
HEMSTAD, DICK

Republican. Senator from the 22nd District of Thurston County serving his first term. Born in 1933, raised in Willmar, Minnesota. Graduate St. Olaf College, B.A., and University of Chicago Law School. Practiced law in Seattle for 10 years; served as legal counsel to Governor Dan Evans, 1967-1973 and as State Director of Community Development, 1973-1977. Professor of Law, University of Puget Sound School of Law. Lutheran. He and his wife, Micki, have four children.

SENATORS

HUGHES, JERRY M.

Democrat. Senator from the 5th District, Spokane. Born in 1944, and a resident of Spokane since 1962, he is a graduate of Gonzaga University with a degree in Political Science and Government and is currently an instructor at Gonzaga University in Government and History at North Central High School, Spokane. He is married and has four children. Served two terms in the House of Representatives and is serving his first term in the Senate.



HURLEY, MARGARET

Democrat. Senator from the 3rd District of Spokane County, is serving her first term with the Senate and has served fourteen terms with the House of Representatives. Graduate, Holy Names College with Bachelor of Arts in Education. Member: Eastern Washington University Foundation, National Order of Women Legislators. She has four children.

JONES, JOHN D.,

Republican Caucus Chairman

Republican. Senator from the 48th District of King County. Served one session in the House of Representatives and was appointed to the Senate January 8, 1973, and is serving his seventh session. Born in 1923 in Wales. Attended Wayne State University, is a Community Affairs Manager of Pacific Northwest Bell Telephone. Past President, Bellevue Chamber of Commerce; President, Rotary; Chairman, North King County UGN. He and his wife, Ruth have two children.



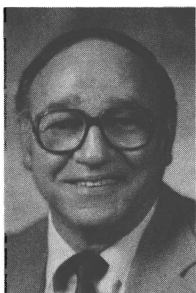
KISKADDON, BILL

Republican. Senator from the 1st District of King and Snohomish Counties, serving his first term in the Senate. Served three terms in the House of Representatives from 1966 through 1972. Born in California in 1929. Graduate of University of Washington with B.S. and M.S. in Electrical Engineering and Masters of Social Work degrees. Formerly an electronic research engineer, now a counselor and therapist in private practice. He and his wife, Donna, have three children.

SENATORS

LEE, ELEANOR

Republican. Senator from the 33rd District. Attended Washington State University and graduated from The Evergreen State College in Political Science. Business manager and director of a manufacturer's representative firm. Former State Land Planning Commissioner and League of Women Voters official; Past chair of Fire District 2, Civil Service Board, Highline Citizens for Schools, and Civil Air Patrol Advisory Committee. Founder and co-chair Elected Washington Women. She and her husband, David, have three daughters and three grandsons.

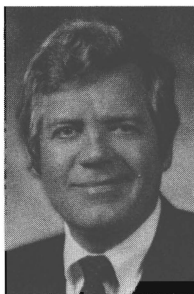


McCASLIN, BOB

Republican. Senator from the 4th Legislative District of Spokane County. Born in Warren, Ohio in 1926, served in the U.S. Navy during WW II, graduate of WSU in 1950 with a major in Sociology and Economics. Served in Production Management for 17 years with large aluminum fabricator and for the past 11 years has owned and managed a real estate firm in the Spokane Valley. Married, has two children, Janie and Bob, and with wife, Wanda, has been active in many service clubs and civic activities in the Spokane Valley.

McDERMOTT, JIM

Democrat. Senator from the 43rd District, King County, is serving his third term in the Senate and served one term in the House of Representatives. Age 46. Graduate, Wheaton College, B.A., and University of Illinois Medical School; is a child and adult psychiatrist. LCDR (MC) USNR, 1968-1970. Former chairman, Coalition for Open Government. He and his wife, Virginia, have two children.



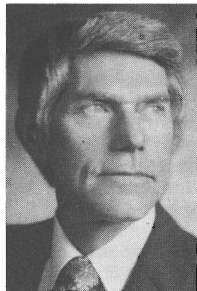
McMANUS, MIKE

Democrat. Senator from the 21st Legislative District of South Snohomish County. He lives in Edmonds and is President of INTERACTION INCORPORATED. Born in Wisconsin in 1933, Mike was educated at the U of W & holds a BA in Political Science & a Master of Education. He has been an independent businessman since 1972 & has a proven background in corporate management & administration. Mike has been a leader in the fields of Community Mental Health & Job Placement. He was a teacher & coach in the Shoreline School Dist., a university professor at UPS & served as a Lt. in the USAF.

SENATORS

METCALF, JACK

Republican. Senator from the 10th District (Island County, part of Snohomish and part Skagit Counties). Served two sessions in the House and served five previous sessions in the Senate. Born in Marysville. Graduate, Pacific Lutheran University. Retired teacher of history, mathematics and government. Member: Whidbey Island Transportation (director), South Whidbey Kiwanis, Past President; Grange; Backcountry Horsemen of Washington; Washington Association of Professional Educators; member National Association of State Legislators. He and his wife, Norma, have four daughters, three grandchildren.



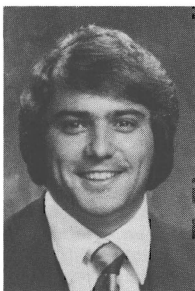
MOORE, RAY

Democrat. Senator from the 36th District, King County, is serving his second term in the Senate. Born in Seattle, attended the University of Washington. Businessman. President, King Gallatin Restaurant Corp.; Securities Broker with The National Securities Corporation; Partner, Sagemoor Farms; Board Member, Northwest Small Hydroelectric Association; A Founder, ACT Theatre; Former Chairman, Washington State Securities Committee. Past president, Washington State Mental Health Association.

NEWHOUSE, IRVING,

Republican Assistant Floor Leader

Republican. Senator from the 15th District of lower Yakima County and western Benton County serving his first full term in the Senate having been appointed in 1980 to complete the term of newly-elected Congressman Sid Morrison. He served eight terms in the House. Native of the Yakima Valley, graduate of Washington State University with B.S. in Agriculture, operates an irrigated, diversified ranch. He and his wife, Ruth, have six children.



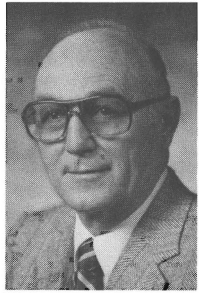
OWEN, BRAD

Democrat. Is serving his first term from the 35th District which encompasses all of Mason County and parts of Kitsap, Grays Harbor, and Thurston Counties. Owen has been a successful small businessman and prominent member of his community for the last 12 years. He served six years in the House of Representatives and four years as Finance Commissioner for the City of Shelton. Senator Owen's primary interests have been in Washington's natural resources, transportation and correctional institutions.

SENATORS

PATTERSON, E. G. "PAT"

Republican. Senator from the 9th District, serving his first term, preceded by eight years in the House of Representatives where he held Republican leadership positions. A native of Pullman, Washington. Army officer veteran of WW II. Graduate of Washington State University with B.A. in Political Science in 1946. Served as State Adjutant Quartermaster, VFW; retired after 26 years as Director of WSU's Alumni Relations, Scholarship and Development Fund, Graduate Records and Legislative Consultant. Member of Pullman Chamber of Commerce and VFW. He and his wife, Maxine, have seven grown children.

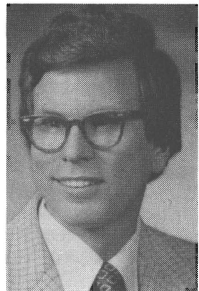


PETERSON, LOWELL

Democrat. Senator from the 40th District comprising San Juan and Skagit Counties and part of Whatcom County, he is serving his eleventh session. Born in 1921 in Pateros, Washington, is an oil distributor. Served in the Navy in WW II. Member, American Legion, Eagles and Elks. A widower, Senator Peterson has three grown children.

PULLEN, KENT

Republican. Senator from the 47th District. Elected to State House of Representatives in 1972, elected to State Senate in 1974, and re-elected to State Senate in 1978 and 1982. Born in El Paso, Texas, in 1942. Graduate of University of New Mexico (B.S., 1963) and University of Washington (PhD., 1967). Former Assistant Professor of Chemistry at the University of Idaho. Currently works as a research engineer for The Boeing Company. He and his wife, Fay, have two children.



QUIGG, J. T.

Republican. Senator from the 19th District comprised of Pacific and Wahkiakum Counties and part of Cowlitz and Grays Harbor Counties, serving his second term in the Senate. Born in 1947 in Aberdeen, WA, received a BS in Commerce in 1969 from the Univ. of Santa Clara. Marketing manager of Quigg Bros.-McDonald Inc., served as Grays Harbor Co. Delegate to Shorelines Master Plan, member of City of Aberdeen Park Board, & member of Grays Harbor County and City of Aberdeen Shorelines Hearings Boards. He & his wife, Janie, have three children and make their home in Aberdeen.

SENATORS

RASMUSSEN, A. L. "SLIM",

Vice President Pro Tempore

Democrat. Senator from the 29th District of Pierce County. He has served eight terms in the House of Representatives and is serving his twelfth session in the Senate. He has served on Tacoma School Board, Mayor of Tacoma, and Pierce County Councilman. He and his wife, Eleanor, have four children.

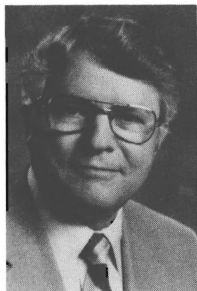
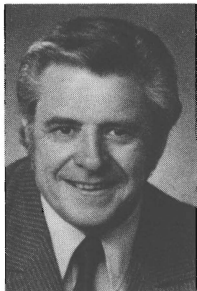


RINEHART, NITA

Democrat. Represents the 46th District of King County. Served in House of Representatives 1980-1982. Born, Texarkana, Texas. Graduate Southern Methodist University. B.A. in English Literature, B.A. in Music. Member of League of Women Voters; Mortar Board Alumni; Women's Political Caucus; Board of Directors, Washington State Chapter, National Sudden Infant Death Syndrome Foundation; Intergovernmental Fiscal Policies Task Force; National Conference of State Legislatures.

SELLAR, GEORGE L.

Republican. Senator from the 12th District comprising Chelan, Douglas and parts of Grant, Kittitas and Okanogan counties, serving his twelfth year in the Senate. Born in 1929 in Chicago. He is Manager-Water Resources for the Port of Chelan County. Attended Wenatchee Valley College and the University of Nebraska. Member, Chamber of Commerce, Pacific Northwest Waterways Association, and Washington Public Ports Association. He and his wife Alma live in East Wenatchee.



SHINPOCH, ALBERT N. "BUD",

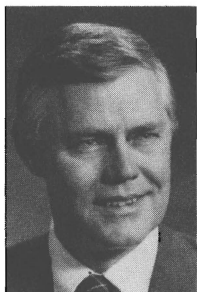
Assistant Majority Leader

Democrat. Senator from the 11th District, comprising parts of Renton, Kent and King County, serving his second term in the Senate, served four terms in the House of Representatives. Born in Council Hill, Oklahoma. Past President Renton Association for Handicapped Children. Member: Greater Kent Chamber of Commerce, Region IV Department of Social and Health Services Advisory Committee. Retired member of Management, The Boeing Company. Bud and his wife, Barbara, have two daughters and three grandchildren.

SENATORS

TALMADGE, PHIL

Democrat. Senator from the 34th District of King County. A magna cum laude graduate of Yale University with a B.A. in Political Science and a graduate of the University of Washington School of Law, where he served on the Law Review. An attorney with the firm of Karr, Tuttle, et al. in Seattle. He and his wife, Darlene, have two sons and a daughter.

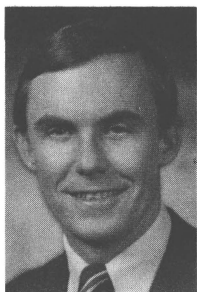
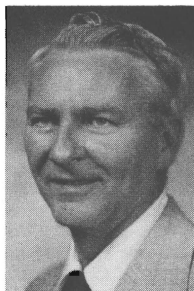


THOMPSON, ALAN

Democrat. Senator from the 18th District in Clark and Cowlitz Counties, was appointed in November 1982 to fill unexpired term of late Senator Don Talley. He had served nine terms in the House of Representatives. Served in the Navy. Earned B.A. degree at University of California, Berkeley. He and his wife, Barbara, publish two weekly publications: the Cowlitz County Advocate and the Lewis County News. They have four sons.

VOGNILD, LARRY L., Majority Whip

Democrat. Senator from the 38th District of Snohomish County serving his second term. Born in 1932 in Spokane. He is a retired Battalion Chief of the Everett Fire Fighters. He is currently self-employed. Member: Eagles, Chamber of Commerce, Kiwanis and Normanna Lodge. Served eight years in the Naval Reserve, two years active duty in Korea. He and his wife Dorothy have a son and three daughters.



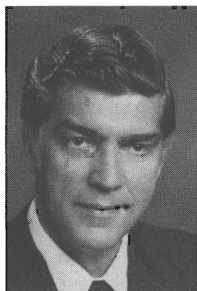
von REICHBAUER, PETER

Republican. Senator from the 30th District, comprising parts of Auburn, Federal Way, Tacoma and Vashon Island. Elected to Senate in Nov. 1973 for unexpired term, re-elected in 1974, 1978 and 1982, for four-year terms. Born in Seattle, raised in Tacoma, graduated from University of Alabama, commissioned in U.S. Army, and is in Investment Management; Kiwanis (Board of Directors); Vice Chairman, U.S. Olympics Comm. of Wash.; Northwest Steelheaders; Federal Way Boys' & Girls' Club Board; Beta Theta Pi; Ducks Unlimited and others.

SENATORS

WARNKE, FRANK

Democrat. Senator from the 31st District, South King County. Served in the 1965-67 and 1973-75, 75-77, 77-79, 80, 81 and 82 sessions. Born in Harlem, Montana in 1933. Studied Political Science at Central Washington State College and the University of Washington. Employed as Executive Director of the Public School Employees of Washington. Married and has two children.



WILLIAMS, AL

Democrat. Senator from the 32nd District, Seattle. Served eight years in the House of Representatives and is serving his sixth year in the Senate. An architect by profession, born in 1930 in North Dakota. He served in the U.S. Marine Corps, and is a graduate of the University of Washington School of Architecture and Urban Planning. Served on the Ballard Avenue Landmark Board, Seattle Design Commission and Lake Union Advisory Commission. Member, Phinney Ridge and Wallingford Community Councils and Fremont Neighborhood Council and Board Member Fremont Public Association.

WOJAHN, R. LORRAINE,

Majority Assistant Caucus Chairman

Democrat. Senator from the 27th District of Pierce County. Completed four terms in House of Representatives and is serving her second term in the Senate. Born in Tacoma. Educated in Seattle schools and U. of W. Former consumer specialist for Washington Labor Council; Board Member, Consumer Credit Counseling Service, Inc., Tacoma; served ten years, Washington State Judicial Council; seven years, Washington State Women's Council; and one year, National Advisory Board of Consumer Federation of America. She and her husband, Gilbert, have one son.



WOODY, DIANNE H.,

Majority Caucus Secretary

Democrat. Senator from the 39th District of Snohomish and King Counties (part). Is serving her fifth session in the Senate. Born in Washington State and attended schools in both Eastern and Western Washington. Graduated from Western Washington State College with majors in Psychology and History, and has done post-graduate work at the University of Washington. She has been a social worker and small business proprietor and currently lives in Woodinville with her son and daughter.

SENATORS

ZIMMERMAN, HAROLD S. "HAL",
Republican Assistant Whip

Republican. Senator from the 17th District (Klickitat, Skamania, & part of Clark Co.) served 14 years in the House of Representatives. Born in 1923 in Valley City, ND. Graduate, U of W with a B.A. degree; is Associate Publisher of Camas-Washougal Post-Record; Director, Eagle Newspapers of Washington, Oregon & Idaho. Served in the Air Force in World War II. Past President, Washington Newspaper Publishers Assoc. Member, Sigma Chi, United Methodist Church, Kiwanis, Grange. He & his wife, Judy, have raised three children, Karen, Steve & Julie.

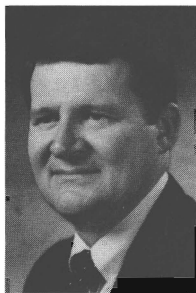


SNYDER, SID

Democrat. Secretary of the Senate, elected May 1969, and serving his tenth session. Was Assistant Chief Clerk and Acting Chief Clerk of the House from 1957 through May, 1969. First worked for the Legislature in 1949. Born in 1926 in Kelso. Attended Lower Columbia College, owns and operates a supermarket in Long Beach. He and his wife, Bette, have three grown children.

GLEASON, BILL

Democrat. Assistant Secretary of the Senate, first session worked was in the House of Representatives in 1961 and each session thereafter until 1969. Serving his tenth session in the Senate. Born in 1940 in Tacoma. Attended Centralia Community College and Western Washington University. Member of the Elks.



SCARPELLI, ORLANDO F. "OLE"

Democrat. Elected Sergeant at Arms of the Senate in 1983. Served as Assistant Sergeant at Arms from 1967 to 1972. Assistant to the President of the Senate, Lieutenant Governor John Cherberg since 1972. Born in Auburn, Washington. Attended Gonzaga University. Served in the U.S. Navy. Also worked for the State Tax Commission and the License Department. He and his wife, Esther, have two grown daughters and three grandchildren.

HOUSE OF REPRESENTATIVES OF THE STATE OF WASHINGTON



WAYNE EHLERS
Speaker of the House

Wayne Ehlers, Representative from the 2nd District of Pierce and Thurston Counties, is serving his sixth term. Born in Bellingham in 1938, he is an educator. Graduate of WWSC (B.A. and B.S.) and the University of Denver (M.A.). Active in professional and civic organizations. He has two sons.

ROSTER OF MEMBERS

HOUSE OF REPRESENTATIVES

98 Members—
54 Democrats, 44 Republicans

MEMBER	Party	Dist.	MAILING ADDRESS
ADDISON, Bruce	R	34	4509 S.W. Holgate, Seattle 98116
ALLEN, Katherine Y.	R	21	21712 85th Pl. W., Edmonds 98020
APPELWICK, Marlin	D	46	12721 30th Ave., N.E. Seattle 98125
ARMSTRONG, Seth	D	36	1715 Bigelow N., Seattle 98109
BALLARD, Clyde	R	12	1790 N. Baker, East Wenatchee 98801
BARNES, Richard O.	R	33	18118 6th Ave. S.W., Seattle 98166
BARRETT, Richard H.	R	5	N. 9819 Nez Perce Crt., Spokane 99208
BELCHER, Jennifer	D	22	6015 Hansen Rd. S.E., Olympia 98503
BETROZOFF, John	R	45	11818 156 Avenue N.E., Redmond 98052
BOND, R. M. "Dick"	R	6	S. 4226 Crestline, Spokane 99203
BRADDOCK, Dennis	D	42	2720 Sunset Drive, Bellingham 98225
BREKKE, Joanne	D	32	6525 Sycamore N.W., Seattle 98117
BROBACK, Art	R	28	3616 Soundview Dr. W., Tacoma 98466
BROUGH, Jean Marie	R	30	1118 South 287th Pl., Federal Way 98003
BURNS, Bill	D	43	2511 W. Montlake Pl. E., Seattle 98112
CANTU, Emilio	R	41	4416 138th Ave. S.E., Bellevue 98006
CHANDLER, Glyn	R	13	1816 Dunn Street, Moses Lake 98837
CHARNLEY, Donn	D	1	19344 11th Ave. N.W., Seattle 98177
CLAYTON, Harold	R	15	412 Bolin Drive, Toppenish 98948
CRANE, Ernest	D	31	P.O. Box 37, Auburn, WA 98002
DELLWO, Dennis	D	3	424 Old Ntl. Bank Bldg., Spokane 99201
DICKIE, Lyle J.	R	15	Route 1, Box 1365A, Grandview 98930
EBERSOLE, Brian	D	29	920 So. Proctor Street, Tacoma 98405
EGGER, Louis	D	7	Box 262, Colville 99114
EHLERS, Wayne	D	2	Speaker's Office, 3rd Floor, Legislative Building, Olympia 98504
ELLIS, Jerry	D	14	5304 Bristol Way Court, Yakima 98908
FISCH, Richard E.	D	24	620 West 9th, Port Angeles 98362
FISHER, Ruth	D	27	1922 N. Prospect #9, Tacoma 98406
FISKE, Pat	R	40	P.O. Box 336, Mount Vernon 98273
FUHRMAN, Steve	R	7	Route 1, Box 320, Kettle Falls 99141
GALLAGHER, P. J. "Jim"	D	29	125 South 72nd, Tacoma 98408
GALLOWAY, Shirley	D	49	1602 North Divine Rd., Vancouver 98661
GARRETT, Avery	D	11	602 S.W. Langston Rd., Renton 98055
GRIMM, Dan	D	25	904 7th Avenue S.W., Puyallup 98371
HALSAN, STUART	D	20	1701 Daniels Rd., Centralia 98531
HANKINS, Shirley W.	R	8	2120 Duportail, #8, Richland 99352
HASTINGS, Doc	R	16	5505 West Sylvester, Pasco 99301
HAUGEN, Mary Margaret	D	10	1268 W. Olsen Rd., Camano Island 98292
HECK, Dennis L.	D	17	707 N.E. 118th Avenue, Vancouver 98664
HINE, Lorraine A.	D	33	1834 South 229th, Des Moines 98188
HOLLAND, Bruce	R	47	16216 133rd Place S.E., Renton 98055
ISAACSON, Ray	R	8	2106 Lee Boulevard, Richland 99352
JACOBSEN, Ken	D	46	7500 43rd Ave. N.E., Seattle 98115
JOHNSON, Stanley C.	R	28	7302 66th Avenue West, Tacoma 98467
KAISER, Duane L.	D	2	4802 180th St. E., Tacoma 98446
KING, Joseph E.	D	49	P.O. Box 5375, Vancouver 98668
KING, Paul H.	D	44	22909 61st Ave. W., Mountlake Terrace 98043
KING, Richard	D	38	309 77th Place S.W., Everett 98203
KREIDLER, Mike	D	22	129 San Mar Drive N.E., Olympia 98506
LEWIS, Jim	R	14	P.O. Box 2869, Yakima 98907
LOCKE, Gary F.	D	37	5150 S. Wildwood Lane, Seattle 98118

ROSTER OF MEMBERS

HOUSE OF REPRESENTATIVES 98 Members—
54 Democrats, 44 Republicans

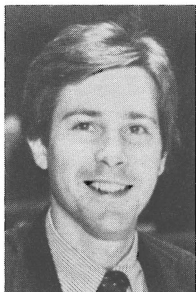
MEMBER	Party	Dist.	MAILING ADDRESS
LONG, Jeanine	R	44	14730 24th Avenue S.E., Bothell 98011
LUX, Eugene V.	D	11	5537 South 119th, Seattle 98178
MARTINIS, John	D	38	212 Skyline Drive, Everett 98201
McCLURE, Barney	D	24	613 F Street, Port Townsend 98368
McDONALD, Dan	R	48	4650 92nd N.E., Bellevue 98004
McMULLEN, Patrick	D	40	P.O. Box 152, Sedro Woolley 98284
MILLER, Louise	R	45	17005 191st Ave. N.E., Woodinville 98072
MITCHELL, James B.	R	39A	1015 Stich Road, Lake Stevens 98258
MONOHON, Carol	D	19B	House Office Bldg., Rm. 336, Olympia 98504
MOON, Charles	D	39B	13201 Old Snohomish Monroe Hwy., Snohomish 98290
NEALEY, Darwin	R	9	Box 365, LaCrosse 99143
NELSON, Dick	D	32	3612 Whitman North, Seattle 98103
NELSON, Gary A.	R	21	9710 Wharf Street, Edmonds 98020
NIEMI, Janice	D	43	226 Summit Ave. East, Seattle 98102
O'BRIEN, John L.	D	37	1305 Joseph Vance Bldg., Seattle 98101
PADDEN, Mike	R	4	E. 13021 9th Ave., Spokane 99216
PATRICK, Michael E.	R	47	13232 S.E. 192nd, Renton 98055
POWERS, Carolyn	D	26	825 Ada Street, Port Orchard 98366
PRINCE, Eugene A.	R	9	P.O. Box 69, Thornton 99176
PRUITT, Paul	D	34	7537 31st S.W., Seattle 98126
RISTUBEN, Oliver*	D	18	P.O. Box 82, Woodland 98674
RUST, Nancy S.	D	1	18747 Ridgfield Rd. N.W., Seattle 98177
SANDERS, Paul	R	48	2680 169th S.E., Bellevue 98008
SAYAN, Doug	D	35	E. 211 Shore Drive, Grapeview 98546
SCHMIDT, Karen	R	23	10805 Bill Point View, Bainbridge Isl. 98110
SCHOON, Dick	R	30	2669 S. 300th Street, Federal Way 98003
SILVER, B. Jean	R	5	N. 7102 Audubon Drive, Spokane 99208
SMITH, Curtis P.	R	13	Route 2, 875 I N.W., Ephrata 98823
SMITHERMAN, Bill	D	26	3408 N. Vassault St., Tacoma 98407
SOMMERS, Helen	D	36	2516 14th West, Seattle 98119
STRATTON, Lois	D	3	1724 W. Mansfield, Spokane 99205
STRUTHERS, Gene	R	16	601 Village Way, #50, Walla Walla 99362
SUTHERLAND, Dean A.	D	17	23503 N.E. 108th St., Vancouver 98662
TANNER, Joe	D	18	16121 N.E. 35th Ave., Ridgfield 98642
TAYLOR, Ren	R	4	North 4710 Ella Road, Spokane 99206
TILLY, Earl F.	R	12	1509 Jefferson, Wenatchee 98801
TODD, Mike	D	31	17123 S.E. 339th, Auburn 98002
VAN DYKEN, Roger	R	42	1251 Garden Circle, Lynden 98264
VANDER STOEP, J.	R	20	727 S.W. 16th Street, Chehalis 98532
VEKICH, Jr., Max	D	35	200 Holly Lane, P.O. Box E, Cosmopolis 98537
WALK, George W.	D	25	11607 98th Avenue East, Puyallup 98371
WANG, Art	D	27	2402 N. Madison, Tacoma 98406
WEST, Jim	R	6	E. 3613 Congress, Spokane 99203
WILLIAMS, Bob	R	19A	111 Victoria Street, Longview 98632
WILLIAMS, Joseph L.	R	41	4 Lindley Road, Mercer Island 98040
WILSON, Simeon R. "Sim"	R	10	P.O. Box 145, Marysville 98270
ZELINSKY, Sr., Paul	D	23	7476 Woodridge Lane N.W., Bremerton 98310

*Appointed

REPRESENTATIVES

ADDISON, BRUCE

Republican. Representative from 34th District, serving his third term. Graduate of Washington State University in Political Science and Economics. Addison is an Associate Realtor. His community activities include West Seattle YMCA, Board of Managers; South West Youth Service Bureau, Board of Directors; West Seattle Chamber of Commerce, Board of Directors; South Seattle Community College Foundation; West Seattle Friend to Friend, Board of Directors; Genesee Hill Community Council, Board of Directors, and West Seattle Jaycees.

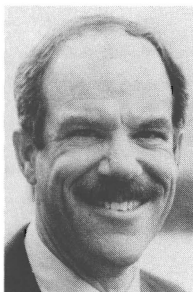
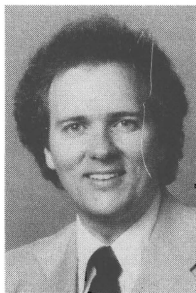


ALLEN, KATIE

Republican. Representative from 21st Legislative District in S.W. Snohomish County is serving her first term. A resident of Edmonds, she was born in Colorado graduating from University of Denver with a B.A. in economics. Has served on Edmonds City Council, Edmonds School Board, Puget Sound Council of Governments, Board of Snohomish Health District. Belongs to, among others, League of Women Voters, American Association of University Women, and is stated clerk for Presbytery of North Puget Sound. She and husband, Bill, have three daughters and one granddaughter.

APPELWICK, MARLIN J.

Democrat. Representative from the 46th Legislative District, King County, is serving his first term. Attorney with Helenius, Trickey & Appelwick, formerly Transportation Consultant with ETA:2000. Member Lake City Lions Club, Chamber of Commerce Board, SPARCC Board, Community Center Board; U.W. Law School Alumni Board and Coordinator of Lake City Legal Clinic. He is married and his wife's name is Linda.



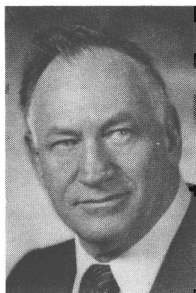
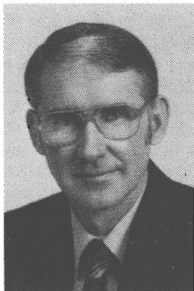
ARMSTRONG, SETH

Democrat. Representative from the 36th District in Seattle, serving his first full term. Attorney, Armstrong & Alsdorf; author and teacher, credit and consumer law in Washington; Seattle Chamber of Commerce, Small Business Council; YMCA; Municipal League; Blockwatch leader; member Queen Anne Community Council; served on Ethics, Law & Justice, Energy and Utilities and Education Committees.

REPRESENTATIVES

BALLARD, CLYDE

Republican. Representative from 12th District comprising Chelan and Douglas Counties; parts of Okanogan, Kittitas and Grant. Owns and operates emergency medical business including ambulance and health supplies. Certified Paramedic. Serves on Washington State Emergency Medical Services Committee which sets standards for emergency medical personnel and equipment. Served as a Commissioner East Wenatchee Water District and Douglas County Fire District, active in community organizations. He and his wife, Ruth, have three sons.



BARNES, DICK

Republican. Representative of the 33rd District, Des Moines, Normandy Park, the Sea-Tac Airport and parts of Burien; serving his fifth term. Born in Iowa, he left the University of Illinois to become an Air Force pilot during World War II. As a Reservist, he was recalled for duty during the Korean and Vietnam wars. Educated as a Geophysical Engineer at the Colorado School of Mines, employed by the Boeing Company since 1955 and is presently a Systems Analyst in Air Traffic Control Studies. He and his wife, Sylvia, have three children.

BARRETT, DICK

Republican. Fifth District, Northwest Spokane. Assistant Republican Floor Leader, serving second term. During his first term was chairman of House Subcommittee on International Trade. He is a hotel sales manager in Spokane. Former newspaper editor, TV newsman, ad agency manager, trade association executive. Was president of Spokane Plan Commission. U. of W. graduate in Journalism. Member of Lions Club, Beta Theta Pi, Peddlers Club. Is a free lance writer and professional photographer. He and his wife, Pam, have four children.



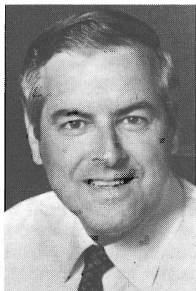
BELCHER, JENNIFER

Democrat. Representative from District 22 comprising most of Thurston County, serving her first term. Jennifer and husband, Larry, are long-time Olympia residents. She is President of Management Dynamics, a management consulting firm. Jennifer worked as a state employee for 11 years, and has been as active member of the Community, serving on various Boards of Directors. She is nationally recognized for innovative management and training programs and interest in government and politics.

REPRESENTATIVES

BETROZOFF, JOHN W.

Republican. 45th District—NE King County, first term. Graduate Raymond High School, Grays Harbor College, Western Washington State University (BA & MA in Education), and attended University of Washington Graduate School. Work experiences in public schools (Bellevue), real estate, property management, day care, and House staff analyst. Community services in YMCA; Big Brothers; Puget Power Customer Council; Redmond Chamber of Commerce, Lions Club, and Derby Days Festival. Presently self-employed property manager. He and wife Sara Jo live just north of Redmond.

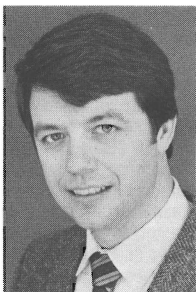


BOND, R. M. (DICK)

Republican. Representative from 6th District of Spokane County, serving fifth term. Born in Spokane, educated at Calif. Institute of Tech., Univ. of Calif. Berkeley (ASB President), Univ. of So. Calif. with degrees in Mech. Engr., Bus. Admin., and a comm. pilot's lic. Marine Corps WW II vet.; Rotarian; Washington State Director, American Legis. Exchange Council; American Legion; Director of Nat'l. LP-Gas Assoc.; Air Force Assoc.; Eagle Scout and a Christian. Founded and operates Solar Gas Co. in Spokane and Calgary. He and wife, Patty, have three sons.

BRADDOCK, DENNIS

Democrat. Representative from Legislative District 42, comprising all of Whatcom County except the southern portion of Bellingham, is serving his first term. Graduate, W.S.U. and W.W.U. with a BA in Political Science, operates a planning consulting firm and a typesetting and publishing business. Has served as Peace Corps volunteer, is a Vietnam veteran, and has served nine years on Bellingham City Council. Born in Washington; he and his wife, Kay, have a daughter, Shannon, and son, Adam.



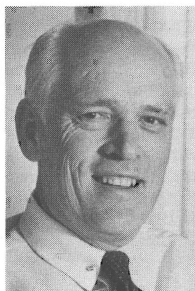
BREKKE, JOANNE J.

Democrat. Representing Seattle's 32nd District; Ballard, Fremont, Green Lake, Greenwood, Phinney Ridge, Wallingford and University District. Appointed February, elected November 1978. A lifetime King County resident, born in North Bend, Washington. Graduated University of Washington 1957, with a B.A. in Sociology. Active in education and community concerns. She and her three children Melene, Marshall and Alison live on Phinney Ridge.

REPRESENTATIVES

BROBACK, ART

Republican. Representative from the 28th District; Fircrest, University Place, Lakewood and Steilacoom. Graduate of Pacific Lutheran University in Business Administration, Graduate Studies University of Washington. General contractor and real estate broker. Rotarian, Chamber of Commerce, former school board member. He and his wife, Jan, have five children.

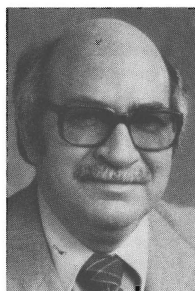


BROUGH, JEAN MARIE

Republican. Representative from 30th District, Federal Way, Vashon Island and parts of Pierce County including Northeast Tacoma, is serving her first term. Born in Washington, D.C. in 1942, graduated from Auburn University with Masters Degree in Mathematics. Former math teacher, long active as a community volunteer, presently a member Federal Way Chamber of Commerce, Highline Community College Women's Programs Advisory Committee, Federal Way City Committee and National Organization for Women. She and husband, Bill, have one daughter, Stephanie.

BURNS, WILLIAM L. (BILL)

Democrat. Representative from the 43rd District of King County is serving his fourth term. Born in 1927 in Brockwell, Arkansas. Attended University of Washington. Has been active in many community organizations. During 47th Legislative session served on Higher Education, Local Government, and Transportation Committees. He and his wife, Doris, have one daughter, Susan.



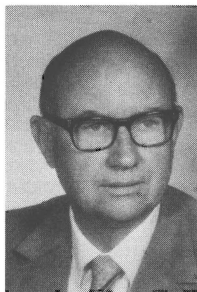
CANTU, EMILIO

Republican. Serving second term, represents the 41st District—Bellevue, Mercer Island, Issaquah, and N.E. Renton. A University of Texas graduate with Bachelor of Science degree, has been Engineering Design Manager for Boeing Company since 1962. A US Navy Veteran and Seattle Science Center Foundation Associate. Served as member of Bellevue School Board of Directors from 1973 to 1981, president in 1977. He and his wife have been residents of Bellevue since 1959 and have four children: Joe, David, Melissa and Sarah.

REPRESENTATIVES

CHANDLER, GLYN

Republican. Representative from Legislative District 13 comprising Adams, Grant, Kittitas, and Yakima County is serving his first term. Has owned and operated Grant County Tractor for 24 years. He has farmed and ranched in the 13th District and presently owns and manages a small apple orchard. Served on the Moses Lake School Board and is an active member of the First Baptist Church. He and his wife, Fran, have four sons and one daughter.

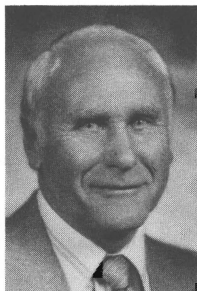


CHARNLEY, DONN

Democrat. Served twelve years in Legislature; 10 years in the House and 2 in the Senate. Due to redistricting, he has been elected again to the House and is representing new 1st Legislative District. He is Majority Whip and a Member of Rules, Transportation and Local Government Committees. Donn has been a professor of Geology at Shoreline Community College since 1966. He serves on Mental Health North and N.W. Kidney Center. Member of Richmond Beach Community Council and Geological Society of America. Donn is 54 and has five adult children.

CLAYTON, HAROLD R.

Republican. Is now serving his fourth term representing the 15th District. Born 1920 in Idaho. World War II veteran. Active in community affairs including Boy Scouts, ten years on Toppenish School Board. Thirty-one years diversified farming and businessman in valley area. Served fifteen years on Board of Directors of Central Washington Farms Crops Association. Three years on Board of Directors of Washington Asparagus Grower's Association.



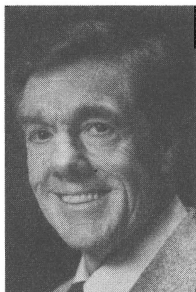
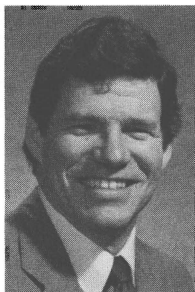
CRANE, ERNEST F.

Democrat. Representative from the 31st District which includes part of Kent, Auburn, Enumclaw, Black Diamond, Buckley, Wilkeson, and Carbonado, graduated B.A. from Iowa University and J.D. from the University of Michigan. He is a Veteran of World War II and the Korean War, and practices Law in Auburn. He and his wife, Susan, have three children.

REPRESENTATIVES

DELLWO, DENNIS A.

Democrat. Representative from Legislative District 3, including downtown area and a good portion of north part of City of Spokane, serving first term. Graduate, Gonzaga University with BA in History and Graduate, Arizona State University School of Law, JD, engaged in private practice of law in Spokane and is adjunct professor of law at Gonzaga School of Law. Member: Spokane Chamber of Commerce, Kiwanis, Knights of Columbus, Washington State Bar Assn., Washington State Trial Lawyers Assn., Spokane County Bar Assn. Member of Board of Directors of Riverview Juvenile Home.

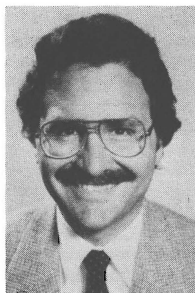


DICKIE, LYLE J.

Republican. Representative from Legislative District 15 of Yakima County. Graduate of Central Washington University and a retired school administrator. Owns and operates an apple orchard and is a former corporate officer. He and wife, Verna, have three children, Lylene, Dyke and Clay.

EBERSOLE, BRIAN

Democrat. Representative from 29th Legislative District of Pierce County, includes South Tacoma, Parkland and parts of Spanaway. Brian is serving his first term. Born in 1947, Brian is an educator. He received his bachelors degree from University of Tennessee and his masters degree from University of Connecticut. Currently doing graduate work at Pacific Lutheran University. Active in professional and civic organizations. Serves on Executive Board of Pierce County Democratic Party. Brian and his wife, Karen, have two sons, Michael and Brian Paul.



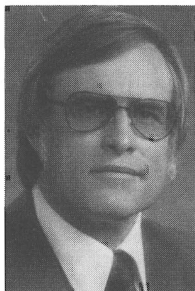
EGGER, LOUIS

Democrat. Representative from District 7 comprising Pend Oreille, Stevens, Ferry, Okanogan, Lincoln and N. Spokane Counties. Grad. of San Francisco Coll. of Mortuary Science, V. P. of Mt. Carmel Hosp. Foundation Assn., Board Member Foundation of Diocese of Spokane, Past Mayor of Colville, Past Pres. of Moser and Egger Funeral Chapel, Egger Furniture, Chamber of Commerce, Retail Trade, Colville Vly. Land Assn. and P.T.A. Past Board Member United Sec. Bank, City Library, Jr. Chamber, American Legion, Eagles, Kiwanis. Born in Chewelah, he and his wife, Helen, have 4 children.

REPRESENTATIVES

EHLERS, WAYNE, Speaker

Democrat. Representative from the 2nd District of Pierce and Thurston Counties, is serving his sixth term. Born in Bellingham in 1938, he is an educator. Graduate of WWSC (B.A. and B.S.) and the University of Denver (M.A.). Active in professional and civic organizations. He has two sons.



ELLIS, JERRY A.

Democrat. Representative from the 14th District of Yakima County. She is serving her first term in the House following ten years as Congressional staff director in Washington's Fourth District and two years as a law firm business manager. Member: Washington State Grange, Central Washington State Fair Advisory Committee on Volunteer Services, Friends of '47, and the Yakima Womens Political Caucus. She and her husband, Ed, have two children.

FISCH, RICHARD E.

Democrat. Representative from the 24th Legislative District, which is composed of Clallam, Jefferson and western Grays Harbor Counties. Has been on the faculty at Peninsula College since 1961, and has been active in Scouts, the Port Angeles Central Labor Council, United Way and the Peninsula College Faculty Association. He served in the U.S. Army from 1957 to 1959; was a member of the Clallam County Shorelines Advisory Committee and the State Teachers' Retirement Board. He and his wife, Janet, have a daughter (Lisa) and a son (Karl).



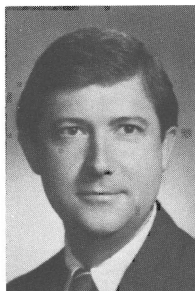
FISHER, RUTH

Democrat. Representative of the 27th District, Pierce County, consisting of North, and East Tacoma, Fife and Milton, serving her first term. Born in Tacoma, attended U.P.S. Chairperson, Pierce Co. Planning Commission. Has served on the County Ethics Code Committee, on the United Way Budget Review. She has two grown children, Steven and Joan.

REPRESENTATIVES

FISKE, PAT

Republican. First elected in 1980, represents the 40th District, comprising San Juan and parts of Skagit and Whatcom Counties. Born in Cleveland, Ohio, Graduate of Indiana University in Business Adm., has resided in Mount Vernon 8 years. Co-founder of home health care and hospice organizations. Past Pres., North Puget Sound Health Council, active in YMCA, United Way, Rotary Intl. and Chamber of Commerce. Member of Foundation for the Handicapped. He and his wife, Sally, own and operate an office interiors and supply business. They have three children, John, David, and Carrie.

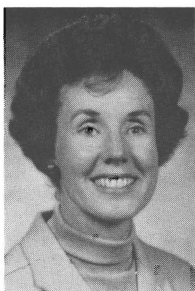


FUHRMAN, STEVE

Republican. Representative from Legislative District 7 comprising Ferry, Lincoln, Pend Oreille, Okanogan, Stevens, and part of Spokane Counties. Graduate W.S.U.; Viet Nam veteran with rank of Captain, U.S. Army; owns grain elevators and farm supply businesses in Colville Valley. Member National Grain Dealers Assoc., Washington Cattlemen's Assoc., Assembly of God Church. Born in Washington; he and his wife, Susan, have 4 children: Carolyn, Damon, Brad, and Christa.

GALLAGHER, P. J. (JIM)

Democrat. Representative from the 29th District of Pierce County, is serving his 12th term. Born in 1915 in Taylor, Washington. Graduate, Washington State University. Member, Knights of Columbus and Eagles. He and his wife, Mabel, have six children.



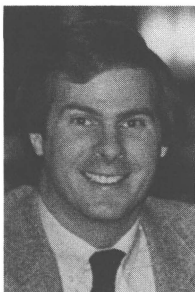
GALLOWAY, SHIRLEY A.

Democrat. Representative from the 49th District, Vancouver. Third term House member, serving as Chair of Education Committee and on Agriculture and Financial Institutions & Insurance Committees. She serves on the State Council on Child Abuse, and on HOSTS, SWARF, Business for Arts, Salvation Army Boards; School Mgmt. Task Force and Citizens for Good Schools. Attended Clark College (A.A. & S.), The Evergreen State College (B.A.). She and her husband, Wayne, have five children.

REPRESENTATIVES

GARRETT, AVERY

Democrat. Representative from 11th District of King County, serving his ninth term. Born in Georgia in 1916. Previously served as Caucus Chairman, Speaker Pro Tempore and Mayor of Renton. He and his wife, Edna-May, have a son, three daughters and one grandson and one granddaughter.

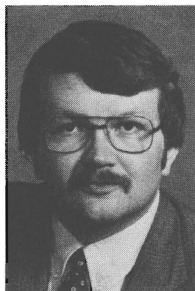


GRIMM, DANIEL K

Democrat. Representative from the 25th District of Pierce County, comprising areas of Sumner, Puyallup, Bonney Lake, Midland, Lake Tapps and South Prairie. Serving his fourth term, Dan is currently Chairman of the House Ways and Means Committee, past Chairman of Democratic Caucus and former Chairman of Higher Education Committee. A graduate of Columbia University and Puyallup High School, Dan is a life long resident of Puyallup. He is currently self employed in the air freight industry and is active in numerous civic organizations.

HALSAN, STUART

Democrat. Representative from Legislative District 20 comprising all of Lewis, and part of Thurston County, is serving in his first term. Graduate of University of Washington School of Business Administration, and Gonzaga University School of Law, is a private attorney in Centralia. Member Sons of Norway, International Association of Arson Investigators, Washington State Trial Lawyers and Centralia Eagles. Past President of the Chehalis Jaycees. A Washington native; he and his wife, Kathy, have one son, Nathan.



HANKINS, SHIRLEY W.

Republican. Representative from Legislative District 8, Benton County. Shirley is serving her second term. She is a member of the American Nuclear Society-Richland Section, Columbia Chapter of Health Physics Society, Association of Records Managers and Administrators, Energy Advocates, Tri-City Technical Council, Richland Fed. Women's Clubs, Business and Professional Women's Club, Richland Republican Women. Widow of Myron McFadden Hankins Sr.; one son, two daughters, one daughter-in-law, one grandson.

REPRESENTATIVES

HASTINGS, RICHARD 'DOC'

Republican. House Republican Caucus Chairman. Member, Rules Committee. Representative from the 16th District which includes Walla Walla and parts of Franklin and Benton counties. He is serving his third term in the House. Born in Spokane in 1941; is in the institutional paper and janitorial supply business. Is past president of Pasco Chamber of Commerce; member of Rotary International, and past member of Jaycees. He and his wife, Claire, live in Pasco, and have three children, Kristen, Petrina and Colin.

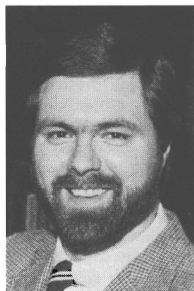


HAUGEN, MARY MARGARET

Democrat. Representative from District 10, comprising Island and parts of Snohomish and Skagit Counties, is serving first term. Owner of a small business. Served 3 terms on Stanwood School Board, V.P. Camano Homeowners Assoc., Island County Trans. Planning Committee, Washington State School Directors Resolution Committee, Community Ed. Advisory Council. Member: League of Women Voters, M.A.D.D., Greater Marysville Bus. and Prof. Women, Eastern Star. Born in Washington, native of District 10, she and husband, Jerry, have four grown children.

HECK, DENNIS L.

Democrat. Majority Leader; Member, Rules Committee; Minority Floor Leader (1981-83); Chairman, Education Committee (1979-81); Chairman, Basic Education Subcommittee (1977); Representative from 17th District, comprising Skamania, Klickitat and part of Clark Counties. He and his wife, Paula, live in the Evergreen area of Clark County. He is the owner of Dennis L. Heck & Associates, Public Relations and Advertising.



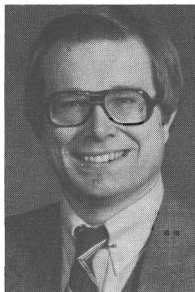
HINE, LORRAINE

Democrat. Representative from the 33rd District, Des Moines, Normandy Park, Sea-Tac Airport, parts of Federal Way and Burien. Serving her second term, chairs the Democratic Caucus. Born in Timberlake, South Dakota and raised in South King County. Graduate of WSU with B.A. in Speech/Education. Three term Mayor of Des Moines, past president of the Puget Sound Council of Governments. She and her husband, William, have six children.

REPRESENTATIVES

HOLLAND, J. BRUCE

Republican. Representative from Legislative District 47 in eastern King County is serving his first term. Graduate from the University of Washington with Bachelor and Master degrees in Economics, specializing in Public Finance and Taxation, he is employed as a budgeting and financial controls manager. Born and raised in King County, he has served as a director of several organizations; Fairwood West Homeowners Association, Mothers Against Drunk Drivers (MADD), and the Boeing Employees Tennis Club. He and his wife, Marcia, have two sons who attend Renton Public Schools.

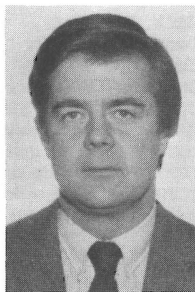


ISAACSON, RAY (RAYMOND E.)

Republican. Representative from the 8th District, is serving his third term. Born in Superior, Arizona in 1928. A graduate of the University of Washington in Chemical Engineering. He has a broad background and extensive experience in nuclear engineering, and expert knowledge on nuclear wastes in the environment. He is Senior Engineering Advisor, Rockwell Hanford Operations. He and his wife, Evelyn, have four children, Erick, Vincent, Wanda and Carl.

JACOBSEN, KEN G.

Democrat. Representative from the 46th District, Northeast Seattle, serving his first term. Serves on Environmental Affairs; Energy and Utilities; Constitution, Elections & Ethics Committees and Vice Chair of the Higher Education Committee. Raised in Northeast Seattle and a Graduate of the University of Washington in History. Director Puget Consumers Co-op, Member Group Health Home Advisory Board, and Disabled American Veterans. He and his New Zealand wife, Rachel, have two daughters.



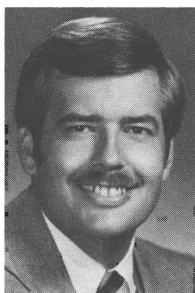
JOHNSON, STANLEY C.

Republican. Representative of the 28th District, comprising Lakewood, Tillicum, University Place, Fircrest and Steilacoom. Resident of the district 16 years. President/Owner of Gerrish Bearing & Industrial Supplies, Inc., for the past 25 years. Former Chairman of the Clover Park School District's Board of Directors. Formerly, National President of North American Baptist General Conference. Presently Certified Professional Parliamentarian, American Institute of Parliamentarians. He and his wife, Anita, have four children, Mark, Tim, Kris and Andy.

REPRESENTATIVES

KAISER, DUANE L.

Democrat. Representative from 2nd District comprising part of Pierce and Thurston Counties. Veteran of W.W. II. Graduate of W.S.U. with a B.S. and O.S.U. with M.S. Former Voc. Agriculture and Industrial Ed. Instructor. He is active in professional organizations and civic affairs. Sponsored a local soccer and softball team. Has served on Agriculture, Approp. Gen. Gov. and State Gov. Committees, and Winter Rec. Commission. He and his wife, Kay, have owned and operated the Green Branch Ranch Christmas Tree farm in the district since 1962. They have two children and two grandchildren.



KING JOSEPH E.

Democrat. Representative from the 49th Legislative District comprising City of Vancouver and part of the rest of Clark County, serving his second term. B.A., Linfield College, M.A. Western Kentucky University, owns and operates an independent insurance agency. Member various professional and civic group organizations and active community volunteer. Serves on Commerce & Economic Development (Chairman); Social & Health Services, and Ways & Means committees. He and wife, Chris, have three children.

KING, PAUL

Democrat. Representative from District 44 comprising Snohomish and part of King County, is a 20-year resident of South Snohomish County and self-employed as attorney in private practice. Paul served on Mountlake Terrace City Council (1979-83). He resides in Mountlake Terrace, where he was raised and attended public schools. Graduated from Western Washington Univ. in 1972 and received his Juris Doctorate from Univ. of Puget Sound Law School in 1976. He has served as community law instructor, legal counsel for Seattle-King Jaycees and arbitrator for Better Business Bureau.



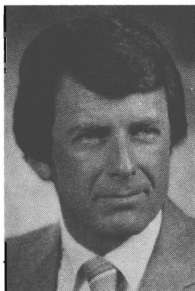
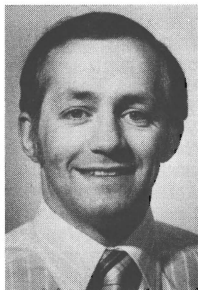
KING, RICHARD

Democrat. Representative from the 38th District of Snohomish County; he is now serving his tenth term and has served as Majority Floor Leader and Minority Leader. He is currently Vice President of the Democratic State Legislators of the United States. Graduate University of Washington with B.A. and M.A. degrees, teaches speech and parliamentary procedure at Everett Community College. He and his wife, Mary, have four children.

REPRESENTATIVES

KREIDLER, MYRON "MIKE"

Democrat. Representative from the 22nd District located in Thurston County and includes the state capitol. Elected in 1976 to the House. Born in 1943 in Tacoma. Graduated from Curtis H.S., Pacific University and the University of California at Los Angeles. He is a Group Health optometrist and with his wife, Lela, and their three children, lives in Olympia.

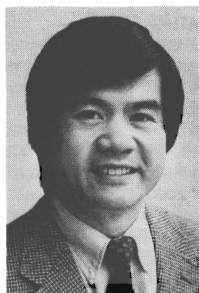


LEWIS, JIM

Republican. Representative from District 14 comprising City of Yakima, parts of Selah, Naches and West Valley, serving his second term. Fourteen years as a radio and television news director, most of that time in the Yakima area. A member of Rotary and a volunteer with many organizations including KYVE TV, the local PBS affiliate. Born in Bakersfield, Calif. and attended school in Newhall, Calif. Jim, his wife, Lenore, and their two children attend the West Valley Church of The Nazarene. Jim is the owner of a Public Relations and Advertising Firm in Yakima.

LOCKE, GARY F.

Democrat. Is serving first term and represents District 37 which encompasses southeast Seattle. Gary was a Dep. King County Prosecuting Atty. and most recently was Legal Advisor with Seattle Human Rights Dept. During the 1981 Session, he was attorney for Senate Higher Ed. Committee and an editor of Senate Bill Reports and 1981 Legis. Report. A Seattle native, Gary received an A.B. degree from Yale Univ. and law degree from Boston Univ. Memberships: Citizens' Ed. Center Northwest, Ntl. Trust for Historic Preservation, and Asian Americans for Political Action.



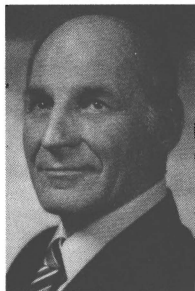
LONG, JEANINE

Republican. Representative from District 44, comprised of S. Snohomish and N. King County, serving first term. Grad., Univ. of Washington (B.A., Psychology 1977). Member, Snohomish Co. PUD Citizens Rate Adv. Committee; V.P., Mill Creek Community Assn. Past PTA Pres., Brier City Cnclmem. and Mayor pro tem, V. Chair, Community Transit, Sno-Com, Puget Sound Council of Gov. (Snohomish Co.), Standing Comm. on Trans. (SCOT), Ntl. League of Cities Communications, Trans. and Public Safety & V. Chair, HUD Policy Board/Block Grant Funds, Snohomish Co. Mother of five grown children, lives in Mill Creek with husband, Ken, a Seattle architect.

REPRESENTATIVES

LUX, EUGENE

Democrat. Representative from the 11th District of King County, comprising Rainier Beach, Bryn Mawr, Lakeridge, Skyway, Renton, Tukwila, North Kent and the industrial Green River Valley. Served interim Senate appointment, 1973, elected to the House 1975, 76, 78, 80, 82. Born in Lincoln, Nebraska, 1926, a self-employed building contractor in South King County for 36 years. Member of the Governor's Employment and Training Council. Active in community affairs and consumer cooperatives. Married and has three daughters.



MARTINIS, JOHN

Democrat. Representative from the 38th District of Snohomish County, serving his eighth term. A lifelong resident of the 38th District, born in 1930 in Everett. Chairman of House Transportation Committee. Member of House Natural Resources and House Energy & Utilities Committees. Self-employed.

McCLURE, BARNEY

Democrat. Representative from Legislative District 24 which includes all of Clallam and Jefferson Counties and the western portion of Grays Harbor County, including the cities of Port Angeles, Port Townsend, Sequim, Forks and Hoquiam. Mayor of Port Townsend since November 1979 and resigned to become full-time legislator upon taking office January 1983. He is a member of Chamber of Commerce, Rotary, American, Board of Trustees of Food Banks. Wife Ann and Barney have two daughters, Willow and Rachel.



MCDONALD, DAN

Republican. First elected in 1978, represents Bellevue, Kirkland and Redmond area of King Co. He and his wife, Janie, and two sons have lived in Bellevue for 13 years, since his return from tour as Naval Off. in Viet Nam. He is a graduate in mech. engineering from the Univ. of Washington and has masters degree in economics. Presently employed with a consulting firm. He is active in the Municipal League, Bellevue Chamber of Commerce, American Public Works Assn. and Seattle Chamber of Commerce. Appointed a member of LEAP Committee.

REPRESENTATIVES

McMULLEN, PATRICK "PAT"

Democrat. Serving 40th District comprising Western Skagit, Southern Whatcom and San Juan Counties. Graduated from University of Washington with B.A. in Political Science followed by a J.D. Degree in 1969. Served as Asst. Attorney General, twice elected Prosecuting Attorney for Skagit County, now engaged in private practice specializing in Worker's Compensation claims. Served as ex-officio member of House-Senate Joint Committee on Worker's Compensation representing the Bar Assn., Member WSTLA.



MILLER, LOUISE

Republican. Representative from Legislative District 45, Northeast King County. Serving first term. Graduate of San Jose State University, B.A. in Music and teaching credential. Past President, Woodinville Community Action Council, P.T.S.A., Water District #104. Member Chamber of Commerce, A.A.U.W., State Associations of Water & Sewer Districts and Conservation Districts. She and her husband Stafford have two grown children.

MITCHELL, JAMES B.

Republican. Representative from District 39-A comprising east Snohomish County and South Everett. He is serving his third term, is a self-employed pharmacist, a graduate of University of Washington and veteran of World War II. He is a founder of the Snohomish County Blood Bank, a director on the Board of Providence Hospital, a past director of the Stillaguamish Senior Citizen Center and a past member of the Washington State Board of Pharmacy. He and his wife Nancy, have two sons, Bill and John and two grandchildren.



MONOHON, CAROL

Democrat. Representative from District 19B comprising Pacific and part of Grays Harbor and Wahkiakum Counties. Born in 1945 in Raymond. First elected in 1976 to the House, appointed to the Senate in 1977, returned to House in 1979. Graduate of Grays Harbor College and U.P.S. with a B.A. in Political Science. Attended U.P.S. Law School. Carol, her husband, Robert, their two children, Bryon and Sharron, live in Raymond.

REPRESENTATIVES

MOON, CHARLES

Democrat. Representative from District 39B. Previously served in legislature 1962-1976. Self-employed veterinarian, a graduate of W.S.U. and presently a member of the Washington State Board of Veterinary Governors. He and his wife, Ellen, have 3 sons.

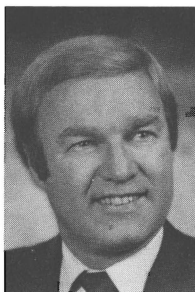


NEALEY, DARWIN R.

Republican. First term Representative from District 9, comprising Asotin, Columbia, Garfield, Whitman and parts of Adams and Franklin Counties. Graduate of WSU, B.S. Ag. Eng., Alpha Gamma Rho. Served 59 mos. Army Eng. WW II, Engineer 1½ yrs. with Bur. of Reclam. and Farmed 1948-1978, semi-retired since 1978. Member or past member of WA Cattlemen's Assn., WA Assn. Wheat Growers, Grange, Farm Bur., WA Assn. Soil & Water Conserv. Dist., PM Masonic Lodge and LaCrosse Methodist Church. He and wife, Evelyn, have five grown children.

NELSON, R. P. "DICK"

Democrat. Representative from 32nd District comprising Ballard, Fremont, Green Lake, Greenwood, Phinney, University, and Wallingford neighborhoods of Seattle. First elected in 1976, is serving fourth term in the House. Chairs Energy and Utilities Committee, and is member of Higher Education and Ways and Means Committees. Native of Seattle. Graduate of Univ. of Washington (Engineering) and Massachusetts Institute of Tech. Self-employed tech. consultant. Board member of Wallingford Senior Center, NW Youth Service Bureau, and Community Psychiatric Clinic.



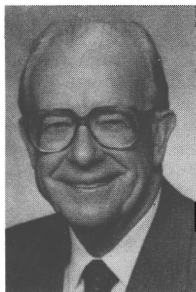
NELSON, GARY A.

Republican. Republican Leader from District 21 of Snohomish County (part), serving sixth term. Born and raised in Spokane, received B.S. in Electrical Engineering from W.S.U. and M.S. from U of Wisconsin. Former Air Force officer. Staff Manager with private utility. Director in Ntl. Conference of State Legislators, Board of Luther Child Center, Board of Snohomish County Boys Club. Past Edmonds City Cnclman and planning commission member. His wife, JoAnne, is an educator author; they have three sons, Grant, Geoff and Greg.

REPRESENTATIVES

NIEMI, JANICE

Democrat. Representative from Legislative District 43; Capitol Hill, the University of Washington, and the Central Area in Seattle. Lawyer, B.A., University of Washington, Graduate School, University of Michigan, J.D. University of Washington. Former Superior Court Judge and Acting General Counsel of the Small Business Administration in Washington D.C. Husband, Preston, is a lawyer, they have a son and daughter.

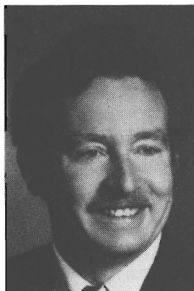


O'BRIEN, JOHN L.

Democrat. Representative from 37th (redistricted from 35th) District of King Co., serving 21st term. Caucus Chairman in 1951, Minority Floor Ldr. 1953, Speaker of the House 1955 to 1962, Democratic Floor Ldr. 1963, Majority Ldr. 1965, Minority Ldr. 1967-1971 and Speaker Pro Tempore 1973-1980. Democratic Parliamentary Ldr., 1981. Graduate of business college, attended Western Institute of Prof. Accounting and is a CPA. Past pres. and member of Exec. Committee of Ntl. Conference of State Legislative Leaders. Member, Knights of Columbus, Washington Athletic Club, and Rainier Chamber of Commerce. He and wife, Mary, have six children.

PADDEN, MIKE

Republican. Representative from Legislative District 4, comprising Spokane Valley, and Eastern Spokane County. Graduate, Gonzaga University with a Degree in Political Science, and also a graduate of Gonzaga School of Law. He is a practicing attorney, and a member of Spokane County Bar Association, Washington State Bar Association, Spokane Valley Chamber of Commerce, and the Spokane Valley Knights of Columbus. Mike and his wife, Laura, have three boys, Justin 4 years, Shaun 2½ and Andy 9 months.



PATRICK, MIKE

Republican. Representative from District 47 comprising the suburban areas of Renton, Kent, Issaquah and east of Lake Sammamish, serving his second term. He is a 17-year veteran of the Seattle Police Dept. and a past President of the Seattle Police Officers Guild. Mike has chaired sub-committees on State Highways, Ethics, and Dental Hygienists and was vice-chairman of Labor & Economic Development. Mike and his wife, Lois, have four children, Michael, Jeffrey, Shanna, and Jennifer.

REPRESENTATIVES

POWERS, CAROLYN

Democrat. Representative from District 26, serving first term. District comprises South Kitsap County, that part of Pierce County across Narrows Bridge on Olympic Peninsula, and part of City of Tacoma. Six years Board of Trustees Olympic Community College (two as Chairman); League of Women Voters; Business and Professional Women; Kitsap County Municipal League; Cancer Crusade Chair; six years Washington State Democratic Committee. Florida native, 36 years Washington; she and husband, Paul (Mayor of Port Orchard), have two daughters and two grandchildren.



PRINCE, EUGENE A.

Republican. Representative from District 9 comprising Asotin, Garfield, Columbia, Whitman and parts of Adams, and Franklin, is serving second term as a Legislator. He first served in '59 as a Bill Clerk, '63 as Asst. Chief Clerk, '65 as Comm. Clerk, '67, '69, '71 as House Sgt. at Arms. Graduate WSU with B.S. in Ag. Eng., is engaged in farming. Member: Grange, Wash. Assn. Wheat Growers, Farm Bureau and Chamber of Commerce. Served as President of Wash. Assn. of Wheat Growers. He and wife, Patsy, have two sons, two daughters and five grandchildren.

PRUITT, PAUL

Democrat. Representative from the 34th District, King County serving his third term. He was born in Shelton, Nebraska and is a graduate of the University of Puget Sound and Yale Divinity School. He is Chairman of the Constitution, Elections and Ethics Committee. He and his wife, Mary Margaret, live in Seattle.



RISTUBEN, OLIVER

Democrat. Represents District 18, located in Clark and Cowlitz Counties. Appointed to the House in 1983. Born in 1936 in Black River Falls, Wisconsin and moved to Centralia in 1947. Graduated from Centralia High School and Pacific Lutheran University. He is a teacher and lives in Woodland.

REPRESENTATIVES

RUST, NANCY S.

Democrat. Representative from the 1st District in northwest Seattle and King County, is serving her second term. She was born in Iowa City, Iowa and earned a BA and MS in mathematics at the University of Iowa. She has served as Vice President of the League of Women Voters, Board member of the Municipal League, Trustee at Shoreline Community College and as a Girl Scout Leader. Nancy and her husband, Dick, have six grown children and one granddaughter.

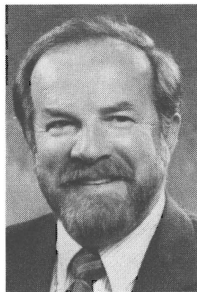


SANDERS, PAUL

Republican. Represents 48th District, King County. Serving fourth term. Active in Bellevue community 24 years. Co-founder, Wash. Aviation Council; Director, Helping Hands for Disabled; Rotary; Church of Resurrection; Federated Community Clubs; PTA Council; Wash. State Civil Air Patrol Advisory Council; Boeing executive. Member Financial Institutions & Insurance, Natural Resources, Transportation and Joint Select International Trade Committees. He and his wife, Helen, have four children.

SAYAN, DOUGLAS E.

Democrat. Representative from Legislative District 35 comprising all of Mason, Eastern half of Grays Harbor and parts of Kitsap and Thurston Counties. Is serving his first term. Has Bachelor and Master's degrees from University of Washington. Is a retired State Agency Director, former School Board member and member of numerous business, civic and fraternal organizations; V.F.W., Grange, American Management Association. A navy veteran, he is a widower with three grown children and three grandchildren.



SCHMIDT, KAREN

Republican. Representative from District 23, Kitsap County from Hansville through part of Bremerton including Bainbridge Island. Serving second term. Attended Arizona State Univ. and worked for various airlines prior to opening her own agency—Go Travel. Has been active in civic groups including past pres. of Bainbridge Chamber of Commerce, sec.-treas. North Olympic Chamber of Commerce and others which led to being named "Rotary Woman of the Year 1979." Lives on Bainbridge Island with husband, Gary, a Capt. in Merchant Marine, and sons, Geoffrey and Gavin.

REPRESENTATIVES

SCHOON, DICK

Republican. Representative from Legislative District 30, covering Southwestern King County, parts of Pierce County and Vashon Island. Serving first term after nine years on the Federal Way School Board. Graduate of University of Puget Sound with a degree in Business Administration and a Marketing Major. Member of Trinity Reformed Church, King County Directors Association, Wash. State School Directors Association and the Federal Way Chamber of Commerce. Veteran—served in U.S. Army. He and his wife, Peggy, have two sons and a daughter.

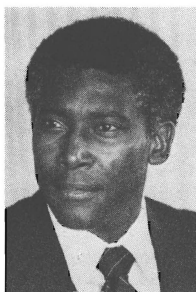
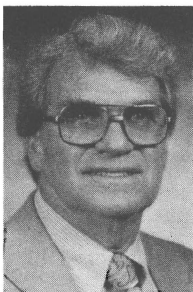


SILVER, JEAN

Republican. Representative from fifth District of Spokane County. Graduate of Eastern Washington University with a degree in Business Administration, Accounting. A Certified Public Accountant, she is currently a contract consultant to the City of Spokane in organizing an economic development financial program. Serves on various community and state committees dealing with students, juvenile court, and future Spokane. She and her husband, Charles, have three sons and are lifelong residents of Spokane.

SMITH, CURTIS P. "CURT"

Republican. Representative from the 13th District comprised of parts of Grant, Kittitas, and Yakima Counties, serving his third term. Born in Nebraska, attended University of Nebraska, Veteran of WW II, farmer in the Columbia Basin since 1955 and Irrigation Director twenty years for Quincy Columbia Basin Irrigation District. Member of United Church of Christ. He and wife, Lucille, have two children, both University graduates. In the past, Curt served on the Agriculture, Labor and Transportation Committees.



SMITHERMAN, BILL

Democrat. Representing 26th District comprised of parts of Kitsap and Pierce Counties is serving first term. Graduate of Langston University with B.A. in Sociology graduate work at University of Washington School of Urban Planning, is a management and planning consultant. Member: Board of Directors Fircrest Kiwanis; Board of Directors D.A. Gonyea Boys Club; Board of Directors Metropolitan Development Council, Tacoma Urban League, Holy Cross Catholic Church. He and his wife, Karen, have two daughters.

REPRESENTATIVES

SOMMERS, HELEN

Democrat. Representative from the 36th District in Seattle, serving her sixth term. Earned B.A. and M.A. in economics from University of Washington. Employed by King County Council. Member: Seattle Economists Club, League of Women Voters, Consumer Credit Counseling Board Member, Univ. of Wash. Visiting Committee.

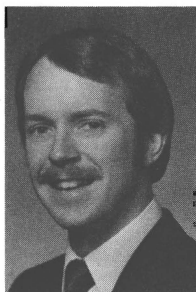


STRATTON, LOIS J.

Democrat. Representative from 3rd District in Spokane. Appointed in 1979, serving second term. Born in Springdale in 1927, 33 year resident of District. Retired from Kaiser Alum. Public Rel. and community volunteer 25 years. Serves on Boards of W. Central Comm. Center, Daybreak of Spokane, Spokane Substance Abuse Cncl., Retired Senior Volunteer Prog., Community Pers. Guid. Brd. for Alcohol Treat., Inland Empire Heart Assn., Mem./Cent. II and Comm. of 100, Future Spokane, and Friends of Rvfrnt Prk. Elected WA. Women and Ntl. Order of Women Legislators. She and husband, Al, have five grown children.

STRUTHERS, GENE

Republican. Representative from the 16th District comprising Walla Walla County, part of Franklin and Benton Counties. Serving his fourth term. Republican Caucus Whip; a member of House Rules and Ways and Means Committees. A World War II veteran, born in Walla Walla. Retired businessman with dryland farming interest. Gene and his wife, Bonny, have five grown children. A member of Rotary, past president Walla Walla Chamber of Commerce and Board of Directors School District #140.



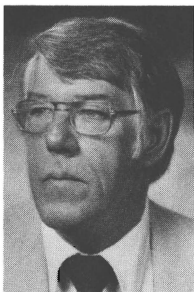
SUTHERLAND, DEAN A.

Democrat. Representative from District 17, comprising Skamania, Klickitat, and S.E. Clark Counties, serving first term. As an electrician and welder, he is also involved in construction and property mgmt., and owns agricultural business dealing with an orchard and apiary. Having served as a labor negotiator and a leader on major construction sites, he has traveled the world working with governments of developing countries on construct. projects. Dean lives in Clark Co. with wife, Roxane, and two children.

REPRESENTATIVES

TANNER, JOE

Democrat. Representative from Legislative District 18, comprising parts of Clark and Cowlitz Counties. Graduate Harvard University with a B.A. in Economics, and the University of Texas with a degree in law. Vice-President of Finance and part owner of U-Cart Concrete Systems, Inc., and equipment manufacturer. Member: Washington State and Clark County Bar Association, Kiwanis Club and Grange; he and wife, Sharyn, have two children, Kristen Amanda, 5, and Justin Joseph, 3.

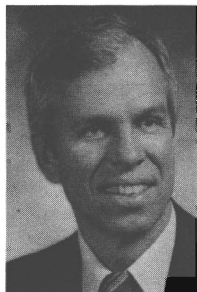


TAYLOR, REN

Republican. Representative from the 4th District serving his third term. Assistant Minority Floor Leader, member of Rules and Ways and Means committees. A native of Washington; veteran of World War II; graduated from University of Washington and received MA from Columbia University. Taylor is a member of Board of Trustees of Spokane Valley General Hospital and St. Luke's Hospital. He and his wife, Virginia, live in Spokane and have two grown sons.

TILLY, EARL F.

Republican. Representative from District 12, is serving sixth term. Member of Ways and Means, Judiciary, and Commerce and Economic Dev. Committees. He is Minority Ranking Member of Ways and Means Revenue Subcommittee. V. Chair. of Organized Crime Intelligence Adv. Committee. Former owner Tilly Equip. Inc. Graduate of the U. of W. in Business Admin. Attended Pac. Lutheran Univ. and Wenatchee Vly. College. Member of Wenatchee Rotary Club and Grace Lutheran Church. He and wife, Barbara, live in Wenatchee with their three children, Kristen, Bart and Shannon.



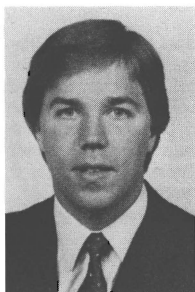
TODD, MIKE

Democrat. Representative from new 31st District—Auburn, half of Kent, Enumclaw, Black Diamond and Buckley. Director, Residential Heating and Cooling Contractors; chair, Energy Code Conserv. Committee of State Bldg. Code Adv. Council. Active in Democratic Party; pres. of Lake Heights Community Council, founding member of prog. for prevention of juvenile crime; trustee, Wabash Presbyterian Church; former broadcast journalist. V. Chair of Energy & Utilities, serves on Local Gov. and Agric. Committees. Resides near Auburn with wife, Geri, and daughter, Shannon.

REPRESENTATIVES

VAN DYKEN, ROGER L.

Republican. Representative from the 42nd District in Whatcom County, serving his third term. Owner of a sailboat sales and charter business, management services agency, and a farm. Has served in Air Force in Vietnam and Europe, currently Major in Air Force Reserve. Born in 1945, he and his wife, Marlene, have four children, Aminta, Justin, Daniel, and Jonathan.

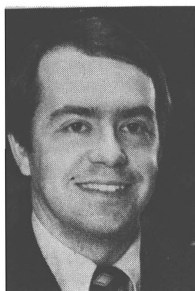
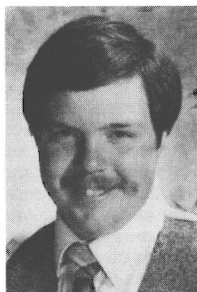


VANDER STOEP, J.

Republican. Is serving his second term, as a representative from the 20th District which includes Lewis and western Thurston counties. Vander Stoep is a registered securities representative with InterPacific Investors. He is a member of the Centralia Kiwanis club and the Westminster Presbyterian church in Chehalis. Born in 1957, Vander Stoep is a graduate of Western Washington University.

VEKICH, MAX

Democrat. Representative from the 35th District, including Mason County, Eastern Grays Harbor, West Bremerton and Mud Bay. Representative Vekich, his wife, Ivy, and son, Peter, live in Grays Harbor. Born and raised in Aberdeen, he graduated from Grays Harbor College and the University of Puget Sound with a BA in Political Science. He is a longshoreman employed by the Pacific Maritime Association. He is involved in the YMCA Board, Lions Intl., Peoples Foodbank, Ducks Unlimited and Beta Theta Pi.



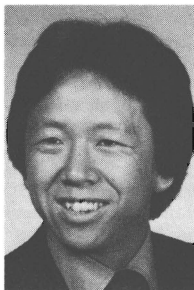
WALK, GEORGE W.

Democrat. Representative from the 25th District in north central Pierce County. Serving his fourth term. Born in 1949 in Puyallup, attended Puyallup public schools and earned B.A. and M.A. degrees from Western Washington State College. Teaches history and government at Spanaway Lake High School. He and his wife, Jill, have three children.

REPRESENTATIVES

WANG, ART

Democrat. Representative from the 27th District, Pierce County. Serving as Assistant Majority Leader in his second term in the House. Born in Boston in 1949. Graduated Franconia College, N.H. Former VISTA volunteer for Tacoma Urban League; director of job training programs, Tacoma Community House; grants consultant, United Methodist Church; instructor in Urban Studies, U.P.S. Also served four years as Legislative Research Analyst. Currently enrolled in U.P.S. Law School.

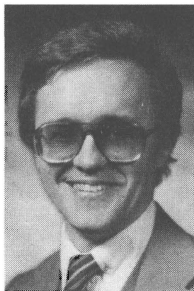


WEST, JAMES

Republican. Representative from Legislative District 6 comprising part of the City of Spokane and the Southwest portion of Spokane County including the City of Cheney and the Town of Medical Lake, is serving his first term. Graduate of Gonzaga University with a B.A. in Criminal Justice. Currently is a licensed Realtor and is a past Spokane City Councilmember.

WILLIAMS, BOB

Republican. Representative from District 19A comprising Cowlitz and Wahkiakum Counties. He is serving his third term in the House. Member of the Legislative Budget Committee. Certified Public Accountant. Member of the Longview Rotary Club, Toastmasters and Calvary Community Church. He and his wife, Jane, have three sons, Robbie, Kevin and Michael.



WILLIAMS, JOSEPH L.

Republican. Representative from District 41 comprising Mercer Island, southern part of Bellevue, part of Renton and Issaquah, all in King County, is serving first term. He is an alumni of Univ. of Washington and holds B.A. in Architecture, currently engaged as Construction Consultant following active practice as Architect. Trustee of the Central Washington Univ. Foundation serving on Grants and Investment Committees. Member Ntl. Chamber of Commerce, Ntl. Fed. of Independent Business, Assn. of Washington Business. He and wife, Carol, have a daughter and three sons.

REPRESENTATIVES

WILSON, SIMEON R. "SIM"

Republican. Representative from the 10th District of northwest Snohomish County, Island County, and south and east Skagit County. Elected in 1972 to his first term, re-elected, 1974, 1976, 1978, 1980, 1982. Born in Hood River, Oregon, in 1927. Attended Everett Community College; B.A., Washington State University; M.F.A., University of Washington. Served in the U.S. Navy 1945-46, 1951-54. Publisher of the *Marysville Globe and Arlington Times*.

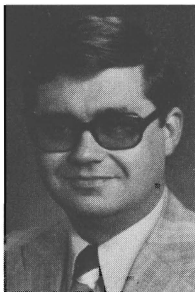


ZELLINSKY, PAUL, SR.

Democrat. Representative from Legislative District 23 comprised of most of Kitsap County, is serving his first term. Attended U.W., Graduate S.U. with a degree in Business. Born in Seattle, and a resident of Kitsap County for over twenty years. Owner of an Automobile dealership in Bremerton. Member; Chamber of Commerce, Board member; Navy League, Past member; Olympic Peninsula Enterprises, and County Planning Commission. He has two children and lives with wife, Joanne, in Silverdale.

FOSTER, DEAN R.

Democrat. Chief Clerk of the House of Representatives serving his fifth term. Worked as an employee in the Senate from 1959-1965 and in the House since 1972. Born in 1941 in Yakima. Attended Western Washington State College and graduated from University of Washington with a degree in Political Science. Served in the United States Air Force as an Intelligence Officer. He has three sons, David, Mike and Scott.



YOUNG, ROSS

Democrat. Sergeant at Arms of the House of Representatives serving his third term. Has been employed by Legislature since 1971. Born in Cle Elum. Attended Central Washington State College. Served 20 years in the United States Air Force, retiring as a Senior Master Sergeant in 1969. He and his wife, Mary, live in Olympia.