

A black and white photograph of the interior of the Washington State Capitol dome. The image shows the grand architecture with a large arched window on the right, a balcony with a railing in the middle, and a lower level with columns and people. The floor is covered with a patterned carpet, and there are stanchions with ropes in the foreground.

Fifty-seventh  
Washington State  
Legislature

# 2001 Pictorial Guide

---

## Table of Contents

---

Introduction . . . . .	1
State Elected Officials . . . . .	3
Roster of Members, Senate . . . . .	7
President of the Senate . . . . .	9
Senate Biographies . . . . .	10
Senate Administration . . . . .	24
Roster of Members, House of Representatives . . . . .	25
Co-Speakers of the House . . . . .	29
House of Representatives Biographies . . . . .	30
House Administration . . . . .	55
Americans with Disabilities Act . . . . .	56
How A Bill Becomes A Law . . . . .	57
Visitors Tour Information . . . . .	58
State Capitol Parking Information . . . . .	59

## Introduction

This Legislative Handbook of the Fifty-seventh Legislature for the 2001 session contains pictures and biographical material on state elected officials and members of the Senate and House of Representatives. Additionally, there are sections of the handbook on Americans with Disabilities Act, how a bill becomes law, parking and tour information, and a campus map.

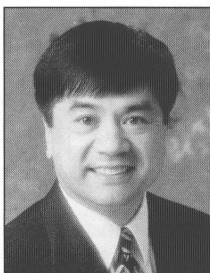
This handbook is prepared by the Senate and the House of Representatives to assist those interested in becoming better acquainted with their statewide elected officials, legislators and the legislative process in our state.



---

## State Elected Officials

---



**GARY LOCKE**  
**Governor**

Gary Locke was elected Washington's 21st governor on November 5, 1996, making him the first Chinese-American governor in U.S. history. As governor, he has worked to make Washington public schools the best in the nation, promote jobs and economic development in rural and urban areas, and fight juvenile crime.

Born into an immigrant family on January 21, 1950, Gary spent his first six years in Seattle's Yesler Terrace, a public housing project for families of World War II veterans. His father, James Locke, served in the 5th Armored Division of the U.S. Army under General George Patton and landed on the beaches of Normandy shortly after D-Day. Following the war, James Locke met his wife, Julie, in Hong Kong and settled in Seattle, where they raised their five children.

Gary worked in his father's grocery store. He worked hard, became an Eagle Scout, and graduated with honors from Seattle's Franklin High School in 1968. Then, through a combination of part-time jobs, financial aid and scholarships, Gary attended Yale University, where he received his bachelor's degree in political science in 1972. After earning a law degree from Boston University in 1975, he worked for several years as a deputy prosecutor in King County, prosecuting people for crimes such as robbery and murder.

In 1982, Gary was elected to the Washington State House of Representatives, where he served on the House Judiciary and Appropriations committees, with his final five years as chairman of the House Appropriations Committee. As chairman, Gary negotiated bipartisan budgets that increased college and university enrollments, improved children's health-care services, and strengthened environmental protections.

Gary was elected chief executive of King County in 1993 and took on all of the challenges facing Washington's most complex urban area. During his term, he cut the budget, expanded transit services, established a program to reward county departments for saving money, and developed a nationally acclaimed growth management plan.

As governor, Gary has worked to make Washington a better place to live, work, and raise a family. Believing that education is the great equalizer, he has made it his top priority. He created Washington's Promise Scholarships for top high school students from working, middle-class families. He has pushed to hire more teachers and to reduce class size in the K-12 system. He appointed an Academic Achievement and Accountability Commission to help identify and improve schools that are struggling in the effort to raise test scores. He also created the Washington Reading Corps to help students who are struggling as they learn to read. And his Youth Safety Summit brought together educators, community leaders, students, and law enforcement leaders to begin addressing school violence.

In 1997, Gary signed into law a landmark welfare reform bill that puts work first and has reduced the number of families on welfare by almost a third. He helped roll back business and occupation taxes for businesses, and in 1999 refunded \$200 million in taxes from the injured workers fund. He has also put forward a Rural Economic Development proposal to help rural economies grow by making vital funds available for infrastructure development and work force training. Gary proposed a transportation plan in 1998 that provides strategic solutions for congested traffic corridors in urban areas, focusing on basics such as maintenance and highway improvements. His Offender Accountability Act will increase the supervision of felons after they have served their time.

Gary and his wife, Mona Lee Locke, a former reporter for KING 5 television in Seattle, were married on October 15, 1994. They are the parents of Emily Nicole, born on March 9, 1997, and Dylan James, born on March 13, 1999.

---

## State Elected Officials

---



### BRAD OWEN

#### Lieutenant Governor

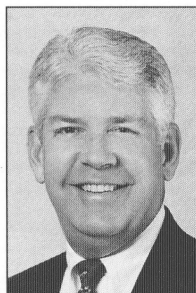
**Democrat.** Prior to his election as Lieutenant Governor he served four years as Finance Commissioner for the City of Shelton, six years in the House of Representatives and 14 years in the Washington State Senate. Lieutenant Governor Owen is a prominent member of his community and was a small business owner for 22 years. He is Chair of the Legislative Building Preservation and Restoration Commission, and the Legislative Committee on Economic Development. He serves as a member of the Governor's Substance Abuse Prevention Committee, State Capitol Committee, State Finance Committee, Washington Higher Education Facilities Authority, Washington Health Care Facilities Authority, the Washington Public Deposit Commission, and the Methamphetamine Coordinating Committee. The Lieutenant Governor is the Western Region Chair of the National Conference of Lieutenant Governors Executive Committee. Lieutenant Governor Owen founded and is the President of Strategies for Youth, a drug and alcohol awareness education program he presents in schools and to conferences throughout the State of Washington. He is an avid outdoorsman and sportsman. Brad and his wife, Linda, live in Shelton. They have six children and eight grandchildren.



### SAM REED

#### Secretary of State

**Republican.** Elected in 2000 as Washington's 14th Secretary of State. Raised in Wenatchee and graduated from Lewis and Clark High School in Spokane, Secretary Reed received his bachelor's and master's degrees in Political Science from Washington State University. Prior to his election as Secretary of State, Reed served five and a half terms as Thurston County Auditor receiving 10 national awards for innovations and excellence in the areas of election reform and record management. He served as the Assistant Secretary of State for six years and as Executive Director on Governor Evans' Constitutional Reform Commission and Urban Affairs Council. Active in election reform, voter outreach and historic preservation. Reed, and his wife Margie, have a son David, a daughter Kristen, and son-in-law Eric, and make their home in Olympia.



### MICHAEL J. MURPHY

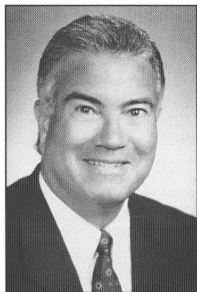
#### State Treasurer

**Democrat.** Elected in 1996. He is third in line of succession to the governor. Chairman of the State Finance Committee and Public Deposit Protection Commission. Member of the State Investment Board. Recently elected President of the Western State Treasurers' Association and vice president of the National Association of State Treasurers. A graduate of Seattle University, Mike received his master's degree in Business Administration from Pacific Lutheran University. Mike worked with the State Treasurer's Office from 1972-1987. He served as the Thurston County Treasurer for over nine and a half years. He previously served as President of Washington Municipal Treasurers' Association. Mike is a member of the Olympia Country and Golf Club, South Sound Sailing Society and the Olympia Yacht Club. Mike and his wife, Teri, who is a school teacher with the Olympia School District, live in Olympia on their sailboat.

---

## State Elected Officials

---



### **BRIAN SONNTAG**

#### **State Auditor**

**Democrat.** Brian Sonntag has served the citizens of Washington as State Auditor since 1993. He was elected to his third term in 2000. The office is an advocate for greater government accountability. An example of that is the Performance Based Government Act, which was proposed by the office and passed by the Legislature, laying the groundwork for performance measurement in state government. Before being elected State Auditor, Brian had a long career in public service with Pierce County, serving as County Clerk and later as Pierce County Auditor for two terms. Brian is recognized for his commitment to open and accountable government. He is a Certified Government Financial Manager and a member of the Council on Governmental Ethics Laws. He serves on the Performance Audit Task Force of the National State Auditors Association, which helps develop strategies for measuring state government performance and efficiency. He is a member of the state Productivity Board, which rewards state employees for innovative improvements. He is co-chair of Public Service Recognition Week, which annually recognizes state employees' work. Brian's civic involvement includes the United Way, the Boys and Girls Clubs, and many years as a youth baseball and basketball coach. He enjoys weight lifting, baseball and his family.



### **CHRISTINE GREGOIRE**

#### **Attorney General**

**Democrat.** Now serving her third term, Christine Gregoire is the first woman to serve as Washington State Attorney General. Raised in Auburn, she graduated from the University of Washington in 1969. In 1977 she received a Juris Doctorate degree and, in 1995, an honorary Doctor of Law degree from Gonzaga University. She served as president of the National Association of Attorneys General in 1999-2000; became an Assistant Attorney General in 1977; and 1981 became a Senior Assistant Attorney General in charge of the Spokane office. She later became the first woman to serve as Deputy Attorney General. In 1988 she was appointed director of the Washington State Department of Ecology where she served on the Puget Sound Water Quality Authority. She was the lead negotiator in the landmark settlement of state lawsuits against tobacco companies and has worked on programs to protect children and the elderly, started a new unit to fight Internet fraud and crime, and has worked to protect the financial privacy of consumers. She has argued and won two cases before the United States Supreme Court. Chris and her husband, Mike, have two daughters and live in Olympia.

---

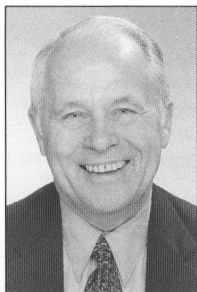
## State Elected Officials

---



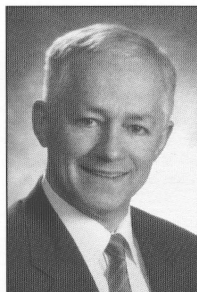
### **TERESA "TERRY" BERGESON, Ph.D.** **Superintendent of Public Instruction**

**Nonpartisan.** Terry began her career as a teacher and junior high school guidance counselor, working in Massachusetts, Alaska, and Washington. In 1985, she was elected President of the Washington Education Association, during which time she promoted the association's commitment to children and public education. She was hired in 1989 as an Executive Director of the Central Kitsap School District, where she supervised nine schools and several special programs. In 1993, Terry was appointed Executive Director of the Washington Commission on Student Learning, which is developing statewide standards for students and a series of tests students must pass prior to graduation. Terry has a B.A. in English, a master's in Counseling and Guidance, and a Ph.D. in Education. Throughout her career, Terry has focused on what is best for students and has worked tirelessly to build partnerships between legislators, educators, parents, and community leaders. Terry was elected to the office of State Superintendent in 1996, re-elected in 2000 and took the oath of office in January 2001.



### **DOUG SUTHERLAND** **Commissioner of Public Lands**

**Republican.** Serving his first term as Commissioner of Public Lands, Doug Sutherland administers the Department of Natural Resources, the state's management agency for forest, agricultural, range, tidal and shore lands. As Commissioner, Doug will work to balance the important goals of providing funding for schools, habitat protection and opportunities for recreation. He serves as chair of the Board of Natural Resources and the Forest Practices Board. Elected in November 2000, Doug previously served two terms as Pierce County Executive where he was co-chair of the Tri-County ESA Task Force. Doug began his political career as a member of the Tacoma City Council, then as Tacoma's mayor from 1982-1990. As mayor, Doug was instrumental in beginning the Superfund cleanup of Commencement Bay and improving the quality of Tacoma's air.



### **MIKE KREIDLER** **Insurance Commissioner**

**Democrat.** Commissioner Mike Kreidler has over 25 years experience in public service. He served for sixteen years in the state legislature, and was then elected to Congress. Between 1994 and 1997, he served as the Governor's Representative on the Northwest Power Planning Council. In 1998, President Clinton appointed him Regional Director of the Department of Health and Human Services. He has a Doctor of Optometry and a master's degree in public health. As an optometrist he worked for 20 years for Group Health Cooperative of Puget Sound in Olympia. Mike and his wife Lela, have three children and live in Lacey.

---

# Roster of Members

---

## Washington State Senate

(49 Members 25 Democrats and 24 Republicans)

Name	Pol.	Dist.	Address
OWEN, Brad President of the Senate	D	—	304 Legislative, Olympia 98504-0400 Olympia: (360) 786-7700
BENTON, Don	R	17	109B Irv Newhouse, Olympia 98504-0417 Olympia: (360) 786-7632
BROWN, Lisa J.	D	3	316 John A. Cherberg, Olympia 98504-0403 Olympia: (360) 786-7604
CARLSON, Don	R	49	106B Irv Newhouse, Olympia 98504-0449 Olympia: (360) 786-7696
CONSTANTINE, Dow	D	34	338 John A. Cherberg, Olympia 98504-0434 Olympia: (360) 786-7667
COSTA, "Jeri"	D	38	410 John A. Cherberg, Olympia 98504-0438 Olympia: (360) 786-7674
DECCIO, Alex A.	R	14	407 Legislative, Olympia 98504-0414 Olympia: (360) 786-7626
EIDE, Tracey J.	D	30	410 John A. Cherberg, Olympia 98504-0430 Olympia: (360) 786-7658
FAIRLEY, Darlene	D	32	425 John A. Cherberg, Olympia 98504-0432 Olympia: (360) 786-7662
FINKBEINER, Bill	R	45	201 Irv Newhouse, Olympia 98504-0445 Olympia: (360) 786-7672
FRANKLIN, Rosa	D	29	309 Legislative, Olympia 98504-0429 Olympia: (360) 786-7656
FRASER, Karen	D	22	417 John A. Cherberg, Olympia 98504-0422 Olympia: (360) 786-7642
GARDNER, Georgia	D	42	424 John A. Cherberg, Olympia 98504-0442 Olympia: (360) 786-7682
HALE, Patricia S.	R	8	303 Legislative, Olympia 98504-0408 Olympia: (360) 786-7614
HARGROVE, James E.	D	24	412A Legislative, Olympia 98504-0424 Olympia: (360) 786-7646
HAUGEN, Mary Margaret	D	10	437 John A. Cherberg, Olympia 98504-0410 Olympia: (360) 786-7618
HEWITT, Mike	R	16	115B Irv Newhouse, Olympia 98504-0416 Olympia: (360) 786-7630
HOCHSTATTER, Harold	R	13	401C Legislative, Olympia 98504-0413 Olympia: (360) 786-7624
HONEYFORD, Jim	R	15	204A Irv Newhouse, Olympia 98504-0415 Olympia: (360) 786-7684
HORN, Jim	R	41	107 Irv Newhouse, Olympia 98504-0441 Olympia: (360) 786-7680
JACOBSEN, Ken	D	46	427 John A. Cherberg, Olympia 98504-0446 Olympia: (360) 786-7690
JOHNSON, Stephen L.	R	47	401B Legislative, Olympia 98504-0447 Olympia: (360) 786-7692
KASTAMA, Jim	D	25	406 John A. Cherberg, Olympia 98504-0425 Olympia: (360) 786-7648
KLINE, Adam	D	37	431 John A. Cherberg, Olympia 98504-0437 Olympia: (360) 786-7688
KOHL-WELLES, Jeanne	D	36	432 John A. Cherberg, Olympia 98504-0436 Olympia: (360) 786-7670
LONG, Jeanine H.	R	44	102 Irv Newhouse, Olympia 98504-0444 Olympia: (360) 786-7686

---

## Roster of Members

---

### Washington State Senate

(49 Members 25 Democrats and 24 Republicans)

Name	Pol.	Dist.	Address
McAULIFFE, Rosemary	D	1	402A John A. Cherberg, Olympia 98504-0401 Olympia: (360) 786-7600
McCASLIN, Bob	R	4	112 Irv Newhouse, Olympia 98504-0404 Olympia: (360) 786-7606
McDONALD, Dan	R	48	406 Legislative, Olympia 98504-0448 Olympia: (360) 786-7694
MORTON, Bob	R	7	115D Irv Newhouse, Olympia 98504-0407 Olympia: (360) 786-7612
OKE, Bob	R	26	110 Irv Newhouse, Olympia 98504-0426 Olympia: (360) 786-7650
PARLETTE, Linda Evans	R	12	106A Irv Newhouse, Olympia 98504-0412 Olympia: (360) 786-7622
PATTERSON, Julia	D	33	422 John A. Cherberg, Olympia 98504-0433 Olympia: (360) 786-7664
PRENTICE, Margarita	D	11	419 John A. Cherberg, Olympia 98504-0411 Olympia: (360) 786-7616
RASMUSSEN, Marilyn	D	2	409 Legislative, Olympia 98504-0402 Olympia: (360) 786-7602
REGALA, Debbie	D	27	405 John A. Cherberg, Olympia 98504-0427 Olympia: (360) 786-7652
ROACH, Pam	R	31	202 Irv Newhouse, Olympia 98504-0431 Olympia: (360) 786-7660
ROSSI, Dino	R	5	109A Irv Newhouse, Olympia 98504-0405 Olympia: (360) 786-7608
SHEAHAN, Larry	R	9	403 Legislative, Olympia 98504-0409 Olympia: (360) 786-7620
SHELDON, Betti L.	D	23	410A Legislative, Olympia 98504-0423 Olympia: (360) 786-7644
SHELDON, Tim	D	35	408 Legislative, Olympia 98504-0435 Olympia: (360) 786-7668
SHIN, Paull H.	D	21	412B Legislative, Olympia 98504-0421 Olympia: (360) 786-7640
SNYDER, Sid	D	19	311 Legislative, Olympia 98504-0419 Olympia: (360) 786-7636
SPANEL, Harriet A.	D	40	312 Legislative, Olympia 98504-0440 Olympia: (360) 786-7678
STEVENS, Val	R	39	105 Irv Newhouse, Olympia 98504-0439 Olympia: (360) 786-7676
SWECKER, Dan	R	20	103 Irv Newhouse, Olympia 98504-0420 Olympia: (360) 786-7638
THIBAudeau, Pat	D	43	414 John A. Cherberg, Olympia 98504-0443 Olympia: (360) 786-7628
WEST, James E.	R	6	302 Legislative, Olympia 98504-0406 Olympia: (360) 786-7610
WINSLEY, Shirley J.	R	28	205 Irv Newhouse, Olympia 98504-0428 Olympia: (360) 786-7654
ZARELLI, Joseph	R	18	203 Irv Newhouse, Olympia 98504-0418 Olympia: (360) 786-7634

### SENATORS OF THE STATE OF WASHINGTON



#### BRAD OWEN Lieutenant Governor President of the Senate

**Democrat.** Prior to his election as Lieutenant Governor he served four years as Finance Commissioner for the City of Shelton, six years in the House of Representatives and 14 years in the Washington State Senate. Lieutenant Governor Owen is a prominent member of his community and was a small business owner for 22 years. He is Chair of the Legislative Building Preservation and Restoration Commission, and the Legislative Committee on Economic Development. He serves as a member of the Governor's Substance Abuse Prevention Committee, State Capitol Committee, State Finance Committee, Washington Higher Education Facilities Authority, Washington Health Care Facilities Authority, the Washington Public Deposit Commission, and the Methamphetamine Coordinating Committee. The Lieutenant Governor is the Western Region Chair of the National Conference of Lieutenant Governors Executive Committee. Lieutenant Governor Owen founded and is the President of Strategies for Youth, a drug and alcohol awareness education program he presents in schools and to conferences throughout the State of Washington. He is an avid outdoorsman and sportsman. Brad and his wife, Linda, live in Shelton. They have six children and eight grandchildren.

---

## Senators

---



### **BENTON, DON**

**Republican.** Represents the 17th District encompassing Eastern Clark County and Western Skamania. A self-employed business owner, Don lives in Vancouver with his wife, Mary and four children. His company, The Benton Group, conducts sales training and management consulting for television, radio and cable companies worldwide. Don holds a B.S. degree in management and communication and is an advertising and marketing expert. He is a Clark County Red Cross board member and also a former community college trustee. Don is the ranking minority member of the Transportation Committee and serves on the Labor, Commerce, and Financial Institutions Committee.



### **BROWN, LISA J.**

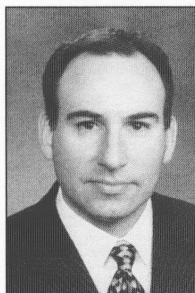
**Democrat.** Senator from the 3rd District, Spokane. Serving her second term as Senator, having served four years in the House of Representatives. Senator Brown is Chair of the Ways & Means Committee and a member of the Economic Development & Telecommunications Committee. She is an Associate Professor of Economics at Eastern Washington University. She holds a Ph.D and M.A. in Economics from the University of Colorado and a B.A. from the University of Illinois. Active in a number of community organizations, including Spokane Neighborhood Action Programs. She has one child, Lucas. They enjoy reading and bicycling.



### **CARLSON, DON**

#### **Republican Assistant Floor Leader**

**Republican.** Senator from the 49th District, which includes Vancouver, Hazel Dell, and southwest Clark County. Don is a graduate with a B.A. and M.Ed. from Western Washington University. He is a retired teacher with 31 years experience in the Vancouver Public Schools. Don is married to Janice and they have two grown sons and six grandchildren. He is active in First Christian Church (Disciples of Christ), Vancouver Chamber of Commerce, and community projects.



### **CONSTANTINE, DOW**

**Democrat.** Senator from the 34th District, including West Seattle, Burien, and Vashon Island. An attorney, Dow holds bachelor's, master's and law degrees from the University of Washington. The immediate past president of the West Seattle High School Alumni Association, Dow is a founder and vice president of the West Seattle High School Foundation. He is also a board member of the Delridge Neighborhoods Development Association, and has served as a member of the Allied Arts of Seattle Board of Trustees, the West Seattle Helpline Board of Directors, the Seattle Design Review Board, and the Seattle Open Space Oversight Committee. Dow served two terms in the House of Representatives, where he was co-chair of the Judiciary Committee and a member of the Legislative Ethics Board. Dow is vice-chair of the Ways & Means Committee, vice-chair of the Judiciary Committee, and a member of both the Natural Resources, Parks & Shorelines and Rules committees. He is the Assistant Majority Floor Leader. As ever, Dow makes his home in West Seattle.



---

## Senators

---



### **COSTA, JERALITA "JERI"**

**Democrat.** Represents the 38th District – Everett and Marysville. Serving her first term. Served two terms in the House of Representatives. 1977 graduate of Marysville-Pilchuck High School. Jeri's formal education includes: journalism, paralegal, business administration, financial and personnel management. Former executive director of Families and Friends of Violent Crime Victims from 1989 through 1993 and is currently a member of its advisory board. She regularly teaches workshops on victim services, criminal justice, corrections and non-profit management issues throughout the United States. Jeri has been a citizen activist and community volunteer as well as a private sector employee for more than 20 years. An avid bicyclist and scuba diver, Jeri lives in Marysville.



### **DECCIO, ALEX A.**

**Republican.** Senator from the 14th District, covering Yakima, Selah, Union Gap and other parts of Yakima County. Serving fifth term as State Senator since 1981. Ranking Republican member of the Senate Health and Long-Term Care Committee. Member Rules Committee and Senate Labor, Commerce & Financial Institutions Committee. Previous public service: House of Representatives from 1975-1981; Yakima County Commissioner from 1989-1993. Active in Yakima civic affairs. Member of several community organizations and member of Yakima Rotary Club. Deccio and his wife, Lucille, have eight children and 18 grandchildren.



### **EIDE, TRACEY J.**

#### **Majority Whip**

**Democrat.** Senator from the 30th District, including South King and North Pierce Counties. Serving her first term in the Senate. She previously served in the House of Representatives from 1993-94 and held the leadership position of Assistant Majority Whip. Served three years on the Federal Way Human Services Commission, Chair 1997-1998. She has been a leader in the PTA and a dedicated school volunteer for over a decade. Recipient of two Golden Acorn Awards and Federal Way School District Service Award for her distinguished leadership in education. Served on the King County Disability and Retirement Board for Police and Firefighters. She's also a small business owner. Tracey and her husband, Mark, are lifelong residents of South King County and have two children, Joanna (17) and Matthew (13).

---

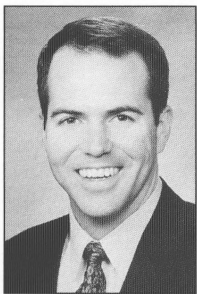
## Senators

---



### **FAIRLEY, DARLENE**

**Democrat.** Senator from the 32nd District of King County. She is serving her second term in the Senate. Vice chair of Ways & Means Committee, member of State & Local Government, Labor, Commerce, & Financial Institutions and Economic Development & Telecommunications committees. Born and raised in Seattle, Darlene earned a B.A. in Political Science from the University of Washington and has completed graduate work in International Management and International Relations. Small business owner with a long history of community service. Served as Lake Forest Park City Councilwoman, a court-appointed special advocate for abused children, and a volunteer victim advocate for the Seattle Police Department. Darlene and her husband, Michael, live in Lake Forest Park. Their son, Andrew, works as a computer engineer.



### **FINKBEINER, BILL**

**Republican.** Senator from the 45th District including Woodinville, Duvall, Carnation and parts of Kirkland and Redmond. Bill is serving his second term in the Senate following one term as a member of the House of Representatives. Bill is the ranking Republican member of the Education Committee and a member of the Economic Development & Telecommunications and Transportation committees. Bill is a lifelong Washington State resident and a graduate of Lake Washington High School and Whitman College. Bill, his wife Kristin and their son, Connor, and daughter, Anna, live in Kirkland.



### **FRANKLIN, ROSA**

#### **President Pro Tempore**

**Democrat.** Senator from the 29th District, Pierce County, which includes South Tacoma, Parkland, McChord Air Base, Manitou and McKinley Hill. She served one term in the House of Representatives. A longtime resident of her district, Rosa is active in political and community affairs. Rosa relinquished a 42 year diverse nursing career since becoming a legislator. She is a graduate of Good Samaritan Waverly Hospital School of Nursing, Columbia, South Carolina; University of Puget Sound, Pacific Lutheran University and also holds a women's Health Care Specialist Certificate from University of Washington Gynecorp Training Program. Rosa, and her husband, James, an Army retiree, are parents and grandparents.



### **FRASER, KAREN**

**Democrat.** Senator from the 22nd District, comprised of the northern portion of Thurston County, including all of Olympia, Lacey, and most of Tumwater. Serving her third term as State Senator. Former State Representative, Thurston County Commissioner and Mayor of Lacey. Past President of the Washington State Association of Counties. Graduate of University of Washington with B.A. and M.P.A degrees. Co-Chair, Legislative International Caucus. Married to Tim Malone, retired Senior Assistant Attorney General. They have a daughter and granddaughter.

---

## Senators

---



### **GARDNER, GEORGIA**

#### **Majority Assistant Floor Leader**

**Democrat.** Georgia represents Whatcom County in the 42nd District, which includes Blaine, Sumas and northern Bellingham. Served in the House of Representatives from 1997-1998. A Central Washington University graduate in accounting, she also holds a master's degree in taxation. Georgia owns a certified public accounting firm in Blaine, which focuses on US-Canadian cross-border businesses and on individuals who work between the two countries. She is active in the United Methodist Church and in community and service organizations in Blaine and Whatcom County. Georgia has two married children and two granddaughters.



### **HALE, PATRICIA S.**

#### **Republican Caucus Chair**

**Republican.** Pat serves the citizens of the 8th District which encompasses most of Benton County, including Richland and Kennewick. She is employed as director of strategic initiatives for Fluor Hanford and has worked at the site since 1985. Prior to that, she ran her own marketing/communications company. She is a national Fellow and 2000 graduate of Harvard University's Senior Executive Program. She is also Washington State's first recipient of the Westinghouse National Award for Total Quality Achievement in management. Active in the community, Pat is a director of TRIDEC, the United Way, Tri-Cities Visitor and Convention Bureau, the Reading Foundation and the Tri-Cities Cancer Center. She is also a Paul Harris Fellow and Benefactor of Rotary International. Pat and her husband, Tom, have five grown children and six "adorable" grandkids.



### **HARGROVE, JAMES E.**

**Democrat.** Senator from the 24th District: Clallam, Jefferson and western Grays Harbor Counties. He served four terms in the House and is currently serving his third term in the Senate. Jim was born in Portland, Oregon and graduated with a B.S. in Forestry Management from Oregon State University. He is self-employed as a forester on the Olympic Peninsula. Jim and his wife, Laurie, and three children live in Hoquiam and are active members of the local Christian community. Jim's legislative work emphasizes trade/economic development and natural resources management from a rural community perspective.



### **HAUGEN, MARY MARGARET**

**Democrat.** Senator from the 10th District, representing all of Island County, parts of Snohomish and Skagit. Currently serving her third term in Senate, she has served five terms in the House of Representatives. Mary Margaret is the Chair of the Transportation Committee, member of Economic Development & Telecommunications and State & Local Government committees. Chair of Municipal Research Council, Legislative Transportation Committee, League of Women Voters, member of United Methodist Church and the Utsalady Ladies Aid. Lifetime resident of Camano Island. Mary Margaret is married to Basil Badley. Together they have a blended family of 10 adult children and 29 grandchildren.

---

## Senators

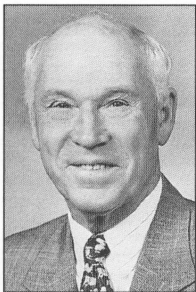
---



### HEWITT, MIKE

#### **Republican Assistant Whip**

**Republican.** Senator representing the 16th District, comprised of Franklin, Walla Walla, Columbia, Garfield and most of Asotin Counties. Mike Hewitt is the Executive Director of the Walla Walla Valley Chamber of Commerce, and a former chairman of the Walla Walla Planning Commission. Mike is well known for his community work and has volunteered for many civic groups including Rotary, Elks, United Way, the YMCA, and the State Penitentiary Citizen Advisory Council. Mike built a thriving wholesale company in Walla Walla before selling it last year. As an active member of the chamber, Mike has visited Olympia many times to advocate for small business issues over the past ten years. Mike's wife, Cory, is the manager of the county fairgrounds. They have two grown sons.



### HOCHSTATTER, HAROLD

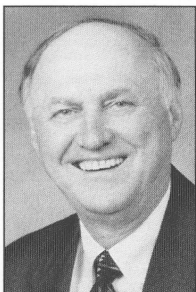
**Republican.** Senator from the 13th District, which includes parts of Grant, Adams, Kittitas and Yakima counties. Harold is a graduate of Moses Lake schools and WSU. He is part owner of an electrical contracting firm. He also owns Keller Quay, a residential plat of twenty lots. Harold enjoys reading, sailing and the outdoors. He is a Christian and a member of Immanuel Lutheran Church.



### HONEYFORD, JIM

#### **Republican Whip**

**Republican.** Represents the 15th District, which includes Klickitat County, and parts of Yakima, Benton and Skamania counties. Served in the House of Representatives from 1995-1998. He is a member of the Senate Environment, Energy & Water, Labor, Commerce & Financial Institutions, and Ways & Means committees. Jim is a graduate of Central Washington University with a master's degree in Education and was an educator for 28 years. He is a former member of the Sunnyside City Council, and served on several community boards in addition to many church and school committees. His previous work includes five years as a police officer. Jim and his wife, Jerri, have four grown children. They farm north of Sunnyside.



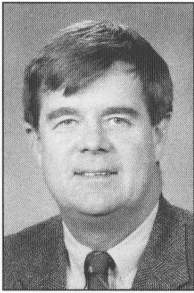
### HORN, JIM

**Republican.** Senator from 41st District which includes Mercer Island, downtown and southern Bellevue, Newcastle, areas of unincorporated King County and northeastern Renton. Second term in the Senate after four terms in the House of Representatives. Born and raised in central Illinois. B.S. in Mechanical Engineering from University of Illinois. Graduate studies at SMU. Four term Mercer Island City Councilman and past Mayor. Served 31 years in management of space and military programs with Boeing. Active in many community activities, including Children Response Center, Lions and VFW. He and wife, Joyce, have two grown children, Brad and Lisa, and three granddaughters, Nicole, Brittney, and Lindsey.

---

## Senators

---



### JACOBSEN, KEN

#### Majority Caucus Vice Chair

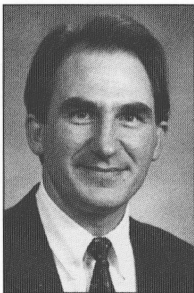
**Democrat.** 46th District, NE Seattle. Serving first full term in the Senate after seven terms in the House of Representatives. Born in Dannebrog, Nebraska, of "Postcard from Nebraska" fame. Raised in NE Seattle; attended Lake City Elementary, Shoreline High School, University of Washington and Christchurch Teachers' College, New Zealand. Serves as the Chair of Natural Resources, Parks & Shorelines Committee; and serves on the Transportation, Higher Education, Environment, Energy & Water, and Joint Pension & Policy committees. Involved in Dollars for Scholars, Friends of the University of Washington Library, Seattle Audubon Society, American Indian Endowment Committee, Thornton Creek Alliances and the Washington State Holocaust Education Center. Married to a New Zealander, Rachel, with two daughters, Sonja and Kiri. Hobbies: birding, hummingbird and butterfly gardening, and reading.



### JOHNSON, STEPHEN L.

#### Republican Deputy Leader

**Republican.** Second term Senator from the 47th District, encompassing southeast King County from the Renton Highlands to Kent to Black Diamond. Senator Johnson is of counsel with the law firm of Kutscher-Johnson, LLP and a former Kent School Board member. He holds a bachelor's degree from Whitman College and a law degree from the University of Washington. He is the Republican Deputy Leader and serves on the committees of Transportation, Judiciary, Education, and Rules. Steve and his wife, Lynn, have two grown children, Jennifer Smith and Tom Johnson, and two granddaughters.



### KASTAMA, JIM

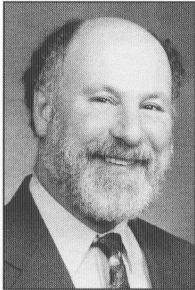
#### Majority Assistant Whip

**Democrat.** Senator from the 25th District which includes the cities of Puyallup, Sumner, Milton, Edgewood, Fife and Pacific. A graduate of Puyallup High School and the University of California, Jim was elected to the House in 1996 when he served as the Assistant Democratic Leader. Jim has spent his career in business sales and management. He is married to wife Barbara and is the father of five children, Isaac, Anna Laura, Michael, Rachel, and Sarah.

---

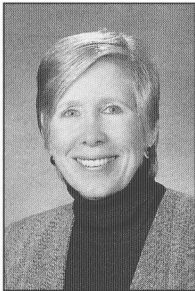
## Senators

---



### **KLINE, ADAM**

**Democrat.** Represents the 37th District of Seattle, including Rainier Valley, Madrona, Leschi, South and East Beacon Hill, Rainier Beach and Skyway. Has practiced law for more than 28 years. Before entering law school, worked as a merchant seaman and as a newspaper reporter. Attended Johns Hopkins University where he earned a bachelor's degree in 1968. Earned his law degree from the University of Maryland in 1972. Started his legal career with North Mississippi Rural Legal Services. He now has a sole practice specializing in personal injury and civil rights law. He is a cooperating attorney with the American Civil Liberties Union and is active in the National Abortion Rights Action League, Wash. Conservation Voters and Mothers Against Drunk Driving. His wife, Laura Gene Mid-daugh, is a Superior Court Judge in King County. They live in the Mount Baker neighborhood of Seattle. Their daughter, Genevieve, is a graduate of Brown University and lives in Boston.



### **KOHL-WELLES, JEANNE**

**Democrat.** Serving in the Senate since 1994, Jeanne is Chair of the Higher Education Committee and a member of the Education, Human Services & Corrections, and Ways & Means committees. She served in the House of Representatives (1992-94) and as Majority Whip (1993-94). She's a member of LEAP, JLSC, Sentencing Guidelines Commission and the Leg. Children's Oversight Committee. Jeanne earned B.A. and M.A. degrees in Education from California State University, Northridge and an M.A. in Sociology and Ph.D. in the Sociology of Education from UCLA. A former public school teacher, she's been on the University of Washington faculty for 15 years and worked as a University of California, Irvine administrator and U.S. Dept. of Education educational equity specialist. Jeanne is a member of numerous government and civic organizations, including the National Conference of State Legislatures' ASI Education Committee (Vice Chair), Women's Legislative Network Board and ASI Human Services Committee; Center for Women Policy Studies' Policy Council; and Center for Policy Alternatives advisory councils and a 1999 Flemming Fellow. She's a current/former board member of many community groups, including the Queen Anne Community Council; Bayview Manor; YouthCare; Ballard Rail Group; Queen Anne Helpline; Greenwood Senior Center; Committee for Children; Aloha Inn Transitional Housing Program. Jeanne lives with her husband, Alex Welles, on Queen Anne Hill and is the mother of five grown children.



### **LONG, JEANINE H.**

**Republican.** Senator from the 44th District of south Snohomish County, serving her second term in the Senate after three terms in the House of Representatives. Ranking Republican member of Human Services & Corrections and member of Judiciary and Ways & Means committees. A graduate of the University of Washington with a B.A. in Psychology, Jeanine is a former Brier City Council member and Mayor pro tem, Mill Creek Community Association Vice President, and member of various boards and commissions. She is married to Ken Long, a self-employed architect and former mayor of cities of Mill Creek and Brier. Jeanine lives in Mill Creek and has five children and six grandsons and two granddaughters.

---

## Senators

---



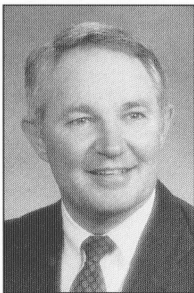
### **McAULIFFE, ROSEMARY**

**Democrat.** Senator serving the 1st District, which includes Bothell, Mountlake Terrace, Brier, and parts of Woodinville, Kirkland, and Kenmore. Chair of Education Committee, member of Higher Education and Environmental Quality and Water Resources committees. Served 14 years on Northshore School Bd. Former Chair of Bothell Downtown Management Assn: a revitalization project. Member, Food Safety Handling Comm. - Dept of Health, Special Education Advisory Comm. - OSPI. Co-Chair, Joint Select Comm. of Lake Health, and Joint Select Education Restructuring Comm. Member, State Interagency Coordinating Council for Infants and Toddlers with Disabilities and their families. Graduated Seattle University - B.S. R.N. Rosemary and her husband, Jim, have lived in the Bothell area for 36 years. They have 6 adult children and 9 grandchildren.



### **McCASLIN, BOB**

**Republican.** Senator from the 4th District of Spokane County. Served in the U.S. Navy during WW II, graduate of WSU in 1950, post graduate work in 1951 and 1952 with a major in Sociology and Economics. Served in Production Management with large aluminum fabricator and owned and managed a real estate firm in the Spokane Valley. He has been active in many service clubs and civic activities in the Spokane Valley.



### **McDONALD, DAN**

**Republican.** First elected to the Legislature in 1978, represents the Bellevue, Kirkland and Redmond areas of King County in the 48th District. He, his wife Janie, and their two sons have lived in Bellevue for 29 years following his return from active duty as a Naval Officer in Vietnam. He is a mechanical engineering graduate from the University of Washington, where he also earned a master's degree in Economics. Dan works for a design engineering firm in Seattle. He is active in Rotary, the Eastside Transportation Committee, and serves as a board member of the Washington Wildlife and Recreation Coalition and Mountain to Sound Greenway Trust.



### **MORTON, BOB**

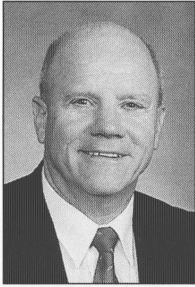
**Republican.** Senator from the 7th District, which includes Pend Oreille, Stevens, Ferry, Lincoln, and parts of Okanogan and Spokane Counties. Serving his second full term in the Senate. Previously served two terms in the House of Representatives. Ranking Republican member of Environment, Energy & Water Committee. Member, Natural Resources, Parks & Shorelines Committee, Eastern Washington Caucus. A graduate of Alfred University, Morton is active in the Orient Community Church, the Kettle River Grange, the Kettle Falls Chamber of Commerce, Citizens for a Great Northwest, and the Washington Cattlemen's Association. He and his wife, Linda, have been residents and property owners in the 7th District since 1970. They have five grown children and ten grandchildren.



---

## Senators

---



### OKE, BOB

**Republican.** 26th District, parts of Pierce and Kitsap counties. Elected in 1990, 1994 and 1998. A 26-year U.S. Navy veteran. Bob has served in Senate leadership, and as chair of the natural resources committee. He has played a key role in transportation issues, including ferries, serving on several special committees. He has worked to find community-based solutions to the dwindling natural salmon runs. He has been a leader in promoting anti-smoking legislation, especially for youths. He has been recognized for his support of small business enterprises, family farms, and veterans. Bob served on the committee to establish a WWII memorial on the capitol campus. He is a member of Grace Bible Church, the Port Orchard Kiwanis, and Chamber of Commerce. He is an avid outdoorsman and gardener. Bob and his wife, Judy, have three grown children and eight grandchildren.



### PARLETTE, LINDA EVANS

**Republican.** Senator from the 12th District, consisting of Chelan and Douglas counties, parts of Okanogan, and Grant counties. A graduate of Washington State School of Pharmacy. Serving first term in the Senate, after serving two terms in the House of Representatives. Serves as a member on the Board of Directors for Washington State Ag-Forestry Leadership Foundation and formerly served on Lake Chelan School board and North Center ESD board. Active in Wenatchee Rotary and various community activities. Has two grown sons and resides with husband, Bob and son Andrew in Wenatchee.



### PATTERSON, JULIA

**Democrat.** Senator from the 33rd District of King County; serving her second term in the Senate, after two terms in the House of Representatives. She served as a founding member of the City of SeaTac. Lifelong resident and activist in her community; bachelor's degree, from both the University of Washington and Washington State University; community volunteer and activist; former small business owner. She and her husband, Pat, have three children.



### PRENTICE, MARGARITA

**Democrat.** Senator from the 11th District, which includes south Seattle, Renton, Tukwila and SeaTac. Serving third term in Senate, served from May, 1988 through 1992 in the House of Representatives. Attended University of Washington. Retired nurse; served as a Nurse Administrator for seven years. Former Renton School Board member. Member of Amnesty International, American Civil Liberties Union, and Humane Society of the U.S. Margarita and her husband, Bill, have lived in Skyway for more than 42 years. They have three children: Kathy, Christy Burton and Bill III; and five grandchildren: Faith, Elisabeth, Daryl John (D.J.), Hope, and Matthew Carl.



---

## Senators

---



### **RASMUSSEN, MARILYN**

**Democrat.** Senator from the 2nd District of Pierce County. Serving her third term in the Senate, having served six years in the House of Representatives. Chair of Agriculture and International Trade. Member of Labor, Commerce & Financial Institutions, Education, and Ways & Means committees. Born and raised in the north end of Seattle and attended the University of Washington. She is a farmer, former school board member and is active in youth, community and agricultural organizations. She and husband, Don, own and operate a 360 acre family beef and timber farm near Eatonville. They have seven children and 16 grandchildren.



### **REGALA, DEBBIE**

**Democrat.** Senator from the 27th District. Life-long resident of Tacoma, Debbie is actively involved in the community. She has served on numerous boards and committees in the Tacoma/Pierce County area. From 1986-1992, Debbie was a commissioner for the Metropolitan Park District of Tacoma. Currently Debbie is a member of the Board of Directors of the Sexual Assault Center of Pierce County and the Tacoma/Pierce County Chapter of the American Leadership Forum. She also serves as a member of the Executive Committee of the Washington Community Forestry Council and on the Board of Directors of the Nature Conservancy of Washington. Debbie graduated from the University of Puget Sound with a degree in foreign languages and education. She and her husband, Leo, have three children and two granddaughters.



### **ROACH, PAM**

**Republican.** Senator from the 31st District, serving Auburn, Bonney Lake, Buckley, Carbonado, Enumclaw, Greenwater, Wilkeson and parts of Kent. Senator Roach is serving her third term and is a member of the Ways & Means Committee, the Judiciary Committee and is the ranking member of the State & Local Government Committee. Bachelor's degree in history from Brigham Young University; employed as a King County Council staff member; Joint Council on Military and Veterans' Affairs; Auburn Food Bank Board of Directors; Lake Tapps Task Force. Senator Roach is a long-time community leader. Her son, Dan, is a member of the House of Representatives. She and her husband Jim have five children and live on a small farm east of Auburn.



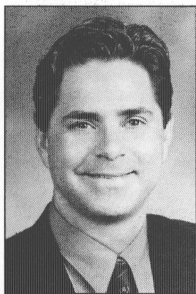
### **ROSSI, Dino**

**Republican.** Representing the 5th District, which includes Sammamish, Issaquah, North Bend, Maple Valley, Snoqualmie Valley, and the Fairwood area of Renton. Senator Rossi is a member of the Ways & Means Committee and the Economic Development & Telecommunications Committee. He is the ranking Republican member of the Ways & Means Committee. Dino graduated from Seattle University with a degree in Business Administration and is currently Vice President of Scott Real Estate Investments in Seattle. Senator Rossi, his wife, Terry, and their four children live on the Sammamish Plateau.

---

## Senators

---



### **SHEAHAN, LARRY**

#### **Republican Floor Leader**

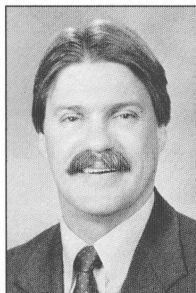
**Republican.** Senator from the 9th District, comprising Whitman County and Adams County, Clarkston and southern Spokane County. Served four terms in the House of Representatives. Married to wife, Lura. Former President Rosalia Chamber of Commerce and former board member, Palouse Economic Development Council. Graduate of Washington State University with a BA degree in Political Science, and Willamette University College of Law with a JD degree. Partner in law firm of Sheahan & Sheahan, P.S. in Rosalia.



### **SHELDON, BETTI L.**

#### **Majority Floor Leader**

**Democrat.** Senator from the 23rd District comprised of East Bremerton, Silverdale, North Kitsap and Bainbridge Island areas of Kitsap County. Currently serving or has served on the boards of directors of: Small Business Improvement Council; Comm. on Student Learning's K-12 Accountability Task Force; National Assn. of Admin. Rules Review; YMCA Youth & Govt., State Board; Governor's Regulatory Reform Task Force; Jt. Admin. Rules Review Committee; Big Brothers & Big Sisters of Kitsap Co.; Kitsap Co. Econ. Dev. Council; East Bremerton Rotary; Puget Sound Naval Bases Assn.; West Sound Arts Council; Bremerton Olympic Peninsula Council Navy League; Vice Pres., WA Chamber of Commerce Executives; Former Chair, Ferry Advisory Committee; WA Dev. Finance Authority; Keyport Naval Undersea Museum Foundation trustee. Special recognition: "Housing Hero" Award, WA Low-Income Housing Congress, November 2000; Olympic College Hall of Fame Award, 2000; named "Senate Rising Star" by WA Law & Politics, March 2000; Strong Kids, Strong Families, Strong Communities Award by YMCA of WA, 1999; Democratic Woman of the Year by WA State Federation of Democratic Women's Clubs, 1997; Woman of Achievement Award from YWCA of Kitsap County, 1993. She has 5 children and 4 grandchildren.



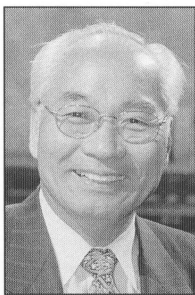
### **SHELDON, TIM**

**Democrat.** Senator from the 35th district, which includes all of Mason County and portions of Grays Harbor, Kitsap and Thurston Counties. Served in the House of Representatives 1991-1997. A district native, Tim holds a Degree in Economics from the Wharton School of the University of Pennsylvania and an M.B.A. from the University of Washington. Tim resides in Potlatch on Hood Canal and manages a family-owned tree farm. He is an economic developmental specialist who has worked for community-based organizations and Northwest Indian Tribes. He and his wife Linda, have a 16 year-old daughter, Alex.

---

## Senators

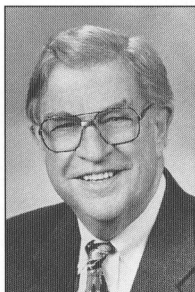
---



**SHIN, PAULL H.**

**Vice President Pro Tempore**

**Democrat.** Senator serving the 21st District, which includes Edmonds, Woodway, parts of Mukilteo, Mountlake Terrace, and Lynnwood, in Snohomish County. Senator Shin was adopted by an American GI during the Korean War. Brought to the United States by his adoptive family, he began his education with a GED and has earned a Ph.D. in History from the University of Washington. He is recently retired from teaching at the college level for 31 years, the last 26 years at Shoreline Community College in Seattle. Senator Shin serves on the Higher Education Committee as Vice Chair, Agriculture & International Trade as Vice Chair, and a member of the Transportation Committee. Paull and Donna have lived in Edmonds for 31 years and have two children and four grandsons.



**SNYDER, SID**

**Majority Leader**

**Democrat.** Senator from the 19th District comprised of Pacific, Wahkiakum, and parts of Cowlitz and Grays Harbor Counties. A lifetime resident of the district. Served as Secretary of the Senate for nearly 20 years. Attended Lower Columbia College. Owns and operates a market on the Long Beach Peninsula. Vice-chair of the Board, Pacific Financial Corp. Tourism and local economic development advocate. He and his wife, Bette, have three children and four grandchildren.



**SPANEL, HARRIET A.**

**Majority Caucus Chair**

**Democrat.** Third term as Senator serving the 40th District, which includes San Juan, northwestern and eastern Skagit and southwestern Whatcom Counties. Served six years in House of Representatives. Member: Natural Resources, Parks and Shorelines; Agriculture & International Trade; Rules; and Ways & Means committees. Born and raised on Iowa farm; earned B.S. in Mathematics from Iowa State University. Longtime activist in local and state issues; past member Planning and Economic Development Commission and Parks & Recreation Board; involved in wide variety of organizations, including League of Women Voters. She and husband, Les, moved to the Northwest in 1964, have lived in Bellingham since 1968, and have three grown children.

---

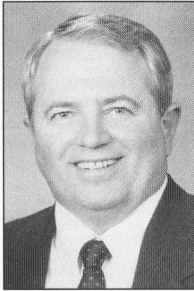
## Senators

---



### STEVENS, VAL

**Republican.** Senator from the 39th District which covers a majority of Snohomish County: Arlington, Darrington, Granite Falls, Index, Lake Stevens, Lakewood, Monroe, Snohomish, Sultan and part of King Co. which includes Skykomish. Former WA State Director of Concerned Women For America, 1987-91 and member of the Nat'l Bd of Directors, 1991. Elected to a second term in the Senate after serving four years in the House. Committees: Ranking Republican member of Economic Development & Telecommunications; Human Services & Corrections, and Natural Resources, Parks & Shorelines. Also serves on JLARC, Family Policy Council, Governor's Council on Substance Abuse, WA State Task Force on Employment of Adults with Disabilities. WA State Chair of American Legislative Exchange Council and ALEC Telecommunications & Information Technology Task Force. She and her husband Keith have two grown sons and four grandchildren.



### SWECKER, DAN

**Republican.** Senator from the 20th District, which includes portions of Lewis, Pierce and Thurston Counties. Appointed to the Senate in 1995, elected in 1995 and 1996. An owner/operator of a salmon farm for more than 20 years, he currently serves as Secretary-Treasurer for the Wash. Fish Growers Assn. His current committee assignments include Agriculture & International Trade, State & Local Government, and Transportation. Holds a B.A. Degree in Cooperative Education from TESC. He served as a fireman and fire commissioner for Thurston District No. 1, is a former board member and Chair of the Centralia Christian School. A veteran of the Vietnam War, he received the Bronze Star and Purple Heart while serving as an Army helicopter pilot. Dan and his wife, Debby, have four children: Jenny, Joel, Devin and Amy and reside in Rochester.



### THIBAudeau, PAT

**Democrat.** Senator from Seattle's 43rd District, including the neighborhoods of Madison Park, Broadmoor, Madison Valley, Montlake, Capitol Hill, Wallingford, University-Ravenna, and parts of Laurelhurst, Fremont, the Regrade, and Downtown. Former state Representative. Graduate of Whitman College with a master's from Smith College School for Social Work. Married with two adult children. Former partner in a governmental relations firm which represented the Community Mental Health Council, Washington Women United and Childhaven. Chair of Health and Long-Term Care Committee from 1999 to date. Also serves on Ways & Means and Judiciary committees.

---

## Senators

---



### **WEST, JAMES E.**

#### **Republican Leader**

**Republican.** 6th District, Spokane County. Elected Senate Republican Leader in 1999, Senator James West has served as chair of the budget-writing Senate Ways & Means Committee and the Senate Health & Long-Term Care Committee. His current committee assignments include Labor, Commerce & Financial Institutions and Rules. A two-term House member and currently in his fourth Senate term, West has become a recognized leader in health care and budget matters. Before becoming a state legislator in 1982, he served on the Spokane City Council. Prior to entering public service, he was a paratrooper in the United States Army and was employed as a Spokane County Deputy Sheriff. A graduate of Gonzaga University with a B.A. degree in Sociology, West lives in the Spokane area and is active in local area youth organizations. He also is a member of Rotary International.



### **WINSLEY, SHIRLEY J.**

**Republican.** Representing the 28th District, comprised of Pierce County communities of West Tacoma, Fircrest, University Place, Lakewood, Steilacoom, Tillicum and McNeil, Ketrone, Anderson and Day Islands. Born in Fosston, Minnesota. Graduate of Tacoma Community College, attended PLU. Shirley served 15 years in the House and was sworn into the Senate on Nov. 19, 1992. She is the ranking Republican member of the Labor, Commerce, & Financial Institutions Committee; member of the Health & Long-Term Care Committee and the Ways & Means Committee; Pension Policy, Public Works Procurement, LEAP, Veterans and Military Affairs, Council on Aging, Washington State Gambling Commission, and Washington State Arts Commission. Past member and Chair of the Pierce County Council. She and husband, Gordon, have two grown children and five grandchildren.



### **ZARELLI, JOSEPH**

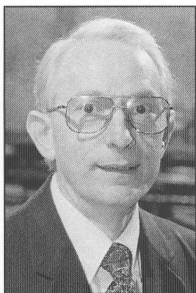
#### **Republican Caucus Vice Chair**

**Republican.** Representing the 18th District which includes North Clark, East Cowlitz, and South Lewis Counties. Joseph serves as Republican Caucus Vice Chair. He serves on the Education; Judiciary; and Ways & Means committees. He is Republican lead member on the Capital Budget. Joseph is an eight year veteran of the U.S. Navy and is Managing Director for an International Security Consulting and Investigations Company. His business provides security consulting services to businesses and law firms. Joseph and wife, Tani, have been married fourteen years and have four daughters, Terri, Brynn, Karrie, and Ashley.

---

## Senate Administration

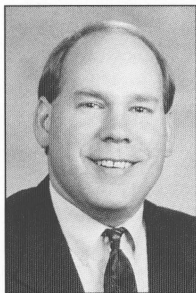
---



### **COOK, TONY**

#### **Secretary of the Senate**

Elected Secretary of the Senate in January, 1999. Tony received his undergraduate degree from Washington State University and his law degree from Stanford University Law School. Tony started with the Senate Research Center in 1973, spent a year with the University of Washington administration, and went to the staff of the Utilities and Transportation Commission in 1977. In 1991, Tony returned to the Legislature as Senate Counsel, and subsequently as Counsel to the Legislative Ethics Board. He and his wife, Joy, have two children in college: Michael (WSU) and Libby (Loyola Marymount).



### **HENDRICKSON, BRAD**

#### **Deputy Secretary of the Senate**

A graduate of political science from Western Washington University, Brad completed a Senate internship in 1982 and served as Legislative Liaison for WWU students in 1983. He began working for the Legislature in 1984 as an administrative aide to a State Representative. Since going to work for the Senate in 1986, Brad has held a number of positions including: Research Analyst, Systems Analyst, Staff Coordinator, Deputy Staff Director, Information Systems Coordinator, and now Deputy Secretary. Raised in Southwest Washington (Puget Island), Brad now lives in Olympia with his wife, Laura, and two children, Sarah and Sean.



### **GOTOVAC, GENE**

#### **Sergeant at Arms**

Elected Sergeant at Arms January 1999. Retired from private business after 30 years. Employed by the Washington State Senate for 18 sessions.

---

# Roster of Members

---

## Washington State House of Representatives

(98 Members 49 Republicans and 49 Democrats)

Name	Pol.	Dist.	Address
AHERN, John E.	R	6	3615 S Lincoln Dr., Spokane 99203 Olympia: (360) 786-7962
ALEXANDER, Gary	R	20	7915 Lorna Dr. SE, Olympia 98503 Olympia: (360) 786-7990
ANDERSON, Glenn	R	5	PO Box 1682, Issaquah 98027 Olympia: (360) 786-7876
ARMSTRONG, Mike	R	12	1684 Pitcher Canyon Rd., Wenatchee 98801 Olympia: (360) 786-7832
BALLARD, Clyde	R	12	1790 N Baker St., East Wenatchee 98802 Olympia: (360) 786-7999
BALLASIOTES, Ida	R	41	PO Box 714, Mercer Island 98040 Olympia: (360) 786-7926
BARLEAN, Kelly	R	10	PO Box 389, Langley 98260 Olympia: (360) 786-7914
BENSON, Brad	R	6	8028 N Pamela, Spokane 99208 Olympia: (360) 786-7922
BERKEY, Jean	D	38	PO Box 40600, Olympia 98504-0600 Olympia: (360) 786-7840
BOLDT, Marc	R	17	PO Box 40600, Olympia 98504-0600 Olympia: (360) 786-7994
BUCK, Jim	R	24	PO Box 170, Joyce 98343 Olympia: (360) 786-7916
BUSH, Roger	R	2	PO Box 191, Spanaway 98387 Olympia: (360) 786-7824
CAIRNES, Jack	R	47	PO Box 59505, Renton 98058 Olympia: (360) 786-7858
CAMPBELL, Tom	R	2	PO Box 443, Spanaway 98387 Olympia: (360) 786-7912
CARRELL, Michael	R	28	10210 Lake Louise Dr. SW, Tacoma 98498 Olympia: (360) 786-7958
CASADA, Sarah	R	25	4441 S Meridian #333, Puyallup 98374 Olympia: (360) 786-7948
CHANDLER, Bruce	R	15	PO Box 1108, Zillah 98953 Olympia: (360) 786-7960
CHANDLER, Gary	R	13	4488 Dunn St., Moses Lake 98837 Olympia: (360) 786-7932
CHOPP, Frank	D	43	4209 Sunnyside N, Seattle 98103 Olympia: (360) 786-7920
CLEMENTS, Jim	R	14	420 Larkin Lane, Selah 98942 Olympia: (360) 786-7856
CODY, Eileen	D	11	5209 36th Ave. SW, Seattle 98126 Olympia: (360) 786-7978
CONWAY, Steve	D	29	8121 South Park, Tacoma 98408 Olympia: (360) 786-7906
COOPER, Mike	D	21	PO Box 40600, Olympia 98504-0600 Olympia: (360) 786-7950
COX, Don	R	9	710 S Crestview Dr., Colfax 99111 Olympia: (360) 786-7942
CROUSE, Larry	R	4	PO Box 40600, Olympia 98504-0600 Olympia: (360) 786-7820
DARNEILLE, Jeannie	D	27	PO Box 7753, Tacoma 98406 Olympia: (360) 786-7974
DeBOLT, Richard	R	20	156 S Market Blvd., Chehalis 98532 Olympia: (360) 786-7896

---

## Roster of Members

---

### Washington State House of Representatives

(98 Members 49 Republicans and 49 Democrats)

Name	Pol.	Dist.	Address
DELVIN, Jerome	R	8	PO Box 303, Richland 99352 Olympia: (360) 786-7986
DICKERSON, Mary Lou	D	36	PO Box 40600, Olympia 98504-0600 Olympia: (360) 786-7860
DOUMIT, Mark L.	D	19	PO Box 40600, Olympia 98504-0600 Olympia: (360) 786-7870
DUNN, Jim	R	17	13215 SE Mill Plain Blvd., Suite C8 Vancouver 98684 Olympia: (360) 786-7976
DUNSHEE, Hans	D	39	506 10th St., Snohomish 98290 Olympia: (360) 786-7804
EDMONDS, Carolyn	D	32	PO Box 40600, Olympia 98504-0600 Olympia: (360) 786-7880
EDWARDS, Jeanne	D	1	PO Box 40600, Olympia 98504-0600 Olympia: (360) 786-7900
EICKMEYER, William "Ike"	D	35	PO Box 40600, Olympia 98504-0600 Olympia: (360) 786-7902
ERICKSEN, Doug	R	42	PO Box 5191, Bellingham 98227 Olympia: (360) 786-7980
ESSER, Luke	R	48	16237 NE First St., Bellevue 98008 Olympia: (360) 786-7936
FISHER, Ruth	D	27	PO Box 40600, Olympia 98504-0600 Olympia: (360) 786-7930
FROMHOLD, Charles W. "Bill"	D	49	11406 SE 19th St., Vancouver 98664 Olympia: (360) 786-7924
GOMBOSKY, Jeff	D	3	708 W 17th St., Spokane 99203 Olympia: (360) 786-7946
GRANT, Bill	D	16	527 Boyer Avenue, Walla Walla 99362 Olympia: (360) 786-7828
HAIGH, Kathy	D	35	81 SE Walker Park Rd., PO Box 819 Shelton 98586 Olympia: (360) 786-7966
HANKINS, Shirley	R	8	1852 Stevens Dr., Richland 99352 Olympia: (360) 786-7882
HATFIELD, Brian	D	19	226 Fir St., Raymond 98577 Olympia: (360) 786-7806
HUNT, Sam	D	22	4030 San Mar Dr. NE, Olympia 98506 Olympia: (360) 786-7992
HURST, Christopher	D	31	62504 Indian Summer Way E Enumclaw 98022 Olympia: (360) 786-7866
JACKLEY, Brock	D	26	347 North Callow, Manchester 98353 Olympia: (360) 786-7802
JARRETT, Fred	R	41	2729 73rd Ave. SE, Mercer Island 98040 Olympia: (360) 786-7894
KAGI, Ruth	D	32	19553 35th NE, Lake Forest Park 98155 Olympia: (360) 786-7910
KEISER, Karen	D	33	25657 Marine View Dr. S Des Moines 98198 Olympia: (360) 786-7868
KENNEY, Phyllis	D	46	5001 NE 90th Pl., Seattle 98115 Olympia: (360) 786-7818
KESSLER, Lynn	D	24	PO Box 40600, Olympia 98504-0600 Olympia: (360) 786-7904



---

## Roster of Members

---

### Washington State House of Representatives

(98 Members 49 Republicans and 49 Democrats)

Name	Pol.	Dist.	Address
KIRBY, Steve	D	29	PO Box 11106, Tacoma 98411 Olympia: (360) 786-7996
LAMBERT, Kathy	R	45	PO Box 1138, Woodinville 98072 Olympia: (360) 786-7878
LANTZ, Patricia T.	D	26	PO Box 40600, Olympia 98504-0600 Olympia: (360) 786-7964
LINVILLE, Kelli	D	42	1155 N State St., Suite 324 Bellingham 98225 Olympia: (360) 786-7854
LISK, Barbara	R	15	2303 Houghton Rd., Zillah 98953 Olympia: (360) 786-7874
LOVICK, John	D	44	PO Box 40600, Olympia 98504-0600 Olympia: (360) 786-7892
MARINE, Joe	R	21	9244 49th Ave. W, Mukilteo 98275 Olympia: (360) 786-7972
MASTIN, Dave	R	16	26 E Main St., Suite 5, Walla Walla 99362 Olympia: (360) 786-7836
McDERMOTT, Joe	D	34	PO Box 16254, Seattle 98116 Olympia: (360) 786-7952
McINTIRE, Jim	D	46	12345 30th Ave. NE, Suite E, Seattle 98125 Olympia: (360) 786-7886
McMORRIS, Cathy	R	7	PO Box 555, Colville 99114 Olympia: (360) 786-7988
MIELKE, Tom	R	18	25106 NE Dublin Rd. Battle Ground 98604 Olympia: (360) 786-7850
MILOSCIA, Mark	D	30	30720 19th Ave. S, Federal Way 98003 Olympia: (360) 786-7898
MITCHELL, Maryann	R	30	33010 39th Pl. SW, Federal Way 98023 Olympia: (360) 786-7830
MORELL, Dave	R	25	PO Box 73596, South Hill 98373 Olympia: (360) 786-7968
MORRIS, Jeff	D	40	377 Lakeside Dr., Sedro Woolley 98284 Olympia: (360) 786-7970
MULLIKEN, Joyce	R	13	27 Apple Lane, Ephrata 98823 Olympia: (360) 786-7808
MURRAY, Ed	D	43	324 15th Ave. E, Suite 103, Seattle 98112 Olympia: (360) 786-7826
O'BRIEN, Al	D	1	PO Box 40600, Olympia 98504-0600 Olympia: (360) 786-7928
OGDEN, Val	D	49	3118 Royal Oaks Dr., Vancouver 98662 Olympia: (360) 786-7872
PEARSON, Kirk	R	39	105 Pearson Ln., Monroe 98272 Olympia: (360) 786-7816
PENNINGTON, John E.	R	18	PO Box 69, Carrolls 98609 Olympia: (360) 786-7812
PFLUG, Cheryl	R	5	PO Box 1505, Issaquah 98207 Olympia: (360) 786-7852
POULSEN, Erik	D	34	PO Box 40600, Olympia 98504-0600 Olympia: (360) 786-7938
QUALL, Dave	D	40	PO Box 1142, Mount Vernon 98273 Olympia: (360) 786-7800
REARDON, Aaron	D	38	2731 Wetmore Ave., Suite 101 Everett 98201 Olympia: (360) 786-7864

---

## Roster of Members

---

### Washington State House of Representatives

(98 Members 49 Republicans and 49 Democrats)

Name	Pol.	Dist.	Address
ROACH, Dan	R	31	PO Box 1718, Auburn 98071 Olympia: (360) 786-7846
ROCKEFELLER, Phil	D	23	PO Box 40600, Olympia 98504-0600 Olympia: (360) 786-7934
ROMERO, Sandra	D	22	PO Box 40600, Olympia 98504-0600 Olympia: (360) 786-7940
RUDERMAN, Laura	D	45	PO Box 40600, Olympia 98504-0600 Olympia: (360) 786-7822
SANTOS, Sharon Tomiko	D	37	PO Box 28992, Seattle 98118 Olympia: (360) 786-7944
SCHINDLER, Lynn	R	4	6315 N Campbell Rd. Otis Orchards 99027 Olympia: (360) 786-7984
SCHMIDT, Dave	R	44	3003 168th St. SE, Bothell 98012 Olympia: (360) 786-7982
SCHOESLER, Mark	R	9	PO Box 40600, Olympia 98504-0600 Olympia: (360) 786-7844
SCHUAL-BERKE, Shay	D	33	PO Box 40600, Olympia 98504-0600 Olympia: (360) 786-7834
SEHLIN, Barry	R	10	2434 W Hastie Lake Rd. Oak Harbor 98277 Olympia: (360) 786-7884
SIMPSON, Geoff	D	47	16624 SE 254 Place, Covington 98402 Olympia: (360) 786-7918
SKINNER, Mary	R	14	PO Box 40600, Olympia 98504-0600 Olympia: (360) 786-7810
SOMMERS, Helen	D	36	PO Box 40600, Olympia 98504-0600 Olympia: (360) 786-7814
SUMP, Bob	R	7	PO Box 40600, Olympia 98504-0600 Olympia: (360) 786-7908
TALCOTT, Gigi	R	28	1320 Sunset Dr. S, Tacoma 98465 Olympia: (360) 786-7890
TOKUDA, Kip	D	37	1265 S Main St., Suite 310, Seattle 98144 Olympia: (360) 786-7838
VAN LUVEN, Steve	R	48	PO Box 3625, Bellevue 98009 Olympia: (360) 786-7848
VELORIA, Velma	D	11	1511 S Ferdinando St., Seattle 98108 Olympia: (360) 786-7862
WOOD, Alex	D	3	2807 E Upriver Dr. #2, Spokane 99207 Olympia: (360) 786-7888
WOODS, Beverly	R	23	PO Box 2466, Poulsbo 98370 Olympia: (360) 786-7842

---

## Representatives

---

### HOUSE OF REPRESENTATIVES OF THE STATE OF WASHINGTON



**CLYDE BALLARD**  
**Co-Speaker (R)**

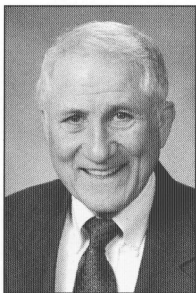


**FRANK CHOPP**  
**Co-Speaker (D)**

---

## Representatives

---



### **AHERN, JOHN E.**

**Republican.** Serving his first term in the House, John represents the 6th District, including parts of north and south Spokane and west Spokane County. A veteran of the US Army, he is a graduate of the University of Denver. John is the owner and founder of Janco Products, a copier and office supply business, and previously worked in sales and sales management. He is very active in the Boy Scouts, Kiwanis and the Knights of Columbus. He and his wife of 37 years, Nancy, have three children and three grandchildren.



### **ALEXANDER, GARY C.**

**Republican.** Representative from the 20th District covering portions of Pierce, Thurston and Lewis counties. Gary received his BA from UW and has an MBA from Pacific Lutheran University. His business career spans 30 years as an industrial engineer for Boeing, financial manager with five state agencies, CFO of Behavioral Health Resources, Comptroller of Philip Environmental Services, and currently as Deputy Auditor for Thurston County. He is a former port commissioner, past president of Kiwanis, and past board member of both the Thurston County Economic Development Council and Washington State Employees Credit Union. Gary and his wife, Donna, live in Thurston County.



### **ANDERSON, GLENN**

**Republican.** Glenn represents the 5th District – east and south King County including the Sammamish Plateau, Issaquah, Snoqualmie Valley and Maple Valley. A business consultant, he has 18 years experience in banking and working with small business and emerging growth companies. Glenn has an economics degree from the University of Alabama with emphasis on international trade and community development. He is a board member for Children's Services of Snoqualmie Valley and the Washington National Parks Fund. He is active in several chambers of commerce and Rotary. Glenn and his wife Elisabeth, a telecommunications professional, make their home in Fall City.



### **ARMSTRONG, MIKE**

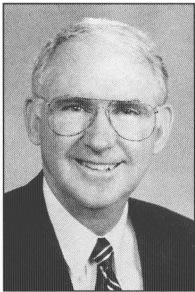
#### **Republican Assistant Whip**

**Republican.** Mike, a fourth-generation Wenatchee Valley resident, represents the 12th District, which comprises Chelan and Douglas counties and parts of Grant and Okanogan counties. Mike supervises bridge and maintenance crews for the Department of Transportation. He was elected to the Wenatchee School Board in 1997 and has been its president, vice president, and legislative representative. Mike served on legislative committees for the Wenatchee Chamber of Commerce and Washington State School Directors Association, and as president of his PTA and the Music Theatre of Wenatchee. Married in 1979, Mike and Mary have three children: Abe, 14; Cassandra, 11; and Maureen, 9.

---

## Representatives

---



### **BALLARD, CLYDE**

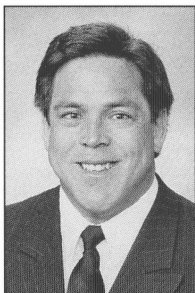
#### **Co-Speaker**

**Republican.** Representative from the 12th District, composed of Chelan and Douglas counties, as well as parts of Okanogan and Grant counties. Clyde is serving his 10th term in the House. He and his wife, Ruth, live in East Wenatchee and have three grown sons and seven grandchildren. They are involved in community work and their church.



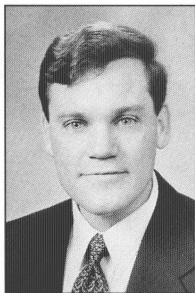
### **BALLASIOTES, IDA**

**Republican.** Representative from the 41st District, which includes Mercer Island, and parts of Bellevue, Issaquah, Newcastle and Renton. Ida is serving her fifth term in the Legislature, where she has been actively involved in issues regarding victims' rights, criminal justice, trade and economic development. Ida holds a B.A. in urban studies from the University of Puget Sound. Long-time retail business owners and residents of Mercer Island for 27 years, Ida and her husband, Andy, have three grown children and five grandchildren.



### **BARLEAN, KELLY**

**Republican.** Representative from the 10th District, including all of Island County, northwest Snohomish County and southwest Skagit County. His family is originally from Alger, WA, in northern Skagit County. After high school, Kelly enlisted in the U.S. Air Force Security Service where he served as an intelligence analyst. Kelly was appointed to the USAF Academy and was commissioned in the U.S. Army Infantry after graduation. He served as a Screaming Eagle of the 101st Airborne Division. After leaving the Army, Kelly earned a law degree from the University of Colorado. He returned to Washington state and opened a private law practice in Everett. He currently resides in Langley with his wife Tara and their two children. He served on the Langley City Council for four years.



### **BENSON, BRAD**

**Republican.** 6th District. Owned and operated Hansen's Creamery from 1992-97. Adjunct teacher, economics, Spokane Community College (1998). Previously a branch manager, trust officer and assistant vice president at Seafirst National Bank (1988-1996). Served as a Captain in the U.S. Air Force (1982-88), currently an officer in the Washington Air National Guard, 141st Air Refueling Wing, Fairchild AFB. Earned a B.S. degree from the California State University and a master's degree from the University of Southern California. Community activities include Habitat for Humanity, Spokane Hoopfest Tournament and Trinity Baptist Church. Brad and his wife, Jill have four children: Ashley, Patrick, Graham and Hannah.

---

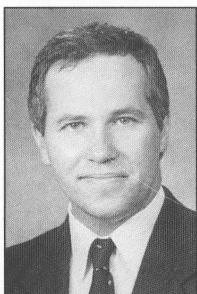
## Representatives

---



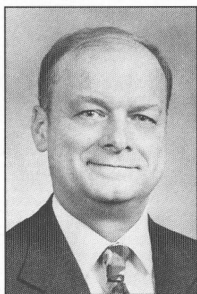
### **BERKEY, JEAN**

**Democrat.** Appointed to the 38th District seat held by the late Representative Pat Scott who died January 7, 2001. Jean grew up and lives in Everett, and has been active in political and community activities in Snohomish County for more than 20 years. She has served as a board member for a number of organizations including the Everett Senior Center, the Everett Medic 1 Foundation, United Way and was chair of the Everett Community College Board of Trustees. Jean has a bachelor's degree in business administration from the University of Washington. She had previously worked in accounting, engineering and human resources.



### **BOLDT, MARC**

**Republican.** Representative from the 17th District, which includes East Clark County and the majority of Skamania County. Marc is a native of Clark County. Graduate of Evergreen High School and Yakima Valley College. Serving his fourth term in the House of Representatives, Marc is a former state director for the Washington Farm Bureau and is active in a number of community groups and youth activities. He works as a truck driver for a Clark County concrete firm. Marc and his wife Dawn, have five children



### **BUCK, JIM**

#### **Republican Caucus Chair**

**Republican.** A 1971 West Point graduate, Jim served as a field artillery officer, resigning his commission in 1976 at Fort Lewis. He returned to make a permanent home in Washington state in 1978. During his career as a civil engineer, Jim worked on nuclear, petro-chemical, public works, and private construction projects. Principal author of the 1998 Salmon Recovery Act, the fourth-term lawmaker represents the 24th District, which includes Jefferson and Clallam counties and part of Grays Harbor County. A resident of the North Olympic Peninsula, Jim and his wife, Donna, have two daughters, Wendy and Betsy.



### **BUSH, ROGER**

**Republican.** Third-term representative from the 2nd District, which includes DuPont, Roy, Spanaway, Orting, Graham, and South Prairie. Roger is a graduate of Seattle Pacific University and a 5th-grade teacher in the Bethel School District. He and his wife of 32 years, Cheryl, have one daughter, Jennifer, who graduates from Northwest Nazarene University in 2001. The Bush family is active in the Puyallup Church of the Nazarene and various community organizations. Roger has been a member of the Attorney General's Task Force on Consumer Privacy and the Joint Select Committee on Veterans' and Military Affairs.

---

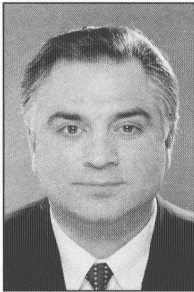
## Representatives

---



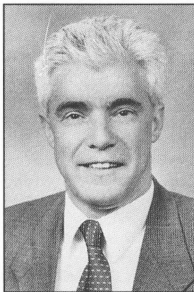
### CAIRNES, JACK

**Republican.** Represents the 47th District, including Black Diamond, Covington and parts of Auburn, Kent and Renton. Serving his fourth term, he has been a King County resident since 1952. Jack earned a business administration degree from Cameron University and a master's degree in counseling from Ball State University. Jack is a former general contractor, drug and alcohol counselor, personnel and community affairs director and teacher/facilitator. He served two tours in Vietnam as an US Army officer and was recalled to serve in Desert Shield and Desert Storm. Jack and his wife, Andrea, have four children and live in Covington.



### CAMPBELL, TOM

**Republican.** In his fourth term from the 2nd District, Tom serves residents of Spanaway, Puyallup's South Hill, Graham, Roy, Dupont, Orting and south Pierce County. Formerly a captain in the U.S. Army Special Forces, he has a bachelor's degree in police science from Seattle University and a Doctor of Chiropractic degree from Life University in Marietta, Ga. Tom has practiced at his chiropractic clinic in Spanaway for 16 years. He was appointed to the Chiropractic Disciplinary Board by Gov. Booth Gardner and served as vice chairman. Tom and his wife Lynn, a professional artist, reside on a small farm near Roy.



### CARRELL, MIKE

**Republican.** Representative Carrell is an educator, community leader and state legislator. He is also a life-long Tacoma resident, teaching in the Tacoma area for over 30 years. He has taught science at Franklin Pierce High School and Pierce College. Rep. Carrell is serving his fourth term in the state Legislature representing the 28th District, which includes Lakewood, Fircrest, University Place and Steilacoom in western Pierce County. He also serves the community through civic, church and professional organizations. Rep. Carrell received his B.A. in Education from Pacific Lutheran University. Married to Charlotte, he has three sons and four grandchildren.



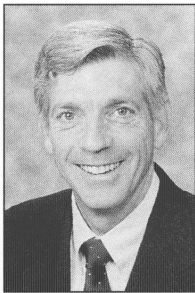
### CASADA, SARAH

**Republican.** Rep. Casada has been a small business owner, telecommunications manager at Pacific Lutheran University, a vocational-technical business instructor, and a leader in state and county government. She is a long-time resident of South Hill Puyallup. Rep. Casada originally served three terms in the Legislature from 1990 to 1997 representing the 25th District, which includes Puyallup, South Hill, Sumner, Milton, Bonney Lake, Fife and Pacific. She has most recently served on the Pierce County Council, from 1997 through 2000, including as Executive Pro-tem and Chair. Rep. Casada is active in the Puyallup Salvation Army and a member of Kiwanis.

---

## Representatives

---



### CHANDLER, BRUCE

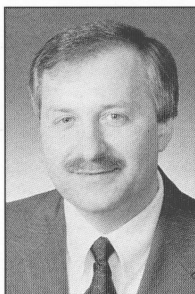
#### Assistant Republican Floor Leader

**Republican.** Representing the 15th District, which includes all of Klickitat and parts of Yakima, Skamania, and Benton counties. Serving his second term in the Legislature. Bruce has served on the board of the Washington Growers League, and is active in the Washington State Horticultural Association, Washington State Farm Bureau, and National Federation of Independent Business. Bruce has long been involved in community youth programs, his church and local politics. Bruce and his wife, Julie, have three children. With more than 22 years experience in the fruit industry, Bruce and his family continue to work their farm near Granger.



### CHANDLER, GARY

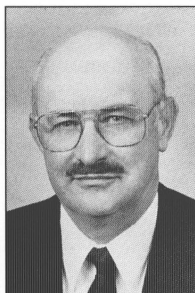
**Republican.** Gary is serving his sixth term from the 13th District, representing parts of Grant, Adams, Kittitas and Yakima counties. A central Washington resident since 1958, he is a hay farmer, apple orchardist, owner of a Mailboxes Etc. business and former farm equipment dealer. Gary was a Grant County commissioner and chairman of the Big Bend Economic Development Council and Grant County Clean Air Commission. He served on the Grant County and Moses Lake planning commissions and is a 16-year Moses Lake reserve police officer. An active First Baptist Church member, Gary and wife Deborah have two children, Jeremy and Lisa.



### CHOPP, FRANK

#### Co-Speaker

**Democrat.** A life-long Washington resident, Frank is serving his fourth term representing the 43rd Legislative District. A former Minority Floor Leader and House Minority Leader, Frank was elected Democratic Speaker of the House in January 1999. As co-speaker, he co-chairs the Rules and Executive Rules Committees. For 16 years, Frank was executive director of a non-profit community service organization assisting thousands of people annually; he now serves as president. He is a 1975 magna cum laude graduate of the University of Washington. Frank and his wife, Nancy Long, live in Seattle's Wallingford neighborhood and have two children, Nate and Ellie.



### CLEMENTS, JIM

**Republican.** A Yakima native serving his fourth term, Jim represents the 14th District, which encompasses Yakima, Selah, West Valley, Union Gap and part of Gleeed. He is corporate president of his family's farms in Moxee. Jim served six years as a Washington State Apple Commissioner, is past president of the Washington Association of Apple Growers, and was a radio agricultural commentator. A former teacher and high school principal, he has a master's degree in school administration. Jim is a Yakima Chamber of Commerce and Yakima River Watershed Council member. He and wife Marjory reside in Selah and have two children.



---

## Representatives

---



### **CODY, EILEEN L.**

**Democrat.** Represents the 11th District, which includes the Duwamish, I-5 corridor from Pioneer Square in Seattle south to Tukwilla, Skyway and Renton. Serving her fourth term, Eileen lives in the West Seattle area with her husband, Tom Mitchell. Eileen is a registered nurse, specializing in rehabilitation and works as a staff nurse at Group Health Cooperative. She is a founding member and former Treasurer of District 1199 Northwest Hospital and Health Care Workers Union, SEIU, AFL-CIO.



### **CONWAY, STEVE**

**Democrat.** Representative from the 29th District, South Tacoma and Parkland in Pierce County. Graduate of the University of Oregon with master's and Doctor of Philosophy degrees in history. Fulbright Scholar at the London School of Economics. Business agent for the United Food and Commercial Worker's Union, Local 81. Steve and his wife, Georgia, have two sons, Levin and Collin.



### **COOPER, MIKE**

**Democrat.** Third-term representative from the 21st District, which includes Edmonds, Lynwood, Mukilteo, and a portion of Mountlake Terrace, Woodway, Snohomish County. Attended Edmonds Community College and Linfield College. Employed by the Shoreline Fire Department. Serves on Sno-Isle Skills Center Fire Service Technology Board, the North Puget Sound Oil Spill Risk Panel, and is secretary of the Washington State Council of Fire Fighters Burn Foundation.



### **COX, DON**

**Republican.** Appointed in January 1999. Serving his second term representing the 9th District including all or parts of Adams, Asotin, Spokane and Whitman counties. Don is director of the Rural Education Center and an associate professor at Washington State University. He was superintendent of the Colfax School District from 1990 to 1998 and has had a 35-year career as a teacher, counselor and administrator in various Washington public schools. He and his wife, Sherry, live in Colfax.

---

## Representatives

---



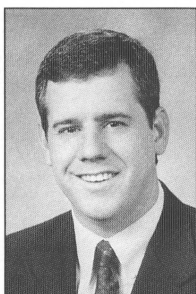
### **CROUSE, LARRY**

**Republican.** Rep. Crouse is a life-long Washingtonian who has lived in the Spokane area since 1974. He is serving his fourth term representing the Spokane Valley in the 4th District, and for the past four years he has been chairman of the Eastern Washington Caucus. He supports various charitable organizations in the Spokane area. Rep. Crouse brings a diverse professional background to the Legislature that includes small business owner, and machinist and supervisor for Kaiser Aluminum in Trentwood. He and his wife, Peggy, have been married for 34 years and have two grown daughters.



### **DARNEILLE, JEANNIE**

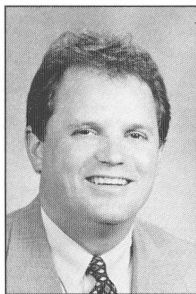
**Democrat.** Representative from the 27th District including North and East Tacoma, Fife, and part of Puyallup. A dedicated community leader, her service on community boards includes Tacoma Community House, the Pierce County Human Services Coalition, and the Community Breast Cancer Awareness Center. Jeannie worked for a decade in colleges and universities before directing non-profit human services programs at the YWCA and Emergency Food Network. She is currently the Pierce County AIDS Foundation executive director. She received her B.A. from Western Washington University and her M.Ed. from Colorado State University. Jeannie and husband Howard Graham have three sons and live in Tacoma.



### **DeBOLT, RICHARD**

#### **Republican Floor Leader**

**Republican.** Third-term representative from the 20th District, which includes portions of Lewis, Pierce and Thurston counties. He is the communications and community relations manager for the TransAlta steam-electric plant and coal mine in Centralia and former executive director of The Chamber, a Lewis County business organization. A graduate of the University of Wyoming, Richard is active in the United Way, Elks Club, Centralia Rotary and other civic organizations. Richard and his wife, Amylee, live in Chehalis with their two children, Sophie and Austin.



### **DELVIN, JEROME**

**Republican.** Jerome is serving his fourth term from the 8th District, representing the Mid-Columbia region that includes Richland and Kennewick. A life-long resident of the Tri-Cities, he has 26 years experience in law enforcement, with 21 years as a Richland police officer. Jerome served three years in the military and has a criminal justice degree from Columbia Basin College. He is a past member of the Washington State Council of Police Officer's executive board and past president of the Richland Police Guild and Benefit Association. Jerome and his wife Josie enjoy traveling. He also likes running, mountain climbing and snow skiing.

---

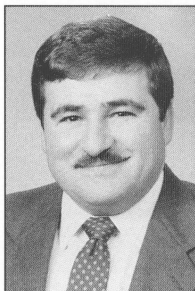
## Representatives

---



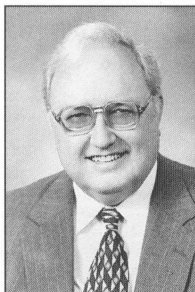
### DICKERSON, MARY LOU

**Democrat.** Mary Lou (36th District) is a community leader who helped found Treehouse and the Ballard Family Center. She holds a master's degree in social work and has completed postgraduate work in business administration and public administration. Now working as a writer, Mary Lou has also served as the executive director for the Bellevue Schools Foundation, a program analyst for King County and as the leader of major nonprofit agencies. Mary Lou lives in north Seattle with her husband, John Birnel, and 17-year-old daughter, Chloe.



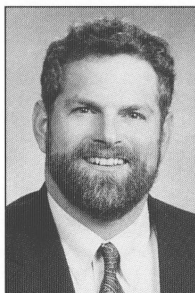
### DOUMIT, MARK LAWTON

**Democrat.** Third-term representative from the 19th District, which includes Pacific and Wahkiakum counties, and parts of Grays Harbor and Cowlitz counties. Commercial fisherman; co-owner of 240-acre beef ranch and commercial tree farm. Wahkiakum County Commissioner two terms (eight years). Bachelor of Arts in Business Administration, Washington State University (1984); University of Copenhagen, Denmark, International Business; Lower Columbia College, Longview, WA. Mark and his wife, Mindy, have three sons – Matthew (12), Benjamin (10), and David (8). They reside in Cathlamet and attend St. Catherine's Parish.



### DUNN, JIM

**Republican.** Descending from both Washington state pioneer and Alaskan Native American families, Rep. Dunn has been a resident of Vancouver since 1977. He also served in the U.S. Air Force during the Vietnam War. He is serving his third term representing Clark and Skamania counties in the 17th District. Rep. Dunn actively serves in the Knights of Columbus, American Legion, and the Moose and Elks lodges. He was educated at Louisiana State University. Rep. Dunn is a retired computer consultant. He and his wife, Joan, have been married for 37 years. They have two children and four grandchildren.



### DUNSHEE, HANS

**Democrat.** Hans represents the 39th District, which stretches through Eastern Snohomish County and includes the Stevens Pass area. His principal goal as a lawmaker is to create opportunities for middle-class families and seniors. He is a small business owner who designs septic systems for rural homeowners. A graduate of the University of Washington, Hans received his master's degree in political science and environmental policy from Western Washington University. He and his wife Terry, a teacher in the Snohomish School District, live in Snohomish with his step-daughter Erin, 14.

---

## Representatives

---



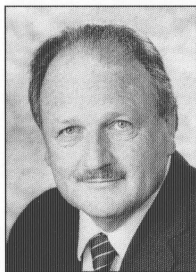
### EDMONDS, CAROLYN

**Democrat.** Serving her second term representing the 32nd District (King County), including Kenmore, Lake Forest Park, north Seattle and Shoreline. Received her bachelor's degree in business administration from San Jose State University and a master's degree in public affairs from the University of Washington. Ten years of corporate experience plus seven years as a local small-business consultant. Community service includes: vice chair, Shoreline Planning Commission; campaign manager, Shoreline Incorporation; board president, Shoreline-Lake Forest Park Senior Center; treasurer, Shoreline Schools Levy; board president, Shoreline Historical Museum; co-president, Sunset PTA Council; and board member, Rotary. Carolyn and her husband Jim Parsons, a Boeing worker, live in Shoreline with their two children.



### EDWARDS, JEANNE

**Democrat.** Second-term representing the 1st District, including parts of northeast King and south Snohomish counties. Jeanne is a former newspaper reporter and editor, health administrator, and health-care consultant. Jeanne was a member of the Bothell City Council for eight years and served while the state Growth Management Act was being implemented in Bothell and King and Snohomish counties. She served on the board of Community Transit, the Snohomish County Board of Health, the King County Human Services Roundtable, and chaired the Washington State Transit Association. Jeanne and her husband, Bill, have four children and five grandchildren.



### EICKMEYER, BILL

**Democrat.** Representative from the 35th District, comprised of all of Mason County, and parts of Kitsap, Grays Harbor and Thurston counties. Bill, who is the Executive Director of the Sound Institute of Family and Children Services, is serving his second full term in the Legislature. Bill has two daughters, Mary and Sara, and two sons, Ezra and Johan. A graduate of Western Washington University, he is a former member of the North Mason School District Board of Directors, the Bremerton Area Chamber of Commerce Board of Directors, and the Washington Association of Child Caring Agencies Board of Directors.



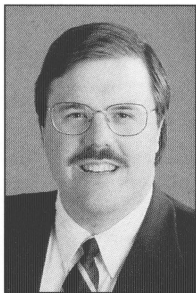
### ERICKSEN, DOUG

**Republican.** Rep. Ericksen, his young daughter, Elsa, and his wife, Tasha, are lifetime residents of Bellingham. He is serving his second term representing the 42nd District, which includes Bellingham, Lynden, Ferndale, Blaine, Sumas, Everson, Deming, Birch Bay, and Northern Whatcom County. Rep. Ericksen's unique Future Leaders program gives students an opportunity to experience the legislative process first-hand. He has served as a Legislative Affairs Coordinator at the Department of Fish and Wildlife and as a policy analyst for the Washington State Senate. Rep. Ericksen received his Bachelor's degree from Cornell University and master's degree from Western Washington University.

---

## Representatives

---



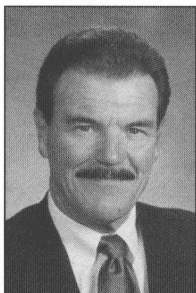
### ESSER, LUKE

**Republican.** Serving a second term as Representative from the 48th District, which includes parts of Bellevue, Redmond, Kirkland, and the Point Communities. An attorney since 1989, Luke grew up in the 48th District and attended the local public schools. He earned his law degree, and two bachelor's degrees, at the University of Washington. A former King County prosecuting attorney for the last five years, Luke has served as a budget specialist at the King County Council. Luke is a member of the Bellevue, Kirkland and Redmond Chambers of Commerce, and in his spare time works as a freelance sportswriter.



### FISHER, RUTH

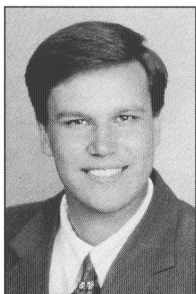
**Democrat.** Serving her tenth term representing the 27th District in Pierce County including north and east Tacoma, Fife and part of Puyallup. Born and educated in Tacoma, she attended the University of Puget Sound. Ruth has served as chair, co-chair and ranking member of the House Transportation Committee and Legislative Transportation Committee. Recipient of the Women's Transportation Seminar Achievement Award, the Good Roads Association's Legislator of the Year and the Transit Association's Recognition Award. Ruth is active in Pierce County civic groups and is a former planning commissioner. She is the mother of a son and a daughter.



### FROMHOLD, CHARLES W. "BILL"

#### Assistant Democratic Whip

**Democrat.** Representative from the 49th District, including Vancouver and parts of Clark County. Bill is a former president and CEO of the Greater Vancouver Chamber of Commerce, investment banker, and superintendent of Educational Service District 112 where he initiated a child care program serving Clark County. Bill serves on several boards, including the WSU Foundation, Clark College, Leadership Clark County, and the Evergreen School District Foundation. He received his associate degree from Olympic College, and his bachelor and master's degrees from the University of Puget Sound. An Army veteran, Bill has two daughters and lives in Vancouver.



### GOMBOSKY, JEFF

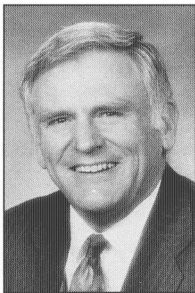
#### Democratic Floor Leader

**Democrat.** Jeff is serving his third term representing the 3rd District, which is the central area of Spokane. He is a graduate of Spokane Falls Community College and Eastern Washington University. Jeff was formerly the director of the Institute for Neighborhood Leadership at the Northeast and West Central Community Centers in Spokane and currently works as a consultant on community and economic development issues. He and his wife, Melissa, are the parents of a son, Devin, and are expecting a second child in 2001.

---

## Representatives

---



### **GRANT, WILLIAM A.**

#### **Democratic Caucus Chair**

**Democrat.** Representative and life-long resident of the 16th District, which includes Walla Walla, Franklin, Columbia, Garfield, and most of Asotin counties. Bill and his wife, Nancy Grant, are both graduates of Whitman College. They have four children and eleven grandchildren, and they operate a wheat farm that has been in the family for four generations. Bill is serving his eighth term in the House.



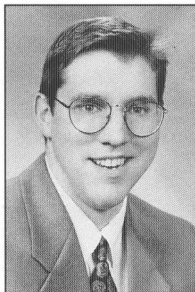
### **HAIGH, DR. KATHRYN M.**

**Democrat.** Representative from the 35th District which includes Mason County and parts of Kitsap, Grays Harbor and Thurston counties is serving her second term. She and her husband, Gary, own and operate Haigh Veterinarian Medical Hospital in Shelton, where they live with their two sons, Eddie and Dan. Kathy is a school board director in Shelton and is past president of the Washington State Veterinarian Medical Association.



### **HANKINS, SHIRLEY**

**Republican.** Serving her ninth term in the House, Shirley represents the 8th District, including Richland, Kennewick, Finley, West Richland and Benton City. A graduate of Washington State University and Columbia Basin College, Shirley is retired from the Westinghouse Hanford Company. A resident of Richland for 44 years, she remains very active in her community, working closely with the Richland Riverside Rotary, the American Nuclear Society and the Central United Methodist Church. Her achievements have led to inclusion in the World's Who's Who of Women and the Who's Who of American Women.



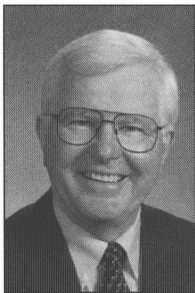
### **HATFIELD, BRIAN**

**Democrat.** Fourth-term representative from the 19th District, comprising all of Pacific and Wahkiakum counties, and parts of Cowlitz and Grays Harbor counties. Brian is a graduate of Raymond High School, Grays Harbor College, and Washington State University, with a B.A. in Public Administration (cum laude). A life-long district resident, Brian is a member of both the Lower Columbia and the Coastal Community Action Councils, the Raymond Elementary PTA, the Elks, Kiwanis and the New Life Fellowship Church of Raymond. Brian and his wife, Freddie, have two children, Tarrah and Brady.

---

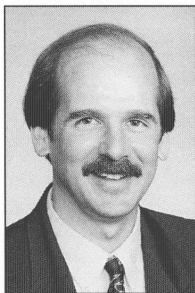
## Representatives

---



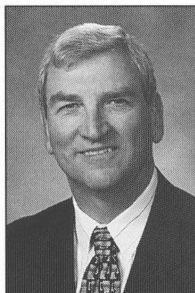
### HUNT, SAM

**Democrat.** Representative from the 22nd District, including Olympia, Lacey, and parts of Tumwater and unincorporated northern Thurston County. Sam is a former legislative liaison with the state Department of Information Services, and he has been a special assistant to the governor on K-12 education issues. He has also been a staff director for the Senate majority leader. Sam currently serves on the North Thurston School Board, and he received his bachelor's degree and teaching certificate from Washington State University. Sam and his wife, Charlene, have lived in Olympia for 20 years, and they have two children.



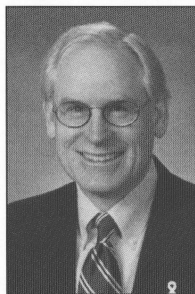
### HURST, CHRISTOPHER A.

**Democrat.** Representing the 31st District which includes Auburn, Kent, Enumclaw, Buckley and the Bonney Lake/Lake Tapps area of Pierce County. Serving his second term, Chris lives in the Enumclaw area with April, his wife of 22 years. They have two children Kimberly and Andrew. Chris is a commissioned law enforcement officer and has served in that profession for the last 20 years. He has been assigned to investigations for 14 years. Chris is also an FAA certified Airline Transport Pilot and multi-engine instrument flight instructor. Prior to working as a police officer, Chris owned and operated a forest products company.



### JACKLEY, BROCK

**Democrat.** Representative from the 26th District including Gig Harbor, Key Peninsula, Port Orchard, and parts of Bremerton and Tacoma. Brock has been a successful small business owner for 22 years and is an active member of the Bremerton Chamber of Commerce and the Mayor's Committee to Clean Up Bremerton. He was also an instructor at Olympic Community College for 24 years. Brock earned his B.A. and M.A. from the University of Idaho and is a U.S. Army veteran. He and his wife, Lori, have four children and live in Manchester.



### JARRETT, FRED

**Republican.** Representing the 41st District, including Mercer Island, Newcastle and parts of Bellevue, Issaquah and Renton. Fred is serving his first term. A graduate of Mercer Island schools, he was a member of the Mercer Island City Council for sixteen years and served two terms as Mayor. Fred earned a B.A. in Finance from Washington State University and an M.B.A. from Seattle University. Served as an officer in the United States Air Force where he received the Air Force Commendation Medal (1971-1974), and has worked for Boeing in finance, manufacturing and systems management the past 26 years. He and his wife Susan have four children and one grandchild.

---

## Representatives

---



### KAGI, RUTH

**Democrat.** Ruth is serving her second term, representing the 32nd District. She has been a community volunteer and leader over the last fifteen years, serving as Vice President of the League of Women Voters of Washington and Chair of the Washington Council for Prevention of Child Abuse and Neglect. Ruth has served as Co-Vice Chair of the Children and Family Services Committee and on the Appropriations and Corrections committees. She received her B.A. from the University of Washington and M.P.A. from Syracuse University. Ruth and her husband, Mark, have two children and live in Lake Forest Park.



### KEISER, KAREN

#### Democratic Caucus Vice Chair

**Democrat.** Represents 33rd District -- Des Moines, Normandy Park, SeaTac and parts of Burien, Kent, Renton and Tukwila. Appointed to the Legislature in January 1996, and first elected in November 1996. A graduate of the University of California, Karen has a B.A. in political science and an M.A. in journalism. She is communications director for the Washington State Labor Council and formerly worked as a reporter and producer at KSTW-TV. Member of the Highline Community College Board of Trustees. Karen is married to Stevan Smith. They have three children. Their oldest son Dave is in the U.S. Army, stationed in Germany.



### KENNEY, PHYLLIS GUTIERREZ

**Democrat.** Representative from the 46th District (northeast Seattle) serving her third term. Her community activities include: past chair of the board of trustees for Seattle Community College; past president of the Washington State Hispanic Chamber of Commerce; advisory board member of Women for Healthcare Education Reform and Equity (WHERE); and presidential delegate to the White House Conference on Small Business. Phyllis and her husband Larry have 10 children and 18 grandchildren.



### KESSLER, LYNN

#### Co-Majority Leader

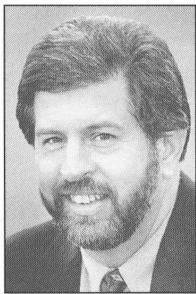
**Democrat.** Representing the 24th District, including Clallam and Jefferson counties, and parts of Grays Harbor. Lynn, a life-long Washington resident, is serving her fifth term. She serves on the Governor's Commission on Early Learning and the Washington Arts Commission. Lynn has been a small business owner, and executive director of the United Way of Grays Harbor. Community activities include Aberdeen Rotary (past president); board of trustees, Grays Harbor College (past president); board of directors, Community Health Care Organization; board of directors, Grays Harbor Economic Development Council. Married to Keith Kessler. Mother of Bill, Chris, Brad, and Jamie. Grandmother of Kyle.



---

## Representatives

---



### KIRBY, STEVE

**Democrat.** A life-long resident of the 29th District including South Tacoma and Parkland. Steve has served nearly 20 years on the Tacoma City Council, where he chaired the public safety committee. A community leader, Steve has served on the Tacoma-Pierce County Board of Health and the Pierce Transit Board of Directors. He has served as president of the Southeast Tacoma Optimist Club and chair of the Tacoma Community Development Advisory Committee. He is an honorary librarian for Local 120, an honorary member of Tacoma Fire-Fighters Local 31 and Tacoma Police Local 6. Steve is a single parent living in Tacoma.



### LAMBERT, KATHY

**Republican.** Rep. Lambert is serving her fourth term representing the 45th District. She earned her Business Education degree from the University of Washington. She is a former small business owner and author of a children's history book. She taught elementary school for 16 years in the Monroe School District. Rep. Lambert was named "Most Bipartisan Legislator" by the Family Law Section of the Bar in 1996, and "Family Advocate of the Year" by the Behavioral Science Institute in 2000. She lives in Redmond and serves as a Boy Scout Merit Badge Counselor and is on the board of the Hopelink community agency.



### LANTZ, PATRICIA T.

**Democrat.** Now in her third term representing the 26th District, Pat has a history of public service that includes founding the Peninsula Heritage Land Trust, working as a trustee on the Pierce County Library Board, and co-founding the City Club of Tacoma. She currently serves on the Children's Commission. An attorney, whose local private practice has emphasized land-use planning and immigration law, Pat is a graduate of the University of Puget Sound School of Law and Stanford University. She lives in Gig Harbor with her husband of 39 years, John. Her family includes three grown children and three grandchildren.



### LINVILLE, KELLI

**Democrat.** Representative from the 42nd District, which includes most of Whatcom County. Served in 1993-94; appointed 1995, re-elected in 1996, 1998 and 2000. Born in Bellingham and a fourth-generation Whatcom County resident, Kelli comes from a fishing family. She's active in many organizations, including Bellingham EDC, Whatcom Chamber of Commerce, AAUW, and Whatcom Conservation District. A former speech therapist, Kelli is a small business owner. She and her husband Will Roehl, live in Bellingham and have two sons, Christopher and Sean, a daughter-in-law, Lynn and a granddaughter, Hailey.

---

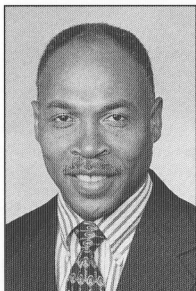
## Representatives

---



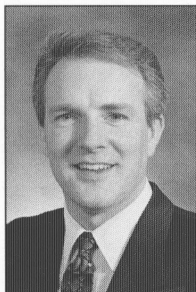
### LISK, BARBARA

**Republican.** Barbara is serving her sixth term as representative from the 15th District, which includes the lower Yakima Valley, Klickitat County, and parts of Benton and Skamania counties. She is a native of the Yakima Valley and graduated from Washington State University with a Bachelor of Science degree in biology. She and her husband, Ken, are apple growers on a family farm north of Zillah. Barbara served as chair of the House Commerce and Labor Committee in 1995. She was elected House Republican Caucus Chair in 1996 and Republican Majority Leader from 1997 to 2000.



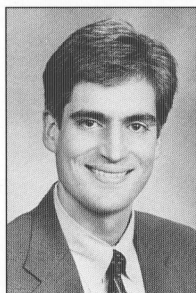
### LOVICK, JOHN

**Democrat.** Second-term Representative, 44th District. Prior to joining the Washington State Patrol, John spent four years with the U.S. Coast Guard. Representing portions of Bothell, Everett, Lynnwood, and Snohomish County, John's public service career includes 27 years as a state patrolman, five years as a Mill Creek city councilman, including one as Mayor Pro Tem. John is currently a member of the Snohomish County Developmental Disabilities Advisory Board, the State Supreme Court Gender and Justice Commission, and has an A.A. in Criminal Justice from Shoreline Community College. Along with his wife Karen, John has five children and one grandchild.



### MARINE, JOE

**Republican.** Rep. Marine represents the 21st District in south Snohomish County. He was appointed to the seat in January 2001. Marine was elected to the Mukilteo City Council in 1997 and served as council president in 2000. He is involved in transportation issues, having served on the city's Transportation Committee. Marine is active in community organizations, including the Mukilteo Chamber of Commerce, the Mukilteo Lighthouse Festival and the YMCA. He and his wife, Candy, are natives of the Puget Sound area. They have two children.



### MASTIN, DAVE

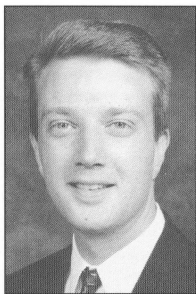
#### Co-Majority Leader

**Republican.** Representative from the 16th District, which comprises all of Walla Walla, Franklin, Garfield, and Columbia counties, and part of Asotin County. Dave graduated from Whitman College and Gonzaga Law School. He currently practices law in Walla Walla at Minnick-Hayner where he focuses on water law, land use, and endangered species law. Dave and his wife, Lorie, have two daughters and a son, Ashley Elizabeth (13), Kaitlin Marie (4), and Taylor Brockington (1).

---

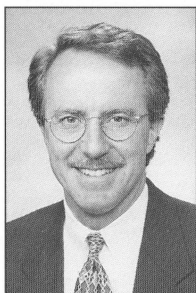
## Representatives

---



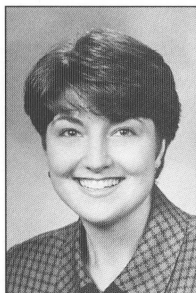
### **McDERMOTT, JOE**

**Democrat.** Representative from the 34th District including West Seattle, Burien, and Vashon Island. A budget analyst for Seattle Public Schools, Joe has considerable knowledge of the challenges facing public education, including class size and funding concerns. He is on the Board of Directors of the West Seattle Helpline, and is active in his church. Joe earned his B.A. from Gonzaga University and received his M.P.A. from the University of Washington. He is a life-long resident of West Seattle.



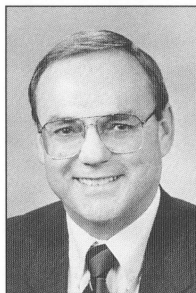
### **McINTIRE, JIM**

**Democrat.** Representative from the 46th District (north Seattle). A member of the University of Washington faculty for 13 years, Jim teaches economics and budgeting at the Daniel J. Evans School of Public Affairs. Jim also maintains a private consulting practice. He is a past Board Chair for Washington's Community Economic Revitalization Board and also for Common Ground, a nonprofit developer of low-income housing. Before joining the UW, Jim was a congressional economist, a research scientist at Battelle and fiscal policy advisor to former Governor Booth Gardner. Jim holds a Ph.D. in economics from the University of Washington, a master's degree in public policy from the University of Michigan, and a B.A. in urban and regional affairs from Macalester College.



### **McMORRIS, CATHY**

**Republican.** Representative from the 7th District comprising Pend Oreille, Stevens, Ferry, Lincoln and parts of Spokane and Okanogan counties. Holds a B.A. in pre-law from Pensacola Christian College. Member of the Western State Legislative Forestry Task Force. Serves on the Joint Legislative Audit and Review Committee. Active in a variety of organizations, including the Chamber of Commerce, Washington State Cattlemen's Association, Washington State Farm Bureau, and Washington Rural Health Association. Cathy has lived and worked on a family-owned fruit orchard in Kettle Falls for more than 12 years.



### **MIELKE, TOM**

**Republican.** A third-term Representative from the 18th District, including parts of Clark, Cowlitz and Lewis counties, Tom is a decorated Vietnam veteran and member of the Veterans of Foreign Wars and National Rifle Association. He owned a trucking company for 18 years and worked for Washington Water Power in Spokane. He was born and raised in Spokane, graduating from Shadle Park High School. Tom attended Columbia Basin College, Eastern Washington University and WSU. He and his wife, Gloria, live in Battle Ground and have four children and nine grandchildren. They attend Prince of Peace Church in Battle Ground.

---

## Representatives

---



### **MILOSCIA, MARK**

**Democrat.** Representing the 30th District, comprised of Federal Way, Algonia, and NE Tacoma. Mark is the Director of Operations for Stokes Action Group and a member of the Board of Directors of Federal Way Boys' and Girls' Club. A graduate of the Air Force Academy, he received his MBA from the University of North Dakota and his MA in Clinical Psychology from Chapman University. He and his wife Meschell live in Federal Way with their three children, Elizabeth, Scott and Brian.



### **MITCHELL, MARYANN**

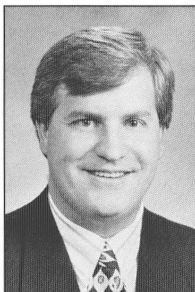
**Republican.** Maryann is serving her fifth term in the House representing the 30th District which includes Federal Way and parts of Tacoma, Auburn, Fife, Milton and Algonia. Chair of the group that incorporated Federal Way, she is also a leader in the House on transportation, local government and land-use issues. Maryann has served on numerous local, state and national committees, commissions and health boards. She lives in Federal Way with her husband, Sam, a retired high school science teacher.



### **MORELL, DAVE**

#### **Republican Assistant Whip**

**Republican.** Rep. Morell is serving his first term representing the 25th District, which includes Puyallup, South Hill, Sumner, Milton, and Pacific. He has built a successful commercial construction company over the past 19 years. Rep. Morell is currently a Pierce County Fire Commissioner, Park Board Member and serves on the South Hill Land Advisory Commission. His extensive community service also includes sponsorship of youth sports teams, volunteering for the local senior center and support for the area school district. He has also helped build local ball fields and aquatic facilities. Rep. Morell has been married for 23 years and has four children.



### **MORRIS, JEFF**

**Democrat.** Represents the 40th District, which is comprised of San Juan County and parts of Skagit and Whatcom counties. A fourth-generation native of Guemes Island in Skagit County, Jeff graduated from Anacortes High School and from Central Washington University, where he served as student body president and state chair of the Washington Student Lobby. Served as political director for U.S. Rep. Al Swift before forming his own public relations firm. He is currently a captain with the South Lake Whatcom volunteer fire department. He and his wife, Susan have three children: Miranda, Trevor and Madison.

---

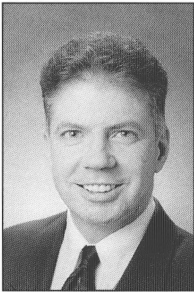
## Representatives

---



### MULLIKEN, JOYCE

**Republican.** A fourth-term representative from the 13th District, Joyce represents all of Kittitas and portions of Grant, Yakima and Benton counties. A lifetime resident of Ephrata, she is a graduate of Big Bend Community College and has attended CWU and Western Oregon State College. Active in her community, Joyce enjoys directing the youth choir at St. Rose Catholic Church. A former school board member, she is active in the Chamber of Commerce and other civic organizations. Married for 36 years, Joyce and her husband Mike have a grown son and two granddaughters. They have also been foster parents.



### MURRAY, EDWARD

**Democrat.** Represents Seattle's 43rd District (Capitol Hill, First Hill, Fremont, Wallingford, University District and Eastlake). Active in the community, particularly on civil rights and transportation issues. Ed is a member of the Capital Hill Chamber and St. Patrick's Parish, and serves on the board of the YMCA of Greater Seattle. He holds a B.A. in Sociology from the University of Portland and lives in Seattle with his partner, Michael.



### O'BRIEN, AL

**Democrat.** Representative serving his third term from the 1st District, which includes portions of North King County and South Snohomish County. A native of Washington state and son of a labor organizer and a nurse. Al served in Vietnam as a Marine Corps infantryman and is a retired 29-year veteran Seattle Police officer. He has also served as a Mountlake Terrace City Council member for five years and as an adjunct faculty member at City University for 10 years. Al has two grown sons, Christopher and Michael, and he resides in Mountlake Terrace.



### OGDEN, VAL

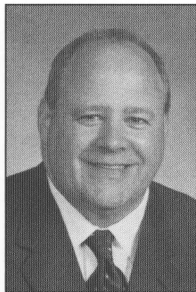
#### Democratic Speaker Pro Tempore

**Democrat.** Representative serving her sixth term from the 49th District which includes Vancouver and part of Clark County. A native Washingtonian, she is a graduate of Washington State University. Val has her own management consulting firm for nonprofit organizations. She is active locally with civic groups, including Council on the Homeless, Human Services Council, and Clark County Mental Health Board. Val is Democratic Speaker Pro Tempore and serves on Capital Budget, Transportation, Rules, Elections Select Committee and the Joint Legislative Audit and Review Committee. She and her husband, Dan, have three children and six grandchildren.

---

## Representatives

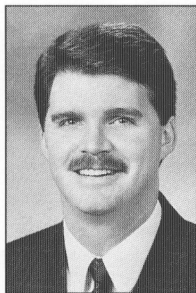
---



### PEARSON, KIRK

#### Republican Assistant Whip

**Republican.** Representing the 39th District, which includes rural Snohomish County and northeast King County, Kirk is serving his first term in the Legislature. A fourth-generation Snohomish County resident and Monroe High School graduate, Kirk attended Wenatchee Valley College and Central Washington University. Former special assistant to U.S. Congressman Jack Metcalf. Kirk is active in the community, having served on the Monroe Planning Commission, Monroe Lions Club, Sultan Sportsman Club, Snohomish County Community Services Advisory Council, and local youth programs. Kirk and his wife, Rachel, have five sons, Kirk, Jr., Carl, Shane, Sean and Mark.



### PENNINGTON, JOHN E.

#### Republican Speaker Pro Tempore

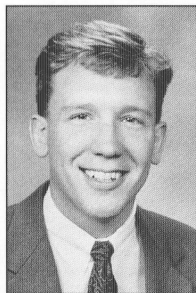
**Republican.** John is serving his fourth term as representative from the 18th District, which includes north Clark, east Cowlitz and south Lewis counties. Elected for a third term as Speaker Pro Tempore of the House, John serves on the House Legislative Ethics Board and is chair of the National Conference of State Legislatures Advisory Council on Energy. He is also chair of the five-county Lower Columbia Fish Recovery Board and serves on the board for the Columbia Theatre for Performing Arts. He and his wife, Valerie Ann, are former owners of Timber Town Coffee Company and reside in the Carrolls area of Cowlitz County. John is an avid outdoorsman and enjoys tree farming and musical composition.



### PFLUG, CHERYL

#### Republican Caucus Vice Chair

**Republican.** Representative from the 5th District which includes the eastern portion of Renton, Maple Valley, Issaquah, the Sammamish Plateau, Preston, Fall City, Snoqualmie, North Bend, and Snoqualmie Pass. A critical care nurse, Cheryl earned a Bachelor of Science in Nursing from the University of Washington. Married 20 years, Cheryl and her husband, Bryan, have four children and are active in a variety of community, church, school and youth programs.



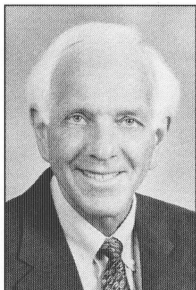
### POULSEN, ERIK

**Democrat.** Fourth-term representative from the 34th District, which includes West Seattle, Burien and Vashon Island. Erik has served as Democratic Chairman of the Technology, Telecommunications, and Energy Committee, and has held positions on the Appropriations, Rules, Education, Agriculture and Ecology Committees, as well as on the Joint Select Committee on Education Restructuring. Works as a contract writer during the interim. Former congressional and Governor's aide. Earned degrees in Journalism and Political Science from the University of Wisconsin-Madison. Active in many civic organizations, Erik lives in West Seattle with sons Soren and Dane.

---

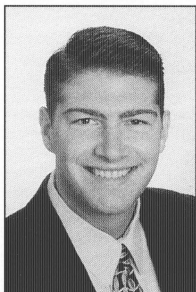
## Representatives

---



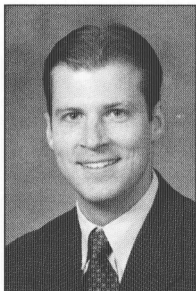
### **QUALL, DAVE**

**Democrat.** Representing the 40th District, comprising a majority of Skagit County, all of San Juan County, and the southern portion of Whatcom County. Thirty-eight years in education as a history teacher, counselor, and men's basketball coach at Skagit Valley College. Graduate of Seattle Pacific University with a B.A. and M.A in education. Married to Allene for 42 years, with two daughters and six grandchildren.



### **REARDON, AARON**

**Democrat.** Serving his second term representing the 38th Legislative District – the heart of Snohomish County. Graduates of Central Washington University, Aaron and his wife Kate, a local journalist, live in Everett. In addition to his standing committees, Aaron is Vice-Chair of the NCSL Commerce and Communications Committee, and serves on the Joint Select Committee on Military and Veterans' Affairs, Washington State Council on Energy and Utilities, Pacific Northwest Regional Economic Council, and the Council on River Governance. Aaron is an active community leader, involved in the Downtown Everett Business Association, Marysville Merchants Association, Snohomish County Neutral Zone, and the YMCA.



### **ROACH, DAN**

**Republican.** First-term representative from the 31st District, including south King County and northeast Pierce County. A graduate of Brigham Young University with a degree in political science, Dan is a broker with Rainier Mortgage & Investments. Active in his community, he is a member of the Auburn Chamber of Commerce and the Lake Tapps Task Force, and is chairman of the Bonney Lake Blue Ribbon Commission on Economic Development. An Eagle Scout, Dan is a scoutmaster and also remains very active in his church. He and his wife, Melanie, reside in Bonney Lake.



### **ROCKEFELLER, PHIL**

**Democrat.** Representing the 23rd District, Kitsap County including East Bremerton, Silverdale, Bainbridge Island, Kingston, Poulsbo, and Hansville. Serving since 1999, Phil is a member of the Joint Task Force on Ferries and the Joint Legislative Audit and Review Committee. He graduated from Yale University and received his J.D. from Harvard Law School. Phil retired in 1994 from the US Department of Education, and served as Education Aide to Gov. John Spellman and as Legislative Assistant to the US House of Representatives. He and his wife, Anita, have lived on Bainbridge Island since 1971, and have three daughters, Rebecca, Melissa, and Erika.

---

## Representatives

---



### **ROMERO, SANDRA**

**Democrat.** Representative from the 22nd District, comprising parts of Thurston County, including the cities and environs of Olympia, Lacey and most of Tumwater. Serving her fourth term in the House. Sandra has served on the Board of Safe Place Women's Shelter and Behavioral Health Resources and also has served as an Olympia City Council member, a former school board member and a member of the Intercity Transit Authority. Sandra lives in Olympia with her husband, Fred, and their daughter Zoe and son Noel.



### **RUDERMAN, LAURA**

**Democrat.** Represents the 45th District, which includes Redmond, Kirkland, Duvall and Carnation. Laura is a former Microsoft program manager who has years of experience fighting for working families on a local and national level. Laura is the president of the Board of Directors of a non-profit micro-lending organization that helps low-income women start their own businesses and become self-sufficient. She is a 1992 graduate of Wesleyan University.



### **SANTOS, SHARON TOMIKO**

#### **Democratic Assistant Whip**

**Democrat.** 37th District. A community activist for more than 20 years, Sharon Tomiko has worked for civil rights, women's rights, economic and environmental justice, affordable housing, and quality public education. She is a member of the Education, Financial Institutions and Insurance, and Finance committees and serves as Assistant Whip in the Democratic Caucus. A graduate of Evergreen State College and of Northeastern University, Sharon Tomiko has worked in the banking industry, on staff to local public elected officials, and in senior management positions for several nonprofit organizations. She resides with her husband, Bob, in the Rainier Beach area.



### **SCHINDLER, LYNN**

#### **Assistant Republican Floor Leader**

**Republican.** Lynn is serving her second full term in the House, having been appointed to the seat in June 1998. She represents the 4th District, which comprises Spokane Valley and areas north and east of Spokane. A graduate of Marquette University, Lynn and her husband Jim manage commercial and investment properties. Spokane residents since 1982, they have been married 33 years, have 10 children and remain active in numerous civic organizations and business groups. An expert in the House on education and economic issues, Lynn has been elected to serve as Assistant Republican Floor Leader in the House leadership.



---

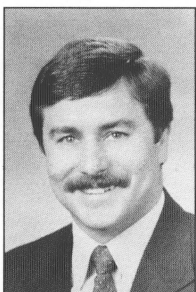
## Representatives

---



### **SCHMIDT, DAVE**

**Republican.** Represents the 44th District, including Bothell, Mill Creek and South Snohomish County. Elected to his fourth term, Dave has served on the Transportation, State Government, Education, Appropriations and Trade and Economic Development committees. He has served in the Washington Army National Guard for 18 years. He is member of the Northshore Chamber of Commerce and an active volunteer at Eastside Foursquare Church in Bothell. Dave earned his B.A. in Religion and Philosophy from George Fox University in Newberg, OR, and an M.A. in Theology from Multnomah Biblical Seminary in Portland, OR. Married to Debi, a hospice R.N., for 22 years, they have two teenage children, Charissa and Matt.



### **SCHOESLER, MARK**

#### **Republican Whip**

**Republican.** Representative from the 9th District serving his fifth term. A graduate of Spokane Community College, Mark serves on the advisory committee of the WSU Animal Sciences Department. He is a former president of Washington Friends of Farms and Forests; life member and past director of the Washington Association of Wheat Growers; a member of the Washington Vocational Agriculture Advisory Committee; NFIB; Washington State Farm Bureau; Washington Cattlemen's Association; and Zion Congregational Church. Mark and his wife, Ginger, have two children — Veronica and Cody. The Schoeslers make their home on a century-old family farm raising cattle, wheat, barley and canola.



### **SCHUAL-BERKE, SHAY**

**Democrat.** Serving her second term representing the 33rd District in South King County. Trained as a cardiologist, Shay retired to spend more time with her family and serve her community. Former member of the Highline School Board, WA State School Directors Association, and King County Oversight Panel on Teen Health Clinics. Shay serves on the Board of Trustees for Wesley Homes and Gardens retirement facility and the National Council of State Legislature's Forum for Health Policy. During her first term she was co-vice chair of the Healthcare Committee. She and husband Dan live in Normandy Park with their sons, Alex and Jake.



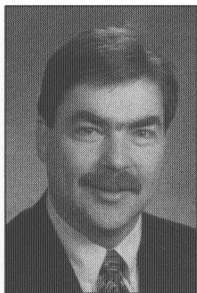
### **SEHLIN, BARRY**

**Republican.** Representative from the 10th District, which includes all of Island County, northwest Snohomish County, and western Skagit County. Barry is a retired U.S. Navy captain and former base commander of Naval Air Station Whidbey Island. He formerly served in the House of Representatives from 1992 to 1998. He received his master's degree from Western Washington University in 1992 and has been named Distinguished Alumnus and a member of the Hall of Fame at Skagit Valley College. Barry and his wife, Susan, live near Oak Harbor. They have two children, Jennifer and Martin.

---

## Representatives

---



### **SIMPSON, GEOFF**

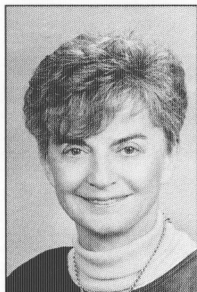
#### **Assistant Democratic Whip**

**Democrat.** Representative from the 47th District including Kent, Covington, Renton and Maple Valley. Geoff is a two-term Covington City Council member and has served as Mayor Pro-tem. He is a fire fighter with the Kent Fire Department and has also been a small business owner. An active community leader, Geoff serves on several boards and is well-known locally for his efforts to improve pedestrian safety and walking-routes for school children. Geoff is a U.S. Navy Pacific Fleet veteran. A life-long Washington resident, Geoff and his wife, Kathy, live in Covington. They have three young children.



### **SKINNER, MARY**

**Republican.** Life-long Washington resident representing the 14th District. As a junior-high teacher and 22-year volunteer in Thurston, Walla Walla and Yakima counties, Mary has acquired both local and statewide perspectives, especially in the area of health and education. Mary is a past board member of Yakima Valley Community College, Washington State Board of Education, and Heritage College. She is currently a board member of the Washington State Arts Commission, and is serving her fourth term in the Legislature. Mary attended Yakima Valley College, graduating from Central Washington University. Mary and her husband, Hal, live in Yakima.



### **SOMMERS, HELEN**

**Democrat.** Representative from the 36th District in Seattle. Earned MA in Economics, University of Washington. Helen has chaired Appropriations, Revenue and Higher Education Committees, and served as Caucus Chairwoman. Named the No. 1 legislator in 1994 Seattle Times survey and the "top legislator" in a 2000 survey by the publication Law and Politics. Formerly employed by King County, Helen has taught economics at community college, and lived and worked in Caracas, Venezuela. Member of the State Investment Board, Burke Museum Development Council, Friends of Stonerose Fossils and the Advisory Committee to Technology Alliance's "Smart Tools Academy."



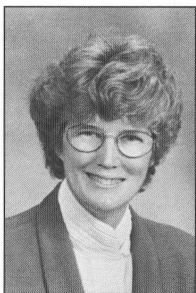
### **SUMP, BOB**

**Republican.** Representative of the 7th District comprised of Spokane, Okanogan, Ferry, Stevens, Lincoln, and Pend Oreille counties. Bob was a member of the 2000 Fairs Funding Task Force, working to provide a sustainable source of funding for community fairs. He resides in Republic with his wife, Brenda. They have been married 40 years and have three children and four grandchildren. Bob has been employed in the mining industry for 24 years.

---

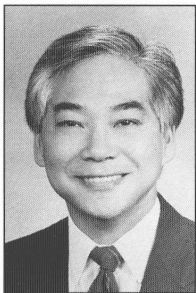
## Representatives

---



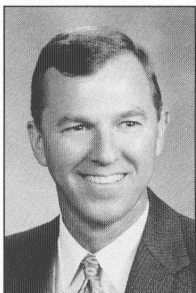
### **TALCOTT, GIGI**

**Republican.** Gigi represents the families, individuals and job providers of Fircrest, University Place, Lakewood, Steilacoom, Tillicum, and West Tacoma. A career educator, she has taught both at the elementary school level and at Clover Park Technical College, and has since established herself as a leader in the House on education issues. Gigi holds a bachelor's degree in biology and a master's degree in education. She works closely with Habitat for Humanity, the Red Cross and her church. She and her husband Ron, a Boeing pilot and retired military, have two sons and four grandchildren.



### **TOKUDA, KIP**

**Democrat.** Kip is serving his fourth term representing the 37th District in Central/Southeast Seattle. His legislative priorities include children's issue and social justice. Prior to his election, he served as the executive director of the Washington Council for the Prevention of Child Abuse and Neglect. Kip received a master's degree from the University of Washington. His civic activities include service as president of the Seattle Japanese American Citizen's League and leader of the International District Health Clinic. Kip lives in Seattle with his wife and daughter.



### **VAN LUVEN, STEVE**

**Republican.** Representative from the 48th District, which includes Bellevue, Kirkland, and Redmond. Appointed in 1983. Born in Bellingham, raised in the Yakima Valley and Olympia. B.A. in Communications from Brigham Young University and master's degree from American Graduate School of International Management (Thunderbird). Local business owner for 25 years. Previously worked in New York City as an advertising executive. Work experience in Guatemala, El Salvador, and Mexico. Served as captain, U.S. Army Finance Corps. Served six years as chairman of the Trade, Economic Development, and Housing Committee.



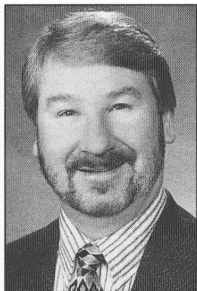
### **VELORIA, VELMA R.**

**Democrat.** Representative from the 11th District, comprising parts of South Seattle along the I-5 corridor, West Seattle, Tukwilla, SeaTac, and Renton. Serving her fifth term. A long-time union organizer and human rights activist. She is an action and result-oriented legislator working on a range of issues including grandparents raising grandchildren, promoting a healthy environment, affordable housing, and quality education for all students. Velma has worked on trade missions providing contacts for small businesses to the international market place. Graduate of San Francisco State College with a B.S. in Medical Technology.

---

## Representatives

---



### **WOOD, ALEX**

**Democrat.** Representing the 3rd District, Spokane, Spokane County. Attended Washington State University. A broadcast journalist talk show host in radio and television from 1979 to 1996. Twice the recipient of the Columbia School of Journalism Armstrong Award. Serving his third term.



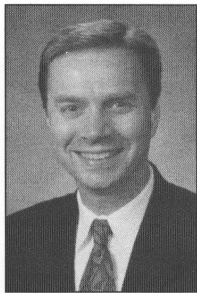
### **WOODS, BEVERLY**

**Republican.** Second-term representative from the 23rd District which covers Kitsap County, including Bainbridge Island, Silverdale, Poulsbo, Kingston, Hansville and parts of Bremerton. Beverly and her husband, Jim, live in Poulsbo and own a construction firm. They have four grown children and seven grandchildren. She has been the executive director of the Bremerton-area Chamber of Commerce, a senior public affairs officer with the U.S. Chamber of Commerce and the public affairs director for the Association of Washington Business. Beverly also serves on the Washington State Legislature's Joint Task Force on Ferries.

---

## House Administration

---



**MARTIN, TIMOTHY A.**

**Co-Chief Clerk**

First elected Chief Clerk in 1995. Graduate of University of Puget Sound School of Law and Central Washington University. Tim and his wife, Kim, have two sons, Max and Gust.



**ZEHNDER, CYNTHIA**

**Co-Chief Clerk**

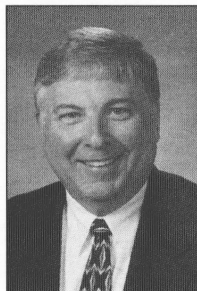
Elected Co-Chief Clerk at the end of the 1999 Special Session. Served as Co-Deputy Chief Clerk during the 1999 Regular Session. Appointed Deputy Commissioner for the Employment Security Department from 1997 through 1998. Before coming to state government, spent many years as an official for the Teamsters Union, holding a number of positions including Secretary-Treasurer for Teamsters Local 741 and Coordinator for the Joint Council of Teamsters No. 28. Graduate of the University of Washington with a BA in Anthropology and a master's degree in Educational Psychology. She has one son, Matthew.



**HAYWARD, SHARON**

**Deputy Chief Clerk**

Has worked in the House since 1983. Has served as the deputy staff director and the staff director of the House Republican Caucus, and Deputy Chief Clerk of the House since 1995. Sharon and her husband, Allen, have three sons, Jason, Jon and Matt, and one granddaughter, Rylee.



**WEGELEBEN, WILLIAM H.**

**Deputy Chief Clerk**

Appointed Deputy Chief Clerk June 1999. Previously worked for the House of Representatives from 1983-87. Employed by Governor Gardner from 1987-92, and Governor Lowry from 1993-97. Served as Special Assistant to the Secretary of DSHS 1997-99. Raised in Ellensburg and Yakima, attended Yakima Valley College and University of Washington before graduating from Central Washington University. Also served for 3 ½ years as a VISTA Volunteer, and 8 years on the congressional staff of Congressman Mike McCormack.

---

# Americans with Disabilities Act

---

---

## Assistance For Persons With Disabilities

---

The Washington State Legislature is committed to making legislative activities and facilities accessible to all people. To meet this goal, the Legislature has taken steps to ensure that individuals with disabilities have full access to legislative activities, programs, and services. The Legislature would like to hear from you if you have comments or concerns relating to services we provide to persons with disabilities. Please feel free to contact the appropriate ADA coordinator.

---

## Barrier-Free Access

---

All legislative buildings have designated disabled parking and entrance ramps to provide easy access. Each building on the campus has at least one door that is accessible by wheelchair. Legislative hearing rooms in the Cherberg and O'Brien buildings are accessible to persons using wheelchairs. Each hearing room has an accessible entrance and a designated wheelchair seating area. If additional assistance is required, please contact the appropriate Americans with Disabilities Act (ADA) coordinator listed below.

---

## Auxiliary Aids For Communication

---

### Telecommunications Device for the Deaf (TTY):

The Legislature has TTY service. This service allows persons who are deaf or hard-of-hearing to communicate with legislators and staff about matters before the Legislature, scheduling, bill information, etc. For information or to leave a message, call the following number:  
Legislative TTY ..... 1-800-635-9993

### State Telephone Relay Service:

As an alternative to the Legislature's TTY number, any legislative number can be reached directly by dialing:  
State Telephone Relay Service (voice) ..... 1-800-833-6384  
or State Telephone Relay Service (TTY)..... 1-800-833-6388

### Assistive Listening Devices in Hearing Rooms:

Legislative hearing rooms are equipped with assistive listening systems. These systems allow hard-of-hearing persons to amplify hearing proceedings through the use of special headphones. For meetings in the Cherberg and O'Brien buildings, headphones can be checked out at the security offices on the first floor of each building.

### Interpreters and Readers:

The Legislature will provide sign language interpreters and readers when appropriate and with advance notice. If you need a sign language interpreter or reader, please contact the appropriate staff person or ADA coordinator.

### Documents in Alternative Formats:

Legislative documents can be made available in alternate formats (large print, braille, and audio tape) upon request. If you need a document in an alternate format, contact the appropriate staff person or ADA coordinator. Please give as much advance notice as possible, as it may take significant turnaround time to meet certain requests.

---

## ADA Coordinators

---

The Senate and House ADA coordinators provide assistance if questions or concerns arise and coordinate the implementation of the ADA.

Sergeant at Arms Office ..... (360) 786-7560

Ken Conte, House ADA Coordinator

Office of Program Research..... (360) 786-7101

---

# How A Bill Becomes A Law

---

1. A bill may be introduced in either the Senate or House of Representatives, but the procedure by which a bill becomes a law is much the same, wherever the bill originates.

The bill is introduced in the Senate or the House by a member, or members, of that body. After the bill is filed with the Secretary of the Senate or Chief Clerk of the House, it is given a number and, it is read the first time by title only in open session and referred to a standing committee.

2. The committee studies the bill and often holds public hearings on it. The committee will then meet to consider the information it has gathered. It may approve the bill with or without amendments, draft a new bill on the same subject incorporating the desired changes, or take no action.
3. The committee is now ready to report back to the Senate or the House. If the majority is in favor of the bill as introduced or with certain amendments, the chair recommends the bill for passage. The committee report is read in open session of the Senate or the House, and the bill is then referred to the Rules Committee.
4. After the bill has been recommended for passage by the standing committee to which it was originally referred, the Rules Committee can either place it on the second reading calendar for debate before the entire body, or take no action.
5. When the bill appears on the calendar for second reading, it is subject to amendment. It is then returned to the Rules Committee where it must receive a favorable vote before being placed on the third reading calendar for final passage. This referral to Rules is often bypassed by vote of the Senate or the House and the bill placed on final passage immediately following its second reading. Depending upon the degree of controversy, debate may last a few minutes to several hours or even several days.
6. After passing in the Senate or the House, the bill will go through an almost identical procedure in the other body.

If the bill is passed by the other body, but is amended, the originating body must concur in the amendments. If the change in the bill is not accepted, it may be returned for reconsideration of the amendments. If the amendments are not rescinded, a conference committee may be requested on the differences.
7. If the conference committee cannot agree, a conference committee may be appointed with power to rewrite the amendment or even write an entirely new bill. When the conferees reach agreement, they report to their respective houses. Their report is either accepted or rejected without any changes.
8. If the report is accepted by both houses, the bill is signed by the President of the Senate and the Speaker of the House in open sessions of each body, and then is sent for the Governor's signature.
9. Within five days, if the Legislature is still in session, or 20 days after its adjournment, the Governor may sign the bill or veto all or any section of it. The Legislature can override the veto by a two-thirds vote of both houses. If the Governor fails to act on the bill, it becomes law without a signature.

---

## Visitors Tour Information

---

The State Capitol Tour Program was initiated to benefit both the legislator and the constituent.

Busy legislators frequently find it difficult to be on hand to greet guests arriving from their home district. The Tour Office will assign a staff member to meet the visitors and welcome them in the name of the district legislator. Arrangements will be made for a time and place for the legislator to speak with the group or the individual guest. Seating space will be reserved in the House and Senate galleries.

Visitors may be escorted to places of interest on the Capitol Campus: State Library, Temple of Justice, and State Museum. Appointments can be made to visit the offices of the Governor, Lieutenant Governor, Treasurer, Auditor, and Secretary of State.

Requests from constituents often come directly to the Tour Guide Office which then informs the legislators from the district. Many times the request comes first to the legislator who will then call the office with the name of the group and a contact phone number.

All state buildings are open Monday - Friday, 8:00 a.m. - 5:00 p.m.

**Campus activities and information** . . . . . (360) 664-2700

**Legislative Building tours** . . . . . (360) 586-TOUR  
Hourly, from 10:00 a.m. to 3:00 p.m., seven days a week.

**Governor's Mansion** . . . . . (360) 586-TOUR  
by appointment Wednesday afternoons, 1:00 to 2:45 p.m.

**Temple of Justice**  
Monday - Friday, 8:00 a.m. to 5:00 p.m.

**Conservatory**  
Daily, 8:00 a.m. to 4:00 p.m., Memorial Day through Labor Day  
Monday - Friday, 8:00 a.m. to 4:30 p.m., September through May

**State Capitol Museum, 211 W. 21st, Olympia** . . . . . (360) 753-2580

**Department of Transportation Art Exhibit**  
Monday - Friday, 8:00 a.m. to 4:00 p.m.

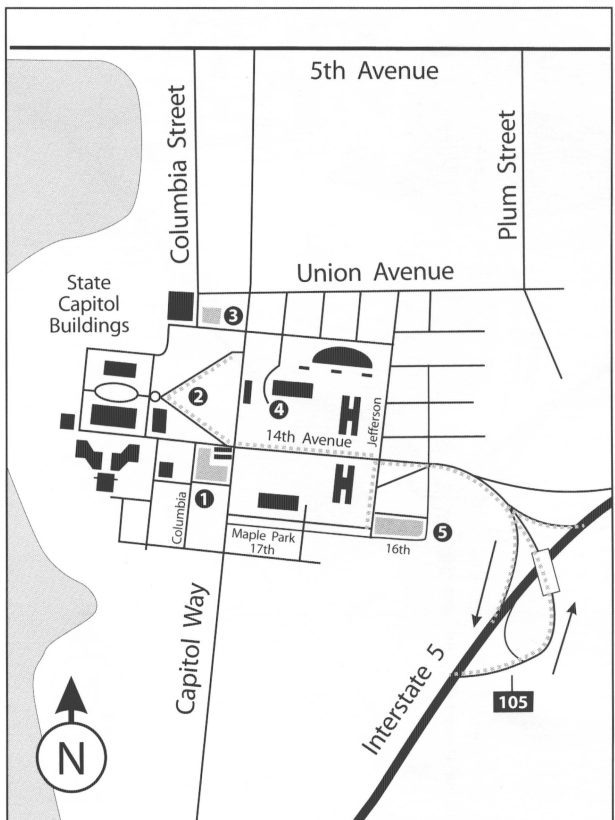
**Old Capitol Building tours by appointment** . . . . . (360) 753-6740  
Legion Way and Franklin Street, Olympia  
Monday - Friday, 8:00 a.m. to noon, 1:00 to 5:00 p.m.



# State Capitol Parking Information

There are six parking locations available to visitors at the Capitol:

1. **Visitor Information Center Parking.** Located at the Visitor Information Center at 14th and Capitol Way. There is a \$.50 per hour charge. The phone number is (360) 586-3460.
2. **North and South Diagonal Parking.** Located along the North and South Diagonal roads on the Capitol Campus. There is a \$.50 per hour charge. South Diagonal parking is not available for public parking during legislative session.
3. **General Administration Parking Garage** (upper level) off of 11th Avenue. There is a \$.50 per hour charge.
4. **Natural Resources Building.** Visitor entry is from Washington and 11th. \$.50 per hour charge.
5. The **Satellite Visitor Parking Lot** at Jefferson Street and **Deschutes Parkway.** Intercity Transit's Route 42 serves the Satellite Visitor Parking Lot, Capitol Campus, and Deschutes Parkway Monday through Friday. Service to the Satellite Parking Lot is every 30 minutes. Service on Deschutes Parkway is every 15 minutes during morning and evening peak times and every 30 minutes during the day. The fare is \$.60 per ride or \$1.25 for a daily pass. For trip and schedule information, call Intercity Transit Customer Service at (360) 786-1881, or visit their website at [www.intercitytransit.com](http://www.intercitytransit.com). (Parking is free on Deschutes Parkway along Capitol Lake for legislative staff only and Satellite Visitor Parking Lot overflow.)



# State Capitol Parking Information

**Deschutes Parkway from I-5 Southbound:** Take exit 103 and proceed on 2nd Avenue to the Tumwater Fire Station; turn left onto the Custer Way overpass; turn right on Boston, proceed downhill to Deschutes Parkway; turn right (north) onto the Parkway and proceed to the designated parking area along Capitol Lake (see map below).

**Deschutes Parkway from I-5 Northbound:** Take exit 103 and proceed north on Deschutes Parkway through the stop sign to the designated parking area along Capitol Lake (see map below). For more information, call the Visitor Information Center at (360) 586-3460.

**Persons with Disabilities:** Those needing auxiliary aids or services for purposes of attending hearings or participating in legislative activities should call the House at 786-7101 or the Senate at 786-7560 for further information. TTY 1-800-635-9993.

**Tour and School Buses:** Buses may unload and reload passengers on the Capitol Campus at the Winged Victory statue (at the junction of the North and South Diagonals). Buses should then park in the bus parking area at the Satellite Parking Lot.

