



RECTORY

~~STATE LIBRARY~~

JAN 13 1965

OLYMPIA, WASH.

Washington State Legislature

**39th.
Session
1965**

Published by
A. Ludlow Kramer,
Secretary Of State

~~~~~TABLE OF CONTENTS~~~~~

|                                      | PAGE |
|--------------------------------------|------|
| Preface. . . . .                     | 1    |
| Functions of the Legislature . . . . | 2    |
| Senate Roster. . . . .               | 4    |
| Senate Biographies . . . . .         | 5    |
| House of Representatives Roster. . . | 20   |
| House of Representatives Biographies | 22   |
| Legislative District Map of Wash.. . | 26   |
| The Press. . . . .                   | 51   |

~~~~~

~ PREFACE ~

This "1965 Pictorial Directory of the Washington State Legislature" containing pictures and biographical material about the members is designed to provide information of interest to the general public. I trust it will be useful to the citizens of the State in their contacts with the members of both Houses.

Many states publish an official "Blue Book" containing information about their elected and appointed state officials. Since lack of funds make this prohibitive in Washington, we offer this smaller volume.

In presenting this Directory, I hope members of the 39th Legislature will find this a useful reference work as well as a memento of their service in the 1965 Legislature.

~ THE STATE LEGISLATURE ~

Is made up of two houses consisting of 49 Senators and 99 Representatives, meeting biennially in January of each odd year for a 60-day session. The Governor may proclaim or call a special session at other times but must state the purposes for which a special session is called.

The Legislature is provided for by the State Constitution and without its action there would be no elections, no registration, no public schools and no municipalities.

It regulates the citizen's civil rights and duties, secures him in the tenure of his property and makes most of the rules that govern his daily life.

The Legislature is charged with the making, modification or repealing of the laws and with the raising and appropriation of the revenues. It also establishes duties that state administrative authorities shall perform.

In presenting this Directory, I wish to express my sincere thanks to the following: Hon. Robert M. Schaefer, Speaker of the House, Hon. William A. Gissberg, President Pro-Tem of the Senate, S. R. "Si" Holcomb Chief Clerk of the House, Ward Bowden Secretary of the Senate and the members of the 1965 Legislature for their cooperation in providing information and pictures used in this book.



A. Ludlow Kramer
SECRETARY OF STATE

6 DECEMBER

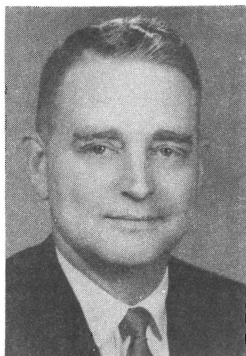
**THE SENATE
OF THE STATE
OF
WASHINGTON**

ROSTER OF MEMBERS**State Senate**

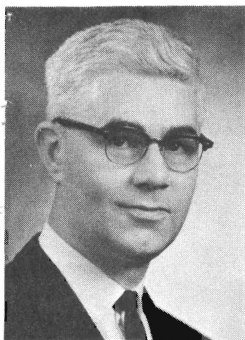
NAME	ADDRESS	DIST. NO.	POLITICAL PARTY
ATWOOD, R. Frank	317 Park Ridge, Bellingham	42	R
BAILEY, Robert C.	620 West First St., South Bend	19	D
CHARETTE, Robert L.	415 W. 4th St., Aberdeen	21	D
CHYTIL, Joe	1274 - 5th St., Chehalis	20	R
CONNOR, Frank	408 - 20th S., Seattle	33	D
COONEY, John L.	N. 3403 Adams, Spokane	5	D
COWEN, David C.	S. 223 Coeur d'Alene, Spokane	7	D
DONOHUE, Dewey C.	506 E. Richmond, Dayton	10	D
DORE, Fred H.	3721 E. Marion, Seattle	37	D
DURKAN, Martin J.	4049 W. Lake Sammamish S., Issaquah	47	D
ENGLAND, Jack	4703 - 11th N. E., Seattle	32	R
FOLEY, Frank W.	3924 Wauna Vista Drive, Vancouver	49	D
FREISE, Herbert H.	932 Frazier Drive, Walla Walla	11	R
GALLAGHER, Michael J.	8045 Burke N., Seattle	45	D
GISSBERG, William A.	Rt. 1, Box 41, Lake Stevens	39	D
GREIVE, R. R. (Bob)	5116 S. W. Hudson, Seattle	34	D
GUESS, Sam C.	W. 408 - 33rd Ave., Spokane	6	R
HALLAUER, Wilbur G.	P. O. Box 70, Oroville	1	D
HANNA, H. B. (Jerry)	1130 Springwater Ave., Wenatchee	12	D
HENRY, Al	White Salmon	17	D
HERR, Gordon	10617 - 21st S.W., Seattle	31	D
HERRMANN, Karl V.	9417 E. Grace, Spokane	4	D
KEEFE, James (Jimmy)	412 W. Glass Ave., Spokane	3	D
KNOBLAUCH, Reuben A.	Rt 1, Box 641, Sumner	25	D
KUPKA, George	1916 South "M" St., Tacoma	27	D
LENNART, Ernest W.	Rt. 1, Everson	41	R
LEWIS, Harry B.	Rt. 4, Box 532, Olympia	22	R
MARDESICH, August P.	4712 Mermont Drive, Everett	38	D
MCCORMACK, Mike	2010 Everest, Richland	16	D
MCCUTCHEON, John T.	P. O. Box 387, Steilacoom	29	D
McMILLAN, David E.	Route 3, Colville	2	D
MORGAN, Frances Haddon	948 Lower Oyster Bay Rd., Bremerton	23	D
MORIARTY, Charles P., Jr.	100 Highland Drive, Seattle	36	R
NEILL, Marshall A.	414 Dexter St., Pullman	9	R
PETERSON, Lowell	Box 188, Concrete	40	D
PETERSON, Ted G.	2355 Blue Ridge Drive, Seattle	44	R
PETRICH, John A.	815 No. "G" St., Tacoma	26	D
RASMUSSEN, A. L. "Slim"	4031 Pacific Ave., Tacoma	28	D
RAUGUST, W. C.	Odessa	8	R
REDMON, Fred	3901 Richey Road, Yakima	14	R
RILEY, Edward F.	616 - 4th W., Seattle	35	D
RYDER, John N.	6811 - 55th N. E., Seattle	46	R
SANDISON, Gordon	2501 So. Cherry St., Port Angeles	24	D
STENDER, John H.	27420 Military Road, Auburn	30	R
TALLEY, Donald L.	1817 Bloyd St., Kelso	18	D
THOMPSON, Albert C., Jr.	2300 - 108th S. E., Bellevue	48	R
WASHINGTON, Nat	42 "C" St. N. W., Ephrata	13	D
WILLIAMS, Walter B.	3871 - 45th N. E., Seattle	43	R
WOODALL, Perry B.	Route 1, Toppenish	15	R

Senators

ATWOOD, R. Frank (Republican) Senator from the 42nd District of Whatcom County will be serving his second term. Born in 1926 in Massachusetts. Graduated with a B. A. in Political Science and University of Washington Law School. He is an attorney. Served in the Army in World War II, Captain Army Reserves. Member Lions, Elks, Chamber of Commerce, Reserve Officers Association, member State Bar and American Bar Association. He and his wife Marie have two children.



BAILEY, Robert C. "Bob" (Democrat) Senator from the 19th District of Pacific and part of Grays Harbor County. Served in the House three terms and will be serving his third term in the Senate. Born in Raymond in 1918. Now working on printing staff of the Aberdeen Daily World. In Navy during World War II. Member Eagles, VFW, American Legion, Masons and Boy Scout Council. He and his wife Lee have a Son.



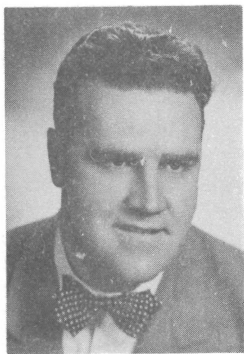
CHARETTE, Robert L. (Democrat) Senator from the 21st District of Grays Harbor County will be serving his second term. Born 1923 in Aberdeen. Graduate of Grays Harbor Junior College and the University of Washington Law School. Partner in the law firm of Schumacher & Charette. Served in the Army Infantry receiving the Purple Heart Award. Member Phi Kappa Psi, Phi Delta Phi, Grays Harbor and American Bar Associations, Eagles, Elks, VFW, the American Legion and Military Order Purple Heart. He and his wife Betty have three children.



CHYTIL, Joe (Republican) Senator from the 20th District of Lewis County. Served in the House 1953-55-57-59. Will be serving his third session in the Senate. Born in Aberdeen in 1909. A graduate of high school and business college. Has been in radio broadcasting business since 1937, and is Chairman of the Board of Directors, Washington State Association of Broadcasters. He is a member of Rotary, Elks and Eagles. He and his wife Jane have two children.



Senators



CONNOR, Frank (Democrat) Senator from the 33rd District of King County served three terms in the House and will be serving his third term in the Senate. Born in Seattle in 1916. Graduate of O'Dea High School and is now a Deputy Assessor of King County. Member Eagles and Knights of Columbus. He is married and his wife's name is Arlene.

COONEY, John L. (Democrat) Senator from the 5th District of Spokane County. Served two terms in the House and will be serving his third term in the Senate. Born in Condon, Oregon in 1915. Graduate of Gonzaga Law School and is a practicing lawyer. Member Elks, Grange and Knights of Columbus. He and his wife Marguerite have four children.



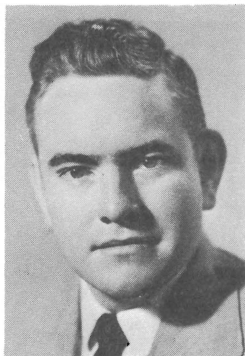
COWEN, Dr. David C. (Democrat) Senator from the 7th District of Spokane County. Senior member of the Washington State Legislature. He served four terms in the House and will be serving sixth term in the Senate. Born in Portland, Oregon. Graduate of the University of Oregon and is a dentist. Member Masons, Elks, Shrine and Moose. Unmarried.

DONOHUE, Dewey C. (Democrat) Senator from the 10th District of Columbia, Asotin and Garfield Counties. Served six terms in the House and will be serving second term in the Senate. Born in Columbia County Washington in 1897. Attended high school and business college. He is a farmer. Member Elks, Eagles and Masons. He and his wife Marguerite have five children.



Senators

DORE, Fred H. (Democrat) Senator from the 37th District of King County. Served seven terms in the House and will be serving his third term in the Senate. Born in 1925 in Seattle. Attended Seattle University and graduated from Georgetown Foreign Service School and Georgetown Law School and is a practicing lawyer. Member of the Eagles and Elks. He and his wife Mary have four children.



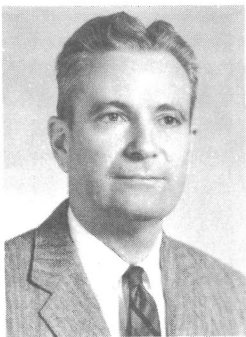
DURKAN, Martin (Democrat) Senator from the 47th District of King County. Served one term in the House and will be serving his second term in the Senate. Born in Great Falls, Montana in 1924. Graduate of the University of Washington Law School and is an attorney. Veteran of World War II. He and his wife Lorraine have five children.



ENGLAND, Jack (Republican) Senator from the 32nd District of King County. Served one term in the House and this will be his second session in the Senate. Born in 1927 in Mt. Vernon. Has a B.A. and LL.B. degrees from the University of Washington is an attorney and President of a radio broadcasting firm. In Army Air Corps during World War II. Member Delta Chi, Delta Theta Phi, Lions, Elks and Masons. He and his wife Sharon have two children.



FOLEY, Frank W. (Democrat) Senator from the 49th District of Clark County. First elected to the Senate in 1957 will be serving his third term. Born in 1913 in Spokane. Received a B.A. Degree from Washington State University and his LL.B. from Gonzaga. He is an attorney. Was a Lt. Colonel in the Army during World War II. Member of the American Legion and Elks. He is married and his wife's name is Betty.



Senators



FREISE, Herbert H. (Republican) Senator from the 11th District of Walla Walla County will be serving his third term. Born in 1917 in Palatine, Illinois. He is a lawyer having graduated from Valparaiso University receiving an A. B. and LL.B. Degrees. Served in the Navy during World War II. He and his wife Vera have three children.

GALLAGHER, Michael J. (Democrat) Senator from the 45th District of King County. Served in the House, 1943-44 Ex.-49-50 Ex. will be serving his fourth term in the Senate. Born in Indianapolis, Indiana in 1911. Attended business college and is engaged in real estate business. He is married and his wife's name is Dorothy.



GISSBERG, William A. (Democrat) Senator from the 39th District of Island and Snohomish Counties. First elected in 1952 he will be serving his fourth term. Born in 1922 in Everett. He has been elected President Pro-Tem of the Senate. He is an attorney having graduated from the University of Washington. A member of the Moose and Elks. Married and he and his wife Helen have five children.

GREIVE, R. R. (Bob) (Democrat) Senator from the 34th District of King County will be serving his 5th Term. Born in West Seattle in 1919. Graduated from the Miami, Florida School of Law. He has also attended the Seattle University and University of Washington. He is an attorney. In the Coast Guard during World War II. Member Lions and the American Legion. He and his wife Barbara Ann have five children.



Senators

GUESS, Sam C. (Republican) Senator from the 6th District of Spokane County. Serving his first term having been elected in 1962. Born in 1909 in Greenwood, Mississippi. He is a Civil Engineer having graduated from the University of Mississippi with a B.S. in Civil Engineering. He served with the First U. S. Army in Europe and was discharged a Major. Belongs to Sigma Nu Fraternity. He and his wife Dorothy have two children.



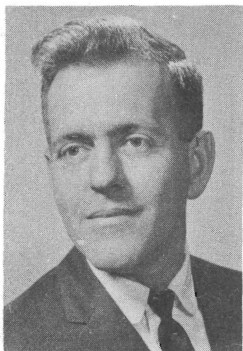
HALLAUER, Wilbur G. (Democrat) Senator from the 1st District of Douglas and Okanogan Counties. Served four terms in the House and will be serving his third term in the Senate. Born in 1914 in Webster, New York. In 1937 he received B.A. degree from the University of Washington. He is manager for a fruit processing factory. He and his wife Rose Marie have two daughters.

HANNA, H. B. "Jerry" (Democrat) Senator from the 12th District of Chelan County. Served two terms in the House will be serving his third term in the Senate. Born in Wenatchee in 1921. Attended Wenatchee Junior College and graduated from Valparaiso University Law School and is an attorney. Served in the Army during World War II. Member Elks and Eagles. He and his wife Grace have two children.

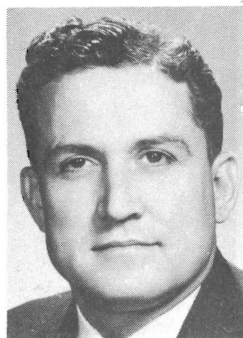


HENRY, Al (Democrat) Senator from the 17th District which comprises Klickitat, Skamania and part of Clark County. Served four terms in the House and will be serving his third term in the Senate. He was born in Ness County, Kansas. Has a business education and is a telephone company executive. Served in World War II. Member of the Elks and a Past President of the Eagles.

Senators



HERR, Gordon (Democrat) Senator from the 31st District of King County. Served one term in the House and will be serving his first term in the Senate. Born in Seattle in 1926. Attended the University of Washington and is in manufacturing and retail lumber business. Served in the Air Force during World War II. Member Elks, Knights of Columbus and American Legion. He and his wife Patricia have five children.

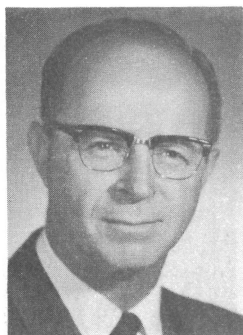


HERRMANN, Karl V. (Democrat) Senator from the 4th District of Spokane County will be serving his fifth term in the Senate. Born in Granite Falls in 1915. Attended the University of Puget Sound, Washington State University and a graduate of Gonzaga Law School and is a lawyer. He and his wife Beatrice have four children.



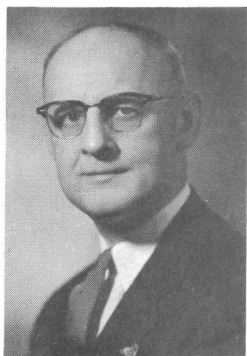
KEEFE, James Edward (Democrat) Senator from the 3rd District of Spokane County. Will be serving his fifth term. Born in New York City in 1908. Graduate of Gonzaga High School. Now employed as a sales manager. Member of the Elks Club. He and his wife Eileen have two sons.

KNOBLAUCH, Reuben A. (Democrat) Senator from the 25th District of Pierce County. Served three terms in the House and will be serving his fourth term in the Senate. Born in 1914 in Sumner. Graduated from Sumner High School. He is a retired farmer. Served in World War II. Belongs to the VFW, Elks, American Legion, Kiwanis and the Grange. He is unmarried.



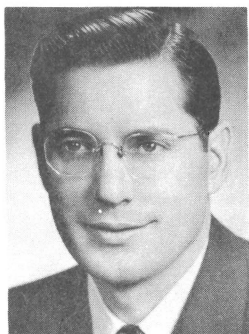
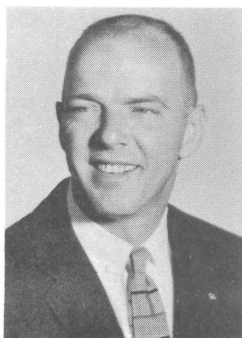
Senators

KUPKA, George (Democrat) Senator from the 27th District of Pierce County served four terms in the House and will be serving his third term in the Senate. Born in South Prairie in 1912. High school graduate and is engaged in the jewelery business. During World War II he served in the Navy. Member Elks and Eagles. He is unmarried.



LENNART, Ernest W. (Republican) Senator from the 41st District of Whatcom County. Served in the House three terms and will be serving his third term in the Senate. Born in Sweden in 1893. Attended college and has done some graduate work. He is retired. Served in World War I. Member of the Masons, Mystic Shrine, VFW, the Grange, Farm Bureau and American Legion. He and his wife Edith have five children.

LEWIS, Harry B. (Republican) Senator from the 22nd District of Thurston County served two terms in the House and will be serving his first term in the Senate. Born in Pittsburgh, Penn. in 1927. Attended University of Puget Sound and is a graduate of the University of Washington. He is owner and manager of the Hyak Company. Was in the Army during World War II. Member Society of American Foresters, Elks, Phi Delta Theta and American Legion. He and his wife Jane have three children.



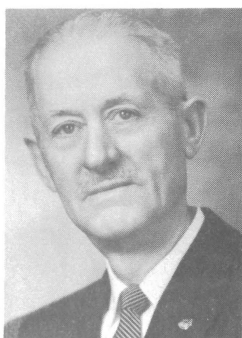
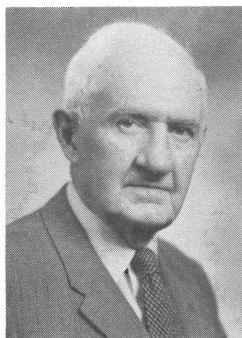
MARDESICH, August P. (Democrat) Senator from the 38th District of Island and Snohomish Counties. Served in the House, 1950 Ex., -51-53-55-57-59-61. Will be serving his second session in the Senate. Born in 1920 in San Pedro, Calif. Graduate of the University of Washington Law School. He is an attorney and commercial fisherman. Member Elks, VFW and American Legion. He and his wife Rosemary have five children.

Senators



McCORMACK, Mike (Democrat) Senator from the 16th District of Benton and Franklin Counties has served two terms in the House and second term in the Senate. Born in Ohio in 1921. Graduate of Washington State University with Masters degree in Chemistry and is a Chemist at Hanford Atomic Products Operation. Member of the Masonic Lodge, Shrine, Sigma Chi Fraternity, American Legion, Grange and American Chemical Society. He and his wife Margaret have three children.

McCUTCHEON, John T. (Democrat) Senator from the 29th District of Pierce County. Served one term in the House and will be serving his fourth term in the Senate. Born in Tacoma in 1892. Attended the University of Washington and graduated from Indiana University Law School and is a lawyer. Member of the Eagles and Grange. Married and he and his wife Tina have three children.



McMILLAN, David E. (Democrat) Senator from the 2nd District of Pend Oreille and Stevens Counties. Serving his eighth session. Born in 1897 in Colville. He attended the University of Washington and is a farmer and cattleman. Served in World War I. Member of the American Legion, Elks and Masons. He and his wife Mary have two daughters.

MORGAN, Frances Haddon (Democrat) Senator from the 23rd District of Kitsap County. Served one term in the House and will be serving her second term in the Senate. Following in the footsteps of her mother, the late Lulu D. Haddon, who served in the House and Senate. Graduate of business college she is owner and operator of a welcoming service. Was born in Bremerton. Member Ladies of Elks, Soroptimists, PTA and Washington Association for Retarded Children. She and her husband Osmore have two grown daughters.



Senators

MORIARTY, Charles P., Jr. (Republican) Senator from the 36th District of King County. Served House 1957-59 appointed to the Senate in 1959 elected to unexpired term in 1960, will be serving his second term. Born in 1927 in Seattle. Graduate of University of Washington Law School and is an attorney. Veteran of World War II. He is married and his wife's name is Marion.



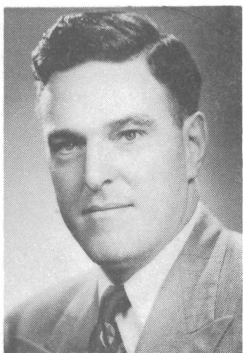
NEILL, Marshall A. (Republican) Senator from the 9th District of Whitman County. Served four terms in the House will be serving his third term in the Senate. Born in Pullman in 1914. Graduated from the Washington State University with a B. A. in Political Science and received his LL.B. from the University of Idaho. He is a lawyer. In the Navy during World War II. Member of Masonic bodies and the Elks. Married and he and his wife Marion have three children.

PETERSON, Lowell (Democrat) Senator from the 40th District of San Juan and Skagit Counties will be serving his first term. Born in Pateros in 1921. He is an oil distributor. Served in Navy during World War II. Member American Legion, Eagles and Elks. He and his wife Ruth have three children.



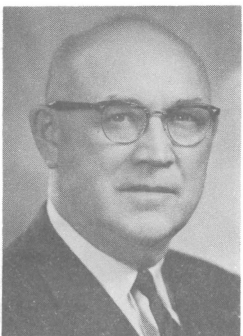
PETERSON, Ted G. (Republican) Senator from the 44th District of King County. Serving his second term in the Senate. Was born in Seattle in 1904. Attended the University of Washington and is now President of a wholesale equipment and supply co. In Washington National Guard four years. Member Masons, Shrine, Lions International and Elks. He and his wife Ruth have two children.

Senators



PETRICH, John A. (Democrat)
 Senator from the 26th District of Pierce County. Served one term in the House and will be serving his second term in the Senate. Born in Tacoma in 1919. Attended University of Washington and graduated from Santa Clara University and Georgetown University Law School. He is an attorney. Member of the Elks. He and his wife Margaret have six children.

RASMUSSEN, A. L. (Slim) (Democrat)
 Senator from the 28th District of Pierce County. Served eight terms in the House and will be serving his second term in the Senate. Born in 1909 in Everett. Attended the public schools of Tacoma and is a railroad machinist for the Northern Pacific. He and his wife Eleanor have four children.



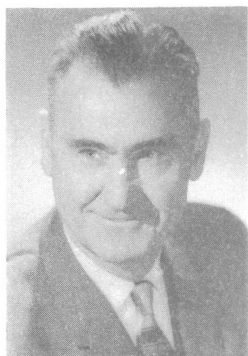
RAUGUST, W. C. (Republican)
 Senator from the 8th District of Adams, Ferry and Lincoln Counties. Served in the House four terms and served in the Ex. Sess. of 1950 will be serving his fourth term. Born in Russia in 1895 of Dutch and German parentage. Business education he has farming interests, is president and director of several companies and manager of a farmer's cooperative dealing in grain and farm implements. In the Navy during World War I. Member American Legion and Lions Club. He and his wife Reca have five children.

REDMON, Fred G. (Republican)
 Senator from the 14th District of Yakima County was appointed to the Senate January 22, 1964 to fill out the unexpired term of F. Stuart Foster. He was elected in November 1964 so will be serving his first session. Born in Craig, Missouri in 1897. Graduate of Yakima High School he is in road construction. Veteran of World War I. Member of Masons, Elks, Eagles and the American Legion. He and his wife Sadie have three children.



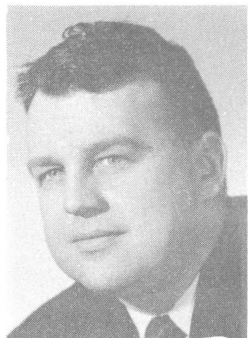
Senators

RILEY, Edward F. (Democrat) Senator from the 35th District of King County served six terms in the House and will be serving his fourth term in the Senate. Born in Seattle in 1898. Attended the University of Washington and is now owner of a travel agency. During World War I he served in the Army. Member Kiwanis, Knights of Columbus, American Legion and Theta Delta Chi. He and his wife Freda have four children.



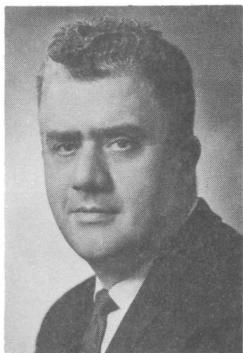
RYDER, John N. (Republican) Senator from the 46th District of King County. Served one term in the House and will be serving third term in the Senate. Born in Seattle in 1907. Graduate of Graduate School of Banking at Rutgers University and is a Banker. Member Ravenna Lodge F. and A.M. He and his wife Margaret have three children.

SANDISON, Gordon (Democrat) Senator from the 24th District of Clallam, Jefferson and Mason Counties. Served in the House five terms and will be serving his second term in the Senate. Born in Auburn in 1919. University graduate and has taken come Post Graduate Work. He is an insurance agent and also in real estate business. Served in the Marines during World War II. Member Elks, Eagles, VFW, Grange, American Legion and Alpha Tau Omega. He and his wife Muriel have five children.



STENDER, John H. (Republican) Senator from the 30th District of King County will be serving his second session. Born in 1916 in Montana. Graduated from high school and attended college. He is International Vice President of of the Boilermakers & Blacksmiths International Union. Member of the Eagles and F.A.M. He has four children.

Senators



TALLEY, Don L. (Democrat) Senator from the 18th District of Cowlitz and Wahkiakum Counties. Will be serving his third term. Born in Tacoma in 1918. Graduate of high school and is employed as a checker for the Port of Longview. During World War II he served in the Navy. Member Masons, Elks, Moose, Eagles, American Legion and D.A.V. He and his wife Delores have four children.

THOMPSON, Albert C., Jr. (Republican) Senator from the 48th District of King County will be serving his second term. Born in Tacoma in 1919. Graduate of the University of Washington is self employed, owner operator of retail drug store. He and his wife Nancy have two children.



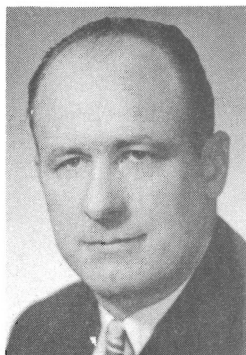
WASHINGTON, Nat W. (Democrat) Senator from the 13th District of Grant and Kittitas Counties. Served one term in the House and will be serving his fourth term in the Senate. Born in Coulee City in 1914. Graduate of the University of Washington Law School and is an attorney. Served in the Air Force during World War II. Member of the Grange and the Masonic Lodge. He and his wife Wanda have two sons.

WILLIAMS, Walter B. (Republican) Senator from the 43rd District of King County served one term in the House and serving his first term in the Senate. Born in Seattle in 1921. Graduate of University of Washington and Harvard Law School and is in mortgage banking business. In Marine Corps during World War II. He and his wife Marie have four children.



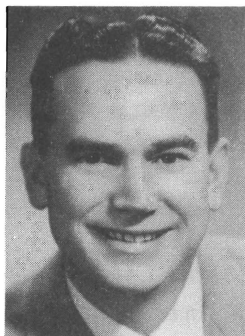
Senators

WOODALL, Perry B. (Republican) Senator from the 15th District of Yakima County. Served six terms in the House and will be serving his third term in the Senate. Was Senate Republican Floor Leader in 1959-61 and 63. Born in Buena in 1912. Graduate of Yakima Valley Junior College and University of Washington Law School and is now a lawyer and farmer. Served in the Navy during World War II. Member Elks, Eagles, American Legion, Grange and Farm Bureau. He and his wife Joy have a daughter.

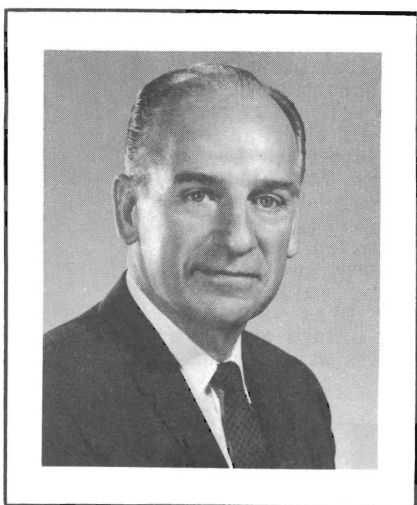


BOWDEN, Ward (Democrat) Secretary of the Senate is from the 39th District of Island and Snohomish Counties. Worked in the House from 1935 through the session of 1955. Served as Assistant Chief Clerk in 1941-43-51 and 55. This will be his fifth session as Secretary of the Senate. Born in 1912 in Everett. He is a graduate of Everett High School. Owner and publisher of two weekly newspapers. Member of the Elks Club. He and his wife Doris Anne have seven children.

JOHNSON, Charlie (Democrat) Sergeant-at-Arms of the Senate is from the 22nd District of Thurston County. Will be serving his fifth session. Sergeant-at-Arms of the House in 1955 and member of the House in 1951. Born in Elko, Wyoming in 1911. Graduate of high school he is now a business broker. Member of the Eagles, Elks and W.A.C. He and his wife Lenore have four children.



Senators



LIEUTENANT GOVERNOR

JOHN ANDREW CHERBERG (Democrat) from the 36th District of King County Elected Lieutenant Governor in 1956 and re-elected again in 1960 and 1964. Lieutenant Governor Cherberg has served as presiding officer (President) of the Senate since 1957 and as Chairman of the Senate Rules Committee. He was born in Pensacola, Florida in 1910. In 1933 he received his B.B.A. degree in Economics and Marketing & Advertising; in 1934 a Life Teaching Diploma from the University of Washington, College of Education. Former teacher and athletic coach at Cleveland, Queen Anne High Schools and the University of Washington, all of Seattle. At present he is a television executive. Member Elks, Eagles, Moose and Sigma Nu Fraternity. He and his wife Betty have three children.

**THE HOUSE
OF
REPRESENTATIVES**

ROSTER OF MEMBERS

House of Representatives

NAME	ADDRESS	DIST.NO.	POLITICAL PARTY
KINK, Dick	1124 - 15th St., Bellingham.	42	D
KIRK, Gladys	1236 Bigelow N., Seattle	36	R
KLEIN, William C.	5909 Kauffman, Vancouver	49	D
KULL, Robert (Bob)	811 South 36th Ave., Yakima	14	D
LELAND, Alfred E. (Al)	8326 N. E. 110th Pl., Kirkland	48	R
LITCHMAN, Mark	13706 2nd N. E., Seattle	45	D
LUX, Mary Stuart	2621 Capitol Way, Olympia	22	D
LYNCH, Marjorie	802 Pickens Road, Yakima	14	R
MAHAFFEY, Audley F.	5241 - 16th N. E., Seattle	46	R
MARSH, Daniel "Dan"	400 E. 19th St., Vancouver	49	D
MARZANO, Frank S.	2501 So. Melrose, Tacoma	27	D
MAST, Fred R.	1017 Minor, Seattle	35	R
MAY, William J. S. (Bill)	711 W. Waverly Pl., Spokane	3	D
McCAFFREE, MRS. Mary Ellen	5014 - 18th N. E., Seattle	32	R
McCORMICK, W. L. (Bill)	W. 3909 Lyons, Spokane	5	D
McDUGALL, Bob	Rt. 2, Box 2001, Wenatchee	12	R
MOON, Charles	Rt. 2, Box 427-A, Snohomish	39	D
MOOS, Donald W.	Edwall	8	R
MORPHIS, Richard W.	3504 Riverview Dr., Spokane	7	R
NEWHOUSE, Irving	Rt. 1, Box 130, Mabton	15	R
NEWSCHWANDER, Charles E.	2140 Bridgeport Way, Tacoma	29	R
O'BRIEN, John L.	5041 Lake Wash. Blvd. S., Seattle	33	D
O'DELL, Robert	2022 N. W. Benton, Camas	17	R
O'DONNELL, Ann T.	1815 E. Harrison, Seattle	37	D
OLSEN, Ray	1400 Hubbell Place, Apt. 710, Seattle	35	D
PERRY, Robert A.	1154 N. 92nd, Seattle	45	D
PIERRE, George	5922 - 42nd S.W., Seattle	34	D
PRITCHARD, Joel M.	3233 - 29th W., Seattle	36	R
RADCLIFFE, W.O.E.	437 - 21st St., Bellingham	42	D
ROGERS, Jack	10838 Highway 21, Bremerton	23	D
SALING, Gerald L.	W. 320 Nebraska, Spokane	5	R
SAVAGE, Charles R.	2011 King St., Shelton	24	D
SAWYER, Leonard A. "Len"	703 - 4th St. S. E., Puyallup	25	D
SCHAEFER, Robert M.	122 N. Devine, Vancouver	49	D
SHERIDAN, George P.	1510 S. 7th St., Tacoma	27	D
SLAGLE, Frank	1198 N. Main, Colville	2	D
SMITH, Sam	1814 - 31st, Seattle	37	D
SWAYZE, Frances G.	Rt. 2, Box 255, Gig Harbor	26	R
TAPLIN, Ben F.	1228 - 6th St., Clarkston	10	D
TAYLOR, Richard "Dick"	721 - 5th St., Mukilteo	38	D
THOMPSON, Alan	310 Cowlitz View Dr., Castle Rock	18	D
TRAYLOR, W. S. "Bill"	Rt. 2, Box 2400, Port Angeles	24	D
UHLMAN, Wes C.	2315 N. 40th, Seattle	32	D
VALLE, Georgette	19661 Marine View Dr. S.W., Seattle	31	D
WANG, Arnold S.	1003 Callahan Dr., Bremerton	23	R
WARNKE, Frank J.	29457 - 51st S., Auburn	30	D
WHETZEL, Jonathan	1708 E. Highland Dr., Seattle	43	R
WITHERBEE, C. G.	13647 - 24th S., Seattle	31	D
WOLF, Harold E. "Hal"	Clark Road, Yelm	22	R

ROSTER OF MEMBERS**House of Representatives**

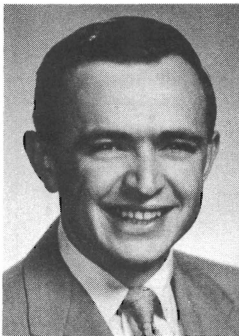
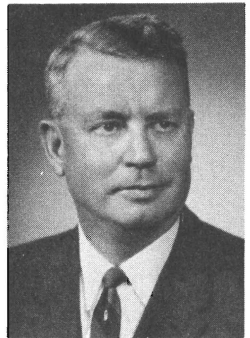
NAME	ADDRESS	DIST.NO.	POLITICAL PARTY
ADAMS, Alfred O.	W. 909 Melinda Lane, Spokane	6	R
AHLQUIST, H. Maurice	Rt. 1, Box 63, Touchet	11	R
ANDERSEN, James A.	3008 - 98th N.E., Bellevue	48	R
ANDERSON, Eric O.	627 Grand Ave., Hoquiam	21	D
ANGEVINE, Wayne G.	6202 S. 117th Pl., Seattle	31	D
AVEY, Art	Kettle Falls	2	D
BACKSTROM, Henry	Arlington	39	D
BECK, C. W. "Red"	Rt. 5, Box 15, Port Orchard	23	D
BERENTSON, Duane	1490 Country Club Dr., Burlington	40	R
BERGH, Arnie	822 N.W., 107th, Seattle	44	D
BLEDSE, Stewart	Rt. 3, Ellensburg	13	R
BOTTIGER, R. Ted	858 So. 113th St., Tacoma	28	D
BOZARTH, Horace W.	Mansfield	1	D
BRACHTENBACH, Robert F.	Rt. 2, Box 727, Selah	14	R
BRAUN, Eric D.	225 Cottage Ave., Cashmere	12	D
BROUILLET, Frank Buster	619 - 7th Ave. S.W., Puyallup	25	D
BURTCH, Jack L.	2623 Bench Dr., Aberdeen	21	D
CANFIELD, Damon R.	1368 Upland Drive, Sunnyside	15	R
CHATALAS, Wm. (Bill)	2802 - 33rd S., Seattle	33	D
CLARK, Newman (Zeke)	5760 - 64th N. E., Seattle	43	R
CONNER, Paul H.	Rt. 1, Box 60, Port Angeles	24	D
COPELAND, Tom	Rt. 3, Walla Walla	11	R
CUNNINGHAM, Norwood	750 Alford Ave., Kent	30	R
DAY, William S. "Bill"	S. 3004 Cherry Lane, Spokane	4	D
DeJARNATT, Arlie U.	1215 - 23rd Ave., Longview	18	D
DOOTSON, Jack	3601 Rockefeller Ave., Everett	38	D
ELDER, Hayes	3250 California S.W., Seattle	34	D
ELDRIDGE, Don	1535 Kincaid, Mount Vernon	40	R
EPON, Mrs. Kathryn	7 North Walnut Rd., Spokane	4	D
FLANAGAN, S. E. "Sid"	Quincy	13	R
GALLAGHER, P.J. "Jim"	125 So. 72nd St., Tacoma	28	D
GARRETT, Avery	450 Langston Rd., Renton	47	D
GOLDSWORTHY, Robert F.	Rt. 2, Rosalia	9	R
GORTON, Slade	1549 N.E. 102nd, Seattle	46	R
GRANT, Gary	3741 - 136th S. E., Bellevue	47	D
HARRIS, Edward F.	S. 1723 Maple Blvd., Spokane	7	R
HAUSSLER, Joe D.	S. High Dr. (Box 949), Omak	1	D
HAWLEY, Dwight S.	3310 N.W. 80th, Seattle	44	R
HOOD, Jack C.	Rt. 3, Ferndale	41	R
HUMISTON, Homer	607 No. Stadium Way, Tacoma	26	R
HUNTLEY, Elmer C.	Thornton	9	R
HURLEY, Mrs. Joseph E.	730 E. Boone Ave., Spokane	3	D
JASTAD, Elmer	231 W. Main St., Morton	20	D
JOHNSON, Doris J.	737 Tacoma Place, Kennewick	16	D
JOHNSTON, Elmer E.	714 W. 14th Ave., Spokane	6	R
JOLLY, Dan	353 East Borah, Connell	16	D
JUELING, Helmut L.	215 Contra Costa, Tacoma	29	R
KALICH, Hugh	Rt. 1, Toledo	20	D
KING, Chet	435 - 7th St., Raymond	19	D
KING, Richard "Dick"	6915 McDougal, Everett	38	D

Representatives



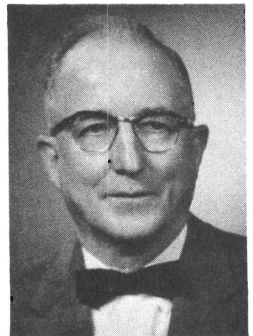
ADAMS, Dr. Alfred O. (Republican) Representative from the 6th District of Spokane County serving his seventh term. Born in Paola, Kansas in 1897. Attended the University of Missouri for two years and is a graduate of Washington University Medical School, St. Louis where he received his M. D. He is a retired physician and surgeon. Served in World War I. Member of the Masons. He is married and has one son.

AHLQUIST, H. Maurice (Republican) Representative from the 11th District of Walla Walla County. Will be serving fifth term. Born in Denver in 1902. Graduate of Dartmouth College, Hanover, New Hampshire. He is a farmer on irrigated acres and member of the Columbia Interstate Compact Commission. Member of the Masons, Elks, Farm Bureau, Grange, Chamber of Commerce and Lambda Chi Alpha Fraternity. He and his wife Bobbie have two sons.



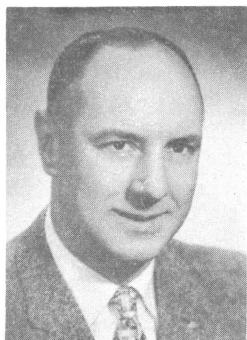
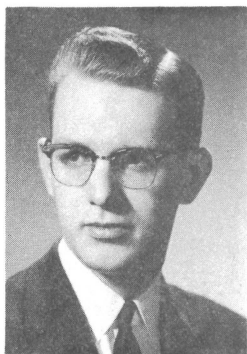
ANDERSEN, James A. (Republican) Representative from the 48th District of King County will be serving his fourth term. Born in Auburn in 1924. Received B.A. degree in Political Science and LL.B. degree from the University of Washington and is a lawyer. Combat Infantryman during World War II. Member of various community and veterans' groups. He and his wife Billiette have two children.

ANDERSON, Eric O. (Democrat) Representative from the 21st District of Grays Harbor County. Will be serving his third term. Born in New Zealand in 1902. High school graduate he is now purchasing agent and store manager. Member of the Grange, Masonic Lodge, Eastern Star and I.W.A. Timber Workers. He and his wife Ida May have a son and daughter.



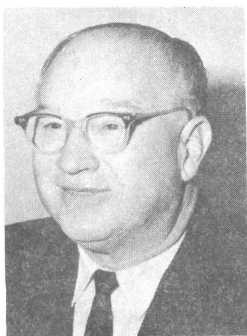
Representatives

ANGEVINE, Wayne G. (Democrat) Representative from the 31st District of King County served one term in the Senate and will be serving his first term in the House. Born in Seattle in 1935. Graduated from Seattle University with B.A. in political science and has done graduate work at University of Washington and is a life insurance salesman. He and his wife Fran have five children.



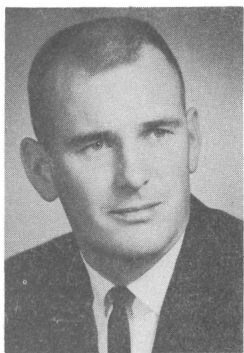
AVEY, Art (Democrat) Representative from the 2nd District of Pend Oreille and Stevens County served in the House in 1959 and again elected to serve in 1965. Born in Cranbrook, British Columbia, Canada in 1918. Graduate of Spokane Junior College and attended Washington State University and Gonzaga. Co-owner of Avey Bros. Lumber Co. Pilot in Army Air Force and Captain of the Reserves. Member Masons, Shrine, Elks, Eagles, Legion and VFW. He and his wife Jean have four daughters.

BACKSTROM, Henry (Democrat) Representative from the 39th District of Island and Snohomish Counties. Will be serving his fourth term. Born in New Britian, Conn. in 1897. Graduate of Olds College of Agriculture and attended Edson Institute and is a Ford dealer and owner of a truck fabrication plant. Member Elks, Lions, Washington Athletic Club, and Chairman of Trustees of WSADA Insurance Association. He and his wife Elvira have three children.



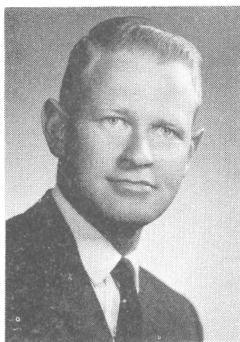
BECK, Clifford W. "Red" (Democrat) Representative from the 23rd District of Kitsap County will be serving his third term. Born in Bloomington, Indiana in 1907. Attended Stanford University Self employed as a property manager. Served 10 years in the Navy and is a retired Naval Ordnance Engineer. Member Elks, Fleet Reserve Association and South Kitsap Chamber of Commerce. He is married and his wife's name is Hope Grace.

Representatives



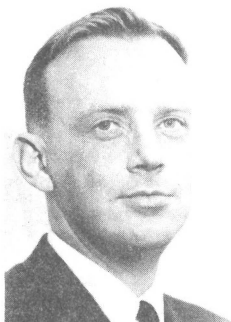
BERENTSON, Duane (Republican) Representative from the 40th District of San Juan and Skagit Counties. Serving his second term. Born in Anacortes in 1928. Received a B.S. degree from the Pacific Lutheran University and has done some graduate work at the University of Washington. He is a broker-dealer in securities. Naval Air Reservist. Member of Sigma Nu Fraternity. He and his wife Joanne have five children.

BERGH, Arnie (Democrat) Representative from the 44th District of King County will be serving his third term. Born in Seattle in 1931. Graduate of the University of Washington with B.A. degree. He is in commercial real estate and insurance business. Captain, Jet pilot in Air Defense Command for four years. He and his wife Shirley have four children.



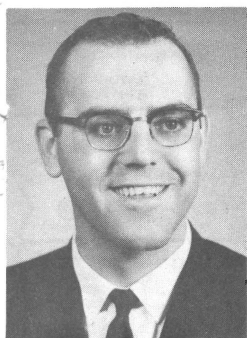
BLEDSON, Stewart (Republican) Representative from the 13th District of Grant and Kittitas Counties will be serving his first term. Born in Long Beach, Calif. in 1922. Attended U.C.L.A. and is a graduate of Washington State University. He is a cattle rancher. Member Phi Delta Theta, Elks and Wash. Cattlemen's Association. He and his wife Betsy have four children.

BOTTIGER, R. Ted (Democrat) Representative from the 28th District of Pierce County will be serving his first term. Born in Tacoma in 1932. Has B.A. degree from University of Puget Sound and graduate of the University of Washington Law School. He is an attorney. He and his wife Darlene have two children.



Representatives

BOZARTH, Horace W. (Democrat) Representative from the 1st District of Douglas and Okanogan Counties will be serving his sixth term. Born in Fairfield in 1894. Graduate of Gonzaga University with B.A. degree and he is a farmer. Officer of the Washington State Grange and member of the Eagles Lodge. He is married and his wife's name is Christine.



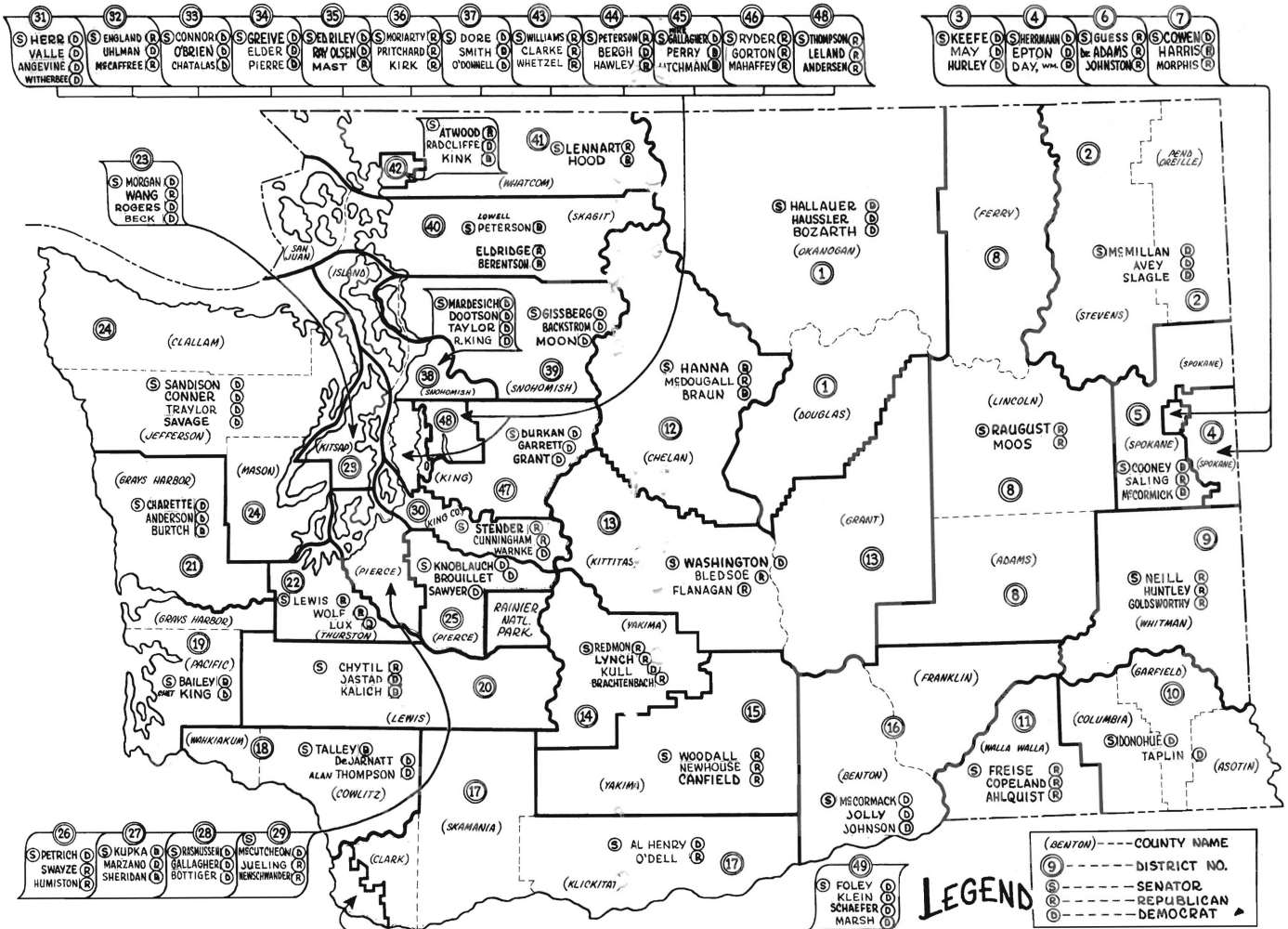
BRACHTENBACH, Robert F. (Republican) Representative from the 14th District of Yakima County will be serving his second term. Born in Sidney, Nebraska in 1931. Graduate of the University of Washington with B.S. and LL.B. degrees and is a lawyer. Member Judicial Council 1963-1965, Elks. Local, State and National Bar Associations, active in U.G.N., various civic organizations and was one of 10 outstanding young men of Washington in 1963. He and his wife Nancy have five children.

BRAUN, Eric D. (Democrat) Representative from the 12th District of Chelan County. Serving his fifth term. Born in Norfolk, Nebraska in 1910. Graduate of high school and a mortuary college and is a funeral director. Member Masons, Eagles and Rotary Club. He and his wife Eunice have two children.

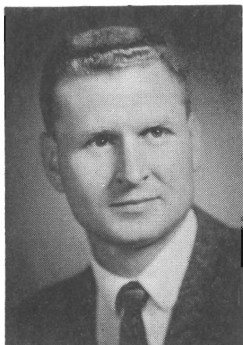


BROUILLET, Frank B. (Democrat) Representative from the 25th District of Pierce County will be serving his sixth term. He was born in Puyallup in 1928. University graduate with B.A., B.Ed., M.A. and is a Doctoral Candidate. He is a teacher. Served in Army Intelligence. Member Masonic Orders, Elks, Sigma Chi and the Grange. He and his wife Marge have two children.

STATE OF WASHINGTON ~ 1965 LEGISLATIVE ROSTER

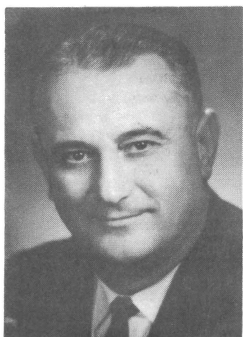
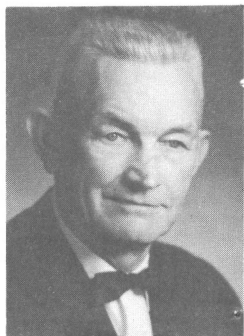


Representatives



BURTCH, Jack L. (Democrat) Representative from the 21st District of Grays Harbor County. Serving his third term. Born in Portland in 1926. Graduate of Whitman College with B.A. in Political Science and from the University of Washington Law School. Now a practicing attorney. In the Navy during World War II. He and his wife Edna have three children.

CANFIELD, Damon R. (Republican) Representative from the 15th District of Yakima County will be serving his seventh term. Born in Siloam Springs, Arkansas in 1897. Attended the University of Washington and graduated from Washington State University and is a cattle and fruit rancher. Member Masons, the Grange and Farm Bureau. He and his wife Marie have a son and daughter.



CHATALAS, William "Bill" (Democrat) Representative from the 33rd District of King County will be serving his third term. Born in Constantinople, Turkey in 1907. Graduated from high school and attended U. of W. ext. school. He is a sales and public relations manager. Member Order of Ahepa, Eagles, Rainier Businessmen's Club, Mt. Baker Improvement Club, C of C, PTA and Jackson St. Community Council - Scouts. He and his wife Goldie have three sons.

CLARK, Newman H. (Republican) Representative from the 43rd District of King County. Served 1950 Ex. Sess. by appointment was elected to serve his sixth term. Born in Hawthorne, New Jersey in 1899. Graduate of the University of Washington Law School and is a lawyer. Served in Army during World War I and in the Navy in World War II. Member of the Masons and Shrine. He and his wife Marian have two sons.



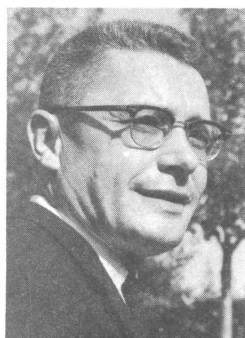
Representatives

CONNER, Paul H. (Democrat) Representative from the 24th District which comprises Clallam, Jefferson and Mason Counties. Appointed to the Senate in 1957 and is now serving his fourth term in the House. Born in Port Angeles in 1925. Attended Port Angeles Business College, Western Washington College and University of Washington and is a technical assistant. Member Eagles, Grange, Lions, Elks and Toastmasters. He and his wife Thelma have four children.



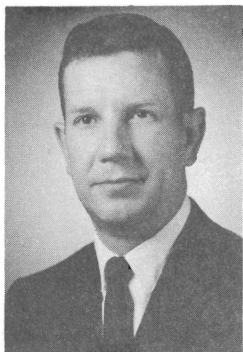
COPELAND, Thomas L. (Republican) Representative from the 11th District of Walla Walla County will be serving his fifth term. Republican floor leader in the 1965 Session. Born in Pendleton, Ore. in 1924. Attended Kemper Military School and Washington State University and is a farmer. Captain in the Army in World War II. Member Elks, American Legion, Farm Bureau, Masons, Chamber of Commerce and Sigma Nu Fraternity. He and his wife Dolly have three children.

CUNNINGHAM, Norwood (Republican) Representative from the 30th District of King County serving his first term. Born in Sunnyside in 1916. Graduate of George Fox College and has done Post graduate work at University of Washington and University of Oregon. Is transportation supervisor for the Kent Public Schools. Served in the Army during World War II. Member Rotary Club International. He and his wife Florence have two sons.



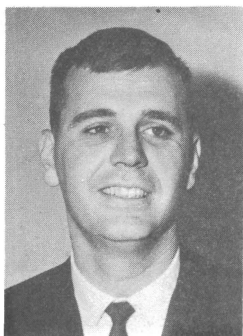
DAY, William S. (Democrat) Representative from the 4th District of Spokane County will be serving his fourth term. He was Speaker of the House in 1963 Session. Born in Rockford, Illinois in 1923. Graduate of Palmer College of Chiropractic in Davenport, Iowa. He is a Chiropractor. In Army during World War II. Member Kiwanis and Veterans of Foreign Wars. He and his wife Norma have five children.

Representatives



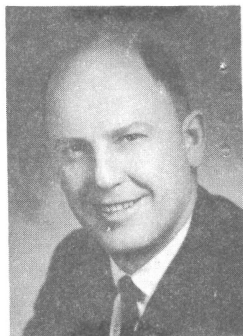
DeJARNATT, Arlie U. (Democrat) Representative from the 18th District of Cowlitz & Wahkiakum Counties will be serving his third term. Born in Glezen, Indiana in 1923. Received an A.B. degree from Cornell College and his Masters from Colorado State College. High school social studies teacher and athletic coach. Served four years in the Marine Corps. Member of F.O.E. Aerie No. 1555. He and his wife Donna have five children.

DOOTSON, Jack (Democrat) Representative from the 38th District of Island and Snohomish Counties will be serving his fourth term. Born in Pasadena, Calif. in 1914. Graduate of George Washington University Law School, University of Washington School of Economics and Business and graduate work at George Washington U, Columbian College, Purdue University, Univ. of Washington and Mexico City College. Naval Aviator as a Lt. Commander. Engineer for Great Northern Railway. He is unmarried.



ELDER, Hayes (Democrat) Representative from the 34th District of King County was appointed in July, 1964 to fill the vacancy caused by the death of Max Wedekind. He will be serving his first term in the House. Born in Ketchikan, Alaska in 1938. He is a Phi Beta Kappa, Magna Cum Laude in Political Science from University of Washington and was one of the top 10% in the University of Washington Law School. Is an attorney. He is married and his wife's name is Sylvia.

ELDRIDGE, Don (Republican) Representative from the 40th District of San Juan and Skagit Counties serving his 7th term. Born in Mt. Vernon in 1919. Graduated from Western Wash. College of Education with B.A. in Education. He is a retail merchant. Served in Army Air Force in World War II. On Board of Trustees for the Western Washington College of Education, member of the Rotary Club, Chamber of Commerce and the J C's, active in Boy Scouts and member executive committee, Wash. Retail Council. He and his wife Harriett have four children.

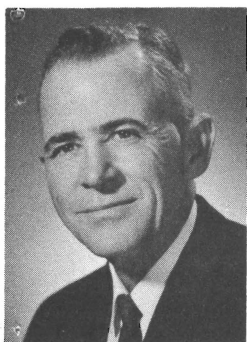


Representatives

EPTON, Mrs. John W. (Kathryn) (Democrat) Representative from the 4th District of Spokane County served in the House in 1957 this will be her second term. Born in Idaho. She has a B.A. degree from Gonzaga. She is a volunteer worker for the handicapped (Teacher; Executive Secretary), Treasurer of Parents' Cooperative Society for the Handicapped, a non-profit institution. She and her husband Dr. John W. Epton have five children.



FLANAGAN, Sid (Republican) Representative from the 13th District of Grant and Kittitas Counties will be serving his third term. He was born in Bellingham in 1909. Graduate of the University of Washington where he majored in public utilities. A farmer and cattleman. Member of the Elks and Moose. He and his wife Vyvien have three children.



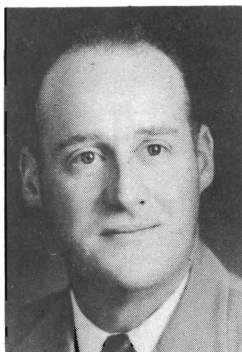
GALLAGHER, P. J. "Jim" (Democrat) Representative from the 28th District of Pierce County will be serving his third term. Born in Taylor, Wash. in 1915. Graduate Washington State University. Owner and operator of a service station. Member Knights of Columbus and Eagles. He and his wife Mabel have six children.



GARRETT, Avery (Democrat) Representative from the 47th District of King County will be serving his fourth term. Born in Georgia in 1916. High school education and is employed as a sheet metal worker. Member Masons and Royal Arch Masons. He and his wife Edna May have a son and three daughters..

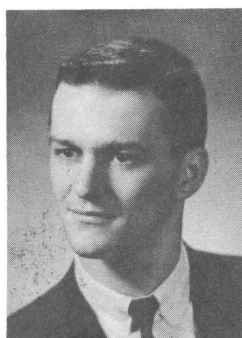
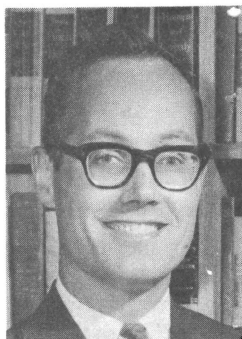


Representatives



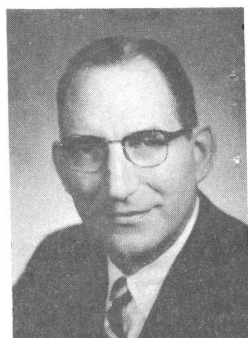
GOLDSWORTHY, Robert F. (Republican) Representative from the 9th District of Whitman County will be serving his fifth term. Born in Rosalia in 1917. Received a B.A. degree from the Washington State University and is a farmer. He served in World War II and was in the U. S. Air Force during the Korean Conflict. Member Masons, American Legion, Military Order of the World Wars, Order of Daedalians. He and his wife Jean have two children.

GORTON, Slade (Republican) Representative from the 46th District of King County will be serving his fourth term. Born in Chicago in 1928. Received his A.B. degree from Dartmouth College and graduated from Columbia University with LL.B. degree and is a practicing attorney. Served in the Army 1946-47 and in the Air Force from 1953 to 1956 as a 1st Lieutenant. He and his wife Sally have three children.



GRANT, Gary (Democrat) Representative from the 47th District of King County serving his second term. Born in Chippewa Falls, Wisconsin in 1934. Graduate of St. Martin's College with B.A. in Industrial Relations and is employed in labor relations. Member Junior Chamber of Commerce and Toastmasters. He and his wife Tanya have three children.

HARRIS, Edward F. (Republican) Representative from the 7th District of Spokane County will be serving his sixth term. Born in Harrison, Idaho in 1909. Graduated from the School of Business, University of Idaho and Gonzaga Law School and is a practicing attorney. He and his wife Marjorie have a son and daughter.



Representatives

HAUSSLER, Joe D. (Democrat) Representative from the 1st District of Douglas and Okanogan Counties will be serving his second term. Born in Alvin, Texas in 1902. He is a graduate of a junior college and is an orchardist. Member Masons, Elks, Moose, Eagles and Kiwanis. He and his wife Pearl have a daughter.



HAWLEY, Dwight S. (Republican) Representative from the 44th District of King County served in the 1950 Ex. Sess. by Appointment. Is now serving his sixth term. Born in Ballard near Seattle in 1896. Attended the University of Washington and is an owner and operator of Insurance and Real Estate Agencies. Purple Heart veteran of the 1st World War. Member Elks, Eagles, Legion, VFW, Kiwanis, YMCA, Seattle and Ballard Chamber of Commerce, Second Division Association and Sunset Hill Community Club. He and his wife Dorothy have three sons.

HODD, Jack C. (Republican) Representative from the 41st District of Whatcom County will be serving his fourth term. Born in Ferndale in 1919. Attended the public schools of Ferndale and Whitman College and is a banker. In the Navy during World War II. Member the Elks and Phi Delta Theta. He and his wife Suzanne have three children.



HUMISTON, Homer (Republican) Representative from the 26th District of Pierce County will be serving his first term. Born in Chicago in 1903. Graduate of University of Illinois and Harvard Medical School. He is a Physician and Medical Director of Pierce County Medical Bureau. Served as Major in Medical Corps during World War II. Member of the Elks. He and his wife Katharine have three children.

Representatives



HUNTLEY, Elmer C. (Republican) Representative from the 9th District of Whitman County will be serving his fifth term. Born in St. John, Washington in 1915. Graduate of high school and attended Washington State University. He is a farmer raising grain and livestock. Married and his wife's name is Necia.

HURLEY, Mrs. Joseph E. (Democrat) Representative from the 3rd District of Spokane County will be serving her seventh term. Born in Winebago, Minnesota. Has a Bachelor of Arts degree in Education from Holy Names College. She is a teacher and homemaker. Member of the Spokane County Bar Association Auxiliary. She and her husband John E. have four children.



JASTAD, Elmer (Democrat) Representative from the 20th District of Lewis County will be serving his first term. Born in Chehalis in 1906. Graduate from the School of Pharmacy, Washington State University and is a Pharmacist. Member Shrine, Scottish Rite, Eagles, Elks, Masons and Moose. He and his wife Edna Mae have a son.

JOHNSON, Doris J. (Democrat) Representative from the 16th District of Benton and Franklin Counties will be serving her first term. She was born in Washington State. Graduate of Western Washington State College with Master's degree and she is a teacher. Member AAUW, Delta Kappa Gamma Society (Psi Chapter), Kennewick-Riverview, Washington and National Education Associations. She and her husband Harold W. have a daughter.



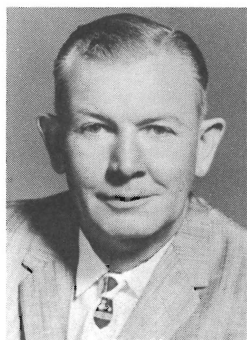
Representatives

JOHNSTON, Elmer E. (Republican) Representative from the 6th District of Spokane County serving 10th term. Born in Oaksdale in 1898. Graduate of Notre Dame and Georgetown Universities with an LL.B. and LL.M. degrees. Is an attorney. O.P.A. Enforcement Attorney during World War II and veteran of World War I. Member World War Vets, Serah Club, Elks and Knights of Columbus. He and his wife Lillian have two children.



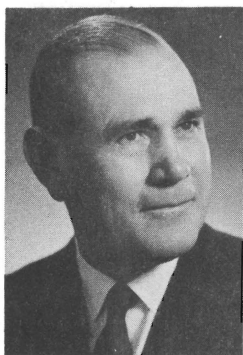
JOLLY, Dan (Democrat) Representative from the 16th District of Benton and Franklin Counties will be serving his second term. Born in Leahy, Washington in 1907. He has a high school education and is a farmer. Member of the Washington State Grange. Is married and he and his wife Harriet have three daughters.

JUELING, Helmut L. (Republican) Representative from the 29th District of Pierce County will be serving his third term. Born in Loup City, Nebraska in 1913. Graduated from the University of Puget Sound with B.A. degree. Owner of a laundry and linen supply business. He and his wife Ruth have two daughters.



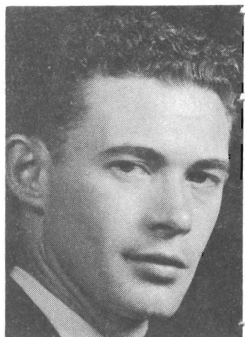
KALICH, Hugh (Democrat) Representative from the 20th District of Lewis County will be serving his first term. Born in Windom near Toledo, Wash. in 1921. Has a high school education and is working as a logger. Served three years in the Army Infantry during World War II. Member Eagles, Elks, Moose, VFW, American Legion and Lions. He and his wife Mildred have two sons.

Representatives



KING, Chet (Democrat) Representative from the 19th District of Grays Harbor part and Pacific County. Serving his 11th term. Born in Doty, Washington in 1901. High school graduate and is employed as a boomman. Served three years in the U. S. Navy. Member Eagles, Elks, Grange and International Woodworkers and Fishermens Unions. He and his wife Ella Mae have three daughters.

KING, Richard "Dick" (Democrat) Representative from the 38th District of Island and Snohomish Counties will be serving his first term. Born in Ritzville in 1934. Graduate of the University of Washington with B.A. & M.A. degrees and is a college teacher and debate coach. Member Acacia Fraternity and the following honoraries: Delta Sigma Rho and Phi Rho Pi. He and his wife Mary Evelyn have three children.



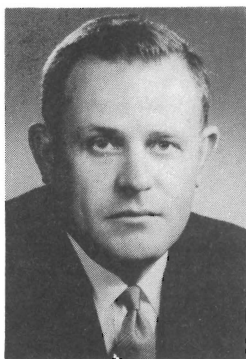
KINK, Dick J. (Democrat) Representative from the 42nd District of Whatcom County will be serving his fifth term. Born in Bellingham in 1921. Attended Western Washington State College and is a captain, commercial fisherman and fish buyer for Alaska Packers Association. In the Navy during World War II. Member VFW, American Legion, Knights of Columbus, member and on the board of directors of Purse Seine Vessel Owners Marketing Association. He is a widower and has a daughter.

KIRK, Gladys (Republican) Representative from the 36th District of King County will be serving her fourth term. She was born in Colorado. Graduate of high school and business college. She is a homemaker. Member Business and Professional Women, American Legion Auxiliary, Past Presidents Assembly and on the Governor's Council on aging. She and her husband Douglas G. Kirk have two sons.



Representatives

KLEIN, William C. (Democrat) Representative from the 49th District of Clark County will be serving his fourth term. Born in Oak Park, Illinois in 1921. Attended Washington State University and is a graduate of the University of Washington School of Law and is a lawyer. Served as an Asst. Atty. General; City Atty. and member of Washington Tax Advisory Council. Served in the Army. Member Elks, Sigma Alpha Epsilon and Delta Theta Phi and Past Pres. of the Clark Co. Bar Assn. He and his wife Phyllis have two children.



KULL, Robert R. (Democrat) Representative from the 14th District of Yakima County will be serving his first term. Born in Curtis, Nebraska in 1918. Received a B.A. in journalism, University of Colorado, cum laude. He is a radio farm director and writer. Served as a warrant officer in the U.S. Navy. Member of the Elks. He is married and his wife's name is Bernita.

LELAND, Alfred E. (Republican) Representative from the 48th District of King County will be serving his fifth term. Born in St. Marie, Idaho in 1921. Took some special courses at University of Washington and graduate of Boeing School of Aeronautics in Oakland, California. Was on Kirkland City Council for one year and served as Mayor of Kirkland six years. In real estate sales, Ocean Shores, Wash. Served in U.S. Army Air Force. Member Elks, Sons of Norway, Chamber of Commerce, Washington State Good Roads Association. Unmarried.



LITCHMAN, Mark (Democrat) Representative from the 45th District of King County will be serving his sixth term. Born in Seattle in 1925. Graduate of the University of Washington with B.A. and LL.B. degrees and is an attorney. Naval officer during World War II and 13th District Legal Reserve. Member Kiwanis, Elks, State Bar Association, American Legion, DAV, Jewish War Veterans and PTA. He and his wife Claire have three children.

Representatives



LUX, Mary Stuart (Democrat) Representative from the 22nd District of Thurston County will be serving her first term. She was born in Utica, New York. Earned her B.A. from William Smith College, RN from Johns Hopkins and M.S. from Cornell University. Served in the Army Nurse Corps. She and her husband Dr. James J. Lux have five children.

LYNCH, Marjorie (Republican) Representative from the 14th District of Yakima County will be serving her second term. She was born in London, England where she received her education. She is a homemaker. She served in the Woman's Auxiliary Air Force (Royal Air Force) and the American Red Cross. Member business and Professional Women, Zonta and League of Women Voters. She is married to E. Donald Lynch and they have three daughters.



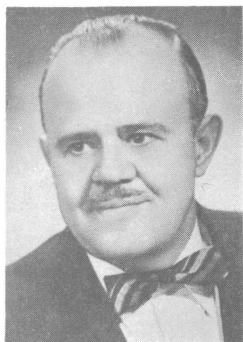
MAHAFFEY, Audley F. (Republican) Representative from the 46th District of King County will be serving his sixth term. Born in Pawnee, Oklahoma in 1899. Graduate of the University of Washington and is an educator. Served in the Navy during World War I. Member of the Masons. He and his wife Frances have three sons.

MARSH, Daniel G. (Democrat) Representative from the 49th District of Clark County will be serving his first term. Born in Salem, Oregon in 1937. Has B.A. from Willamette University and LL.B. from University of Oregon and is an attorney. Served eight years in the National Guard. Member Sigma Alpha Epsilon, Tau Kappa Alpha, Pi Gamma Mu, Phi Alpha Delta, Elks and the Grange. He is unmarried.



Representatives

MARZANO, Frank G. (Democrat) Representative from the 27th District of Pierce County will be serving his first term. Born in Tacoma in 1922. Graduate of high school and is a driver salesman. Has served in the Army and Coast Guard. Member of Amvets Life Post #5, Tacoma Lodge #1740, Bellarmine Boosters and Christopher Columbus Society. He and his wife Angel have four children.



MAST, Fred R. (Republican) Representative from the 35th District of King County will be serving his fifth term. Born in Superior, Wisconsin in 1898. Attended the University of Washington. Owner Mast's Television & Appliance Stores. He served in World War I and II. Member Eagles, Elks, Masons, Heros of 76, Shrine, DAV, American Legion Sojourners, Military Order of World Wars and Washington State Sportsmen's Council. He and his wife Marnie have four children.

MAY, William J. S. "Bill" (Democrat) Representative from the 3rd District of Spokane County serving his third term. Born in England in 1902. High school graduate and took special courses in advertising and electronics. Executive Secretary of the Spokane Labor Council. Member of the Elks Club. He and his wife Pearl have three children.



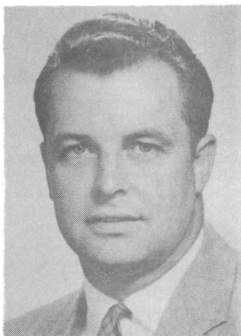
McCAFFREE, Mary Ellen (Republican) Representative from the 32nd District of King County will be serving her second term. Was born in El Dorado, Kansas. She received a B.A. degree from Kansas State University and is a homemaker. She and her husband Kenneth have five children.

Representatives



MCCORMICK, W. L. "Bill" (Democrat) Representative from the 5th District of Spokane County will be serving his fifth term. Born in Waukon, Iowa in 1925. High school graduate. Industrial Relations Consultant for Columbia Lighting. Served in the Air Force during World War II. Member Eagles, International Footprint Assn., American Legion and the Grange. He and his wife Jeri have two daughters.

MCDUGALL, Bob (Republican) Representative from the 12th District of Chelan County will be serving his third term. Born in Cashmere in 1924. Graduate of Wenatchee Valley College and Washington State University and is a fruit grower and warehouse manager. In the Navy during World War II. Member Elks, Masons, American Legion and Grange. He and his wife Jackie have three children.



MOON, Charles (Democrat) Representative from the 39th District of Island and Snohomish Counties will be serving his second term. Born in Sheridan, Wyoming in 1923. B.S. and D.V.M. from the Washington State University and is a Veterinarian. Served in the Army. He and his wife Ellen have three sons.

MOOS, Donald W. (Republican) Representative from the 8th District of Adams, Ferry and Lincoln Counties will be serving his fourth term. Born in Spokane in 1923. Graduate of Washington State University and attended City College of New York. He is a farmer. Was in the Infantry during World War II. Member Masons, Shrine, Lions, Lambda Chi Alpha and the Grange. He and his wife Parmalee have two children.



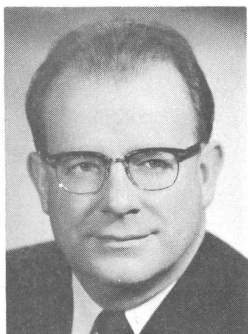
Representatives

MORPHIS, Richard W. (Republican) Representative from the 7th District of Spokane County will be serving his fifth term. Born in Spokane in 1929. Has a B.A. degree from Walla Walla College and is manager of the Spokane Sanitarium. Member Spokane Central Lions, Odd Fellows and Masonic Bodies. He and his wife Violet have a son.



NEWHOUSE, Irving (Republican) Representative from the 15th District of Yakima County will be serving his first term. Born in Mabton in 1920. Graduate of Washington State University with B.S. degree in Agriculture. He is a farmer and cattle feeder. Was a Lieutenant Junior Grade in the Navy during World War II. He and his wife Ruth have six children.

NEWSCHWANDER, Charles E. (Republican) Representative from the 29th District of Pierce County will be serving his third term. Born in 1920 in Tacoma. Attended University of Puget Sound, graduated from University of Oregon Dental School and is a dentist. In Navy during World War II and Korean Conflict. Member Lions Club and Masons. He and his wife Emma have four children.



O'BRIEN, John L. (Democrat) Representative from the 33rd District of King County will be serving his eleventh term. Was speaker of the House from 1955 through 1961. Born in Seattle in 1911. Graduate of business college and attended Western Institute of Professional Accounting and is a Certified Public Accountant. Served in the Coast Guard and Temporary Reserve. Member Eagles, Knights of Columbus, Washington Athletic Club, and Rainier Business Men's Club. He and his wife Mary have five children.

Representatives



O' DELL, Robert W. (Republican) Representative from the 17th District of Klickitat, Skamania and part of Clark County will be serving his first term. Born in Camas in 1924. Has a B.A. degree from Whitman College and graduated from Willamette College of Law. He is an attorney. Member Lions and Phi Delta Theta Fraternity. He and his wife Jeanne have three children.

O'DONNELL, Miss Ann Teresa (Democrat) Representative from the 37th District of King County. Was appointed in 1959 and will be serving her fourth term. She was born in Helena, Montana. Graduate of Seattle University and attended University of Washington Law School for one year. In public relations. Member Capitol Hill Commercial Club, Urban League, Totem Chapter of Business and Professional Women and on King County Democratic Executive Board. Unmarried.



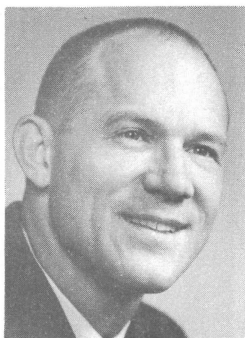
OLSEN, Ray (Democrat) Representative from the 35th District of King County will be serving his eighth term. Born in Baker, Oregon in 1904. Graduate of high school and business college and is Budget Director for King County Commissioners of the 2nd District. Member Elks, Eagles, Washington Athletic Club, Swedish Club and member of the Seattle Civic Center Commission. Married and his wife's name is Ellen.

PERRY, Robert A. (Democrat) Representative from the 45th District of King County will be serving his fourth term. Born in New York in 1921. Graduate of high school and USMS School of Engineering. Officer in the Merchant Marines during World War II and Korean Conflict. He and his wife Nancy have three daughters and a son.



Representatives

PIERRE, George (Democrat) Representative from the 34th District of King County will be serving his first term. Born in Chesaw, Washington in 1926. Graduate of Chaffey College, Loyola University and University of Southern California and studied pre-law at the University of Washington. Since 1950 he has worked as a professional writer. Member DAV, VFW, Marine Corps League, American Legion, Knights of Columbus and a Scout leader. In 1963, installed as Chief of the Colville Confederated Tribes. He is unmarried.



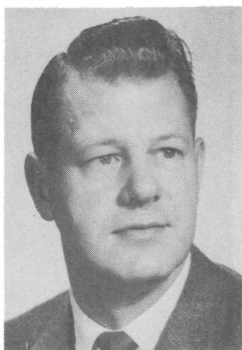
PRITCHARD, Joel M. (Republican) Representative from the 36th District of King County will be serving his fourth term. Born in Seattle in 1925. Attended Marietta College in Ohio and is now manager of the Griffin Envelope Company. In the Infantry during World War II. He and his wife Joan have four children.

RADCLIFFE, W.O.E. (Bill) (Democrat) Representative from the 42nd District of Whatcom County will be serving his first term. Born in Goldendale in 1902. Has a B.A. degree from Western Washington State College and Masters from University of Washington. He is principal of Shuksan Junior High. Member Masons, the Order of Eastern Star and Phi Delta Kappa. He and his wife Francelia have two children.



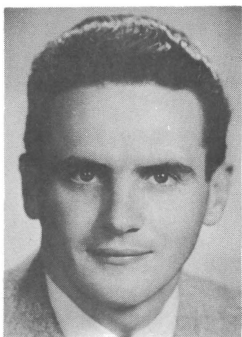
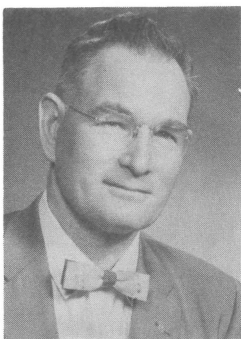
ROGERS, Jack (Democrat) Representative from the 23rd District of Kitsap County served three terms in the Senate and this will be his second term in the House. Born in Utah in 1915. He attended the University of Washington for two years and now owns a weekly newspaper and commercial printing plant. Member Elks and Lions. He and his wife Dorothy have two daughters.

Representatives



SALING, Gerald L. (Republican) Representative from the 5th District of Spokane County will be serving his first term. Born in Spokane in 1928. Has a B.A. and Master's degree and is an educator. Principal of Roosevelt Elementary School in Spokane. In Navy during World War II. Member Masons, Phi Delta Kappa and served in Sierra Leone, West Africa in summer of 1963 for U.S.A.I.D. He and his wife Dee have two children.

SAVAGE, Charles R. (Democrat) Representative from the 24th District of Clallam, Jefferson and Mason Counties will be serving his eighth term. Served one term in the United States Congress. Born in La Farge, Wisconsin in 1906. Graduate of high school and has taken some special training. He is a logger. He and his wife Helen have two children.



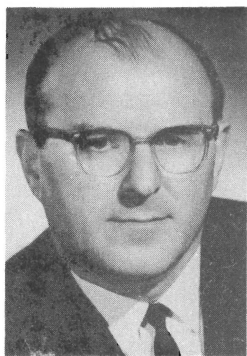
SAWYER, Leonard A. (Democrat) Representative from the 25th District of Pierce County will be serving his sixth term. Born in Puyallup in 1925. Graduate of University of Puget Sound and University of Washington Law School. He is an attorney. Served in the Navy during World War II. Member Elks, American Legion and VFW. He and his wife Beverly have four daughters.

SCHAEFER, Robert (Bob) (Democrat) Representative from the 49th District of Clark County will be serving his fourth term. He is Speaker of the House elect for 1965. Born in Seattle in 1930. Graduate of Willamette University Law School and is an attorney. Served in the Army and reserves for seven years. Member Elks, Grange, Kiwanis and Phi Delta Phi and Phi Delta Theta. He and his wife Sally have three children.



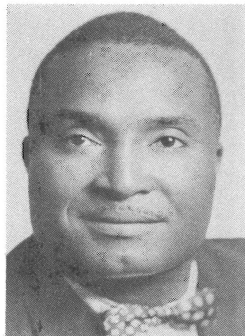
Representatives

SHERIDAN, George P. (Democrat) Representative from the 27th District of Pierce County will be serving his first term. Born in Marietta, Wash. in 1914. Attended business college and is engaged in public relations work. Member American Legion; Director, Tacoma Athletic Commission and Sportsmen's Club. He is a widower with four children.



SLAGLE, Frank (Democrat) Representative from the 2nd District of Pend Oreille and Stevens Counties will be serving his first term. Born in Kettle Falls in 1921. Graduate of Washington State University with B.S. degree in Pharmacy and is a self employed druggist. Served three years in the Army Air Force during World War II. Member of the Elks. He and his wife Elizabeth have three children.

SMITH, Sam (Democrat) Representative from the 37th District of King County will be serving his fourth term. Born in Gibsland, Louisiana in 1922. Has a B.S. degree from Seattle University and B. A. from the University of Wash. Has done some graduate studies in Economics and Political Science at U. of W. He is an expeditor for Boeing Airplane Company. Warrant officer during World War II. Member Phi Beta Sigma Fraternity and VFW. He and his wife Marion have six children.



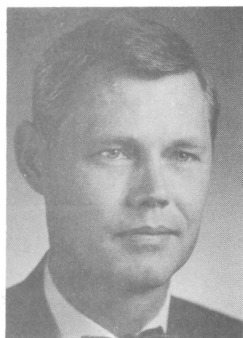
SWAYZE, Frances G. (Republican) Representative from the 26th District of Pierce County will be serving her seventh term. Born in Council Bluffs, Iowa. Graduate of the University of Puget Sound and is now serving as Research Assistant for the University. Member Pi Beta Phi Sorority, PEO Sisterhood, League of Women Voters, AAUW and Business & Professional Women. She is the widow of Thomas A. Swayze and has five children.

Representatives



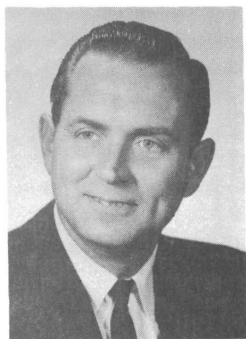
TAPLIN, Ben F. (Democrat) Representative from the 10th District of Asotin, Columbia and Garfield Counties will be serving his first term. Born in Wausau, Wisconsin in 1896. He is retired. Member Elks Lodge No. 896, Lewiston, Ida., Veterans of World War I, Hells Canyon Barracks No. 224, Clarkston. He is married to Elizabeth A. Taplin and they have no children.

TAYLOR, Richard "Dick" (Democrat) Representative from the 38th District of Island and Snohomish Counties. Serving his third term. Born in Everett in 1918. Graduate of St. Martin's College and Stanford University. He runs a sporting goods store. Member of the Everett Elks Club. He and his wife Irene have three children.



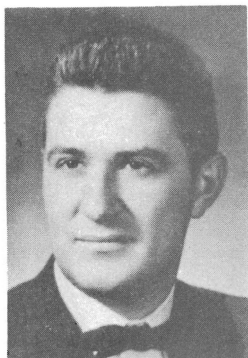
THOMPSON, Alan (Democrat) Representative from the 18th District of Cowlitz and Wahkiakum Counties will be serving his first term. Born in Geneva, Iowa in 1927. Attended University of Nebraska and University of California and has a B.A. degree. He is a publisher of weekly newspapers the Cowlitz County Advocate and The Wahkiakum County Eagle. Served in the Navy. Member Elks and Beta Theta Pi. He and his wife Barbara have three sons.

TRAYLOR, W. S. "Bill" (Democrat) Representative from the 24th District of Clallam, Jefferson and Mason Counties will be serving his first term. Born in Norfolk, Virginia in 1926. Attended William and Mary College and owns a restaurant. Served four years in the Coast Guard during World War II and one year during Korean Conflict. Member Elks, American Legion, VFW and Masons. He and his wife Shirley have two daughters.



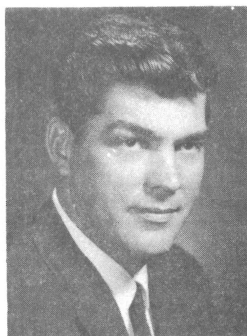
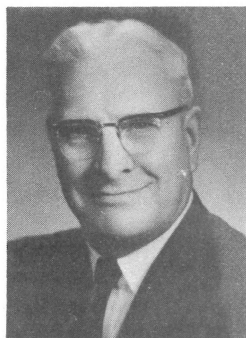
Representatives

UHLMAN, Wesley C. (Democrat) Representative from the 32nd District of King County will be serving his fourth term. Born in Cashmere in 1935. Attended Seattle Pacific College and graduated from University of Washington Law School. He is a lawyer. Captain, Washington State National Guard for 11 years. Member North Central Kiwanis, Theta Delta Chi, Pi Sigma Alpha and Phi Alpha Delta Fraternities. He and his wife Laila have two sons.



VALLE, Georgette (Democrat) Representative from the 31st District of King County will be serving her first term. Born in Blue Earth, Minnesota. Graduate of Waldorf Lutheran College, Forest City, Iowa & University of Minnesota with B.S. in Occupational Therapy. She is a homemaker. Member Highline League of Women Voters. Seattle Lady Lions and Secretary of Seattle World Affairs Council. She and her husband Dr. Odd Valle have two children.

WANG, Arnold S. (Republican) Representative from the 23rd District of Kitsap County will be serving his seventh term. Born in Chicago in 1900. Graduate of high school and has taken courses in real estate law. He is in real estate business and an investment broker. Member Elks, Eagles, Lions, Son's of Norway, Salvation Army Board and Washington Athletic Club. He and his wife Myrtle have three children.



WARNKE, Frank J. (Democrat) Representative from the 30th District of King County will be serving his first term. Born in Havre, Montana in 1933. Attended Central Washington College of Education and one and one-half years at the University of Washington studying political science. He is a Public Affairs Consultant. In Coast Guard for three years. Member Kiwanis and Junior Chamber of Commerce.

Representatives



WHETZEL, Jonathan (Republican) Representative from the 43rd District of King County will be serving his first term. Born Pittsburgh, Pennsylvania in 1927. B.A. from Princeton, 1949, cum laude and LL.B. from Harvard Law School. Lawyer and general manager of real estate and investment firm. Served in the Navy during World War II. Unmarried.

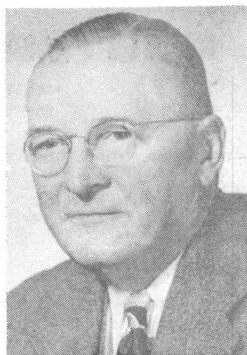
WITHERBEE, C. G. (Democrat) Representative from the 31st District of King County will be serving his fourth term. Born in Frazer, Montana in 1922. High school graduate and is Executive Vice President of Seahurst Investment Company. Member Masonic Lodge, Elks, PTA, Machinist's Union Local 751 and Highline YMCA. He and his wife Mary have six children.



WOLF, Harold E. "Hal" (Republican) Representative from the 22nd District of Thurston County will be serving his first term. Born in Yelm in 1926. Graduated from the University of Puget Sound with B.A. degree. He is a grocer. Served in the Navy during World War II. Member Lions, Elks, Moose and Masonic Lodge. He and his wife Peggy have three children.

Representatives

HOLCOMB, S. R. "Si" (Democrat) Chief Clerk of the House of Representatives from the 48th District of King County. Has served as Chief Clerk for thirty years. Born in Ritzville in 1895. High school graduate and attended the University of Washington for two years. Is a real estate broker. Served two years in World War I. Member of the Elks and is a Past Commander of the American Legion. He and his wife Helen have three children.



HYPPA, Elmer A. (Sergeant-at-Arms) (Democrat) from the 25th District of Pierce County has served two regular and two special sessions in the House. Will be serving his 5th term as Sergeant-at-Arms in the House. Born in Wilkeson in 1919. High school graduate and is a dairy farmer. Served three years in Seabees in South Pacific during World War II. Member Masons, Grange, Elks, VFW, Kiwanis and Past State Pres. of the Fraternal Order of Eagles. He and his wife Saima have three children.

ROSTER OF MEMBERS

LEGISLATIVE DISTRICT ROSTER OF MEMBERS
GROUPED AS TO DISTRICTS REPRESENTED

DIST.	COUNTIES	STATE SENATORS	STATE REPRESENTATIVES
1	Douglas, Okanogan	Hallauer (D)	Bozarth (D), Haussler, (D)
2	Pend Oreille, Stevens	McMillan (D)	Avey (D), Slagle (D)
3	Spokane, part	Keefe (D)	Hurley (D), May (D)
4	Spokane, part	Herrmann (D)	Day (D), Epton (D)
5	Spokane, part	Cooney (D)	McCormick (D), Saling (R)
6	Spokane, part	Guess, (R)	Adams (R), Johnston (R)
7	Spokane, part	Cowen (D)	Harris (R), Morphis (R)
8	Lincoln, Adams, Ferry	Raugust (R)	Moos (R)
9	Whitman	Neill (R)	Goldsworthy (R), Huntley (R)
10	Columbia, Asotin, Garfield	Donohue (D)	Taplin (D)
11	Walla Walla	Freise (R)	Ahlquist (R), Copeland (R)
12	Chelan	Hanna (D)	Braun (D), McDougall (R)
13	Grant, Kittitas	Washington (D)	Flanagan (R), Bledsoe (R)
14	Yakima, part	Redmon (R)	Lynch (R), Brachtenbach (R), Kull (D)
15	Yakima, part	Woodall (R)	Canfield (R), Newhouse (R)
16	Benton, Franklin	McCormack (D)	Jolly (D), Johnson (D)
17	(Skamania, Klickitat, Clark, part	Henry (D)	O'Dell (R)
18	Cowlitz, Wahkiakum	Talley (D)	DeJarnatt (D), Thompson (D)
19	Grays Harbor, Part, Pacific	Bailey (D)	King (D)
20	Lewis	Chytill (R)	Jastad (D), Kalich (D)
21	(Grays Harbor, except 19 precincts	Charette (D)	Anderson (D), Burtch (D)
22	Thurston	Lewis (R)	Lux (D), Wolf (R)
23	Kitsap	Morgan (D)	Bock (D), Rogers (D), Wang (R)
24	Clallam, Mason, Jefferson	Sandison (D)	Conner (D), Savage (D), Traylor (D)
25	Pierce, part	Knoblauch (D)	Brouillet (D), Sawyer (D)
26	Pierce, part	Petrich (D)	Swayze (R), Humiston (R)
27	Pierce, part	Kupka (D)	Marzano (D), Sheridan (D)
28	Pierce, part	Rasmussen (D)	Gallagher (D), Bottiger (D)
29	Pierce, part	McCutcheon (D)	Jueling (R), Newschwander (R)
30	King, part	Stender (R)	Cunningham (R), Warmke (D)
31	King, part	Herr (D)	Wetherbee (D), Angevine (D), Valle (D)
32	King, part	England (R)	Uhlman (D), McCaffree (R)
33	King, part	Connor (D)	O'Brien (D), Chataias (D)
34	King, part	Greive (D)	Elder (D), Pierre (D)
35	King, part	Riley (D)	Olsen (D), Mast (R)
36	King, part	Moriarty (R)	Kirk (R), Pritchard (R)
37	King, part	Dore (D)	O'Donnell (D), Smith (D)
38	Island, part; Snohomish, part	Mardesich (D)	Dootson (D), Taylor (D), King (D)
39	Island, part; Snohomish, part	Gissberg (D)	Backstrom (D), Moon (D)
40	San Juan, Skagit	Peterson (D)	Berentson (R), Eldridge (R)
41	Whatcom, part	Lennart (R)	Hood (R)
42	Whatcom, part	Atwood (R)	Kink (D), Radcliffe (D)
43	King, part	Williams (R)	Clark (R), Whetzel (R)
44	King, part	Peterson (R)	Bergh (D), Hawley (R)
45	King, part	Gallagher (D)	Litchman (D), Perry (D)
46	King, part	Ryder (R)	Gorton (R), Mahaffey (R)
47	King, part	Durkan (D)	Garrett (D), Grant (D)
48	King, part	Thompson (R)	Andersen (R), Leland (R)
49	Clark, part	Foley (D)	Klein (D), Schaefer (D) Marsh (D)

SUMMARY

SENATE	MEMBERS	HOUSE	MEMBERS
Democrats.....	32	Democrats.....	60
Republicans.....	17	Republicans.....	39
TOTAL.....	49	TOTAL.....	99

~ PRESS RADIO AND TELEVISION ~

ALEXANDER, EDWIN J., Olympia News

ALTSCHULL, HERB, King Radio & TV

BARRETT, ELDON, United Press International

BERGSMAN, JERRY, Yakima Herald & Republic

BURT, LYLE, Seattle Times

CARTER, BILL, KGY Radio

CONANT, MIKE, Daily Olympian

CONRAD, PAUL, Allied Daily Newspaper of
Washington

COUR, ROBERT, Seattle Post-Intelligencer

CRAIG, KEITH, KIRO-TV

CUMMINGS, ROBERT C., Tacoma News Tribune &
Associated Press

CUNNINGHAM, ROSS, Seattle Times

FERGUSON, ADELE, Bremerton Sun

FISCHER, JACK, Spokane Spokesman-Review

GAGNIER, ROBERT, KVI Radio

HERRING, CHARLES, KING-TV

HITTLE, LEROY M., The Associated Press

HOPPER, BETTY, The Associated Press

KELLEY, JOHN L., KTNT-TV

KEMPSTER, NORMAN, United Press International

KOENNINGER, TOM, Centralia Daily Chronicle
~ ~ ~ ~ ~

ASSOCIATED PRESS - Ground Floor, Phone 5098

TACOMA NEWS TRIBUNE - Ground Floor,
Phone 352 - 0212

UNITED PRESS INTERNATIONAL - Ground Floor,
Phone 6534

WASHINGTON STATE RADIO-TV NEWS BUREAU,
Ground Floor, Phone 6814
(Over)

~ PRESS RADIO AND TELEVISION ~

KOMEN, JOHN, KOMO-TV

KING, PAUL M., Longview Daily News

LAWRENCE, RICHARD S., The Daily Olympian

LEMON, JOHN, Spokane Chronicle

LOCKMAN, MARSHALL, KOMO-TV

MURPHY, JAMES, Washington State Association
of Broadcasters

OLSEN, TOM, KGY Radio & Radio-TV News Bureau

PYLE, JACK, Tacoma News Tribune and KTNT-TV

RIGERT, JOE, The Associated Press

ROBISON, BILL, KIRO-TV

ROBINSON, DAVE, Radio-TV News Bureau

ROBINSON, HERB, KOMO-TV

SCHULMAN, BOB, KING-TV

SCHULTZ, GORDON, United Press International

SHARKEY, SAM, KIRO-TV

SMITH, LEE, The Associated Press

SPENCER, JACK, KIRO-TV

STRICK, STANLEY, United Press International

STURHOLM, PHIL, KING-TV

TOLLEFSON, GENE, KIMA-TV

WHITMAN, DONALD F., KITN-KITI Radio

~ ~ ~ ~ ~

ASSOCIATED PRESS - Ground Floor, Phone 5098

TACOMA NEWS TRIBUNE - Ground Floor,

Phone 352 - 0212

UNITED PRESS INTERNATIONAL - Ground Floor,

Phone 6534

WASHINGTON STATE RADIO-TV NEWS BUREAU,

Ground Floor, Phone 6814