

Washington State Broadband Office

State Broadband Update for JTC

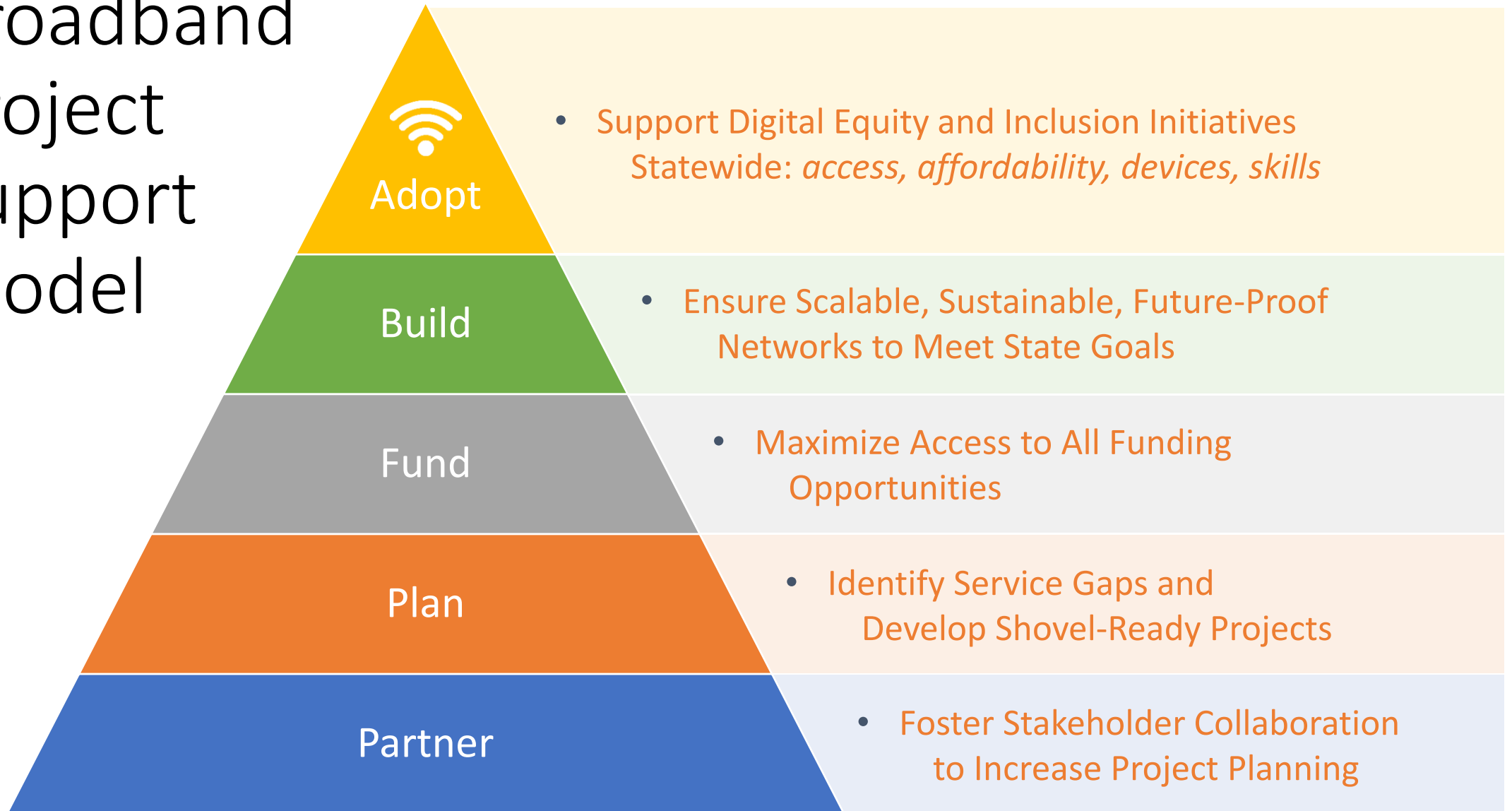
WASHINGTON STATE BROADBAND OFFICE

OCTOBER 20, 2021



Washington State
Department of
Commerce

Broadband Project Support Model

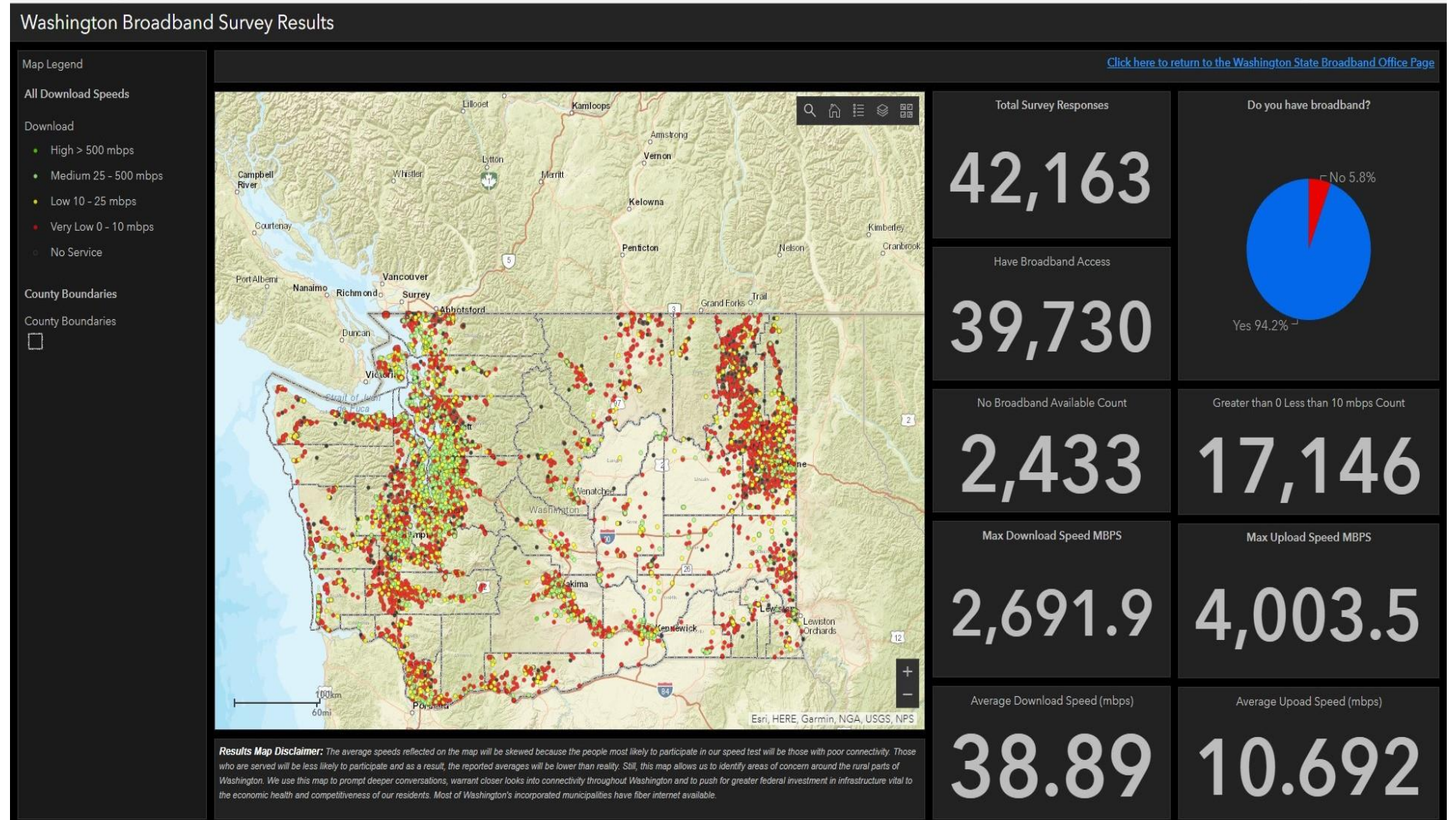


State Broadband Access and Speed Survey Tool

Found at: broadband.wa.gov

The map data gathered through the survey will provide validated information for use by any community for broadband expansion projects and support pursuit of a grant funding available from the Federal Communications Commission (FCC), US Department of Agriculture (USDA) and state programs such as Public Works Board and Community Economic Revitalization Board (CERB) broadband financing.

Key partners with the State Broadband Office include mapping technology partner GEO Partners, LLC, Washington State Department of Commerce Information Services, Washington State University Extension, Washington State Library division of the Office of the Secretary of State, and the Office of the Superintendent of Public Instruction (OSPI)





Plan Identify Service Gaps and Develop Shovel-Ready Projects

Broadband State and County Dashboards

Download

• No Service	5.9%
• 0-10 Mbps	39.8%
• 10-25 Mbps	18.6%
• 25-150 Mbps	29.7%
• 150+ Mbps	6.0%

Upload

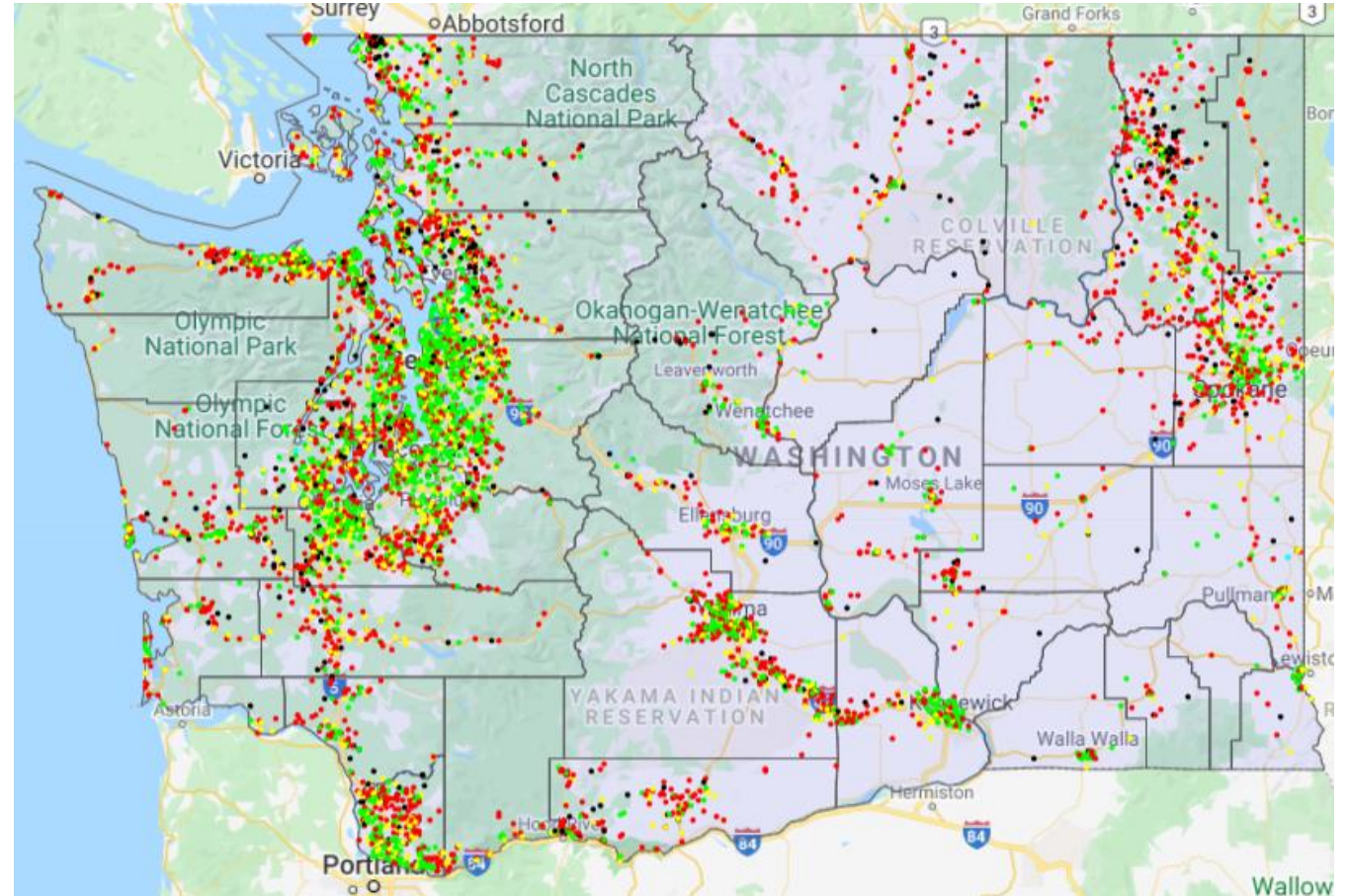
No Service	5.9%
<3 Mbps	42.3%
3-10 Mbps	30.1%
10-25 Mbps	15.7%
25-150 Mbps	5.1%
> 150 Mbps	0.9%

Households	2,885,677
Population	6,724,540
Test locations	38,271
Total Tests	50,095

Reasons for No Service

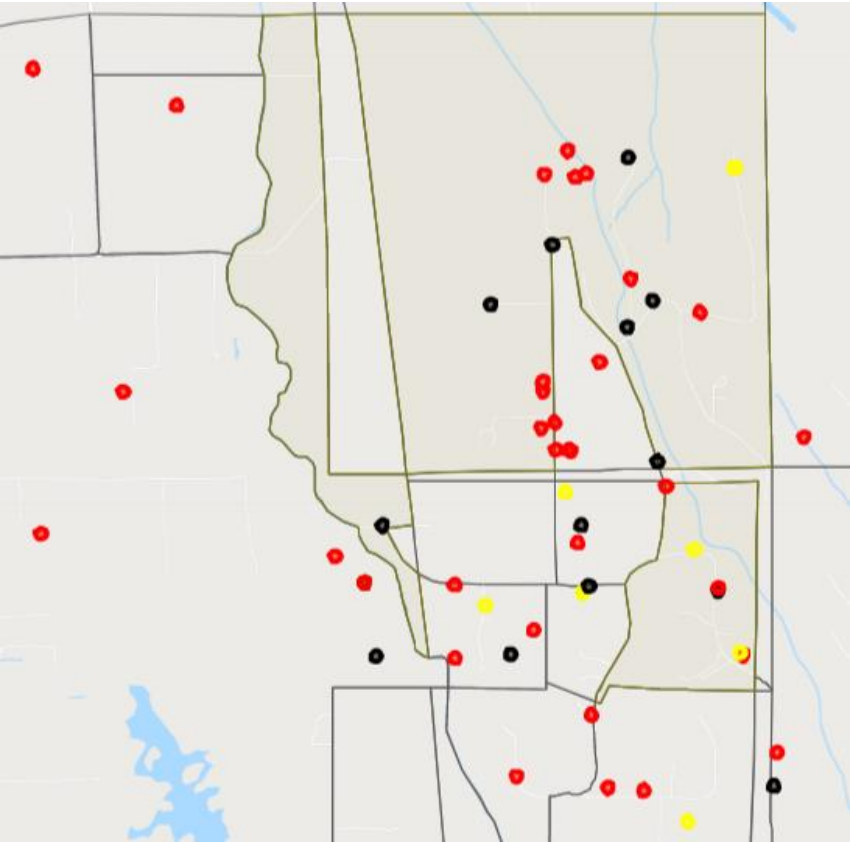
Respondents can select all that apply

Too Expensive	16.96%
Not Available	91.17%
Use Public	0.15%
No Computer	1.61%
Don't Know How Internet	1.53%
Don't Know How Computer	0.46%
Don't Need	0.23%
Privacy	0.15%
Physical Issues	0.08%

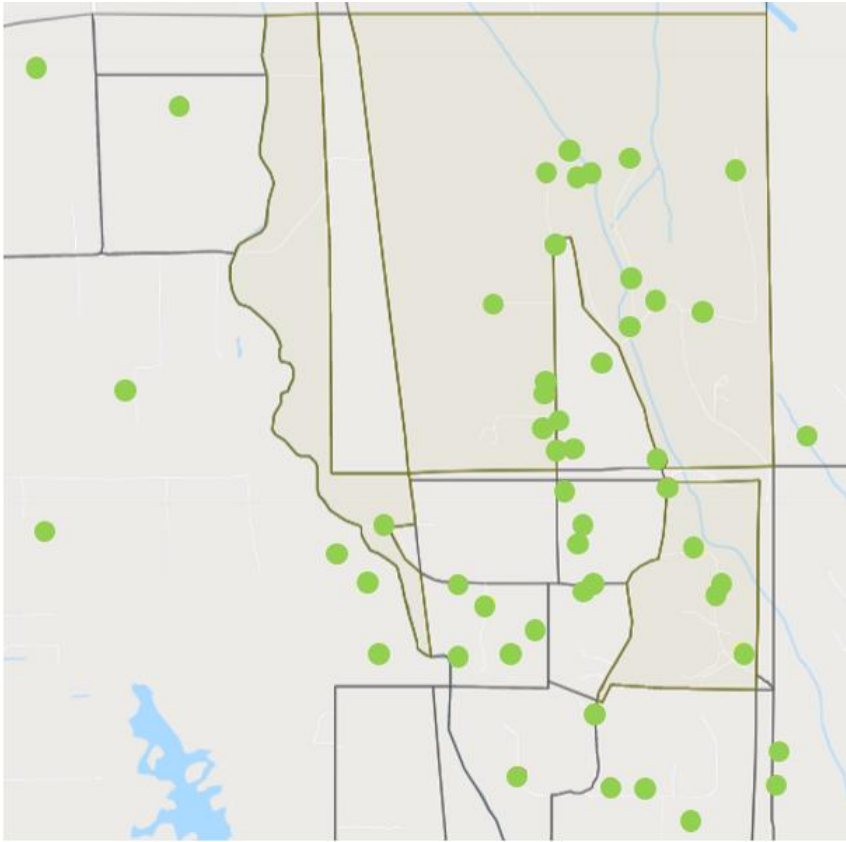
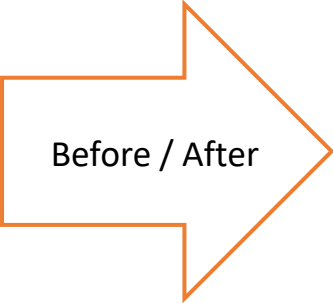


How Do We Measure Success?

Partnership between Broadband Office & Comcast at Frontier Airpark in Lake Stevens, Snohomish County



2020: Black - No Service Red < 10 Mbps Yellow < 25 Mbps



2024: Green > 25 Mbps Scalable to 2028: 150/150 Mbps

Broadband Study Context

- Utility access to state highway right-of-way:
 - ✓ Generally restricted under prior law
 - ✓ Required WSDOT variance – variances granted, but process is cumbersome
- ESHB 1457 removes prohibition with regard to fiber optic infrastructure
 - ✓ Directed WSDOT to increase coordination with the State Broadband Office to collaboratively work towards state goals
 - ✓ Develop a Dig Once policy
 - ✓ Strategically “open” limited access highway rights of way to increased broadband occupancy
 - ✓ Directed JTC study to:
 - Enhance mapping of Broadband coverage
 - Assist WSDOT in developing policies governing permitting decisions and cooperative partnerships with industry
- WSDOT right-of-way permitting on hold pending results of analysis



Washington State
Department of
Commerce

Thank you.

Dawn Eychaner

ACTING DIRECTOR, WASHINGTON STATE BROADBAND OFFICE

Dawn.Eychaner@commerce.wa.gov

360-790-3274

www.commerce.wa.gov

