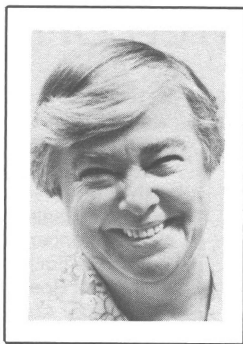


A PICTORIAL GUIDE TO  
THE FORTY-SIXTH SESSION  
OF THE WASHINGTON  
STATE LEGISLATURE  
1979-1981



## Dixy Lee Ray Governor

Inaugurated January 12, 1977

Dixy Lee Ray, 17th governor of Washington State, is also the first woman to be elected to that office.

Born in Tacoma on September 3, 1914, she attended grade school and high school there, then went to Mills College in Oakland for a Bachelor of Arts degree in 1937 and a Master of Arts in 1938. She earned her doctorate in biology in 1945 at Stanford University.

Dr. Ray was a high school teacher in Oakland from 1938 to 1942. She spent years on the faculty of the University of Washington, teaching marine invertebrate zoology, conducting research, and supervising graduate students.

The recipient of 20 honorary degrees from American universities and colleges, Dr. Ray has been active in numerous scientific endeavors in her long career. From 1945 to 1960 she was a member of the Executive Committee of the University of Washington's Friday Harbor laboratories. During the next two years she served as special consultant in biological oceanography to the National Science Foundation.

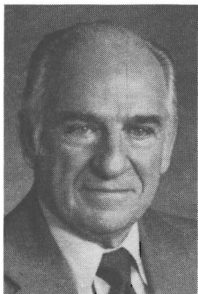
In 1963, Dr. Ray was named the first director of the Pacific Science Center in Seattle, a position she held until she was appointed nearly ten years later to the United States Atomic Energy Commission. Six months later the President named her chairman of the AEC.

When Congress reorganized the AEC and split it into two agencies, President Ford asked her to take a position as Assistant Secretary of State to direct and organize the newly created State Department Bureau of Oceans and International Environmental and Scientific Affairs. She held the position from January to June, 1975, resigning after the new bureau had been organized.

Dr. Ray, whose home is on Fox Island, Washington, has received many national, international and local civic awards. They include a Guggenheim Fellowship; membership in the Danish Royal Society for Natural History; Phi Beta Kappa and Sigma Xi; 1978 National Honoree of Beta Gamma Sigma; the Florence K. Hutchinson Medal for Service in Conservation; Seattle's First Citizen Award; the College Scientists' Foundation's Outstanding Woman of Science Award; named in 1977 as one of Ten Most Influential Women in the Nation by Harper's Bazaar; the Ladies' Home Journal Woman of the Year Award, and recipient of the National Freedom Foundation Award in 1978.

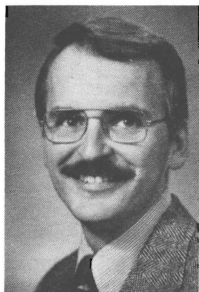


# ELECTED OFFICIALS



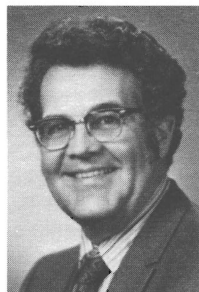
**JOHN A. CHERBERG, Lieutenant Governor. (Democrat)** Presently serving his sixth term. Serves as President of the Senate, ex-officio chairman of Senate Rules Committee, member of State Finance Committee, Capitol Committee, Washington State Patrol Retirement Board, and Chairman of the Data Processing Authority. Formerly, television executive, head football coach, U. of W., and a Seattle high school teacher.

**BRUCE K. CHAPMAN, Secretary of State. (Republican)** Appointed Secretary of State, 1975; elected, 1975; re-elected 1976. Major areas of interest: ethical reform, constitutional reorganization, cost-cutting and efficiency in government, and greater voter participation in election process Member President's Council on Historic Preservation. Former Seattle City Councilmember.



**ROBERT S. O'BRIEN, State Treasurer. (Democrat)** Native of Washington, elected to four consecutive four-year terms as Grant County Treasurer, prior to being elected four times State Treasurer. immediate Past President of National Association of State Auditors, Comptrollers and Treasurers.

**ROBERT V. GRAHAM (BOB), State Auditor. (Democrat)** is a native Washingtonian and became the State's seventh auditor in 1965, currently serving his fourth term. He is a member and twice chairman of the National Council on Governmental Accounting. He and his wife Lloydine, have five children.



# ELECTED OFFICIALS

**SLADE GORTON, Attorney General. (Republican)** Has held this office since 1969; Past President, National Association of Attorneys General. Member, Law and Justice Committee and Criminal Justice Training Commission. Previously served five terms in House of Representatives, one term as majority leader. Active in professional and community groups, and Episcopal Church. He and his wife Sally, have three children.



**DR. FRANK B. BROUILLET, Superintendent of Public Instruction. (Non-partisan Office)** Elected to Office of State Superintendent in 1972. Former member of the House of Representatives, serving eight consecutive terms. A native of Puyallup, where he resides with his wife Marge and their two sons.

**BERT L. COLE, Commissioner of Public Lands. (Democrat)** Serving his sixth term. He administers the Department of Natural Resources, which manages nearly 5 million acres of forest, agricultural and aquatic lands. Born and raised in Western Washington, graduated from Ferndale High School and U. of W. Served in Army Signal Corps. Before election to statewide office was an educator, banker, logger, city councilman and county commissioner. He and his wife, Norma, live in Olympia.



**RICHARD G. (DICK) MARQUARDT, Insurance Commissioner. (Republican)** Raised in Western Washington, former Washington State Senator. Executive in private enterprise and public life. Beth and Dick Marquardt reside in Seattle.

## TABLE OF CONTENTS

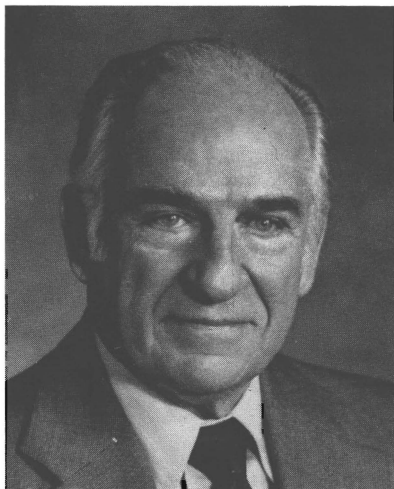
State Elected Officials .....	1
Introduction .....	4
President of Senate .....	5
Senate Roster .....	6
Senate Biographies .....	7
Speakers of the House .....	20-21
House of Representatives Roster .....	22
House of Representatives Biographies .....	24

## INTRODUCTION

This "46th Session Pictorial Directory of the Washington State Legislature" contains pictures of and biographical material on state elected officials and members of the Senate and House of Representatives. This Directory is prepared by the Senate and the House of Representatives to assist those interested in becoming better acquainted with their legislators and the legislative processes in our state.

These are the men and women who have been elected to serve the people both as the heads of our government and as our voice in providing our state with laws which benefit all.

# SENATORS OF THE STATE OF WASHINGTON



**JOHN A. CHERBERG**  
**Lieutenant Governor**  
**President of the Senate**

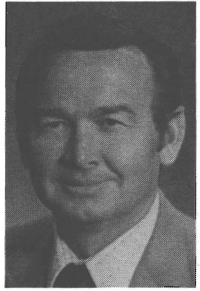
John Andrew Cherberg (Democrat) is serving his twelfth session as President of the Senate and Ex-Officio Chairman of the Senate Rules Committee. He was first elected Lieutenant Governor in 1956, and reelected in 1960, 1964, 1968, 1972 and 1976. Born in 1910 in Pensacola, Florida, he earned a life teaching diploma from the University of Washington in 1934. Formerly a teacher, he was head football coach at the University of Washington prior to his election. He and his wife, Betty, have three children.

# ROSTER OF MEMBERS

WASHINGTON STATE SENATE			49 Members— 30 Democrats, 19 Republicans
NAME	PARTY	DIST.	ADDRESS
BAUSCH, Del	D	22	P. O. Box 1546, Olympia, 98507
BENITZ, Max E.	R	8	Route 2, Box 181, Prosser, 99350
BLUECHEL, Alan	R	45	9901 N.E. 124th Street, #505, Kirkland, 98033
BOTTIGER, R. Ted	D	2	8849 Pacific Avenue, Tacoma, 98444
CLARKE, George W.	R	41	1111 Hoge Building, Seattle, 98104
CONNER, Paul	D	24	Route 4, Box 655, Sequim, 98382
DAY, William S. "Bill"	D	4	2721 E. Sprague, Spokane, 99202
DONOHUE, Hubert F.	D	9	Rt. 2, Box 13, Dayton, 99328
FLEMING, George	D	37	1100 Lake Washington Blvd. So., Seattle, 98144
GALLAGHAN, Art	R	26	3911 55th Street Ct. N.W., Gig Harbor, 98335
GASPARD, Marcus	D	25	8220-191st Ave. E., Sumner, 98390
GOLTZ, H. A. "Barney"	D	42	3003 Vallette Street, Bellingham, 98225
GOULD, Susan E.	R	21	19225 92nd W., Edmonds, 98020
GUESS, Sam C.	R	6	W. 408 33rd Avenue, Spokane, 99203
HANSEN, Frank "Tub"	D	13	Star Route, Box 73, Moses Lake, 98837
HAYNER, Jeannette	R	16	Box 1757, Walla Walla, 99362
HENRY, Al	D	17	Rio Vista, White Salmon, 98672
JONES, John D.	R	48	18 Bridlewood Circle, Kirkland, 98033
KEEFE, James Edward	D	3	412 W. Glass, Spokane, 99205
LEE, Eleanor	R	33	P. O. Box 66274, Burien, 98166
LEWIS, R. H. "Bob"	R	5	3308 Columbia Circle, Spokane, 99205
LYSEN, King	D	31	12864 Shorecrest Dr., S.W., Seattle, 98146
MARSH, Dan	D	49	P. O. Box 5017, Vancouver, 98663
MATSON, Jim	R	14	Rt. 2, Box 2311, Selah, 98942
McDERMOTT, James A.	D	43	1650 22nd Ave. E., Seattle, 98112
MOORE, Ray	D	36	1722 Bigelow North, Seattle, 98109
MORRISON, Sid W.	R	15	Route 1, Box 220 AA, Zillah, 98953
NEWSCHWANDER, Chas. E.	R	28	2140 Bridgeport Way, Tacoma, 98466
NORTH, Lois	R	44	10126 Radford Ave. N.W., Seattle, 98177
ODEGAARD, Gary M.	D	20	3415 Ives Road, Centralia, 98531
PETERSON, Lowell	D	40	Box 249, Concrete, 98237
PULLEN, Kent	R	47	22844 172nd S.E., Kent, 98031
QUIGG, J. T.	R	19	613 North K, Aberdeen, 98520
RASMUSSEN, A. L. "Slim"	D	29	5415 A Street, Tacoma, 98408
RIDDER, Ruthe	D	35	5809 S. Roxbury, Seattle, 98118
SCOTT, George W.	R	46	8821 Paisley Drive N.E., Seattle, 98115
SELLAR, George L.	R	12	1324 Terrace Drive, East Wenatchee, 98801
SHINPOCH, A. N. "Bud"	D	11	361 Maple Ave., N.W., Renton, 98055
TALLEY, Don L.	D	18	4460 Pleasant Hill Road, Kelso, 98626
TALMADGE, Phil	D	34	4006 53rd S.W., Seattle, 98116
VAN HOLLEBEKE, Ray	D	1	18735-53rd N. E., Seattle, 98155
VOGNILD, Larry L.	D	38	1710 32nd St., Everett, 98204
von REICHBAUER, Peter	D	30	427 Public Lands Bldg., Olympia, 98504
WALGREN, Gordon L.	D	23	Five/10 Bldg., 510 Washington, Bremerton, 98310
WANAMAKER, F. "Pat"	R	10	519 West Wanamaker Road, Coupeville, 98239
WILLIAMS, Al	D	32	4801 Fremont North, Seattle, 98103
WILSON, Bruce A.	D	7	P. O. Box F, Omak, 98841
WOJAHN, R. Lorraine	D	27	3592 East K Street, Tacoma, 98404
WOODY, Dianne	D	39	24328-47th, Woodinville, 98072

# SENATORS

**BAUSCH, DEL (Democrat)**, Senator from the 22nd District, Thurston County, is serving his first term in the Senate and has served two terms in the House of Representatives. Born in 1935 in Olympia. He is the manager for Olympia Stevedoring Company. Attended Clark College. He has three sons.



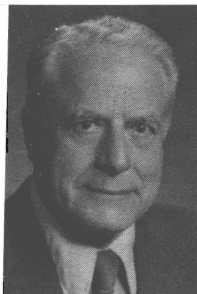
**BENITZ, MAX E. (Republican)** Senator from the 8th District of Benton and Yakima Counties, is serving his third session in the Senate and has served three sessions in the House of Representatives. Born in Wathena, Kansas. He is self-employed in agri-business. Past-president of the Washington State Farm Bureau Federation; past school board member, and former member of the board of directors of the Benton-Franklin County Fair. He and his wife, Marie, have five children.

**BLUECHEL, ALAN (Republican)** Senator from the 45th District of King County, is serving his third session in the Senate and has served four terms in the House of Representatives. Born in 1924 in Edmonton, Alberta, Canada. Received a B.A.Sc. in electrical engineering, and a B.A. in General Studies from the University of British Columbia. Vice Chairman, Washington Land Planning Commission; World's Fair Commission-Expo '70, Osaka, Japan. He is president of Loctwall Corporation.



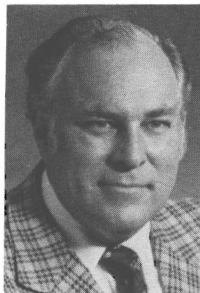
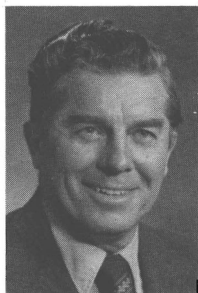
**BOTTIGER, R. TED (Democrat)** Senator from the 2nd District comprising part of Pierce and Thurston Counties, is serving his fourth session in the Senate and has served four terms in the House of Representatives. Born in 1932 in Tacoma. Graduate from University of Puget Sound with a B.A. degree and the University of Washington Law School. He is an attorney practicing in Tacoma. He and his wife, Darlene, have three children.

# SENATORS



**CLARKE, GEORGE W. (Republican), Minority Floor Leader.** Senator from the 41st District of King County, served two sessions in the House of Representatives and is serving his fifth session in the Senate. Born in Perry, Iowa, he is an attorney. Served as a naval officer in World War II. Served 20 years, Mercer Island School Board. Member, Seattle Chamber of Commerce and Rotary. He has three children.

**CONNER, PAUL H. (Democrat)** Senator from the 24th District comprising Clallam, Mason, Jefferson and part of Thurston counties. Appointed to the Senate in 1957, served ten terms in the House of Representatives, elected to the Senate in 1977. Born in 1925 in Port Angeles. Attended Port Angeles Business College, Western Washington State College and University of Washington. He and his wife, Thelma, have five children.



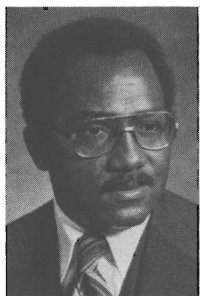
**DAY, WILLIAM S. (BILL) (Democrat)** Senator from the 4th District comprising part of Spokane and Whitman Counties, served five sessions in the House of Representatives and is serving his sixth session in the Senate. Speaker of the House in 1963. Born in 1923 in Rockford, Illinois. Graduate, Palmer College of Chiropractic in Davenport, Iowa, is a Chiropractor. Served in the Army during WW II. Member, Rotary, Spokane, Interstate Fair Board, Veterans of Foreign Wars. Has five children.

**DONOHUE, HUBERT F. (Democrat)** Senator from the 9th District comprising Adams, Asotin, Garfield and parts of Columbia, Grant and Whitman Counties. Serving his fourth term in the Senate. Served as Chairman of Senate Agr. and Hort. Committee and Rev. and Tax. Committee. Presently serving as Chairman of Senate Ways and Means Committee. Born 1921 in Dayton. Attended, W.S.U., is a farmer. Member, Eagles, Elks, Am. Legion, Wash. Wheat Assn., Farm Bureau, Christian Church, Wash. Cattle-men's Assn. He and his wife, Evelyn, have four sons.

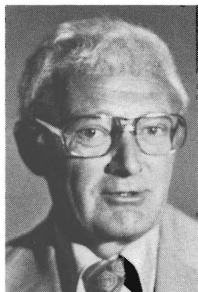


# SENATORS

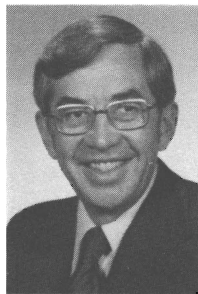
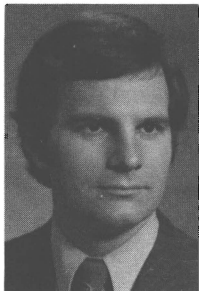
**FLEMING, GEORGE (Democrat), Majority Caucus Vice Chairman.** Senator, 37th District, King County. Served one session in House, serving fifth session in Senate. Born in 1938 in Dallas. Graduate U of W with B.A. in Bus. Adm. Member, Rose Bowl teams 1960 and 1961. Econ. Develop. Manager, Pac. NW Bell, Member; St. Urban, Racial, Rural Disadvantaged Com.; Center for Urban Studies (WWSC); Randolph Carter Center; Pacific NW Travel Assn.; Econ. Develop. Executives of Washington. He and his wife, Tina, have two daughters, Sonja and Yemi.



**GALLAGHAN, ART (Republican)** Senator from the 26th District comprising parts of Kitsap and Pierce Counties, is serving his first session in the Senate. Graduated from Washington State University, B.S. in Wildlife Management. Served as an officer of the Tacoma Performing Dance Company, the Gig Harbor Kiwanis Club, Helmsmen, Peninsula V.I.P. group. Former Director, Peninsula School District. Past member, Elks, Boy Scouts of America, Northwest Steelheaders, Veterans of Foreign Wars, American Legion. Member of Gig Harbor Methodist Church. World War II Navy veteran. He and his wife, Deanie, have two children.



**GASPARD, MARCUS S. (Democrat)** Senator from the 25th District of Pierce and King Counties, is serving the second session of his first term in the Senate, where he has been the Chairman of the Agriculture Committee while being a member of the Education, Energy and Utilities, Parks and Recreation, and Financial Institutions Committees. He has also served two terms in the House of Representatives where he was Assistant Majority Whip. He was born in 1948 and reared in Puyallup, Washington. He is a graduate of the University of Oregon and is an accountant. Marc and his wife, JoAnne, live in Sumner, Washington.



**GOLTZ, H. A. "BARNEY" (Democrat)** Senator from the 42nd District, Whatcom County, is serving his third session in the Senate and has served one term in the House of Representatives. Born in 1924 in Minnesota. Graduate Macalester College, B.A., and University of Minnesota, M.A., is Director of University Planning at WWU, Bellingham. He and his wife, Marguerite, have one son.

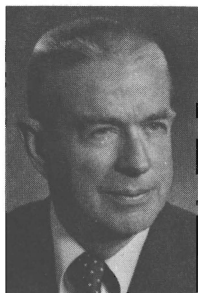


# SENATORS



**GOULD, SUSAN E. (Republican)** Senator from the 21st District of Snohomish County, serving her third session. Born in Seattle, attended Roosevelt High School and Whitman College, graduated from the University of Washington in chemistry. Former research and analytical chemist, past president of Snohomish County League of Women Voters, served two terms on the Edmonds School Board, was a member of the Gov.'s Comm. on Law & Justice, currently on a national task force on Indian affairs. She and her husband, Ray, have three grown children.

**GUESS, SAM C. (Republican)** Senator from the 6th District of Spokane County, is serving his ninth session. Born in 1909 in Greenwood, Mississippi. Graduate, University of Mississippi with B.S. in Civil Engineering. Graduate student at W.S.U. working on a Master of Science in Engineering. Served with the First U.S. Army in Europe. Member, Sigma Nu fraternity and Kiwanis Club. He and his wife, Dorothy, have two children.



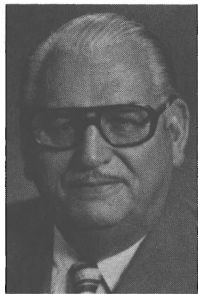
**HANSEN, FRANK D. "TUB" (Democrat)** Senator from the 13th District comprised of Kittitas, most of Grant, part of Yakima Counties, serving his first term in the Senate, served three terms in the House of Representatives. Born in Olema, Washington, in 1913. Past Chairman, Agricultural Stabilization Conservation service; Past Director, Washington State Cattlemen's Association. Member Grange and Elks. He and his wife, Wanda, have four married children. Retired cattle rancher, resident of Grant County since 1917.

**HAYNER, JEANNETTE C. (Republican)** Senator from the 16th District comprising Franklin, Walla Walla and Columbia (part). Serving her second session in the Senate, served two terms in the House of Representatives. She was born in Portland, Oregon. Received B.A. and J.D. from the University of Oregon. She and her husband, Dutch, have three children.

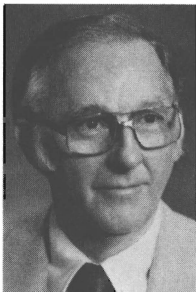


# SENATORS

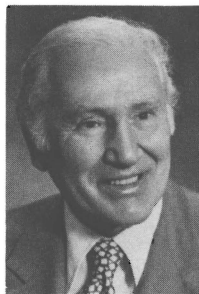
**HENRY, AL (Democrat), President Pro Tem.** Senator from the 17th District comprising Klickitat, Skamania, and part of Clark Counties. Served four terms in the House of Representatives and is serving his twelfth session in the Senate. Born in Ness County, Kansas. Attended business school, is a telephone company executive. Served in WW II and National Guard, Past President, Eagles; member, Elks, Grange, Advisory Board of American Security Council. His wife's name is Anne.



**JONES, JOHN D. (Republican) Minority Whip.** Senator from the 48th District of King County. Served one session in the House of Representatives, and was appointed to the Senate January 8, 1973, and is serving his fourth session. Born in 1923 in Wales. Attended Wayne State University, is a manager of Pacific Northwest Bell Telephone. Past President, Bellevue Chamber of Commerce; President, Rotary; Chairman, North King County UGN. He and his wife, Ruth, have two children.

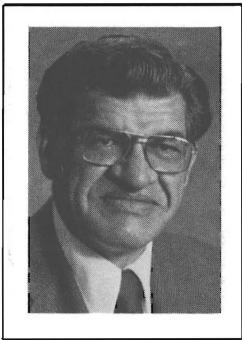


**KEEFE, JAMES E. (Democrat), Dean and Vice President Pro Tem.** Senator from the 3rd District of Spokane County, is serving his sixteenth session in the Senate. Born in 1908 in New York City. Graduate, Gonzaga High School, is employed as a sales manager. Holds honorary law degree from Gonzaga University. Member, Elks, Moose. He and his wife, Eileen, have two sons.



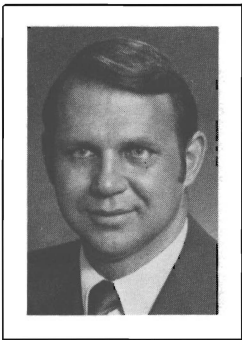
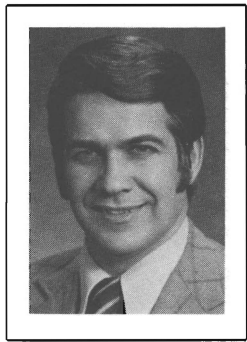
**LEE, ELEANOR (Republican)** Senator from the 33rd District. Attended Washington State University and graduated from The Evergreen State College in Political science. Business manager and director of a manufacturer's representative firm. Former State Land Planning Commissioner and League of Women Voters official. She and her husband, David, have three daughters.

# SENATORS



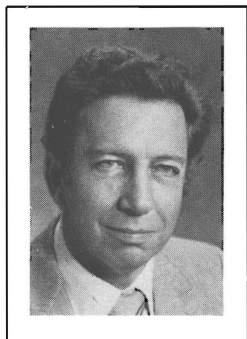
**LEWIS, R. H. (BOB) (Republican), Minority Assistant Floor Leader.** Senator 5th District, Spokane County, serving sixth session in the Senate. Born in Deer Park, Washington. Graduate of University of Missouri. Vice President, Public Affairs, Lincoln Mutual Savings Bank. Spokane City Councilman from 1964-69. Past President, Association of Washington Cities; served as Chairman of Spokane Board of Health; Member, State Urban Affairs Advisory Council and State Municipal Research Council. He and his wife, Peggye, have three children.

**LYSEN, KING (Democrat)** Serving his first term in the Senate. Representing the 31st District of King County. Served four terms in the House of Representatives. Born in 1942 in Minneapolis. Graduate, Seattle University with degree in Education and Political Science. A former high school teacher and counselor. Is in real estate and investments. He and his wife, Tony, have four children.



**MARSH, DAN (Democrat), Assistant Majority Leader.** Senator from the 49th District of Clark County, is serving his fourth session in the Senate. Previously served four terms in the House of Representatives from 1965 to 1973. Born in 1937 in Salem, Ore. Graduate, Willamette Univ. and Univ. of Oregon with B.A. and J.D. degrees, is an attorney. Served in National Guard. Member Washington Athletic Club, Sigma Alpha Epsilon, Tau Kappa Alpha, Phi Alpha Delta and Grange.

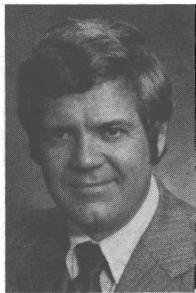
**MATSON, JIM (Republican), Minority Leader.** Senator from the 14th District of Yakima County; is serving his sixth session. Born in 1927 in Yakima. Attended Whitman College and Yakima Valley College, is in the fruit growing, packing and shipping business. Veteran of WW II. Member, Elks, Kiwanis, and Chamber of Commerce. He and his wife, Judi, have five children.



# SENATORS

## **McDERMOTT, JAMES A. (Democrat)**

Senator from the 43rd District, King County. Is serving his third session in the Senate and served one term in the House of Representatives. Age 42. Graduate, Wheaton College, B.A., and University of Illinois Medical School; is a child and adult psychiatrist. LCDR (MC) USNR, 1968-70. Former chairman, Coalition for Open Government. He and his wife, Virginia, have two children.



**MOORE, RAY (Democrat)**, is serving his first session in the Senate. Born in Seattle. Attended the University of Washington. Businessman: Vice President For Investments, Shearson Hayden Stone; President, King Gallatin Restaurant Corp.; Chairman of the Board, Technical Research Co.; Partner, Sagemoor Farms. Former chairman, Washington State Securities Committee. Past president, Washington State Mental Health Association. He and his wife, Virginia, have a teenage daughter at home.

**MORRISON, SID W. (Republican)** Senator from the 15th District of Yakima County, is serving his third session, preceded by eight years in the House of Representatives. Born in 1933 in Yakima. Graduate, Washington State University with B.S. in Agriculture, is a fruit grower. Served in the Army overseas. Former Chairman, Washington Apple Commission. Member, Methodist Church, Grange, Farm Bureau, Rotary, active in Scouting and United Way. He and his wife, Marcella, have four children.



**NEWSCHWANDER, CHARLES E. (Republican), Minority Caucus Chairman.** Senator from the 28th District of Pierce County, served four sessions in the House of Representatives and is serving his sixth session in the Senate. Born in 1920 in Tacoma. Attended University of Puget Sound and Graduate, University of Oregon Dental School, is a dentist. Served in WWII and Korean War. Member, Masons, Scottish Rite. He and his wife, Emma, have four children and six grandchildren.

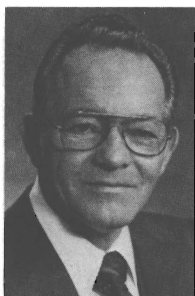
# SENATORS



**NORTH, LOIS (Republican)** Senator from the 44th District of King County is serving her third session in the Senate. Served six years in the House of Representatives. Has B.A. and General Secondary Teaching Credential from University of California at Berkeley. Employed by King County Budget Department. Former President, Seattle League of Women Voters and King County Freeholder. Board member of Northwest Hospital. She is the mother of three sons.

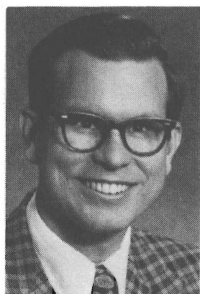
**ODEGAARD, GARY M. (Democrat), Majority Caucus Chairman.**

Senator from the 20th District comprising Lewis and Wahkiakum Counties and parts of Cowlitz, Pacific and Thurston Counties, is serving his sixth session. Born in 1940 in Bellingham. Graduate, W.W.U. with B.A. in Education, Graduate work at U. of W., is a community college teacher. Member, Alpha Grange, Centralia College Ed. Assn., Lewis County Pomona Grange, and International Reading Assn. Also member of Onalaska Presbyterian Church, Centralia-Chehalis Elks, and Chehalis Eagles. He and his wife, Kay, have two sons, Greg & Jeff.



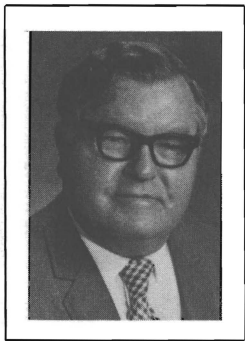
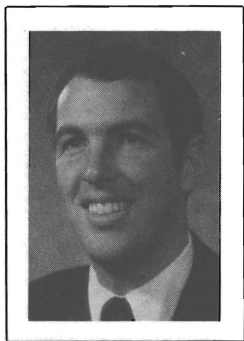
**PETERSON, LOWELL (Democrat)** Senator from the 40th District comprising San Juan and Skagit Counties and part of Whatcom County, he is serving his eighth session. Born in 1921 in Pateros, Washington, is an oil distributor. Served in the Navy in WW II. Member, American Legion, Eagles and Elks. A widower, Senator Peterson has two children at the family home in Concrete.

**PULLEN, KENT (Republican)** Senator from the 47th District serving his third session in the Senate, and has served one term in the House. Born in El Paso, Texas, in 1942. Graduate of University of New Mexico (B.S., 1963) and University of Washington (Ph.D., 1967). Former Assistant Professor of Chemistry at the University of Idaho. Currently works as a research engineer for the Boeing Company. He and his wife, Fay, have two children.



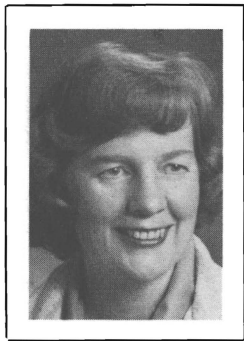
# SENATORS

**QUIGG, J. T. (Republican)** Senator from the 19th District comprising most of Grays Harbor and Pacific Counties, serving his first term in the Senate. Born in 1947 in Hoquiam, Washington, received a Bachelor of Science in Commerce in 1969 from the University of Santa Clara. The administrative manager of Quigg Bros.-McDonald, Inc. and President of Grayport Transfer and Storage, served as Grays Harbor County Delegate to Shorelines Master Plan, member of the City of Aberdeen Park Board, and member of Grays Harbor County and City of Aberdeen Shorelines Hearing Boards. He and his wife, Janie, have three children and make their home in Aberdeen.



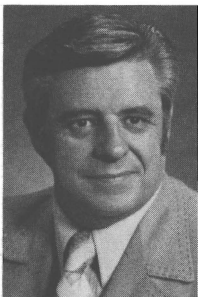
**RASMUSSEN, A. L. "SLIM" (Democrat)** Senator from the 29th District of Pierce County. Has served eight terms in the House of Representatives and is serving his eighth session in the Senate. Former Mayor of Tacoma. Born in Everett in 1909. He and his wife, Eleanor, have four children.

**RIDDER, RUTHE (Democrat)** Senator from the 35th District of King County. Elected to the Senate in November 1973 for the unexpired term. Reelected in 1974 and 1978. Graduate of the University of Washington with a B.S. in Psychology. Member of Rainier Beach Women's Club. Past Member of Wash. State Women's Council. Presently serving on Senate Select Committee on Nursing Homes, Education, Rules, and Ways and Means committees. She and her husband, Bob, have five children.



**SCOTT, GEORGE W. (Republican)** Senator from the 46th District of King County, served one session in the House of Representatives and is serving his fifth session in the Senate. Born in 1937 in Seattle. Graduate, Whitworth College with B.A. in Philosophy. Holds M.A. and Ph.D. degrees from U of W in History, is Vice Pres. for Social Policy at Rainier Bank. His wife, Carol, is Professor of Music at Seattle Pacific College.

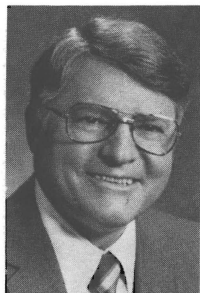
# SENATORS



**SELLAR, GEORGE L. (Republican)** Senator from the 12th District comprising Chelan and Douglas and part of Grant and Okanogan Counties, serving his fifth session in the Senate. Born in 1929 in Chicago, manager of Eye & Ear Optical in Wenatchee. Attended Wen. Valley College and Univ. of Nebraska. Member, Wash. St. Dispens. Optician Assn., Pac. Coast Contact Lens Society, Chamber of Commerce, Douglas County Regional Plan. Bd. He lives in East Wenatchee with his wife, Alma.

**SHINPOCH, ALBERT N. "BUD" (Democrat)**

Senator from the 11th District, comprising part of Renton and Kent, King County, serving his first term in the Senate, served four terms in the House of Representatives. Born in Council Hill, Oklahoma. Past President Renton Association for Handicapped Children. Member, Greater Kent Chamber of Commerce, member of Region IV Department of Social and Health Services Advisory Committee. Manager, The Boeing Company. Bud and his wife, Barbara, have two daughters and two grandchildren.



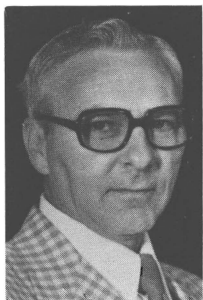
**TALLEY, DON L. (Democrat)** Senator from the 18th District comprising part of Cowlitz and Clark Counties, is serving his twelfth session. Born in 1918 in Tacoma. Graduate, high school, is employed as a Safety Supervisor for the Port of Longview. Served in the Navy during WW II. Chairman, Oceanographic Commission of Washington. Member, Masons, Elks, Moose, Eagles, American Legion and Grange. He and his wife, Deloris, have four children.

**TALMADGE, PHIL (Democrat)** Senator from the 34th District of King County. A magna cum laude graduate of Yale University with a B.A. in Political Science and a graduate of the University of Washington School of Law, where he served on the Law Review. Active participant in Common Cause and the Citizens' Legislative Reform Convention. An attorney for three years with the firm of Karr-Tuttle in Seattle.



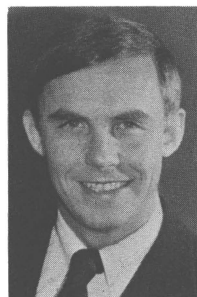
# SENATORS

**VAN HOLLEBEKE, RAY (Democrat)** Senator from the 1st District comprising part of King and Snohomish Counties, and is serving his fourth session in the Senate. A 34-year resident of the State of Wash. Bachelor of Commercial Science in Finance, Seattle University; Juris Doctor, Gonzaga University. Korean War veteran. Married to Donna Saur of Selah since 1953. They have nine children, ages 9 to 25 years old: Theresa, Maria, Kevin, Rita, Ann, Louie, Leo, Chris and Larry.



**VOGNILD, LARRY L. (Democrat)** Senator from the 38th District of Snohomish County serving his first term. Born in 1932 in Spokane. Is a retired Battalion Chief of the Everett Fire Fighters. He is currently self-employed. Member Elks, Eagles, Yacht Club, Kiwanis and Normanna Lodge. Served eight years in the Naval Reserve, two years active duty in Korea. He has two daughters.

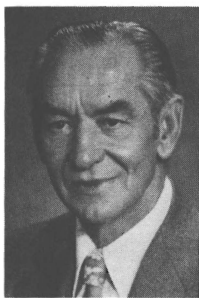
**von REICHBAUER, PETER (Democrat)** Senator from the 30th District, comprising So. King County (Auburn, Federal Way, Kent and Vashon Island). Elected to Senate in Nov. 1973 for unexpired term; reelected in 1974 and 1978, for four-year terms. Born in Seattle, raised in Tacoma, graduated from University of Alabama, commissioned in U.S. Army, and is a management consultant; Kiwanis (Board of Directors); Jaycees; Northwest Steelheaders; Federal Way Boy's & Girl's Club Board; Beta Theta Pi; Ducks Unlimited; and others.



**WALGREN, GORDON L. (Democrat), Majority Leader.** Senator from the 23rd District of Kitsap County, served one session in the House and is serving his sixth session in the Senate. Born in 1933 in Bremerton. Graduate, University of Washington with B.A. and J.D. degrees, is an attorney. Member, Elks, Eagles, Kiwanis, Masonic Orders. Former Prosecuting Attorney, Kitsap County. City attorney for Bremerton and Port Orchard. Holder, Freedoms Foundation Award. He and his wife, Sue, have two daughters and one granddaughter.

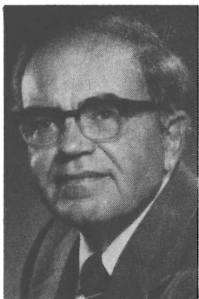
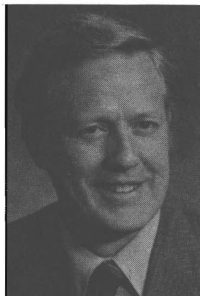


# SENATORS



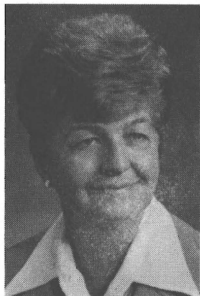
**WANAMAKER, F. (PAT) (Republican), Minority Caucus Vice Chairman.** Senator from the 10th District of Snohomish (part) and Island Counties. Has served three terms in the House of Representatives, and is serving his fourth session in the Senate. Born in Port Townsend. Educated at the University of Washington. He is a retired farmer. Member, Methodist Church, Masons, Chamber of Commerce, Lions and Elks. He and his wife, Irene, have four children.

**WILLIAMS, ALVIN C. (Democrat)** Senator from District 32 of King County; appointed February 1978; elected for term 1979-1982; served eight years in the House of Representatives. Born in 1930 in North Dakota. He served with U.S. Marine Corps and is a graduate, University of Washington, School of Architecture and Urban Planning, is an architect. Served on the Seattle Design Commission and Ballard Avenue Historic District Board. Past Chairman, Lake Union Advisory Commission and Past President of the Wallingford Community Council.



**WILSON, BRUCE A. (Democrat) Majority Caucus Secretary.** Senator from the 7th District comprising Ferry, Stevens, Pend Oreille and Lincoln Counties and portions of Okanogan and Spokane Counties. Serving his fifth session. Born in 1921 in Chicago. Graduate, Northwestern University. Retired weekly newspaper publisher. Past president, Omak Chamber of Commerce and Okanogan County Historical Society. He and his wife, Merilynn, have four children.

**WOJAHN, R. LORRAINE (Democrat)** Senator from the 27th District of Pierce County. Completed four terms in House of Representatives and serving her second session in the Senate. Born in Tacoma. Educated in Seattle schools and U. of W. Former consumer specialist for Wash. Labor Council, Member; Consumer Credit Counseling Service, Inc., Seattle & Tacoma; Wash. State Judicial Council; served 7 years on Wash. St. Women's Council; one year on Nat'l Adv. Board of Consumer Federation of America. She and her husband, Gilbert, have one son.

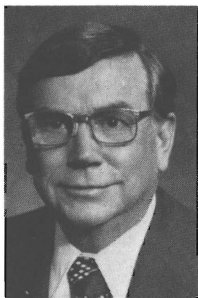


# SENATORS

**WOODY, DIANNE H. (Democrat)** Senator from the 39th District of Snohomish and King Counties (part). Appointed in September of 1977 for the unexpired term and elected to the Senate in November, 1977. Born in Washington and attended schools in both Western and Eastern Washington. Graduated from Western Washington State College with a BA degree in Psychology and History and has done post-graduate work at the University of Washington. She has been a social worker and small business proprietor and currently lives in Woodinville with her son and daughter.

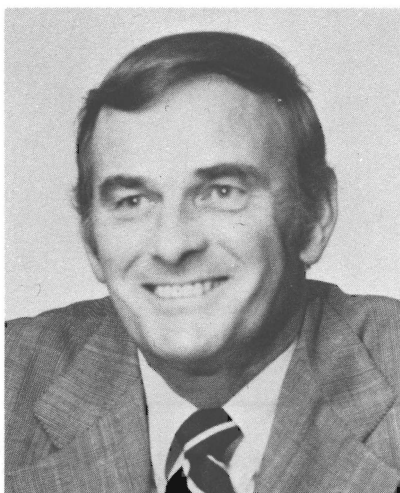


**SNYDER, SID (Democrat)** Secretary of the Senate, elected May 1969, and serving his sixth session. Was Assistant Chief Clerk and Acting Chief Clerk of the House from 1957 through May, 1969. First worked for the Legislature in 1949. Born in 1926 in Kelso. Attended Lower Columbia College, owns and operates a supermarket in Long Beach. Director of Washington State Food Dealers Association. Member, Elks, Lions. He and his wife, Bette, have three grown children.



**JOHNSON, CHARLIE (Democrat)** Elected Sergeant at Arms of the Senate for 1979 which is his 12th session in that position. He served as Sergeant at Arms of the House for one session prior to being elected in the Senate in 1957. Member of the House in 1951. Born 1911 in Elko, Wyoming, Member, Elks and Washington Athletic Club. Has four grown children.

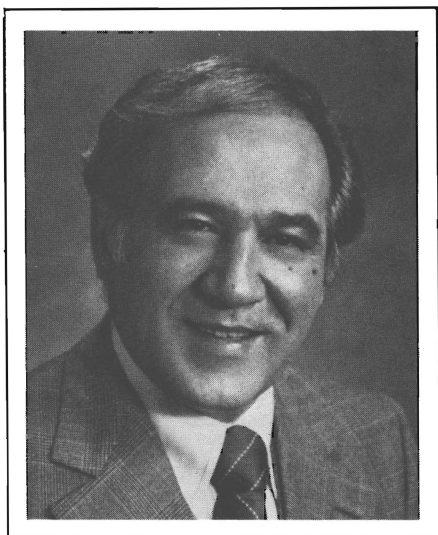
# HOUSE OF REPRESENTATIVES OF THE STATE OF WASHINGTON



**DUANE L. BERENTSON**  
**Republican Speaker of The House**

Duane L. Berentson, serving his ninth term in the House of Representatives, is the first Republican Speaker since 1972. First elected to the Legislature from the 40th Legislative District (Skagit, Whatcom and San Juan Counties) in 1961. Rep. Berentson has served the House in various leadership capacities including Chairman of the House Transportation Committee, Member of Rules and Minority Leader. Born in 1928 in Anacortes, he is a Graduate of Pacific Lutheran University and makes his living in the securities business. Speaker Berentson and his wife Joanne have five children and reside in Burlington.

# HOUSE OF REPRESENTATIVES OF THE STATE OF WASHINGTON



**JOHN A. BAGNARIOL**  
**Democratic Speaker of The House**

John A. Bagnariol (Democrat) who is currently serving as the Democratic Speaker, has represented South King County since 1967. He has previously held various leadership positions in the House of Representatives. Rep. Bagnariol served two terms as Chairman of the House Ways and Means Committee prior to assuming the office of Speaker of the House in 1977. He resides in Renton, Washington where he owns and operates his own insurance agency.

# ROSTER OF MEMBERS

## HOUSE OF REPRESENTATIVES

98 Members—  
49 Democrats, 49 Republicans

NAME	PARTY	DIST.	ADDRESS
ADAMS, A.A.	D	27	601 N. Yakima, Tacoma, WA 98403
ADDISON, Bruce	R	34	5274 - 45th Ave. S.W., Seattle, WA 98136
AMEN, Otto	R	9	Route 1, Box 45, Ritzville, WA 99169
BAGNARIOL, John A.	D	11	2008 S.E. 17th Court, Renton, WA 98055
BARNES, Richard O.	R	33	18118-6th Ave. S.W., Seattle, WA 98166
BARR, Scott	R	7	Route 1, Box 130, Edwall, WA 99008
BAUER, Albert	D	49	13611 N.E. 20th Ave., Vancouver, WA 98665
BECKER, Mary Kay	D	42	P.O. Box 81, Bellingham, WA 98225 So. Bellingham Station
BENDER, Rick S.	D	1	3420 N.E. 147th Place, #3, Seattle, WA 98155
BERENTSON, Duane	R	40	P.O. Box 426, Burlington, WA 98233
BLAIR, Scott	R	46	8712-25th Avenue N.E., Seattle, WA 98115
BOND, R. M. Dick	R	6	S. 4226 Crestline, Spokane, WA 99203
BREKKE, Joanne J.	D	32	6525 Sycamore N.W., Seattle, WA 98117
BROWN, Wendell B.	D	29	5615 S. Ferdinand, Tacoma, WA 98409
BURNS, Bill	D	43	2511 W. Montlake Place E., Seattle, WA 98112
CHANDLER, Rod	R	45	6522 208th Ave. N.E., Redmond, WA 98052
CHARNLEY, Donn	D	44	19344-11th Ave. N.W., Seattle, WA 98177
CLAYTON, Harold	R	15	P.O. Box 351, Toppenish, WA 98948
CRASWELL, Ellen	R	23	11826 Kitsap, Bremerton, WA 98310
DAWSON, Dan	R	26	P.O. Box 280, Gig Harbor, WA 98335
DECCIO, Alex A.	R	14	P.O. Box 1343, Yakima, WA 98907
DOUTHWAITE, Jeff	D	43	5518-31st N.E., Seattle, WA 98105
DUNLAP, Ron	R	41	3129-109th S.E., Bellevue, WA 98004
EBERLE, Bob	R	30	Route 2, Box 206, Vashon, WA 98070
EHLERS, Wayne	D	2	14301 S. Yakima, Parkland, WA 98444
ENG, John	D	37	P.O. Box 18088, Seattle, WA 98118
ERAK, John	D	19	617 West 3rd St., Aberdeen, WA 98520
ERICKSON, Phyllis K.	D	2	P.O. Box 44487, Parkland, WA 98444
FANCHER, Helen	R	7	Aeneas Route, Tonasket, WA 98855
FLANAGAN, S. E. "Sid"	R	13	Route 2, Box 989 Rd. S., N.W., Quincy, WA 98848
FULLER, W. H. "Bill"	R	20	330 Brockway Road, Chehalis, WA 98532
GALLAGHER, P. J. "Jim"	D	29	125 South 72nd, Tacoma, WA 98408
GALLOWAY, Shirley A.	D	49	1602 N. Divine Road, Vancouver, WA 98661
GARRETT, Avery	D	11	602 S.W. Langston Road, Renton, WA 98055
GRANDLUND, Barbara	D	26	3777 Pine Tree Drive, Port Orchard, WA 98366
GREENGO, Irv	R	46	3203 N.E. 88th, Seattle, WA 98115
GRIMM, Dan	D	25	904½-7th Ave. S.W., Puyallup, WA 98371
GRUGER, Audrey	D	1	3727 N.E. 193rd, Seattle, WA 98155
HALEY, Ted	R	28	5800-100th St. S.W. #30, Tacoma, WA 98499
HASTINGS, Richard "Doc"	R	16	5505 W. Sylvester, Pasco, WA 99301
HECK, Dennis L.	D	17	707 N.E. 118th Ave., Vancouver, WA 98664
HOUCHEN, Joan	R	10	471 E. North Camano Drive, Camano Is. 98292
HUGHES, Jerry M.	D	5	N. 3504 Milton, Spokane, WA 99205
HURLEY, Margaret	D	3	E. 730 Boone, Spokane, WA 99202
ISAACSON, Ray	R	8	2106 Lee Blvd., Richland, WA 99352
JOVANOVIICH, John	D	31	2001 S. 142nd, Seattle, WA 98168
KELLER, Ron	D	(22)	1319 Dickinson, Olympia, WA 98502
KING, Richard "Dick"	D	38	Legislative Building, Olympia, WA 98504
KNOWLES, Walt O.	D	4	E. 8423 Liberty, Spokane, WA 99206
KREIDLER, Mike	D	(22)	129 San Mar Drive N.E., Olympia, WA 98506

# ROSTER OF MEMBERS

## HOUSE OF REPRESENTATIVES

98 Members—  
49 Democrats, 49 Republicans

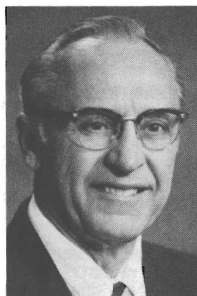
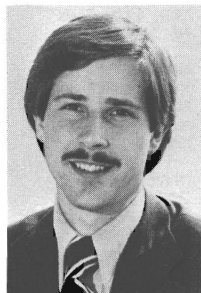
NAME	PARTY	DIST.	ADDRESS
LUX, Eugene V	D	35	5537 S. 119th, Seattle, WA 98178
MARTINIS, John	D	38	209 Bridgeway, Everett, WA 98201
MAXIE, Peggy Joan	D	37	1441 Madrona Drive, Seattle, WA 98122
MAY, William J. S. "Bill"	D	3	Sans Souci West, Spokane, WA 99201 W. 3231 Boone Ave., Sp. 711
McCORMICK, Geraldine	D	5	W. 1829 Northridge Ct. #4, Spokane, WA 99208
McDONALD, Dan	R	48	4650-92nd N.E., Bellevue, WA 98004
McGINNIS, Michael R.	R	6	S. 2206 Crestline, Spokane, WA 99202
MITCHELL, James B.	R	39	1015 Stitch Road, Lake Stevens, WA 98258
MONOHON, Carol	D	19	Route 1, Box 136, Raymond, WA 98577
NELSON, Dick	D	32	3612 Whitman North, Seattle, WA 98103
NELSON, Gary A.	R	21	9710 Wharf Street, Edmonds, WA 98020
NEWHOUSE, Irving	R	15	Route 1, Box 130, Mabton, WA 98935
NISBET, Andrew	R	24	Route 3, Box 457, Sequim, WA 98382
NORTH, Frances C.	D	47	Box 441, North Bend, WA 98045
O'BRIEN, John L.	D	35	1305 Joseph Vance Bldg., Seattle, WA 98101
OLIVER, Claude L.	R	8	302 South Reed, Kennewick, WA 99336
OWEN, Brad	D	24	918 Ellinor Street, Shelton, WA 98584
PATTERSON, E. G. "Pat"	R	9	N.E. 400 Campus, Pullman, WA 99163
POLK, William	R	41	7220-92nd Ave. S.E., Mercer Is. 98040
PRUITT, Paul	D	34	7537-31st S.W., Seattle, WA 98126
ROHRBACH, Eric J.	R	33	18979 Marine View Drive, Normandy Park 98166
ROSBACH, Wilma	R	20	470 N. Market Blvd., Chehalis, WA 98532
SALATINO, James E.	D	27	5002 LaHaDa Ave. N.E., Tacoma, WA 98422
SANDERS, Paul	R	48	2680 - 169th S.E., Bellevue, WA 98008
SCHMITTEN, Rolland	R	12	408 South Division Street, Cashmere, WA 98815
SCOTT, Gary H.	D	39	12913-307th S.E., Sultan, WA 98294
SHERMAN, Marion Kyle	D	47	24629 S.E. 200th, Maple Valley, WA 98038
SMITH, Curtis P.	R	13	Route 1, 875 I N.W., Ephrata, WA 98823
SMITH, Rick	D	23	P.O. Box 68, Silverdale, WA 98383
SOMMERS, Helen	D	36	2516 - 14th West, Seattle, WA 98119
SPRAGUE, Walt	R	21	20006-50th Avenue West, Lynnwood, WA 98036
STRUTHERS, Gene	R	16	601 Village Way #50, Walla Walla, WA 99362
TALLER, Joe	R	36	2852-42nd Avenue West, Seattle, WA 98199
TAYLOR, Ren	R	4	North 4710 Ella Road, Spokane, WA 99206
TEUTSCH, Delores E.	R	45	7334 Champagne Point Rd., Kirkland, WA 98033
THOMPSON, Alan	D	18	191 Nob Lane, Kelso, WA 98626
TILLY, Earl F.	R	12	P.O. Box 1845, Wenatchee, WA 98801
TUPPER, Steve	R	44	815 N.W. 122nd, Seattle, WA 98177
VALLE, Georgette	D	31	1434 S.W. 137th, Seattle, WA 98166
VAN DYKEN, Roger	R	42	1251 Garden Circle, Lynden, WA 98264
VROOMAN, Jerry L.	D	40	1011 North 12th St., Mount Vernon, WA 98273
WALK, George W.	D	25	904-9th Street S.W., Puyallup, WA 98371
WARNKE, Frank J.	D	30	29457-51st South, Auburn, WA 98002
WHITESIDE, Jim	R	14	3612 Howard Avenue, Yakima, WA 98902
WILLIAMS, Bob	R	18	111 Victoria St., Longview, WA 98632
WILSON, Simeon R. "Sim"	R	10	P.O. Box 145, Marysville, WA 98270
WINSLEY, Shirley J.	R	28	539 Buena Vista Ave., Fircrest, WA 98466
ZIMMERMAN, Hal	R	17	1432 N.E. 6th Avenue, Camas, WA 98607

# REPRESENTATIVES



**ADAMS, A. A. (Democrat)** Representative from the 27th District of Pierce County, is serving his sixth term. Democratic Chairman, Social and Health Services Committee since 1973; Member, Local Government Committee. Born in Bellingham, Washington. Graduated from Palmer College of Chiropractic, in Davenport, Iowa. Past President of American Chiropractic Association. Former Chairman of Tacoma Public Utility Board, Board of Directors of Boys Club of America. Member, Masonic bodies and Elks. He and his wife, Mildred, have one daughter.

**ADDISON, BRUCE (Republican)** Representative from the 34th District, West Seattle serving his first term. Graduate of Washington State University in Political Science and Economics. Active in West Seattle Chamber of Commerce, Friend to Friend, and Jaycees.



**AMEN, OTTO (Republican)** Representative from Legislative District 9 comprising Adams, Asotin, Garfield, Columbia, parts of Grant and Whitman Counties, is serving his seventh term. Graduate, W.S.U. with a B.S. in Pharmacy, is engaged in farming. Member, Grange, Farm Bureau, Lions International, and Chamber of Commerce. Served as President of Washington Assn. of Wheat Growers, President of Western Wheat, and Chairman of Washington Wheat Commission. He and wife, Doris, have two sons.

**BAGNARIOL, JOHN (Democrat)** Representative from the 11th District serving in the Legislature since 1967. He is currently serving as the Democratic Speaker. Born in 1932 in Renton. Active in community services. He owns and manages his own insurance agency. He and his wife, Edna, have eight children.



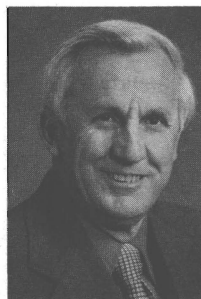
# REPRESENTATIVES

**BARNES, DICK (Republican)** Representative of the 33rd District, Des Moines, Normandy Park, the Sea-Tac Airport and parts of Burien serving his third term. Born in Iowa he left the University of Illinois to become an Air Force pilot during World War II. As a Reservist he was recalled for duty during the Korean and Viet Nam wars. Educated as a Geophysical Engineer at the Colorado School of Mines, employed by the Boeing Company since 1955 and is presently a Systems Analyst in Air Traffic Control Studies. He and his wife, Sylvia, have three children.



**BARR, SCOTT (Republican)** Representative from the 7th District comprising Lincoln, Pend Oreille, Stevens, Ferry, and parts of Okanogan and Spokane Counties. Serving his 2nd term in the House. Born in 1916. Attended Whitman County schools. He and his wife Evelyn have lived on their farm near Edwall in Lincoln County since 1948. Belongs to Grange, Farm Bureau, Cattlemen's Ass'n. Served as President of State Wheat Grower's Ass'n and State Ass'n of Conservation Districts. Member Spokane Area Chamber of Commerce.

**BAUER, ALBERT (Democrat)** Representative from the 49th District of Clark County, is serving his fifth term and is Chairman of the House Democratic Caucus. Born in Lewistown, Montana in 1928. Graduate Portland State College and Oregon State College with Masters in Education. Currently, President and co-owner of Family Farm Corporation. Past President, Community Club, PTA, Vancouver Education Assoc. Member, Kiwanis, Grange, American Legion. He and his wife, Patricia, have three children.



**BECKER, MARY KAY (Democrat)** Representative from the 42nd District, western Whatcom County is Democratic Chairman of Institutions Committee and is serving third term. Born in Aberdeen, Washington; raised on the Olympic Peninsula at Kalaloch. Graduate, Stanford University; also received B.A. from WWU. Co-authored book on oil spills; served in VISTA and worked as a legal secretary in Bellingham. Now law student at the University of Washington.

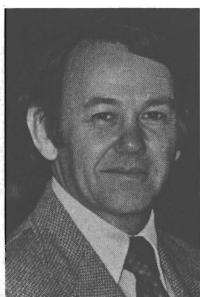
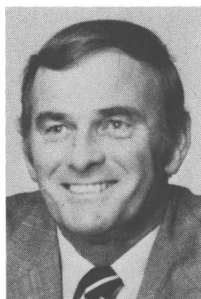


# REPRESENTATIVES



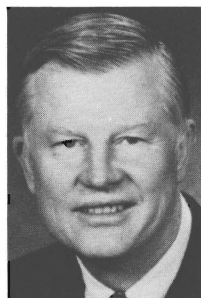
**BENDER, RICK S. (Democrat)** 4th term Representative from the 1st District of north King and south Snohomish Counties. Member of Rules, Education and Transportation Committees. Born in Fairbanks, Alaska in 1949. Attended North Seattle Community College, University of Washington and University of Puget Sound; served in the U.S. Army Signal Corps, Vietnam veteran. Employed on Federal Project to Mobilize The Private Sector Resources for emergency services.

**BERENTSON, DUANE (Republican)** Representative from the 40th District comprising San Juan, Skagit and Whatcom Counties, is serving his 9th term and is Republican Speaker. Born in 1928 in Anacortes. Graduate, Pacific Lutheran University, he is in the securities business. He and his wife, Joanne, have five children.



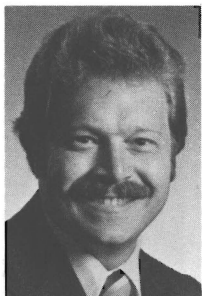
**BLAIR, SCOTT (Republican)** has represented the 46th District in the House since 1971 and is recognized as a legislative authority in the area of public employee retirement systems. Blair is the Republican Chairman of the House Appropriations Committee and also serves on the Financial Institutions Committee and the Legislative Budget Committee.

**BOND, R. M. (DICK) (Republican)** Representative from 6th District of Spokane County, serving his third term. Born in Spokane, educated at Calif. Institute of Tech., Univ. of Calif. Berkeley (ASB President). Univ. of So. Calif. with degrees in Mech. Engr., Bus. Admin., and a Comm. Pilots lic. Dick is a Marine Corps WWII vet., Rotarian, American Legion, Director of Nat'l. LP-Gas Assoc., Air Force Assoc., Eagle Scout and a Christian. He founded and operates Solar Gas Company in Spokane and Calgary. He and his wife, Patty, have three sons.



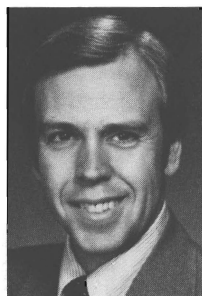
# REPRESENTATIVES

**BREKKE, JOANNE J. (Democrat)** representing Seattle's 32nd District; Ballard, Fremont, Green Lake, Greenwood, Phinney Ridge, and Wallingford. Appointed February, elected November 1978. A lifetime King County resident, born in North Bend, Washington. Graduated University of Washington 1957, with a B.A. in Sociology. Active in education and community concerns. She and her husband Gene have three children; Melene, Marshall and Alison.



**BROWN, WENDELL B. (Democrat)** Representative from the 29th District, Pierce County area. Born 1945, life-long resident of the 29th District. He graduated from the University of Puget Sound in 1972 with a B.A. in Business Administration and is a disabled American veteran. He is a claims representative serving his first term in the House of Representatives.

**BURNS, WILLIAM L. (BILL) (Democrat)** Representative from the 43rd District of King County is serving his second term. Born in 1927 in Brockwell, Arkansas. Attended U. of W. Self employed. Has been active in many community organizations. During 45th legislative session served as Vice Chairman of Higher Education, and on State Government and Transportation Committees. He and his wife, Doris, have one daughter, Susan.



**CHANDLER, ROD (Republican)** Representative from the 45th District comprising the northeast portion of King County, is serving his third term. Born in 1942 in La Grande, Oregon. A former television news correspondent, he is now a partner in Chandler/Corcoran Communications, a public-relations and employee relations consulting firm. He and his wife, Joyce, have a son John, 8, and a daughter, Amanda, 6. The Chandlers live on a small farm east of Redmond.

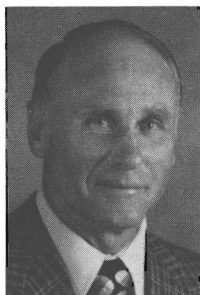
# REPRESENTATIVES



**CHARNLEY, DONN (Democrat)** is serving his fifth term, representing the 44th District. Fifty years old, Donn is a professor of Geology at Shoreline Community College. He holds BA and MS degrees from U of Wash.; attended Seattle U and U of Minn. He serves on the Boards of the Nature Conservancy, Mental Health North, and the Northwest Kidney Center. Member, Richmond Beach Community Council. Majority Whip-1976; Ass't Maj. Floor Leader - 1977; Democratic Chrp. Local Govt. Committee-1978. Donn and Lucy have five children.

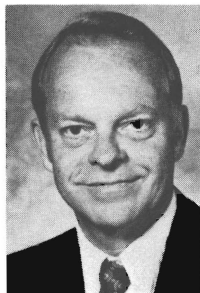
**CLAYTON, HAROLD R. (Republican)**

Representative from the 15th District comprising upper and lower rural areas of Yakima County. Serving his second term. Born in 1920 in Idaho. World War II Veteran. Active in church, community affairs, including ten years Toppenish School Board. Twenty-eight years diversified farming in central valley area. President Central Washington Farms Crops Association. Director of Washington Asparagus Association. He and his wife Lois, have five children.



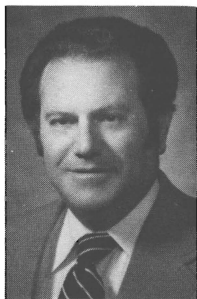
**CRASWELL, ELLEN (Republican)** Representative from the 23rd District. Kitsap County. Born in Seattle; raised in Kitsap County. Attended the University of Washington. Worked in Medical Technology, Speech Therapy and co-owner and manager of an art shop. She is serving her second term in the Legislature and is a member of the Wash. State Arts Commission and the Oceanographic Commission of Wash. She and her husband, Bruce, have four grown children.

**DAWSON, DAN (Republican)** Represents the 26th legislative district. Life-long resident of Washington and graduate of WSU. A USAF veteran of the Vietnam war, is active in numerous civic organizations including the Lions International. Serves on the House Transportation, Natural Resources and Insurance Committees. He and his wife Harriet, sons Danny and Steven, live in Gig Harbor on their family-owned tree farm.



# REPRESENTATIVES

**DECCIO, ALEX A. (Republican)** Representative from the 14th District comprising upper half and central part of Yakima County, including city of Yakima. Born in Washington. Insurance broker by profession. Serving 3rd term. Formerly represented 15th District.



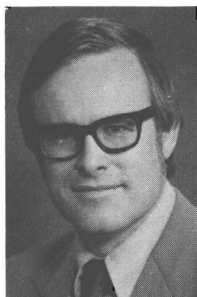
**DOUTHWAITE, JEFF (Democrat)** Representative from District 43 of King County, is serving his fifth term. Graduate, University of Washington with B.S. and M.S. in Electrical Engineering, is a professor at University of Washington. Member, University District Community Council, AAUP, Ravenna Community Assn., University District Chamber of Commerce, Wash. Environmental Council, and Common Cause. He and his wife, Mary, have three children, Charles, John and Julia.

**DUNLAP, RON (Republican)** is serving his third term as a Representative from the 41st District. Born in South Bend, Indiana, he studied Engineering at Purdue University (B.S. and M.S.) and then Economics at Harvard University. He is a member of management with Boeing Commercial Airplane Company's Sales Organization in Renton. He and his wife, Allison, live in Bellevue with their two daughters, Marcia and Lynne.



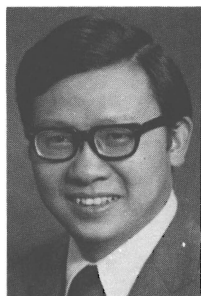
**EBERLE, BOB (Republican)** Representative from the 30th District. Formerly served in Thirty-Eighth Legislature, and as an elected member of King County Charter Commission. Former University Instructor, and currently employed as a Training Specialist and Senior Engineer in the commercial aircraft industry. Variously involved in Church, School and Civic affairs. He and his wife Kay have three children, Sue, Dan and Jill.

# REPRESENTATIVES



**EHLERS, WAYNE (Democrat)** Representative from the 2nd District of Pierce and Thurston Counties, is serving his fourth term. Born in Bellingham in 1938, he is an educator in both the public schools and university. Graduate of WWSC (B.A. and B.S.) and the University of Denver (M.A.). Active in professional and civic organizations. He and his wife, Frances, have two sons.

**ENG, JOHN (Democrat)** Representative from the 37th District of King County. He is serving his fourth term. Born in 1942 in Hong Kong. Graduate of University of Washington with B.A. in Business Administration. Former Peace Corps Volunteer. During 45th Legislative session served Financial Institutions (Chairman), Revenue, and Local Government Committees.



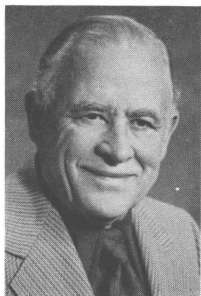
**ERAK, JOHN (Democrat)** 19th District Representative, is serving his first term. Born in Aberdeen. Employed by the Wishkah Valley School District as an elementary teacher. A graduate of Grays Harbor College, Central Washington University and the University of Oregon. Served on the Aberdeen City Council, and as Grays Harbor County School Superintendent. He and his wife Dolores have three children, Ron, Tracey and Kay.

**ERICKSON, PHYLLIS K. (Democrat)** Representative from the 2nd District, comprising part of Pierce and Thurston Counties, is serving her fourth term. Washington State resident for 28 years. University of Utah graduate. Former member local school board; trustee, Community College District XI; State Board Member, League of Women Voters; American Cancer Society. She and her husband, Jack, have 4 children and 3 granddaughters.



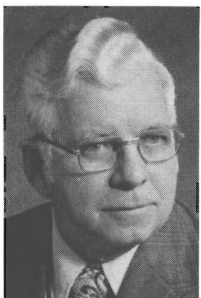
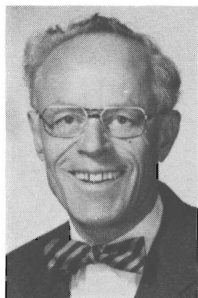
# REPRESENTATIVES

**FANCHER, HELEN I. (Republican)** Representative from the 7th District comprising Ferry, Stevens, Pend Oreille, Lincoln, and parts of Spokane and Okanogan Counties, is serving her second term. Born in Seattle, attended the University of Washington and Eastern Washington State College. She and her husband, Jick, have three grown children and are engaged in cattle ranching.



**FLANAGAN, SID (Republican)** Representative from the 13th District comprising Grant, Kittitas and part of Yakima Counties, is serving his tenth term. Born in 1909 in Bellingham. Graduate of the University of Washington, majoring in Public Utilities, he is a farmer and cattleman. Member, St. Pius Xth Catholic Church of Quincy. He and his wife, Vyvien, have three children.

**FULLER, WILLIAM H. (BILL) (Republican)** Representative from the 20th District made up of Lewis, Wahkiakum, and part of Cowlitz, Thurston, and Pacific Counties. Serving his second session. Born Sandpoint, Ida., 1913, Washington resident since 1930. Bill and his wife, Claire Hess Fuller, have 8 children.



**GALLAGHER, P. J. (JIM) (Democrat)** Representative from the 29th District of Pierce County, is serving his tenth term. Born in 1915 in Taylor, Washington. Graduate, Washington State University. He is employed as a Pierce County building inspector. Member, Knights of Columbus and Eagles. He and his wife, Mabel, have six children.

# REPRESENTATIVES



**GALLOWAY, SHIRLEY A. (Democrat)**

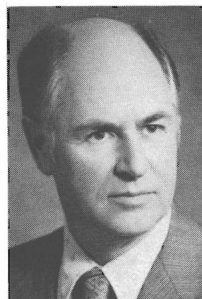
Representative from the 49th District, Vancouver. Born in 1934 and a resident of Vancouver since 1944, community volunteer for 18 years. Attended Clark College (A.A. & S), Washington State University and Evergreen State College. She is married, has five children and is a homemaker.

**GARRETT, AVERY (Democrat)** Representative from 11th District of King County will be serving his seventh term. Born in Georgia in 1916. Boeing employee. Previously served as Caucus Chairman, Speaker Pro Tempore and Mayor of Renton. He and his wife Edna-May have a son, three daughters and one grandson.



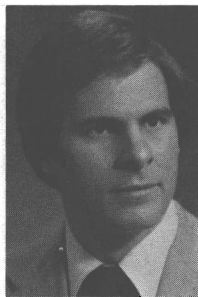
**GRANLUND, BARBARA (Democrat)** Representative from the 26th District comprising part of Pierce and Kitsap Counties. Born in Nebraska in 1928; resident of 26th District 32 years. Educated in Tacoma public schools, attended Olympic College, she is a homemaker and community and Democratic party activist. Serves on Kitsap United Way Board, and other activities include: League of Women Voters, American Cancer Society, P.T.A., Children's Orthopedic Hospital and Port Orchard Kiwanians. She and her husband, Win, reside in Port Orchard and have 2 children and one granddaughter.

**GREENGO, IRV (Republican)** Representative from the 46th District, King County, is serving his third term. Graduate of University of Minnesota with a B.S. in Aeronautical Engineering, attended Seattle University Graduate School. He is an aircraft design engineer. Greengo serves on Commerce, Revenue and State Government Committees. He has served on Social and Health Services, Institutions and Natural Resources Committees. Irv and his wife Beth live in northeast Seattle.



# REPRESENTATIVES

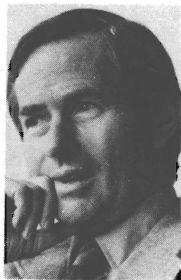
**GRIMM, DANIEL K. (Democrat)** Representative from the 25th District of Pierce and King Counties, and is serving his second term. Born in 1949 in Aberdeen, Washington, and reared in Puyallup. Graduate, Columbia University with B.A. in English Literature. Career in personnel management, most recently employed by the American Cancer Society. Member, Puyallup School District Advisory Committee on Vocational Education; Elks; Kiwanis.



**GRUGER, AUDREY LINDGREN (Democrat)** Representative from the First District comprising part of King and Snohomish Counties is serving her second term. Born in Minot, North Dakota in 1930; University of Washington graduate. Served on the Board of Directors of the League of Women Voters of Seattle, and as Legislative Liaison for the Council of Planning Affiliates, (COPA). Currently member of State Advisory Committee on Children & Youth Services to DSHS, Shoreline YMCA Board and Wash. YMCA Juvenile Justice Taskforce, Bothell-Shoreline AAUW and Common Cause. She and her husband, Edward, have three adult children.



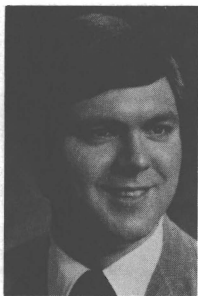
**HALEY, TED (Republican)** Representative from the 28th District composing Lakewood, Steilacoom, Fircrest and University Place, is serving his third term. Born in Tacoma in 1920. Has a B.A. from Amherst College and M.D. from the University of Rochester. Is a Lieutenant Colonel, retired, from the U.S. Army Medical Corps. In private practice in Lakewood. A widower with four grown children.



**HASTINGS, RICHARD 'DOC' (Republican)** Representative from the 16th District which includes Franklin, Walla Walla, and part of Columbia Counties. He is serving his first term in the House. Born in Spokane in 1941, he is in the institutional paper and janitorial supply business. He is a past president of the Pasco Chamber of Commerce, member of Rotary International, and a past member of the Jaycees. He and his wife Claire have three children: Kirsten, Petrina, and Colin, and live in Pasco.

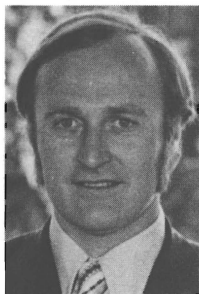


# REPRESENTATIVES



**HECK, DENNIS L. (Democrat)** Representative from the 17th District comprising Skamania, Klickitat and part of Clark Counties. Heck was first elected in 1976 and served as a member of the Appropriations and Natural Resources Committees. He was vice-chairman of the Education Committee and Chairman of the Subcommittee on Basic Education. Heck and his wife, Paula, live in the Evergreen area of Clark County. He is the owner of SEQUOIA NORTHWEST, a public relations consulting firm.

**HOUCHEN, JOAN (Republican)** Representative from the 10th District. Is serving her first term. Educated at University of Washington and worked in merchandising. Has owned and operated a small family farm on Camano Island for 11 years. She serves her community and county on many boards. Husband Ray, daughter Lis and son Chris.



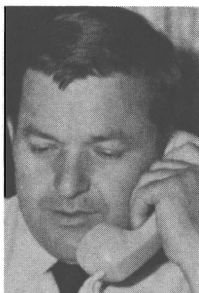
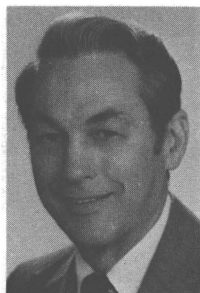
**HUGHES, JERRY M. (Democrat)** Representative from the 5th District, Spokane. Born in 1944, and a resident of Spokane since 1962, he is a graduate of Gonzaga University with a degree in Political Science and Government and is currently an instructor in Government and U.S. History at North Central High School, Spokane. He is married and has two children. Rep. Hughes has served in the House of Representatives since November of 1976.

**HURLEY, MARGARET (Democrat)** Representative from the 3rd District of Spokane County, is serving her fourteenth term. Graduate, Holy Names College with Bachelor of Arts in Education. Member, Citizens Against Residential Freeways, National Order of Women Legislators. She has four children.



# REPRESENTATIVES

**ISAACSON, RAY (RAYMOND E.) (Republican)** Representative from the 8th District, is serving his first term. Born in Superior, Arizona in 1928. Manager of Systems Integration, Basalt (Nuclear) Waste Isolation Program, Rockwell Hanford Operations. A graduate of the University of Washington in Chemical Engineering. He has extensive experience in nuclear engineering, and was responsible for initiating and managing research and development programs in physical and life sciences as interrelated with responsible management of radioactive wastes. He and his wife Evelyn have four children, Erick, Vincent, Wanda and Carl.



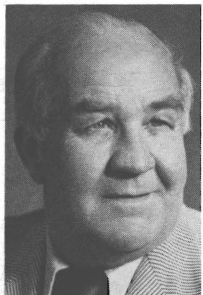
**JOVANOVICH, JOHN (Democrat)** Representative from the 31st District, Seattle. Born in 1930 and a resident of South Seattle for 36 years. He is in the marine supply business. He is married and has four sons.

**KELLER, RON (Democrat)** Representative from the 22nd District, Thurston County, is serving his 2nd term. Born in 1937 in Olympia, attended both U of W and WSU. Active in several civic and political organizations.



**KING, RICHARD (DICK) (Democrat)** Representative from the 38th District of Snohomish County, is serving his eighth term. He is Democratic Floor Leader. Born in 1934 in Ritzville. Graduate, University of Washington with B.A. and M.A. degrees, teaches speech and parliamentary procedure at Everett Community College. He and his wife, Mary Evelyn, have four children.

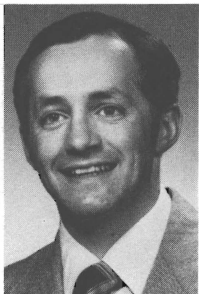
# REPRESENTATIVES



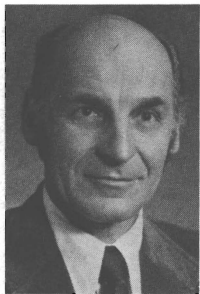
**KNOWLES, WALT (Democrat)** Representative from the 4th District comprising Spokane and Whitman Counties. Serving his fifth term. Born and educated in Spokane, is a graduate of Eastern Washington College and Gonzaga University, attended University of Washington. He is a veteran of World War II and Korea, a semi-retired attorney in Spokane, and former State President of Moose. Democratic Whip, Judiciary, Rules, Fin. Inst. He and his wife, Betty, have three children.

**KREIDLER, MYRON "MIKE" (Democrat)**

Representative from the 22nd District located in Thurston County and including the state capitol. Elected in 1976 to the House. Born in 1943 in Tacoma. Graduating from Curtis H.S., Pacific University and the University of California at Los Angeles. He is a Group Health optometrist and with his wife, Lela, and their three children live in Olympia.



**LUX, EUGENE (Democrat)** Representative from the 35th District of King County, comprising Rainier Valley, Beacon Hill, Georgetown, South Park. Served interim Senate appointment, 1973, appointed and subsequently elected to the House, 1975, re-elected in 1976. Born in Lincoln, Nebraska, 1926, a building contractor in southeast Seattle 30 years. Board trustee, Group Health Cooperative of Puget Sound. Served in Merchant Marine, active in consumer, community and cooperative organizations, Democratic Chairman, Labor Committee; member, Social & Health Services and Financial Institutions Committees.

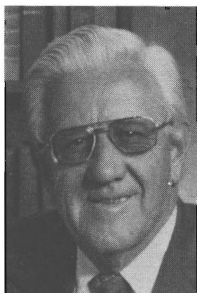


**MARTINIS, JOHN (Democrat)** Representative from the 38th District of Snohomish County, is serving his sixth term. Born in 1930 in Everett. He is a retail merchant.



# REPRESENTATIVES

**MAXIE, PEGGY JOAN (Democrat)** Representative from the 37th District of King County, is serving her fifth term. Born in 1936 in Amarillo, Texas. Graduate, Seattle University with B.A. in Psychology, University of Washington with Master's degree in Social Work. Honorary Doctor of Laws Degree received from St. Martin's College. President of Peggy Maxie & Associates (Human Resource Consultants).



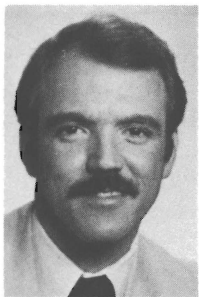
**MAY, WILLIAM J. S. "BILL" (Democrat)** Representative from the 3rd District of Spokane County, is serving his tenth term. Graduated from high school and has taken special courses in Advertising and Electronics. Recently retired. Active in Civic affairs and now serving on Spokane Transit Commission. He and his wife, Pearl, have three children.

**McCORMICK, GERALDINE (Democrat)** Representative from District 5 of Spokane County, is serving her sixth term and is Majority Caucus Secretary. Born in Spokane. Attended Whitworth College, and is a homemaker. Member, Eagles Lodge, Triangle Grange, and VFW Auxiliary. She has two daughters and two grandchildren.



**McDONALD, Dan (Republican)** First elected in 1978, represents the Bellevue, Kirkland, Redmond area of King County. Representative McDonald, his wife and two children live in Bellevue as they have for the eight years since his return from a tour as a Naval Officer in Vietnam. He is a graduate of U of W with a masters degree in mechanical engineering and a masters degree in economics and is presently employed with a consulting firm. Representative McDonald is active in the King County Municipal League, Bellevue Chamber of Commerce, King County Drug Commission and American Public Works Association.

# REPRESENTATIVES



**McGINNIS, MICHAEL R. (Republican)**

Representative from the 6th District is serving his first term. A native of Spokane, Mike was educated at Eastern Washington University in Political Science. Presently working as owner/manager of McGinnis Independent Paper Co. serving the Inland Empire with printing paper and industrial paper supplies. His wife, Liz, takes an active role in Mike's business, community and political involvements.

**MITCHELL, JAMES B. (JIM) (Republican)**

Representative from the 39th District is serving his first term. He is a self-employed Pharmacist, a graduate of the University of Washington in Pharmacy and a veteran of WW2. He is a founder of the Snohomish County Blood Bank, a director on the Board of Everett's Providence Hospital, the Stillaguamish Senior Citizen Center and a past member of the Washington State Board of Pharmacy. He and his wife Nancy have two sons, Bill and John.



**MONOHON, CAROL (Democrat)**

Representative from the 19th District comprising Grays Harbor and part of Pacific Counties. Born in 1945 in Raymond. Elected in 1976 to the House, appointed to the Senate in 1977. Graduate of Grays Harbor College and U.P.S. with a B.A. in Political Science. Attended U.P.S. Law School. Carol, her husband Robert, their two children, Bryon and Sharron live in Raymond.

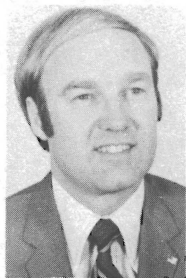
**NELSON, R. P. "DICK" (Democrat)**

Representative from the 32nd District comprising the Ballard, Fremont, Green Lake, Greenwood, Phinney, and Wallingford neighborhoods of Seattle. First elected in 1976, is serving his second term in the House. Born in Seattle. Graduate of the University of Washington (Engineering) and the Massachusetts Institute of Technology. Self-employed technical consultant.



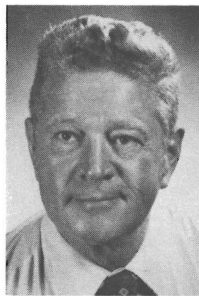
# REPRESENTATIVES

**NELSON, GARY A. (Republican)** Representative from the 21st District of Snohomish County (part) is serving his fourth term. Born in Spokane, received B.S. in Electrical Engineering from W.S.U. and M.S. from U of Wisconsin. Served three years in Air Force as a communications officer. Staff Manager of Special Services Cost Studies with private utility. Past Edmonds City Councilman and planning commission member. His wife, JoAnne, is an educational consultant and author. They have three sons.



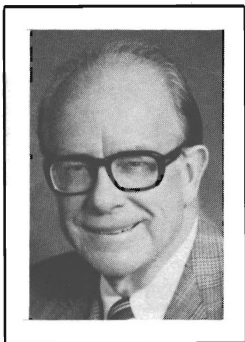
**NEWHOUSE, IRVING (Republican)** Representative from District 15 of Yakima County, is serving his eighth term. Native of the Yakima Valley, graduate of Washington State University with B.S. in Agriculture, operates an irrigated, diversified ranch. He and his wife, Ruth, have six children.

**NISBET, ANDREW (Republican)** Representative from the 24th District comprising Clallam, Jefferson, Mason and part of Thurston Counties, is serving his first term. Has a B.A. in Education from the University of Georgia and an M.A. in Public Law from Columbia University. Entered the Army as a private and retired 33 years later as an Infantry Colonel. He and his wife, Haroldine, have four grown children and two grandchildren.



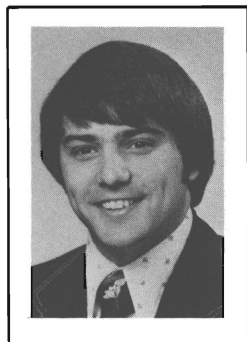
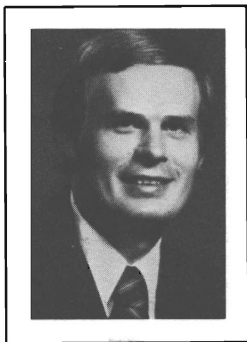
**NORTH, FRANCES C. (Democrat)** Representative from the 47th District of King County, is serving her fourth term. Native to the Renton area, she attended Seattle University. A North Bend Councilwoman for eight years, has been active in the National Secretaries Association, Business and Professional Women, a director of the Sno Valley Development Center Board, a member of Board of Directors Washington Parks Foundation, member Municipal Research Council and Council of State Governments. She and her husband, James M. North, have lived in the Snoqualmie Valley for 32 years.

# REPRESENTATIVES



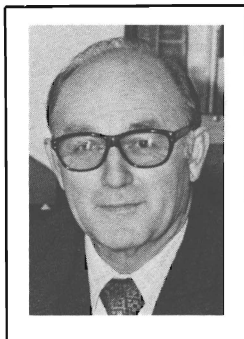
**O'BRIEN, JOHN L., (Democrat)** Representative from the 35th District of King County, is serving his 19th term. Caucus Chairmain in 1951, Minority Floor Leader 1953, Speaker of the House from 1955 to 1962. Minority Leader 1967-1971 and Speaker Pro Tempore 1973-1979. Graduate of business college, attended Western Institute of Professional Accounting and is a CPA. Past president and member of Executive Committee of National Conference of State Legislative Leaders. Member, Eagles, Knights of Columbus, Washington Athletic Club, and Rainier Chamber of Commerce. He and his wife, Mary, have six children.

**OLIVER, CLAUDE (Republican)** Representative from the 8th District comprising Benton and Yakima (part) Counties, serving his second term. Born in 1946 in Yakima. Raised in the Moxee, Yakima County, area. U.S. Army veteran. B.A., Central Washington State College, in political science—business/economics. Bank loan officer—assistant manager, Tri-Cities area. He and his wife, Diane, have one daughter and one son. Serving as Rep. Chairman of House Constitution, Elections and Governmental Ethics Committee as well as on Commerce and Higher Education Committees.



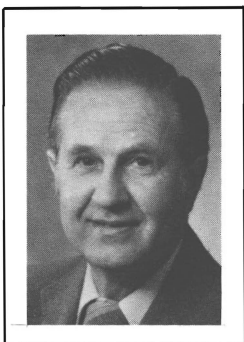
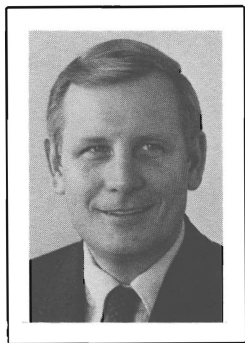
**OWEN, BRAD (Democrat)** Representative from the 24th District comprising Clallam, Jefferson, Mason and part of Thurston Counties, is serving his second term in the House. Owen is a 28-year-old businessman and a member of the Shelton City Council. He and his wife Nancy have four children, including an adopted Korean son. Owen serves on the Natural Resources, Commerce and Institutions Committees.

**PATTERSON, E. G. "PAT" (Republican)** Representative from the Ninth District, serving his fourth term. Republican Whip. A native of Pullman, Washington, Army officer veteran of WWII. Graduate of Washington State University, B.A. Political Science, 1946. Served as State Adjutant Quartermaster, VFW, retired after 26 years as Director of WSU's Alumni Relations, Scholarship and Development Fund, Graduate Records and Legislative Consultant. Member, Pullman Chamber of Commerce and VFW. He and his wife, Maxine, have seven children.



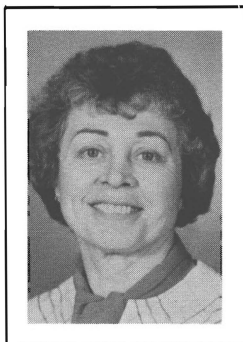
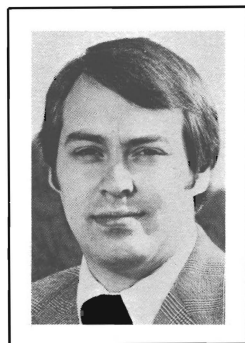
# REPRESENTATIVES

**POLK, WILLIAM M. (Republican)** Chairman of the Republican Caucus is from the 41st District in King County, serving his fifth term. Born in 1935 in Cieburne, Texas, raised in Haddonfield, New Jersey, a graduate of Cornell University with a Bachelor of Architecture. He is a principal in the architectural firm Waldron, Pomeroy, Polk and Smith, a member of the American Institute of Architects, College Club, National Director, American Legislative Exchange Committee, Ryther Child Center and is Director of Cornish School for Allied Arts. He and his wife, Karla, and three children, Lucy, Beth and Andy, live on Mercer Island.



**PRUITT, PAUL (Democrat)** Representative from the 34th District, King County serving his second term. Born in Shelton, Nebraska he attended the University of Puget Sound and Yale Divinity School. He is President of the Washington Full Employment Action Council and a member of the Boards of the West Seattle Community Council and the Highline-West Seattle Mental Health Center. He and his wife Mary Margaret and their four children, live in West Seattle.

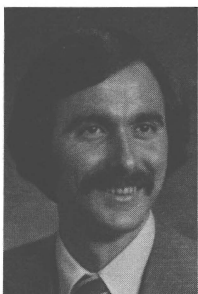
**ROHRBACH, ERIC J. (Republican)** Representative of the 33rd District including Des Moines, Normandy Park, and parts of Burien, Kent, and Tukwila. Appointed 1977 and now serving his first elective term. Small businessman. Born in 1951 in Spokane. Civil Engineering graduate of Washington State University.



**ROSBACH, WILMA (Republican)** Representative from the 20th District is serving her first term. For the past 21 years, she and her husband, Chuck, have owned and operated Children's Apparel Shop in Chehalis. A director of Lewis Federal Savings and Loan and active in community and business affairs. She and her husband have four grown children.

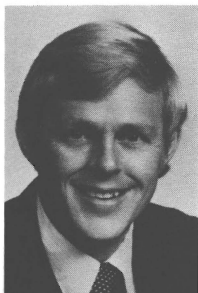
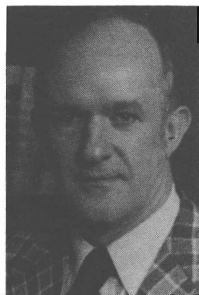


# REPRESENTATIVES



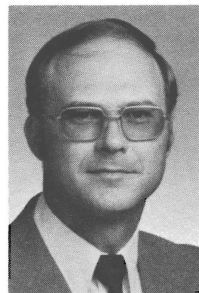
**SALATINO, JAMES E. (Democrat)** Representative from the 27th District in Pierce County. Elected in 1976, is now serving his second term in the House. He currently holds the title of Asst. Floor Leader. Born in 1949 in Tacoma. Graduate of the University of Puget Sound. Currently a teacher at Stadium High School in Tacoma.

**SANDERS, PAUL (Republican)** Representative from the 48th District, King County. Serving second term. Active in Bellevue community 19 years; community clubs, PTA, Forward Thrust, Helping Hands for the Disabled, Little League, YMCA, Scouts, Kiwanis, Chamber of Commerce, Church of Resurrection. Boeing employee 29 years. Sponsor Initiative 70. Member of Revenue, Commerce and Ecology Committees. He and his wife, Helen, have four children, Doug, Greg, Gayle, Judy.



**SCHMITTEN, ROLLAND A. "ROLLIE" (Republican)** Representative from the 12th District is serving his second term. Born in Wenatchee in 1944. A graduate of Washington State University in Forestry, has served as a U.S. Marine Corps officer in Vietnam, on Cashmere City Council and Chelan County Port Commission. Currently owner/manager of Schmitt Lumber Company. He and his wife, Barbara, have three children, Jennifer, Heidi, and Rollie, Jr.

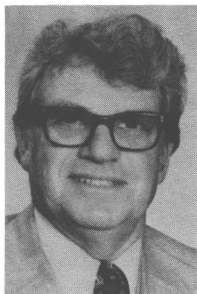
**SCOTT, GARY H. (Democrat)** Representative from the 39th District, Snohomish County. Born in 1942, residing in Snohomish County for 35 years. Attended Everett Community College and Western Washington State College. He is now employed by the Snohomish County P.U.D. He and his wife, Kathy have two children, Stacey and Kari



# REPRESENTATIVES

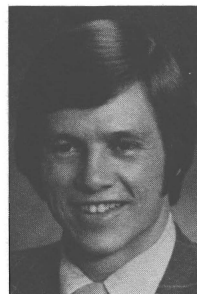
**SHERMAN, MARION KYLE (Democrat)**

Representative from the 47th District is serving her third term. Democratic Caucus Vice Chairman, Board member Maple Valley Senior Center, Maple Valley Community Center, Exec. Board Green River Comm. College Foundation, League of Women's Voters, Maple Valley Chamber of Commerce, graduate of U. of W., husband Len, engineer. Parents of two children.

**SMITH, CURTIS P. "CURT" (Republican)**

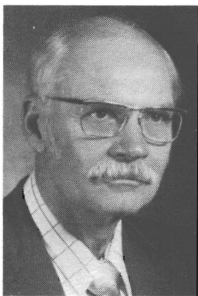
Representative from the 13th District comprised of Kittitas, most of Grant and Part of Yakima Counties, serving his first term. Born in Nebraska, attended University of Nebraska, Veteran of WWII, farmer and dairyman since 1955 in the Columbia Basin. Director, sixteen years, Quincy Columbia Basin Irrigation District. Member of United Church of Christ. He and wife Lucille have two children, Greg and Sherri, both University graduates.

**SMITH, RICK (Democrat)** Representative from the 23rd District of Kitsap County is serving his fourth term. Born in 1942 in Portland, Oregon. A Silverdale attorney, served four years as Legislative Assistant to Congressman Floyd V. Hicks. Attended Olympic Community College in Bremerton and graduated from the University of Washington with a B.A. in political science. He received a law degree from the Amer. Univer. in Wash. D.C. He and his wife, Janice, their daughter, Heather and son, Erin, live in Silverdale.



**SOMMERS, HELEN (Democrat)** Representative from the 36th District in Seattle, serving her fourth term. Earned B.A. and M.A. in economics from University of Washington. Employed by King County Council. Member, League of Women Voters and National Organization for Women. Board member, Easter Seal Society. Foundation member, Pacific Science Center.

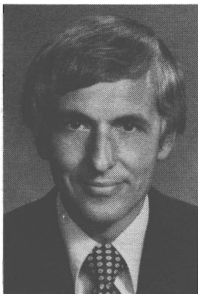
# REPRESENTATIVES



**SPRAGUE, WALTER W. (Republican)**

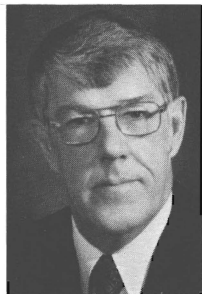
Representative from the 21st District is serving his first term. Born in Tacoma in 1918, he is a commercial landscaping contractor. He attended Pacific Lutheran University and served in the U.S. Navy in World War II, on the Lynnwood City Council and was Chairman of the City's Park Board. He and his wife, Fern, have two children and three grandchildren.

**STRUTHERS, GENE (Republican)** Representative from the 16th District comprising Walla Walla, Franklin and a part of Columbia Counties, serving his second term. Born in 1924 in Walla Walla where he has resided continuously with the exception of three years in the army during World War II. A retired businessman, he and his wife Bonny have six grown children.



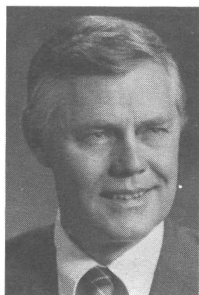
**TALLER, JOE A. (Republican)** Representative from the 36th District of King County, comprising the Queen Anne and Magnolia communities plus Downtown Seattle. Republican Chairman of State Government Committee, serving his second term in the House and serves as assistant Republican Whip. Has served on the Appropriations, Education, Insurance, Legislative Evaluation and Accountability Program (LEAP) and State Government Committees. Seattle native, born in 1933, Graduate School at the University of Washington in Business Administration. Employed by the Boeing Company as an Industrial Relations Manager. He and his wife Robin have lived in the 36th District for 28 years and have three children, Liz, Joe Jr., and Barbara.

**TAYLOR, REN (Republican)** Representative from the 4th District serving his first term. A native of Washington, born in Tacoma. Taylor serves as Superintendent of the West Valley School District of Spokane. A veteran of World War II. A graduate of the University of Washington and Columbia University. He is a member of the Board of Trustees of the Spokane Valley General Hospital, Spokane Valley Chamber of Commerce, and Rotary Club. He and his wife, Virginia, have three sons, Ross, Mark, and Paul.



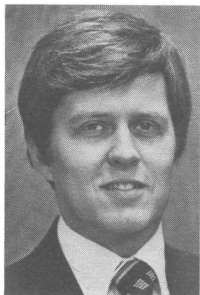
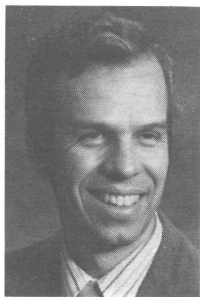
# REPRESENTATIVES

**TEUTSCH, DELORES E. (Republican)** A native of Washington, serving her first term as Representative from the 45th Legislative District. Has served as Chairman of the Board of Trustees of Community College District VIII, Bellevue Community College, President of the Washington State Trustees Association of Community Colleges and Chairman of the King County Northshore Communities Plan Committee. Is a member of the Social and Health Services, Local Government and Higher Education Committees. She and her husband, John, have three children, Terri, Jay and Jill.



**THOMPSON, ALAN (Democrat)** Representative from the 18th District comprising Cowlitz and Clark Counties, is serving his eighth term. Born in 1927 in Geneva, Iowa. Served in the Navy. Attended University of Nebraska and University of California, Berkeley, and has a B.A. degree. Also attended Rutgers University Eagleton Institute of Politics Fellowship Program. Member of Harry S. Truman Scholarship Foundation Screening Committee. He is the publisher of three weekly publications: the Cowlitz County Advocate, the Lewis County News, and the Cowlitz Valley Sternwheeler. He and his wife, Barbara, have four sons.

**TILLY, EARL F. (Republican)** Representative from the 12th District is serving his fourth term and is the Republican Organization Leader. He is 44 years old and a Wenatchee businessman. President of Tilly Equipment Inc., a farm and orchard equipment dealer serving North Central Washington. A graduate of the University of Washington in Business Administration. Member of the Wenatchee Rotary Club, the Wenatchee Valley College Foundation, and Wenatchee Grace Lutheran Church. He and his wife, Barbara, have three children, Kristen, Bart, and Shannon.



**TUPPER, STEVE (Republican)** Representative from the 44th District comprising northwest Seattle and Shoreline, is serving his first term. A graduate of Principia College with a BA in Political Science, he is a former Army officer and Vietnam veteran, and is employed as an account manager for Kraft Smith Advertising and Public Relations. He and wife Diane live in Seattle where he is a founding board member of the Broadview Community Council, and serves on the board of the Shoreline YMCA and Ballard Rotary.

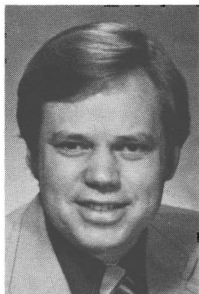
# REPRESENTATIVES



**VALLE, GEORGETTE (Democrat)** Representative of the 31st Legislative District of King County. Born in Blue Earth, Minnesota. Graduate of University of Minnesota with a B.S. degree in Occupational Therapy. Currently serving her fifth term in the legislature. She and her husband, Odd, a dentist, have two children, Peter and Christine.

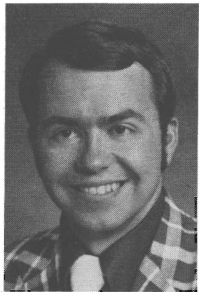
**VAN DYKEN, ROGER L. (Republican)**

Representative from the 42nd District in Whatcom County, serving his first term. Self-employed as farmer and organization manager. Has served in Air Force in Viet Nam and Europe, currently major in Air Force Reserve. Born in 1945. He and his wife Marlene have two children, Aminta and Justin.



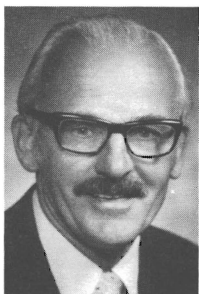
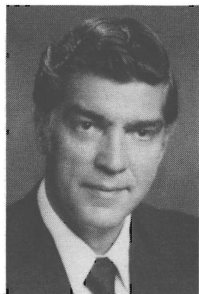
**VROOMAN, JERRY L. (Democrat)** Representative from the 40th District comprising San Juan, Skagit, and the eastern part of Whatcom Counties. Born in 1941 in Portland, Oregon. Graduate of Skagit Valley Community College and Western Washington State College with a B.A. in Political Science. He has two daughters, Angela and Michelle.

**WALK, GEORGE W. (Democrat)** Representative from the 25th District which includes north central Pierce and part of King Counties. Born in 1949 in Puyallup, attended Puyallup Public Schools and earned B.A. and M.A. degrees from Western Washington State College. He and his wife, Jill, have a son. Serving his second term.



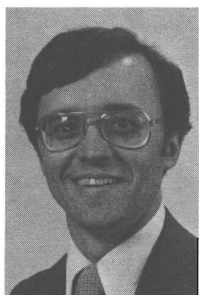
# REPRESENTATIVES

**WARNKE, FRANK J. (Democrat)** Representative from the 30th District, South King County. Served in the 1965-67 and 1973-75, 75-77, 77-79 sessions. Born in Havre, Montana in 1933. Studied Political Science at Central Washington State College and the University of Washington. Employed as Executive Director of the Public School Employees of Washington. Married and has two children.



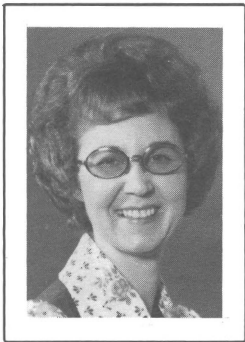
**WHITESIDE, JIM (Republican)** from the Fourteenth District of Yakima. Native of Washington State, born in Tacoma, raised in Seattle, represents Yakima County. Attended U. of W. and obtained B.A. degree from W.S.U. after Naval Service. He has operated a cleaning business in Yakima for 25 years. He and his wife, Shirley, have five children.

**WILLIAMS, BOB (Republican)** Representative from the 18th District comprising Cowlitz and Clark Counties. He is serving his first term in the House. Born in 1942 in Mt. Carmel, Pa. Graduate of Penn State with a BS degree. Served in the U.S. Army. Certified Public Accountant. He and his wife, Jane, have three sons. Member of the Longview Rotary Club, Toastmasters, and Calvary Community Church.



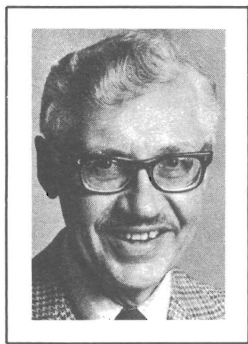
**WILSON, SIMEON R. "SIM" (Republican)** Representative from the 10th District of northwest Snohomish County and Island County, elected in 1972 to his first term, re-elected, 1974, 1976, 1978. Born in Hood River, Oregon, in 1927. Attended Everett Community College, B.A., Washington State University, M.F.A., University of Washington. Served in the U.S. Navy 1945-46, 1951-54. Publisher of the *Marysville Globe* and *Arlington Times*. He and his wife, Betty, have two children.

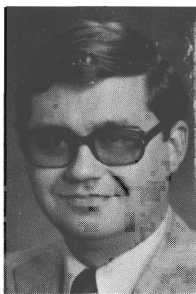
# REPRESENTATIVES



**WINSLEY, SHIRLEY J. (Republican)** representing the 28th District, Pierce County, comprising communities of Lakewood, University Place, Fircrest, Steilacoom, Tillicum, and Day Island. Appointed to the House in 1974, now serving her second elective term. Graduate, Tacoma Community College, Pacific Lutheran University. Member, Board of Governors, Fort Steilacoom Community College Foundation; Board Member, Legislative Chairman, Lakewood Area Chamber of Commerce; Member, Fircrest Planning Commission; League of Women Voters; Administrative Women in Education. She and her husband, Gordon, have a married son and daughter.

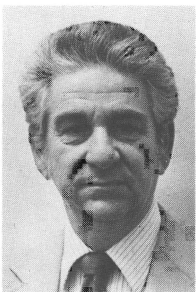
**ZIMMERMAN, HAROLD S. (HAL) (Republican)** Representative from the 17th District (Klickitat, Skamania, and part of Clark Counties) is serving his seventh term. Born in 1923 in Valley City, North Dakota. Graduate, University of Washington with a B.A. degree, is Editor-Publisher of *Post Publications, Inc.*, publishers of *Camas-Washougal Post-Record*, *The Community Post*, Vancouver, and the *Hazel Dell Post*, Vancouver. Served in the Air Force in World War II. Past President, Washington Newspaper Publishers Association. Member, Sigma Chi, United Methodist Church, Kiwanis, Grange. He and his wife, Judy, have three children, Karen, Steve and Julie.





**FOSTER, DEAN R. (Democrat)** Chief Clerk of the House of Representatives serving his fourth term. Worked as an employee in the Senate from 1959-1965 and in the House in 1972. Born in 1941 in Yakima. Attended Western Washington State College and graduated from University with a degree in Political Science. Served in the United States Air Force as an Intelligence Officer. He has three sons, David, Mike and Scott.

**YOUNG, ROSS (Democrat)** Sergeant at Arms of the House of Representatives serving his third term. Worked as an employee in the Senate 1971-72 and in the House 1973-1974. Born in 1929 in Cle Elum. Attended Central Washington State College. Served 20 years in the United States Air Force, retiring as a Senior Master Sergeant in 1969. He and his wife, Mary, have three of their seven children living with them in Olympia.



**CHIECHI, VITO T. (Republican).** Chief Clerk of the House of Representatives. Public Affairs Staff Executive and Consultant with over 30 years experience in the public and private sectors in local-, state- and federal government relations. Former Executive Assistant to the Speaker of the House, 1973-76. Born in 1925 in Seattle, hold a degree in Finance from Seattle University. Vito and his wife Delores have nine children and live in Olympia.

**LAPHAM, HARRY H. (Republican)** Sergeant at Arms of the House of Representatives. Served as Assistant Sergeant of Arms of the House of Representatives since 1967. Born in Ocala, Florida in 1907. Attended University of Florida. Spent 30 years in the U.S. Army, 9 years in Japan, France & Korea, retiring as a Major in 1963. Did investigative work for several years for The Department of Defense after retirement. He and his wife, Grace, live in Olympia.

