

Transportation Impacts of Lower Snake River Dams Study

Joint Transportation Committee Meeting

Dike Ahanotu, Jacobs, Technical Lead

June 18, 2024



iStock
Credit: FrankRamspott

Agenda Topics



- Introduction to Study, Phases, and Consulting Team
- Community Engagement
- Technical Analysis
- Key Deliverables

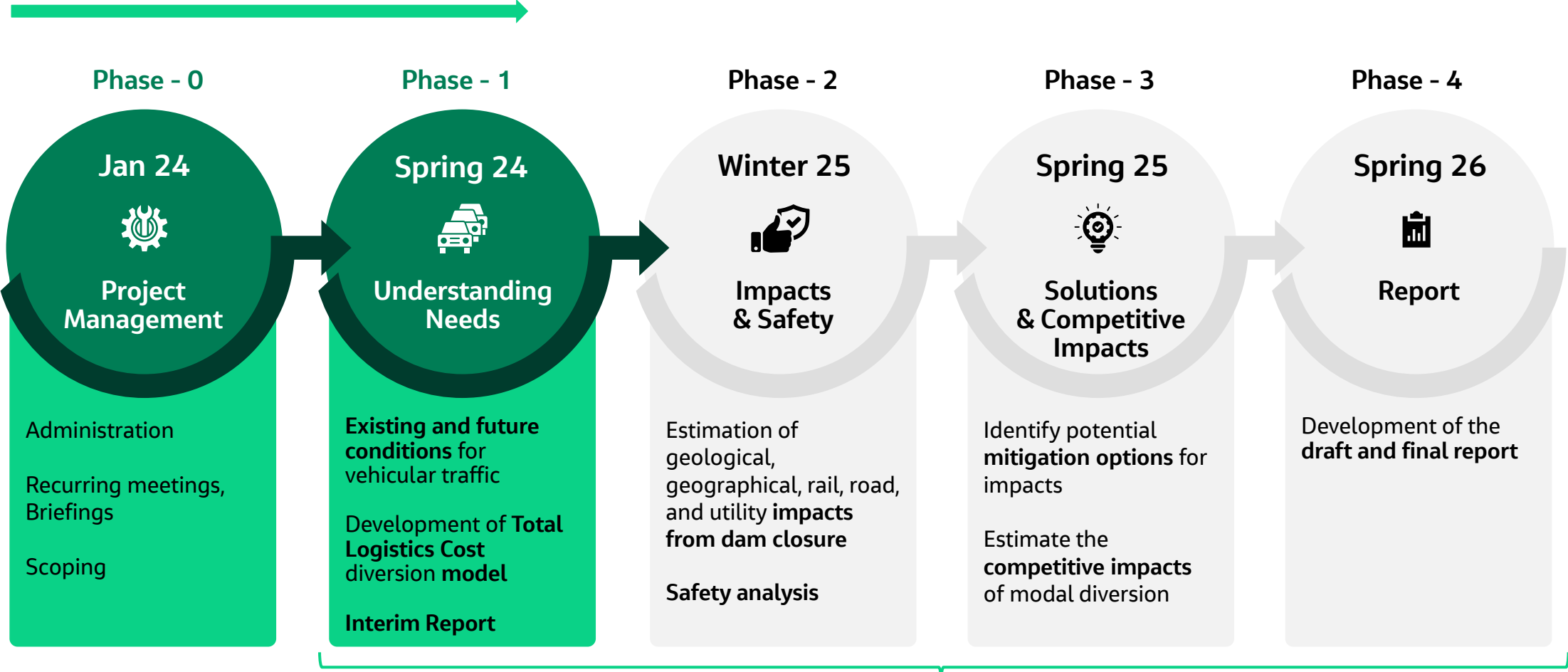
Project Purpose

Lower Snake River Transportation Study

- Study to understand the transportation impact of shifting barge traffic on the Lower Snake River to other modes
- Technical analysis and engagement to understand the impacts, including
 - Truck and rail traffic
 - Geological
 - Safety
 - Emissions
 - Competitiveness



Overview of Study Phases



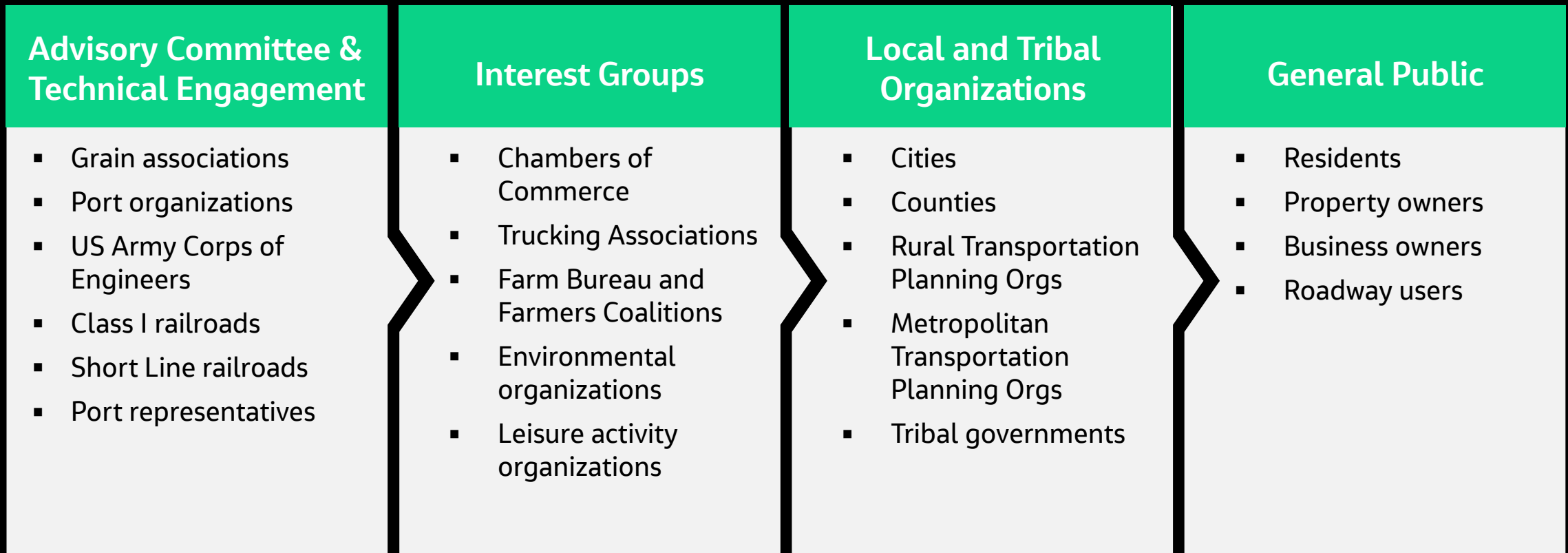
Community Engagement

Consulting Team

Jacobs



Understanding Needs – Community Engagement



Over 60 individual contacts have been identified across these four categories

Understanding Needs – Technical Analysis

Existing Goods Movement Conditions (Barge Traffic Analysis)

- Literature review
- Analyze recent and historical barge movement data
- Assemble available information on origins, destinations, and first/last mile information
- Consult with industry representatives

Existing Train and Truck Volumes

- Collect existing vehicle classification data
- Assemble existing FRA train volume data
- Consult with railroads on volumes, train capacity, and routes for diverted barge traffic

Rail and Vehicular Volume Changes (Total Logistics Cost Model)

- Determine mode split of diverted freight traffic
- Determine routes and volumes of new truck/rail traffic
- Estimate future volumes and sensitivity to inputs
- Estimate environmental impact of new traffic levels

Analysis of barge, rail, and highway traffic is underway to understand existing conditions and input to the diversion model

Key Deliverables



Quarterly Reports

- Submitted to state legislature
- Progress across each of the phases and upcoming work to be conducted



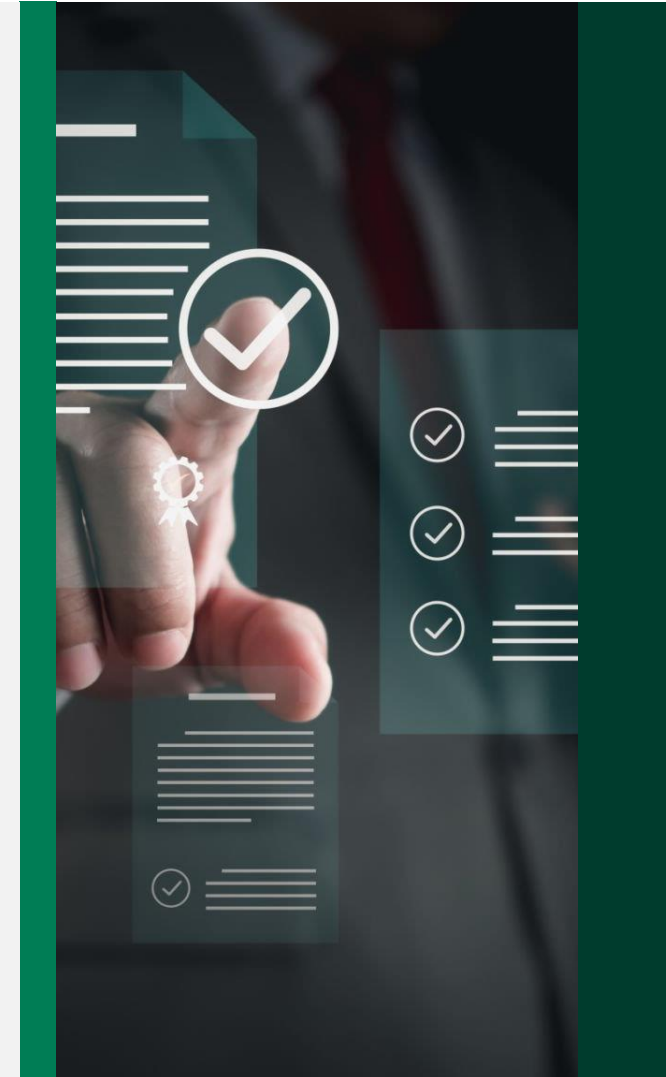
Interim Report December 2024

- Existing movement of freight and how it might change
- State of existing transportation system and ability to handle changes
- Community engagement efforts



Final Report (2026)

- Summarizes the data, analysis, methodologies, findings, and engagement used for the full study



Contact

Consultant Team Contact

Dike Ahanotu, Jacobs, Technical Lead
Transportation Impacts of LSRD Removal Study
Dike.Ahanotu@jacobs.com

Washington DOT Contact

Jim Mahugh, WSDOT, Study Lead
Transportation Impacts of LSRD Removal Study
MahughJ@wsdot.wa.gov

Thank You

