

Only

A

PICTORIAL

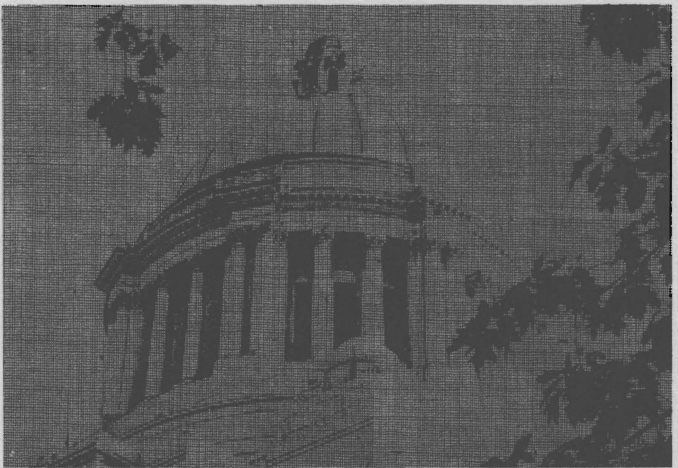
• **GUIDE** •

TO THE

WASHINGTON

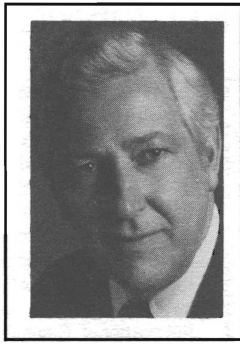
S T A T E

LEGISLATURE



1982

FORTY-SEVENTH SESSION



John Spellman Governor

John Dennis Spellman, the 18th Governor of Washington State, was born in Seattle December 29, 1926, and has been a life-long resident of King County.

He attended grade and high school in Seattle and graduated from Seattle University as class Valedictorian in 1949 with a BSS in political science and history. He also graduated from Georgetown University Law School, Washington, D.C., with a JD degree in 1953. He was admitted to the Washington State Bar in 1954.

He then practiced law in Seattle for 13 years before assuming public office. He first served as King County Commissioner—1967 to 1969.

Mr. Spellman was elected as the first King County Executive in 1969 under a voter-approved home rule charter. He was reelected in 1973 and again in 1977. Until his election as Governor, he is the only Executive that King County has had.

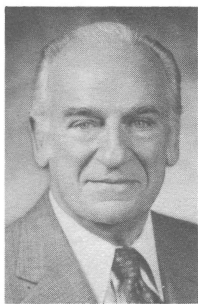
Mr. Spellman has been active in the National Association of Counties, most recently serving as First Vice President. He also has been active in several NACO special committees and was chairman of the National Agricultural Lands Project Advisory Committee. Among the other committees on which he served were Crime and Public Safety, Land Use and Growth Management, and aging programs.

In addition to his elected offices, he has served many public and civic groups. He is past President of the Puget Sound Council of Governments, served as Chairman of the King-Snohomish Manpower Consortium and is a past Vice Chairman of the U.S. Coastal Zone Management Advisory Committee.

He also is a past Chairman of the Seattle Civil Service Commission and the King County Library Board.

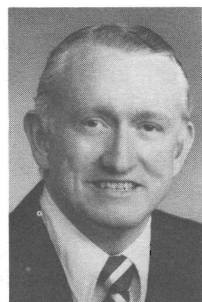
He is a Navy veteran of World War II and served in the Pacific theatre. His family includes his wife, Lois, and their six children.

ELECTED OFFICIALS



JOHN A. CHERBERG, Lieutenant Governor. (Democrat) Presently serving his seventh term. Serves as President of the Senate, Ex-officio Chairman of Senate Rules Committee, member of State Finance Committee, Capitol Committee, Washington State Patrol Retirement Board, Health Care Facilities Authority, Energy Fair Commission '83; Chairman of the Washington State Data Processing Authority, and the Joint Legislative Committee on International Business & Tourism. Formerly, television executive, head football coach U. of W., and Seattle high school teacher and football coach.

RALPH MUNRO, Secretary of State. (Republican) Serving his first term. Native of Washington, a lifelong resident of Bainbridge Island where he lives with his wife and son. Active member of the Bethel Lutheran Church. Graduate of Western Washington University. Served as Governor Dan Evans Special Assistant, was Washington State's first Volunteer Coordinator. Active in many community groups, environmental and historic preservation. Director of Guardianship, Foundation for the Handicapped. Founder of several handicapped organizations. Small businessman, owns and operates a tree farm in the Olympia area where he is a member of the Olympia Highlanders Bagpipe Band.



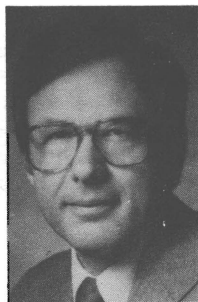
ROBERT S. O'BRIEN, State Treasurer. (Democrat) Born, raised and educated in the State of Washington. Elected to nine consecutive four-year terms as a public funds treasurer. Elected Grant County Treasurer four times, and elected State Treasurer five times. Past President Washington State Association of Elected County Officials; past President Western State Treasurers' Conference; past President National Association of State Auditors, Comptrollers and Treasurers.

ROBERT V. GRAHAM (BOB), State Auditor. (Democrat) is a native Washingtonian and became the State's seventh auditor in 1965, and has been elected to a fifth term. Prior to his election he served in every administrative post in the Office of State Auditor. He is a Certified Internal Auditor, and active member of many professional organizations. He and his wife, Lloydine, have five children.



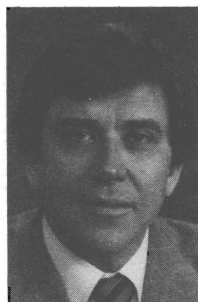
ELECTED OFFICIALS

KEN EIKENBERRY, Attorney General. (Republican) Member of the Criminal Justice Training Commission and the Corrections Standards Board. Co-Chairman of Alderbrook Conference. Former Special Agent of the F.B.I., Deputy Prosecutor for King County and three-term state legislator. Republican Party State Chairman from 1977 to 1980. Graduate of WSU and U of W. Ken and his wife, Beverly, currently reside in Olympia.



DR. FRANK B. BROUILLET, Superintendent of Public Instruction. (Non-partisan Office) Elected to Office of State Superintendent in 1972. Former member of the House of Representatives, serving eight consecutive terms. A native of Puyallup, where he resides with his wife, Marge', and their two sons.

BRIAN J. BOYLE, Commissioner of Public Lands. (Republican) Serving his first term. Administers the Department of Natural Resources. Formerly executive director, Pacific Northwest Innovation Group and chairman of the board, Cowlitz County Commissioners. Worked as supervisor and engineer in the metals industry, and earlier employed as a hard rock miner. Active in Washington State Association of Counties, various state boards and commissions, the Cowlitz-Wahkiakum Council of Governments and Alternatives for Washington. MBA, University of Portland, B.S., Montana School of Mines. A Washington resident for 13 years.



RICHARD G. (DICK) MARQUARDT, Insurance Commissioner. (Republican) Raised in Western Washington, former Washington State Senator. Executive in private enterprise and public life.

TABLE OF CONTENTS

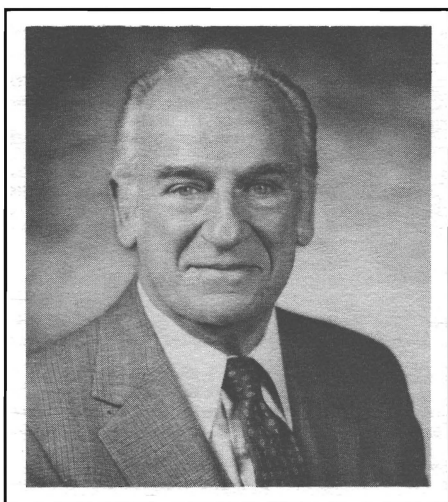
State Elected Officials.....	2
Introduction.....	4
President of Senate.....	5
Senate Roster.....	6
Senate Biographies.....	7
Speaker of the House.....	21
House of Representatives Roster.....	22
House of Representatives Biographies.....	24

INTRODUCTION

This "47th Session Pictorial Directory of the Washington State Legislature" contains pictures of and biographical material on state elected officials and members of the Senate and House of Representatives. This Directory is prepared by the Senate and the House of Representatives to assist those interested in becoming better acquainted with their legislators and the legislative processes in our state.

These are the men and women who have been elected to serve the people both as the heads of our government and as our voice in providing our state with laws which benefit all.

SENATORS OF THE STATE OF WASHINGTON



JOHN A. CHERBERG
Lieutenant Governor
President of the Senate

John Andrew Cherberg (Democrat) is serving his fifteenth session as President of the Senate and Ex-officio Chairman of the Senate Rules Committee. He was first elected Lieutenant Governor in 1956, and re-elected in 1960, 1964, 1968, 1972, 1976, and 1980. Born in 1910 in Pensacola, Florida, he earned a life teaching diploma from the University of Washington in 1934. Formerly a teacher, he was head football coach at the University of Washington prior to his election. He and his wife, Betty, have three children.

ROSTER OF MEMBERS

WASHINGTON STATE SENATE

49 Members—
27 Democrats, 22 Republicans

NAME	PARTY	DIST.	MAILING ADDRESS
CHERBERG, John A. (D)		Pres. of Sen. 304	Legislative Building, Olympia. 98504
BAUER, Albert	D	49	13611 N.E. 20th Avenue, Vancouver, 98665
BENITZ, Max E.	R	8	Route 2, Box 2521, Prosser, 99350
BLUECHEL, Alan	R	45	9901 N.E. 124th Street, #505, Kirkland, 98033
BOTTIGER, R. Ted	D	2	8849 Pacific Avenue, Tacoma, 98444
CHARNLEY, Donn	D	1/44	19344-11th Avenue N.W., Seattle, 98177
CLARKE, George W.	R	41	1111 Hoge Building, Seattle, 98104
CONNER, Paul	D	24	195 Pinnell Road, Sequim, 98382
CRASWELL, Ellen	R	23	8066 Chico Way N.W., Bremerton, 98310
DECCIO, Alex A.	R	14	P.O. Box 1343, Yakima, 98907
FLEMING, George	D	37	1100 Lake Washington Blvd. So., Seattle, 98144
FULLER, W. H. "Bill"	R	20	330 Brockway, Chehalis, 98532
GALLAGHAN, Art	R	26	3911-55th Street Ct. N.W., Gig Harbor, 98335
GASPARD, Marcus	D	25	8220-191st Ave. E., Sumner, 98390
GOLTZ, H. A. "Barney"	D	42	3003 Vallette Street, Bellingham, 98225
GOULD, Susan E.	R	21	19225-92nd West, Edmonds, 98020
GUESS, Sam C.	R	6	W. 408-33rd Avenue, Spokane, 99203
HALEY, Ted	R	28	5800-100th Street S.W. #30, Tacoma, 98499
HANSEN, Frank "Tub"	D	13	Star Route, Box 73, Moses Lake, 98837
HAYNER, Jeannette	R	16	Box 454, Walla Walla, 99362
HEMSTAD, Dick	R	22	130 North Sherman, Olympia 98502
HUGHES, Jerry M.	D	5	N. 3504 Milton, Spokane, 99205
HURLEY, Margaret	D	3	East 730 Boone, Spokane, 99202
JONES, John D.	R	48	18 Bridlewood Circle, Kirkland, 98033
KISKADDON, Bill	R	1	4404-242nd Street S.W., Mountlake Terrace, 98043
LEE, Eleanor	R	33	P.O. Box 66274, Burien, 98166
LYSEN, King	D	34/31	12864 Shorecrest Drive S.W., Seattle, 98146
McCASLIN, Bob	R	4	12719 E. 23rd, Spokane, 99216
McDERMOTT, James A.	D	43	1650-22nd Avenue E., Seattle, 98112
METCALF, Jack	R	10	3273 East Saratoga Road, Langley, 98260
MOORE, Ray	D	36	1722 Bigelow North, Seattle, 98109
NEWHOUSE, Irving	R	15	Route 1, Box 130, Mabton, 98935
PATTERSON, E. G. "Pat"	R	9	N.E. 400 Campus, Pullman, 99163
PETERSON, Lowell	D	10/40	Box 249, Concrete, 98237
PULLEN, Kent	R	47	22844-172nd S.E., Kent, 98031
QUIGG, J. T.	R	19	613 North K Street, Aberdeen, 98520
RASMUSSEN, A. L. "Slim"	D	29	5415 A Street, Tacoma, 98408
RIDDER, Ruthe	D	11/35	5809 South Roxbury, Seattle, 98118
SCOTT, George W.	R	46	8821 Paisley Drive N.E., Seattle, 98115
SELLAR, George L.	R	12	1324 Terrace Drive, East Wenatchee, 98801
SHINPOCH, A. N. "Bud"	D	11	361 Maple Avenue N.W., Renton, 98055
TALLEY, Don L.	D	18	4460 Pleasant Hill Road, Kelso, 98626
TALMADGE, Phil	D	34	4006-53rd S.W., Seattle, 98116
VOGNILD, Larry L.	D	38	3201 Wetmore, Everett, 98201
von REICHBAUER, Peter	R	30	401-A Legislative Building, Olympia, 98504
WILLIAMS, Al	D	32	4801 Fremont North, Seattle, 98103
WILSON, Bruce A.	D	7	P.O. Box F, Omak, 98841
WOJAHN, R. Lorraine	D	27	3592 East K Street, Tacoma, 98404
WOODY, Dianne	D	39	24328-47th S.E., Woodinville, 98072
ZIMMERMAN, Hal	R	17	1432 N.E. 6th Avenue, Camas, 98607

SENATORS

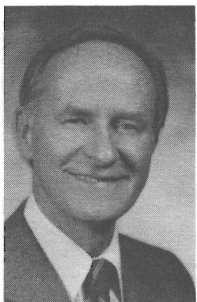
BAUER, ALBERT (Democrat) Senator from the 49th District of Clark County, is serving his first term. Served as Representative from 1971 through 1980. Born in Lewistown, Montana in 1928. Graduate Portland State College and Oregon State College with Masters in Education and minor in Political Science. Past President Community Club, PTA, Vancouver Education Association. Member: Kiwanis, Grange, American Legion and Salmon Creek Methodist Church. He is currently self employed in agriculture. He and his wife, Patricia, have three children: Sue, Jim and Nancy.



BENITZ, MAX E. (Republican) Senator from the 8th District of Benton County, is serving his second term in the Senate and has served three sessions in the House of Representatives. Born in Wathena, Kansas. He is self-employed in agri-business. Past-president of the Washington State Farm Bureau Federation, past school board member, and former member of the board of directors of the Benton-Franklin County Fair. He and his wife, Marie, have five children.



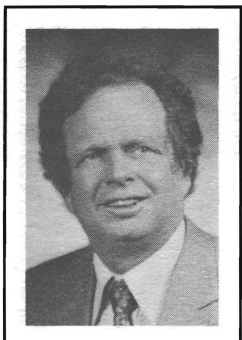
BLUECHEL, ALAN (Republican) Majority Whip. Senator from the 45th District of King County, is serving his sixth session in the Senate and has served four terms in the House of Representatives. Born in 1924 in Edmonton, Alberta, Canada. Received a B.A.Sc in electrical engineering, and a B.A. in General Studies from the University of British Columbia. Chairman, State Environmental Policy Commission, former Vice-Chairman of Washington Land Use Planning Commission. He is President of Loctwall Corporation. Wife, Jeanne, two sons, Gordon and Turner.



BOTTIGER, R. TED (Democrat) Democratic Leader. Senator from the 2nd District comprising part of Pierce and Thurston Counties, is serving his seventh session in the Senate and has served four terms in the House of Representatives. Born in 1932 in Tacoma. Graduate from University of Puget Sound with a B.A. degree and the University of Washington Law School. He is an attorney practicing in Tacoma. He and his wife, Darlene, have two children.

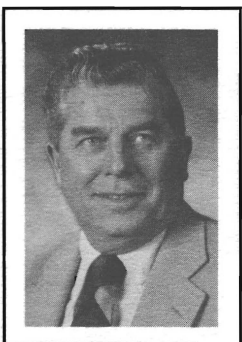
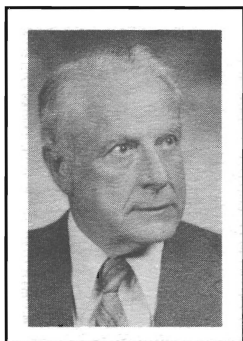


SENATORS



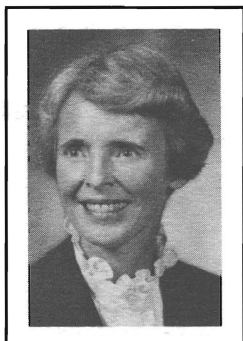
CHARNLEY, DONN (Democrat) Elected from the old 44th District and now living in the 1st District. He is serving his first term. He served ten years in the House of Representatives where he was Majority Whip, Assistant Majority Floor Leader and Chairperson of Local Government Committee. Donn has been a professor of Geology at Shoreline Community College since 1966. He serves on the Boards of Nature Conservancy, Mental Health North and N.W. Kidney Center. Member of the Richmond Beach Community Council and the Geological Society of America. Donn is 52 and has five adult children.

CLARKE, GEORGE W. (Republican) Republican Floor Leader. Senator from the 41st District of King County, served two sessions in the House of Representatives and is serving his seventh session in the Senate. Born in Perry, Iowa, he is an attorney. Served as a naval officer in World War II. Served 20 years, Mercer Island School Board. Member, Seattle Chamber of Commerce and Rotary. He has three children.



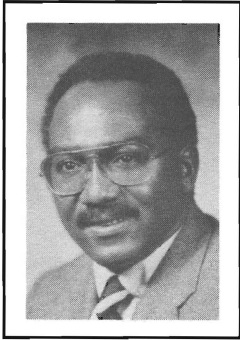
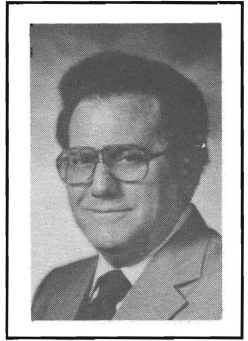
CONNER, PAUL H. (Democrat) Senator from the 24th District comprising Clallam, Mason, Jefferson and part of Thurston County. Appointed to the Senate in 1957, served ten terms in the House of Representatives, elected to the Senate in 1977. Born in 1925 in Port Angeles. Attended Port Angeles Business College, Western Washington State College and University of Washington. He and his wife, Thelma, have five children.

CRASWELL, ELLEN (Republican) Senator from the 23rd District, Kitsap County, serving her first term in the Senate. Born in Seattle; raised in Kitsap County. Attended the University of Washington. Worked in Medical Technology and Speech Therapy, and was co-owner of an art shop. Served two terms in the House of Representatives where she co-chaired the Revenue and Taxation Committee. She and her husband, Bruce, have four grown children.



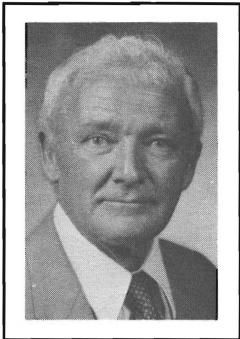
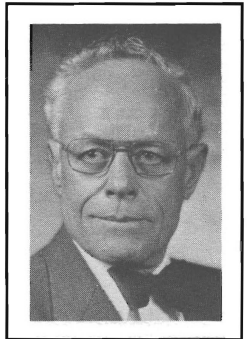
SENATORS

DECCIO, ALEX A. (Republican) Senator from the 14th District, comprising Yakima, Selah and part of Yakima County. Served three terms in the House of Representatives holding the position of Assistant Floor Leader. Born in Washington. Insurance Broker by profession. Long active in civic, community, public and political affairs before being elected to the legislature in 1974. Alex and his wife, Lucille, have seven children.



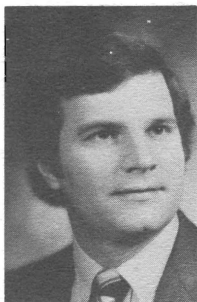
FLEMING, GEORGE (Democrat) Caucus Chairman. Senator 37th District, King County. Served one session in House, serving seventh session in Senate. Born in 1938 in Dallas. Graduate of U of W with B.A. in Business Administration. Member of Rose Bowl teams in 1960 and 1961. Economic Development Manager, Pacific NW Bell. Member: St. Urban, Racial, Rural Disadvantaged Committee, Randolph Carter Center; Pacific NW Travel Assn.; Economic Development Executives of Washington. He and his wife, Tina, have two daughters, Sonja and Yemi.

FULLER, WILLIAM H. (Bill) (Republican) First elected in 1976 as State Representative in the 20th District, made up of Lewis, Wahkiakum and part of Cowlitz, Thurston and Pacific Counties. In 1980 was elected to the Senate. Born at Sandpoint, Idaho, 1913. Resident of Washington since 1930. Bill is President of the 125 employee firm founded by him and his brother in 1941. He attended UPS, served in the U.S. Navy for 4 years in WW II; member of Chamber of Commerce (Past President); Rotary Club (Past President); Industrial Commission; Mason; Presbyterian Church; Toastmasters. He and his wife, Claire, live on a tree farm outside Chehalis.



GALLAGHAN, ART (Republican) Senator from the 26th District comprising parts of Kitsap and Pierce Counties, is serving his fourth session in the Senate. Graduated from Washington State University, B.S. in Wildlife Management. Member, Gig Harbor Kiwanis Club, Helmsmen, Peninsula V.I.P. group. Former Director Peninsula School District. Past member, Elks, Boy Scouts of America, Northwest Steelheaders, Veterans of Foreign Wars, American Legion. Member of Gig Harbor Methodist Church, World War II Navy veteran. Employed by Washington State Department of Fisheries. He and his wife, Deanie, have two grown children, Michael and Tracy.

SENATORS



GASPARD, MARCUS S. (Democrat) Senator from the 25th District of Pierce County. He has served in the Senate since 1976 after serving two terms in the House of Representatives. He has been the Chairman of Education, Vice-Chairman of Ways and Means and is currently a member of these committees and the Agriculture Committee. He was born in 1948 and reared in Puyallup, Washington. He is a graduate of the University of Oregon and is employed in private business. Marc and his wife, Jo Anne, and their daughter, Morgan, live in Sumner, Washington.

GOLTZ, H. A. "BARNEY" (Democrat) Senator from the 42nd District, Whatcom County, is serving his eighth year in the Senate and has served one term in the House of Representatives. Born in 1924 in Minnesota. Graduate Macalester College, B.A., and University of Minnesota, M.A. Is Director of University Planning at WWU, Bellingham. He and his wife, Marguerite, have one son and one granddaughter.



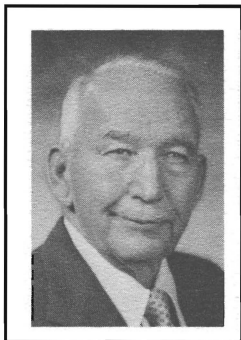
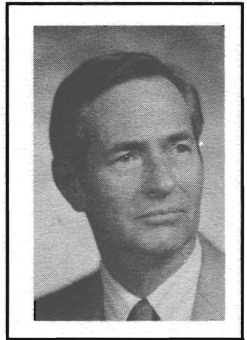
GOULD, Susan E. (Republican) Senator from the 21st District of Snohomish County, serving her fifth session. Born in Seattle, attended Roosevelt High School and Whitman College, graduated from the University of Washington in chemistry. Past president of Snohomish County League of Women Voters, served two terms on the Edmonds School Board, was a Snohomish County Freeholder and a member of the Governor's Committee on Law and Justice, currently on a national task force on Indian affairs and the Snohomish County United Way Board. She and her husband, Ray, have three grown children.

GUESS, SAM C. (Republican) President Pro Tem. Senator from the 6th District of Spokane County, is serving his eleventh session. Born in 1909 in Greenwood, Mississippi. Holds a B.S. in Civil Engineering from University of Mississippi and an M.S. in Engineering from WSU. Served with the First U.S. Army in Europe. Member, Sigma Nu fraternity and Kiwanis Club. He and his wife, Dorothy, have two children.



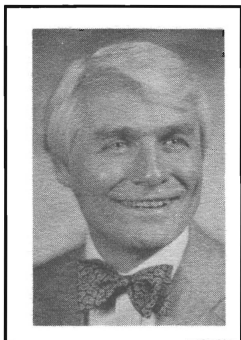
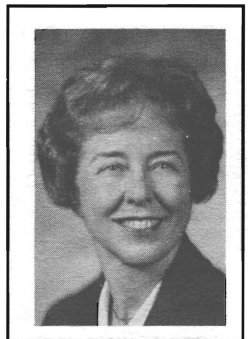
SENATORS

HALEY, TED (Republican) Senator from the 28th District comprising Lakewood, Steilacoom, Fircrest and University Place, is serving his second term in the Senate. Served three terms in the House of Representatives. Co-Chairman of the Energy and Utilities Committee in the House in 1979. Served on the Social and Health Services, Natural Resources and Constitutions and Elections Committees in the Senate. Born in Tacoma in 1920. Has a B.A. from Amherst College and M.D. from the University of Rochester, is a Lt. Col., retired, from the U.S. Army Medical Corps, in private practice in Lakewood. A widower with four grown children.



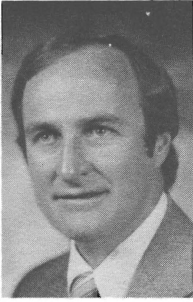
HANSEN, FRANK D. "TUB" (Democrat) Senator from the 13th District comprised of Kittitas, most of Grant, part of Yakima, and Adams Counties, serving his fourth session in the Senate, served six years in the House of Representatives. Born in Olema, Washington. Retired cattle rancher, Past Chairman Agriculture Stabilization Conservation Service; Past Director, Washington State Cattlemen's Association. Member: Grange, Farm Bureau, and Elks. He and his wife, Wanda, have two sons and two daughters.

HAYNER, JEANNETTE (Republican) Republican Leader from 16th District comprising Franklin, Walla Walla and Columbia (part). Serving her second term in the Senate, served four years in the House of Representatives. Received B.A. and J.D. degrees from the University of Oregon. Former Chairman of the Walla Walla School Board on which she served for seven years, currently serves on several state and regional citizen advisory boards, and is a member of the Washington State Conservation Commission. Member of the Lutheran Church. She and her husband have three children.



HEMSTAD, DICK (Republican) Senator from the 22nd District of Thurston County serving his first term. Born in 1933, raised in Willmar, Minnesota. Graduate St. Olaf College, B.A., and University of Chicago Law School. Practiced law in Seattle for 10 years; served as legal counsel to Governor Dan Evans, 1967-1973 and as State Director of Community Development, 1973-1977. Professor of Law, University of Puget Sound School of Law. Lutheran. He and his wife, Micki, have four children.

SENATORS



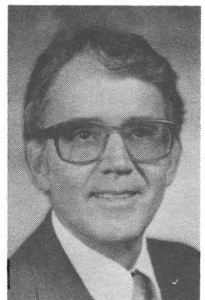
HUGHES, JERRY M. (Democrat) Senator from the 5th District, Spokane. Born in 1944, and a resident of Spokane since 1962, he is a graduate of Gonzaga University with a degree in Political Science and Government and is currently an instructor at Gonzaga University in Government and History at North Central High School, Spokane. He is married and has three children. Served two terms in the House of Representatives and is serving his first term in the Senate.

HURLEY, MARGARET (Democrat) Senator from the 3rd District of Spokane County, is serving her first term with the Senate and has served fourteen terms with the House of Representatives. Graduate, Holy Names College with Bachelor of Arts in Education. Member: Eastern Washington University Foundation, National Order of Women Legislators. She has four children.



JONES, JOHN D. (Republican) Republican Caucus Chairman. Senator from the 48th District of King County. Served one session in the House of Representatives and was appointed to the Senate January 8, 1973, and is serving his sixth session. Born in 1923 in Wales. Attended Wayne State University, is a manager of Pacific Northwest Bell Telephone. Past President, Bellevue Chamber of Commerce; President, Rotary; Chairman, North King County UGN. He and his wife, Ruth, have two children.

KISKADDON, BILL (Republican) Senator from the First District of King and Snohomish Counties, serving his first term in the Senate. Served three terms in the House of Representatives from 1966 through 1972. Born in California in 1929. Graduate of University of Washington with B.S. and M.S. in Electrical Engineering and Masters of Social Work degrees. Formerly an electronic research engineer, now a counselor and therapist in private practice. He and his wife, Donna, have three children.



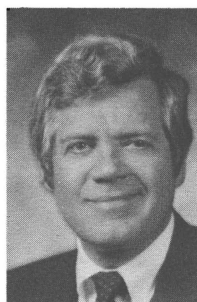
SENATORS

LEE, ELEANOR (Republican) Majority Caucus Vice Chairman. Senator from the 33rd District. Attended Washington State University and graduated from The Evergreen State College in Political Science. Business manager and director of a manufacturer's representative firm. Former State Land Planning Commissioner and League of Women Voters official; Past chair of Fire District 2 Civil Service Board, Highline Citizens for Schools, and Civil Air Patrol Advisory Committee. Founder and co-chair Elected Washington Women. She and her husband, David, have three daughters and three grandsons.



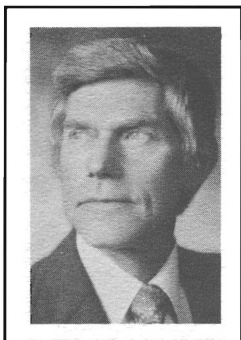
LYSEN, KING (Democrat) Serving his first term in the Senate. Representing the 31st District of King County. Served four terms in the House of Representatives. Born in 1942 in Minneapolis. Graduate, Seattle University with degree in Education and Political Science. A former high school teacher and counselor, and now a commercial fisherman and Real Estate agent. He and his wife, Tony, have five children.

McCASLIN, BOB (Republican) Senator from the 4th Legislative District which comprises parts of Spokane and Whitman Counties. Born in Warren, Ohio in 1926, served in the U.S. Navy during WW II, graduate of WSU in 1950 with a major in Sociology and Economics. Served in Production Management for 17 years with large aluminum fabricator and for the past 10 years has owned and managed a Real Estate firm in the Spokane Valley. Married, has two children, Janie and Bob, and with wife, Wanda, he has been active in many service clubs and civic activities in the Spokane Valley.



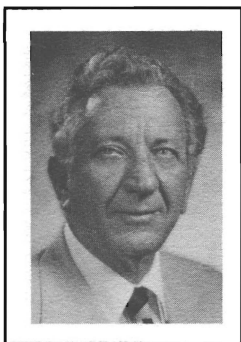
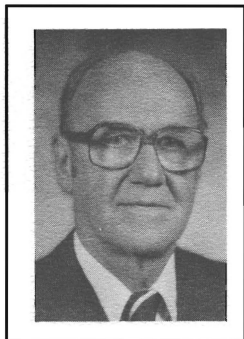
McDERMOTT, JIM (Democrat) Senator from the 43rd District, King County, is serving his second term in the Senate and served one term in the House of Representatives. Age 45. Graduate, Wheaton College, B.A., and University of Illinois Medical School; is a child and adult psychiatrist. LCDR (MC) USNR, 1968-1970. Former chairman, Coalition for Open Government. He and his wife, Virginia, have two children.

SENATORS



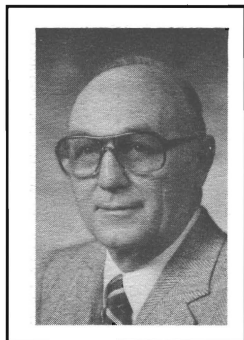
METCALF, JACK (Republican) Senator from the 10th District (Island County, part Snohomish and part Skagit Counties). Served two sessions in the House and served five previous sessions in the Senate. Born in Marysville. Graduate, Pacific Lutheran University. Retired teacher of history, mathematics and government. Member: Whidbey Island Transportation (director), South Whidbey Kiwanis, Past President and current vice president, Washington Association of Professional Educators; member National Association of State Legislators. He and his wife, Norma, have four daughters, two grandchildren.

MOORE, RAY (Democrat) Senator from the 36th District, King County, is serving his first term in the Senate. Born in Seattle, attended the University of Washington. Businessman. President, King Gallatin Restaurant Corp.; Securities Broker with The National Securities Corporation; Partner, Sagemoor Farms; A Founder, ACT Theatre; Former Chairman, Washington State Securities Committee. Past president, Washington State Mental Health Association. He and his wife, Virginia, have a teenage daughter.



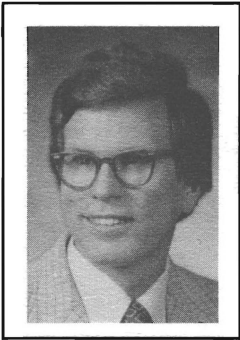
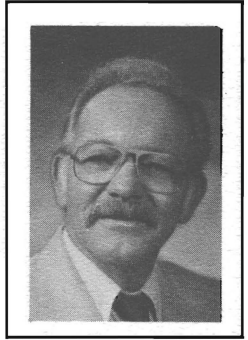
NEWHOUSE, IRVING (Republican) Senator from District 15 of Yakima County and is serving his first term in the Senate having been appointed on December 9, 1980 to complete the term of newly-elected Congressman Sid Morrison. He served eight terms in the House. Native of the Yakima Valley, graduate of Washington State University with B.S. in Agriculture, operates an irrigated, diversified ranch. He and his wife, Ruth, have six children.

PATTERSON, E. G. "PAT" (Republican) Senator from the 9th District, serving his first term, preceded by eight years in the House of Representatives where he held Republican leadership positions. A native of Pullman, Washington. Army officer veteran of WW II. Graduate of Washington State University with B.A. in Political Science in 1946. Served as State Adjutant Quartermaster, VFW; retired after 26 years as Director of WSU's Alumni Relations, Scholarship and Development Fund, Graduate Records and Legislative Consultant. Member of Pullman Chamber of Commerce and VFW. He and his wife, Maxine, have seven grown children.



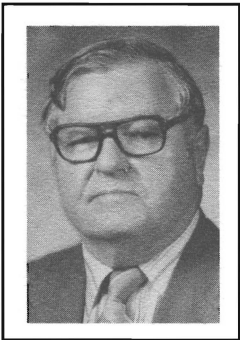
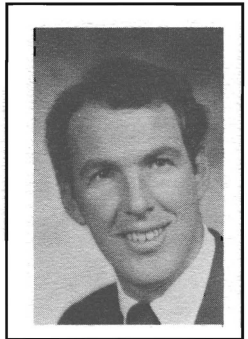
SENATORS

PETERSON, LOWELL (Democrat) Senator from the 40th District comprising San Juan and Skagit Counties and part of Whatcom County, he is serving his tenth session. Born in 1921 in Pateros, Washington, is an oil distributor. Served in the Navy in WW II. Member, American Legion, Eagles and Elks. A widower, Senator Peterson has three grown children.



PULLEN, KENT (Republican) Senator from the 47th District. Elected to State House of Representatives in 1972, elected to State Senate in 1974, and re-elected to State Senate in 1978. Born in El Paso, Texas, in 1942. Graduate of University of New Mexico (B.S., 1963) and University of Washington (PhD., 1967). Former Assistant Professor of Chemistry at the University of Idaho. Currently works as a research engineer for The Boeing Company. He and his wife, Fay, have two children.

QUIGG, J. T. (Republican) Senator from the new 19th District comprising of Pacific and Wahkiakum Counties and part of Cowlitz and Grays Harbor Counties, serving his second term in the Senate. Born in 1947 in Aberdeen, Washington, received a Bachelor of Science in Commerce in 1969 from the University of Santa Clara. The marketing manager of Quigg Bros.-McDonald Inc., served as Grays Harbor County Delegate to Shorelines Master Plan, member of the City of Aberdeen Park Board, and member of Grays Harbor County and City of Aberdeen Shorelines Hearings Boards. He and his wife, Janie, have three children and make their home in Aberdeen.



RASMUSSEN, A. L. "SLIM" (Democrat) Senator from the 29th District of Pierce County. Has served eight terms in the House of Representatives and is serving his eleventh session in the Senate. Former Mayor of Tacoma. Born in Everett in 1909. He and his wife, Eleanor, have four children.

SENATORS



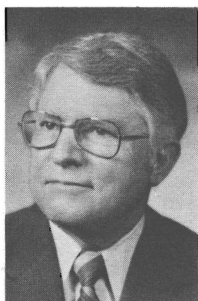
RIDDER, RUTHE (Democrat) Minority Whip. Senator from the 35th District of King County. Elected to the Senate in November 1973 for the unexpired term. Re-elected in 1974 and 1978. Graduate of the University of Washington with a B.S. in Psychology. Member of Rainier Beach Women's Club. Past Member of Washington State Women's Council. Presently serving as Minority Whip of the Senate; Vice Chairman, Urban Development Committee National Conference State Legislatures; and Senate Committees on Constitutions and Elections; Social and Health Services; Ways and Means. She and her husband, Bob, have five children.

SCOTT, GEORGE W. (Republican) Senator from the 46th District of King County, served one session in the House of Representatives and is serving his eighth session in the Senate. Born in 1937 in Seattle. Graduate, Whitworth College with B.A. in Philosophy. Holds M.A. and Ph.D. degrees from U. of W. in History. His wife, Carol, is Professor of Music at Seattle Pacific College.



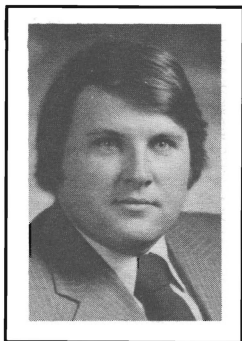
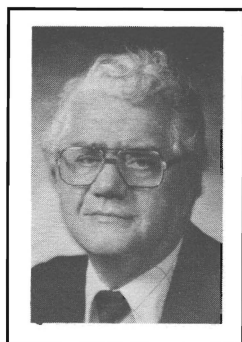
SELLAR, GEORGE L. (Republican) Senator from the 12th District comprising Chelan and Douglas and part of Grant and Okanogan Counties, serving his seventh session in the Senate. Born in 1929 in Chicago, Water Resource Developer, Port of Chelan County. Attended Wenatchee Valley College and University of Nebraska. Member, Washington State Dispensing Optician Association, Pacific Coast Contact Lens Society, Chamber of Commerce, Douglas County Regional Planning Board. He lives in East Wenatchee with his wife, Alma.

SHINPOCH, ALBERT N. "BUD" (Democrat) Assistant Minority Leader. Senator from the 11th District, comprising part of Renton and Kent, King County, serving his second term in the Senate, served four terms in the House of Representatives. Born in Council Hill, Oklahoma. Past President Renton Association for Handicapped Children. Member: Greater Kent Chamber of Commerce, Region IV Department of Social and Health Services Advisory Committee. Member of Management, The Boeing Company. Bud and his wife, Barbara, have two daughters and three grandchildren.



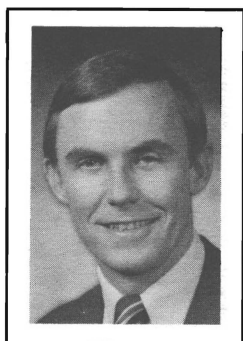
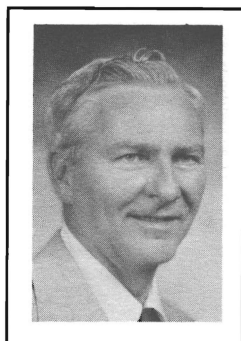
SENATORS

TALLEY, DON L. (Democrat) Senator from the 18th District comprising part of Cowlitz and Clark Counties, is serving his fourteenth session. Born in 1918 in Tacoma. Graduate, high school, is employed as a Safety Supervisor for the Port of Longview. Served in the Navy during WW II. Chairman, Oceanographic Commission of Washington. Member, Masons, Elks, Moose, Eagles, American Legion and Grange. He and his wife, Deloris, have four children.



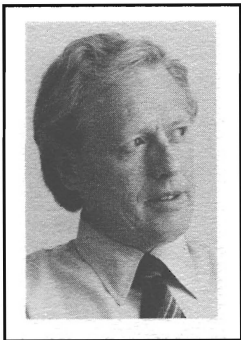
TALMADGE, PHIL (Democrat) Senator from the 34th District of King County. A magna cum laude graduate of Yale University with a B.A. in Political Science and a graduate of the University of Washington School of Law, where he served on the Law Review. An attorney with the firm of Karr, Tuttle, et al, in Seattle. He and his wife, Darlene, have two sons and a daughter.

VOGNILD, LARRY L. (Democrat) Senator from the 38th District of Snohomish County serving his first term. Born in 1932 in Spokane. He is a retired Battalion Chief of the Everett Fire Fighters. He is currently self-employed. Member: Elks, Eagles, Yacht Club, Kiwanis and Normanna Lodge. Served eight years in the Naval Reserve, two years active duty in Korea. He and his wife Dorothy have a son and three daughters.



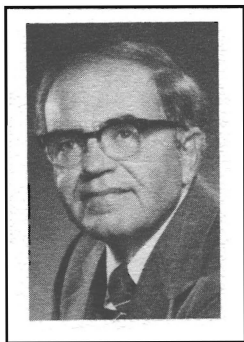
von REICHBAUER, PETER (Republican) Senator from the 30th District, comprising parts of Auburn, Federal Way, Tacoma and Vashon Island. Elected to Senate in Nov. 1973 for unexpired term, re-elected in 1974 and 1978, for four-year terms. Born in Seattle, raised in Tacoma, graduated from University of Alabama, commissioned in U.S. Army, and is in Investment Management; Kiwanis (Board of Directors); Vice Chairman, U.S. Olympics Comm.; Northwest Steelheaders; Federal Way Boys' & Girls' Club Board; Beta Theta Pi; Ducks Unlimited and others.

SENATORS



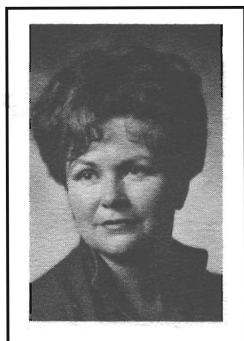
WILLIAMS, ALVIN C. (Democrat) Senator from District 32 of King County; appointed February 1978; elected for term 1979-1982; served eight years in the House of Representatives. Born in 1930 in North Dakota. He served with U.S. Marine Corps and is a graduate, University of Washington, School of Architecture and Urban Planning, is an architect. Served on the Seattle Design Commission and Ballard Avenue Historic District Board. Past Chairman, Lake Union Advisory Commission and Past President of the Wallingford Community Council. Member of Solar Advisory Group and a Board Member of Citizens for a Solar Washington.

WILSON, BRUCE A. (Democrat) Minority Caucus Vice Chairman. Senator from the 7th District comprising Ferry, Stevens, Pend Oreille and Lincoln Counties and portions of Okanogan and Spokane Counties. Serving his seventh session. Born in 1921 in Chicago. Graduate, Northwestern University. Retired weekly newspaper publisher. Past President, Omak Chamber of Commerce and Okanogan County Historical Society. He and his wife, Merilynn, have four children.



WOJAHN, R. LORRAINE (Democrat) Minority Caucus Secretary. Senator from the 27th District of Pierce County. Completed four terms in House of Representatives and has been elected to serve her second term in the Senate. Born in Tacoma. Educated in Seattle schools and U. of W. Former consumer specialist for Washington Labor Council; Board Member, Consumer Credit Counseling Service, Inc., Tacoma; served 10 years, Washington State Judicial Council; seven years, Washington State Women's Council; and one year, National Advisory Board of Consumer Federation of America. She and her husband, Gilbert, have one son.

WOODY, DIANNE H. (Democrat) Senator from the 39th District of Snohomish and King Counties (part). Is serving her fourth session in the Senate. Born in Washington State and attended schools in both Eastern and Western Washington. Graduated from Western Washington State College with majors in Psychology and History, and has done post-graduate work at the University of Washington. She has been a social worker and small business proprietor and currently lives in Woodinville with her son and daughter.



SENATORS

ZIMMERMAN, HAROLD S. (HAL) (Republican) Senator from the 17th District (Klickitat, Skamania, and part of Clark Counties) served 14 years in the House of Representatives. Born in 1923 in Valley City, North Dakota. Graduate, University of Washington with a B.A. degree; is Associate Publisher of Camas-Washougal Post-Record; Director, Eagle Newspapers of Washington and Oregon. Served in the Air Force in World War II. Past President, Washington Newspaper Publishers Association. Member, Sigma Chi, United Methodist Church, Kiwanis, Grange. He and his wife, Judy, have raised three children, Karen, Steve and Julie.



SNYDER, SID (Democrat) Secretary of the Senate, elected May 1969, and serving his ninth session. Was Assistant Chief Clerk and Acting Chief Clerk of the House from 1957 through May, 1969. First worked for the Legislature in 1949. Born in 1926 in Kelso. Attended Lower Columbia College, owns and operates a supermarket in Long Beach. Member, Elks, Lions. He and his wife, Bette, have three grown children.

BRACHTENBACH, MARILYN (Republican) Deputy Secretary of the Senate since February, 1981; Senior Research Analyst and Caucus Staff Director for Senate Republican Caucus, 1973-1981. Former counseling psychologist and college instructor. Born in Pleasant Hill, Oregon. Husband Robert is Chief Justice of the Washington State Supreme Court; they live in Olympia.



HILDEBRAND, FRED W. (Republican) Elected Sergeant at Arms of the Senate in 1981. First served as Assistant Sergeant at Arms in 1975. Born in Tacoma, Washington. Under-sheriff Pierce County for 12 years. Member Elks and Eagles; Past President Western Region Muscular Dystrophy Association, Life Member Bellarmine Boosters. He and his wife Laura have two grown daughters.

HOUSE OF REPRESENTATIVES OF THE STATE OF WASHINGTON



WILLIAM M. POLK
Speaker of The House

William M. Polk is from the 41st District in King County, serving his sixth term. Born in 1935 in Cleburne, Texas, raised in Haddonfield, New Jersey, a graduate of Cornell University with a Bachelor of Architecture. He is a principal in the architectural firm of John Graham Company; a member of the American Institute of Architects; College Club; National Director, American Legislative Exchange Council; Ryther Child Center; Rotary; and is a Director of Cornish School for Allied Arts. He and his wife, Karla, and three children, Lucy, Beth and Andy, live on Mercer Island.

ROSTER OF MEMBERS

HOUSE OF REPRESENTATIVES			98 Members— 55 Republicans, 43 Democrats
NAME	PARTY	DIST.	MAILING ADDRESS
ADDISON, Bruce	R	34	4509 S.W. Holgate, Seattle, 98116
AMEN, Otto	R	9	Route 1, Box 45, Ritzville, 99169
ARMSTRONG, Seth	D	36	1715 Bigelow N., Seattle 98109
BARNES, Richard O.	R	33	18118-6th Avenue SW, Seattle 98166
BARR, Scott	R	7	Route 1, Box 130, Edwall, 99008
BARRETT, Richard H.	R	5	N. 9819 Nez Perce Court, Spokane, 99208
BECKER, Mary Kay	D	42	2406 Williams, Bellingham, 98225
BENDER, Rick S.	D	1	19514-64th Ave. NE, Seattle, 98155
BERLEEN, Jeanette	R	31/34	13012-3rd South, Seattle, 98168
BICKHAM, Noel	R	14	25 Crest Circle, Yakima, 98908
BOND, R. M. "Dick"	R	6	S. 4226 Crestline, Spokane, 99203
BREKKE, Joanne J.	D	32	6525 Sycamore NW, Seattle, 98117
BROWN, Wendell B.	D	29	5615 South Ferdinand, Tacoma, 98409
BURHS, Bill	D	43	2511 W. Montlake Place East, Seattle, 98112
CANTU, Emilio	R	41	4416-138th Avenue SE, Bellevue, 98006
CHAMBERLAIN, Robert L.	R	17	Route 5, Box 10, White Salmon, 98672
CHANDLER, Rod	R	45	6522-208th Ave. NE, Redmond, 98052
CLAYTON, Harold	R	15	P.O. Box 351, Toppenish, 98948
COLE, Grace	D	1	3026 N.E. 163rd, Seattle, 98155
DAWSON, Dan	R	26	P.O. Box 280, Gig Harbor, 98335
DICKIE, Lyle J.	R	15	Rt. 1, Box 1365A, Grandview, 98930
EBERLE, Bob	R	30	Route 2, Box 206, Vashon, 98070
EHLERS, Wayne	D	2	14301 South Yakima, Parkland, 98444
ELLIS, William H.	R	46	1111-3rd Avenue Bldg., Seattle, 98101
ENG, John	D	37/43	P.O. Box 20399, Seattle, 98102
ERAK, John	D	19/19B	617 West 3rd Street, Aberdeen, 98520
FANCHER, Helen	R	7	1340 Cape LaBell Rd., Tonasket, 98855
FISKE, Pat	R	40	P.O. Box 336, Mount Vernon, 98273
FLANAGAN, S. E. "Sid"	R	13	Rt. 2, Box 989 Rd. S. NW, Quincy, 98848
GALLAGHER, P. J. "Jim"	D	29	125 South 72nd, Tacoma, 98408
GALLOWAY, Shirley A.	D	49	1602 North Divine Road, Vancouver, 98661
GARRETT, Avery	D	11	602 S.W. Langston Road, Renton, 98055
GARSON, Jr., W. H. "Bill"	R	22	P.O. Box 596, Tenino, 98589
GRANLUND, Barbara	D	26	3777 Pine Tree Drive, Port Orchard, 98366
GREENGO, Irv	R	46	3203 N.E. 88th, Seattle, 98115
GRIMM, Daniel K.	D	25	9041/2-7th Avenue SW, Puyallup, 98371
HANKINS, Shirley Williams	R	8	2120 Duportail, #8, Richland, 99352
HASTINGS, Richard 'Doc'	R	16	5505 West Sylvester, Pasco, 99301
HECK, Dennis L.	D	17	707 N.E. 118th Avenue, Vancouver, 98664
HINE, Lorraine A.	D	33	1834 South 229th, Des Moines, 98188
HOUCHEEN, Joan	R	10	471 E. North Camano Drive, Camano Island, 98292
ISAACSON, Ray	R	8	2106 Lee Boulevard, Richland, 99352
JAMES, Harry	R	23	211 Highway 3, Poulsbo, 98370
JOHNSON, Stanley C.	R	28	7302-66th Avenue West, Tacoma, 98467
KAISER, Duane L.	D	2	4802-180th St. E, Tacoma 98446
KING, Joseph E.	D	49	P.O. Box 5375, Vancouver, 98668
KING, Richard	D	38	309-77th Place S.W., Everett, 98203
KREIDLER, Mike	D	22	129 San Mar Drive NE, Olympia, 98506
LEONARD, Margaret J.	R	3	1117 East Mission Ave., Spokane, 99202

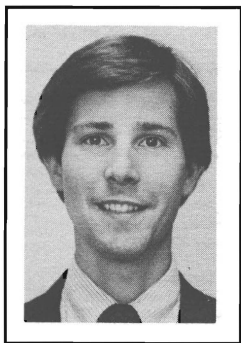
ROSTER OF MEMBERS

HOUSE OF REPRESENTATIVES

98 Members—
55 Republicans, 43 Democrats

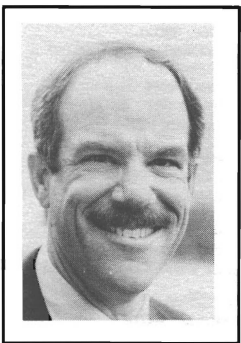
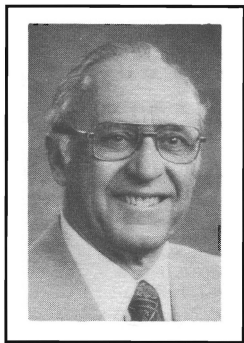
NAME	PARTY	DIST.	MAILING ADDRESS
LEWIS, Jim	R	14	8103 Poplarview Way, Yakima, 98908
LUNDQUIST, Homer	R	40	327 Fairhaven, Burlington, 98233
LUX, Eugene V.	D	35/11	5537 South 119th, Seattle, 98178
MARTINIS, John	D	38	212 Skyline Dr., Everett, 98201
MAXIE, Peggy Joan	D	37	1441 Madrona Drive, Seattle, 98122
McCORMICK, Geraldine	D	5	W. 1829 Northridge Court, #4, Spokane, 99208
McDONALD, Dan	R	48	4650-92nd NE, Bellevue, 98004
McGINNIS, Michael R.	R	6	S. 2206 Crestline, Spokane, 99203
MITCHELL, James B.	R	39/39A	1015 Stich Road, Lake Stevens, 98258
MONOHON, Carol	D	19/19B	Route 1, Box 136, Raymond, 98577
NELSON, Dick	D	32	3612 Whitman North, Seattle, 98103
NELSON, Gary A.	R	21	9710 Wharf Street, Edmonds, 98020
NICKELL, C. R. "Dick"	R	12	1200 Central St., Wenatchee, 98801
NISBET, Andrew	R	24	645D Kitchen Dick Ln. Rd., Sequim, 98382
NORTH, Frances C.	D	47/45	Box 441, North Bend, 98045
O'BRIEN, John L.	D	35/37	1305 Joseph Vance Building, Seattle, 98101
OWEN, Brad	D	24/35	428 W. Harvard, Shelton, 98584
PADDEN, Mike	R	4	E. 13021-9th Ave., Spokane, 99216
PATRICK, Michael E.	R	11/47	13232 S.E. 192nd, Renton, 98055
POLK, William M.	R	41	7220-92nd Avenue SE, Mercer Island, 98040
PRINCE, Eugene A.	R	9	P.O. Box 69, Thornton, 99176
PRUITT, Paul	D	34	7537-31st SW, Seattle, 98126
RINEHART, Nita	D	43/46	4515-51st Ave. NE, Seattle, 98105
ROSBACH, Wilma	R	20	454 N. Market Blvd., Chehalis, 98532
RUST, Nancy S.	D	44/1	18747 Ridgefield Rd. NW, Seattle, 98177
SALATINO, James E.	D	27	5002 La Hal Da Avenue NE, Tacoma, 98422
SANDERS, Paul	R	48	2680-169th SE, Bellevue, 98008
SCHMIDT, Karen	R	23	10805 Bill Pt. View, Bainbridge Island, 98110
SCOTT, Gary H.	D	39/39B	12913-307th SE, Sultan, 98294
SHERMAN, Marion Kyle	D	47	24629 S.E. 200th, Maple Valley, 98038
SMITH, Curtis P.	R	13	Route 2, 875 I NW, Ephrata, 98823
SOMMERS, Helen	D	36	2516-14th West, Seattle, 98119
SPRAGUE, Walt	R	21	420 Legislative Bldg., Olympia 98504
STRATTON, Lois	D	3	1724 W. Mansfield, Spokane, 99205
STRUTHERS, Gene	R	16	601 Village Way, #50, Walla Walla, 99362
TAYLOR, Ren	R	4	North 4710 Ella Road, Spokane, 99206
TEUTSCH, Delores E.	R	45	7334 Champagne Point Road, Kirkland, 98033
THOMPSON, Alan	D	18	191 Nob Lane, Kelso, 98626
TILLY, Earl F.	R	12	1509 Jefferson, Wenatchee, 98801
TUPPER, Steve	R	44/1	13437 Greenwood Ave. N. #107, Seattle, 98133
VALLE, Georgette	D	31/34	1434 S.W. 137th, Seattle, 98166
VAN DYKEN, Roger	R	42	1251 Garden Circle, Lynden, 98264
VANDER STOEP, J.	R	20	727 S.W. 16th Street, Chehalis, 98532
WALK, George W.	D	25	11607-98th Avenue East, Puyallup, 98371
WANG, Art	D	27	2402 N. Madison, Tacoma, 98406
WARNKE, Frank J.	D	30/31	29457-51st South, Auburn, 98002
WILLIAMS, Bob	R	18/19A	111 Victoria Street, Longview, 98632
WILSON, Simeon R. "Sim"	R	10	P.O. Box 145, Marysville, 98270
WINSLEY, Shirley J.	R	28	539 Buena Vista Avenue, Fircrest, 98466

REPRESENTATIVES



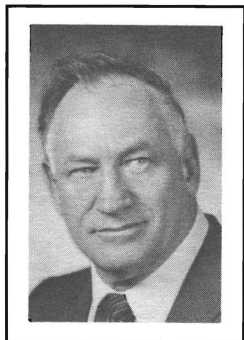
ADDISON, BRUCE (Republican) Representative from the 34th District, West Seattle, serving his second term. Graduate of Washington State University in Political Science and Economics. Addison is an Associate Realtor. His community activities include West Seattle YMCA, Board of Managers; South West Youth Service Bureau, Board of Directors; West Seattle Chamber of Commerce, Board of Directors; South Seattle Community College Foundation; West Seattle Friend to Friend, Board of Directors; Genesee Hill Community Council, Board of Directors, and West Seattle Jaycees.

AMEN, OTTO (Republican) Representative from Legislative District 9 comprising Adams, Asotin, Garfield, Columbia, all of Whitman, part of Franklin County, is serving his eighth term and is Speaker Pro Tempore. Graduate, W.S.U. with a B.S. in Pharmacy, is engaged in farming. Member: Grange, Farm Bureau, Lions International and Chamber of Commerce. Served as President of Washington Assn. of Wheat Growers, President of Western Wheat, and Chairman of Washington Wheat Commission. Born in Washington; he and wife, Doris, have two sons.



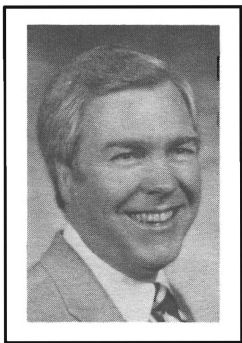
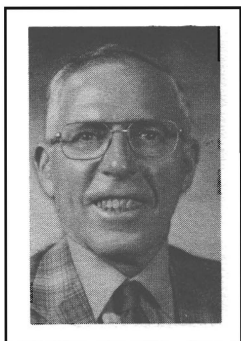
ARMSTRONG, SETH (Democrat) Representative from the 36th District in Seattle, serving his first term. Attorney, Armstrong & Alsdorf; author and teacher, credit and consumer law in Washington; Seattle Chamber of Commerce, Small Business Council; YMCA; Municipal League; Blockwatch leader; member, Queen Anne Community Council.

BARNES, DICK (Republican) Representative of the 33rd District, Des Moines, Normandy Park, the Sea-Tac Airport and parts of Burien; serving his fourth term. Born in Iowa, he left the University of Illinois to become an Air Force pilot during World War II. As a Reservist, he was recalled for duty during the Korean and Vietnam wars. Educated as a Geophysical Engineer at the Colorado School of Mines, employed by the Boeing Company since 1955 and is presently a Systems Analyst in Air Traffic Control Studies. He and his wife, Sylvia, have three children.



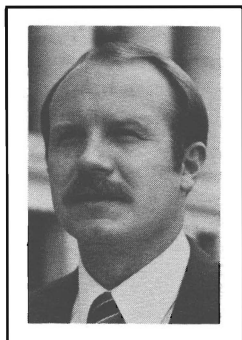
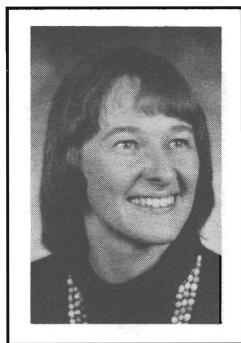
REPRESENTATIVES

BARR, SCOTT (Republican) Representative from the 7th District comprising Lincoln, Pend Oreille, Stevens, Ferry, and parts of Okanogan and Spokane Counties. Serving his third term in the House. Born in 1916. Attended Whitman County schools. He and his wife, Dollie Mae, live on their cattle and grain farm near Edwall in Lincoln County. Belongs to Grange, Farm Bureau, Cattlemen's Assn. Served as President of State Wheat Grower's Assn. and State Assn. of Conservation Districts. Involved in agri-related businesses.



BARRETT, DICK (Republican) Representative from the Fifth District (Northwest Spokane). Graduate of the U. of W. with a Journalism degree. Former newspaper editor, TV news director, ad agency manager. Since 1968 he has been a trade association manager in Spokane. Served as president of Spokane City Planning Commission, chairman of Spokane Downtown Housing Committee, chairman of School District 81 Building Committee, chairman Spokane County March of Dimes campaign. Member of Lions Club, Chamber of Commerce, Peddlers Club, Beta Theta Pi. Serving first term. He and wife, Pam, have four children.

BECKER, MARY KAY (Democrat) Representative from the 42nd District, western Whatcom County, is serving fourth term. Born in Aberdeen, Washington; raised on the Olympic Peninsula at Kalaloch. Graduate, Stanford University; also received B.A. from WWU. Co-authored book on oil spills; served in VISTA and worked as a legal secretary in Bellingham. She and her husband, Bill Johnston, have a son, Joe.



BENDER, RICK S. (Democrat) fifth term Representative from the 1st District of north King and south Snohomish Counties. Member of the Education, Energy and Utilities and Transportation Committees. Also serves on the Joint Committee on Energy and Utilities, Joint Interim Committee on Drug Trafficking, Special Legislative Committee on WPPSS and Committee on Facilities. Born in Fairbanks, Alaska in 1949. Attended North Seattle Community College, University of Washington, and the University of Puget Sound; served in U.S. Army Signal Corps, Vietnam veteran. Self-employed, contracting firm. He and his wife, Carla, and daughter, Alisa Dawn, live in north King County.

REPRESENTATIVES



BERLEEN, JEANETTE (Republican) is representing the 34th Legislative District which includes Burien, White Center and West Seattle. She received a B.S. in Business Administration with a major in accounting from the University of Washington in 1976. She is a member of local Chambers of Commerce. A life long resident of the district she serves, she is on the local board of Sea Explorer Scouting and holds a blue belt in Karate. Jeanette is a member of Burien Breakfast Toastmasters and is a member of the Hospital Financial Management Association.

BICKHAM, NOEL (Republican) Representative from Legislative District 14, comprising the cities of Yakima and Selah and is serving his first term. Graduate of San Diego State University. Retired insurance executive. Served in World War II and is a retired Lt. Colonel. Member of Kiwanis, Chamber of Commerce and numerous civic organizations. He and his wife, Jeanne, have two grown sons.



BOND, R. M. (DICK) (Republican) Representative from 6th District of Spokane County, serving his fourth term. Born in Spokane, educated at Calif. Institute of Tech., Univ. of Calif. Berkeley (ASB President), Univ. of So. Calif. with degrees in Mech. Engr., Bus. Admin., and a Comm. Pilots lic. Dick is a Marine Corps WW II vet.; Rotarian; Washington State Director, American Legislative Exchange Council; American Legion; Director of Nat'l. LP-Gas Assoc.; Air Force Assoc.; Eagle Scout and a Christian. He founded and operates Solar Gas Company in Spokane and Calgary. He and his wife, Patty, have three sons.

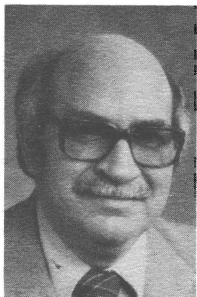
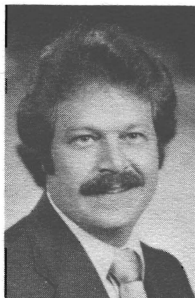


BREKKE, JOANNE J. (Democrat) representing Seattle's 32nd District; Ballard, Fremont, Green Lake, Greenwood, Phinney Ridge, and Wallingford, Appointed February, elected November 1978. A lifetime King County resident, born in North Bend, Washington. Graduated University of Washington 1957, with a B.A. in Sociology. Active in education and community concerns. She and her three children Melene, Marshall and Alison live on Phinney Ridge.



REPRESENTATIVES

BROWN, WENDELL B. (Democrat) Representative from the 29th District, Pierce County area. Born in 1945, life-long resident of the 29th District. He graduated from Mt. Tahoma High School in 1964 and from the University of Puget Sound in 1972 with a B.A. in business administration. He served 4 years in the United States Air Force and is a disabled American veteran. He is the owner of the Wendell Brown Insurance Agency in South Tacoma, and is serving his 2nd term in the House of Representatives.



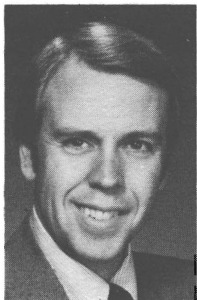
BURNS, WILLIAM L. (BILL) (Democrat) Representative from the 43rd District of King County is serving his third term. Born in 1927 in Brockwell, Arkansas. Attended University of Washington. Self employed. Has been active in many community organizations. During 46th Legislative session served on Higher Education, State Government, and Transportation Committees and as Democratic Assistant Whip. He and his wife, Doris, have one daughter, Susan.

CANTU, EMILIO (Republican) Representative from the 41st Legislative District; Bellevue, Mercer Island, Issaquah, and Northeast Renton. Graduate, University of Texas with a degree in Engineering. Employed by the Boeing Aerospace Company as an Engineering Design Manager in the design and development of space and weapon systems. Served on Bellevue School Board 1973 to 1981, was President in 1977. Was Republican 41st District Chairman, 1971-1973. Served in the U.S. Navy in World War II. He and his wife, Jo, have four children, Joe, David, Melissa and Sarah.



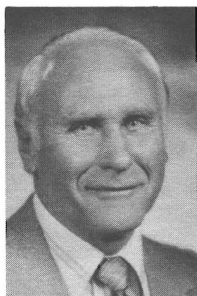
CHAMBERLAIN, ROBERT L. (BOB) (Republican) Representative from the 17th District (east part of Clark, Skamania, and Klickitat Counties) is serving his first term. Bob was born in New York State and is a graduate of the New York State College of Environmental Science and Forestry. Resident of the District since 1952, he is an active Forester, former school board member and chairman, and a member of the Society of American Foresters. He and his wife, Lorraine, have four children and two grandchildren.

REPRESENTATIVES



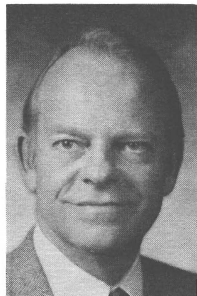
CHANDLER, ROD (Republican) Representative from the 45th District comprising the northeast portion of King County, is serving his fourth term. Born in 1942 in La Grande, Oregon. A former television news correspondent, he is now a partner in Chandler/Corcoran Inc., a public-relations and employee-relations consulting firm. He and his wife, Joyce, have a son John, 12, and a daughter, Amanda, 9. The Chandlers live on a small farm east of Redmond.

CLAYTON, HAROLD R. (Republican) is now serving his third term representing the 15th District. Born 1920 in Idaho. World War II veteran. Active in community affairs including Boy Scouts, ten years on Toppenish School Board. Thirty-one years diversified farming and businessman in valley area. Served fifteen years on Board of Directors of Central Washington Farms Crops Association. Three years on Board of Directors of Washington Asparagus Grower's Association.



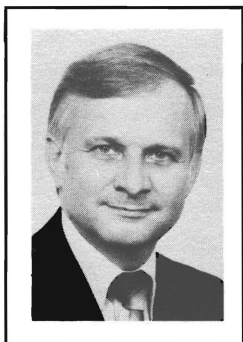
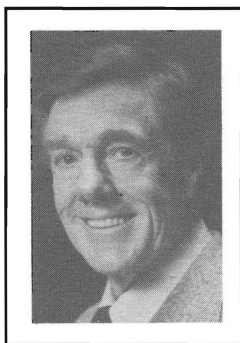
COLE, GRACE (Democrat) Representative from the 1st Legislative District, was appointed to replace Audrey Gruger who was elected to the King County Council. She and her husband, Carlyle, who is a self-employed engineer, have four grown children. Graduated from Oregon State University in 1949. Activities include the Shoreline School Board; president of the Shoreline Youth Services; active in YMCA drives; member of the AAUW, Common Cause, and League of Women Voters.

DAWSON, DAN (Republican) Represents the 26th Legislative District. Life-long resident of Washington and graduate of WSU. A USAF veteran of the Vietnam war, is active in numerous civic organizations including the Lions International. Dawson is Chairman of Financial Institutions and Insurance Committee and serves as a member of Appropriations—Human Services and Natural Resources Committees. He and his wife, Harriet, sons Danny and Steven, live in Gig Harbor on their family-owned tree farm.



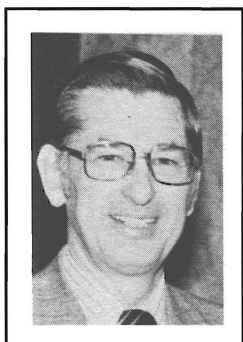
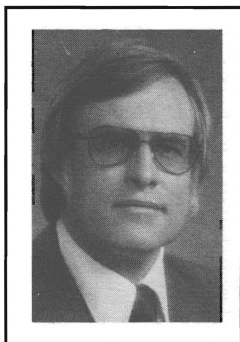
REPRESENTATIVES

DICKIE, LYLE J. (Republican) Representative from Legislative District 15 of Yakima County. Graduate of Central Washington University with B.A. Owns and operates an apple orchard and is a retired school administrator. He and wife, Verna, have three children, Lylene, Dyke and Clay.



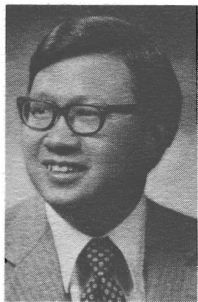
EBERLE, BOB (Republican) Representative from the 30th District, comprising Federal Way, Vashon Island and portions of Auburn and Kent, serving his third term in the House. Born in Missouri in 1934, graduated in Engineering from the University of Missouri, with Masters Degree from the University of Alabama, and advanced graduate studies credits from the University of Washington. Former University instructor, currently employed as a Training Specialist and Supervisory Engineer with the Boeing Co. Served as elected member of King County Charter Commission. He and his wife, Kay, have three children, Sue, Dan and Jill.

EHLERS, WAYNE (Democrat) House Minority Leader. Representative from the 2nd District of Pierce and Thurston Counties, is serving his fifth term. Born in Bellingham in 1938, he is an educator in both the public schools and university. Graduate of WWSC (B.A. and B.S.) and the University of Denver (M.A.). Active in professional and civic organizations. He and his wife, Frances, have two sons.



ELLIS, WILLIAM H. (Republican) Representative from the 46th District and Chairman of the Ethics, Law and Justice Committee. Graduate of Yale University with a degree in American Studies. A lawyer, he holds a Doctor of Jurisprudence from Stanford University School of Law, and is a partner in the Seattle firm of Foster, Pepper & Riviera. He serves as a member of the Washington State Statute Law Committee, is a national board member of the Christian Legal Society, and is active in numerous community, civic and church-related organizations.

REPRESENTATIVES



ENG, JOHN (Democrat) Representative from the present 37th and redistricted to 43rd District of King County. He is serving his fifth term. Born in 1942 in Hong Kong. Graduate of University of Washington with B.A. in Business Administration. Former Peace Corps Volunteer. During 47th Legislative session, served on Financial Institutions and Insurance, Education and Appropriations—Education Committees. He and his wife, Sandra, have a son, Keola Andrew.

ERAK, JOHN (Democrat) 19th District Representative, is serving his second term and is assistant Minority Whip. Born in Aberdeen. Employed by the Wishkah Valley School District as a High school teacher. A graduate of Grays Harbor College, Central Washington University and the University of Oregon. Served on the Aberdeen City Council, and as Grays Harbor County School Superintendent. He and his wife, Dolores, have three children, Ron, Tracey and Kay.



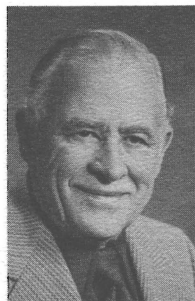
FANCHER, HELEN I. (Republican) Representative from the 7th District comprising Ferry, Stevens, Pend Oreille, Lincoln, and parts of Spokane and Okanogan Counties, is serving her third term. Born in Seattle, attended the University of Washington and Eastern Washington State College. She and her husband, Jick, have three grown children and are engaged in cattle ranching.

FISKE, PAT (Republican) Representative from the 40th Legislative District, comprising San Juan and parts of Skagit and Whatcom Counties. Born in Cleveland, Ohio in 1945. Graduate of Indiana University in Business Administration. Co-founder of home health care and hospice organizations. Formerly with General Telephone and Electronics. Former President, North Puget Sound Health Council; active in YMCA and United Way activities. He, and his wife, Sally, own and operate an office furniture and supply business. They have three children, John, David, and Carrie.



REPRESENTATIVES

FLANAGAN, SID (Republican) Representative from the 13th District comprising Grant, Kittitas and part of Yakima Counties, is serving his eleventh term. Representative Flanagan is a member of Rules, Revenue (Vice Chairman), Labor and Economic Development Committees and is Special Advisor to Leadership. Born in 1909 in Bellingham. Graduate of the University of Washington, majoring in Public Utilities. He is a farmer and cattleman. Member of St. Pius Xth Catholic Church of Quincy. Sid and his wife, Vyvien, have three children.



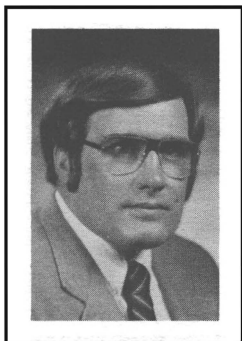
GALLAGHER, P. J. (JIM) (Democrat) Representative from the 29th District of Pierce County, is serving his 11th term. Born in 1915 in Taylor, Washington. Graduate, Washington State University. Member, Knights of Columbus and Eagles. He and his wife, Mabel, have six children.

GALLOWAY, SHIRLEY A. (Democrat) Representative from the 49th District, Vancouver. Second term House member, serving on Committees on Revenue, Education and ranking minority member of Agriculture. A 20 year community volunteer now serving on HOSTS, SWARF, Salvation Army Boards; Co-Chairman Elected Washington Women; First Federal Advisory, Citizens for Good Schools and Business for Arts Committees. Attended Clark College (A.A.&S.), The Evergreen State College (B.A.). She and her husband, Wayne, have five children.



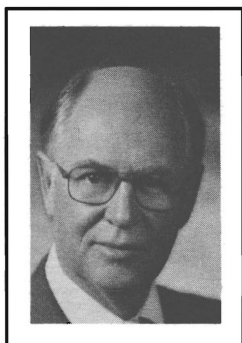
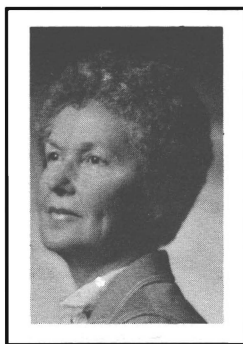
GARRETT, AVERY (Democrat) Representative from 11th District of King County, serving his eighth term. Born in Georgia in 1916. Boeing employee. Previously served as Caucus Chairman, Speaker Pro Tempore and Mayor of Renton. He and his wife, Edna-May, have a son, three daughters and one grandson and granddaughter.

REPRESENTATIVES



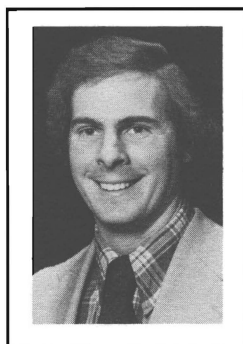
GARSON, Jr. W. H. "BILL" (Republican) Representative from the 22nd District, Thurston County, is serving his first term. Has a B.S., Education, Bloomsburg State College; Graduate work Penn. State Univ. He is a Corporation Executive, Pacco Incorporated. Member, Presbyterian Church, Tenino Lions Club, Olympia Elks, Tenino Wrestling Club. Former member of the Legislative Technical Advisory Committee to the State Patrol on Hazardous Materials, Advisory Committee to Labor and Industries, Governor's Safety Conference. He and his wife, Dana, have two children, William III and Beth Anne.

GRANLUND, BARBARA (Democrat) Representative from the 26th District comprising parts of Pierce and Kitsap Counties. Born in Nebraska, educated in Tacoma public schools, attended Olympic College; she has been a resident of the 26th District for 34 years. She is a homemaker and a community and Democratic Party activist. Serves on Kitsap United Way Board and in other organizations including: League of Women Voters, American Cancer Society, P.T.A., Children's Orthopedic Hospital, Port Orchard Kiwanianes and Port Orchard Business and Professional Women. She and her husband, Win, reside in Port Orchard and have two children and two grandchildren.



GREENGO, IRV (Republican) Representative from the 46th District, King County, is serving his fourth term. Graduate of the University of Minnesota with a B.S. in Aeronautical Engineering, attended Seattle University Graduate School. He is an aircraft design engineer. Greengo is Chairperson of the Revenue Committee and is also a member of Ways and Means and Higher Education Committees. Irv and his wife, Beth, live in northeast Seattle.

GRIMM, DANIEL K. (Democrat) Representative from the 25th District of Pierce and King Counties, is serving his third term and is Chairman of the House Democratic Caucus. Life-long resident of Puyallup. Graduate, Columbia University with B.A. in English Literature. His career is in personnel management. Member: Puyallup School District Advisory Committee on Vocational Education; Elks; Kiwanis.



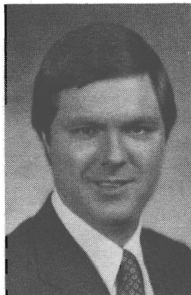
REPRESENTATIVES

HANKINS, SHIRLEY W. (Republican) Representative from Legislative District 8, Benton County. Shirley is serving her first term. She is a Training Specialist, member of the American Nuclear Society-Richland Section, Columbia Chapter of Health Physics Society, Association of Records Managers and Administrators, Energy Advocates, Tri-City Technical Council, Washington State Federation of Women's Clubs, Business and Professional Women's Club, Richland Republican Women. Widow of Myron McFadden Hankins, Sr.; one son, two daughters, one daughter-in-law, one grandson.



HASTINGS, RICHARD 'DOC' (Republican) Representative from the 16th District which includes Franklin, Walla Walla, and part of Columbia Counties. He is serving his second term in the House. Born in Spokane in 1941, he is in the institutional paper and janitorial supply business. He is a past president of the Pasco Chamber of Commerce, member of Rotary International, and a past member of the Jaycees. He and his wife, Claire, have three children, Kristen, Petrina, and Colin, and live in Pasco.

HECK, DENNIS L. (Democrat) Minority Floor Leader. Member, Rules Committee. Representative from the 17th District comprising Skamania, Klickitat and part of Clark Counties. First elected 1976. Re-elected 1978 and 1980. Former Democratic Chairman, Education Committee ('79-'80). Chairman, Basic Education Subcommittee of 1977. Heck and his wife, Paula, live in the Evergreen area of Clark County. He is the owner of Dennis L. Heck & Associates, Public Relations and Advertising.



HINE, LORRAINE (Democrat) Representative from the 33rd District, Des Moines, Normandy Park, Sea-Tac Airport and parts of Burien, serving her first term. Serves on the Education and Energy and Utilities Committees and is the Ranking Minority member of the Local Government Committee. Born in Timberlake, South Dakota and raised in South King County. Graduate WSU with a B.A. in Speech/Education. Three term Mayor of Des Moines, past president of the Puget Sound Council of Governments. She and her husband, William, have six children.

REPRESENTATIVES



HOUCHEN, JOAN (Republican) Representative from the 10th District. Is serving her second term. Chairman of Institutions Committee and serves on Appropriations—Human Services and Human Services Committees. Educated at University of Washington and worked in merchandising. Has owned and operated a small family farm on Camano Island for 14 years. She serves her community and county on many boards. Husband Ray, daughter Lis and son Chris.

ISAACSON, RAY (RAYMOND E.) (Republican) Representative from the 8th District, is serving his second term. Born in Superior, Arizona in 1928. A graduate of the University of Washington in Chemical Engineering. He has a broad background and extensive experience in nuclear engineering, and expert knowledge on nuclear wastes in the environment. He is Senior Engineering Advisor, Rockwell Hanford Operations. He and his wife, Evelyn, have four children, Erick, Vincent, Wanda and Carl.



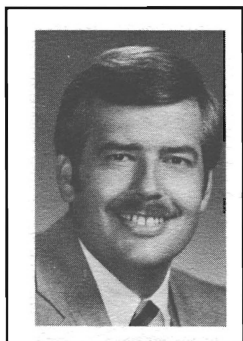
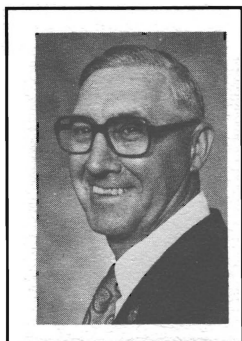
JAMES, HARRY (Republican) is serving his first term from the 23rd Legislative District which consists of Bremerton and all of Kitsap County north of Bremerton. He is the president of James Lumber and chairman of Bank of Poulsbo, a member of Rotary, past president of the Chamber of Commerce, Sons of Norway, Poulsbo Yacht Club and many other civic and business organizations. A longtime resident of Poulsbo, he and his wife, Beryl Anne, have four grown children.

JOHNSON, STANLEY C. (Republican) Representative of the 28th District, comprising Lakewood, Tillicum, University Place, Fircrest and Steilacoom. Resident of the district 15 years. President/Owner of Gerrish Bearing & Industrial Supplies, Inc., for the past 24 years. Former Chairman of the Clover Park School District's Board of Directors. Formerly, National President of North American Baptist General Conference. Presently Certified Professional Parliamentarian, American Institute of Parliamentarians. He and his wife, Anita, have four children, Mark, Tim, Kris and Andy.



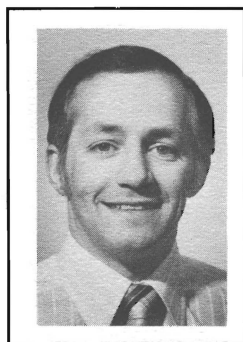
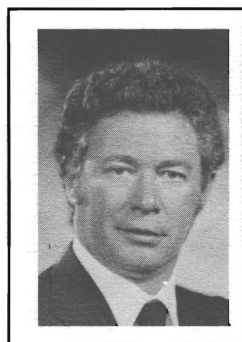
REPRESENTATIVES

KAISER, DUANE L. (Democrat) Representative from the 2nd District comprising part of Pierce and Thurston Counties. Appointed June and elected November 1981. Born in Wyoming in 1920. Veteran of WW II. Graduate of W.S.U. with Masters Degree O.S.U. Former Vocational Instructor. Active in community affairs and professional associations. He and his wife, Kay, have owned and operated the Green Branch Ranch Christmas tree farm in the district since 1962. They have two grown daughters and one granddaughter.



KING, JOSEPH E. (Democrat) Representative from the 49th Legislative District comprising City of Vancouver and part of the rest of Clark County, serving his first term. B.A. Linfield College, M.A. Western Kentucky University, owns and operates an independent insurance agency. Member various professional and civic group organizations and active community volunteer. Serves on Appropriations—General Government, Human Services and Labor and Economic Development Committees. He and wife, Chris, have three children.

KING, RICHARD (Democrat) Representative from the 38th District of Snohomish County; he is now serving his ninth term and has served as Majority Floor Leader and Minority Leader. He is currently Vice President of the Democratic State Legislators of the United States. Graduate University of Washington with B.A. and M.A. degrees, teaches speech and parliamentary procedure at Everett Community College. He and his wife, Mary, have four children.



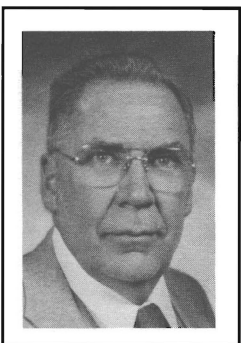
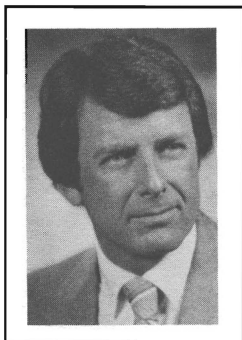
KREIDLER, MYRON "MIKE" (Democrat) Representative from the 22nd District located in Thurston County and including the state capitol. Elected in 1976 to the House. Born in 1943 in Tacoma. Graduated from Curtis H.S., Pacific University and the University of California at Los Angeles. He is a Group Health optometrist and with his wife, Lela, and their three children lives in Olympia.

REPRESENTATIVES



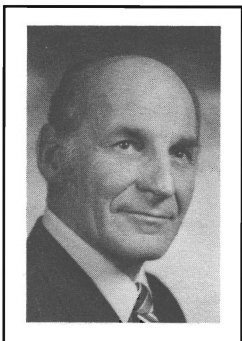
LEONARD, MARGARET J. (Republican) Representative from Legislative District 3, comprising 67 central city precincts in Spokane, serving her first term in the Legislature. She attended both the University of Washington and the Ellensburg Normal School. She is a member of the Grange, Business and Professional Women, Life member of the Disabled American Veterans, Rebekah Lodge, and the Spokane Humane Society. She and her husband, John, have one son.

LEWIS, JIM (Republican) Representative from Legislative District 14 comprising City of Yakima, parts of Selah, Naches and West Valley, serving his first term. Fourteen years as a radio and television news director, most of that time in the Yakima area. A member of Rotary and a volunteer with many organizations including KYVE TV, the local PBS affiliate. Born in Bakersfield, Calif. and attended school in Newhall, Calif. Jim, his wife, Lenore, and their two children attend the West Valley Church of The Nazarene. Jim is Corporate Manager of News and Public Affairs for Columbia Empire Broadcasting in Yakima.



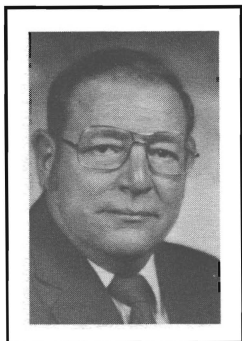
LUNDQUIST, HOMER (Republican) First term Representative, 40th District. Attended Seattle Pacific College, journeyman shipfitter, logger, home builder, general contractor, real estate broker. Served as school director and as Port Commissioner. Rotarian and Director of Skagit Group Ranch Homes, a nonprofit provider of care for troubled children.

LUX, EUGENE (Democrat) Representative from the present 35th and redistricted to 11th District of King County, comprising South Seattle, Renton, Tukwila, Kent and the industrial Green River Valley. Served interim Senate appointment, 1973, interim House appointment, 1975, and elected to the House in 1976, 1978, and 1980. Born in Lincoln, Nebraska, 1926, a building contractor in south King County for 35 years. Vice President Board of Group Health Cooperative of Puget Sound. Active in community affairs and consumer cooperatives.



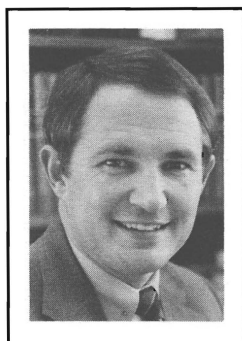
REPRESENTATIVES

MARTINIS, JOHN (Democrat) Representative from the 38th District of Snohomish County, serving his seventh term. A lifelong resident of the 38th District, born in 1930 in Everett. Ranking Minority member of the Transportation Committee. Member of the Natural Resources and Environmental Affairs Committee; Select Committee on Timber Tax; Select Committee on Forest Practices; Secretary, Legislative Transportation Committee. Member of Pacific Fisheries Management Council. Commissioner on Pacific Marine Fisheries Commission. John, a retail merchant for 23 years, is retired.



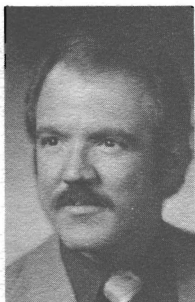
MAXIE, PEGGY JOAN (Democrat) Representative from 37th District, King County, serving sixth term. Born 1936, Amarillo, TX. Graduate, Seattle U., B.A. in Psychology; U of W, Master's Degree, Social Work; Honorary Doctor of Laws Degree, St. Martin's. Currently serves on Rules, Education, and Appropriations—Gen. Gov't. Committees. Listed in Intntl. Who's Who of Intellectuals (Cambridge, Eng.); Personalities of the West and Midwest; Who's Who Among Black Amer.; Who's Who in Amer. Politics; and Who's Who in Gov't. Owner: Peggy Maxie & Assoc., pub. rel./ad. firm.

McCORMICK, GERALDINE (Democrat) Representative from District 5 of Spokane County, is serving her seventh term and is democratic Caucus Secretary. Born in Spokane. Attended Whitworth College, and is a homemaker. Member: Eagles Lodge, Triangle Grange, and VFW Auxiliary. She has two daughters and three grandchildren.



McDONALD, DAN (Republican) First elected in 1978, represents the Bellevue, Kirkland, Redmond area of King County. Representative McDonald, his wife, Janie, and two children live in Bellevue as they have for the twelve years since his return from a tour as a Naval Officer in Vietnam. He is a graduate of U of W with a Bachelors degree in mechanical engineering and a masters degree in economics and is presently employed with a consulting firm. Representative McDonald is active in the King County Municipal League, Bellevue Chamber of Commerce, and American Public Works Association.

REPRESENTATIVES



McGINNIS, MICHAEL R. (Republican) Representative from the 6th District is serving his second term. A native of Spokane, Mike was educated at Eastern Washington University in Political Science. Presently working as owner/public relations of McGinnis Independent Paper Co. serving the Inland Empire with printing paper and industrial paper supplies. His wife, Liz, takes an active role in Mike's business, community and political involvements.

MITCHELL, JAMES B. (JIM) (Republican) Representative from the 39th District, comprising east Snohomish County, is chairman of the Human Services Committee and is serving his second term. He is a self-employed pharmacist, a graduate of the University of Washington and a veteran of World War II. He is a founder of the Snohomish County Blood Bank, a director on the Board of Providence Hospital, a past board member of the Stillaguamish Senior Citizen Center and a past member of the Washington State Board of Pharmacy. He and his wife, Nancy, have two sons, Bill and John.



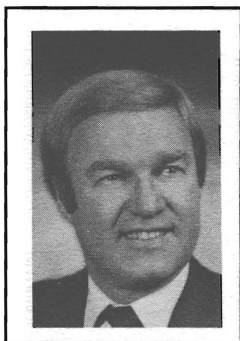
MONOHON, CAROL (Democrat) Representative from the 19th District comprising Grays Harbor and part of Pacific Counties. Born in 1945 in Raymond. First elected in 1976 to the House, appointed to the Senate in 1977, returned to House in 1979. Graduate of Grays Harbor College and U.P.S. with a B.A. in Political Science. Attended U.P.S. Law School. Carol, her husband, Robert, their two children, Bryon and Sharron, live in Raymond.

NELSON, R. P. "DICK" (Democrat) Representative from the 32nd District comprising the Ballard, Fremont, Green Lake, Greenwood, Phinney, University, and Wallingford neighborhoods of Seattle. First elected in 1976, is serving his third term in the House. Native of Seattle. Graduate of the University of Washington (Engineering) and the Massachusetts Institute of Technology. Self-employed technical consultant.



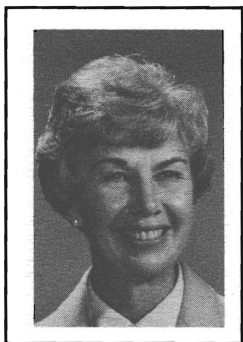
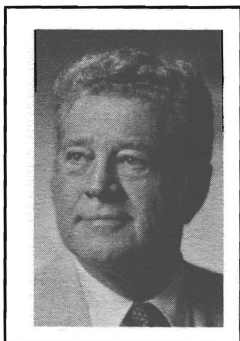
REPRESENTATIVES

NELSON, GARY A. (Republican) Majority Leader from the 21st District of Snohomish County (part), serving his fifth term. Born and raised in Spokane, received B.S. in Electrical Engineering from W.S.U. and M.S. from U of Wisconsin. Served as officer in Air Force. Staff Manager with private utility. Director of National Conference of State Legislators, Board of Luther Child Center, Board of Snohomish County Boys Club. Past Edmonds City Councilman and planning commission member. His wife, JoAnne, is an educator and author. They have three sons, Grant, Geoff and Greg.



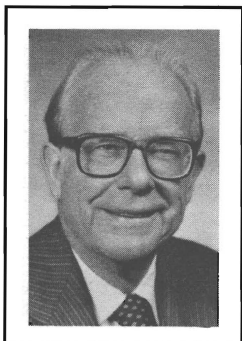
NICKELL, C. R. (Dick) (Republican) Representative from the 12th District comprised of Chelan and Douglas Counties and parts of Okanogan, Grant and Kittitas Counties. Appointed to fill the vacancy left by Rollie Schmitt and elected into office in 1981. Dick was sheriff of Chelan County for 20 years and is past president of the State Sheriff and Police Chief's Association. He is active in the Red Cross and is a former member of the Washington State Committee on Law and Justice. He lives in Wenatchee with his wife, Pat, and has a daughter, Patricia, and a son, Hunter.

NISBET, ANDREW (Republican) Representative from the 24th District comprising Clallam, Jefferson, Mason and part of Thurston Counties, is serving his second term. Has a B.A. in Education from the University of Georgia, and an M.A. in Public Law from Columbia University. Entered the Army as a private and retired 33 years later as an Infantry Colonel. He and his wife, Haroldine, have four grown children and two grandchildren. Nisbet is Chairman of Appropriations—Human Services Committee and serves on the Ways and Means Committee.



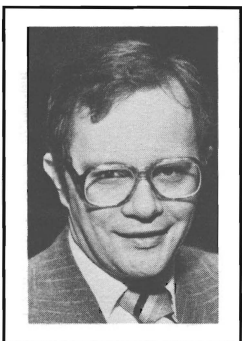
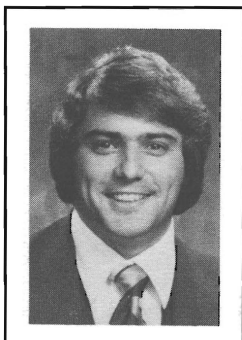
NORTH, FRANCES C. (Democrat) Representative from the 47th District and redistricted to the 45th District of King County, is serving her fifth term. Native to the Renton area, she attended Seattle University. A North Bend Councilwoman for eight years, she has been active in the National Secretaries Association, Business and Professional Women, a director of the Sno Valley Development Center Board, a member of Board of Directors Washington Parks Foundation, member Municipal Research Council and Council of State Governments. She and her husband, James M. North, have lived in the Snoqualmie Valley for 35 years.

REPRESENTATIVES



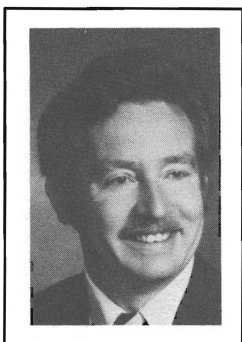
O'BRIEN, JOHN L. (Democrat) Representative from the present 35th and redistricted to 37th District of King County, is serving his twentieth term. Caucus Chairman in 1951, Minority Floor Leader 1953, Speaker of the House from 1955 to 1962. Minority Leader 1967-1971 and Speaker Pro Tempore 1973-1980. Democratic Parliamentary Leader, 1981. Graduate of business college, attended Western Institute of Professional Accounting and is a CPA. Past president and member of Executive Committee of National Conference of State Legislative Leaders. Member, Knights of Columbus, Washington Athletic Club, and Rainier Chamber of Commerce. He and his wife, Mary, have six children.

OWEN, BRAD (Democrat) Is serving his third term from the present 24th and redistricted to 35th District. Owen has been a successful small businessman and prominent member of the community for the past 10 years. He formerly served as Finance Commissioner for the City of Shelton. Owen is a leader in the field of corrections and serves on the Institutions Committee. He also serves on the Natural Resources and Transportation Committees.



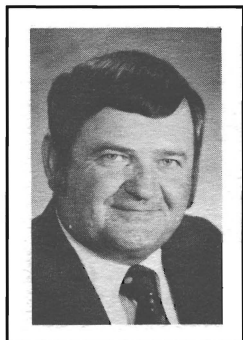
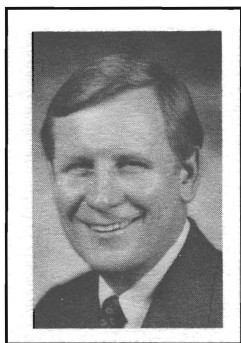
PADDEN, MIKE (Republican) Representative from Legislative District 4, comprising the Spokane Valley, Mead, Southeastern Spokane County. Graduate, Gonzaga University with a Degree in Political Science, and also a graduate of Gonzaga School of Law. He is a practicing attorney, and a member of the Spokane County Bar Association, the Washington State Bar Association, the Spokane Valley Chamber of Commerce, and the Spokane Valley Knights of Columbus. Mike and his wife, Laura, have two boys, Justin, 3 1/2 years old and Shaun, 19 months.

PATRICK, MIKE (Republican) Representative from Legislative District 11 comprising the Renton and Kent areas of South King County, serving his first term. Mike has been redistricted into the 47th Legislative District. He is a 16-year veteran of the Seattle Police Dept. and a past President of the Seattle Police Officers Guild. He is presently a board member for the N.W. chapter of the Muscular Dystrophy Assn. Mike is vice chairman of the House Labor and Economic Development Com., and Chairman of the Transportation Sub-Committee State Highways. Mike and his wife, Lois, have four children, Michael, Jeffrey, Shanna and Jennifer.



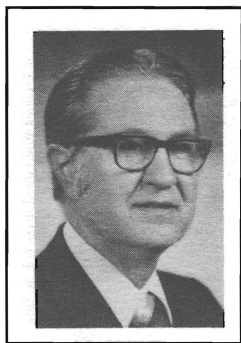
REPRESENTATIVES

POLK, WILLIAM M. (Republican) Speaker, House of Representatives is from the 41st District in King County, serving his sixth term. Born in 1935 in Cleburne, Texas, raised in Haddonfield, New Jersey, a graduate of Cornell University with a Bachelor of Architecture. He is a principal in the architectural firm of John Graham Company; a member of the American Institute of Architects; College Club; National Director, American Legislative Exchange Council; Ryther Child Center; Rotary; and is a Director of Cornish School for Allied Arts. He and his wife, Karla, and three children, Lucy, Beth and Andy, live on Mercer Island.



PRINCE, EUGENE A. (Republican) Representative from Legislative District 9 comprising Asotin, Garfield, Columbia, and parts of Adams, Franklin and Whitman Counties, is serving his first term as a Legislator. He first served in '59 as a Bill Clerk, '63 as an Asst. Chief Clerk, '65 as Comm. Clerk, '67, '69, '71 as House Sgt. at Arms. Graduate WSU with a B.S. in Ag. Eng., is engaged in farming. Member: Grange, Wash. Assn. Wheat Growers, Farm Bureau and Chamber of Commerce. Served as President of Wash. Assn. of Wheat Growers. He and wife, Patsy, have two sons, two daughters and four grandchildren.

PRUITT, PAUL (Democrat) Representative from the 34th District, King County serving his second term. Born in Shelton, Nebraska he attended the University of Puget Sound and Yale Divinity School. He is a member of the West Seattle AARP and on the Board of Senior Centers of West Seattle and is on the State Advisory Council for the Aging. He serves on the House Board of Ethics; and Human Services, Appropriations—Human Services, Ethics, Law and Justice Committees. He and his wife, Mary Margaret, live in West Seattle.



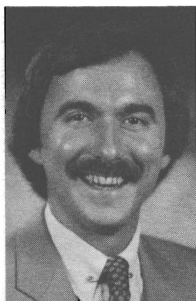
RINEHART, NITA (Democrat) Represents the present 43rd and redistricted to 46th District of King County. Born, Texarkana, Texas. Graduate Southern Methodist University. B.A. in English Literature, B.A. in Music. Member of League of Women Voters; Mortar Board Alumni; Women's Political Caucus; Board of Directors, Washington State Chapter, National Sudden Infant Death Syndrome Foundation; Intergovernmental Fiscal Policies Task Force; National Conference of State Legislatures.

REPRESENTATIVES



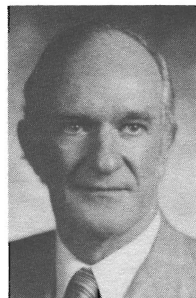
ROSBACH, WILMA (Republican) Representative from the 20th District comprising Lewis and the western portion of Thurston Counties, is serving her second term. For the past 25 years, she and her husband, Chuck, have owned and operated Children's Apparel Shop in Chehalis. A director of Lewis Federal Savings and Loan and active in community and business affairs. She and her husband have four grown children.

RUST, NANCY S. (Democrat) Representative elected in the 44th District and redistricted into the 1st District in northwest Seattle and King County is serving her first term. Born in Iowa City, Iowa in 1928. Earned B.A. and M.S. in mathematics at the University of Iowa. Served as Vice President League of Women Voters, Board member Municipal League, Trustee Shoreline Community College, member King County Energy Project. Nancy and her husband, Dick, have six grown children and one granddaughter.



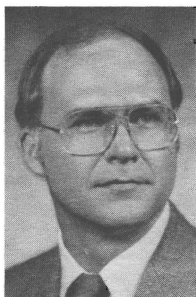
SALATINO, JAMES E. (Democrat) Representative from the 27th District in Pierce County. Elected in 1976, is now serving his third term in the House. He currently serves on Ethics, Law and Justice as Ranking Minority Member; Appropriations—Education and Financial Institutions and Insurance Committees, holds the title of Asst. Floor Leader. Born in 1949 in Tacoma. Graduate of the University of Puget Sound. Currently a teacher at Stadium High School in Tacoma.

SANDERS, PAUL (Republican) Represents 48th District, King County. Serving third term. Active in Bellevue community 22 years. Co-founder, Wash. Aviation Council; Director, Helping Hands for Disabled; Rotary; Church of Resurrection; Federated Community Clubs; Issaquah PTA Council; Wash. State Civil Air Patrol Advisory Council; Boeing executive. Chairman, House Committee on Labor & Economic Development; member Revenue, Financial Institutions & Insurance, Redistricting, Joint Select International Trade Committees. He and his wife, Helen, have four children.



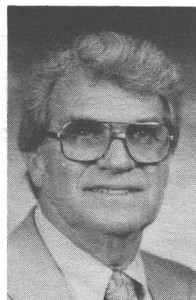
REPRESENTATIVES

SCHMIDT, KAREN (Republican) Representative from the 23rd District, Kitsap County from Bremerton to Point No Point including Bainbridge Island. Karen attended Arizona State University and worked for various airlines prior to opening her own travel agency—Go Travel. She has been active in civic groups including past president of the Bainbridge Chamber of Commerce, secretary-treasurer North Olympic Chamber of Commerce and others which led to being named "Rotary Woman of the Year 1979." Karen lives on Bainbridge Island with her husband, Gary, a Captain in the Merchant Marine, and sons, Geoffrey and Gavin.



SCOTT, GARY H. (Democrat) Representative from the 39th District, Snohomish County. Born in 1942, residing in Snohomish County for 39 years. Attended Everett Community College and Western Washington State College. He is currently self employed. He and his wife, Kathy, have two children, Stacey and Kari.

SHERMAN, MARION KYLE (Democrat) Representative from the 47th District is serving her fourth term. Democratic Caucus Vice Chairman, Board member Maple Valley Senior Center, Maple Valley Community Center, Board Green River Community College Foundation, League of Women Voters, Maple Valley Chamber of Commerce, graduate of U. of W. She and husband, Len, an engineer, are parents of two children.



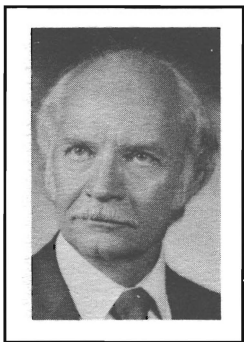
SMITH, CURTIS P. "CURT" (Republican) Representative from the 13th District comprised of Kittitas, most of Grant and part of Yakima Counties, serving his second term. Born in Nebraska, attended University of Nebraska, Veteran of WW II, farmer in the Columbia Basin since 1955 and Irrigation Director sixteen years for Quincy Columbia Basin Irrigation District. Member of United Church of Christ. He and wife, Lucille, have two children, both University graduates. Curt is Chairman of the Agriculture Committee, and serves on the Labor and Economic Development and Transportation Committees.

REPRESENTATIVES



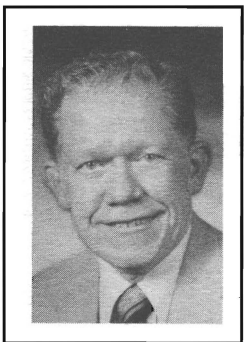
SOMMERS, HELEN (Democrat) Representative from the 36th District in Seattle, serving her fifth term. Earned B.A. and M.A. in economics from University of Washington. Employed by King County Council. Member: Seattle Economists Club, League of Women Voters and National Organization for Women. Board member, Easter Seal Society.

SPRAGUE, WALTER W. (Republican) Representative from the 21st District is serving his second term. Born in Tacoma in 1918, he is a commercial landscaping contractor. He attended Pacific Lutheran University and served in the U.S. Navy in World War II, on the Lynnwood City Council and was Chairman of the City's Park Board. He and his wife, Fern, have two children and four grandchildren.



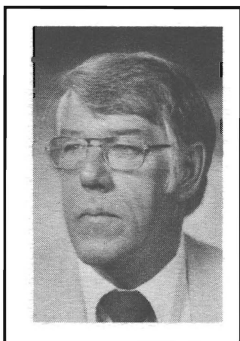
STRATTON, LOIS J. (Democrat) Representative from the 3rd Legislative District, Spokane County. Appointed to House vacancy December 31, 1979, elected to first term in 1980. Born in Springdale, Washington, attended Kinman Business University, Spokane. Homemaker, and community worker. She serves on Boards of West Central Community Center, Executive Women International and American Heart Association. Member of Natural Resources, Human Services and Local Government Committees. Co-Chair of Joint Select Committee on Illegal Drug Trafficking Enforcement. She and husband, Al, have five grown children.

STRUTHERS, GENE (Republican) Representative from the 16th District comprising Walla Walla County, part of Franklin and Benton Counties. Serving his third term. Majority Caucus Whip; Vice Chairman Ways and Means Committee; a member of the House Rules and Institutions Committees. Ex-officio member State Gambling Commission. A veteran of World War II, born in Walla Walla. Retired businessman with farming interest. He and his wife, Bonny, have six grown children.



REPRESENTATIVES

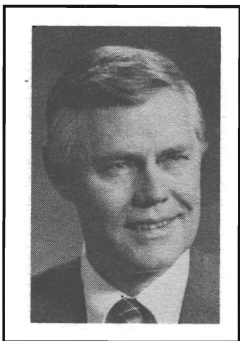
TAYLOR, REN (Republican) Representative from the 4th District serving his second term. A native of Washington, born in Tacoma. A veteran of World War II. A graduate of the University of Washington and Columbia University. He is a member of the Board of Trustees: Spokane Valley General Hospital, Eastern Washington Branch of Washington Children's Home Society, St. Luke's Hospital, and Spokane Symphony Society; Spokane Valley Chamber of Commerce, and Rotary Club. He and his wife, Virginia, have three sons, Ross, Mark and Paul.



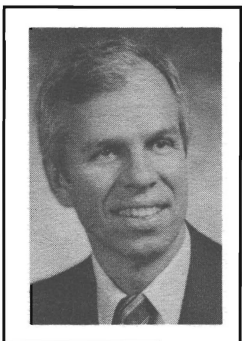
TEUTSCH, DELORES E. (Republican) Elected to second term in Legislature, represents 45th District in Northeast King County. Chairman of Higher Education Committee, member of the Human Services and Appropriations—Education Committees. Delores has also served on the Local Government Committee. A Seattle native and 25-year resident of Kirkland, presently a member of the Washington Council on International Trade, President of King County East Convention and Visitors Bureau, and Chairman, Advisory Board for the Bellevue Community College Women's Center. Delores and husband, John, have three children, Terri, Jay and Jill.



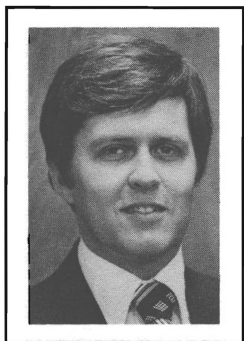
THOMPSON, ALAN (Democrat) Representative from the 18th District comprising Cowlitz and Clark Counties, is serving his ninth term. Served in the Navy. Earned B.A. degree at University of California, Berkeley. He and his wife, Barbara, publish three weekly publications: the Cowlitz County Advocate, the Lewis County News, and the Cowlitz Valley Sternwheeler. They have four sons.



TILLY, EARL F. (Republican) Representative from the 12th District is serving his fifth term and is the Majority Party Caucus Chairman. A member of Appropriations—Human Services, Ethics, Law and Justice, and Rules Committees. Chairman of the House Personnel Committee. Vice Chairman of the Organized Crime Intelligence Advisory Committee. Former owner of Tilly Equipment Inc. A graduate of the U. of W. in Business Administration. Attended Pacific Lutheran University and Wenatchee Valley College. Member of the Wenatchee Rotary Club, Wenatchee Valley College Foundation, and Grace Lutheran Church. He and his wife, Barbara, live in Wenatchee with their three children, Kristen, Bart and Shannon.

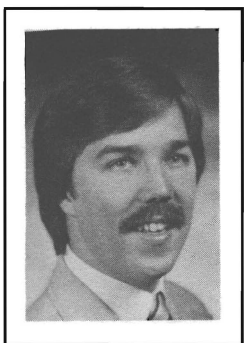
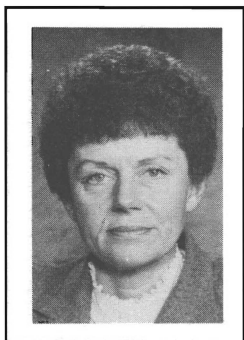


REPRESENTATIVES



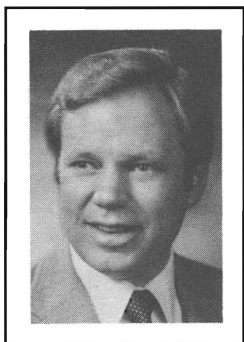
TUPPER, STEVE (Republican) Representative from the present 44th District redistricted to the 1st District comprising northwest Seattle and North King County, is serving his second term. A graduate of Principia College with a B.A. in Political Science, he is a former Army officer and Vietnam veteran, and is employed as an account supervisor for Kraft Smith Advertising and Public Relations. Steve lives in Seattle's Broadview Area where he is President of the Broadview Community Council, and is a member of the Shoreline YMCA Board, Ballard Rotary, and Shoreline Chamber of Commerce.

VALLE, GEORGETTE (Democrat) Representative of the 31st Legislative District of King County. Born in Blue Earth, Minnesota. Graduate of University of Minnesota with a B.S. degree in Occupational Therapy. Currently serving her sixth term in the legislature. She and her husband, Odd, a dentist, have two children, Peter and Christine.



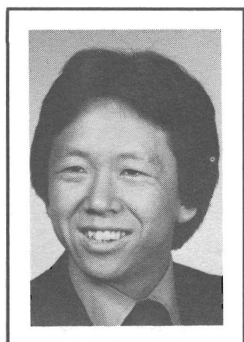
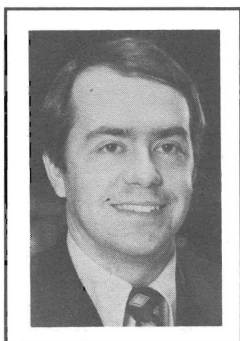
VANDER STOEP, J. (Republican) Representative from the 20th District including Lewis and Western Thurston Counties, is serving his first term. Born in Chehalis in 1957, Vander Stoep is a graduate of Western Washington University. He is employed by InterPacific Investors as a security broker. He is a member of the Chehalis Chamber of Commerce, the Centralia Kiwanis and Westminster Presbyterian Church.

VAN DYKEN, ROGER L. (Republican) Representative from the 42nd District in Whatcom County, serving his second term. Owns and operates management services agency, sailboat charter business, and a farm. Has served in Air Force in Vietnam and Europe, currently Major in Air Force Reserve. Born in 1945. He and his wife, Marlene, have three children, Aminta, Justin and Daniel.



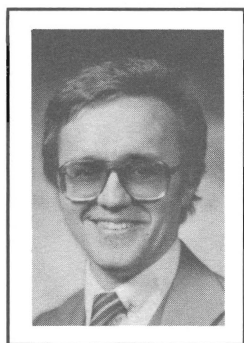
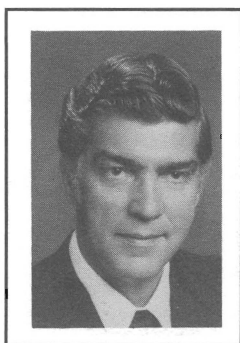
REPRESENTATIVES

WALK, GEORGE W. (Democrat) Representative from the 25th District in north central Pierce County. Serving his third term. Born in 1949 in Puyallup, attended Puyallup Public Schools and earned B.A. and M.A. degrees from Western Washington State College. He and his wife, Jill, have two children.



WANG, ART (Democrat) Representative from the 27th District, Pierce County. Serving his first term after four years on the legislative research staff. Born in Boston in 1949. Graduated Franconia College, N.H. Former VISTA volunteer for Tacoma Urban League; director of job training programs, Tacoma Community House; grants consultant, United Methodist Church; instructor in Urban Studies, U.P.S. Currently enrolled in U.P.S. Law School.

WARNKE, FRANK J. (Democrat) Representative from the 30th and redistricted into the 31st District, South King County. Served in the 1965-67 and 1973-75, 75-77, 77-79, 80, 81 sessions. Born in Harlem, Montana in 1933. Studied Political Science at Central Washington State College and the University of Washington. Employed as Executive Director of the Public School Employees of Washington. Married and has two children.



WILLIAMS, BOB (Republican) Representative from the 18th redistricted to 19thA District comprising Cowlitz and Wahkiakum Counties. He is serving his second term in the House. Chairman of: Appropriations—General Government, Select Committee on Deregulation and Productivity, and Joint Committee on Regulatory Review; member of the Legislative Budget Committee. Certified Public Accountant. Member of the Longview Rotary Club, Toastmasters and Calvary Community Church. He and his wife, Jane, have three sons, Robbie, Kevin and Michael.

REPRESENTATIVES



WILSON, SIMEON R. "SIM" (Republican) Representative from the 10th District of northwest Snohomish County, Island County, and south and east Skagit County. Elected in 1972 to his first term, re-elected, 1974, 1976, 1978, 1980. Born in Hood River, Oregon, in 1927. Attended Everett Community College, B.A., Washington State University, M.F.A., University of Washington. Served in the U.S. Navy 1945-46, 1951-54. Publisher of the *Marysville Globe and Arlington Times*.

WINSLEY, SHIRLEY J. (Republican) Representing 28th District, Pierce County, comprising communities of Lakewood, University Place, Fircrest, Steilacoom, and Tillicum. Appointed to House 1974, serving third term. Graduate, Tacoma Community College, Pacific Lutheran University. Member, Board of Governors, Fort Steilacoom Community College Foundation; Board Member, Legislative Chairman, Lakewood Area Chamber of Commerce; League of Women Voters; Lakewood Women in Business; Former Member, Fircrest Planning Commission. Ethics, Law and Justice, Human Services and Rules Committees. She and her husband, Gordon, have a married son and daughter and two grandchildren.



CHIECHI, VITO T. (Republican) Chief Clerk of the House of Representatives. Public Affairs Staff Executive and Consultant with over 30 years experience in the public and private sectors in local, state and federal government relations. Former Executive Assistant to the Speaker of the House, 1973-76. Born in 1925 in Seattle, holds a degree in Finance from Seattle University. Vito and his wife, Dolores, have nine children and live in Olympia.

TEMIR, GEORGE (Republican) Sergeant At Arms of the House of Representatives. An Air Force veteran, he has been in Marketing and Management positions the last 20 years. Senate employee in 1973. Active in civic and charitable organizations. He and his wife, Ana, have four grown children.

