

WASHINGTON - 57-1433
PAMPHLET

DIRECTORY

ADAMS	FISHER	LITCHMAN, JR.	PETRIE
ANDERSON	FOLSOM	LONEY	PURVIS
ARNASON	FRAYN	LORIMER	RASNUSSEN
BAILEY	GALLAGHER	LYBECKER	RIDGWAY
BALL	GORDON	MARDESICH	ROBISON
BEIERLEIN	GRIFFITH	MARTIN	ROSENBERG
BERNETHY	HALLAUER	MAST	RUOFF
BOZARTH	HANNA	MAY	SANDISON
BROWN	HANSEN	MCBEATH	SAVAGE
BYRNE	HANSON	MCUTCHEON	SAWYER
CANFIELD	HARRIS	MCDERMOTT	SHROPSHIRE
CARMICHAEL	HAWLEY	MFADDEN, JR.	SILER
CARTY	HECKENDORF	MILLER, C.	SMITH
CHYTIL	HENRY	MILLER, F.	STOCKER
CLARK, C.	HESS	MUNDY	STROM
CLARK, N.	HOLLIDAY	MUNRO	SWAYZE
COMFORT	HUHTA	MUNSEY	TESTU
CONNOR	HURLEY	NEAL	TIMM
COONEV	HYPPA	NEILL	WANG
DONOHUE	JOHNSTON	OAKES	WEDEKIND
DORE	JONESAD	O'BRIEN	WEITZMAN
EDWARDS	JONES, M. K.	OLSEN	WINTLER
ELDRIDGE	KING	OLSON	YEAROUT
ELWAY	KIRK	OVENELL	YOUNG
FARRAR	KUPKA	PENCE	

Washington State Legislature

34th.
Session
1955

WASHINGTON STATE LIBRARY
OLYMPIA, WASHINGTON

Published By
EARL COE
Secretary of State

TABLE OF CONTENTS

	Page
Preface.	1
Functions of the Legislature	2
Senate Roster.	4
Senate Biographies	5
House of Representatives Roster.	18
House of Representatives Biographies	20
Legislative District Map of Washington	30
Senate Standing Committees	47
Senate Individual Committee Assignments.	49
House of Representatives - Standing Committees	53
House of Representatives Individual - Committee Assignments	56
The Press.	62

PREFACE

This "Pictorial Directory of 1955 Washington State Legislature" is designed to provide biographical material about the members of the legislature and the information of the general public.

Many states publish official "Blue Books" containing information about their public officials. Since lack of funds makes this impossible in Washington, we offer this smaller volume.

I hope that members of the 34th Legislature will find this a useful reference work and a memento of their service in this body.

The State Legislature

The Legislature is the paramount branch of American Government. It makes the state laws, controls the expenditures and determines the duties which the administrative authorities perform.

Without action by the state legislature, there would be no elections, no registration, no public schools and no municipalities.

It regulates the citizen's civil rights and duties, secures him in the tenure of his property, and makes most of the rules that govern his daily movements.

In presenting this volume, I wish to express my sincere appreciation and thanks to the Speaker of the House, the President Pro-Tem of the Senate, the Chief Clerk of the House and the Secretary of the Senate for their cooperation in providing information and in arranging for the pictures used in this book.



E A R L C O E
Secretary of State

**THE SENATE
OF THE STATE
OF
WASHINGTON**

STATE SENATE

Members as of January 10, 1955
(ALPHABETICAL)

NAME	P. O. ADDRESS	Dis. No.	PARTY
① Andrews, Lloyd J.....	R.F.D. 1, Mead.....	5	Republican
Bargreen, Howard S.....	500 Sharoncrest, Everett.....	38	Democratic
Barlow, R. C. "Russ"....	15 Barlow Rd. S.W., Tacoma.....	26	Republican
① Clark, Asa V.....	305 Oak Street, Pullman.....	9	Republican
① Copeland, Henry J.....	1204 Portland Ave., Walla Walla...	11	Republican
Cowen, Dr. David C.....	S. 223 Coeur d'Alene St., Spokane..	7	Democratic
Dahl, B. J.....	303 W. Colville Ave., Chewelah.....	2	Republican
① Dixon, Gerald G.....	3726 S. Tacoma Ave., Tacoma.....	28	Democratic
Flanagan, E. J.....	Route 1, Wapato.....	15	Republican
① French, Robert M.....	Okanogan	1	Republican
Gallagher, Michael J.....	8045 Burke Ave., Seattle.....	45	Democratic
① Ganders, Stanton	Route 1, Bickleton.....	16	Democratic
① Gissberg, William A.....	Route 2, Marysville.....	39	Democratic
Goodloe, William C.....	4262 8th Ave. N.E., Seattle.....	32	Republican
Greive, R. R. "Bob".....	4127 45th Ave. S.W., Seattle.....	34	Democratic
① Hall, Thomas C.....	Skamokawa	18	Republican
Happy, John H.....	W. 824 Cliff, Spokane.....	6	Republican
① Hoff, Neil J.....	405 6th Ave., Tacoma.....	27	Republican
Hofmeister, Louis E.....	P.O. Box 203, Enumelaw.....	30	Democratic
① Ivy, Eugene D.....	214 Linden Way, Yakima.....	14	Republican
Jackson, H. N. "Barney"	5625 S. "J" St., Tacoma.....	29	Democratic
① Keefe, James	W. 412 Glass, Spokane.....	3	Democratic
① Knoblauch, Reuben A....	P.O. Box 363, Sumner.....	25	Democratic
① Lennart, Ernest W.....	Route 1, Everson.....	41	Republican
① Lindsay, Roderick A.....	E. 1230 20th Ave., Spokane.....	4	Democratic
① Luvera, Paul N.....	Anacortes	40	Republican
① McMullen, Dale	6818 Middle Way, Vancouver.....	17	Republican
① Nordquist, Dale M.....	505 S. Washington, Centralia.....	20	Republican
Nunamaker, Homer O.....	701 11th St., Bellingham.....	42	Democratic
① Pearson, Francis.....	132 W. 4th, Port Angeles.....	24	Democratic
Peterson, Ted G.....	2355 Blue Ridge Dr., Seattle.....	44	Republican
Raugust, W. C.....	Odessa	8	Republican
Riley, Edward F.....	1619 9th Ave., Seattle.....	35	Democratic
① Rogers, Jack H.....	Star Route 1, Box 76, Bremerton...	23	Democratic
Rosellini, Albert D.....	3838 Cascadia, Seattle.....	33	Democratic
① Roup, Howard	Asotin	10	Democratic
Ryder, John N.....	6811 55th Ave. N.E., Seattle.....	46	Republican
① Sears, Carlton I.....	2412 S. Columbia, Olympia.....	22	Republican
Shannon, William D.....	1802 Parkside Dr., Seattle.....	43	Republican
Sutherland, Patrick D....	1526 38th Ave., Seattle.....	37	Democratic
Todd, John N.....	7210 E. Mercer Way, Mercer Island..	31	Democratic
① Wall, Harry	Chelan	12	Republican
Washington, Nat.....	42 C St., Ephrata.....	13	Democratic
① Wilson, Theodore.....	South Bend.....	19	Republican
Winberg, Andrew.....	110 W. 3rd St., Aberdeen.....	21	Democratic
Zednick, Victor.....	1611 6th Ave. W., Seattle.....	36	Republican

① Holdover—Position subject to 1956 State General Election.

Senators

ANDREWS, LLOYD J. (Republican) Senator from the 5th District of Spokane County was born in Dutton, Montana in 1920. He holds a B. S. Degree from Washington State College and is engaged in farming. During World War II he served in the U. S. Navy and is a member of Masons, American Legion, Kiwanis, and the Grange. He was married in June, 1942.



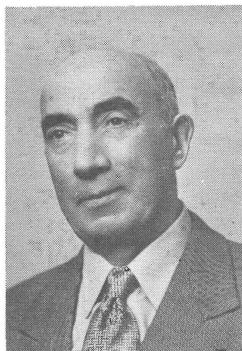
BARGREEN, HOWARD (Democrat) Senator from the 38th District. Snohomish County was born in Everett in 1906. He was first appointed to the Senate in 1940 serving one 2 year term and two 4 year terms in the Senate and one 2 year term in the House of Representatives. He is a graduate of the University of Washington is a merchant in Everett. He is affiliated with the Elks, Mason, Redman, Sons of Norway, Yacht Club and Rotary. Was married in 1931.

BARLOW, RUSSELL C. (Republican) Senator from the 26th District of Pierce County, was born in Tacoma in 1893. First elected in 1950 he was re-elected in 1954. Attended the Tacoma Public Schools and then receiving his B. S. Degree in 1915 from the University of Washington. He is President of C. S. Barlow & sons, Inc. Building Materials. Served as a 1st Lieutenant in World War I. He is affiliated with the Masons, Scottish Rite, York Rite, Shrine, Elks Club and Sigma Alpha Epsilon Fraternity. Married in 1917.



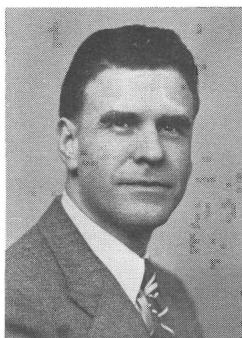
CLARK, ASA V. (Republican) Senator from the 9th District of Whitman County, was born in Whitman County in 1899. First elected to the House in 1940 and served 5 regular terms and 2 special sessions. Sen. Clark was appointed to the Senate to fill the vacancy left by the appointment of Ernest C. Huntley to the Tax Commission and was elected in 1950 and 1954. He attended Washington State College and was a member of the State Guard. He is married.

Senators



COPELAND, HENRY J. (Republican) Senator from the 11th District of Walla Walla County, was born in Walla Walla County in 1885. He was first elected in 1934 and has served 8 terms and three special sessions in the Senate and one term in the House. He was County Commissioner from 1928 to 1934. He attended the Walla Walla public schools and Walla Walla College. A farmer, he is a member of the Odd Fellows, Elks and Masons. He is married.

COWEN, DAVID C. DR. (Democrat) Senator from the 7th District of Spokane County, was born in Portland, Oregon in 1901. He was first elected to the House in 1934 and has served continuously for eight years in the House and fourteen years in the Senate. He served in the R.O.T.C. in 1917 and is a Mason, Shriner and Moose.



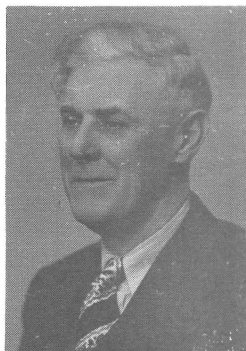
DAHL, BJARNE J. (Republican) Senator from the 2nd District of Stevens and Pend Oreille Counties, was born in Norway in 1898. First elected to the Senate in 1942, he is serving his seventh term. Now a newspaper publisher, he has been city councilman and served overseas in World War I. He attended high school and is a member of Sigma Delta Chi, American Legion, Kiwanis and Chewelah Chamber of Commerce. He is married.

DIXON, GERALD G. "GERRY" (Democrat) Senator from the 28th District of Pierce County, was born in London, England, in 1884. First elected to the House in 1934, where he served three sessions, he is now serving his 8th regular session in the Senate. He was Democratic State Committeeman from 1941 to 1944. A locomotive Engineer, he has had one year of college and served with the Selective Service System during World War II. He is married.



Senators

FLANAGAN, E. J. (Republican) Senator from the 15th District of Yakima County, was born in Wisconsin in 1882. First elected in 1942, he served in the Special Session of 1944 and the 1945 Regular Session. Re-elected in 1946, 1950 and 1954. A rancher, Sen. Flanagan resides on Route 1, Wapato.



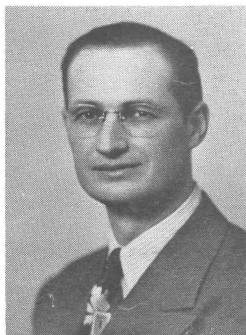
FRENCH, ROBERT M. (Republican) Senator from the 1st District of Okanogan County, was born in Okanogan in 1899. He was first elected in 1936 and has served 8 regular and one special session in the House of Representatives and 3 terms in the Senate having been elected in 1948 and re-elected in 1952. He is a graduate of Washington State College, receiving his B.S. Degree in Agriculture and is a stockman. He is a member of the Masons, Grange, Elks and Phi Delta Theta. *Resigned Jan. 4, 1955. (See Zahn)*



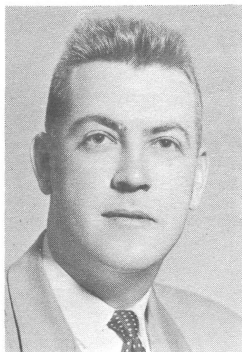
GALLAGHER, MICHAEL J. (Democrat) Senator from the 45th District of King County, was born in Indianapolis, Indiana. He was elected to the House in 1942 and appointed to the Senate in 1945. He was re-elected in 1950 and 1954. He attended high school and business college and is a safety engineer. He was married in 1937.



GANDERS, STANTON (Democrat) Senator from the 16th District comprising Benton, Franklin, Klickitat and Skamania Counties. He was born in Bickleton in 1912. When Earl Coe was appointed Secretary of State in January 1948, Stanton Ganders was appointed to finish out the unexpired term in the Senate. He was elected in 1948 and again in 1952. He is a University of Washington graduate and is a farmer. He served with the Army Air Force from December 1941 to October 1945. He is married.

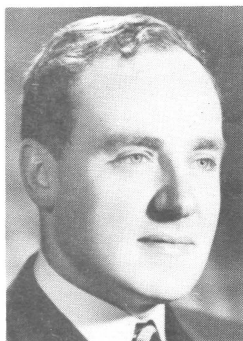


Senators



GISSBERG, WILLIAM A. (Democrat) Senator from the 39th District of Island and Snohomish Counties was born in Everett, Washington in 1922. He is in the U. S. Navy Reserve and the U. S. Marine Corps Reserves and member of the Elks. He is an attorney having attended the University of Washington where he received his B.S. and LL.B Degrees. The Gissbergs were married in 1946.

GOODLOE, WILLIAM C. (Republican) Senator from the 32nd District of King County. He was born in Lexington, Kentucky in 1919. He graduated from the University of Washington with B.S. in Law and LL.B. Degree and is now an attorney. Elected in 1950 he is serving his third regular session. He served five years in the U. S. Navy. He was married in 1941.



GREIVE, R. R. "BOB" (Democrat) Senator from the 34th District of King County, was born in Seattle, Washington in 1919. He was first elected to the Senate in 1946 and re-elected in 1950 and 1954. He is a merchandise broker and was in the armed forces for two and a half years during World War II. He is a member of Kiwanis, American Legion, Phi Alpha Delta, the West Seattle Sportsman Club. Senator Greive is married.

HALL, TOM (Republican) Senator from the 18th District of Cowlitz and Wahkiakum Counties, was born in Minnesota in 1908. He was elected to the House in 1946 and to the Senate in 1948 and re-elected in 1952. A college graduate, he is a farmer and a member of the Grange. He was married in 1931.



Senators

HAPPY, JOHN H. (Republican) Senator from the 6th District of Spokane County, was born in Spokane in 1895. He was elected to the Senate in 1946 and again in 1954. A graduate of the University of Washington he has his own Insurance Agency. He served in the First World War as a 1st Lieutenant in the Field Artillery. Senator Happy was married in 1929.



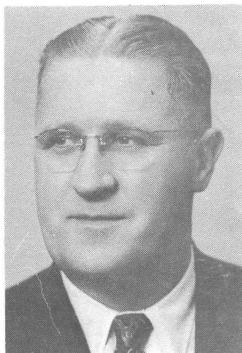
HOFF, NEIL J. (Republican) Senator from the 27th District of Pierce County was born in Los Angeles, California in 1921. He was elected to the House in 1950 and to the Senate in 1952. He received his B.S. and LL.B. Degree from the University of Washington. He served in the U. S. Army. He is affiliated with Alpha Psi Omega, Phi Alpha Delta and Phi Kappa Delta, honorary fraternities. He belongs to the VFW, 40 et 8, American Legion, Eagles, Sons of Norway, Scandanavian fraternity. Hoff is married.

HOFMEISTER, LOUIS E. (Democrat) Senator from the 30th District of King County, a native of Washington, was born in 1893. Was first elected to the House in 1942 and served four terms and was elected to the Senate in 1954. He served as City Councilman of Enumclaw and is affiliated with the Veterans of Foreign Wars, American Legion, Loyal Order of Moose and Eagles. He was married on September 26, 1927.



IVY, EUGENE D. (Republican) Senator from the 14th District of Yakima County, was born in Bossburg, Washington in September, 1897. He is an attorney having received his LL.B. Degree in 1922 at the University of Washington. Served in the U. S. Army Quartermaster Corps 1918-1919. He belongs to Masonic Bodies, Elks, Eagles, American Legion, Gyro International and the Delta Chi Fraternity. Widowed in 1936 he married again in 1944.

Senators



JACKSON, H. N. "BARNEY" (Democrat) Senator from the 29th District of Pierce County, was born in St. Paul, Minn., in 1904. He was first elected in 1937 and has served 2 sessions in the House and seven in the Senate. He attended high school and Tacoma City College. He served in the U. S. Navy in World War II, and is a member of the Masons, Shrine, Grotto, Royal Arch, Elks, Eagles, Scandinavian Fraternity of America and Sons of Norway. Married in 1926.

KEEFE, JAMES (Democrat) Senator from the 3rd District of Spokane County, was born in New York City in 1908. A graduate of Gonzaga High School. He is a theatre manager. Elected in 1948 he was re-elected in 1952. Served as Chairman of Public Morals in 1951. Married in 1933.



KNOBLAUCH, REUBEN A. (Democrat) Senator from the 25th District of Pierce County, was born in Sumner, Washington, in 1914. He was first elected to the House in 1946 and again in 1948 and 1950. Elected Senator in 1952. He is a high school graduate and is a farmer. He spent four years in the U. S. Army during World War II, three of those years overseas. He is a member of the Grange, Active Club, Eagles, American Legion and VFW. He has held the position of Precinct Committeeman and District Chairman.

LENNART, ERNEST W. (Republican) Senator from the 41st District of Whatcom County. He was born in Sweden in 1893. First elected to the House in 1940, re-elected in 1942, 1950 and to the Senate in 1952. He has been a P.U.D. Commissioner and has served on the school board. He has a college education and is engaged in farming, seed and cold storage business. He belongs to the Masons, Shrine, VFW, American Legion, Grange and Farm Bureau. The Lennarts were married in 1920.



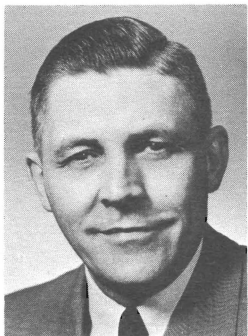
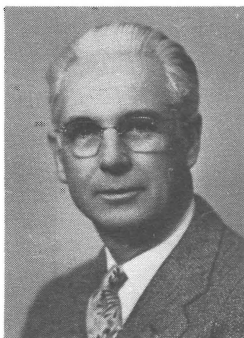
Senators

LINDSAY, RODERICK A. (Democrat) Senator from the 4th District of Spokane County, was born in Seattle, Washington in 1903. First elected to the House in 1938 and to the Senate in 1940 and 1952. A graduate of the University of Southern California, he is President of Lincoln First Federal Savings and Loan Association of Spokane. He served four years in World War II, is a member of the Eagles, Elks and Delta Sigma Phi. Married in 1930.



LUVERA, PAUL N. (Republican) Senator from the 40th District of San Juan and Skagit Counties. He was born in Italy in 1898. This is his second term as Senator having been elected again in November. He has a grade school education and is engaged in the retail grocery business. Sen. Luvera is a Shriner, Knight Templar, Elk and Rotarian. Senator Luvera was married in 1926.

McMULLEN, DALE (Republican) Senator from the 17th District of Clark County, was born in Evart, Michigan in 1893. He was Prosecuting Attorney of Clark County from 1926 to 1934. Elected to the Senate in 1948 and 1952. A graduate of the University of Oregon, he served in World War I and is a member of the Elks, I.O.O.F. and the American Legion. He is married.



NORDQUIST, DALE M. (Republican) Senator from the 20th District of Lewis County, born in Underwood, North Dakota in 1914. Senator Nordquist is a lawyer and holds a B. A. and LL. B Degree from the University of North Dakota. During World War II he was a Naval Aviator and is a Lieutenant Commander in the U. S. Naval Reserve. He is a member of Kiwanis, Elks, American Legion and Veterans of Foreign Wars. He was married in 1947.

Senators



NUNAMAKER, HOMER O. (Democrat) Senator from the 42nd District of Whatcom County, was born in Illinois, in 1891. He was first elected to the House in 1942 and has served three sessions and two special sessions; elected to the Senate in 1954. He is a grocer and a member of the Lions and the A.O.U.W. He is married.



PEARSON, FRANCIS (Democrat) Senator from the 24th District of Clallam, Jefferson and Mason Counties, was born in Seattle, Washington in 1909. He was first elected to the House in 1936, serving five terms. Elected to the Senate in 1948 and 1952. He is in the music business and is a member of the Elks, Eagles and the Grange. The Pearsons were married in 1946.



PETERSON, TED. G. (Republican) Senator from the 44th District of King County was born in Seattle in 1904. This is Senator Peterson's first term having been elected in November 1954. He has a high school education and one year of extension work from the University of Washington. He is owner of a Wholesale Equipment and Supply firm. Has served four years in the Washington State National Guard. Member of the Masons, Shrine, Elks and Lions. He is married.

RAUGUST, W. C. (Republican) Senator from the 8th District of Lincoln County, was born in Russia in 1895. He was first elected to serve in the House in 1942 and again in 1944 and 1946. He was appointed to fill Sen. Robertson's term in 1949 and elected in 1950 and again in 1954. Is associated in the grain, hardware and automobile business. He served as mayor and councilman of Odessa. Was in the Navy in World War I and is a member of the American Legion. Sen. Raugust was married in 1919.



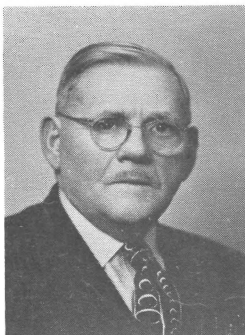
Senators

RILEY, EDWARD F. (Democrat) Senator from the 35th District of King County, was born in Seattle in 1898. He was first elected to the House in 1939 and has served for seven regular and two special sessions. He was elected to the Senate in 1950 and again in 1954. He is Vice President and Sales Manager of Palmer Supply Co., Trustee of the Puget Sound Mutual Savings Bank. He served in the army during World War I and is a member of the Knights of Columbus and Kiwanis.



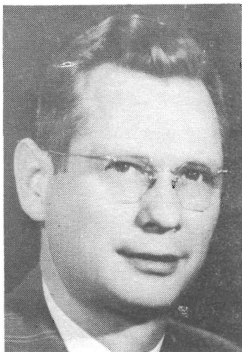
ROGERS, JACK HENRY (Democrat) Senator from the 23rd District of Kitsap County, was born in Utah in 1915. He was first elected in 1944. A former Coroner of Kitsap County serving from 1942 to 1946. He attended the Bremerton High School and has 2 years at the University of Washington. He is owner of a weekly newspaper, member of the Elks, Eagles and Washington Athletic Club. Married in 1937.

ROSELLINI, ALBERT D. (Democrat) Senator from the 33rd District of King County, was born in Tacoma, Washington in 1910. He was first elected in 1938. He has served as an Assistant State Attorney General and Deputy Prosecutor of King County. He is a graduate of the University of Washington in Liberal Arts and Law. He is a member of Tau Kappa Epsilon, Moose, Modern Woodmen of the World. Married in 1937.



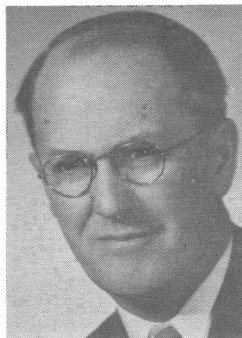
ROUP, HOWARD (Democrat) Senator from the 10th District of Asotin, Columbia and Garfield Counties, was born in 1885 in North Carolina. First elected to the Senate in 1936. He served for 10 years as County Commissioner of Asotin County. He is a high school and normal school graduate and is a farmer and stockman. He is a member of the Elks, Moose and Masonic Lodges. He was married in 1914.

Senators



RYDER, JOHN N. (Republican)
Senator from the 46th District of King County, was born in Seattle in 1907. Attended the University of Washington 2 years and is a graduate of the school of banking at Rutgers University and at present is in banking business. He is affiliated with the Masons, Elks and Rotary Club. He was married in 1936.

SEARS, CARLTON, IRVING (Republican)
Senator from the 22nd District of Thurston County, was born in Shopiere, Wisconsin. He is a graduate of the University of Washington in Pharmacy, and is a member of the Elks, Mason and Rotary Club. He is engaged in property management. Married in 1917.



SHANNON, WILLIAM DAY (Republican)
Senator from the 43rd District of King County, was born in Parkville, N. Y. in 1881. He was first elected to the House in 1946 and was appointed to the Senate in 1950 and elected that same year and re-elected in 1954. He is a graduate of the University of Michigan with a B. S. in Civil Engineering. He is a Consulting Civil Engineer and a member of the Masons. He is a past Governor of Rotary International, Past Pres. of Seattle Municipal League. Sen. Shannon was married in 1912.

SUTHERLAND, PATRICK D. (Democrat)
Senator from the 37th District of King County, was born in Los Angeles, California in 1922. He was elected to the House in 1948 and the Senate in 1950 and re-elected again in 1954. He is an attorney and is a member of Phi Delta Theta and the Eagles. He was married in 1948.



Senators

TODD, JOHN N. (Democrat) Senator from the 31st District of King County, was born at Genoa, Nebr. in 1885. He was first elected to the Senate in 1942 and served on the Legislative Joint-Fact-Finding Committee on Highways, Roads and Bridges in 1947, 1949 and 1951. He is a graduate of the U. of Illinois in Engineering. Belongs to the Masons. Sen. Todd is married.



WALL, HARRY (Republican) Senator from the 12th District of Chelan County. He was first elected to the Senate in 1940 he is now serving his 3rd term. Sen. Wall was born in Marinette, Wisconsin in 1893. He has a high school education and is now engaged as a lumberman. Served in World War II and is a member of the Eagles, Elks, and Masons. He is married.

WASHINGTON, NAT (Democrat) Senator from the 13th District of Grant County, was born in Coulee City, Washington in 1914. He is a graduate of the University of Washington and is an attorney. From 1942 to 1946 he served with the Army Air Corps and is a member of the Grange. Elected to the House in 1948 and to the Senate in 1950. and again in 1954. He was married in 1945



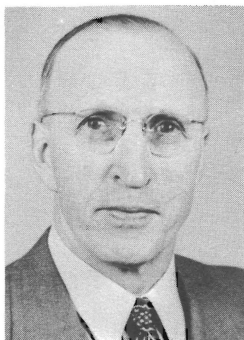
WILSON, THEODORE G. (Republican) Senator from the 19th District which comprises Pacific and part of Grays Harbor County. He was born in South Bend, Washington in 1908. A high school graduate and an oyster farmer; also in the logging industry. He belongs to the Elks, Eagles, Grange, and Kiwanis Club. This is his 2nd term in the Senate having been elected in 1952. The Wilsons were married in 1930.

Senators



WINBERG, ANDREW (Democrat) Senator from the 21st District of Grays Harbor County, was born in Nordfjoreid, Norway, in 1885. First elected to the House in 1942, he has served four regular sessions and 4 extra sessions. He was elected to the Senate in 1950. He was Democratic County Chairman from 1937 to 1948. He is a realtor, a member of the Odd Fellows, Loyal Order of Moose, Sons of Norway and Rotary Club. Senator was married in 1910.

ZEDNICK, VICTOR (Republican) Senator from the 36th District of King County, was born in Denver, Colorado in 1885. First elected to the House in 1911, he served four sessions and six in the Senate. A graduate of the University of Washington, he is an attorney and an Executive Secretary. He is a member of the Masons, Shrine, Elks, Eagles, Moose, Sigma Alpha Epsilon and Phi Delta Phi. He was married in 1911.



ZAHN, GEORGE (Republican) Senator from the 1st District of Douglas and Okanogan Counties. Appointed Senator Jan. 5, 1955 to succeed Robert French (Resigned). Senator Zahn was educated at Ridgefield, Washington and is a prominent orchardist in the Methow Valley. He has been active in public affairs, former Pres. Methow Valley Chamber of Commerce, former Pres. Washington State Sports Council and member of the Columbia Basin Commission. He is married.

**THE HOUSE
OF
REPRESENTATIVES**

STATE HOUSE OF REPRESENTATIVES

Members as of January 10, 1955
(ALPHABETICAL)

NAME	P. O. ADDRESS	Dis. No.	PARTY
Adams, Dr. Alfred O.....	W. 407 26th Ave., Spokane.....	6	Republican
Anderson, Eva.....	224 3rd St., Chelan.....	12	Republican
Arnason, Hal G., Jr.....	700 17th St., Bellingham.....	42	Republican
Bailey, Robert C.....	511 W. 1st St., South Bend.....	19	Democratic
Ball, Howard T.....	S. 2409 Jefferson St., Spokane.....	7	Republican
Beierlein, W. J.....	112 E. Main St., Auburn.....	30	Democratic
Bernethy, Robert "Bob".....	Route 2, Box 221, Monroe.....	39	Democratic
Bozarth, Horace W.....	Mansfield	1	Democratic
Brown, Gordon J.....	415 Princeton, Fircrest, Tacoma....	29	Democratic
Byrne, Thad.....	N. 4214 Washington St., Spokane....	5	Republican
Canfield, Damon R.....	Route 1, Granger.....	15	Republican
Carmichael, Wally.....	P. O. Box 736, Everett.....	38	Democratic
Carty, W. E.....	Route 1, Box 19, Ridgefield.....	17	Democratic
Chytill, Joe.....	1274 5th St., Chehalis.....	20	Republican
Clark, Cecil C.....	Route 2, Wapato.....	15	Republican
Clark, Newman H.....	5760 64th N.E., Seattle.....	43	Republican
Comfort, A. B.....	3615 N. 33rd St., Tacoma.....	26	Republican
Connor, Frank.....	2003 Jackson St., Seattle.....	33	Democratic
Cooney, John L.....	N. 4403 Adams, Spokane.....	5	Democratic
Donohue, Dewey C.....	506 E. Richmond, Dayton.....	10	Democratic
Dore, Fred H.....	914 E. Denny Way, Seattle.....	37	Democratic
Edwards, A. E.....	Deming	41	Democratic
Eldridge, Don.....	1212 Montgomery St., Mt. Vernon...	40	Republican
Elway, Harry S., Jr.....	3026 Sumner Ave., Hoquiam.....	21	Republican
Farrar, A. E. "Al".....	553 Broadway, Tacoma.....	27	Republican
Fisher, William A.....	Route 1, Lynden.....	41	Republican
Folsom, Morrill F.....	1805 Harrison St., Centralia.....	20	Republican
Frayn, R. Mort.....	2111 Parkside Dr., Seattle.....	43	Republican
Gallagher, Bernard J.....	E. 418 Liberty Ave., Spokane.....	3	Democratic
Gordon, J. Chester.....	LaCrosse	9	Republican
Griffith, Earl G.....	Star Route 2, Usk.....	2	Republican
Hallauer, Wilbur G.....	P.O. Box 1398, Oroville.....	1	Democratic
Hanna, H. B. "Jerry"....	1130 Springwater Ave., Wenatchee...	12	Democratic
Hansen, Julia Butler.....	Cathlamet	18	Democratic
Hanson, Herb	307 Avenue H., Snohomish.....	39	Democratic
Harris, Edward F.....	S. 1618 Cedar St., Spokane.....	7	Republican
Hawley, Dwight S.....	3310 W. 80th St., Seattle.....	44	Republican
Heckendorn, Henry.....	1224 6th Ave. W., Seattle.....	36	Republican
Henry, Al	White Salmon	16	Democratic
Hess, Andy	1414 S.W. 158th, Seattle.....	31	Democratic
Holliday, Mark V.....	Route 7, Box 436, Vancouver.....	17	Democratic
Huhta, Elmer.....	334 Karr Ave., Hoquiam.....	21	Democratic
Hurley, Mrs. Jos. E.....	E. 730 Boone Ave., Spokane.....	3	Democratic
Hyppa, Elmer A.....	Route 1, Box 111, Buckley.....	25	Democratic
Johnston, Elmer E.....	W. 714 14th Ave., Spokane.....	6	Republican
Jones, Arthur D., Jr.....	E. 1223 40th Ave., Spokane.....	4	Republican
Jones, Mrs. Vincent F.....	3021 E. 135th, Seattle.....	46	Republican
King, Chet.....	435 7th St., Raymond.....	19	Democratic
Kirk, Douglas G. "Doug".....	1236 Blgelow N., Seattle.....	36	Republican
Kupka, George W.....	801 S. "G" St., Tacoma.....	27	Democratic
Litchman, Mark, Jr.....	325 E. 133rd St., Seattle.....	45	Democratic
Loney, Milton R.....	341 Newell St., Walla Walla.....	11	Republican
Lorimer, Claude H.....	Route 6, Box 296, Olympia.....	22	Republican
Lybecker, Gus	Pomeroy	10	Republican
Mardesich, August P.....	1821 Grand Ave., Everett.....	38	Democratic
Martin, Tom	3209 Lorne Ave., Olympia.....	22	Democratic
Mast, Fred R.....	1017 Minor, Apt. 1004, Seattle.....	35	Republican
May, Catherine D.....	201 N. 24th Ave., Yakima.....	14	Republican
McBeath, Malcolm.....	2622 G St., Bellingham.....	42	Republican
McCutcheon, John G.....	3331 Olympic Blvd., Tacoma.....	29	Democratic
McDermott, Donald F.....	902 37th Ave. No., Seattle.....	37	Republican
McFadden, Dr. James L..	1217 E. 2nd St., Port Angeles.....	24	Democratic
Miller, Clyde J. "Jim"....	Route 3, Box 356, Kelso.....	18	Democratic
Miller, Floyd C.....	2303 N. 62nd St., Seattle.....	45	Democratic
Mundy, Roy.....	242 F St. N.W., Ephrata.....	13	Democratic

(Continued)

STATE HOUSE OF REPRESENTATIVES

Members as of January 10, 1955
(ALPHABETICAL)

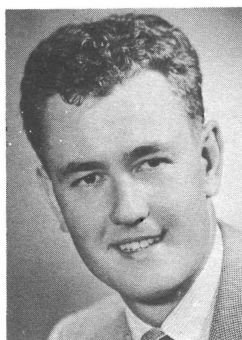
NAME	P. O. ADDRESS	Dis. No.	PARTY
Munro, Ed.....	Seahurst	31	Democratic
Munsey, Claude V.....	1810 E. 56th St., Tacoma.....	23	Democratic
Neal, Mel T.....	Des Moines	30	Democratic
Neill, Marshall A.....	414 Dexter, Pullman.....	9	Republican
Oakes, Hartney A.....	1702 N. 47th St., Seattle.....	32	Republican
O'Brien, John L.....	5041 Lake Washington Blvd. S., Seattle	33	Democratic
Olsen, Ray.....	2011 5th Ave., Seattle.....	35	Democratic
Olson, Ole H.....	904 Park St., Pasco.....	16	Democratic
Ovenell, James T.....	Route 1, Concrete.....	40	Republican
Pence, Delbert.....	Lind	8	Republican
Petrie, Harold J.....	205 S. 12th Ave., Yakima.....	14	Republican
Purvis, Ralph.....	Star Route 1, Box 221, Bremerton..	23	Democratic
Rasmussen, A. L. "Slim"	4031 Pacific Ave., Tacoma.....	28	Democratic
Rldgway, Emma Abbott..	513 Talcott St., Sedro Woolley.....	40	Democratic
Robison, Lester L.....	348 Catherine St., Walla Walla....	11	Republican
Rosenberg, K. O.....	Addy	2	Democratic
Ruoff, Richard.....	511 E. 47th, Seattle.....	32	Republican
Sandison, Gordon	122 E. 5th St., Port Angeles.....	24	Democratic
Savage, Charles R.....	1620 Division St., Shelton.....	24	Democratic
Sawyer, Leonard A.....	108 4th Ave. S.W., Puyallup.....	25	Democratic
Shropshire, Lincoln E....	2201 W. Yakima Ave., Yakima.....	14	Republican
Siler, Harry A.....	Randle	20	Republican
Smith, Vernon A.....	P. O. Box 7, Medina.....	46	Republican
Stocker, Paul M.....	Route 5, Box 717, Everett.....	38	Democratic
Strom, John F.....	1508 W. Dravus St., Seattle.....	44	Republican
Swayze, Mrs. Thomas A..	2910 N. 28th St., Tacoma.....	26	Republican
Testu, Jeanette.....	2138 41st S.W., Seattle.....	34	Democratic
Timm, Robert D.....	Harrington	8	Republican
Wang, Arnold S.....	2001 Nipsic, Bremerton.....	23	Republican
Wedekind, Max.....	3729 40th Ave. S.W., Seattle.....	34	Democratic
Weitzman, William A....	Liberty Lake	4	Republican
Wintler, Miss Ella.....	800 E. 24th St., Vancouver.....	17	Republican
Yearout, John K.....	600 W. 3rd St., Aberdeen.....	21	Republican
Young, R. C. Brigham...	604 Madison St., South Cle Elum...	13	Democratic

Representatives



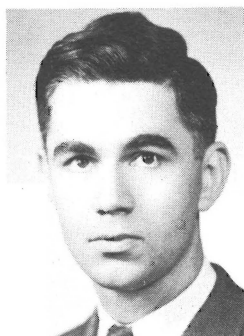
ADAMS, ALFRED O. DR. (Republican) Representative from the 6th District of Spokane County is serving his second time in the House. He was born January 10, 1897 at Paola, Kansas. He is an Orthopaedic surgeon having received his M. D. Degree in 1924 from the Washington University, St. Louis, Missouri. He served two years in World War I. Rep. Adams is affiliated with the Masonic Lodge. Married in 1923.

ANDERSON, EVA (Republican) Representative from the 12th District of Chelan County, holds B. A; M. A; and Ph. D. Degrees and writes both books and news columns. On Lake Chelan she sometimes operates a tourist home. She is a former County Superintendent of schools, State Supervisor of Adult Education, and Regent of the University of Washington. Her affiliations are Soroptimist, American Association of Pen Women, American Association University Women, Delta Kappa Gamma, Pi Delta Nu.



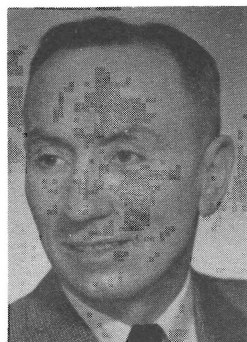
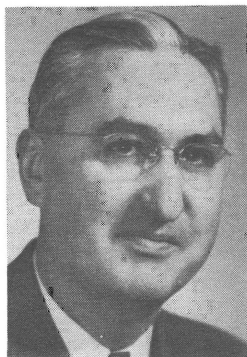
ARNASON, HAL G. JR. (Republican) Representative from the 42nd District of Whatcom County was born in Bellingham in 1927. He is a graduate of the University of Washington with a B. A. and LL. B. Degree. He is serving his second term in the House. Rep. Arnason is in the real estate and insurance business. During World War II, he served 18 months in the Army. He is a member of Sigma Alpha Epsilon, Rotary Club, Bellingham Elks. He was married on February 15, 1949.

BAILEY, BOB (Democrat) Representative from the 19th District of Pacific and part of Grays Harbor County. He was born in Raymond in 1918. This is his third term in the House. He was Pacific County Clerk from 1947 to 1951. He is a journeyman printer. Served in the Navy for 5 years. Belongs to the American Legion, 40 et 8, VFW, Masons, Elks, Eagles. International Typo Union, South Bend Athletic Club, Willapa Harbor Poggies, South Bend and Raymond Chamber of Commerce. He is married.



Representatives

BALL, HOWARD T. (Republican) Representative from the 7th District of Spokane County; his 5th term, having been elected first in 1946. He was born in Globe, Arizona, in 1900. He attended college for one year and owns and directs a funeral parlor, Pres. of Sunset Memorial Chapel. He is a member of the Elks, Masons, Kiwanis, Exchange, Toastmasters and the Chamber of Commerce. He is married.



BEIERLEIN, W. J. (Democrat) Representative from the 30th District of King County, was born in North Dakota in 1891. He is married. He has a men's clothing store business in Auburn. He has served eight regular sessions and five special sessions. He is a former member of the Auburn City Council and is now a member of the Auburn Kiwanis Club and President of the Auburn Federal Savings & Loan Association.

BERNETHY, ROBERT (Democrat) Representative from the 39th District which includes part of Island and part of Snohomish Counties, was born in Randall, Minnesota in 1896. First elected to the House in 1938, he served 9 regular and 5 special sessions. A member of his school board. He saw service in World War I being with the 8th Infantry of the 8th Division, he is a member of the Eagles, Veterans of Foreign Wars and Elks. He was married in July 1920.



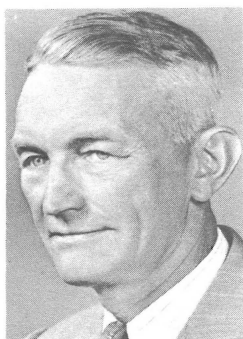
BOZARTH, HORACE W. (Democrat) Representative from the 1st Legislative District comprising Douglas and Okanogan Counties. First elected in 1954 this is his first term in the House. He has been a Douglas County Commissioner for 6 years. He was born in Fairfield, Washington. He is a graduate of Gonzaga University class of 1917 with a B.A. Degree. He is a farmer and member of the Washington State Grange. He is married.

Representatives



BROWN, GORDON JOSEPH (Democrat) Representative from the 29th District of Pierce County, was born in Mankato, Minnesota, in 1904. Following high school he attended business college and is now a construction worker. He was married May 10, 1933.

BYRNE, THAD (Republican) Representative from the 5th District of Spokane County. He was born in Shelton, Washington in 1901. Receiving his education at Broadway high school, Seattle (1918), State College of Washington A. B. Degree in 1925 and also did post graduate work at Columbia and Stanford Universities. He runs the travel agency known as Byrne Circle Tours. He is a Mason, Moose and belongs to the following fraternities--Beta Theta Pi, Sigma Delta Chi and Delta Sigma Rho. Married in 1925.



CANFIELD, DAMON R. (Republican) Representative from the 15th District of Yakima County. Born in 1897 at Siloam Springs, Arkansas. He graduated from Lincoln High School, Seattle. Then attended the University of Washington and graduated from Washington State College in 1921. He has done post graduate work in both the State College and U of W. He is a farmer and served in World War I as an Ensign in the U. S. Navy. He belongs to the American Legion. Representative Canfield was married in 1921.

CARMICHAEL, WALLACE I. (Democrat) Representative from the 38th District of Snohomish and Island Counties, was born in 1922. He is a high school and business college graduate and attended Everett Junior College. Served five years in the U. S. Army Air Force and is a member of the American Legion, Elks, Veterans of Foreign Wars and the Eagles Lodge.



Representatives

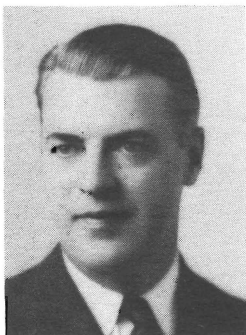
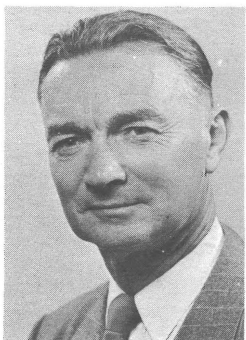
CARTY, W. E. (Democrat) Representative from Clark County, was born in Ridgefield in 1894. He was first elected to the House in 1932 and served eight regular and four special sessions. Representative Carty is a farmer. He is married.



CHYTIL, JOE (Republican) Representative from the 20th District of Lewis County was born in Aberdeen, Washington in 1909. He has a high school and business college education and at the present time is owner and manager of a radio broadcasting station. He was elected to two terms as the Lewis County Coroner. He belongs to the Elks of Chehalis and Rotary Club. He was married in 1935.



CLARK, CECIL C. (Republican) Representative from the 15th District of Yakima County was born in Yakima in 1896. He attended the public schools of Yakima and went to the University of Washington one year. He is in the business of growing fruit and general farming. Belongs to the Masonic lodge, Shrine (Affili Temple), Yakima Rotary Club. He was married in 1927.



CLARK, Newman H. (Republican) Representative from the 43rd District of King County, was born in Paterson, New Jersey in 1899. Appointed to the House in July 1950 and was elected in 1950 and again in 1952 and 1954. This is his fourth term. He is a University of Washington graduate with an LL. B. Degree and is now a practicing attorney. He served with the Army in 1918 and was in the U. S. Navy from 1943 to 1945. He is a Mason. Married in 1942.

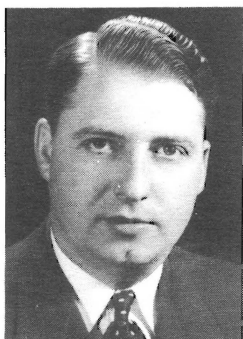
Representatives



COMFORT, A. B. (Republican) Representative from the 26th District of Pierce County, was born in South Dakota, in 1884. He was first elected to the House in 1942 and served five regular terms and four special sessions. He holds an A.B. and LL.B. Degree. He is a member of the Masons and Elks. He was Prosecuting Attorney, Administrator, W.E.R.A., 1933 to 1935. He was married in 1914.



CONNOR, FRANK (Democrat) Representative from the 33rd District of King County, was born in Seattle in 1916. He is serving his third term in the House. He attended the Seattle schools and graduated from O'Dea High School. He is now selling furniture and electrical appliances. He is a member of the Knights of Columbus.



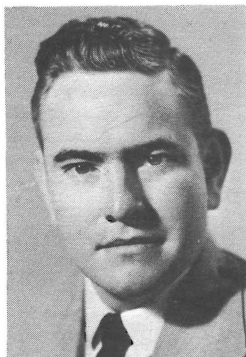
COONEY, JOHN L. (Democrat) Representative from the 5th District of Spokane County. He was born in Condon, Oregon in 1915. He was first elected to the House in 1950 and was re-elected in 1954. Attended Gonzaga University, School of Law and has a LL.B. Degree. He is a lawyer. Belongs to the Elks, Kiwanis, Washington State Grange and Knights of Columbus. The Cooneys were married in 1939.

DONOHUE, DEWEY C. (Democrat) Representative from the 10th District comprising Asotin, Columbia and Garfield Counties, was born in Columbia County in 1897. He has been one of the Columbia County Commissioners and is a School Board Director. He attended high school and business college and is now a farmer and stockman. He is a member of the Elks, Masons and Grange. Married in 1921.



Representatives

DORE, FRED H. (Democrat) Representative from the 37th District of King County was born in Seattle on July 31, 1925. He attended Seattle University almost three years then he majored in Economics graduating from Georgetown Foreign Service School, Washington. (B.S.F.S.) in 1946; graduate of Georgetown Law School, Washington, D. C. with an LL.B. Degree in 1949. He is practicing law in Seattle



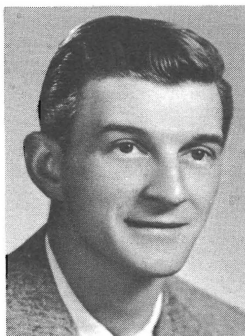
EDWARDS, A. E. (Democrat) Representative from the 41st District of Whatcom County, was born in Canada, in 1879. He was first elected in 1932 and has served eight sessions of the Senate and three in the House. He has been Roads Supervisor for Whatcom County for many years and is a farmer. He is a member of the Masons, Grange, Lions, Eagles, Elks, Odd Fellows and Knights of Pythias.



ELDRIDGE, DON (Republican) Representative from the 40th District of San Juan and Skagit Counties, was born in Mount Vernon, Washington in 1919. He attended the State College and Western College of Education where he graduated in 1944. He has a retail stationery store. Served in the Army Air Force during World War II and is affiliated with the Rotary, Jr. Chamber of Commerce. Past Vice-President of United States Jr. Chamber of Commerce. He is married.



ELWAY, HARRY S. JR. (Republican) Representative from the 21st District of Grays Harbor County was born in Hoquiam in 1920. He has a high school education and is in the plumbing and heating business. Served in the Army in the South Pacific during World War II. He is a member of the American Legion, V.F.W., D.A.V., and Eagles. Married in 1947.



Representatives



FARRAR, A. E. (Republican) Representative from the 27th District of Pierce County. Born in 1902 in Great Falls, Montana and attended grade school, night schools, F.B.I. law enforcement courses. He is a retired law enforcement officer and belongs to the Elks, Scandinavian American Fraternity of Tacoma. He was married in 1935.

FISHER, WILLIAM A. (Republican) Representative from the 41st District of Whatcom County was born in Champaign, Illinois in 1887. This is his first term in the House of Representatives. He attended the University of Illinois - Law School and is Superintendent of Schools. He is affiliated with Free Masonry, Lions Club and the Grange. He was married in 1921.



FOLSOM, MORRILL F. (Republican) Representative from the 20th District of Lewis County was born in Kent, Washington in 1905. This is his first term being elected in November 1954. Graduate of the University of Washington was formerly secondary teacher and administrator. He is owner and operator of a greenhouse. Belongs to Masonic Bodies and the I.O.O.F. Married in 1937.

FRAYN, R. MORT (Republican) Representative from the 43rd District of King County, was born in Foulton, South Dakota in 1906. Received his B.A. Degree from the University of Washington in 1927 and is affiliated with Phi Delta Theta. Was first elected to serve in the House in 1946. He was Speaker of the House for the 1953 Session. He is married.



Representatives

GALLAGHER, BERNARD J. (Democrat) Representative from the 3rd District of Spokane County, was born in Prosser, Washington, in 1912. He is a graduate of Gonzaga Law School and is an attorney. He is President of the Gonzaga University Alumni Association. Served in the U.S. Army from 1943 to 1946. He is a member of the Knights of Columbus and the Elks. The Gallaghers were married on August 22, 1947.



GORDON, J. CHESTER (Republican) Representative from the 9th District of Whitman County, was born in Lacrosse, Washington in 1909. Graduated from the University of Wyoming in 1933 and also the Washington State College. He held offices of National Director and National Agriculture Chairman of The Junior Chamber of Commerce and was President of Washington State Young Republicans from 1946 to 1949. Serving his fourth term in the State Legislature. Member of the Grange and Farm Bureau. He is married.



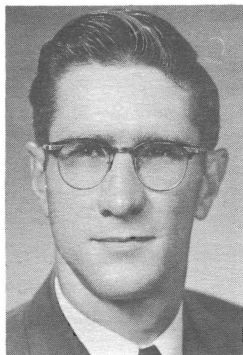
Griffith, Earl G. (Republican) Representative from the 2nd District of Pend Oreille and Stevens Counties. He was born in Lynn County, Kansas in 1881. He has served four regular sessions and four special sessions. Has a high school education and attended college one year. He is a retired State Patrolman. He served in the Spanish-American War in the Philippines. A member of the Masons, United Spanish War Veterans, Brotherhood of Locomotive Firemen & Engineers and the Grange. Married in 1910..



HALLAUER, WILBUR G. (Democrat) Representative from the 1st District of Okanogan and Douglas Counties. was born in Webster, N. Y. in 1914. He is the manager of a fruit processing plant at Oroville. A University of Washington graduate and is serving his fourth term in the House. He was married in 1942.



Representatives



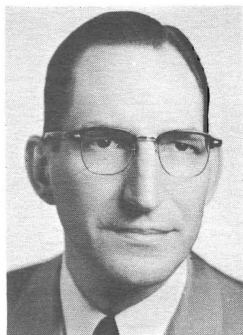
HANNA, H. B. "JERRY" (Democrat) Representative from the 12th District of Chelan County was born in Wenatchee on February 14, 1921. First elected on November 2, 1954. A graduate of Valparaiso University Law School he is an Attorney. He is affiliated with Sigma Delta Kappa, Elks, Kiwanis, Toastmasters, Wenatchee Junior Chamber of Commerce. Married in 1949.

HANSEN, JULIA BUTLER (Democrat) Representative from the 18th District of Wahkiakum County, was born at Portland, Oregon in 1907. She was first elected to the House in 1938 and has served nine terms. Chairman of Western Interstate Committee on Highway Policy in 1951. Rep. Hansen received her A.B. Degree in 1930 from the University of Washington. Served on the City Council of Cathlamet for eight years. A housewife and writer, she was married in 1939.



HANSON, HERB (Democrat) Representative from the 39th District of Snohomish and Island Counties was born in Minnesota in 1910. He attended the public schools. This is his second term in the House having been elected in 1952 and 1954. He is a Real Estate Appraiser and belongs to the Grange and Sons of Norway. Rep. Hanson was married in 1931.

HARRIS, EDWARD F. (Republican) Representative from the 7th District of Spokane County, was born in Harrison, Idaho in 1909. A graduate of the School of Business Administration, University of Idaho and School of Law Gonzaga University. Is now a practicing attorney but was previously Assistant Manager of Spokane Taxpayers Association. He was married on December 7, 1954.

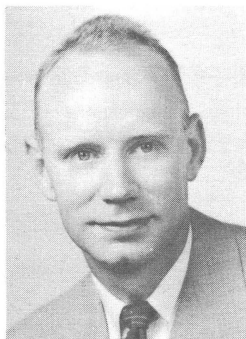


Representatives

HAWLEY, DWIGHT S. (Republican) Representative from the 44th District of King County. Born in Ballard in 1896. Attended the University of Washington. He is an owner and operator of an Insurance Agency. Served in the Army during World War I. He is a member of American Legion, VFW, Elks, Eagles, Ballard Commercial Club, Kiwanis, Seattle Chamber of Commerce, YMCA, 2nd Division Association and Sunset Hill Community Club. He was married in 1923.



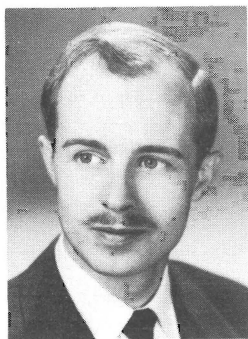
HECKENDORN, HENRY (Republican) Representative from the 36th District of King County, was born in Winthrop, Washington in 1922. This is his first term in the House. A graduate of the University of Washington with a B.S. and LL.B. Degree. Member of Washington State and Federal Bars. Served during World War II and is in the U.S. Naval Reserve Air Corps. Affiliated with Phi Delta Phi and American Legion. He was married in 1945.



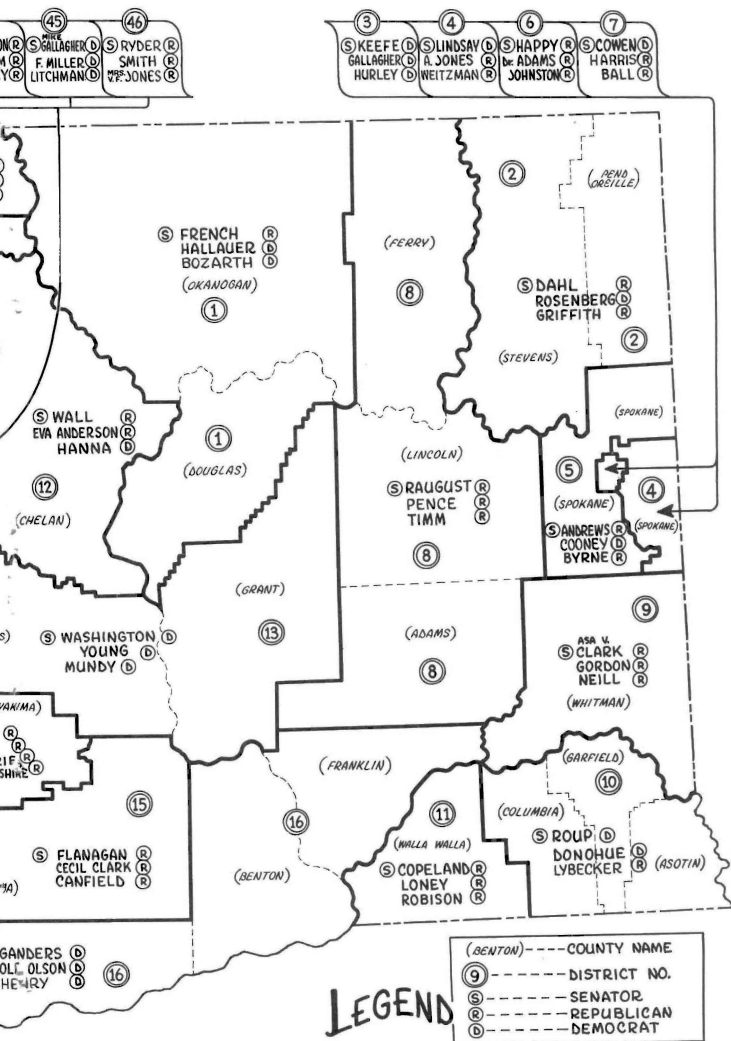
HENRY, AL (Democrat) Representative from the 16th District comprising Benton, Franklin, Klickitat and Skamania Counties was born in Ness County, Kansas in 1911. First elected to the House in 1940 and has served three terms. He has held numerous positions in the Democratic party. He has a business school training and is a telephone executive. He served in World War II and was a major in the Washington National Guard. Member of the Elks, Lions and the Eagles. He married in 1947.



HESS, ANDY (Democrat) Representative from the 31st District of King County, was born in Kansas in 1923. First elected in 1950 he is serving his third term. Graduated from the University of Washington with a B.A. Degree and has taken graduate work in Taxation and Fiscal Policy. At present he is a sales representative. Served in the Navy during World War II and is a member of the Grange, A.F. of L., Junior Chamber of Commerce and Phi Delta Theta. Married in 1946.



ON ~ 1955 LEGISLATIVE ROSTER

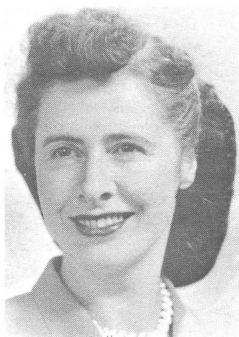
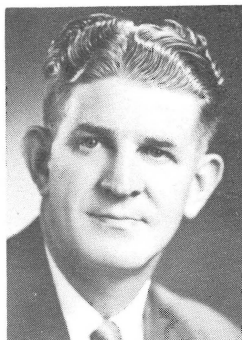


Representatives



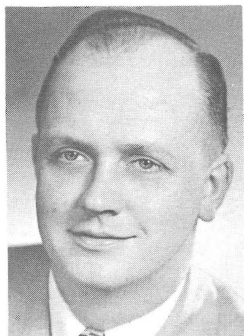
HOLLIDAY, MARK V. (Democrat) Representative from the 17th District of Clark County, was born in Park City, Colorado, in 1905. He graduated from high school and received some college training and is associated with a life insurance company. Member of the Pulp and Sulphite Union and Masonic Lodge. He is married.

HUHTA, ELMER (Democrat) Representative from the 21st District of Grays Harbor County, was born in Hoquiam in 1905. This is his third term. He has had six years at the University of Washington and served as Assistant Football Coach for Washington State College. He served four years in military service. Belongs to the Masons, Elks and Eagles.



HURLEY, MRS. JOSEPH E. (Democrat) Representative from the 3rd District of Spokane County, was born in Winnebago, Minnesota. She is serving her 2nd term in the House. Received her education at Holy Names Normal. She did post graduate work at Eastern Washington College of Education. She is a housewife and a member of the Ladies Auxiliary, Spokane County Bar Association. She is married.

HYPPA, ELMER A. (Democrat) Representative from the 25th District of Pierce County. Rep. Hyppa was born in Wilkeson in 1919. Received his education in the public schools of Buckley. He is a farmer and has held offices in the Grange and Farmers Union. Belongs to the Eagles, Mason, Elks, VFW., Jr. Vice Commander of Carbon Glacier Post, Chairman Board of Trustees of the Community Memorial Hospital of Enumclaw. Was married in 1946.



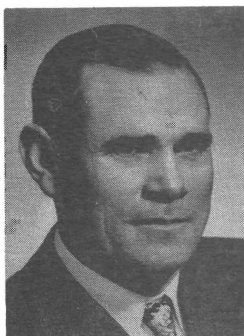
Representatives

JOHNSTON, ELMER E. (Republican) Representative from the 6th District of Spokane County, was born in Oaxdale, Washington in 1898. Was first elected to the House in 1946. He is a college graduate having received his LL.B. and LL.M. Degree and is an attorney. He served in the First World War and is a member of the Elks and Knights of Columbus. He was married in 1929.



JONES, ARTHUR D. JR. (Republican) Representative from the 4th District of Spokane County, was born in Spokane in 1901. This is his first term. Graduate of Culver Military Academy; and attended Washington State College for two years. He is a Real Estate Broker. Is affiliated with Brotherhood of Friends Lodge and B.P.O. Elks Lodge. Representative Jones was married in 1950.

JONES, MRS. VINCENT F. (Republican) Representative from the 46th District of King County, was born in St. Helena, California, in 1900. She is a graduate of Washington Central College of Education. Affiliated with Women's Federated Club, P.T.A., Congregational Women's Church Group, Music and Art Group. She is married.



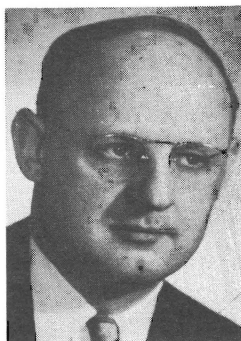
KING, CHET (Democrat) Representative from the 19th District of Pacific and part of Grays Harbor County, was born in Doty, Washington in 1901. He has a high school education and is now working as a woodsman. First elected to the House in 1944, he has served five regular and four special sessions. Served in the Navy for three years. He is affiliated with the Eagles, Elks and International Woodworkers of America. Married in 1922.

Representatives



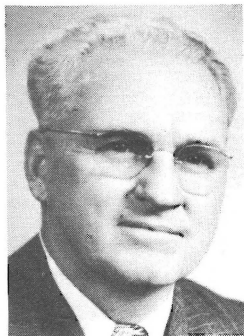
KIRK, DOUGLAS G. "Doug" (Republican) Representative from the 36th District of King County, born in 1901 in Everett. This is his third term in the House. Has a Degree in Business Administration from the University of Washington and 2 years of Post Graduate work in Education and Economics. He is in Educational work. Served 5 years as an officer in the Navy, is a member of the Naval Reserve and member of the National Guard. He is married.

KUPKA, GEORGE W. (Democrat) Representative from the 27th District of Pierce County, was born in South Prairie, Washington in 1912. Now serving his third term in the House. He received a high school education and is a jeweler. Served in the Navy during World War II and is a member of the Eagles and Amvets.



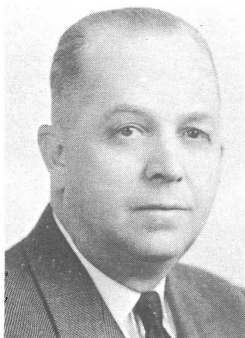
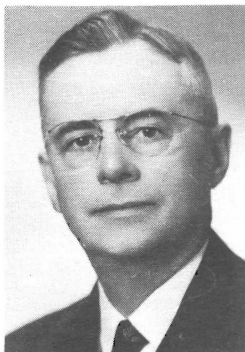
LITCHMAN, MARK, JR. (Democrat) Representative from the 45th District of King County, was born in Seattle in 1925. This is his first term in the House. He has a B.A. and LL.B. Degree from the University of Washington and is a practising attorney. Served 3 years active duty in the U.S. Navy and is in the U.S.N.R., 13th Dist. Legal Reserve Law Company. Belongs to Phi Alpha Delta Law Fraternity. Was married in 1945.

LONEY, MILTON R. (Republican) Representative from the 11th District of Walla Walla County. He was born in Walla Walla in 1888. He will be serving his 7th term having been first elected in 1941. Attended the schools of Walla Walla and is a graduate of Humboldt College Institute of Toronto, Canada. He is a farmer. Member of the Masons, Shrine and Independent Order of Odd Fellows. Representative Loney is married.



Representatives

LORIMER, CLAUDE HAMILTON (Republican) Representative from the 22nd District of Thurston County, was born in Kansas in 1884. After high school graduation he attended Moody Bible Institute and Phillips Bible Institute. His ministry was in Deer Lodge, Mont., Sumner, Washington and 20 years at the First Christian Church of Olympia, retired in 1950, after serving 36 years as a minister he has the title of Pastor Emeritus of the First Christian Church. Member of the Masons, and Kiwanis Club. He is married.



LYBECKER, GUS (Republican) Representative from the 10th District comprising Asotin, Columbia and Garfield Counties, was born in Washington in 1887. This is his first term in the House. Holds a Bachelor and Masters Degree from the University of Washington and has 2 years law school. He has been a school administrator but is now in television business. Member of the Masons, Odd Fellows, and Knights of Pythias. Married in 1915.

MARDESICH, AUGUST P. (Democrat) Representative from the 38th District, Island and Snohomish Counties, was born in San Pedro, Calif. in 1920. He was appointed to serve in the Special Session of 1950 and was elected in 1950, 1952 and 1954. A graduate of the University of Washington with a B.A. and LL.B. Degree. He is an attorney and operator of a commercial fishing vessel. Served 4 years as a Capt. in the U.S. Army. Member of Phi Delta Phi and Elks Club. He is married.



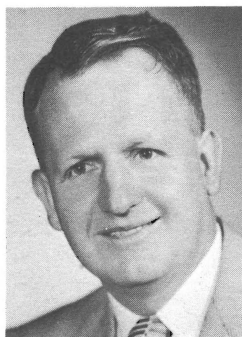
MARTIN, TOM (Democrat) Representative from the 22nd District of Thurston County, was born in Hoquiam in 1899. Educated in the schools of Grays Harbor and Lewis Counties. Attended the University of Washington. A charter member of the American Legion, Rep. Martin is a veteran of the First World War. Has been County Auditor of Lewis County, Deputy State Auditor, Director of State Parks and State Treasurer. Member of the Masons, Scottish Rite, Shrine, Grange, Kiwanis and Boy Scouts. He is married.

Representatives



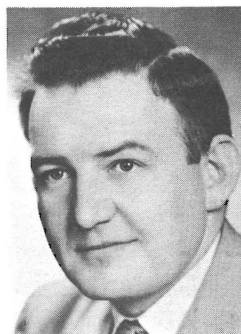
MAST, FRED R. (Republican) Representative from the 35th District of King County, was born in Superior, Wisconsin in 1896. He went to the University of Washington for a year and a half and the University of Montana for one year. He is a merchant. Served in both World War I and World War II. He belongs to the Masons, Shrine, Elks, American Legion and Disabled American Veterans. Rep. Mast was married in 1918.

MAY, CATHERINE D. (MRS. JAMES O.) (Republican) Representative from the 14th District of Yakima County. This is her second term in the House. She is a graduate of the University of Washington and has a 5 year teaching degree at the present time she is a radio commentator. Belongs to Alpha Chi Omega Sorority. Married in 1943.



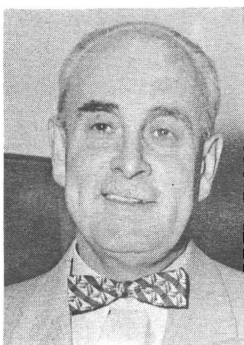
McBEATH, MALCOLM "DUTCH" (Republican) Representative from the 42nd District of Whatcom County, was born in Bellingham in 1913. This is his second term in the House, he has been a city councilman of Bellingham. Attended Western Washington College of Education and the University of Washington. Owner of a glass company. Belongs to the Rotary Club and Bellingham Chamber of Commerce. Representative McBeath was married in 1937.

MCCUTCHEON, JOHN G. (Democrat) Representative from the 29th District of Pierce County was appointed to fill vacancy in the House and re-elected in 1954. He was born in South Bend, Ind. in 1923 and attended the Universities of Washington and California also Washington College of Law, Washington, D. C. and has an LL.B. Degree from Montana University. He is an attorney and belongs to the Eagles and American Legion. He is married.



Representatives

MCDERMOTT, DONALD F. (Republican) Representative from the 37th District of King County was born in Seattle in 1902. This is his first term in the House. Attended Wharton School of Finance and Commerce, University of Pennsylvania graduating with a B.S. in Economics. He is in the real estate business. Served as a Lieutenant Commander in the U. S. Navy during World War II. Belongs to Phi Delta Theta. He is married.



McFADDEN, JAMES L. DR. (Democrat) Representative from the 24th District of Clallam County, born in Victoria, B. C. in 1899. First term in the House but was appointed to serve on Interim Committee. He was a city councilman for the city of Port Angeles for 2 terms. Graduate of Medicine & Surgery at the University of Toronto Medical School. He belongs to Masons, Elks and Kiwanis. The McFaddens were married in 1926.

MILLER, CLYDE JAMES (Democrat) Representative from the 18th District comprising Cowlitz and Wahkiakum Counties, was born in Malcom, Iowa in 1887. He is a high school graduate. Member of the Elks, Masons and I.L.W.U. and is a Democratic Precinct Committeeman. Representative Miller is married.



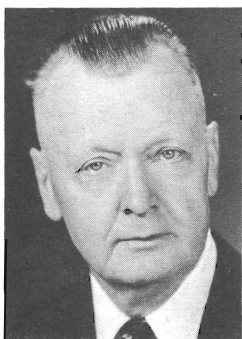
MILLER, FLOYD C. (Democrat) Representative from the 45th District of King County, was born in Seattle in 1902. He was first elected to the House in 1937 and has served six terms. A high school graduate, member of the Elks Lodge and engaged in real estate and insurance. He is married.

Representatives



MUNDY, ROY (Democrat) Representative from the 13th District of Grant and Kittitas Counties, was born in Abbeville, South Carolina in 1912. This is his second term in the House. Served as Grant County Clerk for seven years and as City Treasurer of the city of Grand Coulee. He has attended several quarters at the University of Washington. Was in the service during World War II. He is affiliated with the Ephrata Lions and Elks Club.

MUNRO, ED (Democrat) Representative from the 31st District of King County, was born in Seattle in 1905. First elected to the House in 1954. Has been King County Democratic Chairman and State Committeeman for King County during 1951-1954. Graduate of University of Washington and has done graduate work at Harvard and Michigan Universities. He is in insurance and real estate business and is a Mason. Married in 1936.



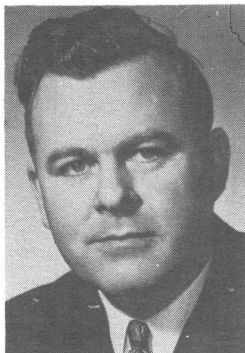
MUNSEY, CLAUDE V. (Democrat) Representative from the 28th District of Pierce County, was born in Missouri in 1889. This is his second term in the House of Representatives. He is a high school graduate and has had five years of college. He is a building contractor. During the First World War he served 21 months. Member of F. & A M and Royal Arch. Married in 1921.

NEAL, MELWARD T. (Democrat) Representative from the 30th District of King County, was born in Canada in 1886. First elected in 1934 served in the House in 1935, 37, 39 and in the Senate in 1941, 43 and Extraordinary Session of 1944. He has a high school education and is retired. Is in the Coast Guard Reserve and is affiliated with B.P.O.E., I.O.O.F, Eagles and Lions. He is married.

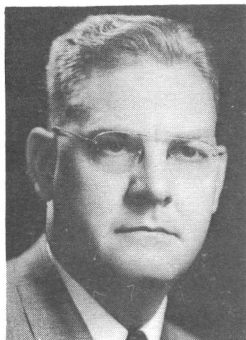


Representatives

NEILL, MARSHALL A. (Republican) Representative from the 9th District of Whitman County, was born in Pullman in 1914. Appointed to fill the vacancy left by Asa Clark who was appointed to the Senate in 1949. He was elected in 1950, 1952 and 1954. He is a City Attorney for Pullman, having received his B.A. at Washington State and his LL.B. Degree at the University of Idaho. He served in the Navy during World War II and is a member of the Masons, Elks and Knights of Pythias. He is married.



OAKES, HARTNEY A. (Republican) Representative from the 32nd District of King County. He is a native Washingtonian having been born in Quincy in 1908. A high school graduate he also attended the University of Washington. He is engaged in the business of property management. During World War II he served in the U.S. Navy from 1943 to 1946. He is a member of the American Legion, Rotary Club and Wallingford Commercial Club. Rep. Oakes is married.



O'BRIEN, JOHN L. (Democrat) Representative from the 33rd District of King County, was born in Seattle, in 1911. He was first elected to the House in 1941 and has served seven regular and five special sessions. He was Majority Leader in 1951. Graduate of the Western Institute of Professional Accounting, is a Certified Public Accountant. He served in the Coast Guard and is a member of the Knights of Columbus, Washington Athletic Club and Rainier Businessmen's Club. He is married.



OLSEN, RAY (Democrat) Representative from the 35th District of King County, was born in Baker, Oregon in 1904. Elected in 1950 he is serving his third term in the House. He has a business college education and is a Public Relations man also editor of a trade magazine. Has been Asst. Director of the State Dept. of Transportation for 4 years and Asst. District Supervisor of the Census in 1940 and 1950. He is a member of the Elks, Eagles, Lions and Swedish Club. Rep. Olsen is married.

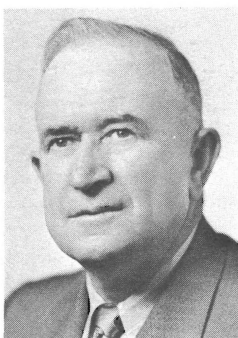
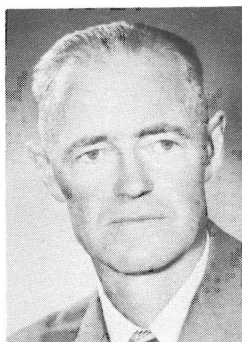


Representatives



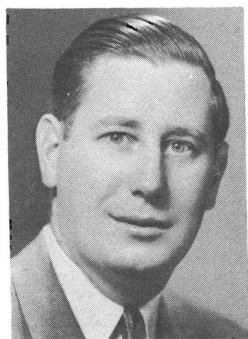
OLSON, OLE H. (Democrat) Representative from the 16th District of Franklin, Benton, Klickitat and Skamania Counties, was born in Minnesota in 1890. First served in the House in 1929 and is serving his sixth term. He was Chief Clerk of the House in 1933 Session and served as State Printer from 1933 until 1941. He graduated from St. Olaf College in 1912 and is now a retired newspaper publisher. Belongs to the Elks, Masons and Knights of Pythias. Was married in 1915.

OVENELL, JAMES T. (Republican) Representative from the 40th District of San Juan and Skagit Counties, was born in Avon, Washington in 1893. Elected to House in 1950 he is serving his third term. Was a County Commissioner of Skagit County for six years. A high school graduate and is a farmer. He served in World War I and is a member of the Farm Bureau and Grange. Married in 1920.



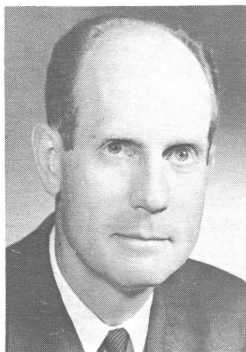
PENCE, DELBERT (Republican) Representative from the 8th District consisting of Adams, Ferry and Lincoln Counties. He was born in Mt. Grove, Missouri in 1897. This is his first term in the House of Representatives. Served as Adams County Commissioner from 1943 to 1949. After high school he attended Northwestern Business College. He is a wheat farmer. Belongs to Masonic Bodies. He is married.

PETRIE, HAROLD J. (Republican) Representative from the 14th District of Yakima County, was born in South River, New Jersey in 1917. He holds a B.S. Degree from Rutgers University and an LL.B. Degree from Georgetown University and at the present time is a practicing attorney. Served as a Major in the Second World War. He is a member of B.P.O.E., Knights of Columbus, D.A.V., V.F.W., and the American Legion. He is married.



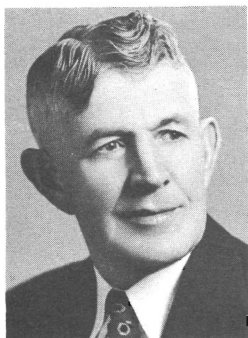
Representatives

PURVIS, RALPH (Democrat) Representative from the 23rd District of Kitsap County, was born in Bremerton in 1909. This is his second term in the House. He has been Prosecuting Attorney of Kitsap County and is an attorney having received his LL.B. Degree from the University of Washington. Served in the U. S. Navy during World War II and is a member of the Masons and Elks. Married in 1940.



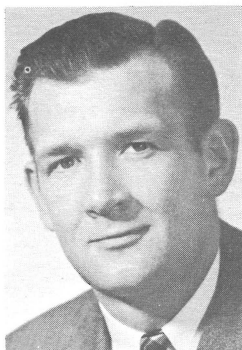
RASMUSSEN, A. L. "SLIM" (Democrat) Representative from the 28th District of Pierce County, was born in Everett in 1909. He was first elected to the House in 1944 and is serving his sixth successive term. He received his education from the Tacoma Public Schools. Has been a Tacoma School Director. Is interested in real estate, insurance and farming. He was married in 1940.

RIDGWAY, EMMA ABBOTT (Democrat) Representative from the 40th District of Skagit and San Juan Counties, was born in Seattle. First elected to the House in 1944. She received her B. A. Degree from the State College and her M. A. Degree at Columbia University. Belongs to American Legion Auxiliary, P. E. O. Sisterhood, Soroptimist, Alpha Chi Omega, Pi Lambda Theta and Phi Kappa Phi. She owns a Theatre in Sedro Woolley and is married.



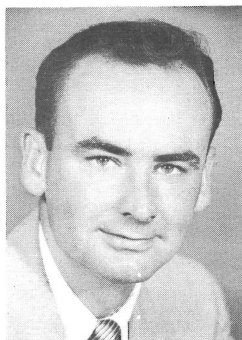
ROBISON, LESTER L. (Republican) from the 11th District of Walla Walla County, was born in Dayton in 1884. He has a public school education. Is a farmer and stockman. This is his second term in the House. He belongs to the Masons and Elks. Married in 1907.

Representatives



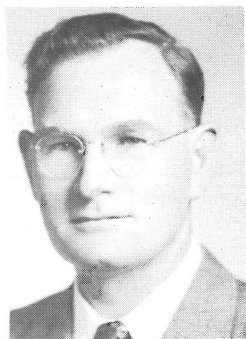
ROSENBERG, K. O. (Democrat) Representative from the 2nd District of Stevens and Pend Oreille Counties, was born in Spokane in 1920. First elected in 1948 and again in 1952 and 1954. He has a high school education and is a dairy farmer. During World War II he spent four years in the U. S. Navy. His affiliations are the Grange and American Legion. He was married in 1948.

RUOFF, RICHARD (Republican) Representative from the 32nd District of King County was born in Seattle in 1921. This is his second term in the House. He attended the University of Washington for two years and is engaged in the insurance business. Served in the U. S. Marines from 1942 to 1945. He is married.



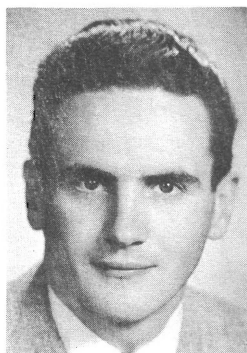
SANDISON, GORDON (Democrat) Representative from the 24th District of Clallam, Jefferson and Mason Counties, was born in Auburn, Washington, in 1920. He is a college graduate with two years of post graduate work. Is an insurance and real estate broker. Appointed to the House in 1947 and elected in 1950, 1952 and 1954. Served in the U. S. M. C. during World War II and is a member of the V. F. W., American Legion, Elks and Eagles. He was married in 1943.

SAVAGE, CHARLES R. (Democrat) Representative from the 24th District which comprises Clallam, Jefferson and Mason Counties, was born in La Farge, Wisconsin in 1906. He was first elected to the House in 1938 and to Congress of the U. S. in 1944. He is a high school graduate and has taken some special training. He is in the logging business. Belongs to the Elks, Moose, Eagles, Grange, Modern Woodman of America and W.O.W. He is married.



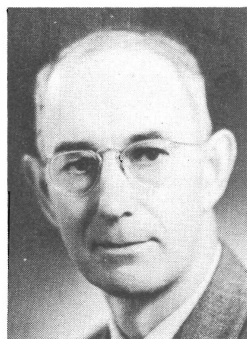
Representatives

SAWYER, LEONARD ALSON (Democrat) Representative from the 25th District of Pierce County, was born in Puyallup in 1925. He graduated from Law School of the University of Washington and is a practicing attorney. This is his first term in the House. He has been a Deputy Prosecuting Attorney and served in the Navy. His affiliations are the Active Club, American Legion, V. F. W. and Eagles. He is married.



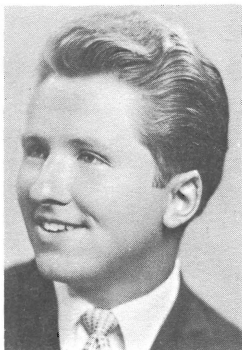
SHROPSHIRE, LINCOLN E. (Republican) Representative from the 14th District of Yakima County, was born in South Bend, Washington in 1900. He holds a B. A. Degree from the State College and an LL. B. Degree from the University of Idaho and is an attorney. He was in the U. S. Navy and also a U. S. Army reservist. He belongs to Lambda Chi Alpha and Phi Alpha Delta fraternities and the Yakima Lodge No. 24 F&Am, Scottish Rite, York Bodies, Afifi Temple A. A. O. N. M. S. and Elks Club. He is married.

SILER, HARRY A. (Republican) Representative from the 20th District of Lewis County, was born in Winlock, Washington in 1898. He was appointed to the House in May 1949 and elected in 1950, 1952 and 1954. Graduated from Washington State College in 1921 with a B. S. Degree. Served in World War I. He is a farmer and is a Past Master of the Grange. He was married in 1923.



SMITH, VERNON A. (Republican) Representative from the 46th District of King County, was born in Seattle, in 1891. Was first elected to the House in 1932 and has served six regular and five special sessions. A graduate of St. Martins College, he is now retired, he served in World War I and is a member of Nile Temple Shrine. Representative Smith was married in 1921.

Representatives



STOCKER, PAUL M. (Democrat) Representative from the 38th District which comprises part of Island and part of Snohomish Counties. He was born in 1924 in Oregon City, Oregon and attended college and law school graduating with an LL.B. Degree. He is in private practice as an attorney at law. This is his second term in the House. During World War II he served in the U.S. Naval Air Corps. Is a member of the American Legion and Elks. Married in 1945.

STROM, JOHN F. (Republican) Representative from the 44th District of King County, was born in the State of Michigan in 1893. Was first elected in 1946 and again in 1950, 1952 and 1954. A graduate of the University of Washington in Pharmacy and Pre-Medical Education. He is a retired druggist and manages personal realty holdings. Member of the B.P.O., Elks, Masonic bodies and Shrine. He is married.



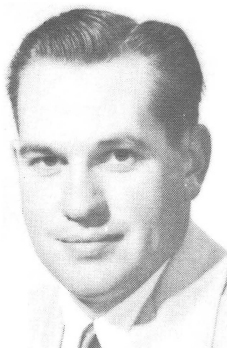
SWAYZE, MRS. THOMAS A. (Republican) Representative from the 26th District of Pierce County, was born in Council Bluffs, Iowa. She has a Bachelor of Arts Degree from the College of Puget Sound. Member of the American Association of University Women, Pi Beta Phi, and P.E.O. Sisterhood. She was married to Thomas A. Swayze in 1923.

TESTU, JEANETTE (Democrat) Representative from the 34th District of King County, was born in Pierre, South Dakota. She is a Normal School graduate and former teacher. Was first elected to the House in 1942. She was National Democratic Committeewoman from the State of Washington. Married in 1920.



Representatives

TIMM, ROBERT D. (Republican) Representative from the 8th District of Lincoln, Adams and Ferry Counties. He is serving his third term in the Legislature. Was born in Harrington in 1921. Attended the University of Washington graduating with a B.A. Degree. During World War II he was in the U.S. Marine Corps. He is now engaged in raising wheat and cattle. Affiliated with Sigma Alpha Epsilon Fraternity, Grange American Legion and Lions. He was married in 1944.



WANG, ARNOLD S. (Republican) Representative from the 23rd District of Kitsap County, was born in Chicago, Illinois in 1900. This is Rep. Wang's second term in the House. Attended grade and high school, considerable training in real estate law and is in real estate and investment business. He is a member of the Eagles and Elks. He is married.

WEDEKIND, MAX (Democrat) Representative from the 34th District of King County was born in San Francisco, California in 1899. First elected to the House in 1944 he is serving his fifth term. Attended the California School of Mechanical Arts and Mission College and has had three years of Business Administration. He is now a Labor Representative, member of the Odd Fellows and Moose. He is married.



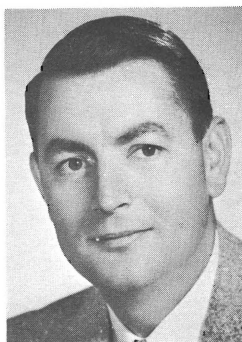
WEITZMAN, WILLIAM A. (Republican) Representative from the 4th District of Spokane County, was born in New York City in 1901. This is his first term in the House. Was a member of the Washington Horse Racing Commission from 1949 to 1953. Graduate of Gonzaga Law School and is now in Investments, Business and Property Management. Belongs to the Elks Lodge. Married in 1926.

Representatives



WINTLER, ELLA (Republican) Representative from the 17th District of Clark County was first elected in 1938. She has served in five regular and four special sessions. She has been a member of the Vancouver Planning Commission. She was born in Vancouver and attended the University of Washington and has an A.B. and A. M. Degree.

YEAROUT, JOHN K. (Republican) Representative from the 21st District of Grays Harbor County, was born in Couer d'Alene, Idaho in 1914. This is his second term in the House. Yearout graduated from the Olympia High School and is engaged in general insurance business and is owner of an agency in Aberdeen. Member of the Eagles and Elks. He was married in 1937.



YOUNG, R. C. BRIGHAM (Democrat) Representative from the 13th District of Grant and Kittitas Counties, was born at Wilkinsburg, Pa. in 1898. He was first elected to the House in 1942 and has served in seven regular and five special sessions. He is a high school graduate and has one year of college. Was mayor of Cle Elum for six years and is a barber by trade. Served in World War I and member of Veterans of Foreign Wars, Elks and Eagles. He is married.

STANDING COMMITTEES OF THE SENATE

1955 SESSION

EMMETT T. ANDERSON, President

VICTOR ZEDNICK, President Pro Tem

Herbert H. Sieler, Secretary

John Buck, Sergeant-at-arms

AGRICULTURE, LIVESTOCK, RECLAMATION AND IRRIGATION (14)--Senators Andrews, Chairman; Dahl, Flanagan, Ganders, Gissberg, Hall, Hofmeister, Knoblauch, Lennart, Nordquist, Raugust, Roup, Winberg, Zahn.

BANKS AND FINANCIAL INSTITUTIONS (15)--Senators Ryder, Chairman; Barlow, Clark, Greive, Happy, Hoff, Hofmeister, Keefe, Lindsay, Riley, Sears, Shannon, Sutherland, Winberg, Zednick.

CITIES, TOWNS AND COUNTIES (15)--Senators Nordquist, Chairman; Peterson, Copeland, Dahl, Gallagher, Ganders, Gissberg, Goodloe, Greive, Keefe, Luvera, Nunamaker, Raugust, Roup, Zahn.

CLAIMS, AUDITING AND EMPLOYMENT (5)--Senators Sears, Chairman; Barlow, Dixon, Gallagher, Hall.

COMMERCE, MANUFACTURING AND TRANSPORTATION (9)--Senators Barlow, Chairman; Bargreen, Copeland, Cowen, Peterson, Ryder, Sears, Sutherland, Todd.

CONSTITUTION, ELECTIONS AND APPORTIONMENT (12)--Senators Zednick, Chairman; Barlow, Gallagher, Ganders, Happy, Hoff, Lindsay, Raugust, Roup, Ryder, Shannon, Todd.

EDUCATION (12)--Senators Lennart, Chairman; Andrews, Dahl, Dixon, Gissberg, Hall, Happy, Knoblauch, Luvera, Raugust, Rogers, Washington.

ENGROSSED AND ENROLLED BILLS (3)--Senators Bargreen, Chairman; Andrews, Knoblauch.

FISHERIES (9)--Senators Peterson, Chairman; Jackson, Lennart, Luvera, Nunamaker, Pearson, Wall, Wilson, Winberg.

GAME AND GAME FISH (9)--Senators Luvera, Chairman; Flanagan, Jackson, Lindsay, Nunamaker, Peterson, Shannon, Sutherland, Zahn.

HIGHER EDUCATION AND LIBRARIES (10)--Senators Shannon, Chairman; Andrews, Clark, Nordquist, Nunamaker, Riley, Rosellini, Ryder, Washington, Zednick.

INSURANCE (7)--Senators Happy, Chairman; Ganders, Goodloe, Greive, Lindsay, Raugust, Zahn.

JUDICIARY (15)--Senators Goodloe, Chairman; Gallagher, Gissberg, Greive, Hoff, Ivy, Lennart, Lindsay, McMullen, Nordquist, Rosellini, Sutherland, Wall, Washington, Zednick.

SENATE STANDING COMMITTEES

LABOR AND INDUSTRIAL INSURANCE (11)--Senators McMullen, Chairman; Andrews, Barlow, Dixon, Ivy, Jackson, Nordquist, Sutherland, Todd, Wilson, Winberg.

LIQUOR CONTROL (15)--Senators Flanagan, Chairman; Riley, Vice-Chairman; Bargreen, Clark, Hoff, Hofmeister, Ivy, Keefe, Luvera, McMullen, Pearson, Peterson, Rogers, Rosellini, Wilson.

MEDICINE AND DENTISTRY (9)--Senators Ganders, Chairman; Copeland, Cowen, Greive, Hoff, Jackson, Sears, Wall, Zahn.

MILITARY AFFAIRS AND CIVILIAN DEFENSE (9)--Senators Dahl, Chairman; Andrews, Hoff, Hofmeister, Knoblauch, McMullen, Nordquist, Wilson, Winberg.

MINES AND MINING (5)--Senators Todd, Chairman; Dahl, Dixon, Lennart, Wilson.

PARKS AND PUBLIC BUILDINGS (9)--Senators Wilson, Chairman; Bargreen, Barlow, Ganders, Greive, Luvera, Nunamaker, Sears, Zahn.

PUBLIC INSTITUTIONS (13)--Senators Hoff, Chairman; Bargreen, Gissberg, Goodloe, Hall, Ivy, Keefe, Knoblauch, Luvera, Peterson, Rosellini, Shannon, Sutherland.

PUBLIC UTILITIES (15)--Senators Copeland, Chairman; Cowen, Dahl, Goodloe, Hall, Happy, Jackson, Lindsay, Rogers, Shannon, Wall, Washington, Winberg, Zahn, Zednick.

ROADS AND BRIDGES (18)--Senators Raugust, Chairman; Barlow, Vice-Chairman; Clark, Ganders, Gissberg, Ivy, Lennart, Lindsay, Luvera, McMullen, Pearson, Rogers, Ryder, Todd, Wall, Washington, Wilson, Zahn.

RULES AND JOINT RULES (13)--Anderson, (*Lt. Governor*), Chairman; Senators Copeland, Cowen, Dahl, Dixon, Flanagan, Happy, McMullen, Rogers, Rosellini, Roup, Sears, Wall, Zednick.

SOCIAL SECURITY AND CHARITABLE INSTITUTIONS (18)--Senators Hall, Chairman; Copeland, Dahl, Dixon, Flanagan, Gissberg, Goodloe, Happy, Hofmeister, Ivy, Jackson, Nunamaker, Raugust, Riley, Rogers, Ryder, Shannon, Todd.

STATE RESOURCES, FORESTRY AND LANDS (10)--Senators Wall, Chairman; Gallagher, Hoff, Lennart, Pearson, Peterson, Riley, Sears, Washington, Wilson.

WAYS AND MEANS (23)--Senators Clark, Chairman; Happy, Vice-Chairman; Ivy, Sub-Chairman of Revenue and Taxation; Sears, Sub-Chairman of Appropriations, Andrews, Bargreen, Barlow, Copeland, Cowen, Dixon, Flanagan, Gallagher, Hall, Keefe, Knoblauch, Lennart, Nordquist, Pearson, Riley, Roup, Ryder, Shannon, Winberg.

SENATE INDIVIDUAL COMMITTEE ASSIGNMENTS 1955

ANDREWS, LLOYD J.--Agriculture, Livestock, Reclamation and Irrigation, Chairman; Education; Engrossed and Enrolled Bills; Higher Education and Libraries; Labor and Industrial Insurance; Military Affairs and Civilian Defense; Ways and Means.

BARGREEN, HOWARD--Engrossed and Enrolled Bills, Chairman; Liquor Control; Commerce, Manufacturing and Transportation; Parks and Public Buildings; Public Institutions; Ways and Means.

BARLOW, RUSSELL C.--Commerce, Manufacturing and Transportation, Chairman; Roads and Bridges, Vice-Chairman; Banks and Financial Institutions, Claims, Auditing and Employment, Constitution, Elections and Apportionment, Labor and Industrial Insurance, Parks and Public Buildings, Ways and Means.

CLARK, ASA V.--Ways and Means, Chairman; Banks and Financial Institutions; Higher Education and Libraries; Liquor Control; Roads and Bridges.

COPELAND, HENRY J.--Public Utilities, Chairman; Cities, Towns and Counties; Commerce, Manufacturing and Transportation; Medicine and Dentistry; Rules and Joint Rules; Social Security and Charitable Institutions; Ways and Means.

COWEN, DR. DAVID C.--Commerce, Manufacturing and Transportation, Medicine and Dentistry, Public Utilities, Rules and Joint Rules, Ways and Means.

DAHL, BJARNE J.--Military Affairs and Civilian Defense, Chairman; Agriculture, Livestock, Reclamation and Irrigation; Cities, Towns and Counties; Education; Mines and Mining; Public Utilities; Rules and Joint Rules; Social Security and Charitable Institutions.

DIXON, GERALD G. "GERRY"--Claims, Auditing and Employment; Education; Labor and Industrial Insurance; Mines and Mining; Rules and Joint Rules; Social Security and Charitable Institutions; Ways and Means.

FLANAGAN, E. J.--Liquor Control, Chairman; Agriculture, Livestock, Reclamation and Irrigation; Game and Game Fish; Rules and Joint Rules; Social Security and Charitable Institutions; Ways and Means.

GALLAGHER, MICHAEL J.--Cities, Towns and Counties; Claims, Auditing and Employment; Constitution, Elections and Apportionment; Judiciary; State Resources, Forestry and Lands, Ways and Means.

GANDERS, STANTON--Medicine and Dentistry, Chairman; Agriculture, Livestock, Reclamation and Irrigation; Cities, Towns and Counties; Constitution, Elections and Apportionment; Insurance; Parks and Public Buildings; Roads and Bridges.

SENATE INDIVIDUAL COMMITTEES

GISSBERG, WILLIAM A.--Agriculture, Livestock, Reclamation and Irrigation, Cities, Towns and Counties, Education, Judiciary, Public Institutions, Roads and Bridges, Social Security and Charitable Institutions.

GOODLOE, WILLIAM C.--Judiciary, Chairman; Cities, Towns and Counties, Insurance, Public Institutions, Public Utilities, Social Security and Charitable Institutions.

GREIVE, R. R. "BOB"--Banks and Financial Institutions; Cities, Towns and Counties; Insurance; Judiciary; Medicine and Dentistry; Parks and Public Buildings.

HALL, TOM--Social Security and Charitable Institutions, Chairman; Agriculture, Livestock, Reclamation and Irrigation; Claims, Auditing and Employment; Education; Public Institutions; Public Utilities; Ways and Means.

HAPPY, JOHN H.--Insurance, Chairman; Banks and Financial Institutions; Constitution, Elections and Apportionment; Education; Public Utilities; Rules and Joint Rules; Social Security and Charitable Institutions; Ways and Means, Vice-Chairman.

HOFF, NEIL J.--Public Institutions, Chairman; Banks and Financial Institutions; Constitution, Elections and Apportionment; Judiciary; Liquor Control; Medicine and Dentistry; Military Affairs and Civilian Defense; State Resources, Forestry and Lands.

HOFMEISTER, LOUIS E.--Agriculture, Livestock, Reclamation and Irrigation; Banks and Financial Institutions; Liquor Control; Military Affairs and Civilian Defense; Social Security and Charitable Institutions.

IVY, EUGENE D.--Ways and Means Sub-Chairman; of Revenue and Taxation; Judiciary; Labor and Industrial Insurance; Liquor Control; Public Institutions; Roads and Bridges; Social Security and Charitable Institutions.

JACKSON, H. N. "BARNEY"--Fisheries; Game and Game Fish; Labor and Industrial Insurance; Medicine and Dentistry; Public Utilities; Social Security and Charitable Institutions.

KEEFE, JAMES--Banks and Financial Institutions; Cities, Towns and Counties; Liquor Control; Public Institutions; Ways and Means.

KNOBLAUCH, REUBEN A.--Agriculture, Livestock, Reclamation and Irrigation; Education; Engrossed and Enrolled Bills; Military Affairs and Civilian Defense; Public Institutions; Ways and Means.

LENNART, ERNEST W.--Education, Chairman; Agriculture, Livestock, Reclamation and Irrigation; Fisheries; Judiciary; Mines and Mining; Roads and Bridges; State Resources Forestry and Lands; Ways and Means.

SENATE INDIVIDUAL COMMITTEES

LINDSAY, RODERICK A.--Banks and Financial Institutions; Constitution, Elections and Apportionment; Game and Game Fish; Insurance; Judiciary; Public Utilities; Roads and Bridges.

LUVERA, PAUL N.--Game and Game Fish, Chairman; Cities, Towns and Counties; Education; Fisheries; Liquor Control; Parks and Public Buildings; Public Institutions; Roads and Bridges.

McMULLEN, DALE--Labor and Industrial Insurance, Chairman; Judiciary; Liquor Control; Military Affairs and Civilian Defense; Roads and Bridges; Rules and Joint Rules.

NORDQUIST, DALE M.--Cities, Towns and Counties, Chairman; Agriculture, Livestock, Reclamation and Irrigation; Higher Education and Libraries; Judiciary; Labor and Industrial Insurance; Military Affairs and Civilian Defense; Ways and Means.

NUNAMAKER, HOMER O.--Cities, Towns and Counties; Fisheries; Game and Game Fish; Higher Education and Libraries; Medicine and Dentistry; Parks and Public Buildings; Social Security and Charitable Institutions.

PEARSON, FRANCIS--Fisheries; Liquor Control; Roads and Bridges; State Resources, Forestry and lands; Ways and Means.

PETERSON, TED G.--Fisheries, Chairman; Cities, Towns and Counties; Commerce, Manufacturing and Transportation; Game and Game Fish; Liquor Control; Public Institutions; State Resources, Forestry and Lands.

RAUGUST, W. C.--Roads and Bridges, Chairman; Agriculture, Livestock, Reclamation and Irrigation; Cities, Towns and Counties; Constitution, Elections and Apportionment; Education; Insurance; Social Security and Charitable Institutions.

RILEY, EDWARD F.--Liquor Control, Vice-Chairman; Banks and Financial Institutions; Higher Education and Libraries; Social Security and Charitable Institutions; State Resources, Forestry and Lands; Ways and Means.

ROGERS, JACK HENRY--Education; Liquor Control; Public Utilities; Roads and Bridges; Rules and Joint Rules; Social Security and Charitable Institutions.

ROSELLINI, ALBERT D.--Higher Education and Libraries; Judiciary; Liquor Control; Public Institutions, Rules and Joint Rules; Ways and Means.

ROUP, HOWARD--Agriculture, Livestock, Reclamation and Irrigation, Cities, Towns and Counties; Constitution, Elections and Apportionment; Rules and Joint Rules; Ways and Means.

RYDER, JOHN N.--Banks and Financial Institutions, Chairman; Commerce, Manufacturing and

SENATE INDIVIDUAL COMMITTEES

Transportation; Constitution, Elections and Apportionment; Higher Education and Libraries; Roads and Bridges; Social Security and Charitable Institutions; Ways and Means.

SEARS, CARLTON IRVING--Claims, Auditing and Employment, Chairman; Banks and Financial Institutions, Commerce, Manufacturing and Transportation; Medicine and Dentistry; Parks and Public Buildings; Rules and Joint Rules, State Resources, Forestry and Lands; Ways and Means, Sub-Chairman of Appropriations.

SHANNON, WILLIAM DAY--Higher Education and Libraries, Chairman; Banks and Financial Institutions; Constitution, Elections and Apportionment; Game and Game Fish; Public Institutions; Public Utilities; Social Security and Charitable Institutions; Ways and Means.

SUTHERLAND, PATRICK D.--Banks and Financial Institutions; Commerce, Manufacturing and Transportation; Game and Game Fish; Judiciary; Labor and Industrial Insurance; Public Institutions.

TODD, JOHN N.--Mines and Mining, Chairman; Commerce, Manufacturing and Transportation; Constitution, Elections and Apportionment; Labor and Industrial Insurance; Roads and Bridges; Social Security and Charitable Institutions.

WALL, HARRY--State Resources, Forestry and Lands, Chairman; Fisheries, Judiciary; Medicine and Dentistry; Public Utilities; Roads and Bridges; Rules and Joint Rules.

WASHINGTON, NAT--Education, Higher Education and Libraries; Judiciary; Public Utilities; Roads and Bridges; State Resources, Forestry and Lands.

WILSON, THEODORE G.--Parks and Public Buildings, Chairman; Fisheries; Labor and Industrial Insurance; Liquor Control; Military Affairs and Civilian Defense; Mines and Mining; Roads and Bridges; State Resources, Forestry and Lands.

WINBERG, ANDREW--Agriculture, Livestock, Reclamation and Irrigation; Banks and Financial Institutions; Fisheries; Labor and Industrial Insurance; Military Affairs and Civilian Defense; Public Utilities; Ways and Means.

ZAHN, GEORGE D.--Agriculture, Livestock, Reclamation and Irrigation; Cities, Towns and Counties; Game and Game Fish; Insurance; Medicine and Dentistry; Parks and Public Buildings; Public Utilities; Roads and Bridges.

ZEDNICK, VICTOR--Constitution, Elections and Apportionment, Chairman; Banks and Financial Institutions; Higher Education and Libraries; Judiciary; Public Utilities; Rules and Joint Rules.

HOUSE OF REPRESENTATIVES
COMMITTEE ASSIGNMENTS
1955 Session

John L. O'Brien, Speaker of the House

S. R. Holcomb, Chief Clerk of the House

Charlie Johnson, Sergeant-at-arms

AGRICULTURE AND LIVESTOCK (15)--Representatives, Rosenberg, Chairman; Neal, Vice-Chairman; Bozarth, Canfield, Carty, Chytil, Clark, Cecil C., Edwards, Hanna, Hyppa, Ovenell, Pence, Ridgway, Robison, Siler.

APPROPRIATIONS (24)--Representatives, Olson, Ole H., Chairman; Edwards, Vice-Chairman; Arnason, Byrne, Canfield, Chytil, Eldridge, Frayn, Gallagher, Hanna, King, Litchman, Mardesich, May, McFadden, Miller, Clyde J., Munro, Neill, Rasmussen, Ruoff, Testu, Wintler, Yearout, Young.

BANKS AND BANKING (17)--Representatives, Hurley, Chairman; Clark, Newman H. Vice-Chairman; Beierlein, Canfield, Cooney, Dore, Folsom, Frayn, Hansen, Julia Butler; Johnston, Jones, Arthur D., Jr., Martin, McDermott, McFadden, Miller, Floyd C.; Munro, Oakes.

CITIES AND COUNTIES (23)--Carmichael, Chairman; Bailey, Vice-Chairman; Chytil, Connor, Donohue, Edwards, Eldridge, Farrar, Hawley, Henry, Johnston, Jones, Mrs. Vincent F., Kirk, Kupka, Loney, McBeath, McFadden, Mundy, Munro, Munsey, Neill, Marshall A., Olsen, Ray, Smith.

COMMERCE, PROFESSIONS AND TRANSPORTATION (17)--Kupka, Chairman; Stocker, Vice-Chairman, Arnason, Beierlein, Carty, Griffith, Holliday, Lorimer, Mast, McCutcheon, Olsen, Ray, Sawyer, Strom, Wang, Weitzman, Wintler, Young.

CONSTITUTION, ELECTIONS AND APPORTIONMENT (15)--Representatives Savage, Chairman; Litchman, Vice-Chairman; Bailey, Brown, Comfort, Hallauer, Henry, Hess, Jones, Arthur D., Jr., Mardesich, Shropshire, Smith, Swayze, Timm, Wang.

EDUCATION (24)--Representatives Hess, Chairman, Huhta, Vice-Chairman; Anderson; Arnason, Clark, Newman H., Fisher, Gordon, Hansen, Julia Butler, Hanson, Herb, Henry, Holliday, Hurley, Hyppa, Jones, Mrs. Vincent F., Kirk, Lybecker, Martin, May, Munsey, Ridgway, Testu, Timm, Wintler, Young.

FISHERIES (13)--Representatives King, Chairman; Wedekind, Vice-Chairman; Arnason, Bernethy, Hawley, Lorimer, Miller, Clyde J., Oakes, Purvis, Ridgway, Ruoff, Sandison, Strom.

FORESTRY, STATE LANDS AND PARKS (15)--Representatives Bernethy, Chairman, Bozarth, Vice-Chairman; Bailey, Folsom, Griffith, Johnston, Jones, Mrs. Vincent F., Kirk, Martin, Miller, Clyde J., Olson, Ole H., Ovenell, Savage, Wedekind, Yearout.

HOUSE STANDING COMMITTEES

GAME AND GAME FISH (13)--Representatives Cooney, Chairman; Martin, Vice-Chairman; Ball, Carmichael, Connor, Eldridge, Griffith, Huhta, Lybecker, Mundy, Pence, Robison, Rosenberg.

HIGHWAYS (33)--Representatives, Hansen, *Julia Butler*, Chairman; Donohue, Vice-Chairman; Anderson, Bailey, Ball, Beierlein, Bernethy, Bozarth, Brown, Byrne, Edwards, Elway, Fisher, Folsom, Gordon, Henry, Huhta, Hyppa, Jones, *Arthur D., Jr.*, Loney, McBeath, Miller, *Floyd C.*, Mundy, Neal, *Mel T.*, Ovenell, Ridgway, Rosenberg, Sandison, Shropshire, Smith, Timm, Wang, Wedekind.

INDUSTRIAL INSURANCE (16)--Representatives Brown, Chairman; Miller, Vice-Chairman, Adams, Bernethy, Comfort, Heckendorn, Huhta, Hurley, King, Litchman, Oakes, Olson, *Ole H.*, Petrie, Sandison, Smith, Yearout.

INSURANCE (9)--Representatives Holliday, Chairman; Ruoff, Vice-Chairman; Beierlein, Comfort, Cooney, Dore, Hawley, Sawyer, Yearout.

JUDICIARY (18)--Representatives Dore, Chairman; Purvis, Vice-Chairman; Clark, *Newman H.*, Cooney, Gallagher, Hanna, Harris, Heckendorn, Johnston, Litchman, Mardesich, McCutcheon, Neill, *Marshall A.*, Petrie, Sawyer, Shropshire, Stocker, Weitzman.

LABOR (16)--Representatives Henry, Chairman; Munsey, Vice-Chairman; Brown, Carmichael, Comfort, Elway, Farrar, Fisher, Hanson, *Herb*, Hess, Holliday, Loney, McDermott, Neal, *Mel T.*, Olsen, Ray, Ruoff.

LEGISLATIVE PROCESSES (14)--Representatives Farrar, Chairman; Swayze, Vice-Chairman; Fisher, Folsom, Harris, Heckendorn, Jones, *Arthur D., Jr.*, Kirk, Lybecker, Martin, McDermott, Pence, Sawyer, Weitzman.

LIQUOR CONTROL (18)--Representatives, Olsen, Ray, Chairman; Connor, Vice-Chairman; Bernethy, Byrne, Carmichael, Cooney, Farrar, Frayn, Harris, Heckendorn, Jones, *Arthur D., Jr.*, King, McCutcheon, Miller, *Floyd C.*, Ruoff, Stocker, Strom, Wedekind.

MEDICINE, DENTISTRY AND DRUGS (15)--Representatives Huhta, Chairman; Strom, Vice-Chairman; Adams, Elway, Gallagher, Gordon, Jones, *Mrs. Vincent F.*, McCutcheon, McFadden, Munro, Munsey, Purvis, Rosenberg, Swayze, Wedekind.

MEMORIALS (7)--Representatives Anderson, Chairman; Ball, Vice-Chairman; Chytil, Clark, *Newman H.*, Jones, *Mrs. Vincent F.*, Lorimer, Testu.

MILITARY, VETERANS AND CIVIL DEFENSE (15)--Representatives Hyppa, Chairman; Griffith, Vice-Chairman; Canfield, Elway, Holliday, Hurley, Kupka, Mast, Mundy, Neill, *Marshall A.*, Ovenell, Petrie, Purvis, Rosenberg, Young.

HOUSE STANDING COMMITTEES

PUBLIC UTILITIES (16)--Representatives McCutcheon, Chairman; Savage, Vice-Chairman; Bailey, Bozarth, Byrne, Eldridge, Elway, Farrar, Griffith, Hanna, Hansen, *Julia Butler*, Kupka, May, Munsey, Rasmussen, Wintler.

RECLAMATION, CONSERVATION AND WATERWAYS (13)--Representatives Mundy, Chairman; Wedekind, Vice-Chairman; Clark, *Cecil C.*, Donohue, Eldridge, Hallauer, Hanna, Hawley, Kupka, Lybecker, Olson, *Ole H.*, Pence, Shropshire.

REVENUE AND TAXATION (23)--Representatives Hallauer, Chairman; Hanson, *Herb*, Vice-Chairman; Carty, Clark, *Cecil C.*, Connor, Dore, Harris, Heckendorn, Hess, Hurley, Loney, McBeath, McDermott, Neal, *Mel T.*, Oakes, Olsen, *Ray*, Purvis, Robison, Savage, Sawyer, Siler, Stocker, Weitzman.

RULES AND ORDER (15)--Representatives O'Brien, Chairman, Ball, Clark, *Newman H.*, Frayn, Gallagher, Gordon, Johnston, Mardesich, Miller, *Floyd C.*, Neill, *Marshall A.*, Rasmussen, Ridgway, Sandison, Testu, Young.

SOCIAL SECURITY AND PUBLIC ASSISTANCE (19)--Representatives Beierlein, Chairman; McFadden, Vice-Chairman; Adams, Anderson, Ball, Bozarth, Comfort, Connor, Dore, Gallagher, Gordon, King, McBeath, Miller, *Clyde J.*, Miller, *Floyd C.*, Neal, *Mel T.*, Petrie, Testu, Wang.

STATE GOVERNMENT (14)--Representatives Carty, Chairman; Munro, Vice-Chairman; Canfield, Donohue, Hallauer, Hansen, *Julia Butler*, Kirk, Mardesich, Mast, Rasmussen, Savage, Siler, Smith, Swayze.

STATE INSTITUTIONS AND BUILDINGS (18)--Representatives Donohue, Chairman; Sawyer, Vice-Chairman; Adams, Brown, Carmichael, Carty, Hanson, *Herb*, Hess, Hyppa, Litchman, Lorimer, Mast, May, Robison, Siler, Stocker, Timm, Wintler.

WAYS AND MEANS (10)--Representatives Edwards, Chairman; Frayn, Vice-Chairman; Chytil, Clark, *Cecil C.*, Hallauer, Hanson, *Herb*, Hess, Loney, Olson, *Ole H.*, Rasmussen.

HOUSE OF REPRESENTATIVES - 1955
INDIVIDUAL COMMITTEE ASSIGNMENTS

ADAMS, DR. ALFRED O.--Industrial Insurance, Medicine, Dentistry and Drugs; Social Security and Public Assistance; State Institutions and Buildings.

ANDERSON, EVA--Memorials, Chairman; Education; Highways; Social Security and Public Assistance.

ARNASON, HAL G., JR.--Appropriations; Commerce, Professions and Transportation; Education; Fisheries.

BAILEY, ROBERT C.--Cities and Counties, Vice Chairman; Constitution, Elections and Apportionment; Forestry, State Lands and Parks; Highways; Public Utilities.

BALL, HOWARD T.--Memorials, Vice-Chairman; Game and Game Fish; Highways; Rules and Order; Social Security and Public Assistance.

BEIERLEIN, W. J.--Social Security and Public Assistance, Chairman; Banks and Banking; Commerce, Professions and Transportation; Highways; Insurance.

BERNETHY, ROBERT "BOB"--Forestry, State Lands and Parks, Chairman; Fisheries, Highways; Industrial Insurance; Liquor Control.

BOZARTH, HORACE W.--Forestry, State Lands and Parks, Vice-Chairman; Agriculture and Livestock; Highways; Public Utilities; Social Security and Public Assistance.

BROWN, GORDON J.--Industrial Insurance, Chairman; Constitution, Elections and Apportionment; Highways; Labor; State Institutions and Buildings.

BYRNE, THAD--Appropriations; Highways; Liquor Control; Public Utilities.

CANFIELD, DAMON R.--Agriculture and Livestock; Appropriations; Banks and Banking; Military, Veterans and Civil Defense; State Government.

CARMICHAEL, WALLY--Cities and Counties, Chairman; Game and Game Fish; Labor; Liquor Control; State Institutions and Buildings.

CARTY, W. E.--State Government, Chairman; Agriculture and Livestock; Commerce, Professions and Transportation; Revenue and Taxation; State Institutions and Buildings.

CHYTIL, JOE--Agriculture and Livestock; Appropriations; Cities and Counties; Memorials; Ways and Means.

CLARK, CECIL C.--Agriculture and Livestock; Reclamation, Conservation and Waterways; Revenue and Taxation; Ways and Means.

CLARK, NEWMAN H.--Banks and Banking, Vice-chairman; Education; Judiciary; Memorials; Rules and Order.

COMFORT, A. B.--Constitution, Elections and Apportionment; Industrial Insurance; Insurance; Labor; Social Security and Public Assistance.

HOUSE INDIVIDUAL COMMITTEE ASSIGNMENTS

CONNOR, FRANK--Liquor Control, Vice-Chairman; Cities and Counties; Game and Game Fish; Revenue and Taxation; Social Security and Public Assistance.

COONEY, JOHN L.--Game and Game Fish, Chairman; Banks and Banking; Insurance; Judiciary; Liquor Control.

DONOHUE, DEWEY C.--State Institutions and Buildings, Chairman; Highways, Vice-Chairman; Cities and Counties; Reclamation, Conservation and Waterways; State Government.

DORE, FRED H.--Judiciary, Chairman; Banks and Banking; Insurance; Revenue and Taxation; Social Security and Public Assistance.

EDWARDS, A. E.--Ways and Means, Chairman; Appropriations, Vice-Chairman; Agriculture and Livestock; Cities and Counties; Highways.

ELDRIDGE, DON--Appropriations; Cities and Counties; Game and Game Fish; Public Utilities; Reclamation, Conservation and Waterways.

ELWAY, PARRY S., JR.--Highways; Labor; Medicine, Dentistry and Drugs; Military, Veterans and Civil Defense; Public Utilities;

FARRAR, A. E. "AL"--Legislative Processes, Chairman; Cities and Counties; Labor; Liquor Control; Public Utilities.

FISHER, WILLIAM A.--Education; Highways; Labor; Legislative Processes.

FOLSOM, MORRILL F.--Banks and Banking; Forestry, State Lands and Parks; Highways; Legislative Processes.

FRAYN, R. MORT--Ways and Means, Vice-Chairman; Appropriations; Banks and Banking; Liquor Control; Rules and Order.

GALLAGHER, BERNARD J.--Appropriations; Judiciary; Medicine, Dentistry and Drugs; Rules and Order; Social Security and Public Assistance.

GORDON, J. CHESTER--Education; Highways; Medicine, Dentistry and Drugs; Rules and Order; Social Security and Public Assistance.

GRIFFITH, EARL G.--Military, Veterans and Civil Defense, Vice-Chairman; Commerce, Professions and Transportation; Forestry, State Lands and Parks; Game and Game Fish; Public Utilities.

HALLAUER, WILBUR G.--Revenue and Taxation, Chairman; Constitution, Elections and Apportionment; Reclamation, Conservation and Waterways; State Government; Ways and Means.

Hanna, H. B. "JERRY"--Agriculture and Livestock; Appropriations; Judiciary; Public Utilities; Reclamation, Conservation and Waterways.

HANSEN, JULIA BUTLER--Highways, Chairman; Banks and Banking; Education; Public Utilities; State Government.

HOUSE INDIVIDUAL COMMITTEE ASSIGNMENTS

HANSON, HERB--Revenue and Taxation, Vice-Chairman; Education; Labor; State Institutions and Buildings; Ways and Means.

HARRIS, EDWARD F.--Judiciary; Legislative Processes; Liquor Control; Revenue and Taxation.

HAWLEY, DWIGHT S.--Cities and Counties; Fisheries; Insurance; Reclamation, Conservation and Waterways.

HECKENDORN, HENRY--Industrial Insurance; Judiciary; Legislative Processes; Liquor Control; Revenue and Taxation.

HENRY, AL--Labor, Chairman; Cities and Counties; Constitution, Elections and Apportionment; Education; Highways.

HESS, ANDY--Education, Chairman; Constitution, Elections and Apportionment; Labor; Revenue and Taxation; State Institutions and Buildings; Ways and Means.

HOLLIDAY, MARK V.--Insurance, Chairman; Commerce, Professions and Transportation; Education; Labor; Military, Veterans and Civil Defense.

HUHTA, ELMER--Medicine, Dentistry and Drugs, Chairman; Education, Vice-Chairman; Game and Game Fish; Highways; Industrial Insurance.

HURLEY, MRS. JOSEPH E.--Banks and Banking, Chairman; Education; Industrial Insurance; Military, Veterans and Civil Defense; Revenue and Taxation.

HYPPIA, ELMER A.--Military, Veterans and Civil Defense, Chairman; Agriculture and Livestock; Education; Highways; State Institutions and Buildings.

JOHNSTON, ELMER E.--Banks and Banking; Cities and Counties; Forestry, State Lands and Parks; Judiciary; Rules and Order.

JONES, ARTHUR D., JR.--Banks and Banking; Constitution, Elections and Apportionment; Highways; Legislative Processes; Liquor Control.

JONES, MRS. VINCENT F.--Cities and Counties; Education; Forestry, State Lands and Parks; Medicine, Dentistry and Drugs; Memorials.

KING, CHET--Fisheries, Chairman; Appropriations; Industrial Insurance; Liquor Control; Social Security and Public Assistance.

KIRK, DOUGLAS G. "DOUG"--Cities and Counties; Education; Forestry, State Lands and Parks; Legislative Processes; State Government.

KUPKA, GEORGE W.--Commerce, Professions and Transportation, Chairman; Cities and Counties; Military, Veterans and Civil Defense; Public Utilities; Reclamation, Conservation and Waterways.

LITCHMAN, MARK, JR.--Constitution, Elections and Apportionment, Vice-Chairman; Appropriations; Industrial Insurance; Judiciary; State Institutions and Buildings.

HOUSE INDIVIDUAL COMMITTEE ASSIGNMENTS

LONEY, MILTON R.--Cities and Counties; Highways; Labor; Revenue and Taxation; Ways and Means.

LORIMER, CLAUDE H.--Commerce, Professions and Transportation; Fisheries; Memorials; State Institutions and Buildings.

LYBECKER, GUS--Education; Game and Game Fish; Legislative Processes; Reclamation, Conservation and Waterways.

MARDESICH, AUGUST P.--Appropriations; Constitution, Elections and Apportionment; Judiciary; Rules and Order; State Government.

MARTIN, TOM--Game and Game Fish, Vice-Chairman; Banks and Banking; Education; Forestry, State Lands and Parks; Legislative Processes.

MAST, FRED R.--Commerce, Professions and Transportation; Military, Veterans and Civil Defense; State Government; State Institutions and Buildings.

MAY, CATHERINE D.--Appropriations; Education; Public Utilities; State Institutions and Buildings.

MCBEATH, MALCOLM--Cities and Counties; Highways; Revenue and Taxation; Social Security and Public Assistance.

MCCUTCHEON, JOHN G.--Public Utilities, Chairman; Commerce, Professions and Transportation; Judiciary; Liquor Control; Medicine, Dentistry and Drugs.

MCDERMOTT, DONALD F.--Banks and Banking; Labor; Legislative Processes; Revenue and Taxation.

McFADDEN, DR. JAMES L.--Social Security and Public Assistance, Vice-Chairman; Appropriations; Banks and Banking; Cities and Counties; Medicine, Dentistry and Drugs.

MILLER, CLAUDE J. "JIM"--Industrial Insurance, Vice-Chairman; Appropriations; Fisheries; Forestry, State Lands and Parks; Social Security and Public Assistance.

MILLER, FLOYD C.--Banks and Banking; Highways; Liquor Control; Rules and Order; Social Security and Public Assistance.

MUNDY, ROY--Reclamation, Conservation and Waterways, Chairman; Cities and Counties; Game and Game Fish; Highways; Military, Veterans and Civil Defense.

MUNRO, ED--State Government, Vice-Chairman; Appropriations; Banks and Banking; Cities and Counties; Medicine, Dentistry and Drugs.

MUNSEY, CLAUDE V.--Labor, Vice-Chairman; Cities and Counties; Education; Medicine, Dentistry and Drugs; Public Utilities.

NEAL, MEL T.--Agriculture and Livestock, Vice-Chairman, Highways; Labor; Revenue and Taxation; Social Security and Public Assistance.

HOUSE INDIVIDUAL COMMITTEE ASSIGNMENTS

NEILL, MARSHALL A.--Appropriations; Cities and Counties; Judiciary; Military, Veterans and Civil Defense; Rules and Order.

OAKES, HARTNEY A.--Banks and Banking; Fisheries; Industrial Insurance; Revenue and Taxation.

O'BRIEN, JOHN L.--Rules and Order, Chairman;

OLSEN, RAY--Liquor Control, Chairman; Cities and Counties; Commerce, Professions and Transportation; Labor; Revenue and Taxation.

OLSON, OLE H.--Appropriations, Chairman; Forestry, State Lands and Parks; Industrial Insurance; Reclamation, Conservation and Waterways; Ways and Means.

OVENELL, JAMES T.--Agriculture and Livestock; Forestry, State Lands and Parks; Highways; Military, Veterans and Civil Defense.

PENCE, DELBERT--Agriculture and Livestock; Game and Game Fish; Legislative Processes; Reclamation, Conservation and Waterways.

PETRIE, HAROLD J.--Industrial Insurance; Judiciary; Military, Veterans and Civil Defense; Social Security and Public Assistance.

PURVIS, RALPH--Judiciary, Vice-Chairman; Fisheries, Medicine, Dentistry and Drugs; Military, Veterans and Civil Defense; Revenue and Taxation.

RASMUSSEN, A. L. "SLIM"--Appropriations; Public Utilities; Rules and Order; State Government; Ways and Means.

RIDGWAY, EMMA ABBOTT--Agriculture and Livestock; Education; Fisheries; Highways; Rules and Order.

ROBISON, LESTER L.--Agriculture and Livestock; Game and Game Fish; Revenue and Taxation; State Institutions and Buildings.

ROSENBERG, K. O.--Agriculture and Livestock, Chairman; Game and Game Fish; Highways; Medicine, Dentistry and Drugs; Military, Veterans and Civil Defense.

RUOFF, RICHARD--Insurance, Vice-Chairman; Appropriations; Fisheries; Labor; Liquor Control.

SANDISON, GORDON--Fisheries; Highways; Industrial Insurance; Rules and Order.

SAVAGE, CHARLES R.--Constitution, Elections and Apportionment, Chairman; Public Utilities, Vice-Chairman; Forestry, State Lands and Parks; Revenue and Taxation; State Government.

SAWYER, LEONARD A.--State Institutions and Buildings, Vice-Chairman; Commerce, Professions and Transportation; Insurance; Judiciary; Legislative Processes; Revenue and Taxation.

SHROPSHIRE, LINCOLN E.--Constitution, Elections and Apportionment; Highways; Judiciary; Reclamation, Conservation and Waterways.

HOUSE INDIVIDUAL COMMITTEE ASSIGNMENTS.

SILER, HARRY A.--Agriculture and Livestock; Revenue and Taxation; State Government; State Institutions and Buildings.

SMITH, VERNON A.--Cities and Counties, Constitution, Elections and Apportionment; Highways; Industrial Insurance; State Government.

STOCKER, PAUL M.--Commerce, Professions and Transportation, Vice-Chairman; Judiciary; Liquor Control; Revenue and Taxation; State Institutions and Buildings.

STROM, JOHN F.--Medicine, Dentistry and Drugs, Vice-Chairman; Commerce, Professions and Transportation; Fisheries; Liquor Control.

SWAYZE, MRS. THOMAS A.--Legislative Processes, Vice-Chairman; Constitution, Elections and Apportionment; Medicine, Dentistry and Drugs; State Government.

TESTU, JEANETTE--Appropriations; Education; Memorials; Rules and Order; Social Security and Public Assistance.

TIMM, ROBERT D.--Constitution, Elections and Apportionment; Education; Highways; State Institutions and Buildings.

WANG, ARNOLD S.--Commerce, Professions and Transportation; Constitution, Elections and Apportionment; Highways; Social Security and Public Assistance.

WEDEKIND, MAX--Fisheries, Vice-Chairman; Reclamation, Conservation and Waterways, Vice-Chairman; Forestry, State Lands and Parks; Highways; Liquor Control; Medicine, Dentistry and Drugs.

WEITZMAN, WILLIAM A.--Commerce, Professions and Transportation; Judiciary; Legislative Processes; Revenue and Taxation.

WINTLER, MISS ELLA--Appropriations; Commerce, Professions and Transportation; Education; Public Utilities; State Institutions and Buildings.

YEAROUT, JOHN K.--Appropriations; Forestry, State Lands and Parks; Industrial Insurance; Insurance.

YOUNG, R. C. BRIGHAM--Appropriations; Commerce, Professions and Transportation; Education; Military, Veterans and Civil Defense; Rules and Order.