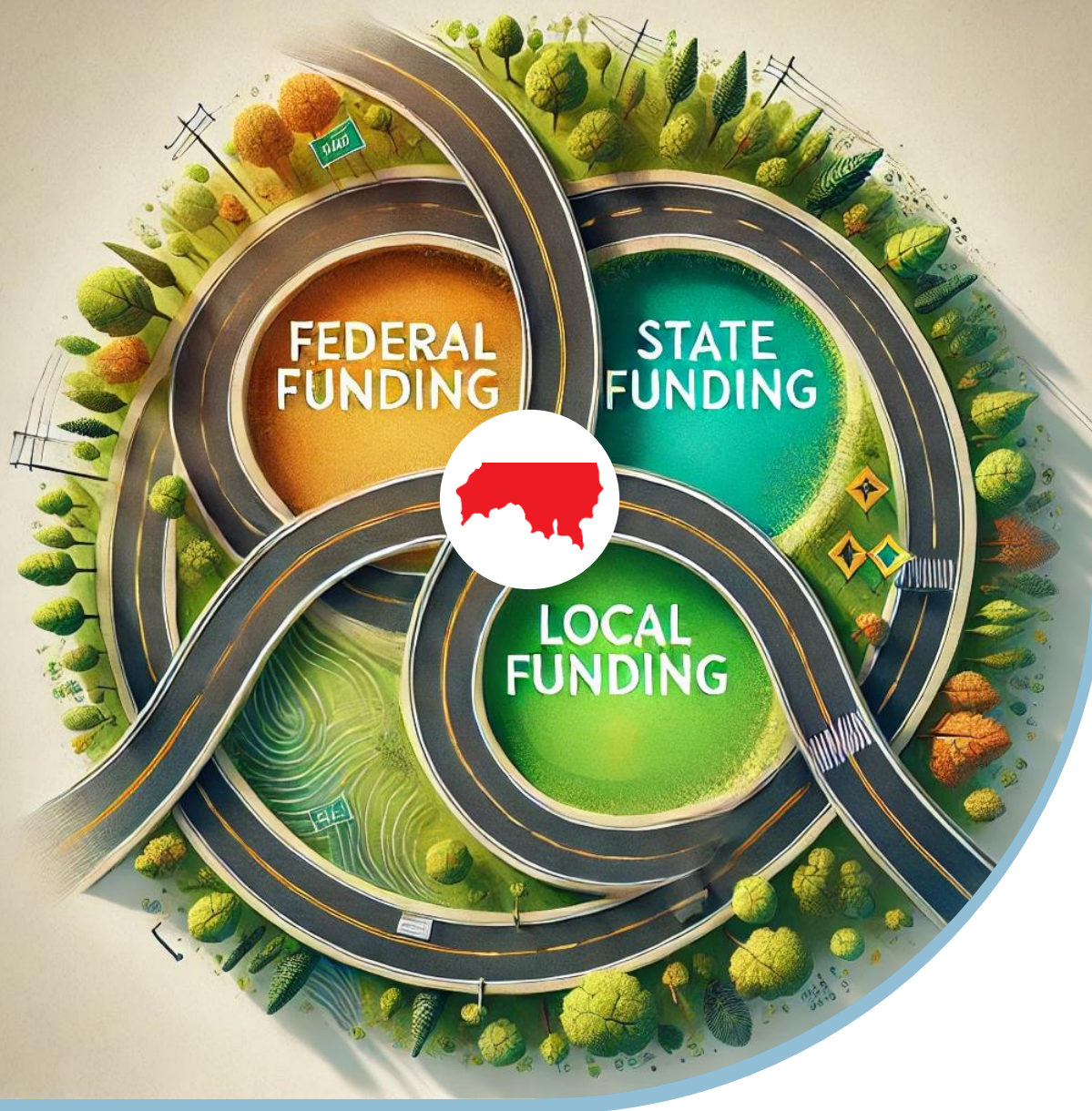


An aerial photograph of a two-lane road with a double yellow line, winding through a dense forest. The trees are mostly green, with some showing early autumn colors. The lighting is soft, suggesting late afternoon or early morning.

JOINT TRANSPORTATION COMMITTEE

12/11/2024



The Colville Indian Reservation was established by executive order on April 9th, 1872.



We are a large land-based Tribe located in Eastern Washington.



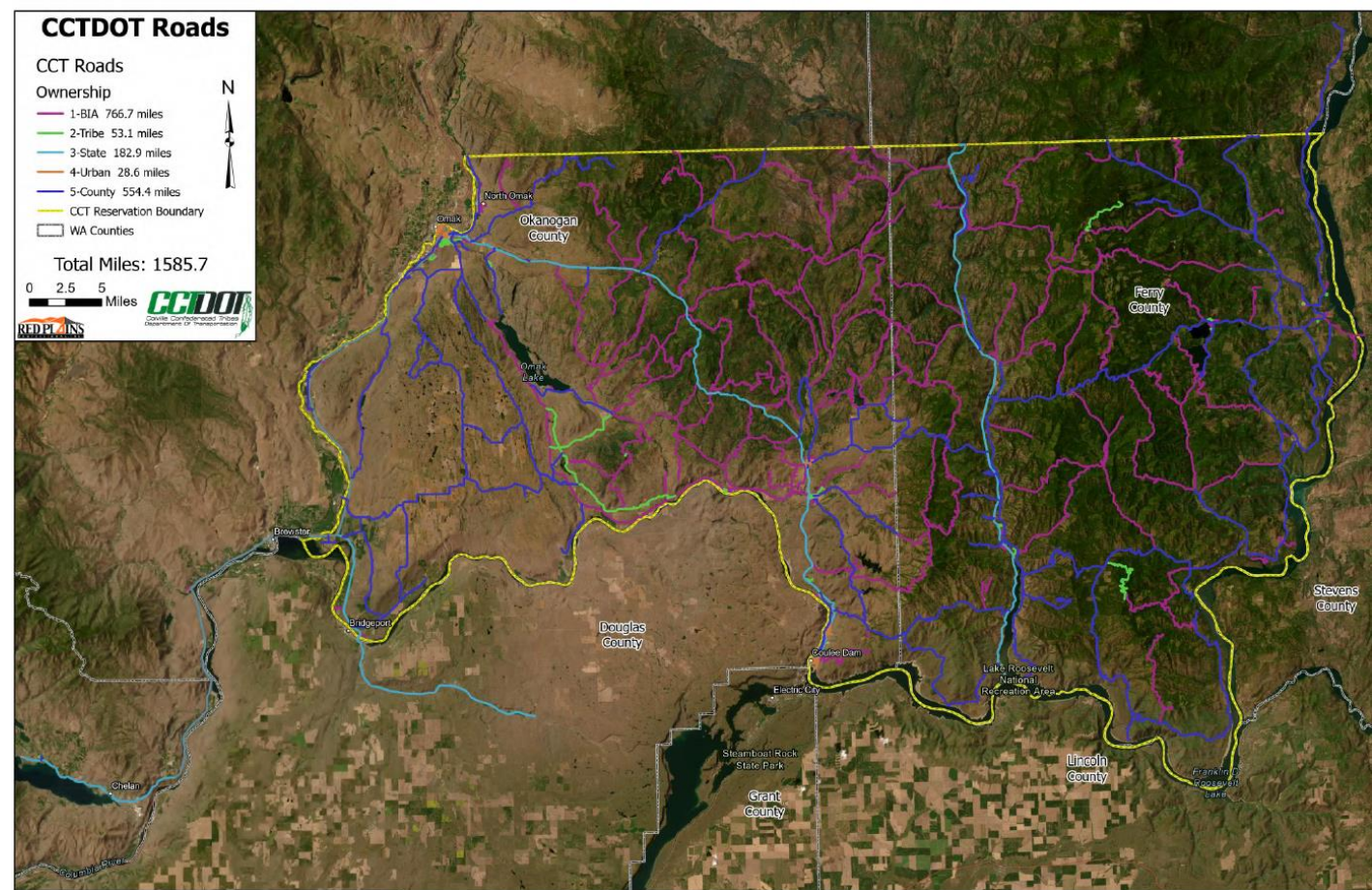
The reservation encompasses more than 1.4 million acres of land.



It contains several state highways, county roads, and BIA roadways. U.S. Route 97, which runs through the Reservation, is the only 24/7 commercial port of entry in Eastern Washington.

Various Road Ownership

- The Colville Reservation has approximately 7,000 miles of road managed by a number of jurisdictions. Most of this inventory is the responsibility of the tribal programs or the Tribal Department of Transportation.
- Approximately 183 miles are managed by the Washington State Department of Transportation
- Another 554 miles are managed by Okanogan and Ferry counties.
- The Tribes and Bureau of Indian Affairs (“BIA”) manage the remainder.



The annual allocation from BIA has averaged just over **5 million dollars.**

A photograph of a road with a large pothole repair in progress. The road is paved with asphalt, and the pothole is filled with a yellowish material. In the distance, two cars are visible on the road. The background shows a forested hillside under a clear sky. A large blue geometric graphic is overlaid on the left side of the image, containing the text.

Estimated Cost To Fix All Roads.

The estimated cost to repair roads on the reservation is approximately **\$1 Million/ Mile.**



April 1, 2021

Dear ForwardWA:

I am writing this letter to encourage action be taken on Silver Creek Road in southern Ferry County, Washington. Silver Creek Road is located just outside of Inchelium, Washington, and heads south from Bridge Creek Road. Inchelium School District No. 70 uses Silver Creek Road for its 180-day school year calendar which is about half the calendar year to transport students to and from school. This impacts 10 students twice per day and their families several times per month as they come to school events as well as travel to purchase for their child's needs such as classroom supplies and clothing. Pictures included in this letter illustrate the poor conditions of the road.

The speed limit is 50 miles per hour and you can see these pictures show how difficult it would be and disastrous to drive the speed limit without damage to the individual's vehicle. Then, imagine damage to school buses. In many places on the road, the pot holes are so deep, drivers must drive off the road to get past the damaged area. Again, I urge the Colville Business Council support improvements to the road through efforts made by ForwardWA to make it safer for vehicle travel! Please contact me at 509.722.6181x100 (w) or 509.680.0188 (c) if you care to discuss this matter further.

Thank you,

Kim Spacek

Kim Spacek
Superintendent



Silver Creek Road



The Tribe's priority transportation project this year is a 19-mile section of Silver Creek Road.



Inchelium School District No 70. uses Silver Creek Road for its 180-day school year to transport students to and from school.



In many places on the road, the pot holes are so deep drivers must drive off the road to get past the damaged areas.



County Road Administration Board's County Local Road Grant Program

01

Currently there are no state or federal grant programs for the preservation and improvement of county local roads.

02

1,633 lane miles are within or provide direct access to Tribal lands.

03

2,151 lane miles provide access to schools, fire/EMS stations, and other government facilities.

04

For the five-year period of 2019 thru 2023, there have been a total of 107 fatal collisions and 414 serious injury collisions on county local roads. This represents the death of 111 people and serious injury of 480 individuals.