

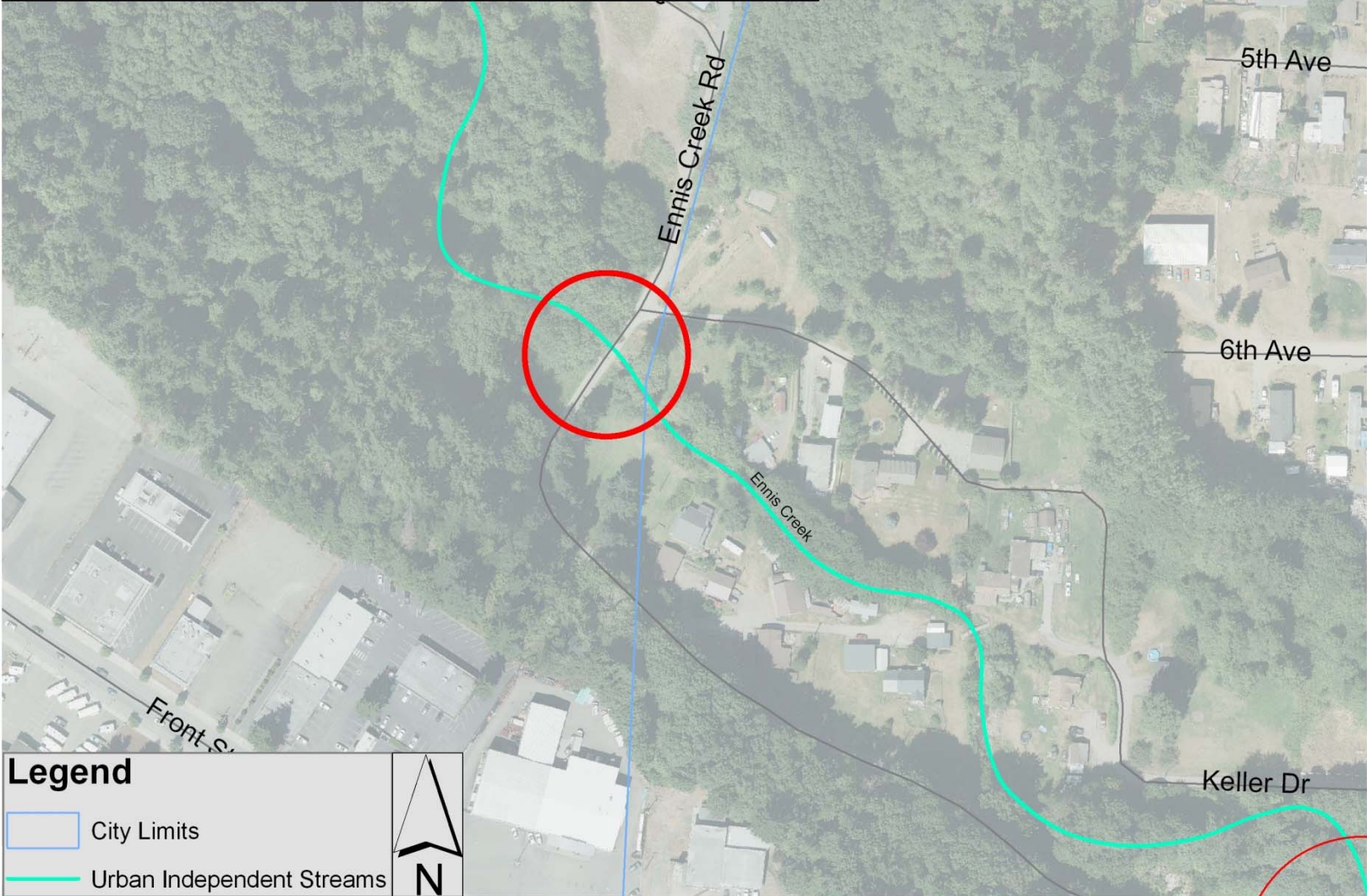
Ennis Creek Fish Passage & Estuary Restoration

Mike McHenry

Habitat Restoration Manager

Lower Elwha Klallam Tribe

Ennis Creek Road culvert location



Ennis Creek Culverts Inlet



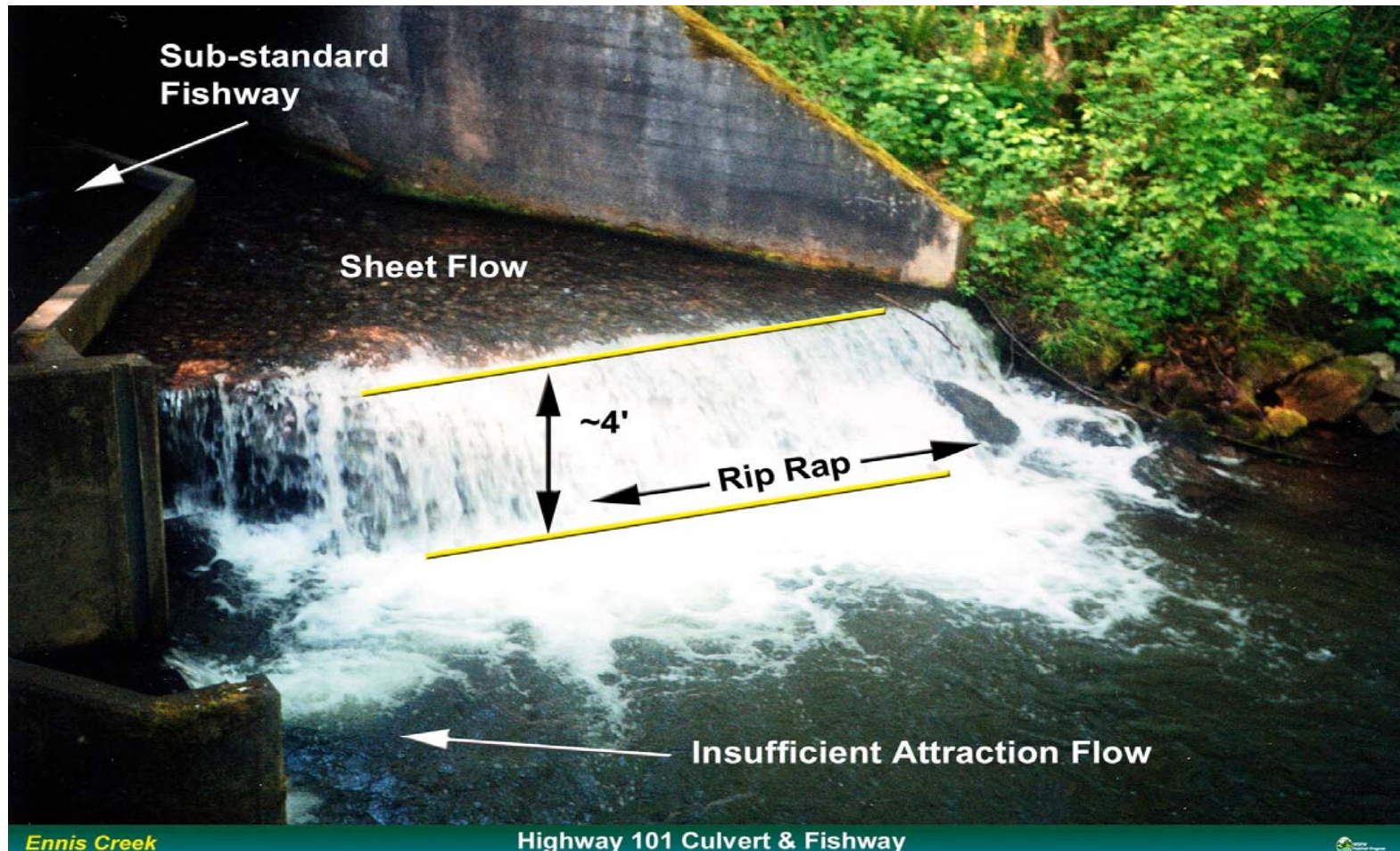
Fall Flooding Ennis Creek



Ennis Channelization at Rayonier



Ennis Creek Fishway



Clogged Fishway at Ennis



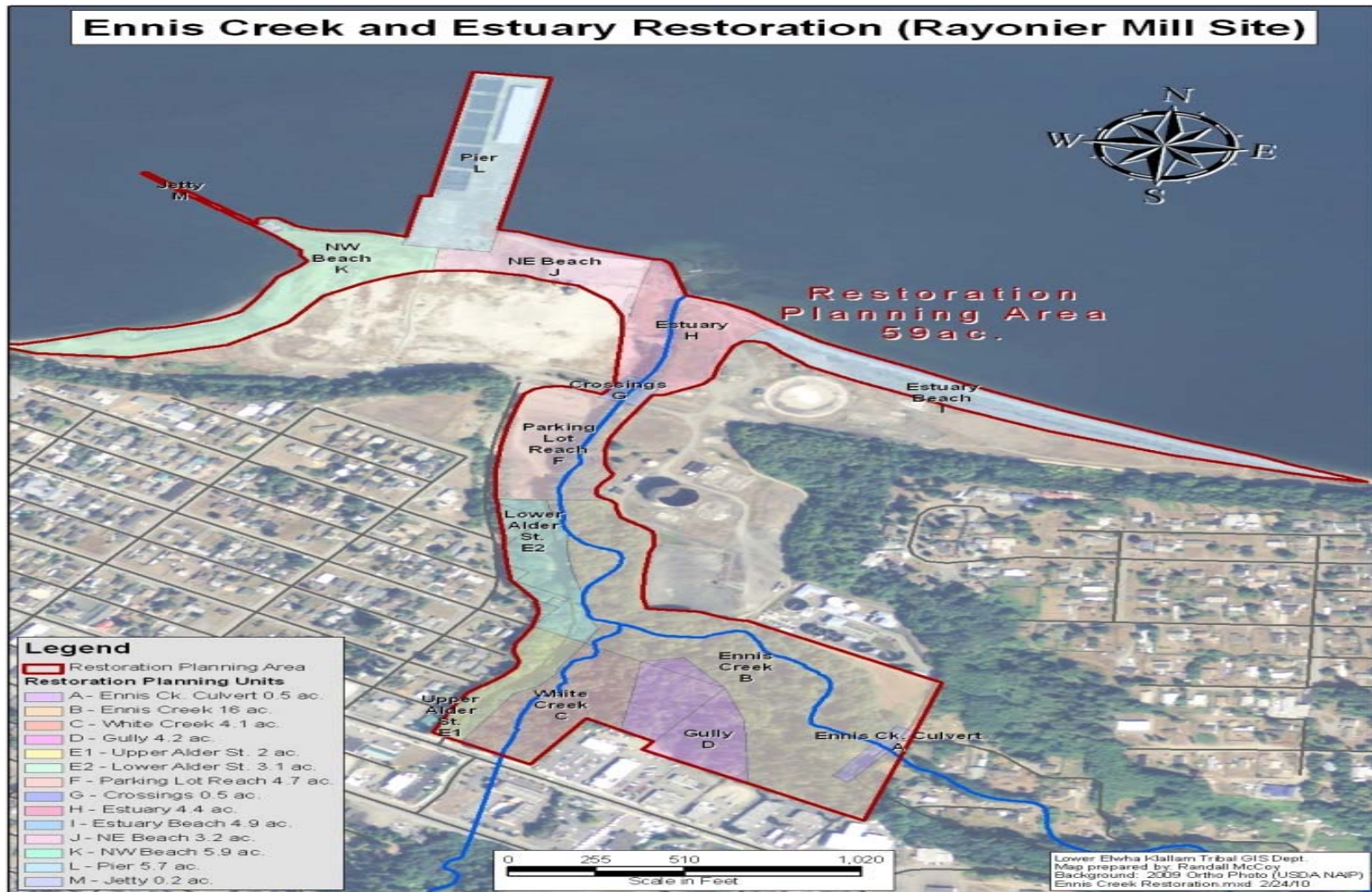
**Chronically
Clogged with
Sediment**

Ennis Creek

Highway 101 Fishway



Restoration Vision for Ennis



Questions?

Mike McHenry

360-457-4012, ext 7492

Mike.mchenry@elwha.org