

# DIRECTORY



WASHINGTON  
PAMPHLET

## Washington State Legislature

38th.  
**SESSION**  
1963

Published By  
**VICTOR A. MEYERS**  
Secretary of State

## TABLE OF CONTENTS

	PAGE
Preface. . . . .	1
Functions of the Legislature . . . .	2
Senate Roster. . . . .	4
Senate Biographies . . . . .	5
House of Representatives Roster. . .	20
House of Representatives Biographies	22
Legislative District Map of Wash. ..	26
The Press. . . . .	51



## PREFACE

This "1963 Pictorial Directory of the Washington State Legislature" containing pictures and biographical material about the members is designed to provide information of interest to the general public. I trust it will be useful to the citizens of the State in their contacts with the members of both Houses.

Many states publish an official "Blue Book" containing information about their elected and appointed state officials. Since lack of funds make this prohibitive in Washington, we offer this smaller volume.

In presenting this Directory, I hope members of the 38th Legislature will find this a useful reference work as well as a memento of their service in the 1963 Legislature.

## ~ THE STATE LEGISLATURE ~

Is made up of two houses consisting of 49 Senators and 99 Representatives, meeting biennially in January of each odd year for a 60-day session. The Governor may proclaim or call a special session at other times but must state the purposes for which a special session is called.

The Legislature is provided for by the State Constitution and without its action there would be no elections, no registration, no public schools and no municipalities.

It regulates the citizen's civil rights and duties, secures him in the tenure of his property and makes most of the rules that govern his daily life.

The Legislature is charged with the making, modification or repealing of the laws and with the raising and appropriation of the revenues. It also establishes duties that state administrative authorities shall perform.

In presenting this Directory, I wish to express my sincere thanks to the following: Hon. John L. O'Brien, Speaker of the House, Hon. Edward F. Riley, President Pro-Tem of the Senate, S. R. "Si" Holcomb, Chief Clerk of the House, Ward Bowden, Secretary of the Senate and the members of the 1963 Legislature for their cooperation in providing information and pictures used in this book.



VICTOR A. MEYERS  
Secretary of State

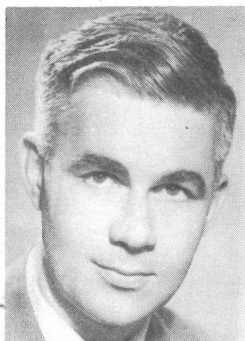
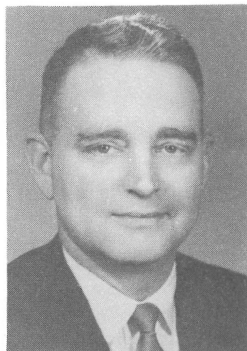
**THE SENATE  
OF THE STATE  
OF  
WASHINGTON**

STATE OF WASHINGTON  
**ROSTER OF MEMBERS**  
State Senate

NAME	ADDRESS	DIST. NO.	POLITICAL PARTY
ATWOOD, R. Frank	317 Park Ridge, Bellingham	42	R
BAILEY, Robert C.	602 W. 1st St., South Bend	19	D
CHARETTE, Robert L.	415 W. 4th St., Aberdeen	21	D
CHYTIL, Joe	1274 5th St., Chehalis	20	R
CONNOR, Frank	408 20th S., Seattle	33	D
COONEY, John L.	4403 N. Adams, Spokane	5	D
COWEN, David C.	S. 223 Coeur d'Alene, Spokane	7	D
DeGARMO, Victor F. "Vic"	14th & Capitol Way, Olympia	22	D
DONOHUE, Dewey C.	506 E. Richmond, Dayton	10	D
DORE, Fred H.	3721 E. Marlon, Seattle	37	D
DURKAN, Martin J.	4040 W. Lake Sammamish Blvd. So., Issaquah	47	D
ENGLAND, Jack	4703 11th N.E., Seattle	32	R
FOLEY, Frank W.	3924 Wauna Vista Drive, Vancouver	49	D
FOSTER, F. Stuart	306 Hillview, Selah	14	R
FREISE, Herbert H.	932 Frazier Dr., Walla Walla	11	R
GALLAGHER, Michael J.	8045 Burke N., Seattle	45	D
GISSBERG, William A.	Route 1, Box 41, Lake Stevens	39	D
GREIVE, R. R. Bob	5116 S.W. Hudson, Seattle	34	D
GUESS, Sam C.	W. 408 33rd Ave., Spokane	6	R
HALLAUER, Wilbur G.	P. O. Box 70, Oroville	1	D
HANNA, H. B. "Jerry"	1130 Springwater Ave., Wenatchee	12	D
HENRY, Al	Rio Vista, White Salmon	17	D
HERRMANN, Karl V.	Trentwood	4	D
HESS, Andy	1414 S.W. 158th, Seattle	31	D
KEEFE, James Edward	412 W. Glass Ave., Spokane	3	D
KNOBLAUCH, Reuben A.	P. O. Box 363, Sumner	25	D
KUPKA, George W.	801 So. G St., Tacoma	27	D
LENNART, Ernest W.	Route 1, Everson	41	R
MARDESICH, August P.	4712 Marmont Drive., Everett	38	D
MCCORMACK, Mike	2010 Everest, Richland	16	D
McGUTCHEON, John T.	P. O. Box 387, Steilacoom	29	D
McMILLAN, David E.	Route 3, Colville	2	D
MORGAN, Frances Haddon	948 Lower Oyster Bay Rd., Bremerton	23	D
MORIARTY, Charles P., Jr.	100 Highland Drive, Seattle	36	R
NEILL, Marshall A.	414 Dexter, Pullman	9	R
PETERSON, Ted G.	2346 N. W. Blue Ridge Drive, Seattle	44	R
PETRICH, John A.	815 No. "G" St., Tacoma	26	D
RASMUSSEN, A. L.	4031 Pacific Ave., Tacoma	28	D
RAUGUST, W. C.	Odeessa	8	R
RICKDALL, Ralph L.	P. O. Box 317, Burlington	40	R
RILEY, Edward F.	616 4th W., Seattle	35	D
RYDER, John W.	6811 55th N. E., Seattle	46	R
SANDISON, Gordon	122 E. 5th St., Port Angeles	24	D
STENDER, John H.	27420 Military Road, Auburn	30	R
TALLEY, Donald L.	312 Allen St., Kelso	18	D
THOMPSON, Albert C., Jr.	2300 108th S. E., Bellevue	48	R
WASHINGTON, Nat	42 "C" Street N.W., Ephrata	13	D
WILLIAMS, Walter B.	3871 45th N. E., Seattle	43	R
WOODALL, Perry B.	Route 1, Toppenish	15	R

# Senators

*new card*  
**ATWOOD, Frank** (Republican) Senator from the 42nd District of Whatcom County will be serving his first term. Born in 1926 in Springfield, Mass. Graduate of Washington State University with a B.A. in Political Science and University of Washington with an LL.B. He is an attorney. Served in the Army in World War II, Captain Army Reserves. Member Junior Chamber of Commerce, Lions, Elks and Reserve Officers Association. He and his wife Marie have two children



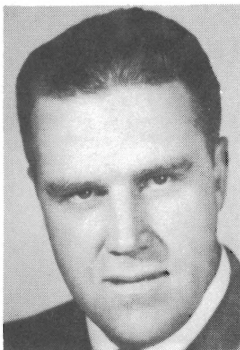
**BAILEY, Robert C. "Bob"** (Democrat) Senator from the 19th District of Pacific, Part of Grays Harbor County. Served in the House three terms and serving his fourth session in the Senate. Born in Raymond in 1918. Graduated from high school and is a printer by trade. In Navy during World War II. Member Eagles, 40 et 8, American Legion, VFW, Military Order of Cooties, Masons, Boy Scout District Committee. He and his wife Lee have a son.

*new card*  
**CHARETTE, Robert L. "Bob"** (Democrat) Senator from the 21st District of Grays Harbor County. Serving his first term. Born 1923 in Aberdeen. Graduate of Grays Harbor Junior College and University of Washington Law School. Partner firm of Schumacher & Charette. Purple heart veteran World War II having served in the Army Infantry. Member Phi Kappa Psi, Phi Delta Phi Legal, Grays Harbor and American Bar Association, Eagles, Elks and VFW. He and his wife Betty have three children.

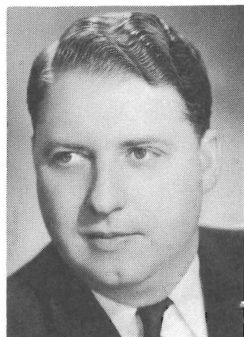


**CHYTIL, Joe** (Republican) Senator from the 20th District of Lewis County. Served in the House four terms and will be serving his second session in the Senate. Born in Aberdeen in 1909. A graduate of high school and business college. Has been in radio broadcasting business since 1937. He is a member of the Elks and Eagles. He and his wife Jane have two children.

# Senators



**CONNOR, Frank** (Democrat) Senator from the 33rd District of King County. Served three terms in House of Representatives and will be serving his fourth session in the Senate. Born in Seattle in 1916. Graduate of O'Dea High School and is a Deputy Assessor of King County. Member of the Knights of Columbus. He is married and his wife's name is Arlene.



**COONEY, John L.** (Democrat) Senator from the 5th District of Spokane County. Served two terms in the House and will be serving his fourth session in the Senate. Born in Condon, Oregon in 1915. Graduate of Gonzaga Law School and is a practicing lawyer. Member Elks, Grange and Knights of Columbus. He and his wife Marguerite have four children.



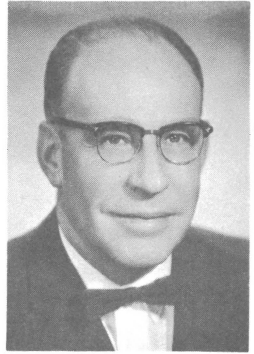
**COWEN, Dr. David C.** (Democrat) Senator from the 7th District of Spokane County. Senior member of the Legislature and senior member of all powerful Rules Committee. He served four terms in the House, 1935-41 and has been in Senate since 1943. Born in Portland, Oregon in 1900. Graduate of University of Oregon and is a dentist. Pres. of Spokane Planning Comm., Dir. of United Crusades, Muscular Dystrophy and Retarded Childrens Comm. and on Public Library Comm. Member Masons, Shrine and Elks. Unmarried.



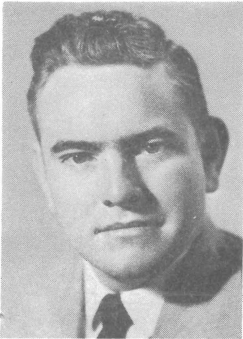
**DeGARMO, V. F. "Vic"** (Democrat) Senator from the 22nd District of Thurston County. Will be serving his fourth term in the Senate. Born in Staples, Minnesota in 1914. High school graduate and is associated with the Olympia Brewing Company. He served in the Marines. Member Eagles, Moose, American Legion and VFW. He has one son.

# Senators

**DONOHUE, Dewey C.** (Democrat) Senator from the 10th District comprising Asotin, Columbia and Garfield Counties. Served six terms in the House and will be serving his second session in the Senate. He was born in Dayton in 1897. Attended high school and business college. He is engaged in farming. Member Elks, Masons, and the Grange. He and his wife Marguerite have five children.



**DORE, Fred H.** (Democrat) Senator from the 37th District of King County. Served in the House in 1953, 55, 57, 59 appointed to Senate and served in 1959 extra session and elected in 1960. Served in the Senate 1961 and 1961 Extra Session. Born in Seattle in 1925. Attended Seattle University and graduated from Georgetown Foreign Service School and Georgetown Law School. He is an attorney. He and his wife Mary have three children.



**DURKAN, Martin J.** (Democrat) Senator from the 47th District of King County. Member of the House in 1957 and will be serving his second term in the Senate. Born in Great Falls, Montana in 1924. Graduate of the University of Washington Law School and he is an attorney. Veteran World War II. He and his wife Lorraine have five children.

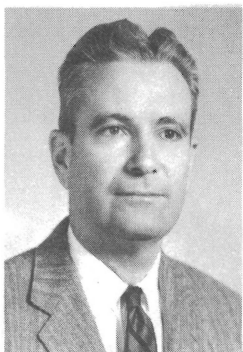


**ENGLAND, Jack** (Republican) Senator from the 32nd District of King County. Served one term in the House and will be serving first term in the Senate. Born in Mount Vernon in 1927. Graduated from the University of Washington with B.A. and LL.B. degrees. He is an attorney and in Radio Broadcasting. Served in Air Corps during World War II. Member Delta Chi, Delta Theta Phi Legal Fraternity, Lions and Elks. He and his wife Sharon have two children.



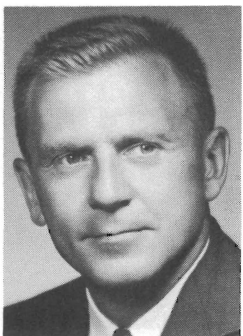


# Senators



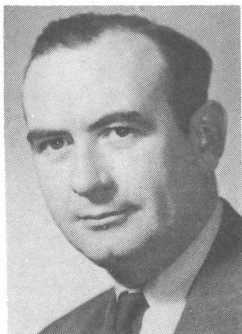
**FOLEY, Frank W.** (Democrat) Senator from the 49th District of Clark County. Served in the Senate 1957, 59, 59 Ex., 61, 61 Ex. so will be serving his sixth session. Born in Spokane in 1913. Graduate of Washington State University and Gonzaga Law School. An Attorney. A Lt. Colonel in Army during World War II. Member Kappa Sigma fraternity and the Elks Club. Married and his wife's name is Betty.

**FOSTER, F. Stuart** (Republican) Senator from the 14th District of Yakima County. Served in the House in 1941, 43, 45, 47 and 49. Senate in 1951 and 1961. Born in Rossville, Georgia in 1907. Graduate of the University of Washington and Willamette University Law School and is an attorney. Member Elks, Eagles and Optimist International. He and his wife Naomi have three children.



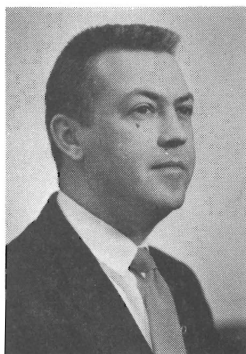
**FREISE, Herbert H.** (Republican) Senator from the 11th District of Walla Walla County will be serving his second term. Born in Palatine, Illinois in 1917. Graduate of Valparaiso University, Valparaiso, Ind. with A.B. and LL.B. Degrees and is a lawyer. In Navy during World War II. Member Phi Delta Theta Fraternity. He and his wife Vera have three children.

**GALLAGHER, Michael J.** (Democrat) Senator from the 45th District of King County. Served in the House, 1943, 44, 49 and 50 and in the Senate, 1945, 51, 53, 55, 57, 59 and 61. He was born in Indianapolis, Indiana in 1911. Attended business college and is engaged in real estate business. He is married and his wife's name is Dorothy.



# Senators

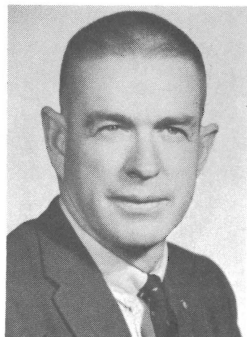
**GISSBERG, William A. (Democrat)** Senator from the 39th District of Island and Snohomish Counties. Will be serving his sixth term. Born in Everett in 1922. Graduate of the University of Washington Law School and is an attorney. In the Marines during World War II. Member Elks and Moose Lodges. He and his wife Helen have four children.



**GREIVE, R. R. (Bob) (Democrat)** Senator from the 34th District of King County will be serving his 9th session. Born in West Seattle in 1919. Graduate of the Miami, Florida School of Law and is an attorney. Attended the University of Washington and Seattle University. Served in Coast Guard during World War II. Member Lions, Eagles and the American Legion. He and his wife Barbara Ann have four children.



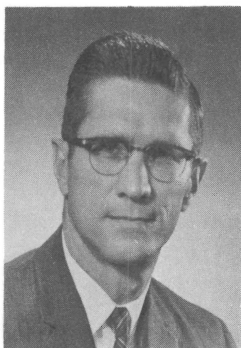
**GUESS, Sam C. (Republican)** Senator from the 6th District of Spokane County. Serving his first term. Born in Greenwood, Mississippi in 1909. He graduated from the University of Mississippi with B.S. in Civil Engineering and served in that capacity in the Army as a Major in World War II. Member of Sigma Nu fraternity. He and his wife Dorothy have two children.



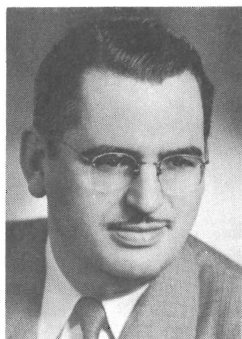
**HALLAUER, WILBUR G. (Democrat)** Senator from the 1st Legislative District of Douglas and Okanogan Counties. He served four terms in the House and will be serving his second term in the Senate. Born in Webster, New York in 1914. Graduate of the University of Washington with a B.A. Degree in Labor Economics he is manager of a fruit processing company. He and his wife Rose Marie have two daughters.



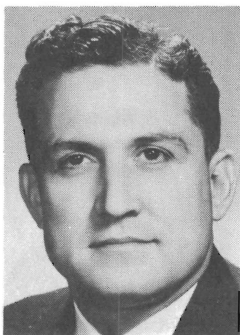
# Senators



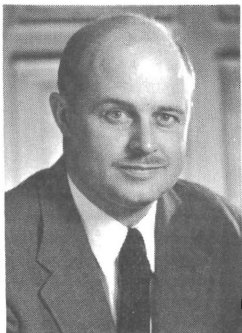
**HANNA, H. B. (Jerry)** (Democrat) Senator from the 12th District of Chelan County. Served in the House in 1955 and Senate in 1957, 59 and 61. Born in Wenatchee in 1921. Graduate of Valparaiso University Law School in Indiana and is a practicing attorney. Served in the Army during World War II. Member of the Elks, Eagles and American Legion. He and his wife Grace have two children.



**HENRY, Al** (Democrat) Senator from the 17th District of Klickitat and Skamania, part of Clark County. Served in the House 1941, 45, 51, 55 and Senate, 1957, 59 and 61. Born 1911 in Ness County Kansas. He has a business education and is a telephone company executive. Veteran of World War II. He and his wife Representative Mildred E. Henry have two daughters.



**HERRMANN, Karl V.** (Democrat) Senator from the 4th District of Spokane County will be serving his fourth term in the Senate. Born in Granite Falls in 1915. Attended the University of Puget Sound, Washington State University and a graduate of Gonzaga Law School and is a lawyer. He and his wife Beatrice have four children.



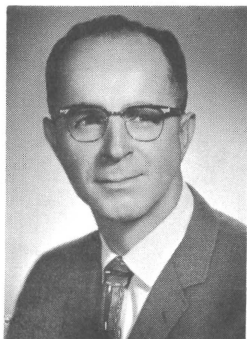
**HESS, Andy** (Democrat) Senator from the 31st Dist. of King Co. Served in the House three terms. In the Senate since 1957. Born, Abilene, Kansas in 1923. Graduate of University of Wash. with graduate work in economics. Real estate appraiser, broker, industrial property management consultant, manager, King Co. Airport, on Board of Directors of General Security Life Company. Navy, World War II. Member Elks, Grange and VFW. He and his wife Dorothy have three children.

# Senators

**KEEFE, James Edward** (Democrat) Senator from the third district of Spokane County. Will be serving his fourth term. Born in New York City in 1908. Graduate of Gonzaga High School. Now employed as a sales manager. Belongs to the Elks Club. He and his wife Eileen have two sons.



**KNOBLAUCH, Reuben A.** (Democrat) Senator from the 25th District of Pierce County. Served in the House 3 sessions and in the Senate since 1953. Born in Sumner in 1914. Graduated from the Sumner High School. A farmer. Member to the Elks, Grange, American Legion, VFW and Kiwanis Club. Served in World War II. He is unmarried.



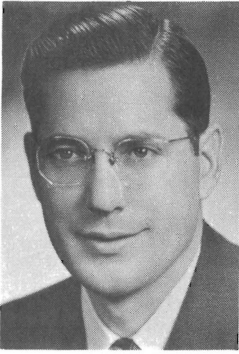
**KUPKA, George** (Democrat) Senator from the 27th District of Pierce County. Served in the House three terms and will be serving his fourth session in the Senate. Born in South Prairie, Washington in 1912. Graduated from high school and is in jewelery business. In the Navy during World War II. Member Elks, Eagles and Tacoma Civic Club. Unmarried.



**LENNART, Ernest W.** (Republican) Senator from the 41st District of Whatcom County. Served in the House three terms and will be serving his third term in the Senate. Born in 1893 in Sweden. He attended college and is engaged in farming and cold storage and seed business. Veteran of World War I. Member Masons, Grange, Farm Bureau, Legion and VFW. He and his wife Edith have five children.

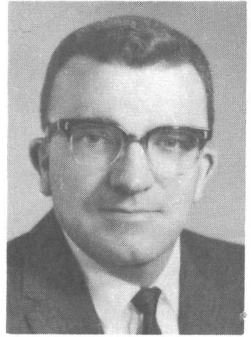


# Senators



**MARDESICH, August P.** (Democrat) Senator from the 38th District of Island and Snohomish Counties. Served in the House, 1950, 51, 53, 55, 57, 59 and 61. Will be serving his first term in the Senate. Majority Floor Leader in 1955, 57 and 59. Born in 1920 in San Pedro, Calif. Graduate of University of Washington Law School and is an attorney and engaged in commercial fisheries. Veteran of World War II. Member Elks, VFW and American Legion. He and his wife Rosemary have five children.

**MCCORMACK, Mike** (Democrat) Senator from the 16th District of Benton and Franklin Counties. Served in the House two terms and first term in the Senate. Born in Ohio in 1921. Graduate of Washington State University with Masters Degree in Chemistry. He is a Chemist at Hanford Atomic Products Operation. Member Masons, Shrine, Sigma Chi Fraternity, American Legion, Grange and American Chemical Society. He and his wife Margaret have three sons.



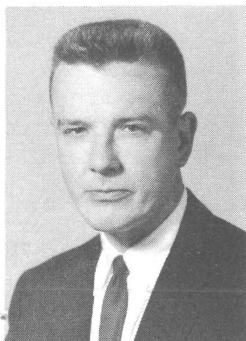
**MCCUTCHEON, John T.** (Democrat) Senator from the 29th District of Pierce County. Served one term in the House in 1941. Senate in 1943, 44, 45, 47, 59 and 1961. Born in 1892 in Tacoma. Graduate of Indiana University Law School and attended the University of Washington. Retired in 1960 after practicing law in Tacoma thirty four years. Former Mayor of Steilacoom. Member Eagles, Grange and Masons. He and his wife Tina have three children.

**McMILLAN, David E.** (Democrat) Senator from the 2nd District of Pend Oreille and Stevens Counties. Senate, 1935, 37, 39, 41, 59, 61 will be serving his seventh session. Born in Colville in 1897. Attended University of Washington for three years. Farmer and stock raiser. Served in World War I, 2nd Lt., Army Reserves. Member Delta Chi fraternity, Masons, Elks and the American Legion. He and his wife Mary have two daughters.



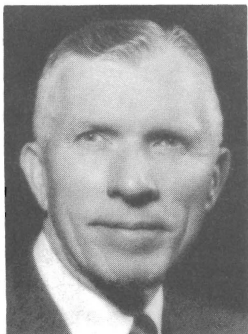
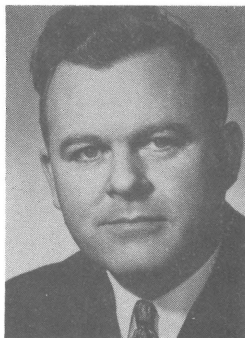
# Senators

**MORGAN, Frances Haddon** (Democrat) Senator from the 23rd District Kitsap County. Served in House, 1959 and is serving her second session in the Senate. Following in footsteps of her mother, Lulu D. Haddon, who served in the House and Senate. Has a business college education. Born in Bremerton and has owned and operated a welcoming service there for 10 years. On Governor's Council for Children & Youth in 1957. Member Ladies of Elks, PTA, Soroptimists and Washington Assn. for Retarded Children. She and her husband Osmore have two grown daughters.



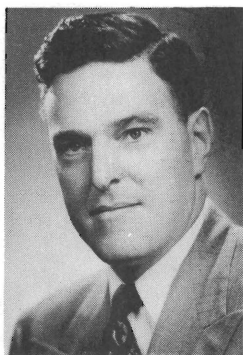
**MORIARTY, Charles P., Jr.**, (Republican) Senator from the 36th District of King Co. Served in the House-1957-59 and appointed in June, 1959, to fill vacancy caused by death of Victor Zednick, elected to unexpired term in 1960. Serving his second session. Born, 1927 in Seattle. Graduate of University of Washington Law School. An attorney. Served in Army Judge Advocate General's Corps, 1952-53. Member Elks, Knights of Columbus and American Legion. He is unmarried.

**NEILL, Marshall A.** (Republican) Senator from the 9th District of Whitman County. Served in House, 1949-50-51-53-55 and will be serving his fourth session in the Senate. Born in Pullman in 1914. Graduate of Washington State University and University of Idaho Law School and is a practicing lawyer. Served in Navy during World War II. Member Elks and Masonic Order. He and his wife Marion have three children.



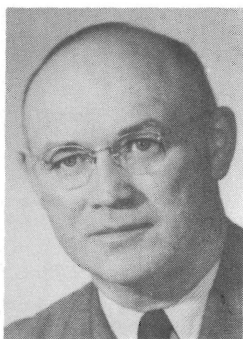
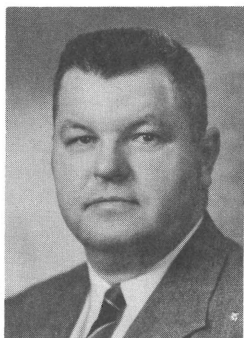
**PETERSON, Ted G.** (Republican) Senator from the 44th District of King County. Previously served in the Senate in 1955 and 1957. Born in Seattle in 1904. He attended the University of Washington and is now President of a wholesale beauty equipment and supplies company. Served four years in Washington National Guard. Member Masons and Nile Shrine also Past Director Lions International. He and his wife Ruth have two children.

# Senators



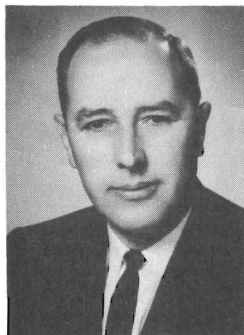
**PETRICH, John A.** (Democrat) Senator from the 26th District of Pierce County. Served one term in the House and will be serving his second term in the Senate. Born in 1919 in Tacoma. Attended University of Washington and is a graduate of Santa Clara University and Georgetown University Law School, is an attorney. In Navy during World War II. Member of the Elks. He and his wife Margaret have six children.

**RASMUSSEN, A. L.** (Democrat) Senator from the 28th District of Pierce County. Served eight terms in the House and was elected to the Senate in 1960, serving his second session. Born in Everett in 1909. Attended the public schools of Tacoma and is employed as a railroad machinist. He and his wife Eleanor have four children.



**RAUGUST, W. C.** (Republican) Senator from the 8th District of Adams, Ferry and Lincoln Counties. Served in the House four terms and in the Senate since 1950. Born in Russia in 1895 of Dutch and German parentage. Business education. Has farming interests, is president and director of several companies and manager of a farmer's cooperative dealing in grain and farm implements. Served in the Navy in World War I. Member American Legion and Lions Club. He and his wife Reca have five children.

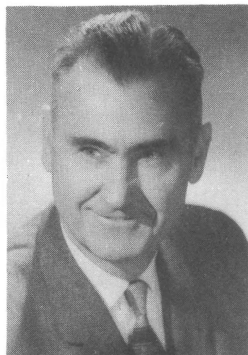
**RICKDALL, Ralph L.** (Republican) Senator from the 40th District of San Juan and Skagit Counties. Served 3 terms in the House will be serving first term in Senate. Born in Burlington in 1911. Business College, also attended University of Wash. and graduated from George Washington University Law School. He is a businessman, has investments and farm. Member Elks, Eagles and Moose. He and his wife Vera have two children.



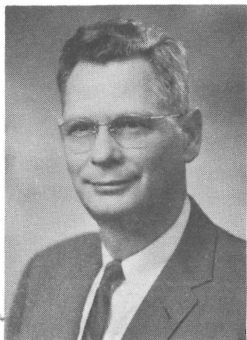


# Senators

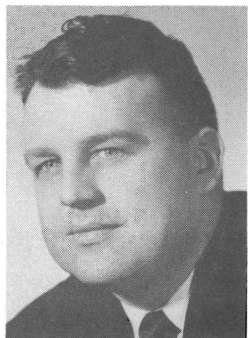
**RILEY, Edward F.** (Democrat) Senator from the 35th District of King County. Served in the House six terms. Serving third term in the Senate and will be President Pro Tem in 1963. Born in Seattle he attended the University of Washington and is a partner and director of a plumbing wholesale house and owner of a travel agency. In Army during World War I. Member Kiwanis, Knights of Columbus, American Legion and Theta Delta Chi. He and his wife Freda have four children.



**RYDER, John N.** (Republican) Senator from the 46th District of King County. Served in House, 1953 and will be serving fifth session in the Senate. Born, 1907 in Seattle. Attended University of Washington and a graduate of Rutgers University School of Banking. A Banker. Member Ravenna Lodge F. & A.M. He and his wife Margaret have three children.



**SANDISON, Gordon** (Democrat) Senator from the 24th District of Clallam, Jefferson and Mason Counties. House, 1949, 50, 51, 53, 55 and 57. Serving third session in the Senate. Born, 1919 in Auburn. College graduate and two years post graduate work. He is an insurance agent. In Marines during World War II. Member Elks, Eagles and VFW. He and his wife Muriel have five children.



**STENDER, John H.** (Republican) Senator from the 30th District of King County. Serving his first term. Was born in Montana in 1916. High school graduate and attended college. He is International Vice President of Boilermakers International Union. Member Eagles and F.A.M. Married and he and his wife Virginia have four children.

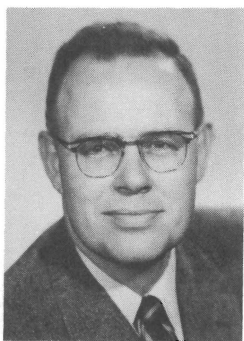
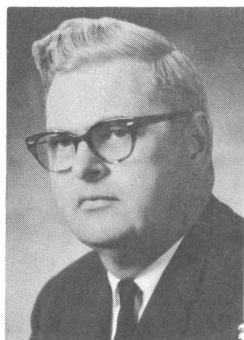


# Senators



**TALLEY, Donald L.** (Democrat) Senator from the 18th District of Cowlitz and Wahkiakum Counties. Serving his second term in the Senate. Born in Tacoma in 1918. High School graduate. Mayor of Kelso and employed by the Port of Longview. In the Navy during World War II. Member Masons, Shrine, American Legion, Elks and Moose. He has two sons.

**THOMPSON, Albert C., Jr.** (Republican) Senator from the 48th District of King County will be serving his third session. Born in Tacoma in 1919. Attended the University of Washington is self employed, owner and operator of drugstore. He and his wife Nancy have two children.



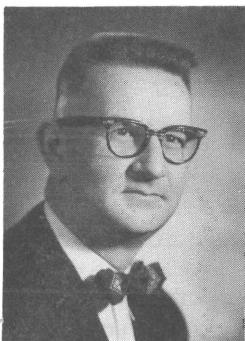
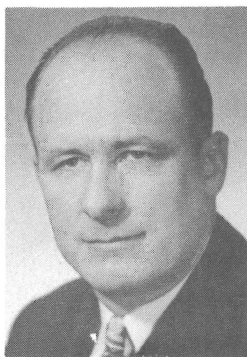
**WASHINGTON, Nat** (Democrat) Senator from the 13th District of Grant & Kittitas Counties served in the House, 1949, 50 and has been in the Senate since 1951. Born in Coulee City in 1914. Graduate of University of Washington Law School and is an attorney. Member Elks, Grange and Masons. He and his wife Wanda have two sons.

**WILLIAMS, Walter B.** (Republican) Senator from the 43rd District of King County served one term in the House and newly elected to the Senate. Born in Seattle in 1921. Graduate of the University of Washington and Harvard Law School he is a lawyer. In the Marines during World War II. He and his wife Marie have four children.



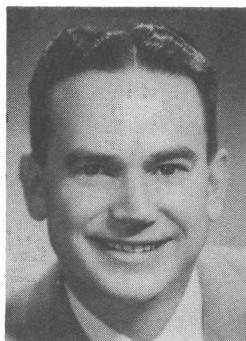
# Senators

**WOODALL, Perry B. (Republican)** Senator from the 15th District of Yakima County served six terms in the House and serving second term in the Senate. Floor Leader in House three terms and Minority floor Leader in Senate three sessions. Born, 1912 in Buena. Graduate of Yakima Valley Junior College and University of Washington Law School. Attorney and Counselor at Law. Navy during World War II. Member American Legion, Elks, Eagles, Farm Bureau and Grange. He and his wife Joye have one daughter.

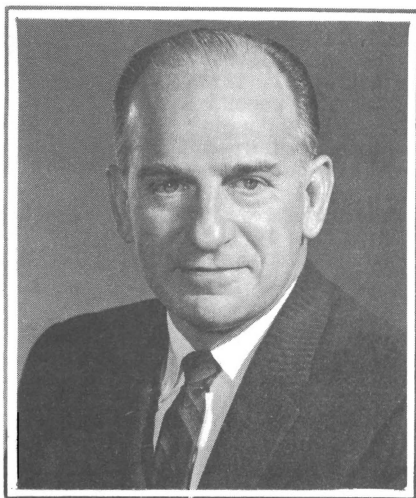


**BOWDEN, Ward (Democrat)** Secretary of the Senate is from the 39th District of Island and Snohomish Counties. Worked in the House during the sessions from 1935 through the session of 1955. He served as Assistant Chief Clerk in 1941-43-51 and 1955. Will be serving his fourth session as Secretary of the Senate. Born in Everett in 1912. Graduate of high school he is now a newspaper publisher. Member Elks, Eagles and the Kiwanis Club. He and his wife Doris Anne have seven children.

**JOHNSON, Charlie (Democrat)** Sergeant-at-Arms of the Senate is from the 22nd District of Thurston County. Will be serving his fourth session. Sergeant-at-Arms of the House in 1955 and member of the House in 1951. Born in Elko, Wyoming in 1911. Graduate of high school he is now a business broker. Member of the Eagles, BPOE and W.A.C. He and his wife Lenore have four children.



# Senators



LIEUTENANT GOVERNOR

JOHN A. CHERBERG (Democrat) from the 36th District of King County. Elected Lieutenant Governor in 1956 and re-elected in 1960. Lieutenant Governor Cherberg has served as presiding officer (President) of the Senate since 1957 and as Chairman of the Senate Rules Committee. He was born in Pensacola, Florida in 1910. In 1933 he received his B.B.A. degree in Economics and Marketing & Advertising and in 1934 a Life Teaching Diploma from the University of Washington, College of Education. A former teacher and athletic coach at Cleveland and Queen Anne High Schools and the University of Washington, all of Seattle. At present he is a television executive. Member Elks, Eagles, Moose and Sigma Nu Fraternity. He and his wife Betty have three children.

# **THE HOUSE OF REPRESENTATIVES**

STATE OF WASHINGTON  
**ROSTER OF MEMBERS**  
**House of Representatives**

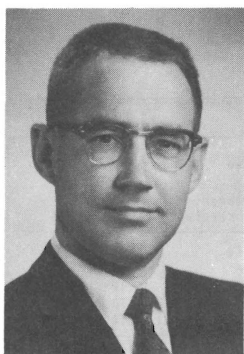
NAME	ADDRESS	DIST. NO.	POLITICAL PARTY
ACKLEY, Norman B.	16923-A Maplewild, Seattle	31	D
ADAMS, Alfred O.	W. 909 Helinda Lane, Spokane	6	R
AHLQUIST, H. Maurice	Hilltop Ranch, Touchet	11	R
ANDERSEN, James A.	3008 98th N. E., Bellevue	48	R
ANDERSON, Eric O.	627 Grand Ave., Hoquiam	21	D
BACKSTROM, Henry	Arlington	39	D
BECK, C. W. "Red"	Route 5, Box 15, Port Orchard	23	D
BEIERLEIN, W. J. (Joe)	1346 East Main, Auburn	30	D
BERENTSON, Duane	615 So. Anacortes St., Burlington	40	R
BERGH, Arnie	822 N. W. 107th, Seattle	44	D
BIGLEY, John	26903 148th S. E. Kent	30	D
BOZARTH, Horace W.	Mansfield	1	D
BRACHTENBACH, Robert F.	Route 2, Box 727, Selah	14	R
BRAUN, Eric D.	225 Cottage Ave., Cashmere	12	D
BROUILLET, Frank Buster	619 7th Ave. S.W., Puyallup	25	D
BURTCH, Jack L.	2623 Bench Drive, Aberdeen	21	D
CAMPBELL, Keith H.	W. 2204 Rockwell Ave., Spokane	5	D
CANFIELD, Damon R.	Route 1, Granger	15	R
CLARK, Cecil C.	Route 2, Wapato	15	R
CHATALAS, Wm. (Bill)	2802 33rd South, Seattle	33	D
COMFORT, Pat	3518 No. Adams, Tacoma	26	R
CONNER, Paul	Route 1, Box 60, Port Angeles	24	D
COPELAND, Tom	Route 3, Walla Walla	11	R
DAY, Wm. S. (Bill)	S. 3004 Cherry Lane, Spokane	4	D
DeJARNATT, Arlie U.	1215 23rd Ave., Longview	18	D
DOOTSON, Jack	3601 Rockefeller Ave., Everett	38	D
EARLEY, Robert G.	4908 Harbor View Dr., Tacoma	27	R
EBERLE, Robert D.	3443 49th Ave. S.W., Seattle	34	R
ELDRIDGE, Donald "Don"	1535 Kincaid St., Mt. Vernon	40	R
EVANS, Daniel J.	2015 43rd E., Seattle	43	R
FLANAGAN, S. E. "Sid"	Quincy	13	R
FOLSON, Morrill F.	1805 Harrison Ave., Centralia	20	R
GALLAGHER, P. J. "Jim"	125 So. 72nd St., Tacoma	28	D
GARRETT, Avery	450 Langston Road, Renton	47	D
GLEASON, Mrs. Marian C.	1503 So. 9th St., Tacoma	27	D
GOLDSWORTHY, Robert F.	Route 2, Rosalia	9	R
GORTON, Slade	1549 N. E. 102nd St., Seattle	46	R
GRANT, Gary	3741 136th S.E., Bellevue	47	D
HADLEY, H. D. "Herb"	1324 24th Ave., Longview	18	R
HARRIS, Edward F.	S. 1723 Maple, Spokane	7	R
HAUSSLER, Joe D.	R.F.D. 2, Omak	1	D
HAWLEY, Dwight S.	3310 N.W. 80th, Seattle	44	R
HENRY, Mildred E.	Rio Vista, White Salmon	17	D
HERR, Gordon	10617 21st S.W., Seattle	31	D
HOOD, Jack C.	Route 3, Ferndale	41	R
HUNTLEY, Elmer C.	Thornton	9	R
HURLEY, Mrs. Joseph E.	730 E. Boone, Spokane	3	D
JOHNSTON, Elmer E.	714 W. 14th Ave., Spokane	6	R
JOLLY, Dan	353 East Borah, Connell	16	D
JUELING, Helmut L.	215 Contra Costa, Fircrest, Tacoma	29	R

STATE OF WASHINGTON  
**ROSTER OF MEMBERS**  
STATE HOUSE OF REPRESENTATIVES—Continued

NAME	ADDRESS	DIST. NO.	POLITICAL PARTY
KING, Chet	432 7th Street, Raymond	19	D
KINK, Dick J.	1124 15th St., Bellingham	42	D
KIRK, Mrs. Douglas (Gladys)	1236 Bigelow N., Seattle	36	R
KLEIN, William C.	203 N. Morrison Road, Vancouver	49	D
LELAND, Alfred E.	8326 N. E. 110th Place, Kirkland	48	R
LEWIS, Harry B.	Route 4, Box 532, Olympia	22	R
LIND, Charles E.	608 16th St., Bellingham	42	R
LITCHMAN, Mark	13706 2nd N. E., Seattle	45	D
LYBECKER, Gus	Arlington & 11th St., Pomeroy	10	R
LYNCH, Marjorie	802 Pickens Road, Yakima	14	R
MAHAFFEY, Audley F.	5241 16th N. E., Seattle	46	R
MAST, Fred R.	1017 Minor, Seattle	35	R
MAY, William J. S.	W. 711 Waverly Place, Spokane	3	D
McCAFFREE, Mary Ellen	5014 18th N. E., Seattle	32	R
McCORMICK, W. L. "Bill"	W. 3909 Lyons, Spokane	5	D
McDOUGALL, Bob	Route 2, Box 2001, Wenatchee	12	R
McELROY, Drennan	Ruby, Route 2, Usk	2	D
McFADDEN, Dr. James L.	1217 E. 2nd St., Port Angeles	24	D
METCALF, Jack	Box 192, Mukilteo	38	R
MILES, Don	Route 6, Box 143, Olympia	22	R
MOON, Charles	Route 2, Box 427-A, Snohomish	39	D
MOOS, Donald W.	Edwall	8	R
MORPHIS, Richard W.	3504 Riverview Drive, Spokane	7	R
MORRISSEY, Ed	16 South 12th Ave., Yakima	14	R
MUNDY, Roy	118 McCliff Road, Ephrata	13	D
NEWSCHWANDER, Charles E.	2140 Bridgeport Way, Tacoma	29	R
O'BRIEN, John L.	5041 Lake Wash. Blvd. S., Seattle	33	D
O'CONNELL, W. J.	509 So. 51st., Tacoma	28	D
ODELL, Mike E.	Rt. 3, Glenrose Prairie, Spokane	4	R
O'DONNELL, Ann T.	1815 E. Harrison, Seattle	37	D
OLSEN, Ray	521 W. Mercer Place, Seattle	35	D
PERRY, Robert A. (Bob)	1154 N. 92nd, Seattle	45	D
PRITCHARD, Joel M.	3233 29th W., Seattle	36	R
REESE, Walt	Box 153 (RFD), Kennewick	16	R
ROGERS, Jack H.	Star Rt. 1, Box 78, Bremerton	23	D
ROSENBERG, K. O.	Addy	2	D
SAVAGE, Charles R.	2011 King Street, Shelton	24	D
SAWYER, Leonard A. (Len)	703 4th St. S.E., Puyallup	25	D
SCHAEFER, Robert M.	6101 Highland Drive, Vancouver	49	D
SILER, Harry A.	Route 2, Randle	20	R
SMITH, Samuel J. (Sam)	1814 31st, Seattle	37	D
SWAYZE, Frances G.	509 No. Yakima, Tacoma	26	R
TAYLOR, Richard "Dick"	721 5th St., Mukilteo	38	D
UHLMAN, Wes C.	2315 N. 40th, Seattle	32	D
WANG, Arnold S.	1003 Callahan Drive, Bremerton	23	R
WEDEKIND, Max	3729 40th S.W., Seattle	34	D
WINTLER, Ella	800 E. 24th St., Vancouver	49	R
WITHERBEE, C. G.	16824 12th S.W., Seattle	31	D
YOUNG, William E.	2507 22nd Ave. E., Seattle	43	R

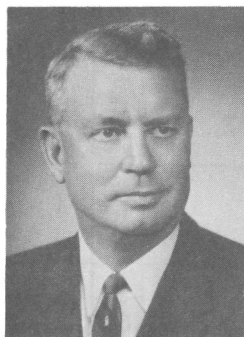


# Representatives



**ACKLEY, Norman B.** (Democrat) Representative from the 31st District of King County serving his third term. Chairman, Interim Committee on Urban Area Government. Born in 1920 in Vancouver. Graduate of University of Washington Law School and is a lawyer. Served in the Air Force 1942-46. He and his wife Corrine have one son.

**ADAMS, Dr. Alfred O.** (Republican) Representative from the 6th District of Spokane County. Will be serving his sixth term. Born in Paola, Kansas in 1897. Graduate of Washington University, St. Louis, Missouri with M. D. degree and is now retired from his practice as a physician and surgeon. Veteran of World War I. He has one son.



**AHLQUIST, H. Maurice** (Republican) Representative from the 11th District of Walla Walla County. Serving fourth term. Born in Denver in 1902. Graduate of Dartmouth College. Engaged in farming. Member Columbia Interstate Compact. Member Masons, Elks, Lambda Chi Alpha Fraternity, Farm Bureau and Grange. He and his wife Bobbie have two children.

**ANDERSEN, James A.** (Republican) Representative from the 48th District of King County serving his third term. Born, 1924 in Auburn. Graduated from the University of Washington Law School and is a practicing attorney. Combat infantryman, World War II. Belongs to various veterans and community organizations. He and his wife Billiette have two children.



# Representatives

**ANDERSON, Eric O.** (Democrat)  
Representative from the 21st District of Grays Harbor County. Serving his second term. Born in Greymouth, New Zealand in 1902. High School graduate. He is a logging engineer and purchasing agent. Member of the Grange, Masons and I.W.A. 2-3. He and his wife Ida May have two children.



**BACKSTROM, Henry** (Democrat) Representative from the 39th District of Island and Snohomish Counties. Serving his third term. Mayor of Arlington. Born in New Britain, Conn. in 1897. Graduate Olds College of Agriculture and attended Edson Institute. A Ford dealer and owner of a truck fabrication plant. Member Elks, Lions, Washington Athletic Club. and Chairman of Trustees of WSADA Insurance Association. He and his wife Elvira have three children.

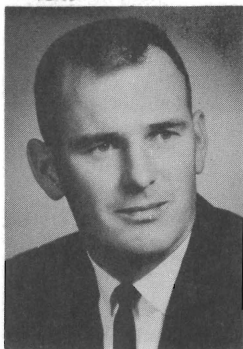
**BECK, Clifford W. (Red)** (Democrat) Representative from the 23rd District of Kitsap County. Serving his second term. Born 1907 in Bloomington, Indiana. Graduate of high school and attended Stanford University. Served in the Navy for 10 years. Worked as a naval civilian employee and is a retired naval ordnance engineer. Self employed as a property manager. Member Kiwanis, B.P.O. Elks and Fleet Reserve Association. His wife's name is Hope Grace.



**BEIERLEIN, W. J.** (Democrat) Representative from the 30th District of King County will be serving his thirteenth term. He was born in North Dakota in 1891. Former City Councilman of Auburn. In food and men's clothing business. He is married and his wife's name is Nellie.

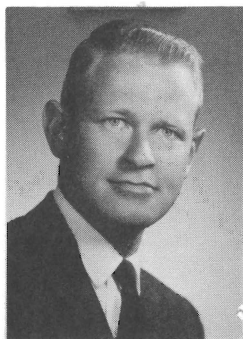
# Representatives

*new card*



**BERENTSON, Duane** (Republican) Representative from the 40th District of San Juan and Skagit Counties. Will be serving his first term. Born in Anacortes in 1928. Graduate of Pacific Lutheran University and has done graduate work at the University of Wash. Broker dealer in securities. U. S. Naval Air Reserve. Member Sigma Nu. He and his wife Joanne have five children.

**BERGH, Arnie** (Democrat) Representative from the 44th District of King County. Serving his second term in the House. Born in Seattle in 1931. Graduate of the University of Washington with B.A. Degree and he is now in real estate and insurance business. Served as a jet pilot for four years. He and his wife Shirley Jean have three children.



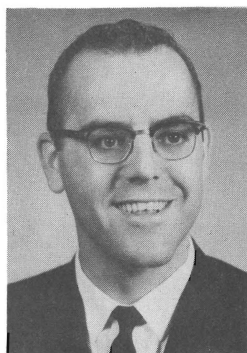
**BIGLEY, John** (Democrat) Representative from the 30th District of King County will be serving his fourth term. Born, 1900 in Streator, Illinois. Graduate University of Washington and also attended Washington State University and Central Wash. State College. Retired public school administrator and tree farmer. Member Elks, Masons and Grange. He and his wife Eleanor have three sons.

**BOZARTH, Horace W.** (Democrat) Representative from the 1st District of Douglas and Okanogan Counties. Serving his fifth term. Born in Fairfield, Wash. in 1894. Graduate from Gonzaga University with B.A. Degree. Engaged in farming he is a member and officer of the Washington State Grange also served two terms as a county commissioner of Douglas County. Member of the Eagles Lodge. He is married and his wife's name is Christine.



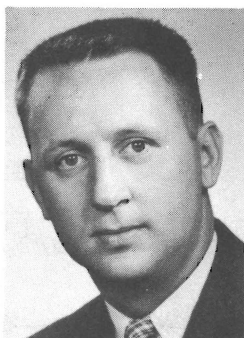
# Representatives

**BRACHTENBACH, Robert F.** (Republican) Representative from the 14th District of Yakima County. Serving his first term in the House. Born in Nebraska in 1931. Graduated from the University of Washington with B.S. and LL.B. degrees. He is a lawyer and was a member of the Selah School Board in 1960. Member of the Elks Club. He and his wife Nancy have five sons.



**BRAUN, Eric D.** (Democrat) Representative from the 12th District of Chelan County will be serving his fourth term. Born, 1910 in Norfolk, Nebraska. Graduate of a Mortuary College and is a funeral director. Mayor of Cashmere for 9 years. Member Masons, Shrine, Eagles and Rotarian. He and his wife Eunice have two children.

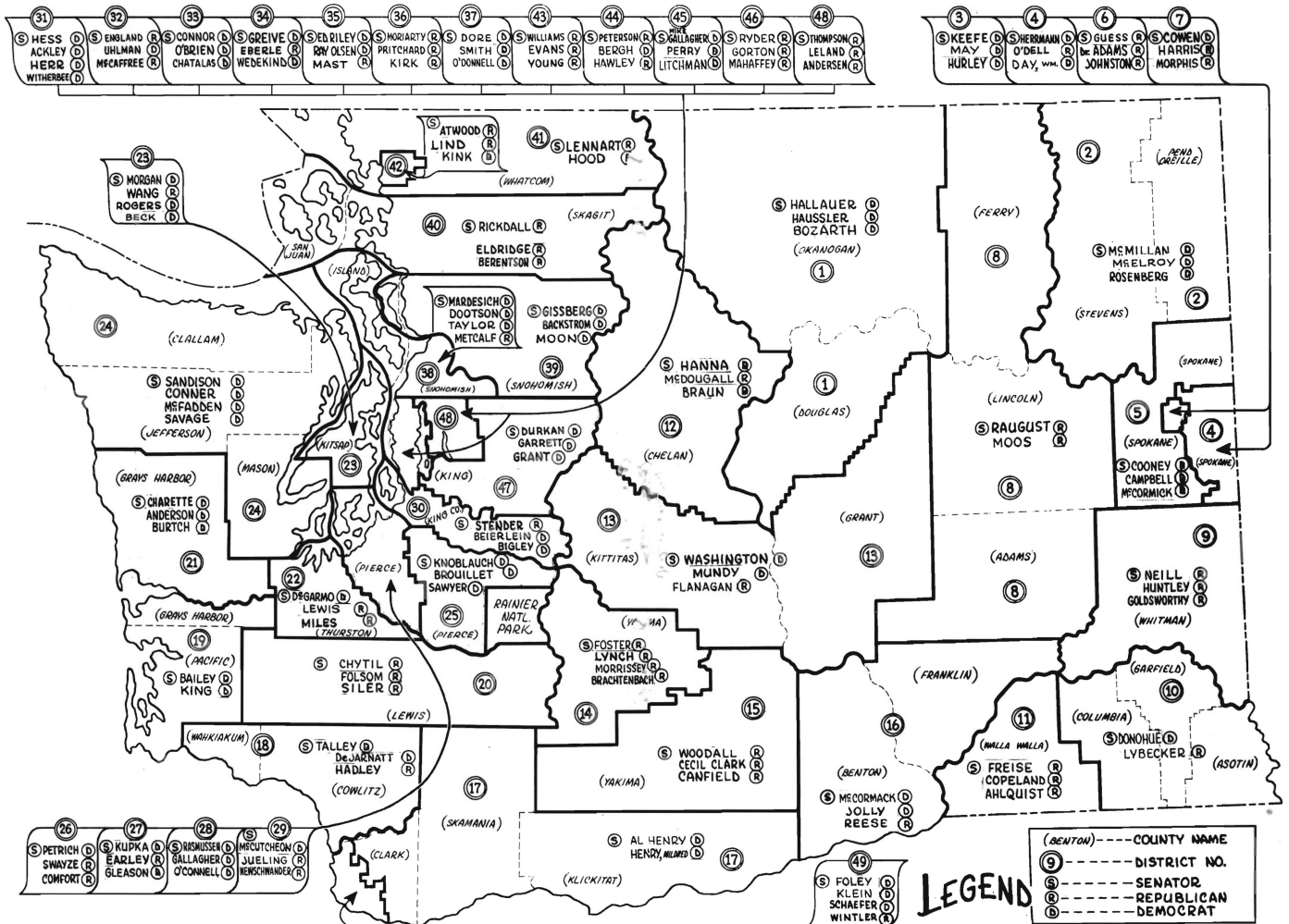
**BROUILLET, Frank Buster** (Democrat) Representative from the 25th District of Pierce County. Serving his fourth term. On Interim Committee on Education. Born in Puyallup in 1928. Graduate of University of Puget Sound with B.A. and M.A. degrees and attended the University of Montana. He is a teacher. Served in U. S. Army Counter Intelligence Corps. Member Elks, Grange, Masons and Sigma Chi fraternity. He and his wife Marge have a son.



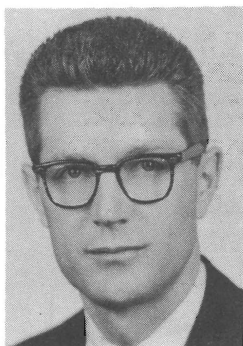
**BURTCH, Jack L.** (Democrat) Representative from the 21st District of Grays Harbor County. Serving his second term. Born in Portland in 1926. Graduate of Whitman College with B.A. in Political Science and from the University of Washington Law School. Now a practicing attorney. In the Navy during World War II. He and his wife Edna have three children.



# STATE OF WASHINGTON ~ 1963 LEGISLATIVE ROSTER

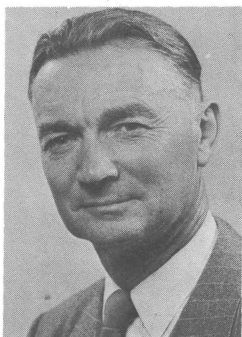
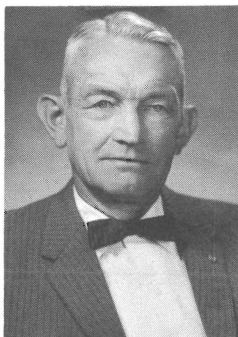


# Representatives



**CAMPBELL, Keith H.** (Democrat) Representative from the 5th District of Spokane County will be serving his fourth term. Born, Harlowton, Montana in 1920. Graduate of University of Washington and Gonzaga Law School and is a practicing attorney. Served in the Air Force in World War II and the Korean Conflict and is in the Air Judge Advocate Reserve. Member of the Moose, VFW, State Bar Assn., YMCA and School PTA's. He and his wife Dorothy have four children.

**CANFIELD, Damon R.** (Republican) Representative from the 15th District of Yakima County. Will be serving his sixth term. Born in Siloam Springs, Arkansas in 1897. Attended University of Washington and graduated from Washington State University. Engaged in fruit and cattle ranching. Served as Ensign, World War I. Member American Legion, Rotary, Masons, Farm Bureau, Grange and Methodist Church. He and his wife Marie have two children.



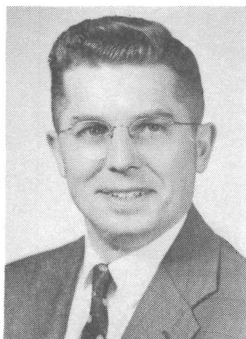
**CLARK, Cecil C.** (Republican) Representative from the 15th District of Yakima County serving his seventh term. Born in 1896 in Yakima. Attended the University of Washington one year, he is a retired fruit grower and farmer. Member the Grange, Farm Bureau, Masons, Shrine, Rotary, member Washington Cannery Cooperative Executive Board and a Presbyterian. He and his wife Catherine have three sons.

**CHATALAS, William "Bill"** (Democrat) Representative from the 33rd District of King County will be serving his second term. Vice Chairman Liquor Control-1961. He is of Greek Origin born in Constantinople, Turkey in 1907. High school graduate and attended U. W. ext. school. Is a public relations and sales supervisor. Member of Order of Ahepa, Rainier Business Men's Club, Chairman of the Legislative Committee Mt. Baker Improvement Club and a Past State Director Greek War Relief Association. He and his wife Goldie have three children.



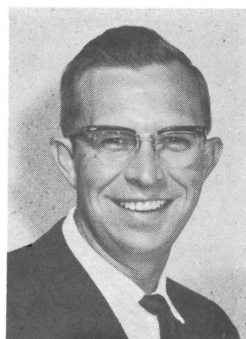
# Representatives

**COMFORT, Pat** (Republican) Representative from the 26th District of Pierce County will be serving his second term. Born in Tacoma in 1930. Has B.A. from Gonzaga and received his LL.B. Degree from New York University School of Law. He is an attorney. Served two years in the Army. Member Lions, Alpha Sigma Nu, B.P.O.E., and YMBC. He and his wife Shirley have three children.



**CONNER, Paul H.** (Democrat) Representative from the 24th District of Clallam, Jefferson & Mason Counties appointed in 1957 to the Senate. He is serving his third term in the House. Born in Port Angeles in 1925. Attended Western Washington College, University of Washington, business college. He is a technical assistant. Member Elks, Eagles, Jr. Chamber of Commerce and Grange. He and his wife Thelma have four children.

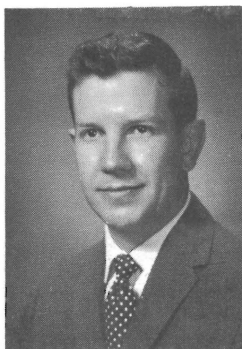
**COPELAND, Thomas L.** (Republican) Representative from the 11th District of Walla Walla County. Serving his fourth term. Born in Pendleton, Oregon in 1924. Attended Kemper Military School and Washington State University. Farmer raising wheat, green peas and livestock. Army Captain in World War II. Member Elks, American Legion, Masons, Farm Bureau, Chamber of Commerce and Sigma Nu Fraternity. He and his wife Dolly have three children.



**DAY, William S.** (Democrat) Representative from the 4th District of Spokane County will be serving his third term. Born in Rockford, Illinois in 1923. Graduate of Palmer College of Chiropractic, Davenport, Iowa and is a Chiropractor. In Army during World War II. Member Kiwanis and Veterans of Foreign Wars. He and his wife Donna Lee have five children.

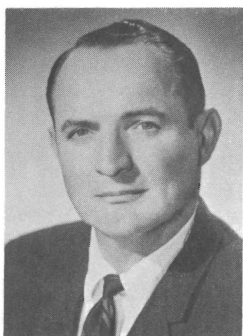


# Representatives



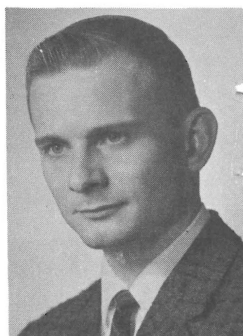
**DeJARNATT, Arlie U.** (Democrat) Representative from the 18th District of Cowlitz & Wahkiakum Counties. Serving his second term. Born in 1923 in Glezen, Indiana. Has A.B. degree from Cornell College and Master's from Colorado State College. High school teacher and coach. In Marines during World War II. He and his wife Donna have five children.

**DOOTSON, Jack** (Democrat) Representative from the 38th District of Island and Snohomish Counties. In the House in 1941, 51 and will be serving third term. Born in Pasadena, Calif. in 1914. Graduate of George Washington University with LL.B. and U. of W. with A.B. in Economics and Business. Did Graduate Work at George Washington, Purdue and Mexico City College. Engineer for Great Northern. Served as Naval Aviator 1942-1947 left as a Lt. Commander. He is unmarried.



**EARLEY, Robert G.** (Republican) Representative from the 27th District of Pierce County. He will be serving his first term in the House. Born in Enumclaw in 1921. He is a building contractor. During World War II he was in the Navy serving in the Seabees. Member of the Elks Lodge and Veterans of Foreign Wars. He and his wife Barbara have three children.

**EBERLE, Robert D.** (Republican) Representative from the 34th District of King County will be serving his first term. Was born in Saint Joseph, Missouri in 1934. Graduate of the University of Missouri, School of Mines and Metallurgy with BSME and MS in Engineering from University of Alabama and is a professional engineer. Member Pi Tau Sigma (Honorary Mechanical Engineering Society). He and his wife Kay have a daughter.

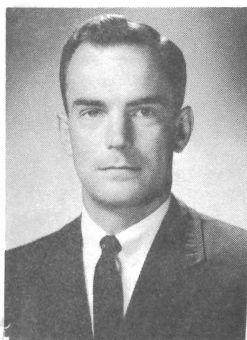


# Representatives

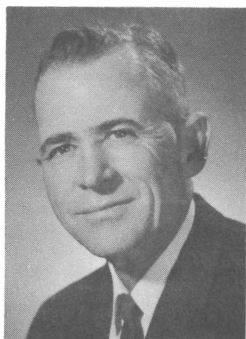
**ELDRIDGE, Don** (Republican) Representative from 40th Dist. of San Juan & Skagit Counties serving 6th term. Born, 1919 in Mt. Vernon. Graduate Western Wash. College of Education, on Board of Trustees 10 years; Vice-Pres. Interim Committee on Education; active in Boy Scouts; Field Advisor of Small Business Admin. 10 yrs; member C of C; YMCA; Rotary and Past Pres. Jr. C of C, U.S. Partner in stationery store. Air Force, World War II. He and his wife Harriett have four children.



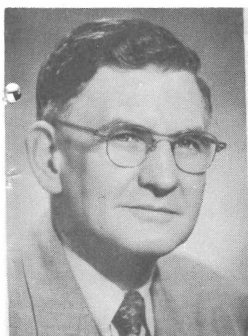
**EVANS, Daniel J.** (Republican) Representative from the 43rd District of King County. Serving his fourth term. Born in 1925 in Seattle. Has a Masters Degree from University of Wash. in Science (Civil Engineering) and a partner in a civil & structural engineering firm. Was a Lieutenant in the U. S. Navy. Member Municipal League, on Exec. Board, Chief Seattle Council Boy Scouts, Exec. Board of the Seattle King Co. Safety Council and Vice Chairman Wash. State Heart Fund. He and his wife Nancy have a son.



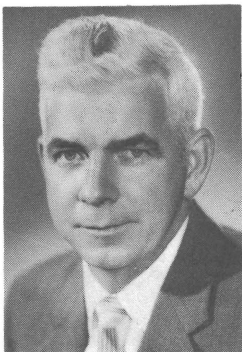
**FLANAGAN, Sid** (Republican) Representative from the 13th District of Grant and Kittitas Counties. Serving his second term. Born in Bellingham in 1909. Graduated from the University of Washington with A. B. Degree. He majored in Public Utilities. Farmer and cattleman. He is a member Elks and Moose. He and his wife Vyvien have four children.



**FOLSOM, Morrill F.** (Republican) Representative from the 20th District of Lewis County. Serving his fourth term. Born in Kent in 1905. On school board for fourteen years. Graduate of the University of Washington in 1928. Wholesale grower and shipper of forcing Azaleas. Member Masonic Bodies and Kiwanis Club. He and his wife Wilma have three children.



# Representatives



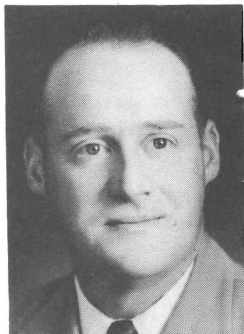
**GALLAGHER, P. J. "Jim"** (Democrat) Representative from the 28th District of Pierce County serving his second term. Born 1915 in King County. Graduate of Washington State University. Owner-operator of a service station. Member Moose Lodge. He and his wife Mabel have six children.

**GARRETT, Avery** (Democrat) Representative from the 47th District of King County. Serving his third term. Member of Renton City Council. Born in Georgia in 1916. Graduate of high school is employed as a sheet metal worker. Member St. Andrews' No. 35, F. & M, Issaquah Chapter No. 39 RAM. He and his wife Edna May have four children.



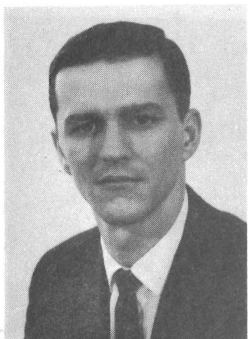
**GLEASON, Mrs. Marian C.** (Democrat) Representative from the 27th District of Pierce County will be serving her fourth term. Was on Rules and Order Committee in 1961. Born in Seattle she is a graduate of a business college. A homemaker. She and her husband James have five children.

**GOLDSWORTHY, Robert F.** (Republican) Representative from the 9th District of Whitman County. Serving his fourth term. Born, 1917 in Spokane. Graduated from Washington State University and is engaged in farming. Air Force veteran of World War II and the Korean Conflict. Member Sigma Nu Fraternity and Masons. He and his wife Jean Idele have two children.



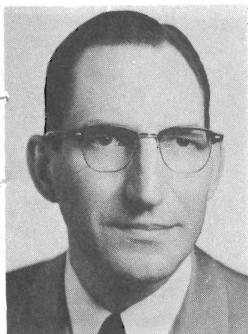
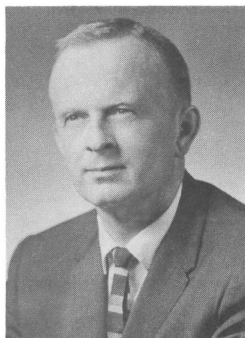
# Representatives

**GORTON, Slade** (Republican) Representative from the 46th District of King County. Serving his third term. Born in Chicago, Illinois in 1928. Graduate of Dartmouth College and Columbia University Law School and is an attorney. In U. S. Army 1946-47 and Air Force 1953-56. Member Gamma Delta Chi, Phi Beta Kappa and Phi Delta Phi Fraternities. He and his wife Sally have three children.



**GRANT, Gary** (Democrat) Representative from the 47th District of King County will be serving his first term. He was born in Chipewewa Falls, Wisconsin in 1934. Has a B.A. from St. Martin's College and is a supervisor for the Boeing Company. Member of the Eastgate-Newport Jaycees and Renton 306 Toastmasters. He and his wife Tanya have two children.

**HADLEY, H. D. "Herb"** (Republican) Representative from the 18th Dist. Serving his first term. Born, 1924 in Longview. Has a B.A. in Business Admin. from Wash. State University. An insurance agent and Broker, C.P.C.U. Served in World War II and TOM Team-Overseas-Pacific. Member Elks, Jr. C of C, Rotary, Pres. Cowlitz Co. Gen. Hospital Board of Dir., Longview Community Church Board, United Fund Board, DSA winner in 1955-Longview. He and his wife Dorothy have four children.



**HARRIS, Edward F.** (Republican) Representative from the 7th District of Spokane County. Serving his fifth term. Born, 1909 in Harrison, Idaho. Graduate of the School of Business, University of Idaho and Gonzaga Law School and is an attorney. Member of St. Mark Lutheran Church. He and his wife Marjorie have a son and daughter.

# Representatives



**HAUSSLER, Joe D.** (Democrat) Representative from the 1st District of Douglas and Okanogan Counties. Serving his first term. Born in Alvin, Texas in 1902. County Commissioner of Okanogan County for six years. Graduate of junior college and is engaged as an orchardist. Member Elks, Moose, Eagles, Masons and Kiwanis. He and his wife Pearl have one child.

**HAWLEY, Dwight S.** (Republican) Representative from the 44th District of King County. Has served five terms and six special sessions. Born, 1896 in Seattle. Attended the University of Washington. Is in real estate and owns and operates an Insurance Agency. Purple heart veteran of World War I. Member Eagles, Elks, American Legion, VFW, Kiwanis, Seattle C. of C., Ballard Commercial Club, Sunset Hill Improvement Club. He and his wife Dorothy have three sons.



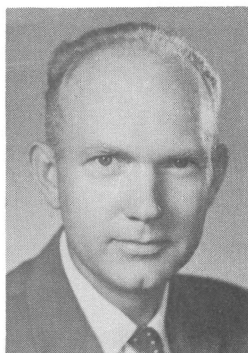
**HENRY, Mildred E.** (Democrat) Representative from the 17th District of Klickitat, Skamania and part of Clark Co. Serving her fourth term. Sen. Al Henry and Mrs. Henry are the first husband-wife team in the history of the Washington State Legislature. Born in Klickitat she has a business college education. Member of the Rebekahs, Royal Neighbors and Emblem Club. She and Senator Al Henry have two daughters.

**HERR, Gordon** (Democrat) Representative from the 31st District of King County will be serving his first term. Born in Seattle in 1926. High school graduate he is in retail lumber and home building. Served in the Air Force during World War II. Member of the Knights of Columbus and the Elks Lodge. He and his wife Patricia have five children.



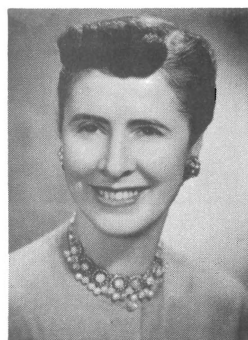
# Representatives

**HOOD, Jack C.** (Republican) Representative from the 41st District of Whatcom County. Serving his third term in the House. He was born in Ferndale in 1919. Attended the public schools of Ferndale and went to Whitman College. He is Vice-President of the First National Bank of Ferndale. Served in the Navy during World War II. Belongs to Elks, Grange, Farm Bureau and Phi Delta Theta. He and his wife Suzanne have four children.



**HUNTLEY, Elmer C.** (Republican) Representative from the 9th District of Whitman County. Serving his fourth term. Was born in St. John in 1915. Attended Washington State University and is a grain and livestock farmer. He is a member of the Masons and Mystic Shrine. Married and his wife's name is Necia.

**HURLEY, Mrs. Joseph E.** (Democrat) Representative from the 3rd District of Spokane County will be serving her sixth term. Born in Winnebago, Minnesota. Has B.A. from Holly Names College. A homemaker. She and her husband Joseph E. have four children.



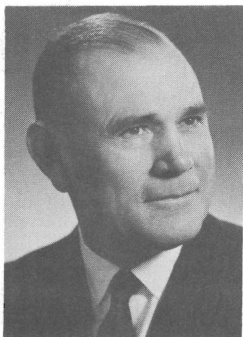
**JOHNSTON, Elmer E.** (Republican) Representative from the 6th District of Spokane County will be serving his ninth term. Born in Oakesdale in 1898. Graduate of Notre Dame and Georgetown Universities with law degrees and is an attorney. Was Prosecuting Attorney of Shoshone County, Idaho. Veteran of World War I. Member Sarah Club, Elks and Knights of Columbus. He and his wife Lillian have two children.

# Representatives



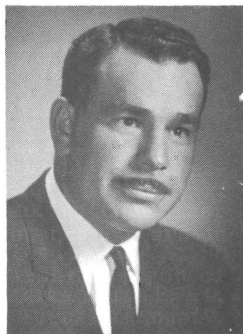
**Jolly, Dan** (Democrat) Representative from the 16th District of Benton and Franklin Counties. Serving his first term. Born in Leahy, Washington in 1907. He is a retired farmer. Mayor of Connell for two terms and a P.U.D. Commissioner of Franklin County. Member Lions Club, Grange and on the Executive Committee of the Washington State Grange. He and his wife Harriet have three daughters.

**JUELING, Helmut L.** (Republican) Representative from the 29th District of Pierce County. Serving his second term. Born in Loup City, Nebraska in 1913. Graduate of the University of Puget Sound with a B.A. degree. Owns laundry and linen supply business. He and his wife Ruth have two daughters.



**KING, Chet** (Democrat) Representative from the 19th District of Pacific and part of Grays Harbor County. Will be serving his tenth term. Born in Doty, Washington in 1901. High school graduate and works as a boom-man. Served three years in the U. S. Naval Air Force. Member International Woodworkers and International Fisheries Unions, Elks, Eagles and the Grange. He and his wife Ella Mae have three children.

**KINK, Dick J.** (Democrat) Representative from the 42nd District of Whatcom County. Will be serving his fourth term. Born in Bellingham in 1921. Attended Western Washington State College and U. S. Naval Service School. A commercial fisherman (Captain). Navy during World War II. Member Knights of Columbus, VFW, Bellingham Yacht Club, Purse Seine Vessel Owners Assn., Bellingham Quarterbacks Club and Bellingham High Dads Club. He and his wife Florence have one daughter.



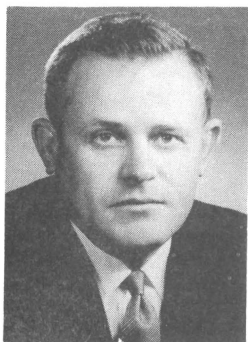


# Representatives

**KIRK, Mrs. Douglas (Gladys)** (Republican) Representative from the 36th District of King County. Will be serving her third term in the House. Born in Gypsum, Colorado. Graduate of a business college. She is a homemaker. Member of Business and Professional Women, American Legion Auxiliary, President of Queen Anne Community Club and Seattle Beautiful Inc. She and her husband Douglas G. Kirk have two sons.



**KLEIN, William C.** (Democrat) Representative from the 49th Dist. of Clark Co. Serving his third Term. Born, Oak Park, Ill. in 1921. Attended W.S.U. Graduate of University of Washington with B.S. & LL.B. and is a lawyer. Has served as an Asst. Atty. General; City Atty; and member of Wash. Tax Advisory Council. Served in the Army. Member B.P.O.E., Sigma Alpha Epsilon and Delta Theta Phi. Past Pres. of the Clark-Skamanian Co. Bar Assn. He and his wife Phyllis have two children.



**LELAND, Alfred E.** (Republican) Representative from the 48th District of King County will be serving his fourth term. Born in St. Marie, Idaho in 1921. Took some special courses at University of Washington and graduate of Boeing School of Aeronautics in Oakland, California. Was on Kirkland City Council for one year and served as Mayor of Kirkland six years. In real estate sales, Ocean Shores, Wash. Served in U.S. Army Air Force. Member Elks, Sons of Norway, Chamber of Commerce, Washington State Good Roads Association. Unmarried.

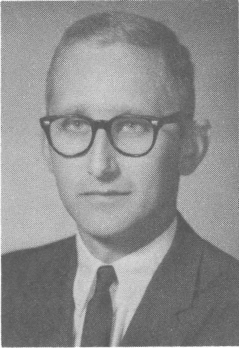


**LEWIS, Harry B.** (Republican) Representative from the 22nd District of Thurston County. Will be serving his second term. Born, 1927 in Pittsburgh, Penn. Attended University of Puget Sound and graduate of the University of Washington. A logging engineer. Served in the Army during World War II. Member Society of American Foresters, Elks, Phi Delta Theta and American Legion. He and his wife Jane have three children.





# Representatives



**LIND, Charles** (Republican) Representative from the 42nd District of Whatcom County. Serving his first term. Born in Bellingham in 1931. College graduate with a B.A. in Political Science and attended graduate school for one year in Economics. He is manager of a concrete products and building material company. Served two years in the Army Intelligence. Member of S.A.E., and B.P.O.E. He and his wife Janice have a son.

**LITCHMAN, Mark** (Democrat) Representative from the 45th District King County serving his fifth term. 1961 Majority Floor Leader and Chairman of Interim Subcommittee on Juvenile Crime. Born Seattle in 1925. B.A. in Sociology & Criminology and LL.B. from University of Wash. Practicing attorney firm of Litchman, Sullivan, Collier, Kennedy & McNair. Navy, World War II. Member American Legion, DAV, Jewish War Vets, State Bar Assn., Elks, YMCA, PTA, B'nai B'rith and Jewish National Leaders Group. He and his wife Claire have three children.



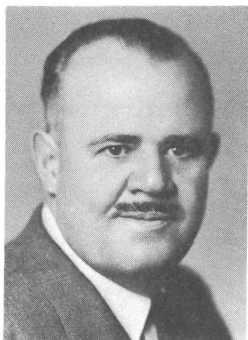
**LYBECKER, Gus** (Republican) Representative from the 10th Dist. of Asotin, Columbia and Garfield Counties. Serving fourth term. Born, 1887 in Lincoln Co. Two years in Law School, University of Wash, B.A. and M.A. in Education from Wash. State University. Was a school administrator, in television business but retired to enter politics. Garfield County Civil Defense Dir. past four years. Member Masons, IOOF, K.P., Psi Upsilon, Phi Delta Kappa, Eastern Star and Rebekahs. He and his wife Bess have three children.

**LYNCH, Marjorie** (Republican) Representative from the 14th District of Yakima County was appointed in December 1961 to fill the vacancy created by the resignation of Rep. Shropshire. She was elected in 1962. She was born in London, England and educated in England. She was an officer of Womens Auxiliary, Air Force (British Royal Air Force), member business and Professional Women and League of Women Voters. She and her husband E. Donald Lynch have three children.



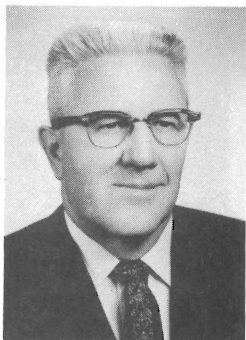
# Representatives

**MAHAFFEY, Audley F.** (Republican) Representative from the 46th District of King County. Serving his fifth term. Born in Pawnee, Oklahoma in 1899. Has Masters Degree from the U. of Washington in History and has taught school for over 35 years. Served in the Navy during World War I. Member of the Masons and Shrine. He and his wife Frances have three sons.



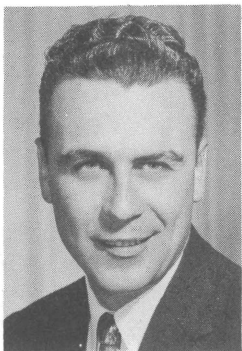
**MAST, Fred R.** (Republican) Representative from the 35th District of King County. Served in 1953, 53 Ex., 55, 55 Ex. and 57. Born in Superior, Wisconsin in 1896. Attended University of Washington and Montana. Is a businessman. Was in World War I and II. Member Masons, Shrine, Elks, American Legion, DAV and the Eagles. He and his wife Gay have two children.

**MAY, William J. S.** (Democrat) Representative from 3rd District of Spokane Co. Will be serving his 2nd term. Born in England in 1902. Graduate of high school and has taken special courses in advertising and electronics. He is a motion picture projectionist and Secretary of Spokane Labor Council for the past 12 years. Member Elks, Lions and Athletic Round Table. He and his wife Pearl have three children.



**McCAFFREE, Mrs. Mary Ellen** (Republican) Representative from the 32nd District of King County. Serving her first term. She was born in El Dorado, Kansas and is a graduate of Kansas State University with B. S. degree. A homemaker. She and her husband Kenneth have five children.

# Representatives



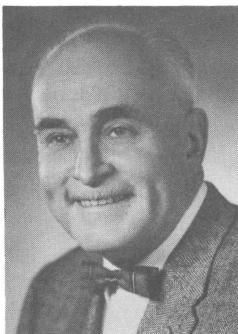
**McCormick, W. L. Bill** (Democrat) Representative from the 5th District of Spokane County will be serving his fourth term. Born Waukon, Iowa in 1925. High school graduate plus several night school courses. He is Staff Representative, United Steelworkers of America. Served with the 8th Air Force in England - 35 raids as a tail gunner. Member of the Grange and Eagles. He and his wife Jeri have two children.

**McDOUGALL, Bob** (Republican) Representative from the 12th District of Chelan County will be serving his second term. Born in Cashmere in 1924. Graduate of Wenatchee Valley College and Washington State University. Fruit grower and fruit warehouse and storage manager. In Navy World War II. Member Masons, Elks, Eagles, American Legion and Grange. He and his wife Jackie have three sons.



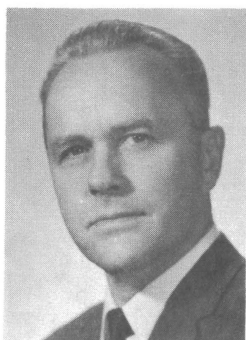
**McELROY, Drennan "Mac"** (Democrat) Representative from the 2nd District of Pend Oreille and Stevens Counties will be serving his second term. Born in Corydon, Iowa in 1900. Has had two years school in business administration and is a real estate broker. In Infantry during World War I. Member Masons, Knights of Pythias, American Legion and the Grange. He and his wife Patricia have two children.

**McFADDEN, Dr. James L.** (Democrat) Representative from the 24th District of Clallam, Jefferson and Mason Counties. Serving his fifth term. Was born in 1899 in Victoria, B. C., Canada. Graduate University of Toronto in Medicine and Surgery. Is a physician and surgeon. Was member of the Port Angeles City Council for six years. Served in the U. S. Navy. Member Elks, Masons, Moose and Kiwanis Club. He and his wife Florence have one son.



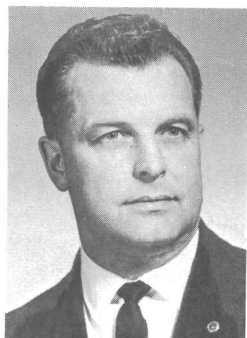
# Representatives

**METCALF, Jack** (Republican) Representative from the 38th District of Island and Snohomish Counties will be serving his second term. Born in Marysville in 1927. Graduate of Pacific Lutheran University and teaches algebra and mathematics. Served in the Army. He and his wife Norma have four daughters.



**MILES, Don** (Republican) Representative from the 22nd District of Thurston County. Will be serving his first term. Born in Spokane in 1920. Graduate of Washington State University and University of Washington Law School. He is a lawyer. Assistant Attorney General for three years. Army four years and E.T.O. for 22 months. Member B.P.O.E., Phi Alpha Delta (Legal) and Lambda Chi Alpha. He and his wife Katherine have four children.

**MOON, Charles** (Democrat) Representative from the 39th District of Island and Snohomish Counties. Will be serving his first term. Born in Sheridan, Wyoming in 1923. Graduate of Washington State University with a B.S. and D.V.M. Degrees. Served in the Army. Married and he and his wife M. Ellen have three children.



**MOOS, Donald W.** (Republican) Representative from the 8th District of Adams, Ferry and Lincoln Counties will be serving his third term. Born 1923 in Spokane. Graduate of Washington State University with B.S. degree. He is a wheat and cattle rancher. Infantryman in World War II. Member Masonic Orders, El Katif Shrine, Grange, Lambda Chi Alpha, Phi Kappa Phi and Lions. He and his wife Parmalee have two children.

# Representatives



**MORPHIS, Richard W.** (Republican) Representative from the 7th District of Spokane County will be serving his fourth term. Born 1929 in Spokane. Graduate of Walla Walla College with B.A. in Business Administration. Business manager of a Spokane sanitarium. Member El Katif Shrine, Oriental Lodge #74 F. & A.M., Lions, Elks and Odd Fellows. He and his wife Violet have one son.

**MORRISSEY, Ed** (Republican) Representative from the 14th District of Yakima County. Serving his third term. Born in Salt Lake City, Utah in 1923. Attended St. Martin's College, Seattle U. and has a B.A. in Journalism from the University of Washington. Engaged in Public Relations. Served in War II. Member of BPOE 318, Yakima Eagles Aerie 289. He and his wife Florence have four children.



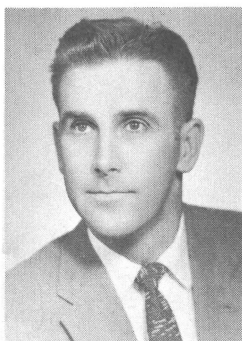
**MUNDY, Roy** (Democrat) Representative from the 13th District of Grant and Kittitas Counties. Served in the House in 1953, 1955 and 1957. Born in Abbeville, South Carolina in 1912. Attended the University of Washington and is a real estate broker. Was in the Coast Guard in World War II. Member Alpha Sigma Phi, American Legion and Ephrata Elks Lodge. Married and his wife's name is Marjorie.

**NEWSCHWANDER, Charles E.** (Republican) Representative from the 29th District of Pierce County will be serving his second term. Born in 1920 in Tacoma. Attended University of Puget Sound, graduated from University of Oregon Dental School and is a dentist. In Navy during World War II and Korean Conflict. Member Lions Club and Masons. He and his wife Emma have four children.



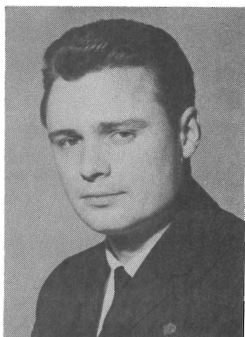
# Representatives

**O'BRIEN, John L.** (Democrat) Representative from the 33rd Dist. of King Co. Serving his 11th term. Born in Seattle in 1911. Minority Floor Leader 1953-55. Speaker of the House 1955, 57, 59 and 61. Graduate of Western Institute of Professional Accounting and is a CPA. Served in the Coast Guard. Member Eagles, Knights of Columbus and Washington Athletic Club. He and his wife Mary have five children.



**O'CONNELL, W. J.** (Democrat) Representative from the 28th District of Pierce County serving his third term. Born in Tacoma in 1922. Has B.A. and B.E. degrees having graduated from the University of Washington and University of Puget Sound. A teacher. Served as a pilot and officer in Air Force during World War II. Member Elks and Eagles. He and his wife Edna have four children.

**ODELL, Mike E.** (Republican) Representative from the 4th District of Spokane County serving his first term. Born in Spokane in 1937. He is a T.V. Production Engineer for KREM T.V. Station. He and his wife Marie have four children.



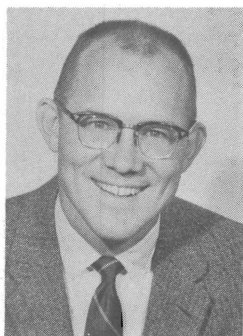
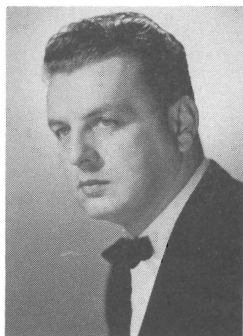
**O'DONNELL, Miss Ann Teresa** (Democrat) Representative from the 37th District of King County. Was appointed in 1959 and will be serving her third term. She was born in Helena, Montana. Graduate of Seattle University and attended University of Washington Law School for one year. In public relations. Member Capitol Hill Commercial Club, Urban League, Totem Chapter of Business and Professional Women and on King County Democratic Executive Board. Unmarried.

# Representatives



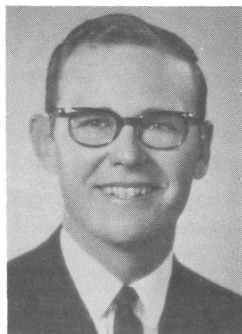
**OLSEN, Ray** (Democrat) Representative from the 35th District of King County. Serving his seventh term. Born 1904 in Baker, Oregon. Senior member World's Fair Commission. Has a business college education and is Budget Director of King County Commissioners - District No. 2. Member Elks, Eagles, Washington Athletic Club, and Swedish Club. Married and his wife's name is Ellen.

**PERRY, Robert A.** (Democrat) Representative from the 45th District of King County will be serving his third term. Born in New York in 1921. Graduate of high school and USMS School of Engineering. Business representative for electrical workers' local No. 46. Officer in the Merchant Marines during World War II and Korean Conflict. He and his wife Nancy have three daughters and a son.



**PRITCHARD, Joel M.** (Republican) Representative from the 36th District of King County serving his third term. Born in Seattle in 1925. Attended Marietta College in Ohio. Is manager of Griffin Envelope Company. In Army in World War II. Member of Kiwanis Club. He and his wife Joan have four children.

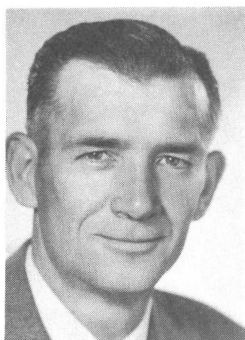
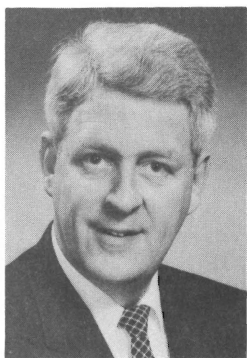
**REESE, Walt** (Republican) Representative from the 16th District of Benton and Franklin Counties. Will be serving his first term. Born in Kennewick in 1927. Has a high school education and is a wheat rancher. Served in the Army. He is married and he and his wife Arlie have three children.





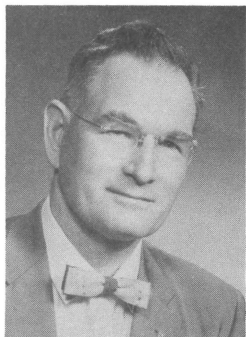
# Representatives

<sup>#</sup>  
<sup>six</sup>  
**ROGERS, Jack** (Democrat) Representative from the 23rd District of Kitsap County. He served ~~three~~ terms in the Senate but will be serving his first term in the House. Was born in Utah in 1915. Attended the University of Washington for two years and now runs a newspaper and print shop. Member of the Elks Lodge. He and his wife Dorothy have two daughters.



**ROSENBERG, K. O.** (Democrat) Representative from the 2nd District of Pend Oreille and Stevens Counties served in the House in 1949, 53, 55, 57 and 59 so will be serving his sixth term. Born in Spokane in 1920. Graduate of high school he is a farmer and logger. Served four years in the Navy during World War II. Member the Grange and Eagles Lodge. He and his wife Verna have three children.

**SAVAGE, Charles R.** (Democrat) Representative from the 24th District of Clallam, Jefferson and Mason Counties. Served in the House in 1939, 41, 43, 51, 55, and 57. Born in La Farge, Wisconsin in 1906. Elected to Congress in 1944. Graduate of high school and has taken some special training. Christmas tree management and logger. Member Elks, Moose, Eagles, Grange, Modern Woodman of America and W.O.W. He and his wife Helen have two children.



**SAWYER, Leonard A.** (Democrat) Representative from the 25th District of Pierce County will be serving his fifth term. Born in Puyallup in 1925. Graduated from University of Puget Sound and University of Washington Law School and is an attorney. Served as Deputy Prosecuting Attorney of Pierce County. Navy veteran. Member Elks, American Legion and VFW. He and his wife Beverly have four daughters.

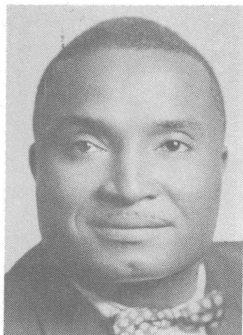
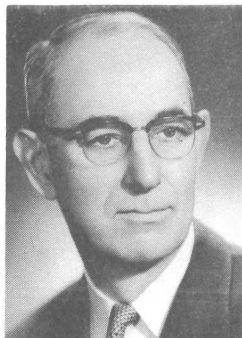


# Representatives



**SCHAEFER, Robert M.** (Democrat) Representative from the 49th District of Clark County will be serving his third term. Born in Seattle in 1930. Graduate of Willamette University Law School and is an attorney. Served in the Army with the rank of Captain. Member Phi Delta Phi and Phi Delta Theta. He and his wife Sally Jo have two children.

**SILER, Harry A.** (Republican) Representative from the 20th District of Lewis County will be serving his seventh term. Born in Winlock in 1898. Graduate from Washington State University with B.S. degree and is a livestock farmer. Served in World War I. Member of the Grange. He and his wife Nora have one son.



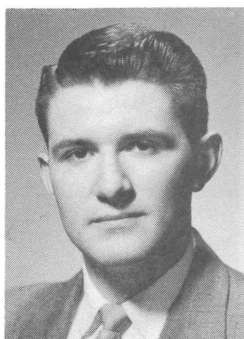
**SMITH, Samuel J.** (Democrat) Representative from the 37th District of King County will be serving his third term. Born in Louisiana in 1922. Graduated from Seattle University with B.S. in Social Science and from the University of Washington with B.A. in Economics. Employed by the Boeing Airplane Company. Warrant officer during World War II. Member VFW and Phi Beta Sigma fraternity. He and his wife Marion have six children.

**SWAYZE, Mrs. Frances G.** (Republican) Representative from the 26th District of Pierce County has served five terms. Born in Council Bluffs, Iowa. She is a graduate of the University of Puget Sound and a Research Assistant at the University. Member PEO Sisterhood and Pi Beta Phi Sorority. She is a widow and has five children.



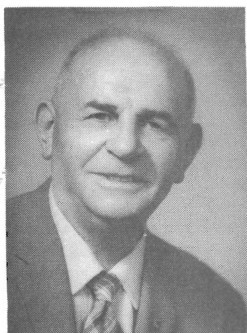
# Representatives

**TAYLOR, Dick** (Democrat) Representative from the 38th District of Island and Snohomish Counties. Serving his second term. Born in Everett in 1918. Attended St. Martin's College and graduated from Stanford University. He runs a sporting goods store. Member of the Everett Elks Club. He and his wife Irene have three children.



**UHLMAN, Wesley C.** (Democrat) Representative from the 32nd District of King County. Serving his third term. Born 1935 in Cashmere. Attended Seattle Pacific College and graduate of University of Washington Law School. An attorney. Presently serving in the Washington National Guard. Member Theta Delta Chi, Pi Sigma Alpha, Phi Alpha Delta Fraternities, Kiwanis, Wallingford Commercial Club and Board member of Wallingford Boys Club. He and his wife Laila have a son.

**WANG, Arnold S.** (Republican) Representative from the 23rd District of Kitsap County. Serving his sixth term. Born in 1900 in Chicago, Illinois. High school graduate has taken business courses and is in real estate and investment business. Member Eagles, Elks, Son's of Norway, Lions, Chamber of Commerce, Washington Athletic Club and the Kitsap Golf and Country Club. He and his wife Myrtle have three children.



**WEDEKIND, Max** (Democrat) Representative from the 34th District of King County. Serving 10th term. Born in San Francisco, California in 1899. Attended California School of Mechanical Arts and Mission College. He is a labor representative. Member the Eagles. He and his wife Elsie have one daughter.

# Representatives



**WINTLER, Miss Ella** (Republican) Representative from the 49th District of Clark County. First elected in 1939 and is now serving her tenth term. Born in Vancouver and is a graduate of the University of Washington with A.B. and A.M. degrees and is a retired school teacher. Unmarried.

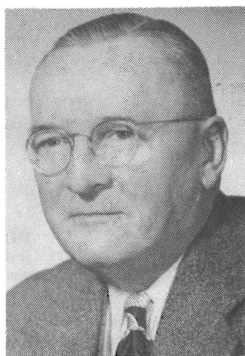
**WITHERBEE, C. G.** (Democrat) Representative from the 31st District of King County. Serving his third term. Born in Frazer, Montana in 1922. High school graduate is Supervisor in King County Engineer's Office. Member Elks, PTA, Machinist's Union Local 751 and the YMCA at Highline. He and his wife Mary have six children.



**YOUNG, William E.** (Republican) Representative from the 43rd District of King County will be serving his first term. Born in Spokane in 1926. Bachelor's degree in Business Administration University of Washington and has a Standard Diploma, American Savings and Loan Institute. Loan Officer with the Pacific 1st Federal Savings & Loan Association. Served in the Army during Korean Conflict. Member Alpha Sigma Phi and the Seattle Tennis Club. He and his wife Shirley have two daughters.

# Representatives

**HOLCOMB, S. R. "Si"** (Democrat) Chief Clerk of the House of Representatives from the 48th District of King County. Has served as Chief Clerk for twenty-nine years. Born 1895 in Ritzville. Graduate of high school and attended the University of Washington for two years. Is a real estate broker. Served for two years in World War I. Member Elks and is a Past Commander of the American Legion. He and his wife Helen have three children.



**HYPPA, Elmer A.** (Sergeant-at-Arms) (Democrat) from the 25th District of Pierce County has served two regular and two special sessions in the House. Will be serving his 4th term as Sergeant-at-Arms in the House. Born in Wilkeson in 1919. High school graduate and is a dairy farmer. Served three years in Seabees in South Pacific during World War II. Member Masons, Grange, Elks, VFW, Kiwanis and Past State Pres. of the Fraternal Order of Eagles. He and his wife Saima have three sons.



VICTOR A. MEYERS, Secretary of State  
Chief Election Officer, State of Washington

ROSTER OF MEMBERS  
STATE OF WASHINGTON LEGISLATURE  
GROUPED AS TO DISTRICTS REPRESENTED

DIST.	COUNTIES	STATE SENATORS	STATE REPRESENTATIVES
1	Douglas, Okanogan	Hallauer (D)	Bozarth (D), Haussler (D)
2	Pend Oreille, Stevens	McMillan (D)	McElroy (D), Rosenberg (D)
3	Spokane, part	Keefe (D)	Hurley (D), May (D)
4	Spokane, part	Herrmann (D)	Day (D), Odell (R)
5	Spokane, part	Cooney (D)	Campbell (D), McCormick (D)
6	Spokane, part	Guess (R)	Adams (R), Johnston (R)
7	Spokane, part	Cowen (D)	Harris (R), Morphis (R)
8	Adams, Ferry, Lincoln	Raugust (R)	Moos (R),
9	Whitman	Neill (R)	Goldsworthy (R), Huntley (R)
10	Asotin, Columbia, Garfield	Donohue (D)	Lybecker (R)
11	Walla Walla	Frelse (R)	Ahlquist (R), Copeland (R)
12	Chelan	Hanna (D)	Braun (D), McDougall (R)
13	Grant, Kittitas	Washington (D)	Hundy (D), Flanagan (R)
14	Yakima, part	Foster (R)	Brachtenbach (R), Morrissey (R), Lynch (R)
15	Yakima, part	Woodall (R)	Canfield (R), Clark (R)
16	Benton, Franklin	McCormack (D)	Jolly (D), Reese (R)
17	(Clark, part; Klickitat, Skamania)	Henry (D)	Henry (D)
18	Cowlitz, Wahkiakum	Talley (D)	DeJarnatt (D), Hadley (R)
19	Grays Harbor, part; Pacific	Bailey (D)	King (D)
20	Lewis	Chytill (R)	Folsom (R), Siler (R)
21	(Grays Harbor, except 19 precincts)	Charette (D)	Anderson (D), Burtch (D)
22	Thurston	DeGarmo (D)	Lewis (R), Miles (R)
23	Kitsap	Morgan (D)	Beck (D), Rogers (D), Wang (R)
24	Clallam, Jefferson, Mason	Sandison (D)	Conner (D), McFadden (D), Savage (D)
25	Pierce, part	Knoblauch (D)	Brouillett (D), Sawyer (D)
26	Pierce, part	Petrich (D)	Comfort (R), Swayze (R)
27	Pierce, part	Kupka (D)	Gleason (D), Earley (R)
28	Pierce, part	Rasmussen (D)	O'Connell (D), Gallagher (D)
29	Pierce, part	McCutcheon (D)	Jueling (R), Henschwender (R)
30	King, part	Stender (R)	Beierlein (D), Bigley (D)
31	King, part	Hess (D)	Ackley (D), Witherbee (D), Herr (D)
32	King, part	England (R)	Uhlman (D), McCaffree (R)
33	King, part	Connor (D)	O'Brien (D), Chatalas (D)
34	King, part	Grelve (D)	Wedekind (D), Eberle (R)
35	King, part	Riley (D)	Olsen (D), Mast (R)
36	King, part	Moriarty (R)	Kirk (R), Pritchard (R)
37	King, part	Dore (D)	O'Donnell (D), Smith (D)
38	Island, part; Snohomish, part	Wardesich (D)	Taylor (D), Dootson (D), Metcalf (R)
39	Island, part; Snohomish, part	Gissberg (D)	Backstrom (D), Moon (D)
40	San Juan, Skagit	Rickdall (R)	Eldridge (R), Berentson (R)
41	Whatcom, part	Lennart (R)	Hood (R)
42	Whatcom, part	Atwood (R)	Kink (D), Lind (R)
43	King, part	Williams (R)	Evans (R), Young (R)
44	King, part	Peterson (R)	Bergh (D), Hawley (R)
45	King, part	Gallagher (D)	Litchman (D), Perry (D)
46	King, part	Ryder (R)	Gorton (R), Mahaffey (R)
47	King, part	Durkan (D)	Garrett (D), Grant (D)
48	King, part	Thompson (R)	Andersen (R), Leland (R)
49	Clark, part	Foley (D)	Klein (D), Schaefer (D), Wintler (R)

## Summary

SENATE	MEMBERS	HOUSE	MEMBERS
Democrats	32	Democrats	51
Republicans	17	Republicans	48
Total	49	Total	99

~ THE PRESS ~

ALTSCHULL, HERB, KING Radio  
BARRETT, ELDON, United Press International  
BURT, LYLE, Seattle Times  
COWLES, WILLIAM III, Spokane Spokesman-Review  
CUMMINGS, ROBERT C., Associated Press - Radio KGY  
CUNNINGHAM, ROSS, Seattle Times  
EVA, WALTER, United Press Intl.  
FERGUSON, ADELE, Bremerton Sun  
FISCHER, JACK, Spokane Spokesman-Review  
FORTNEY, CURT, KING-TV  
HERRING, CHARLES, KING-TV  
HITTLE, LEROY M., Associated Press  
INGRAM, CARL, United Press Intl.  
JOHNS, CHARLES, Tacoma News-Tribune  
KING, PAUL M., Longview Daily News  
KOENNINGER, TOM, Centralia Chronicle  
KOMEN, JOHN, Associated Press  
KEMPSTER, NORMAN, United Press Intl.  
LAWRENCE, RICHARD S., Daily Olympian  
LEMON, JOHN J., Spokane Chronicle  
MURPHY, JAMES, Wash. State Radio-TV-News Bureau  
NELSON, STUB, Seattle Post-Intelligencer  
OLSEN, TOM, Radio KGY, Wash. State Radio-TV News Bureau  
PYLE, JACK, Tacoma News-Tribune  
RIGERT, JOSEPH, Associated Press  
ROBINSON, HERB, KOMO-TV  
RYAN, SALLY, Associated Press  
SIERER, ED, KOMO-TV  
SCHULMAN, ROBERT, KING-TV  
STENSON, AL, KING-TV  
WALKER, C. J., Daily Olympian  
WHITMAN, DON, Radio KITN  
~~~~~  
ASSOCIATED PRESS - Ground Floor, Phone 5098  
UNITED PRESS INTL. ~ Ground Floor, Phone 6534  
WASHINGTON STATE RADIO-TV NEWS BUREAU ~  
Ground Floor, Phone 6814