

Update on City Culvert Inventories

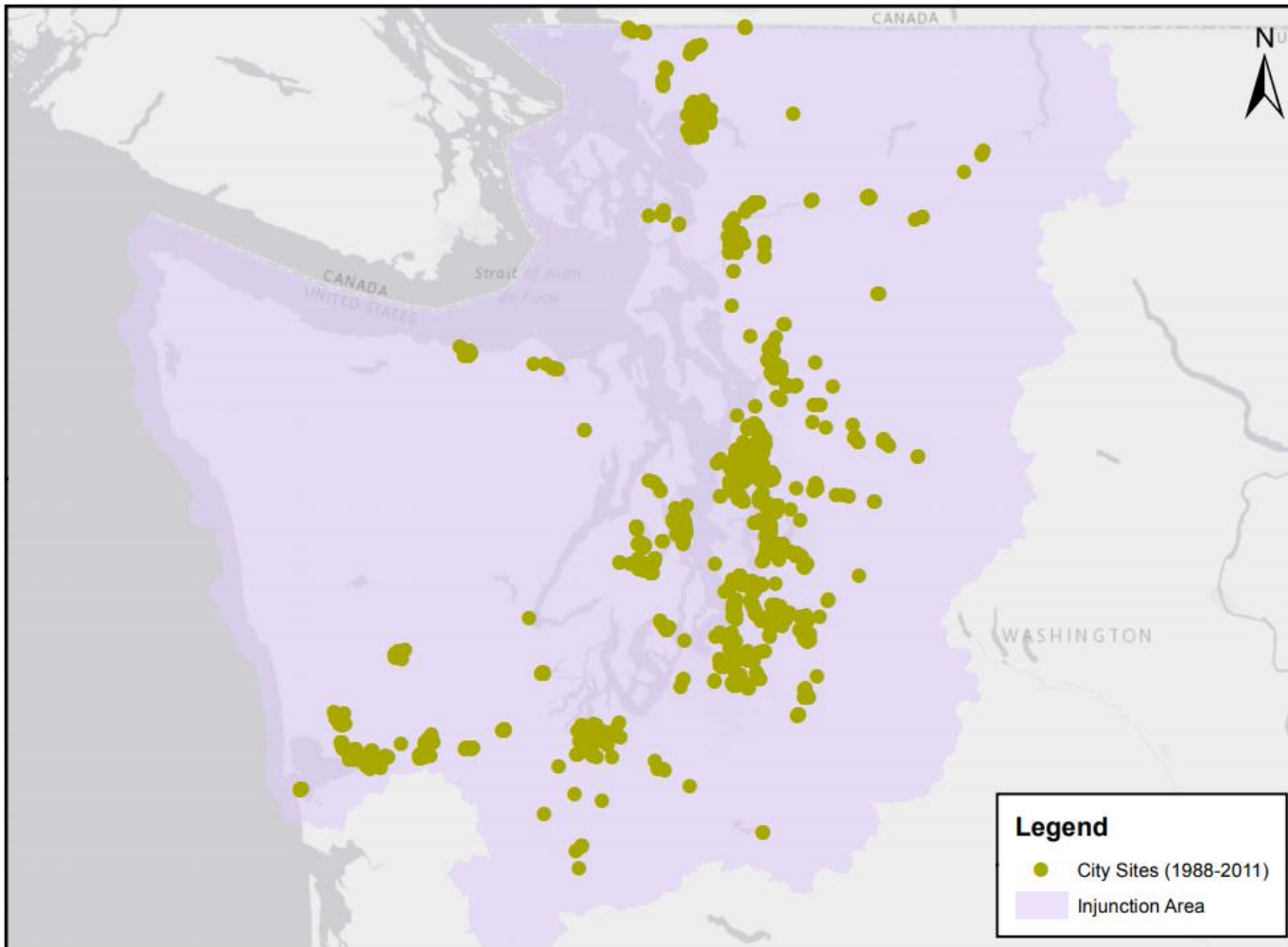
Presentation to Joint Transportation Committee

July 25, 2019

Carl Schroeder



City-Owned Fish Passage Sites 1988-2011

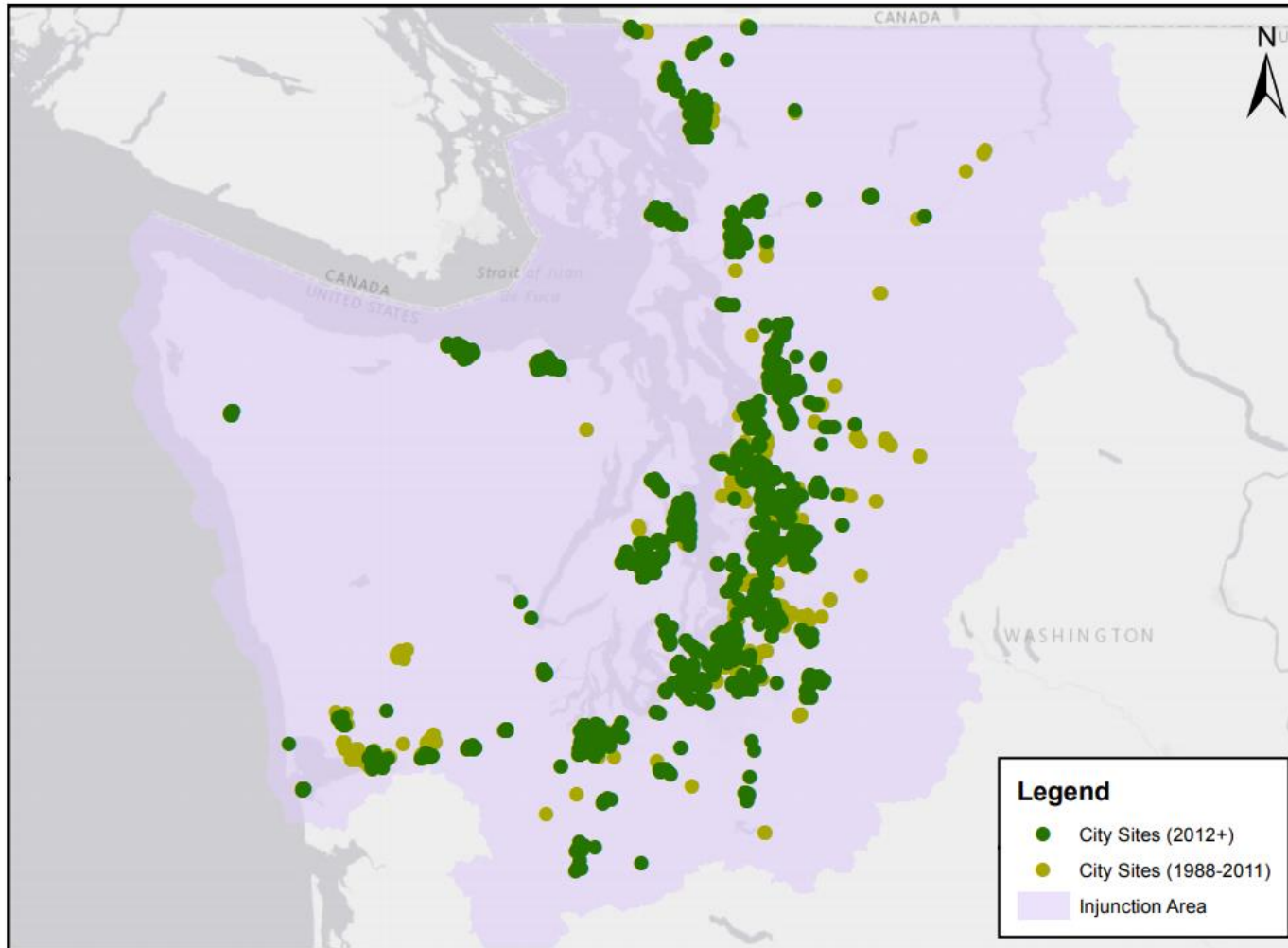


Prior to beginning contracted inventory work for AWC in 2012:

DFW Database included 1391 city owned fish passage sites in the case area.

707 were identified as barriers

City-Owned Fish Passage Sites Assessed After 2011



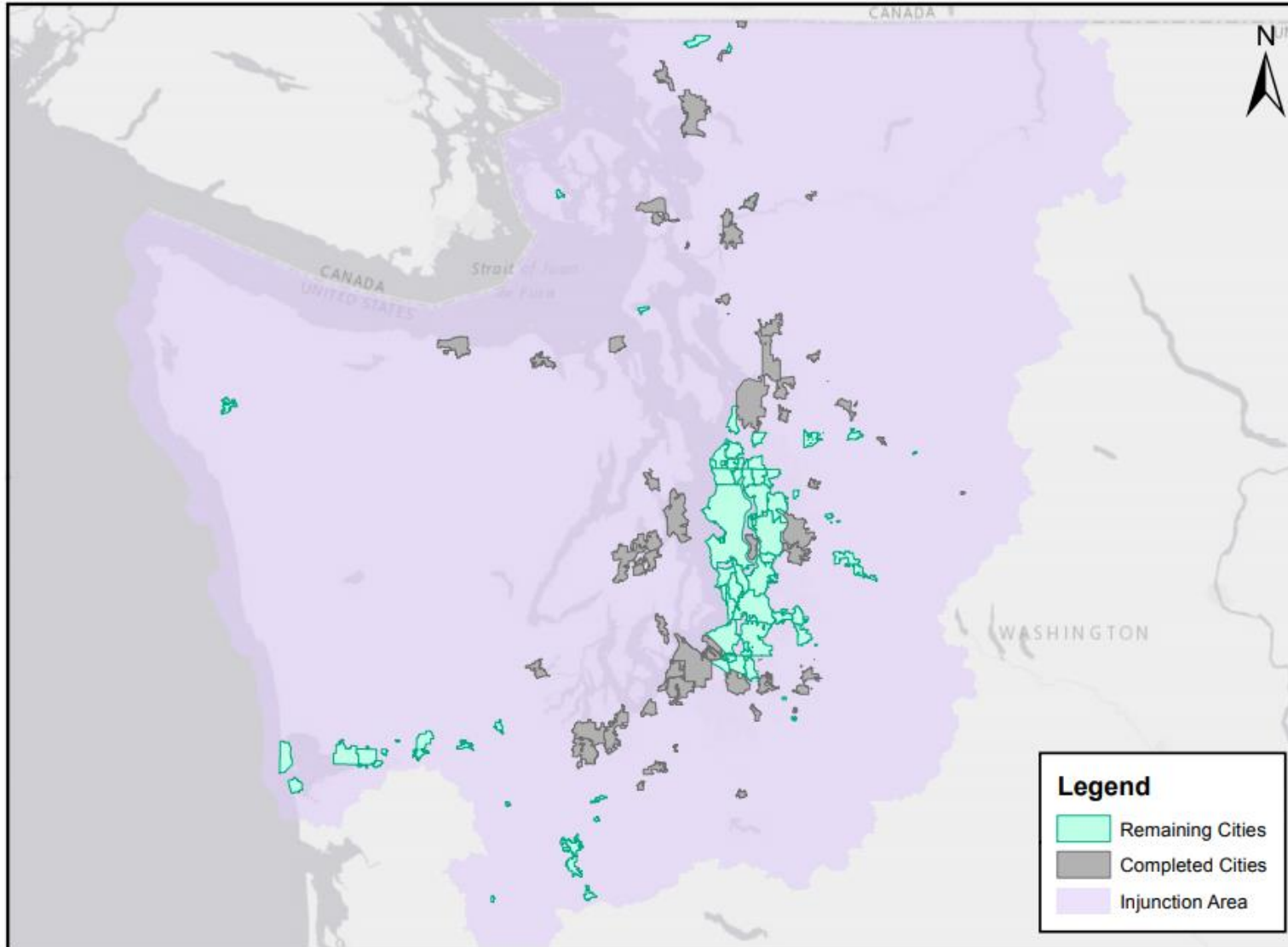
Current status:

DFW Database now includes
2,647 city owned fish passage
sites in the case area

1,293 identified as barriers

407 sites were also re-
assessed

Completed and Remaining City Surveys



Investments:

2012 Supplemental - \$400k

2013-15 - \$200k

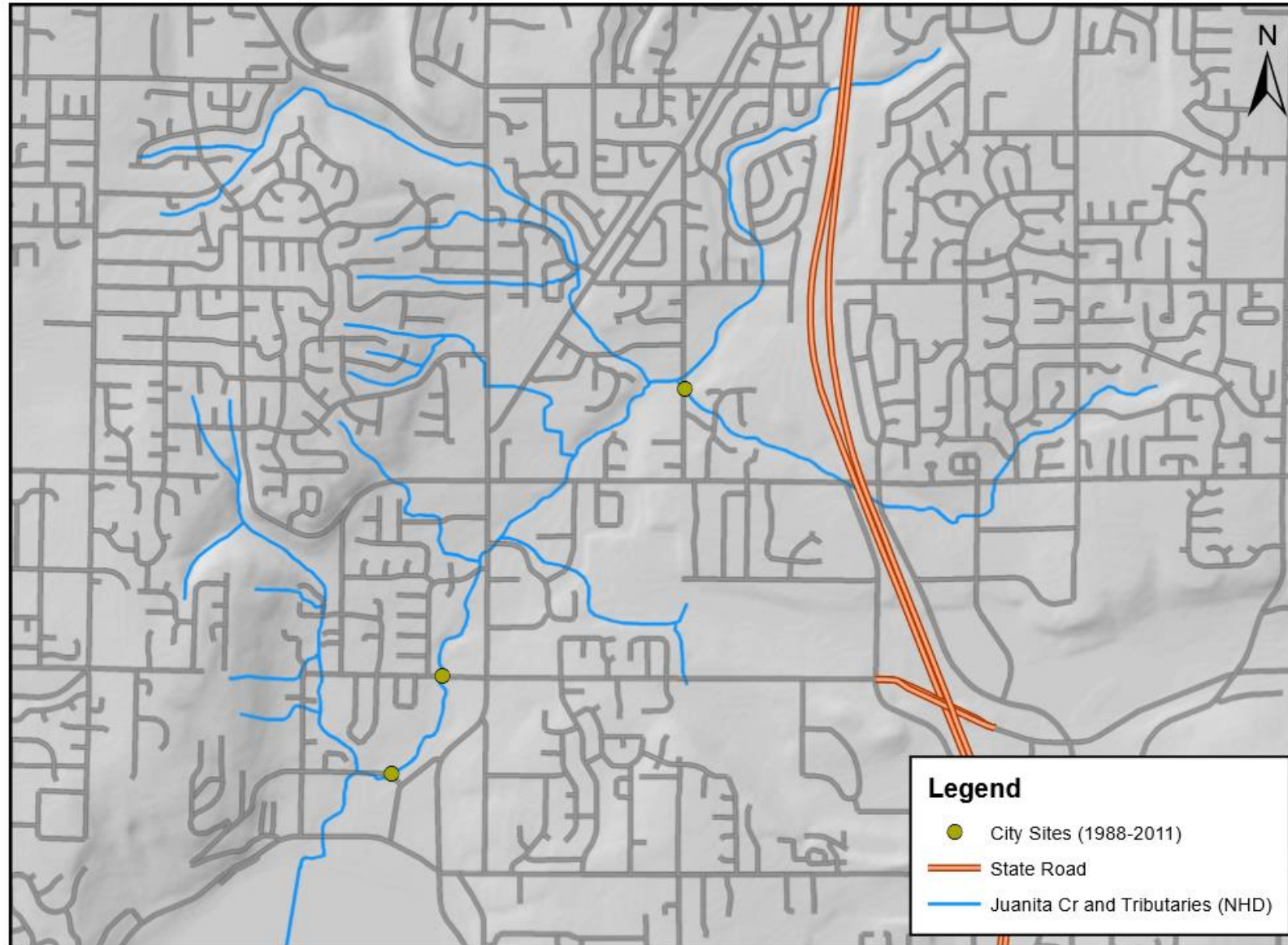
2017-19 - \$250k

2019-21 - \$350k

Fund source: Gas tax receipts that would otherwise have been refunded to individual cities



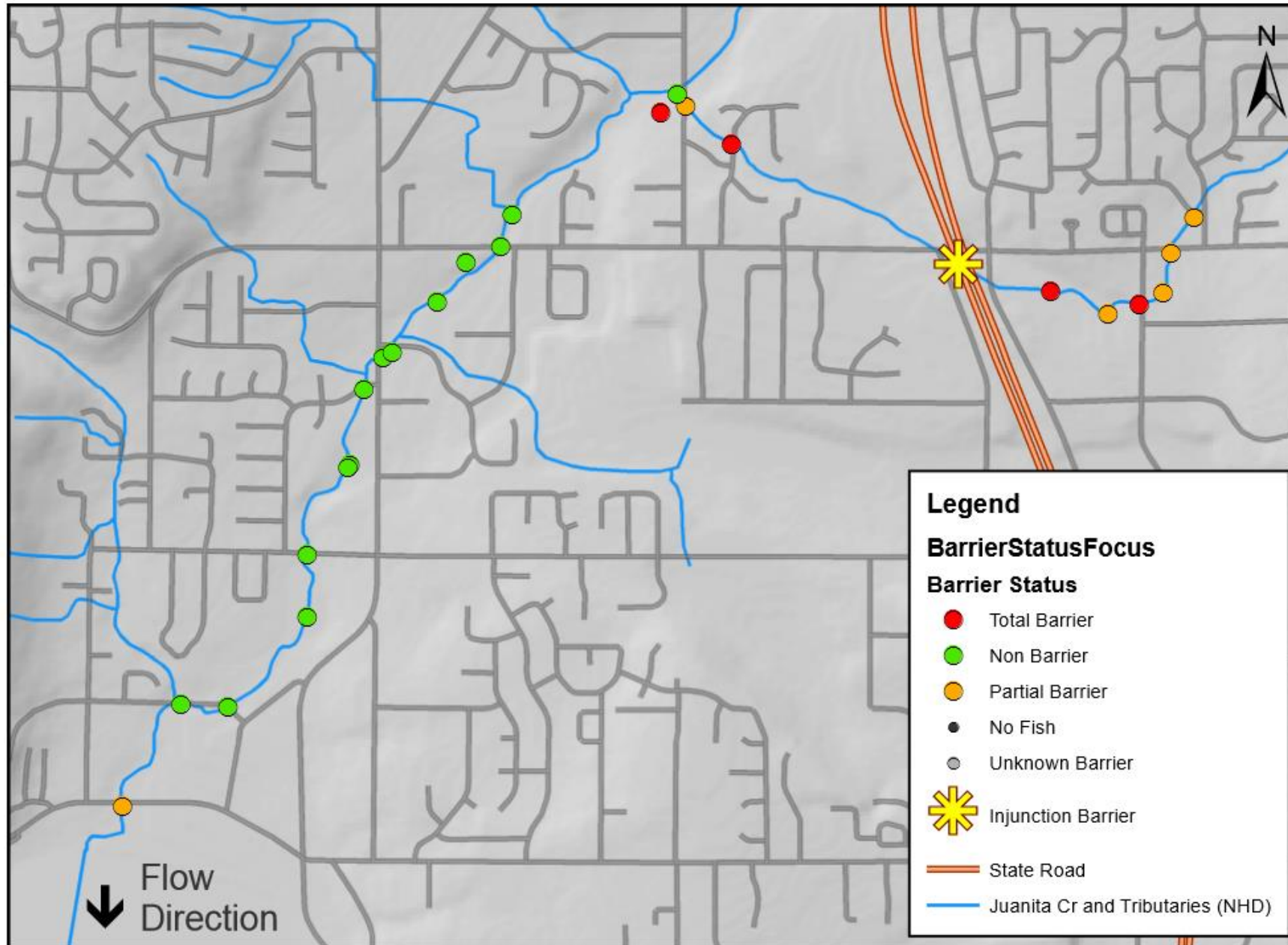
Juanita Creek Watershed City-Owned Fish Passage Sites (1988-2011)



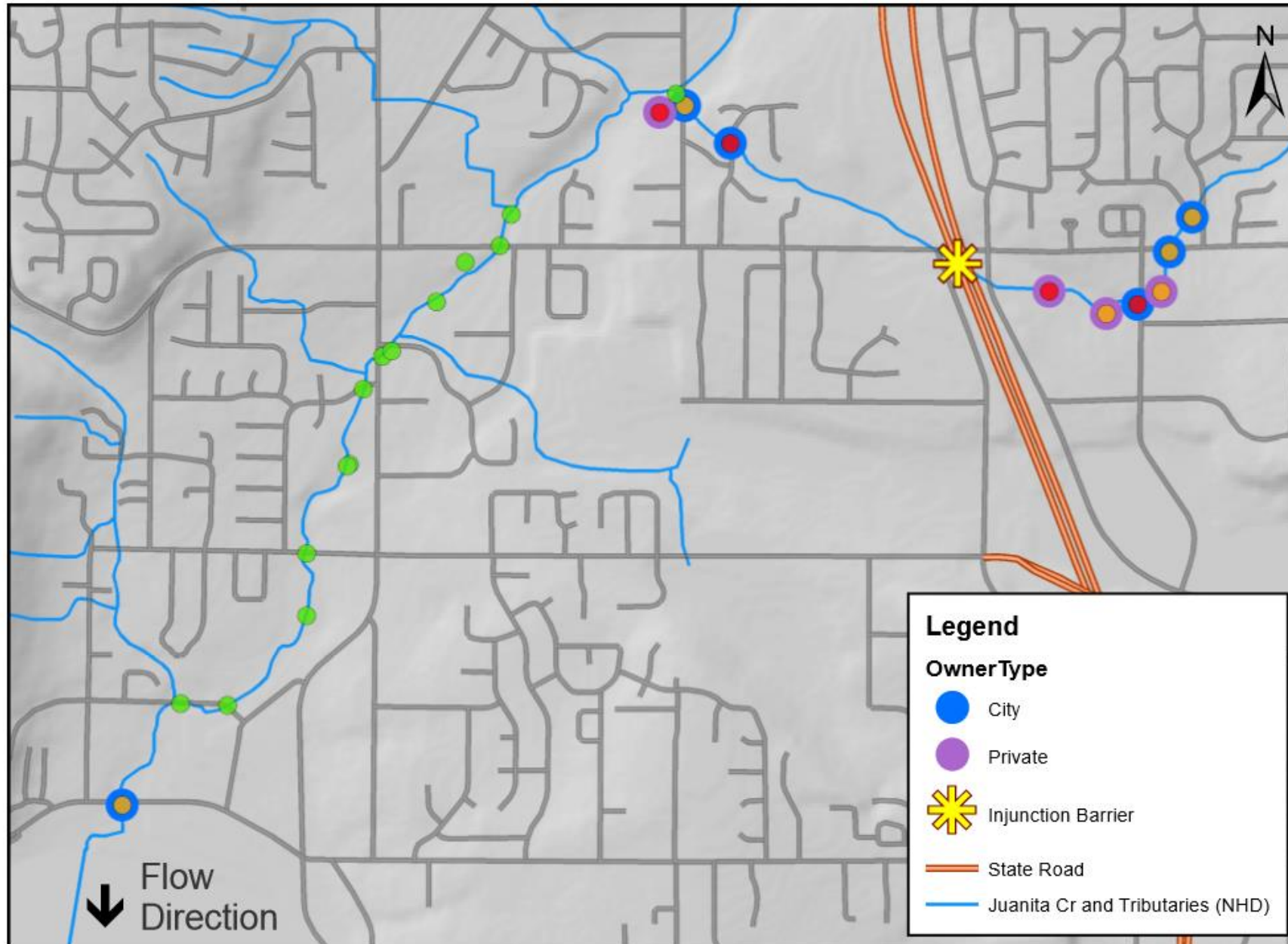
All Juanita Creek Watershed City-Owned Fish Passage Sites



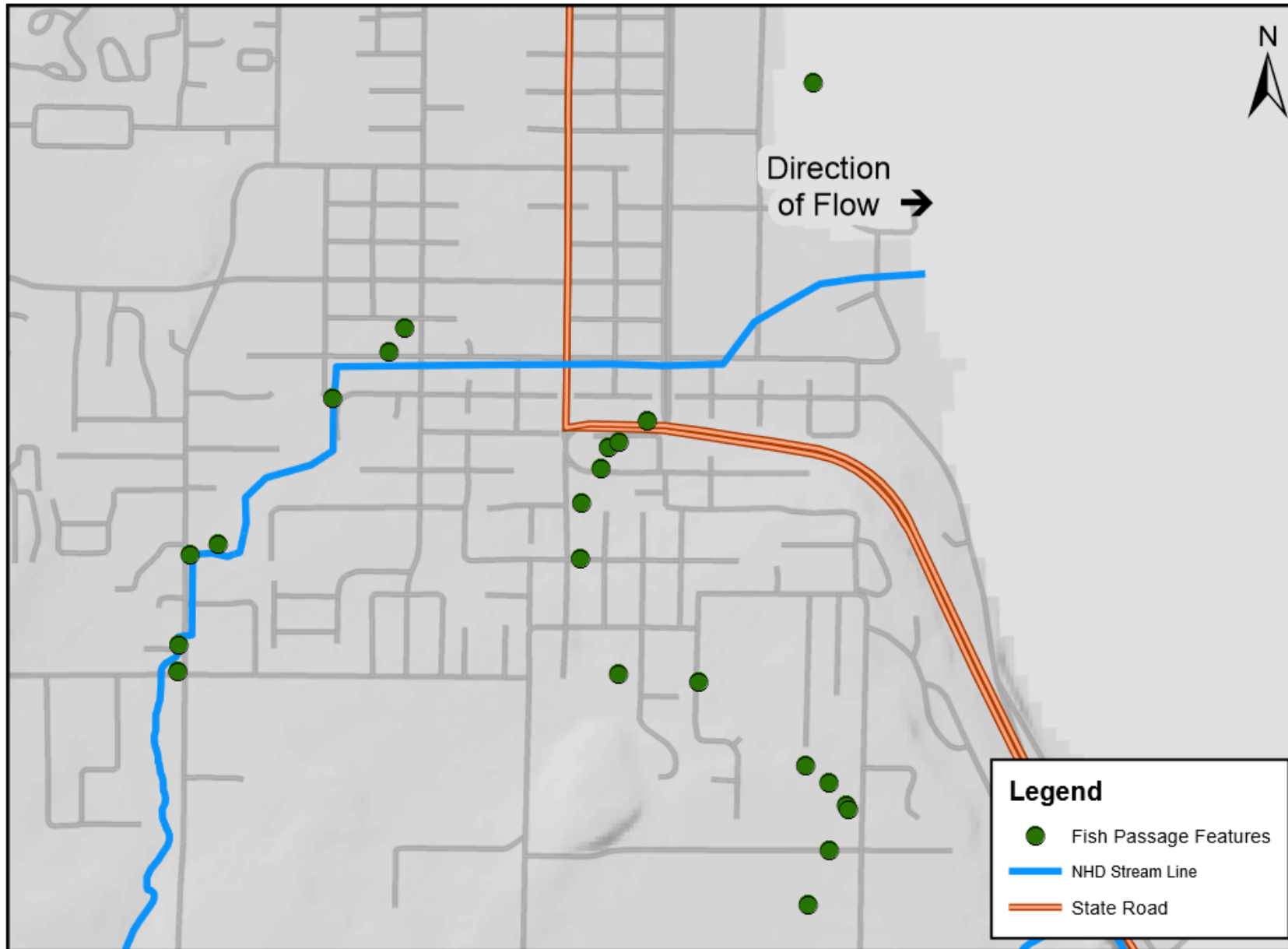
Sites on Juanita Creek Tributary Associated with an Injunction Barrier



Barrier Ownership Downstream and Upstream of Injunction Barrier



Fish Passage Sites and NHD Stream Lines in Anacortes, WA

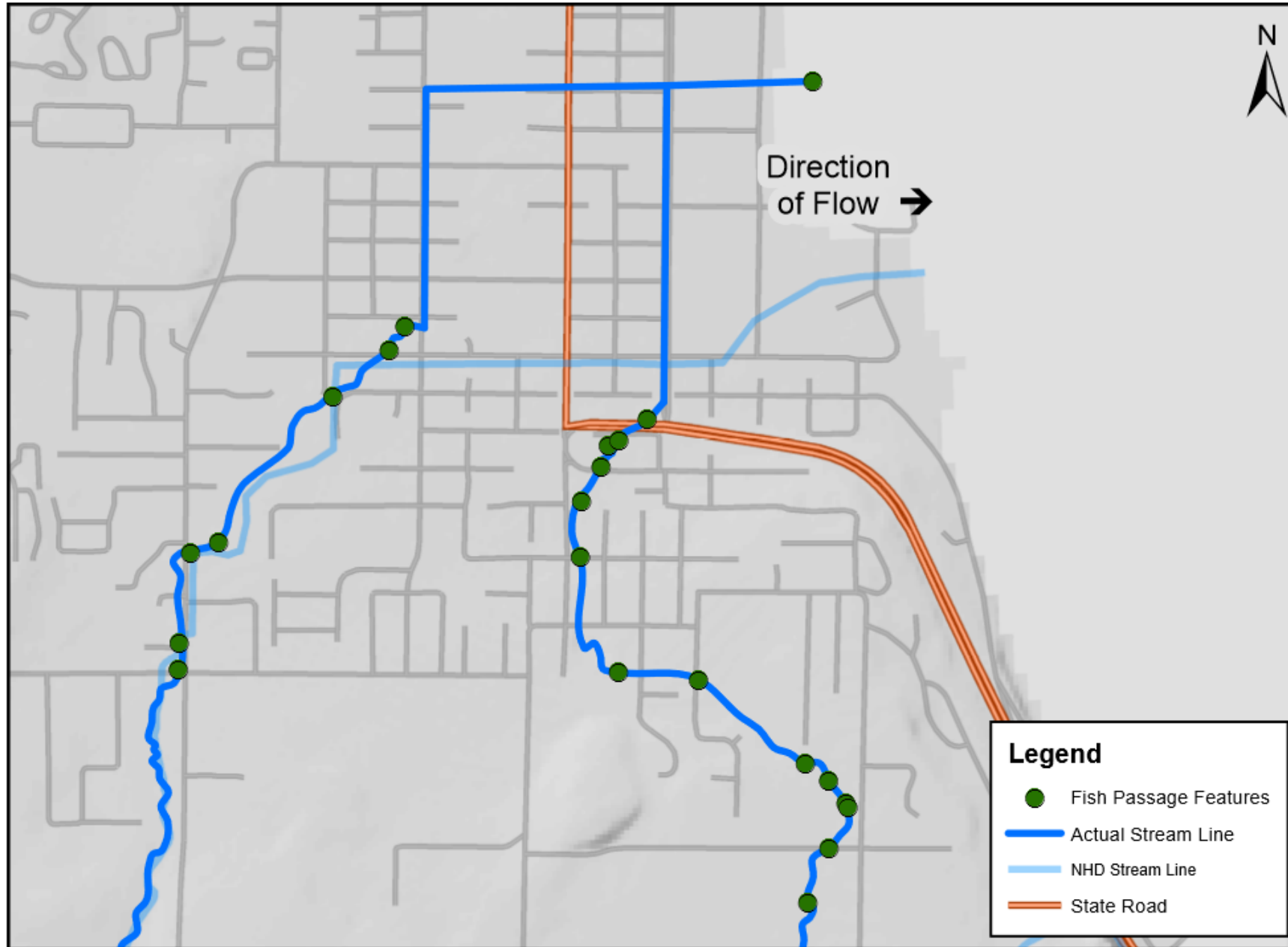


Mapping Challenges

- Stream layer is sometimes incorrect
- Resources are not available to incorporate more accurate data that has been collected through our surveys
- Leads to challenges considering presence of up and downstream barriers



Fish Passage Sites and Actual Stream Lines in Anacortes, WA



This inventory can help identify strategic investments:

For WSDOT's 19-21 Delivery Plan there are:

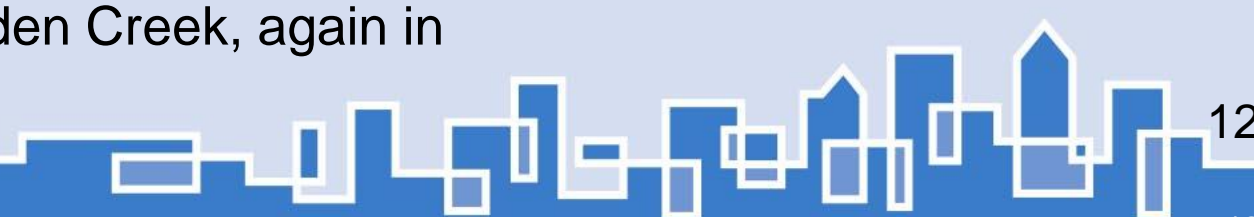
- 33 city-owned downstream barriers
- 117 city-owned upstream barriers
- 30 city-owned up and downstream crossings whose status cannot readily be determined because of their complexity.

NOTE: These numbers don't tell the whole story, there is nuance here. In some cases these numbers are examples of good coordination, not a lack thereof.



THERE ARE EXAMPLES OF GOOD COORDINATION TO BUILD ON

- 8 Downstream on Squalicum Creek in Bellingham. City asked WSDOT to put the state barrier on SR 542 to their short term plans to leverage investments the city and partners including WSDOT have been making since 2013. City receiving \$443k in FBRB funding for a new correction.
- 2 Downstream on Ravensdale Creek in Black Diamond. WSDOT correcting barriers on SR 169 while King County (with FBRB funding) will remove two downstream barriers. Two City of Black Diamond barriers remain further downstream.
- Another downstream barrier is on Padden Creek, again in Bellingham that JTC visited last year.





Dept of Ecology photo

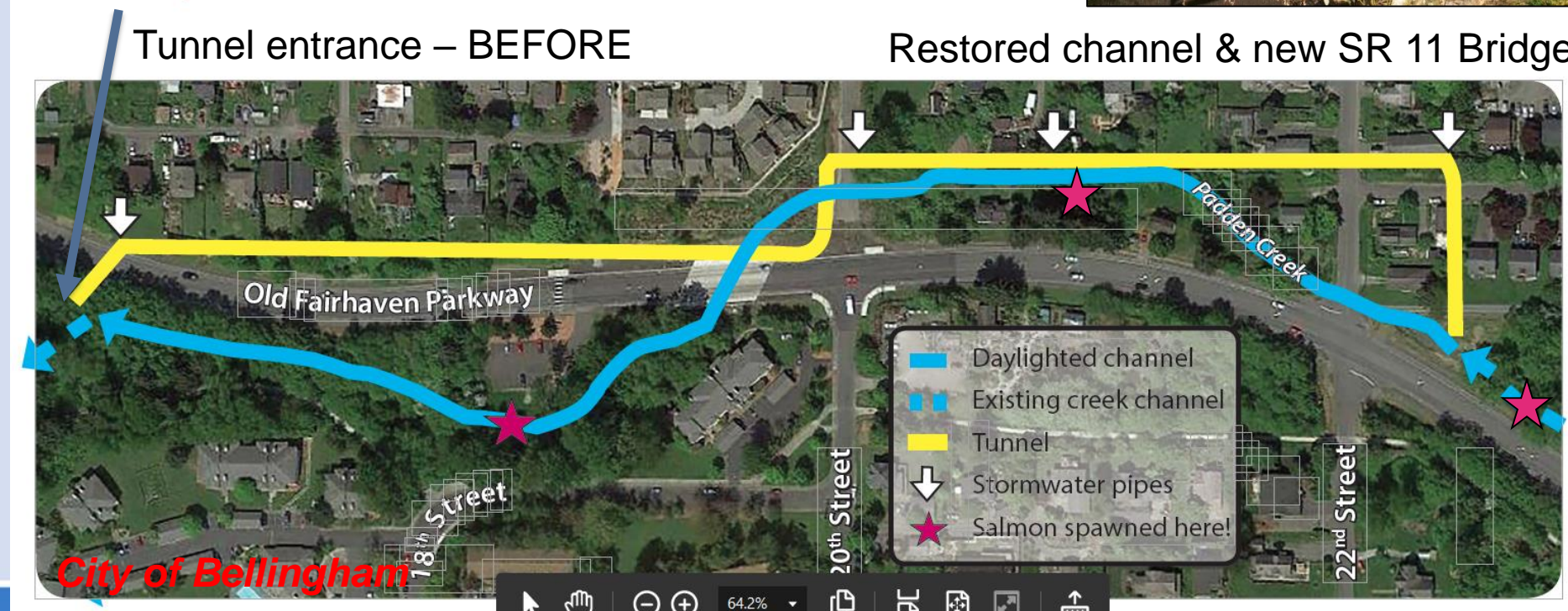
Padden Creek Timeline:

- 2013 – SR 11 Bridge
- 2015 – Padden Cr Restored
- 2016 – 97 Adult Salmon Counted Upstream
- 2018 – ~9,000 Juvenile Salmonids Counted



Tunnel entrance – BEFORE

Restored channel & new SR 11 Bridge



How can we best work together to achieve compliance with the injunction and the broader goal of fish recovery?

- Continue and enhance collaboration
- Ensure we have a clear strategic vision of what the state is aiming for beyond compliance with the injunction
- Develop a financing plan that will result in fully implementing injunction compliance and provides funding for strategic non-state barriers to meet targeted resource outcomes



*Juvenile salmon in Padden Creek